

STATE OF COLORADO



DEPARTMENT OF TRANSPORTATION

4201 East Arkansas Avenue
Denver, Colorado 80222
(303) 757-9293

Feb. 7, 2002

COLORADO CONSTRUCTION COST INDEX REPORT
Calendar year 2001
Fourth Quarter

Prepared by
Dino Sarganis
Engineering Estimates and Market Analysis (EEMA) Unit
Contracts and Market Analysis Branch

Prepared for
John Unbewust, Chief Engineer

STATE OF COLORADO



DEPARTMENT OF TRANSPORTATION

4201 East Arkansas Avenue
Denver, Colorado 80222
(303) 757-9293

SUMMARY

CONSTRUCTION COST INDEX FOR SELECTED HIGHWAY CONSTRUCTION ITEMS

4th QUARTER ENDING Dec. 31, 2001

Index for 2001 (entire year)	156.8
Index for 2000 (entire year)	170.7
Point change	-13.9
Percent change	-8.1%

Index for this quarter.....	155.3
Index for last quarter.....	163.4
Point change from last quarter.....	- 8.1
Percentage change from last quarter.....	- 5.0%
Index for same quarter of last year.....	168.9
Point change from same quarter last year.....	- 13.6
Percentage change from this quarter last year.....	- 8.1 %

Average number of bidders this quarter.....	5.50
Change in number of bidders from last quarter.....	+ 28.5%

NOTE: All information shown in this publication was assembled using 1987 as the base year.

Summary Report for all the projects awarded Between 10/1/2001 And 12/31/2001

<i>Project Amount</i>	<i>No. of Projects</i>	<i>No. of Bidders</i>	<i>Total Contract Amt.</i>	<i>Avg. # of Bids</i>
<i>\$0.00 to \$49,999.99</i>	3	11	\$93,802.60	3.7
<i>\$50,000.00 to \$99,999.99</i>	2	8	\$148,788.00	4.0
<i>\$100,000.00 to \$249,999.99</i>	1	4	\$209,841.80	4.0
<i>\$250,000.00 to \$499,999.99</i>	5	27	\$1,900,906.04	5.4
<i>\$500,000.00 to \$999,999.99</i>	2	11	\$1,733,001.00	5.5
<i>1,000,000.00 to \$2,499,999.99</i>	5	30	\$7,800,791.82	6.0
<i>2,500,000.00 to \$4,999,999.99</i>	1	11	\$4,848,631.79	11.0
<i>5,000,000.00 to \$9,999,999.99</i>	0			
<i>10,000,000.00 to \$19,999,999.99</i>	1	8	\$11,197,992.70	8.0
<i>20,000,000.00 or \$49,999,999.99</i>	0			
<i>20,000,000.00 or Greater</i>	0			
Total	20	110	\$27,933,755.75	

The number of bidders on all projects awards during this period **5.5 bidders per contract averaged**
 Average cost per project is **\$1,396,688**

Index Items as a percent of the total construction cost.

4th Quarter 2001 CCI Items:	\$ 9,323,595	
	-----	= 33.4 %
4 th Quarter 2001 All Construction Items:	\$ 27,933,755	

CCI ITEMS USED FROM 10/1/2001 TO 12/31/2001

ITEM CODE	# OF ITEM	QUANTITY	PRICE	UNIT PRICE	INDEX
203-00000 To 203-00060 203-00062 To 203-00210 203-00400 To 203-00500 203-01020 To 203-01030 209-00000 To 209-00050	7	English (CY) 134,643.00	\$813,810.00	\$6.04	
	2	Metric (CM) 683,176.00	\$2,403,616.00	\$3.52	
UNCLASSIFIED EXCAV (CIP)	9	1,028,237.21^{CY}	\$3,217,426.00	\$3.13	126.6
403-00720, 403-01000, 403-01010, 403-02000, 403-09121 To 403-09500 403-31300 To 403 36447 403-91401 To 403-95353 411-03100 To 411-03355 411-10010 To 411-90010 (Gal/Lit) Gallon & Liter are converted to Ton	12	English (TON) 12,105.94	\$538,509.00	\$44.48	
	6	Metric (MT) 63,066.01	\$2,264,375.50	\$35.90	
HOT BIT. PAVEMENT (H A)	18	81,636.21 T	\$2,802,884.50	\$34.33	147.6
412-00000 To 412-00050 412-00700 To 412-01352 412-03000 To 412-03000	3	English (SY) 5,368.07	\$257,300.00	\$47.93	
	0	Metric (SM) 0.00	\$0.00	\$0.00	
CONCRETE PAVEMENT (9")	3	5,368.07^{SY}	\$257,300.00	\$47.93	358.8
SURFACING TOTAL INDEX					169.8
509-00000 To 509-00000	0	English (LB) 0.00	\$0.00	\$0.00	
	0	Metric (KG) 0.00	\$0.00	\$0.00	
STRUCTURAL STEEL	0	0.00^{LB}	\$0.00	\$0.00	0.0
601-01022 To 601-01022 601-01030 To 601-01060 601-03030 To 601-05064	3	English (CY) 6,137.00	\$2,076,470.00	\$338.35	
	1	Metric (CM) 838.00	\$351,960.00	\$420.00	
STRUCTURAL CONCRETE	4	7,233.10^{CY}	\$2,428,430.00	\$335.74	154.5
602-00000 To 602-00000 602-00020 To 602-00020	6	English (LB) 1,186,668.00	\$527,541.67	\$0.44	
	1	Metric (KG) 81,830.00	\$90,013.00	\$1.10	
REINFORCING STEEL	7	1,367,103.15^{LB}	\$617,554.67	\$0.45	110.2

STRUCTURAL TOTAL INDEX 143.7

COMPOSITE INDEX = 155.3

Sum of the 6 categories cost = \$9,323,595.17

HBP Unit Price per CY = \$67.98

Concrete Pavement Unit Price per CY = \$191.73

Summary Report for all the projects awarded between 1/1/2001 And 12/31/2001

<i>Project Amount</i>	<i>No. of Projects</i>	<i>No. of Bidders</i>	<i>Total Contract Amt.</i>	<i>Avg. # of Bids</i>
<i>\$0.00 to \$49,999.99</i>	5	17	\$165,332.05	3.4
<i>\$50,000.00 to \$99,999.99</i>	5	14	\$352,138.00	2.8
<i>\$100,000.00 to \$249,999.99</i>	13	35	\$2,516,166.26	2.7
<i>\$250,000.00 to \$499,999.99</i>	28	103	\$9,949,937.61	3.7
<i>\$500,000.00 to \$999,999.99</i>	23	92	\$16,671,311.73	4.0
<i>1,000,000.00 to \$2,499,999.99</i>	35	168	\$52,971,663.86	4.8
<i>2,500,000.00 to \$4,999,999.99</i>	21	119	\$75,408,452.42	5.7
<i>5,000,000.00 to \$9,999,999.99</i>	10	75	\$72,022,192.18	7.5
<i>10,000,000.00 to \$19,999,999.99</i>	5	24	\$64,657,095.08	4.8
<i>20,000,000.00 to \$49,499,999.99</i>	1	7	\$26,646,684.30	7.0
<i>50,000,000.00 or Greater</i>	1	6	\$53,544,869.95	6.0

Total	147	660	\$374,905,843.44
--------------	------------	------------	-------------------------

The number of bidders on all projects awards during this period averaged **4.49** bidders per contract.
 Average cost per project is **\$2,550,380** (2001 CCI Items/All Construction Items = 42.2%).

CCI ITEMS USED FROM 1/1/2001 TO 12/31/2001

ITEM CODE	# OF ITEM	QUANTITY	PRICE	UNIT PRICE	INDEX
203-00000 To 203-00060 203-00062 To 203-00210 203-00400 To 203-00500 203-01020 To 203-01030 209-00000 To 209-00050	89	English (CY) 4,636,688.00	\$19,309,286.94	\$4.16	
	10	Metric (CM) 1,449,259.70	\$8,046,067.42	\$5.55	
UNCLASSIFIED EXCAV (CIP)	99	6,532,319.69^{CY}	\$27,355,354.36	\$4.19	169.5
403-00720, 403-01000, 403-01010, 403-02000, 403-09121 To 403-09500 403-31300 To 403 36447 403-91401 To 403-95353 411-03100 To 411-03355 411-10010 To 411-90010 (Gal/Lit) Gallon & Liter are converted to Ton	248	English (TON) 1,365,307.99	\$52,290,671.33	\$38.30	
	25	Metric (MT) 211,161.76	\$9,514,541.42	\$45.06	
HOT BIT. PAVEMENT (H A)	273	1,598,113.83^T	\$61,805,212.75	\$38.67	167.4
412-00000 To 412-00050 412-00700 To 412-01352 412-03000 To 412-03000	32	English (SY) 2,113,315.48	\$33,929,882.60	\$16.06	
	9	Metric (SM) 145,075.40	\$5,971,389.58	\$41.16	
CONCRETE PAVEMENT (9")	41	2,286,824.21^{SY}	\$39,901,272.18	\$17.45	130.6
SURFACING TOTAL INDEX					163.2
509-00000 To 509-00000	3	English (LB) 136,989.00	\$175,437.97	\$1.28	
	1	Metric (KG) 68.00	\$1,771.40	\$26.05	
STRUCTURAL STEEL	4	137,138.94^{LB}	\$177,209.37	\$1.29	151.5
601-01022 To 601-01022 601-01030 To 601-01060 601-03030 To 601-05064	53	English (CY) 44,058.40	\$12,823,547.10	\$291.06	
	10	Metric (CM) 20,914.60	\$8,831,005.47	\$422.24	
STRUCTURAL CONCRETE	63	71,414.70^{CY}	\$21,654,552.57	\$303.22	139.5
602-00000 To 602-00000 602-00020 To 602-00020	56	English (LB) 9,879,708.40	\$4,900,850.27	\$0.50	
	8	Metric (KG) 2,373,898.00	\$2,591,672.97	\$1.09	
REINFORCING STEEL	64	15,114,153.49^{LB}	\$7,492,523.24	\$0.50	120.9

STRUCTURAL TOTAL INDEX 138.4

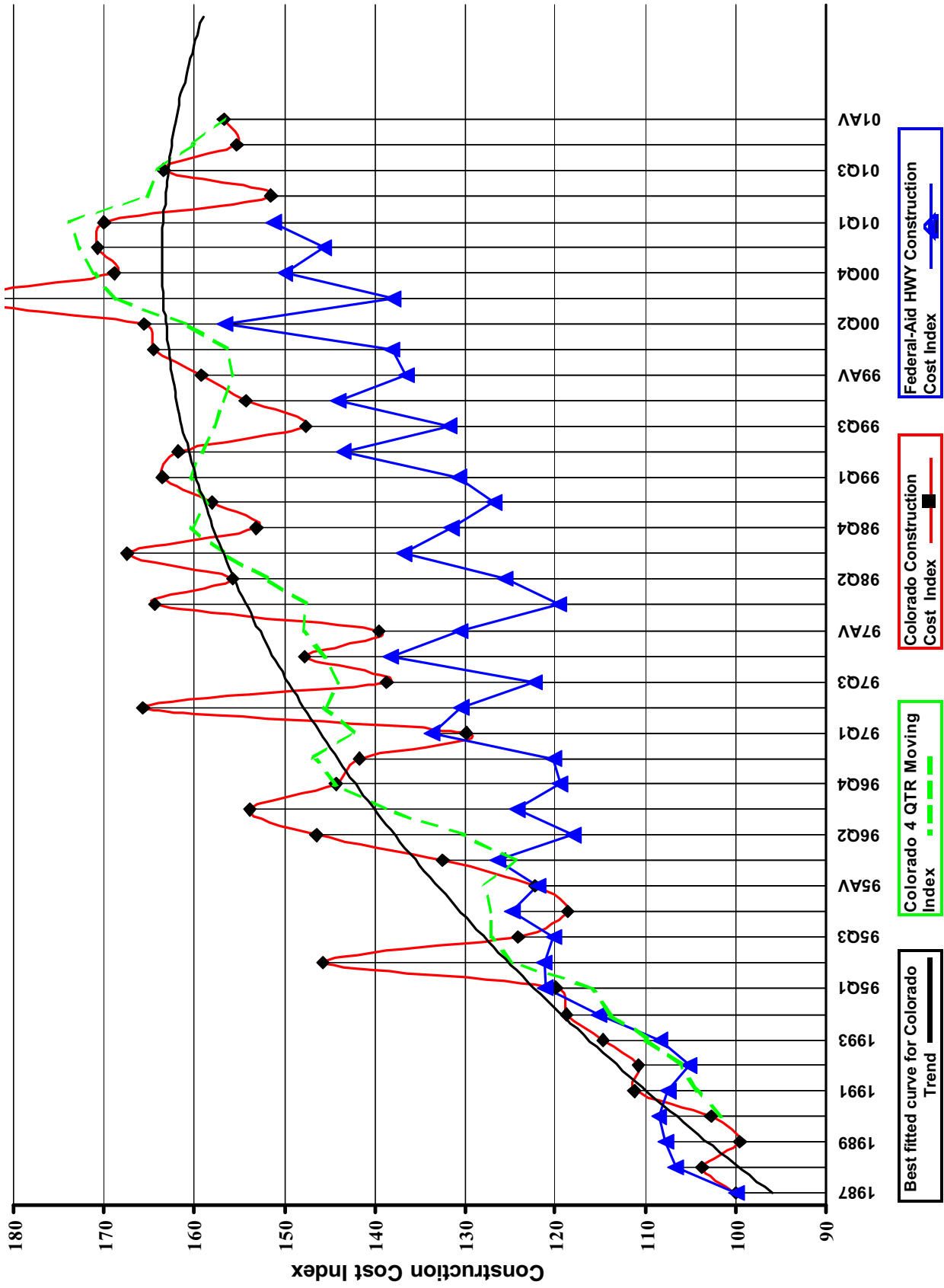
COMPOSITE INDEX = 156.8

Sum of the 6 categories cost = \$158,386,124.47

HBP Unit Price per CY = \$76.57

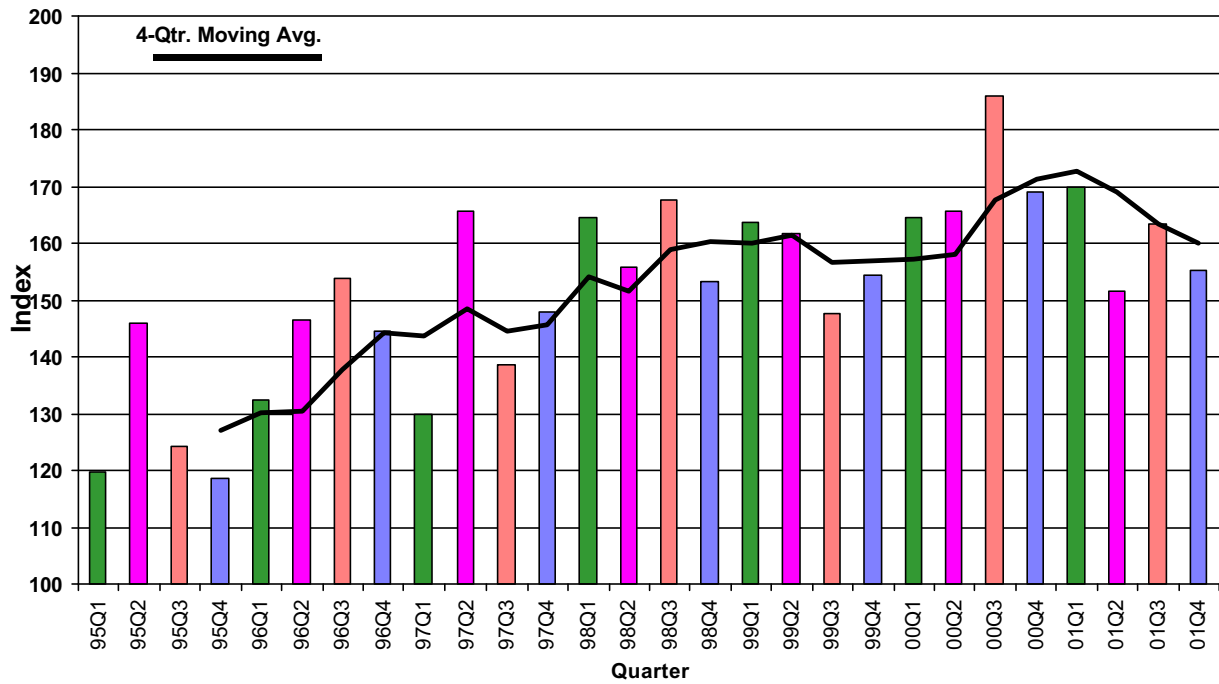
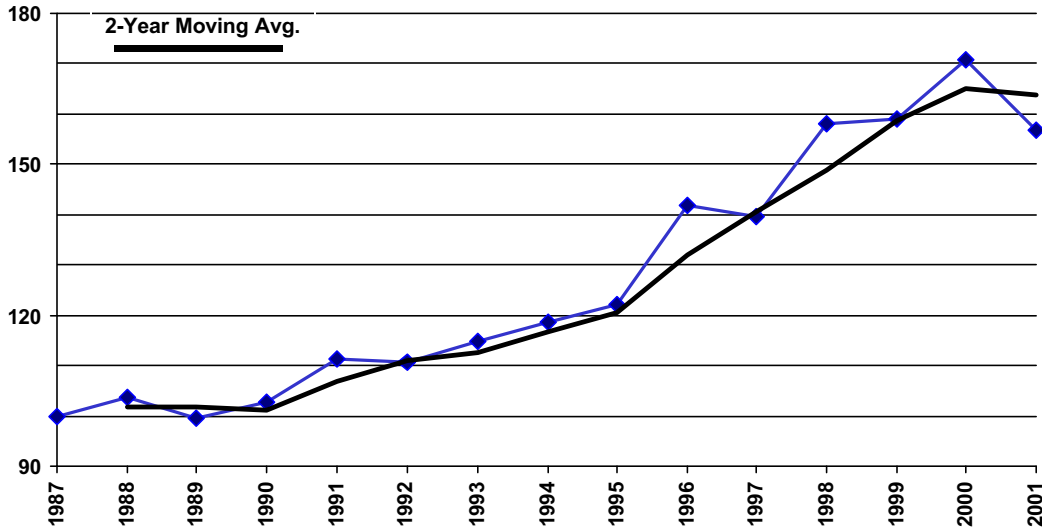
Concrete Pavement Unit Price per CY = \$69.79

Colorado Highway Construction Cost Index Graph and Tabulations (1987 Base Year)



YEAR	QTR.	Earthwork		Asph. Pavement		Concrete Pavement		Surfacing		Structural Concrete		Reinforcing Steel		Structural Steel		Composite Index	
		Bid Price	Index	Bid Price	Index	Bid Price	Index	Bid Price	Index	Bid Price	Index	Bid Price	Index	Bid Price	Index	Structural Index	Composite Index
1987	1987	\$2.47	100.0	\$23.17	100.0	\$13.36	100.0	\$217.32	100.0	\$0.41	100.0	\$0.85	100.0	\$0.85	100.0	100.0	100.0
1988	1988	\$2.92	118.1	\$23.88	103.0	\$13.84	103.6	\$195.02	89.7	\$0.45	110.7	\$0.89	104.1	\$0.89	104.1	96.7	103.7
1989	1989	\$2.57	103.9	\$23.67	102.2	\$11.65	87.2	\$199.41	91.8	\$0.40	97.8	\$0.88	103.5	\$0.88	103.5	95.3	99.6
1990	1990	\$2.78	112.5	\$23.98	103.5	\$15.09	113.0	\$190.86	87.8	\$0.37	90.8	\$0.99	116.0	\$0.99	116.0	94.1	102.7
1991	1991	\$3.31	133.8	\$26.25	113.3	\$16.03	120.0	\$195.43	89.9	\$0.38	93.1	\$0.89	104.4	\$0.89	104.4	93.5	111.2
1992	1992	\$2.77	112.3	\$26.20	113.1	\$23.82	178.3	\$216.87	99.8	\$0.36	87.9	\$0.71	82.8	\$0.71	82.8	94.0	110.7
1993	1993	\$3.25	131.4	\$27.74	119.7	\$16.75	125.4	\$212.43	97.7	\$0.37	90.1	\$0.79	93.0	\$0.79	93.0	95.3	114.7
1994	1994	\$3.56	144.2	\$28.40	122.6	\$18.78	140.6	\$219.94	101.2	\$0.37	89.7	\$0.67	78.8	\$0.67	78.8	94.4	118.8
1995	1995	\$3.41	138.1	\$30.25	130.5	\$17.82	133.4	\$211.29	97.2	\$0.39	94.0	\$0.90	105.5	\$0.90	105.5	98.3	122.3
1996	96Q1	\$4.26	172.4	\$30.62	132.2	\$17.31	129.6	\$237.58	109.3	\$0.39	94.0	(\$1.00)	-1.0	(\$1.00)	-1.0	105.6	132.5
1996	96Q2	\$5.11	206.9	\$31.35	135.3	\$34.29	256.7	\$237.47	109.3	\$0.43	103.7	\$1.02	119.1	\$1.02	119.1	110.2	146.5
1996	96Q3	\$4.48	181.2	\$36.31	156.7	\$16.92	126.6	\$312.26	143.7	\$0.44	106.7	\$1.32	154.8	\$1.32	154.8	138.8	153.9
1996	96Q4	\$4.05	164.1	\$35.94	155.1	(\$1.00)	-1.0	\$237.47	109.3	\$0.45	108.9	(\$1.00)	-1.0	(\$1.00)	-1.0	109.2	144.4
1996	96AV	\$4.46	180.5	\$32.73	141.3	\$19.22	143.9	\$265.98	122.4	\$0.43	105.1	\$1.09	128.5	\$1.09	128.5	120.2	141.7
1997	97Q1	\$3.60	145.8	\$31.47	135.8	\$20.81	156.0	\$229.63	105.7	\$0.42	103.5	\$0.97	113.7	\$0.97	113.7	106.9	129.9
1997	97Q2	\$7.09	286.8	\$34.08	147.1	\$24.42	182.8	\$269.94	124.2	\$0.46	111.7	\$1.12	131.6	\$1.12	131.6	123.3	165.7
1997	97Q3	\$4.08	165.1	\$31.55	136.2	\$24.15	180.8	\$257.62	118.5	\$0.49	119.3	\$1.06	124.7	\$1.06	124.7	119.9	138.6
1997	97Q4	\$3.65	147.9	\$37.66	162.5	\$18.84	141.1	\$268.22	123.4	\$0.45	110.8	(\$1.00)	-1.0	(\$1.00)	-1.0	120.4	147.8
1997	97AV	\$4.24	171.7	\$32.92	142.1	\$21.39	160.1	\$246.29	113.3	\$0.45	110.8	\$1.01	117.9	\$1.01	117.9	113.8	139.6
1998	98Q1	\$5.30	214.4	\$36.20	156.2	\$30.88	231.2	\$292.00	134.4	\$0.48	116.2	(\$1.00)	-1.0	(\$1.00)	-1.0	129.9	164.4
1998	98Q2	\$4.76	192.6	\$36.52	157.6	\$24.23	181.4	\$264.38	121.7	\$0.48	116.0	(\$1.00)	-1.0	(\$1.00)	-1.0	120.3	155.8
1998	98Q3	\$2.69	230.4	\$35.21	141.9	\$34.18	255.9	\$295.21	135.8	\$0.22	126.6	(\$1.00)	-1.0	(\$1.00)	-1.0	133.6	167.5
1998	98Q4	\$4.33	175.0	\$34.53	149.0	\$28.64	214.4	\$291.27	134.0	\$0.51	125.1	(\$1.00)	-1.0	(\$1.00)	-1.0	131.9	153.1
1998	98AV	\$4.89	198.0	\$35.72	154.2	\$26.54	198.7	\$283.01	130.2	\$0.50	122.0	(\$1.00)	-1.0	(\$1.00)	-1.0	128.2	158.1
1999	99Q1	\$5.91	239.4	\$36.57	157.8	\$18.57	139.0	\$335.29	154.3	\$0.59	144.9	\$0.54	63.8	\$0.54	63.8	134.1	163.5
1999	99Q2	\$5.34	216.0	\$35.09	151.4	\$21.90	163.9	\$326.59	150.3	\$0.61	149.8	\$1.15	135.3	\$1.15	135.3	147.1	161.8
1999	99Q3	\$4.42	178.8	\$36.62	158.1	\$24.59	184.1	\$298.62	137.4	\$0.52	125.5	(\$1.00)	-1.0	(\$1.00)	-1.0	107.2	147.7
1999	99Q4	\$4.11	166.5	\$33.96	146.6	\$33.04	247.3	\$305.27	140.5	\$0.50	121.1	\$1.46	171.1	\$1.46	171.1	143.0	154.3
1999	99AV	\$4.94	199.8	\$35.23	152.0	\$22.78	170.5	\$310.56	142.9	\$0.54	132.0	\$1.41	165.3	\$1.41	165.3	145.3	159.2
2000	00Q1	\$5.11	206.9	\$36.84	159.0	\$21.73	162.7	\$341.22	157.0	\$0.45	110.2	(\$1.00)	-1.0	(\$1.00)	-1.0	145.7	164.5
2000	00Q2	\$4.41	178.5	\$40.71	175.7	\$11.84	88.6	\$374.75	172.5	\$0.47	114.7	\$1.25	146.2	\$1.25	146.2	155.9	165.5
2000	00Q3	\$6.42	259.7	\$43.57	188.0	\$22.69	169.8	\$355.44	163.6	\$0.47	114.0	\$0.96	111.9	\$0.96	111.9	143.5	165.8
2000	00Q4	\$4.77	193.0	\$38.42	166.0	\$43.65	326.8	\$288.39	132.7	\$0.51	123.3	\$1.16	136.3	\$1.16	136.3	131.6	168.9
2000	00AV	\$5.25	212.6	\$40.02	173.0	\$20.56	153.9	\$346.82	159.6	\$0.47	115.2	\$1.18	138.8	\$1.18	138.8	146.8	170.7
2001	01Q1	\$4.14	167.6	\$40.40	175.5	\$37.17	278.2	\$311.48	143.3	\$0.51	123.8	\$0.00	0.0	\$0.00	0.0	138.6	170.0
2001	01Q2	\$4.78	193.6	\$35.62	154.0	\$13.66	102.3	\$282.89	130.2	\$0.50	122.6	\$0.00	0.0	\$0.00	0.0	128.3	151.5
2001	01Q3	\$4.29	173.6	\$41.20	177.9	\$20.63	154.5	\$297.55	136.9	\$0.50	120.8	\$1.29	151.5	\$1.29	151.5	136.8	163.4
2001	01Q4	\$3.13	126.6	\$34.33	147.6	\$47.93	358.8	\$335.74	154.5	\$0.45	110.2	\$0.00	0.0	\$0.00	0.0	143.7	155.3
2001	01AV	\$4.19	169.5	\$38.67	167.4	\$17.45	130.6	\$303.22	139.5	\$0.50	120.9	\$1.29	151.5	\$1.29	151.5	138.4	156.8

Colorado Construction Cost Index



Comments:

This Colorado Construction Cost Index is composed of six indicator items and based on bid prices relative to the unit prices of 1987 (unit index=100).

Earthwork (Excavation and Embankment):

The average price was \$3.13 a cubic yard which is down \$1.16 from the previous quarter. A large project on SH 50 in Region 3 had a bid price of \$2.68 for 887,054 cubic yards of unclassified excavation, lowered the average price for the quarter

Bituminous Pavement:

The average price was \$34.33 a ton which is down \$6.87 from the previous quarter. Increased competition for projects after the state construction project budget cuts, and oil price decreases tend to lower the average price.

Concrete Pavement:

The average price was \$47.93 a sq. yd. which is up \$27.30 from the previous quarter. Three projects with small quantities of concrete pavement bidding as high as \$80.00 a sq. yd. accounted for the increase in price this quarter..

Structural Steel:

No structural steel was bid during this quarter.

Structural Concrete:

The average price was \$335.74 a cu. yd. which is up \$38.19 from the previous quarter. The two largest projects of the quarter had structural concrete prices that averaged over \$400.00 cu. yd..

Reinforcing Steel:

The average price was \$0.45 a lb. The price is down \$0.05 from the previous quarter.

ADDITIONAL INFORMATION:

For the 4th quarter, the category indices showing an increase were Concrete Pavement and Structural Concrete. The Index level decreased for Earthwork, Hot Bituminous Pavement, and Reinforcing Steel.

20 projects were bid and awarded this quarter for a total of \$27,933,755.75. The competition for projects increased from 4.28 to 5.5 bidders for each project on average. By comparison,

20 projects were bid last quarter and 35 in the same quarter last year.

Nine maintenance contract projects were bid this quarter.

One metric project was bid this quarter. Metric quantities have been converted into English units for inclusion in this report.

No Design/Build or Lump Sum projects were bid this quarter.