

# STATE OF COLORADO

---



**DEPARTMENT OF TRANSPORTATION**

4201 East Arkansas Avenue  
Denver, Colorado 80222  
(303) 757-9293

Nov. 13, 2001

**COLORADO CONSTRUCTION COST INDEX REPORT**  
Calendar year 2001  
Third Quarter

Prepared by  
Dino Sarganis  
Engineering Estimates and Market Analysis Unit of  
Contracts and Market Analysis Branch

Prepared for  
John Unbewust, Chief Engineer

# STATE OF COLORADO



## DEPARTMENT OF TRANSPORTATION

4201 East Arkansas Avenue  
Denver, Colorado 80222  
(303) 757-9293

### SUMMARY

#### CONSTRUCTION COST INDEX FOR SELECTED HIGHWAY CONSTRUCTION ITEMS

3rd QUARTER ENDING Sept. 30, 2001

Index for this quarter.....	163.4
Index for last quarter.....	151.5
Point change from last quarter.....	+ 11.9
Percentage change from last quarter.....	+ 7.9%
Index for same quarter of last year.....	185.8
Point change from same quarter last year.....	- 22.4
Percentage change from this quarter last year.....	- 12.1 %

Average number of bidders this quarter.....	4.28
Change in number of bidders from last quarter.....	+ 8.1%

NOTE: All information shown in this publication was assembled using 1987 as the base year.

**Summary Report for all the projects awarded Between 7/1/2001 And 9/30/2001**

<i>Project Amount</i>	<i>No. of Projects</i>	<i>No. of Bidders</i>	<i>Total Contract Amt.</i>	<i>Avg. # of Bids</i>
<i>\$0.00 to \$49,999.99</i>	2	6	\$71,529.45	3.0
<i>\$50,000.00 to \$99,999.99</i>	2	3	\$104,750.00	1.5
<i>\$100,000.00 to \$249,999.99</i>	2	3	\$329,117.40	1.5
<i>\$250,000.00 to \$499,999.99</i>	5	15	\$1,722,243.60	3.0
<i>\$500,000.00 to \$999,999.99</i>	6	16	\$4,393,251.82	2.7
<i>1,000,000.00 to \$2,499,999.99</i>	8	43	\$12,941,717.97	5.4
<i>2,500,000.00 to \$4,999,999.99</i>	7	37	\$26,368,851.50	5.3
<i>5,000,000.00 to \$9,999,999.99</i>	4	29	\$31,300,795.62	7.3
<i>10,000,000.00 to \$19,999,999.99</i>	3	13	\$41,466,055.08	4.3
<i>20,000,000.00 or \$49,999,999.99</i>	---	---	---	---
<i>20,000,000.00 or Greater</i>	1	6	\$53,544,869.95	6.0
<b>Total</b>	<b>40</b>	<b>171</b>	<b>\$172,243,182.39</b>	

The number of bidders on all projects awards during this period **4.28** bidders per contract averaged Average cost per project is **\$4,306,079.56**

Index Items as a percent of the total construction cost.

3<sup>rd</sup> Quarter 2001 CCI Items: **\$ 66,134,741**  
 ----- = **38.4 %**

3<sup>rd</sup> Quarter 2001 All Construction Items: **\$ 172,243,182**

**CCI ITEMS USED FROM 7/1/2001 TO 9/30/2001**

ITEM CODE	# OF ITEM	QUANTITY	PRICE	UNIT PRICE	INDEX
203-00000 To 203-00060 203-00062 To 203-00210 203-00400 To 203-00500	26	English (CY) 2,952,713.00	\$11,443,395.76	\$3.88	
203-01020 To 203-01030 209-00000 To 209-00050	5	Metric (CM) 416,484.00	\$3,553,337.63	\$8.53	
<b>UNCLASSIFIED EXCAV (CIP)</b>	<b>31</b>	<b>3,497,474.07<sup>CY</sup></b>	<b>\$14,996,733.39</b>	<b>\$4.29</b>	<b>173.6</b>
403-00720, 403-01000, 403-01010, 403-02000, 403-09121 To 403-09500	70	English (TON) 335,176.42	\$13,346,915.79	\$39.82	
403-31300 To 403 36447 403-91401 To 403-95353 411-03100 To 411-03355 411-10010 To 411-90010 (Gal/Lit) Gallon & Liter are converted to Ton	12	Metric (MT) 112,943.96	\$5,591,073.01	\$49.50	
<b>HOT BIT. PAVEMENT (H A)</b>	<b>82</b>	<b>459,697.13 T</b>	<b>\$18,937,988.80</b>	<b>\$41.20</b>	<b>177.9</b>
412-00000 To 412-00050 412-00700 To 412-01352 412-03000 To 412-03000	14	English (SY) 817,212.03	\$16,066,974.68	\$19.66	
	4	Metric (SM) 44,285.69	\$1,887,818.47	\$42.63	
<b>CONCRETE PAVEMENT (9")</b>	<b>18</b>	<b>870,177.28<sup>SY</sup></b>	<b>\$17,954,793.15</b>	<b>\$20.63</b>	<b>154.5</b>
<b>SURFACING TOTAL INDEX</b>					<b>175.4</b>
509-00000 To 509-00000	3	English (LB) 136,989.00	\$175,437.97	\$1.28	
	1	Metric (KG) 68.00	\$1,771.40	\$26.05	
<b>STRUCTURAL STEEL</b>	<b>4</b>	<b>137,138.94<sup>LB</sup></b>	<b>\$177,209.37</b>	<b>\$1.29</b>	<b>151.5</b>
601-01022 To 601-01022 601-01030 To 601-01060 601-03030 To 601-05064	29	English (CY) 25,238.00	\$7,085,668.20	\$280.75	
	6	Metric (CM) 7,415.00	\$3,309,822.47	\$446.37	
<b>STRUCTURAL CONCRETE</b>	<b>35</b>	<b>34,936.82<sup>CY</sup></b>	<b>\$10,395,490.67</b>	<b>\$297.55</b>	<b>136.9</b>
602-00000 To 602-00000 602-00020 To 602-00020	26	English (LB) 6,039,440.00	\$3,033,735.70	\$0.50	
	4	Metric (KG) 624,172.00	\$638,789.87	\$1.02	
<b>REINFORCING STEEL</b>	<b>30</b>	<b>7,415,739.26<sup>LB</sup></b>	<b>\$3,672,525.57</b>	<b>\$0.50</b>	<b>120.8</b>

**STRUCTURAL TOTAL INDEX 136.8**

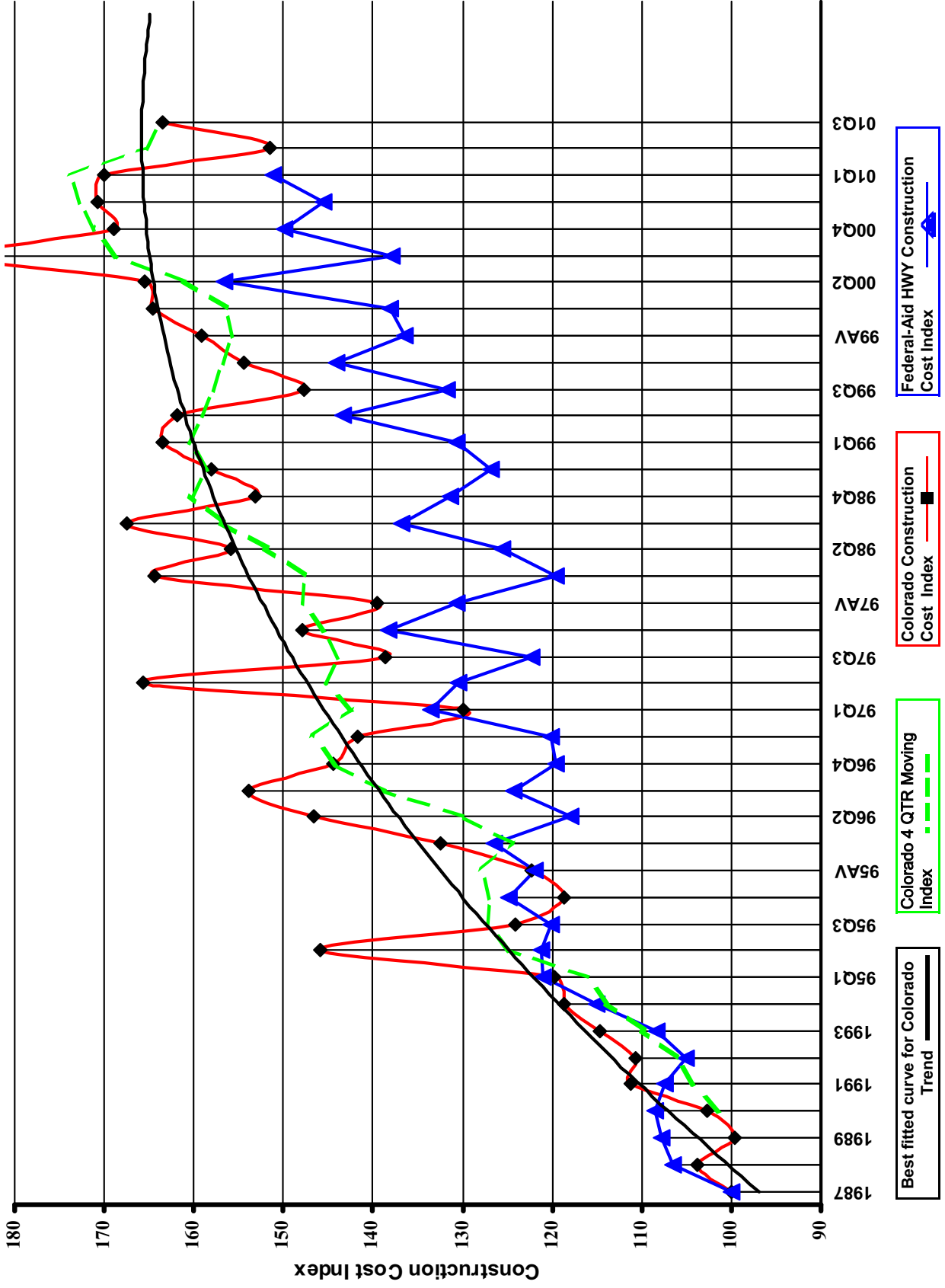
**COMPOSITE INDEX = 163.4**

**Sum of the 6 categories cost = \$66,134,740.95**

HBP Unit Price per CY = \$81.57

Concrete Pavement Unit Price per CY = \$82.53

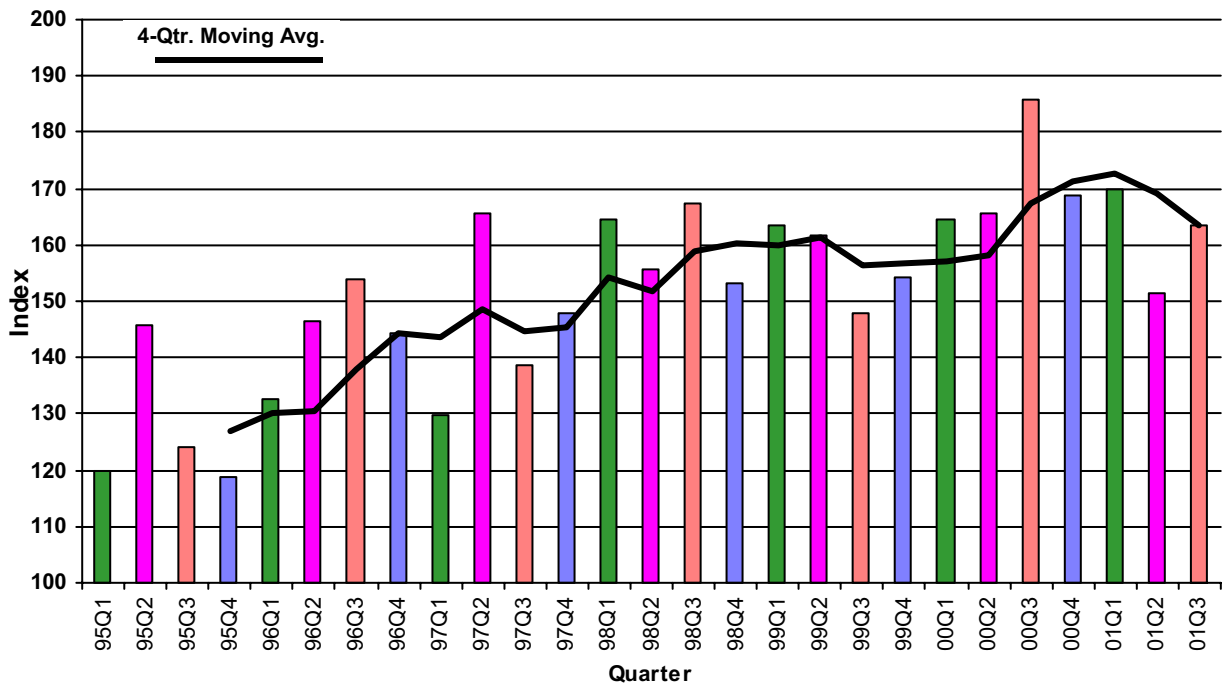
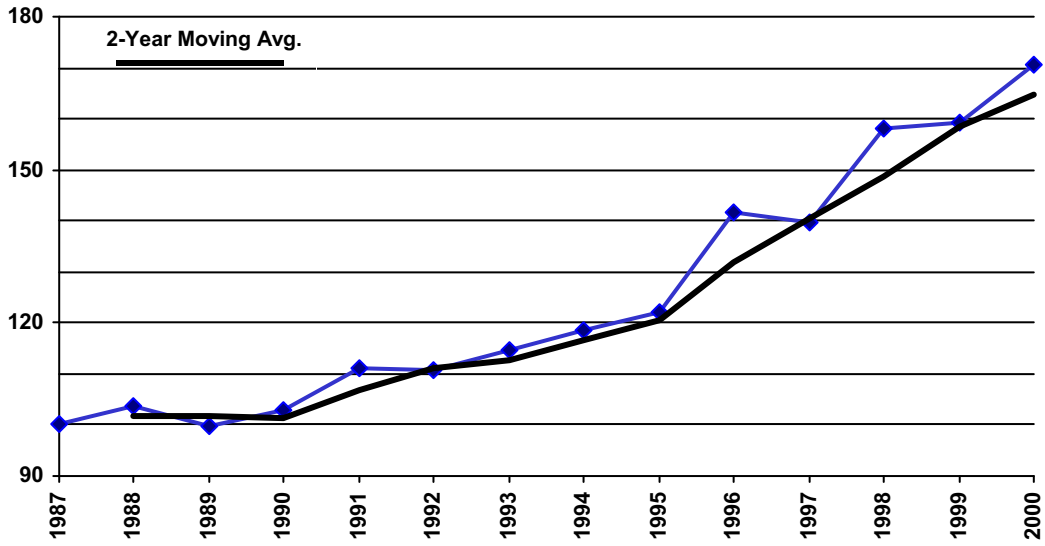
# Colorado Highway Construction Cost Index Graph and Tabulations (1987 Base Year)



**Colorado Highway Construction Cost Index Graph and Tabulations (1987 Base Year)**

YEAR	QTR.	Earthwork		Asph. Pavement		Concrete Pavement		Surfacing		Structural Concrete		Reinforcing Steel		Structural Steel		Composite Index
		Bid Price	Index	Bid Price	Index	Bid Price	Index	Bid Price	Index	Bid Price	Index	Bid Price	Index	Bid Price	Index	
1987	1987	\$2.47	100.0	\$23.17	100.0	\$13.36	100.0	100.0	100.0	\$217.32	100.0	\$0.41	100.0	\$0.85	100.0	100.0
1988	1988	\$2.92	118.1	\$23.88	103.0	\$13.84	103.6	103.6	103.1	\$195.02	89.7	\$0.45	110.7	\$0.89	104.1	96.7
1989	1989	\$2.57	103.9	\$23.67	102.2	\$11.65	87.2	87.2	100.6	\$199.41	91.8	\$0.40	97.8	\$0.88	103.5	95.3
1990	1990	\$2.78	112.5	\$23.98	103.5	\$15.09	113.0	113.0	104.5	\$190.86	87.8	\$0.37	90.8	\$0.99	116.0	94.1
1991	1991	\$3.31	133.8	\$26.25	113.3	\$16.03	120.0	120.0	114.0	\$195.43	89.9	\$0.38	93.1	\$0.89	104.4	93.5
1992	1992	\$2.77	112.3	\$26.20	113.1	\$23.82	178.3	178.3	119.8	\$216.87	99.8	\$0.36	87.9	\$0.71	82.8	94.0
1993	1993	\$3.25	131.4	\$27.74	119.7	\$16.75	125.4	125.4	121.3	\$212.43	97.7	\$0.37	90.1	\$0.79	93.0	95.3
1994	1994	\$3.56	144.2	\$28.40	122.6	\$18.78	140.6	140.6	124.4	\$219.94	101.2	\$0.37	89.7	\$0.67	78.8	94.4
1995	95Q1	\$2.85	115.5	\$30.98	133.7	\$20.33	152.2	152.2	135.6	\$217.43	100.1	\$0.39	94.6	\$0.67	78.8	94.7
1995	95Q2	\$6.18	250.1	\$30.43	131.3	\$27.06	202.5	202.5	138.7	\$227.59	104.7	\$0.40	97.0	\$0.73	85.6	99.3
1995	95Q3	\$3.33	134.7	\$30.51	131.7	\$16.02	119.9	119.9	130.5	\$229.50	105.6	\$0.38	93.8	(\$1.00)	-1.0	102.7
1995	95Q4	\$3.33	134.9	\$28.43	122.7	\$21.81	163.2	163.2	126.9	\$192.09	88.4	\$0.40	97.8	\$0.95	111.7	94.9
1995	95AV	\$3.41	138.1	\$30.25	130.5	\$17.82	133.4	133.4	130.8	\$211.29	97.2	\$0.39	94.0	\$0.90	105.5	98.3
1996	96Q1	\$4.26	172.4	\$30.62	132.2	\$17.31	129.6	129.6	131.9	\$237.58	109.3	\$0.39	94.0	(\$1.00)	-1.0	105.6
1996	96Q2	\$5.11	206.9	\$31.35	135.3	\$34.29	256.7	256.7	147.8	\$237.47	109.3	\$0.43	103.7	\$1.02	119.1	110.2
1996	96Q3	\$4.48	181.2	\$36.31	156.7	\$16.92	126.6	126.6	153.6	\$312.26	143.7	\$0.44	106.7	\$1.32	154.8	138.8
1996	96Q4	\$4.05	164.1	\$35.94	155.1	(\$1.00)	-1.0	-1.0	155.1	\$237.47	109.3	\$0.45	108.9	(\$1.00)	-1.0	109.2
1996	96AV	\$4.46	180.5	\$32.73	141.3	\$19.22	143.9	143.9	141.5	\$265.98	122.4	\$0.43	105.1	\$1.09	128.5	120.2
1997	97Q1	\$3.60	145.8	\$31.47	135.8	\$20.81	156.0	156.0	137.9	\$229.63	105.7	\$0.42	103.5	\$0.97	113.7	106.9
1997	97Q2	\$7.09	286.8	\$34.08	147.1	\$24.42	182.8	182.8	150.7	\$269.94	124.2	\$0.46	111.7	\$1.12	131.6	123.3
1997	97Q3	\$4.08	165.1	\$31.55	136.2	\$24.15	180.8	180.8	140.8	\$257.62	118.5	\$0.49	119.3	\$1.06	124.7	119.9
1997	97Q4	\$3.65	147.9	\$37.66	162.5	\$18.84	141.1	141.1	160.3	\$268.22	123.4	\$0.45	110.8	(\$1.00)	-1.0	120.4
1997	97AV	\$4.24	171.7	\$32.92	142.1	\$21.39	160.1	160.1	143.9	\$246.29	113.3	\$0.45	110.8	\$1.01	117.9	113.8
1998	98Q1	\$5.30	214.4	\$36.20	156.2	\$30.88	231.2	231.2	164.0	\$292.00	134.4	\$0.48	116.2	(\$1.00)	-1.0	129.9
1998	98Q2	\$4.76	192.6	\$36.52	157.6	\$24.23	181.4	181.4	160.1	\$264.38	121.7	\$0.48	116.0	(\$1.00)	-1.0	120.3
1998	98Q3	\$2.69	230.4	\$35.21	141.9	\$34.18	255.9	255.9	162.6	\$295.21	135.8	\$0.22	126.6	(\$1.00)	-1.0	133.6
1998	98Q4	\$4.33	175.0	\$34.53	149.0	\$28.64	214.4	214.4	155.8	\$291.27	134.0	\$0.51	125.1	(\$1.00)	-1.0	131.9
1998	98AV	\$4.89	198.0	\$35.72	154.2	\$26.54	198.7	198.7	158.7	\$283.01	130.2	\$0.50	122.0	(\$1.00)	-1.0	128.2
1999	99Q1	\$5.91	239.4	\$36.57	157.8	\$18.57	139.0	139.0	155.9	\$335.29	154.3	\$0.59	144.9	\$0.54	63.8	134.1
1999	99Q2	\$5.34	216.0	\$35.09	151.4	\$21.90	163.9	163.9	152.7	\$326.59	150.3	\$0.61	149.8	\$1.15	135.3	147.1
1999	99Q3	\$4.42	178.8	\$36.62	158.1	\$24.59	184.1	184.1	160.7	\$298.62	137.4	\$0.52	125.5	(\$1.00)	-1.0	107.2
1999	99Q4	\$4.11	166.5	\$33.96	146.6	\$33.04	247.3	247.3	156.9	\$305.27	140.5	\$0.50	121.1	\$1.46	171.1	143.0
1999	99AV	\$4.94	199.8	\$35.23	152.0	\$22.78	170.5	170.5	153.9	\$310.56	142.9	\$0.54	132.0	\$1.41	165.3	145.3
2000	00Q1	\$5.11	206.9	\$36.84	159.0	\$21.73	162.7	162.7	159.4	\$341.22	157.0	\$0.45	110.2	(\$1.00)	-1.0	145.7
2000	00Q2	\$4.41	178.5	\$40.71	175.7	\$11.84	88.6	88.6	166.8	\$374.75	172.5	\$0.47	114.7	\$1.25	146.2	155.9
2000	00Q3	\$6.42	259.7	\$43.57	188.0	\$22.69	169.8	169.8	186.2	\$355.44	163.6	\$0.47	114.0	\$0.96	111.9	143.5
2000	00Q4	\$4.77	193.0	\$38.42	166.0	\$43.65	326.8	326.8	182.4	\$288.39	132.7	\$0.51	123.3	\$1.16	136.3	131.6
2000	00AV	\$5.25	212.6	\$40.02	173.0	\$20.56	153.9	153.9	170.8	\$346.82	159.6	\$0.47	115.2	\$1.18	138.8	146.8
2001	01Q1	\$4.14	167.6	\$40.40	175.5	\$37.17	278.2	278.2	185.0	\$311.48	143.3	\$0.51	123.8	\$0.00	0.0	138.6
2001	01Q2	\$4.78	193.6	\$35.62	154.0	\$13.66	102.3	102.3	148.5	\$282.89	130.2	\$0.50	122.6	\$0.00	0.0	128.3
2001	01Q3	\$4.29	173.6	\$41.20	177.9	\$20.63	154.5	154.5	175.4	\$297.55	136.9	\$0.50	120.8	\$1.29	151.5	136.8

## Colorado Construction Cost Index



### Comments:

This Colorado Construction Cost Index is composed of six indicator items and based on bid prices relative to the unit prices of 1987 (unit index=100).

### Earthwork (Excavation and Embankment):

The average price was \$4.29 a cu. yd which is down \$0.49 from the previous quarter. A large project on I25 from SH 7 to Weld County road had a bid price of \$2 for 1,315,000 cu. yd. of unclassified excavation which lowered the average price for the quarter

### Bituminous Pavement:

The average price was \$41.20 a ton which is up \$5.58 from the previous quarter. Eighteen project had prices for HBP exceeding \$50 per ton due to relatively small quantities, which tend to drive up the average price.

### Concrete Pavement:

The average price was \$20.63 a sq. yd. which is up \$6.97 from the previous quarter. The previous quarter price for Concrete was unusually low.

### Structural Steel:

The average price was \$1.29 a pound. No structural steel was bid during the previous quarter.

### Structural Concrete:

The average price was \$297.55 a cu. yd. which is up \$14.66 from the previous quarter. Fifteen projects had prices for structural concrete of \$400 or higher a cu. yd.

### Reinforcing Steel:

The average price was \$0.50 a lb. The price was unchanged from the previous quarter.

### ADDITIONAL INFORMATION:

For the 3<sup>rd</sup> quarter, the category indices showing an increase were Hot Bituminous Pavement, Concrete Pavement, and Structural Concrete, and Reinforcing Steel. The Index level decreased for Earthwork..

40 projects were bid and awarded this quarter for a total of \$172,243,182. The competition for projects increased from 3.96 to 4.28 bidders for each project on average. By comparison,

45 projects were bid last quarter and 32 in the same quarter last year.

Seven maintenance contract projects were bid this quarter.

Three metric projects were bid this quarter. Metric quantities have been converted into English units for inclusion in this report.

No Design/Build or Lump Sum projects were bid this quarter.