



COLORADO

Department of Transportation

Statewide Bridge Enterprise

Colorado Bridge Enterprise

Quarterly Report No. 16 (Q3 FY2015)

July 9, 2015

Introduction

This report is the sixteenth Quarterly Report (Report) published in support of the Colorado Bridge Enterprise (CBE or “Program”). This Report outlines progress and accomplishments associated with the Program for work completed during January, February and March of 2015; which coincides with the third quarter of CDOT’s 2015 fiscal year (or Q3 FY2015). Detailed information regarding the FASTER (Funding Advancement for Surface Transportation and Economic Recovery) legislation, program development activities, bond program, previous significant milestones and achievements can be found in the Program Annual Reports and previous Quarterly Reports viewable on CDOT website at www.coloradodot.info/programs/BridgeEnterprise.

During Q3 FY2015, the Program primarily focused on the close out of bridge projects partially or fully funded by the \$300M bond program. The following is an itemization of significant achievements, some of which are discussed in further detail later in the report:

- Drafted the fifteenth Bridge Enterprise Quarterly Report for Q2 FY2015 (October, November and December of 2014).
- Posted the Bridge Enterprise 2014 Annual Report to CDOT’s website in accordance with FASTER legislation.
- Development and presentation of the 2014 Year-in-Review to the Board of Directors.
- Updated the Prioritization Plan based on changes made to the 2014 “Poor List” in December 2014. Three new structures became Bridge Enterprise eligible for the period.
- Completed monthly updates to the overall Program Schedule for work completed in January, February and March of 2015. Also presented updates at the ACEC quarterly meeting.
- Program Financial Update Report (previously called the Bond Allocation Program Report) was presented through Q2 FY2015 (December 2014). This report now encompasses the entire program.
- Approval and adoption of the FY2015 Bridge Enterprise sixth and seventh Budget Supplements, as well as Supplements for design/shelve projects.
- Updated program status for various program metrics including Major Achievements, Total Program Financial Performance, Status of FASTER Eligible Bridges, Status of \$300M Bond Bridges, Status of 30 Most Deficient Bridges, and Un-Programmed Priority Bridge Enterprise Bridges.
- Executed Q3 FY2015 Maintenance Invoice.
- Presented Bridge Enterprise Board a recommended list of eight structures to program (fund) through the pre-construction phase only. Budget supplements for two of these projects were submitted and approved in March.
- Approval and adoption of HPTe Project Proposal Guidelines for procurement of Public-Private-Partnership projects, which are associated with the procurement of the I-70 Viaduct project.
- Presented draft Bridge Enterprise FY2016 draft budget.

Program Highlights

There are ninety-three bridges that are partially or fully funded to be completed as part of the \$300M bond program. Eighty-five percent of the bond funded bridge projects can be classified as complete, in construction or are waiting to go to construction (79 in total); as compared to the number of bridges in the pre-construction, design or project startup phase (14 in total), at 15%.

Projects in the preconstruction phase are primarily focused on the completion of the PS&E's (Plans, Specifications and Estimates). In conjunction with this, CDOT specialty groups are diligently working on completing the requisite approvals and permits associated with environmental, railroad, and utility clearances or relocations; securing the necessary Right-of-Way (ROW); and finalizing intergovernmental agreements (as required), etc. Per the current program schedule, construction work is projected to continue to taper-off during calendar year 2015 into calendar year 2016.

As of the end of March 2015, there were a total of one-hundred-eighty-three (183) bridges considered eligible to receive FASTER funding. The progress status associated with these 183 structures is itemized in Table 1 below.

Table 1. Project Status as of Q3 FY2015

| Project Phase | Number of Bridges |
|----------------------------|-------------------|
| Future Projects | 24 |
| In Design/Design Completed | 16 |
| In Construction | 21 |
| Projects Completed (1) | 106 |
| No Action Proposed | 16 |
| Total (2) (3) | 183 |

- (1) Reference Appendix A for List of Completed Bridges
- (2) Reference Appendix B for complete List of FASTER eligible bridges
- (3) Reference Appendix C for Colorado State map of FASTER eligible bridges

Other relevant bridge and financial statistics are as follows:

- Approximately 69% of FASTER eligible bridges (21+106) are now in construction or completed.
- Approximately 9% of FASTER eligible bridges (16) are currently in design or design is completed.
- 22% of FASTER eligible bridges remain to be programmed (24 plus 16).
- Additionally, \$295.0M and \$10.9M respectively of bond program funds have been expended or encumbered to date (reference Table 7).

The program schedule progress and performance information presented in Table 2 shows the value of the work complete through Q3 FY2015 as compared to what had been planned to be completed per the baseline schedule. The earned value of work complete to date was \$545.8M as compared to the planned value of the work scheduled to be completed at \$591.7M; which indicates that the program was approximately 8% behind the plan.

Note - Earned Value at the lowest level is attained by multiplying the percent complete of a project activity by its respective budget. Earned value is rolled-up from the project level to the region level, and then again rolled-up from the region level to the program level.

Table 2. Q3 FY2015 Earned Value by CDOT Region and Program (\$K)

| CDOT Region | Planned Value of Work through March 31, 2014 | Earned Value of Work through March 31, 2014 st | Schedule Variance |
|--------------|--|---|-------------------|
| 1 | 400,944 | 372,348 | (28,596) |
| 2 | 69,595 | 67,125 | (2,470) |
| 3 | 69,057 | 55,563 | (13,494) |
| 4 | 40,338 | 38,944 | (1,394) |
| 5 | 11,765 | 11,775 | 10 |
| Total | 591,699 | 545,755 | (45,944) |

The Program utilizes cost and schedule Key Performance Indicators (or KPIs) to track, monitor and report on program performance. As part of the monthly schedule update, a Schedule Performance Index (SPI) is calculated for each project included within the bond program. The SPI is also calculated and reported at the regional and program levels. The SPI is based upon earned value which compares actual progress to planned performance based upon work complete to date. The program SPI for work complete through March 2015 was 0.92; the same value as the previous quarterly report (December 2014, SPI at 0.92). The program has established an SPI goal during execution of greater than or equal to 0.90.

Program Activities and Accomplishments in Q3 FY2015

The Program’s main activities and significant accomplishments are briefly described below.

FASTER eligible bridges

There were no newly eligible structures added during the period.

Pre-Construction Phase

There was one project which began the pre-construction phase during this period as itemized in Table 3 below.

Table 3. Projects / Bridges which began the pre-construction phase

| Region | Original Bridge Number | County | Facility Carried over Featured Intersection |
|--------|------------------------|----------|---|
| 5 | K-01-C | MONTROSE | SH 90 ML over DOLORES RIVER |

Projects that went to AD (Advertisement for Construction)

There were three projects that went to AD during the period as itemized in Table 4 below.

Table 4. Projects / Bridges that went to AD

| Region | Original Bridge Number | County | Facility Carried over Featured Intersection |
|--------|------------------------|-------------|--|
| 1 | F-14-Y | CLEAR CREEK | I 70(BUSINESS RT) over I 70 ML |
| 2 | P-23-A_MINOR | LAS ANIMAS | US 160 ML over SMITH CANYON TRIBUTARY; Near KIM, CO |
| 3 | F-07-A | GARFIELD | SH 82 ML over I70 ML, COLORADO RVR, RR; GLENWOOD SPRINGS |

Projects that went to Construction

There were five projects that went to construction during the period as itemized in Table 5 below.

Table 5. Projects / Bridges that went to Construction

| Region | Original Bridge Number | County | Facility Carried over Featured Intersection |
|--------|------------------------|-----------|---|
| 1 | E-16-AA | ADAMS | US 287 ML over BNSF RR SPUR; at 69TH AVE |
| 1 | F-16-ER | JEFFERSON | US 6 ML over GARRISON STREET (LAKEWOOD) |
| 2 | L-28-C | PROWERS | US 50 ML over BNSF RR; E of GRANADA |
| 2 | L-27-S | PROWERS | US 50 ML over DRAW; E of LAMAR |
| 2 | K-14-J | FREMONT | US 50 ML over DRAW, btwn TEXAS CREEK & COTOPAXI |

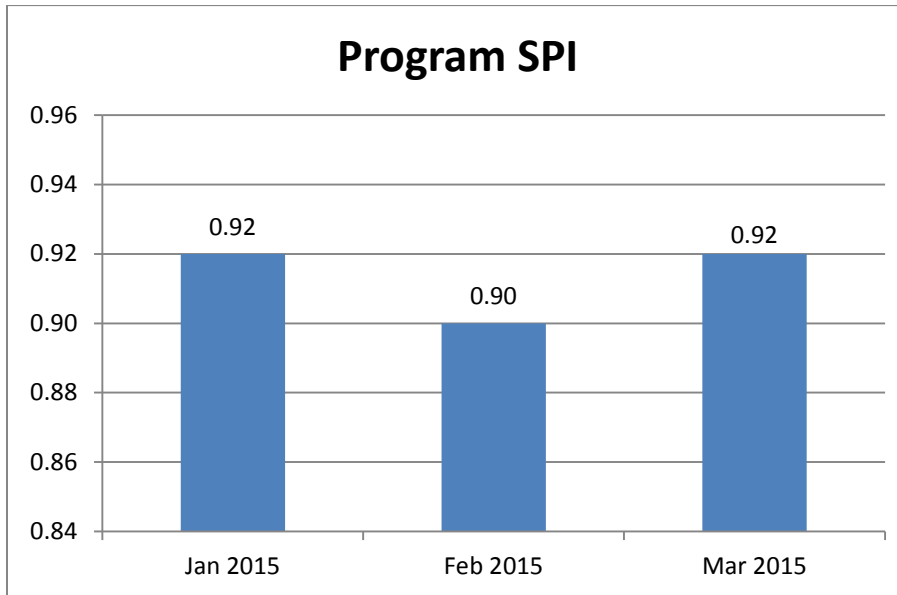
Completed Projects

There were no projects completed during the period.

Program Schedule Update

The program schedule was updated three times during the period for work completed in January, February and March of 2015. This includes publishing the monthly updated program bar-chart schedule, cost and schedule database, and list of projects with an SPI < 0.90. This information was consolidated and distributed to the Regional Transportation Director’s (or RTD’s) and their respective program engineers. The SPI’s reported for each month during the quarter are graphically depicted in Figure 1 below.

Figure 1. Program SPI Reported by Month, for the Period



Schedule Change Control Board

The Schedule Change Control Board (SCCB) conducts monthly meetings that are attended by senior CDOT HQ staff, regional transportation directors and program engineers. The purpose of the SCCB meetings was two-fold: (1) document and review projects with an SPI < 0.90, and (2) allow the RTD's (or their designated delegate) an opportunity to petition the SCCB to make adjustments to a project's baseline schedule when the schedule logic does not reflect current project delivery and is artificially impacting the SPI calculation. Formal meeting minutes were published with a list of attendees and an itemized list of SCCB approved changes; subject changes were incorporated into the program schedule in the subsequent schedule update.

Note - the SCCB policy is not intended to provide relief to poorly performing projects. Guidance Document #7 Rev. #1 allows a project schedule to be re-baselined when a project transitions from design to construction phases.

Major Project/Program Strategic Planning and Coordination

The Bridge Enterprise staff continues to work intimately with various CDOT project teams on coordination, funding eligibility, and strategic planning issues associated with the following large projects:

- Region 1:
 - Colfax over Tollgate Creek; Arapahoe Road over Cherry Creek; I-70 business route over I-70 ML east of Idaho Springs; I-70 ML WB over US 6: Bridge Enterprise staff continues to attend site and progress meetings and actively provide ongoing support for these projects.
 - I-70 over Havana Street: Attended EMT meetings and provided ongoing attendance and project support.

- US 287/69th bridge: Bridge Enterprise staff attended coordination meeting to discuss FHWA requirements.
- US6 over Garrison Street: Attended site, construction and progress meetings and performed schedule and eligibility reviews with project staff.
- US 6th Avenue bridge/road improvement: Bridge Enterprise has three replacement bridges in the project; 6th Ave over BNSF, So. Platte River and Bryant Street. Program staff attended meetings for project team coordination.
- I-70 Viaduct: Attended several meetings and began the Preliminary Eligibility Review process.
- Region 2:
 - Ilex Design/Build Bridge Replacement/Rehabilitation project: Continuing attendance at meetings, including the Design/Build monthly update meeting with region staff and FHWA.
- Region 3:
 - SH 82 Grand Ave Bridge in Glenwood Springs:
 - Continue work with program engineer to track and forecast the estimated total project costs.
 - Attended meetings and/or conference calls regarding the status of right-of-way and utility issues, project leadership team coordination issues, and project public involvement issues.
 - Bridge Enterprise staff provided guidance to the project management and design team on the avoidance of undesirable contractual risk elements.
 - Bridge Enterprise financial staff provided guidance to the region regarding the financial constraints to which the project must adhere.
 - Provided guidance and support to project management team and region on the procurement of additional outside sources of funding.
 - Provided guidance and support to the project teams in regard to the compiling and requirements of publishing a financial plan as required by the FHWA.
 - Bridge Enterprise staff began FOR plan review and development of the Final Eligibility Review.
 - I-70 over US6, UPRR & Eagle River: Bridge Enterprise team continues to actively provide ongoing support to this project.
- Region 5:
 - SH90 over Dolores River: Participated in project delivery workshop and attended various meetings with region staff to develop project delivery plan.

I-70 Viaduct Project

A workshop was held in January 2015 to discuss funding sources and availability for the removal of the existing viaduct, construction of a Partial Covered Lowered (PCL) alternative and the addition of toll lanes from I-25 to I-225. In March 2015, the Bridge Enterprise Board adopted a Resolution stating “DBFOM” (Design Build Finance Operate Maintain) as the delivery method for this project. The Board also directed staff to proceed with procurement of Requests for Qualifications. Bridge Enterprise staff is

proceeding with the proposed contribution of \$850M for the I-70 Viaduct replacement. Once the funding scenario for the I-70 Viaduct replacement project is finalized and determined, Bridge Enterprise will be able to update long-term planning forecast documents. Work performed during the quarter included support to OFMB and OMPD staff in development of the presentation to Transportation Commission and Bridge Enterprise Board outlining desired scope and staff recommendations for the delivery of the project. Bridge Enterprise staff attended weekly Project Management team meetings, public meetings, and an EOC debrief meeting with CDOT's Chief Engineer.

FASTER Process Audit

The Office of the State Auditor (OSA) initiated a Bridge Enterprise Process Audit in summer of 2014, which examines standard procedures and processes within the FASTER legislation. The audit is scheduled to conclude June 30, 2015. CDOT staff and the Bridge Enterprise team continue to conduct research and reporting tasks as requested by the OSA.

Bond Spending

Including net bond proceeds and interest earnings on the bond proceeds, the actual spend down was at 95.9% on March 31, 2015. The Bridge Enterprise team is continuing its efforts to assure 100% spend down of the bonds by: Transferring Bond budget from substantially complete and slow spending projects to projects that could spend the budget faster; and by the Bridge Enterprise Accountant billing the Trustee weekly rather than monthly to speed up the reimbursement process.

Monthly / Quarterly Program Reports

Q2 FY2015 Quarterly Report: Bridge Enterprise completed the quarterly report highlighting program progress for work complete in October, November and December of 2014, which coincides with CDOT's second quarter of fiscal year 2015 (Q2 FY2015).

Q2 FY2015 Quarterly Bond Program Update: The \$300M bond program allocation plan was updated for work complete through December 2014 (Q2 FY2015). The Q2 FY2015 bond program update was presented at the January Bridge Enterprise Board meeting.

Monthly Bond Program Update: Program staff completes a monthly bond update rather than quarterly updates through year end. An update was performed for work complete through March 31, 2015.

FASTER Job Creation

FHWA tracks the economic benefits of highway capital investments (which include bridge replacement projects), and from a job creation perspective employment impacts fall into three categories as listed below:

- Direct jobs are occupations that work directly on the project such as project planners, designers, engineers and construction workers.
- Indirect jobs means positions at suppliers of materials for the project, such as steel, concrete, wood, etc.

- Induced jobs are jobs created by the spending of monies provided as project salaries [or employee payroll] for items such as mortgage payments, groceries, gas, entertainment, etc.

The most recent official estimate of the impacts of infrastructure investment on employment was generated by Council of Economic Advisers (CEA) within the Executive Office of the President. In a 2014 DOT statement, the CEA estimated that every \$1 billion in Federal highway and transit investment funded by the American Jobs Act would support 13,000 jobs for one year. For the program, this correlates to approximately 4,619 full-time positions, primarily construction craft labor. In addition, preconstruction program expenditures (i.e., engineering and project designs) created another approximately 1,555 full-time positions; primarily engineers. Combined, there were approximately 6,174 direct jobs created by FASTER program spending to date. Included in the above number are approximately 38 CDOT FTE’s (full-time equivalents) for this quarter; staff responsible for the day-to-day delivery of the program based upon CDOT payroll records.

Resolutions Approved by the Statewide Bridge Enterprise Board

The following is a brief overview of resolutions passed by the Statewide Bridge Enterprise Board of Directors or significant topics discussed during Q3 FY2015 as itemized in Table 6 below.

Table 6. Board Resolution / Significant Topics:

| |
|--|
| January Board of Directors Meeting |
| <ul style="list-style-type: none"> ▪ Adoption of 6th Budget Supplement for FY2015 ▪ On-System Poor List/Prioritization Scoring Update ▪ Recommendations for Programming Bridge Design for New Projects ▪ Q1 FY2015 Bridge Enterprise Program Financial Update ▪ Monthly Progress Report ▪ 2014 Year-in-Review Presentation |
| February Board of Directors Meeting |
| <ul style="list-style-type: none"> ▪ Resolution to Approve I-70 East Project Financing Mechanism ▪ 2014 Annual Financial Statement Presentation ▪ Monthly Progress Report |
| March Board of Directors Meeting |
| <ul style="list-style-type: none"> ▪ Adoption of 7th Budget Supplement for FY2015 ▪ Resolution to Approve Use of HPTs Procurement Guidelines for PPP Projects ▪ Resolution to Approve Appointment of New Bridge Enterprise Director ▪ Monthly Progress Report |

Other Significant Achievements

- Program staff and CDOT Financial and Accounting team continue to track bond expenditures as compared to forecasted bond spending and identify factors impacting bond spending. The program is working to confirm project schedules and budgets to help satisfy bond spending.
- Program staff prepared the Q4 FY2015 Bridge Enterprise maintenance invoice.

- CBE financial manager continued to work with CDOT administrative staff on de-programming dollars with completed phases and actively re-programming the surplus dollars back into the program via new work scope or used to cover increases to planned budgets.
- Continuing effort to track and report on actual expenditures compared with forecasted spending.
- Continue to support CDOT's Public Relations and Government Relations with ongoing updates to the CDOT/Bridge Enterprise website and monthly "dash-board" performance metric updates.
- Continuing attendance in Leading/Lagging Performance Review meetings.
- Ongoing attendance at State Auditor's Office meetings and conference calls, providing support to FASTER Process Audit activities.
- Support of I-70 Viaduct project development through attendance of multiple coordination, financing and eligibility meetings. Also participated in a Transportation Commission/Bridge Enterprise Board of Directors Special Meeting regarding the I-70 Viaduct project. Also working with Division of Finance in review of project consultant contract scope and task requisites.
- Provide ongoing updates to Program financial forecasting, impacts, and forecasts related to the Bridge Enterprise program.
- Bridge Enterprise was selected to present at ACEC of Arizona's 2015 Conference on Roads and Streets in April 2, 2015. The presentation will summarize Bridge Enterprise operations, reviewing the successes and challenges encountered during the program's tenure. Bridge Enterprise senior staff worked with CDOT public relations team to ensure the power-point presentation followed CDOT branding standards.
- Continuance of bi-weekly internal meetings to coordinate upcoming deliverables and ongoing initiatives.
- Perform ongoing updates to the program schedule, bar-chart schedule, and list of projects with SPI<0.90, and distribute to CDOT regional RTD's and program engineers. Also worked with Region staffs to implement baseline changes resulting from the adoption of Guidance Document #7 Revision 1 changes.
- Program staff attends and participates in monthly Schedule Change Control Board and Chief Engineer/RTD meetings, including preparation of agendas and supporting charts, graphs and other documents.
- Continuing coordination and compilation of required documents and memorandums for Transportation Commission and Bridge Enterprise Board meetings. Also provide monthly briefings to CDOT executive staff regarding Commission and Board agenda items.
- Attend PMO Update, Schedule Policy Coordination and Staff Bridge Unit Leaders Meetings.
- Bridge Enterprise staff continues to provide progress updates and continued policy integration efforts with the PMO as requested by CDOT.
- Coordinated with CDOT staff on development and progress of BEPM 100-year Bridge Design Life recommendations. Draft documents were being reviewed late in the period.
- Conduct monthly briefings to CDOT SMT on Bridge Enterprise Board of Directors agenda item packages. Also attend all related workshops, Commission and Board meetings.

- Attended and participated in the Innovative Contracting Advisory Committee and CM/GC Industry Committee meeting.
- Prepare materials and conduct monthly Bridge Enterprise Progress meetings.
- Assist CDOT Government Relations office in reviewing and editing reports relating to Bridge Enterprise.

Financial Information

The following is a program overview of financial statistics as of March 31, 2015.

- The program has multiple funding sources including: proceeds from the Build America Bond program, FASTER bridge dollars which is commonly referred to as the statewide pay-go program (collected yearly revenues from vehicle registrations), Bank of America Loan, and Other Funds which are primarily Federal-aid BR funding.
- From program inception (life-to-date) through March 31, 2015, a total of \$769.9M has been budgeted (all funding sources), and Expenditures and Encumbrances are \$474.9M and \$144.1M (all funding sources), respectively. Reference Table 7 below for details by funding source.
- For comparison purposes, the totals from the previous quarterly report (Q2 FY2015) are also reported in the far right column.
- There is currently \$308.2M of bond proceeds and interest earnings available, with \$307.6M budgeted. Actual expenditures were \$295.0M with an encumbrance balance of \$10.9M.

Table 7. Program Financial Statistics as of (\$ in Millions)

| | Build America Bonds 2010 A Proceeds | FASTER Bridge | Bank of America Loan | Other Funds | Total Q3 FY2015 | Total Q2 FY2015 |
|---------------------|---|------------------|-------------------------|-------------|-----------------------|-----------------------|
| Budget | \$307.6 | \$391.4 | \$40.3 | \$30.6 | \$769.9 | \$734.4 |
| Expenditures | \$295.0 | \$111.5 | \$39.0 | \$29.4 | \$474.9 | \$449.8 |
| Encumbrances | \$10.9 | \$132.1 | \$0.4 | \$0.7 | \$144.1 | \$136.0 |

The Bridge Enterprise program currently consists of one-hundred-eighteen bridges, including ninety-three (93) bridges from the Bond program; fifty-six (56) of these bridges are fully funded, and thirty-seven (37) of these bridges are partially funded with current available sources. The currently programmed amount for these one-hundred-eighteen bridges is approximately \$912.0M. Table 8 below provides an itemization of current funding sources for the Bridge Enterprise program.

Table 8. Current Allocation Plan (\$ in Millions)

| Build America Bonds | FASTER Bridge | Other Funds | Bond Interest | Total |
|------------------------|------------------|----------------|------------------|----------------|
| \$298.1 | \$531.2 | \$72.6 | \$10.1 | \$912.0 |

Economic Outlook

The following are highlights from project bid data results maintained by CDOT's Engineering Estimates and Market Analysis (EEMA) group for transportation related projects advertised during the period.

- There were on average 3.57 bidders per project during the period. This is an increase from 3.35 bidders per project from the previous quarter. An average of 3.58 bidders was reported in the first calendar quarter of 2014.
- On average, the low bid on forty-seven (47) transportation related projects bid during the reporting period was lower than the engineer's estimate by approximately 5%.
- There was one FASTER project bid during the period, which was not included in the above 47 project count because the contract delivery method is Construction Manager/General Contractor (CM/GC). The low bid was approximately 5% higher than the engineer's estimate.

The following economic statistics were reported by the Chief Economist from the Associated General Contractors (AGC) of America as reported by AGC's Data DIGest or Press Releases during the quarter. The data provides insight on economic movement associated with the Producer Price Index, Construction Employment and other economic indicators (both state and national) month-to month or year-over-year (e.g., March 2014 to March 2015).

Producer Price Index

The Producer Price Index (PPI) for inputs to construction – a weighted average of the cost of all materials used in construction plus items consumed by contractors such as diesel fuel – increased 0.4% in March; but decreased 0.8% over the past year (March 2014 to March 2015) (Vol. 15, No. 15 Data DIGest).

Construction Employment

- Construction firms added jobs in 41 states between March 2014 to March 2015; nine states lost construction jobs for the year. Construction employment remained the same in two states year to year. (AGC 4/21/2015 Press Release).
- Construction employment expanded in 249 out of 358 metropolitan areas, declined in 56 and was unchanged in 53 between March 2014 and March 2015. (AGC 4/29/2015 Press Release).

Other

- Construction spending slipped in March, totaling \$967 billion at a seasonally adjusted annual rate, down 0.6% lower than February, but 2.0% higher than in March 2014. (AGC 5/1/2015 press release).
- Colorado was ranked fourth best in the country in the percent of new construction jobs (14,500) gained at 10.4% year-over-year (March 2014 to March 2015) as reported by the AGC from the Bureau of Labor Statistics and U.S. Department of Labor.
- The Denver-Aurora-Lakewood, CO metropolitan area was ranked 24th out of 358 metropolitan areas in the percent of new construction jobs gained (11,400) at 13% year-over-year (March 2014 to March 2015). (AGC 4/29/2015 Press Release)

- The National Highway Construction Cost Index (NHCCI) is a measure of the average change over time in the prices paid by state transportation departments for roadway construction materials and services. Measures are updated quarterly. The index increased 3.3% from December 2014 to December 2015 (FHWA website). March comparisons were not available at the time of this report.

Although construction firms added jobs in forty-one states over the past year through March, construction employment declined in twenty-nine states from February to March of this year. “The construction industry has clearly hit a soft patch,” said Stephen Sandherr, the CEO of Associated General Contractors (AGC). “After 14 months of steady job gains, construction employment suffered in March,” added Ken Simonson, the association's chief economist.

Association officials said the industry’s recovery was at risk amid weakening demand and urged Congress and the Obama administration to act quickly to figure out a way to pay for and pass legislation to repair aging roads, bridges and transit systems, as well as other public infrastructure (AGC 4/21/2015 press release).

Current List of Completed Bridges Q3 - FY2015

| Original Bridge Number | New Bridge Number | Region | County | Facility Carried over Featured Intersection | Status |
|------------------------|--------------------------------|--------|-------------|---|-----------------------|
| F-16-BM | F-16-XK | 1 | DENVER | SH 88 ML over RR, LAKEWOOD GULCH | Construction Complete |
| F-16-DT | F-16-XS | 1 | DENVER | I 25 ML NBND over US 85 ML (SANTA FE) | Construction Complete |
| E-16-HI | E-16-XQ | 1 | JEFFERSON | SH 58 ML over CO.RD,RR SPUR | Construction Complete |
| E-17-DN | E-17-ADL | 1 | ADAMS | I 76 ML EBND over UP RR | Construction Complete |
| F-16-DW | F-16-XS | 1 | DENVER | I 25 ML SBND over US 85 ML (SANTA FE) | Construction Complete |
| G-16-C | G-16-F | 1 | DOUGLAS | US 85 ML over DRAW; COOK RANCH to LOUVIERS | Construction Complete |
| F-16-DP | F-16-XB | 1 | DENVER | I 25 ML over RDWY,RR, SOUTH PLATTE RVR; BRONCO BRIDGE | Construction Complete |
| E-17-DM | E-17-ADL | 1 | ADAMS | I 76 ML WBND over UP RR | Construction Complete |
| E-16-FX | E-16-XR | 1 | JEFFERSON | WASHINGTON STREET over SH 58 ML | Construction Complete |
| E-17-HG | E-17-ADP | 1 | ADAMS | 104TH AVE over I 25 ML | Construction Complete |
| E-17-GM | E-17-AET | 1 | ADAMS | I 76 ML EBND over SOUTH PLATTE RIVER; NE of JCT I 270 | Construction Complete |
| E-16-GQ | E-16-YD | 1 | ADAMS | SH 95 ML (SHERIDAN BLVD) over UP RR, RR SPUR; N of JCT I 76 in WHEATRIDGE | Construction Complete |
| E-16-FW | E-16-YQ E-16-YZ(ped bridge) | 1 | DENVER | PECOS STREET over I 70 ML; in DENVER | Construction Complete |
| F-16-FY | F-16-YG | 1 | ARAPAHOE | US 285 ML SBND over SH 88 ML | Construction Complete |
| F-16-I | F-16-YK | 1 | JEFFERSON | US 285 ML SBND over PIERCE STREET | Construction Complete |
| F-17-AE | F-17-WP | 1 | DENVER | SH 30 ML/HAVANA ST over CHERRY CREEK | Construction Complete |
| E-17-EZ | E-17-ACR | 1 | ADAMS | 84TH AVE over I 25 ML | Construction Complete |
| F-16-FZ | F-16-YH | 1 | ARAPAHOE | US 285 ML NBND over SH 88 ML | Construction Complete |
| F-16-FW | F-16-YQ | 1 | DENVER | US 287+SH 88 (FEDERAL) over US 40 ML (COLFAX) | Construction Complete |
| E-17-HL | E-17-AEA | 1 | ADAMS | I 76 ML EBND over SH 224 ML | Construction Complete |
| F-16-CS | F-16-YR | 1 | JEFFERSON | SH121 ML-WADSWORTH over BEAR CREEK; N OF 285 | Construction Complete |
| F-16-AM | F-16-WI | 1 | JEFFERSON | US 285 ML SBND over SH 121 ML | Construction Complete |
| F-16-AY | F-16-WI | 1 | JEFFERSON | US 285 ML NBND over SH 121 ML | Construction Complete |
| E-17-AR | E-17-ADR | 1 | ADAMS | SH 7 ML over SOUTH PLATTE RIVER | Construction Complete |
| E-16-FP | E-16-YF | 1 | ADAMS | 80TH AVE over US 36 ML | Construction Complete |
| G-16-B | G-16-E | 1 | DOUGLAS | US 85 ML over DRAW; COOK RANCH to LOUVIERS | Construction Complete |
| E-17-GL | E-17-AET | 1 | ADAMS | I 76 ML WBND over SOUTH PLATTE RIVER; NE of JCT I 270 | Construction Complete |
| E-16-FL | E-16-YC | 1 | BROOMFIELD | CNTY RD / OLD WADS over US 36 ML (DENVER/BOULDER TNPK); SE of JCT SH 121 | Construction Complete |
| E-16-FK | E-16-YB | 1 | BROOMFIELD | SH 121 ML SBND- WADSWORTH PKWY over US 36 ML (DENVER/BOULDER TNPK) | Construction Complete |
| F-16-F | F-16-FA | 1 | ARAPAHOE | US 85(SANTA FE) ML NBND over DAD CLARK GULCH; in LITTLETON | Construction Complete |
| E-17-GE | E-17-AER | 1 | DENVER | I 70 ML WBND over SAND CREEK; E of QUEBEC ST | Construction Complete |
| E-17-BY | E-17-AER | 1 | DENVER | I 70 ML EBND over SAND CREEK; E of QUEBEC ST | Construction Complete |
| F-16-FL | F-16-XQ | 1 | JEFFERSON | US 6 ML over SH 95 ML/SHERIDAN AVE. | Construction Complete |
| E-17-EX | E-17-GF | 1 | ADAMS | PEORIA STREET over I 76 ML; NE of JCT US 85 | Construction Complete |
| F-19-B | F-19-BL | 1 | ARAPAHOE | US 36 ML over COMANCHE CREEK; E of STRASBURG | Construction Complete |
| F-14-B | F-14-AZ | 1 | CLEAR CREEK | I 70 FRONTAGE RD over CLEAR CREEK (SR); W IDAHO SPRINGS | Construction Complete |
| E-16-HA | E-16-HG | 1 | JEFFERSON | SH 58 ML over FORD STREET, WASH | Construction Complete |
| F-16-OG | Rehab, no new number | 1 | DENVER | RAMP to I 25 NBND over US 6 ML | Construction Complete |

Current List of Completed Bridges Q3 - FY2015

| Original Bridge Number | New Bridge Number | Region | County | Facility Carried over Featured Intersection | Status |
|------------------------|------------------------------|--------|------------|--|-----------------------|
| P-18-B | P-18-BK | 2 | LAS ANIMAS | I 25 ML NBND over PURGATOIRE RIVER | Construction Complete |
| P-18-S | P-18-BL | 2 | LAS ANIMAS | I 25 ML SBND over PURGATOIRE RIVER | Construction Complete |
| I-18-G | I-18-BQ | 2 | EL PASO | US 24 ML over DRAW; E of FALCON | Construction Complete |
| K-16-Q | K-16-AM | 2 | FREMONT | SH 120 ML over HARDSCRABBLE CREEK | Construction Complete |
| K-18-Z | K-18-GS & K-18-GT | 2 | PUEBLO | SH 96 ML over RDWY, RR, ARKANSAS RIVER | Construction Complete |
| N-16-L | N-16-Q | 2 | HUERFANO | SH 69 ML over TURKEY CREEK | Construction Complete |
| M-20-A | M-20-D | 2 | PUEBLO | SH 10 ML over SAUNDERS ARROYO | Construction Complete |
| L-21-U | 096B103590BL | 2 | CROWLEY | SH 96 ML over NUMA DRAIN CANAL | Construction Complete |
| L-28-F | L-28-H | 2 | PROWERS | SH 89 ML over ARKANSAS RIVER; S of HOLLY | Construction Complete |
| L-19-C | L-19-Y | 2 | PUEBLO | US 50 BUS RT WBND over ST CHARLES RIVER | Construction Complete |
| J-18-T | 025A122564NL | 2 | EL PASO | I 25 ML NBND over DRAW; S of FOUNTAIN | Construction Complete |
| G-12-L | Rehab, no new number | 2 | PARK | SH 9 ML over BUCKSKIN GULCH; in ALMA | Construction Complete |
| H-17-M | Rehab, no new number | 2 | EL PASO | I 25 ML over DRAW | Construction Complete |
| M-17-R | Rehab, no new number | 2 | PUEBLO | I 25 ML over DRAW | Construction Complete |
| J-18-S | 025A122850NL | 2 | EL PASO | I 25 ML NBND over DRAW; S of FOUNTAIN | Construction Complete |
| K-16-W | K-16-F | 2 | FREMONT | SH 67 ML over DRAW | Construction Complete |
| K-16-K | K-16-AL | 2 | FREMONT | SH 120 ML over RR, ARKANSAS RIVER; E of PORTLAND | Construction Complete |
| N-17-N | N-17-BU | 2 | HUERFANO | I 25 ML NBND over MISSOURI CREEK | Construction Complete |
| J-15-B | J-15-F | 2 | FREMONT | SH 9 ML over CURRANT CREEK; NW of JCT US 50 | Construction Complete |
| M-24-B | M-24-K | 2 | BENT | SH 101 ML over DRAW; S of LAS ANIMAS and JCT US 50 | Construction Complete |
| P-17-H | P-17-AG | 2 | LAS ANIMAS | SH 12 ML over PURGATOIRE RIVER; NW of WESTON | Construction Complete |
| H-18-A | H-18-AD | 2 | EL PASO | US 24 ML over BLACK SQUIRREL CREEK; W of PEYTON | Construction Complete |
| I-17-AE | Rehab, no new number | 2 | EL PASO | US 24 ML EBND over FOUNTAIN CREEK | Construction Complete |
| I-15-Y | Rehab, no new number | 2 | TELLER | US 24 ML over TWIN CREEK | Construction Complete |
| M-21-D | M-21-F | 2 | OTERO | US 350 ML over DRAW; SW of LA JUNTA & TIMPAS | Construction Complete |
| O-16-A | O-16-C | 2 | HUERFANO | SH 12 ML over CUCHARAS RIVER; S of LA VETA | Construction Complete |
| L-22-E | L-22-CM | 2 | OTERO | SH 266 ML over FT LYON STORAGE CANAL; NE of ROCKY FORD | Construction Complete |
| L-22-F | L-22-CJ | 2 | CROWLEY | SH 96 ML over BLACK DRAW | Construction Complete |
| O-25-I | O-25-AB | 2 | BACA | US 160 ML over DRAW; W of PRITCHETT | Construction Complete |
| O-26-L | 160C461737BR 160C461739BR | 2 | BACA | US 160 ML over CAT CREEK; W of SPRINGFIELD | Construction Complete |
| K-23-C | K-23-W | 2 | KIOWA | SH 96 ML over DRAW | Construction Complete |
| H-16-K | H-16-N | 2 | TELLER | SH 67 ML over DRAW | Construction Complete |
| L-24-F | Rehab, no new number | 2 | BENT | SH 101 ML over PURGATOIRE RIVER; S of LAS ANIMAS | Construction Complete |
| L-22-O | L-22-CN | 2 | OTERO | SH 266 ML over HOLBROOK CANAL; NE of ROCKY FORD | Construction Complete |
| K-23-B | K-23-X | 2 | KIOWA | SH 96 ML over DRAW | Construction Complete |
| O-19-H | O-19-R | 2 | LAS ANIMAS | US 350 ML over PURGATOIRE RIVER; NE of JCT US 160 | Construction Complete |
| K-24-A | K-24-B | 2 | KIOWA | SH 96 ML over DRAW | Construction Complete |
| L-22-K | L-22-CO | 2 | OTERO | SH 71 ML over FT LYON CANAL; NW of ROCKY FORD | Construction Complete |

Current List of Completed Bridges Q3 - FY2015

| Original Bridge Number | New Bridge Number | Region | County | Facility Carried over Featured Intersection | Status |
|------------------------|---------------------------------|--------|-------------------|---|-----------------------|
| N-17-C | N-17-BV | 2 | HUERFANO | I 25 BUS RT over SULL CREEK; Near WALSENBURG | Construction Complete |
| O-19-J | O-19-AH | 2 | LAS ANIMAS | US 350 ML over DRAW; S of MODEL | Construction Complete |
| O-25-H | O-25-AA | 2 | BACA | US 160 ML over N FK SAND ARROYO; SW of PRITCHETT | Construction Complete |
| P-19-AD | P-19-AV | 2 | LAS ANIMAS | SH 239(CO RD 75) ML over IRRIGATION CANAL; in TRINIDAD | Construction Complete |
| J-09-G | J-09-F | 3 | GUNNISON | SH 114 ML over TOMICHI CREEK | Construction Complete |
| H-09-B | Rehab, no new number | 3 | PITKIN | SH 82 ML over CO RD, CASTLE CREEK | Construction Complete |
| H-11-D | H-11-AC | 3 | LAKE | US 24 ML over CALIFORNIA GULCH | Construction Complete |
| H-11-F | 024A178974BR | 3 | LAKE | US 24 ML over CALIFORNIA GULCH | Construction Complete |
| G-11-F | G-11-G | 3 | LAKE | US 24 ML over UP RR | Construction Complete |
| F-09-H | F-09-AS | 3 | EAGLE | US 6 ML over EAGLE RIVER; E of EAGLE | Construction Complete |
| J-09-D | Rehab, no new number | 3 | GUNNISON | US 50 SERVICE RD over GUNNISON RVR (SR); W. SIDE of GUNNISON | Construction Complete |
| F-08-F | F-08-AJ | 3 | EAGLE | I 70 SERVICE RD over COLORADO RIVER (SR); N. of DOTSERO INT. | Construction Complete |
| J-09-C | Rehab, no new number | 3 | GUNNISON | US 50 SERVICE RD over GUNNISON RVR OVERFLOW (SR); W. SIDE of GUNNISON | Construction Complete |
| C-09-C | C-09-AU | 3 | ROUTT | US 40 ML over E FORK ELK RIVER; W of STEAMBOAT SPGS | Construction Complete |
| C-15-J | C-15-AM | 4 | LARIMER | US 34 ML over BIG THOMPSON RIVER | Construction Complete |
| C-15-I | C-15-AL | 4 | LARIMER | US 34 ML over BIG THOMPSON RIVER | Construction Complete |
| A-24-C A-26-F | 138A014381BL minor structure | 4 | LOGAN SEDGWICK | US 138 ML over DITCH/DRAW | Construction Complete |
| D-17-AK | D-17-FK | 4 | WELD | SH 66 ML over ST VRAIN RIVER; W of PLATTEVILLE | Construction Complete |
| G-22-J | G-22-CD | 4 | LINCOLN | US 24 ML over DRAW; E of LIMON | Construction Complete |
| C-17-BN | C-17-FS | 4 | WELD | I 25 SERVICE RD over LITTLE THOMPSON RIVER; S of JCT SH 56 | Construction Complete |
| B-16-AE | B-16-AJ | 4 | LARIMER | US 287 ML over DRAW; N of JCT SH 1 | Construction Complete |
| G-21-B | G-21-AP | 4 | ELBERT | I 70 FRONTAGE RD over DRAW (SR) | Construction Complete |
| B-17-C | B-17-DF | 4 | WELD | US 85 ML(NUNN BRIDGE) over UPRR | Construction Complete |
| B-17-L | B-17-BU | 4 | WELD | SH 14 ML over COALBANK CREEK; W of AULT | Construction Complete |
| D-28-B | D-28-U | 4 | YUMA | US 34 ML over N FK REPUBLICAN RIVER; W of LAIRD | Construction Complete |
| M-06-K | M-06-L | 5 | SAN JUAN | US 550 ML over MINERAL CREEK | Construction Complete |
| L-06-A | L-06-B | 5 | OURAY | US 550 ML over BEAR CREEK | Construction Complete |
| O-05-AQ | Rehab, no new number | 5 | LA PLATA | US 160 ML over ANIMAS RIVER | Construction Complete |
| L-04-B | L-04-H | 5 | SAN MIGUEL | SH 145 ML over LEOPARD CREEK; JCT SH 62 - PLACERVILLE | Construction Complete |
| L-05-B | L-05-E | 5 | OURAY | SH 62 ML over UNCOMPAHGRE RIVER; SHERMAN ST in RIDGWAY | Construction Complete |

List of FASTER-Eligible Bridges Q3 - FY2015

| Original Bridge Number | Region | County | Facility Carried over Featured Intersection | Current Budget | Current Const. Start Date | Current Completion Date | Status | Project Delivery Method1USE |
|------------------------|--------|------------|---|----------------|---------------------------|-------------------------|-----------------------|-----------------------------|
| F-16-BM | 1 | DENVER | SH 88 ML over RR, LAKEWOOD GULCH | \$ 6,000,000 | | | Construction Complete | D-B-B |
| F-16-DT | 1 | DENVER | I 25 ML NBND over US 85 ML (SANTA FE) | \$ 17,921,726 | 07/11/11 | 07/07/14 | Construction Complete | D-B-B |
| E-16-HI | 1 | JEFFERSON | SH 58 ML over CO.RD.RR SPUR | \$ - | | | Construction Complete | D-B-B |
| E-17-DN | 1 | ADAMS | I 76 ML EBND over UP RR | \$ - | | | Construction Complete | D-B-B |
| F-16-DW | 1 | DENVER | I 25 ML SBND over US 85 ML (SANTA FE) | See F-16-DT | 07/11/11 | 07/07/14 | Construction Complete | D-B-B |
| G-16-C | 1 | DOUGLAS | US 85 ML over DRAW; COOK RANCH to LOUVIERS | \$ - | 10/19/12 | 11/15/13 | Construction Complete | D-B-B |
| F-16-DP | 1 | DENVER | I 25 ML over RDWY,RR, SOUTH PLATTE RVR; BRONCO BRIDGE | \$ 24,359,991 | 05/02/11 | 07/11/13 | Construction Complete | D-B-B |
| E-17-DM | 1 | ADAMS | I 76 ML WBND over UP RR | \$ 6,750,000 | | | Construction Complete | D-B-B |
| E-16-FX | 1 | JEFFERSON | WASHINGTON STREET over SH 58 ML | \$ - | 02/20/08 | 11/02/09 | Construction Complete | D-B-B |
| E-17-HG | 1 | ADAMS | 104TH AVE over I 25 ML | \$ 8,536,596 | 05/21/09 | 12/20/10 | Construction Complete | D-B-B |
| E-17-GM | 1 | ADAMS | I 76 ML EBND over SOUTH PLATTE RIVER; NE of JCT I 270 | \$ 13,123,686 | 09/12/11 | 07/23/12 | Construction Complete | D-B-B w/ A+B bid |
| E-16-GQ | 1 | ADAMS | SH 95 ML (SHERIDAN BLVD) over UP RR, RR SPUR; N of JCT I 76 in WHEATRIDGE | \$ 6,989,679 | 04/24/12 | 11/01/13 | Construction Complete | D-B-B |
| E-16-FW | 1 | DENVER | PECOS STREET over I 70 ML; in DENVER | \$ 25,504,108 | 11/05/12 | 10/01/13 | Construction Complete | CMGC |
| F-16-FY | 1 | ARAPAHOE | US 285 ML SBND over SH 88 ML | \$ - | 08/31/10 | 07/31/11 | Construction Complete | D-B-B |
| F-16-I | 1 | JEFFERSON | US 285 ML SBND over PIERCE STREET | \$ - | 08/31/10 | 07/31/11 | Construction Complete | D-B-B |
| F-17-AE | 1 | DENVER | SH 30 ML/HAVANA ST over CHERRY CREEK | \$ 5,778,918 | 02/07/11 | 06/15/12 | Construction Complete | D-B-B |
| E-17-EZ | 1 | ADAMS | 84TH AVE over I 25 ML | \$ 11,949,236 | 02/24/11 | 10/31/12 | Construction Complete | D-B-B |
| F-16-EF | 1 | DENVER | US 6 ML over SOUTH PLATTE RIVER; W SIDE of I-25 | \$ 16,558,311 | 01/15/14 | 09/30/15 | In Construction | D/B |
| F-16-FZ | 1 | ARAPAHOE | US 285 ML NBND over SH 88 ML | \$ - | 08/31/10 | 07/31/11 | Construction Complete | D-B-B |
| F-16-FW | 1 | DENVER | US 287+SH 88 (FEDERAL) over US 40 ML (COLFAX) | \$ 7,919,733 | 09/26/11 | 01/16/13 | Construction Complete | D-B-B |
| F-16-EN | 1 | DENVER | US 6 ML over BRYANT STREET; W SIDE OF I-25 | \$ 36,654,496 | 01/15/14 | 09/30/15 | In Construction | D/B |
| E-17-HL | 1 | ADAMS | I 76 ML EBND over SH 224 ML | \$ - | | | Construction Complete | D-B-B |
| F-16-CS | 1 | JEFFERSON | SH121 ML-WADSWORTH over BEAR CREEK; N OF 285 | \$ 10,116,162 | 03/26/12 | 08/30/13 | Construction Complete | D-B-B |
| F-16-AM | 1 | JEFFERSON | US 285 ML SBND over SH 121 ML | \$ 47,395,760 | 08/31/10 | 07/31/11 | Construction Complete | D-B-B |
| F-16-AY | 1 | JEFFERSON | US 285 ML NBND over SH 121 ML | \$ - | 08/31/10 | 07/31/11 | Construction Complete | D-B-B |
| E-17-AR | 1 | ADAMS | SH 7 ML over SOUTH PLATTE RIVER | \$ - | 05/19/09 | 01/07/11 | Construction Complete | D-B-B |
| E-16-FP | 1 | ADAMS | 80TH AVE over US 36 ML | \$ 11,359,268 | 05/06/10 | 10/20/11 | Construction Complete | D-B-B |
| F-16-EJ | 1 | DENVER | US 6 ML over BNSF RR; E SIDE OF I-25 | \$ 13,539,388 | 01/15/14 | 09/30/15 | In Construction | D/B |
| G-16-B | 1 | DOUGLAS | US 85 ML over DRAW; COOK RANCH to LOUVIERS | \$ 3,191,328 | 10/19/12 | 11/15/13 | Construction Complete | D-B-B |
| E-17-GL | 1 | ADAMS | I 76 ML WBND over SOUTH PLATTE RIVER; NE of JCT I 270 | See E-17-GM | 09/12/11 | 07/23/12 | Construction Complete | D-B-B w/ A+B bid |
| E-17-FX | 1 | DENVER | I 70 ML over US 6, RR, CITY ST | \$ 97,829,999 | - | - | In Design | Design Phase |
| E-16-FL | 1 | BROOMFIELD | CNTY RD / OLD WADS over US 36 ML (DENVER/BOULDER TNPK); SE of JCT SH 121 | \$ 13,355,054 | 05/10/12 | 10/30/13 | Construction Complete | D/B |
| E-16-FK | 1 | BROOMFIELD | SH 121 ML SBND- WADSWORTH PKWY over US 36 ML (DENVER/BOULDER TNPK) | \$ 28,151,957 | 05/10/12 | 10/30/13 | Construction Complete | D/B |
| G-17-A | 1 | DOUGLAS | US 85 ML over SAND CREEK | \$ 487,800 | | | In Design | D-B-B |
| F-16-F | 1 | ARAPAHOE | US 85(SANTA FE) ML NBND over DAD CLARK GULCH; in LITTLETON | \$ 3,031,094 | 11/27/12 | 09/05/13 | Construction Complete | Streamlined D/B |
| E-17-ER | 1 | ADAMS | SH 44 ML(104TH AVE) over BULL SEEP; W of US 85 | \$ 13,656,222 | 01/06/14 | 06/30/15 | In Construction | D-B-B |
| E-17-EW | 1 | DENVER | I 70 ML EBND over UP RR; W of QUEBEC STREET | \$ - | NP | NP | Not Programmed | Not Programmed |
| E-17-GE | 1 | DENVER | I 70 ML WBND over SAND CREEK; E of QUEBEC ST | \$ 10,783,656 | 07/29/11 | 07/06/12 | Construction Complete | D-B-B w/ A+B bid |

List of FASTER-Eligible Bridges Q3 - FY2015

| Original Bridge Number | Region | County | Facility Carried over Featured Intersection | Current Budget | Current Const. Start Date | Current Completion Date | Status | Project Delivery Method1USE |
|------------------------|--------|-------------|---|----------------|---------------------------|-------------------------|-----------------------|-----------------------------|
| E-17-BY | 1 | DENVER | I 70 ML EBND over SAND CREEK; E of QUEBEC ST | See E-17-GE | 07/29/11 | 07/06/12 | Construction Complete | D-B-B w/ A+B bid |
| F-15-BL | 1 | CLEAR CREEK | I 70 ML WBND over US 6, CLEAR CREEK | \$ 30,000,000 | NoAct | NoAct | No Action Proposed | Not Programmed |
| F-16-FL | 1 | JEFFERSON | US 6 ML over SH 95 ML/SHERIDAN AVE. | \$ 13,548,993 | 01/03/12 | 07/12/13 | Construction Complete | D-B-B |
| F-17-DM | 1 | ARAPAHOE | SH 88 ML/ARAP RD over CHERRY CREEK; W OF SH 83(PARKER RD) | \$ 29,984,591 | 10/21/13 | 05/01/15 | In Construction | D-B-B |
| E-17-EX | 1 | ADAMS | PEORIA STREET over I 76 ML; NE of JCT US 85 | \$ 5,927,917 | 07/24/13 | 12/05/13 | Construction Complete | D-B-B |
| E-17-CA | 1 | ADAMS | SH 44 ML(104TH AVE) over SOUTH PLATTE RIVER; W of JCT US 85 | See E-17-ER | 01/06/14 | 06/30/15 | In Construction | D-B-B |
| F-17-GO | 1 | ARAPAHOE | US 40 ML(E COLFAX) EBND over TOLLGATE CREEK; W of I-225 | \$ 14,047,754 | 06/09/14 | 01/31/16 | In Construction | D-B-B |
| F-19-B | 1 | ARAPAHOE | US 36 ML over COMANCHE CREEK; E of STRASBURG | \$ 1,862,583 | 04/23/12 | 06/15/12 | Construction Complete | D-B-B |
| E-17-AH | 1 | DENVER | ON 40TH AVE W of SH 2 ML over BNSF RR | \$ - | NoAct | NoAct | No Action Proposed | Transfer out of CBE |
| E-17-EP | 1 | ADAMS | SH6 DITCH RIDER RD over BURLINGTON CANAL SR | \$ - | NoAct | NoAct | No Action Proposed | Not Programmed |
| F-16-GG | 1 | DENVER | PERRY STREET over US 6 ML; W of FEDERAL | \$ - | NoAct | NoAct | No Action Proposed | Transfer out of CBE |
| E-17-DC | 1 | ADAMS | I 76 ML EBND over UP RR; E of JCT US 85 | \$ 17,856,815 | 08/06/14 | 11/06/15 | In Construction | D-B-B |
| E-17-DU | 1 | ADAMS | I 76 ML WBND over UP RR; E of JCT US 85 | See E-17-DC | 08/06/14 | 09/15/15 | In Construction | D-B-B |
| F-14-B | 1 | CLEAR CREEK | I 70 FRONTAGE RD over CLEAR CREEK (SR); W IDAHO SPRINGS | \$ 1,923,453 | 07/19/10 | 11/23/10 | Construction Complete | D-B-B |
| F-15-D | 1 | CLEAR CREEK | I 70 FRONTAGE RD over CLEAR CREEK (SR) | \$ 275,000 | NoAct | NoAct | No Action Proposed | Not Programmed |
| F-14-Y | 1 | CLEAR CREEK | I 70(BUSINESS RT) over I 70 ML | \$ 11,599,522 | 04/15/15 | 10/31/15 | In Design | CMGC |
| F-17-F | 1 | ARAPAHOE | US 40 ML(E COLFAX) EBND over SAND CREEK; E of I-225 | \$ 10,605,489 | 07/23/13 | 04/15/15 | In Construction | D-B-B |
| E-16-AA | 1 | ADAMS | US 287 ML over BNSF RR SPUR; at 69TH AVE | \$ 20,410,747 | 01/29/15 | 09/22/16 | In Construction | D-B-B |
| E-16-HA | 1 | JEFFERSON | SH 58 ML over FORD STREET, WASH | \$ 6,654,378 | 06/04/13 | 06/27/14 | Construction Complete | D-B-B |
| E-17-DF | 1 | DENVER | I 70 ML WBND over UP RR W of QUEBEC STREET | \$ - | NP | NP | Not Programmed | Not Programmed |
| E-17-IC | 1 | ADAMS | YORK STREET over I 270 ML | \$ - | NP | NP | Not Programmed | Not Programmed |
| E-17-JP | 1 | DENVER | I 70 ML over HAVANA ST, UP RR | \$ 34,823,400 | 04/01/15 | 05/01/17 | In Construction | D/B |
| E-17-KR | 1 | DENVER | I 270 ML EBND over I 70 ML | \$ - | NP | NP | Not Programmed | Not Programmed |
| F-16-ER | 1 | JEFFERSON | US 6 ML over GARRISON STREET (LAKEWOOD) | \$ 15,169,615 | 01/15/15 | 11/06/15 | In Construction | Streamlined D/B |
| F-16-OG | 1 | DENVER | RAMP to I 25 NBND over US 6 ML | \$ - | | 12/20/12 | Construction Complete | D-B-B |
| F-17-BS | 1 | ARAPAHOE | US 40 ML(E COLFAX) WBND over SAND CREEK; E of I-225 | See F-17-F | 07/23/13 | 04/15/15 | In Construction | D-B-B |
| F-17-GA | 1 | ARAPAHOE | US 40 ML(E COLFAX) WBND over TOLLGATE CREEK; W of I-225 | See F-17-GO | 06/09/14 | 01/31/16 | In Construction | D-B-B |
| F-19-AF | 1 | ADAMS | COUNTY ROAD over I 70 ML | \$ - | NP | NP | Not Programmed | Not Programmed |
| F-19-F | 1 | ARAPAHOE | US 36 ML over DRAW | \$ - | NP | NP | Not Programmed | Not Programmed |
| P-18-B | 2 | LAS ANIMAS | I 25 ML NBND over PURGATOIRE RIVER | \$ - | | | Construction Complete | D-B-B |
| P-18-S | 2 | LAS ANIMAS | I 25 ML SBND over PURGATOIRE RIVER | \$ - | 12/01/06 | | Construction Complete | D-B-B |
| I-18-G | 2 | EL PASO | US 24 ML over DRAW; E of FALCON | \$ - | | | Construction Complete | D-B-B |
| K-16-Q | 2 | FREMONT | SH 120 ML over HARDSCRABBLE CREEK | \$ - | | | Construction Complete | D-B-B |
| K-18-Z | 2 | PUEBLO | SH 96 ML over RDWY, RR, ARKANSAS RIVER | \$ - | 11/07/07 | 04/01/11 | Construction Complete | D-B-B |
| N-16-L | 2 | HUERFANO | SH 69 ML over TURKEY CREEK | \$ 2,474,988 | 06/22/11 | 07/15/11 | Construction Complete | D-B-B |
| M-20-A | 2 | PUEBLO | SH 10 ML over SAUNDERS ARROYO | \$ 2,000,000 | | | Construction Complete | D-B-B |
| L-21-U | 2 | CROWLEY | SH 96 ML over NUMA DRAIN CANAL | \$ - | | | Construction Complete | D-B-B |
| L-28-F | 2 | PROWERS | SH 89 ML over ARKANSAS RIVER; S of HOLLY | \$ 6,369,958 | 02/16/11 | 04/30/12 | Construction Complete | D-B-B |

List of FASTER-Eligible Bridges Q3 - FY2015

| Original Bridge Number | Region | County | Facility Carried over Featured Intersection | Current Budget | Current Const. Start Date | Current Completion Date | Status | Project Delivery Method1USE |
|------------------------|--------|------------|---|----------------|---------------------------|----------------------------|-----------------------|-----------------------------|
| L-19-C | 2 | PUEBLO | US 50 BUS RT WBND over ST CHARLES RIVER | \$ 2,956,532 | 10/16/09 | 07/22/10 | Construction Complete | D-B-B |
| J-18-T | 2 | EL PASO | I 25 ML NBND over DRAW; S of FOUNTAIN | See J-18-S | 02/20/12 | 08/17/12 | Construction Complete | Streamlined D/B |
| G-12-L | 2 | PARK | SH 9 ML over BUCKSKIN GULCH; in ALMA | \$ 322,466 | 9/5/11 | 12/29/11 | Construction Complete | D-B-B |
| H-17-M | 2 | EL PASO | I 25 ML over DRAW | \$ - | 03/01/13 | 06/01/14 | Construction Complete | D/B |
| M-17-R | 2 | PUEBLO | I 25 ML over DRAW | \$ - | | | Construction Complete | D-B-B |
| J-18-S | 2 | EL PASO | I 25 ML NBND over DRAW; S of FOUNTAIN | \$ 1,150,693 | 02/20/12 | 08/17/12 | Construction Complete | Streamlined D/B |
| K-16-W | 2 | FREMONT | SH 67 ML over DRAW | \$ - | | 09/30/13 | Construction Complete | CDOT |
| K-16-K | 2 | FREMONT | SH 120 ML over RR, ARKANSAS RIVER; E of PORTLAND | \$ 6,135,195 | 10/08/12 | 06/27/14 | Construction Complete | D-B-B |
| K-18-AX | 2 | PUEBLO | I 25 ML NBND over US 50 BUS. RTE. | \$ 3,465,627 | 07/07/15 | 09/17/15 | In Design | D/B |
| N-17-N | 2 | HUERFANO | I 25 ML NBND over MISSOURI CREEK | \$ 2,521,902 | 01/27/11 | 09/01/11 | Construction Complete | D-B-B |
| J-15-B | 2 | FREMONT | SH 9 ML over CURRANT CREEK; NW of JCT US 50 | \$ 1,856,602 | 05/04/11 | 10/31/11 | Construction Complete | Modified D/B |
| K-18-CK | 2 | PUEBLO | I 25 ML NBND over NP RR, ILEX ST, BENNET ST; N of JCT SH 50 E | See K-18-CL | 06/01/15 | 08/31/17 | In Design | D/B |
| K-18-CL | 2 | PUEBLO | I 25 ML SBND over NP RR, ILEX ST, BENNET ST; S of JCT SH 96 | \$ 41,720,852 | 06/01/15 | 08/31/17 | In Design | D/B |
| K-18-R | 2 | PUEBLO | US 50 BUS EBND over ARKANSAS RIVER | \$ 5,004,794 | 09/25/15 | 11/02/16 | In Design | D/B |
| M-24-B | 2 | BENT | SH 101 ML over DRAW; S of LAS ANIMAS and JCT US 50 | \$ 4,000,391 | 03/29/12 | (design) 10/31/12 | Construction Complete | Modified D/B |
| P-17-H | 2 | LAS ANIMAS | SH 12 ML over PURGATOIRE RIVER; NW of WESTON | \$ 2,283,354 | 02/19/12 | 10/19/11 | Construction Complete | Modified D/B |
| H-18-A | 2 | EL PASO | US 24 ML over BLACK SQUIRREL CREEK; W of PEYTON | \$ 3,282,627 | 11/15/11 | 08/17/12 | Construction Complete | D-B-B |
| L-28-C | 2 | PROWERS | US 50 ML over BNSF RR; E of GRANADA | \$ 8,308,887 | 02/23/15 | 07/01/16 | In Construction | D-B-B |
| L-27-S | 2 | PROWERS | US 50 ML over DRAW; E of LAMAR | See L-28-C | 02/23/15 | 07/01/16 | In Construction | D-B-B |
| I-17-AE | 2 | EL PASO | US 24 ML EBND over FOUNTAIN CREEK | \$ - | 08/04/10 | 10/21/10 | Construction Complete | D-B-B |
| N-17-AD | 2 | HUERFANO | I 25 ML SBND over US 160 ML, RR SPUR | \$ 8,800,000 | NoAct | NoAct | No Action Proposed | Not Programmed |
| I-15-Y | 2 | TELLER | US 24 ML over TWIN CREEK | \$ - | 08/04/10 | 10/21/10 | Construction Complete | D-B-B |
| L-18-AQ | 2 | PUEBLO | NORTHERN AVE over I 25 ML | \$ 4,166,716 | 09/21/15 | 04/29/16 | In Design | D/B |
| M-21-D | 2 | OTERO | US 350 ML over DRAW; SW of LA JUNTA & TIMPAS | \$ 1,959,159 | 10/19/11 | 05/18/12 | Construction Complete | D-B-B |
| L-18-AU | 2 | PUEBLO | MESA AVE over I 25 ML | \$ 3,523,836 | 12/21/15 | 05/18/16 | In Design | D/B |
| O-16-A | 2 | HUERFANO | SH 12 ML over CUCHARAS RIVER; S of LA VETA | See P-17-H | 02/19/12 | (design) 11/15/12 | Construction Complete | Modified D/B |
| L-22-E | 2 | OTERO | SH 266 ML over FT LYON STORAGE CANAL; NE of ROCKY FORD | See L-22-O | 08/20/12 | (design) 3/7/13 (const) | Construction Complete | CMGC |
| L-22-F | 2 | CROWLEY | SH 96 ML over BLACK DRAW | \$ - | 08/18/10 | 09/21/11 | Construction Complete | D-B-B |
| O-25-I | 2 | BACA | US 160 ML over DRAW; W of PRITCHETT | \$ - | 03/29/12 | 12/07/11 | Construction Complete | Modified D/B |
| K-16-S | 2 | FREMONT | SH 120 ML over DRAW, UP RR; E of FLORENCE | \$ 5,839,020 | 10/27/14 | 11/20/15 | In Construction | D-B-B |
| O-26-L | 2 | BACA | US 160 ML over CAT CREEK; W of SPRINGFIELD | \$ 3,957,457 | 03/29/12 | 12/07/11 | Construction Complete | Modified D/B |
| K-23-C | 2 | KIOWA | SH 96 ML over DRAW | \$ - | 08/18/10 | 09/21/11 | Construction Complete | D-B-B |
| H-16-K | 2 | TELLER | SH 67 ML over DRAW | \$ 2,616,199 | 08/04/10 | 12/31/10 | Construction Complete | D-B-B |
| L-24-F | 2 | BENT | SH 101 ML over PURGATOIRE RIVER; S of LAS ANIMAS | See M-24-B | 03/29/12 | (design) 10/31/12 | Construction Complete | Modified D/B |
| L-22-O | 2 | OTERO | SH 266 ML over HOLBROOK CANAL; NE of ROCKY FORD | \$ 8,368,926 | 08/20/12 | (design) 3/7/13 (const) | Construction Complete | CMGC |
| K-23-B | 2 | KIOWA | SH 96 ML over DRAW | \$ 2,283,354 | 08/18/10 | 09/21/11 | Construction Complete | D-B-B |
| O-19-H | 2 | LAS ANIMAS | US 350 ML over PURGATOIRE RIVER; NE of JCT US 160 | \$ 4,033,137 | 04/29/13 | 04/11/14 | Construction Complete | D-B-B |
| L-18-M | 2 | PUEBLO | I 25 ML NBND over INDIANA AVE | \$ 3,619,383 | 12/21/15 | 09/29/16 | In Design | D/B |

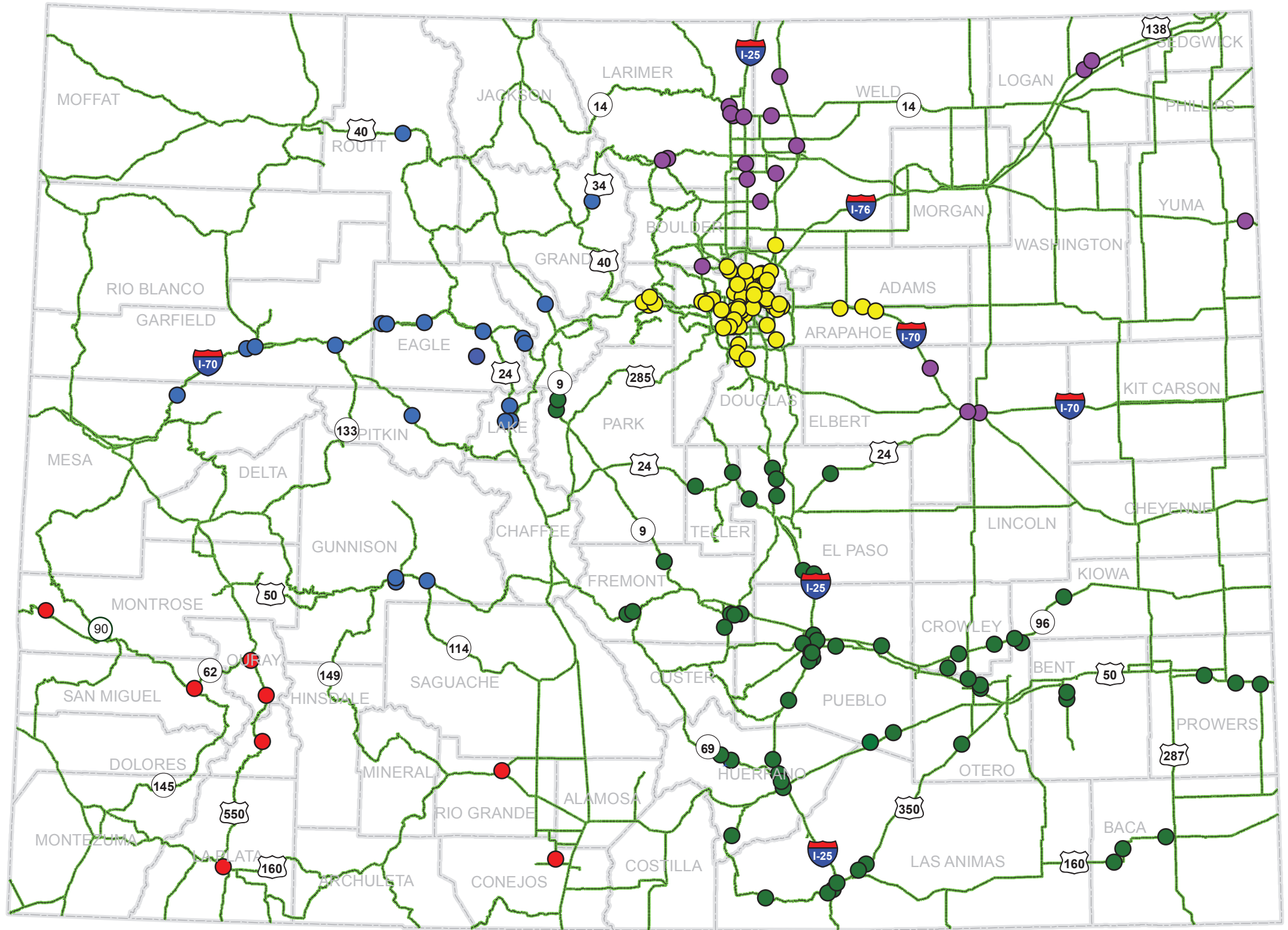
List of FASTER-Eligible Bridges Q3 - FY2015

| Original Bridge Number | Region | County | Facility Carried over Featured Intersection | Current Budget | Current Const. Start Date | Current Completion Date | Status | Project Delivery Method ¹ USE |
|------------------------|--------|------------|---|----------------|---------------------------|-------------------------|-----------------------|--|
| K-24-A | 2 | KIOWA | SH 96 ML over DRAW | \$ - | 08/18/10 | 09/21/11 | Construction Complete | D-B-B |
| G-12-C | 2 | PARK | SH 9 ML over PLATTE GULCH | \$ - | NP | NP | Not Programmed | Not Programmed |
| I-17-O | 2 | EL PASO | I 25 SERVICE RD over PINE CREEK; S of JCT SH 56 | \$ 168,126 | NoAct | NoAct | No Action Proposed | D-B-B |
| K-14-B | 2 | FREMONT | US 50 ML over OAK CREEK | \$ 500,000 | NP | NP | Not Programmed | D-B-B |
| K-14-J | 2 | FREMONT | US 50 ML over DRAW, between TEXAS CREEK & COTOPAXI | \$ 2,095,463 | 03/23/15 | 08/15/15 | Design Completed | D-B-B |
| K-17-F | 2 | PUEBLO | SH 96 ML over RUSH CREEK | \$ - | NP | NP | Not Programmed | Not Programmed |
| L-18-W | 2 | PUEBLO | I 25 ML SBND over INDIANA AVE | \$ 758,426 | 12/21/15 | 09/29/15 | In Design | D/B |
| L-19-F | 2 | PUEBLO | US 50 BUS. RT over DRAW | \$ - | NP | NP | Not Programmed | Not Programmed |
| L-19-G | 2 | PUEBLO | SH 96 ML over BOB CREEK CANAL | \$ - | NP | NP | Not Programmed | Not Programmed |
| L-22-K | 2 | OTERO | SH 71 ML over FT LYON CANAL; NW of ROCKY FORD | See L-22-O | 08/20/12 | NP (design) 3/7/13 | Construction Complete | CMGC |
| L-22-L | 2 | OTERO | SH 71 ML over ARKANSAS RIVER | \$ - | NP | NP | Not Programmed | Not Programmed |
| M-16-P | 2 | HUERFANO | SH 69 ML over MILLIGAN ARROYO; Near GARDNER | \$ 389,300 | N/A | N/A | In Design | D-B-B |
| N-17-BN | 2 | HUERFANO | I25 ML SBND over CO RD 640, BUTTE CREEK | \$ - | NP | NP | Not Programmed | Not Programmed |
| N-17-C | 2 | HUERFANO | I 25 BUS RT over SULL CREEK; Near WALSENBURG | \$ 2,866,513 | 02/17/14 | 09/03/14 | Construction Complete | D-B-B |
| N-17-S | 2 | HUERFANO | I25 ML NBND over CO RD 103, BUTTE CREEK | \$ - | NP | NP | Not Programmed | Not Programmed |
| O-19-J | 2 | LAS ANIMAS | US 350 ML over DRAW; S of MODEL | \$ 2,405,062 | 12/03/12 | 06/18/13 | Construction Complete | D-B-B |
| O-25-H | 2 | BACA | US 160 ML over N FK SAND ARROYO; SW of PRITCHETT | \$ - | 03/29/12 | 12/07/11 | Construction Complete | Modified D/B |
| P-19-AD | 2 | LAS ANIMAS | SH 239(CO RD 75) ML over IRRIGATION CANAL; in TRINIDAD | See O-19-J | 12/03/12 | 06/18/13 | Construction Complete | D-B-B |
| P-23-A_MINOR | 2 | LAS ANIMAS | US 160 ML over SMITH CANYON TRIBUTARY; Near KIM, CO | \$ 2,354,765 | 04/28/15 | 11/30/15 | Design Completed | D-B-B |
| J-09-G | 3 | GUNNISON | SH 114 ML over TOMICHI CREEK | \$ - | | | Construction Complete | D-B-B |
| H-09-B | 3 | PITKIN | SH 82 ML over CO RD, CASTLE CREEK | \$ 981,611 | 01/27/11 | 07/21/11 | Construction Complete | D-B-B |
| H-11-D | 3 | LAKE | US 24 ML over CALIFORNIA GULCH | \$ - | 7/26/2012 | 11/2/2012 | Construction Complete | CDOT replacement |
| H-11-F | 3 | LAKE | US 24 ML over CALIFORNIA GULCH | \$ - | 7/26/2012 | 11/2/2012 | Construction Complete | CDOT replacement |
| G-11-F | 3 | LAKE | US 24 ML over UP RR | \$ 6,891,828 | 12/30/10 | 11/09/11 | Construction Complete | D-B-B |
| F-09-H | 3 | EAGLE | US 6 ML over EAGLE RIVER; E of EAGLE | \$ 4,507,855 | 07/20/11 | 05/18/12 | Construction Complete | D-B-B |
| J-09-D | 3 | GUNNISON | US 50 SERVICE RD over GUNNISON RVR (SR); W. SIDE of GUNNISON | See J-09-C | 08/29/11 | 08/31/12 | Construction Complete | D-B-B |
| F-11-AC | 3 | EAGLE | I 70 ML EBND over US 6, RR, EAGLE RIVER; E of JCT SH 131 | \$ 14,423,855 | 07/19/14 | 06/03/16 | In Construction | D-B-B w/ A+B bid |
| F-11-AB | 3 | EAGLE | I 70 ML WBND over US 6, RR, EAGLE RIVER; E of JCT US 24 | See F-11-AC | 07/19/14 | 06/03/16 | In Construction | D-B-B w/ A+B bid |
| F-08-F | 3 | EAGLE | I 70 SERVICE RD over COLORADO RIVER (SR); N. of DOTSERO INT. | \$ 9,933,655 | 09/04/12 | 09/30/13 | Construction Complete | CMGC |
| J-09-C | 3 | GUNNISON | US 50 SERVICE RD over GUNNISON RVR OVERFLOW (SR); W. SIDE of GUNNISON | \$ 2,716,287 | 08/29/11 | 08/31/12 | Construction Complete | D-B-B |
| F-07-A | 3 | GARFIELD | SH 82 ML over I70 ML, COLORADO RVR,RR; GLENWOOD SPRINGS | \$ 115,689,758 | 01/01/16 | 12/31/17 | In Design | CMGC |
| C-09-C | 3 | ROUTT | US 40 ML over E FORK ELK RIVER; W of STEAMBOAT SPGS | \$ 5,635,097 | 02/28/13 | 11/19/13 | Construction Complete | D-B-B |
| D-13-A | 3 | GRAND | US 34 ML over N FK COLORADO RIVER | \$ - | NP | NP | Not Programmed | Not Programmed |
| E-12-I | 3 | SUMMIT | SH 9 ML over BLUE RIVER | \$ - | NoAct | NoAct | No Action Proposed | Not Programmed |
| F-05-C | 3 | GARFIELD | SH 13 ML over RIFLE CREEK | \$ - | NoAct | NoAct | No Action Proposed | Not Programmed |
| F-05-L | 3 | GARFIELD | I 70 ML WBND over COLORADO RIVER | \$ - | NP | NP | Not Programmed | D-B-B w/ A+B bid |
| F-08-D | 3 | EAGLE | I 70 ML over UP RR (SR) | \$ - | NP | NP | Not Programmed | Not Programmed |
| F-10-C | 3 | EAGLE | US 6 ML over EAST LAKE CREEK | \$ - | NP | NP | Not Programmed | Not Programmed |

List of FASTER-Eligible Bridges Q3 - FY2015

| Original Bridge Number | Region | County | Facility Carried over Featured Intersection | Current Budget | Current Const. Start Date | Current Completion Date | Status | Project Delivery Method1USE |
|------------------------|--------|-------------------|--|----------------|---------------------------|-------------------------|-----------------------|-----------------------------|
| F-10-L | 3 | EAGLE | I 70 ML EBND over US 6, RR, EAGLE RIVER | \$ - | NP | NP | Not Programmed | D-B-B w/ A+B bid |
| F-11-AO | 3 | EAGLE | I 70 ML EBND over TIMBER CREEK | \$ - | NoAct | NoAct | No Action Proposed | Not Programmed |
| G-03-Q | 3 | MESA | I 70 ML WBND over COLORADO RIVER OVERFLOW | \$ - | NP | NP | Not Programmed | D-B-B w/ A+B bid |
| C-15-J | 4 | LARIMER | US 34 ML over BIG THOMPSON RIVER | \$ - | 08/17/09 | 06/30/10 | Construction Complete | D-B-B |
| C-15-I | 4 | LARIMER | US 34 ML over BIG THOMPSON RIVER | \$ 5,362,816 | 08/17/09 | 06/30/10 | Construction Complete | D-B-B |
| C-17-EL | 4 | LARIMER | I 25 ML over DRAW | \$ 1,078,230 | 02/07/12 | NoAct | No Action Proposed | Not Programmed |
| A-24-C A-26-F | 4 | LOGAN SEDGWICK | US 138 ML over DITCH/DRAW | \$ 869,367 | 10/01/10 | 12/15/10 | Construction Complete | D-B-B |
| D-17-AK | 4 | WELD | SH 66 ML over ST VRAIN RIVER; W of PLATTEVILLE | \$ 6,000,266 | 11/05/12 | 06/18/14 | Construction Complete | D-B-B |
| G-22-J | 4 | LINCOLN | US 24 ML over DRAW; E of LIMON | \$ 1,044,720 | 05/02/11 | 08/24/11 | Construction Complete | D-B-B |
| C-18-BK | 4 | WELD | US 85 BYPASS SBND over US 85 BUS RT | \$ - | NoAct | NoAct | No Action Proposed | Not Programmed |
| B-16-D | 4 | LARIMER | SH 14 ML over CACHE LA POUDDRE RIVER; E of JCT US 287 | \$ 15,235,491 | 09/12/14 | 11/20/15 | In Construction | D-B-B |
| C-17-BN | 4 | WELD | I 25 SERVICE RD over LITTLE THOMPSON RIVER; S of JCT SH 56 | \$ 2,723,890 | 09/04/12 | 04/12/13 | Construction Complete | D/B |
| B-16-AE | 4 | LARIMER | US 287 ML over DRAW; N of JCT SH 1 | \$ 3,964,645 | 07/25/11 | 05/01/12 | Construction Complete | D-B-B |
| G-21-B | 4 | ELBERT | I 70 FRONTAGE RD over DRAW (SR) | \$ 1,361,415 | 01/28/13 | 05/23/13 | Construction Complete | D-B-B |
| E-15-AA | 4 | BOULDER | SH 170 ML over COMMUNITY DITCH AR | \$ - | NoAct | NoAct | No Action Proposed | Not Programmed |
| G-21-Y | 4 | ELBERT | I 70 BUSINESS SPUR over I 70 ML | \$ 200,000 | NoAct | NoAct | No Action Proposed | Not Programmed |
| B-16-AM | 4 | LARIMER | PROSPECT ROAD over I 25 ML | \$ - | NP | NP | Not Programmed | Not Programmed |
| B-16-EU | 4 | LARIMER | COUNTY ROAD 48 over I 25 ML | \$ - | NP | NP | Not Programmed | Not Programmed |
| B-17-C | 4 | WELD | US 85 ML(NUNN BRIDGE) over UPRR | \$ 7,652,645 | 03/17/13 | 06/13/14 | Construction Complete | D-B-B |
| B-17-L | 4 | WELD | SH 14 ML over COALBANK CREEK; W of AULT | \$ 5,712,268 | 02/01/13 | 04/14/15 | Construction Complete | D-B-B |
| C-17-B | 4 | WELD | SH 60 ML over SOUTH PLATTE RIVER | \$ - | NP | NP | Not Programmed | Not Programmed |
| D-19-A | 4 | WELD | I 76 SERVICE RD over LOST CREEK SR | \$ - | NoAct | NoAct | No Action Proposed | Not Programmed |
| D-28-B | 4 | YUMA | US 34 ML over N FK REPUBLICAN RIVER; W of LAIRD | \$ 3,474,546 | 06/25/12 | 12/14/12 | Construction Complete | D-B-B |
| M-06-K | 5 | SAN JUAN | US 550 ML over MINERAL CREEK | \$ 3,651,884 | 08/17/09 | 06/01/11 | Construction Complete | D-B-B |
| L-06-A | 5 | OURAY | US 550 ML over BEAR CREEK | \$ 5,850,074 | 07/26/10 | 10/24/11 | Construction Complete | D-B-B |
| O-05-AQ | 5 | LA PLATA | US 160 ML over ANIMAS RIVER | \$ 806,013 | 07/26/10 | 11/23/10 | Construction Complete | D-B-B |
| L-04-B | 5 | SAN MIGUEL | SH 145 ML over LEOPARD CREEK; JCT SH 62 - PLACERVILLE | \$ 3,855,354 | 05/15/12 | 05/30/13 | Construction Complete | D-B-B |
| L-05-B | 5 | OURAY | SH 62 ML over UNCOMPAGHRE RIVER; SHERMAN ST in RIDGWAY | \$ 7,804,596 | 04/24/12 | 05/30/13 | Construction Complete | D-B-B |

Colorado State Map of FASTER Eligible Bridges



Legend

Deficient Bridges

REGION

- 1 (yellow dot)
- 2 (dark green dot)
- 3 (blue dot)
- 4 (purple dot)
- 5 (red dot)

— HIGHWAYS

— COUNTIES

183 Faster Eligible Bridges