



COLORADO

Department of Transportation

Statewide Bridge Enterprise

Colorado Bridge Enterprise

Quarterly Report No. 15 (Q2 FY2015)

April 17, 2015

Introduction

This report is the fifteenth Quarterly Report (Report) published in support of the Colorado Bridge Enterprise (CBE or “Program”). This Report outlines progress and accomplishments associated with the Program for work completed during October, November and December of 2014; which coincides with the second quarter of CDOT’s 2015 fiscal year (or Q2 FY2015). Detailed information regarding the FASTER (Funding Advancement for Surface Transportation and Economic Recovery) legislation, program development activities, bond program, previous significant milestones and achievements can be found in the Program Annual Reports and previous Quarterly Reports viewable on CDOT website at www.coloradodot.info/programs/BridgeEnterprise.

During Q2 FY2015, the Program primarily focused on the delivery and close out of bridge projects partially or fully funded by the \$300M bond program. The following is an itemization of significant achievements, some of which are discussed in further detail later in the report:

- Drafted the fourteenth Bridge Enterprise Quarterly Report for Q1 FY2015 (July, August and September of 2014).
- Distributed Bridge Enterprise 2014 Annual Report draft to Board members at the December meeting. The final report will be posted to CDOTs website by January 15, 2015 in accordance with FASTER legislation.
- Completed monthly updates to the overall Program Schedule for work completed in September, October and December of 2014. Also presented updates at the ACEC quarterly meeting.
- Bond Allocation Plan updated through Q1 FY2015 (September 2014).
- Approval and adoption of the FY2015 Bridge Enterprise third, fourth and fifth Budget Supplements.
- Updated program status for various program metrics including Major Achievements, Total Program Financial Performance, Status of FASTER Eligible Bridges, Status of \$300M Bond Bridges, Status of 30 Most Deficient Bridges, and Un-Programmed Priority Bridge Enterprise Bridges.
- Provided the Schedule Change Control Board with revisions to Bridge Enterprise Guidance Document regarding changes to the Baseline Schedule Change process.
- Approval, adoption and posting of Guidance Document #7, Revision 1.
- Implementation of Guidance Document #7, Revision 1 to the Bridge Enterprise Program Schedule.
- Executed Q2 FY2015 Maintenance Invoice.
- Issued to CDOT senior staff a recommended list of structures to program (fund) through the pre-construction phase only.

Program Highlights

There are currently ninety-three bridges that are partially or fully funded to be completed as part of the \$300M bond program. Eighty-four percent of the bond funded bridge projects can be classified as

complete, in construction or are waiting to go to construction (78 in total); as compared to the number of bridges in the pre-construction, design or project startup phase (15 in total).

Projects in the preconstruction phase are primarily focused on the completion of the PS&E's (Plans, Specifications and Estimates). In conjunction with this, CDOT specialty groups are diligently working on completing the requisite approvals and permits associated with environmental, railroad, and utility clearances or relocations; securing the necessary Right-of-Way (ROW); and finalizing intergovernmental agreements (as required), etc. Per the current program schedule, construction work is projected to taper-off during calendar year 2015 into calendar year 2016.

As of the end of December 2014, there were a total of one-hundred-eighty-three (183) bridges considered eligible to receive FASTER funding. The progress status associated with these 183 structures is itemized in Table 1 below.

Table 1. Project Status as of Q2 FY2015

Project Phase	Number of Bridges
Future Projects	24
In Design/Design Completed	18
In Construction	19
Projects Completed (1)	106
No Action Proposed	16
Total (2) (3)	183

- (1) Reference Appendix A for List of Completed Bridges
- (2) Reference Appendix B for complete List of FASTER eligible bridges
- (3) Reference Appendix C for Colorado State map of FASTER eligible bridges

Other relevant bridge and financial statistics are as follows:

- Approximately 68% of FASTER eligible bridges (19+106) are now in construction or completed.
- Approximately 10% of FASTER eligible bridges (18) are currently in design or design is completed.
- 22% of FASTER eligible bridges remain to be programmed (24 plus 16).
- Additionally, \$293.1M and \$13.3M respectively of bond program funds have been expended or encumbered to date (reference Table 7).

The program schedule progress and performance information presented in Table 2 shows the value of the work complete through Q2 FY2015 as compared to what had been planned to be completed per the baseline schedule. The earned value of work complete to date was \$459.5M as compared to the planned value of the work scheduled to be completed at \$498.4M; which indicates that the program was approximately 9% behind the plan.

Note - Earned Value at the lowest level is attained by multiplying the percent complete of a project activity by its respective budget. Earned value is rolled-up from the project level to the region level, and then again rolled-up from the region level to the program level.

Table 2. Q2 FY2015 Earned Value by CDOT Region and Program (\$K)

CDOT Region	Planned Value of Work through Dec. 31, 2014	Earned Value of Work through Dec. 31, 2014 st	Schedule Variance
1	329,742	301,612	(28,129)
2	69,628	65,039	(4,589)
3	49,703	44,619	(5,084)
4	37,722	36,537	(1,184)
5	11,690	11,690	0
Total	498,485	459,498	(38,987)

The Program utilizes cost and schedule Key Performance Indicators (or KPIs) to track, monitor and report on program performance. As part of the monthly schedule update, a Schedule Performance Index (SPI) is calculated for each project included within the bond program. The SPI is also calculated and reported at the regional and program levels. The SPI is based upon earned value which compares actual progress to planned performance based upon work complete to date. The program SPI for work complete through December 2014 was 0.92; an increased value of 0.03 from the previous quarterly report (September 2014, SPI at 0.89). The program has established an SPI goal during execution of greater than or equal to 0.90. This increase in the SPI is primarily due to the implementation of Guidance Document #7 Rev. #1 (see SCCB discussion on page 5).

Program Activities and Accomplishments in Q2 FY2015

The Program's main activities and significant accomplishments are briefly described below.

FASTER eligible bridges

There were three newly eligible structures added during the period as itemized in Table 3 below.

Table 3. Projects / Bridges Added to the FASTER Program

Region	Original Bridge Number	County	Facility Carried over Featured Intersection
2	L-19-F	PUEBLO	US 50 BUS. RT over DRAW
3	F-10-C	EAGLE	US 6 ML over EAST LAKE CREEK
5	K-01-C	MONTROSE	SH 90 ML over DOLORES RIVER

Pre-Construction Phase

There were no projects which began the pre-construction phase during this period.

Projects that went to AD (Advertisement for Construction)

There were two projects that went to AD during the period as itemized in Table 4 below.

Table 4. Projects / Bridges that went to AD

Region	Original Bridge Number	County	Facility Carried over Featured Intersection
1	E-17-JP	DENVER	I 70 ML over HAVANA ST, UP RR
1	E-16-AA	ADAMS	US 287 ML over BNSF RR SPUR; at 69TH AVE

Projects that went to Construction

There was one project that went to construction during the period as itemized in Table 5 below.

Table 5. Projects / Bridges that went to Construction

Region	Original Bridge Number	County	Facility Carried over Featured Intersection
2	K-16-S	FREMONT	SH 120 ML over DRAW, UP RR; E of FLORENCE

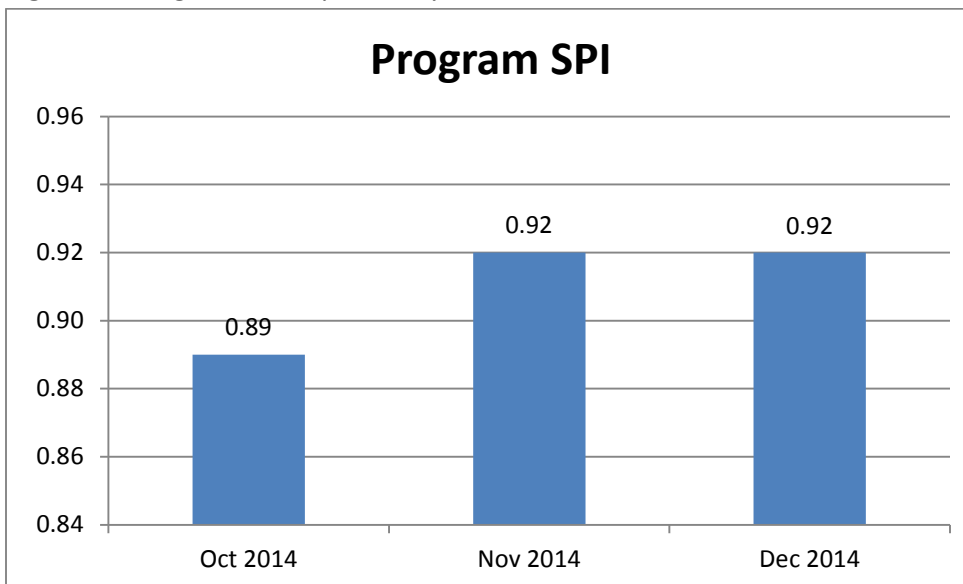
Completed Projects

There were no projects completed during this period.

Program Schedule Update

The program schedule was updated three times during the period for work complete in October, November and December of 2014. This includes publishing the monthly updated program bar-chart schedule, cost and schedule database, and list of projects with an SPI < 0.90. This information was consolidated and distributed to the Regional Transportation Director’s (or RTD’s) and their respective program engineers. The SPI’s reported for each month during the quarter are graphically depicted in Figure 1 below.

Figure 1. Program SPI Reported by Month



Schedule Change Control Board

The Schedule Change Control Board (SCCB) conducts monthly meetings that are attended by senior CDOT HQ staff, regional transportation directors and program engineers. The purpose of the SCCB meetings was two-fold: (1) document and review projects with an SPI < 0.90, and (2) allow the RTD's (or their designated delegate) an opportunity to petition the SCCB to make adjustments to a project's baseline schedule when the schedule logic does not reflect current project delivery and is artificially impacting the SPI calculation. Formal meeting minutes were published with a list of attendees and an itemized list of SCCB approved changes; subject changes were incorporated into the program schedule in the subsequent schedule update.

Note - the SCCB policy is not intended to provide relief to poorly performing projects. Guidance Document #7 Rev. #1 allows a project schedule to be re-baselined when a project transitions from design to construction phases.

Major Project/Program Strategic Planning and Coordination

The Bridge Enterprise staff continues to work intimately with various CDOT project teams on coordination, funding eligibility, and strategic planning issues associated with the following large projects:

- Region 1:
 - Colfax over Tollgate Creek; Arapahoe Road over Cherry Creek: Bridge Enterprise staff continues to actively provide ongoing support for these projects.
 - I-70 over Havana Street: Attended EOC and ACC review meetings. Coordinated with Region 1 and provided Bridge Enterprise guidance on project ACCs.
 - US 287/69th bridge: Bridge Enterprise staff attended coordination meeting to discuss FHWA requirements.
 - US 6th Avenue bridge/road improvement: Bridge Enterprise has three replacement bridges in the project; 6th Ave over BNSF, So. Platte River and Bryant Street. Program staff attended meetings for project team coordination.
 - I-70 Viaduct: Program staff met with region/project team and the CDOT region staff regarding financial and eligibility decision impacts with the Bridge Enterprise program. Also attended several meetings, including discussion of financial services contract scope, budget, bonding and financial forecasting.
 - I-70 business route over I-70 ML east of Idaho Springs: Program staff drafted the Final Eligibility Review for this replacement/PPSL project.
 - I-70 ML WB over US 6: Bridge Enterprise Staff attended meetings with FHWA, OMPD and Region 1 staff. Also coordinated with OMPD regarding future budget needs.
- Region 2:
 - Ilex Design/Build Bridge Replacement/Rehabilitation project: Bridge Enterprise staff provided support regarding the over budget proposals received from all shortlisted team on the Ilex D/B project. Bridge Enterprise staff consulted region staff on

preferred scope changes on “rehab” bridges to facilitate potential scope reduction and path forward efforts.

- Region 3:
 - SH 82 Grand Ave Bridge in Glenwood Springs:
 - Continue work with program engineer to track and forecast the estimated total project costs.
 - Attended meetings and/or conference calls regarding the status of right-of-way and utility issues, project leadership team coordination issues, and project public involvement issues.
 - Bridge Enterprise staff provided guidance to the project management and design team on the avoidance of undesirable contractual risk elements.
 - Bridge Enterprise financial staff provided guidance to the region regarding the financial constraints to which the project must adhere.
 - Provided guidance and support to project team and region on the procurement of additional outside sources of funding.
 - Provided guidance and support to the project team in regard to the compiling and requirements of publishing a financial plan as required by the FHWA.
 - I-70 over US6, UPRR & Eagle River: Bridge Enterprise team continues to actively provide ongoing support to this project.
- Region 5:
 - SH90 over Dolores River: Coordinated with Region 5 staff on programming and budget for this bridge replacement project.

I-70 Viaduct Project

BE staff is proceeding with the proposed contribution of \$850M for the I-70 Viaduct replacement project in regard to analyzing and determining financial feasibility, impacts, and forecasts to the Bridge Enterprise program. Once the funding scenario for the I-70 Viaduct replacement project is finalized and determined, Bridge Enterprise will be able to update long-term planning forecast documents. Work performed during the quarter consisted of finalizing the core funding model scenarios as well as developing multiple variations of the core models to assist in evaluation of the optimum model. The result of the analysis was condensed into a presentation to a joint workshop session of the HPTE and Bridge Enterprise Board of Directors. Additional work included building the associated graphs and tables that would be used in the presentation of the optimum model. Support was given to OFMB and OMPD staff in regard to developing the presentation to the Transportation Commission and Bridge Enterprise Board of Directors on the desired scope of the project. The Transportation Commission and Bridge Enterprise Board have determined that the desired scope of the I-70 Viaduct Project should extend to I-225 and not just include the Bridge Enterprise eligible portion of replacement of the Viaduct structure.

FASTER Process Audit

The Office of the State Auditor (OSA) initiated a Bridge Enterprise Process Audit in summer of 2014, which examines standard procedures and processes within the FASTER legislation. The audit is

scheduled to conclude June 30, 2015. CDOT staff and the Bridge Enterprise team continue to conduct research and reporting tasks as requested by the OSA.

Bond Spending

Including net bond proceeds and interest earnings on the bond proceeds, the actual spend down was at 95.1% on December 31, 2014. The Bridge Enterprise team is continuing its efforts to assure 100% spend down of the bonds by: Transferring Bond budget from substantially complete and slow spending projects to projects that could spend the budget faster; and by the Bridge Enterprise Accountant billing the Trustee weekly rather than monthly to speed up the reimbursement process.

Monthly / Quarterly Program Reports

Q1 FY2015 Quarterly Report: Bridge Enterprise completed the quarterly report highlighting program progress for work complete in July, August and September of 2014, which coincides with CDOT's first quarter of fiscal year 2015 (or Q1 FY2015).

Q1 FY2015 Quarterly Bond Program Update: The \$300M bond program allocation plan was updated for work complete through September 2014 (Q1 FY2015). The Q1 FY2015 bond program update was presented at the October Bridge Enterprise Board meeting.

Monthly Bond Program Update: Program staff completes a monthly bond update rather than quarterly updates through year end. An update was performed for work complete through December 31, 2014.

FASTER Job Creation

FHWA tracks the economic benefits of highway capital investments (which include bridge replacement projects), and from a job creation perspective employment impacts fall into three categories as listed below:

- Direct jobs are occupations that work directly on the project such as project planners, designers, engineers and construction workers.
- Indirect jobs means positions at suppliers of materials for the project, such as steel, concrete, wood, etc.
- Induced jobs are jobs created by the spending of monies provided as project salaries [or employee payroll] for items such as mortgage payments, groceries, gas, entertainment, etc.

The most recent official estimate of the impacts of infrastructure investment on employment was generated by Council of Economic Advisers (CEA) within the Executive Office of the President. In a 2014 DOT statement, the CEA estimated that every \$1 billion in Federal highway and transit investment funded by the American Jobs Act would support 13,000 jobs for one year. For the program, this correlates to approximately 4,203 full-time positions, primarily construction craft labor. In addition, preconstruction program expenditures (i.e., engineering and project designs) created another approximately 1,483 full-time positions; primarily engineers. Combined, there were approximately 5,686 direct jobs created by FASTER program spending to date. Included in the above number are approximately 33 CDOT FTE's (full-time equivalents) for this quarter; staff responsible for the day-to-day delivery of the program based upon CDOT payroll records.

Resolutions Approved by the Statewide Bridge Enterprise Board

The following is a brief overview of resolutions passed by the Statewide Bridge Enterprise Board of Directors or significant topics discussed during Q2 FY2015 as itemized in Table 6 below.

Table 6. Board Resolution / Significant Topics:

October Board of Directors Meeting (No workshop)
<ul style="list-style-type: none"> ▪ Adoption of 3rd Budget Supplement for FY2015 ▪ Monthly Progress Report
November Board of Directors Meeting (HPTE-TC-BE I-70 Update)
<ul style="list-style-type: none"> ▪ Adoption of 4th Budget Supplement for FY2015 ▪ Monthly Progress Report
December Board of Directors Meeting (I-70 Workshop)
<ul style="list-style-type: none"> ▪ Adoption of 5th Budget Supplement for FY2015 ▪ Discuss Completion of the 2014 Annual Report ▪ Monthly Progress Report

Other Significant Achievements

- Program staff and CDOT Financial and Accounting team continue to track bond expenditures as compared to forecasted bond spending and identify factors impacting bond spending. The program is working to confirm project schedules and budgets to help satisfy bond spending.
- Program staff worked with Bridge Enterprise accountants on Q2 FY2015 Bridge Enterprise maintenance invoice.
- CBE financial manager continues to work with CDOT admin staff on de-pro with completed phases and actively re-programming the surplus dollars back into the program via new work scope or used to cover increases to planned budgets.
- Continuing effort to track and report on actual expenditures compared with forecasted spending.
- Continue to support CDOT’s Public Relations and Government Relations with ongoing updates to the CDOT/Bridge Enterprise website and monthly “dash-board” performance metric updates.
- Provide support to OFMB and program accounting staff in development of budget supplements from regions, which are presented at the monthly Board of Directors meetings.
- Continuing attendance in Leading/Lagging Performance meetings.
- Ongoing attendance at State Auditor’s Office meetings and provide support to FASTER Process Audit activities.
- Support of I-70 Viaduct project development through attendance of multiple coordination meetings, including the Bridge Enterprise Project Issues meetings.
- Provide ongoing updates to Program financial forecasting. For this period, updates included I-70 Viaduct contributions and impacts.
- Bridge Enterprise submitted a program synopsis and was selected to present at ACEC of Arizona’s 2015 Conference on Roads and Streets in April 2015.

- Continuance of bi-weekly internal meetings to coordinate upcoming deliverables and ongoing initiatives.
- Perform ongoing updates to the program schedule, bar-chart schedule, and list of projects with SPI<0.90, and distribute to CDOT regional RTD's and program engineers.
- Collaborated and provided graphical presentation materials to CDOT staff, OMPD and HPTE for workshop presentation and discussion of I-70 Viaduct optimum core funding model scenarios.
- Assisted OFMB and OMPD staff in preparation of Bridge Enterprise Board presentation regarding I-70 Viaduct desired project scope.
- Program staff attends and participates in monthly Schedule Change Control Board and Chief Engineer/RTD meetings.
- Provide monthly briefings to CDOT executive staff regarding Bridge Enterprise Board agenda items.
- Attend PMO Update and Schedule Policy Coordination meetings, Transportation Commission meetings and workshops.
- Attended several multi-agency meetings and coordinated with CDOT staff on development of BEPM 100-year Bridge Design Life recommendations.
- Bridge Enterprise staff assisted the CDOT Government Relations Office in reviewing and editing reports for the State Legislature Joint Budget Committee.
- Attended a debriefing regarding the Bridge Enterprise Bridge Innovation R&D Study progress.

Financial Information

The following is a program overview of financial statistics as of December 31, 2014.

- The program has multiple funding sources including: proceeds from the Build America Bond program, FASTER bridge dollars which is commonly referred to as the statewide pay-go program (collected yearly revenues from vehicle registrations), Bank of America Loan, and Other Funds which are primarily Federal-aid BR funding.
- From program inception (life-to-date), a total of \$734.4M has been budgeted (all funding sources), and Expenditures and Encumbrances are \$449.8M and \$136.0M (all funding sources), respectively. Reference Table 7 below for details by funding source.
- For comparison purposes, the totals from the previous quarterly report (Q1 FY2015) are also reported in the far right column.
- There is currently \$308.2M of bond proceeds and interest earnings available, with \$306.3M budgeted. Actual expenditures were \$293.1M with an encumbrance balance of \$13.3M.

Table 7. Program Financial Statistics as of (\$ in Millions)

	Build America Bonds 2010 A Proceeds	FASTER Bridge	Bank of America Loan	Other Funds	Total Q2 FY2015	Total Q1 FY2015
Budget	\$306.3	\$355.8	\$40.3	\$32.0	\$734.4	\$704.7
Expenditures	\$293.1	\$89.7	\$39.0	28.0	\$449.8	\$420.8
Encumbrances	\$13.3	\$119.7	\$0.3	\$0.3	\$136.0	\$177.6

The Bridge Enterprise program currently consists of one-hundred-ten bridges, including ninety-three (93) bridges from the Bond program; fifty-six (56) of these bridges are fully funded, and thirty-seven (37) of these bridges are partially funded with current available sources. The currently programmed amount for these one-hundred-ten bridges is approximately \$910.0M. Table 8 below provides an itemization of current funding sources for the Bridge Enterprise program.

Table 8. Current Allocation Plan (\$ in Millions)

Build America Bonds	FASTER Bridge	Other Funds	Bond Interest	Total
\$298.1	\$529.6	\$72.2	\$10.1	\$910.0

Economic Outlook

The following are highlights from project bid data results maintained by CDOT’s Engineering Estimates and Market Analysis (EEMA) group for transportation related projects advertised during the period.

- There were on average 3.35 bidders per project during the period. This is an increase from 3.00 bidders per project from the previous quarter. An average of 4.44 bidders was reported in the final quarter of 2013.
- On average, the low bid on twenty-eight transportation related projects bid during the reporting period was higher than the engineer’s estimate by approximately 1%.
- There was one FASTER project bid during the period, and the low bid was approximately 7% lower than the engineer’s estimate.

The following economic statistics were reported by the Chief Economist from the Associated General Contractors (AGC) of America as reported by AGC’s Data DIGest or Press Releases during the quarter. The data provides insight on economic movement associated with the Producer Price Index, Construction Employment and other economic indicators (both state and national) month-to month or year-over-year (e.g., December 2013 to December 2014).

Producer Price Index

The Producer Price Index (PPI) for inputs to construction – a weighted average of the cost of all materials used in construction plus items consumed by contractors such as diesel fuel – dipped 1.4% in December; and decreased 0.9% over the past year (December 2013 to December 2014), the first full-year decline since 2001 (Vol. 15, No. 3 Data DIGest).

Construction Employment

- Construction firms added jobs in 40 states between December 2013 to December 2014; ten states lost construction jobs for the year. Construction employment remained the same in two states year to year. (AGC 1/27/2015 Press Release).
- Construction employment expanded in 257 out of 339 metropolitan areas, declined in 43 and was unchanged in 39 between December 2013 and December 2014. (AGC 2/4/2015 Press Release).

Other

- Construction spending rose in December to a six-year high of \$982 billion at a seasonally adjusted annual rate, down 0.4% higher than November and 2.2% higher than in December 2013. (AGC 2/2/2015 press release).
- Colorado was ranked twelfth best in the country in the percent of new construction jobs [9,700] gained at 7.5% year-over-year (December 2013 to December 2014) as reported by the AGC from the Bureau of Labor Statistics and U.S. Department of Labor.
- The Denver-Aurora-Broomfield, CO metropolitan area was ranked 89th out of 339 metropolitan areas in the percent of new construction jobs gained (6,800) at 8% year-over-year (December 2013 to December 2014).
- The National Highway Construction Cost Index (NHCCI) is a measure of the average change over time in the prices paid by state transportation departments for roadway construction materials and services. The index increased 1.2% from September 2013 to September 2014 (FHWA website). December comparisons were not available at the time of this report.

Associated General Contractors of America (AGC) officials said the construction industry should continue to expand in 2015, noting that eighty percent of contractors report plans to add new employees this year. The construction employment gains come as more contractors report having a hard time finding enough qualified workers to fill available positions. They urged Congress to act quickly to reform and increase funding for the Perkins Act, which funds most career and technical education programs in the country (AGC 2/15/15 and 1/9/15 press releases).

The infrastructure funding outlined in the president's latest budget is expected to help stimulate needed debate on the best way to finance repairs and additions to the nation's vital public infrastructure. "The president's budget proposal opens the door to a healthy debate about the best way to finance our long-term infrastructure needs," said Stephen E. Sandherr, the association's chief executive officer (2/2/15 AGC press release).

**Current List of Completed Bridges
Q2 - FY2015**

Original Bridge Number	New Bridge Number	Region	County	Facility Carried over Featured Intersection	Status
E-16-FP	E-16-YF	1	ADAMS	80TH AVE over US 36 ML	Construction Complete
E-16-GQ	E-16-YD	1	ADAMS	SH 95 ML (SHERIDAN BLVD) over UP RR, RR SPUR; N of JCT I 76 in WHEATRIDGE	Construction Complete
E-17-AR	E-17-ADR	1	ADAMS	SH 7 ML over SOUTH PLATTE RIVER	Construction Complete
E-17-DM	E-17-ADL	1	ADAMS	I 76 ML WBND over UP RR	Construction Complete
E-17-DN	E-17-ADL	1	ADAMS	I 76 ML EBND over UP RR	Construction Complete
E-17-EX	E-17-GF	1	ADAMS	PEORIA STREET over I 76 ML; NE of JCT US 85	Construction Complete
E-17-EZ	E-17-ACR	1	ADAMS	84TH AVE over I 25 ML	Construction Complete
E-17-GL	E-17-AET	1	ADAMS	I 76 ML WBND over SOUTH PLATTE RIVER; NE of JCT I 270	Construction Complete
E-17-GM	E-17-AET	1	ADAMS	I 76 ML EBND over SOUTH PLATTE RIVER; NE of JCT I 270	Construction Complete
E-17-HG	E-17-ADP	1	ADAMS	104TH AVE over I 25 ML	Construction Complete
E-17-HL	E-17-AEA	1	ADAMS	I 76 ML EBND over SH 224 ML	Construction Complete
F-16-F	F-16-FA	1	ARAPAHOE	US 85(SANTA FE) ML NBND over DAD CLARK GULCH; in LITTLETON	Construction Complete
F-16-FY	F-16-YG	1	ARAPAHOE	US 285 ML SBND over SH 88 ML	Construction Complete
F-16-FZ	F-16-YH	1	ARAPAHOE	US 285 ML NBND over SH 88 ML	Construction Complete
F-19-B	F-19-BL	1	ARAPAHOE	US 36 ML over COMANCHE CREEK; E of STRASBURG	Construction Complete
E-16-FK	E-16-YB	1	BROOMFIELD	SH 121 ML SBND- WADSWORTH PKWY over US 36 ML (DENVER/BOULDER TNPK)	Construction Complete
E-16-FL	E-16-YC	1	BROOMFIELD	CNTY RD / OLD WADS over US 36 ML (DENVER/BOULDER TNPK); SE of JCT SH 121	Construction Complete
F-14-B	F-14-AZ	1	CLEAR CREEK	I 70 FRONTAGE RD over CLEAR CREEK (SR); W IDAHO SPRINGS	Construction Complete
E-16-FW	E-16-YQ E-16-YZ(ped bridge)	1	DENVER	PECOS STREET over I 70 ML; in DENVER	Construction Complete
E-17-BY	E-17-AER	1	DENVER	I 70 ML EBND over SAND CREEK; E of QUEBEC ST	Construction Complete
E-17-GE	E-17-AER	1	DENVER	I 70 ML WBND over SAND CREEK; E of QUEBEC ST	Construction Complete
F-16-BM	F-16-XK	1	DENVER	SH 88 ML over RR, LAKEWOOD GULCH	Construction Complete
F-16-DP	F-16-XB	1	DENVER	I 25 ML over RDWY,RR, SOUTH PLATTE RVR; BRONCO BRIDGE	Construction Complete
F-16-DT	F-16-XS	1	DENVER	I 25 ML NBND over US 85 ML (SANTA FE)	Construction Complete

**Current List of Completed Bridges
Q2 - FY2015**

Original Bridge Number	New Bridge Number	Region	County	Facility Carried over Featured Intersection	Status
F-16-DW	F-16-XS	1	DENVER	I 25 ML SBND over US 85 ML (SANTA FE)	Construction Complete
F-16-FW	F-16-YQ	1	DENVER	US 287+SH 88 (FEDERAL) over US 40 ML (COLFAX)	Construction Complete
F-16-OG	Rehab, no new number	1	DENVER	RAMP to I 25 NBND over US 6 ML	Construction Complete
F-17-AE	F-17-WP	1	DENVER	SH 30 ML/HAVANA ST over CHERRY CREEK	Construction Complete
G-16-B	G-16-E	1	DOUGLAS	US 85 ML over DRAW; COOK RANCH to LOUVIERS	Construction Complete
G-16-C	G-16-F	1	DOUGLAS	US 85 ML over DRAW; COOK RANCH to LOUVIERS	Construction Complete
E-16-FX	E-16-XR	1	JEFFERSON	WASHINGTON STREET over SH 58 ML	Construction Complete
E-16-HA	E-16-HG	1	JEFFERSON	SH 58 ML over FORD STREET, WASH	Construction Complete
E-16-HI	E-16-XQ	1	JEFFERSON	SH 58 ML over CO.RD,RR SPUR	Construction Complete
F-16-AM	F-16-WI	1	JEFFERSON	US 285 ML SBND over SH 121 ML	Construction Complete
F-16-AY	F-16-WI	1	JEFFERSON	US 285 ML NBND over SH 121 ML	Construction Complete
F-16-CS	F-16-YR	1	JEFFERSON	SH121 ML-WADSWORTH over BEAR CREEK; N OF 285	Construction Complete
F-16-FL	F-16-XQ	1	JEFFERSON	US 6 ML over SH 95 ML/SHERIDAN AVE.	Construction Complete
F-16-I	F-16-YK	1	JEFFERSON	US 285 ML SBND over PIERCE STREET	Construction Complete
O-25-H	O-25-AA	2	BACA	US 160 ML over N FK SAND ARROYO; SW of PRITCHETT	Construction Complete
O-25-I	O-25-AB	2	BACA	US 160 ML over DRAW; W of PRITCHETT	Construction Complete
O-26-L	160C461737BR 160C461739BR	2	BACA	US 160 ML over CAT CREEK; W of SPRINGFIELD	Construction Complete
L-24-F	Rehab, no new number	2	BENT	SH 101 ML over PURGATOIRE RIVER; S of LAS ANIMAS	Construction Complete
M-24-B	M-24-K	2	BENT	SH 101 ML over DRAW; S of LAS ANIMAS and JCT US 50	Construction Complete
L-21-U	096B103590BL	2	CROWLEY	SH 96 ML over NUMA DRAIN CANAL	Construction Complete
L-22-F	L-22-CJ	2	CROWLEY	SH 96 ML over BLACK DRAW	Construction Complete
H-17-M	Rehab, no new number	2	EL PASO	I 25 ML over DRAW	Construction Complete
H-18-A	H-18-AD	2	EL PASO	US 24 ML over BLACK SQUIRREL CREEK; W of PEYTON	Construction Complete
I-17-AE	Rehab, no new number	2	EL PASO	US 24 ML EBND over FOUNTAIN CREEK	Construction Complete

**Current List of Completed Bridges
Q2 - FY2015**

Original Bridge Number	New Bridge Number	Region	County	Facility Carried over Featured Intersection	Status
I-18-G	I-18-BQ	2	EL PASO	US 24 ML over DRAW; E of FALCON	Construction Complete
J-18-S	025A122850NL	2	EL PASO	I 25 ML NBND over DRAW; S of FOUNTAIN	Construction Complete
J-18-T	025A122564NL	2	EL PASO	I 25 ML NBND over DRAW; S of FOUNTAIN	Construction Complete
J-15-B	J-15-F	2	FREMONT	SH 9 ML over CURRANT CREEK; NW of JCT US 50	Construction Complete
K-16-K	K-16-AL	2	FREMONT	SH 120 ML over RR, ARKANSAS RIVER; E of PORTLAND	Construction Complete
K-16-Q	K-16-AM	2	FREMONT	SH 120 ML over HARDSCRABBLE CREEK	Construction Complete
K-16-W	K-16-F	2	FREMONT	SH 67 ML over DRAW	Construction Complete
N-16-L	N-16-Q	2	HUERFANO	SH 69 ML over TURKEY CREEK	Construction Complete
N-17-C	N-17-BV	2	HUERFANO	I 25 BUS RT over SULL CREEK; Near WALSENBURG	Construction Complete
N-17-N	N-17-BU	2	HUERFANO	I 25 ML NBND over MISSOURI CREEK	Construction Complete
O-16-A	O-16-C	2	HUERFANO	SH 12 ML over CUCHARAS RIVER; S of LA VETA	Construction Complete
K-23-B	K-23-X	2	KIOWA	SH 96 ML over DRAW	Construction Complete
K-23-C	K-23-W	2	KIOWA	SH 96 ML over DRAW	Construction Complete
K-24-A	K-24-B	2	KIOWA	SH 96 ML over DRAW	Construction Complete
O-19-H	O-19-R	2	LAS ANIMAS	US 350 ML over PURGATOIRE RIVER; NE of JCT US 160	Construction Complete
O-19-J	O-19-AH	2	LAS ANIMAS	US 350 ML over DRAW; S of MODEL	Construction Complete
P-17-H	P-17-AG	2	LAS ANIMAS	SH 12 ML over PURGATOIRE RIVER; NW of WESTON	Construction Complete
P-18-B	P-18-BK	2	LAS ANIMAS	I 25 ML NBND over PURGATOIRE RIVER	Construction Complete
P-18-S	P-18-BL	2	LAS ANIMAS	I 25 ML SBND over PURGATOIRE RIVER	Construction Complete
P-19-AD	P-19-AV	2	LAS ANIMAS	SH 239(CO RD 75) ML over IRRIGATION CANAL; in TRINIDAD	Construction Complete
L-22-E	L-22-CM	2	OTERO	SH 266 ML over FT LYON STORAGE CANAL; NE of ROCKY FORD	Construction Complete
L-22-K	L-22-CO	2	OTERO	SH 71 ML over FT LYON CANAL; NW of ROCKY FORD	Construction Complete
L-22-O	L-22-CN	2	OTERO	SH 266 ML over HOLBROOK CANAL; NE of ROCKY FORD	Construction Complete

**Current List of Completed Bridges
Q2 - FY2015**

Original Bridge Number	New Bridge Number	Region	County	Facility Carried over Featured Intersection	Status
M-21-D	M-21-F	2	OTERO	US 350 ML over DRAW; SW of LA JUNTA & TIMPAS	Construction Complete
G-12-L	Rehab, no new number	2	PARK	SH 9 ML over BUCKSKIN GULCH; in ALMA	Construction Complete
L-28-F	L-28-H	2	PROWERS	SH 89 ML over ARKANSAS RIVER; S of HOLLY	Construction Complete
K-18-Z	K-18-GS & K-18-GT	2	PUEBLO	SH 96 ML over RDWY, RR, ARKANSAS RIVER	Construction Complete
L-19-C	L-19-Y	2	PUEBLO	US 50 BUS RT WBND over ST CHARLES RIVER	Construction Complete
M-17-R	Rehab, no new number	2	PUEBLO	I 25 ML over DRAW	Construction Complete
M-20-A	M-20-D	2	PUEBLO	SH 10 ML over SAUNDERS ARROYO	Construction Complete
H-16-K	H-16-N	2	TELLER	SH 67 ML over DRAW	Construction Complete
I-15-Y	Rehab, no new number	2	TELLER	US 24 ML over TWIN CREEK	Construction Complete
F-08-F	F-08-AJ	3	EAGLE	I 70 SERVICE RD over COLORADO RIVER (SR); N. of DOTSERO INT.	Construction Complete
F-09-H	F-09-AS	3	EAGLE	US 6 ML over EAGLE RIVER; E of EAGLE	Construction Complete
J-09-C	Rehab, no new number	3	GUNNISON	US 50 SERVICE RD over GUNNISON RVR OVERFLOW (SR); W. SIDE of GUNNISON	Construction Complete
J-09-D	Rehab, no new number	3	GUNNISON	US 50 SERVICE RD over GUNNISON RVR (SR); W. SIDE of GUNNISON	Construction Complete
J-09-G	J-09-F	3	GUNNISON	SH 114 ML over TOMICHI CREEK	Construction Complete
G-11-F	G-11-G	3	LAKE	US 24 ML over UP RR	Construction Complete
H-11-D	H-11-AC	3	LAKE	US 24 ML over CALIFORNIA GULCH	Construction Complete
H-11-F	024A178974BR	3	LAKE	US 24 ML over CALIFORNIA GULCH	Construction Complete
H-09-B	Rehab, no new number	3	PITKIN	SH 82 ML over CO RD, CASTLE CREEK	Construction Complete
C-09-C	C-09-AU	3	ROUTT	US 40 ML over E FORK ELK RIVER; W of STEAMBOAT SPGS	Construction Complete
G-21-B	G-21-AP	4	ELBERT	I 70 FRONTAGE RD over DRAW (SR)	Construction Complete
B-16-AE	B-16-AJ	4	LARIMER	US 287 ML over DRAW; N of JCT SH 1	Construction Complete
C-15-I	C-15-AL	4	LARIMER	US 34 ML over BIG THOMPSON RIVER	Construction Complete
C-15-J	C-15-AM	4	LARIMER	US 34 ML over BIG THOMPSON RIVER	Construction Complete
G-22-J	G-22-CD	4	LINCOLN	US 24 ML over DRAW; E of LIMON	Construction Complete

**Current List of Completed Bridges
Q2 - FY2015**

Original Bridge Number	New Bridge Number	Region	County	Facility Carried over Featured Intersection	Status
A-24-C A-26-F	minor structure 138A014381BL minor structure 138A041940BL	4	LOGAN SEDGWICK	US 138 ML over DITCH/DRAW	Construction Complete
B-17-C	B-17-DF	4	WELD	US 85 ML(NUNN BRIDGE) over UPRR	Construction Complete
B-17-L	B-17-BU	4	WELD	SH 14 ML over COALBANK CREEK; W of AULT	Construction Complete
C-17-BN	C-17-FS	4	WELD	I 25 SERVICE RD over LITTLE THOMPSON RIVER; S of JCT SH 56	Construction Complete
D-17-AK	D-17-FK	4	WELD	SH 66 ML over ST VRAIN RIVER; W of PLATTEVILLE	Construction Complete
D-28-B	D-28-U	4	YUMA	US 34 ML over N FK REPUBLICAN RIVER; W of LAIRD	Construction Complete
O-05-AQ	Rehab, no new number	5	LA PLATA	US 160 ML over ANIMAS RIVER	Construction Complete
L-05-B	L-05-E	5	OURAY	SH 62 ML over UNCOMPAHGRE RIVER; SHERMAN ST in RIDGWAY	Construction Complete
L-06-A	L-06-B	5	OURAY	US 550 ML over BEAR CREEK	Construction Complete
M-06-K	M-06-L	5	SAN JUAN	US 550 ML over MINERAL CREEK	Construction Complete
L-04-B	L-04-H	5	SAN MIGUEL	SH 145 ML over LEOPARD CREEK; JCT SH 62 - PLACERVILLE	Construction Complete

**List of All FASTER-Eligible Bridges
Q2 - FY2015**

Original Bridge Number	Region	County	Facility Carried over Featured Intersection	Budget	Current Const. Start Date	Current Completion Date	Status	Project Delivery Method1
F-17-DM	1	ARAPAHOE	SH 88 ML/ARAP RD over CHERRY CREEK; W OF SH 83(PARKER RD)	\$30,132,015	10/21/13	05/01/15	In Construction	D-B-B
F-16-ER	1	JEFFERSON	US 6 ML over GARRISON STREET (LAKEWOOD)	\$15,169,615	01/15/15	11/06/15	In Design	Streamlined D/B
E-16-FL	1	BROOMFIELD	CNTY RD / OLD WADS over US 36 ML (DENVER/BOULDER TNPK); SE of JCT SH 121	\$13,355,054	05/10/12	10/30/13	Construction Complete	D/B
E-16-FK	1	BROOMFIELD	SH 121 ML SBND- WADSWORTH PKWY over US 36 ML (DENVER/BOULDER TNPK)	\$28,151,957	05/10/12	10/30/13	Construction Complete	D/B
F-14-Y	1	CLEAR CREEK	I 70(BUSINESS RT) over I 70 ML	\$10,345,000	04/01/15	10/30/15	In Design	CMGC
F-17-BS	1	ARAPAHOE	US 40 ML(E COLFAX) WBND over SAND CREEK; E of I-225	See F-17-F	07/23/13	01/15/15	In Construction	D-B-B
G-17-A	1	DOUGLAS	US 85 ML over SAND CREEK	\$487,800			In Design	D-B-B
E-17-KR	1	DENVER	I 270 ML EBND over I 70 ML	\$0			Not Programmed	Not Programmed
E-17-DF	1	DENVER	I 70 ML WBND over UP RR W of QUEBEC STREET	\$0			Not Programmed	Not Programmed
E-17-EW	1	DENVER	I 70 ML EBND over UP RR; W of QUEBEC STREET	\$0			Not Programmed	Transfer out of CBE
E-17-ER	1	ADAMS	SH 44 ML(104TH AVE) over BULL SEEP; W of US 85	\$13,700,609	01/06/14	06/30/15	In Construction	D-B-B
E-16-HA	1	JEFFERSON	SH 58 ML over FORD STREET, WASH	\$6,654,378	06/04/13	06/27/14	Construction Complete	D-B-B
F-16-EF	1	DENVER	US 6 ML over SOUTH PLATTE RIVER; W SIDE OF I-25	\$16,378,312	01/15/14	09/30/15	In Construction	D/B
F-16-EJ	1	DENVER	US 6 ML over BNSF RR; E SIDE OF I-25	\$14,144,166	01/15/14	09/30/15	In Construction	D/B
E-17-JP	1	DENVER	I 70 ML over HAVANA ST, UP RR	\$34,823,400	02/18/15	05/02/16	In Construction	D/B
F-16-EN	1	DENVER	US 6 ML over BRYANT STREET; W SIDE OF I-25	\$36,433,142	01/15/14	09/30/15	In Construction	D/B
E-17-IC	1	ADAMS	YORK STREET over I 270 ML	\$0			Not Programmed	Not Programmed
F-19-AF	1	ADAMS	COUNTY ROAD over I 70 ML	\$0			Not Programmed	Not Programmed
F-17-GA	1	ARAPAHOE	US 40 ML(E COLFAX) WBND over TOLLGATE CREEK; W of I-225	See F-17-GO	06/09/14	01/31/16	In Construction	D-B-B
E-17-AH	1	DENVER	ON 40TH AVE W of SH 2 ML over BNSF RR	\$0			No Action Proposed	Transfer out of CBE
E-16-AA	1	ADAMS	US 287 ML over BNSF RR SPUR; at 69TH AVE	\$22,769,135	02/20/15	08/30/16	Design Completed	D-B-B
E-17-CA	1	ADAMS	SH 44 ML(104TH AVE) over SOUTH PLATTE RIVER; W of JCT US 85	See E-17-ER	01/06/14	06/30/15	In Construction	D-B-B
F-17-GO	1	ARAPAHOE	US 40 ML(E COLFAX) EBND over TOLLGATE CREEK; W of I-225	\$14,347,234	06/09/14	01/31/16	In Construction	D-B-B
E-17-EP	1	ADAMS	SH6 DITCH RIDER RD over BURLINGTON CANAL SR	\$0			No Action Proposed	Not Programmed
F-19-F	1	ARAPAHOE	US 36 ML over DRAW	\$0			Not Programmed	Not Programmed
E-17-DC	1	ADAMS	I 76 ML EBND over UP RR; E of JCT US 85	\$17,856,815	08/04/14	09/15/15	In Construction	D-B-B
E-17-DU	1	ADAMS	I 76 ML WBND over UP RR; E of JCT US 85	See E-17-DC	08/04/14	09/15/15	In Construction	D-B-B
F-17-F	1	ARAPAHOE	US 40 ML(E COLFAX) EBND over SAND CREEK; E of I-225	\$10,612,947	07/23/13	01/15/15	In Construction	D-B-B
F-15-BL	1	CLEAR CREEK	I 70 ML WBND over US 6, CLEAR CREEK	\$30,000,000			No Action Proposed	Not Programmed
E-17-FX	1	DENVER	I 70 ML over US 6, RR, CITY ST	\$39,500,000			In Design	Design Phase
F-15-D	1	CLEAR CREEK	I 70 FRONTAGE RD over CLEAR CREEK (SR)	\$275,000			No Action Proposed	Not Programmed
F-16-GG	1	DENVER	PERRY STREET over US 6 ML; W of FEDERAL	\$0			No Action Proposed	Transfer out of CBE
F-16-OG	1	DENVER	RAMP to I 25 NBND over US 6 ML	\$0		12/20/12	Construction Complete	D-B-B
E-16-FP	1	ADAMS	80TH AVE over US 36 ML	\$11,359,268	05/06/10	10/20/11	Construction Complete	D-B-B
E-16-FW	1	DENVER	PECOS STREET over I 70 ML; in DENVER	\$25,504,108	11/05/12	10/01/13	Construction Complete	CMGC
E-16-FX	1	JEFFERSON	WASHINGTON STREET over SH 58 ML	\$0	02/20/08	11/02/09	Construction Complete	D-B-B

**List of All FASTER-Eligible Bridges
Q2 - FY2015**

Original Bridge Number	Region	County	Facility Carried over Featured Intersection	Budget	Current Const. Start Date	Current Completion Date	Status	Project Delivery Method1
E-16-GQ	1	ADAMS	SH 95 ML (SHERIDAN BLVD) over UP RR, RR SPUR; N of JCT I 76 in WHEATRIDGE	\$6,989,679	04/24/12	11/01/13	Construction Complete	D-B-B
E-16-HI	1	JEFFERSON	SH 58 ML over CO.RD,RR SPUR	\$0			Construction Complete	D-B-B
E-17-AR	1	ADAMS	SH 7 ML over SOUTH PLATTE RIVER	\$0	05/19/09	01/07/11	Construction Complete	D-B-B
E-17-BY	1	DENVER	I 70 ML EBND over SAND CREEK; E of QUEBEC ST	See E-17-GE	07/29/11	07/06/12	Construction Complete	D-B-B w/ A+B bid
E-17-DM	1	ADAMS	I 76 ML WBND over UP RR	\$6,750,000			Construction Complete	D-B-B
E-17-DN	1	ADAMS	I 76 ML EBND over UP RR	\$0			Construction Complete	D-B-B
E-17-EX	1	ADAMS	PEORIA STREET over I 76 ML; NE of JCT US 85	\$5,927,917	07/24/13	12/05/13	Construction Complete	D-B-B
E-17-EZ	1	ADAMS	84TH AVE over I 25 ML	\$11,949,236	02/24/11	10/31/12	Construction Complete	D-B-B
E-17-GE	1	DENVER	I 70 ML WBND over SAND CREEK; E of QUEBEC ST	\$10,783,656	07/29/11	07/06/12	Construction Complete	D-B-B w/ A+B bid
E-17-GL	1	ADAMS	I 76 ML WBND over SOUTH PLATTE RIVER; NE of JCT I 270	See E-17-GM	09/12/11	07/23/12	Construction Complete	D-B-B w/ A+B bid
E-17-GM	1	ADAMS	I 76 ML EBND over SOUTH PLATTE RIVER; NE of JCT I 270	\$13,123,686	09/12/11	07/23/12	Construction Complete	D-B-B w/ A+B bid
E-17-HG	1	ADAMS	104TH AVE over I 25 ML	\$8,536,596	05/21/09	12/20/10	Construction Complete	D-B-B
E-17-HL	1	ADAMS	I 76 ML EBND over SH 224 ML	\$0			Construction Complete	D-B-B
F-14-B	1	CLEAR CREEK	I 70 FRONTAGE RD over CLEAR CREEK (SR); W IDAHO SPRINGS	\$1,923,453	07/19/10	11/23/10	Construction Complete	D-B-B
F-16-AM	1	JEFFERSON	US 285 ML SBND over SH 121 ML	\$47,395,760	08/31/10	07/31/11	Construction Complete	D-B-B
F-16-AY	1	JEFFERSON	US 285 ML NBND over SH 121 ML	\$0	08/31/10	07/31/11	Construction Complete	D-B-B
F-16-BM	1	DENVER	SH 88 ML over RR, LAKEWOOD GULCH	\$6,000,000			Construction Complete	D-B-B
F-16-CS	1	JEFFERSON	SH121 ML-WADSWORTH over BEAR CREEK; N OF 285	\$10,116,162	03/26/12	08/30/13	Construction Complete	D-B-B
F-16-DP	1	DENVER	I 25 ML over RDWY,RR, SOUTH PLATTE RVR; BRONCO BRIDGE	\$24,359,991	05/02/11	07/11/13	Construction Complete	D-B-B
F-16-DT	1	DENVER	I 25 ML NBND over US 85 ML (SANTA FE)	\$17,921,726	07/11/11	09/19/13	Construction Complete	D-B-B
F-16-DW	1	DENVER	I 25 ML SBND over US 85 ML (SANTA FE)	See F-16-DT	07/11/11	09/19/13	Construction Complete	D-B-B
F-16-F	1	ARAPAHOE	US 85(SANTA FE) ML NBND over DAD CLARK GULCH; in LITTLETON	\$3,031,094	11/27/12	09/05/13	Construction Complete	Streamlined D/B
F-16-FL	1	JEFFERSON	US 6 ML over SH 95 ML/SHERIDAN AVE.	\$13,548,993	01/03/12	07/12/13	Construction Complete	D-B-B
F-16-FW	1	DENVER	US 287+SH 88 (FEDERAL) over US 40 ML (COLFAX)	\$7,919,733	09/26/11	01/16/13	Construction Complete	D-B-B
F-16-FY	1	ARAPAHOE	US 285 ML SBND over SH 88 ML	\$0	08/31/10	07/31/11	Construction Complete	D-B-B
F-16-FZ	1	ARAPAHOE	US 285 ML NBND over SH 88 ML	\$0	08/31/10	07/31/11	Construction Complete	D-B-B
F-16-I	1	JEFFERSON	US 285 ML SBND over PIERCE STREET	\$0	08/31/10	07/31/11	Construction Complete	D-B-B
F-17-AE	1	DENVER	SH 30 ML/HAVANA ST over CHERRY CREEK	\$5,778,918	02/07/11	06/15/12	Construction Complete	D-B-B
F-19-B	1	ARAPAHOE	US 36 ML over COMANCHE CREEK; E of STRASBURG	\$1,862,583	04/23/12	06/15/12	Construction Complete	D-B-B
G-16-B	1	DOUGLAS	US 85 ML over DRAW; COOK RANCH to LOUVIERS	\$3,191,328	10/19/12	11/15/13	Construction Complete	D-B-B
G-16-C	1	DOUGLAS	US 85 ML over DRAW; COOK RANCH to LOUVIERS	\$0	10/19/12	11/15/13	Construction Complete	D-B-B
K-16-K	2	FREMONT	SH 120 ML over RR, ARKANSAS RIVER; E of PORTLAND	\$6,135,195	10/08/12	06/27/14	Construction Complete	D-B-B
K-18-CL	2	PUEBLO	I 25 ML SBND over NP RR,ILEX ST,BENNET ST; S of JCT SH 96	\$46,693,055	05/01/15	10/01/16	In Design	D/B
K-18-CK	2	PUEBLO	I 25 ML NBND over NP RR,ILEX ST,BENNET ST; N of JCT SH 50 E	See K-18-CL	05/01/15	10/01/16	In Design	D/B
L-18-M	2	PUEBLO	I 25 ML NBND over INDIANA AVE	\$1,537,952	05/01/15	09/01/15	In Design	D/B
L-18-W	2	PUEBLO	I 25 ML SBND over INDIANA AVE	\$784,300	05/01/15	09/01/15	In Design	D/B

**List of All FASTER-Eligible Bridges
Q2 - FY2015**

Original Bridge Number	Region	County	Facility Carried over Featured Intersection	Budget	Current Const. Start Date	Current Completion Date	Status	Project Delivery Method1
L-22-O	2	OTERO	SH 266 ML over HOLBROOK CANAL; NE of ROCKY FORD	\$8,368,926	08/20/12	03/07/13	Construction Complete	CMGC
K-17-F	2	PUEBLO	SH 96 ML over RUSH CREEK	\$0			Not Programmed	Not Programmed
L-18-AQ	2	PUEBLO	NORTHERN AVE over I 25 ML	\$2,903,700	05/01/15	09/01/15	In Design	D/B
M-16-P	2	HUERFANO	SH 69 ML over MILLIGAN ARROYO; Near GARDNER	\$497,000			In Design	D-B-B
N-17-C	2	HUERFANO	I 25 BUS RT over SULL CREEK; Near WALSENBERG	\$2,866,513	02/17/14	09/03/14	Construction Complete	D-B-B
H-17-M	2	EL PASO	I 25 ML over DRAW	\$0	03/01/13	06/01/14	Construction Complete	D/B
L-28-C	2	PROWERS	US 50 ML over BNSF RR; E of GRANADA	\$8,308,887	02/23/15	07/01/16	In Construction	D-B-B
L-19-F	2	PUEBLO	US 50 BUS. RT over DRAW	\$0			Not Programmed	Not Programmed
N-17-S	2	HUERFANO	I25 ML NBND over CO RD 103, BUTTE CREEK	\$0			Not Programmed	Not Programmed
L-27-S	2	PROWERS	US 50 ML over DRAW; E of LAMAR	See L-28-C	02/23/15	07/01/16	In Construction	D-B-B
K-14-J	2	FREMONT	US 50 ML over DRAW, btwn TEXAS CREEK & COTOPAXI	\$2,101,360	03/01/15	06/30/15	Design Completed	D-B-B
K-18-R	2	PUEBLO	US 50 BUS EBND over ARKANSAS RIVER	\$1,684,583	05/01/15	09/01/15	In Design	D/B
I-17-O	2	EL PASO	I 25 SERVICE RD over PINE CREEK; S of JCT SH 56	\$168,126			No Action Proposed	D-B-B
L-22-E	2	OTERO	SH 266 ML over FT LYON STORAGE CANAL; NE of ROCKY FORD	See L-22-O	08/20/12	03/07/13	Construction Complete	CMGC
K-16-S	2	FREMONT	SH 120 ML over DRAW, UP RR; E of FLORENCE	\$5,858,271	10/27/14	11/20/15	In Construction	D-B-B
L-22-L	2	OTERO	SH 71 ML over ARKANSAS RIVER	\$0			Not Programmed	Not Programmed
N-17-BN	2	HUERFANO	I25 ML SBND over CO RD 640, BUTTE CREEK	\$0			Not Programmed	Not Programmed
P-23-A_MINOR	2	LAS ANIMAS	US 160 ML over SMITH CANYON TRIBUTARY; Near KIM, CO	\$2,203,796	03/27/15	11/30/15	Design Completed	D-B-B
K-14-B	2	FREMONT	US 50 ML over OAK CREEK	\$500,000			Not Programmed	D-B-B
O-19-H	2	LAS ANIMAS	US 350 ML over PURGATOIRE RIVER; NE of JCT US 160	\$4,033,137	04/29/13	04/11/14	Construction Complete	D-B-B
K-18-AX	2	PUEBLO	I 25 ML NBND over US 50 BUS. RTE.	\$2,561,500	05/01/15	09/01/15	In Design	D/B
L-18-AU	2	PUEBLO	MESA AVE over I 25 ML	\$1,926,100	05/01/15	09/01/15	In Design	D/B
L-19-G	2	PUEBLO	SH 96 ML over BOB CREEK CANAL	\$0			Not Programmed	Not Programmed
G-12-C	2	PARK	SH 9 ML over PLATTE GULCH	\$0			Not Programmed	Not Programmed
N-17-AD	2	HUERFANO	I 25 ML SBND over US 160 ML, RR SPUR	\$8,800,000			No Action Proposed	Not Programmed
I-17-AE	2	EL PASO	US 24 ML EBND over FOUNTAIN CREEK	\$0	08/04/10	10/21/10	Construction Complete	D-B-B
M-17-R	2	PUEBLO	I 25 ML over DRAW	\$0			Construction Complete	D-B-B
I-15-Y	2	TELLER	US 24 ML over TWIN CREEK	\$0	08/04/10	10/21/10	Construction Complete	D-B-B
L-24-F	2	BENT	SH 101 ML over PURGATOIRE RIVER; S of LAS ANIMAS	\$132,414	03/29/12	10/31/12	Construction Complete	Modified D/B
G-12-L	2	PARK	SH 9 ML over BUCKSKIN GULCH; in ALMA	\$322,466	9/5/11	12/29/11	Construction Complete	D-B-B
H-16-K	2	TELLER	SH 67 ML over DRAW	\$2,616,199	08/04/10	12/31/10	Construction Complete	D-B-B
H-18-A	2	EL PASO	US 24 ML over BLACK SQUIRREL CREEK; W of PEYTON	\$3,282,627	11/15/11	08/17/12	Construction Complete	D-B-B
I-18-G	2	EL PASO	US 24 ML over DRAW; E of FALCON	\$0			Construction Complete	D-B-B
J-15-B	2	FREMONT	SH 9 ML over CURRANT CREEK; NW of JCT US 50	\$1,856,602	05/04/11	10/31/11	Construction Complete	Modified D/B
K-16-Q	2	FREMONT	SH 120 ML over HARDSCRABBLE CREEK	\$0			Construction Complete	D-B-B
K-16-W	2	FREMONT	SH 67 ML over DRAW	\$0		09/30/13	Construction Complete	
K-18-Z	2	PUEBLO	SH 96 ML over RDWY, RR, ARKANSAS RIVER	\$0	11/07/07	04/01/11	Construction Complete	D-B-B
K-23-B	2	KIOWA	SH 96 ML over DRAW	\$2,283,354	08/18/10	09/21/11	Construction Complete	D-B-B

**List of All FASTER-Eligible Bridges
Q2 - FY2015**

Original Bridge Number	Region	County	Facility Carried over Featured Intersection	Budget	Current Const. Start Date	Current Completion Date	Status	Project Delivery Method1
K-23-C	2	KIOWA	SH 96 ML over DRAW	\$0	08/18/10	09/21/11	Construction Complete	D-B-B
K-24-A	2	KIOWA	SH 96 ML over DRAW	\$0	08/18/10	09/21/11	Construction Complete	D-B-B
L-19-C	2	PUEBLO	US 50 BUS RT WBND over ST CHARLES RIVER	\$2,956,532	10/16/09	07/22/10	Construction Complete	D-B-B
L-22-F	2	CROWLEY	SH 96 ML over BLACK DRAW	\$0	08/18/10	09/21/11	Construction Complete	D-B-B
L-22-K	2	OTERO	SH 71 ML over FT LYON CANAL; NW of ROCKY FORD	See L-22-O	08/20/12	03/07/13	Construction Complete	CMGC
L-28-F	2	PROWERS	SH 89 ML over ARKANSAS RIVER; S of HOLLY	\$6,369,958	02/16/11	12/01/11	Construction Complete	D-B-B
M-20-A	2	PUEBLO	SH 10 ML over SAUNDERS ARROYO	\$2,000,000			Construction Complete	D-B-B
M-21-D	2	OTERO	US 350 ML over DRAW; SW of LA JUNTA & TIMPAS	\$1,959,159	10/19/11	05/18/12	Construction Complete	D-B-B
M-24-B	2	BENT	SH 101 ML over DRAW; S of LAS ANIMAS and JCT US 50	\$4,000,391	03/29/12	10/31/12	Construction Complete	Modified D/B
N-16-L	2	HUERFANO	SH 69 ML over TURKEY CREEK	\$2,474,988	06/22/11	07/15/11	Construction Complete	D-B-B
N-17-N	2	HUERFANO	I 25 ML NBND over MISSOURI CREEK	\$2,521,902	01/27/11	09/01/11	Construction Complete	D-B-B
O-16-A	2	HUERFANO	SH 12 ML over CUCHARAS RIVER; S of LA VETA	\$176,063	02/19/12	11/15/12	Construction Complete	Modified D/B
O-19-J	2	LAS ANIMAS	US 350 ML over DRAW; S of MODEL	\$2,405,062	12/03/12	06/18/13	Construction Complete	D-B-B
O-25-H	2	BACA	US 160 ML over N FK SAND ARROYO; SW of PRITCHETT	\$0	03/29/12	12/13/12	Construction Complete	Modified D/B
O-25-I	2	BACA	US 160 ML over DRAW; W of PRITCHETT	\$0	03/29/12	12/13/12	Construction Complete	Modified D/B
O-26-L	2	BACA	US 160 ML over CAT CREEK; W of SPRINGFIELD	\$3,957,457	03/29/12	12/13/12	Construction Complete	Modified D/B
P-17-H	2	LAS ANIMAS	SH 12 ML over PURGATOIRE RIVER; NW of WESTON	\$2,283,354	02/19/12	11/15/12	Construction Complete	Modified D/B
P-18-B	2	LAS ANIMAS	I 25 ML NBND over PURGATOIRE RIVER	\$0			Construction Complete	D-B-B
P-18-S	2	LAS ANIMAS	I 25 ML SBND over PURGATOIRE RIVER	\$0	12/01/06		Construction Complete	D-B-B
P-19-AD	2	LAS ANIMAS	SH 239(CO RD 75) ML over IRRIGATION CANAL; in TRINIDAD	See O-19-J	12/03/12	06/18/13	Construction Complete	D-B-B
J-18-S	2	EL PASO	I 25 ML NBND over DRAW; S of FOUNTAIN	\$1,150,693	02/20/12	08/17/12	Construction Complete	Streamlined D/B
J-18-T	2	EL PASO	I 25 ML NBND over DRAW; S of FOUNTAIN	See J-18-S	02/20/12	08/17/12	Construction Complete	Streamlined D/B
L-21-U	2	CROWLEY	SH 96 ML over NUMA DRAIN CANAL	\$0			Construction Complete	D-B-B
D-13-A	3	GRAND	US 34 ML over N FK COLORADO RIVER	\$0			Not Programmed	Not Programmed
F-10-C	3	EAGLE	US 6 ML over EAST LAKE CREEK	\$0			Not Programmed	Not Programmed
F-07-A	3	GARFIELD	SH 82 ML over I70 ML, COLORADO RVR,RR; GLENWOOD SPRINGS	\$106,373,208	09/01/15	12/31/17	In Design	CMGC
F-11-AC	3	EAGLE	I 70 ML EBND over US 6, RR, EAGLE RIVER; E of JCT SH 131	\$14,423,855	07/19/14	06/03/16	In Construction	D-B-B w/ A+B bid
F-10-L	3	EAGLE	I 70 ML EBND over US 6, RR, EAGLE RIVER	\$0			Not Programmed	D-B-B w/ A+B bid
F-11-AB	3	EAGLE	I 70 ML WBND over US 6, RR, EAGLE RIVER; E of JCT US 24	See F-11-AC	07/19/14	06/03/16	In Construction	D-B-B w/ A+B bid
F-08-D	3	EAGLE	I 70 ML over UP RR (SR)	\$0			Not Programmed	Not Programmed
G-03-Q	3	MESA	I 70 ML WBND over COLORADO RIVER OVERFLOW	\$0			Not Programmed	D-B-B w/ A+B bid
F-05-C	3	GARFIELD	SH 13 ML over RIFLE CREEK	\$0			No Action Proposed	Not Programmed
F-05-L	3	GARFIELD	I 70 ML WBND over COLORADO RIVER	\$0			Not Programmed	D-B-B w/ A+B bid
E-12-I	3	SUMMIT	SH 9 ML over BLUE RIVER	\$0			No Action Proposed	Not Programmed
F-11-AO	3	EAGLE	I 70 ML EBND over TIMBER CREEK	\$0			No Action Proposed	Not Programmed
H-09-B	3	PITKIN	SH 82 ML over CO RD, CASTLE CREEK	\$981,611	01/27/11	07/21/11	Construction Complete	D-B-B
J-09-C	3	GUNNISON	US 50 SERVICE RD over GUNNISON RVR OVERFLOW (SR); W. SIDE of GUNNISON	\$2,716,287	08/29/11	08/31/12	Construction Complete	D-B-B
J-09-D	3	GUNNISON	US 50 SERVICE RD over GUNNISON RVR (SR); W. SIDE of GUNNISON	See J-09-C	08/29/11	08/31/12	Construction Complete	D-B-B

**List of All FASTER-Eligible Bridges
Q2 - FY2015**

Original Bridge Number	Region	County	Facility Carried over Featured Intersection	Budget	Current Const. Start Date	Current Completion Date	Status	Project Delivery Method1
C-09-C	3	ROUTT	US 40 ML over E FORK ELK RIVER; W of STEAMBOAT SPGS	\$5,635,097	02/28/13	11/19/13	Construction Complete	D-B-B
F-08-F	3	EAGLE	I 70 SERVICE RD over COLORADO RIVER (SR); N. of DOTSERO INT.	\$9,933,655	09/04/12	09/30/13	Construction Complete	CMGC
F-09-H	3	EAGLE	US 6 ML over EAGLE RIVER; E of EAGLE	\$4,507,855	07/20/11	05/18/12	Construction Complete	D-B-B
G-11-F	3	LAKE	US 24 ML over UP RR	\$6,891,828	12/30/10	11/09/11	Construction Complete	D-B-B
H-11-D	3	LAKE	US 24 ML over CALIFORNIA GULCH	\$0	7/26/2012	11/2/2012	Construction Complete	CDOT replacement
H-11-F	3	LAKE	US 24 ML over CALIFORNIA GULCH	\$0	7/26/2012	11/2/2012	Construction Complete	CDOT replacement
J-09-G	3	GUNNISON	SH 114 ML over TOMICHI CREEK	\$0			Construction Complete	D-B-B
C-17-B	4	WELD	SH 60 ML over SOUTH PLATTE RIVER	\$0			Not Programmed	Not Programmed
B-16-D	4	LARIMER	SH 14 ML over CACHE LA POUDRE RIVER; E of JCT US 287	\$15,235,491	09/15/14	11/20/15	In Construction	D-B-B
B-16-EU	4	LARIMER	COUNTY ROAD 48 over I 25 ML	\$0			Not Programmed	Not Programmed
B-17-C	4	WELD	US 85 ML(NUNN BRIDGE) over UPRR	\$7,652,645	03/17/13	06/13/14	Construction Complete	D-B-B
B-16-AM	4	LARIMER	PROSPECT ROAD over I 25 ML	\$0			Not Programmed	Not Programmed
D-19-A	4	WELD	I 76 SERVICE RD over LOST CREEK SR	\$0			No Action Proposed	Not Programmed
G-21-Y	4	ELBERT	I 70 BUSINESS SPUR over I 70 ML	\$200,000			No Action Proposed	Not Programmed
C-17-EL	4	LARIMER	I 25 ML over DRAW	\$1,078,230	02/07/12		No Action Proposed	Not Programmed
E-15-AA	4	BOULDER	SH 170 ML over COMMUNITY DITCH AR	-			No Action Proposed	No Action Required
C-18-BK	4	WELD	US 85 BYPASS SBND over US 85 BUS RT	\$0			No Action Proposed	Not Programmed
B-16-AE	4	LARIMER	US 287 ML over DRAW; N of JCT SH 1	\$3,964,645	07/25/11	05/01/12	Construction Complete	D-B-B
B-17-L	4	WELD	SH 14 ML over COALBANK CREEK; W of AULT	\$5,712,268	02/01/13	09/30/13	Construction Complete	D-B-B
C-15-I	4	LARIMER	US 34 ML over BIG THOMPSON RIVER	\$5,362,816	08/17/09	06/30/10	Construction Complete	D-B-B
C-15-J	4	LARIMER	US 34 ML over BIG THOMPSON RIVER	\$0	08/17/09	06/30/10	Construction Complete	D-B-B
C-17-BN	4	WELD	I 25 SERVICE RD over LITTLE THOMPSON RIVER; S of JCT SH 56	\$2,723,890	09/04/12	04/12/13	Construction Complete	D/B
D-17-AK	4	WELD	SH 66 ML over ST VRRAIN RIVER; W of PLATTEVILLE	\$6,000,266	11/05/12	10/30/13	Construction Complete	D-B-B
D-28-B	4	YUMA	US 34 ML over N FK REPUBLICAN RIVER; W of LAIRD	\$3,474,546	06/25/12	12/14/12	Construction Complete	D-B-B
G-21-B	4	ELBERT	I 70 FRONTAGE RD over DRAW (SR)	\$1,361,415	01/28/13	05/23/13	Construction Complete	D-B-B
G-22-J	4	LINCOLN	US 24 ML over DRAW; E of LIMON	\$1,044,720	05/02/11	08/24/11	Construction Complete	D-B-B
A-24-C A-26-F	4	LOGAN SEDGWICK	US 138 ML over DITCH/DRAW	\$869,367	10/01/10	12/15/10	Construction Complete	D-B-B
N-11-C	5	RIO GRANDE	SH 112 ML over RIO GRANDE CANAL	\$0			Not Programmed	Not Programmed
K-01-C	5	MONTROSE	SH 90 ML over DOLORES RIVER	\$3,200,000			In Design	D-B-B
O-12-AD	5	CONEJOS	SH 371 ML over ALAMOSA RIVER	\$0			No Action Proposed	Not Programmed
O-05-AQ	5	LA PLATA	US 160 ML over ANIMAS RIVER	\$806,013	07/26/10	11/23/10	Construction Complete	D-B-B
L-04-B	5	SAN MIGUEL	SH 145 ML over LEOPARD CREEK; JCT SH 62 - PLACERVILLE	\$3,855,354	05/15/12	12/07/12	Construction Complete	D-B-B
L-05-B	5	OURAY	SH 62 ML over UNCOMPAGHRE RIVER; SHERMAN ST in RIDGWAY	\$7,804,596	04/24/12	11/09/12	Construction Complete	D-B-B
L-06-A	5	OURAY	US 550 ML over BEAR CREEK	\$5,850,074	07/26/10	10/24/11	Construction Complete	D-B-B
M-06-K	5	SAN JUAN	US 550 ML over MINERAL CREEK	\$3,651,884	08/17/09	06/01/11	Construction Complete	D-B-B

Colorado State Map of FASTER Eligible Bridges

Legend

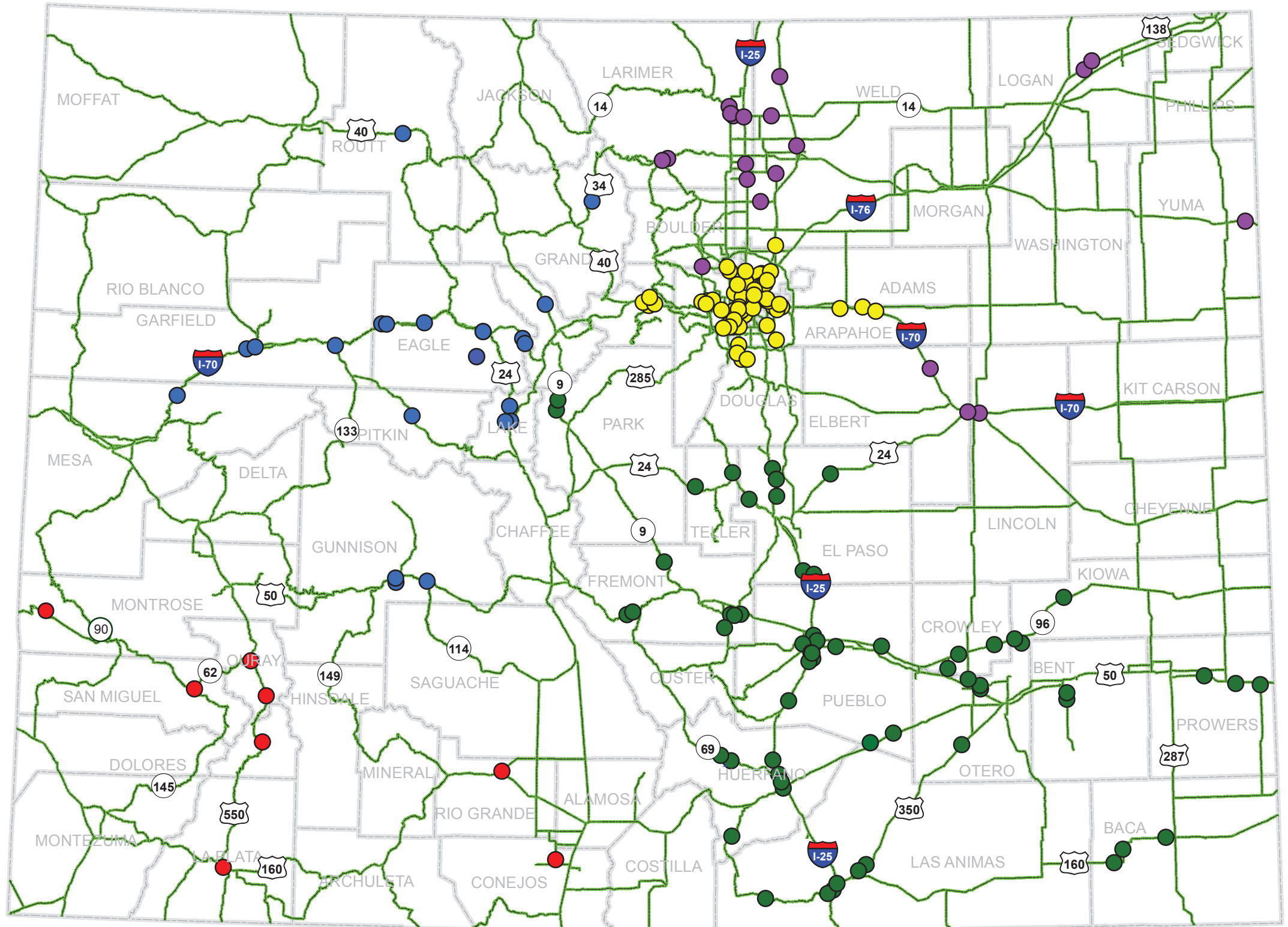
Deficient Bridges

REGION

- 1
- 2
- 3
- 4
- 5

— HIGHWAYS

□ COUNTIES



183 Faster Eligible Bridges