



**COLORADO**

**Department of Transportation**

Statewide Bridge Enterprise

# Colorado Bridge Enterprise

Quarterly Report No. 14 (Q1 FY2015)

December 20, 2014

## Introduction

This report is the fourteenth Quarterly Report (or Report) published in support of the Colorado Bridge Enterprise (CBE or “Program”). This Report outlines progress and accomplishments associated with the Program for work completed during July, August and September of 2014; which coincides with the first quarter of CDOT’s 2015 fiscal year (or Q1 FY2015). Detailed information regarding the FASTER (Funding Advancement for Surface Transportation and Economic Recovery) legislation, program development activities, bond program, previous significant milestones and achievements can be found in the Program Annual Reports and previous Quarterly Reports viewable on CDOT website at [www.coloradodot.info/programs/BridgeEnterprise](http://www.coloradodot.info/programs/BridgeEnterprise).

During Q1 FY2015, the Program primarily focused on the delivery of bridge projects partially or fully funded by the \$300M bond program. The following is an itemization of significant achievements which are discussed in further detail later in the report:

- Drafted the thirteenth Bridge Enterprise Quarterly Report for Q4 FY2014 (April, May and June of 2014).
- Completed monthly updates to the overall program schedule for work completed in July, August and September of 2014. Also presented updates at the ACEC quarterly meeting.
- Bond Allocation Plan updated through Q4 FY2014 (June 2014).
- Provided FASTER Lawsuit Appeal decision update at September Board of Directors meeting.
- Approval and adoption of the FY2015 Bridge Enterprise first, and second Budget Supplements.
- Updated program status for various program metrics including Major Achievements, Total Program Financial Performance, Status of FASTER Eligible Bridges, Status of \$300M Bond Bridges, Status of 30 Most Deficient Bridges, and Un-programmed Priority Bridge Enterprise Bridges.
- Provided the Schedule Change Control Board with draft schedule alternatives to promote discussion on what can be done to streamline the Baseline Schedule Change process.
- Approval, adoption and posting of Guidance Document #8, Revision 1.
- Completed draft Q2 FY2015 Maintenance Invoice.

## Program Highlights

There are currently 93 bridges that are partially or fully funded to be completed as part of the \$300M bond program. Three quarters of the bond funded bridge projects can be classified as complete, in construction or are waiting to go to construction (70 in total); as compared to the number of bridges in the pre-construction or design phase (23 in total).

Projects in the preconstruction phase are primarily focused on the completion of the PS&E’s (Plans, Specifications and Estimates). In conjunction with this, CDOT specialty groups are diligently working on completing the requisite approvals and permits associated with environmental, railroad, and utility clearances or relocations; securing the necessary Right-of-Way (ROW); and finalizing intergovernmental agreements (as required), etc. Per the current program schedule, construction work is projected to stay

at a high level through calendar year 2014, and the work will taper-off during calendar year 2015 into calendar year 2016.

As of the end of September 2014, there were a total of one-hundred-eighty (180) bridges considered eligible to receive FASTER funding. The progress status associated with these 180 structures is itemized in Table 1 below.

**Table 1.** Project Status as of Q1 FY2015

Project Phase	Bridge Number
Future Projects	22
In Design Phase	21
In Construction Phase	15
Projects Complete <sup>(1)</sup>	106
No Action Proposed	16
<b>Total <sup>(2) (3)</sup></b>	<b>180</b>

- (1) Reference Appendix A for List of Completed Bridges
- (2) Reference Appendix B for complete List of FASTER eligible bridges
- (3) Reference Appendix C for Colorado State map of FASTER eligible bridges

Other relevant bridge and financial statistics are as follows:

- Approximately 67% of FASTER eligible bridges (15+106) are now in construction or completed.
- Approximately 12% of FASTER eligible bridges (21) are currently in design.
- Only 12% of FASTER eligible bridges remain to be programmed (defined as Future Projects at 22); does not include bridges classified as “No Action Proposed”.
- Additionally, \$286.3M and \$18.3M of bond program funds have been expended or encumbered to date, respectively (reference Table 6).

The program schedule progress and performance information presented in Table 2 shows the value of the work complete through Q1 FY2015 as compared to what had been planned to be completed per the baseline schedule. The earned value of work complete to date was \$428.2M as compared to the planned value of the work scheduled to be completed at \$483.3M; which indicates that the program was approximately 9% behind the plan.

Note - Earned Value at the lowest level is attained by multiplying the percent complete of a project activity by its respective budget. Earned value is rolled-up from the project level to the region level, and then again rolled-up from the region level to the program level.

**Table 2.** Q1 FY2015 Earned Value by CDOT Region and Program (\$K)

CDOT Region	Planned Value of Work through Sept. 30, 2014	Earned Value of Work through Sept. 30, 2014 <sup>st</sup>	Schedule Variance
1	302,810	275,107	(27,703)
2	77,779	64,543	(13,236)
3	43,942	41,262	(2,680)
4	47,084	35,598	(11,486)
5	11,690	11,690	0
<b>Total</b>	<b>483,305</b>	<b>428,200</b>	<b>(55,105)</b>

The Program utilizes cost and schedule Key Performance Indicators (or KPIs) to track, monitor and report on program performance. As part of the monthly schedule update, a Schedule Performance Index (SPI) is calculated for each project included within the bond program. The SPI is also calculated and reported at the regional and program levels. The SPI is based upon earned value which compares actual progress to planned performance based upon work complete to date. The program SPI for work complete through September 2014 was 0.89; the same value indicated from the previous quarterly report (June 2014 SPI at 0.89). The program has established an SPI goal during execution of greater than or equal to 0.90.

## Program Activities and Accomplishments in Q1 FY2015

The Program's main activities and significant accomplishments are briefly described below.

### FASTER eligible bridges

There were no newly eligible structures added during Q1 FY2015.

### Pre-Construction Phase

There were no projects which began the pre-construction phase during this period.

### Projects that went to AD (Advertisement for Construction)

There were two projects (3 bridges) that went to AD during the period as itemized in Table 3 below.

**Table 3.** Projects / Bridges that went to AD

Region	Original Bridge Number	Facility Carried over Featured Intersection
2	L-27-S	US 50 ML over Draw; East of Lamar
2	L-28-C	US 50 ML over BNSF RR; East of Granada
1	F-16-ER	US 6 ML over Garrison Street (Lakewood)

### Completed Projects

There was one project completed during this period, as itemized in Table 4 below.

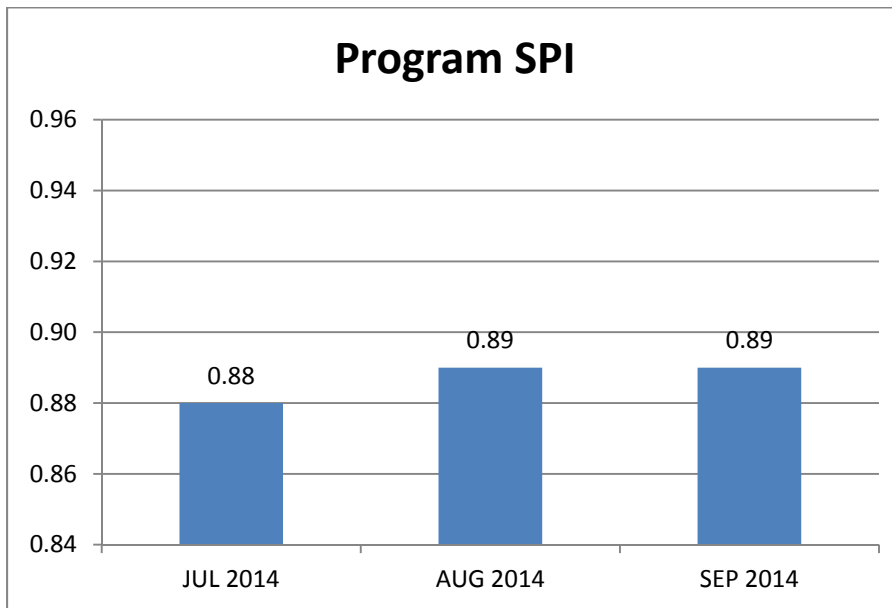
**Table 4.** Projects / Bridges Completed

Region	Original Bridge Number	County	Facility Carried over Featured Intersection
2	N-17-C	HUERFANO	I 25 BUS RT over SULL CREEK; Near WALSENBURG

**Program Schedule Update**

The program schedule was updated three times during the period for work complete in July, August and September of 2014. This includes publishing the monthly updated program bar-chart schedule, cost and schedule database, and list of projects with an SPI < 0.90. This information was consolidated and distributed to the Regional Transportation Director’s (or RTD’s) and their respective program engineers. The SPI’s reported for each month during the quarter are graphically depicted on Figure 1 below.

**Figure 1.** Program SPI Reported by Month



**Schedule Change Control Board**

The Schedule Change Control Board (SCCB) conducts monthly meetings that are attended by senior CDOT HQ staff, regional transportation directors and program engineers. The purpose of the SCCB meetings was two-fold: (1) document and review projects with an SPI < 0.90, and (2) allow the RTD’s (or their designated delegate) an opportunity to petition the SCCB to make adjustments to a project’s baseline schedule when the schedule logic does not reflect current project delivery and is artificially impacting the SPI calculation. Formal meeting minutes were published with a list of attendees and an itemized list of SCCB approved changes; subject changes were incorporated into the program schedule in the subsequent schedule update.

Note - the SCCB policy is not intended to provide relief to poorly performing projects. Any baseline adjustments must properly document project issues, and justifiable rationale on proposed adjustments including recommendations to improved project delivery, issues mitigation, required supplemental staffing, and proposed recovery schedules (as necessary).

### **Major Project/Program Strategic Planning and Coordination**

The Bridge Enterprise team continues to work intimately with various CDOT project teams on coordination, funding eligibility, and strategic planning issues associated with the following large projects:

- Region 1:
  - I-70 over Havana Street; Colfax over Tollgate Creek; Arapahoe Road over Cherry Creek: Bridge Enterprise staff continues to actively provide ongoing support for these projects.
  - US 287/69<sup>th</sup> bridge: Bridge Enterprise staff attended coordination meeting to discuss FHWA requirements and potential funding shortfall. Also worked with project team to prepare estimates for the October budget supplement.
  - US 6<sup>th</sup> Avenue bridge/road improvement: Bridge Enterprise has three replacement bridges in the project; 6<sup>th</sup> Ave over BNSF, So. Platte River and Bryant Street. Program staff attended meetings for project team coordination.
  - I-70 viaduct: Program staff met with region/project team and the CDOT region staff regarding financial and eligibility decision impacts with the Bridge Enterprise program. Also attended several meetings, including discussion of financial services contract scope, budget, bonding and financial forecasting, Outside Counsel interviews and selection meeting and SDEIS public hearings.
  - I-70 business route over I-70 ML east of Idaho Springs: Program staff attended several update design meetings this replacement/PPSL project.
  - I-70 ML WB over US 6: Bridge Enterprise Staff is supporting OFMB and Region 1 in the programming of this structure (F-15-BL).
- Region 2:
  - Ilex Design/Build Bridge Replacement/Rehabilitation project: Bridge Enterprise staff provided support regarding the over budget proposals received from all shortlisted team on the Ilex D/B project. Bridge Enterprise staff consulted region staff on preferred scope changes on “rehab” bridges to facilitate potential scope reduction and path forward efforts.
- Region 3:
  - SH 82 Grand Ave Bridge in Glenwood Springs:
    - Continue work with program engineer to track and forecast the estimated total project costs.
    - Worked with project team to review potential savings from the environmental phase for use in other areas of the project.
    - Attended meetings and/or conference calls regarding the status of right-of-way and utility issues, project leadership team coordination issues, and project public involvement issues.

- Provided project team with support for upcoming project presentation to Bridge Enterprise Board of Directors.
- Provided project team with input and support regarding 60% Opinion of Probable Construction Cost meeting with contractor's team.
- Provided guidance to the project management and design team on the avoidance of undesirable contractual risk elements.
- Produced several different analyses showing project budget, actuals and projections by phase for the project team.
- Provided guidance to the region regarding the financial constraints to which the project must adhere.
- Provided guidance and support to project team and region on the procurement of additional outside sources of funding.
- I-70 over US6, UPRR & Eagle River: Bridge Enterprise team continues to actively provide ongoing support to this project.
- Attended Region 3 Prioritization Meeting of currently eligible structures at EJMT Mountain Residency.

### **I-70 Viaduct Project**

Bridge Enterprise staff is currently proceeding with a proposed Bridge Enterprise project liability of \$850M for the I-70 East Segment 2 (Viaduct) project in regard to determining financial feasibility, impacts, and forecasts. This effort will enable Bridge Enterprise to update long-term plan documents. Bridge Enterprise internal staff has produced the forecast models with minor assistance from financial consultants. Work performed during the period consisted of building the models and associated graphs and tables that would forecast the scenarios that were determined to be the most likely. Based on a forecasted bond issue data from financial consultants, development of three core funding scenarios is proceeding. Collaboration on the draft models with senior CDOT staff, OMPD, HPTE, and their consultants is expected in October to present and discuss the results of model analysis. Presentation of these forecast models is scheduled to occur at the November Bridge Enterprise Board of Directors Meeting.

### **FASTER Process Audit**

The Office of the State Auditor (OSA) initiated a Bridge Enterprise Performance Audit this summer, which examines standard procedures and processes within the FASTER legislation. The audit is scheduled to conclude June 30, 2015. CDOT staff and the Bridge Enterprise team continue to conduct research and reporting tasks as requested by the OSA.

### **FASTER Lawsuit Update**

On August 14, 2014 the Colorado Court of Appeals issued its decision in the TABOR Foundation's appeal of the trial court's decision in favor of the Colorado Bridge Enterprise and others on all issues:

- Bridge safety surcharge is a fee and not a tax.
- CBE is a business providing a government service for a fee.
- \$14.4 million CBE received from FHWA does not count towards the CBE's state grant cap; does not preclude a finding that CBE is an enterprise.
- Transfer of bridges from CDOT to CBE does not constitute a state grant to the CBE.

## **Bond Spending**

Including net bond proceeds and interest earnings on the bond proceeds, the actual spend down was at 92.7% on September 30, 2014. The Bridge Enterprise team is continuing its efforts to assure 100% spend down of the bonds by: Transferring Bond budget from substantially complete and slow spending projects to projects that could spend the budget faster; and by the Bridge Enterprise Accountant billing the Trustee weekly rather than monthly to speed up the reimbursement process.

## **Monthly / Quarterly Program Reports**

*Q4 FY2014 Quarterly Report:* Bridge Enterprise completed the quarterly report highlighting program progress for work complete in April, May and June of 2014, which coincides with CDOT's fourth quarter of fiscal year 2014 (or Q4 FY2014).

*Q4 FY2014 Quarterly Bond Program Update:* The \$300M bond program allocation plan was updated for work complete through June 2014 (or Q4 FY2014). The Q4 FY2014 bond program update was presented at the September Bridge Enterprise Board meeting.

*Monthly Bond Program Update:* Program staff completes a monthly bond update rather than quarterly updates through year end. An update was performed for work complete through September 30, 2014.

## **FASTER Job Creation**

FHWA tracks the economic benefits of highway capital investments (which include bridge replacement projects), and from a job creation perspective employment impacts fall into three categories as listed below:

- Direct jobs are occupations that work directly on the project such as project planners, designers, engineers and construction workers.
- Indirect jobs means positions at suppliers of materials for the project, such as steel, concrete, wood, etc.
- Induced jobs are jobs created by the spending of monies provided as project salaries [or employee payroll] for items such as mortgage payments, groceries, gas entertainment, etc.

The most recent official estimate of the impacts of infrastructure investment on employment was generated by Council of Economic Advisers (CEA) within the Executive Office of the President. In a 2014 DOT statement, the CEA estimated that every \$1 billion in Federal highway and transit investment funded by the American Jobs Act would support 13,000 jobs for one year. This correlates to approximately 2,897 full-time positions, primarily construction craft labor. In addition, preconstruction program expenditures (i.e., engineering and project designs) created another approximately 1,413 full-time positions; primarily engineers. Combined, there were approximately 4,310 direct jobs created by the FASTER program spending during the reporting period. Included within the above number are approximately 41 CDOT FTE's (or full-time equivalents); staff responsible for the day-to-day delivery of the program based upon CDOT payroll records.

## **Resolutions Approved by the Statewide Bridge Enterprise Board**

The following is a brief overview of resolutions passed by the Statewide Bridge Enterprise Board of Directors or significant topics discussed during Q1 FY2015 as itemized in Table 5 below.



**Table 5. Board Resolution / Significant Topics:**

<b>July Board of Directors Meeting (No workshop)</b>
<ul style="list-style-type: none"> <li>▪ Adoption of 1st Budget Supplement for FY2015</li> <li>▪ Approval of Asset Ownership of bridges budgeted with FASTER funding and completed within FY2014 (four bridges).</li> <li>▪ Monthly Progress Report</li> </ul>
<b>August Board of Directors Meeting (No workshop)</b>
<ul style="list-style-type: none"> <li>▪ Adoption of 2nd Budget Supplement for FY2015</li> <li>▪ Presentation of Innovative Stainless Steel Rebar used on SH58 over Ford Street project</li> <li>▪ Monthly Progress Report</li> </ul>
<b>September Board of Directors Meeting (No workshop)</b>
<ul style="list-style-type: none"> <li>▪ Meeting held in Akron, CO (Region 4)</li> </ul>

**Other Significant Achievements**

- Program staff in concert with CDOT F&A continues to tracking bond expenditures as compared to forecasted bond spending and identify factors impacting bond spending. The program is working to confirm projects schedules and budgets to help satisfy bond spending.
- Program staff worked with Bridge Enterprise accountants on Q1 FY2014 Bridge Enterprise maintenance invoice.
- Bridge Enterprise financial manager continues working with region staff and CDOT Admin staff to release budget savings and reallocate bond budget from lower performing projects to higher performing projects in an effort to meet bond spending requirements.
- Continuing effort to track and report on actual expenditures compared with forecasted spending.
- Meet with CDOT Budget staff to discuss development of Bridge Enterprise revenue estimates for FY16 Budget Request.
- Continue to support CDOT’s Public Relations and Government Relations with ongoing updates to the CDOT/Bridge Enterprise website and monthly “dash-board” performance metric updates.
- Refine the list of potential structures that would be good candidates to be programmed for “design and shelve”.
- Provide support to OFMB and program accounting staff on collecting budget supplements from regions, which are presented at the monthly Board of Directors meetings.
- Participated in a Leading/Lagging Performance kickoff meeting.
- Ongoing attendance at State Auditor’s Office meetings and provide support to FASTER Performance Audit activities.
- Support of I-70 East Viaduct project development through attendance of multiple coordination meetings, including the Counsel Selection and Bridge Enterprise Project Issues meetings.
- Provide ongoing updates to the 10-year Plan. For this period, updates included I-70 East Viaduct contributions and impacts.

- Bridge Enterprise submitted a program synopsis and was selected to present at ACEC of Arizona’s 2015 Conference on Roads and Streets next spring.
- Continuance of bi-weekly internal meetings to coordinate upcoming deliverables and ongoing initiatives.
- Coordinated with PMO and directed Bridge Enterprise staff regarding upcoming interim Bridge Enterprise Baseline Schedule Change Request policy change.
- Perform ongoing updates to the program schedule, bar-chart schedule, and list of projects with SPI<0.90, and distribute to CDOT regional RTD’s and program engineers.

## Financial Information

The following is a program overview of financial statistics as of September 30, 2014.

- The program has multiple funding sources including: proceeds from the Build America Bond program, FASTER bridge dollars which is commonly referred to as the statewide pay-go program (collected yearly revenues from vehicle registrations), Bank of America Loan, and Other Funds which are primarily Federal-aid BR funding.
- From program inception (life-to-date), a total of \$704.7M has been budgeted (all funding sources), and Expenditures and Encumbrances are \$420.8M and \$177.6M (all funding sources), respectively. Reference Table 6 below for details by funding source.
- For comparison purposes, the totals from the previous quarterly report (Q4 FY2014) are also reported in the far right column.
- There is currently \$309.0M of bond proceeds and interest earnings available, actual expenditures were \$286.3M with an encumbrance balance of \$18.3M.

**Table 6.** Program Financial Statistics as of (\$ in Millions).

	Build America Bonds 2010 A Proceeds	FASTER Bridge	Bank of America Loan	Other Funds	Total Q1 FY2015	Total Q4 FY2014
<b>Budget</b>	\$309.0	\$323.7	\$40.3	\$31.7	<b>\$704.7</b>	<b>\$704.2</b>
<b>Expenditures</b>	\$286.3	\$66.9	\$39.0	\$28.6	<b>\$420.8</b>	<b>\$405.3</b>
<b>Encumbrances</b>	\$18.3	\$157.5	\$ 0.3	\$ 1.5	<b>\$177.6</b>	<b>\$166.5</b>

The Bridge Enterprise program currently consists of one-hundred-ten bridges, including ninety-three (93) bridges from the Bond program; fifty-six (56) of these bridges are fully funded, and thirty-seven (37) of these bridges are partially funded with current available sources. The estimated total cost for these one-hundred-ten bridges is approximately \$908.6M. Table 7 below provides an itemization of current funding sources for the Bridge Enterprise program.

**Table 7.** Current Allocation Plan (\$ in Millions)

Build America Bonds	FASTER Bridge	Other Funds	Bond Interest	Total
\$298.1	\$529.5	\$71.5	\$9.5	<b>\$908.6</b>

## Economic Outlook

The following are highlights from project bid data results maintained by CDOT's Engineering Estimates and Market Analysis (EEMA) group for transportation related projects advertised during the period.

- There were on average three bidders per project during the period. This is a decrease from 3.16 bidders per project from the previous quarter; and a steady decline from the average of 4.4 bidders reported in the final quarter of last year.
- On average, the low bid on forty-one transportation related projects (bid during the reporting period) was lower than the engineer's estimate by approximately 1%.
- There were five FASTER projects bid during the period (two project bids were combined to one), and the low bid was approximately 2% higher than the engineer's estimate.

The following economic statistics were reported by the Chief Economist from the Associated General Contractors (AGC) of America as reported by AGC's Data DIGest or Press Releases during the quarter. The data provides insight on economic movement associated with the Producer Price Index, Construction Employment and other economic indicators (both state and national) month-to-month or year-over-year (e.g., September 2013 to September 2014).

### Producer Price Index

The Producer Price Index (PPI) for inputs to construction – a weighted average of the cost of all materials used in construction plus items consumed by contractors such as diesel fuel – dipped 0.1% in September; and increased 1.6% year-over-year [September 2013 to September 2014] (Vol. 14, No. 38 Data DIGest).

### Construction Employment

- Construction firms added jobs in 39 states between September 2013 to September 2014; ten states lost construction jobs for the year. Construction employment remained the same in two states year to year. (AGC 10/21/2014 Press Release).
- Construction employment expanded in 236 out of 339 metropolitan areas, declined in 53 and was unchanged in 50 between August 2012 and August 2013. (Vol .14, No. 40 Data DIGest).

### Other

- Construction spending in September totaled \$951 billion at a seasonally adjusted annual rate, down 0.4% from the August total but 2.9% higher than in September 2013. (AGC 11/3/2014 press release)
- Colorado was ranked twenty-third best in the country in the percent of new construction jobs [4,800] gained at 3.7% year-over-year (September 2013 to September 2014) as reported by the AGC from the Bureau of Labor Statistics and U.S. Department of Labor.
- The Denver-Aurora-Broomfield, CO metropolitan area was ranked 150th out of 339 metropolitan areas in the percent of new construction jobs [3,100] gained at 4% year-over-year (September 2013 to September 2014).

- There is no new update to the National Highway Construction Cost Index (NHCCI) since the previous quarterly report.

Association officials said the new employment figures show that the industry continues to add new workers after its years-long downturn. But they cautioned that more and more firms are reporting labor shortages. Many firms are worried about their ability to find, recruit and retain qualified workers as the industry continues to rebound (AGC 10/21 Press Release). Construction spending declined in August and September; although construction employment increased in 70% of surveyed metropolitan areas. Employment gains have become more widespread but are still spotty and can be highly localized.

The monthly declines in construction spending add new challenges to an industry struggling to recover from a years-long downturn and coping with growing labor shortages amid demographic and economic shifts. Association officials said Washington officials could help by enacting long-term infrastructure measures and taking steps to make it easier for schools, associations and businesses to prepare future construction workers (AGC 10/29 Press Release).

Current List of Completed Bridges  
Q1-FY2015

2013 Region	Original Bridge Number	New Bridge Number	County	Facility Carried over Featured Intersection	Work Completed
1	E-16-FP	E-16-YF	ADAMS	80TH AVE over US 36 ML	Construction Complete
1	E-16-GQ	E-16-YD	ADAMS	SPUR; N of JCT I 76 in WHEATRIDGE	Construction Complete
1	E-17-AR	E-17-ADR	ADAMS	SH 7 ML over SOUTH PLATTE RIVER	Construction Complete
1	E-17-DM	E-17-ADL	ADAMS	I 76 ML WBND over UP RR	Construction Complete
1	E-17-DN	E-17-ADL	ADAMS	I 76 ML EBND over UP RR	Construction Complete
1	E-17-EX	E-17-GF	ADAMS	PEORIA STREET over I 76 ML; NE of JCT US 85	Construction Complete
1	E-17-EZ	E-17-ACR	ADAMS	84TH AVE over I 25 ML	Construction Complete
1	E-17-GL	E-17-AET	ADAMS	I 76 ML WBND over SOUTH PLATTE RIVER; NE of JCT I 270	Construction Complete
1	E-17-GM	E-17-AET	ADAMS	I 76 ML EBND over SOUTH PLATTE RIVER; NE of JCT I 270	Construction Complete
1	E-17-HG	E-17-ADP	ADAMS	104TH AVE over I 25 ML	Construction Complete
1	E-17-HL	E-17-AEA	ADAMS	I 76 ML EBND over SH 224 ML	Construction Complete
1	F-16-F	F-16-FA	ARAPAHOE	US 85(SANTA FE) ML NBND over DAD CLARK GULCH; in LITTLETON	Construction Complete
1	F-16-FY	F-16-YG	ARAPAHOE	US 285 ML SBND over SH 88 ML	Construction Complete
1	F-16-FZ	F-16-YH	ARAPAHOE	US 285 ML NBND over SH 88 ML	Construction Complete
1	F-19-B	F-19-BL	ARAPAHOE	US 36 ML over COMANCHE CREEK; E of STRASBURG	Construction Complete
1	E-16-FK	E-16-YB	BROOMFIELD	SH 121 ML SBND-WADSWORTH PKWY over US 36 ML (DENVER/BOULDER TNPK)	Construction Complete
1	E-16-FL	E-16-YC	BROOMFIELD	CNTY RD / OLD WADS over US 36 ML (DENVER/BOULDER TNPK); SE of SH 121	Construction Complete
1	F-14-B	F-14-AZ	CLEAR CREEK	I 70 FRONTAGE RD over CLEAR CREEK (SR); W IDAHO SPRINGS	Construction Complete
1	E-16-FW	E-16-YQ E-16-YZ(ped bridge)	DENVER	PECOS STREET over I 70 ML; in DENVER	Construction Complete
1	E-17-BY	E-17-AER	DENVER	I 70 ML EBND over SAND CREEK; E of QUEBEC ST	Construction Complete
1	E-17-GE	E-17-AER	DENVER	I 70 ML WBND over SAND CREEK; E of QUEBEC ST	Construction Complete
1	F-16-BM	F-16-XK	DENVER	SH 88 ML over RR, LAKEWOOD GULCH	Construction Complete
1	F-16-DP	F-16-XB	DENVER	I 25 ML over RDWY,RR, SOUTH PLATTE RIVER; BRONCO BRIDGE	Construction Complete
1	F-16-DT	F-16-XS	DENVER	I 25 ML NBND over US 85 ML (SANTA FE)	Construction Complete
1	F-16-DW	F-16-XS	DENVER	I 25 ML SBND over US 85 ML (SANTA FE)	Construction Complete
1	F-16-FW	F-16-YQ	DENVER	US 287+SH 88 (FEDERAL) over US 40 ML (COLFAX)	Construction Complete
1	F-16-OG	Rehab, no new number	DENVER	RAMP to I 25 NBND over US 6 ML	Construction Complete
1	F-17-AE	F-17-WP	DENVER	SH 30 ML/HAVANA ST over CHERRY CREEK	Construction Complete

Current List of Completed Bridges  
Q1-FY2015

2013 Region	Original Bridge Number	New Bridge Number	County	Facility Carried over Featured Intersection	Work Completed
1	G-16-B	G-16-E	DOUGLAS	US 85 ML over DRAW; COOK RANCH to LOUVIERS	Construction Complete
1	G-16-C	G-16-F	DOUGLAS	US 85 ML over DRAW; COOK RANCH to LOUVIERS	Construction Complete
1	E-16-FX	E-16-XR	JEFFERSON	WASHINGTON STREET over SH 58 ML	Construction Complete
1	E-16-HA	E-16-HG	JEFFERSON	SH 58 ML over FORD STREET, WASH	Construction Complete
1	E-16-HI	E-16-XQ	JEFFERSON	SH 58 ML over CO.RD,RR SPUR	Construction Complete
1	F-16-AM	F-16-WI	JEFFERSON	US 285 ML SBND over SH 121 ML	Construction Complete
1	F-16-AY	F-16-WI	JEFFERSON	US 285 ML NBND over SH 121 ML	Construction Complete
1	F-16-CS	F-16-YR	JEFFERSON	SH121 ML-WADSWORTH over BEAR CREEK; N OF 285	Construction Complete
1	F-16-FL	F-16-XQ	JEFFERSON	US 6 ML over SH 95 ML/SHERIDAN AVE.	Construction Complete
1	F-16-I	F-16-YK	JEFFERSON	US 285 ML SBND over PIERCE STREET	Construction Complete
2	O-25-H	O-25-AA	BACA	US 160 ML over N FK SAND ARROYO; SW of PRITCHETT	Construction Complete
2	O-25-I	O-25-AB	BACA	US 160 ML over DRAW; W of PRITCHETT	Construction Complete
2	O-26-L	160C461737BR 160C461739BR	BACA	US 160 ML over CAT CREEK; W of SPRINGFIELD	Construction Complete
2	L-24-F	Rehab, no new number	BENT	SH 101 ML over PURGATOIRE RIVER; S of LAS ANIMAS	Construction Complete
2	M-24-B	M-24-K	BENT	SH 101 ML over DRAW; S of LAS ANIMAS and JCT US 50	Construction Complete
2	L-21-U	096B103590BL	CROWLEY	SH 96 ML over NUMA DRAIN CANAL	Construction Complete
2	L-22-F	L-22-CJ	CROWLEY	SH 96 ML over BLACK DRAW	Construction Complete
2	H-17-M	Rehab, no new number	EL PASO	I 25 ML over DRAW	Construction Complete
2	H-18-A	H-18-AD	EL PASO	US 24 ML over BLACK SQUIRREL CREEK; W of PEYTON	Construction Complete
2	I-17-AE	Rehab, no new number	EL PASO	US 24 ML EBND over FOUNTAIN CREEK	Construction Complete
2	I-18-G	I-18-BQ	EL PASO	US 24 ML over DRAW; E of FALCON	Construction Complete
2	J-18-S	025A122850NL	EL PASO	I 25 ML NBND over DRAW; S of FOUNTAIN	Construction Complete
2	J-18-T	025A122564NL	EL PASO	I 25 ML NBND over DRAW; S of FOUNTAIN	Construction Complete
2	J-15-B	J-15-F	FREMONT	SH 9 ML over CURRANT CREEK; NW of JCT US 50	Construction Complete
2	K-16-K	K-16-AL	FREMONT	SH 120 ML over RR, ARKANSAS RIVER; E of PORTLAND	Construction Complete
2	K-16-Q	K-16-AM	FREMONT	SH 120 ML over HARDSCRABBLE CREEK	Construction Complete
2	K-16-W	K-16-F	FREMONT	SH 67 ML over DRAW	Construction Complete
2	N-16-L	N-16-Q	HUERFANO	SH 69 ML over TURKEY CREEK	Construction Complete

Current List of Completed Bridges  
Q1-FY2015

2013 Region	Original Bridge Number	New Bridge Number	County	Facility Carried over Featured Intersection	Work Completed
2	N-17-C	N-17-BV	HUERFANO	I 25 BUS RT over SULL CREEK; Near WALSENBURG	Construction Complete
2	N-17-N	N-17-BU	HUERFANO	I 25 ML NBND over MISSOURI CREEK	Construction Complete
2	O-16-A	O-16-C	HUERFANO	SH 12 ML over CUCHARAS RIVER; S of LA VETA	Construction Complete
2	K-23-B	K-23-X	KIOWA	SH 96 ML over DRAW	Construction Complete
2	K-23-C	K-23-W	KIOWA	SH 96 ML over DRAW	Construction Complete
2	K-24-A	K-24-B	KIOWA	SH 96 ML over DRAW	Construction Complete
2	O-19-H	O-19-R	LAS ANIMAS	US 350 ML over PURGATOIRE RIVER; NE of JCT US 160	Construction Complete
2	O-19-J	O-19-AH	LAS ANIMAS	US 350 ML over DRAW; S of MODEL	Construction Complete
2	P-17-H	P-17-AG	LAS ANIMAS	SH 12 ML over PURGATOIRE RIVER; NW of WESTON	Construction Complete
2	P-18-B	P-18-BK	LAS ANIMAS	I 25 ML NBND over PURGATOIRE RIVER	Construction Complete
2	P-18-S	P-18-BL	LAS ANIMAS	I 25 ML SBND over PURGATOIRE RIVER	Construction Complete
2	P-19-AD	P-19-AV	LAS ANIMAS	SH 239(CO RD 75) ML over IRRIGATION CANAL; in TRINIDAD	Construction Complete
2	L-22-E	L-22-CM	OTERO	SH 266 ML over FT LYON STORAGE CANAL; NE of ROCKY FORD	Construction Complete
2	L-22-K	L-22-CO	OTERO	SH 71 ML over FT LYON CANAL; NW of ROCKY FORD	Construction Complete
2	L-22-O	L-22-CN	OTERO	SH 266 ML over HOLBROOK CANAL; NE of ROCKY FORD	Construction Complete
2	M-21-D	M-21-F	OTERO	US 350 ML over DRAW; SW of LA JUNTA & TIMPAS	Construction Complete
2	G-12-L	Rehab, no new number	PARK	SH 9 ML over BUCKSKIN GULCH; in ALMA	Construction Complete
2	L-28-F	L-28-H	PROWERS	SH 89 ML over ARKANSAS RIVER; S of HOLLY	Construction Complete
2	K-18-Z	K-18-GS & K-18-GT	PUEBLO	SH 96 ML over RDWY, RR, ARKANSAS RIVER	Construction Complete
2	L-19-C	L-19-Y	PUEBLO	US 50 BUS RT WBND over ST CHARLES RIVER	Construction Complete
2	M-17-R	Rehab, no new number	PUEBLO	I 25 ML over DRAW	Construction Complete
2	M-20-A	M-20-D	PUEBLO	SH 10 ML over SAUNDERS ARROYO	Construction Complete
2	H-16-K	H-16-N	TELLER	SH 67 ML over DRAW	Construction Complete
2	I-15-Y	Rehab, no new number	TELLER	US 24 ML over TWIN CREEK	Construction Complete
3	F-08-F	F-08-AJ	EAGLE	I 70 SERVICE RD over COLORADO RIVER (SR); N. of DOTSERO INT.	Construction Complete
3	F-09-H	F-09-AS	EAGLE	US 6 ML over EAGLE RIVER; E of EAGLE	Construction Complete
3	J-09-C	Rehab, no new number	GUNNISON	US 50 SERVICE RD over GUNNISON RVR OVERFLOW (SR); W. SIDE of GUNNISON	Construction Complete
3	J-09-D	Rehab, no new number	GUNNISON	US 50 SVC RD over GUNNISON RVR (SR); W. SIDE of GUNNISON	Construction Complete

Current List of Completed Bridges  
Q1-FY2015

2013 Region	Original Bridge Number	New Bridge Number	County	Facility Carried over Featured Intersection	Work Completed
3	J-09-G	J-09-F	GUNNISON	SH 114 ML over TOMICHI CREEK	Construction Complete
3	G-11-F	G-11-G	LAKE	US 24 ML over UP RR	Construction Complete
3	H-11-D	H-11-AC	LAKE	US 24 ML over CALIFORNIA GULCH	Construction Complete
3	H-11-F	024A178974BR	LAKE	US 24 ML over CALIFORNIA GULCH	Construction Complete
3	H-09-B	Rehab, no new number	PITKIN	SH 82 ML over CO RD, CASTLE CREEK	Construction Complete
3	C-09-C	C-09-AU	ROUTT	US 40 ML over E FORK ELK RIVER; W of STEAMBOAT SPGS	Construction Complete
4	G-21-B	G-21-AP	ELBERT	I 70 FRONTAGE RD over DRAW (SR)	Construction Complete
4	B-16-AE	B-16-AJ	LARIMER	US 287 ML over DRAW; N of JCT SH 1	Construction Complete
4	C-15-I	C-15-AL	LARIMER	US 34 ML over BIG THOMPSON RIVER	Construction Complete
4	C-15-J	C-15-AM	LARIMER	US 34 ML over BIG THOMPSON RIVER	Construction Complete
4	G-22-J	G-22-CD	LINCOLN	US 24 ML over DRAW; E of LIMON	Construction Complete
4	A-24-C A-26-F	minor structure 138A014381B minor structure 138A041940B	LOGAN SEDGWICK	US 138 ML over DITCH/DRAW	Construction Complete
4	B-17-C	B-17-DF	WELD	US 85 ML(NUNN BRIDGE) over UPRR	Construction Complete
4	B-17-L	B-17-BU	WELD	SH 14 ML over COALBANK CREEK; W of AULT	Construction Complete
4	C-17-BN	C-17-FS	WELD	I 25 SERVICE RD over LITTLE THOMPSON RIVER; S of JCT SH 56	Construction Complete
4	D-17-AK	D-17-FK	WELD	SH 66 ML over ST VRRAIN RIVER; W of PLATTEVILLE	Construction Complete
4	D-28-B	D-28-U	YUMA	US 34 ML over N FK REPUBLICAN RIVER; W of LAIRD	Construction Complete
5	O-05-AQ	Rehab, no new number	LA PLATA	US 160 ML over ANIMAS RIVER	Construction Complete
5	L-05-B	L-05-E	OURAY	SH 62 ML over UNCOMPAHGRE RIVER; SHERMAN ST in RIDGWAY	Construction Complete
5	L-06-A	L-06-B	OURAY	US 550 ML over BEAR CREEK	Construction Complete
5	M-06-K	M-06-L	SAN JUAN	US 550 ML over MINERAL CREEK	Construction Complete
5	L-04-B	L-04-H	SAN MIGUEL	SH 145 ML over LEOPARD CREEK; JCT SH 62 - PLACERVILLE	Construction Complete



## List of FASTER-Eligible Bridges

Q1-FY2015

2013 Region	Original Bridge No.	County	Facility Carried over Featured Intersection	Budget	Status	Construction Start Date	Construction Complete Date	Project Delivery Method
1	E-16-AA	ADAMS	US 287 ML over BNSF RR SPUR; at 69TH AVE	\$ 18,156,635	In Design	02/20/15	08/30/16	D-B-B
1	E-16-FP	ADAMS	80TH AVE over US 36 ML	\$ 11,359,268	Construction Complete	05/06/10	10/20/11	Construction Complete
1	E-16-GQ	ADAMS	SH 95 ML (SHERIDAN BLVD) over UP RR, RR SPUR; N of JCT I 76 in WHEATRIDGE	\$ 6,989,679	Construction Complete	04/24/12	11/01/13	Construction Complete
1	E-17-AR	ADAMS	SH 7 ML over SOUTH PLATTE RIVER	\$ -	Construction Complete	05/19/09	01/07/11	Construction Complete
1	E-17-DM	ADAMS	I 76 ML WBND over UP RR	\$ 6,750,000	Construction Complete			Construction Complete
1	E-17-DN	ADAMS	I 76 ML EBND over UP RR	\$ -	Construction Complete			Construction Complete
1	E-17-EX	ADAMS	PEORIA STREET over I 76 ML; NE of JCT US 85	\$ 5,927,917	Construction Complete	07/24/13	12/05/13	Construction Complete
1	E-17-EZ	ADAMS	84TH AVE over I 25 ML	\$ 11,949,236	Construction Complete	02/24/11	10/31/12	Construction Complete
1	E-17-GL	ADAMS	I 76 ML WBND over SOUTH PLATTE RIVER; NE of JCT I 270	See E-17-GM	Construction Complete	09/12/11	07/23/12	Construction Complete
1	E-17-GM	ADAMS	I 76 ML EBND over SOUTH PLATTE RIVER; NE of JCT I 270	\$ 13,123,686	Construction Complete	09/12/11	07/23/12	Construction Complete
1	E-17-HG	ADAMS	104TH AVE over I 25 ML	\$ 8,536,596	Construction Complete	05/21/09	12/20/10	Construction Complete
1	E-17-CA	ADAMS	SH 44 ML(104TH AVE) over SOUTH PLATTE RIVER; W of JCT US 85	See E-17-ER	In Construction	01/06/14	06/30/15	D-B-B
1	E-17-DC	ADAMS	I 76 ML EBND over UP RR; E of JCT US 85	\$ 17,856,815	In Construction	08/04/14	09/15/15	D-B-B
1	E-17-HL	ADAMS	I 76 ML EBND over SH 224 ML	\$ -	Construction Complete			Construction Complete
1	E-17-DU	ADAMS	I 76 ML WBND over UP RR; E of JCT US 85	See E-17-DC	In Construction	08/04/14	09/15/15	D-B-B
1	E-17-EP	ADAMS	SH6 DITCH RIDER RD over BURLINGTON CANAL SR	\$ -	No Action Proposed			
1	E-17-ER	ADAMS	SH 44 ML(104TH AVE) over BULL SEEP; W of US 85	\$ 13,700,609	In Construction	01/06/14	06/30/15	D-B-B
1	E-17-IC	ADAMS	YORK STREET over I 270 ML	\$ -	Not Programmed			
1	F-19-AF	ADAMS	COUNTY ROAD over I 70 ML	\$ -	Not Programmed			
1	F-16-F	ARAPAHOE	US 85(SANTA FE) ML NBND over DAD CLARK GULCH; in LITTLETON	\$ 3,031,094	Construction Complete	11/27/12	09/05/13	Construction Complete
1	F-16-FY	ARAPAHOE	US 285 ML SBND over SH 88 ML	\$ -	Construction Complete	08/31/10	07/31/11	Construction Complete
1	F-16-FZ	ARAPAHOE	US 285 ML NBND over SH 88 ML	\$ -	Construction Complete	08/31/10	07/31/11	Construction Complete
1	F-19-B	ARAPAHOE	US 36 ML over COMANCHE CREEK; E of STRASBURG	\$ 1,862,584	Construction Complete	04/23/12	06/15/12	Construction Complete
1	F-17-BS	ARAPAHOE	US 40 ML(E COLFAX) WBND over SAND CREEK; E of I-225	See F-17-F	In Construction	07/23/13	12/22/14	D-B-B
1	F-17-DM	ARAPAHOE	SH 88 ML/ARAP RD over CHERRY CREEK; W OF SH 83(PARKER RD)	\$ 30,132,015	In Construction	10/21/13	05/01/15	D-B-B
1	F-17-F	ARAPAHOE	US 40 ML(E COLFAX) EBND over SAND CREEK; E of I-225	\$ 10,612,947	In Construction	07/23/13	12/22/14	D-B-B
1	F-17-GA	ARAPAHOE	US 40 ML(E COLFAX) WBND over TOLLGATE CREEK; W of I-225	See F-17-GO	In Construction	06/01/14	01/31/16	D-B-B

## List of FASTER-Eligible Bridges

Q1-FY2015

2013 Region	Original Bridge No.	County	Facility Carried over Featured Intersection	Budget	Status	Construction Start Date	Construction Complete Date	Project Delivery Method
1	F-17-GO	ARAPAHOE	US 40 ML(E COLFAX) EBND over TOLLGATE CREEK; W of I-225	\$ 14,347,684	In Construction	06/09/14	01/31/16	D-B-B
1	F-19-F	ARAPAHOE	US 36 ML over DRAW	\$ -	Not Programmed			
1	E-16-FK	BROOMFIELD	SH 121 ML SBND- WADSWORTH PKWY over US 36 ML (DENVER/BOULDER TNPK)	\$ 28,151,957	Construction Complete	05/10/12	10/30/13	Construction Complete
1	E-16-FL	BROOMFIELD	CNTY RD / OLD WADS over US 36 ML (DENVER/BOULDER TNPK); SE of JCT SH 121	\$ 13,355,054	Construction Complete	05/10/12	10/30/13	Construction Complete
1	F-14-Y	CLEAR CREEK	I 70(BUSINESS RT) over I 70 ML	\$ 3,900,000	In Design	04/01/15	10/30/15	CMGC
1	F-15-BL	CLEAR CREEK	I 70 ML WBND over US 6, CLEAR CREEK	\$ 10,900,000	No Action Proposed			
1	F-15-D	CLEAR CREEK	I 70 FRONTAGE RD over CLEAR CREEK (SR)	\$ 275,000	No Action Proposed			
1	F-14-B	CLEAR CREEK	I 70 FRONTAGE RD over CLEAR CREEK (SR); W IDAHO SPRINGS	\$ 1,923,453	Construction Complete	07/19/10	11/23/10	Construction Complete
1	E-17-AH	DENVER	ON 40TH AVE W of SH 2 ML over BNSF RR	\$ -	No Action Proposed			Transfer out of CBE
1	E-17-DF	DENVER	I 70 ML WBND over UP RR W of QUEBEC STREET	\$ -	Not Programmed			
1	E-17-EW	DENVER	I 70 ML EBND over UP RR; W of QUEBEC STREET	\$ -	Not Programmed			Not Programmed
1	E-17-FX	DENVER	I 70 ML over US 6, RR, CITY ST	\$ 39,500,000	In Design			Design Phase
1	E-17-JP	DENVER	I 70 ML over HAVANA ST, UP RR	\$ 34,823,400	In Design	12/01/14	05/15/16	D/B
1	E-17-KR	DENVER	I 270 ML EBND over I 70 ML	\$ -	Not Programmed			
1	E-16-FW	DENVER	PECOS STREET over I 70 ML; in DENVER	\$ 25,504,108	Construction Complete	11/05/12	10/01/13	Construction Complete
1	E-17-BY	DENVER	I 70 ML EBND over SAND CREEK; E of QUEBEC ST	See E-17-GE	Construction Complete	07/29/11	07/06/12	Construction Complete
1	F-16-EF	DENVER	US 6 ML over SOUTH PLATTE RIVER; W SIDE of I-25	See F-16-EN	In Construction	01/15/14	09/30/15	D/B
1	F-16-EJ	DENVER	US 6 ML over BNSF RR; E SIDE OF I-25	\$ 14,144,166	In Construction	06/30/13	09/30/15	D/B
1	F-16-EN	DENVER	US 6 ML over BRYANT STREET; W SIDE OF I-25	\$ 36,433,142	In Construction	06/30/13	09/30/15	D/B
1	E-17-GE	DENVER	I 70 ML WBND over SAND CREEK; E of QUEBEC ST	\$ 10,773,656	Construction Complete	07/29/11	07/06/12	Construction Complete
1	F-16-BM	DENVER	SH 88 ML over RR, LAKEWOOD GULCH	\$ 6,000,000	Construction Complete			Construction Complete
1	F-16-DP	DENVER	I 25 ML over RDWY,RR, SOUTH PLATTE RVR; BRONCO BRIDGE	\$ 24,359,991	Construction Complete	05/02/11	07/11/13	Construction Complete
1	F-16-DT	DENVER	I 25 ML NBND over US 85 ML (SANTA FE)	\$ 17,921,726	Construction Complete	07/11/11	09/19/13	Construction Complete
1	F-16-DW	DENVER	I 25 ML SBND over US 85 ML (SANTA FE)	See F-16-DT	Construction Complete	07/11/11	09/19/13	Construction Complete
1	F-16-GG	DENVER	PERRY STREET over US 6 ML; W of FEDERAL	\$ -	No Action Proposed			Transfer out of CBE
1	F-16-FW	DENVER	US 287+SH 88 (FEDERAL) over US 40 ML (COLFAX)	\$ 7,919,733	Construction Complete	09/26/11	01/16/13	Construction Complete
1	F-16-OG	DENVER	RAMP to I 25 NBND over US 6 ML	\$ -	Construction Complete		12/20/12	Construction Complete
1	F-17-AE	DENVER	SH 30 ML/HAVANA ST over CHERRY CREEK	\$ 5,778,918	Construction Complete	02/07/11	06/15/12	Construction Complete
1	G-16-B	DOUGLAS	US 85 ML over DRAW; COOK RANCH to LOUVIERS	\$ 3,191,328	Construction Complete	10/19/12	11/15/13	Construction Complete
1	G-16-C	DOUGLAS	US 85 ML over DRAW; COOK RANCH to LOUVIERS	\$ -	Construction Complete	10/19/12	11/15/13	Construction Complete
1	G-17-A	DOUGLAS	US 85 ML over SAND CREEK	\$ 487,800	In Design			D-B-B
1	F-16-ER	JEFFERSON	US 6 ML over Garrison Street (Lakewood)	\$ 16,720,900	In Design	12/21/14	10/31/15	Streamlined D/B

## List of FASTER-Eligible Bridges

Q1-FY2015

2013 Region	Original Bridge No.	County	Facility Carried over Featured Intersection	Budget	Status	Construction Start Date	Construction Complete Date	Project Delivery Method
1	E-16-FX	JEFFERSON	WASHINGTON STREET over SH 58 ML	\$ -	Construction Complete	02/20/08	11/02/09	Construction Complete
1	E-16-HA	JEFFERSON	SH 58 ML over FORD STREET, WASH	\$ 6,654,378	Construction Complete	06/04/13	06/27/14	Construction Complete
1	E-16-HI	JEFFERSON	SH 58 ML over CO.RD,RR SPUR	\$ -	Construction Complete			Construction Complete
1	F-16-AM	JEFFERSON	US 285 ML SBND over SH 121 ML	\$ 47,395,760	Construction Complete	08/31/10	07/31/11	Construction Complete
1	F-16-AY	JEFFERSON	US 285 ML NBND over SH 121 ML	\$ -	Construction Complete	08/31/10	07/31/11	Construction Complete
1	F-16-CS	JEFFERSON	SH121 ML-WADSWORTH over BEAR CREEK; N OF 285	\$ 10,116,162	Construction Complete	03/26/12	08/30/13	Construction Complete
1	F-16-FL	JEFFERSON	US 6 ML over SH 95 ML/SHERIDAN AVE.	\$ 13,548,993	Construction Complete	01/03/12	07/12/13	Construction Complete
1	F-16-I	JEFFERSON	US 285 ML SBND over PIERCE STREET	\$ -	Construction Complete	08/31/10	07/31/11	Construction Complete
2	O-25-H	BACA	US 160 ML over N FK SAND ARROYO; SW of PRITCHETT	\$ -	Construction Complete	03/29/12	12/13/12	Construction Complete
2	O-25-I	BACA	US 160 ML over DRAW; W of PRITCHETT	\$ -	Construction Complete	03/29/12	12/13/12	Construction Complete
2	O-26-L	BACA	US 160 ML over CAT CREEK; W of SPRINGFIELD	\$ 3,957,457	Construction Complete	03/29/12	12/13/12	Construction Complete
2	L-24-F	BENT	SH 101 ML over PURGATOIRE RIVER; S of LAS ANIMAS	See M-24-B	Construction Complete	03/29/12	10/31/12	Construction Complete
2	M-24-B	BENT	SH 101 ML over DRAW; S of LAS ANIMAS and JCT US 50	\$ 4,000,391	Construction Complete	03/29/12	10/31/12	Construction Complete
2	L-21-U	CROWLEY	SH 96 ML over NUMA DRAIN CANAL	\$ -	Construction Complete			Construction Complete
2	L-22-F	CROWLEY	SH 96 ML over BLACK DRAW	\$ -	Construction Complete	08/18/10	09/21/11	Construction Complete
2	H-17-M	EL PASO	I 25 ML over DRAW	\$ -	Construction Complete	03/01/13	06/01/14	Construction Complete
2	H-18-A	EL PASO	US 24 ML over BLACK SQUIRREL CREEK; W of PEYTON	\$ 3,282,627	Construction Complete	11/15/11	08/17/12	Construction Complete
2	I-17-AE	EL PASO	US 24 ML EBND over FOUNTAIN CREEK	\$ -	Construction Complete	08/04/10	10/21/10	Construction Complete
2	I-18-G	EL PASO	US 24 ML over DRAW; E of FALCON	\$ -	Construction Complete			Construction Complete
2	J-18-S	EL PASO	I 25 ML NBND over DRAW; S of FOUNTAIN	\$ 1,150,693	Construction Complete	02/20/12	08/17/12	Construction Complete
2	I-17-O	EL PASO	I 25 SERVICE RD over PINE CREEK; S of JCT SH 56	\$ 168,126	No Action Proposed			D-B-B
2	J-18-T	EL PASO	I 25 ML NBND over DRAW; S of FOUNTAIN	See J-18-S	Construction Complete	02/20/12	08/17/12	Construction Complete
2	J-15-B	FREMONT	SH 9 ML over CURRANT CREEK; NW of JCT US 50	\$ 1,856,602	Construction Complete	05/04/11	10/31/11	Construction Complete
2	K-16-K	FREMONT	SH 120 ML over RR, ARKANSAS RIVER; E of PORTLAND	\$ 6,135,195	Construction Complete	10/08/12	06/27/14	Construction Complete
2	K-14-B	FREMONT	US 50 ML over OAK CREEK	\$ 500,000	Not Programmed			D-B-B
2	K-14-J	FREMONT	US 50 ML over DRAW, btwn TEXAS CREEK & COTOPAXI	\$ 2,101,360	Design Completed	03/01/15	07/16/15	D-B-B
2	K-16-Q	FREMONT	SH 120 ML over HARDCRABBLE CREEK	\$ -	Construction Complete			Construction Complete
2	K-16-W	FREMONT	SH 67 ML over DRAW	\$ -	Construction Complete		09/30/13	Construction Complete
2	K-16-S	FREMONT	SH 120 ML over DRAW, UP RR; E of FLORENCE	\$ 5,838,900	Design Completed	10/21/14	11/20/15	D-B-B
2	N-16-L	HUERFANO	SH 69 ML over TURKEY CREEK	\$ 2,474,988	Construction Complete	06/22/11	07/15/11	Construction Complete
2	N-17-C	HUERFANO	I 25 BUS RT over SULL CREEK; Near WALSENBURG	\$ 2,866,513	Construction Complete	02/17/14	09/03/14	Construction Complete

## List of FASTER-Eligible Bridges

Q1-FY2015

2013 Region	Original Bridge No.	County	Facility Carried over Featured Intersection	Budget	Status	Construction Start Date	Construction Complete Date	Project Delivery Method
2	N-17-N	HUERFANO	I 25 ML NBND over MISSOURI CREEK	\$ 2,521,902	Construction Complete	01/27/11	09/01/11	Construction Complete
2	O-16-A	HUERFANO	SH 12 ML over CUCHARAS RIVER; S of LA VETA	See P-17-H	Construction Complete	02/19/12	11/15/12	Construction Complete
2	M-16-P	HUERFANO	SH 69 ML over MILLIGAN ARROYO; Near GARDNER	\$ 497,000	In Design			D-B-B
2	N-17-AD	HUERFANO	I 25 ML SBND over US 160 ML, RR SPUR	\$ 8,800,000	No Action Proposed			
2	N-17-BN	HUERFANO	I 25 ML SBND over CO RD 640, BUTTE CREEK		Not Programmed			
2	N-17-S	HUERFANO	I 25 ML NBND over CO RD 103, BUTTE CREEK	\$ -	Not Programmed			
2	K-23-B	KIOWA	SH 96 ML over DRAW	\$ 2,283,354	Construction Complete	08/18/10	09/21/11	Construction Complete
2	K-23-C	KIOWA	SH 96 ML over DRAW	\$ -	Construction Complete	08/18/10	09/21/11	Construction Complete
2	K-24-A	KIOWA	SH 96 ML over DRAW	\$ -	Construction Complete	08/18/10	09/21/11	Construction Complete
2	O-19-H	LAS ANIMAS	US 350 ML over PURGATOIRE RIVER; NE of JCT US 160	\$ 4,033,137	Construction Complete	04/29/13	04/11/14	Construction Complete
2	O-19-J	LAS ANIMAS	US 350 ML over DRAW; S of MODEL	\$ 2,405,062	Construction Complete	12/03/12	06/18/13	Construction Complete
2	P-17-H	LAS ANIMAS	SH 12 ML over PURGATOIRE RIVER; NW of WESTON	\$ 2,283,354	Construction Complete	02/19/12	11/15/12	Construction Complete
2	P-18-B	LAS ANIMAS	I 25 ML NBND over PURGATOIRE RIVER	\$ -	Construction Complete			Construction Complete
2	P-18-S	LAS ANIMAS	I 25 ML SBND over PURGATOIRE RIVER	\$ -	Construction Complete	12/01/06		Construction Complete
2	P-23-A_MINOR	LAS ANIMAS	US 160 ML over SMITH CANYON TRIBUTARY; Near KIM, CO	\$ 2,267,700	Design Completed	08/01/15	10/31/15	D-B-B
2	P-19-AD	LAS ANIMAS	SH 239(CO RD 75) ML over IRRIGATION CANAL; in TRINIDAD	See O-19-J	Construction Complete	12/03/12	06/18/13	Construction Complete
2	L-22-L	OTERO	SH 71 ML over ARKANSAS RIVER	\$ -	Not Programmed			
2	L-22-E	OTERO	SH 266 ML over FT LYON STORAGE CANAL; NE of ROCKY FORD	See L-22-O	Construction Complete	08/20/12	03/07/13	Construction Complete
2	L-22-K	OTERO	SH 71 ML over FT LYON CANAL; NW of ROCKY FORD	See L-22-O	Construction Complete	08/20/12	03/07/13	Construction Complete
2	L-22-O	OTERO	SH 266 ML over HOLBROOK CANAL; NE of ROCKY FORD	\$ 8,368,926	Construction Complete	08/20/12	03/07/13	Construction Complete
2	M-21-D	OTERO	US 350 ML over DRAW; SW of LA JUNTA & TIMPAS	\$ 1,959,159	Construction Complete	10/19/11	05/18/12	Construction Complete
2	G-12-C	PARK	SH 9 ML over PLATTE GULCH	\$ -	Not Programmed			
2	G-12-L	PARK	SH 9 ML over BUCKSKIN GULCH; in ALMA	\$ 322,466	Construction Complete	9/5/11	12/29/11	Construction Complete
2	L-27-S	PROWERS	US 50 ML over Draw, E of Lamar	See L-28-C	Design Completed	10/13/14	10/13/15	D-B-B
2	L-28-C	PROWERS	US 50 ML over BNSF RR, E of Granada	\$ 8,308,887	Design Completed	10/13/14	10/13/15	D-B-B
2	L-28-F	PROWERS	SH 89 ML over ARKANSAS RIVER; S of HOLLY	\$ 6,369,958	Construction Complete	02/16/11	12/01/11	Construction Complete
2	K-17-F	PUEBLO	SH 96 ML over RUSH CREEK	\$ -	Not Programmed			
2	K-18-AX	PUEBLO	I 25 ML NBND over US 50 BUS. RTE.	\$ 2,561,500	In Design	03/01/15	09/01/15	D/B
2	K-18-CK	PUEBLO	I 25 ML NBND over NP RR, ILEX ST, BENNET ST; N of JCT SH 50 E	See K-18-CL	In Design	05/01/15	10/01/16	D/B
2	K-18-CL	PUEBLO	I 25 ML SBND over NP RR, ILEX ST, BENNET ST; S of JCT SH 96	\$ 46,693,055	In Design	05/01/15	10/01/16	D/B
2	K-18-R	PUEBLO	US 50 BUS EBND over ARKANSAS RIVER	\$ 1,684,583	In Design	03/01/15	09/01/15	D/B
2	L-18-AQ	PUEBLO	NORTHERN AVE over I 25 ML	\$ 2,903,700	In Design	03/01/15	09/01/15	D/B

## List of FASTER-Eligible Bridges

Q1-FY2015

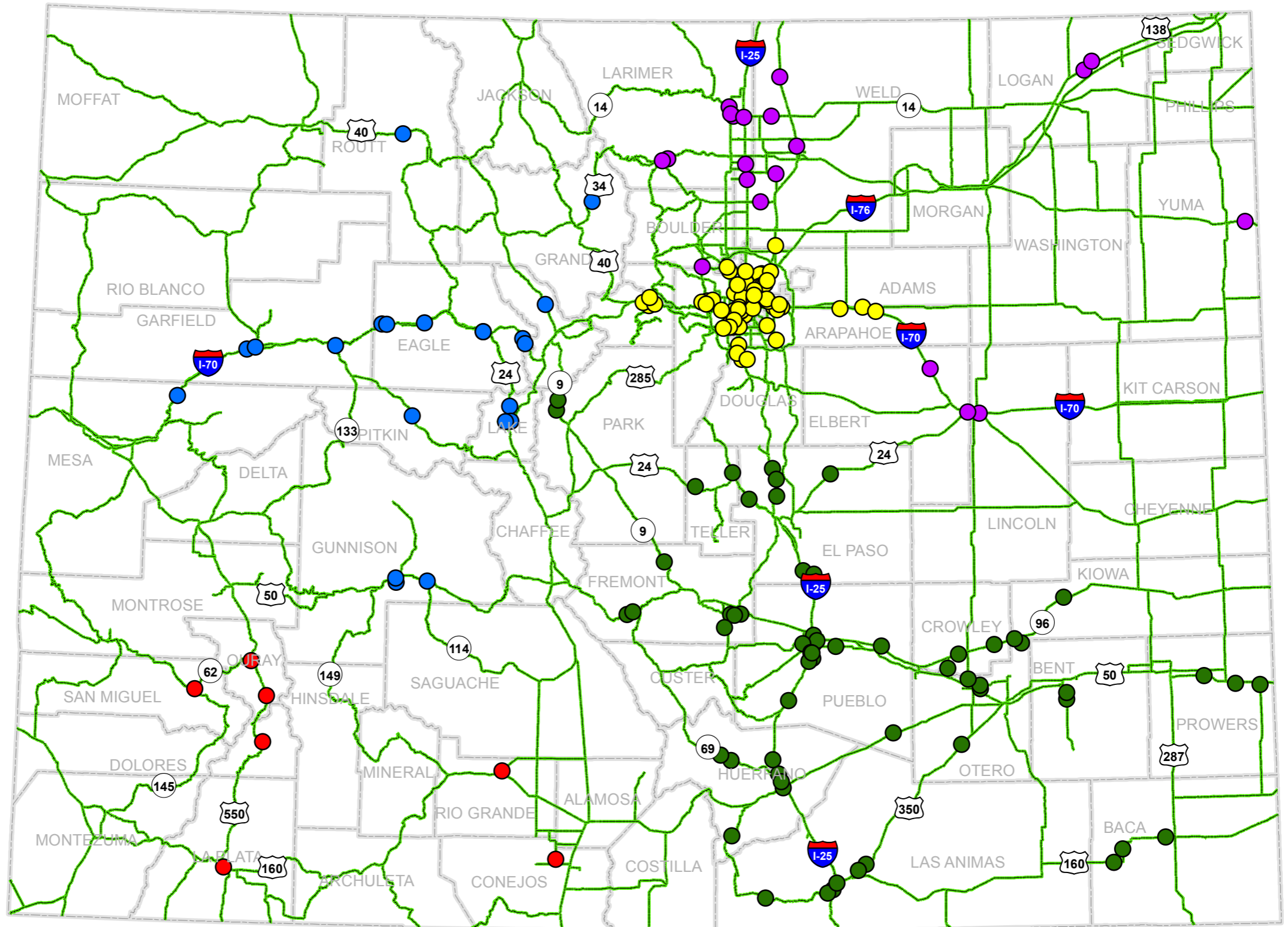
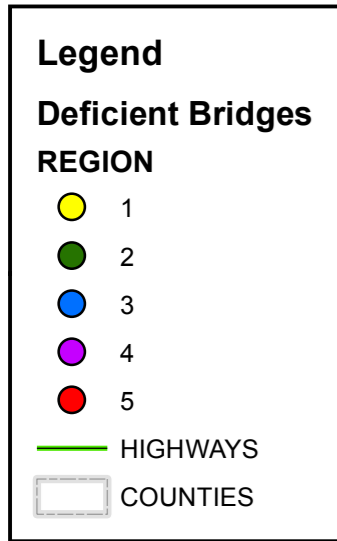
2013 Region	Original Bridge No.	County	Facility Carried over Featured Intersection	Budget	Status	Construction Start Date	Construction Complete Date	Project Delivery Method
2	L-18-AU	PUEBLO	MESA AVE over I 25 ML	\$ 1,926,100	In Design	03/01/15	09/01/15	D/B
2	L-18-M	PUEBLO	I 25 ML NBND over INDIANA AVE	\$ 1,537,952	In Design	03/01/15	09/01/15	D/B
2	L-18-W	PUEBLO	I 25 ML SBND over INDIANA AVE	See L-18-M	In Design	03/01/15	09/01/15	D/B
2	L-19-G	PUEBLO	SH 96 ML over BOB CREEK CANAL	\$ -	Not Programmed			
2	K-18-Z	PUEBLO	SH 96 ML over RDWY, RR, ARKANSAS RIVER	\$ -	Construction Complete	11/07/07	04/01/11	Construction Complete
2	L-19-C	PUEBLO	US 50 BUS RT WBND over ST CHARLES RIVER	\$ 2,956,532	Construction Complete	10/16/09	07/22/10	Construction Complete
2	M-17-R	PUEBLO	I 25 ML over DRAW	\$ -	Construction Complete			Construction Complete
2	M-20-A	PUEBLO	SH 10 ML over SAUNDERS ARROYO	\$ 2,000,000	Construction Complete			Construction Complete
2	H-16-K	TELLER	SH 67 ML over DRAW	\$ 2,616,199	Construction Complete	08/04/10	12/31/10	Construction Complete
2	I-15-Y	TELLER	US 24 ML over TWIN CREEK	\$ -	Construction Complete	08/04/10	10/21/10	Construction Complete
3	F-08-F	EAGLE	I 70 SERVICE RD over COLORADO RIVER (SR); N. of DOTSERO INT.	\$ 11,268,424	Construction Complete	09/04/12	09/30/13	Construction Complete
3	F-09-H	EAGLE	US 6 ML over EAGLE RIVER; E of EAGLE	\$ 4,507,855	Construction Complete	07/20/11	05/18/12	Construction Complete
3	F-08-D	EAGLE	I 70 ML over UP RR (SR)	\$ -	Not Programmed			
3	F-10-L	EAGLE	I 70 ML EBND over US 6, RR, EAGLE RIVER	\$ -	Not Programmed			D-B-B w/ A+B bid
3	F-11-AB	EAGLE	I 70 ML WBND over US 6, RR, EAGLE RIVER; E of JCT US 24	See F-11-AC	In Construction	07/19/14	06/30/15	D-B-B w/ A+B bid
3	F-11-AC	EAGLE	I 70 ML EBND over US 6, RR, EAGLE RIVER; E of JCT SH 131	\$ 14,499,012	In Construction	07/19/14	06/30/15	D-B-B w/ A+B bid
3	F-11-AO	EAGLE	I 70 ML EBND over TIMBER CREEK	\$ -	No Action Proposed			
3	F-05-C	GARFIELD	SH 13 ML over RIFLE CREEK	\$ -	No Action Proposed			
3	F-05-L	GARFIELD	I 70 ML WBND over COLORADO RIVER	\$ -	Not Programmed			D-B-B w/ A+B bid
3	F-07-A	GARFIELD	SH 82 ML over I70 ML, COLORADO RVR,RR; GLENWOOD SPRINGS	\$ 99,660,757	In Design	09/01/15	12/31/17	CMGC
3	D-13-A	GRAND	US 34 ML over N FK COLORADO RIVER	\$ -	Not Programmed			
3	J-09-C	GUNNISON	US 50 SERVICE RD over GUNNISON RVR OVERFLOW (SR); W. SIDE of GUNNISON	\$ 2,716,287	Construction Complete	08/29/11	08/31/12	Construction Complete
3	J-09-D	GUNNISON	US 50 SERVICE RD over GUNNISON RVR (SR); W. SIDE of GUNNISON	See J-09-C	Construction Complete	08/29/11	08/31/12	Construction Complete
3	J-09-G	GUNNISON	SH 114 ML over TOMICHI CREEK	\$ -	Construction Complete			Construction Complete
3	G-11-F	LAKE	US 24 ML over UP RR	\$ 6,891,828	Construction Complete	12/30/10	11/09/11	Construction Complete
3	H-11-D	LAKE	US 24 ML over CALIFORNIA GULCH	\$ -	Construction Complete	7/26/2012	11/2/2012	Construction Complete
3	H-11-F	LAKE	US 24 ML over CALIFORNIA GULCH	\$ -	Construction Complete	7/26/2012	11/2/2012	Construction Complete
3	G-03-Q	MESA	I 70 ML WBND over COLORADO RIVER OVERFLOW	\$ -	Not Programmed			D-B-B w/ A+B bid
3	H-09-B	PITKIN	SH 82 ML over CO RD, CASTLE CREEK	\$ 981,611	Construction Complete	01/27/11	07/21/11	Construction Complete
3	C-09-C	ROUTT	US 40 ML over E FORK ELK RIVER; W of STEAMBOAT SPGS	\$ 5,635,097	Construction Complete	02/28/13	11/19/13	Construction Complete
3	E-12-I	SUMMIT	SH 9 ML over BLUE RIVER	\$ -	No Action Proposed			

## List of FASTER-Eligible Bridges

Q1-FY2015

2013 Region	Original Bridge No.	County	Facility Carried over Featured Intersection	Budget	Status	Construction Start Date	Construction Complete Date	Project Delivery Method
4	E-15-AA	BOULDER	SH 170 ML over COMMUNITY DITCH AR	-	No Action Proposed			No Action Required
4	G-21-B	ELBERT	I 70 FRONTAGE RD over DRAW (SR)	\$ 1,361,415	Construction Complete	01/28/13	05/23/13	Construction Complete
4	G-21-Y	ELBERT	I 70 BUSINESS SPUR over I 70 ML	\$ 200,000	No Action Proposed			
4	B-16-AE	LARIMER	US 287 ML over DRAW; N of JCT SH 1	\$ 3,964,645	Construction Complete	07/25/11	05/01/12	Construction Complete
4	C-15-I	LARIMER	US 34 ML over BIG THOMPSON RIVER	\$ 5,362,816	Construction Complete	08/17/09	06/30/10	Construction Complete
4	C-15-J	LARIMER	US 34 ML over BIG THOMPSON RIVER	\$ -	Construction Complete	08/17/09	06/30/10	Construction Complete
4	B-16-AM	LARIMER	PROSPECT ROAD over I 25 ML	\$ -	Not Programmed			
4	B-16-D	LARIMER	SH 14 ML over CACHE LA POUFRE RIVER; E of JCT US 287	\$ 15,235,491	In Construction	09/15/14	11/20/15	D-B-B
4	B-16-EU	LARIMER	COUNTY ROAD 48 over I 25 ML	\$ -	Not Programmed			
4	C-17-EL	LARIMER	I 25 ML over DRAW	\$ 1,078,230	No Action Proposed	02/07/12		
4	G-22-J	LINCOLN	US 24 ML over DRAW; E of LIMON	\$ 1,044,720	Construction Complete	05/02/11	08/24/11	Construction Complete
4	A-24-C A-26-F	LOGAN SEDGWICK	US 138 ML over DITCH/DRAW	\$ 869,367	Construction Complete	10/01/10	12/15/10	Construction Complete
4	C-17-B	WELD	SH 60 ML over SOUTH PLATTE RIVER	\$ -	Not Programmed			
4	C-18-BK	WELD	US 85 BYPASS SBND over US 85 BUS RT	\$ -	No Action Proposed			
4	D-19-A	WELD	I 76 SERVICE RD over LOST CREEK SR	\$ -	No Action Proposed			
4	B-17-C	WELD	US 85 ML(NUNN BRIDGE) over UPRR	\$ 7,652,645	Construction Complete	03/17/13	06/13/14	Construction Complete
4	B-17-L	WELD	SH 14 ML over COALBANK CREEK; W of AULT	\$ 5,712,268	Construction Complete	02/01/13	09/30/13	Construction Complete
4	C-17-BN	WELD	I 25 SERVICE RD over LITTLE THOMPSON RIVER; S of JCT SH 56	\$ 2,723,890	Construction Complete	09/04/12	04/12/13	Construction Complete
4	D-17-AK	WELD	SH 66 ML over ST VRAIN RIVER; W of PLATTEVILLE	\$ 6,000,266	Construction Complete	11/05/12	10/30/13	Construction Complete
4	D-28-B	YUMA	US 34 ML over N FK REPUBLICAN RIVER; W of LAIRD	\$ 3,474,546	Construction Complete	06/25/12	12/14/12	Construction Complete
5	O-12-AD	CONEJOS	SH 371 ML over ALAMOSA RIVER	\$ -	No Action Proposed			
5	O-05-AQ	LA PLATA	US 160 ML over ANIMAS RIVER	\$ 806,013	Construction Complete	07/26/10	11/23/10	Construction Complete
5	L-05-B	OURAY	SH 62 ML over UNCOMPAHGRE RIVER; SHERMAN ST in RIDGWAY	\$ 7,804,596	Construction Complete	04/24/12	11/09/12	Construction Complete
5	L-06-A	OURAY	US 550 ML over BEAR CREEK	\$ 5,850,074	Construction Complete	07/26/10	10/24/11	Construction Complete
5	N-11-C	RIO GRANDE	SH 112 ML over RIO GRANDE CANAL	\$ -	Not Programmed			
5	M-06-K	SAN JUAN	US 550 ML over MINERAL CREEK	\$ 3,651,884	Construction Complete	08/17/09	06/01/11	Construction Complete
5	L-04-B	SAN MIGUEL	SH 145 ML over LEOPARD CREEK; JCT SH 62 - PLACERVILLE	\$ 3,855,354	Construction Complete	05/15/12	12/07/12	Construction Complete

# Colorado State Map of FASTER Eligible Bridges



180 Faster Eligible Bridges