



Colorado Bridge Enterprise

Quarterly Report No. 09 (Q4 FY2013)

October 16, 2013

Introduction

This report is the ninth Quarterly Report (or Report) published in support of the Colorado Bridge Enterprise (CBE or “Program”). This Report outlines progress and accomplishments associated with the Program for work completed during April, May and June of 2013; which coincides with the fourth quarter of CDOT’s 2013 fiscal year (or Q4 FY2013). Detailed information regarding the FASTER (Funding Advancement for Surface Transportation and Economic Recovery) legislation, program development activities, bond program, previous significant milestones and achievements can be found in the Program Annual Reports and previous Quarterly Reports viewable on CDOT website at www.coloradodot.info/programs/BridgeEnterprise.

During Q4 FY2013, the Program primarily focused on the delivery of bridge projects partially or fully funded by the \$300M bond program. The following is an itemization of significant achievements which are discussed in further detail later in the report:

- Completed the eighth Bridge Enterprise Quarterly Report for Q3 FY2013 (January, February and March of 2013).
- Presented the Q2 FY2013 bond program update for work complete through December 2012 at the April CBE Board meeting.
- Program staff completed the Q3 FY2013 bond program update for work complete through March 2013; findings presented to senior CDOT staff on June 18th in advance of presentation to CBE Board at July 2013 board meeting.
- CDOT OFMB and program staff presented the proposed FY2014 Annual Program Budget for Board approval.
- Completed monthly updates to the overall program schedule for work complete in April, May and June of 2013.
- Program staff finalized the CBE Prioritization Plan and presented overview at Board workshop in May 2013.
- CBE Board adopted the CDOT/ Colorado Bridge Enterprise Pilot Preservation Program Plan Agreement.
- Program incorporated the newly eligible list of “poor” rated bridges (through May 2013) as published by CDOT Staff Bridge.
- Program selected 3 Non-Project Specific (NPS) FASTER design sub-consultants; each award \$3M in contract value.
- Program staff presented and CBE Board subsequently reviewed and approved various resolutions regarding bridge asset ownership at the June Board meeting.
- The FASTER lawsuit (or trial) occurred on May 13th and 14th.
- Program staff in collaboration with CDOT Staff Bridge and CDOT financial advisor (Stifel Nicolaus) submitted International Road Federation award application – excellence in economics and project financing.
- Program staff converted cost and schedule records from six to five CDOT regions.

Program Highlights

There are currently 91 bridges that are partially or fully funded to be completed as part of the \$300M bond program. The majority of the bond funded bridge projects can be classified as complete, in construction or are waiting to go to construction (61 in total or two-thirds of the population); as compared to the number of bridges in the pre-construction or design phase (30 in total or one-third of the population).

Projects in the preconstruction phase are primarily focused on the completion of the PS&E’s (Plans, Specifications and Estimates). In conjunction with this, CDOT specialty groups are diligently working on completing the requisite approvals and permits associated with environmental, railroad, and utility clearances or relocations; securing the necessary Right-of-Way (ROW); and finalizing intergovernmental agreements (as required), etc. Per the current program schedule, construction work is projected to stay at a high level through calendar year 2014, and the work will taper-off during calendar year 2015 into calendar year 2016.

As of the end of June 2013, there were a total of one-hundred and seventy-six (176) bridges considered eligible to receive FASTER funding. The progress status associated with these 176 structures is itemized in Table 1 below.

Table 1. Project Status as of Q4 FY2013

Project Phase	Bridge Number
Future Projects	22
In Design Phase	38
In Construction Phase	20
Projects Complete ⁽¹⁾	82
No Action Proposed	14
Total ⁽²⁾⁽³⁾	176

- (1) Reference Appendix A for List of Completed Bridges
- (2) Reference Appendix B for complete List of FASTER eligible bridges
- (3) Reference Appendix C for Colorado State map of FASTER eligible bridges

Other relevant bridge and financial statistics are as follows:

- Approximately 58% of FASTER eligible bridges are now in construction or completed.
- Approximately 22% of FASTER eligible bridges are currently in design.
- Only 13% of FASTER eligible bridges remain to be programmed (defined as Future Projects); does not include bridges classified as “No Action Proposed”.
- Additionally, \$178.5M and \$68.0M of bond program funds have been expended or encumbered to date, respectively (reference Table 8).

The program schedule progress and performance information presented in Table 2 shows the value of the work complete through Q4 FY2013 as compared to what had been planned to be completed per the baseline schedule. The earned value of work complete to date was \$287.9M as compared to the planned value of the work scheduled to be completed at \$312.9M; which indicates that the program was approximately 8% behind the plan.

Note - Earned Value at the lowest level is attained by multiplying the percent complete of a project activity by its respective budget. Earned value is rolled-up from the project level to the region level, and then again rolled-up from the region level to the program level.

Table 2. Q4 FY2013 Earned Value by CDOT Region and Program (\$K)

CDOT Region	Planned Value of Work through June 30 th	Earned Value of Work through June 30 th	Schedule Variance
1	183,903	163,157	(20,746)
2	63,068	56,217	(6,851)
3	25,019	28,991	3,972
4	30,161	26,159	(4,002)
5	10,842	13,381	2,539
Total	312,993	287,905	(25,088)

The Program has implemented cost and schedule Key Performance Indicators (or KPIs) to track, monitor and report on program performance. As part of the monthly schedule update, a Schedule Performance Index (or SPI) is calculated for each project included within the bond program. The SPI is also calculated and reported at the regional and program levels. The SPI is based upon earned value which compares actual progress to planned performance based upon work complete to date. The program SPI for work complete through June 2013 was 0.92; which represents a 0.04 increase from the previous quarterly report (March 2013 SPI at 0.88). The program has established an SPI goal during execution of greater than or equal to 0.90.

Program Activities and Accomplishments in Q4 FY2013

The Program's main activities and significant accomplishments are briefly described below.

FASTER eligible bridges

Based on the biennial inspection of on-system bridges, CDOT Staff Bridge identified eight additional FASTER eligible structures as itemized in Table 3 below.

Table 3. Newly Eligible FASTER Bridges

Region	Original Bridge Number	Facility Carried over Featured Intersection
1	E-12-I	SH 9 ML over BLUE RIVER
1	E-17-KR	I 270 ML EBND over I 70 ML
2	K-14-B	US 50 ML over OAK CREEK
2	K-17-F	SH 96 ML over RUSH CREEK
2	L-22-L	SH 71 ML over ARKANSAS RIVER
2	N-17-BN	I25 ML SBND over CO RD 640, BUTTE CREEK
2	N-17-S	I25 ML NBND over CO RD 103, BUTTE CREEK
4	C-17-B	SH 60 ML over SOUTH PLATTE RIVER

Pre-Construction Phase

There were no projects which began the pre-construction phase during this period.

Projects that went to AD (Advertisement for Construction)

There were three projects (or 11 bridges) that went to AD during the period as itemized in Table 4 below. The Region 2 bridges are all part of the Region 2 Ilex D/B project. Six of the bridges will be rehabilitated.

Table 4. Projects / Bridges that went to AD

Region	Original Bridge Number	Facility Carried over Featured Intersection
1	E-17-EX	PEORIA STREET over I 76 ML
1	F-17-BS	US 40 ML(E COLFAX) WBND over SAND CREEK
1	F-17-F	US 40 ML(E COLFAX) EBND over SAND CREEK
2	K-18-AX	I 25 ML NBND over US 50 Bus. Rte.
2	K-18-CK	I 25 ML NBND over NP RR,ILEX ST,BENNET ST
2	K-18-CL	I 25 ML SBND over NP RR,ILEX ST,BENNET ST
2	K-18-R	US 50 BUS EBND over ARKANSAS RIVER
2	L-18-AQ	NORTHERN AVE over I 25 ML
2	L-18-AU	MESA AVE over I 25 ML
2	L-18-M	I 25 ML NBND over INDIANA AVE
2	L-18-W	I 25 ML SBND over INDIANA AVE

Completed Projects

There were three projects (or four bridges) that were completed during the period as itemized in Table 5 below.

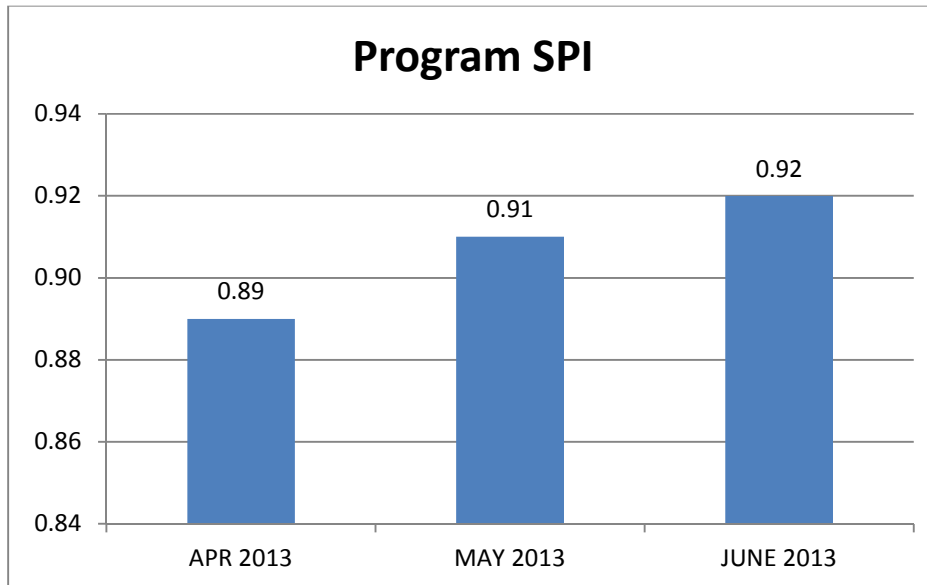
Table 5. Projects / Bridges Completed

Region	Original Bridge Number	Facility Carried over Featured Intersection
2	O-19-J	US 350 ML over DRAW
2	P-19-AD	SH 239 (CO RD 75) ML over IRRIGATION CANAL
4	C-17-BN	I 25 SERVICE RD over LITTLE THOMPSON RIVER
4	G-21-B	I 70 FRONTAGE RD over DRAW (SR)

Program Schedule Update

The bond program schedule was updated three times during the period for work complete in April, May and June of 2013. This includes publishing the monthly updated program bar-chart schedule, cost and schedule database, and list of projects with an SPI < 0.90. This information was consolidated and distributed to the Regional Transportation Director’s (or RTD’s) and their respective program engineers. The SPI’s reported for each month during the quarter are graphically depicted on Figure 1 below.

Figure 1. Bond Program SPI Reported by Month



Schedule Change Control Board

The Schedule Change Control Board (SCCB) conducted three meetings during the period on April 11th, May 8th and June 13th. The SCCB meetings were attended by senior CDOT HQ staff including: Tim Harris (Chief Engineer), Ben Stein (CFO), Herman Stockinger (government relations), Scott McDaniel (Director of Staff Branches), Regional RTD’s and program engineers. The purpose of the SCCB meetings was two-fold: (1) document and review projects with an SPI < 0.90, and (2) allow the RTD’s (or their designated delegate) an opportunity to petition the SCCB to make adjustments to a project’s baseline schedule when the schedule logic does not reflect current project delivery and is artificially impacting the SPI calculation. Formal meeting minutes were published with a list of attendees and an

itemized list of SCCB approved changes; subject changes were incorporated into the program schedule in the subsequent schedule update.

Note - the SCCB policy is not intended to provide relief to poorly performing projects. Any baseline adjustments must properly document project issues, and justifiable rationale on proposed adjustments including recommendations to improved project delivery, issues mitigation, required supplemental staffing, and proposed recovery schedules (as necessary).

Prioritization Plan

Program staff in concert with CDOT Staff Bridge completed the Prioritization Plan which utilizes both quantitative and qualitative criteria to determine which bridges should be advanced into the program, and represents the best and most appropriate use of available funding. A survey was sent out to CDOT Staff, the Board of Directors and other stakeholders to determine major and minor scoring criteria and weighting factors for prioritizing or ranking the bridges. CBE developed a “scoring worksheet” which was presented at the May 2013 workshop. Program staff used the plan to move or reclassify 7 un-programmed bridges to the No Action Proposed designation which are itemized in Table 6 below.

Table 6. No Action Proposed

Original Bridge Number	Facility Carried over Featured Intersection	Prioritization Plan Score
F-14-Y	I 70 (BUSINESS RT) over I 70 ML	20
F-15-BL	I 70 ML WBND over US 6, CLEAR CREEK	15
F-15-D	I 70 FRONTAGE RD over CLEAR CREEK (SR)	25.5
N-17-AD	I 25 ML SBND over US 160 ML, RR SPUR	13
C-18-BK	US 85 BYPASS SBND over US 85 BUS RT	9
D-19-A	I 76 SERVICE RD over LOST CREEK SR	21
O-12-AD	SH 371 ML over ALAMOSA RIVER	28

Pilot Preservation Program

CBE staff worked with CDOT Staff Bridge on the development and implementation of pilot preservation program to test the effectiveness of low-cost preventative / preservation measures (e.g., deck washing, waterproofing exposed concrete surfaces, etc.) that extend the useful life of a bridge. The Pilot Preservation Plan Agreement was adopted at the April CBE Board meeting. A budget was approved and Staff Bridge is creating an RFP and selecting candidate bridges for the program.

Major Project/Program Strategic Planning and Coordination

CBE continues to work intimately with various CDOT project teams on coordination, funding eligibility, and strategic planning issues associated with the following large projects:

- Region 1: Project staff issued RFQ for Design / Build contractor for I 70 over Havana Street project. Project team announced short list of three contractor/design engineer teams. RFP scheduled to be issued late June.
- Region 1: The Pecos over I-70 bridge move is scheduled for mid-July.

- Region 1: Project team selected the Design / Build contractor in May for the US 6th Avenue road improvement and bridge project. CBE has three replacement bridges in the project; 6th Ave over BNSF, So. Platte River and Bryant Street.
- Region 2: Project team re-issued Ilex Design / Build Bridge Replacement project RFQ in May, six additional bridges were added and scheduled to be rehabilitated.
- Region 3: SH 82 Grand Ave Bridge in Glenwood Springs. Continued support at Public Open House Hearing(s), Project Leadership Team (PLT), Project Working Group (PWG) and FHWA overview meeting. Project team selected CM/GC in May.

Quarterly Program Reports

Q3 FY2013 Quarterly Report. Bridge Enterprise completed the quarterly report highlighting program progress for work complete in January, February and March of 2013 which coincided with CDOT's third quarter of fiscal year 2013 (or Q3 FY2013).

Q3 FY2013 Quarterly Bond Program Update. The \$300M bond program allocation plan was updated for work complete through December 2012. The allocation plan serves multiple purposes but primarily: (1) forecasts bond proceed spending, and (2) used as a tool to track program financial liabilities as compared to available FASTER funding sources to ensure there is sufficient funding to complete programmed work scope as planned. The Q3 FY2013 bond program update was presented to senior CDOT staff, including the Executive Director in June and is scheduled to be presented at the July CBE Board meeting.

Monthly Bond Program Update. The program staff committed to completing a monthly bond update rather than quarterly updates through year end. The monthly update information was combined with the Q3 FY2013 update in preparation for the July workshop.

Cash Flow Financing / Encumbrance Deficit. In conjunction with the bond program update, the program issues an encumbrance table which tracks program liabilities as compared to FASTER revenues. The Q3 FY2013 and April 30th bond updates both projected a large cash-deficit in FY2104. CBE issued a memorandum outlining the cash-deficit including a request for a policy decision on amount of deficit to be carried to help guide current / future programming.

FASTER Job Creation

FHWA tracks the economic benefits of highway capital investments (which include bridge replacement projects), and from a job creation perspective employment impacts fall into three categories as listed below:

- Direct jobs are occupations that work directly on the project such as project planners, designers, engineers and construction workers.
- Indirect jobs means positions at suppliers of materials for the project, such as steel, concrete, wood, etc.

- Induced jobs are jobs created by the spending of monies provided as project salaries [or employee payroll] for items such as mortgage payments, groceries, gas entertainment, etc.

According to an FHWA report from April 2012, there are approximately 10.3 direct jobs created for every \$1 million of construction spending. This correlates into approximately 482 full-time positions; primarily construction craft labor. In addition, preconstruction program expenditures (i.e., engineering and project designs) created another approximately 213 full-time positions; primarily engineers. Combined, there were approximately 695 direct jobs created by the FASTER program spending during the reporting period. Included within the above number are approximately 60 CDOT FTE's (or full-time equivalents); staff responsible for the day-to-day delivery of the program based upon CDOT payroll records.

Resolutions Approved by the Bridge Enterprise Board

The following is a brief overview of resolutions passed by the Bridge Enterprise BOD or significant topics discussed during Q4 FY2013 as itemized in Table 7 below.

Table 7. Board Resolution / Significant Topics

April BOD Meeting (No workshop)
<ul style="list-style-type: none"> ▪ Adoption of 11th budget supplement for FY2013 ▪ Adopted the CBE FY2014 Annual Program Budget ▪ Presented the Q2 FY2013 Bond Program Allocation Plan Update ▪ Adopted the CDOT/CBE Preservation Plan Agreement ▪ Monthly Progress Report
May Workshop / BOD Meeting
<ul style="list-style-type: none"> ▪ Bridge Prioritization Plan Presentation (workshop) ▪ Adoption of 12th budget supplement for FY2013 ▪ I70 East Early Action Funding Needs Presentation ▪ Monthly Progress Report
June BOD Meeting (No workshop)
<ul style="list-style-type: none"> ▪ Adoption of 13th budget supplement for FY2013 ▪ Adoption of 1st budget supplement for FY2014 ▪ Transfer of assets from CDOT to BE; Bridges to be rehabilitated ▪ Recognition of new bridge ID on previously transferred Bridges completed by BE ▪ Recognition of asset ownership of BE budgeted and completed Bridge ▪ Pecos over I70 Bridge move Project Update ▪ Monthly Progress Report

Other Significant Achievements

- I70 East Early Action Funding Needs presentation at May BOD.
- CBE program awarded 3 Non-Project Specific (NPS) FASTER design-based contracts in May; \$3.0M per award.

- Bridge Enterprise and CDOT staff continued to support State Attorney General Office in regards to the FASTER lawsuit which occurred on May 13th and 14th. State Attorney General submitted “Findings of Facts & Conclusions of Law” on June 4th; currently awaiting bench response.
- BE finance manager updated the program STIP/TIP document to confirm program is financially constrained as requested by CDOT/CBE CFO.
- Assisted BE budget analyst on development of FY 2014 annual program budget.
- Assisted BE budget analyst on establishing scoping pool set-up for FY2014.
- CBE program manager in concert with CDOT F&A staff continue to tracking bond expenditures as compared to forecasted bond spending and identify factors impacting bond spending. The program is working to confirm projects schedules and budgets to help satisfy bond spending.
- CBE staff continues to supported CDOT’s Public Relations and Government Relations on ongoing updates to the CDOT/Bridge Enterprise website and monthly “dash-board” performance metric updates.
- Program continues to work with CDOT HQ railroad liaison to identify and minimize coordination delays with UP and BNSR railroads.
- CDOT EEO office provided quarterly DBE update which was included in the May progress report update.
- Worked with BE accountant on Quarterly CBE maintenance invoice.
- Working with BE budget analyst on de-programming dollars with completed phases and actively re-programming the surplus dollars back into the program via new work scope or used to cover increases to planned budgets.
- Supported CDOT internal audit relative to audit of overall Bridge Enterprise program.
- Miscellaneous project support:
 - Met with Region 1 project team to evaluate ABC techniques for Colfax over Tollgate
 - Assisted Region 1 project team in a financial review for the I-25 over Santa Fe project
 - Continue to work with Region 1 to expedite advancement of Arapahoe over Cherry Creek replacement bridge project
 - Met with Region 2 to de-program Bridge I-17-O
 - Program staff met with Region 1 and 3 to potentially fund / add newly eligible FASTER bridges to the bond program
- Regional DBIA conference presentation of CBE overview in May.
- Presented CBE status update at quarterly CCA in May.
- Provided CBE 10-year bridge plan and participated in conference call with Macquarie staff to review.

Financial Information

The following is a program overview of financial statistics as of June 30, 2013.

- The program has multiple funding sources including: proceeds from the Build America Bond program, FASTER bridge dollars which is commonly referred to as the statewide pay-go

program (collected yearly revenues from vehicle registrations), Bank of America Loan, and Other Funds which are primarily Federal-aid BR funding.

- From program inception (or life-to-date), a total of \$518.4M has been budgeted (all funding sources), and Expenditures and Encumbrances are \$279.4M and \$86.9M (all funding sources), respectively. Reference Table 8 below for details by funding source.
- For comparison purposes, the totals from the previous quarterly report (Q3 FY2013) have also been reported in the far right column.
- Based upon the \$300M bond program baseline schedule developed in February 2011, approximately \$265.9M of bond dollars were projected to be expended by Q4 FY2013; whereas, actual expenditures were \$178.5M but with \$68.0M in encumbrances.

Table 8. Program Financial Statistics as of (\$ in Millions).

	Build America Bonds 2010 A Proceeds	FASTER Bridge	Bank of America Loan	Other Funds	Total Q4 FY2013	Total Q3 FY2013
Budget	\$294.3	\$155.9	\$40.0	\$28.2	\$518.4	\$506.1
Expenditures	\$178.5	\$38.6	\$36.9	\$25.4	\$279.4	\$228.4
Encumbrances	\$68.0	\$14.8	\$1.3	\$2.8	\$86.9	\$113.5

The \$300M bond program currently consists of ninety-one (91) bridges; fifty-seven (57) of these bridges are fully funded, and thirty-four (34) of these bridges are partially funded with current available sources and will require future funding (future bond issuance or other funding) to complete. The estimated total cost for these ninety-one bridges is approximately \$827.8M. Table 9 below provides an itemization of current funding sources and indicates that \$447.9M of additional future funding will be necessary to complete all bridges which could include a second bond issuance. The timing and projected value of any future bond offerings is yet to be determined.

Table 9. Current Bond Allocation Plan (\$ in Millions)

Build America Bonds	FASTER Bridge	Other Funds	Future Bond Issue or Other Funding	Total
\$298.0	\$45.8	\$36.1	\$447.9	\$827.8

Economic Outlook

The following are highlights from project bid data results maintained by CDOT's Engineering Estimates and Market Analysis (EEMA) group for transportation related projects advertised during the period.

- There were on average 4.8 bidders per project during the period; down from 5.32 bidders per project from the previous quarter.
- On average, the low bid on 52 transportation related projects (bid during the reporting period) was lower than the engineer's estimate by approximately 2.3%.
- There were a total of 3 FASTER projects bid during the period, and on average the low bid was approximately 16% lower than the engineer's estimate.

The following economic statistics were reported by the Chief Economist from the Associated General Contractors (AGC) of America as reported by AGC's Data DIGest during the quarter. The data provides insight on economic movement associated with the Producer Price Index, Construction Employment and other economic metrics (both state and national) year-over-year (e.g., June 2012 to June 2013).

Producer Price Index

The Producer Price Index (PPI) for inputs to construction – a weighted average of the cost of all materials used in construction plus items consumed by contractors such as diesel fuel – slipped 0.1% for the month [June 2013] and rose just 1.5% year-over-year [June 2012 to June 2013]. (Vol. 13, No. 26 Data DIGest)

Construction Employment

- Seasonally adjusted construction employment climbed in 36 states and fell in 14 states and D.C. (Vol. 13, No. 27; Data DIGest)
- Rose in 191 out of 339 metropolitan areas (including divisions of larger metros) in the 12 months through June (the largest number of gainers since March 2012), declined in 97 and was flat in 51 according to an analysis of BLS data that AGC released. (Vol. 13, No. 30; Data DIGest)

Other

- Construction spending in June totaled \$884 billion at a seasonally adjusted annual rate, down 0.6% from May and up 3.3% from June 2012. (Vol. 13, No. 30; Data DIGest)
- The National Highway Construction Cost Index (NHCCI) is a measure of the average change over time in the prices paid by state transportation departments for roadway construction materials and services. If the average change over time increases it is called 'inflation' if the average price over time decreases it is called 'deflation'. The NHCCI decreased 1.1% from December 2012 to March 2013 [most recent data]. The index decreased by 1.3% from March 2012 to March 2013. (FHWA website)
- Colorado was ranked 6th in the country in the percent of new construction jobs [9,200] gained at 8% year-over-year (June 2012 to June 2013) as reported by the AGC from the Bureau of Labor Statistics and U.S. Department of Labor.
- The Denver-Aurora-Broomfield, CO metropolitan area was ranked 66th out of 339 metropolitan areas in the percent of new construction jobs [5,600] gained at 7% year-over-year (June 2012 to June 2013). This represented over 60% of all new jobs ($5,600/9,200 = 69.5\%$) created for the entire state.

The economic indicators at the national level were generally more positive than negative; construction spending up 3.3% year-over year, construction employment up 70% at the state level including District of Columbia (36 out of 51 = 71%), there was the largest gain (191 out of 339) in metropolitan areas since March 2012, and the NHCCI was "deflationary" over the past quarter and year-over-year data. At the state level, Colorado was a leader in employment gains with a 6th best in the country with 9,200 new jobs or an 8% growth in new jobs year-over-year.

Current List of Completed Bridges Q4-FY2013

2013 Regions	Region	Original Bridge Number	County	Facility Carried over	Featured Intersection	Work Completed
1	6	E-16-FP	ADAMS	80TH AVE over US 36 ML		Replaced
1	6	E-17-AR	ADAMS	SH 7 ML over SOUTH PLATTE RIVER		Replaced
1	6	E-17-DM	ADAMS	I 76 ML WBND over UP RR		Replaced
1	6	E-17-DN	ADAMS	I 76 ML EBND over UP RR		Replaced
1	6	E-17-EZ	ADAMS	84TH AVE over I 25 ML		Replaced
1	6	E-17-GL	ADAMS	I 76 ML WBND over SOUTH PLATTE RIVER		Replaced
1	6	E-17-GM	ADAMS	I 76 ML EBND over SOUTH PLATTE RIVER		Replaced
1	6	E-17-HG	ADAMS	104TH AVE over I 25 ML		Replaced
1	6	E-17-HL	ADAMS	I 76 ML EBND over SH 224 ML		Replaced
1	6	F-16-FY	ARAPAHOE	US 285 ML SBND over SH 88 ML		Replaced
1	6	F-16-FZ	ARAPAHOE	US 285 ML NBND over SH 88 ML		Replaced
1	1	F-19-B	ARAPAHOE	US 36 ML over COMANCHE CREEK		Replaced
1	1	F-14-B	CLEAR CREEK	I 70 FRONTAGE RD over CLEAR CREEK (SR)		Replaced
1	6	E-17-BY	DENVER	I 70 ML EBND over SAND CREEK		Replaced
1	6	E-17-GE	DENVER	I 70 ML WBND over SAND CREEK		Replaced
1	6	F-16-BM	DENVER	SH 88 ML over RR, LAKEWOOD GULCH		Replaced
1	6	F-16-FW	DENVER	US 287+SH 88 (FEDERAL) over US 40 ML (COLFAX)		Replaced
1	6	F-16-OG	DENVER	RAMP to I 25 NBND over US 6 ML		Repaired
1	6	F-17-AE	DENVER	SH 30 ML/HAVANA ST over CHERRY CREEK		Replaced
1	6	E-16-FX	JEFFERSON	WASHINGTON STREET over SH 58 ML		Replaced
1	6	E-16-HI	JEFFERSON	SH 58 ML over CO. RD,RR SPUR		Replaced
1	6	F-16-AM	JEFFERSON	US 285 ML SBND over SH 121 ML		Replaced
1	6	F-16-AY	JEFFERSON	US 285 ML NBND over SH 121 ML		Replaced
1	6	F-16-I	JEFFERSON	US 285 ML SBND over PIERCE STREET		Replaced
2	2	O-25-H	BACA	US 160 ML over N FK SAND ARROYO		Replaced
2	2	O-25-I	BACA	US 160 ML over DRAW		Replaced
2	2	O-26-L	BACA	US 160 ML over CAT CREEK		Replaced- minor structures
2	2	L-24-F	BENT	SH 101 ML over PURGATOIRE RIVER		Repaired
2	2	M-24-B	BENT	SH 101 ML over Draw		Replaced
2	2	L-21-U	CROWLEY	SH 96 ML over NUMA DRAIN CANAL		Replaced- minor structure

Current List of Completed Bridges Q4-FY2013

2013 Regions	Region	Original Bridge Number	County	Facility Carried over	Featured Intersection	Work Completed
2	2	L-22-F	CROWLEY	SH 96 ML over	BLACK DRAW	Replaced
2	2	H-18-A	EL PASO	US 24 ML over	BLACK SQUIRREL CREEK	Replaced
2	2	I-17-AE	EL PASO	US 24 ML EBND over	FOUNTAIN CREEK	Repaired
2	2	I-18-G	EL PASO	US 24 ML over	DRAW	Replaced
2	2	J-18-S	EL PASO	I 25 ML NBND over	DRAW	Replaced- minor structure
2	2	J-18-T	EL PASO	I 25 ML NBND over	DRAW	Replaced- minor structure
2	2	J-15-B	FREMONT	SH 9 ML over	CURRENT CREEK	Replaced
2	2	K-16-Q	FREMONT	SH 120 ML over	HARDSCRABBLE CREEK	Replaced
2	2	N-16-L	HUERFANO	SH 69 ML over	TURKEY CREEK	Replaced
2	2	N-17-N	HUERFANO	I 25 ML NBND over	MISSOURI CREEK	Replaced
2	2	O-16-A	HUERFANO	SH 12 ML over	CUCHARAS RIVER	Replaced
2	2	K-23-B	KIOWA	SH 96 ML over	DRAW	Replaced
2	2	K-23-C	KIOWA	SH 96 ML over	DRAW	Replaced
2	2	K-24-A	KIOWA	SH 96 ML over	DRAW	Replaced
2	2	O-19-J	LAS ANIMAS	US 350 ML over	DRAW	Replaced
2	2	P-17-H	LAS ANIMAS	SH 12 ML over	PURGATOIRE RIVER	Replaced
2	2	P-18-B	LAS ANIMAS	I 25 ML NBND over	PURGATOIRE RIVER	Replaced
2	2	P-18-S	LAS ANIMAS	I 25 ML SBND over	PURGATOIRE RIVER	Replaced
2	2	P-19-AD	LAS ANIMAS	SH 239(CO RD 75) ML over	IRRIGATION CANAL	Replaced
2	2	L-22-E	OTERO	SH 266 ML over	FT LYON STORAGE CANAL	Replaced
2	2	L-22-K	OTERO	SH 71 ML over	FT LYON CANAL	Replaced
2	2	L-22-O	OTERO	SH 266 ML over	HOLBROOK CANAL	Replaced
2	2	M-21-D	OTERO	US 350 ML over	DRAW	Replaced
2	1	G-12-L	PARK	SH 9 ML over	BUCKSKIN GULCH	Repaired
2	2	L-28-F	PROWERS	SH 89 ML over	ARKANSAS RIVER	Replaced
2	2	K-18-Z	PUEBLO	SH 96 ML over	RDWY, RR, ARKANSAS RVR	Replaced
2	2	L-19-C	PUEBLO	US 50 BUS. RT WBND over	ST CHARLES RIVER	Replaced
2	2	M-17-R	PUEBLO	I 25 ML over	DRAW	Repaired
2	2	M-20-A	PUEBLO	SH 10 ML over	SAUNDERS ARROYO	Replaced
2	2	H-16-K	TELLER	SH 67 ML over	DRAW	Replaced

Current List of Completed Bridges Q4-FY2013

2013 Regions	Region	Original Bridge Number	County	Facility Carried over	Featured Intersection	Work Completed
2	2	I-15-Y	TELLER	US 24 ML over TWIN CREEK		Repaired
3	3	F-09-H	EAGLE	US 6 ML over EAGLE RIVER		Replaced
3	3	J-09-C	GUNNISON	US 50 SVC RD over GUNNISON RVR OVERFLOW (SR)		Repaired
3	3	J-09-D	GUNNISON	US 50 SERVICE RD over GUNNISON RVR (SR)		Repaired
3	3	J-09-G	GUNNISON	SH 114 ML over TOMICHI CREEK		Replaced
3	3	G-11-F	LAKE	US 24 ML over UP RR		Replaced
3	3	H-11-D	LAKE	US 24 ML over CALIFORNIA GULCH		Replaced
3	3	H-11-F	LAKE	US 24 ML over CALIFORNIA GULCH		Replaced- minor structure
3	3	H-09-B	PITKIN	SH 82 ML over CO RD, CASTLE CREEK		Repaired
4	1	G-21-B	ELBERT	I 70 FRONTAGE RD over DRAW (SR)		Replaced
4	4	B-16-AE	LARIMER	US 287 ML over DRAW		Replaced
4	4	C-15-I	LARIMER	US 34 ML over BIG THOMPSON RIVER		Replaced
4	4	C-15-J	LARIMER	US 34 ML over BIG THOMPSON RIVER		Replaced
4	1	G-22-J	LINCOLN	US 24 ML over DRAW		Replaced
4	4	A-24-C/A-26-F	LOGAN SEDGWICK	US 138 ML over DITCH/DRAW		Replaced- minor structure
4	4	C-17-BN	WELD	I 25 SERVICE RD over LITTLE THOMPSON RIVER		Replaced
4	4	D-28-B	YUMA	US 34 ML over N FK REPUBLICAN RIVER		Replaced
5	5	O-05-AQ	LA PLATA	US 160 ML over ANIMAS RIVER		Repaired
5	5	L-05-B	OURAY	SH 62 ML over UNCOMPAHGRE RIVER		Replaced
5	5	L-06-A	OURAY	US 550 ML over BEAR CREEK		Replaced
5	5	M-06-K	SAN JUAN	US 550 ML over MINERAL CREEK		Replaced
5	5	L-04-B	SAN MIGUEL	SH 145 ML over LEOPARD CREEK		Replaced

List of FASTER Eligible Bridges
Q4-FY2013

Region	2013 Regions	Original Bridge Number	County	Facility Carried over	Featured Intersection	Budget	Status	Construction Start Date	Construction Completion Date	Project Delivery Method
1	1	F-19-AF	ADAMS	COUNTY ROAD over I 70 ML		TBD	Not Programmed	TBD	TBD	TBD
6	1	E-17-EZ	ADAMS	84TH AVE over I 25 ML		\$ 11,950,000	Construction Complete	02/24/11	10/31/12	D-B-B
6	1	E-17-GM	ADAMS	I 76 ML EBND over SOUTH PLATTE RIVER NE of JCT I 270		\$ 13,035,000	Construction Complete	09/12/11	07/23/12	D-B-B
6	1	E-17-GL	ADAMS	I 76 ML WBND over SOUTH PLATTE RIVER NE of JCT I 270		See E-17-GM	Construction Complete	09/12/11	07/23/12	D-B-B
6	1	E-16-AA	ADAMS	US 287 ML over RR SPUR		\$ 17,017,000	In Design	09/30/14	03/05/16	D-B-B
6	1	E-16-GQ	ADAMS	SH 95 ML (SHERIDAN BLVD) over UP RR, RR SPUR N of JCT I 70 in WHEATRIDGE		\$ 7,284,000	In Construction	04/24/12	08/30/13	D-B-B
6	1	E-16-FP	ADAMS	80TH AVE over US 36 ML		\$ 11,360,000	Construction Complete	05/06/10	10/20/11	Construction Complete
6	1	E-17-ER	ADAMS	SH 44 ML(104TH AVE) over BULL SEEP W of US 85		\$ 10,302,000	In Design	11/05/13	04/30/15	D-B-B
6	1	E-17-CA	ADAMS	SH 44 ML(104TH AVE) over SOUTH PLATTE RIVER W of JCT US 85		See E-17-ER	In Design	11/05/13	04/30/15	D-B-B
6	1	E-17-EX	ADAMS	PEORIA STREET over I 76 ML NE of JCT US 85		\$ 6,858,000	Design Completed	07/01/13	12/31/13	D-B-B
6	1	E-17-DC	ADAMS	I 76 ML EBND over UP RR E of JCT US 85		\$ 19,771,000	In Design	09/15/13	11/30/14	D-B-B
6	1	E-17-DU	ADAMS	I 76 ML WBND over UP RR E of JCT US 85		See E-17-DC	In Design	09/15/13	11/30/14	D-B-B
6	1	E-17-HG	ADAMS	104TH AVE over I 25 ML		\$ 8,537,000	Construction Complete	05/21/09	12/20/10	Construction Complete
6	1	E-17-AR	ADAMS	SH 7 ML over SOUTH PLATTE RIVER		\$ -	Construction Complete	05/19/09	01/07/11	Construction Complete
6	1	E-17-DM	ADAMS	I 76 ML WBND over UP RR		\$ 6,750,000	Construction Complete	--	--	Construction Complete
6	1	E-17-DN	ADAMS	I 76 ML EBND over UP RR		\$ -	Construction Complete	--	--	Construction Complete
6	1	E-17-HL	ADAMS	I 76 ML EBND over SH 224 ML		\$ -	Construction Complete	--	--	Construction Complete
6	1	E-17-EP	ADAMS	SH 6 DITCH RIDER RD over BURLINGTON CANAL SR		\$ -	No Action Proposed	--	--	--
6	1	E-17-IC	ADAMS	YORK STREET over I 270 ML		TBD	Not Programmed	TBD	TBD	TBD
1	1	F-19-B	ARAPAHOE	US 36 ML over COMANCHE CREEK E of STRASBURG		\$ 1,843,000	Construction Complete	04/23/12	06/15/12	D-B-B
6	1	F-17-F	ARAPAHOE	US 40 ML(E COLFAX) EBND over SAND CREEK E of I-225		\$ 12,631,000	Design Completed	07/21/13	01/30/15	D-B-B
6	1	F-17-BS	ARAPAHOE	US 40 ML(E COLFAX) WBND over SAND CREEK E of I-225		See F-17-F	Design Completed	07/21/13	01/30/15	D-B-B
6	1	F-16-F	ARAPAHOE	US 85(SANTA FE) ML NBND over DAD CLARK GULCH in LITTLETON		\$ 3,968,000	In Construction	11/27/12	10/31/13	Streamlined D/B
6	1	F-17-DM	ARAPAHOE	SH 88 ML/ARAP RD over CHERRY CREEK W OF SH 83(PARKER RD)		\$ 30,092,000	In Design	09/12/13	03/01/15	D-B-B
6	1	F-17-GO	ARAPAHOE	US 40 ML(E COLFAX) EBND over TOLLGATE CREEK W of I-225		\$ 24,522,000	In Design	04/01/14	10/31/15	D-B-B
6	1	F-17-GA	ARAPAHOE	US 40 ML(E COLFAX) WBND over TOLLGATE CREEK W of I-225		See F-17-GO	In Design	04/01/14	10/31/15	D-B-B
6	1	F-16-FY	ARAPAHOE	US 285 ML SBND over SH 88 ML		See F-16-AM	Construction Complete	08/31/10	07/31/11	Construction Complete
6	1	F-16-FZ	ARAPAHOE	US 285 ML NBND over SH 88 ML		See F-16-AM	Construction Complete	08/31/10	07/31/11	Construction Complete
1	1	F-19-F	ARAPAHOE	US 36 ML over DRAW		TBD	Not Programmed	TBD	TBD	TBD
2	2	O-26-L	BACA	US 160 ML over CAT CREEK W of SPRINGFIELD		\$ 4,120,000	Construction Complete	03/29/12	12/13/12	Modified D/B
2	2	O-25-I	BACA	US 160 ML over DRAW W of PRITCHETT		See O-26-L	Construction Complete	03/29/12	12/13/12	Modified D/B
2	2	O-25-H	BACA	US 160 ML over N FK SAND ARROYO SW of PRITCHETT		See O-26-L	Construction Complete	03/29/12	12/13/12	Modified D/B
2	2	M-24-B	BENT	SH 101 ML over DRAW S of LAS ANIMAS and JCT US 50		\$ 4,907,000	Construction Complete	03/29/12	10/31/12	Modified D/B
2	2	L-24-F	BENT	SH 101 ML over PURGATOIRE RIVER S of LAS ANIMAS		See M-24-B	Construction Complete	03/29/12	10/31/12	Modified D/B
4	4	E-15-AA	BOULDER	SH 170 ML over COMMUNITY DITCH AR (CNTY RD / OLD WADS over US 36 ML (DENVER/BOULDER TNPK) SE of JCT SH 121		\$ 13,355,000	In Construction	05/10/12	09/30/13	D/B
6	1	E-16-FL	BROOMFIELD	SH 121 ML SBND- WADSWORTH PKWY over US 36 ML (DENVER/BOULDER TNPK)		\$ 28,159,000	In Construction	05/10/12	09/30/13	D/B
6	1	E-16-FK	BROOMFIELD	I 70 FRONTAGE RD over CLEAR CREEK (SR) W IDAHO SPRINGS		\$ 1,923,000	Construction Complete	07/19/10	11/23/10	Construction Complete
1	1	F-14-B	CLEAR CREEK	I 70(BUSINESS RT) over I 70 ML		\$ -	No Action Proposed	--	--	--
1	1	F-14-Y	CLEAR CREEK	I 70 ML WBND over US 6, CLEAR CREEK		\$ -	No Action Proposed	--	--	--
1	1	F-15-BL	CLEAR CREEK	I 70 ML WBND over US 6, CLEAR CREEK		\$ -	No Action Proposed	--	--	--
1	1	F-15-D	CLEAR CREEK	I 70 FRONTAGE RD over CLEAR CREEK (SR)		\$ -	No Action Proposed	--	--	--
5	5	O-12-AD	CONEJOS	SH 371 ML over ALAMOSA RIVER		\$ -	No Action Proposed	--	--	--
2	2	L-22-F	CROWLEY	SH 96 ML over BLACK DRAW		See K-23-B	Construction Complete	08/18/10	09/21/11	Construction Complete
2	2	L-21-U	CROWLEY	SH 96 ML over NUMA DRAIN CANAL		\$ -	Construction Complete	--	--	Construction Complete
6	1	F-17-AE	DENVER	SH 30 ML/HAVANA ST over CHERRY CREEK		\$ 5,779,000	Construction Complete	02/07/11	06/15/12	Construction Complete
6	1	E-17-GE	DENVER	I 70 ML WBND over SAND CREEK E of QUEBEC ST		\$ 10,774,000	Construction Complete	07/29/11	07/06/12	D-B-B w/ A+B bid
6	1	E-17-BY	DENVER	I 70 ML EBND over SAND CREEK E of QUEBEC ST		See E-17-GE	Construction Complete	07/29/11	07/06/12	D-B-B w/ A+B bid
6	1	F-16-DP	DENVER	I 25 ML over RDVY,RR, SOUTH PLATTE RVR BRONCO BRIDGE		\$ 24,360,000	In Construction	05/02/11	07/11/13	In Construction
6	1	F-16-DT	DENVER	I 25 ML NBND over US 85 ML (SANTA FE)		\$ 17,922,000	In Construction	07/11/11	08/31/13	D-B-B

List of FASTER Eligible Bridges
Q4-FY2013

Region	2013 Regions	Original Bridge Number	County	Facility Carried over	Featured Intersection	Budget	Status	Construction Start Date	Construction Completion Date	Project Delivery Method
6	1	F-16-DW	DENVER	I 25 ML SBND over US 85 ML (SANTA FE)		See F-16-DT	In Construction	07/11/11	08/31/13	D-B-B
6	1	F-16-FW	DENVER	US 287+SH 88 (FEDERAL) over US 40 ML (COLFAX)		\$ 8,599,000	Construction Complete	09/26/11	01/16/13	D-B-B
6	1	F-16-GG	DENVER	PERRY STREET over US 6 ML W of FEDERAL		\$ -	No Action Proposed	--	--	Transfer out of CBE
6	1	F-16-EJ	DENVER	US 6 ML over BNSF RR E SIDE OF I-25		\$ 14,434,000	Design Completed	06/30/13	07/31/16	D/B
6	1	E-16-FW	DENVER	PECOS STREET over I 70 ML in DENVER		\$ 25,562,000	In Construction	11/05/12	10/15/13	CMGC
6	1	F-16-EF	DENVER	US 6 ML over SOUTH PLATTE RIVER W SIDE OF I-25		\$ 16,500,000	Design Completed	06/30/13	07/31/16	D/B
6	1	F-16-EN	DENVER	US 6 ML over BRYANT STREET W SIDE OF I-25		\$ 33,666,000	Design Completed	06/30/13	07/31/16	D/B
6	1	E-17-AH	DENVER	ON 40TH AVE W of SH 2 ML over BNSF RR		\$ -	No Action Proposed	--	--	Transfer out of CBE
6	1	E-17-EW	DENVER	I 70 ML EBND over UP RR; W of QUEBEC STREET		TBD	Not Programmed	TBD	TBD	TBD
6	1	F-16-BM	DENVER	SH 88 ML over RR, LAKEWOOD GULCH		\$ -	Construction Complete	--	--	Construction Complete
6	1	E-17-FX	DENVER	I 70 ML over US 6, RR, CITY ST		TBD	Not Programmed	TBD	TBD	TBD
6	1	E-17-DF	DENVER	I 70 ML WBND over UP RR; W of QUEBEC STREET		TBD	Not Programmed	TBD	TBD	TBD
6	1	E-17-JP	DENVER	I 70 ML over HAVANA ST, UP RR		\$ 32,959,000	In Design	02/01/14	09/01/15	D/B
6	1	F-16-OG	DENVER	RAMP to I 25 NBND over US 6 ML		\$ -	Construction Complete	--	--	CDOT Maintenance
6	1	E-17-KR	DENVER	I 270 ML EBND over I 70 ML		TBD	Not Programmed	TBD	TBD	TBD
1	1	G-16-B	DOUGLAS	US 85 ML over DRAW; COOK RANCH to LOUVIERS		\$ 3,262,000	In Construction	10/19/12	09/27/13	D-B-B
1	1	G-16-C	DOUGLAS	US 85 ML over DRAW; COOK RANCH to LOUVIERS		See G-16-B	In Construction	10/19/12	09/27/13	D-B-B
1	1	G-17-A	DOUGLAS	US 85 ML over SAND CREEK		\$ 3,088,000	In Design	TBD	TBD	Design to be Shelved
3	3	F-09-H	EAGLE	US 6 ML over EAGLE RIVER E of EAGLE		\$ 4,508,000	Construction Complete	07/20/11	05/18/12	D-B-B
3	3	F-08-F	EAGLE	I 70 SERVICE RD over COLORADO RIVER (SR) N. of DOTSERO INT.		\$ 11,816,000	In Construction	09/04/12	10/23/13	CMGC
3	3	F-11-AC	EAGLE	I 70 ML EBND over US 6, RR, EAGLE RIVER E of JCT SH 131		\$ 23,393,000	In Design	10/11/14	03/26/16	D-B-B w/ A+B bid
3	3	F-11-AB	EAGLE	I 70 ML WBND over US 6, RR, EAGLE RIVER E of JCT US 24		See F-11-AC	In Design	10/11/14	03/26/16	D-B-B w/ A+B bid
3	3	F-10-L	EAGLE	I 70 ML EBND over US 6, RR, EAGLE RIVER		TBD	Not Programmed	TBD	TBD	TBD
3	3	F-11-AO	EAGLE	I 70 ML EBND over TIMBER CREEK		TBD	Not Programmed	TBD	TBD	TBD
2	2	H-18-A	EL PASO	US 24 ML over BLACK SQUIRREL CREEK W of PEYTON		\$ 3,495,000	Construction Complete	11/15/11	08/17/12	D-B-B
2	2	I-17-AE	EL PASO	US 24 ML EBND over FOUNTAIN CREEK		See H-16-K	Construction Complete	08/04/10	10/21/10	Construction Complete
2	2	H-17-M	EL PASO	I 25 ML over DRAW		\$ -	In Design	03/01/13	12/31/14	D/B
2	2	I-18-G	EL PASO	US 24 ML over DRAW E of FALCON		\$ -	Construction Complete	--	--	Construction Complete
2	2	J-18-S	EL PASO	I 25 ML NBND over DRAW S of FOUNTAIN		\$ 1,151,000	Construction Complete	02/20/12	08/17/12	Streamlined D/B
2	2	J-18-T	EL PASO	I 25 ML NBND over DRAW S of FOUNTAIN		See J-18-S	Construction Complete	02/20/12	08/17/12	Streamlined D/B
2	2	I-17-O	EL PASO	I 25 SERVICE RD over PINE CREEK S of JCT SH 56		\$ 4,279,000	In Design	05/17/14	12/19/14	D-B-B
1	1	G-21-B	ELBERT	I 70 FRONTAGE RD over DRAW (SR)		\$ 1,539,000	Construction Complete	01/28/13	05/23/13	D-B-B
1	1	G-21-Y	ELBERT	I 70 BUSINESS SPUR over I 70 ML		\$ -	No Action Proposed	--	--	--
2	2	K-16-K	FREMONT	SH 120 ML over RR, ARKANSAS RIVER E of PORTLAND		\$ 6,133,000	In Construction	10/08/12	10/31/13	D-B-B
2	2	J-15-B	FREMONT	SH 9 ML over CURRANT CREEK NW of JCT US 50		\$ 1,857,000	Construction Complete	05/04/11	10/31/11	Modified D/B
2	2	K-16-S	FREMONT	SH 120 ML over DRAW, UP RR E of FLORENCE		\$ 5,195,000	Design Completed	01/01/14	08/31/14	D-B-B
2	2	K-16-Q	FREMONT	SH 120 ML over HARDSCRABBLE CREEK		\$ -	Construction Complete	--	--	Construction Complete
2	2	K-14-J	FREMONT	US 50 ML over DRAW, near COTOPAXI		\$ 2,668,000	In Design	02/10/14	09/30/14	D-B-B
2	2	K-16-W	FREMONT	SH 67 ML over DRAW		\$ -	No Action Proposed	--	--	--
2	2	K-14-B	FREMONT	US 50 ML over OAK CREEK		TBD	Not Programmed	TBD	TBD	TBD
3	3	F-07-A	GARFIELD	SH 82 ML over I 70 ML, COLORADO RVR, RR GLENWOOD SPRINGS		\$ 85,871,000	In Design	06/13/15	11/20/17	CMGC
3	3	F-05-L	GARFIELD	I 70 ML WBND over COLORADO RIVER		TBD	Not Programmed	TBD	TBD	TBD
3	3	F-05-C	GARFIELD	SH 13 ML over RIFLE CREEK		TBD	Not Programmed	TBD	TBD	TBD
3	3	D-13-A	GRAND	US 34 ML over N FK COLORADO RIVER		TBD	Not Programmed	TBD	TBD	TBD
3	3	J-09-C	GUNNISON	US 50 SERVICE RD over GUNNISON RVR OVERFLOW (SR) W. SIDE of GUNNISON		\$ 2,716,000	Construction Complete	08/29/11	08/31/12	D-B-B
3	3	J-09-D	GUNNISON	US 50 SERVICE RD over GUNNISON RVR (SR) W. SIDE of GUNNISON		See J-09-C	Construction Complete	08/29/11	08/31/12	D-B-B
3	3	J-09-G	GUNNISON	SH 114 ML over TOMICHI CREEK		\$ -	Construction Complete	--	--	Construction Complete
2	2	N-17-N	HUERFANO	I 25 ML NBND over MISSOURI CREEK		\$ 2,522,000	Construction Complete	01/27/11	09/01/11	Construction Complete
2	2	O-16-A	HUERFANO	SH 12 ML over CUCHARAS RIVER S of LA VETA		See P-17-H	Construction Complete	02/19/12	11/15/12	Modified D/B

List of FASTER Eligible Bridges
Q4-FY2013

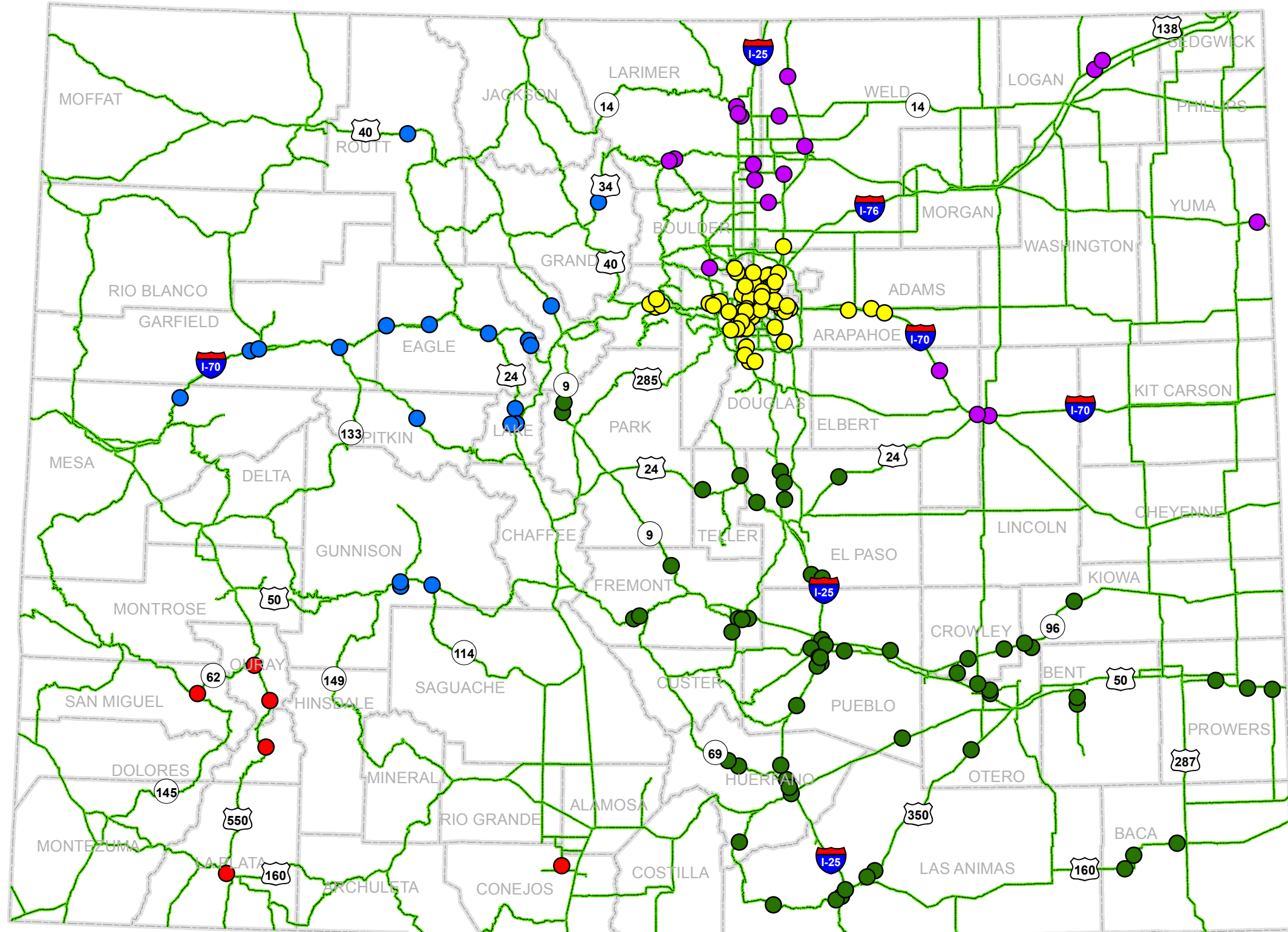
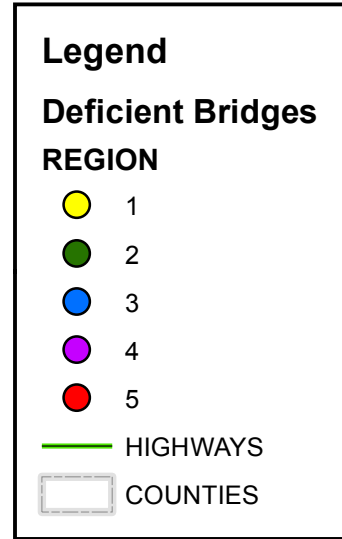
Region	2013 Regions	Original Bridge Number	County	Facility Carried over	Featured Intersection	Budget	Status	Construction Start Date	Construction Completion Date	Project Delivery Method
2	2	N-16-L	HUERFANO	SH 69 ML over	TURKEY CREEK	\$ 2,475,000	Construction Complete	06/22/11	07/15/11	Construction Complete
2	2	N-17-AD	HUERFANO	I 25 ML SBND over	US 160 ML, RR SPUR	\$ -	No Action Proposed	--	--	--
2	2	M-16-P	HUERFANO	SH 69 ML over	MILLIKEN ARROYO	\$ 3,883,000	In Design	10/31/13	08/31/14	D-B-B
2	2	N-17-C	HUERFANO	I 25 BUS RT over	SULL CREEK	\$ 3,139,000	In Design	09/30/13	04/01/14	D-B-B
2	2	N-17-BN	HUERFANO	I 25 ML SBND over	CO RD 640, BUTTE CREEK	TBD	Not Programmed	TBD	TBD	TBD
2	2	N-17-S	HUERFANO	I 25 ML NBND over	CO RD 103, BUTTE CREEK	TBD	Not Programmed	TBD	TBD	TBD
6	1	F-16-CS	JEFFERSON	SH 121 ML-WADSWORTH over	BEAR CREEK N OF 285	\$ 7,656,000	In Construction	03/26/12	07/31/13	D-B-B
6	1	F-16-FL	JEFFERSON	US 6 ML over	SH 95 ML/SHERIDAN AVE.	\$ 14,279,000	In Construction	01/03/12	07/06/13	D-B-B
6	1	F-16-AM	JEFFERSON	US 285 ML SBND over	SH 121 ML	\$ 47,396,000	Construction Complete	08/31/10	07/31/11	Construction Complete
6	1	F-16-AY	JEFFERSON	US 285 ML NBND over	SH 121 ML	See F-16-AM	Construction Complete	08/31/10	07/31/11	Construction Complete
6	1	F-16-I	JEFFERSON	US 285 ML SBND over	PIERCE STREET	See F-16-AM	Construction Complete	08/31/10	07/31/11	Construction Complete
6	1	E-16-FX	JEFFERSON	WASHINGTON STREET over	SH 58 ML	\$ 6,097,000	Construction Complete	02/20/08	11/02/09	Construction Complete
6	1	E-16-HI	JEFFERSON	SH 58 ML over	CO.RD,RR SPUR	\$ 9,151,000	Construction Complete	--	--	Construction Complete
6	1	E-16-HA	JEFFERSON	SH 58 ML over	FORD STREET, WASH	\$ 6,736,000	In Construction	06/04/13	05/28/14	D-B-B
6	1	F-16-ER	JEFFERSON	US 6 ML over	GARRISON STREET	\$ 13,200,000	In Design	07/01/14	09/30/15	D-B-B
2	2	K-23-B	KIOWA	SH 96 ML over	DRAW	\$ 3,590,000	Construction Complete	08/18/10	09/21/11	Construction Complete
2	2	K-23-C	KIOWA	SH 96 ML over	DRAW	See K-23-B	Construction Complete	08/18/10	09/21/11	Construction Complete
2	2	K-24-A	KIOWA	SH 96 ML over	DRAW	See K-23-B	Construction Complete	08/18/10	09/21/11	Construction Complete
5	5	O-05-AQ	LA PLATA	US 160 ML over	ANIMAS RIVER	\$ 806,000	Construction Complete	07/26/10	11/23/10	Construction Complete
3	3	G-11-F	LAKE	US 24 ML over	UP RR	\$ 6,892,000	Construction Complete	12/30/10	11/09/11	Construction Complete
3	3	H-11-D	LAKE	US 24 ML over	CALIFORNIA GULCH	\$ -	Construction Complete	07/26/12	11/02/12	Construction Complete
3	3	H-11-F	LAKE	US 24 ML over	CALIFORNIA GULCH	\$ -	Construction Complete	07/26/12	11/02/12	Construction Complete
4	4	B-16-AE	LARIMER	US 287 ML over	DRAW N of JCT SH 1	\$ 3,965,000	Construction Complete	07/25/11	05/01/12	D-B-B
4	4	B-16-D	LARIMER	SH 14 ML over	CACHE LA POUFRE RIVER E of JCT US 287	\$ 14,630,000	In Design	12/02/13	05/30/15	D-B-B
4	4	C-15-I	LARIMER	US 34 ML over	BIG THOMPSON RIVER	\$ 5,363,000	Construction Complete	08/17/09	06/30/10	Construction Complete
4	4	C-15-J	LARIMER	US 34 ML over	BIG THOMPSON RIVER	See C-15-I	Construction Complete	08/17/09	06/30/10	Construction Complete
4	4	C-17-EL	LARIMER	I 25 ML over	DRAW	\$ -	No Action Proposed	--	--	--
4	4	B-16-EU	LARIMER	COUNTY ROAD 48 over	I 25 ML	TBD	Not Programmed	TBD	TBD	TBD
2	2	P-17-H	LAS ANIMAS	SH 12 ML over	PURGATOIRE RIVER NW of WESTON	\$ 2,865,000	Construction Complete	02/19/12	11/15/12	Modified D/B
2	2	O-19-H	LAS ANIMAS	US 350 ML over	PURGATOIRE RIVER NE of JCT US 160	\$ 4,033,000	In Construction	04/29/13	12/31/13	D-B-B
2	2	P-18-B	LAS ANIMAS	I 25 ML NBND over	PURGATOIRE RIVER	\$ -	Construction Complete	--	--	Construction Complete
2	2	P-18-S	LAS ANIMAS	I 25 ML SBND over	PURGATOIRE RIVER	\$ -	Construction Complete	--	--	Construction Complete
2	2	O-19-J	LAS ANIMAS	US 350 ML over	DRAW S of MODEL	\$ 3,387,000	Construction Complete	12/03/12	06/18/13	D-B-B
2	2	P-19-AD	LAS ANIMAS	SH 239(CO RD 75) ML over	IRRIGATION CANAL in TRINIDAD	See O-19-J	Construction Complete	12/03/12	06/18/13	D-B-B
2	2	P-23-A_MINOR	LAS ANIMAS	US 160 ML over	SMITH CANYON	\$ 1,827,000	In Design	09/16/13	12/31/13	D-B-B
1	4	G-22-J	LINCOLN	US 24 ML over	DRAW E of LIMON	\$ 1,045,000	Construction Complete	05/02/11	08/24/11	D-B-B
4	4	A-24-C A-26-F	LOGAN SEDGWICK	US 138 ML over	DITCH/DRAW	\$ 869,000	Construction Complete	10/01/10	12/15/10	Construction Complete
3	3	G-03-Q	MESA	I 70 ML WBND over	COLORADO RIVER OVERFLOW	TBD	Not Programmed	TBD	TBD	TBD
2	2	L-22-O	OTERO	SH 266 ML over	HOLBROOK CANAL NE of ROCKY FORD	\$ 8,369,000	Construction Complete	08/20/12	03/07/13	CMGC
2	2	L-22-E	OTERO	SH 266 ML over	FT LYON STORAGE CANAL NE of ROCKY FORD	See L-22-O	Construction Complete	08/20/12	03/07/13	CMGC
2	2	L-22-K	OTERO	SH 71 ML over	FT LYON CANAL NW of ROCKY FORD	See L-22-O	Construction Complete	08/20/12	03/07/13	CMGC
2	2	M-21-D	OTERO	US 350 ML over	DRAW SW of LA JUNTA & TIMPAS	\$ 1,959,000	Construction Complete	10/19/11	05/18/12	D-B-B
2	2	L-22-L	OTERO	SH 71 ML over	ARKANSAS RIVER	TBD	Not Programmed	TBD	TBD	TBD
5	5	L-05-B	OURAY	SH 62 ML over	UNCOMPAGRE RIVER SHERMAN ST in RIDGWAY	\$ 8,649,000	Construction Complete	04/24/12	11/09/13	D-B-B
5	5	L-06-A	OURAY	US 550 ML over	BEAR CREEK	\$ 5,850,000	Construction Complete	07/26/10	10/24/11	Construction Complete
1	2	G-12-L	PARK	SH 9 ML over	BUCKSKIN GULCH in ALMA	\$ 322,000	Construction Complete	9/5/11	12/29/11	D-B-B
1	2	G-12-C	PARK	SH 9 ML over	PLATTE GULCH	TBD	Not Programmed	TBD	TBD	TBD
3	3	H-09-B	PITKIN	SH 82 ML over	CO RD, CASTLE CREEK	\$ 982,000	Construction Complete	01/27/11	07/21/11	Construction Complete

List of FASTER Eligible Bridges
Q4-FY2013

Region	2013 Regions	Original Bridge Number	County	Facility Carried over	Featured Intersection	Budget	Status	Construction Start Date	Construction Completion Date	Project Delivery Method
2	2	L-28-F	PROWERS	SH 89 ML over ARKANSAS RIVER	S of HOLLY	\$ 6,370,000	Construction Complete	02/16/11	12/01/11	D-B-B
2	2	L-27-S	PROWERS	US 50 ML over DRAW	E of LAMAR	See L-28-C	In Design	10/21/13	09/30/14	D-B-B
2	2	L-28-C	PROWERS	US 50 ML over BNSF RR	E of GRANADA	\$ 6,307,000	In Design	10/21/13	09/30/14	D-B-B
2	2	K-18-AX	PUEBLO	125 ML NBND over US 50 Bus. Rte.		\$ 7,000,000	In Design	04/06/14	12/15/15	D/B
2	2	K-18-CL	PUEBLO	125 ML SBND over NP RR, ILEX ST, BENNET ST	S of JCT SH 96	\$ 41,172,000	In Design	04/06/14	12/15/15	D/B
2	2	K-18-CK	PUEBLO	125 ML NBND over NP RR, ILEX ST, BENNET ST	N of JCT SH 50 E	See K-18-CL	In Design	04/06/14	12/15/15	D/B
2	2	K-18-R	PUEBLO	US 50 BUS EBND over ARKANSAS RIVER		\$ 4,600,000	In Design	04/06/14	12/15/15	D/B
2	2	K-18-Z	PUEBLO	SH 96 ML over RDWY, RR, ARKANSAS RVR		\$ -	Construction Complete	11/07/07	04/01/11	Construction Complete
2	2	L-18-AQ	PUEBLO	NORTHERN AVE over I 25 ML		\$ 3,175,000	In Design	04/06/14	12/15/15	D/B
2	2	L-18-M	PUEBLO	125 ML NBND over INDIANA AVE		\$ 2,475,000	In Design	04/06/14	12/15/15	D/B
2	2	L-18-W	PUEBLO	125 ML SBND over INDIANA AVE		See L-18-M	In Design	04/06/14	12/15/15	D/B
2	2	L-19-C	PUEBLO	US 50 BUS RT WBND over ST CHARLES RIVER		\$ 2,957,000	Construction Complete	10/16/09	07/22/10	Construction Complete
2	2	M-17-R	PUEBLO	125 ML over DRAW		\$ -	Construction Complete	--	--	Construction Complete
2	2	M-20-A	PUEBLO	SH 10 ML over SAUNDERS ARROYO		\$ 2,000,000	Construction Complete	--	--	Construction Complete
2	2	L-18-AU	PUEBLO	MESA AVE over I 25 ML		\$ -	In Design	04/06/14	12/15/15	D/B
2	2	K-17-F	PUEBLO	SH 96 ML over RUSH CREEK		TBD	Not Programmed	TBD	TBD	TBD
3	3	C-09-C	ROUTT	US 40 ML over E FORK ELK RIVER	W of STEAMBOAT SPGS	\$ 6,559,000	In Construction	02/28/13	11/15/13	D-B-B
5	5	M-06-K	SAN JUAN	US 550 ML over MINERAL CREEK		\$ 3,652,000	Construction Complete	08/17/09	06/01/11	Construction Complete
5	5	L-04-B	SAN MIGUEL	SH 145 ML over LEOPARD CREEK	JCT SH 62 - PLACERVILLE	\$ 4,732,000	Construction Complete	05/15/12	12/07/12	D-B-B
1	3	E-12-I	SUMMIT	SH 9ML over BLUE RIVER		TBD	Not Programmed	TBD	TBD	TBD
2	2	H-16-K	TELLER	SH 67 ML over DRAW		\$ 2,616,000	Construction Complete	08/04/10	12/31/10	Construction Complete
2	2	I-15-Y	TELLER	US 24 ML over TWIN CREEK		See H-16-K	Construction Complete	08/04/10	10/21/10	Construction Complete
4	4	C-17-BN	WELD	125 SERVICE RD over LITTLE THOMPSON RIVER	S of JCT SH 56	\$ 3,062,000	Construction Complete	09/04/12	04/12/13	D/B
4	4	D-17-AK	WELD	SH 66 ML over ST VRAIN RIVER	W of PLATTEVILLE	\$ 5,992,000	In Construction	11/05/12	07/15/13	D-B-B
4	4	C-18-BK	WELD	US 85 BYPASS SBND over US 85 BUS RT		\$ -	No Action Proposed	--	--	--
4	4	D-19-A	WELD	176 SERVICE RD over LOST CREEK	SR	\$ -	No Action Proposed	--	--	--
4	4	B-17-L	WELD	SH 14 ML over COALBANK CREEK	W of AULT	\$ 7,450,000	In Construction	02/01/13	05/31/14	D-B-B
4	4	B-17-C	WELD	US 85 ML (NUNN BRIDGE) over UPRR		\$ 7,712,000	In Construction	03/17/13	12/14/13	D-B-B
4	4	C-17-B	WELD	SH 60 ML over SOUTH PLATTE RIVER		TBD	Not Programmed	TBD	TBD	TBD
4	4	D-28-B	YUMA	US 34 ML over N FK REPUBLICAN RIVER	W of LAIRD	\$ 3,475,000	Construction Complete	06/25/12	12/14/12	D-B-B

Colorado State Map of FASTER Eligible Bridges

Q4-FY2013



176 Faster Eligible Bridges