



Colorado Bridge Enterprise

Quarterly Report No. 06 (Q1 FY2013)

December 20, 2012

Introduction

This report is the sixth Quarterly Report (or Report) published in support of the Colorado Bridge Enterprise (CBE or “Program”). This Report outlines progress and accomplishments associated with the Program for work complete during July, August and September of 2012; which coincides with the first quarter of CDOT’s 2013 fiscal year (or Q1 FY2013). Detailed information regarding the FASTER (Funding Advancements for Surface Transportation and Economic Recovery) legislation, program development activities, bond program, previous significant milestones and achievements can be found in the Program Annual Reports and previous Quarterly Reports viewable on CDOT website at www.coloradodot.info/programs/BridgeEnterprise.

During Q1 FY2013, the Program primarily focused on the delivery of bridge projects partially or fully funded by the \$300M bond program. The following is an itemization of significant achievements which are discussed in further detail later in the report:

- Completed 5th Bridge Enterprise Quarterly Report for Q4 FY2012 (April, May and June of 2012).
- Updated Quarterly Bond Allocation Plan reflective of program financial performance for work complete through June 30, 2012; presented at the September 2012 Board of Director’s regular meeting.
- Completed monthly updates to the bond program schedule for work complete in July, August and September of 2012.
- Completed Final Draft of a 10-Year Bridge Program Plan.
- Completed Accelerated Bridge Construction (ABC) decision making tool.
- Negotiated and accepted Construction Manager/General Contractor (CM/GC) Guaranteed Maximum Price (GMP) for Region 2 Rocky Ford and Region 3 Dotsero Bridge projects.
- Issued Letters of Interest for future Design / Build projects and CM/GC preconstruction services.
- Successfully closed IRS audit of \$40M Bank of America Loan.
- Continued evaluation of FASTER eligible bridges for potential inclusion in the bond program.
- Finalized improvements to Construction Manager / General Contractor (CM/GC) contract delivery RFP template and CBE Guidance document.
- Incorporated the newly eligible list of “poor” rated bridges (through September 2012) as published by CDOT Staff Bridge; added 3 FASTER eligible bridges.
- Major Project/Program Strategic Planning and Coordination.

Program Highlights

There are currently 82 bridges that are partially or fully funded to be completed as part of the \$300M bond program. The majority of the bond funded bridge projects can be classified as complete, in construction or are waiting to go to construction (49 in total); as compared to the number of bridges in the pre-construction or design phase (33 in total).

Projects in the preconstruction phase are primarily focused on the completion of the PS&E’s (Plans, Specifications and Estimates). In conjunction with this, CDOT specialty groups are diligently working on completing the requisite approvals and permits associated with environmental, railroad, and utility clearances or relocations; securing the necessary Right-of-Way (ROW); and finalizing intergovernmental agreements (as required), etc. Per the current program schedule, construction work is projected to remain at a steady pace through calendar year 2012, increased activity during calendar year 2013, and will not begin to drop off until late calendar year 2014.

As of the end of September 2012, there were a total of one-hundred and sixty (164) bridges considered eligible to receive FASTER funding. The progress status associated with these 164 structures is itemized in Table 1 below.

Table 1. Project Status as of Q1 FY2013

Project Phase	Bridge Number
Future Projects	29
In Design Phase	42
In Construction Phase	26
Projects Complete ⁽¹⁾	60
No Action Proposed	7
Total ⁽²⁾⁽³⁾	164

- (1) Reference Appendix A for List of Completed Bridges
- (2) Reference Appendix B for complete List of FASTER eligible bridges
- (3) Reference Appendix C for Colorado State map of FASTER eligible bridges

Other relevant bridge and financial statistics are as follows:

- Approximately 52% of FASTER eligible bridges are now in construction or completed.
- Approximately 26% of FASTER eligible bridges are currently in design.
- Only 18% of FASTER eligible bridges remain to be programmed (defined as Future Projects); does not include bridges classified as “No Action Proposed”.
- Additionally, \$80.0M and \$112.2M of bond program funds have been expended or encumbered to date, respectively (reference Table 8).

The program schedule progress and performance information presented in Table 2 shows the value of the work complete through Q1 FY2013 as compared to what had been planned to be completed per the baseline schedule. The earned value of work complete to date was \$169.9M as compared to the planned value of the work scheduled to be completed at \$196.0M; which indicates that the program was approximately 13% behind the plan.

Note - Earned Value at the lowest level is attained by multiplying the percent complete of a project activity by its respective budget. Earned value is rolled-up from the project level to the region level, and then again rolled-up from the region level to the program level.

Table 2. Q1 FY2013 Earned Value by CDOT Region and Program (\$)

CDOT Region	Planned Value of Work through September 30 th	Earned Value of Work through September 30 th	Schedule Variance
1	3,399,686	4,373,679	973,993
2	48,578,787	34,044,567	(14,534,220)
3	15,059,967	17,015,909	1,955,942
4	15,780,602	13,287,163	(2,493,439)
5	4,323,655	5,731,965	1,408,310
6	108,836,196	95,439,766	(13,396,430)
Total	195,978,892	169,893,049	(26,085,843)

The Program has implemented cost and schedule Key Performance Indicators (or KPIs) to track, monitor and report on program performance. As part of the monthly schedule update, a Schedule Performance Index (or SPI) is calculated for each project included within the bond program. The SPI is also calculated and reported at the regional and program levels. The SPI is based upon earned value which compares actual progress to planned performance based upon work complete to date. The program SPI for work complete through September 2012 was 0.87; which represents a 0.03 decrease from the previous Quarterly Report (or June 2012 SPI at 0.90). The program has established an SPI goal during execution of greater than or equal to 0.90.

Program Activities and Accomplishments in Q1 FY2013

The Program’s main activities and significant accomplishments during Q1 FY2013 are briefly described below.

FASTER eligible bridges

Based on the quarterly review of “poor” rated bridges, CDOT Staff Bridge identified four additional FASTER eligible structures as itemized in Table 3 below.

Table 3. Newly Eligible FASTER bridges

Region	Original Bridge Number	Facility Carried over Featured Intersection
2	K-16-W	SH 67 ML over DRAW
3	D-13-A	US 34 ML over N FORK COLORADO RIVER
3	H-11-D	US 24 ML over CALIFORNIA GULCH
3	H-11-F	US 24 ML over CALIFORNIA GULCH

Pre-Construction Phase

There were 2 projects that began the pre-construction phase (e.g., which may include ROW, environmental clearances, design, etc.) as itemized in Table 4 below. These projects were added to the bond program.

Table 4. Projects that began the design phase

Region	Original Bridge Number	Facility Carried over Featured Intersection
1	G-17-A	US 85 ML over SAND CREEK
2	I-17-O	I 25 SERVICE RD over PINE CREEK

Projects that went to AD (Advertisement for Construction)

There were four projects (or five bridges) that went to AD during the period as itemized in Table 5 below.

Table 5. Projects / Bridges that went to AD

Region	Original Bridge Number	Facility Carried over Featured Intersection
2	H-17-M	I 25 ML over DRAW
2	O-19-J	US 350 ML over DRAW
2	P-19-AD	SH 239 (CO RD 75) ML over IRRIGATION CANAL
4	D-17-AK	SH 66 ML over ST VRAIN RIVER
6	F-16-F	US 85 (SANTA FE) ML NBND over DAD CLARK GULCH

Completed Projects

There were five projects (or nine bridges) that were completed during the period as itemized in Table 6 below.

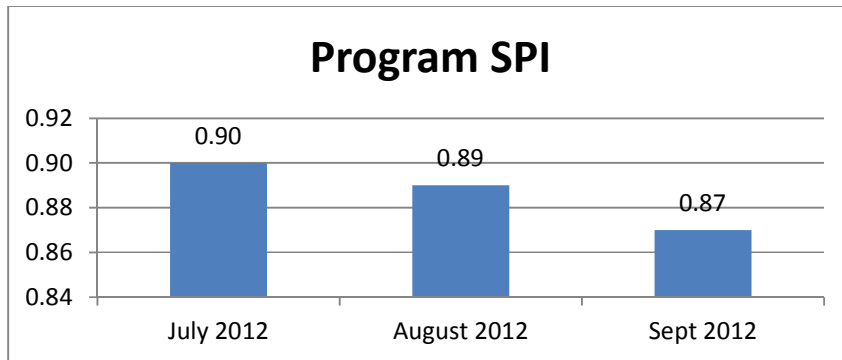
Table 6. Projects / Bridges Completed

Region	Original Bridge Number	Facility Carried over Featured Intersection
2	H-18-A	US 24 ML over BLACK SQUIRREL CREEK
2	J-18-S	I 25 ML NBND over DRAW
2	J-18-T	I 25 ML NBND over DRAW
3	J-09-C	US 50 SERVICE RD over GUNNISON RVR OVERFLOW (SR)
3	J-09-D	US 50 SERVICE RD over GUNNISON RVR (SR)
6	E-17-GE	I 70 ML WBND over SAND CREEK
6	E-17-BY	I 70 ML EBND over SAND CREEK
6	E-17-GM	I 76 ML EBND over SOUTH PLATTE RIVER
6	E-17-GL	I 76 ML WBND over SOUTH PLATTE RIVER

Program Schedule Update

The bond program schedule was updated three times during the period; for work complete in July, August and September of 2012. This includes publishing the monthly updated program bar-chart schedule, cost and schedule database, and list of projects with an SPI < 0.90. This information was consolidated and distributed to the Regional Transportation Director's (or RTD's) and their respective program engineers. The SPI's reported for each month during the quarter are graphically depicted on Figure 1 below.

Figure 1. Bond Program SPI Reported by Month



Schedule Change Control Board

The Schedule Change Control Board conducted three meetings during the period: July 3rd, August 9th, and September 13th. The SCCB meetings were attended by senior CDOT HQ staff including: Tim Harris (Chief Engineer), Ben Stein (CFO), Herman Stockinger (government relations), Scott McDaniel (Director of Staff Branches), Regional RTD's and program engineers. The purpose of the SCCB meetings was two-fold: (1) document and review projects with an SPI < 0.90, and (2) allow the RTD's an opportunity to petition the SCCB to make adjustments to a project's baseline schedule when the schedule logic does not reflect current project delivery and is artificially impacting the SPI calculation. Formal meeting minutes were published with a list of attendees and an itemized list of SCCB approved changes; subject changes were incorporated into the program schedule in the subsequent schedule update

Note - the SCCB policy is not intended to provide relief to poorly performing projects. Any baseline adjustments must properly document project issues, and justifiable rationale on proposed adjustments including recommendations to improved project delivery, issues mitigation, required supplemental staffing, and proposed recovery schedules (as necessary).

Completed Final Draft of a 10-Year Bridge Program Plan

At the request of the CBE Executive Director Hunt, the program has developed a 10-Year Bridge Program Plan. The Plan was cooperatively developed by CBE staff and program manager, CDOT Finance and Accounting personnel, with financial input from CBE's financial and bond consultants (Stifel Nicolaus and Kutak Rock LLP). A draft copy was presented to senior CDOT staff (i.e., Chief

Engineer and Chief Financial Officer) and will be presented to the CBE Executive Director Hunt. The report is scheduled to be presented to the CBE Board at the November workshop.

Issued Development of Accelerated Bridge Construction (ABC) Decision Making Tool

The Bridge Enterprise program manager in collaboration with CDOT regional staff, Staff Bridge and representatives from industry partners ACEC and CCA issued a decision making tool to help quantify when to deploy accelerated bridge construction (or ABC) techniques as compared to conventional construction methodologies. The guidance policy (which is intended to be deployed CDOT wide) is in alignment with FHWA's ABC Analytical Hierarchy Process published in March of 2012 and Every-Day-Counts initiatives.

Major Project/Program Strategic Planning and Coordination

CBE continues to work intimately with various CDOT project teams on coordination, funding eligibility, and strategic planning issues associated with the following large projects:

- Region 2: Rocky Ford Bridges. Successful negotiation and acceptance of CM/GC GMP. This was the first time CDOT/CBE implemented CM/GC contract delivery on a transportation related project.
- Region 2: Ilex Bridge Replacement project. Issued Letter of Interest for Design / Build Contractor.
- Region 3: SH 82 Grand Ave Bridge in Glenwood Springs. Continued support at Project Leadership Team (PLT), Project Working Group (PWG), Stakeholders Working Group meetings; supported "open letter" to community; reviewed draft documents; attended value engineering meeting and public involvement meetings, and presentation to Glenwood Springs City Council. Project team announced selection of the preferred alternative to be advanced via the environmental clearance process. Project issued letter of Interest for GM/GC preconstruction services.
- Region 3: Dotsero Bridge. Successful negotiation and acceptance of CM/GC GMP.
- Region 6: Pecos Street over I-70 ML. Supported GMP contract negotiations and CM/GC delivery, work with FHWA to plan a national project showcase and worked with project team to develop monthly earned value goals and reporting.
- Region 6: 6th Avenue bridges. Strategic planning associated with future Design / Build project which includes three BE bridges (over BNSF RR, So. Platte River and Bryant Street), coordinate BNSF crossing, coordinate with OCIP feasibility study, coordinate with FHWA for funding eligibility and confirm funding allocations, and attendance at weekly project meetings as part of the Project Management Team (PMT). Project team issued Letters of Interest for Design / Build contractor and short-listed to three teams.
- Region 6: I-70 viaduct replacement project. Initiated bi-weekly project management meeting with consultant. CBE staff met with project team, design consultant and FHWA on a preliminary funding eligibility review of future FASTER work scope.

Quarterly Program Reports

Q4 FY2012 Quarterly Report. Bridge Enterprise completed the quarterly report highlighting program progress for work complete in April, May and June of 2012 which coincided with CDOT's fourth quarter of fiscal year 2012 (or Q4 FY2012).

Q4 FY2012 Quarterly Bond Program Update. The \$300M bond program allocation plan was updated for work complete through June 2012. The allocation plan serves two primary purposes: (1) documents that program is on track to spend 85% of bond dollars within 3 years of receipt, and (2) used as a tool to determine the timing and dollar value of subsequent bond issuances. The updated bond report was presented to senior CDOT staff including the Executive Director and presented at the September Board of Director's regular meeting.

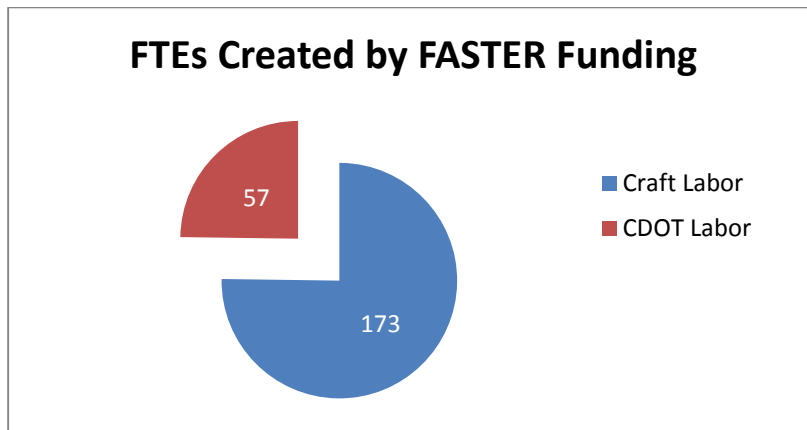
Continued Process Improvements to Railroad project coordination

As a follow-up to the programmatic agreement executed with the UPRR, a similar programmatic agreement is being pursued with the BNSF railroad. In addition, CDOT HQ personnel (Safety and Traffic Engineering) continue to explore HQ and Regional process improvements to minimize coordination issues with bridge projects that cross railroads.

FASTER Job Creation

Jobs created by FASTER funded projects are categorized into three areas: (1) construction craft related hours / FTE's (full time equivalents) from construction projects, (2) CDOT personnel supporting the program, and (3) professional labors hours from private-industry consultant hours (primarily design and construction engineering/management). During the period, approximately 82,949 craft labor hours were expended on FASTER projects. A total of 1,817 contractor employees charged time against FASTER projects or subject hours supported approximately 173 full-time craft positions. According to CDOT payroll records, 27,236 labor hours were expended on FASTER projects which correlates into approximately 57 FTE's. Reference Figure 2 below for craft and CDOT labor hours reported by FTE. The program is currently in the process of establishing a methodology to collect consultant hours.

Figure 2. FASTER Job Creation



Resolutions Approved by the Bridge Enterprise Board

The following is a brief overview of resolutions passed by the Bridge Enterprise BOD or significant topics discussed during Q1 FY2013 as itemized in Table 7 below.

Table 7. Board Resolution / Significant Topics

July Workshop / BOD Meetings
<ul style="list-style-type: none"> ▪ Adoption of 2nd budget supplement for FY2013 ▪ Resolution to accept Highways for Life Grant for Pecos street over I-70 project ▪ Monthly Progress Report ▪ Project Presentation: Region 2 Rocky Ford Bridges
August BOD Meeting (No workshop)
<ul style="list-style-type: none"> ▪ Monthly Progress Report ▪ Adoption of 3rd budget supplement for FY2013
September BOD Meeting (No workshop)
<ul style="list-style-type: none"> ▪ Election of Officers ▪ Adoption of 4th budget supplement for FY2013 ▪ US 6 Ave Design/Build DBE/ESB public outreach meeting ▪ Q4 FY2012 Allocation Plan Update ▪ Monthly Progress Report ▪ Project Presentation: Region 3 SH82 Grand Ave Bridge Replacement Project

Other Significant Achievements

- The CBE program manager and CDOT Director of Staff Branches co-presented at the Western Association of State Highway Officials (WASHTO) conference highlighting CBE innovations from a project/program delivery perspective.
- CBE continues to review existing NPS-design consultant contracts as it relates to current / projected usage and potential amendments to extend contract time and contract capacity.
- CBE in concert with CDOT contracts and market analyses is currently assessing the need for future FASTER NPS design based contracts.
- The FY2012 program management task order was extended through August 31st to utilize unspent dollars, and the FY2013 program management task order was executed with the program manager (AECOM).
- Bridge Enterprise and CDOT staff continues to support (as requested) the State Attorney General office in regards the pending FASTER lawsuit.
- Bridge Enterprise staff assisted CDOT Finance and Accounting in responding to and successfully closed out the IRS audit of the Bank of America \$40M loan.
- CDOT Risk Management group continues to work with Insurance broker, Lockton, Inc., on the viability of deploying an OCIP / ROCIP insurance program.
- Assisted CDOT government relations on providing requested documents for presentation to State Legislature and Joint Transportation committee.
- Bridge Enterprise staff met with Regional staff to facilitate adding unprogrammed FASTER eligible bridges to the bond program.
- CBE program manager in concert with CDOT F&A staff continue to tracking bond expenditures as compared to forecasted bond spending and identify factors impacting bond spending.

- Examining current CDOT policy that may contribute to over-estimating of forecasted project costs and recommended policy changes.
- Bridge Enterprise staff assisted ICAC in developing an execution work-flow diagram outlining internal CDOT roles and responsibilities and necessary deliverables to secure the requisite approval from CDOT’s Chief Engineer.
- Developed and issued a draft work-flow diagram outlining requisite steps associated with STIPing (Statewide Transportation Improvement Program) Bridge Enterprise projects.
- Participated in 12 month Bridge Enterprise Board of Directors advanced calendar planning effort with CDOT government relations.
- Presented BE program update at quarterly ACEC/CDOT sub-committee meeting.
- Continue to support (as requested) CDOT’s “project pipeline” and “project portfolio” initiatives.
- CBE staff continues to supported CDOT’s Public Relations and Government Relations on ongoing updates to the CDOT/Bridge Enterprise website and monthly “dash-board” performance metric updates.

Financial Information

The following is a program overview of financial statistics as of September 30, 2012.

- The program has multiple funding sources including: proceeds from the Build America Bond program, FASTER Bridge dollars which is commonly referred to as the statewide pay-go program (collected yearly revenues from vehicle registrations), Bank of America Loan, and Other Funds which is primarily Federal-aid BR funding.
- From program inception (or life-to-date), a total of \$442.2M has been budgeted (all funding sources), and Expenditures and Encumbrances are \$160.5M and \$137.4M (all funding sources), respectively. Reference Table 8 below for details by funding source.
- For comparison purposes, the totals from the previous quarterly report (Q4 FY2012) have also been reported in the far right column.
- Based upon the \$300M bond program baseline schedule developed in February 2011, approximately \$165.0M of bond dollars were projected to be expended by Q1 FY2013; whereas, actual expenditures were \$80.0M but with \$112.2M in encumbrances.

Table 8. Program Financial Statistics as of September 30, 2012 (\$ in Millions).

	Build America Bonds 2010 A Proceeds	FASTER Bridge	Bank of America Loan	Other Funds	Total Q1 FY2013	Total Q4 FY2012
Budget	\$261.2	\$114.4	\$38.4	\$28.2	\$442.2	\$321.9
Expenditures	\$80.0	\$33.7	\$29.1	\$17.7	\$160.5	\$131.0
Encumbrances	\$112.2	\$15.1	\$2.8	\$7.3	\$137.4	\$119.0

The \$300M bond program currently consists of eighty-two (82) bridges; fifty-two (52) of these bridges are fully funded, and thirty (30) of these bridges are partially funded with current available sources and will require future funding (future bond issuance or other funding) to complete. The estimated total

cost for these eighty-two bridges is approximately \$659.6M. Table 9 below provides an itemization of current funding sources and indicates that \$279.9M of additional future funding will be necessary to complete all bridges. The timing and projected value of any future bond offerings is yet to be determined.

Table 9. Current Bond Allocation Plan (\$ in Millions)

Build America Bonds	FASTER Bridge	Other Funds	Future Bond Issue or Other Funding	Total
\$298.0	\$48.4	\$33.3	\$279.9	\$659.6

Economic Outlook

The following are highlights from project bid data results maintained by CDOT’s Engineering Estimates and Market Analysis (EEMA) group for transportation related projects advertised during the period.

- There were on average 3.94 bidders per project during the period; which was slightly down from 4.24 bidders per project from the previous quarter.
- On average, the low bid on 38 transportation related projects was less than 1-percent higher than the engineer’s estimate.
- There were a total of 5 FASTER projects bid during the period, and on average the low bid was approximately 1.3% higher than the engineer’s estimate.

In addition, EEMA revised how it calculates the Colorado Construction Cost (CCI) Index consistent with FHWA’s “New Cost Estimating Tool” and the National Highway Construction Cost Index (NHCCI). The NHCCI is a measure of the average change over time in the prices paid by state transportation departments for roadway construction materials and services. If the average change over time increases it is called ‘inflation’ if the average price over time decreases it is called ‘deflation’. For the period ending June 2012 (most recent data), the NHCCI was 1.1468 which rose approximately 2.9% from the March 2012 index at 1.1147.

The following economic statistics were reported by the Chief Economist from the Associated General Contractors (AGC) of America as reported by AGC’s Data DIGest. The data provides insight on economic movement month-to-month (e.g., August to September) and from year-over-year (e.g., September 2011 to September 2012).

Producer Price Index (PPI) for inputs to construction industries – a weighted average of all materials used in every type of construction, plus items consumed by contractors such as diesel fuel;

- July. Dropped 0.7% for the month and 0.6% year-over-year, the first 12-month decrease since November 2009 (Vol. 12, No. 33).
- August. Rose 0.9% [for the month] and 1.0% [year-over-year] respectively, reversing a year-over-year decline in July (Vol. 12, No. 37).

- September. Climbed 0.9% for the second consecutive month, following several months of decreases or minimal increases that kept the year-over-year change to a modest 1.7% (Vol. 12, No. 39).

Construction Employment

- July. Increased for the month in 20 states plus D.C., dropped in 28 states and held steady in 2 states. Over the past 12 months, construction employment rose in 18 states plus D.C., declined in 31 states and unchanged in Hawaii (Vol. 12, No. 33). Increased in 123 out of 337 metropolitan areas, declined in 165 and stayed stagnant in 49 (Vol. 12, No. 35).
- August. Increased for the month in 24 states plus D.C., and dropped in 26 states. Over the past 12 months, construction employment rose in 20 states plus D.C., and declined in 30 states (Vol. 12, No. 38). Employment increased from a year earlier in 130 [metropolitan areas], fell in 164, and was stagnant in 43 (Vol. 12, No. 39).
- September. Increased for the month in 22 states plus D.C., and dropped in 28 states. (Vol. 12, No. 40). Declined in 160 out of 337 metropolitan areas, increased in 125 and was stagnant in 52 (Vol. 12, No. 42).

Other

- Construction Spending totaled \$852 billion at a seasonally adjusted annual rate in September, up 0.6% from the upwardly revised August total, up 7.8% from September 2011 and the highest total in 35 months (Vol. 12, No. 42).
- Public construction fell for the third straight month, with declines in two dominant categories: highway and street construction spending, -1.6% in September and -2.4% year-over-year (Vol. 12, No. 42).
- Colorado was ranked 9th in the country in the percent of new construction jobs [5,500] gained at 4.9% year-over-year (September 2011 to September 2012).
- The Greeley, CO metropolitan area was ranked 10th out of 337 metropolitan areas in the percent of new construction jobs [1,200] gained at 11% year-over-year (September 2011 to September 2012). The Denver-Aurora-Broomfield, CO metropolitan areas lead the state with 3,000 net new jobs created or a 4% growth year-over-year.

Based upon the above noted economic indicators, the results at the national level were mixed where increases to construction employment at the state and metropolitan levels continue to lag declines; which is contrasted with notable increases in construction spending offset with declines in public construction spending on highway and street construction projects. However at the state level, Colorado bolstered national gains in construction employment (ranked 9th in Country with a 4.9% growth in new construction jobs) led by the Greeley metropolitan area which ranked 10th out of 337 metropolitan areas with an 11% growth in new construction jobs.

Current List of Completed Bridges

1	F-19-B	ARAPAHOE	US 36 ML over COMANCHE CREEK	Replaced
1	F-14-B	CLEAR CREEK	I 70 FRONTAGE RD over CLEAR CREEK (SR)	Replaced
1	G-22-J	LINCOLN	US 24 ML over DRAW	Replaced
1	G-12-L	PARK	SH 9 ML over BUCKSKIN GULCH	Repaired
2	L-21-U	CROWLEY	SH 96 ML over NUMA DRAIN CANAL	Replaced- minor structure
2	L-22-F	CROWLEY	SH 96 ML over BLACK DRAW	Replaced
2	H-18-A	EL PASO	US 24 ML over BLACK SQUIRREL CREEK	Replaced
2	I-17-AE	EL PASO	US 24 ML EBND over FOUNTAIN CREEK	Repaired
2	I-18-G	EL PASO	US 24 ML over DRAW	Replaced
2	J-18-S	EL PASO	I 25 ML NBND over DRAW	Replaced- minor structure
2	J-18-T	EL PASO	I 25 ML NBND over DRAW	Replaced- minor structure
2	J-15-B	FREMONT	SH 9 ML over CURRANT CREEK	Replaced
2	K-16-Q	FREMONT	SH 120 ML over HARDSCRABBLE CREEK	Replaced
2	N-17-N	HUERFANO	I 25 ML NBND over MISSOURI CREEK	Replaced
2	N-16-L	HUERFANO	SH 69 ML over TURKEY CREEK	Replaced
2	K-23-B	KIOWA	SH 96 ML over DRAW	Replaced
2	K-23-C	KIOWA	SH 96 ML over DRAW	Replaced
2	K-24-A	KIOWA	SH 96 ML over DRAW	Replaced
2	P-18-B	LAS ANIMAS	I 25 ML NBND over PURGATOIRE RIVER	Replaced
2	P-18-S	LAS ANIMAS	I 25 ML SBND over PURGATOIRE RIVER	Replaced
2	M-21-D	OTERO	US 350 ML over DRAW	Replaced
2	L-28-F	PROWERS	SH 89 ML over ARKANSAS RIVER	Replaced
2	K-18-Z	PUEBLO	SH 96 ML over RDWY, RR, ARKANSAS RVR	Replaced
2	L-19-C	PUEBLO	US 50 BUS. RT WBND over ST CHARLES RIVER	Replaced
2	M-17-R	PUEBLO	I 25 ML over DRAW	Repaired
2	M-20-A	PUEBLO	SH 10 ML over SAUNDERS ARROYO	Replaced
2	H-16-K	TELLER	SH 67 ML over DRAW	Replaced
2	I-15-Y	TELLER	US 24 ML over TWIN CREEK	Repaired
3	F-09-H	EAGLE	US 6 ML over EAGLE RIVER	Replaced
3	J-09-C	GUNNISON	US 50 SERVICE RD over GUNNISON RVR OVERFLOW (SR)	Repaired
3	J-09-D	GUNNISON	US 50 SERVICE RD over GUNNISON RVR (SR)	Repaired
3	J-09-G	GUNNISON	SH 114 ML over TOMICHI CREEK	Replaced

Current List of Completed Bridges

3	G-11-F	LAKE	US 24 ML over UP RR	Replaced
3	H-09-B	PITKIN	SH 82 ML over CO RD, CASTLE CREEK	Repaired
4	B-16-AE	LARIMER	US 287 ML over DRAW	Replaced
4	C-15-I	LARIMER	US 34 ML over BIG THOMPSON RIVER	Replaced
4	C-15-J	LARIMER	US 34 ML over BIG THOMPSON RIVER	Replaced
4	A-24-C/A-26-F	LOGAN SEDGWICK	US 138 ML over DITCH/DRAW	Replaced- minor structure
5	O-05-AQ	LA PLATA	US 160 ML over ANIMAS RIVER	Repaired
5	L-06-A	OURAY	US 550 ML over BEAR CREEK	Replaced
5	M-06-K	SAN JUAN	US 550 ML over MINERAL CREEK	Replaced
6	E-16-FP	ADAMS	80TH AVE over US 36 ML	Replaced
6	E-17-AR	ADAMS	SH 7 ML over SOUTH PLATTE RIVER	Replaced
6	E-17-DM	ADAMS	I 76 ML WBND over UP RR	Replaced
6	E-17-DN	ADAMS	I 76 ML EBND over UP RR	Replaced
6	E-17-GL	ADAMS	I 76 ML WBND over SOUTH PLATTE RIVER	Replaced
6	E-17-GM	ADAMS	I 76 ML EBND over SOUTH PLATTE RIVER	Replaced
6	E-17-HG	ADAMS	104TH AVE over I 25 ML	Replaced
6	E-17-HL	ADAMS	I 76 ML EBND over SH 224 ML	Replaced
6	F-16-FY	ARAPAHOE	US 285 ML SBND over SH 88 ML	Replaced
6	F-16-FZ	ARAPAHOE	US 285 ML NBND over SH 88 ML	Replaced
6	E-17-BY	DENVER	I 70 ML EBND over SAND CREEK	Replaced
6	E-17-GE	DENVER	I 70 ML WBND over SAND CREEK	Replaced
6	F-16-BM	DENVER	SH 88 ML over RR, LAKEWOOD GULCH	Replaced
6	F-17-AE	DENVER	SH 30 ML/HAVANA ST over CHERRY CREEK	Replaced
6	E-16-FX	JEFFERSON	WASHINGTON STREET over SH 58 ML	Replaced
6	E-16-HI	JEFFERSON	SH 58 ML over CO. RD,RR SPUR	Replaced
6	F-16-AM	JEFFERSON	US 285 ML SBND over SH 121 ML	Replaced
6	F-16-AY	JEFFERSON	US 285 ML NBND over SH 121 ML	Replaced
6	F-16-I	JEFFERSON	US 285 ML SBND over PIERCE STREET	Replaced

List of FASTER Eligible Bridges

Region	Original Bridge Number	County	Facility Carried over Featured Intersection	Budget	Status	Construction Start Date	Construction Completion Date	Project Delivery Method
1	F-19-AF	ADAMS	COUNTY ROAD over I 70 ML	TBD	Not Programmed	TBD	TBD	TBD
6	E-17-EZ	ADAMS	84TH AVE over I 25 ML	\$ 11,950,000	In Construction	02/24/11	10/17/12	In Construction
6	E-17-GM	ADAMS	176 ML EBND over SOUTH PLATTE RIVER NE of JCT I 270	\$ 14,535,000	Construction Complete	09/12/11	07/23/12	D-B-B w/ A+B bid
6	E-17-GL	ADAMS	176 ML WBND over SOUTH PLATTE RIVER NE of JCT I 270	See E-17-GM	Construction Complete	09/12/11	07/23/12	D-B-B w/ A+B bid
6	E-16-AA	ADAMS	US 287 ML over RR SPUR	\$ 17,117,000	In Design	06/30/14	12/31/15	D-B-B
6	E-16-GQ	ADAMS	SH 95 ML (SHERIDAN BLVD) over UP RR, RR SPUR N of JCT I 70 in WHEATRIDGE	\$ 7,784,000	In Construction	04/24/12	06/30/13	D-B-B
6	E-16-FP	ADAMS	80TH AVE over US 36 ML	\$ 11,360,000	Construction Complete	05/06/10	10/20/11	Construction Complete
6	E-17-ER	ADAMS	SH 44 ML(104TH AVE) over BULL SEEP W of US 85	\$ 10,302,000	In Design	11/05/13	04/30/15	D-B-B with option to convert
6	E-17-CA	ADAMS	SH 44 ML(104TH AVE) over SOUTH PLATTE RIVER W of JCT US 85	See E-17-ER	In Design	11/05/13	04/30/15	D-B-B with option to convert
6	E-17-EX	ADAMS	PEORIA STREET over I 76 ML NE of JCT US 85	\$ 5,928,000	In Design	04/08/13	11/15/13	D-B-B
6	E-17-DC	ADAMS	176 ML EBND over UP RR E of JCT US 85	\$ 12,355,000	In Design	09/15/13	11/30/14	D-B-B
6	E-17-DU	ADAMS	176 ML WBND over UP RR E of JCT US 85	See E-17-DC	In Design	09/15/13	11/30/14	D-B-B
6	E-17-HG	ADAMS	104TH AVE over I 25 ML	\$ 8,537,000	Construction Complete	05/21/09	12/20/10	Construction Complete
6	E-17-AR	ADAMS	SH 7 ML over SOUTH PLATTE RIVER	\$ -	Construction Complete	05/19/09	01/07/11	Construction Complete
6	E-17-DM	ADAMS	176 ML WBND over UP RR	\$ 6,750,000	Construction Complete	--	--	Construction Complete
6	E-17-DN	ADAMS	176 ML EBND over UP RR	\$ -	Construction Complete	--	--	Construction Complete
6	E-17-HL	ADAMS	176 ML EBND over SH 224 ML	\$ -	Construction Complete	--	--	Construction Complete
6	E-17-EP	ADAMS	SH6 DITCH RIDER RD over BURLINGTON CANAL SR	\$ -	No Action Proposed	--	--	--
6	E-17-IC	ADAMS	YORK STREET over I 270 ML	TBD	Not Programmed	TBD	TBD	TBD
1	F-19-B	ARAPAHOE	US 36 ML over COMANCHE CREEK E of STRASBURG	\$ 2,169,000	Construction Complete	04/23/12	06/15/12	D-B-B
6	F-17-F	ARAPAHOE	US 40 ML(E COLFAX) EBND over SAND CREEK E of I-225	\$ 18,737,000	In Design	05/25/13	02/28/15	D-B-B
6	F-17-BS	ARAPAHOE	US 40 ML(E COLFAX) WBND over SAND CREEK E of I-225	See F-17-F	In Design	05/25/13	02/28/15	D-B-B
6	F-16-F	ARAPAHOE	US 85(SANTA FE) ML NBND over DAD CLARK GULCH in LITTLETON	\$ 3,889,000	Design Completed	12/07/12	10/31/13	Streamlined D/B
6	F-17-DM	ARAPAHOE	SH 88 ML/ARAP RD over CHERRY CREEK W OF SH 83(PARKER RD)	\$ 20,853,000	In Design	03/18/13	07/13/15	D-B-B with option to convert
6	F-17-GO	ARAPAHOE	US 40 ML(E COLFAX) EBND over TOLLGATE CREEK W of I-225	\$ 12,992,000	In Design	04/01/14	10/31/15	D-B-B
6	F-16-FY	ARAPAHOE	US 285 ML SBND over SH 88 ML	See F-16-AM	Construction Complete	08/31/10	07/31/11	Construction Complete
6	F-16-FZ	ARAPAHOE	US 285 ML NBND over SH 88 ML	See F-16-AM	Construction Complete	08/31/10	07/31/11	Construction Complete
6	F-19-F	ARAPAHOE	US 36 ML over DRAW	TBD	Not Programmed	TBD	TBD	TBD
2	O-26-L	BACA	US 160 ML over CAT CREEK W of SPRINGFIELD	\$ 4,121,000	In Construction	08/06/12	12/13/12	Modified D/B
2	O-25-I	BACA	US 160 ML over DRAW W of PRITCHETT	See O-26-L	In Construction	08/06/12	12/13/12	Modified D/B
2	O-25-H	BACA	US 160 ML over N FK SAND ARROYO SW of PRITCHETT	See O-26-L	In Construction	08/06/12	12/13/12	Modified D/B
2	M-24-B	BENT	SH 101 ML over DRAW S of LAS ANIMAS and JCT US 50	\$ 5,876,000	In Construction	05/14/12	10/31/12	Modified D/B
2	L-24-F	BENT	SH 101 ML over PURGATOIRE RIVER S of LAS ANIMAS	See M-24-B	In Construction	05/14/12	10/31/12	Modified D/B
4	E-15-AA	BOULDER	SH 170 ML over COMMUNITY DITCH AR CNTY RD / OLD WADS over US 36 ML (DENVER/BOULDER TNPK) SE of JCT SH 121	\$ -	No Action Proposed	--	--	--
6	E-16-FL	BROOMFIELD	SH 121 ML SBND- WADSWORTH PKWY over US 36 ML (DENVER/BOULDER TNPK)	\$ 14,636,000	In Construction	08/30/12	09/30/13	D/B
6	E-16-FK	BROOMFIELD	170 FRONTAGE RD over CLEAR CREEK (SR) W IDAHO SPRINGS	\$ 29,791,000	In Construction	08/30/12	09/30/13	D/B
1	F-14-B	CLEAR CREEK	170 FRONTAGE RD over CLEAR CREEK (SR) W IDAHO SPRINGS	\$ 1,924,000	Construction Complete	07/19/10	11/23/10	Construction Complete
1	F-14-Y	CLEAR CREEK	I 70(BUSINESS RT) over I 70 ML	TBD	Not Programmed	TBD	TBD	TBD
1	F-15-BL	CLEAR CREEK	I 70 ML WBND over US 6, CLEAR CREEK	TBD	Not Programmed	TBD	TBD	TBD
1	F-15-D	CLEAR CREEK	I 70 FRONTAGE RD over CLEAR CREEK (SR)	TBD	Not Programmed	TBD	TBD	TBD
5	O-12-AD	CONEJOS	SH 371 ML over ALAMOSA RIVER	TBD	Not Programmed	TBD	TBD	TBD
2	L-22-F	CROWLEY	SH 96 ML over BLACK DRAW	See K-23-B	Construction Complete	08/18/10	09/21/11	Construction Complete
2	L-21-U	CROWLEY	SH 96 ML over NUMA DRAIN CANAL	\$ -	Construction Complete	--	--	Construction Complete
6	F-17-AE	DENVER	SH 30 ML/HAVANA ST over CHERRY CREEK	\$ 5,779,000	Construction Complete	02/07/11	06/15/12	Construction Complete
6	E-17-GE	DENVER	170 ML WBND over SAND CREEK E of QUEBEC ST	\$ 12,759,000	Construction Complete	07/29/11	07/06/12	D-B-B w/ A+B bid
6	E-17-BY	DENVER	170 ML EBND over SAND CREEK E of QUEBEC ST	See E-17-GE	Construction Complete	07/29/11	07/06/12	D-B-B w/ A+B bid
6	F-16-DP	DENVER	I 25 ML over RDWY,RR, SOUTH PLATTE RVR BRONCO BRIDGE	\$ 24,360,000	In Construction	05/02/11	07/11/13	In Construction
6	F-16-DT	DENVER	I 25 ML NBND over US 85 ML (SANTA FE)	\$ 17,922,000	In Construction	07/11/11	08/31/13	D-B-B

List of FASTER Eligible Bridges

Region	Original Bridge Number	County	Facility Carried over Featured Intersection	Budget	Status	Construction Start Date	Construction Completion Date	Project Delivery Method
6	F-16-DW	DENVER	I 25 ML SBND over US 85 ML (SANTA FE)	See F-16-DT	In Construction	07/11/11	08/31/13	D-B-B
6	F-16-FW	DENVER	US 287+SH 88 (FEDERAL) over US 40 ML (COLFAX)	\$ 9,350,000	In Construction	09/26/11	03/28/13	D-B-B
6	F-16-GG	DENVER	PERRY STREET over US 6 ML W of FEDERAL	\$ -	No Action Proposed	--	--	Transfer out of CBE
6	F-16-EJ	DENVER	US 6 ML over BNSF RR E SIDE OF I-25	\$ 11,491,000	In Design	05/02/13	10/31/16	D/B
6	E-16-FW	DENVER	PECOS STREET over I 70 ML in DENVER	\$ 25,785,000	In Construction	09/28/12	10/15/13	CMGC
6	F-16-EF	DENVER	US 6 ML over SOUTH PLATTE RIVER W SIDE of I-25	\$ 23,329,000	In Design	05/01/13	10/13/16	D/B
6	F-16-EN	DENVER	US 6 ML over BRYANT STREET W SIDE OF I-25	\$ 31,697,000	In Design	05/01/13	10/13/16	D/B
6	E-17-AH	DENVER	ON 40TH AVE W of SH 2 ML over BNSF RR	\$ -	No Action Proposed	--	--	Transfer out of CBE
6	E-17-EW	DENVER	I 70 ML EBND over UP RR W of COLORADO BLVD	TBD	Not Programmed	TBD	TBD	TBD
6	F-16-BM	DENVER	SH 88 ML over RR, LAKEWOOD GULCH	\$ -	Construction Complete	--	--	Construction Complete
6	E-17-FX	DENVER	I 70 ML over US 6, RR, CITY ST	TBD	Not Programmed	TBD	TBD	TBD
6	E-17-DF	DENVER	I 70 ML WBND over UP RR	TBD	Not Programmed	TBD	TBD	TBD
6	E-17-JP	DENVER	I 70 ML over HAVANA ST, UP RR	TBD	Programmed	TBD	TBD	D/B
6	F-16-OG	DENVER	RAMP to I 25 NBND over US 6 ML	TBD	Not Programmed	TBD	TBD	TBD
1	G-16-B	DOUGLAS	US 85 ML over DRAW	\$ 3,801,000	Design Completed	10/01/12	06/24/13	D-B-B
1	G-16-C	DOUGLAS	US 85 ML over DRAW	See G-16-B	Design Completed	10/01/12	06/24/13	D-B-B
1	G-17-A	DOUGLAS	US 85 ML over SAND CREEK	\$ 2,975,000	In Design	TBD	TBD	Design to be Shelved
3	F-09-H	EAGLE	US 6 ML over EAGLE RIVER E of EAGLE	\$ 5,310,000	Construction Complete	07/20/11	05/18/12	D-B-B
3	F-08-F	EAGLE	I 70 SERVICE RD over COLORADO RIVER (SR) N. of DOTSERO INT.	\$ 12,825,000	In Construction	09/04/12	10/23/13	CMGC
3	F-11-AC	EAGLE	I 70 ML EBND over US 6, RR, EAGLE RIVER E of JCT SH 131	\$ 48,602,000	In Design	04/14/14	10/01/15	D-B-B w/ A+B bid
3	F-11-AB	EAGLE	I 70 ML WBND over US 6, RR, EAGLE RIVER E of JCT US 24	See F-11-AC	In Design	04/14/14	10/01/15	D-B-B w/ A+B bid
3	F-10-L	EAGLE	I 70 ML EBND over US 6, RR, EAGLE RIVER	TBD	Not Programmed	TBD	TBD	TBD
3	F-11-AO	EAGLE	I 70 ML EBND over TIMBER CREEK	TBD	Not Programmed	TBD	TBD	TBD
2	H-18-A	EL PASO	US 24 ML over BLACK SQUIRREL CREEK W of PEYTON	\$ 3,495,000	Construction Complete	11/15/11	08/17/12	D-B-B
2	I-17-AE	EL PASO	US 24 ML EBND over FOUNTAIN CREEK	See H-16-K	Construction Complete	08/04/10	10/21/10	Construction Complete
2	H-17-M	EL PASO	I 25 ML over DRAW	\$ -	In Design	03/01/13	12/31/14	D/B
2	I-18-G	EL PASO	US 24 ML over DRAW E of FALCON	\$ -	Construction Complete	--	--	Construction Complete
2	J-18-S	EL PASO	I 25 ML NBND over DRAW S of FOUNTAIN	\$ 1,151,000	Construction Complete	06/03/12	08/17/12	Streamlined D/B
2	J-18-T	EL PASO	I 25 ML NBND over DRAW S of FOUNTAIN	See J-18-S	Construction Complete	06/03/12	08/17/12	Streamlined D/B
2	I-17-O	EL PASO	I 25 SERVICE RD over PINE CREEK S of JCT SH 56	\$ 4,279,000	In Design	05/17/14	12/19/14	D-B-B
1	G-21-B	ELBERT	I 70 FRONTAGE RD over DRAW (SR)	\$ 2,221,000	In Design	03/04/13	06/17/13	D-B-B
1	G-21-Y	ELBERT	I 70 BUSINESS SPUR over I 70 ML	\$ -	No Action Proposed	--	--	--
2	K-16-K	FREMONT	SH 120 ML over RR, ARKANSAS RIVER E of PORTLAND	\$ 6,136,000	Design Completed	10/01/12	08/03/13	D-B-B
2	J-15-B	FREMONT	SH 9 ML over CURRANT CREEK NW of JCT US 50	\$ 2,256,000	Construction Complete	05/04/11	11/01/11	Modified D/B
2	K-16-S	FREMONT	SH 120 ML over DRAW, UP RR E of FLORENCE	\$ 6,013,000	In Design	03/15/13	04/15/14	D-B-B
2	K-16-Q	FREMONT	SH 120 ML over HARDSCRABBLE CREEK	\$ -	Construction Complete	--	--	Construction Complete
2	K-14-J	FREMONT	US 50 ML over DRAW	\$510,900 design only	In Design	02/08/14	09/30/14	D-B-B
2	K-16-W	FREMONT	SH 67 ML over DRAW	\$ -	No Action Proposed	--	--	--
3	F-07-A	GARFIELD	SH 82 ML over I 70 ML, COLORADO RVR, RR GLENWOOD SPRINGS	\$ 59,020,000	In Design	02/17/15	11/20/17	CMGC
3	F-05-L	GARFIELD	I 70 ML WBND over COLORADO RIVER	TBD	Not Programmed	TBD	TBD	TBD
3	D-13-A	GRAND	US 34 ML over N FK COLORADO RIVER	TBD	Not Programmed	TBD	TBD	TBD
3	J-09-C	GUNNISON	US 50 SERVICE RD over GUNNISON RVR OVERFLOW (SR) W. SIDE of GUNNISON	\$ 2,856,000	Construction Complete	08/29/11	08/31/12	D-B-B
3	J-09-D	GUNNISON	US 50 SERVICE RD over GUNNISON RVR (SR) W. SIDE of GUNNISON	See J-09-C	Construction Complete	08/29/11	08/31/12	D-B-B
3	J-09-G	GUNNISON	SH 114 ML over TOMICHI CREEK	\$ -	Construction Complete	--	--	Construction Complete
2	N-17-N	HUERFANO	I 25 ML NBND over MISSOURI CREEK	\$ 2,522,000	Construction Complete	01/27/11	09/01/11	Construction Complete
2	O-16-A	HUERFANO	SH 12 ML over CUCHARAS RIVER S of LA VETA	See P-17-H	In Construction	02/19/12	11/03/12	Modified D/B
2	N-16-L	HUERFANO	SH 69 ML over TURKEY CREEK	\$ 2,475,000	Construction Complete	06/22/11	07/15/11	Construction Complete

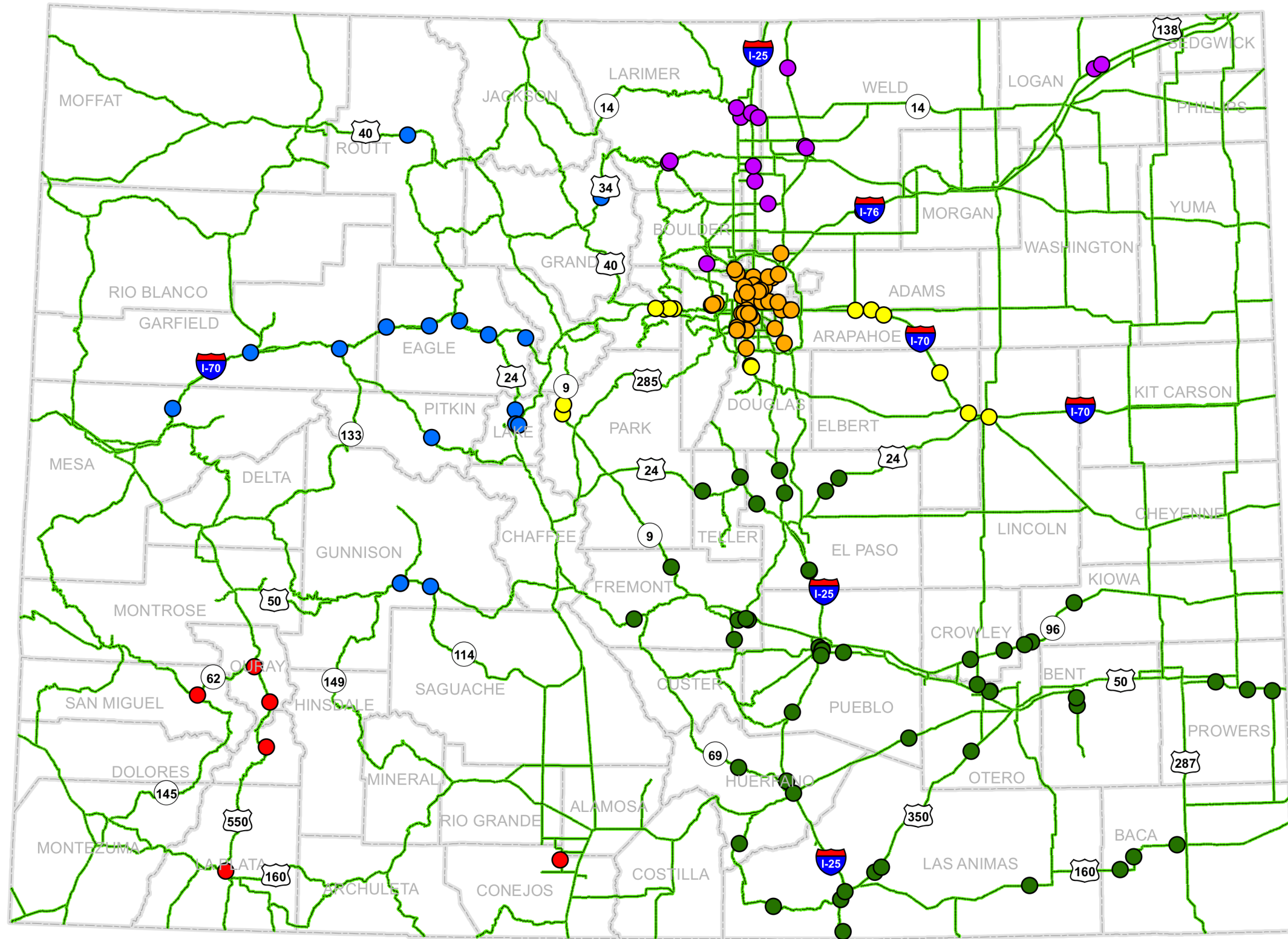
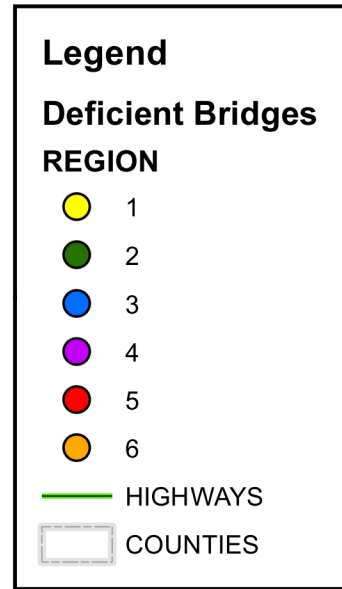
List of FASTER Eligible Bridges

Region	Original Bridge Number	County	Facility Carried over Featured Intersection	Budget	Status	Construction Start Date	Construction Completion Date	Project Delivery Method
2	N-17-AD	HUERFANO	I 25 ML SBND over US 160 ML, RR SPUR	TBD	Not Programmed	TBD	TBD	TBD
2	M-16-P	HUERFANO	SH 69 ML over MILLIKEN ARROYO	\$ 3,957,000	Programmed	TBD	TBD	D-B-B
2	N-17-C	HUERFANO	I 25 BUS RT over SULL CREEK	\$ 5,157,000	Programmed	TBD	TBD	D-B-B
6	F-16-CS	JEFFERSON	SH121 ML-WADSWORTH over BEAR CREEK N OF 285	\$ 9,840,000	In Construction	03/26/12	05/10/13	D-B-B
6	F-16-FL	JEFFERSON	US 6 ML over SH 95 ML/SHERIDAN AVE.	\$ 14,480,000	In Construction	01/03/12	08/06/13	D-B-B
6	F-16-AM	JEFFERSON	US 285 ML SBND over SH 121 ML	\$ 47,396,000	Construction Complete	08/31/10	07/31/11	Construction Complete
6	F-16-AY	JEFFERSON	US 285 ML NBND over SH 121 ML	See F-16-AM	Construction Complete	08/31/10	07/31/11	Construction Complete
6	F-16-I	JEFFERSON	US 285 ML SBND over PIERCE STREET	See F-16-AM	Construction Complete	08/31/10	07/31/11	Construction Complete
6	E-16-FX	JEFFERSON	WASHINGTON STREET over SH 58 ML	\$ 6,097,000	Construction Complete	02/20/08	11/02/09	Construction Complete
6	E-16-HI	JEFFERSON	SH 58 ML over CO.RD,RR SPUR	\$ 9,151,000	Construction Complete	--	--	Construction Complete
6	E-16-HA	JEFFERSON	SH 58 ML over FORD STREET, WASH	\$ 9,122,000	In Design	05/30/13	05/28/14	D-B-B
2	K-23-B	KIOWA	SH 96 ML over DRAW	\$ 3,591,000	Construction Complete	08/18/10	09/21/11	Construction Complete
2	K-23-C	KIOWA	SH 96 ML over DRAW	See K-23-B	Construction Complete	08/18/10	09/21/11	Construction Complete
2	K-24-A	KIOWA	SH 96 ML over DRAW	See K-23-B	Construction Complete	08/18/10	09/21/11	Construction Complete
5	O-05-AQ	LA PLATA	US 160 ML over ANIMAS RIVER	\$ 807,000	Construction Complete	07/26/10	11/23/10	Construction Complete
3	G-11-F	LAKE	US 24 ML over UP RR	\$ 6,892,000	Construction Complete	12/30/10	11/09/11	Construction Complete
3	H-11-D	LAKE	US 24 ML over CALIFORNIA GULCH	TBD	Not Programmed	TBD	TBD	TBD
3	H-11-F	LAKE	US 24 ML over CALIFORNIA GULCH	TBD	Not Programmed	TBD	TBD	TBD
4	B-16-AE	LARIMER	US 287 ML over DRAW N of JCT SH 1	\$ 4,322,000	Construction Complete	07/25/11	05/01/12	D-B-B
4	B-16-D	LARIMER	SH 14 ML over CACHE LA POUFRE RIVER E of JCT US 287	\$ 13,282,000	In Design	12/02/13	11/21/14	D-B-B
4	C-15-I	LARIMER	US 34 ML over BIG THOMPSON RIVER	\$ 5,363,000	Construction Complete	08/17/09	06/30/10	Construction Complete
4	C-15-J	LARIMER	US 34 ML over BIG THOMPSON RIVER	See C-15-I	Construction Complete	08/17/09	06/30/10	Construction Complete
4	C-17-EL	LARIMER	I 25 ML over DRAW	\$ -	No Action Proposed	--	--	--
4	B-16-EU	LARIMER	COUNTY ROAD 48 over I 25 ML	TBD	Not Programmed	TBD	TBD	TBD
2	P-17-H	LAS ANIMAS	SH 12 ML over PURGATOIRE RIVER NW of WESTON	\$ 3,179,000	In Construction	02/19/12	11/03/12	Modified D/B
2	O-19-H	LAS ANIMAS	US 350 ML over PURGATOIRE RIVER NE of JCT US 160	\$ 5,350,000	In Design	04/15/13	11/15/13	D-B-B
2	P-18-B	LAS ANIMAS	I 25 ML NBND over PURGATOIRE RIVER	\$ -	Construction Complete	--	--	Construction Complete
2	P-18-S	LAS ANIMAS	I 25 ML SBND over PURGATOIRE RIVER	\$ -	Construction Complete	--	--	Construction Complete
2	O-19-J	LAS ANIMAS	US 350 ML over DRAW S of MODEL	\$ 3,914,000	Design Completed	12/15/12	07/01/13	D-B-B
2	P-19-AD	LAS ANIMAS	SH 239(CO RD 75) ML over IRRIGATION CANAL in TRINIDAD	See O-19-J	Design Completed	12/15/12	07/01/13	D-B-B
2	P-23-A_MINOR	LAS ANIMAS	US 160 ML over SMITH CANYON	\$ 2,656,000	Programmed	TBD	TBD	D-B-B
1	G-22-J	LINCOLN	US 24 ML over DRAW E of LIMON	\$ 1,045,000	Construction Complete	05/02/11	08/24/11	D-B-B
4	A-24-C A-26-F	LOGAN SEDGWICK	US 138 ML over DITCH/DRAW	\$ 870,000	Construction Complete	10/01/10	12/15/10	Construction Complete
3	G-03-Q	MESA	I 70 ML WBND over COLORADO RIVER OVERFLOW	TBD	Not Programmed	TBD	TBD	TBD
2	L-22-O	OTERO	SH 266 ML over HOLBROOK CANAL NE of ROCKY FORD	\$ 8,903,000	In Construction	08/20/12	12/10/12	CMGC
2	L-22-E	OTERO	SH 266 ML over FT LYON STORAGE CANAL NE of ROCKY FORD	See L-22-O	In Construction	08/20/12	12/10/12	CMGC
2	L-22-K	OTERO	SH 71 ML over FT LYON CANAL NW of ROCKY FORD	See L-22-O	In Construction	08/20/12	12/10/12	CMGC
2	M-21-D	OTERO	US 350 ML over DRAW SW of LA JUNTA & TIMPAS	\$ 2,350,000	Construction Complete	10/19/11	05/18/12	D-B-B
5	L-05-B	OURAY	SH 62 ML over UNCOMPAGHRE RIVER SHERMAN ST in RIDGWAY	\$ 8,650,000	In Construction	04/24/12	06/01/13	D-B-B
5	L-06-A	OURAY	US 550 ML over BEAR CREEK	\$ 5,851,000	Construction Complete	07/26/10	10/24/11	Construction Complete
1	G-12-L	PARK	SH 9 ML over BUCKSKIN GULCH in ALMA	\$ 436,000	Construction Complete	9/5/11	12/29/11	D-B-B
1	G-12-C	PARK	SH 9 ML over PLATTE GULCH	TBD	Not Programmed	TBD	TBD	TBD
3	H-09-B	PITKIN	SH 82 ML over CO RD, CASTLE CREEK	\$ 982,000	Construction Complete	01/27/11	07/21/11	Construction Complete
2	L-28-F	PROWERS	SH 89 ML over ARKANSAS RIVER S of HOLLY	\$ 6,728,000	Construction Complete	02/16/11	12/01/11	D-B-B
2	L-27-S	PROWERS	US 50 ML over DRAW E of LAMAR	See L-28-C	In Design	03/01/13	02/28/14	D-B-B
2	L-28-C	PROWERS	US 50 ML over BNSF RR E of GRANADA	\$ 6,325,000	In Design	03/01/13	02/28/14	D-B-B
2	K-18-AX	PUEBLO	I 25 ML NBND over US 50 ML	TBD	Not Programmed	TBD	TBD	TBD

List of FASTER Eligible Bridges

Region	Original Bridge Number	County	Facility Carried over Featured Intersection	Budget	Status	Construction Start Date	Construction Completion Date	Project Delivery Method
2	K-18-CL	PUEBLO	I 25 ML SBND over NP RR, ILEX ST, BENNET ST S of JCT SH 96	\$ 40,483,000	In Design	07/02/13	05/15/15	D/B
2	K-18-CK	PUEBLO	I 25 ML NBND over NP RR, ILEX ST, BENNET ST N of JCT SH 50 E	See K-18-CL	In Design	07/02/13	05/15/15	D/B
2	K-18-R	PUEBLO	US 50 BUS EBND over ARKANSAS RIVER	TBD	Not Programmed	TBD	TBD	TBD
2	K-18-Z	PUEBLO	SH 96 ML over RDWY, RR, ARKANSAS RVR	\$ 42,660,000	Construction Complete	11/07/07	04/01/11	Construction Complete
2	L-18-AQ	PUEBLO	NORTHERN AVE over I 25 ML	\$ 30,680,000	In Design	TBD	TBD	D-B-B
2	L-18-M	PUEBLO	I 25 ML NBND over INDIANA AVE	\$ 5,476,000	In Design	TBD	TBD	D-B-B
2	L-18-W	PUEBLO	I 25 ML SBND over INDIANA AVE	See L-18-M	In Design	TBD	TBD	D-B-B
2	L-19-C	PUEBLO	US 50 BUS RT WBND over ST CHARLES RIVER	\$ 2,957,000	Construction Complete	10/16/09	07/22/10	Construction Complete
2	M-17-R	PUEBLO	I 25 ML over DRAW	\$ -	Construction Complete	--	--	Construction Complete
2	M-20-A	PUEBLO	SH 10 ML over SAUNDERS ARROYO	\$ 2,235,000	Construction Complete	--	--	Construction Complete
3	C-09-C	ROUTT	US 40 ML over E FORK ELK RIVER W of STEAMBOAT SPGS	\$ 10,501,000	In Design	05/01/14	07/29/15	D-B-B
5	M-06-K	SAN JUAN	US 550 ML over MINERAL CREEK	\$ 3,652,000	Construction Complete	08/17/09	06/01/11	Construction Complete
5	L-04-B	SAN MIGUEL	SH 145 ML over LEOPARD CREEK JCT SH 62 - PLACERVILLE	\$ 4,768,000	In Construction	05/15/12	12/07/12	D-B-B
2	H-16-K	TELLER	SH 67 ML over DRAW	\$ 2,617,000	Construction Complete	08/04/10	12/31/10	Construction Complete
2	I-15-Y	TELLER	US 24 ML over TWIN CREEK	See H-16-K	Construction Complete	08/04/10	10/21/10	Construction Complete
4	C-17-BN	WELD	I 25 SERVICE RD over LITTLE THOMPSON RIVER S of JCT SH 56	\$ 3,079,000	In Construction	09/04/12	05/08/13	D/B
4	D-17-AK	WELD	SH 66 ML over ST VRRAIN RIVER W of PLATTEVILLE	\$ 5,862,000	Design Completed	11/01/12	08/15/13	D-B-B
4	C-18-BK	WELD	US 85 BYPASS SBND over US 85 BUS RT	TBD	Not Programmed	TBD	TBD	TBD
4	D-19-A	WELD	I 76 SERVICE RD over LOST CREEK SR	TBD	Not Programmed	TBD	TBD	TBD
4	B-17-L	WELD	SH 14 ML over COALBANK CREEK W of AULT	\$ 8,806,000	In Design	12/10/12	08/31/13	D-B-B
4	B-17-C	WELD	US 85 ML (NUNN BRIDGE) over UPRR	\$ 7,917,000	In Design	02/02/13	09/12/13	D-B-B
4	D-28-B	YUMA	US 34 ML over N FK REPUBLICAN RIVER W of LAIRD	\$ 3,976,000	In Construction	06/25/12	01/13/13	D-B-B

Colorado State Map of FASTER Eligible Bridges



164 FASTER eligible bridges