

Colorado
Bridge
Enterprise

Quarterly Report No. 03 (Q2 FY2012)

February 15, 2012

Introduction

This report is the third Quarterly Report (or Report) published in support of the Colorado Bridge Enterprise (“Program”). This Report outlines progress and accomplishments associated with the Program for work complete during October, November and December of 2011; which coincides with the second quarter of CDOT’s 2012 fiscal year (Q2 FY2012). Detailed information regarding the FASTER (Funding Advancements for Surface Transportation and Economic Recovery) legislation, program development activities, bond program, previous significant milestones and achievements can be found in the program Annual Reports and previous Quarterly Reports. Past Annual and Quarterly reports and frequently asked questions (FAQs) can be viewed on the CDOT website at www.coloradodot.info/programs/BridgeEnterprise.

During this quarter, the Program primarily focused on the delivery of bridge projects partially or fully funded by the \$300M bond program. The following is an itemization of significant achievements and some are discussed in further detail later in the report.

- Completed the Bridge Enterprise 2012 Annual Report.
- Completed the second Bridge Enterprise Quarterly Report for Q1 FY2012 (July, August and September).
- Updated Quarterly Bond Allocation plan reflected of program performance for work complete through September 30th, 2011.
- Completed monthly updates to the overall bond program schedule; for work complete in October, November and December.
- Published the Key Performance Indicators (KPIs).
- Conducted Schedule Change Control Board meetings in October, November and December.
- Released a Request for Proposal for an Independent Cost Estimating (ICE) services to support CM/GC contract delivery.
- Program continued to identify and develop Process & Procedure guidance documents necessary to standardize and facilitate project / program delivery.
- Added Bridge E-16-HA and evaluated other newly rated “poor” bridges to be added to the program in collaboration with CDOT Staff Bridge.
- Submitted list of Bridge Enterprise (or BE) projects included within the FY 2012 STIP/TIP.
- The CDOT risk management group issued an RFP for an OCIP/ROCIP insurance broker.
- CDOT continues to pursue a programmatic agreement with the UPRR and BNSF railroads.

Program Highlights

The bulk of the bond program scope is currently within the preconstruction phase where the primary focus is completion of the PS&E’s (Plans, Specifications and Estimates). In conjunction with this, CDOT specialty groups are diligently working on completing the requisite approvals and permits associated with environmental, railroad, and utility clearances; securing the

necessary Right-of-Way (ROW); and finalizing intergovernmental agreements (as required), etc. Per the current program schedule, construction work increases significantly in the later part of calendar year 2012.

As of December 31st, 2011, there were a total of one-hundred and fifty-five (155) bridges considered eligible to receive FASTER funding. The progress status associated with these 155 structures is itemized in Table 1 below.

Table 1. Project Status as of Q2 FY2012

Project Phase	Bridge Number
Future Projects	29
In Design Phase	58
In Construction Phase	16
Projects Complete ⁽¹⁾	46
No Longer Considered	6
Total ^{(2) (3)}	155

- (1) Reference Appendix A for List of Completed Bridges.
- (2) Reference Appendix B for complete List of FASTER Eligible bridges.
- (3) Reference Appendix C for Colorado State map of FASTER eligible bridges.

Other relevant bridge and financial statistics are as follows:

- Approximately 40% of FASTER eligible bridges are now either in construction or completed.
- A total of seventy-three (73) bridges are partially (preconstruction phase only) or fully funded (preconstruction and construction) by the \$300M bond program.
- Additionally, \$96.5M (\$22.4M expended + \$74.1M encumbered) of bond program funds have been expended or encumbered to date (reference Table 8).

The schedule progress and performance information presented in Table 2 shows the value of the work complete through Q2 FY2012 as compared to what had been planned to be completed per the baseline schedule. The earned value of work complete to date is \$74.1M as compared to the planned value of the work scheduled to be completed at \$84.6M; which indicates that the program is approximately 12.4% behind the plan.

Note - Earned Value at the lowest level is attained by multiplying the % complete of a project activity by its respective budget. Earned value is rolled-up from the project level to the region level, and then again rolled-up from the region level to the program level.

Table 2. Q2 FY2012 Earned Value by CDOT Region and Program

CDOT Region	Planned Value of Work through December 31 st	Earned Value of Work through December 31 st	Schedule Variance
1	\$ 2,455,711	\$ 2,583,163	\$ 127,452
2	\$ 21,506,897	\$ 18,918,683	\$ (2,588,214)
3	\$ 8,144,523	\$ 8,768,434	\$ 623,911
4	\$ 7,141,253	\$ 6,847,970	\$ (293,283)
5	\$ 1,450,971	\$ 1,704,872	\$ 253,901
6	\$ 43,911,370	\$ 35,252,369	\$ (8,659,001)
Total	\$84,610,725	\$ 74,075,491	\$ (10,535,234)

The Program has implemented cost and schedule Key Performance Indicators (or KPIs) to track, monitor and report on program performance. As part of the monthly schedule update, a Schedule Performance Index (or SPI) is calculated for each project included within the bond program. The SPI is also calculated and reported at the regional and program levels. The SPI is based upon earned value which compares actual progress to planned performance based upon work complete to date.

The program SPI for work complete through December 31st, 2011 was 0.88; which represents a 0.01 increase from the previous quarterly report. The program has established a SPI goal during execution of 0.90.

Program Activities and Accomplishments in Q2 FY2012

The Program’s main activities and significant accomplishments during Q2 FY2012 are briefly described below.

Pre-Construction Phase

There were three projects that began the pre-construction phase (which may include ROW and environmental clearances, design, etc.) as itemized in Table 3 below.

Table 3. Projects that Started Pre-construction

Region	Original Bridge Number	Facility Carried over Featured Intersection
6	E-16-HA	SH 58 ML over Ford Street , Wash
6	F-16-F	US 85(Santa Fe) ML NBND over Dad Clark Gulch
3	F-07-A	SH 82 ML over I70 ML, Colorado River, RR

Bridges that went to AD

There were eleven bridges that went to AD (advertisement for construction) during the period as itemized in Table 4 below.

Table 4. Bridges that went to AD

Region	Original Bridge Number	Facility Carried over Featured Intersection
2	J-18-S	I 25 ML NBND over Draw
2	J-18-T	I 25 ML NBND over Draw
2	L-24-F	SH 101 ML over Purgatoire River
2	M-24-B	SH 101 ML over Draw
2	O-16-A	SH 12 ML over Cucharas River
2	O-25-H	US 160 ML over N Fork Sand Arroyo
2	O-25-I	US 160 ML over Draw
2	O-26-L	US 160 ML over Cat Creek
2	P-17-H	SH 12 ML over Purgatoire River
6	F-16-CS	SH121 ML-Wadsworth over Bear Creek
6	F-16-FL	US 6 ML over SH 95 ML/Sheridan Ave.

CM/GC Project RFP's

There were 3 projects (or 5 bridges) that issued a Request for Proposal for a Construction Manager / General Contractor (CM/GC) as itemized in Table 5.

Table 5. CM/GC Projects

Original Bridge Number	Region	Facility Carried over Featured Intersection
L-22-E	2	SH 266 ML over Ft Lyon Storage Canal
L-22-K	2	SH 71 ML over Ft Lyon Canal
L-22-O	2	SH 266 ML over Holbrook Canal
F-08-F	3	I 70 Service Road over Colorado River
E-16-FW	6	Pecos Street over I 70 ML

Completed Projects

There were six bridges completed during the quarter as itemized in Table 6 below.

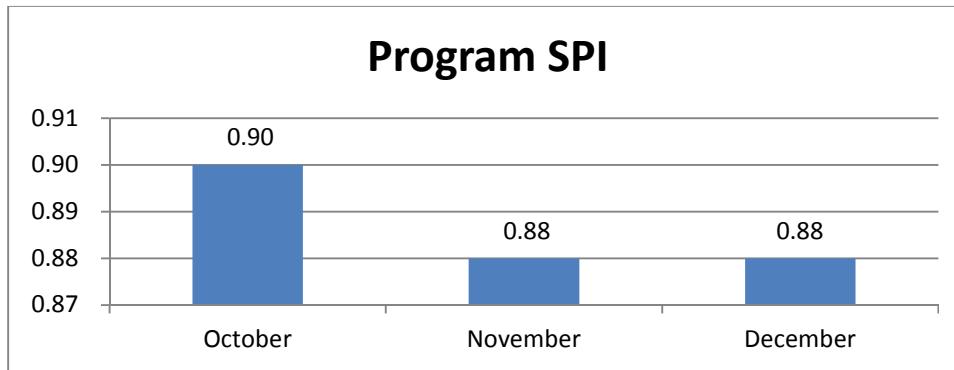
Table 6. Completed Bridge Projects

Region	Original Bridge Number	Facility Carried over Featured Intersection
1	G-12-L	SH 9 ML over Buckskin Gulch
2	J-15-B	SH 9 ML over Currant Creek
2	L-28-F	SH 89 ML over Arkansas River
3	G-11-F	US 24 ML over UPRR
5	L-06-A	US 550 ML over Bear Creek
6	E-16-FP	80th Ave over US 36 ML

Program Schedule Update

The bond program schedule was updated three times during the quarter; for work complete in October, November and December. This includes publishing the monthly updated program bar-chart schedule, cost and schedule matrix, and list of projects with an SPI < 0.90 sorted by Region. This information was consolidated and distributed to the Region RTD's and their respective program engineers. The program SPI's reported for each month during the quarter is graphically depicted on Figure 1.

Figure 1. Bond Program SPI Reported by Month



Schedule Change Control Board

The Schedule Change Control Board (SCCB) conducted three meetings during the quarter: October 5th, November 10th and December 8th. The SCCB meetings were attended by senior CDOT HQ staff including: Tim Harris, Ben Stein, Herman Stockinger, Scott McDaniel, and the Regional Transportation Directors (RTD). The purpose of the SCCB meetings is two-fold: (1) document and review projects with an SPI < 0.90, and (2) allow RTD's the opportunity to petition the SCCB to make adjustments to a project's baseline schedule when the schedule logic does not accurately reflect current project delivery and is artificially impacting the SPI calculation. Formal meeting minutes were published with a list of attendees and an itemized list of SCCB approved changes; subject changes were incorporated into the program schedule in the subsequent schedule update.

Note - the SCCB policy is not intended to provide relief to poorly performing projects. Any baseline adjustments must properly document project issues, and justifiable rationale on proposed adjustments including recommendations to improved project delivery, issues mitigation, required supplemental staffing, and proposed recovery schedules (as necessary).

BE Guidance Documents

Bridge Enterprise in collaboration with CDOT staff continues to develop requisite process and procedures (P&P) documents to assist and facilitate the delivery of the program. The following is an itemization of P&P documents completed and/or currently in development.

- Completed a revision to BE Funding eligibility (CBE Guidance document #6) to include capacity improvements. Presented to the BE Board at the December Workshop.
- Completed CM/GC delivery internal guidance document (CBE Guidance document #9).
- Issued Streamlined and Modified design/build UDBE Pilot Specification revision (CBE Guidance document #10).
- Finalized the new bridge accounting process (CBE Guidance document #11) for replacement of bridge projects (eliminating old resolution transfer policy).
- Currently assisting ICAC on development of a Design / Build guidance document that outlines interface and usage of Trns*Port, Site Manager and defines the process to approve monthly Contractor invoices from an auditing perspective.
- Completed draft of proposed Site Assessment Policy. Subject policy was given to the Region 2 and 6 Program Engineers and various CDOT specialty groups for review and input.
- Participated with CDOT staff and industry stakeholders (ACEC and CCA) to develop an ABC deployment guidance document.

In addition, Bridge Enterprise continues to provide assistance to CDOT staff on the usage and application of all BE guidance documents which are posted internally on the CDOT intranet and BE SharePoint site.

Major Project/Program Strategic Planning and Coordination

Bridge Enterprise continues to work closely with various CDOT project teams on coordination, funding eligibility, and strategic planning issues associated with the following large / major projects:

- Region 3 - SH 82 Grand Ave Bridge in Glenwood Springs. Continued support at the monthly Project Leadership Team (PLT), Project Working Group and Visioning meetings.
- Region 3 - Dotsero Bridge. Attendance at project planning meetings (as required).
- Region 6 - Pecos Street over I-70 ML. Attendance at weekly project meetings.
- Region 6 - 6th Avenue bridges. Strategic planning associated with future Design/Build project which includes three BE bridges (BNSF RR, So. Platter River and Bryant Street bridges) and attendance at weekly project meetings.

Program Financial Performance

At the November BE workshop, the updated bond allocation plan (reflective of work complete through September 31st, 2011) was presented which confirmed that 85-percent of the bond dollars are projected to be spent (Q2 CY2013) as required within three years of receipt. In response to this presentation, the BE Board requested a more detailed presentation regarding the overall program financial performance at the December BE workshop. The BE/CDOT CFO presented a "Program Financial Progress Report" which also addressed the proposed plan as it relates to the timing and estimated dollar value of subsequent bond issuances at the December BE workshop.

OCIP/ROCIP Insurance Broker RFP

CDOT Risk Management continues to explore the possibility of utilizing an Owner Controlled or Rolling Owner Controlled Insurance Program (OCIP/ROCIP) for appropriate construction projects including those in the Bridge Enterprise program. CDOT issued a Request for Proposal (RFP) in November 2011 for an insurance broker to complete a feasibility study to determine the viability on whether or not to deploy an OCIP/ROCIP for Bridge Enterprise projects. Bids were received in December 2011 and the selection committee is currently reviewing bids. Note - There is no commitment by CDOT to deploy an OCIP/ROCIP insurance program.

CDOT Programmatic Agreement with UP and BNSF railroads

CDOT in collaboration with the State Controller and Attorney General’s office is in the process of developing a standard contract template (or Master Agreement) with the UP and BNSF railroads. The intent is to establish a base contract template with agreed upon terms and conditions thereby streamlining the time to engage the railroads involvement as it relates to engineering, design and securing a construction and maintenance agreement on structures over RR’s. The programmatic agreement would also extend to other CDOT projects.

Resolutions Approved by the Bridge Enterprise Board

The following is a brief overview of resolutions passed by the Bridge Enterprise BOD or significant topics discussed during the quarter as itemized in Table 7 below.

Table 7. Board Resolution / Significant Topics

October Workshop / BOD Meetings
<ul style="list-style-type: none"> ▪ No workshop conducted this month; BOD meeting held in Breckenridge, CO ▪ Election of BE Chair, Vice Chair and Secretary for 2011-2012 ▪ Adoption of 5th budget supplement for FY2012
November Workshop / BOD Meetings
<ul style="list-style-type: none"> ▪ Adoption of 6th budget supplement for FY2012 ▪ An overview presentation of Quarterly Bond Program Update ▪ Overview presentation on proposed 6th Ave Design / Build project
December Workshop / BOD Meetings
<ul style="list-style-type: none"> ▪ Adoption of 7th budget supplement for FY2012 ▪ Adoption of FHWA Discretionary Grant application for FY2012 ▪ Program Financial Progress Report Presentation

Other Significant Achievements

- BE staff conducted project funding eligibility reviews with CDOT project teams and FHWA personnel.
- Supported CDOT’s Public Relations and Government Relations on improvements to the CDOT/Bridge Enterprise website including the official launch of the CBE website changes in October.
- Supported CDOT OFMB on collecting budget supplements from regions for presentation at the monthly BE BOD meeting.
- Standardized BE public information board to be presented at public meetings.
- Development of standardized confidentiality agreement for D/B projects with ICAC and State AG’s office form 714.
- Assisted CDOT HQ historian on development of a historic bridge assessment task order.
- Established process to capture and report jobs created via FASTER funded projects including construction craft labor and professional services from consultants.
- Drafted a 2011 Year in Review presentation for the January BOD meeting.

Financial Information

The following is a program overview of financial statistics as of December 31, 2011.

- The program has multiple funding sources including: proceeds from the Build America Bond program, FASTER Bridge dollars which is commonly referred to as the statewide pay-go program (collected yearly revenues from vehicle registrations), Bank of America Loan, and Other Funds which is primarily Federal-aid BR funding.
- From program inception (or life-to-date), a total of \$305.9M has been budgeted (all funding sources), and Expenditures and Encumbrances are \$78.1M and \$97.3M (all funding sources), respectively. Reference Table 8 below for details by funding source.
- For comparison purposes, the totals from the previous quarterly report (Q1 FY2012) have also been reported in the far right column.
- Based upon the \$300M bond program baseline schedule developed in February 2011, approximately \$69.2M of bond dollars were projected to be expended by December 31st, 2011; whereas, actual expenditures were \$22.4M but with \$74.1M in encumbrances.

Table 8. Program Financial Statistics as of December 31st, 2011 (\$ in Millions).

	Build America Bonds 2010 A Proceeds	FASTER Bridge	Bank of America Loan	Other Funds	Total Q2 FY2012	Total Q1 FY2012
Budget	\$184.1	\$57.6	\$39.9	\$24.3	\$305.9	\$290.1
Expenditures	\$22.4	\$19.4	\$23.3	\$13.0	\$78.1	\$49.9
Encumbrances	\$74.1	\$9.2	\$6.8	\$7.2	\$97.3	\$102.8

The \$300M bond program currently consists of seventy-three (73) projects; fifty (50) of these projects are fully funded, and twenty-three (23) of these projects are partially funded with current available sources and will require a future bond issuance or other funding to complete. The estimated total cost for these seventy-three projects is approximately \$636.3M. Table 9 below provides an itemization of current funding sources and indicates that \$257.0M of additional funding (future bond issuance or other funding) will be necessary to complete all projects. The timing and projected value of any future bond offering is yet to be determined.

Table 9. Current Bond Allocation Plan (\$ in Millions)

Build America Bonds	FASTER Bridge	Other Funds	Future Bond Issue or Other Funding	Total
\$298.0	\$50.2	\$31.1	\$257.0	\$636.3

Economic Outlook

The following are highlights from project bid data results maintained by CDOT’s Engineering Estimates and Market Analysis (EEMA) group for transportation related projects advertised during the period.

- There were on average 5 bidders submitting bids on a CDOT project as compared to 4 bidders submitting bids per project from the previous period. The increase in amount of bidders creates a more competitive bidding environment (lower bids) from the owner’s perspective.
- There were a total of five Bridge Enterprise projects advertised during the period and cumulatively this represented approximately \$20.5M of work. Three bids came in under the owners estimate (on average approximately 15% less); two bids came in over the owners estimate (on average approximately 6% higher); and overall the bids came in approximately 3% less than the owners estimate.
- During the period, CDOT advertised 32 transportation related projects (this includes the 5 BE projects noted above) and cumulatively this represented approximately \$112.7M in work, and combined these projects came in on average approximately 9% less than the owners estimate.

The following economic statistics were reported by the Chief Economist from the Associated General Contractors (AGC) of America as reported by AGC’s Data DIGest: Vol. 12, Nos. 2, 3, 4 and 5.

- Nationally “construction employment totaled 5,544,000, up 17,000 for the month [December] and up 46,000 (0.8%) over 12 months”.
- “Reports from the 12 Federal Reserve districts suggest that national economic activity expanded at a modest to moderate pace during the reporting period of late November through the end of December”.
- The Producer Price Index (PPI) for inputs to construction industries (which is a weighted average of the price of all goods used in every type of construction, plus items consumed by

contractors such as diesel fuel), “fell 0.2% for the month [December] but rose 5.3% for the year, matching the 2010 increase”.

- “Construction spending in December reached a 20-month high of \$816 billion at a seasonally adjusted annual rate, an increase of 1.5% from November and 4.3% from December 2010...”
- “Public construction spending edged up 0.5% for the month [December] but sank 6.5% for the year”.
- “Highway and street construction climbed 1.8% in December but dropped 4.5% from 2010 to 2011”.
- “Construction employment rose in 128 out-of 337 metro areas for which the BLS [Bureau of Labor Statistics] provides industry data, fell in 148 and was stable in 61, an AGC analysis showed”.
- Construction employment increased from December 2010 to December 2011 in 29 states - plus the District of Columbia, decreased in 21 states, and one state remained the same.
- Colorado lost approximately 4,500 construction jobs, which represents a 4.0% decline from December 2010, and Colorado currently stands 44th in the nation based upon a 12-month % change in construction employment.
- Colorado has seven designated areas within the 337 national metro areas included in the data survey: one area remained the same (Grand Junction); three areas reported a decline (Boulder, Colorado Springs, and Fort Collins-Loveland); and three areas (Denver-Aurora-Broomfield, Greeley and Pueblo) reported a positive increase over a 12-month period (December 2010 to December 2011).

Based upon the above noted national economic indicators, there is evidence that the economy is improving (ever slightly) especially in the last quarter of calendar year 2011. These national economic indicators are contrasted with the lagging Colorado statewide and major metropolitan area economic indicators (e.g., Boulder, Colorado Springs, and Fort Collins-Loveland). Furthermore, increases in construction costs (e.g., PPI) also appear to be off-setting cost savings realized in a competitive bidding environment.

Looking forward, the program will continue to explore opportunities to accelerate project / program completion and take advantage of the current competitive bidding environment (hopefully completing more work with less dollars and off-setting rising construction costs).

Current List of Completed Bridges

Region	Original Bridge Number	County	Facility Carried over Featured Intersection	Work Completed
1	F-14-B	CLEAR CREEK	I 70 FRONTAGE RD over CLEAR CREEK (SR)	Replaced
1	G-22-J	LINCOLN	US 24 ML over DRAW	Replaced
1	G-12-L	PARK	SH 9 ML over BUCKSKIN GULCH	Repaired
2	L-21-U	CROWLEY	SH 96 ML over NUMA DRAIN CANAL	Replaced- minor structure
2	L-22-F	CROWLEY	SH 96 ML over BLACK DRAW	Replaced- minor structure
2	I-17-AE	EL PASO	US 24 ML EBND over FOUNTAIN CREEK	Repaired
2	I-18-G	EL PASO	US 24 ML over DRAW	Replaced
2	J-15-B	FREMONT	SH 9 ML over CURRANT CREEK	Replaced
2	K-16-Q	FREMONT	SH 120 ML over HARDSCRABBLE CREEK	Replaced
2	N-17-N	HUERFANO	I 25 ML NBND over MISSOURI CREEK	Replaced
2	N-16-L	HUERFANO	SH 69 ML over TURKEY CREEK	Replaced
2	K-23-B	KIOWA	SH 96 ML over DRAW	Replaced
2	K-23-C	KIOWA	SH 96 ML over DRAW	Replaced
2	K-24-A	KIOWA	SH 96 ML over DRAW	Replaced
2	P-18-B	LAS ANIMAS	I 25 ML NBND over PURGATOIRE RIVER	Replaced
2	P-18-S	LAS ANIMAS	I 25 ML SBND over PURGATOIRE RIVER	Replaced
2	L-28-F	PROWERS	SH 89 ML over ARKANSAS RIVER	Replaced
2	K-18-Z	PUEBLO	SH 96 ML over RDWY, RR, ARKANSAS RVR	Replaced
2	L-19-C	PUEBLO	US 50 BUS. RT WBND over ST CHARLES RIVER	Replaced
2	M-17-R	PUEBLO	I 25 ML over DRAW	Repaired
2	M-20-A	PUEBLO	SH 10 ML over SAUNDERS ARROYO	Replaced
2	H-16-K	TELLER	SH 67 ML over DRAW	Replaced
2	I-15-Y	TELLER	US 24 ML over TWIN CREEK	Repaired
3	J-09-G	GUNNISON	SH 114 ML over TOMICHI CREEK	Replaced
3	G-11-F	LAKE	US 24 ML over UP RR	Replaced
3	H-09-B	PITKIN	SH 82 ML over CO RD, CASTLE CREEK	Repaired
4	C-15-I	LARIMER	US 34 ML over BIG THOMPSON RIVER	Replaced
4	C-15-J	LARIMER	US 34 ML over BIG THOMPSON RIVER	Replaced
4	A-24-CA-26-F	LOGAN SEDGWICK	US 138 ML over DITCH/DRAW	Replaced- minor structure
5	O-05-AQ	LA PLATA	US 160 ML over ANIMAS RIVER	Repaired
5	L-06-A	OURAY	US 550 ML over BEAR CREEK	Replaced

Current List of Completed Bridges

Region	Original Bridge Number	County	Facility Carried over Featured Intersection	Work Completed
5	M-06-K	SAN JUAN	US 550 ML over MINERAL CREEK	Replaced
6	E-16-FP	ADAMS	80TH AVE over US 36 ML	Replaced
6	E-17-AR	ADAMS	SH 7 ML over SOUTH PLATTE RIVER	Replaced
6	E-17-DM	ADAMS	I 76 ML WBND over UP RR	Replaced
6	E-17-DN	ADAMS	I 76 ML EBND over UP RR	Replaced
6	E-17-HG	ADAMS	104TH AVE over I 25 ML	Replaced
6	E-17-HL	ADAMS	I 76 ML EBND over SH 224 ML	Replaced
6	F-16-FY	ARAPAHOE	US 285 ML SBND over SH 88 ML	Replaced
6	F-16-FZ	ARAPAHOE	US 285 ML NBND over SH 88 ML	Replaced
6	F-16-BM	DENVER	SH 88 ML over RR, LAKEWOOD GULCH	Replaced
6	E-16-FX	JEFFERSON	WASHINGTON STREET over SH 58 ML	Replaced
6	E-16-HI	JEFFERSON	SH 58 ML over CO. RD,RR SPUR	Replaced
6	F-16-AM	JEFFERSON	US 285 ML SBND over SH 121 ML	Replaced
6	F-16-AY	JEFFERSON	US 285 ML NBND over SH 121 ML	Replaced
6	F-16-I	JEFFERSON	US 285 ML SBND over PIERCE STREET	Replaced

List of FASTER Eligible Bridges

Region	Original Bridge Number	County	Facility Carried over	Featured Intersection	Budget	Status	Construction Start Date	Construction Completion Date	Project Delivery Method
1	F-19-AF	ADAMS	COUNTY ROAD over I 70 ML		TBD	Not Programmed	TBD	TBD	TBD
6	E-17-EZ	ADAMS	84TH AVE over I 25 ML		\$ 11,950,000	In Construction	01/27/11	09/26/12	In Construction
6	E-17-GM	ADAMS	I 76 ML EBND over SOUTH PLATTE RIVER NE of JCT I 270		\$ 14,535,000	In Construction	09/12/11	05/28/12	D-B-B w/ A+B bid
6	E-17-GL	ADAMS	I 76 ML WBND over SOUTH PLATTE RIVER NE of JCT I 270		See E-17-GM	In Construction	09/12/11	05/28/12	D-B-B w/ A+B bid
6	E-16-GQ	ADAMS	SH 95 ML (SHERIDAN BLVD) over UP RR, RR SPUR N of JCT I 70 in WHEATRIDGE		\$ 7,400,000	Design Completed	03/05/12	06/30/13	D-B-B
6	E-16-FP	ADAMS	80TH AVE over US 36 ML		\$ 11,360,000	Construction Complete	05/06/10	10/20/11	Construction Complete
6	E-17-ER	ADAMS	SH 44 ML(104TH AVE) over BULL SEEP W of US 85		\$ 10,127,000	In Design	02/18/13	06/01/14	D-B-B with option to convert
6	E-17-CA	ADAMS	SH44 ML(104TH AVE) over SOUTH PLATTE RIVER W of JCT US 85		See E-17-ER	In Design	02/18/13	06/01/14	D-B-B with option to convert
6	E-17-EX	ADAMS	PEORIA STREET over I 76 ML NE of JCT US 85		\$ 5,928,000	in Design	08/06/12	06/05/13	D-B-B
6	E-17-DC	ADAMS	I 76 ML EBND over UP RR E of JCT US 85		\$ 11,750,000	in Design	02/04/13	04/07/14	D-B-B
6	E-17-DU	ADAMS	I 76 ML WBND over UP RR E of JCT US 85		See E-17-DC	in Design	02/04/13	04/07/14	D-B-B
6	E-17-HG	ADAMS	104TH AVE over I 25 ML		\$ 8,537,000	Construction Complete	05/21/09	12/20/10	Construction Complete
6	E-17-AR	ADAMS	SH 7 ML over SOUTH PLATTE RIVER		\$ 5,496,000	Construction Complete	05/19/09	01/07/11	Construction Complete
6	E-17-DM	ADAMS	I 76 ML WBND over UP RR		\$ 6,750,000	Construction Complete	--	--	Construction Complete
6	E-17-DN	ADAMS	I 76 ML EBND over UP RR		See E-17-DM	Construction Complete	--	--	Construction Complete
6	E-17-HL	ADAMS	I 76 ML EBND over SH 224 ML		See E-17-DM	Construction Complete	--	--	Construction Complete
6	E-17-EP	ADAMS	SH6 DITCH RIDER RD over BURLINGTON CANAL SR		\$ -	No Action Required	--	--	No Action Required
6	E-17-IC	ADAMS	YORK STREET over I 270 ML		TBD	Not Programmed	TBD	TBD	TBD
1	F-19-B	ARAPAHOE	US 36 ML over COMANCHE CREEK E of STRASBURG		\$ 2,696,000	In Design	04/02/12	08/31/12	D-B-B
6	F-17-F	ARAPAHOE	US 40 ML(E COLFAX) EBND over SAND CREEK E of I-225		\$ 18,737,000	In Design	03/01/13	10/31/14	D-B-B
6	F-17-BS	ARAPAHOE	US 40 ML(E COLFAX) WBND over SAND CREEK E of I-225		See F-17-F	In Design	03/01/13	10/31/14	D-B-B
6	F-16-F	ARAPAHOE	US 85(SANTA FE) ML NBND over DAD CLARK GULCH in LITTLETON		\$ 3,986,000	In Design	10/12/12	10/31/13	D/B
6	F-17-DM	ARAPAHOE	SH 88 ML/ARAP RD over CHERRY CREEK W OF SH 83(PARKER RD)		\$ 20,853,000	In Design	02/01/13	01/31/15	D-B-B with option to convert
6	F-17-GO	ARAPAHOE	US 40 ML(E COLFAX) EBND over TOLLGATE CREEK W of I-225		\$ 12,300,000	in Design	04/01/14	10/31/15	D-B-B
6	F-16-FY	ARAPAHOE	US 285 ML SBND over SH 88 ML		See F-16-AM	Construction Complete	08/31/10	07/31/11	Construction Complete
6	F-16-FZ	ARAPAHOE	US 285 ML NBND over SH 88 ML		See F-16-AM	Construction Complete	08/31/10	07/31/11	Construction Complete
2	O-26-L	BACA	US 160 ML over CAT CREEK W of SPRINGFIELD		\$ 5,730,000	In Design	03/19/12	12/27/12	Modified D/B
2	O-25-I	BACA	US 160 ML over DRAW W of PRITCHETT		See O-26-L	In Design	03/19/12	12/27/12	Modified D/B

List of FASTER Eligible Bridges

Region	Original Bridge Number	County	Facility Carried over Featured Intersection	Budget	Status	Construction Start Date	Construction Completion Date	Project Delivery Method
2	O-25-H	BACA	US 160 ML over N FK SAND ARROYO SW of PRITCHETT	See O-26-L	In Design	03/19/12	12/27/12	Modified D/B
2	M-24-B	BENT	SH 101 ML over DRAW S of LAS ANIMAS and JCT US 50	\$ 7,381,000	Design Completed	03/02/12	10/31/12	Modified D/B
2	L-24-F	BENT	SH 101 ML over PURGATOIRE RIVER S of LAS ANIMAS	See M-24-B	Design Completed	03/02/12	10/31/12	Modified D/B
4	E-15-AA	BOULDER	SH 170 ML over COMMUNITY DITCH AR	\$ -	No Action Required	--	--	No Action Required
6	E-16-FL	BROOMFIELD	CNTY RD / OLD WADS over US 36 ML (DENVER/BOULDER TNPK) SE of JCT SH 121	\$ 14,636,000	Design Completed	06/01/12	09/30/13	D/B
6	E-16-FK	BROOMFIELD	SH 121 ML SBND- WADSWORTH PKWY over US 36 ML (DENVER/BOULDER TNPK)	\$ 29,791,000	Design Completed	06/01/12	09/30/13	D/B
1	F-14-B	CLEAR CREEK	I 70 FRONTAGE RD over CLEAR CREEK (SR) W IDAHO SPRINGS	\$ 1,924,000	Construction Complete	07/19/10	11/23/10	Construction Complete
1	F-14-Y	CLEAR CREEK	I 70(BUSINESS RT) over I 70 ML	TBD	Not Programmed	TBD	TBD	TBD
1	F-15-BL	CLEAR CREEK	I 70 ML WBND over US 6, CLEAR CREEK	TBD	Not Programmed	TBD	TBD	TBD
1	F-15-D	CLEAR CREEK	I 70 FRONTAGE RD over CLEAR CREEK (SR)	TBD	Not Programmed	TBD	TBD	TBD
2	L-22-F	CROWLEY	SH 96 ML over BLACK DRAW	See K-23-B	Construction Complete	08/18/10	09/21/11	Construction Complete
2	L-21-U	CROWLEY	SH 96 ML over NUMA DRAIN CANAL	\$ -	Construction Complete	--	--	Construction Complete
6	F-17-AE	DENVER	SH 30 ML/HAVANA ST over CHERRY CREEK	\$ 5,779,000	In Construction	02/07/11	06/15/12	In Construction
6	E-17-GE	DENVER	I 70 ML WBND over SAND CREEK E of QUEBEC ST	\$ 12,794,000	In Construction	07/29/11	07/31/12	D-B-B w/ A+B bid
6	E-17-BY	DENVER	I 70 ML EBND over SAND CREEK E of QUEBEC ST	See E-17-GE	In Construction	07/29/11	07/31/12	D-B-B w/ A+B bid
6	F-16-DP	DENVER	I 25 ML over RDWY,RR, SOUTH PLATTE RVR BRONCO BRIDGE	\$ 24,360,000	In Construction	05/02/11	07/11/13	In Construction
6	F-16-DT	DENVER	I 25 ML NBND over US 85 ML (SANTA FE)	\$ 17,922,000	In Construction	07/11/11	07/01/13	D-B-B
6	F-16-DW	DENVER	I 25 ML SBND over US 85 ML (SANTA FE)	See F-16-DT	In Construction	07/11/11	07/01/13	D-B-B
6	F-16-FW	DENVER	US 287+SH 88 (FEDERAL) over US 40 ML (COLFAX)	\$ 10,213,000	In Construction	09/26/11	02/28/13	D-B-B
6	F-16-GG	DENVER	PERRY STREET over US 6 ML W of FEDERAL	\$ -	No Action Required	--	--	No Action Required
6	F-16-EJ	DENVER	US 6 ML over BNSF RR E SIDE OF I-25	\$ 10,800,000	In Design	09/02/12	03/01/14	D/B
6	E-16-FW	DENVER	PECOS STREET over I 70 ML in DENVER	\$ 22,335,000	In Design	06/02/12	10/15/13	CMGC
6	F-16-EF	DENVER	US 6 ML over SOUTH PLATTE RIVER W SIDE of I-25	\$ 70,000,000	In Design	12/01/12	12/01/14	D/B
6	F-16-EN	DENVER	US 6 ML over BRYANT STREET W SIDE OF I-25	See F-16-EF	In Design	12/01/12	12/01/14	D/B
6	E-17-AH	DENVER	ON 40TH AVE W of SH 2 ML over BNSF RR	\$ -	No Action Required	--	--	No Action Required
6	E-17-EW	DENVER	I 70 ML EBND over UP RR W of COLORADO BLVD	TBD	Not Programmed	TBD	TBD	TBD
6	F-16-BM	DENVER	SH 88 ML over RR, LAKEWOOD GULCH	\$ 6,000,000	Construction Complete	--	--	Construction Complete
6	E-17-FX	DENVER	I 70 ML over US 6, RR, CITY ST	TBD	Not Programmed	TBD	TBD	TBD

List of FASTER Eligible Bridges

Region	Original Bridge Number	County	Facility Carried over Featured Intersection	Budget	Status	Construction Start Date	Construction Completion Date	Project Delivery Method
6	E-17-DF	DENVER	I 70 ML WBND over UP RR	TBD	Not Programmed	TBD	TBD	TBD
6	E-17-JP	DENVER	I 70 ML over HAVANA ST, UP RR	TBD	Not Programmed	TBD	TBD	TBD
6	F-16-OG	DENVER	RAMP to I 25 NBND over US 6 ML	TBD	Not Programmed	TBD	TBD	TBD
1	G-16-B	DOUGLAS	US 85 ML over DRAW	TBD	Design Completed	TBD	TBD	Design Shelved
1	G-16-C	DOUGLAS	US 85 ML over DRAW	TBD	Design Completed	TBD	TBD	Design Shelved
1	G-17-A	DOUGLAS	US 85 ML over SAND CREEK	TBD	Not Programmed	TBD	TBD	TBD
3	F-09-H	EAGLE	US 6 ML over EAGLE RIVER E of EAGLE	\$ 5,305,000	In Construction	07/20/11	05/18/12	D-B-B
3	F-08-F	EAGLE	I 70 SERVICE RD over COLORADO RIVER (SR) N. of DOTSERO INT.	\$ 11,311,000	in Design	10/24/12	05/23/14	CMGC
3	F-11-AC	EAGLE	I 70 ML EBND over US 6, RR, EAGLE RIVER E of JCT SH 131	\$ 48,602,000	in Design	04/14/14	10/01/15	D-B-B
3	F-11-AB	EAGLE	I 70 ML WBND over US 6, RR, EAGLE RIVER E of JCT US 24	See F-11-AC	in Design	04/14/14	10/01/15	D-B-B
3	F-10-L	EAGLE	I 70 ML EBND over US 6, RR, EAGLE RIVER	TBD	Not Programmed	TBD	TBD	TBD
2	H-18-A	EL PASO	US 24 ML over BLACK SQUIRREL CREEK W of PEYTON	\$ 3,950,000	In Construction	11/15/11	12/02/12	D-B-B
2	I-17-AE	EL PASO	US 24 ML EBND over FOUNTAIN CREEK	See H-16-K	Construction Complete	08/04/10	10/21/10	Construction Complete
2	H-17-M	EL PASO	I 25 ML over DRAW	TBD	Not Programmed	TBD	TBD	CDOT Maintain/Repair
2	I-18-G	EL PASO	US 24 ML over DRAW E of FALCON	\$ -	Construction Complete	--	--	Construction Complete
2	J-18-S	EL PASO	I 25 ML NBND over DRAW S of FOUNTAIN	\$ 1,500,000	Design Completed	03/05/12	08/17/12	Streamlined D/B
2	J-18-T	EL PASO	I 25 ML NBND over DRAW S of FOUNTAIN	See J-18-S	Design Completed	03/05/12	08/17/12	Streamlined D/B
2	I-17-O	EL PASO	I 25 SERVICE RD over PINE CREEK S of JCT SH 56	TBD	Not Programmed	TBD	TBD	TBD
1	G-21-B	ELBERT	I 70 FRONTAGE RD over DRAW (SR)	\$ 4,065,000	In Design	06/08/13	10/24/13	D-B-B
1	G-21-Y	ELBERT	I 70 BUSINESS SPUR over I 70 ML	\$ -	No Action Required	--	--	No Action Required
2	K-16-K	FREMONT	SH 120 ML over RR, ARKANSAS RIVER E of PORTLAND	\$ 5,716,000	Design Completed	03/02/12	03/02/13	D-B-B
2	J-15-B	FREMONT	SH 9 ML over CURRANT CREEK NW of JCT US 50	\$ 2,629,000	Construction Complete	05/04/11	10/31/11	Modified D/B
2	K-16-S	FREMONT	SH 120 ML over DRAW, UP RR E of FLORENCE	\$ 5,200,000	In Design	03/15/13	04/15/14	D-B-B
2	K-16-Q	FREMONT	SH 120 ML over HARDSCRABBLE CREEK	\$ -	Construction Complete	--	--	Construction Complete
2	K-14-J	FREMONT	US 50 ML over DRAW	TBD	Not Programmed	TBD	TBD	TBD
3	F-07-A	GARFIELD	SH 82 ML over I70 ML, COLORADO RVR,RR GLENWOOD SPRINGS	\$ 59,020,000	in Design	02/17/15	11/20/17	CMGC
3	F-05-L	GARFIELD	I 70 ML WBND over COLORADO RIVER	TBD	Not Programmed	TBD	TBD	TBD
3	J-09-C	GUNNISON	US 50 SERVICE RD over GUNNISON RVR OVERFLOW (SR) W. SIDE of GUNNISON	\$ 3,000,000	In Construction	08/29/11	09/30/12	D-B-B

List of FASTER Eligible Bridges

Region	Original Bridge Number	County	Facility Carried over Featured Intersection	Budget	Status	Construction Start Date	Construction Completion Date	Project Delivery Method
3	J-09-D	GUNNISON	US 50 SERVICE RD over GUNNISON RVR (SR) W. SIDE of GUNNISON	See J-09-C	In Construction	08/29/11	09/30/12	D-B-B
3	J-09-G	GUNNISON	SH 114 ML over TOMICHI CREEK	\$ -	Construction Complete	--	--	Construction Complete
2	N-17-N	HUERFANO	I 25 ML NBND over MISSOURI CREEK	\$ 2,522,000	Construction Complete	01/27/11	09/01/11	Construction Complete
2	O-16-A	HUERFANO	SH 12 ML over CUCHARAS RIVER S of LA VETA	See P-17-H	Design Completed	02/28/12	10/15/12	Modified D/B
2	N-16-L	HUERFANO	SH 69 ML over TURKEY CREEK	\$ 2,475,000	Construction Complete	06/22/11	07/15/11	Construction Complete
2	N-17-AD	HUERFANO	I 25 ML SBND over US 160 ML, RR SPUR	TBD	Not Programmed	TBD	TBD	TBD
2	M-16-P	HUERFANO	SH 69 ML over MILLIKEN ARROYO	TBD	Not Programmed	TBD	TBD	TBD
2	N-17-C	HUERFANO	I 25 BUS RT over SULL CREEK	TBD	Not Programmed	TBD	TBD	TBD
6	F-16-CS	JEFFERSON	SH121 ML-WADSWORTH over BEAR CREEK N OF 285	\$ 11,404,000	Design Completed	02/27/12	05/23/13	D-B-B
6	F-16-FL	JEFFERSON	US 6 ML over SH 95 ML/SHERIDAN AVE.	\$ 14,170,000	In Construction	12/16/11	08/06/13	D-B-B
6	F-16-AM	JEFFERSON	US 285 ML SBND over SH 121 ML	\$ 47,396,000	Construction Complete	08/31/10	07/31/11	Construction Complete
6	F-16-AY	JEFFERSON	US 285 ML NBND over SH 121 ML	See F-16-AM	Construction Complete	08/31/10	07/31/11	Construction Complete
6	F-16-I	JEFFERSON	US 285 ML SBND over PIERCE STREET	See F-16-AM	Construction Complete	08/31/10	07/31/11	Construction Complete
6	E-16-FX	JEFFERSON	WASHINGTON STREET over SH 58 ML	\$ 6,098,000	Construction Complete	02/20/08	11/02/09	Construction Complete
6	E-16-HI	JEFFERSON	SH 58 ML over CO.RD,RR SPUR	\$ -	Construction Complete	--	--	Construction Complete
6	E-16-HA	JEFFERSON	SH 58 ML over FORD STREET, WASH	\$ 9,122,000	In Design	05/30/13	05/28/14	D-B-B
2	K-23-B	KIOWA	SH 96 ML over DRAW	\$ 3,591,000	Construction Complete	08/18/10	09/21/11	Construction Complete
2	K-23-C	KIOWA	SH 96 ML over DRAW	See K-23-B	Construction Complete	08/18/10	09/21/11	Construction Complete
2	K-24-A	KIOWA	SH 96 ML over DRAW	See K-23-B	Construction Complete	08/18/10	09/21/11	Construction Complete
5	O-05-AQ	LA PLATA	US 160 ML over ANIMAS RIVER	\$ 807,000	Construction Complete	07/26/10	11/23/10	Construction Complete
3	G-11-F	LAKE	US 24 ML over UP RR	\$ 6,892,000	Construction Complete	12/30/10	11/09/11	Construction Complete
4	B-16-AE	LARIMER	US 287 ML over DRAWN of JCT SH 1	\$ 4,322,000	In Construction	07/25/11	06/01/12	D-B-B
4	B-16-D	LARIMER	SH 14 ML over CACHE LA POUDDRE RIVER E of JCT US 287	\$ 13,282,000	In Design	06/01/13	05/31/14	D-B-B
4	C-15-I	LARIMER	US 34 ML over BIG THOMPSON RIVER	\$ 5,363,000	Construction Complete	08/17/09	06/30/10	Construction Complete
4	C-15-J	LARIMER	US 34 ML over BIG THOMPSON RIVER	See C-15-I	Construction Complete	08/17/09	06/30/10	Construction Complete
4	C-17-EL	LARIMER	I 25 ML over DRAW	\$ -	No Action Required	--	--	No Action Required
4	B-16-EU	LARIMER	COUNTY ROAD 48 over I 25 ML	TBD	Not Programmed	TBD	TBD	TBD

List of FASTER Eligible Bridges

Region	Original Bridge Number	County	Facility Carried over Featured Intersection	Budget	Status	Construction Start Date	Construction Completion Date	Project Delivery Method
2	P-17-H	LAS ANIMAS	SH 12 ML over PURGATOIRE RIVER NW of WESTON	\$ 4,040,000	Design Completed	02/28/12	10/15/12	Modified D/B
2	O-19-H	LAS ANIMAS	US 350 ML over PURGATOIRE RIVER NE of JCT US 160	\$ 5,350,000	In Design	03/15/13	11/15/13	D-B-B
2	P-18-B	LAS ANIMAS	I 25 ML NBND over PURGATOIRE RIVER	\$ -	Construction Complete	--	--	Construction Complete
2	P-18-S	LAS ANIMAS	I 25 ML SBND over PURGATOIRE RIVER	\$ -	Construction Complete	--	--	Construction Complete
2	O-19-J	LAS ANIMAS	US 350 ML over DRAW S of MODEL	\$ 2,700,000	In Design	12/15/12	07/01/13	D-B-B
2	P-19-AD	LAS ANIMAS	SH 239(CO RD 75) ML over IRRIGATION CANAL in TRINIDAD	See O-19-J	In Design	12/15/12	07/01/13	D-B-B
2	P-23-A_MINOR	LAS ANIMAS	US 160 ML over SMITH CANYON	TBD	Not Programmed	TBD	TBD	TBD
1	G-22-J	LINCOLN	US 24 ML over DRAW E of LIMON	\$ 1,215,000	Construction Complete	05/02/11	08/24/11	Construction Complete
4	A-24-C A-26-F	LOGAN SEDGWICK	US 138 ML over DITCH/DRAW	\$ 870,000	Construction Complete	10/01/10	12/15/10	Construction Complete
3	G-03-Q	MESA	I 70 ML WBND over COLORADO RIVER OVERFLOW	TBD	Not Programmed	TBD	TBD	TBD
2	L-22-O	OTERO	SH 266 ML over HOLBROOK CANAL NE of ROCKY FORD	\$ 6,563,000	In Design	05/01/12	10/07/12	CMGC
2	L-22-E	OTERO	SH 266 ML over FT LYON STORAGE CANAL NE of ROCKY FORD	See L-22-O	In Design	05/01/12	10/07/12	CMGC
2	L-22-K	OTERO	SH 71 ML over FT LYON CANAL NW of ROCKY FORD	See L-22-O	In Design	05/01/12	10/07/12	CMGC
2	M-21-D	OTERO	US 350 ML over DRAW SW of LA JUNTA & TIMPAS	\$ 2,619,000	In Construction	10/19/11	04/20/12	D-B-B
5	L-05-B	OURAY	SH 62 ML over UNCOMPAGRE RIVER SHERMAN ST in RIDGWAY	\$ 7,859,000	In Design	04/19/12	11/12/13	D-B-B
5	L-06-A	OURAY	US 550 ML over BEAR CREEK	\$ 5,851,000	Construction Complete	07/26/10	10/24/11	Construction Complete
1	G-12-L	PARK	SH 9 ML over BUCKSKIN GULCH in ALMA	\$ 436,000	Construction Complete	9/5/11	12/29/11	D-B-B
3	H-09-B	PITKIN	SH 82 ML over CO RD, CASTLE CREEK	\$ 982,000	Construction Complete	01/27/11	07/21/11	Construction Complete
2	L-28-F	PROWERS	SH 89 ML over ARKANSAS RIVER S of HOLLY	\$ 6,930,000	Construction Complete	02/16/11	12/01/11	D-B-B
2	L-27-S	PROWERS	US 50 ML over DRAW E of LAMAR	See L-28-C	In Design	03/01/13	02/28/14	D-B-B
2	L-28-C	PROWERS	US 50 ML over BNSF RR E of GRANADA	\$ 5,950,000	In Design	03/01/13	02/28/14	D-B-B
2	K-18-AX	PUEBLO	I 25 ML NBND over US 50 ML	TBD	Not Programmed	TBD	TBD	TBD
2	K-18-CL	PUEBLO	I 25 ML SBND over NP RR, ILEX ST, BENNET ST S of JCT SH 96	\$ 39,890,000	In Design	06/02/13	05/15/15	D/B
2	K-18-CK	PUEBLO	I 25 ML NBND over NP RR, ILEX ST, BENNET ST N of JCT SH 50 E	See K-18-CL	In Design	06/02/13	05/15/15	D/B
2	K-18-R	PUEBLO	US 50 BUS EBND over ARKANSAS RIVER	TBD	Not Programmed	TBD	TBD	TBD
2	K-18-Z	PUEBLO	SH 96 ML over RDWY, RR, ARKANSAS RVR	\$ 44,123,000	Construction Complete	11/07/07	04/01/11	Construction Complete
2	L-18-AQ	PUEBLO	NORTHERN AVE over I 25 ML	TBD	Not Programmed	TBD	TBD	TBD
2	L-18-M	PUEBLO	I 25 ML NBND over INDIANA AVE	TBD	Not Programmed	TBD	TBD	TBD

List of FASTER Eligible Bridges

Region	Original Bridge Number	County	Facility Carried over	Featured Intersection	Budget	Status	Construction Start Date	Construction Completion Date	Project Delivery Method
2	L-18-W	PUEBLO	I 25 ML SBND over	INDIANA AVE	TBD	Not Programmed	TBD	TBD	TBD
2	L-19-C	PUEBLO	US 50 BUS RT WBND over	ST CHARLES RIVER	\$ 2,957,000	Construction Complete	10/16/09	07/22/10	Construction Complete
2	M-17-R	PUEBLO	I 25 ML over	DRAW	\$ -	Construction Complete	--	--	Construction Complete
2	M-20-A	PUEBLO	SH 10 ML over	SAUNDERS ARROYO	\$ -	Construction Complete	--	--	Construction Complete
3	C-09-C	ROUTT	US 40 ML over E FORK ELK RIVER	W of STEAMBOAT SPGS	\$ 10,501,000	In Design	05/01/14	07/29/15	D-B-B
5	M-06-K	SAN JUAN	US 550 ML over	MINERAL CREEK	\$ 3,652,000	Construction Complete	08/17/09	06/01/11	Construction Complete
5	L-04-B	SAN MIGUEL	SH 145 ML over LEOPARD CREEK	JCT SH 62 - PLACERVILLE	\$ 4,059,000	In Design	05/16/12	09/12/13	D-B-B
2	H-16-K	TELLER	SH 67 ML over	DRAW	\$ 2,617,000	Construction Complete	08/04/10	12/31/10	Construction Complete
2	I-15-Y	TELLER	US 24 ML over	TWIN CREEK	See H-16-K	Construction Complete	08/04/10	10/21/10	Construction Complete
4	C-17-BN	WELD	I 25 SERVICE RD over	LITTLE THOMPSON RIVER S of JCT SH 56	\$ 3,400,000	In Design	09/03/12	02/28/13	D/B
4	D-17-AK	WELD	SH 66 ML over	ST VRRAIN RIVER W of PLATTEVILLE	\$ 4,600,000	In Design	09/24/12	08/15/13	D-B-B
4	C-18-BK	WELD	US 85 BYPASS SBND over	US 85 BUS RT	TBD	Not Programmed	TBD	TBD	TBD
4	D-19-A	WELD	I 76 SERVICE RD over	LOST CREEK SR	TBD	Not Programmed	TBD	TBD	TBD
4	B-17-L	WELD	SH 14 ML over	COALBANK CREEK W of AULT	\$ 4,441,000	In Design	08/06/12	01/11/13	D-B-B
4	B-17-C	WELD	US 85 ML (NUNN BRIDGE) over	UPRR	\$ 7,597,000	In Design	02/02/13	09/12/13	D-B-B
4	D-28-B	YUMA	US 34 ML over N FK	REPUBLICAN RIVER W of LAIRD	\$ 3,451,000	In Design	07/21/12	11/30/12	D-B-B

Colorado State Map of FASTER Eligible Bridges

