

# Colorado Bridge Enterprise

Quarterly Report No. 02 (Q1 FY2012)

November 16, 2011

## Introduction

This report is the second Quarterly Report (or Report) published in support of the Colorado Bridge Enterprise (“Program”). This Report outlines progress and accomplishments associated with the Program for work complete during July, August and September of 2011; which coincides with the first quarter of CDOT’s 2012 fiscal year (Q1 FY2012). Detailed information regarding the FASTER (Funding Advancements for Surface Transportation and Economic Recovery) legislation, program development activities, bond program, previous significant milestones and achievements can be found in the Program Annual Reports and previous Quarterly Reports. Past Annual and Quarter reports can be viewed on the CDOT website at [www.coloradodot.info/programs/BridgeEnterprise](http://www.coloradodot.info/programs/BridgeEnterprise).

During this quarter, the Program primarily focused on the delivery of bridge projects partially or fully funded by the \$300M bond program. The following is an itemization of significant achievements which are discussed in further detail later in the report:

- CDOT executed Task Order Nos. 02 and 03 with the Bridge Enterprise Program Manager to provide program management and support services for CDOT FY2012.
- The Program completed monthly updates to the bond program schedule; for work complete in July, August and September.
- Program conducted the first Schedule Change Control Board meeting.
- Program continued to identify and develop Process & Procedure guidance documents necessary to facilitate project / program delivery.
- CDOT was notified that it had been selected to receive a Highways for Life (HfL) grant in the amount of \$3.76M for the Pecos Street Bridge over I-70 ML project.
- Finalized the Construction Management / General Contracting (CM/GC) request for proposal selection template with CDOT’s Innovative Contracting Advisory Council (ICAC).
- Issued Letter of Interest and drafted Request for Proposal for an Independent Cost Estimating (ICE) services to support CM/GC contract delivery.
- Awarded three statewide CM/Materials Testing contract; contracts valued at \$3.0M each.
- Assisted CDOT Regional project teams with strategic planning associated with major Bridge Enterprise projects /programs.
- Completed 1<sup>st</sup> Quarterly report.

## Program Highlights

The bulk of the Program scope is currently within the preconstruction phase where the primary focus is completion of the PS&E’s (Plans, Specifications and Estimates). In conjunction with this, CDOT specialty groups are diligently working on completing the requisite approvals and permits associated with environmental, railroad, and utility clearances; securing the necessary Right-of-Way (ROW); and finalizing intergovernmental agreements (as required), etc. Per the current program schedule, construction work increases significantly in the later part of FY2012.

As of the end of September 2011, there were a total of one-hundred and fifty-four (154) FASTER eligible bridges. The progress status associated with these 154 structures is itemized in Table 1 below.

**Table 1.** Project Status as of Q1 FY2012

<b>Project Phase</b>	<b>Bridge Number</b>
Future Projects	30
In Design Phase	60
In Construction Phase	18
Projects Complete <sup>(1)</sup>	40
No Longer Considered	6
<b>Total <sup>(2) (3)</sup></b>	<b>154</b>

(1) Reference Appendix A for List of Completed Bridges

(2) Reference Appendix B for complete List of FASTER Eligible bridges

(3) Reference Appendix C for Colorado State map of FASTER eligible bridges

Other relevant bridge and financial statistics are as follows:

- Approximately 37% of FASTER eligible bridges are now either in construction or completed.
- A total of seventy-two (72) bridges are partially (preconstruction phase only) or fully funded (preconstruction and construction) by the \$300M bond program.
- Additionally, \$83.8M (\$8.8M expended + \$75.0M encumbered) of bond program funds have been expended or encumbered to date (reference Table 8.0).

The program schedule progress and performance information presented in Table 2 shows the value of the work complete through Q1 FY2012 as compared to what had been planned to be completed per the baseline schedule. The earned value of work complete to date is \$49.6M as compared to the planned value of the work scheduled to be completed at \$57.0M; which indicates that the program is approximately 13% behind the plan.

Note - Earned Value at the lowest level is attained by multiplying the % complete of a project activity by its respective budget. Earned value is rolled-up from the project level to the region level, and then again rolled-up from the region level to the program level.

**Table 2.** Q1 FY2012 Earned Value by CDOT Region and Program

<b>CDOT Region</b>	<b>Planned Value of Work through September 30<sup>th</sup></b>	<b>Earned Value of Work through September 30<sup>th</sup></b>	<b>Schedule Variance</b>
1	\$ 2,186,532	\$ 1,753,859	\$ (432,673)
2	\$ 16,215,594	\$ 15,153,245	\$ (1,062,349)
3	\$ 4,627,054	\$ 4,672,133	\$ 45,079
4	\$ 5,698,105	\$ 4,735,757	\$ (962,348)
5	\$ 1,051,302	\$ 1,136,846	\$ 85,544
6	\$ 27,263,536	\$ 22,196,762	\$ (5,066,774)
<b>Total</b>	<b>\$57,042,124</b>	<b>\$ 49,648,602</b>	<b>\$ (7,393,522)</b>

As previously noted, the Program has implemented cost and schedule Key Performance Indicators (or KPIs) to track, monitor and report on program performance. As part of the monthly schedule update, a Schedule Performance Index (or SPI) is calculated for each project included within the bond program. The SPI is also calculated and reported at the regional and program levels. The SPI is based upon earned value which compares actual progress to planned performance based upon work complete to date. The program SPI for work complete through September 30<sup>th</sup> was 0.87; which represented a 0.22 increase from the previous quarterly report. The program has established a SPI goal during execution of 0.90.

The program has seen a steady improvement in the SPI from the previous quarterly report and incremental increases from month to month. The SPI improvement can be attributed to the following factors:

- The first Schedule Change Control Board (SCCB) meeting was conducted on August 15, 2011; whereby the regions were allowed to petition the Board to make adjustments to the baseline schedule. For the most part, the Board only allowed baseline adjustments to reflect changes in contract delivery (D/B and CM/GC). The baseline schedules were initially set-up based upon a design-bid-build delivery, and the baseline schedule logic was artificially impacting the SPI calculation.
- The usage of the SPI metric is new to CDOT; and as such, there is a learning curve associated with its application and understanding how it's calculated. Over the past three months, CDOT staff has gained a better working knowledge on developing the requisite cost and schedule information necessary to update the schedule thereby resulting in a more accurate reflection of current progress.

Note - the SCCB policy is not intended to automatically provide relief to a project with a low SPI. Any and all changes must have rationale to justify a baseline schedule change. In addition, the regional teams did not realize the projects were going to be measured in this manner when they were initially developed.

## Program Activities and Accomplishments in Q1 FY2012

The Program's main activities and significant accomplishments during Q1 FY2012 are briefly described below.

### Policy change to transfer of bridges to Bridge Enterprise

CDOT implemented an accounting procedure that no longer requires a Board resolution to transfer a structure from CDOT to Bridge Enterprise. This policy only pertains to replacement projects where the existing bridge ID is retired once the structure is taken out of service. Bridge Enterprise funding is applied to the new structure which is assigned a new Bridge ID. Rehabilitation projects will still have to be transferred from CDOT to Bridge Enterprise via Board resolution (as they retain their original bridge ID) to utilize FASTER funding. Bridge Enterprise in concert with CDOT Finance and Accounting and Staff Bridge personnel developed a guidance policy outlining this new approach. Due to this new accounting approach, there were no bridges transferred during the period and two new bridges were incorporated (or rolled-into) the program as itemized in Table 3.

**Table 3.** Bridge Structures incorporated into the Bond Program

Region	Bridge ID	Facility Carried over Featured Intersection
1	G-21-B	I-70 Frontage Road over Draw
4	B-17-C	US 85, Nunn Bridge over UPRR

### Pre-Construction Phase

There were ten projects that began the pre-construction phase as itemized in Table 4 below.

**Table 4.** Projects that Started Pre-construction

Region	Bridge ID	Facility Carried over Featured Intersection
1	G-21-B	I-70 Frontage Road over Draw
1	G-21-Y	I-70 Business Spur over I-70 ML
2	L-22-K	SH 71 ML over Ft Lyon Canal NW of Rocky Ford
6	E-17-ER	SH 44 ML (104 <sup>th</sup> Ave) over Bull Seep
6	E-17-CA	SH 44 ML (104 <sup>th</sup> Ave) over So Platte River
6	F-16-F	US 85 (Santa Fe) ML NBND over Dad Clark
6	F-17-F	US 40 ML (E Colfax) EBND over Sand Creek
6	F-17-BS	US 40 ML (E Colfax) WBND over Sand Creek
6	F-16-EF	US 6 ML over South Platte River
6	F-16-EN	US 6 ML over Bryant Street

### Projects that went to AD (advertisement for construction)

There were seven projects (or nine bridges) that went to AD during the period as itemized in Table 5 below.

**Table 5.** Projects / Bridges that went to AD

Region	Bridge ID	Facility Carried over Featured Intersection
2	H-18-A	US 24 ML over Black Squirrel Creek
2	K-16-K	SH 120 ML over RR, Arkansas River
2	L-22-E	SH 266 ML over Ft Lyon Storage Canal
2	L-22-O	SH 266 ML over Holbrook Canal
2	L-22-K	SH 71 ML over Ft Lyon Canal
2	M-21-D	US 350 ML over Draw
6	E-16-GQ	SH 95 ML (Sheridan Blvd) over UPRR, RR Spur
6	E-16-FL	Cnty Road/Old Wads over US 36 ML (Denver/Boulder Tnpk)
6	F-16-FK	SH 121 ML SBND-Wadsworth Pkwy over US 36 ML (Denver / Boulder Tnpk)

**Completed Projects**

Thirteen bridges were completed during the quarter as itemized in Table 6 below.

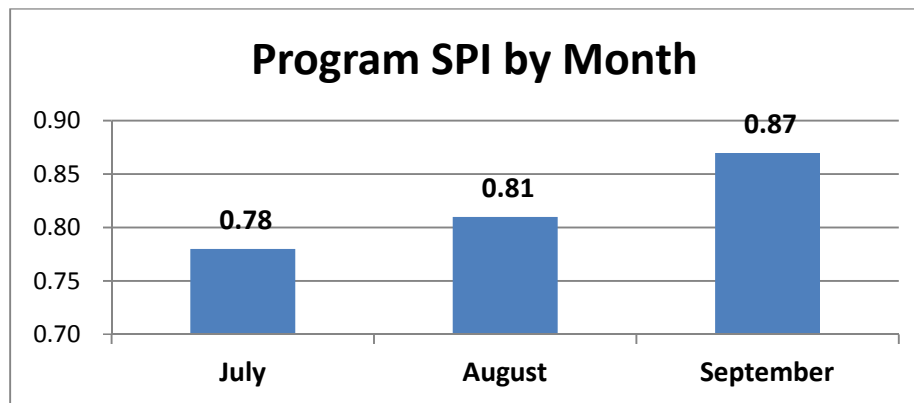
**Table 6.** Completed Bridge Projects

Region	Bridge ID	Facility Carried over Featured Intersection
1	G-22-J	US 24 ML over Draw
2	N-17-N	I 25 ML NBND over Missouri Creek
2	N-16-L	SH 69 ML over Turkey Creek
2	L-22-F	SH 96 ML over Black Draw
2	K-23-B	SH 96 ML over Draw
2	K-23-C	SH 96 ML over Draw
2	K-24-A	SH 96 ML over Draw
3	H-09-B	SH 82 ML over County Road
6	F-16-FY	US 285 ML SBND over SH 88 ML
6	F-16-FZ	US 285 ML NBND over SH 88 ML
6	F-16-AM	US 285 ML SBND over SH 121
6	F-16-AY	US 285 ML NBND over SH 121 ML
6	F-16-I	US 285 ML SBND over Pierce Street

**Program Schedule Update**

The bond program schedule was updated three times; for work complete in July, August and September. This includes publishing the monthly updated bar-chart program schedule, cost and schedule matrix, and list of projects with an SPI < 0.90 sorted by Region. This information was consolidated and distributed to the Region RTD's and program engineers. In addition, the BE program manager reviewed the information with the regional program engineers in advance of the first Schedule Change Control Board meeting as further described below. The SPI's reported for each month during the quarter are graphically depicted on Figure 1.

**Figure 1.** Bond Program SPI Reported by Month



### **Schedule Change Control Board**

The first Schedule Change Control Board meeting was conducted on August 15<sup>th</sup>, 2011. The SCCB consisted of CDOT's Executive Director (Don Hunt), CDOT's Chief Engineer (Tim Harris) and Director of Staff Branches (Scott McDaniel), and the six regional RTD's. The purpose of the SCCB meeting is (was) two-fold: (1) document and review projects with an SPI < 0.90, and (2) allow the RTD's the opportunity to petition the SCCB to make adjustments to a project's baseline schedule when the schedule logic does not reflect current project delivery and is artificially impacting the SPI calculation. Formal meeting minutes were published with a list of attendees and a itemized list of SCCB approved changes; subject changes were incorporated into the program schedule during the September schedule update.

A SCCB guidance document has been developed which provides guidelines on conducting the SCCB meeting. As previously noted the purpose of the SCCB is not to provide relief to poorly performing projects. Any baseline adjustments must properly document project issues, and justifiable rationale on proposed adjustments including recommendations to improved project delivery, issues mitigation, required supplemental staffing, and proposed recovery schedules (as necessary).

### **BE Guidance Documents**

Bridge Enterprise in collaboration with CDOT staff continues to develop requisite process and procedures (P&P) documents to assist and facilitate the delivery of the program. The following is and itemization of P&P documents completed and/or currently in development.

- Project Funding Eligibility review policy (completed)
- Schedule Change Control Board Process (completed)
- New bridge accounting process for replacement of bridge projects (eliminating old resolution transfer policy – drafted)
- Quarterly Bridge assessment policy to identify “poor bridges” (current policy reviewed bridges annually - completed)

- Currently assisting ICAC on development of a Design / Build guidance document that outlines interface and usage of Trns\*Port, Site Manager and defines the process to approve monthly Contractor invoices from an auditing perspective.
- Completed initial draft of proposed Site Assessment Policy. Subject policy was given to the Region 2 and 6 Program Engineers and various CDOT specialty groups for review and input.
- Working on technical memorandum to describe what is expected of a 30 year design life for rehabilitation.
- Working on technical memorandum regarding continued eligibility of “poor” rated bridge (Sufficiency Rating < 50); which addresses bridges that under-go maintenance repairs raising SF > 50 but still maintain FASTER eligibility.

In addition, Bridge Enterprise continues to provide instructional guidance with CDOT staff on the usage and application of all BE guidance documents which are posted internally on the CDOT intranet and BE SharePoint site.

#### **Discretionary Grant Applications**

FHWA notified CDOT that had been selected to receive a Highway for Life (HfL) grant in the amount of for \$3.76M for the Pecos Street Bridge over I-70 ML replacement project. The project was selected based upon its intent to utilize CM/GC contracting and deployment of accelerated bridge construction (ABC) techniques consistent with FHWA’s every-day counts initiatives. In the press release from U.S. Transportation Secretary Ray LaHood, the project was one of only two projects highlighted from the 1800 applications submitted.

In addition, CDOT was also informed that its Innovative Bridge Replacement and Deployment (IBR&D) grant application had not been selected. The grant application was based upon a Region 2 project where three bridges (L-22-E, O and K) were packaged into one project. The project will move forward with the planned CM/GC contracting delivery and innovative ABC techniques.

#### **Major Project/Program Strategic Planning and Coordination**

Bridge Enterprise continues to work intimately with various CDOT project teams on coordination, funding eligibility, and strategic planning issues associated with the following large projects / programs:

- Region 2 (New Pueblo I-25 EIS): Bridge Enterprise is supporting the pair of Ilex bridges from a funding eligibility and environmental phasing perspective. In addition, the Region is evaluating the possibility of adding the Indiana Ave. and Northern Ave. bridges into the program.
- Region 3 SH 82 Grand Ave bridge in Glenwood Springs: Continued support with the Project Leadership Team meetings.
- Region 3 Dotsero bridge: Release of CM/GC RFP, CM/GC presentation to CCA, SAP set up procedures for CM/GC.



- Region 6: Pecos Street over I-70 ML: Attendance at weekly meetings, Project Website development, CM/GC template RFP, budgeting and accounting assistance, attended open house event, FHWA coordination on project goals and HfL (grant application) requirements.
- Region 6: US 36 Corridor Design / Build project; Assisted CDOT project team on securing necessary FASTER funding for two BE-eligible bridges.
- Region 6: 6<sup>th</sup> Avenue Design / Build project: Strategic planning associated with future Design/Build project and three BE bridges (BNSF RR, So. Platter River and Bryant bridges).

**Resolutions Approved by the Bridge Enterprise Board**

The following is a brief overview of resolutions passed by the Bridge Enterprise BOD or significant topics discussed during Q1 FY2012 as itemized in Table 7 below.

**Table 7.** Board Resolution / Significant Topics

<b>July BOD Meeting</b>
<ul style="list-style-type: none"> <li>▪ Adoption of 2nd budget supplement for FY2012</li> <li>▪ Update on Red Cliff Arch bridge</li> </ul>
<b>August BOD Meeting</b>
<ul style="list-style-type: none"> <li>▪ Adoption of 3rd budget supplement for FY2012</li> <li>▪ CDOT/BE website improvements</li> <li>▪ OCIP/ROCIP insurance update</li> <li>▪ Proposed Transfer of Bridge assets (new transfer policy)</li> <li>▪ New Policy to address “poor” bridges on a quarterly basis</li> </ul>
<b>September BOD Meeting</b>
<ul style="list-style-type: none"> <li>▪ Adoption of 4th budget supplement for FY2012</li> <li>▪ Acknowledgement of new BE Chairman and Vice Chair</li> <li>▪ HFL grant selection</li> </ul>

**Other Significant Achievements**

- Conducted project funding eligibility reviews with CDOT project teams and FHWA personnel.
- Continued with implementation of a programmatic agreement between CDOT and the UP and BNSF railroads.
- Developed electronic data collection form to streamline and consolidate collection of requisite cost and schedule information from regional staff to conduct monthly program schedule update.
- Supported CDOT’s Public Relations and Government Relations on improvements to the CDOT/Bridge Enterprise website.
- Region 6: DBE (small business contracting) open house support.
- Region 6 RTD and staff provided monthly updates at the Bridge Enterprise BOD meetings relative to the I-70 East Environmental Impact Statement (EIS) - future I-70 viaduct project.
- CDOT’s Office of Risk Management continues to explore the potential use of an Owner’s Controlled and/or a Rolling Owner’s Control Insurance Program (OCIP/ROCIP).

- Developed multiple presentations and attended internal meetings with CDOT staff and external stakeholders including:
  - PE III annual meeting
  - Bi-weekly progress meetings
  - Internal monthly standing meetings: Chief Engineers/RTD, Business Managers, STAC
  - Industry meetings with: CCA (Colorado Contractors Association), ACEC (American Council Engineering Companies), and ICAC
  - Monthly TPL planning meetings at Regions 1, 4 and 6.
  - CDOT Region business manager meetings
- Preparation of Board of Director workshop / regular meeting documents including: agendas, memorandums, Board resolutions, and Chief Engineer progress report.
- Complete 1<sup>st</sup> Bridge Enterprise Quarterly Report; Q4 FY2011 (April, May and June 2011).
- Attended Performance Data integration and Multi-Asset Management meetings with CDOT Staff.
- Supported OFMB on collecting budget supplements from regions for presentation at the monthly BOD.
- Standardized BE public information.

## Financial Information

The following is a program overview of financial statistics as of September 30, 2011.

- The program has multiple funding sources including: proceeds from the Build America Bond program, FASTER Bridge dollars which is commonly referred to as the statewide pay-go program (collected yearly revenues from vehicle registrations), Bank of America Loan, and Other Funds which is primarily Federal-aid BR funding.
- From program inception (or life-to-date), a total of \$290.1M has been budgeted (all funding sources), and Expenditures and Encumbrances are \$49.9M and \$102.8M (all funding sources), respectively. Reference Table 8 below for details by funding source.
- For comparison purposes, the totals from the previous quarterly report (Q4 FY2011) have also been reported in the far right column.
- Based upon the \$300M bond program baseline schedule developed in February 2011, approximately \$40.0M of bond dollars were projected to be expended by September 30, 2011; whereas, actual expenditures were \$8.8M but with \$75.0M in encumbrances.
- Note - The projected \$40.0M of bond expenditures included bond proceeds programmed for the replacement of the I-25 bridges over Santa Fe (Bridges F-16-DT and F-16-DW). The project was ultimately funded with only Federal BR funds and no bond proceeds.

**Table 8.** Program Financial Statistics as of September 30<sup>th</sup>, 2011 (\$ in Millions).

	<b>Build America Bonds 2010 A Proceeds</b>	<b>FASTER Bridge</b>	<b>Bank of America Loan</b>	<b>Other Funds</b>	<b>Total Q1 FY2012</b>	<b>Total Q4 FY2011</b>
<b>Budget</b>	\$180.6	\$45.3	\$40.0	\$24.2	<b>\$290.1</b>	\$233.8
<b>Expenditures</b>	\$8.8	\$11.7	\$20.0	\$9.4	<b>\$49.9</b>	\$33.1
<b>Encumbrances</b>	\$75.0	\$8.9	\$9.1	\$9.8	<b>\$102.8</b>	\$85.9

The \$300M bond program currently consists of seventy-two (72) projects; fifty (50) of these projects are fully funded for both the preconstruction and construction phases, and twenty-two (22) projects are only funded for the preconstruction phase. The estimated total cost for these seventy-two projects is approximately \$626.1M. Table 9 below provides an itemization of current funding sources and indicates that \$243.9M of additional funding (future bond issuance or other funding) will be necessary to complete all projects. The timing and projected amount of any future bond offerings has not yet been determined but is unlikely any additional bonds will be sold prior to the spring of 2013.

**Table 9.** Current Bond Allocation Plan (\$ in Millions)

<b>Build America Bonds</b>	<b>FASTER Bridge</b>	<b>Other Funds</b>	<b>Future Bond Issue or Other Funding</b>	<b>Total</b>
\$298.0	\$51.5	\$32.7	\$243.9	<b>\$626.1</b>

## Economic Outlook

The following are highlights from project bid data results maintained by CDOT's Engineering Estimates and Market Analysis group for transportation related projects advertised during the period.

- There were on average 4 bidders submitting bids during the period as compared to almost 5 bidders submitting bids during the previous period. The decline in the average number of bidders submitting bids suggest that the bidding environment is not as competitive from an owner's perspective. Note - as prime contractors win projects, reduce their bonding capacity and at the same time increase their backlog they tend to bid fewer projects.
- On average, the low bids on transportation related projects were approximately 3-percent less than the engineer's estimate; which was the same percentage reported in the previous quarter.
- When there were 4 bidders or less, the low bid on average was 3 to 8 percent higher than the engineer's estimate. When there were greater than 4 bidders, the low bid on average was 5 to 10% lower than the engineer's estimate.

The following economic statistics were reported by the Chief Economist from the Associated General Contractors (AGC) of America during the period:

- The Producer Price Index (PPI) for inputs to construction industries (which is a weighted average of the price of all goods used in every type of construction, plus items consumed by contractors such as diesel fuel) increased 8.1% over the September 2010 level.
- “Seasonally adjusted construction employment rose by 26,000 (0.5%) to 5,551,000, the highest [job] level since April 2010 but up only 37,000 [jobs] (0.7%) from a year ago.”
- “Among the five BLS [Bureau of Labor Statistics] construction employment categories, Heavy and civil engineering construction employment rose 0.7% and 1.2%.”
- “Architectural and engineering services employment, a harbinger of future demand for construction, rose 0.2% and 2.4%.”
- “Construction employment increased from September 2010 to September 2011 in 145 out of 337 metro areas for which the Bureau of Labor Statistics (BLS) reports the data, decreased in 153 and held steady in 39.” Colorado has seven designated (construction, mining and logging) areas, and 5 out of 7 reported a decline and only the Greeley and Pueblo areas reported a positive increase over a 12-month period (September 2010 to 2011).
- “Construction employment increased from September 2010 to September 2011 in 26 states, plus the District of Columbia, and decreased in 24, [the] AGC reported on October 21, based on BLS data.” The data reported that Colorado lost 5,000 jobs, which represents a 4.5% decline from September 2010, and Colorado currently stands 45<sup>th</sup> in the nation based upon a 12-month % change in construction employment.

Based upon the above noted mixed national economic indicators, there is evidence that the economy is improving (ever slightly) but there is volatility in the data. Colorado statewide and major metropolitan areas (e.g., Denver, Aurora, Colorado Springs, Fort Collins-Loveland-Broomfield) continue to be lagging other state and national economic indicators. Furthermore, increases in construction costs also appear to be off-setting cost savings realized in a competitive bidding environment.

Looking forward, the program will continue to explore opportunities to accelerate project / program completion and take advantage of the current competitive bidding environment (hopefully completing more work with less dollars and off-setting rising construction costs).

## Current List of Completed Bridges

Region	Original Bridge Number	County	Facility Carried over Featured Intersection	Work Completed
1	F-14-B	CLEAR CREEK	I 70 FRONTAGE RD over CLEAR CREEK (SR)	Replaced
1	G-22-J	LINCOLN	US 24 ML over DRAW	Replaced
2	L-21-U	CROWLEY	SH 96 ML over NUMA DRAIN CANAL	Replaced- minor structure
2	L-22-F	CROWLEY	SH 96 ML over BLACK DRAW	Replaced- minor structure
2	I-17-AE	EL PASO	US 24 ML EBND over FOUNTAIN CREEK	Repaired
2	I-18-G	EL PASO	US 24 ML over DRAW	Replaced
2	K-16-Q	FREMONT	SH 120 ML over HARDSCRABBLE CREEK	Replaced
2	N-17-N	HUERFANO	I 25 ML NBND over MISSOURI CREEK	Replaced
2	N-16-L	HUERFANO	SH 69 ML over TURKEY CREEK	Replaced
2	K-23-B	KIOWA	SH 96 ML over DRAW	Replaced
2	K-23-C	KIOWA	SH 96 ML over DRAW	Replaced
2	K-24-A	KIOWA	SH 96 ML over DRAW	Replaced
2	P-18-B	LAS ANIMAS	I 25 ML NBND over PURGATOIRE RIVER	Replaced
2	P-18-S	LAS ANIMAS	I 25 ML SBND over PURGATOIRE RIVER	Replaced
2	K-18-Z	PUEBLO	SH 96 ML over RDWY, RR, ARKANSAS RVR	Replaced
2	L-19-C	PUEBLO	US 50 BUS. RT WBND over ST CHARLES RIVER	Replaced
2	M-17-R	PUEBLO	I 25 ML over DRAW	Repaired
2	M-20-A	PUEBLO	SH 10 ML over SAUNDERS ARROYO	Replaced
2	H-16-K	TELLER	SH 67 ML over DRAW	Replaced
2	I-15-Y	TELLER	US 24 ML over TWIN CREEK	Repaired
3	J-09-G	GUNNISON	SH 114 ML over TOMICHI CREEK	Replaced
3	H-09-B	PITKIN	SH 82 ML over CO RD, CASTLE CREEK	Repaired
4	C-15-I	LARIMER	US 34 ML over BIG THOMPSON RIVER	Replaced
4	C-15-J	LARIMER	US 34 ML over BIG THOMPSON RIVER	Replaced
4	A-24-C A-26-F	LOGAN SEDGWICK	US 138 ML over DITCH/DRAW	Replaced- minor structure
5	O-05-AQ	LA PLATA	US 160 ML over ANIMAS RIVER	Repaired
5	M-06-K	SAN JUAN	US 550 ML over MINERAL CREEK	Replaced
6	E-17-AR	ADAMS	SH 7 ML over SOUTH PLATTE RIVER	Replaced
6	E-17-DM	ADAMS	I 76 ML WBND over UP RR	Replaced
6	E-17-DN	ADAMS	I 76 ML EBND over UP RR	Replaced

## Current List of Completed Bridges

Region	Original Bridge Number	County	Facility Carried over Featured Intersection	Work Completed
6	E-17-HG	ADAMS	104TH AVE over I 25 ML	Replaced
6	E-17-HL	ADAMS	I 76 ML EBND over SH 224 ML	Replaced
6	F-16-FY	ARAPAHOE	US 285 ML SBND over SH 88 ML	Replaced
6	F-16-FZ	ARAPAHOE	US 285 ML NBND over SH 88 ML	Replaced
6	F-16-BM	DENVER	SH 88 ML over RR, LAKEWOOD GULCH	Replaced
6	E-16-FX	JEFFERSON	WASHINGTON STREET over SH 58 ML	Replaced
6	E-16-HI	JEFFERSON	SH 58 ML over CO. RD,RR SPUR	Replaced
6	F-16-AM	JEFFERSON	US 285 ML SBND over SH 121 ML	Replaced
6	F-16-AY	JEFFERSON	US 285 ML NBND over SH 121 ML	Replaced
6	F-16-I	JEFFERSON	US 285 ML SBND over PIERCE STREET	Replaced

## List of FASTER Eligible Bridges

Region	Original Bridge Number	County	Facility Carried over Featured Intersection	Budget	Status	Construction Start Date	Construction Completion Date	Project Delivery Method
1	F-19-AF	ADAMS	COUNTY ROAD over I 70 ML	TBD	Not Programmed	TBD	TBD	TBD
6	E-17-EZ	ADAMS	84TH AVE over I 25 ML	\$ 11,950,000	In Construction	01/27/11	09/26/12	In Construction
6	E-17-GM	ADAMS	I 76 ML EBND over SOUTH PLATTE RIVER NE of JCT I 270	\$ 14,535,000	In Construction	09/12/11	05/28/12	D-B-B w/ A+B bid
6	E-17-GL	ADAMS	I 76 ML WBND over SOUTH PLATTE RIVER NE of JCT I 270	See E-17-GM	In Construction	09/12/11	05/28/12	D-B-B w/ A+B bid
6	E-16-GQ	ADAMS	SH 95 ML (SHERIDAN BLVD) over UP RR, RR SPUR N of JCT I 70 in WHEATRIDGE	\$ 7,400,000	Design Completed	01/05/12	06/30/13	D-B-B
6	E-16-FP	ADAMS	80TH AVE over US 36 ML	\$ 11,360,000	In Construction	05/06/10	10/20/11	In Construction
6	E-17-ER	ADAMS	SH 44 ML(104TH AVE) over BULL SEEP W of US 85	\$ 8,000,000	In Design	02/18/13	06/01/14	D-B-B with option to convert
6	E-17-CA	ADAMS	SH44 ML(104TH AVE) over SOUTH PLATTE RIVER W of JCT US 85	See E-17-ER	In Design	02/18/13	06/01/14	D-B-B with option to convert
6	E-17-EX	ADAMS	PEORIA STREET over I 76 ML NE of JCT US 85	\$ 5,928,000	in Design	08/06/12	06/05/13	D-B-B
6	E-17-DC	ADAMS	I 76 ML EBND over UP RR E of JCT US 85	\$ 11,750,000	in Design	02/04/13	04/07/14	D-B-B
6	E-17-DU	ADAMS	I 76 ML WBND over UP RR E of JCT US 85	See E-17-DC	in Design	02/04/13	04/07/14	D-B-B
6	E-17-HG	ADAMS	104TH AVE over I 25 ML	\$ 8,537,000	Construction Complete	05/21/09	12/20/10	Construction Complete
6	E-17-AR	ADAMS	SH 7 ML over SOUTH PLATTE RIVER	\$ 5,496,000	Construction Complete	05/19/09	01/07/11	Construction Complete
6	E-17-DM	ADAMS	I 76 ML WBND over UP RR	\$ 6,750,000	Construction Complete	--	--	Construction Complete
6	E-17-DN	ADAMS	I 76 ML EBND over UP RR	See E-17-DM	Construction Complete	--	--	Construction Complete
6	E-17-HL	ADAMS	I 76 ML EBND over SH 224 ML	See E-17-DM	Construction Complete	--	--	Construction Complete
6	E-17-EP	ADAMS	SH6 DITCH RIDER RD over BURLINGTON CANAL SR	\$ -	No Action Required	--	--	No Action Required
6	E-17-IC	ADAMS	YORK STREET over I 270 ML	TBD	Not Programmed	TBD	TBD	TBD
1	F-19-B	ARAPAHOE	US 36 ML over COMANCHE CREEK E of STRASBURG	\$ 2,696,000	In Design	09/01/12	12/31/12	D-B-B
6	F-17-F	ARAPAHOE	US 40 ML(E COLFAX) EBND over SAND CREEK E of I-225	\$ 18,737,000	In Design	03/01/13	10/31/14	D-B-B with option to convert
6	F-17-BS	ARAPAHOE	US 40 ML(E COLFAX) WBND over SAND CREEKE of I-225	See F-17-F	In Design	03/01/13	10/31/14	D-B-B with option to convert
6	F-16-F	ARAPAHOE	US 85(SANTA FE) ML NBND over DAD CLARK GULCH in LITTLETON	\$ 3,986,000	In Design	07/31/12	10/31/13	D/B
6	F-17-DM	ARAPAHOE	SH 88 ML/ARAP RD over CHERRY CREEK W OF SH 83(PARKER RD)	\$ 20,853,000	In Design	02/01/13	01/31/15	D-B-B with option to convert
6	F-17-GO	ARAPAHOE	US 40 ML(E COLFAX) EBND over TOLLGATE CREEK W of I-225	\$ 12,300,000	in Design	04/01/14	10/31/15	D-B-B
6	F-16-FY	ARAPAHOE	US 285 ML SBND over SH 88 ML	See F-16-AM	Construction Complete	08/31/10	07/31/11	Construction Complete
6	F-16-FZ	ARAPAHOE	US 285 ML NBND over SH 88 ML	See F-16-AM	Construction Complete	08/31/10	07/31/11	Construction Complete
2	O-26-L	BACA	US 160 ML over CAT CREEK W of SPRINGFIELD	\$ 5,730,000	In Design	02/20/12	11/01/12	Modified D/B
2	O-25-I	BACA	US 160 ML over DRAW W of PRITCHETT	See O-26-L	In Design	02/20/12	11/01/12	Modified D/B

## List of FASTER Eligible Bridges

Region	Original Bridge Number	County	Facility Carried over Featured Intersection	Budget	Status	Construction Start Date	Construction Completion Date	Project Delivery Method
2	O-25-H	BACA	US 160 ML over N FK SAND ARROYO SW of PRITCHETT	See O-26-L	In Design	02/20/12	11/01/12	Modified D/B
2	M-24-B	BENT	SH 101 ML over DRAW S of LAS ANIMAS and JCT US 50	\$ 7,381,000	In Design	02/03/12	09/06/12	Modified D/B
2	L-24-F	BENT	SH 101 ML over PURGATOIRE RIVER S of LAS ANIMAS	See M-24-B	In Design	02/03/12	09/06/12	Modified D/B
4	E-15-AA	BOULDER	SH 170 ML over COMMUNITY DITCH AR	\$ -	No Action Required	--	--	No Action Required
6	E-16-FL	BROOMFIELD	CNTY RD / OLD WADS over US 36 ML (DENVER/BOULDER TNPK) SE of JCT SH 121	\$ 12,399,000	in Design	05/21/12	09/30/13	D/B
6	E-16-FK	BROOMFIELD	SH 121 ML SBND- WADSWORTH PKWY over US 36 ML (DENVER/BOULDER TNPK)	\$ 28,407,000	in Design	05/21/12	09/30/13	D/B
1	F-14-B	CLEAR CREEK	I 70 FRONTAGE RD over CLEAR CREEK (SR) W IDAHO SPRINGS	\$ 1,924,000	Construction Complete	07/19/10	11/23/10	Construction Complete
1	F-14-Y	CLEAR CREEK	I 70(BUSINESS RT) over I 70 ML	TBD	Not Programmed	TBD	TBD	TBD
1	F-15-BL	CLEAR CREEK	I 70 ML WBND over US 6, CLEAR CREEK	TBD	Not Programmed	TBD	TBD	TBD
1	F-15-D	CLEAR CREEK	I 70 FRONTAGE RD over CLEAR CREEK (SR)	TBD	Not Programmed	TBD	TBD	TBD
2	L-22-F	CROWLEY	SH 96 ML over BLACK DRAW	See K-23-B	Construction Complete	07/28/10	09/21/11	Construction Complete
2	L-21-U	CROWLEY	SH 96 ML over NUMA DRAIN CANAL	\$ -	Construction Complete	--	--	Construction Complete
6	F-17-AE	DENVER	SH 30 ML/HAVANA ST over CHERRY CREEK	\$ 5,779,000	In Construction	01/13/11	06/15/12	In Construction
6	E-17-GE	DENVER	I 70 ML WBND over SAND CREEK E of QUEBEC ST	\$ 12,794,000	In Construction	07/29/11	07/31/12	D-B-B w/ A+B bid
6	E-17-BY	DENVER	I 70 ML EBND over SAND CREEK E of QUEBEC ST	See E-17-GE	In Construction	07/29/11	07/31/12	D-B-B w/ A+B bid
6	F-16-DP	DENVER	I 25 ML over RDWY,RR, SOUTH PLATTE RVR BRONCO BRIDGE	\$ 24,360,000	In Construction	05/02/11	07/11/13	In Construction
6	F-16-DT	DENVER	I 25 ML NBND over US 85 ML (SANTA FE)	\$ 17,922,000	In Construction	07/11/11	07/01/13	D-B-B
6	F-16-DW	DENVER	I 25 ML SBND over US 85 ML (SANTA FE)	w/ F-16-DT	In Construction	07/11/11	07/01/13	D-B-B
6	F-16-FW	DENVER	US 287+SH 88 (FEDERAL) over US 40 ML (COLFAX)	\$ 10,213,000	Design Completed	09/26/11	02/28/13	D/B
6	F-16-GG	DENVER	PERRY STREET over US 6 ML W of FEDERAL	\$ -	No Action Required	--	--	No Action Required
6	F-16-EJ	DENVER	US 6 ML over BNSF RR E SIDE OF I-25	\$ 10,800,000	In Design	09/02/12	03/01/14	D-B-B
6	E-16-FW	DENVER	PECOS STREET over I 70 ML in DENVER	\$ 22,335,000	In Design	06/02/12	10/15/13	CMGC
6	F-16-EF	DENVER	US 6 ML over SOUTH PLATTE RIVER W SIDE of I-25	\$ 70,000,000	In Design	12/01/12	12/01/14	D/B
6	F-16-EN	DENVER	US 6 ML over BRYANT STREET W SIDE OF I-25	See F-16-EF	In Design	12/01/12	12/01/14	D/B
6	E-17-AH	DENVER	ON 40TH AVE W of SH 2 ML over BNSF RR	\$ -	No Action Required	--	--	No Action Required
6	E-17-EW	DENVER	I 70 ML EBND over UP RR W of COLORADO BLVD	TBD	Not Programmed	TBD	TBD	TBD
6	F-16-BM	DENVER	SH 88 ML over RR, LAKEWOOD GULCH	\$ 6,000,000	Construction Complete	--	--	Construction Complete
6	E-17-FX	DENVER	I 70 ML over US 6, RR, CITY ST	TBD	Not Programmed	TBD	TBD	TBD



## List of FASTER Eligible Bridges

Region	Original Bridge Number	County	Facility Carried over Featured Intersection	Budget	Status	Construction Start Date	Construction Completion Date	Project Delivery Method
6	E-17-DF	DENVER	I 70 ML WBND over UP RR	TBD	Not Programmed	TBD	TBD	TBD
6	E-17-JP	DENVER	I 70 ML over HAVANA ST, UP RR	TBD	Not Programmed	TBD	TBD	TBD
6	F-16-OG	DENVER	RAMP to I 25 NBND overUS 6 ML	TBD	Not Programmed	TBD	TBD	TBD
1	G-16-B	DOUGLAS	US 85 ML over DRAW	TBD	Design Completed	TBD	TBD	Design Shelved
1	G-16-C	DOUGLAS	US 85 ML over DRAW	TBD	Design Completed	TBD	TBD	Design Shelved
1	G-17-A	DOUGLAS	US 85 ML over SAND CREEK	TBD	Not Programmed	TBD	TBD	TBD
3	F-09-H	EAGLE	US 6 ML over EAGLE RIVER E of EAGLE	\$ 5,305,000	In Construction	07/20/11	05/18/12	D-B-B
3	F-08-F	EAGLE	I 70 SERVICE RD over COLORADO RIVER (SR) N. of DOTSERO INT.	\$ 11,311,000	in Design	10/24/12	05/23/14	CMGC
3	F-11-AC	EAGLE	I 70 ML EBND over US 6, RR, EAGLE RIVER E of JCT SH 131	\$ 48,602,000	in Design	04/14/14	10/01/15	D-B-B with option to convert
3	F-11-AB	EAGLE	I 70 ML WBND over US 6, RR, EAGLE RIVER E of JCT US 24	See F-11-AC	in Design	04/14/14	10/01/15	D-B-B with option to convert
3	F-10-L	EAGLE	I 70 ML EBND overUS 6, RR, EAGLE RIVER	TBD	Not Programmed	TBD	TBD	TBD
2	H-18-A	EL PASO	US 24 ML over BLACK SQUIRREL CREEK W of PEYTON	\$ 3,950,000	Design Completed	11/15/11	12/02/12	D-B-B
2	I-17-AE	EL PASO	US 24 ML EBND over FOUNTAIN CREEK	See H-16-K	Construction Complete	08/04/10	10/21/10	Construction Complete
2	H-17-M	EL PASO	I 25 ML over DRAW	TBD	Not Programmed	TBD	TBD	CDOT Maintain/Repair
2	I-18-G	EL PASO	US 24 ML over DRAW E of FALCON	\$ -	Construction Complete	--	--	Construction Complete
2	J-18-S	EL PASO	I 25 ML NBND over DRAW S of FOUNTAIN	\$ 1,500,000	Design Completed	12/16/11	08/17/12	Streamlined D/B
2	J-18-T	EL PASO	I 25 ML NBND over DRAW S of FOUNTAIN	See J-18-S	Design Completed	12/16/11	08/17/12	Streamlined D/B
2	I-17-O	EL PASO	I 25 SERVICE RD over PINE CREEK S of JCT SH 56	TBD	Not Programmed	TBD	TBD	TBD
1	G-21-B	ELBERT	I 70 FRONTAGE RD over DRAW (SR)	\$ 4,065,000	In Design	06/08/13	10/24/13	D-B-B
1	G-21-Y	ELBERT	I 70 BUSINESS SPUR over I 70 ML	\$ -	No Action Required	--	--	No Action Required
2	K-16-K	FREMONT	SH 120 ML over RR, ARKANSAS RIVER E of PORTLAND	\$ 5,716,000	in Design	12/12/11	11/07/12	D-B-B
2	J-15-B	FREMONT	SH 9 ML over CURRANT CREEK NW of JCT US 50	\$ 2,629,000	In Construction	05/04/11	10/31/11	Modified D/B
2	K-16-S	FREMONT	SH 120 ML over DRAW, UP RR E of FLORENCE	\$ 5,200,000	In Design	03/15/13	04/15/14	D-B-B
2	K-16-Q	FREMONT	SH 120 ML over HARDSCRABBLE CREEK	\$ -	Construction Complete	--	--	Construction Complete
2	K-14-J	FREMONT	US 50 ML overDRAW	TBD	Not Programmed	TBD	TBD	TBD
3	F-07-A	GARFIELD	SH 82 ML over I70 ML, COLORADO RVR,RR GLENWOOD SPRINGS	\$ 59,020,000	in Design	02/17/15	11/20/17	CMGC
3	F-05-L	GARFIELD	I 70 ML WBND overCOLORADO RIVER	TBD	Not Programmed	TBD	TBD	TBD
3	J-09-C	GUNNISON	US 50 SERVICE RD over GUNNISON RVR OVERFLOW (SR) W. SIDE of GUNNISON	\$ 3,000,000	In Construction	08/29/11	09/30/12	D-B-B

## List of FASTER Eligible Bridges

Region	Original Bridge Number	County	Facility Carried over Featured Intersection	Budget	Status	Construction Start Date	Construction Completion Date	Project Delivery Method
3	J-09-D	GUNNISON	US 50 SERVICE RD over GUNNISON RVR (SR) W. SIDE of GUNNISON	see J-09-C	In Construction	08/29/11	09/30/12	D-B-B
3	J-09-G	GUNNISON	SH 114 ML over TOMICHI CREEK	\$ -	Construction Complete	--	--	Construction Complete
2	N-17-N	HUERFANO	I 25 ML NBND over MISSOURI CREEK	\$ 2,522,000	Construction Complete	01/27/11	09/01/11	Construction Complete
2	O-16-A	HUERFANO	SH 12 ML over CUCHARAS RIVER S of LA VETA	See P-17-H	In Design	02/28/12	10/15/12	Modified D/B
2	N-16-L	HUERFANO	SH 69 ML over TURKEY CREEK	\$ 2,475,000	Construction Complete	04/27/10	07/15/11	Construction Complete
2	N-17-AD	HUERFANO	I 25 ML SBND over US 160 ML, RR SPUR	TBD	Not Programmed	TBD	TBD	TBD
2	M-16-P	HUERFANO	SH 69 ML over MILLIKEN ARROYO	TBD	Not Programmed	TBD	TBD	TBD
2	N-17-C	HUERFANO	I 25 BUS RT over SULL CREEK	TBD	Not Programmed	TBD	TBD	TBD
6	F-16-CS	JEFFERSON	SH121 ML-WADSWORTH over BEAR CREEK N OF 285	\$ 11,404,000	in Design	02/27/12	05/23/13	D-B-B
6	F-16-FL	JEFFERSON	US 6 ML over SH 95 ML/SHERIDAN AVE.	\$ 11,952,000	in Design	12/27/11	06/06/13	D-B-B
6	F-16-AM	JEFFERSON	US 285 ML SBND over SH 121 ML	\$ 47,396,000	Construction Complete	08/31/10	07/31/11	Construction Complete
6	F-16-AY	JEFFERSON	US 285 ML NBND over SH 121 ML	See F-16-AM	Construction Complete	08/31/10	07/31/11	Construction Complete
6	F-16-I	JEFFERSON	US 285 ML SBND over PIERCE STREET	See F-16-AM	Construction Complete	08/31/10	07/31/11	Construction Complete
6	E-16-FX	JEFFERSON	WASHINGTON STREET over SH 58 ML	\$ 6,098,000	Construction Complete	02/20/08	11/02/09	Construction Complete
6	E-16-HI	JEFFERSON	SH 58 ML over CO.RD,RR SPUR	\$ -	Construction Complete	--	--	Construction Complete
2	K-23-B	KIOWA	SH 96 ML over DRAW	\$ 3,591,000	Construction Complete	07/28/10	09/21/11	Construction Complete
2	K-23-C	KIOWA	SH 96 ML over DRAW	See K-23-B	Construction Complete	07/28/10	09/21/11	Construction Complete
2	K-24-A	KIOWA	SH 96 ML over DRAW	See K-23-B	Construction Complete	07/28/10	09/21/11	Construction Complete
5	O-05-AQ	LA PLATA	US 160 ML over ANIMAS RIVER	\$ 807,000	Construction Complete	07/26/10	11/23/10	Construction Complete
3	G-11-F	LAKE	US 24 ML over UP RR	\$ 6,892,000	In Construction	12/30/10	12/15/11	In Construction
4	B-16-AE	LARIMER	US 287 ML over DRAWN of JCT SH 1	\$ 4,322,000	In Construction	07/25/11	03/31/12	D-B-B
4	B-16-D	LARIMER	SH 14 ML over CACHE LA POUFRE RIVER E of JCT US 287	\$ 13,282,000	In Design	06/01/13	05/31/14	D-B-B with option to convert
4	C-15-I	LARIMER	US 34 ML over BIG THOMPSON RIVER	\$ 5,363,000	Construction Complete	08/17/09	06/30/10	Construction Complete
4	C-15-J	LARIMER	US 34 ML over BIG THOMPSON RIVER	See C-15-I	Construction Complete	08/17/09	06/30/10	Construction Complete
4	C-17-EL	LARIMER	I 25 ML over DRAW	\$ -	No Action Required	--	--	No Action Required
4	B-16-EU	LARIMER	COUNTY ROAD 48 over I 25 ML	TBD	Not Programmed	TBD	TBD	TBD
2	P-17-H	LAS ANIMAS	SH 12 ML over PURGATOIRE RIVER NW of WESTON	\$ 4,040,000	In Design	02/28/12	10/15/12	Modified D/B

## List of FASTER Eligible Bridges

Region	Original Bridge Number	County	Facility Carried over Featured Intersection	Budget	Status	Construction Start Date	Construction Completion Date	Project Delivery Method
2	O-19-H	LAS ANIMAS	US 350 ML over PURGATOIRE RIVER NE of JCT US 160	\$ 5,350,000	In Design	03/15/13	11/15/13	D-B-B
2	P-18-B	LAS ANIMAS	I 25 ML NBND over PURGATOIRE RIVER	\$ -	Construction Complete	--	--	Construction Complete
2	P-18-S	LAS ANIMAS	I 25 ML SBND over PURGATOIRE RIVER	\$ -	Construction Complete	--	--	Construction Complete
2	O-19-J	LAS ANIMAS	US 350 ML over DRAW S of MODEL	\$ 2,700,000	In Design	12/15/12	07/01/13	D-B-B
2	P-19-AD	LAS ANIMAS	SH 239(CO RD 75) ML over IRRIGATION CANAL in TRINIDAD	See O-19-J	In Design	12/15/12	07/01/13	D-B-B
2	P-23-A_MINOR	LAS ANIMAS	US 160 ML over SMITH CANYON	TBD	Not Programmed	TBD	TBD	TBD
1	G-22-J	LINCOLN	US 24 ML over DRAW E of LIMON	\$ 1,215,000	Construction Complete	05/02/11	08/24/11	Construction Complete
4	A-24-C A-26-F	LOGAN SEDGWICK	US 138 ML over DITCH/DRAW	\$ 870,000	Construction Complete	07/12/10	12/15/10	Construction Complete
3	G-03-Q	MESA	I 70 ML WBND over COLORADO RIVER OVERFLOW	TBD	Not Programmed	TBD	TBD	TBD
2	L-22-O	OTERO	SH 266 ML over HOLBROOK CANAL NE of ROCKY FORD	\$ 6,563,000	In Design	05/01/12	10/07/12	CMGC
2	L-22-E	OTERO	SH 266 ML over FT LYON STORAGE CANAL NE of ROCKY FORD	See L-22-O	In Design	05/01/12	10/07/12	CMGC
2	L-22-K	OTERO	SH 71 ML over FT LYON CANAL NW of ROCKY FORD	See L-22-O	In Design	05/01/12	10/07/12	CMGC
2	M-21-D	OTERO	US 350 ML over DRAW SW of LA JUNTA & TIMPAS	\$ 2,619,000	Design Completed	10/06/11	04/16/12	D-B-B
5	L-05-B	OURAY	SH 62 ML over UNCOMPAGRE RIVER SHERMAN ST in RIDGWAY	\$ 7,859,000	In Design	07/16/12	11/12/13	D-B-B
5	L-06-A	OURAY	US 550 ML over BEAR CREEK	\$ 5,851,000	In Construction	08/01/10	11/01/11	In Construction
1	G-12-L	PARK	SH 9 ML over BUCKSKIN GULCH in ALMA	\$ 436,000	Design Completed	10/1/11	11/3/11	D-B-B
3	H-09-B	PITKIN	SH 82 ML over CO RD, CASTLE CREEK	\$ 982,000	Construction Complete	01/27/11	07/21/11	Construction Complete
2	L-28-F	PROWERS	SH 89 ML over ARKANSAS RIVER S of HOLLY	\$ 6,930,000	In Construction	02/16/11	12/01/11	D-B-B
2	L-27-S	PROWERS	US 50 ML over DRAW E of LAMAR	See L-28-C	In Design	03/01/13	02/28/14	D-B-B
2	L-28-C	PROWERS	US 50 ML over BNSF RR E of GRANADA	\$ 5,950,000	In Design	03/01/13	02/28/14	D-B-B
2	K-18-AX	PUEBLO	I 25 ML NBND over US 50 ML	TBD	Not Programmed	TBD	TBD	TBD
2	K-18-CK	PUEBLO	I 25 ML NBND over NP RR, ILEX ST, BENNET ST N of JCT SH 50 E	See K-18-CL	In Design	06/02/13	05/15/15	D/B
2	K-18-CL	PUEBLO	I 25 ML SBND over NP RR, ILEX ST, BENNET ST S of JCT SH 96	\$ 39,890,000	In Design	06/02/13	05/15/15	D/B
2	K-18-R	PUEBLO	US 50 BUS EBND over ARKANSAS RIVER	TBD	Not Programmed	TBD	TBD	TBD
2	K-18-Z	PUEBLO	SH 96 ML over RDWY, RR, ARKANSAS RVR	\$ 44,123,000	Construction Complete	11/07/07	04/01/11	Construction Complete
2	L-18-AQ	PUEBLO	NORTHERN AVE over I 25 ML	TBD	Not Programmed	TBD	TBD	TBD
2	L-18-M	PUEBLO	I 25 ML NBND over INDIANA AVE	TBD	Not Programmed	TBD	TBD	TBD
2	L-18-W	PUEBLO	I 25 ML SBND over INDIANA AVE	TBD	Not Programmed	TBD	TBD	TBD

## List of FASTER Eligible Bridges

Region	Original Bridge Number	County	Facility Carried over Featured Intersection	Budget	Status	Construction Start Date	Construction Completion Date	Project Delivery Method
2	L-19-C	PUEBLO	US 50 BUS. RT WBND over ST CHARLES RIVER	\$ 2,957,000	Construction Complete	10/16/09	07/22/10	Construction Complete
2	M-17-R	PUEBLO	I 25 ML over DRAW	\$ -	Construction Complete	--	--	Construction Complete
2	M-20-A	PUEBLO	SH 10 ML over SAUNDERS ARROYO	\$ -	Construction Complete	--	--	Construction Complete
3	C-09-C	ROUTT	US 40 ML over E FORK ELK RIVER W of STEAMBOAT SPGS	\$ 10,501,000	in Design	01/28/14	07/29/15	CMGC
5	M-06-K	SAN JUAN	US 550 ML over MINERAL CREEK	\$ 3,652,000	Construction Complete	08/17/09	06/01/11	Construction Complete
5	L-04-B	SAN MIGUEL	SH 145 ML over LEOPARD CREEK JCT SH 62 - PLACERVILLE	\$ 4,059,000	In Design	05/16/12	09/12/13	D-B-B
2	H-16-K	TELLER	SH 67 ML over DRAW	\$ 2,617,000	Construction Complete	08/04/10	12/31/10	Construction Complete
2	I-15-Y	TELLER	US 24 ML over TWIN CREEK	See H-16-K	Construction Complete	08/04/10	10/21/10	Construction Complete
4	C-17-BN	WELD	I 25 SERVICE RD over LITTLE THOMPSON RIVER S of JCT SH 56	\$ 3,400,000	In Design	09/03/12	02/28/13	D-B-B
4	D-17-AK	WELD	SH 66 ML over ST VRAIN RIVER W of PLATTEVILLE	\$ 4,600,000	in Design	09/24/12	08/15/13	D-B-B
4	C-18-BK	WELD	US 85 BYPASS SBND over US 85 BUSS RT	TBD	Not Programmed	TBD	TBD	TBD
4	D-19-A	WELD	I 76 SERVICE RD over LOST CREEK SR	TBD	Not Programmed	TBD	TBD	TBD
4	B-17-L	WELD	SH 14 ML over COALBANK CREEK W of AULT	\$ 4,441,000	in Design	09/01/12	01/11/13	D-B-B
4	B-17-C	WELD	US 85 ML over UPRR	\$ 7,597,000	in Design	02/02/13	09/12/13	D-B-B
4	D-28-B	YUMA	US 34 ML over N FK REPUBLICAN RIVER W of LAIRD	\$ 3,451,000	In Design	07/21/12	11/30/12	D-B-B

# Colorado State Map of FASTER Eligible Bridges

