



# MONTHLY PROGRESS REPORT

AUGUST 2009





TABLE OF CONTENTS

	<u>PAGE</u>
Introduction	1
<b>1.0</b> Volumes and Lane Usage	1
<b>2.0</b> Bus Travel Times	6
<b>3.0</b> Revenues and Expenditures	6
<b>4.0</b> Incidents	9
<b>5.0</b> Enforcement	9
<b>6.0</b> Operational Issues	10

TABLES

August 2009 Traffic Data Summary	1
Peak Period Traffic Data (AM – Inbound)	4
Peak Period Traffic Data (PM – Outbound)	5
AM and PM Peak Hour Traffic	5
15 Minute Counts at 19 <sup>th</sup> Street	6
FY 10 General Administrative Expenditures – August 2009	8
FY 10 I-25 HOV/Express Lanes Expenditures – August 2009	9
Colorado State Patrol Manual Citations	9

FIGURES

August 2009 Daily Traffic Volumes	2
Monthly Traffic Volumes	2
FY 09/10 Traffic Comparisons	3
FY 2010 Monthly Estimated Toll Revenue vs. Actual	7
FY 09/10 Revenue Comparisons	7



## INTRODUCTION

This report contains information regarding traffic volumes and lane usage, bus travel times, revenues and expenditures, law enforcement activities, and incidents which may have impacted operations or revenues during the month of August 2009.

### 1.0 VOLUMES AND LANE USAGE

During August 2009, recorded use of the I-25 HOV/Express Lanes (including both HOV and toll-paying vehicles), decreased to 316,353. This represents a 1.98% decrease from 322,751 in July and a 1.38% increase from 312,050 in June.

The highest traffic volume recorded since opening was in October 2007, at 355,308.

The August summary of traffic data for both Tolled Express and HOV lanes follows. Data includes weekend and non-peak traffic.

Due to implementation of License Plate Tolling (LPT), the Traffic Data Summary table now displays Express Tolling, Violations, and LPT in separate columns. License plate tolls are presumed to be customers until such time that a bill is not paid. After a period of time, unpaid toll bills move to the violation process.

August 2009 Traffic Data Summary					
	Express	HOV	Violations	LPT	Total
<b>Total Monthly Traffic</b>	82,280	220,656	565	12,852	<b>316,353</b>
<b>Maximum Daily Traffic</b>	4,630	9,212	37	1,775	<b>14,015</b>
<b>Average Daily Traffic</b>	3,748	7,645	25	545	<b>11,963</b>
<b>Avg Weekday AM Peak Hour</b>	453	609	3	55	<b>1,121</b>
<b>Avg Weekday PM Peak Hour</b>	368	792	2	56	<b>1,219</b>
<b>Avg Weekday AM Peak Period</b>	1,810	2,438	13	221	<b>4,482</b>
<b>Avg Weekday PM Peak Period</b>	1,472	3,169	8	226	<b>4,875</b>

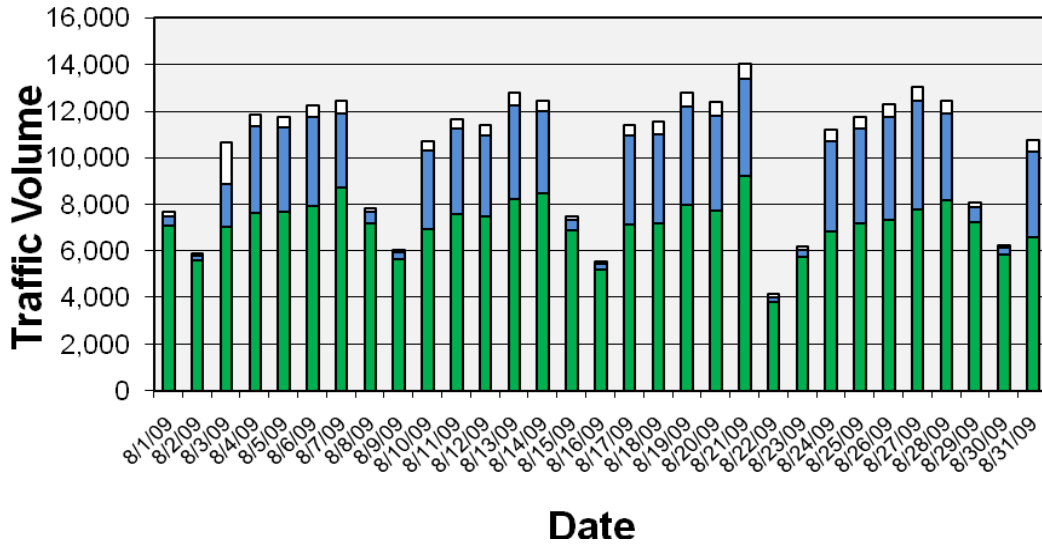
\* 6:00 AM – 10:00 AM

\*\* 3:00 PM – 7:00 PM

Daily and monthly traffic volumes are illustrated in the following figures. LPT and violation counts have been combined into a third tier for the Daily Traffic Volumes table.

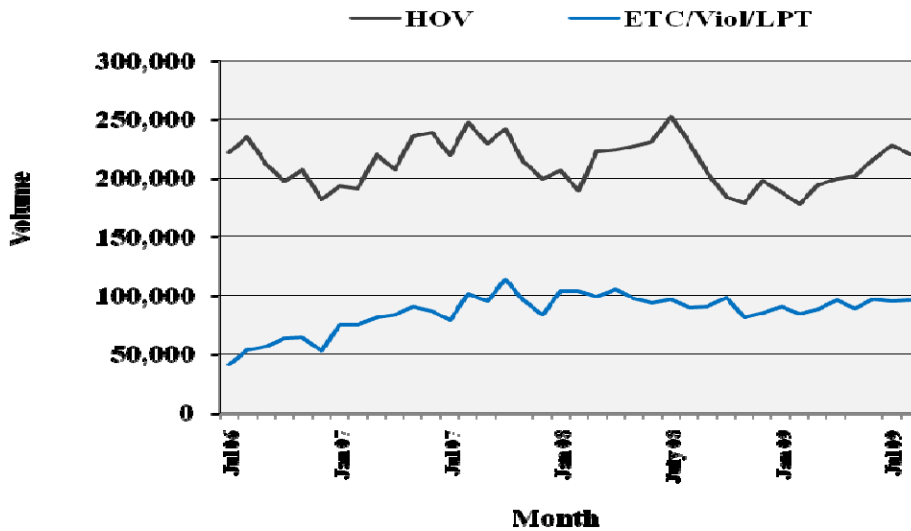
**AUGUST 2009 DAILY TRAFFIC VOLUMES**

□ LPT/VIOL   ■ ETL   ■ HOV



The Monthly Traffic Volumes chart below shows the ETL, Violations, and LPT combined.

**MONTHLY TRAFFIC VOLUMES**

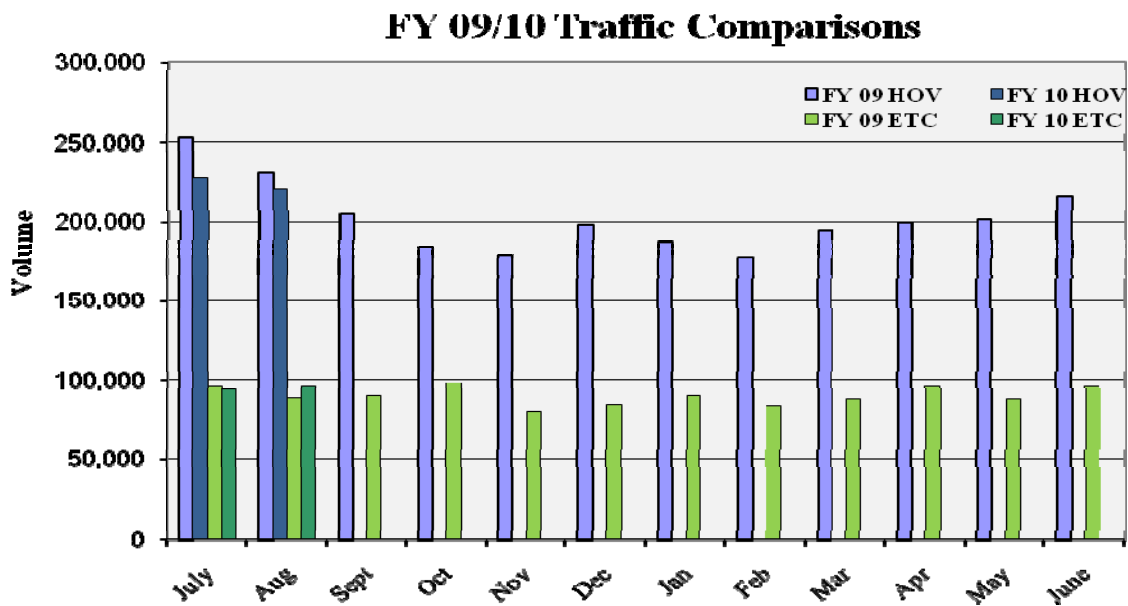




HOV lane usage during August decreased to 220,656; down from 227,868 in July. This amount is down from 230,476 in August 2008 and represents a decrease of 9,820, or 4.26% since one year ago.

Toll lane usage during August increased to 95,697; up from 94,883 in July. August's toll lane usage amount includes ETL, LPT, and violations. This amount is up from 89,249 in August 2008 and represents an increase of 6,448, or 7.22% since one year ago.

Current fiscal year traffic volumes compared to the previous fiscal year's volumes are represented in the following figure.





MONTHLY PROGRESS REPORT – August 2009

Detailed data for peak period traffic volumes are found in the following tables.

<b>Morning Rush Period</b>										
<b>Weekday</b>	<b>Total Peak Period</b>					<b>Avg Per Hour</b>				
	<b>Express</b>	<b>HOV</b>	<b>Violation</b>	<b>LPT</b>	<b>Total</b>	<b>Express</b>	<b>HOV</b>	<b>Violation</b>	<b>LPT</b>	<b>Total</b>
<b>Monday</b>	317	2330	4	1509	4160	79	582	1	377	1040
<b>Tuesday</b>	1839	2444	14	155	4452	460	611	4	39	1113
<b>Wednesday</b>	1773	2482	12	137	4404	443	620	3	34	1101
<b>Thursday</b>	1872	2469	11	143	4495	468	617	3	36	1124
<b>Friday</b>	1410	2239	7	123	3779	352	560	2	31	945
<b>Monday</b>	1758	2238	11	137	4144	440	560	3	34	1036
<b>Tuesday</b>	1813	2450	13	142	4418	453	612	3	36	1104
<b>Wednesday</b>	1647	2207	9	128	3991	412	552	2	32	998
<b>Thursday</b>	1862	2492	14	148	4516	466	623	4	37	1129
<b>Friday</b>	1676	2304	14	126	4120	419	576	4	32	1030
<b>Monday</b>	1836	2382	12	141	4371	459	596	3	35	1093
<b>Tuesday</b>	1949	2504	14	164	4631	487	626	4	41	1158
<b>Wednesday</b>	1957	2571	18	147	4693	489	643	4	37	1173
<b>Thursday</b>	2073	2579	14	178	4844	518	645	4	44	1211
<b>Friday</b>	1801	2384	16	166	4367	450	596	4	42	1092
<b>Monday</b>	2057	2495	21	189	4762	514	624	5	47	1190
<b>Tuesday</b>	2125	2558	12	178	4873	531	640	3	44	1218
<b>Wednesday</b>	2283	2580	19	183	5065	571	645	5	46	1266
<b>Thursday</b>	2104	2578	19	179	4880	526	644	5	45	1220
<b>Friday</b>	1859	2412	10	168	4449	465	603	2	42	1112
<b>Monday</b>	2002	2498	15	196	4711	500	624	4	49	1178



**MONTHLY PROGRESS REPORT – August 2009**

<b>Afternoon Rush Period</b>										
<b>Weekday</b>	<b>Total Peak Period</b>					<b>Avg Per Hour</b>				
	<b>Express</b>	<b>HOV</b>	<b>Violation</b>	<b>LPT</b>	<b>Total</b>	<b>Express</b>	<b>HOV</b>	<b>Violation</b>	<b>LPT</b>	<b>Total</b>
<b>Monday</b>	1231	3002	5	155	4393	308	750	1	39	1098
<b>Tuesday</b>	1475	3251	5	221	4952	369	813	1	55	1238
<b>Wednesday</b>	1407	3245	8	212	4872	352	811	2	53	1218
<b>Thursday</b>	1546	3239	6	250	5041	386	810	2	62	1260
<b>Friday</b>	1248	3449	5	242	4944	312	862	1	60	1236
<b>Monday</b>	1286	2902	6	189	4383	322	726	2	47	1096
<b>Tuesday</b>	1413	3137	9	199	4758	353	784	2	50	1190
<b>Wednesday</b>	1451	3252	6	212	4921	363	813	2	53	1230
<b>Thursday</b>	1664	3673	8	252	5597	416	918	2	63	1399
<b>Friday</b>	1357	3601	9	209	5176	339	900	2	52	1294
<b>Monday</b>	1546	3137	12	217	4912	386	784	3	54	1228
<b>Tuesday</b>	1419	2977	5	227	4628	355	744	1	57	1157
<b>Wednesday</b>	1709	3330	5	279	5323	427	832	1	70	1331
<b>Thursday</b>	1508	3034	10	279	4831	377	758	2	70	1208
<b>Friday</b>	1556	3425	17	269	5267	389	856	4	67	1317
<b>Monday</b>	1418	2708	9	206	4341	354	677	2	52	1085
<b>Tuesday</b>	1411	2663	5	194	4273	353	666	1	48	1068
<b>Wednesday</b>	1617	2912	12	216	4757	404	728	3	54	1189
<b>Thursday</b>	1960	3454	11	293	5718	490	864	3	73	1430
<b>Friday</b>	1353	3316	9	228	4906	338	829	2	57	1226
<b>Monday</b>	1331	2843	11	197	4382	333	711	3	49	1096

The following table represents monthly averages of peak hour traffic during FY 2010.

	<b>AM ETL 7:00-8:00</b>	<b>AM HOV 7:00-8:00</b>	<b>PM HOV 5:00-6:00</b>	<b>PM ETL 5:00-6:00</b>	<b>AM Total 7:00-8:00</b>	<b>PM Total 5:00-6:00</b>	<b>Capacity</b>
<b>Jul 09</b>	711	899	993	598	1,610	1,521	3,000
<b>Aug 09</b>	799	927	1,008	626	1,726	1,635	3,000

Fifteen minute counts at the 19<sup>th</sup> Street exit have been collected since April 2008. Counts are conducted manually only during the first full week of each month, providing a representative sample.

November 2008 recorded the highest counts at 19<sup>th</sup> Street, with an average of 1,400 vehicles during the rush hour. The August 2009 recorded averages totaled 1,203. The peak 15-minute period during rush hour is from 7:45 to 8:00. Counts at 19<sup>th</sup> street were about the same as they were in summer a year ago.



A table containing 15-minute counts at 19<sup>th</sup> Street follows:

15-MINUTE COUNTS AT 19 <sup>TH</sup> STREET						
	Monday 3-Aug	Tuesday 4-Aug	Wednesday 5-Aug	Thursday 6-Aug	Friday 7-Aug	Average
7:00 - 7:15	132	168	141	151	136	146
7:15 - 7:30	196	206	203	203	194	200
7:30 - 7:45	217	247	231	256	269	244
7:45 - 8:00	247	254	278	261	248	258
8:00 - 8:15	203	194	184	196	157	187
8:15 - 8:30	161	181	176	191	131	168

## 2.0 BUS TRAVEL TIMES

The IGA between CDOT and RTD prescribes triggers to determine if there is any degradation to travel times for buses and carpools. These triggers are:

- Exceeding travel time for more than one bus in an hour (provided the excess is not attributable to a stall, crash and closure of the lane, or special event).
- Exceeding the travel time for more than one day per week for three weeks in a row.
- Predictable patterns.

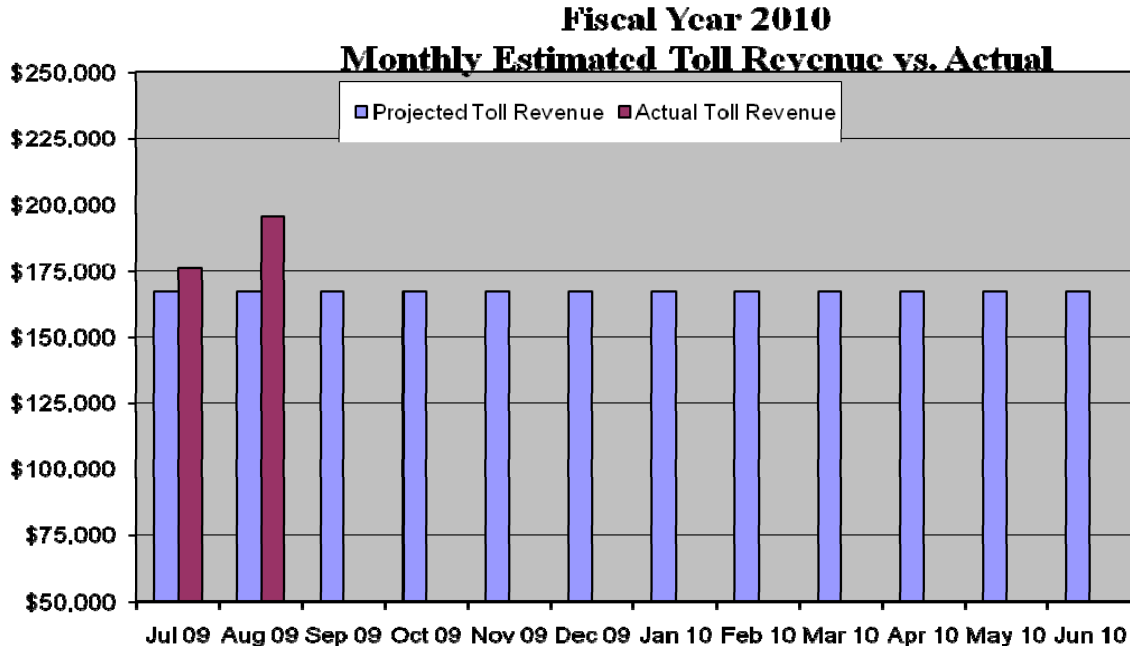
During August, one bus exceeded the allotted travel time. This bus came through at 9:41, well outside of the rush hour. In addition, nine buses were between the 7 minute 45 second travel time and 8 minute and 45 second travel time.

## 3.0 REVENUES AND EXPENDITURES

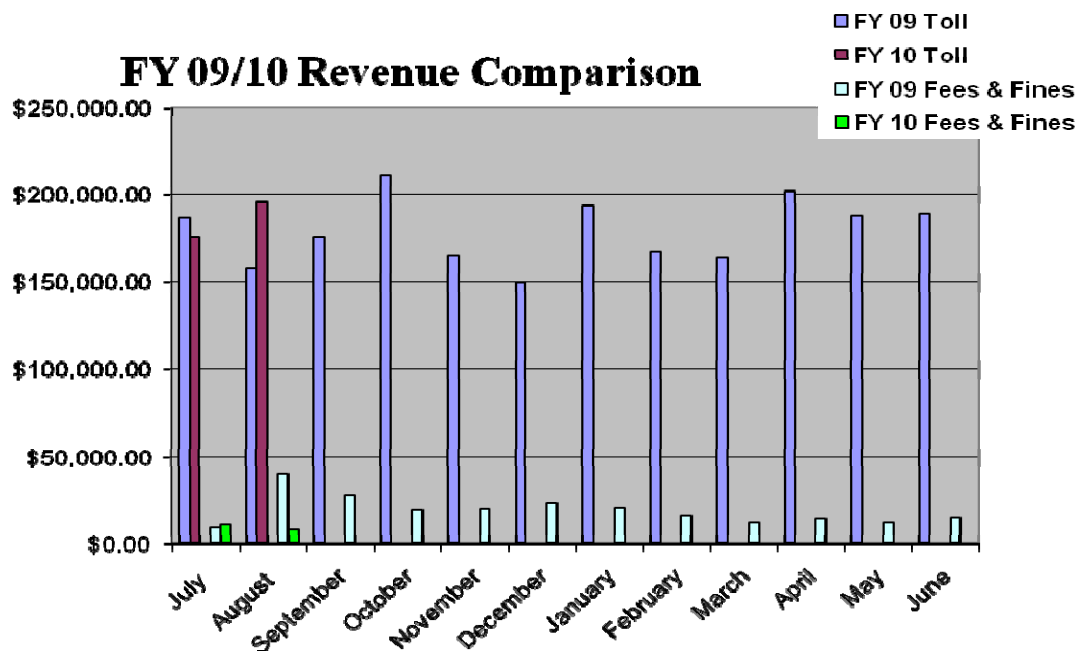
August toll revenues increased to \$195,228.25; up from \$175,778.90 in July. The total of all revenues, including tolls, fees, and fines, was \$204,118. Fees and fines collected this month decreased to \$8,889.75; down from \$11,604.74 in July. The amount of fees and fines collected in August represents 4.35% of August's total revenues. (Reminder: Some revenues that were posted may have been transactions, fees, and fines reconciled from previous months' transactions.)



The following figure shows the projected vs. actual toll revenue to date for Fiscal Year 2010.



Current fiscal year revenues compared to the previous fiscal year's revenues are illustrated in the following figure.





MONTHLY PROGRESS REPORT – August 2009

The following table illustrates general administrative expenditures through August 2009.

Due to the September 8<sup>th</sup> furlough, the August business close was moved to September 18<sup>th</sup>. Therefore, the final numbers for the August report may change slightly.

ITEM	Estimated Revenues	Estimated Expenditures	Current Month Actual	Year-to-Date Actual	Remaining
<b>Administrative Budget</b>					
<b>Revenues</b>					
Interest Earnings from	\$ 216,000		\$ 3,756	\$ 7,479	\$ 208,521
Carry Forward Balance from Prior Fiscal Year	\$ 1,891,651		\$ -	\$ 1,891,651	
<b>Total Revenues</b>	<b>\$ 2,107,651</b>		<b>\$ 3,756</b>	<b>\$ 1,899,130</b>	<b>\$ 208,521</b>
<b>Expenditures</b>					
General Engineering Consultant		\$ 100,000	\$ -	\$ -	\$ 100,000
Traffic and Revenue Consultant		\$ 100,000	\$ -	\$ -	\$ 100,000
Financial Advisor		\$ 82,560	\$ -	\$ -	\$ 82,560
Marketing/Research, Outreach		\$ 40,000	\$ -	\$ -	\$ 40,000
IBTTA Dues & Conference Registration (75% of \$4,000)		\$ 3,000	\$ -	\$ -	\$ 3,000
Travel, Meals, Board Expenses		\$ 3,000	\$ 3	\$ 3	\$ 2,997
CDOT Staff Costs		\$ 87,284	\$ 4,883	\$ 10,185	\$ 77,099
<b>Total Expenditures</b>		<b>\$ 415,844</b>	<b>\$ 4,886</b>	<b>\$ 10,188</b>	<b>\$ 405,656</b>



MONTHLY PROGRESS REPORT – August 2009

The next table illustrates expenses specific only to the I-25/HOV Express Lanes.

ITEM	Estimated Revenues	Estimated Expenditures	Current Month Actual	Year-to-Date Actual	Remaining
<b>I -25 Express Lanes</b>					
<b><u>Revenues</u></b>					
Estimated Toll Revenues	\$ 2,000,000		\$ 195,228	\$ 374,326	\$ 1,625,675
Estimated Misc. Revenues	\$ 100,000		\$ 8,890	\$ 20,634	\$ 79,366
Interest Earnings	\$ 86,500		\$ 6,964	\$ 13,201	
Loan from Transportation Commission	\$ -		\$ -	\$ -	\$ -
Carry Forward Balance from Prior Fiscal Year	\$ 3,251,834		\$ -	\$ 3,251,834	
<b>Total Revenues</b>	<b>\$ 5,438,334</b>		<b>\$ 211,082</b>	<b>\$ 408,161</b>	<b>\$ 5,030,173</b>
<b><u>Expenditures</u></b>					
Snow Plow Operations (T-P Enterprises)		\$ 455,575	\$ -	\$ 21,730	\$ 433,845
Colorado State Patrol		\$ 75,000	\$ -	\$ 5,975	\$ 69,025
E-470 Oversight, Management, & Operations		\$ 430,000	\$ 36,424	\$ 36,424	\$ 393,576
E-470 Maintenance Tech.		\$ 83,166	\$ 8,977	\$ 8,977	\$ 74,189
Non-revenue transponders		\$ 5,000	\$ -	\$ -	\$ 5,000
IBTTA Dues (25% of \$4,000)		\$ 1,000	\$ -	\$ -	\$ -
Marketing/ Outreach		\$ 10,300	\$ -	\$ -	\$ 10,300
User Survey		\$ -	\$ -	\$ -	\$ -
CDOT Staff Costs		\$ 68,731	\$ 2,156	\$ 5,040	\$ 63,691
TC Loan Repayment		\$ 301,822	\$ -	\$ -	\$ 301,822
Contingency for Major Improvements		\$ 400,000	\$ -	\$ -	\$ 400,000
Board Contingency		\$ 250,000	\$ -	\$ -	\$ 250,000
Equipment Replacement Plan				\$ -	\$ -
1. Gates		\$ 105,000	\$ -	\$ -	\$ 105,000
2. Variable Message Sign Upgrades		\$ 1,485	\$ -	\$ -	\$ 1,485
3. Cameras		\$ 8,994	\$ -	\$ -	\$ 8,994
Region 6 Maintenance Costs		\$ 129,867	\$ 5,631	\$ 5,631	\$ 124,236
Courtesy Patrol		\$ 120,000	\$ 9,862	\$ 9,862	\$ 110,139
<b>Total Expenditures</b>		<b>\$ 2,445,940</b>	<b>\$ 63,049</b>	<b>\$ 93,639</b>	<b>\$ 2,352,301</b>

**4.0 INCIDENTS**

During the month of August, no major incidents occurred.

**5.0 ENFORCEMENT**

Law enforcement activities during FY 2010 are shown in the table below.

COLORADO STATE PATROL MANUAL CITATIONS							
	Total	Toll	HOV	Hazardous	Seatbelt	Other	
<b>Jul 09</b>	103	11	9	22	3	24	0 felony, 0 misd.
<b>Aug 09</b>	122	22	22	24	7	32	0 felony, 0 misd.



## **6.0 OPERATIONAL ISSUES**

During the month of August, no operational issues occurred.