

**COLORADO DEPARTMENT OF TRANSPORTATION
AERONAUTICS DIVISION
ANNUAL REPORT
2006**

Prepared October 2006
www.colorado-aeronautics.org

AIRPORT CAPITAL IMPROVEMENT PROGRAM

A comprehensive program of capital improvement planning by the CDOT-Aeronautics Division addresses improvement and expansion of the State's system of airports. Working through a grant of **\$246,140.00** from the Federal Aviation Administration, the Division guides airports in identifying short-and long-term needs and structuring available funding.

General aviation airports received a total of **\$14,250,818.00** in capital construction grants and commercial service airports **\$65,610,637.00** in 2006.



In 2006, **FAA General Aviation** **titlement funds totaling**

0.00 went to non-commer-
s for planning,
l acquisition
movement
os,

Spanish Peaks Airfield near
Walsenburg and **Walden-Jackson**
County Airport in northwestern
participated in state,
-funded runway
side im-

Significant projects continue at **Aspen-Pitkin County Airport** to improve runway safety areas; a multi-year project to construct a new terminal and expand ramp areas is underway at **Yampa Valley Regional Airport** at Hayden; runway and taxiway extensions at **Eagle County Regional Airport** greatly improve its ability to manage larger aircraft; runway reconstruction at the **Colorado Springs Municipal Airport** replaces critical pavements. **Stevens Field** in Pagosa Springs opened its newly-reconstructed runway in summer 2006.

The **Burlington-Kit Carson County Airport** continues the reconstruction of its runway; **Jefferson County Airport** in metro Denver is midway into multi-year relocation of a principal taxiway and ramp reconstruction while **Walker Field** in Grand Junction continues to upgrade, expand and develop its airside and customer facilities.

Air traffic control tower operations began at **Front Range Airport** in August 2005.



PAVEMENT CONDITION INDEXING

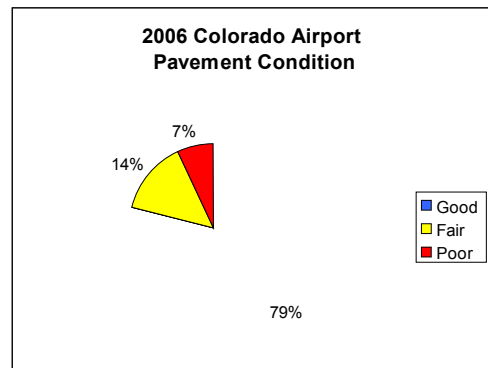
Each year, the Division undertakes the analysis of existing airport surfaces and ranks them for durability, safety, life-cycle and recommended maintenance. By so doing, the long term needs can be identified and available funding budgeted to do the most good. The goal was set in the 2000 Statewide Airport Inventory and Implementation Plan*, to maintain all airport pavements at an average of 75 PCI or above. Good pavements are rated above 65; Fair pavements between 55 and 65 and Poor pavements, requiring likely reconstruction, are below 54.

Pavement Condition Indexing reports show the impact being made by the Crack Fill Rebate Program which provides 75% rebate to airports on the purchase of crack sealant materials. In 2006, more than \$50,000.00 was reimbursed to 17 airports that took advantage of the program.

93% of the pavements on Colorado airports are in the Good or Fair category. Timely and routine maintenance of existing surfaces will insure the state's ability to maintain the 75 or greater PCI.

Working from the defined matrix established from the PCI information, the Division and the FAA are able to schedule capital improvement and maintenance funds to needed projects.

*The 2006 Statewide Airport Inventory and Implementation Plan is in the final stages of revision and should be available within the next months.



A GOAL OF SAFER SKIES

Over the past year, the CDOT-Aeronautics Division and the Colorado Aeronautical Board have made strides toward providing a safer flying environment in our state's unique terrain.

54 full-service **Automated Weather Observation System (AWOS)** sites are reporting current conditions from airports and twelve mountain passes or other critical locations. Those sites not federally-funded that were previously only locally accessible, are currently being earmarked for inclusion into the national grid, thus making their information available to Flight Service Stations and the National Weather Service for use nationwide.

Survey information has been forwarded to the Federal Aviation Administration in preparation for the certification of **non-precision GPS approaches** at eleven critical airports where no previous instrument landing procedure was available. Approaches at Hopkins Field in Nucla and Walden-Jackson County Airport in Walden are anticipated shortly.

Responding to the increased demand at Colorado's mountain airports, a radar services test platform will be undertaken to provide **multi-lateration radar and Automated Dependent Surveillance-Broadcast (ADS-B)** facilities in northwestern Colorado. The improved coverage will impact the way Denver Center - Air Traffic Control "sees" aircraft in mountainous terrain where conventional radar is incapable of monitoring below the mountainous terrain. Both the initial test platform and the anticipated future expanded of service coverage are whole-heartedly supported by the Colorado Aeronautical Board, the Colorado Transportation Commission and the Federal Aviation Administration-Air Traffic Organization. Work is intended to begin on test areas in Moffat, Routt and Garfield Counties before the end of 2006. Completion of this first phase is expected within eighteen months of start-up.

COLORADO AT NBAA

The **National Business Aviation Association (NBAA) Convention and Trade Show** has long been one of the premier annual aviation attractions for corporate and individual owners of “biz” aircraft and the meeting place for hundreds of new ideas and products.

With the CDOT-Aeronautics Division in the lead, 16 Colorado aviation interests joined to share the 2000 sq. ft. **COLORADO PAVILION** at the fall 2005 NBAA convention in Orlando. The presence of nine commercial service and regional airports - and a mechanical roping horse named *Thunder* - were “high-light” events, assuring Colorado airports the attention their superb facilities and exciting visitor options deserved from the nearly 30,000 attendees.

Participating in this collaborative effort were Walker Field Airport, Gunnison County Airport, Gunnison-Crested Butte Tourism Association, Akron-Colorado Plains Regional Airport, Colorado Springs Airport, Greeley-Weld County Airport, Front Range Airport, Adams County Economic Development, Western Colorado Economic Alliance, Jefferson County Airport, Jefferson County Economic Development, Rifle-Garfield County Airport, Centennial Airport, the Colorado Airport Operators Association, the Governor’s Office of Economic Development and the Colorado Division of Aeronautics.



AIR SERVICE IN COLORADO

Air service plays a critical role in the well-being of our State. The efficient movement of people and goods depends on expanding aviation facilities that provide safe, timely and economical delivery throughout Colorado.

Airline hub services through Denver International Airport serve the world; national and regional carriers bring passengers and goods into statewide markets; the tourism industry relies heavily on introducing new and return visitors to our mountain communities with point-to-point direct service from most of the nation’s major cities.

| | | |
|--|------------|---------|
| Denver International Airport | 20,799,886 | +1.93% |
| Colorado Springs Municipal Airport | 1,025,452 | +0.08% |
| Eagle County Regional Airport | 213,228 | +9.81% |
| Aspen-Pitkin County Airport | 193,961 | +5.26% |
| Walker Field-Grand Junction | 156,815 | +11.52% |
| Yampa Valley Regional Airport-Hayden | 129,755 | +7.84% |
| Durango-La Plata County Airport | 101,742 | +5.37% |
| Montrose Regional Airport | 78,669 | +8.59% |
| Gunnison-Crested Butte Regional Airport | 44,865 | +16.85% |
| Fort Collins-Loveland Municipal Airport | 34,669 | +8.58% |
| Telluride Regional Airport | 18,134 | -1.94% |
| Cortez Municipal Airport | 8,205 | +4.26% |
| San Luis Valley Regional Airport-Alamosa | 5,443 | +4.92% |

Data contained in this report represents annual figures from 2005 as provided by the FAA.

AVIATION EDUCATION

Partnering with **Experimental Aircraft Association (EAA)**, **Civil Air Patrol**, the **Tuskegee Airmen**, the **Wings Over the Rockies Museum**, **Boy and Girl Scouts**, **Boys and Girls Clubs**, the **Aeronautics Division Aviation Education Program** continues to grow with:

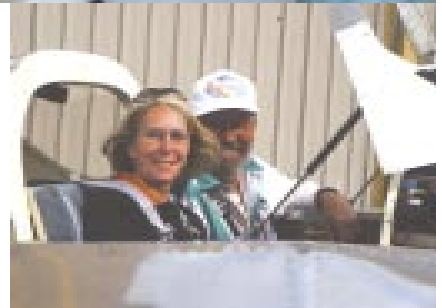
KIDSPACE: Hands-on aviation activities for more than 1000 kids at airshows and fly-ins - while training local communities to serve their local airports.

SCIENCE OF FLIGHT TEACHER WORKSHOPS: 5 statewide locations, preparing teachers to introduce an aviation curriculum into their classrooms - and giving them an opportunity for continuing education credit.

SCIENCE OF FLIGHT HANDS-ON KITS: Elementary classroom curriculum kits bringing hands-on aviation to 30 schools through a grant from EAA.

GET 'EM FLYING: EAA Young Eagles "Fly-Day" for more than 600 students completing an aviation science unit.

ON-LINE AVIATION CALENDAR: 300 annual events from pilot organization meetings to nationally-recognized events at www.colorado-aeronautics.org.



STATE INFRASTRUCTURE BANK

Utilizing the unique program established by Congress in 1995 and enacted by the Colorado Legislature in 1998, the Colorado Transportation Commission supports local operators of transportation facilities with funds available through a low interest revolving loan program. The Aviation element of the **Colorado State Infrastructure Bank** funds eleven airport accounts totaling **\$10,351,428.00**.

Funds from State Infrastructure Bank loans can be used to augment existing federal, state and local funding for major infrastructure development, as well as support long-term goals to enhance services available to the flying public. The current interest rate, set each year by the Transportation Commission, is 4% through state fiscal year 2007.

Colorado airports participating in the State Infrastructure Bank loan program include **Front Range Airport** in metro Denver, **Aspen-Pitkin County Airport**, **Eagle County Regional Airport**, **Meadow Lake Airport** in Colorado Springs, **Gunnison-Crested Butte Regional Airport**, and **Stevens Field** in Pagosa Springs.

State Infrastructure Bank currently has \$10,351,428.00 on loan to airport sponsors statewide.

COLORADO DISCRETIONARY AVIATION GRANT PROGRAM

Each year, the Colorado Aeronautical Board administers the prudent distribution of the **Colorado Aviation Fund** through individual airport grants and statewide system improvements. In 2006, a share of revenues from aviation fuel taxes awarded as grants amounted to nearly \$7 million. These awards were used to address airfield maintenance and safety, local match for federally-funded airport improvements, long-term planning and system-wide safety programs.

INDIVIDUAL GRANTS TO AIRPORTS

Airport sponsors participate in an annual funding cycle to meet specific needs at their facilities:

| | | |
|---|--|--------------|
| Town of Akron - CO Plains Reg. Apt. | Grand County - McElroy Field | \$10,526.00 |
| \$110,000.00 | City of Holyoke-Holyoke Muni. Apt. | \$11,842.00 |
| Arapahoe County - Centennial Apt. | Jackson County-Walden Apt. | |
| \$50,000.00 | \$192,920.00 | |
| Archuleta County - Stevens Field | Jefferson County - Jeffco Apt. | |
| \$161,236.00 | \$210,527.00 | |
| City of Boulder-Boulder Muni. Apt. | City of Longmont - Vance Brand Muni. Apt. | \$80,000.00 |
| \$25,000.00 | Meadowlake Apt.Assn-Meadowlake Apt. | \$200,000.00 |
| Town of Buena Vista-Central CO Reg. Apt. | Moffat County - Craig-Moffat County Apt. | \$15,789.00 |
| \$20,695.00 | City of Monte Vista-Monte Vista Muni. Apt. | \$97,700.00 |
| City of Burlington-Burlington-Kit Carson Apt. | Montrose County - Hopkins Field | \$11,842.00 |
| \$68,421.00 | Montrose County - Montrose Reg. Apt. | \$78,947.00 |
| City of CO Sprgs.- CO Springs Muni. Apt. | Pitkin County - Aspen-Pitkin County Apt. | \$250,000.00 |
| \$150,000.00 | Routt County-Yampa Valley Reg. Apt. | \$200,000.00 |
| City of Cortez - Cortez Muni. Apt. | City of Steamboat Sprgs.-Bob Adams Fld. | \$3,947.00 |
| \$7,895.00 | City of Sterling-Sterling Muni. Apt. | \$8,810.00 |
| Delta County - Blake Field | Walker Field Apt. Auth. - Walker Field | \$54,157.00 |
| \$19,842.00 | Wings Over the Rockies Museum | \$65,000.00 |
| Delta County-North Fork Valley Apt. | | |
| \$34,500.00 | | |
| Eagle County - Eagle County Reg. Apt. | | |
| \$210,000.00 | | |
| Town of Erie - Erie Muni. Apt. | | |
| \$7,895.00 | | |
| Cities - Ft.Collins-Loveland Muni.Apt. | | |
| \$250,000.00 | | |
| City of Ft. Morgan - Ft. Morgan Muni. Apt. | | |
| \$3,947.00 | | |
| Fremont County - Fremont County Apt. | | |
| \$4,500.00 | | |

Total Individual Discretionary Grants \$3,138,957.00

STATEWIDE AVIATION PROGRAM GRANTS

Statewide programs that impact aviation safety and the development of Colorado's system of airports are annually underwritten by the Colorado Aeronautical Board:

| | |
|---|----------------|
| Automated Weather Observation System Development and Maintenance | \$268,300.00 |
| Shared Cost - Denver Intl. Airport Surplus Equipment Sales to Airports | \$94,250.00 |
| Statewide Aviation Education Programs | \$51,000.00 |
| Publication and distribution of Newsletter, Airport Directory and Aeronautical Charts | \$90,000.00 |
| Aviation System and Capital Improvement Planning | \$379,578.00 |
| Airfield Maintenance - Crack sealant Rebate and Windsocks | \$55,000.00 |
| Airfield Pavement Research and Inspection | \$45,000.00 |
| Mountain Radar Study and Implementation | \$2,700,000.00 |
| Aviation Management Internship Program | |
| \$65,000.00 | |
| Colorado Airports at National Business Aviation Association Trade Show | \$75,000.00 |

TOTAL COLORADO DISCRETIONARY AVIATION GRANTS \$6,962,085.00

TAX REVENUE REIMBURSEMENTS TO AIRPORTS

Publicly-owned, public-use airports are recipients of aviation fuel excise and sales tax reimbursements which equal \$.04 per gallon excise tax and 65% of the total amount of fuel sales tax collections at their airport. These monthly revenue rebates are ear-marked for aviation purposes only and are used for airport operations, maintenance and personnel costs.

| | | | |
|--|-------------------|---|----------------|
| CO Plains Reg. Apt.-Akron | \$4,175.19 | Burlington-Kit Carson Airport | \$2,346.71 |
| Aspen-Pitkin County Airport | \$254,240.92 | Centennial Airport-Denver | \$849,332.22 |
| Blake Field-Delta | | CO Springs Municipal Airport | \$692,229.39 |
| \$1,322.24 | | Cortez Municipal Airport | \$12,191.15 |
| Boulder Municipal Airport | \$3,088.46 | Cuchara Valley Airport-La Veta | 00.00 |
| Brush Municipal Airport | 00.00 | Denver International Airport | \$8,121,597.62 |
| Central CO Regional Airport-Buena Vista | \$3,353.74 | | |
| Durango-La Plata County Airport | \$104,135.27 | Garfield County Regional Airport-Rifle | \$88,350.04 |
| Eagle County Airport | \$371,814.45 | Glenwood Springs Municipal Airport | \$978.49 |
| Ft. Collins-Loveland Municipal Airport | \$29,792.64 | Granby Airport | \$360.72 |
| Ft. Morgan Municipal Airport | \$2,689.81 | Greeley-Weld County Airport | \$16,751.82 |
| Fremont County Airport-Canon City | \$6,388.88 | Gunnison-Crested Butte Regional Airport | \$25,789.21 |
| Front Range Airport-Denver | \$22,419.90 | Harriet Alexander Field-Salida | \$1,668.81 |
| | | | |
| Holly Airport | 00.00 | Lamar Municipal Airport | \$5,686.18 |
| Holyoke Municipal Airport | \$813.97 | Leach Field-Center | 00.00 |
| Hopkins Field-Nucla | \$429.08 | Limon Municipal Airport | \$321.39 |
| Jefferson County Airport-Denver | \$330,799.73 | Meeker Airport | \$4,682.06 |
| McElroy Field-Kremmling | \$6,150.05 | Moffat County Airport-Craig | \$2,234.98 |
| La Junta Municipal Airport | \$2,122.31 | Monte Vista Municipal Airport | \$1,000.09 |
| | | | |
| Montrose Regional Airport | \$116,542.46 | Telluride Regional Airport | \$56,402.31 |
| North Fork Valley Airport-Paonia | \$78.59 | Tri-County-Erie Municipal Airport | \$2,808.61 |
| Pueblo Memorial Airport | \$115,418.23 | Perry Stokes Airport-Trinidad | \$2,733.08 |
| Rangely Airport | \$434.82 | Vance Brand Municipal Airport-Longmont | \$8,392.17 |
| San Luis Valley Regional Airport-Alamosa | \$10,360.56 | Walker Field-Grand Junction | |
| Spanish Peaks Airfield-Walsenburg | 00.00 | \$185,544.81 | |
| Bob Adams Field-Steamboat Springs | \$2,731.26 | Wray Municipal Airport | \$593.33 |
| Sterling Municipal Airport | \$2,524.23 | Yampa Valley Regional Airport-Hayden | \$99,674.50 |
| Stevens Field- Pagosa Springs | \$3,773.78 | | |



Total Excise Tax Reimbursements

\$1,375,821.81

Total Sales Tax Reimbursements

\$10,204,214.24

COLORADO AERONAUTICAL BOARD

The COLORADO AERONAUTICAL BOARD is the policy-making body that oversees the operations of the CDOT-Aeronautics Division. It is an honorary seven-member Board appointed by the Governor to serve three-year terms as representatives of defined constituencies in the aviation community.

Harold Patton, Chairman
representing Eastern Plains governments
2350 Williamette Lane
Greenwood Village, CO 80121
PH: 303-721-6333
FAX: 303721-6367
email: pattonharold@qwest.net



Mr. Patton has been active in community interests in the Denver metro area for many years, including a close relationship with Centennial Airport as an airport authority chairman and active pilot. He is associated with the family-owned oil and gas exploration and production corporation. His long aviation career includes both military and civilian flying.

Harold J. Felderman, Vice-chairman
representing Eastern Plains governments
2538 54th Avenue
Greeley, CO 80634
PH: 970-330-0558
email: hfeldy@comcast.net



Mr. Felderman serves the Aeronautical Board from a strong background in military and civilian aviation. He is retired from Jeppesen Co., a leader in the production of aviation charts and services, is a past member of the Greeley City Council and served on the Greeley-Weld County Airport Authority. His military career included more than 100 sorties over Vietnam.

E. Patrick Wiesner, Secretary
representing pilot organizations
2907 Fairway View
Castle Rock, CO 80108
PH: 303-688-2249
FAX: 303-397-7619
email: pwiesner@wiesnerpublishing.com
pat.wiesner@gmail.com



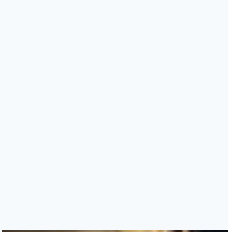
Mr. Wiesner is the retired owner of Wiesner Publishing and is a regular contributor to COLORADO BIZ and COLORADO HOMES AND LIFESTYLES. He resides in Castle Rock and holds an Airline Transport Pilot rating with type-ratings for a number of aircraft, including DC-3, Cessna Citation and KingAir.

Larry Romrell
representing aviation interests-at-large
441 Russellville Road
Franktown, CO 80116
PH: 303-814-1454
FAX: 303-814-1491
email: larry@libertymedia.com



Mr. Romrell serves on the Board of Directors of Liberty Media Corp and the Advisory Board of Guaranty Bank and Trust. He has been active in the telecommunications industry since 1961. He is directly responsible for corporate fleet operations at Liberty Media. He is a private pilot and resides in Franktown.

Dave Ubell
representing west slope governments
161 Townsend Ave.
Montrose, CO 81401
PH: 970-249-7755
Res: 970-3235357
email: dubell@co.montrose.co.us



Mr. Ubell has served as a Montrose County Commissioner since 1999, as well as a director of the western slope county organization, Club 20. He is a farmer and rancher who has been active in community, environmental and economic development interests.

Dale Hancock
representing west slope governments
108 Eighth Street - Suite 215
Glenwood Springs, CO 81602
PH: 970-945-0521
email: dhancock@garfield-county.com



Mr. Hancock is Director of Operators for Garfield County, responsible for the management of multiple county services, including the Garfield County Regional Airport at Rifle. He provides support staff for the Garfield County Commission in the fields of corrections, community services, telecommunications and public information.

Dennis Heap
representing airport management
10750 Nucla Street
Commerce City, CO 80022-0560
PH: 303-286-6786
FAX: 303-261-9195
email: dheap@ftg-airport.com



Mr. Heap's careers in both the commercial airline industry and as Director of Aviation at Front Range Airport amply prepare him as representative of airport management. He is past-president of the Colorado Airport Operators Association and serves on numerous transportation and economic development boards.