



Office of Research and Analysis
Colorado Department of Revenue
 (303) 866-3089
 ora@spike.dor.state.co.us

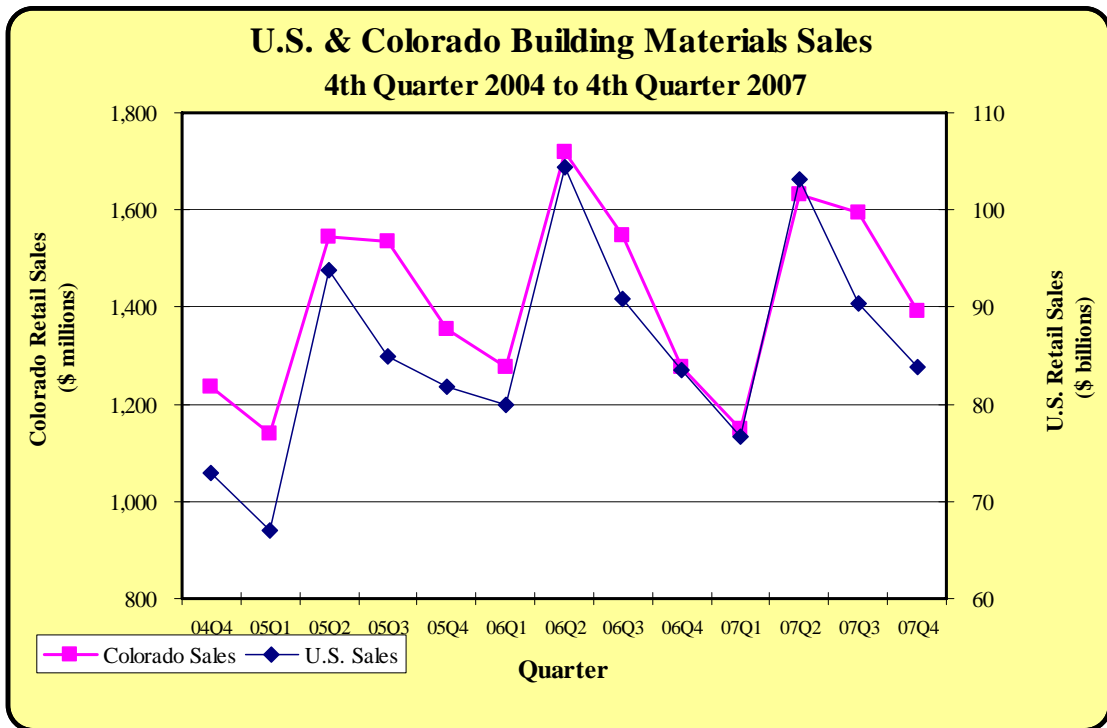
Colorado Building Material Sales
Selected Counties

Fourth Quarter 2007

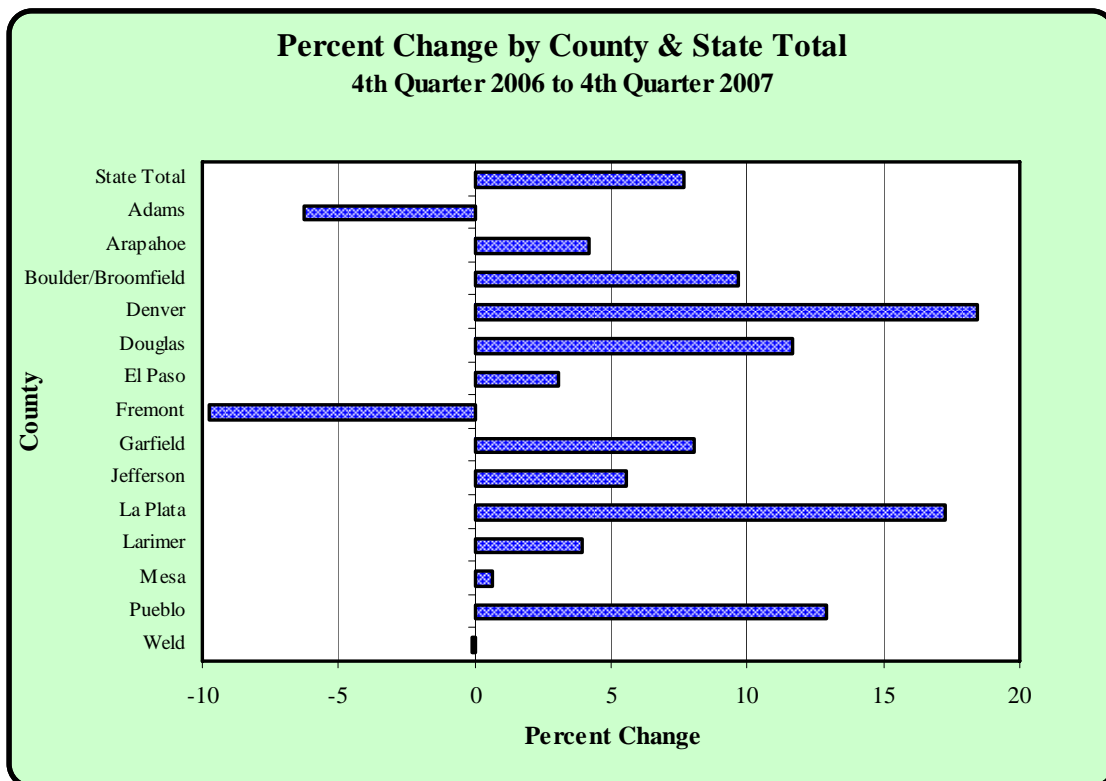
This issue presents data on Colorado building materials sales for the fourth quarter 2007. This report shows retail sales for each of the seven Denver metro area counties and for the counties of El Paso, Fremont, Garfield, La Plata, Larimer, Mesa, Pueblo, and Weld. Broomfield County's sales are combined with those in Boulder County. The types of retailers included in the chart on the next page are home centers, paint and wallcovering stores, hardware stores, and specialized building material dealers. The period shown in this report is the fourth quarter of 2007 compared to the fourth quarter of 2006.

The graph below shows national versus Colorado retail sales. It is important to note that both the national and Colorado data in this graph include sales by outdoor equipment stores and nurseries as well as the categories listed in the above paragraph. Nationally, sales of building materials increased 0.4 percent to \$83.8 billion in the fourth quarter 2007 over the fourth quarter 2006. Colorado's retail sales of \$1,309.1 million in fourth quarter 2007 were 7.7 percent above the same quarter from a year ago. The reader should also note the source of the national figures has been changed to unadjusted Census Bureau retail sales.

Sales in the counties comprising this report increased 6.1 percent over last year. The largest gain in the fourth quarter 2007 over the same quarter last year occurred in Denver County (+18.4 percent). Fremont and Adams counties respectively decreased 9.8 and 6.3 percent compared to last year.



County	Retail Sales 2007Q4 \$000s	Retail Sales 2006Q4 \$000s	Percent Change
Adams	\$111,941	\$119,456	-6.3%
Arapahoe	136,514	131,007	4.2
Boulder/Broomfield	72,027	65,692	9.6
Denver	182,402	154,015	18.4
Douglas	80,457	72,057	11.7
El Paso	128,782	124,939	3.1
Fremont	8,728	9,674	-9.8
Garfield	25,606	23,705	8.0
Jefferson	97,738	92,607	5.5
La Plata	20,862	17,790	17.3
Larimer	80,120	77,095	3.9
Mesa	46,166	45,860	0.7
Pueblo	34,828	30,842	12.9
Weld	38,408	38,445	-0.1
Selected Counties Total	\$1,064,579	\$1,003,183	6.1%
State Total	\$1,309,101	\$1,215,574	7.7%



This report is available electronically as a .pdf file on the Department of Revenue's website at http://www.revenue.state.co.us/stats_dir/wrap.asp?incl=retailsalesreport. It is also available as a Word document. If you would like to receive the report in Word, please contact the Office of Research and Analysis at 303-866-3089 or send an e-mail to ora@spike.dor.state.co.us.