



Office of Tax Analysis
Colorado Department of Revenue
 (303) 866-3089
 ota@spike.dor.state.co.us

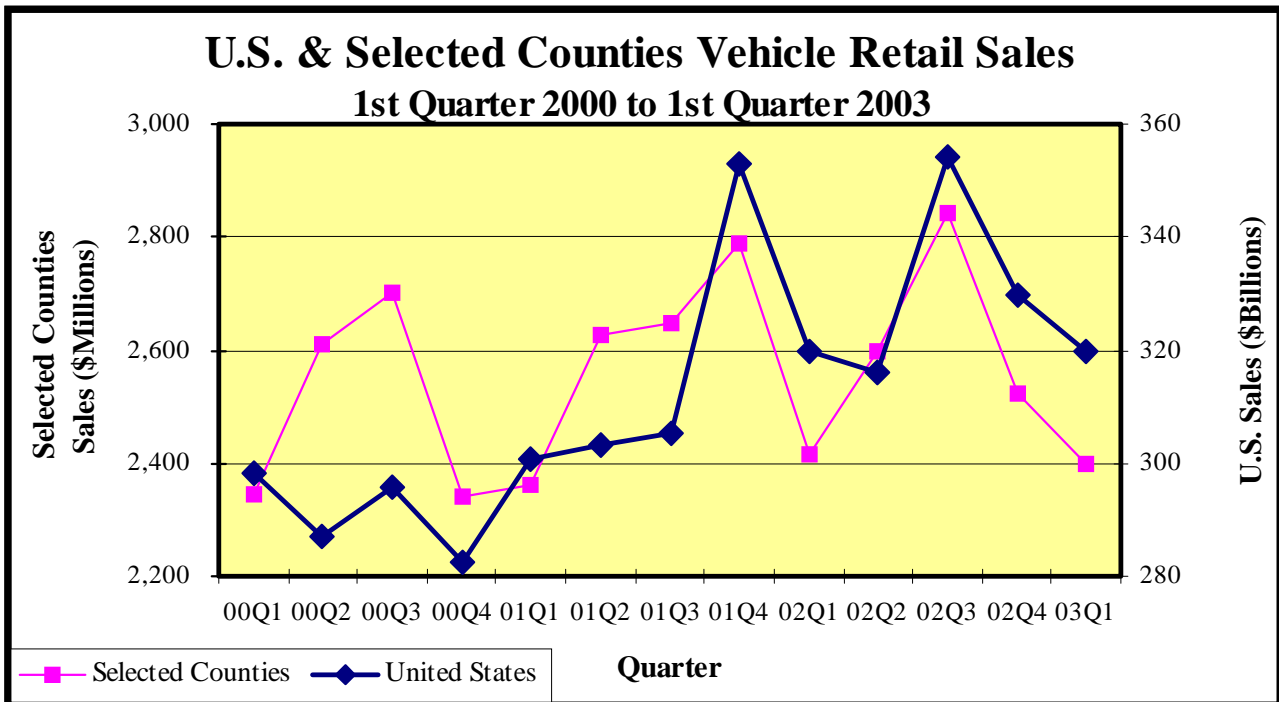
Colorado Motor Vehicle Sales

Selected Counties

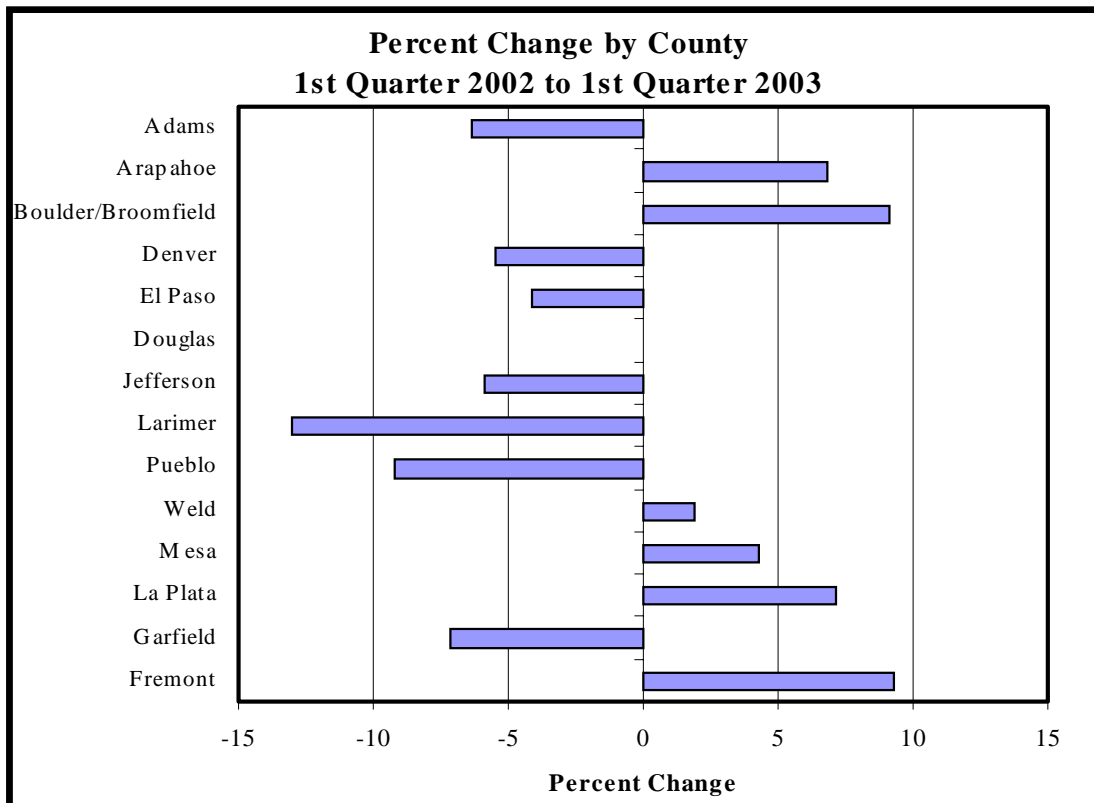
First Quarter 2003

This issue presents data on first quarter 2003 motor vehicle retail sales for each of the seven Denver metro counties and the counties of El Paso, Larimer, Pueblo, Weld, Fremont, Garfield, La Plata, and Mesa. Broomfield County's sales are combined with those in Boulder County. In addition, the graph below compares sales of new and used cars and trucks for the United States as a whole to total sales of the counties listed above for the same period.

Sales of motor vehicles in the counties reviewed decreased 4.9 percent to \$2.40 billion in first quarter 2003 over fourth quarter 2002. The data also show that sales of motor vehicles in the counties reviewed decreased 0.6 percent in first quarter 2003 over first quarter 2002. Nationally, sales of motor vehicles decreased a scant 0.04 percent over last year to about \$319.7 billion. The smallest county reviewed, Fremont County, posted the largest increase at 9.2 percent. Larimer County posted the largest decrease at -13.0 percent.



COUNTY	RETAIL SALES 2003Q1 \$000s	RETAIL SALES 2002Q1 \$000s	PERCENTAGE CHANGE
Adams	\$196,171	\$209,451	-6.3%
Arapahoe	713,295	667,930	6.8
Boulder/Broomfield	204,099	186,998	9.1
Denver	209,045	221,239	-5.5
Douglas	75,996	75,992	0.0
El Paso	284,641	296,829	-4.1
Fremont	9,783	8,955	9.2
Garfield	36,598	39,409	-7.1
Jefferson	275,725	292,827	-5.8
La Plata	21,734	20,288	7.1
Larimer	129,441	148,850	-13.0
Mesa	72,811	69,834	4.3
Pueblo	62,417	68,761	-9.2
Weld	109,209	107,145	1.9
TOTAL	\$2,400,964	\$2,414,508	-0.6%



This report is available electronically as a Word document. If you would like to receive the report in electronic format, please contact the Office of Tax Analysis at 303-866-3089 or send an e-mail to ota@spike.dor.state.co.us.