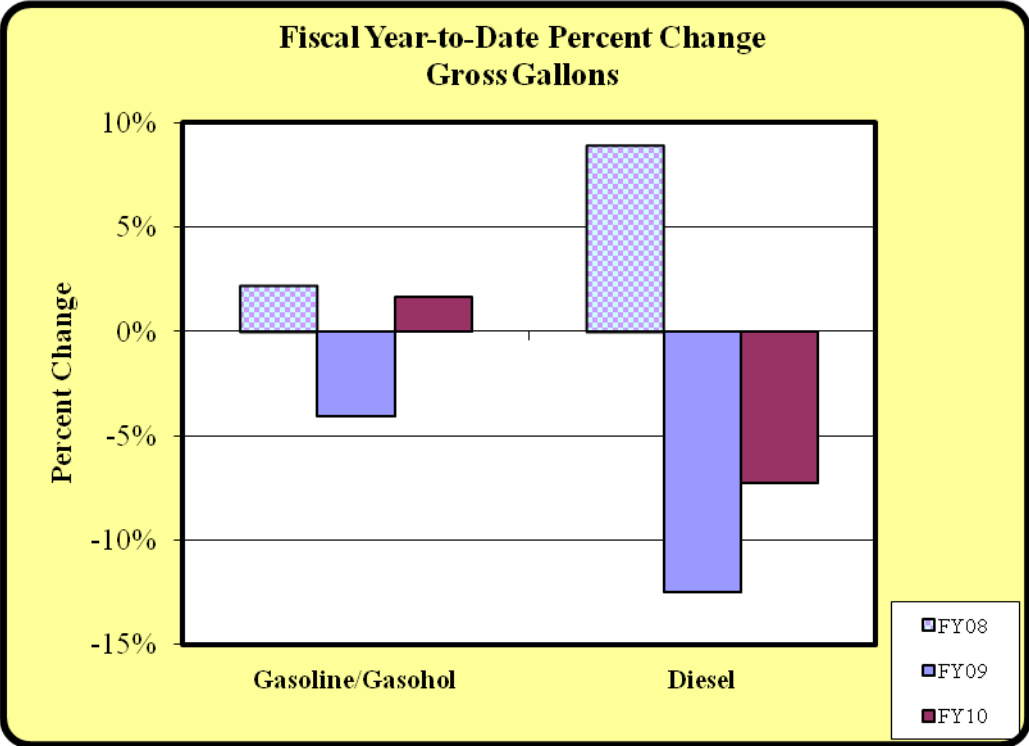


**Colorado Department of Revenue
Office of Research and Analysis
Monthly State Motor Fuel Gallons and Receipts**

		January 2010	FY09-10 YTD	FY08-09 YTD	Percent Change
GASOLINE/ GASOHOL	Gross Gallons	171,923,091	1,266,348,576	1,245,495,733	1.7%
	Exemptions/Deductions	8,635,566	61,768,421	55,065,047	12.2%
	Refunds	3,168,267	9,057,129	8,818,671	2.7%
	Net Gallons	160,119,258	1,195,523,026	1,181,612,015	1.2%
DIESEL:	Gross Gallons	45,492,067	357,737,925	385,741,460	-7.3%
	Exemptions/Deductions	7,471,437	50,714,387	53,893,153	-5.9%
	Refunds	5,144,565	16,742,774	14,952,755	12.0%
	Distributed to Other States	373,207	7,666,950	11,841,172	-35.3%
	Net Gallons	32,876,065	290,280,764	316,895,552	-8.4%
ALTERNATIVE FUELS	Gross Gallons	542,697	3,289,238	3,297,485	-0.3%
	Exemptions/Deductions	424,883	2,369,353	1,991,980	18.9%
	Net Gallons	117,814	919,885	1,305,505	-29.5%
AVIATION GASOLINE	Gross Gallons	347,253	3,072,231	2,959,000	3.8%
	Exemptions/Deductions	49,354	312,245	273,292	14.3%
	Refunds	76,202	197,111	182,862	7.8%
	Net Gallons	221,697	2,562,875	2,502,846	2.4%
AVIATION JET FUEL	Gross Gallons	16,152,009	104,969,104	130,205,322	-19.4%
	Exemptions/Deductions	12,796,194	84,140,864	108,430,459	-22.4%
	Refunds	475,807	3,008,359	2,314,557	30.0%
	Net Gallons	2,880,008	17,819,881	19,460,307	-8.4%
SUMMARY	Gross Gallons Total	234,457,117	1,735,417,074	1,767,699,000	-1.8%
	Exemptions/Deductions Total	29,377,434	199,305,270	219,653,931	-9.3%
	Refunds Total	8,864,841	29,005,373	26,268,845	10.4%
	Distributed to Other States	373,207	7,666,950	11,841,172	-35.3%
	Net Gallons Total	196,214,842	1,507,106,430	1,521,776,224	-1.0%
RECEIPTS	Net Gasoline/Gasohol @ 22 cents	\$ 34,307,726	\$ 259,544,430	\$ 259,022,308	0.2%
	Net Special Fuel @ 20.5 cents	6,779,354	60,321,010	64,317,332	-6.2%
	Net Aviation Gasoline @ 6 cents	15,386	137,943	132,937	3.8%
	Net Aviation Jet Fuel @ 4 cents	66,233	569,642	778,315	-26.8%
	Net All Fuels Total	\$ 41,168,698	\$ 320,573,024	\$ 324,250,892	-1.1%



Note: Gallons and excise tax receipts may not reconcile. Gallons are tracked by actual period of activity, while excise taxes are based on receipts during the calendar month.

Prepared by the Office of Research and Analysis, 303-866-5777 or ora@spike.dor.state.co.us