



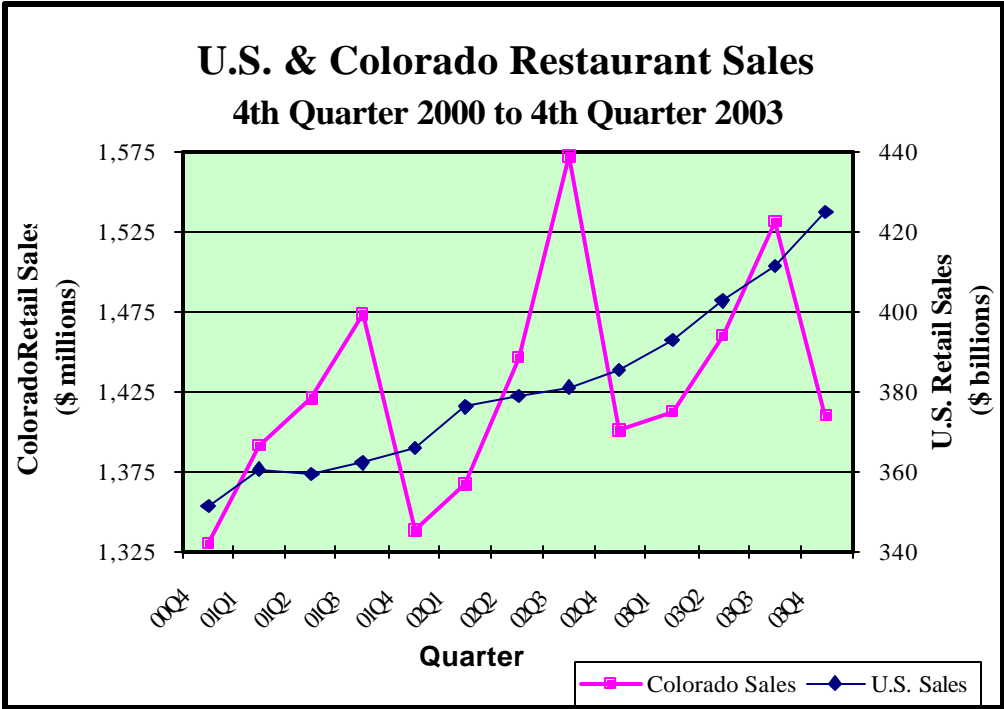
# Colorado Restaurant Sales 2003 Fourth Quarter

Office of Tax Analysis      Colorado Department of Revenue  
303- 866-3089                      ota@spike.dor.state.co.us

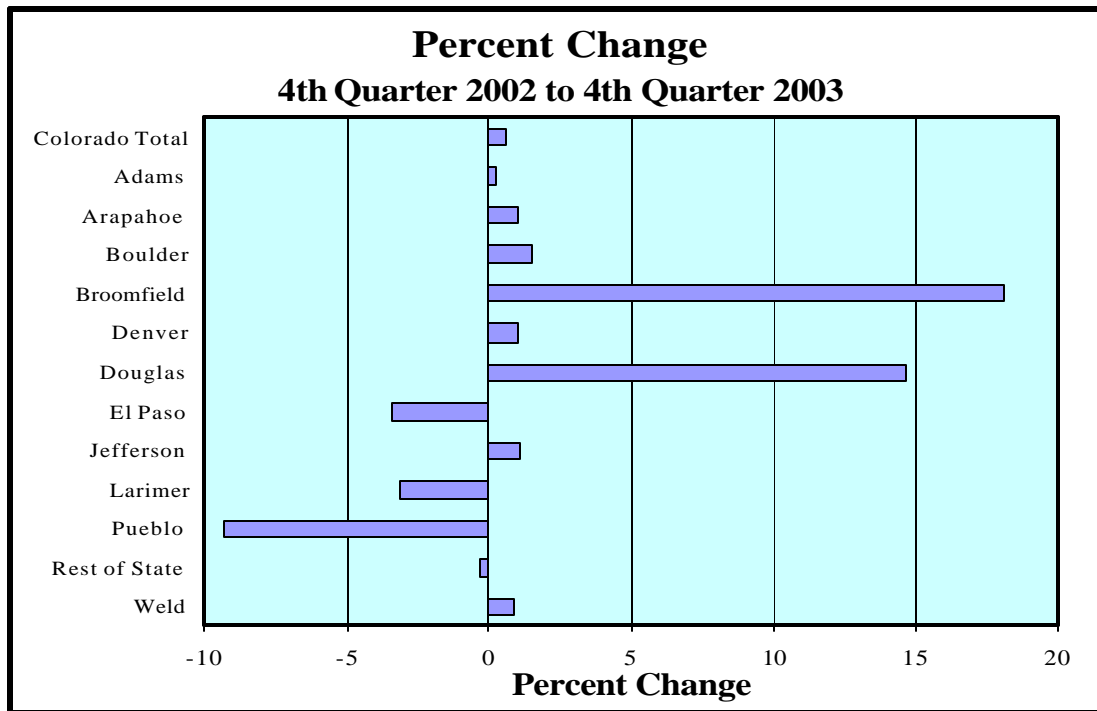
This issue presents data on Colorado restaurant sales for the fourth quarter 2003. Sales are presented for each of the seven Denver metro area counties; El Paso, Larimer, Pueblo, and Weld counties; and sales by restaurants in the rest of the State. For comparison, restaurant sales for the United States as a whole are also shown for the same time period. Data in this report represent sales by businesses whose primary activity is food preparation for on-premise consumption.

The data show that Colorado restaurant industry sales in the fourth quarter 2003 increased 0.6 percent, to about \$1.41 billion, over fourth quarter last year. Sales for the entire United States increased 10.2 percent, to \$424.8 billion, over the same period. As shown on the next page, Broomfield County experienced the largest increase at 18.1 percent. Of the counties reviewed, Pueblo County showed the largest decrease over last year at -9.4 percent.

The graph below shows restaurant sales in the state compared to those in the U.S.



| COUNTY        | RETAIL SALES 2003Q4<br>\$000s | RETAIL SALES 2002Q4<br>\$000s | PERCENTAGE CHANGE |
|---------------|-------------------------------|-------------------------------|-------------------|
| Adams         | \$82,570                      | \$82,385                      | 0.2%              |
| Arapahoe      | 162,392                       | 160,705                       | 1.0               |
| Boulder       | 94,305                        | 92,907                        | 1.5               |
| Broomfield    | 25,486                        | 21,581                        | 18.1              |
| Denver        | 267,872                       | 265,113                       | 1.0               |
| Douglas       | 74,316                        | 64,812                        | 14.7              |
| El Paso       | 146,735                       | 152,042                       | -3.5              |
| Jefferson     | 154,274                       | 152,609                       | 1.1               |
| Larimer       | 83,735                        | 85,867                        | -3.1              |
| Pueblo        | 34,828                        | 38,440                        | -9.4              |
| Weld          | 35,228                        | 34,929                        | 0.9               |
| Rest of State | 248,576                       | 249,500                       | -0.4              |
| <b>TOTAL</b>  | <b>\$1,409,755</b>            | <b>\$1,400,891</b>            | <b>0.6%</b>       |



This report is available electronically as a Word document. If you would like to receive the report in electronic format, please contact the Office of Tax Analysis at 303-866-3089 or send an e-mail to ota@spike.dor.state.co.us.