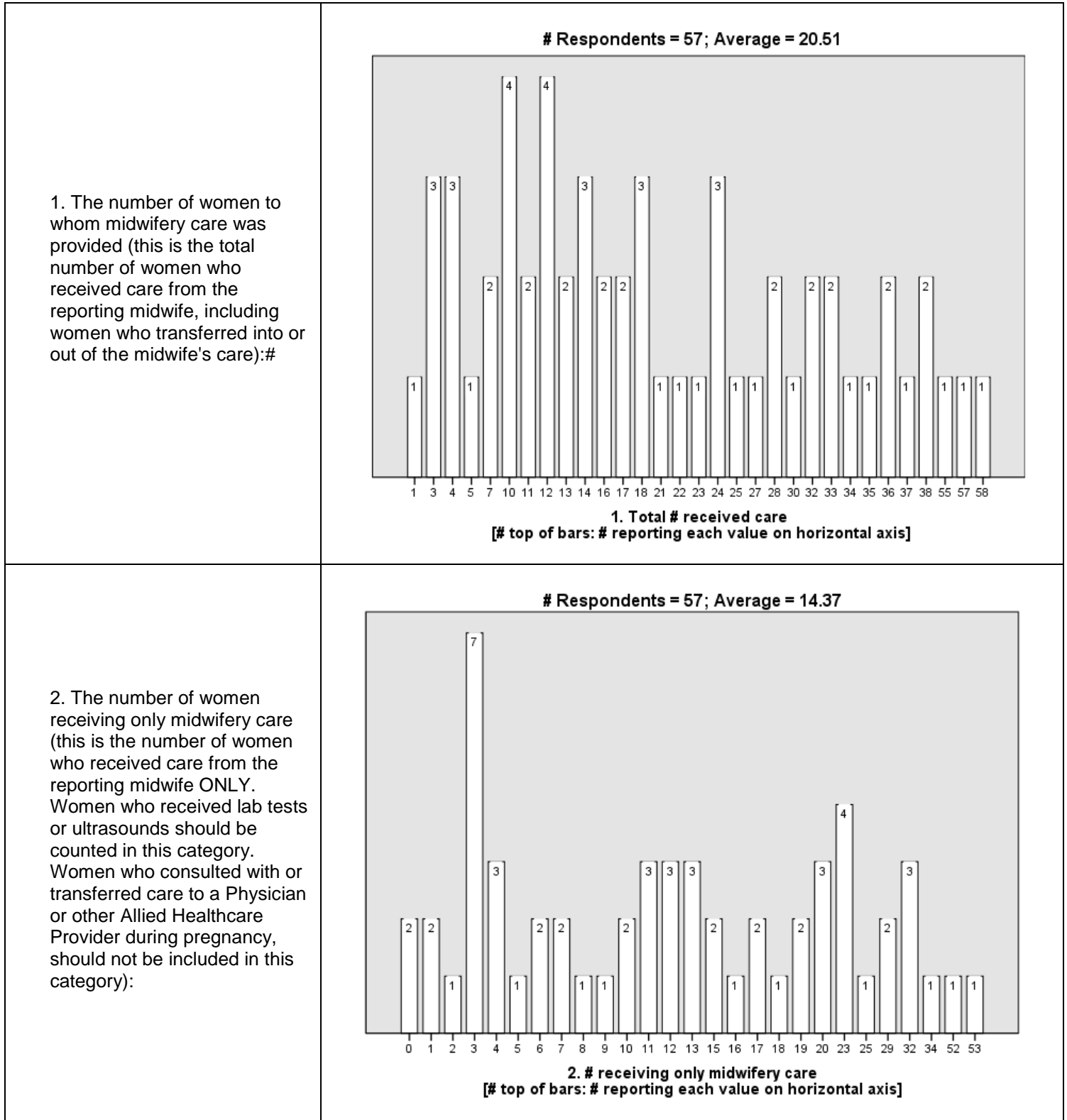


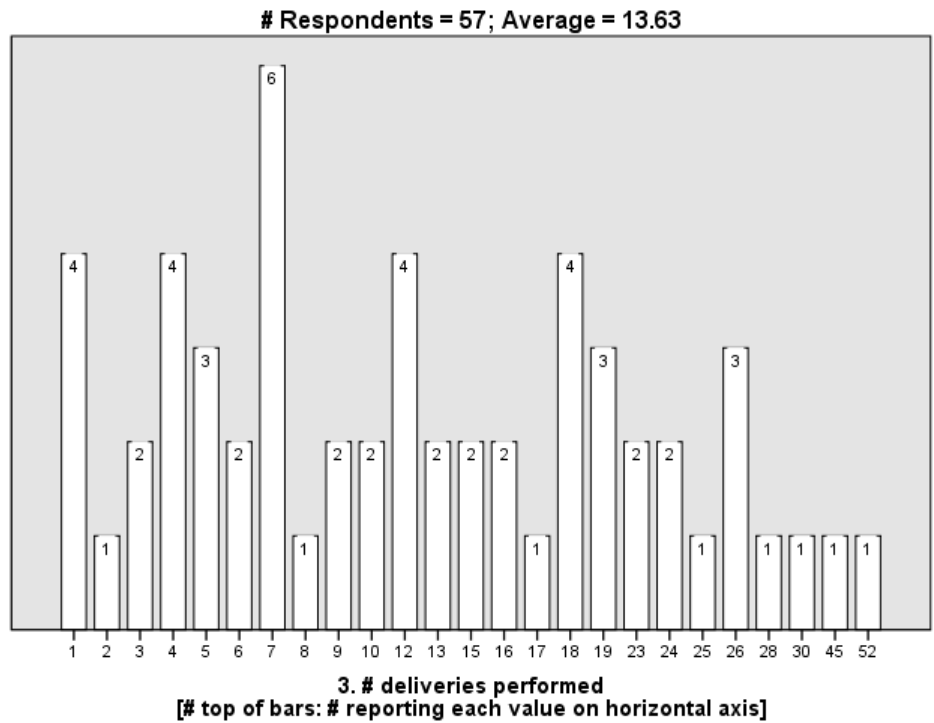
COLORADO MIDWIFERY REGISTRATION 2016 STATISTICAL SUMMARY

Registered Direct-Entry Midwives answered the following questions by submitting their data during the 2016 renewal cycle. Respondents entered a value of “0” if their answer to any question was “zero”.



COLORADO MIDWIFERY REGISTRATION 2016 STATISTICAL SUMMARY

3. The number of deliveries performed (total number of planned homebirth deliveries managed by the reporting midwife):



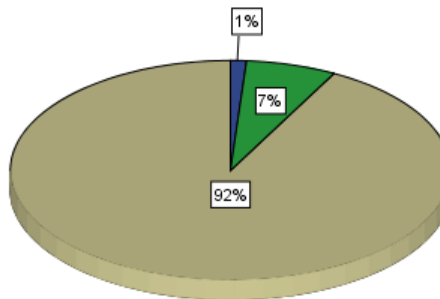
4a.–4c. The number of infants delivered by the reporting midwife, in the following Apgar score groupings (insert answers below):

ONE Minute

- 0–3
- 4–6
- 7–10

Q4a-Q4c: # Respondents = 57

- 4a. 1 min: Apgar Score 0-3
- 4b. 1 min: Apgar Score 4-6
- 4c. 1 min: Apgar Score 7-10



COLORADO MIDWIFERY REGISTRATION 2016 STATISTICAL SUMMARY

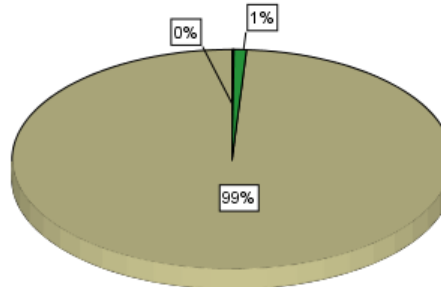
4d.–4f. The number of infants delivered by the reporting midwife, in the following Apgar score groupings (insert answers below):

FIVE Minutes

- 0–3
- 4–6
- 7–10

Q4d-Q4f: # Respondents = 57

- 4d. 5 min: Apgar Score 0-3
- 4e. 5 min: Apgar Score 4-6
- 4f. 5 min: Apgar Score 7-10



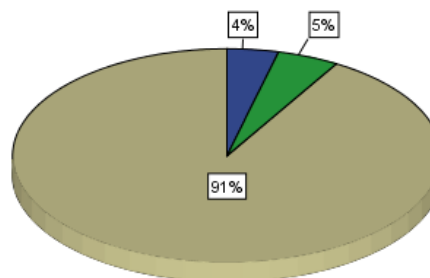
5a.–5c. If available, the number of infants delivered in the hospital after transfer, in the following Apgar score groupings (insert answers below):

ONE Minute

- 0–3
- 4–6
- 7–10

Q5a-Q5c: # Respondents = 57

- 5a. 1 min: Apgar Score 0-3
- 5b. 1 min: Apgar Score 4-6
- 5c. 1 min: Apgar Score 7-10



**COLORADO MIDWIFERY REGISTRATION
2016 STATISTICAL SUMMARY**

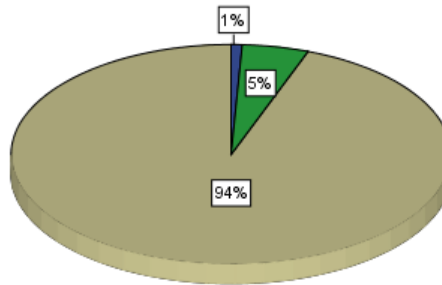
5d.–5f. If available, the number of infants delivered in the hospital after transfer, in the following Apgar score groupings (insert answers below):

FIVE Minutes

- 0–3
- 4–6
- 7–10

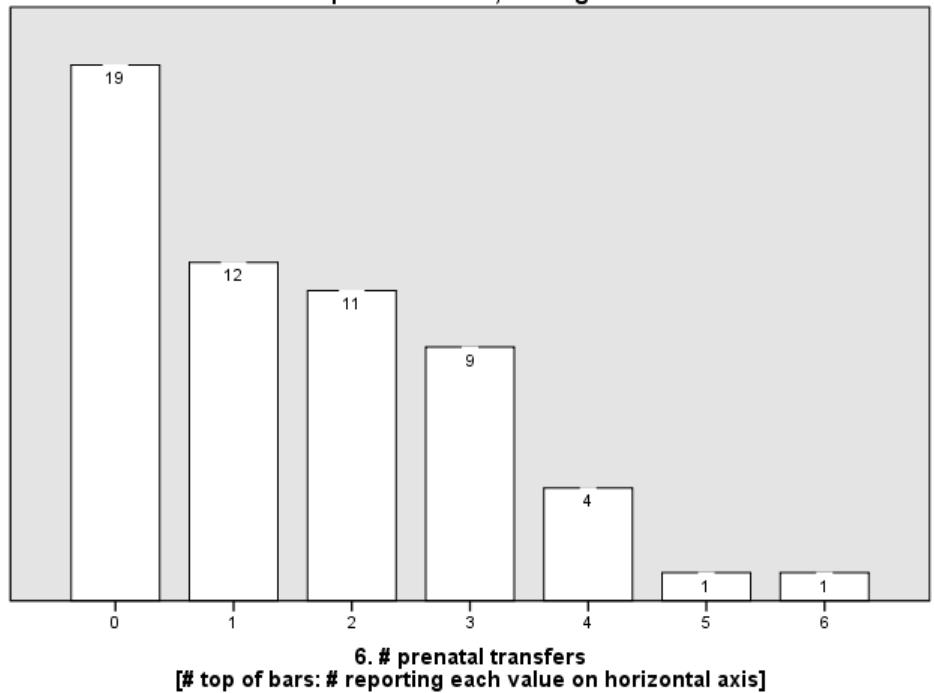
Q5d-Q5f: # Respondents = 57

■ 5d. 5 min: Apgar Score 0-3
 ■ 5e. 5-min: Apgar Score 4-6
 ■ 5f. 5 min: Apgar Score 7-10



6. The number of prenatal transfers (total number of women transferred out of midwifery into physician care prior to birth):

Respondents = 57; Average = 1.54

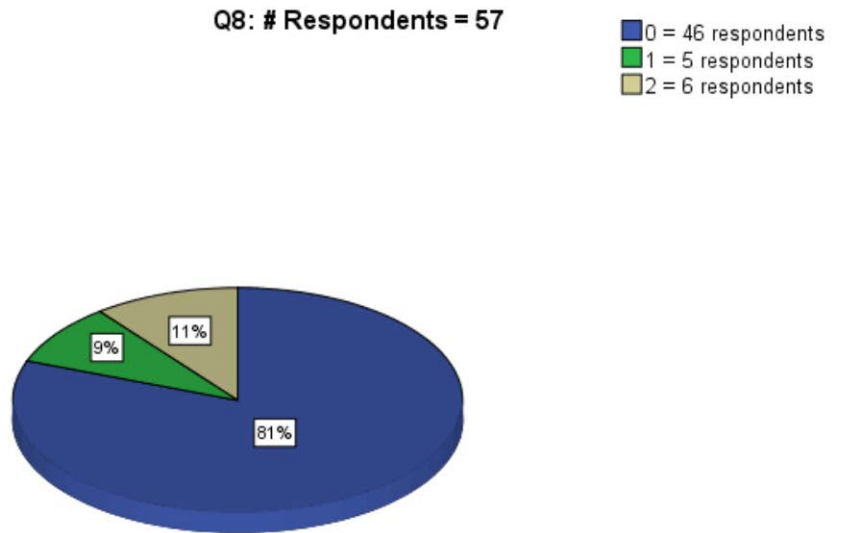


**COLORADO MIDWIFERY REGISTRATION
2016 STATISTICAL SUMMARY**

7. The number of transfers during labor and/or delivery (total number of women who transferred from a planned homebirth into physician care after the onset of labor has been identified):



8. The number of transferred **mothers** immediately following birth within the first 24 hours (total number of women transferred into physician care within the first 24 hours after a planned homebirth):

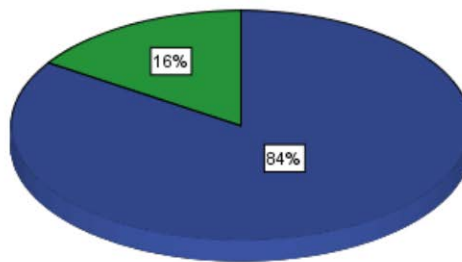


COLORADO MIDWIFERY REGISTRATION 2016 STATISTICAL SUMMARY

9. The number of transferred **infants** immediately following birth within the first 24 hours (total number of infants transferred into physician care within the first 24 hours after a planned homebirth):

Q9: # Respondents = 57

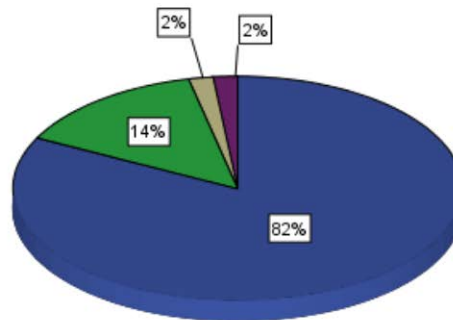
■ 0 = 48 respondents
■ 1 = 9 respondents



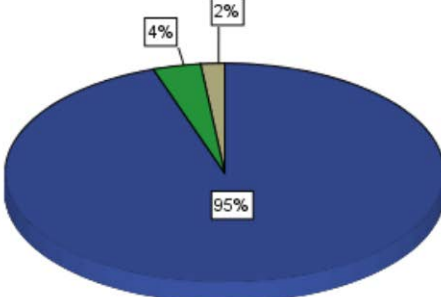
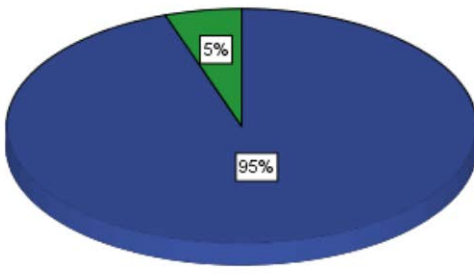
10. The number of infants referred for medical care after 24 hours of age and before 8 days of age (not including referrals for pediatric checkups):

Q10: # Respondents = 57

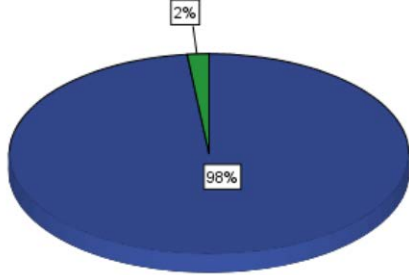
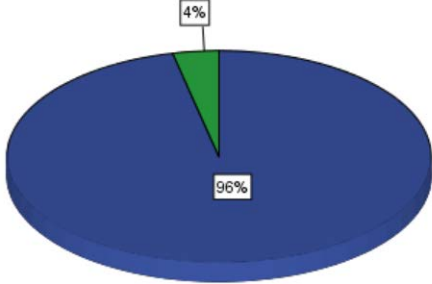
■ 0 = 47 respondents
■ 1 = 8 respondents
■ 2 = 1 respondent
■ 3 = 1 respondent



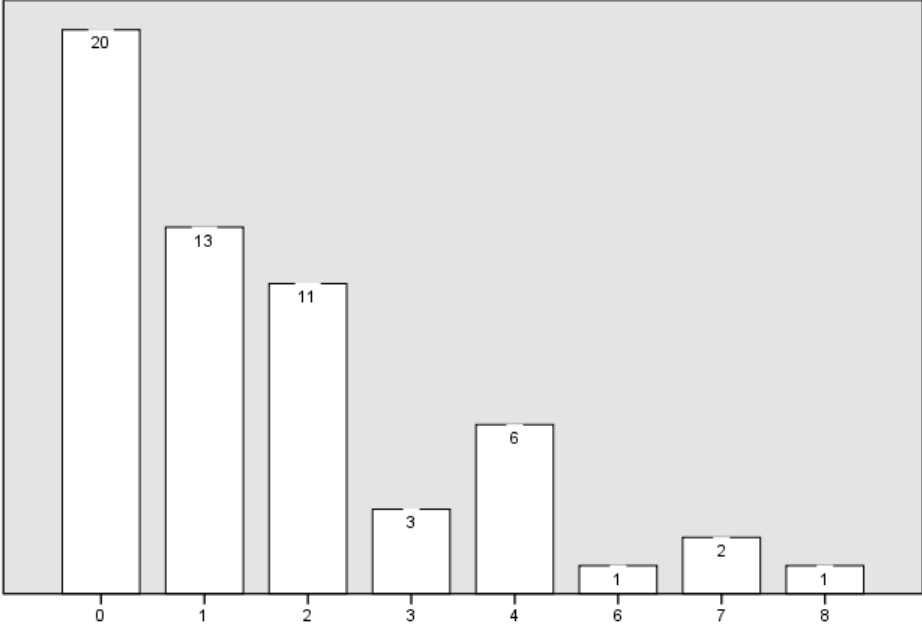
**COLORADO MIDWIFERY REGISTRATION
2016 STATISTICAL SUMMARY**

<p>11. The number of infants referred for medical care on or after 8 days of age and before 6 weeks of age (not including referrals for pediatric checkups):</p>	<p align="center">Q11: # Respondents = 57</p> <div style="text-align: right;"> <ul style="list-style-type: none"> ■ 0 = 54 respondents ■ 1 = 2 respondents ■ 2 = 1 respondent </div>  <p align="center">Exceeds 100% due to rounding</p>
<p>12. The number of perinatal deaths while under the reporting midwife's care.</p> <p>12(a) The number of prenatal fetal deaths occurring prior to the onset of labor:</p>	<p align="center">12a. # of Respondents = 57</p> <div style="text-align: right;"> <ul style="list-style-type: none"> ■ 0 = 54 respondents ■ 1 = 3 respondents </div> 

**COLORADO MIDWIFERY REGISTRATION
2016 STATISTICAL SUMMARY**

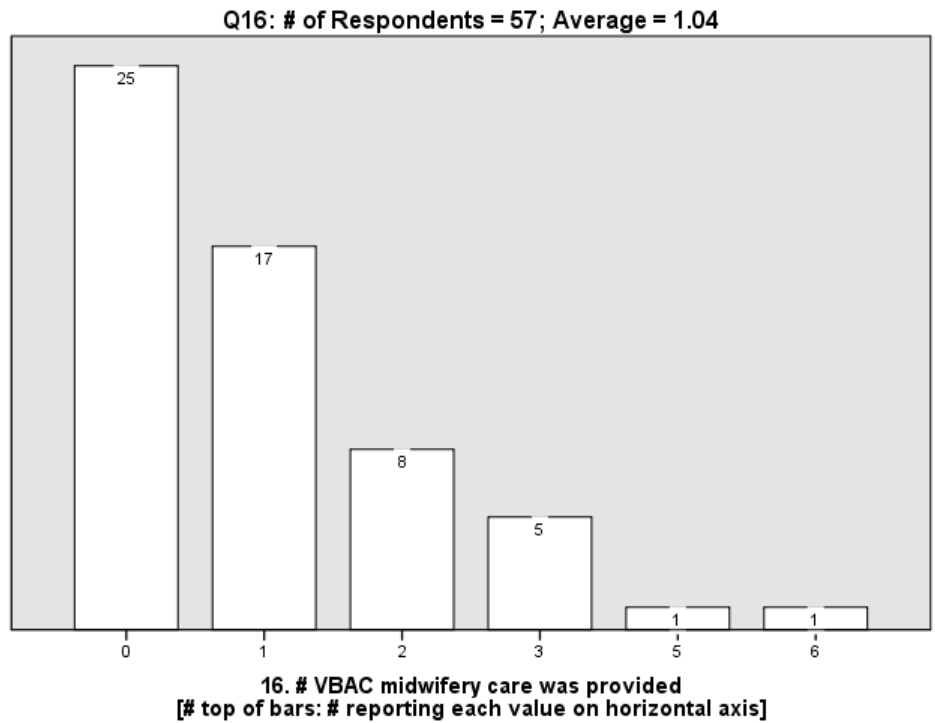
<p>12(b) The number of intrapartum fetal deaths occurring after the onset of labor but before birth:</p>	<p align="center">12b: # Respondents = 57</p> <p align="right"> ■ 0 = 56 respondents ■ 1 = 1 respondent </p>  <table border="1"> <caption>Data for 12b</caption> <thead> <tr> <th>Response</th> <th>Percentage</th> <th>Number of Respondents</th> </tr> </thead> <tbody> <tr> <td>0</td> <td>98%</td> <td>56</td> </tr> <tr> <td>1</td> <td>2%</td> <td>1</td> </tr> </tbody> </table>	Response	Percentage	Number of Respondents	0	98%	56	1	2%	1
Response	Percentage	Number of Respondents								
0	98%	56								
1	2%	1								
<p>12(c) The number of postpartum infant deaths occurring after birth and prior to the 28th day of life:</p>	<ul style="list-style-type: none"> All Respondents Reported "0" (Zero); TOTAL # Respondents = 57 									
<p>13. The number of perinatal deaths after transfer of care to a medical professional.</p> <p>13(a) The number of prenatal fetal deaths prior to the onset of labor:</p>	<p align="center">Q13a: # Respondents = 57</p> <p align="right"> ■ 0 = 55 respondents ■ 1 = 2 respondents </p>  <table border="1"> <caption>Data for Q13a</caption> <thead> <tr> <th>Response</th> <th>Percentage</th> <th>Number of Respondents</th> </tr> </thead> <tbody> <tr> <td>0</td> <td>96%</td> <td>55</td> </tr> <tr> <td>1</td> <td>4%</td> <td>2</td> </tr> </tbody> </table>	Response	Percentage	Number of Respondents	0	96%	55	1	4%	2
Response	Percentage	Number of Respondents								
0	96%	55								
1	4%	2								

**COLORADO MIDWIFERY REGISTRATION
2016 STATISTICAL SUMMARY**

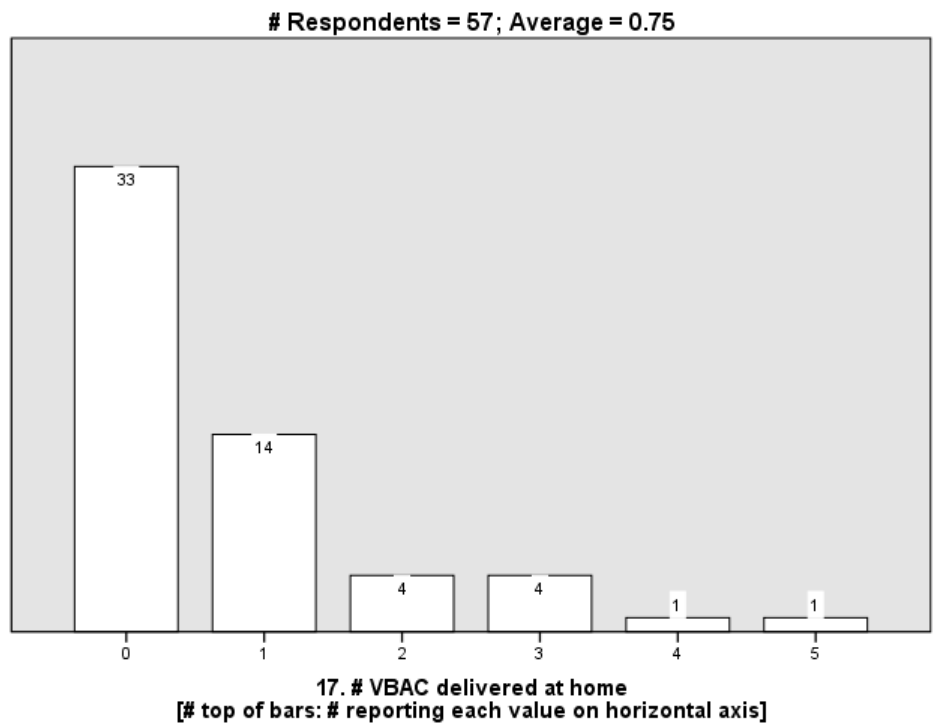
<p>13(b) The number of intrapartum fetal deaths occurring after the onset of labor but before birth:</p>	<ul style="list-style-type: none"> • All Respondents Reported “0” (Zero); TOTAL # Respondents = 57 																		
<p>13(c) The number of postpartum infant deaths occurring after birth and prior to the 28th day of life:</p>	<ul style="list-style-type: none"> • All Respondents Reported “0” (Zero); TOTAL # Respondents = 57 																		
<p>14. The number of women who experienced a perineal laceration severe enough to require repair, whether or not the laceration was repaired:</p>	<p align="center"># Respondents = 57; Average = 1.68</p>  <table border="1"> <caption>Data for Figure 14: # perineal laceration severe enough to require repair</caption> <thead> <tr> <th>Number of Lacerations</th> <th>Number of Respondents</th> </tr> </thead> <tbody> <tr><td>0</td><td>20</td></tr> <tr><td>1</td><td>13</td></tr> <tr><td>2</td><td>11</td></tr> <tr><td>3</td><td>3</td></tr> <tr><td>4</td><td>6</td></tr> <tr><td>6</td><td>1</td></tr> <tr><td>7</td><td>2</td></tr> <tr><td>8</td><td>1</td></tr> </tbody> </table> <p align="center">14. # perineal laceration severe enough to require repair [# top of bars: # reporting each value on horizontal axis]</p>	Number of Lacerations	Number of Respondents	0	20	1	13	2	11	3	3	4	6	6	1	7	2	8	1
Number of Lacerations	Number of Respondents																		
0	20																		
1	13																		
2	11																		
3	3																		
4	6																		
6	1																		
7	2																		
8	1																		
<p>15. The number of maternal deaths:</p>	<ul style="list-style-type: none"> • All Respondents Reported “0” (Zero); TOTAL # Respondents = 57 																		

**COLORADO MIDWIFERY REGISTRATION
2016 STATISTICAL SUMMARY**

16. The number of VBAC women to whom midwifery care was provided:



17. The number of VBAC women who delivered at home:

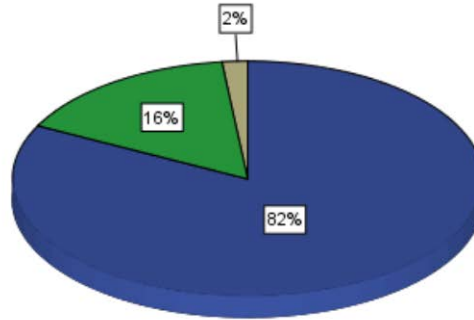


**COLORADO MIDWIFERY REGISTRATION
2016 STATISTICAL SUMMARY**

18. The number of VBAC women transferred during labor and/or delivery:

Q18: # Respondents = 57

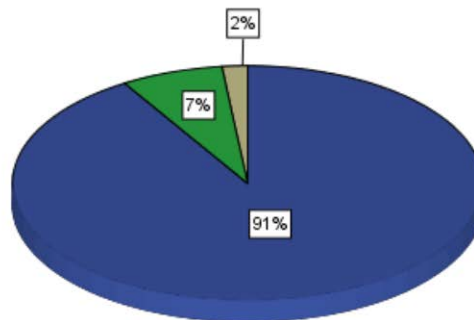
0 = 47 respondents
1 = 9 respondents
2 = 1 respondent



19. The number of VBAC women who birthed vaginally in hospital:

Q19: # Respondents = 57

0 = 52 respondents
1 = 4 respondents
2 = 1 respondent



**COLORADO MIDWIFERY REGISTRATION
2016 STATISTICAL SUMMARY**

<p>20. The number of VBAC women planning a homebirth where a uterine rupture occurred:</p>	<ul style="list-style-type: none">• All Respondents Reported “0” (Zero); TOTAL # Respondents = 57
--	--