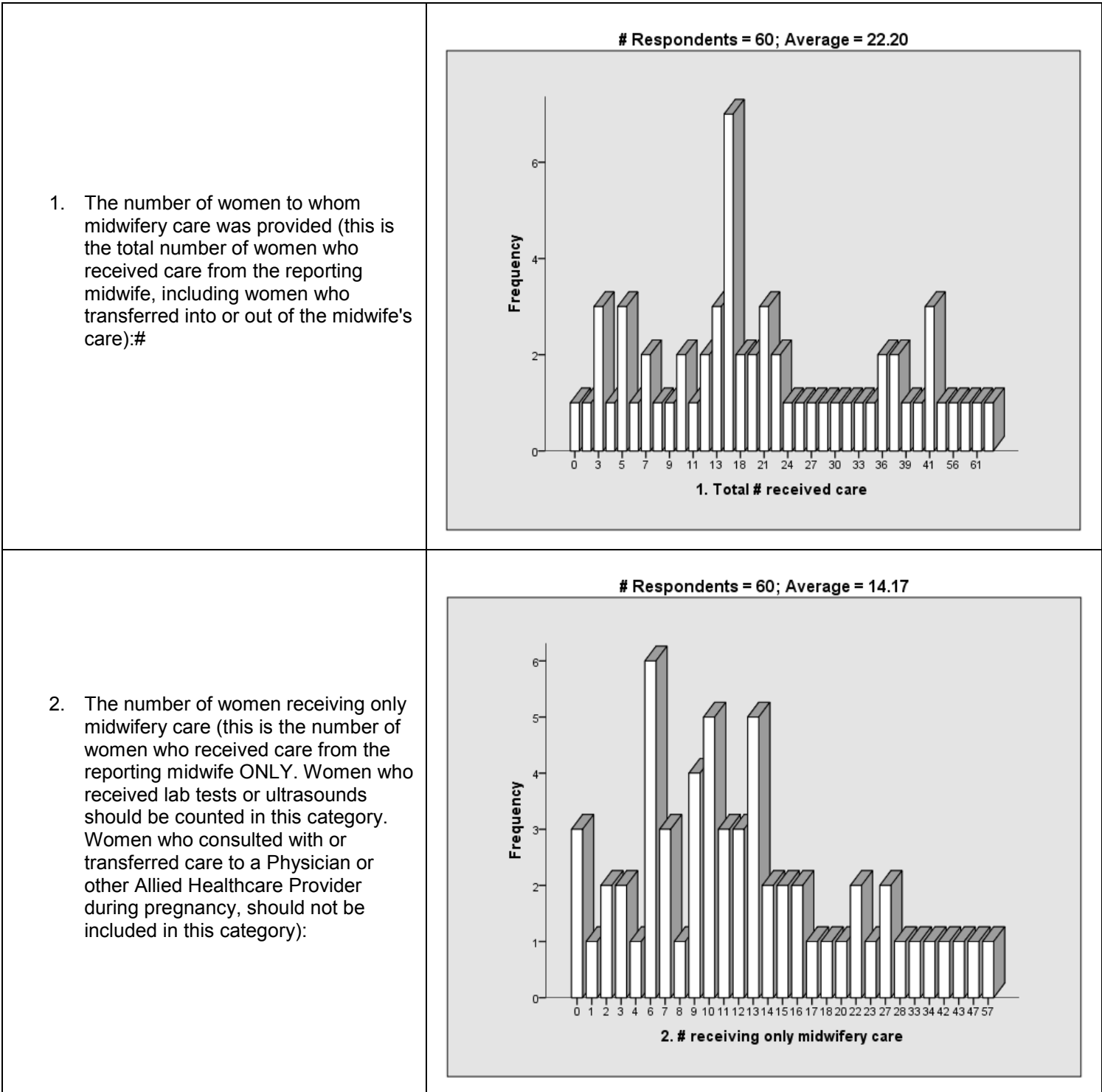


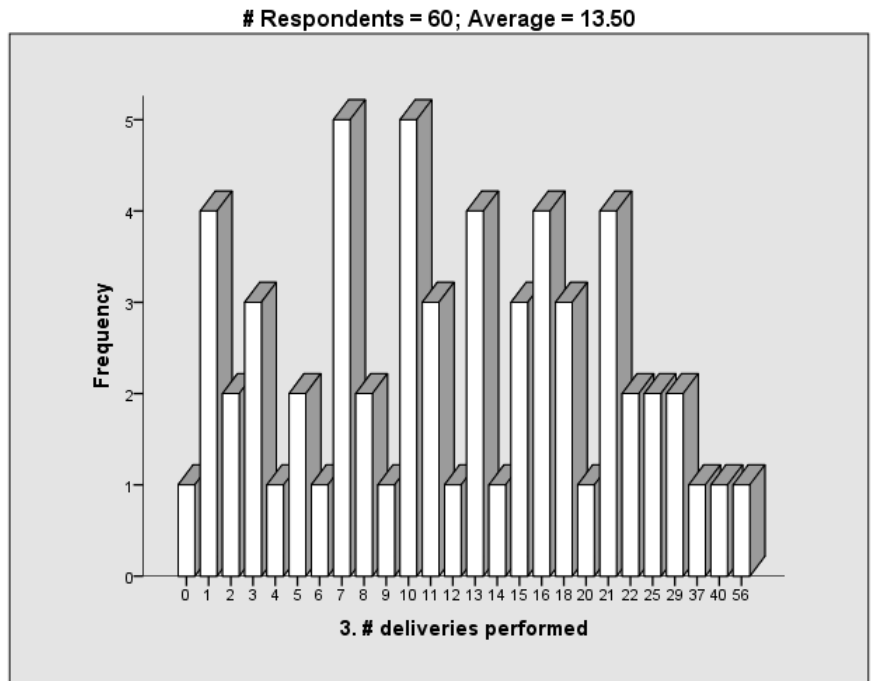
COLORADO MIDWIFERY REGISTRATION 2015 STATISTICAL SUMMARY

Registered Direct-Entry Midwives answered the following questions by submitting their data during the 2015 renewal cycle. Respondents entered a value of “0” if their answer to any question was “zero”.



COLORADO MIDWIFERY REGISTRATION 2015 STATISTICAL SUMMARY

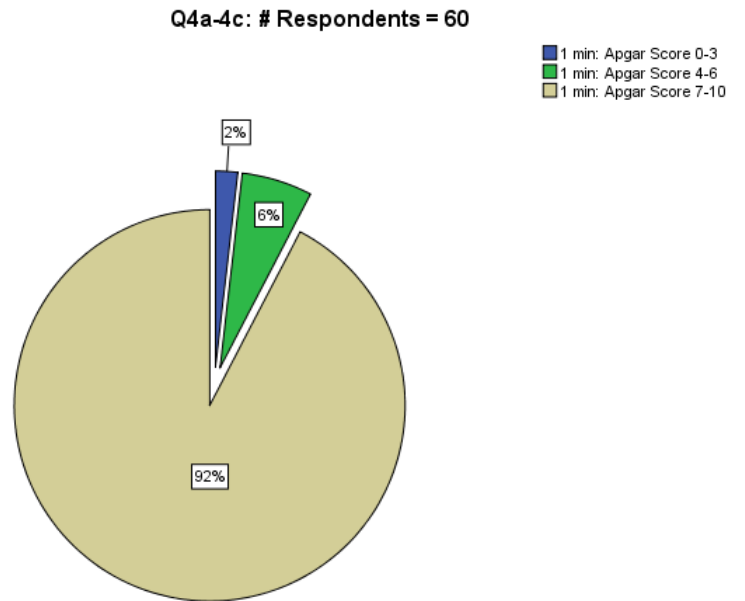
3. The number of deliveries performed (total number of planned homebirth deliveries managed by the reporting midwife):



4a.–4c. The number of infants delivered by the reporting midwife, in the following Apgar score groupings (insert answers below):

ONE Minute

- 0–3
- 4–6
- 7–10



**COLORADO MIDWIFERY REGISTRATION
2015 STATISTICAL SUMMARY**

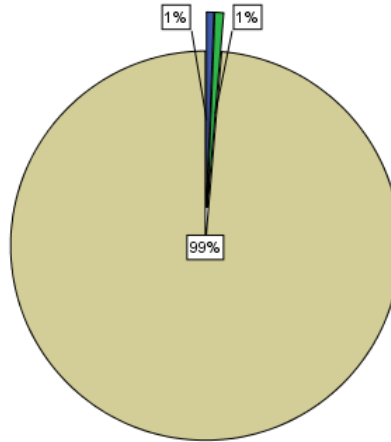
4d.–4f. The number of infants delivered by the reporting midwife, in the following Apgar score groupings (insert answers below):

FIVE Minutes

- 0–3
- 4–6
- 7–10

Q4d-4f: # Respondents = 60

■ 5 min: Apgar Score 0-3
 ■ 5 min: Apgar Score 4-6
 ■ 5 min: Apgar Score 7-10



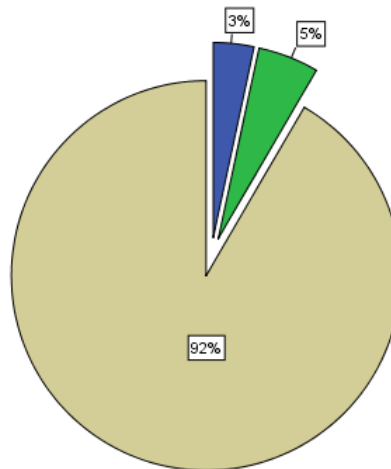
5a.–5c. If available, the number of infants delivered in the hospital after transfer, in the following Apgar score groupings (insert answers below):

ONE Minute

- 0–3
- 4–6
- 7–10

Q5a-5c: # Respondents = 60

■ 1 min: Apgar Score 0-3
 ■ 1 min: Apgar Score 4-6
 ■ 1 min: Apgar Score 7-10



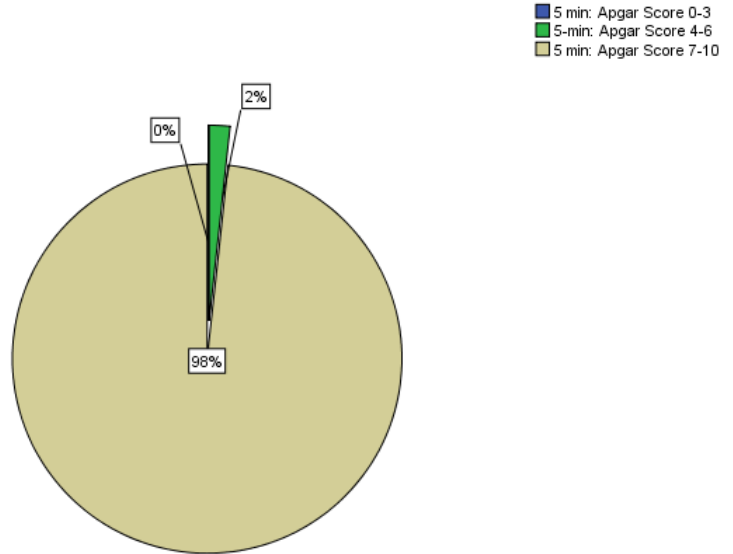
COLORADO MIDWIFERY REGISTRATION 2015 STATISTICAL SUMMARY

5d.–5f. If available, the number of infants delivered in the hospital after transfer, in the following Apgar score groupings (insert answers below):

FIVE Minutes

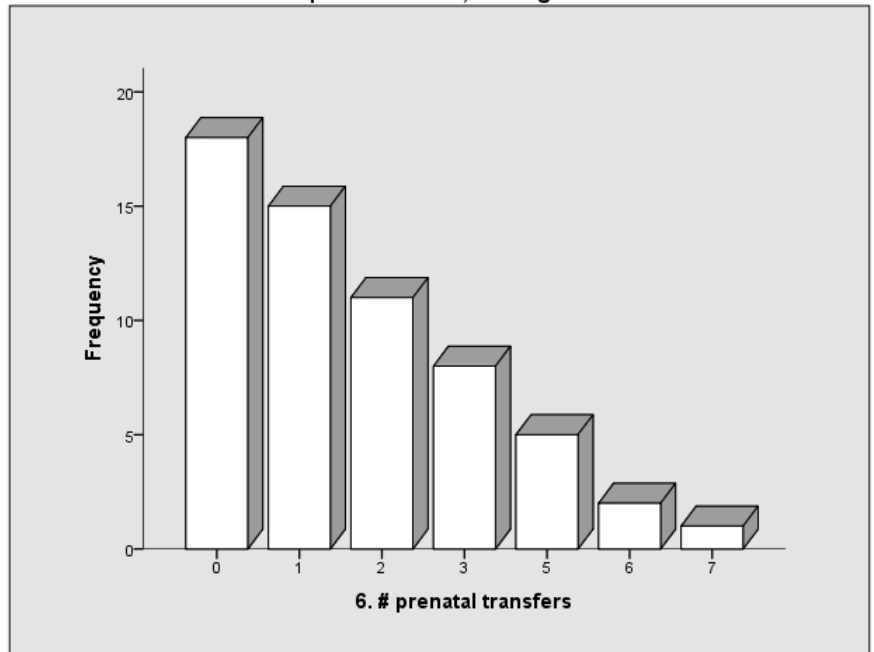
- 0–3
- 4–6
- 7–10

Q5d-5f: # Respondents = 60



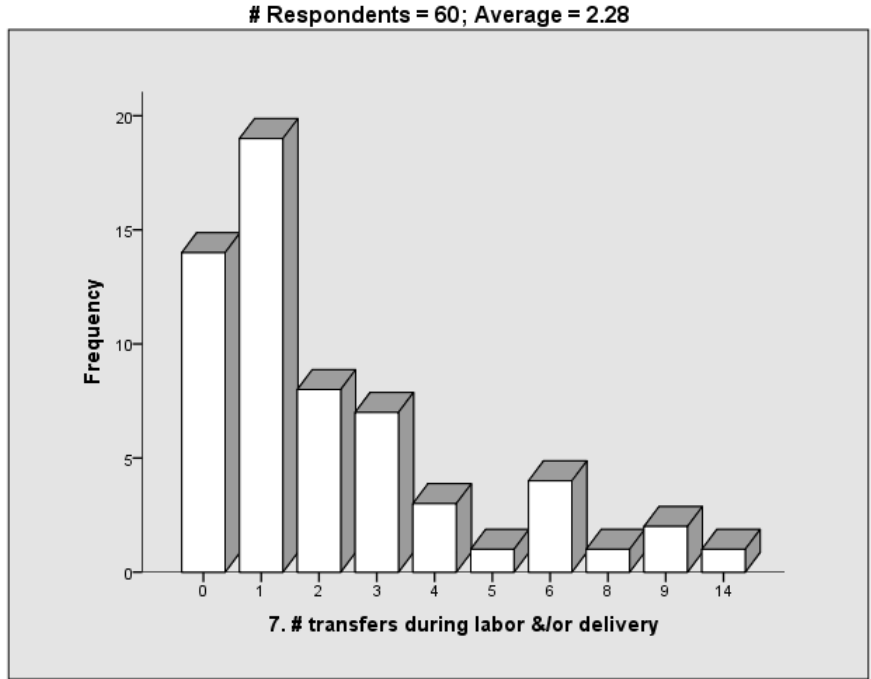
6. The number of prenatal transfers (total number of women transferred out of midwifery into physician care prior to birth):

Respondents = 60; Average = 1.75

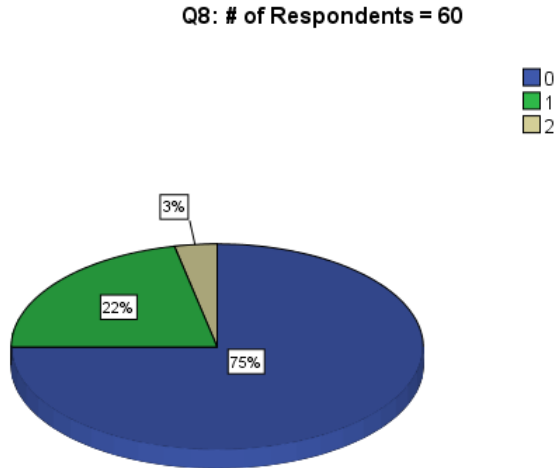


**COLORADO MIDWIFERY REGISTRATION
2015 STATISTICAL SUMMARY**

7. The number of transfers during labor and/or delivery (total number of women who transferred from a planned homebirth into physician care after the onset of labor has been identified):



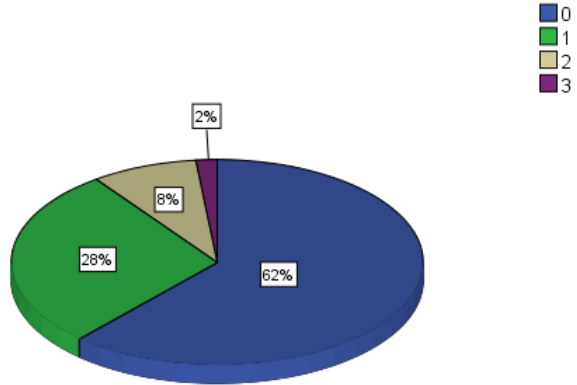
8. The number of transferred **mothers** immediately following birth within the first 24 hours (total number of women transferred into physician care within the first 24 hours after a planned homebirth):



**COLORADO MIDWIFERY REGISTRATION
2015 STATISTICAL SUMMARY**

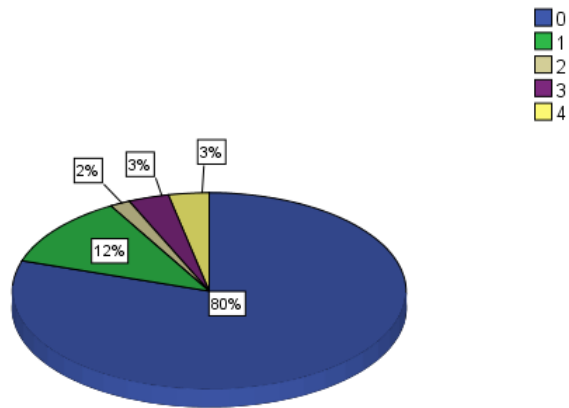
9. The number of infants referred for medical care after 24 hours of age and before 8 days of age (not including referrals for pediatric checkups):

Q9: # Respondents = 60



10. The number of infants referred for medical care on or after 8 days of age and before 6 weeks of age (not including referrals for pediatric checkups):

Q10: # Respondents = 60

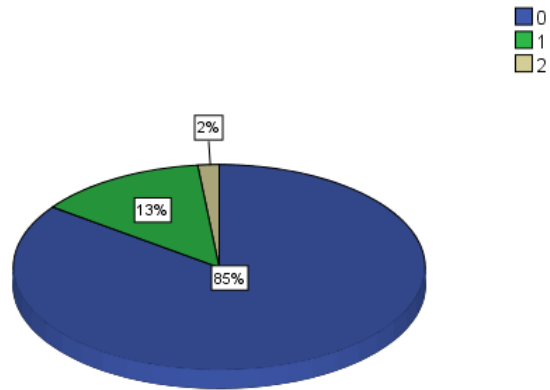


**COLORADO MIDWIFERY REGISTRATION
2015 STATISTICAL SUMMARY**

11. The number of perinatal deaths while under the reporting midwife's care.

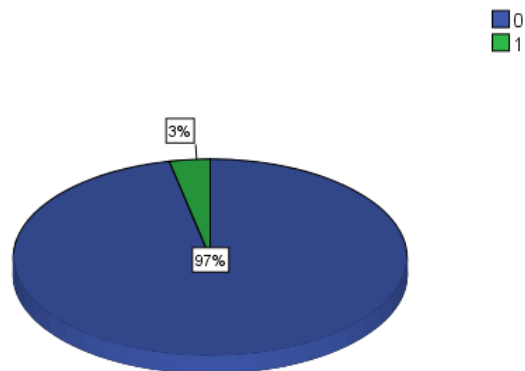
(a) The number of prenatal fetal deaths occurring prior to the onset of labor:

Q11a. # Respondents = 60



(b) The number of intrapartum fetal deaths occurring after the onset of labor but before birth:

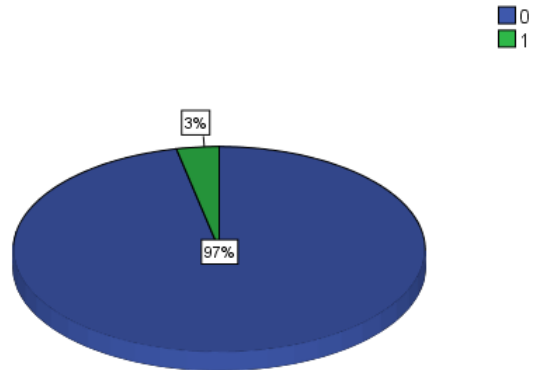
Q11b: # Respondents = 60



**COLORADO MIDWIFERY REGISTRATION
2015 STATISTICAL SUMMARY**

(c) The number of postpartum infant deaths occurring after birth and prior to the 28th day of life:

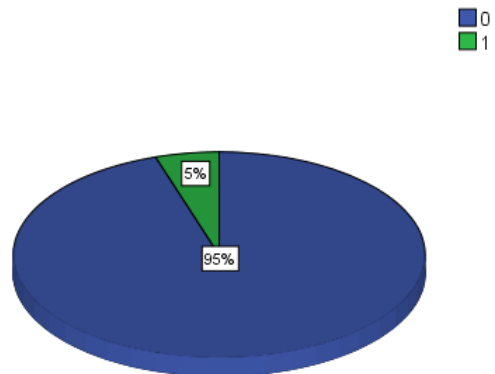
Q11c. # Respondents = 60



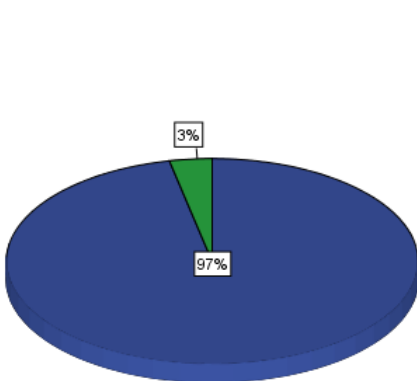
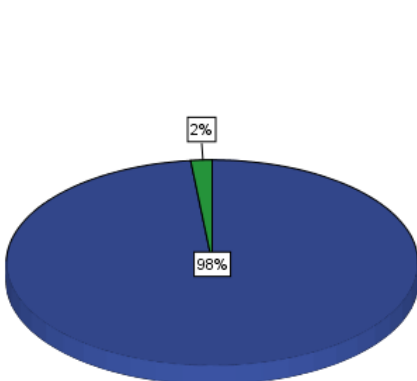
12. The number of perinatal deaths after transfer of care to a medical professional.

(a) The number of prenatal fetal deaths occurring prior to the onset of labor:

Q12a. # Respondents = 60

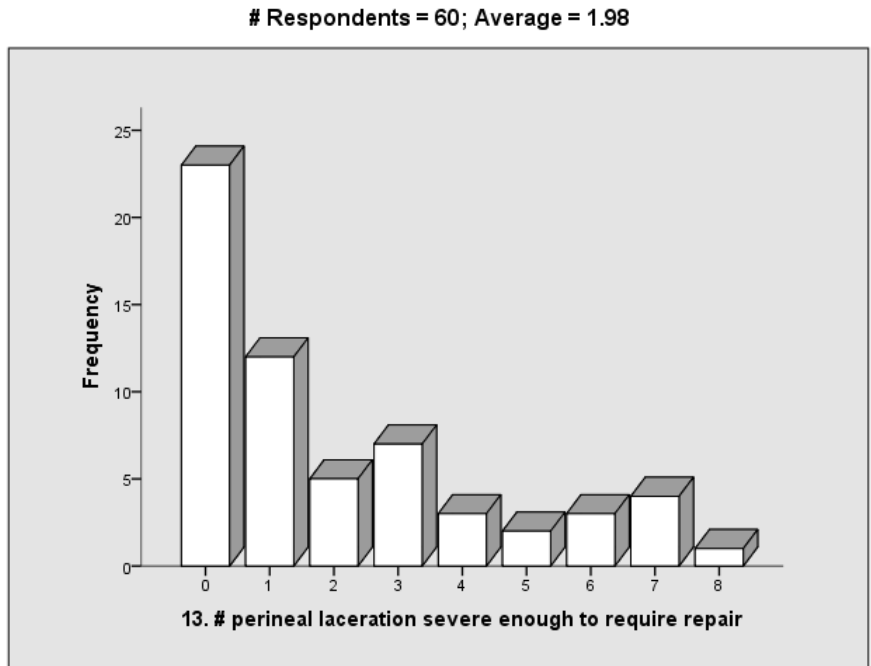


**COLORADO MIDWIFERY REGISTRATION
2015 STATISTICAL SUMMARY**

<p>(b) The number of intrapartum fetal deaths occurring after the onset of labor but before birth:</p>	<p>Q12b. # Respondents = 60</p>  <p>A 3D pie chart showing the distribution of responses for Q12b. The chart is divided into two segments: a large blue segment representing 97% (0 deaths) and a small green segment representing 3% (1 death). A legend in the top right corner shows a blue square for '0' and a green square for '1'.</p> <table border="1"><thead><tr><th>Response</th><th>Percentage</th></tr></thead><tbody><tr><td>0</td><td>97%</td></tr><tr><td>1</td><td>3%</td></tr></tbody></table>	Response	Percentage	0	97%	1	3%
Response	Percentage						
0	97%						
1	3%						
<p>(c) The number of postpartum infant deaths occurring after birth and prior to the 28th day of life:</p>	<p>Q12c. # Respondents = 60</p>  <p>A 3D pie chart showing the distribution of responses for Q12c. The chart is divided into two segments: a large blue segment representing 98% (0 deaths) and a small green segment representing 2% (1 death). A legend in the top right corner shows a blue square for '0' and a green square for '1'.</p> <table border="1"><thead><tr><th>Response</th><th>Percentage</th></tr></thead><tbody><tr><td>0</td><td>98%</td></tr><tr><td>1</td><td>2%</td></tr></tbody></table>	Response	Percentage	0	98%	1	2%
Response	Percentage						
0	98%						
1	2%						

**COLORADO MIDWIFERY REGISTRATION
2015 STATISTICAL SUMMARY**

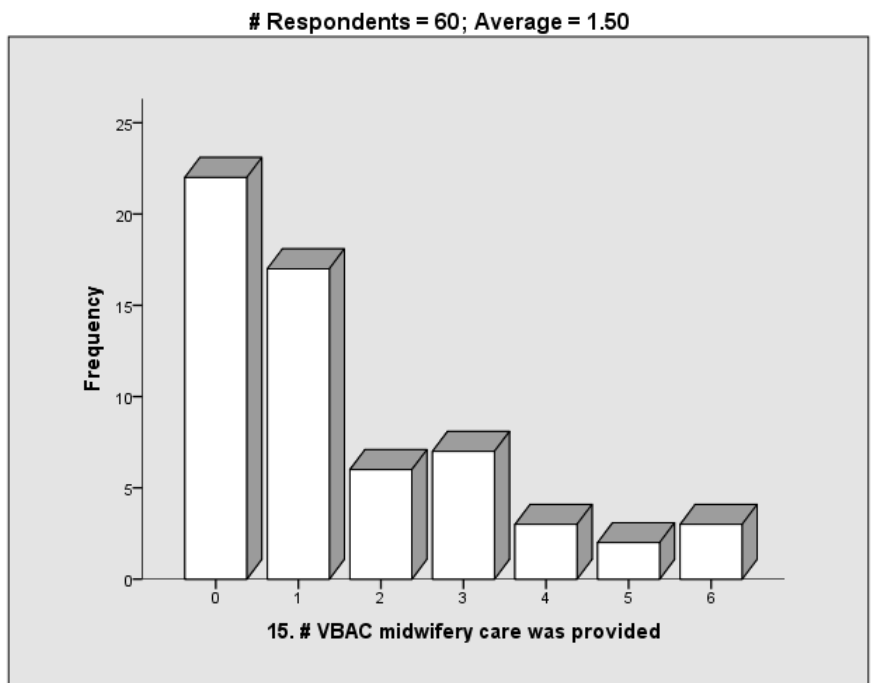
13. The number of women who experienced a perineal laceration severe enough to require repair, whether or not the laceration was repaired:



14. The number of maternal deaths:

- **All Respondents Reported "0" (Zero); TOTAL # = 60**

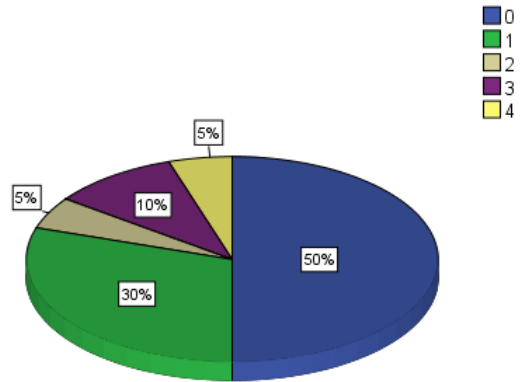
15. The number of VBAC women to whom midwifery care was provided:



**COLORADO MIDWIFERY REGISTRATION
2015 STATISTICAL SUMMARY**

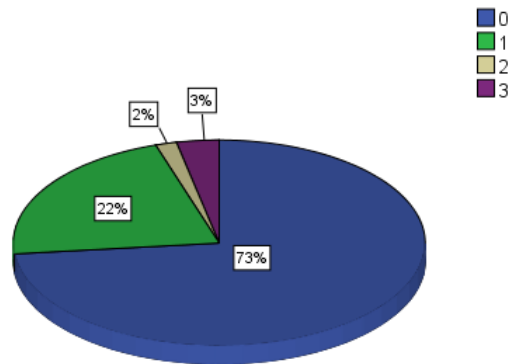
16. The number of VBAC women who delivered at home:

Q16. # Respondents = 60



17. The number of VBAC women transferred during labor and/or delivery:

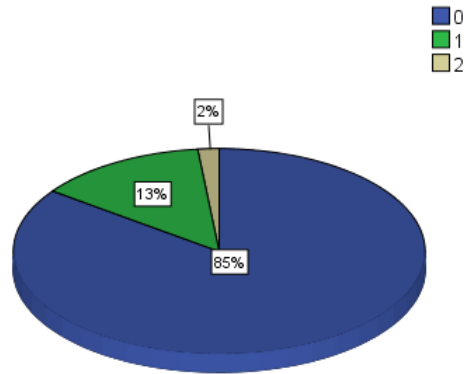
Q17. # Respondents = 60



**COLORADO MIDWIFERY REGISTRATION
2015 STATISTICAL SUMMARY**

18. The number of VBAC women who birthed vaginally in hospital:

Q18. # Respondents = 60



19. The number of uterine ruptures occurring in VBAC women planning a homebirth:

- **All Respondents Reported "0" (Zero); TOTAL # = 60**