

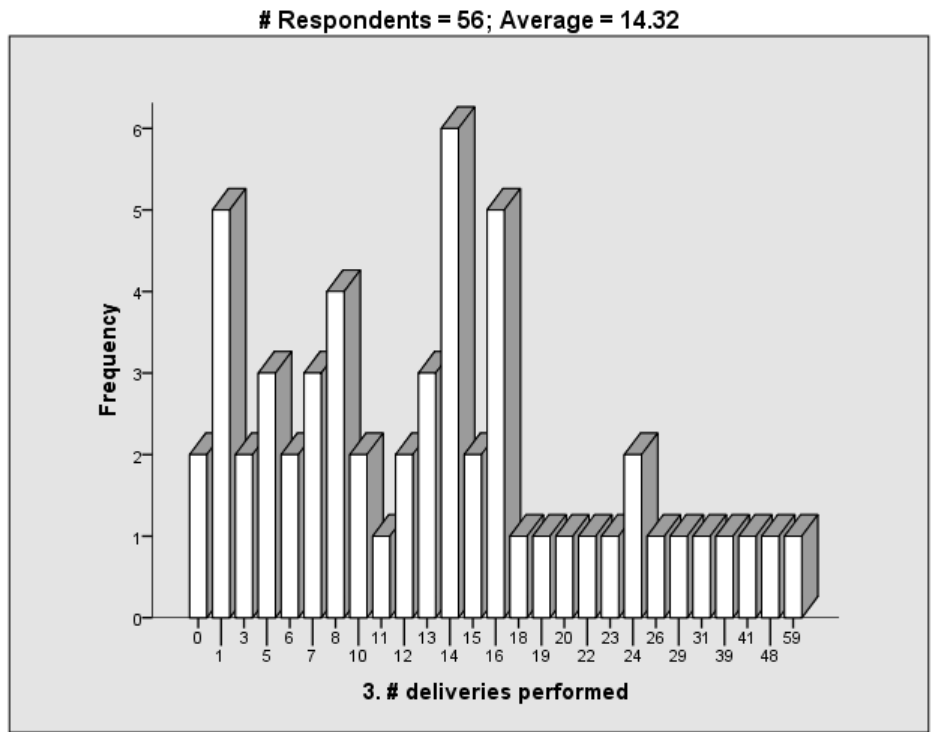
COLORADO MIDWIFERY REGISTRATION 2014 STATISTICAL SUMMARY

Registered Direct-Entry Midwives answered the following questions by submitting their data during the 2014 renewal cycle. Respondents entered a value of “0” if their answer to any question was “zero”.

<p>1. The number of women to whom midwifery care was provided (this is the total number of women who received care from the reporting midwife, including women who transferred into or out of the midwife's care):#</p>	<p style="text-align: center;"># Respondents = 56; Average = 22.41</p> <p style="text-align: center;">1. Total # received care</p>
<p>2. The number of women receiving only midwifery care (this is the number of women who received care from the reporting midwife ONLY. Women who received lab tests or ultrasounds should be counted in this category. Women who consulted with or transferred care to a Physician or other Allied Healthcare Provider during pregnancy, should not be included in this category):</p>	<p style="text-align: center;"># Respondents = 56; Average = 16.20</p> <p style="text-align: center;">2. # receiving only midwifery care</p>

COLORADO MIDWIFERY REGISTRATION 2014 STATISTICAL SUMMARY

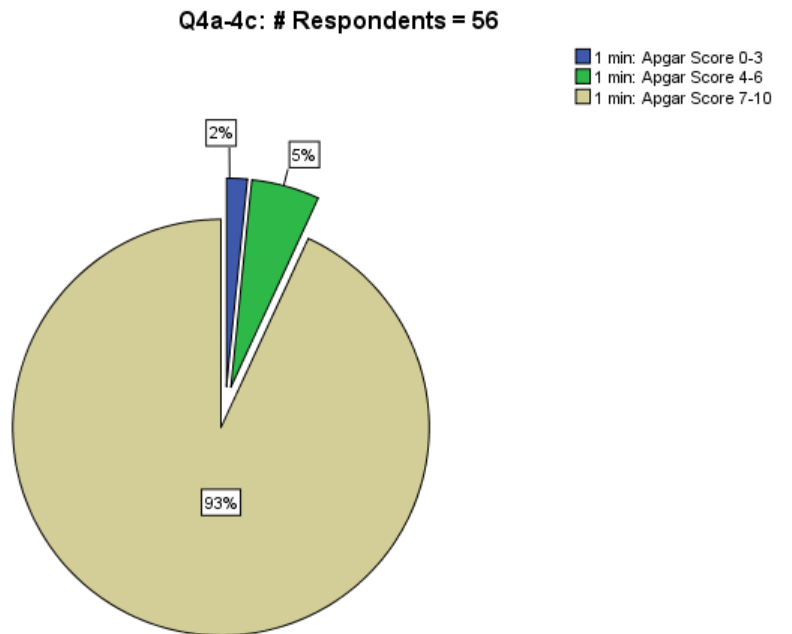
3. The number of deliveries performed (total number of planned homebirth deliveries managed by the reporting midwife):



4a.–4c. The number of infants delivered by the reporting midwife, in the following Apgar score groupings (insert answers below):

ONE Minute

- 0–3
- 4–6
- 7–10



**COLORADO MIDWIFERY REGISTRATION
2014 STATISTICAL SUMMARY**

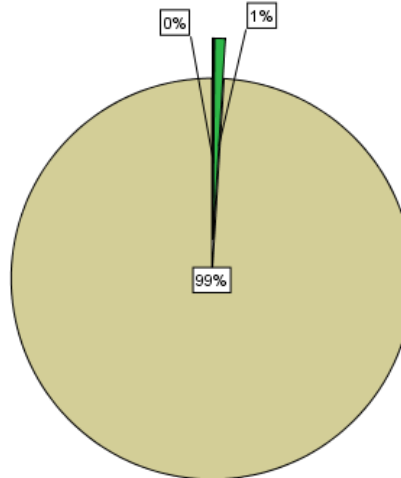
4d.–4f. The number of infants delivered by the reporting midwife, in the following Apgar score groupings (insert answers below):

FIVE Minutes

- 0–3
- 4–6
- 7–10

Q4d-4f: # Respondents = 56

■ 5 min: Apgar Score 0-3
 ■ 5 min: Apgar Score 4-6
 ■ 5 min: Apgar Scores 7-10



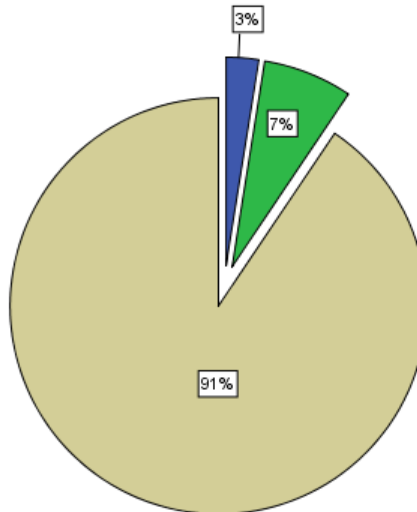
5a.–5c. If available, the number of infants delivered in the hospital after transfer, in the following Apgar score groupings (insert answers below):

ONE Minute

- 0–3
- 4–6
- 7–10

Q5a-5c: # Respondents = 56

■ 1 min: Apgar Score 0-3
 ■ 1 min: Apgar Score 4-6
 ■ 1 min: Apgar Score 7-10



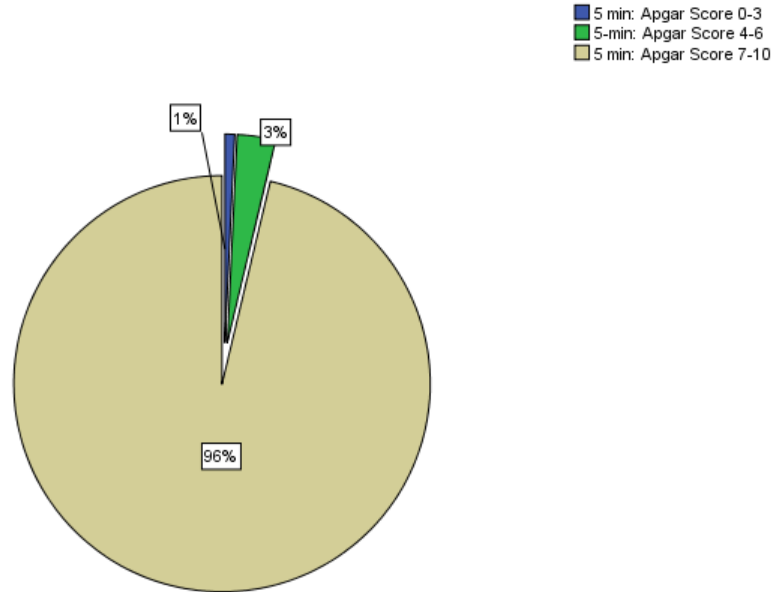
**COLORADO MIDWIFERY REGISTRATION
2014 STATISTICAL SUMMARY**

5d.–5f. If available, the number of infants delivered in the hospital after transfer, in the following Apgar score groupings (insert answers below):

FIVE Minutes

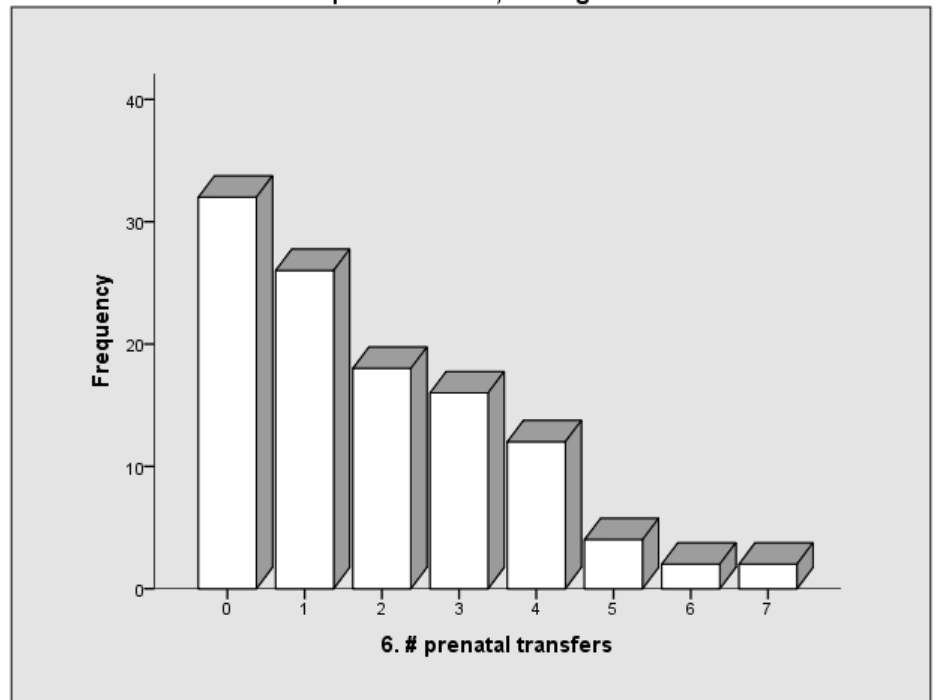
- 0–3
- 4–6
- 7–10

Q5d-5f: # Respondents = 56



6. The number of prenatal transfers (total number of women transferred out of midwifery into physician care prior to birth):

Respondents = 56; Average = 1.82

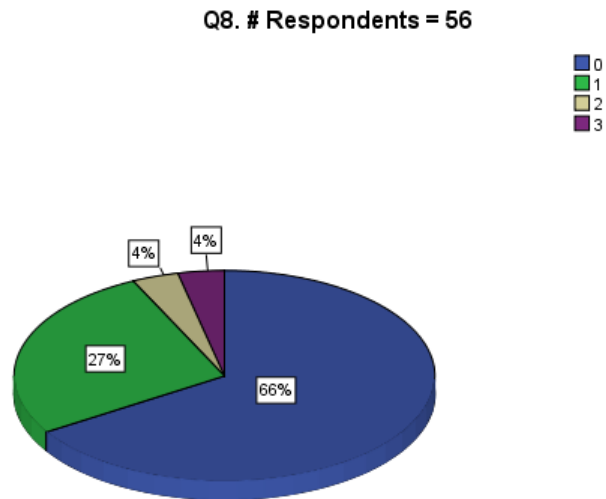


**COLORADO MIDWIFERY REGISTRATION
2014 STATISTICAL SUMMARY**

7. The number of transfers during labor and/or delivery (total number of women who transferred from a planned homebirth into physician care after the onset of labor has been identified):



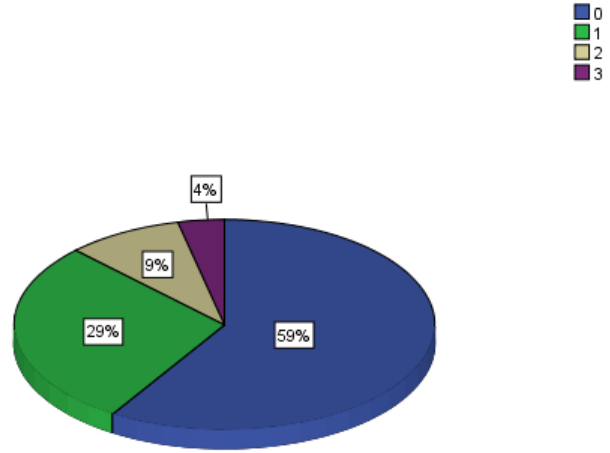
8. The number of transferred **mothers** immediately following birth within the first 24 hours (total number of women transferred into physician care within the first 24 hours after a planned homebirth):



**COLORADO MIDWIFERY REGISTRATION
2014 STATISTICAL SUMMARY**

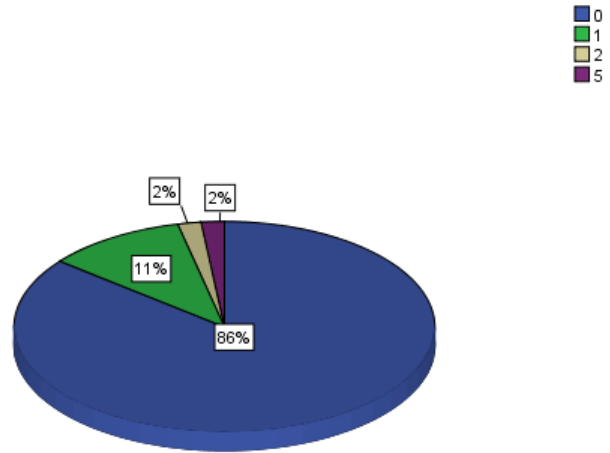
9. The number of infants referred for medical care after 24 hours of age and before 8 days of age (not including referrals for pediatric checkups):

Q9. # Respondents = 56

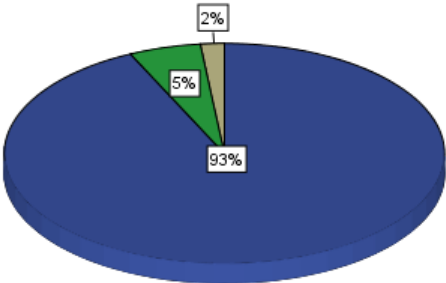
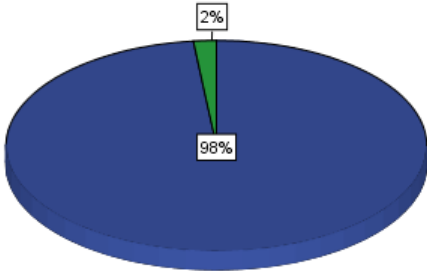


10. The number of infants referred for medical care on or after 8 days of age and before 6 weeks of age (not including referrals for pediatric checkups):

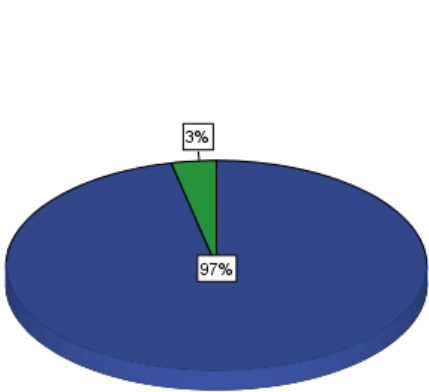
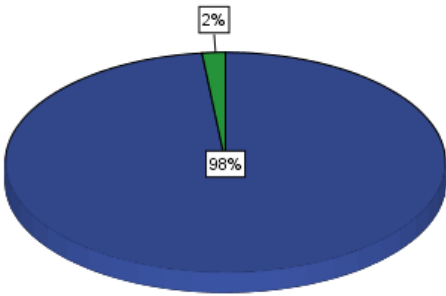
Q10. # Respondents = 56



**COLORADO MIDWIFERY REGISTRATION
2014 STATISTICAL SUMMARY**

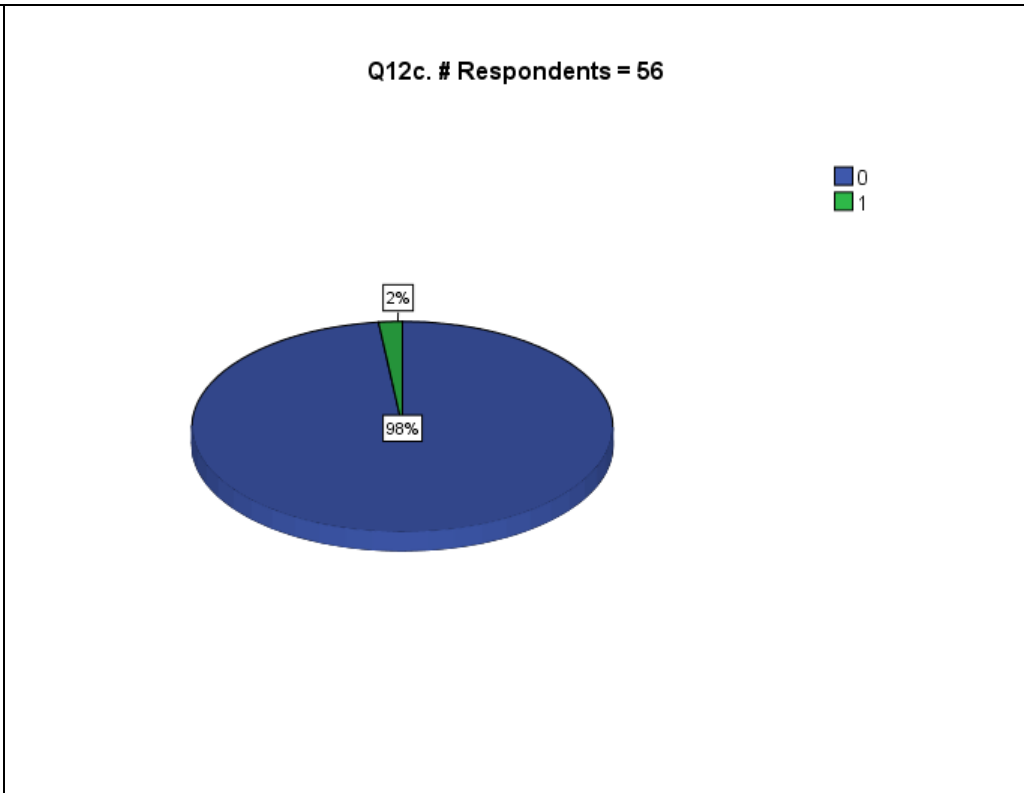
<p>11. The number of perinatal deaths while under the reporting midwife's care. (a) The number of prenatal fetal deaths occurring prior to the onset of labor:</p>	<p>Q11a. # Respondents = 56</p>  <p>A 3D pie chart showing the distribution of responses for Q11a. The chart is divided into three segments: a large blue segment representing 93% (0 deaths), a green segment representing 5% (1 death), and a small tan segment representing 2% (2 deaths). A legend in the top right corner shows three colored squares: blue for 0, green for 1, and tan for 2.</p> <table border="1"><thead><tr><th>Response</th><th>Percentage</th></tr></thead><tbody><tr><td>0</td><td>93%</td></tr><tr><td>1</td><td>5%</td></tr><tr><td>2</td><td>2%</td></tr></tbody></table>	Response	Percentage	0	93%	1	5%	2	2%
Response	Percentage								
0	93%								
1	5%								
2	2%								
<p>(b) The number of intrapartum fetal deaths occurring after the onset of labor but before birth:</p>	<p>Q11b. # Respondents = 56</p>  <p>A 3D pie chart showing the distribution of responses for Q11b. The chart is divided into two segments: a large blue segment representing 98% (0 deaths) and a small green segment representing 2% (1 death). A legend in the top right corner shows two colored squares: blue for 0 and green for 1.</p> <table border="1"><thead><tr><th>Response</th><th>Percentage</th></tr></thead><tbody><tr><td>0</td><td>98%</td></tr><tr><td>1</td><td>2%</td></tr></tbody></table>	Response	Percentage	0	98%	1	2%		
Response	Percentage								
0	98%								
1	2%								

**COLORADO MIDWIFERY REGISTRATION
2014 STATISTICAL SUMMARY**

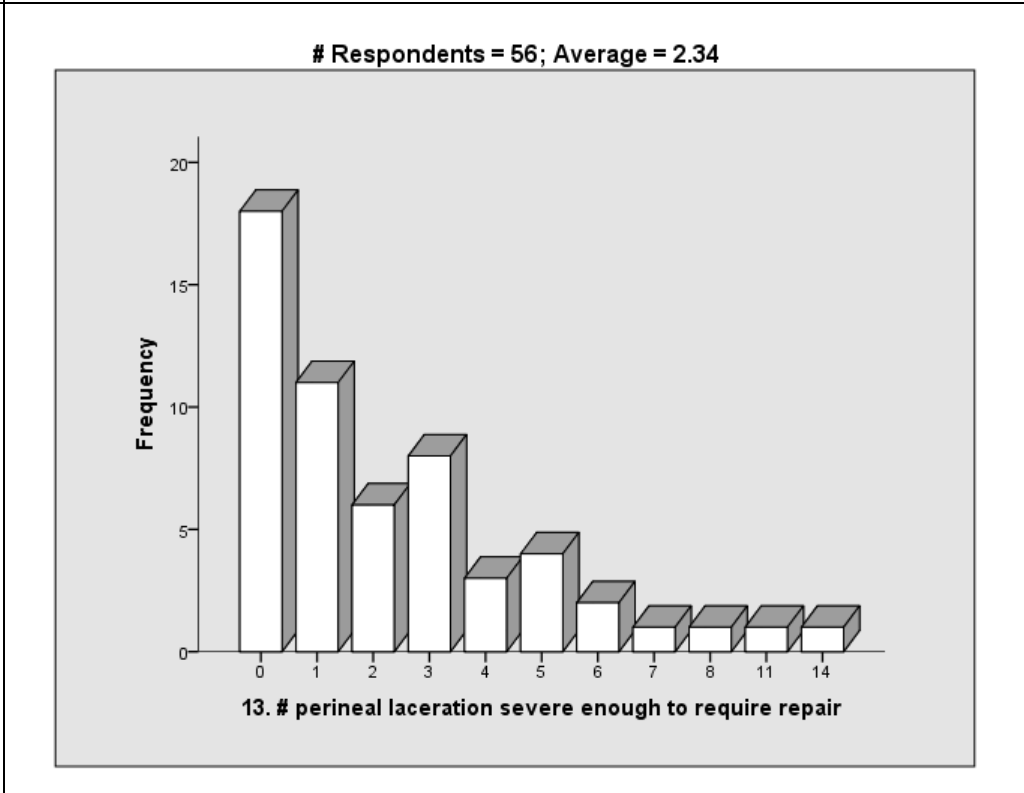
<p>(c) The number of postpartum infant deaths occurring after birth and prior to the 28th day of life:</p>	<p align="center">Q11c. # Respondents = 56</p>  <p>A 3D pie chart showing the distribution of responses for Q11c. The chart is divided into two segments: a large blue segment representing '0' at 97% and a smaller green segment representing '1' at 3%. A legend in the top right corner shows a blue square for '0' and a green square for '1'.</p> <table border="1"> <thead> <tr> <th>Response</th> <th>Percentage</th> </tr> </thead> <tbody> <tr> <td>0</td> <td>97%</td> </tr> <tr> <td>1</td> <td>3%</td> </tr> </tbody> </table>	Response	Percentage	0	97%	1	3%
Response	Percentage						
0	97%						
1	3%						
<p>12. The number of perinatal deaths after transfer of care to a medical professional. (a) The number of prenatal fetal deaths occurring prior to the onset of labor:</p>	<p align="center">Q12a. # Respondents = 56</p>  <p>A 3D pie chart showing the distribution of responses for Q12a. The chart is divided into two segments: a large blue segment representing '0' at 98% and a smaller green segment representing '2' at 2%. A legend in the top right corner shows a blue square for '0' and a green square for '2'.</p> <table border="1"> <thead> <tr> <th>Response</th> <th>Percentage</th> </tr> </thead> <tbody> <tr> <td>0</td> <td>98%</td> </tr> <tr> <td>2</td> <td>2%</td> </tr> </tbody> </table>	Response	Percentage	0	98%	2	2%
Response	Percentage						
0	98%						
2	2%						
<p>(b) The number of intrapartum fetal deaths occurring after the onset of labor but before birth:</p>	<ul style="list-style-type: none"> • All Respondents Reported "0" (Zero); TOTAL # = 56 						

**COLORADO MIDWIFERY REGISTRATION
2014 STATISTICAL SUMMARY**

(c) The number of postpartum infant deaths occurring after birth and prior to the 28th day of life:



13. The number of women who experienced a perineal laceration severe enough to require repair, whether or not the laceration was repaired:

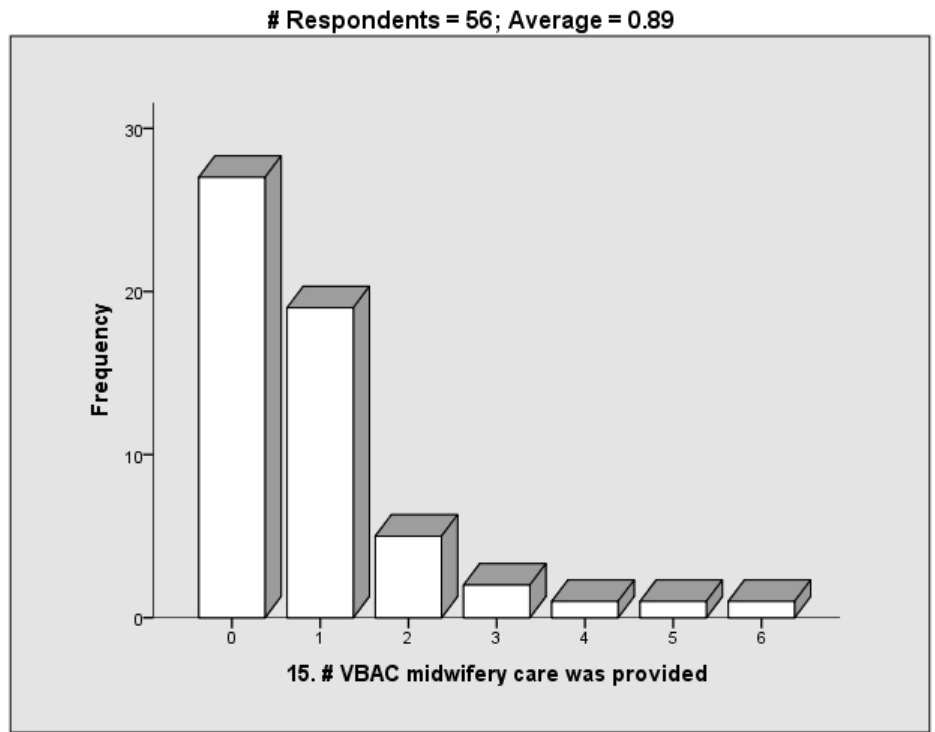


14. The number of maternal deaths:

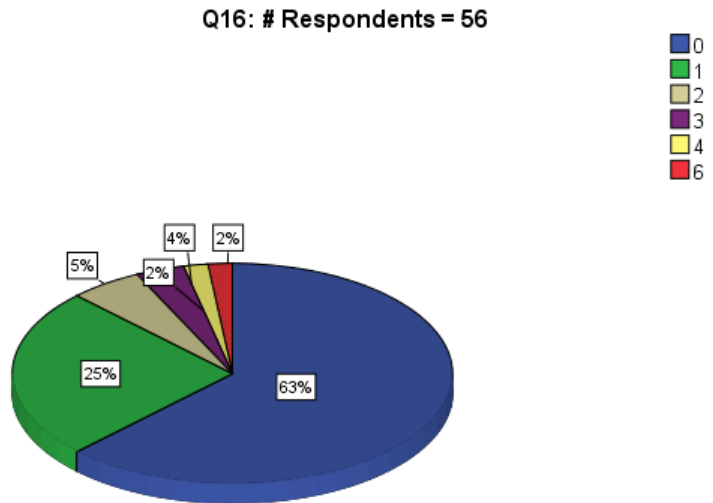
• **All Respondents Reported "0" (Zero); TOTAL # = 56**

**COLORADO MIDWIFERY REGISTRATION
2014 STATISTICAL SUMMARY**

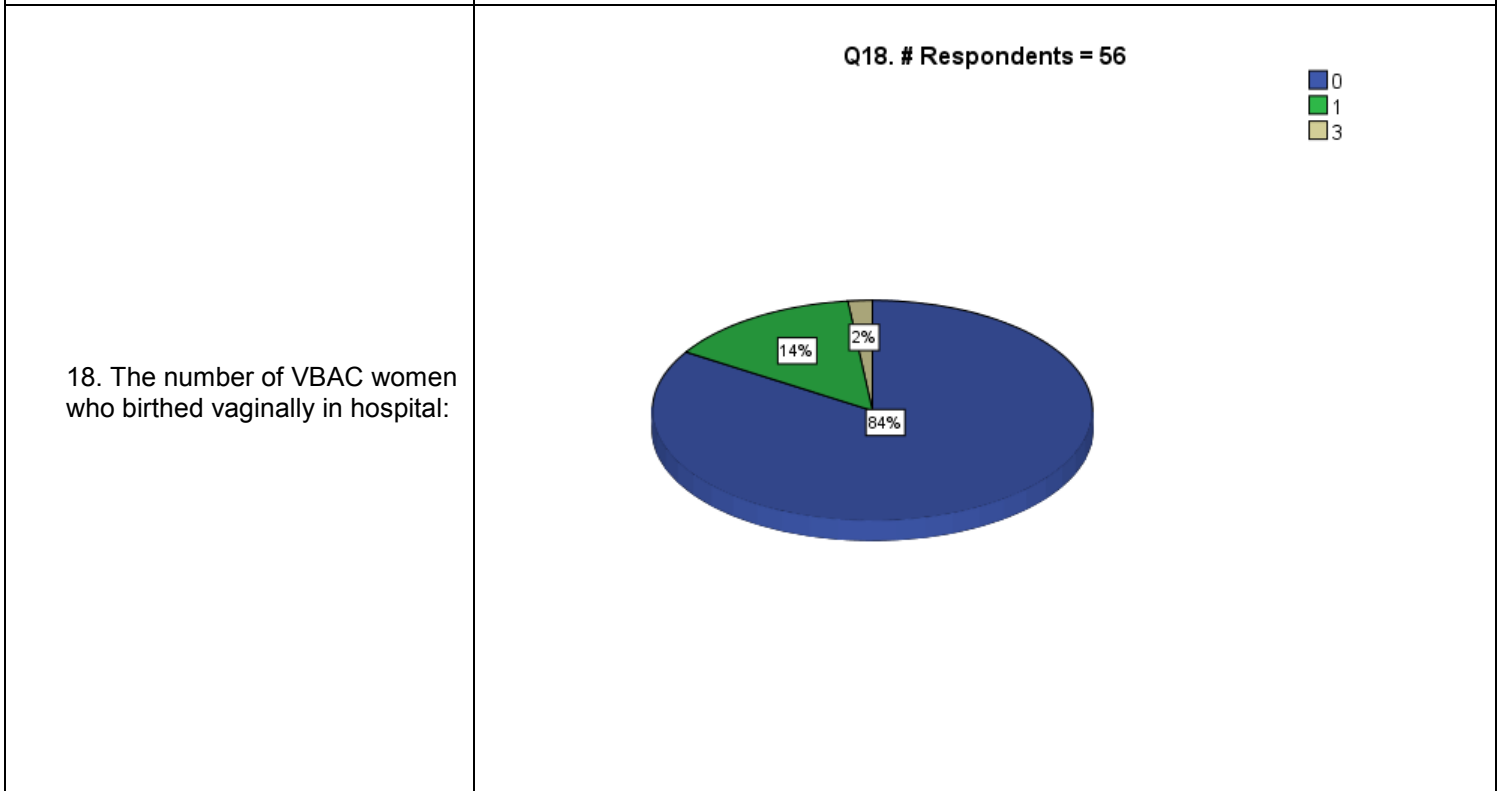
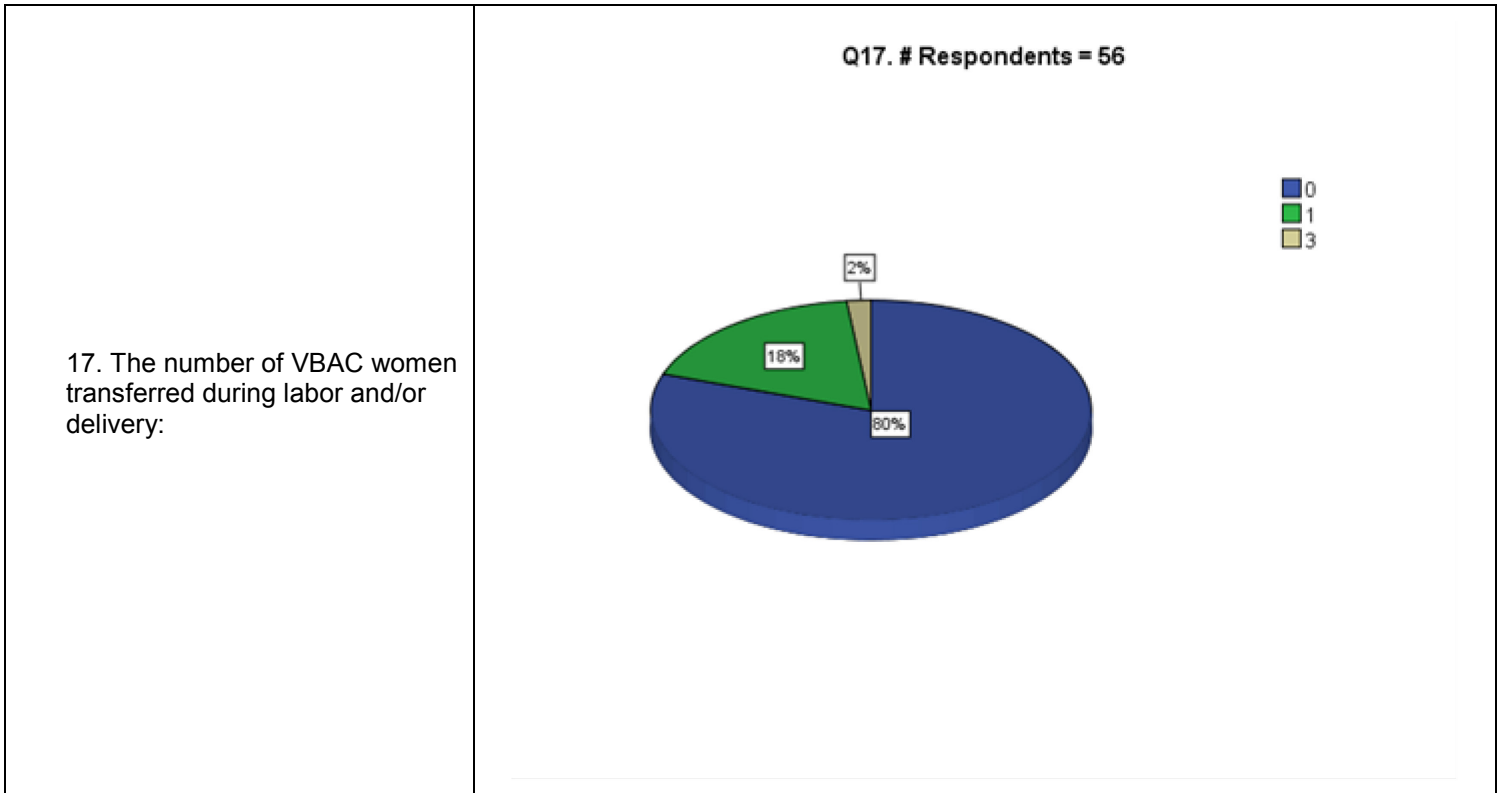
15. The number of VBAC women to whom midwifery care was provided:



16. The number of VBAC women who delivered at home:



**COLORADO MIDWIFERY REGISTRATION
2014 STATISTICAL SUMMARY**



19. The number of uterine ruptures occurring in VBAC women planning a homebirth:

- All Respondents Reported "0" (Zero); TOTAL # = 56