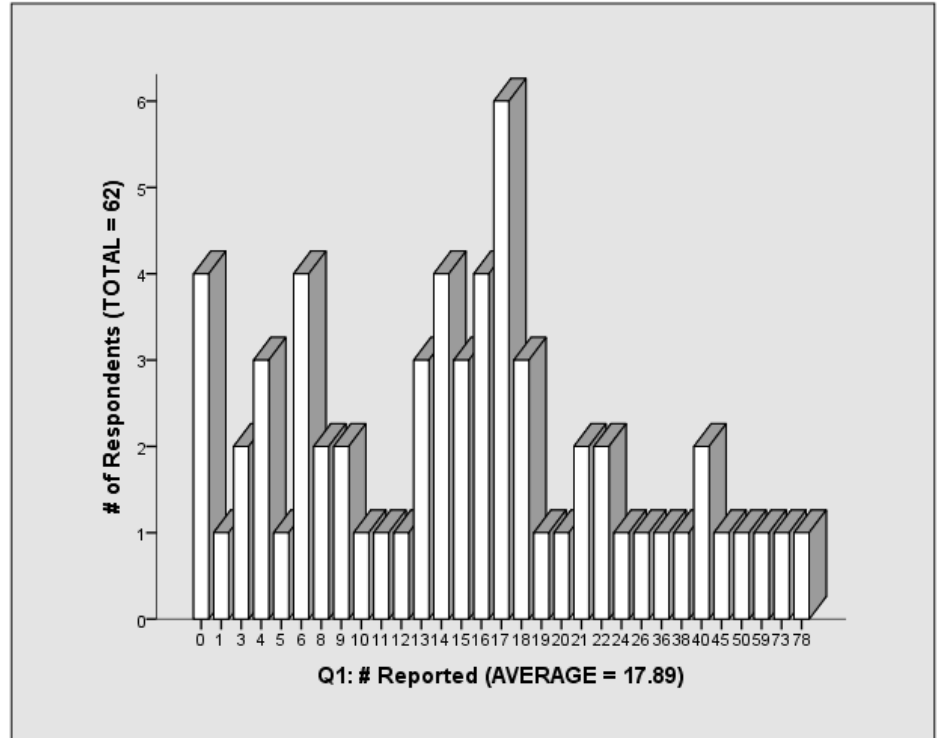


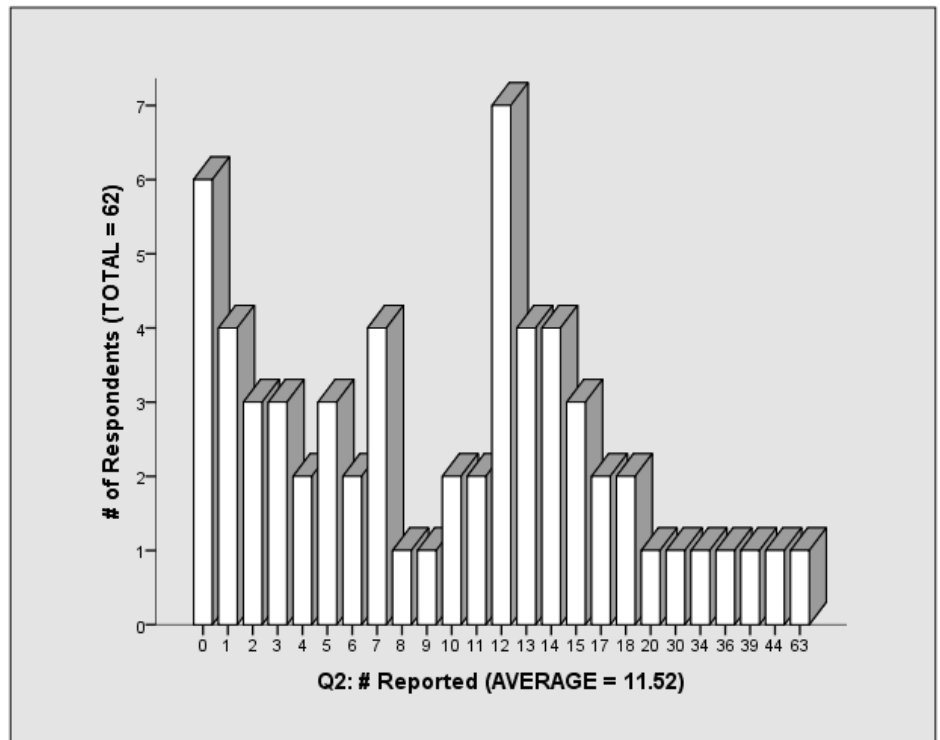
COLORADO MIDWIFERY REGISTRATION 2012 STATISTICAL SUMMARY

Registered Direct-Entry Midwives answered the following questions by submitting their data during the 2012 renewal cycle. Respondents entered a value of “0” if their answer to any question was “zero”.

1. The number of women to whom midwifery care was provided (this is the total number of women who received care from the reporting midwife, including women who transferred into or out of the midwife’s care):

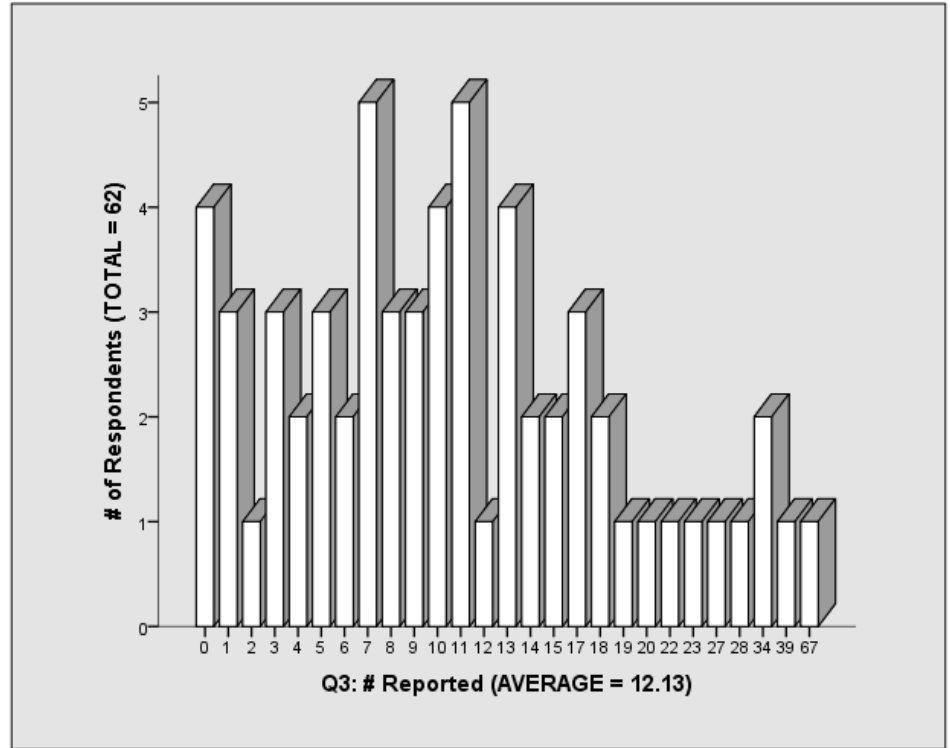


2. The number of women receiving only midwifery care (this is the number of women who received care from the reporting midwife ONLY. Women who received lab tests or ultrasounds should be counted in this category. Women who consulted with or transferred care to a Physician or other Allied Healthcare Provider during pregnancy, should not be included in this category):



COLORADO MIDWIFERY REGISTRATION 2012 STATISTICAL SUMMARY

3. The number of deliveries performed (total number of planned homebirth deliveries managed by the reporting midwife):

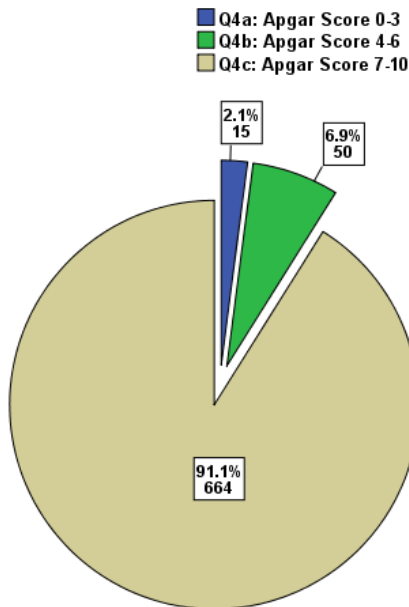


4a.–4c. The number of infants delivered by the reporting midwife, in the following Apgar score groupings (insert answers below):

ONE Minute

- 0–3
- 4–6
- 7–10

ONE MINUTE Apgar Scores Reported (62 Total Responses)



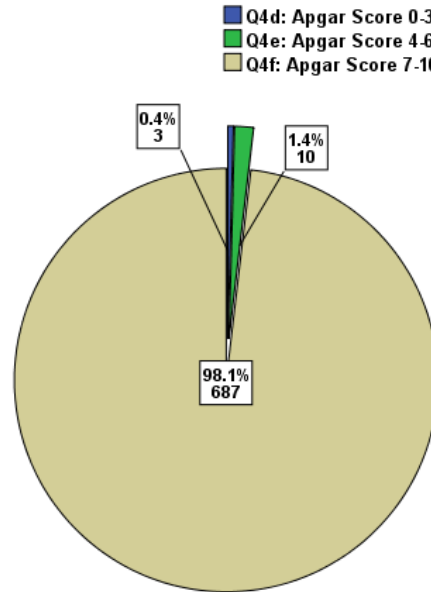
**COLORADO MIDWIFERY REGISTRATION
2012 STATISTICAL SUMMARY**

4d.–4f. The number of infants delivered by the reporting midwife, in the following Apgar score groupings (insert answers below):

FIVE Minutes

- 0–3
- 4–6
- 7–10

FIVE MINUTE Apgar Scores Reported (62 TOTAL Respondents)

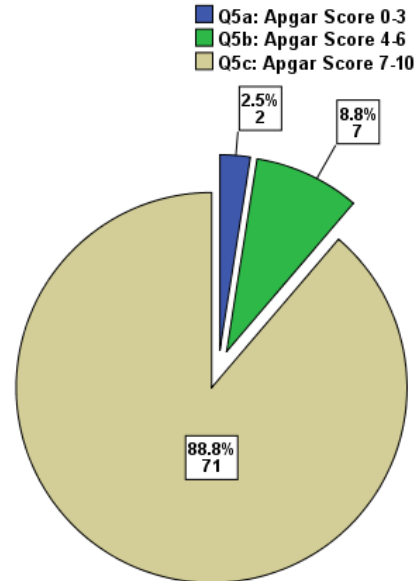


5a.–5c. If available, the number of infants delivered in the hospital after transfer, in the following Apgar score groupings (insert answers below):

ONE Minute

- 0–3
- 4–6
- 7–10

ONE MINUTE Apgar Scores Reported (62 TOTAL Respondents)



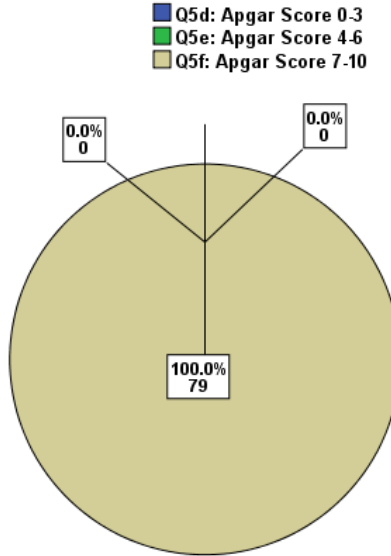
COLORADO MIDWIFERY REGISTRATION 2012 STATISTICAL SUMMARY

5d.–5f. If available, the number of infants delivered in the hospital after transfer, in the following Apgar score groupings (insert answers below):

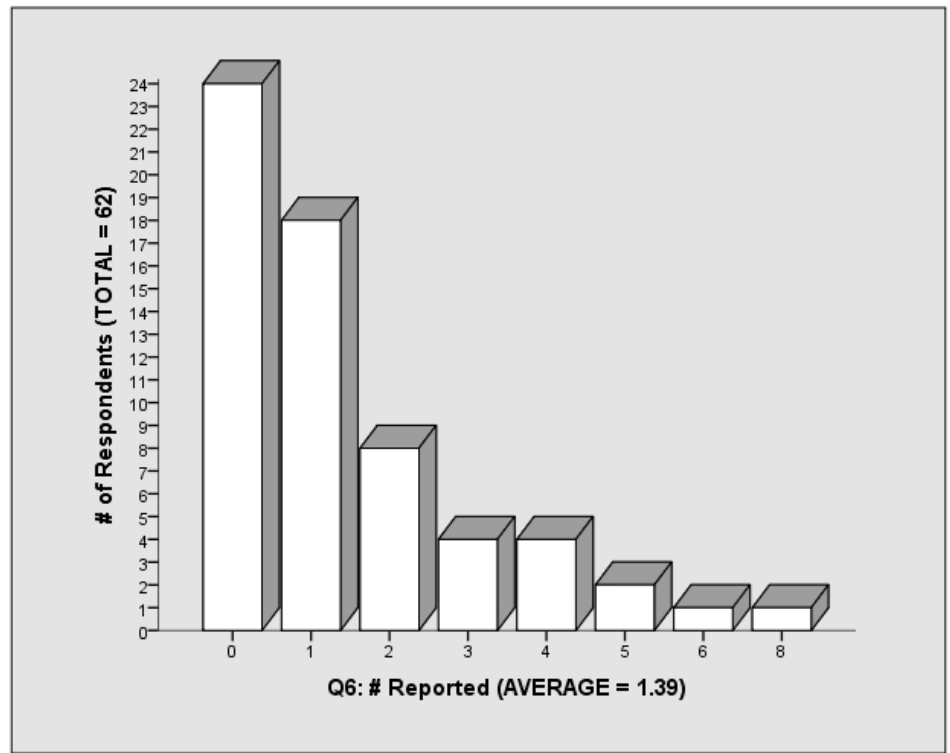
FIVE Minutes

- 0–3
- 4–6
- 7–10

FIVE MINUTE Apgar Score Reported (62 TOTAL Respondents)

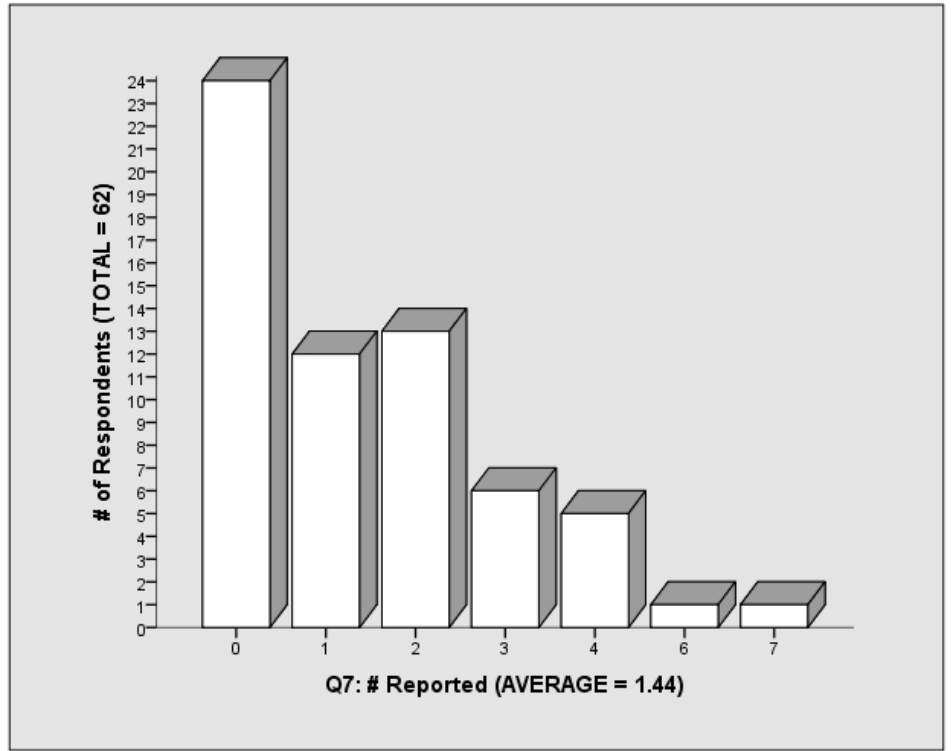


6. The number of prenatal transfers (total number of women transferred out of midwifery into physician care prior to birth):



**COLORADO MIDWIFERY REGISTRATION
2012 STATISTICAL SUMMARY**

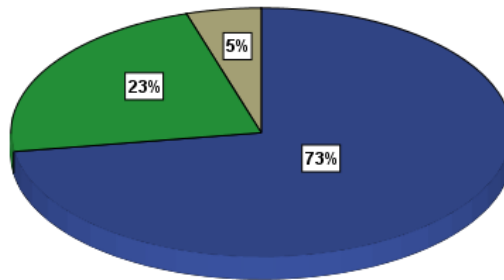
7. The number of transfers during labor and/or delivery (total number of women who transferred from a planned homebirth into physician care after the onset of labor has been identified):



8. The number of transferred **mothers** immediately following birth within the first 24 hours (total number of women transferred into physician care within the first 24 hours after a planned homebirth):

Q8: TOTAL Respondents = 62

■ 0 = 45 Respondents
■ 1 = 14 Respondents
■ 2 = 3 Respondents

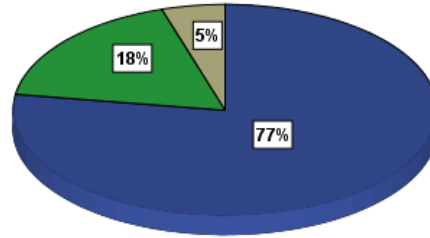


**COLORADO MIDWIFERY REGISTRATION
2012 STATISTICAL SUMMARY**

9. The number of transferred *infants* immediately following birth within the first 24 hours (total number of infants transferred into physician care within 24 hours after a planned homebirth):

Q9: TOTAL = 62 Respondents

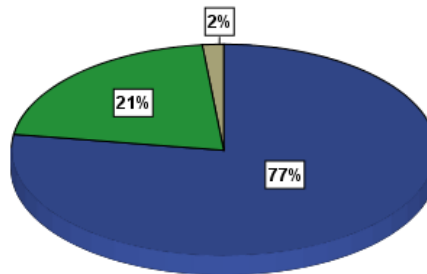
■ 0 = 48 Respondents
■ 1 = 11 Respondents
■ 2 = 3 Respondents



10. The number of infants referred for medical care after 24 hours of age and before 8 days of age (not including referrals for pediatric checkups):

Q10: TOTAL = 62 Respondents

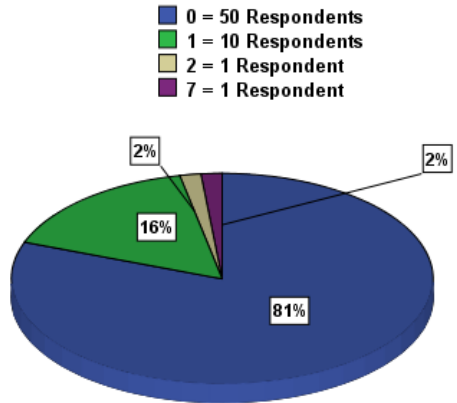
■ 0 = 48 Respondents
■ 1 = 13 Respondents
■ 2 = 1 Respondent



**COLORADO MIDWIFERY REGISTRATION
2012 STATISTICAL SUMMARY**

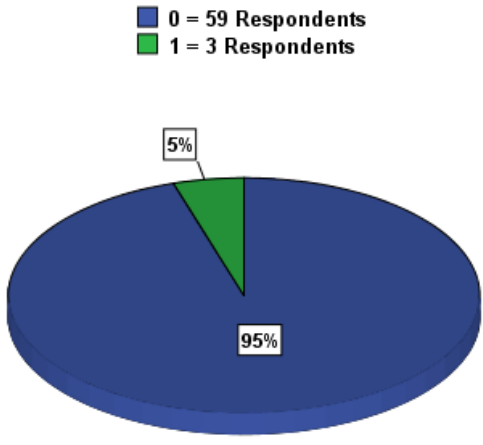
11. The number of infants referred for medical care on or after 8 days of age and before 6 weeks of age (not including referrals for pediatric checkups):

Q11: TOTAL = 62 Respondents

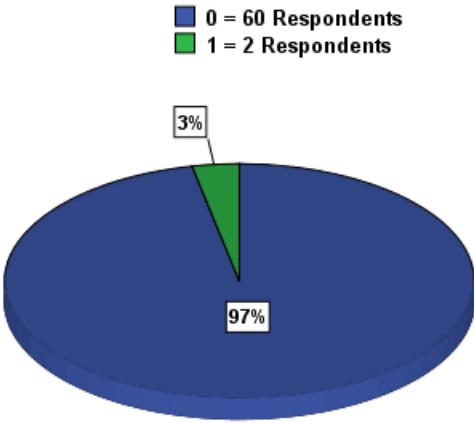


12. The number of perinatal deaths while under the reporting midwife's care.
(a) The number of prenatal fetal deaths occurring prior to the onset of labor:

Q12a: TOTAL = 62 Respondents

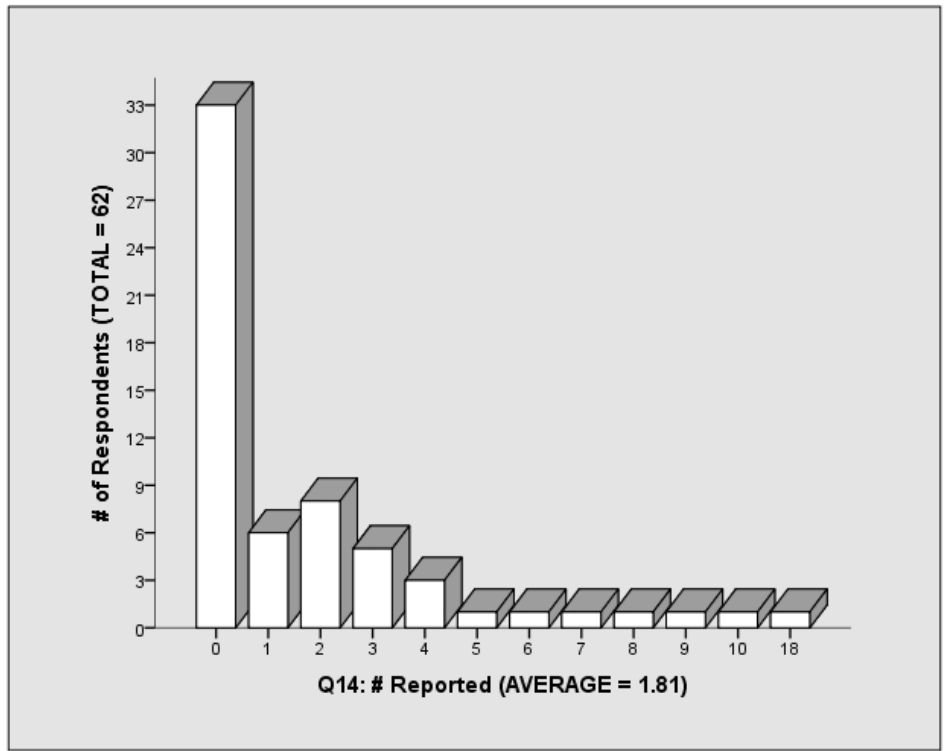


**COLORADO MIDWIFERY REGISTRATION
2012 STATISTICAL SUMMARY**

<p>(b) The number of intrapartum fetal deaths occurring after the onset of labor but before birth:</p>	<ul style="list-style-type: none"> • All Respondents Reported "0" (Zero); TOTAL # = 62 									
<p>(c) The number of postpartum infant deaths occurring after birth and prior to the 28th day of life:</p>	<ul style="list-style-type: none"> • All Respondents Reported "0" (Zero); TOTAL # = 62 									
<p>13. The number of perinatal deaths after transfer of care to a medical professional. (a) The number of prenatal fetal deaths occurring prior to the onset of labor:</p>	<ul style="list-style-type: none"> • All Respondents Reported "0" (Zero); TOTAL # = 62 									
<p>(b) The number of intrapartum fetal deaths occurring after the onset of labor but before birth:</p>	<ul style="list-style-type: none"> • All Respondents Reported "0" (Zero); TOTAL # = 62 									
<p>(c) The number of postpartum infant deaths occurring after birth and prior to the 28th day of life:</p>	<p align="center">Q13c: TOTAL = 62 Respondents</p>  <p>A 3D pie chart titled "Q13c: TOTAL = 62 Respondents". The chart is divided into two segments: a large blue segment representing 97% (60 respondents) for the value '0', and a small green segment representing 3% (2 respondents) for the value '1'. A legend above the chart shows a blue square for "0 = 60 Respondents" and a green square for "1 = 2 Respondents".</p> <table border="1"> <thead> <tr> <th>Response</th> <th>Percentage</th> <th>Number of Respondents</th> </tr> </thead> <tbody> <tr> <td>0</td> <td>97%</td> <td>60</td> </tr> <tr> <td>1</td> <td>3%</td> <td>2</td> </tr> </tbody> </table>	Response	Percentage	Number of Respondents	0	97%	60	1	3%	2
Response	Percentage	Number of Respondents								
0	97%	60								
1	3%	2								

**COLORADO MIDWIFERY REGISTRATION
2012 STATISTICAL SUMMARY**

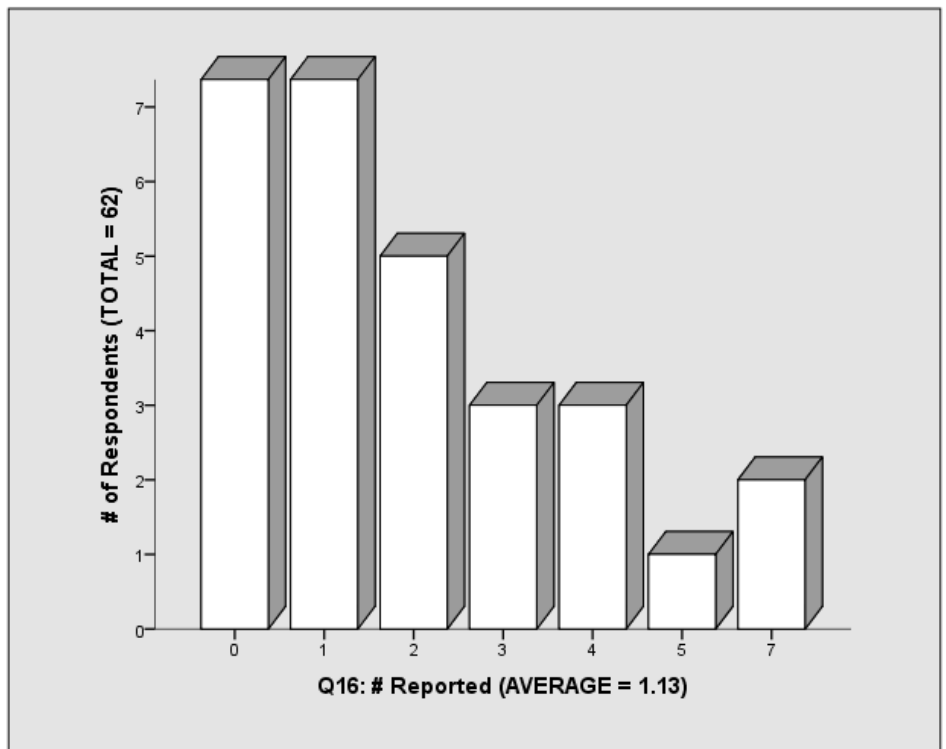
14. The number of women who experienced a perineal laceration severe enough to require repair, whether or not the laceration was repaired:



15. The number of maternal deaths:

- All Respondents Reported "0" (Zero); TOTAL # = 62

16. The number of VBAC women to whom midwifery care was provided:

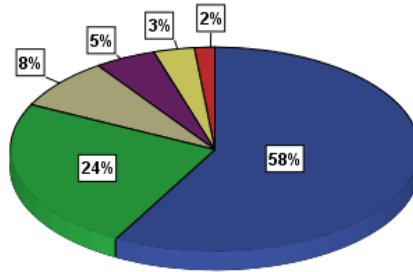


**COLORADO MIDWIFERY REGISTRATION
2012 STATISTICAL SUMMARY**

17. The number of VBAC women who delivered at home:

Q17: TOTAL = 62 Respondents

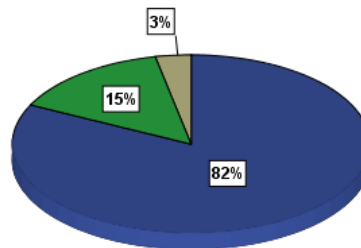
■ 0 = 36 Respondents ■ 3 = 3 Respondents
 ■ 1 = 15 Respondents ■ 4 = 2 Respondents
 ■ 2 = 5 Respondents ■ 5 = 1 Respondent



18. The number of VBAC women transferred during labor and/or delivery:

Q18: TOTAL = 62 Respondents

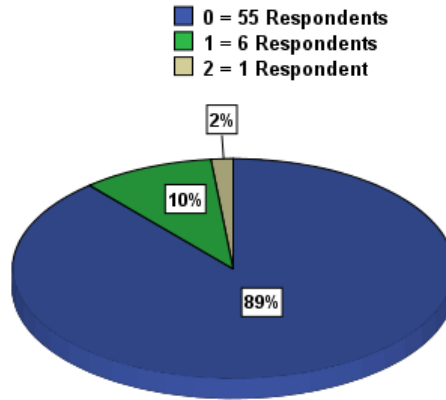
■ 0 = 51 Respondents
 ■ 1 = 9 Respondents
 ■ 2 = 2 respondents



**COLORADO MIDWIFERY REGISTRATION
2012 STATISTICAL SUMMARY**

19. The number of VBAC women who birthed vaginally in hospital:

Q19: TOTAL = 62 Respondents



20. The number of uterine ruptures occurring in VBAC women planning a homebirth:

- **All Respondents Reported "0" (Zero); TOTAL # = 62**