



COLORADO

Department of Regulatory Agencies

Division of Insurance

Health Insurance Cost Report

(Detailing the health insurance market in Colorado, including premiums, financial status of health insurers, and the trends in the individual and group markets.)

to

The Colorado General Assembly

for

Calendar year 2018



in accordance with §10-16-111(4)(c) & (d), C.R.S.

Published January 15, 2021

Michael Conway

Commissioner of Insurance

January 15, 2021

To the Members of the House and Senate,

I am pleased to submit the Annual Health Insurance Report of the Commissioner of Insurance covering calendar year 2018, pursuant to §10-16-111(4)(c) and (d), C.R.S.

This report analyzes the health insurance marketplace in Colorado - the types of health insurance available to Coloradans, premiums, the factors that drive premiums, and the overall trends impacting the marketplace - both in the individual and group markets. It also reports on the financial status of health insurance carriers, as well as the regulatory oversight of these carriers.

This year's report covers year five of the implementation of the Affordable Care Act (ACA), including the benefits and consumer protections that are the key to the law's success. As the ACA continues, the Division of Insurance remains committed to monitoring the reforms and changes brought about by the law and those made to the law.

The Division of Insurance is committed above all else to consumer protection. The Division welcomes the opportunity to provide this detailed analysis of health insurance in Colorado.

Sincerely,

A handwritten signature in blue ink, appearing to read 'Michael Conway', is written over a faint, light blue circular watermark or seal.

Michael Conway

Commissioner of Insurance

2018 COLORADO HEALTH COST REPORT

Table of Contents

- DATA SOURCES AND PURPOSE 4
- INTRODUCTION 6
- SECTION 1: THE HEALTH INSURANCE MARKETPLACE IN COLORADO 7
 - STATE REGULATED HEALTH INSURANCE 10
 - GOVERNMENT HEALTH INSURANCE 10
 - SELF-INSURED MARKET 11
 - EXCESS LOSS COVERAGE 12
- SECTION 2: HEALTH INSURANCE PREMIUMS 13
 - OVERVIEW OF COLORADO HEALTH PLAN PREMIUMS 13
 - OVERVIEW OF COLORADO EMPLOYER-PROVIDED HEALTH PLAN PREMIUMS 14
 - ADDITIONAL INFORMATION ON COLORADO HEALTH PREMIUMS 18
 - LOSS RATIOS 19
 - COLORADO MEDICAL TREND IN DETAIL 20
 - EXPENSES 21
 - COLORADO HEALTH PREMIUMS, INCURRED LOSSES AND MEDICAL LOSS RATIOS 22
 - RATE REGULATION 23
 - SUBMISSIONS OF RATE FILINGS IN COLORADO 24
- SECTION 3: FINANCIAL STATUS OF THE TOP 10 HEALTH INSURERS IN COLORADO, INCLUDING ALL MARKET SEGMENTS AND INSURANCE PRODUCTS. 25
 - MARKET SHARE 25
 - CAPITAL AND SURPLUS 26
 - MEDICAL AND HOSPITAL EXPENSES 27
 - ADMINISTRATIVE EXPENSES 27
 - CLAIMS ADJUSTMENT EXPENSES 28

NET UNDERWRITING GAIN (OR LOSS)	28
NET INVESTMENT INCOME GAIN (OR LOSS)	29
NET INCOME (OR LOSS)	29

ACKNOWLEDGEMENTS

The Division of Insurance would like to acknowledge and thank all of the staff who contributed to producing this report.

The report was written and researched by:
Kelly Schultz

Data compilation and analysis assistance was provided by:
Sean Brady

Editorial assistance was provided by:
Kyle Brown

For further information, please contact the Division of Insurance, Rates and Forms Section, 303-894-7499 or visit our website at DORA.Colorado.gov/insurance.

Data Sources and Purpose

Colorado Health Cost Survey (CHCS)

- The Colorado Division of Insurance surveys the top 95% of major medical health insurers by written premium in the state of Colorado. This is to gather detailed financial information and determine how this premium is being spent by these carriers. It has data as of December 31, 2018.
- DORA.Colorado.gov/insurance

Colorado Insurance Industry Statistical Report (CIISR)

- The Colorado Insurance Industry Statistical Report collects financial data filed in accordance with State Regulations for dissemination to the public. It has data as of December 31, 2018.
- DORA.Colorado.gov/insurance

Colorado Excess Loss Survey (CELS)

- The Colorado Excess Loss Survey gathers information from companies about excess loss coverage provided to employers with 2-100 employees. It has data as of December 31, 2018.
 - DORA.Colorado.gov/insurance

Colorado Health Access Survey (CHAS)

- This survey is conducted once every two years by the Colorado Health Institute, covering 10,000 Coloradans and represents aggregate numbers available to the division but is limited solely to Colorado and cannot be compared with national information. The survey focuses on a variety of health issues, including respondent's health coverage at the time of the survey. It has data reflecting 2019.
 - coloradohealthinstitute.org/research/colorado-health-access-survey

Current Population Survey (CPS)

- This survey is conducted every year by the U.S. Census Bureau. The most recent survey covered more than 185,000 Americans, but only 2,375 Coloradans, and provides consistent data for year-to-year trend and state to national comparison. This survey focuses on employment and income. It asks about insurance coverage during the previous 12 months. It has data from approximately March 2018 covering the previous 12 months.
 - census.gov/programs-surveys/cps.html

American Community Survey (ACS)

- This survey is conducted by the U.S. Census Bureau and provides a state to national comparison. It underwent changes in methodology and data organization in 2014. This survey is focused upon employment, income and socioeconomic status, but does ask health insurance related questions to some respondents about coverage during the previous year. It collects data throughout the year rather than on an annual basis.
 - census.gov/programs-surveys/acs/

Medical Expenditure Panel Survey (MEPS)

- The MEPS data is a conglomeration of surveys of families, individuals, medical providers and employers. It provides data on the cost and use of health care and health insurance coverage across the United States. It provides data for 2018.
 - meps.ahrq.gov/mepsweb/

Introduction

This report examines Colorado's health insurance market, including the factors impacting premiums, the overall trends in both the individual and group markets (both small and large group), and the financial status of health insurers in our state, particularly the ten largest health insurers in Colorado. In looking at changing health insurance premiums in Colorado, this report compares them to nationwide data and provides a breakdown of how premiums collected in Colorado during 2018 were used. It also reviews many of the factors that drive the increase of health premiums: inflation, cost shifting, utilization, introduction of new technology, and several others. Additional data, definitions and an explanation of insurance terms are located in Appendices 1 & 2. A list of intermediaries is located in Appendix 3.

2018 Highlights

- The Colorado Division of Insurance ("Division") regulates major medical health coverage plans for over 1 million Coloradans according to the Colorado Health Cost Survey - CHCS.
- About a third of all Coloradans, 27% (CPS), 33% (ACS), and 35% (CHAS) have health insurance coverage through federal government programs including but not limited to Medicare, Medicaid, the Federal Employees' Health Benefit Plan, and the Veteran's Administration.
- During 2018, more than half of all Coloradans were covered by employment-based insurance. This proportion is very similar to the national number of people insured. According to the CPS, the Colorado rate of employment-based insurance is 62%, while ACS shows it as 57%.
- The percentage of Colorado's private employers that self-insure at least one plan stayed at 44% in 2018, from a high of 48% in 2016. The national rate is 47% in 2018. Employer-funded or self-insured plans are regulated by the federal government under the Employees' Retirement Income Security Act and often are called "ERISA" plans - MEPS.
- The uninsured rate for Coloradans varies by survey from 9.1% in the CPS, 7.5% in the ACS, and 6.5% according to the CHAS in 2018.
- The average deductible in Colorado is \$2,005 for single and \$4,011 for family coverage. - MEPS
- For employment-based coverage in our state, Colorado employees paid 21% of the total premium for single coverage and 27% for family coverage, compared to 21% for single coverage and 28% for family coverage nationally. With employment-based coverage, employers paid the remaining portion of premiums. - MEPS
- Approximately 85% of premiums collected in Colorado went directly to the cost of providing healthcare services. This exceeds the 80% minimum for individual and small group plans, and matches the 85% required for large group plans, required under the Affordable Care Act (ACA). Approximately 20% of premiums were used for administrative expenses and producer commissions. Combined, this means that overall, insurance companies operated at a loss, as they spent 105% of the premium they took in during 2018. - CHCS
- The top 10 largest health insurers make up 75% of the total Health Coverage market in Colorado which includes Major Medical as well as additional types of health coverage such as dental, vision, long term care and others. There were approximately 370 health insurers with written premium in Colorado in 2018. - CIISR

Section 1: The Health Insurance Marketplace in Colorado

This section examines the types and sources of health coverage available to the people of Colorado. The majority of Coloradans get their health coverage through group plans offered by their employers, including self-insured plans. Some of the population purchased their own private individual insurance or received coverage through a government program.

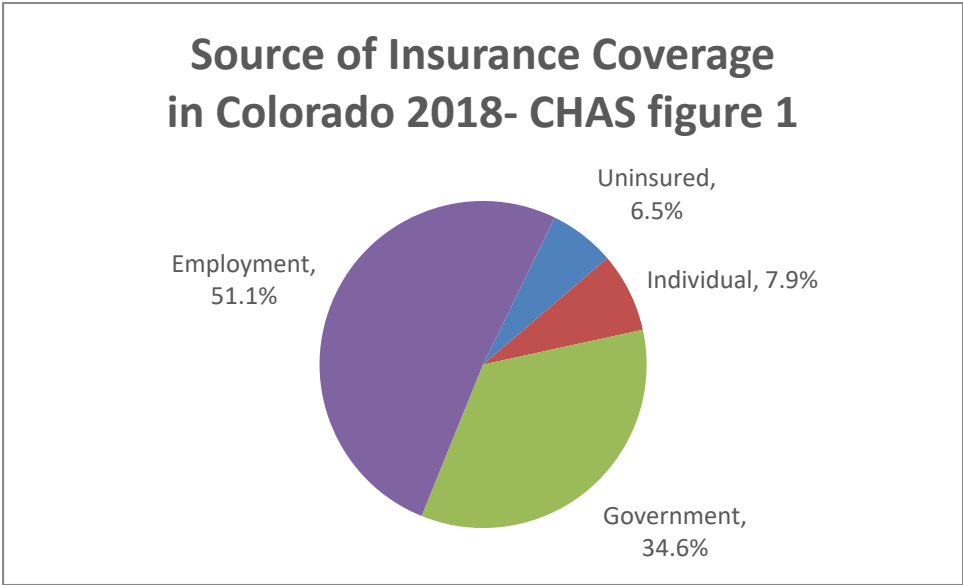
Discovering and understanding the true uninsured rate for a state is difficult. There are many surveys that attempt to provide this information and they rarely agree with one another. Some of the reasons for this are due to how a question is asked, e.g. "Are you insured today?" versus "Were you insured sometime in the last calendar year?" Also surveys do not poll 100% of the population. They extrapolate from smaller numbers of individuals so variations between polls are not unusual. This can lead to discrepancies when different answers are provided, questions are asked in different ways or sample sizes vary significantly between surveys.

The following charts are presented to show the sources of health insurance in Colorado, and that while the actual numbers provided vary due to methodology, the overall trend is usually consistent between them.

When looking over the three figures note that the CHAS survey data is taken only every two years, the ACS survey is focused on economic status, and that the CPS survey has a particularly low sample size for Colorado specific uses. In addition the CPS survey has undergone a methodology change in 2018 from its previous polling. Each of these factors led to the differences in data between the surveys.

However all three surveys agree that the uninsured rate had been dropping slowly until a significant dip occurred in 2014. The rate has steadied from 2015 onward.

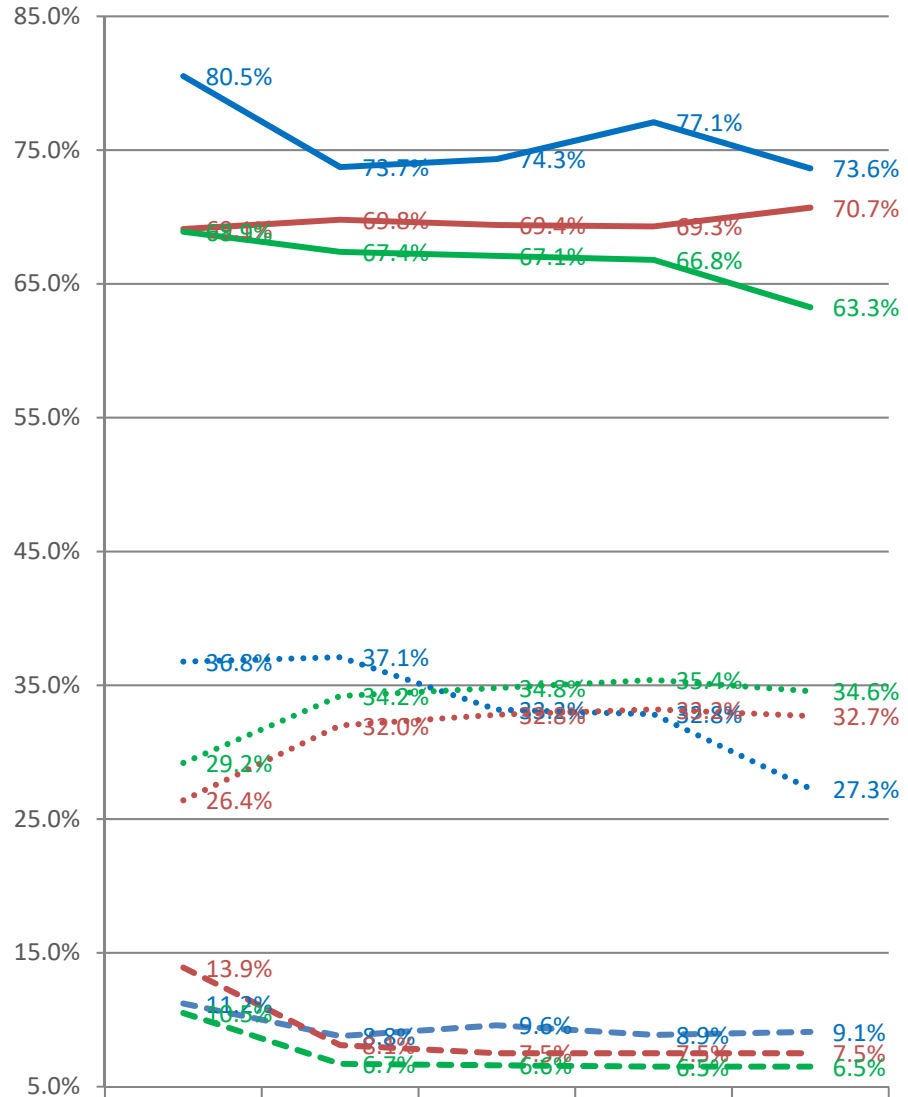
The larger shifts shown by the CPS survey in comparison with the other two surveys may be due to the small sample size which exaggerates any variance from the norm as well as their 2018 methodology change.



Colorado typically recognizes the Colorado Health Access Survey as the most accurate for the state given that it is both state centered and polls more individuals than either the ACS or CSP surveys do. Unfortunately it is a biannual survey, and only occurs every other year. This means that we can only use average values for those years between surveys, such as 2018 which represents an average between the 2017 and 2019 CHAS reports above.

Sources of Insurance Coverage in Colorado comparison of three surveys CPS, ACS, CHAS

Figure 2



	2014	2015	2016	2017	2018
Private CPS	80.5%	73.7%	74.3%	77.1%	73.6%
Private ACS	69.1%	69.8%	69.4%	69.3%	70.7%
Private CHAS	68.9%	67.4%	67.1%	66.8%	63.3%
Government CPS	36.8%	37.1%	33.2%	32.8%	27.3%
Government ACS	26.4%	32.0%	32.8%	33.2%	32.7%
Government CHAS	29.2%	34.2%	34.8%	35.4%	34.6%
Uninsured CPS	11.2%	8.8%	9.6%	8.9%	9.1%
Uninsured ACS	13.9%	8.1%	7.5%	7.5%	7.5%
Uninsured CHAS	10.5%	6.7%	6.6%	6.5%	6.5%

STATE REGULATED HEALTH INSURANCE

The Division of Insurance has primary regulatory authority over commercial health carriers in Colorado. As shown in the table below, this does not include self-insured employer health plans, Medicare or Medicaid, which are regulated by the federal government. There are three primary markets for health insurance that are subject to state regulation: the individual, small group, and large group markets (although not self-insured employers). Connect for Health Colorado, the state's exchange, sells plans in the individual and small group markets.

GOVERNMENT HEALTH INSURANCE

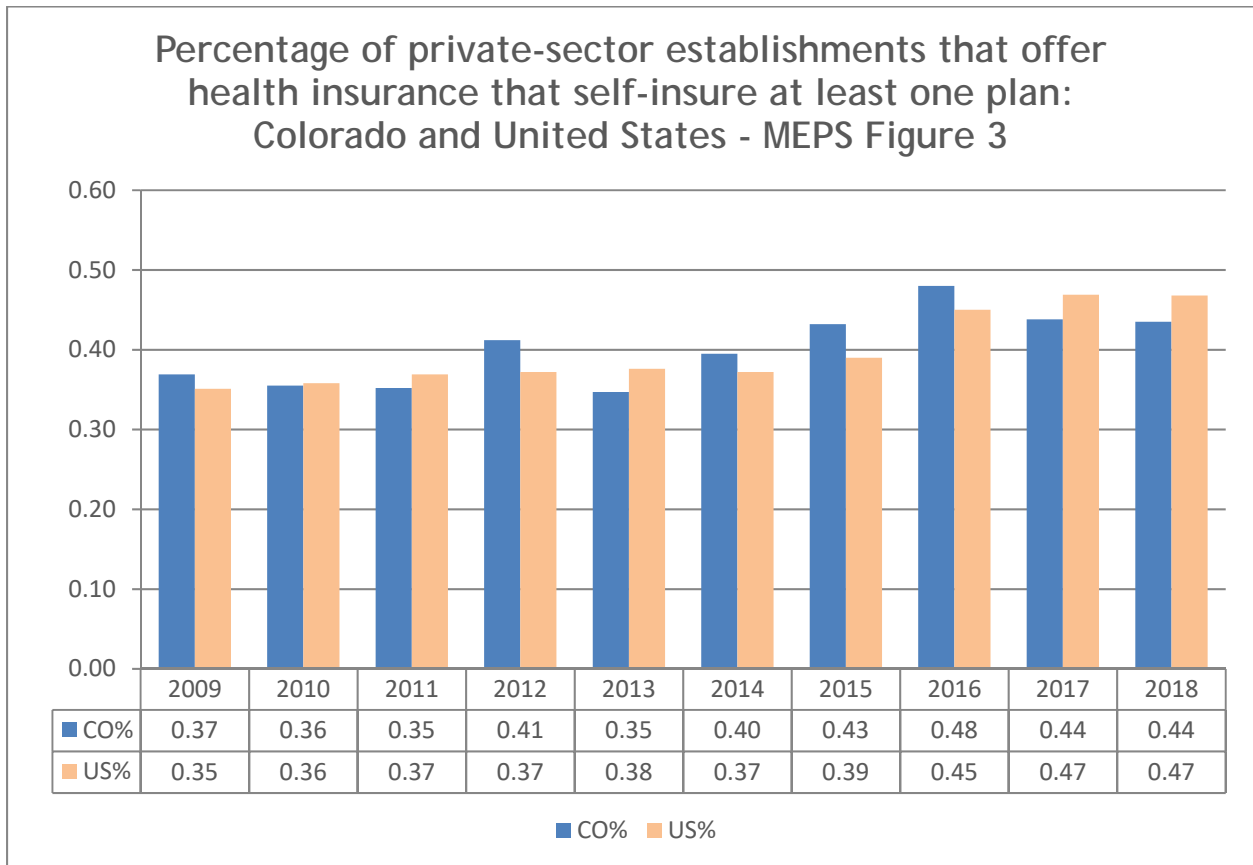
According to the US Census Bureau in 2018, 27% of Coloradans got their health care coverage through government programs such as Medicare, Medicaid, the Federal Employees' Health Benefit Plan, the Veteran's Administration, and other government programs. These programs are administered by the state and federal governments, and are paid for by a combination of participant payments (similar to premiums) and tax dollars.

Colorado Health Insurance Covered Lives in 2018 ¹ CPS/CHCS Table 1	
Colorado population	5,734,302
Insured	5,233,169
Uninsured	501,133
Jurisdiction of the Division of Insurance	1,058,157
Individual	204,234
Small Group	273,960
Large Group	579,962
Not Regulated by the Division of Insurance	5,074,700
Medicare	943,560
Medicaid	621,747
Self-Insured (Employer-based)	3,509,393

¹ Enrollment numbers in the above table may include multiple policies per person. Individuals may also be covered by both Medicare and Medicaid, or start the year with coverage from one plan and end the year with a different plan. In 2018 CPS changed its methodology and no longer individually breaks out all forms of Military Health Coverage.

SELF-INSURED MARKET

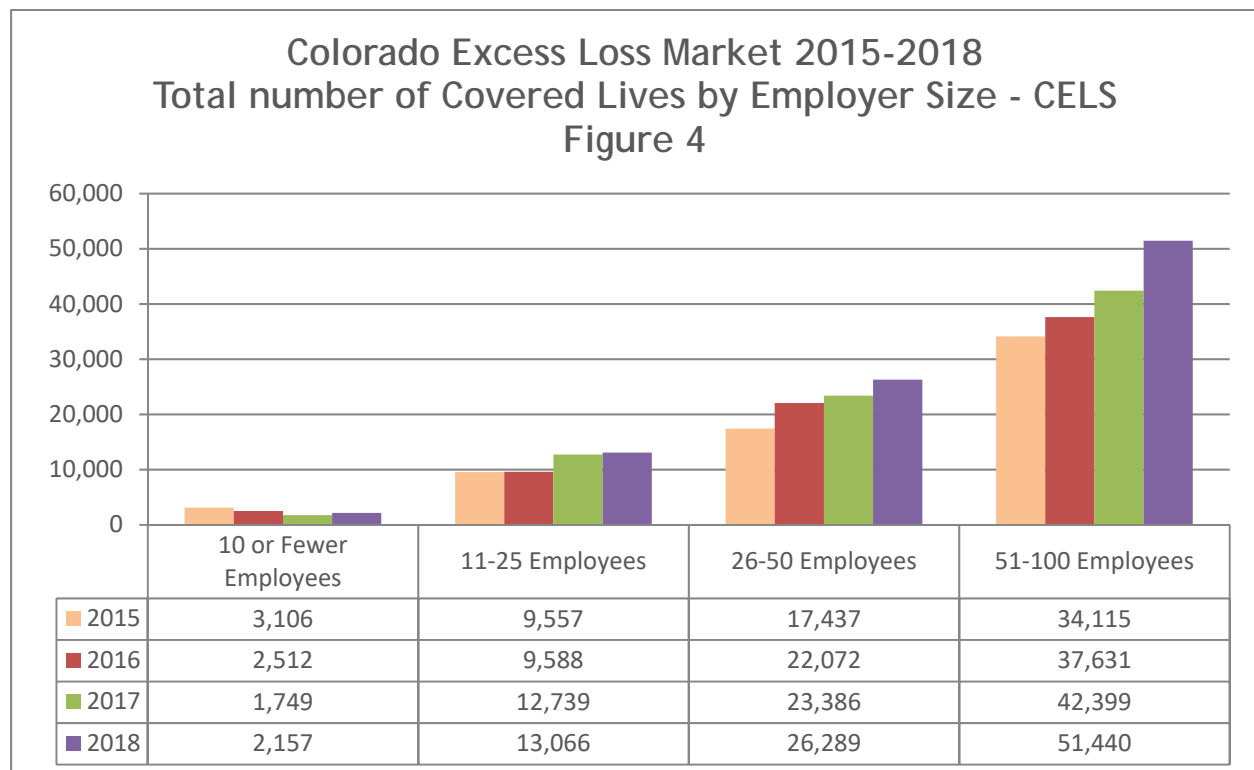
Even though the Division does not regulate employer self-insured health plans (also called ERISA plans), it is informative to note the changes in the number of such plans in Colorado over the last 10 years. The Colorado market had seen a steady increase since 2014 until a drop in 2017. The figure below shows that the number of private employers in Colorado offering health plans and that self-insure at least one of their plans have generally increased over the last 10 years.



EXCESS LOSS COVERAGE

Excess Loss, or Stop Loss, coverage protects employers using self-insured health plans from insolvency by insuring them against severe losses. Typically it insures the employers against a very costly single (per person), or aggregate (per company) event(s). Excess Loss insurance allows even smaller companies to self-insure their health plans.

- In 2018, Excess Loss covered 92,952 lives that were insured by companies with 100 or fewer employees. This represents an increase of 15% over 2017.
- There were, on average, 49 covered lives per employer in 2018, compared to 50 in 2017.
- 55% of covered lives were covered by employers in the 51-100 employee range, with an average of 74 employees and 81 covered lives.
- The smallest category (10 or fewer employees), covered only 2.3% of covered lives, with an average of 12 covered lives and 7 employees per group.
- There has been a significant and consistent increase in the use of Excess Loss Coverage in Colorado from 2015 through 2018, with the number of covered lives increasing by over 44% in that period.



SECTION 2: HEALTH INSURANCE PREMIUMS

This section examines health insurance premiums and presents data on how premiums collected in Colorado are used.

Increases in health premiums are driven by a wide range of factors. Some of these include medical service costs, general inflation, medical inflation in excess of general inflation, increased utilization of health care services, higher priced technologies and new drugs, increases in wages and cost of materials, consumer demand, demographics, benefit mandates and regulations, aging, and cost shifting.

When looking at the tables below, keep in mind that carriers who offer on-exchange plans must also offer those plans off the exchange. Large Group plans are not available on the exchange. These numbers do not reflect the impact ACA advanced premium tax credits (APTC) have on the premium costs to consumers for individual exchange-based plans.

These numbers were calculated on received premiums over all policies, and so do not reflect any specific premium paid by Colorado individuals for coverage.

OVERVIEW OF COLORADO HEALTH PLAN PREMIUMS

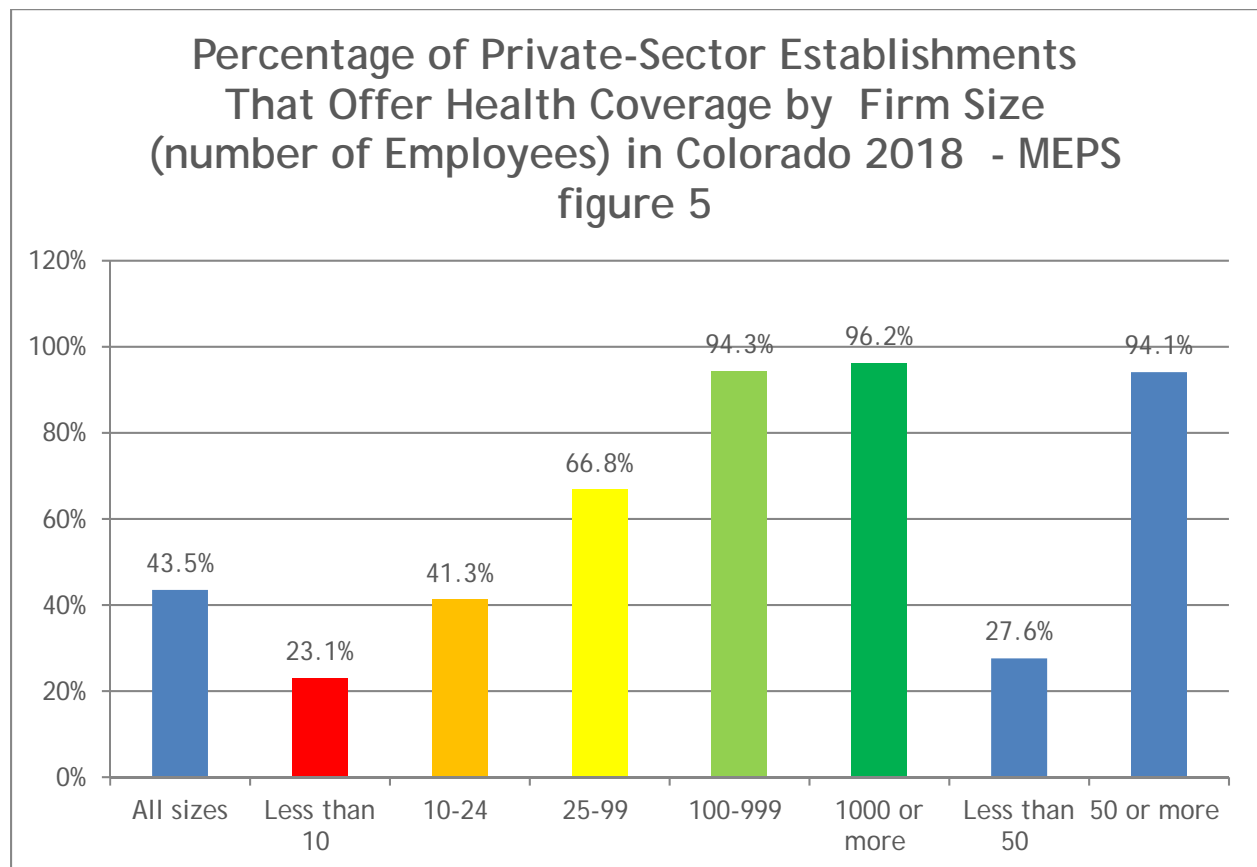
Major Medical Coverage -MEPS Table 2	Individual On Exchange	Individual Off Exchange	Small Group On Exchange	Small Group Off Exchange	Large Group
Average Premium per life per month	\$559	\$561	\$342	\$423	\$453
Average Premium per life per year	\$6,711	\$6,727	\$4,110	\$5,077	\$5,438
Number of insurance companies providing coverage	10	14	4	11	15

Individual Average Premium per life per month -CHCS Table 3	2015	2016	2017	2018
On Exchange	\$331	\$371	\$428	\$559
Off Exchange	\$247	\$317	\$399	\$561

OVERVIEW OF COLORADO EMPLOYER-PROVIDED HEALTH PLAN PREMIUMS

Health insurance provided by employers is a key source of coverage for both employees and their families under age 65. Job-related health insurance premiums can vary for many reasons, such as the type of health insurance plan offered, the generosity (benefits) of the plan, the size of the company offering the plan, the number of persons covered by the plan, where one lives, various workforce characteristics, state health insurance regulations, and the local cost of health care services. All of these factors can contribute to differences in the average health insurance premiums.

The figure below demonstrates how the size of an employer affects the accessibility of health coverage. Approximately 28% of small companies with less than fifty employees offer coverage compared to the 94% of larger firms that offer coverage. The number of small companies offering health insurance has fluctuated between 26% and 33% for the last five years. The percentage of large companies offering health coverage has been within a range of 94%-99% during the last 5 years.



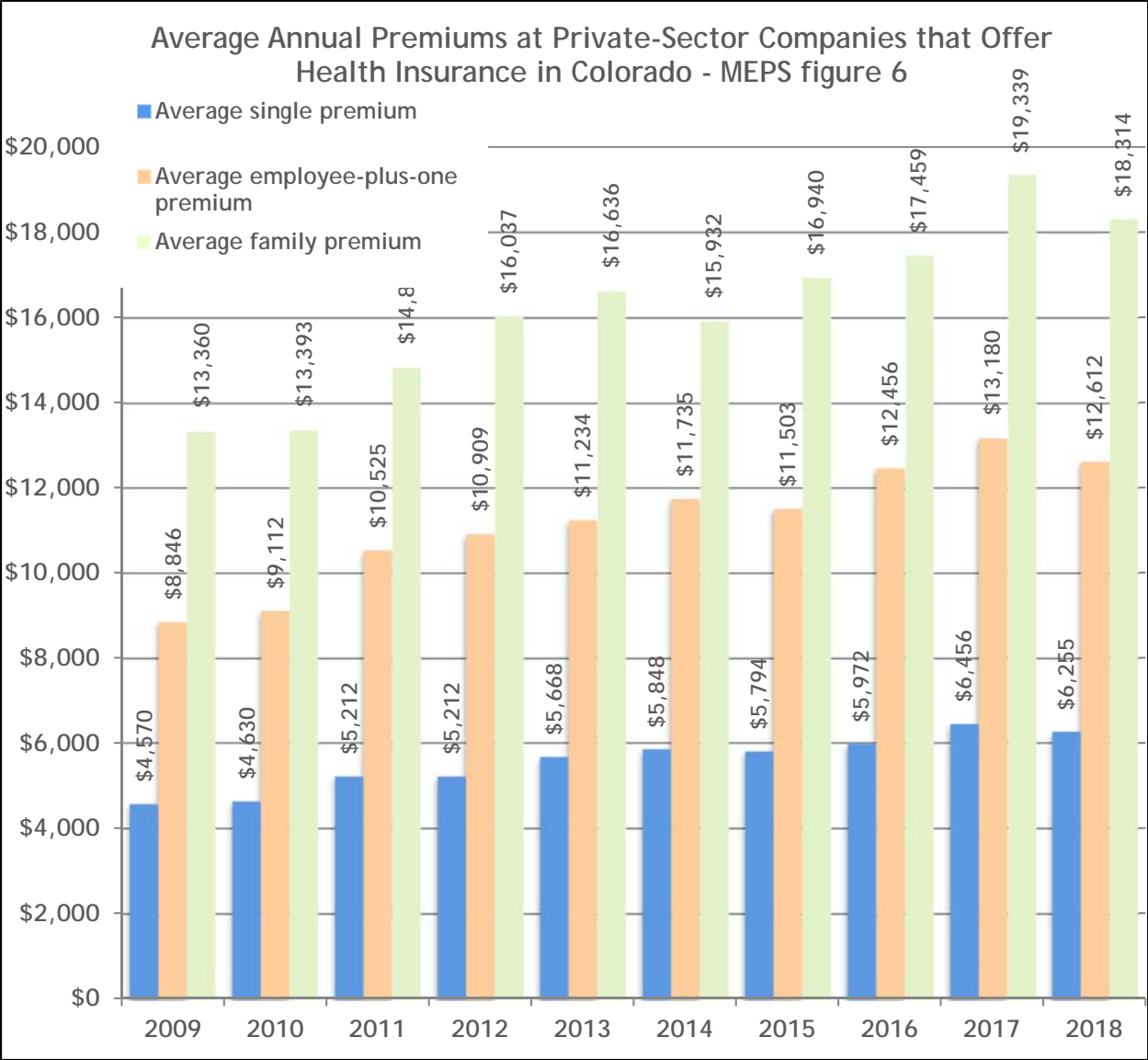
The following tables indicate the total premiums and percentages of total premium that Colorado employees are contributing towards health insurance. Premium costs for employer-based coverage are generally paid in part by the employer and in part by the employee, or could be paid completely by the employer. The percentage of health premiums that employees in Colorado are being asked to pay by their employers has fluctuated up and down around the national average.

In 2018, 57% of private sector employees enrolled in employer-sponsored health insurance plans in Colorado chose single coverage. The remaining 43% are split between single+1 coverage (19%), and family coverage (25%).

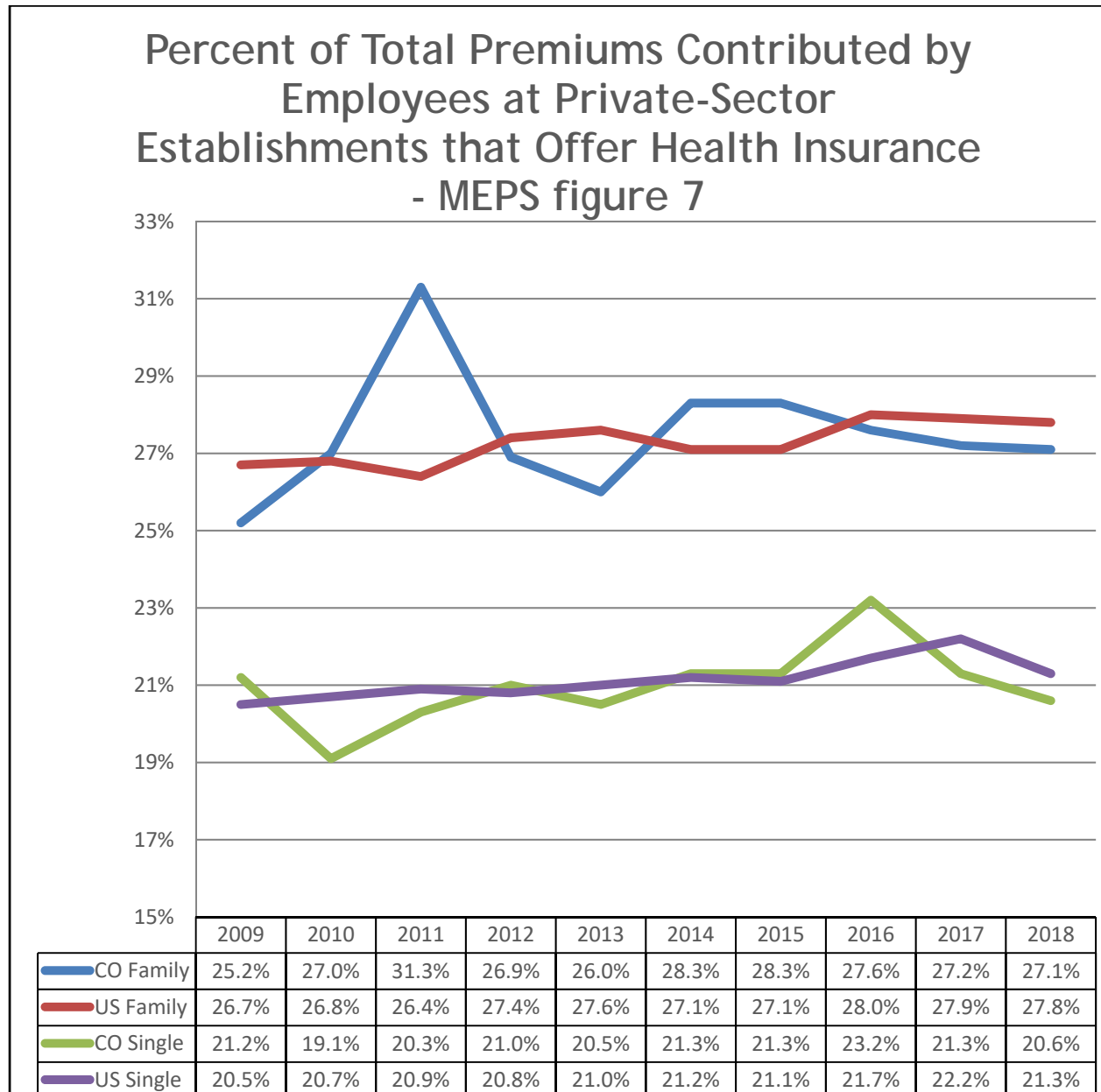
Average Premiums, Copayments, Deductibles and Contributions of Premium by available provider options - MEPS Table 4					
Single Coverage	Annual Average Total Premium	Average Copayment	Average Deductible	Annual Average Employee Contribution	Annual Average Employer Contribution
Exclusive-Provider Plans	\$5,802	\$29	\$2,005	\$1,326	\$4,476
Mixed-Provider Plans	\$6,340			\$1,285	\$5,055
Any-Provider Plans	\$6,602			\$1,227	\$5,375
Family Coverage	Annual Average Total Premium	Average Copayment	Average Deductible	Annual Average Employee Contribution	Annual Average Employer Contribution
Exclusive-Provider Plans	\$18,722	\$29	\$4,011	\$4,094	\$14,628
Mixed-Provider Plans	\$18,283			\$5,149	\$13,134
Any-Provider Plans	\$17,757			\$4,720	\$13,037

According to the Insurance Component of the Medical Expenditure Panel Survey, conducted by the U.S. Department of Health & Human Services, those employees with family coverage contributed both a larger dollar amount and a larger percentage of the total premium for their coverage than did employees with single coverage as is shown on the following table and figures.

Average Deductibles - MEPS Table 5	2014	2015	2016	2017	2018
Single Coverage	\$1,453	\$1,680	\$1,888	\$1,951	\$2,005
Family Coverage	\$3,095	\$3,062	\$3,481	\$3,721	\$4,011



Colorado employees paid 21% of the total premium for single coverage, and 27% for family coverage when splitting costs with their employers. The figure below shows that since 2012, the premium contribution rate for single coverage has remained relatively steady, and Colorado has been consistently close to the national average except for a brief rise in 2016. However, Colorado employees enrolled in family coverage carry much more of the burden of premium when compared to individual coverage holders.



ADDITIONAL INFORMATION ON COLORADO HEALTH PREMIUMS

In general, health insurance premium rates are determined by the sum of:

- projected medical expenses from claims;
- administrative expenses including commissions and taxes;
- profit and contingency factors

When submitting a rate filing with the Division, insurance carriers are required to provide a projection of each of the components above as a percent of premium. The sum of these components as a percent of premium should equal 100% of the projected premium. The Division evaluates whether each of these components is reasonable to determine whether the requested rate increase or decrease is appropriate.

In accordance with § 10-16-111(4)(a), C. R. S., health insurance carriers doing business in the state of Colorado are required to report a variety of health insurance cost information to the Division of Insurance. The Division breaks down these components for the year to illustrate how the premiums paid by Coloradans were spent by insurers.

Components of Colorado Health Care Premiums - CHCS Table 6		
	Insurer Expense 2017	Insurer Expense 2018
Medical Expenses	\$4,845,525,433	\$5,135,226,735
Administrative Expenses	\$1,055,457,630	\$1,232,219,382
Total Premium	\$5,625,867,315	\$6,038,365,967

It is important to note that the information above is from an aggregation of the data received from companies that represent the top 95% of premium reported in Colorado. The information above may not match specific company data due to allocation of national data, rounding procedures and non-premium revenue.

LOSS RATIOS

Medical expenses are the cost of paying for health care services for the insured, and include payments to hospitals, doctors and other providers. The medical loss ratio (MLR), which is the ratio of medical expenses incurred divided by premiums earned, is a reflection of the cost of health care delivery and a key measure of whether premium rates are reasonable.

Some examples of the minimum loss ratio guidelines provided in Colorado Insurance Regulations 4-2-11 and 4-3-1 include:

Minimum Loss Ratio Guidelines in Colorado in 2017 – Regulation 4-2-11 Table 7	
Comprehensive Major Medical (Individual)	80%
Comprehensive Major Medical (Small Group)	80%
Comprehensive Major Medical (Large Group)	85%

The average medical expense (also known as the minimum loss ratio) reported in 2018 of 86%, exceeds the minimum loss ratio guidelines provided in regulation. This indicates attempts to control premium increases should include efforts to control the costs of health care (what is paid to doctors, hospitals and other providers).

Major Medical Loss Ratios ¹ - CIISR Table 8	2014	2015	2016	2017	2018
Individual Coverage	91.49%	114.52%	100.49%	89.54%	76.41%
Small Group Coverage	76.93%	75.77%	74.11%	77.73%	82.56%
Large Group Coverage	83.48%	83.99%	86.59%	89.47%	90.63%
Colorado Total Medical Loss Ratio	84.46%	83.87%	88.58%	87.04%	85.77%

¹ NOTE: The federal medical loss ratio is not the same as Colorado's benefit ratio, in that the federal MLR makes modifications to its calculation such as subtracting out federal and state taxes, licensing and regulatory fees, as well expenses to improve the quality of care.

COLORADO MEDICAL TREND IN DETAIL²

Medical cost trend is the projected increase in the costs of medical services assumed in setting premiums for health insurance plans. Insurance companies use medical cost trends to estimate what the same plan would cost in the next year.

The Division has summarized the health cost survey responses and has provided a detailed summary of medical and pharmaceutical trends below.

Medical Trend by Year by Type of Health Insurance 2018 - CHCS Table 9	Average Medical Trend due solely to Provider Price Changes	Average Medical Trend due solely to Utilization Changes	Average Medical Trend due solely to Cost-shifting	Average Medical Trend due solely to New Medical Procedures and Technology	Average Total Medical Trend
Individual on Exchange	3.63%	6.89%	3.14%	1.02%	13.69%
Individual off Exchange	4.25%	10.15%	0.37%	1.14%	15.30%
Small Group on Exchange	2.18%	6.87%	-2.54%	0.00%	6.44%
Small Group off Exchange	4.02%	3.39%	-0.02%	0.26%	7.89%
Large Group	6.99%	0.86%	0.06%	0.38%	8.02%

Pharmaceutical Trend by Year by Type of Health Insurance 2018 - CHCS Table 10	Average Rx Trend due solely to Pharmaceutical Price Changes	Average Rx Trend due solely to Utilization Changes	Average Rx Trend due solely to Cost-shifting	Average Rx Trend due solely to New Drugs	Average Total Rx Trend
Individual on Exchange	3.89%	8.82%	6.41%	5.54%	21.66%
Individual off Exchange	10.03%	12.57%	3.54%	4.56%	30.01%
Small Group on Exchange	7.44%	5.67%	6.76%	2.72%	24.41%
Small Group off Exchange	8.62%	0.00%	1.87%	2.10%	11.69%
Large Group	2.61%	1.38%	2.67%	3.94%	10.17%

² The Division of Insurance relies solely upon the Health Cost Survey results to populate the tables above. Insurance Trend information is not universally reported. Companies reporting trend information must use the best assessment and allocation methods they can to assign portions of total medical trend to those categories of interest to the Division and the public. Therefore information in this section represents estimates for what portion of total trend each cost category is responsible for.

EXPENSES

The administrative expenses of an insurer represent the cost of operating the business. This includes staff salaries, producer commissions, dividends to policyholders, legal expenses, lobbying expenses, advertising or marketing expenses, charitable contributions, taxes, licenses, and fees.

The Colorado Health Insurance Cost Report asks insurers to provide the amount they paid for each of these types of expenses in Colorado each year. If an insurer was unable to isolate a particular expense so that it represented the portion attributable to their Colorado health insurance business, the insurers were asked to allocate it using earned premium. A summary of the expenses reported by the insurers submitting a Colorado Health Insurance Cost Report is in the following table.

Administrative Expenses reported by carriers covering the top 95% of written premium 2018 - CHCS Table 11		
Administrative and Other Expenses	Insurer Expense	Percent of Premium
Expenditures for disease or case management programs or patient education and other cost containment or quality improvement expenses	\$140,121,284	2.3%
Commissions	\$126,257,122	2.1%
Staff Salaries	\$229,512,484	3.8%
Dividends to Policyholders	\$0	0.0%
Legal Expenses	\$4,069,566	0.1%
Advertising or Marketing	\$32,879,077	0.5%
Lobbying Expenses	\$1,021,558	0.0%
Charitable Contributions	\$33,371,494	0.6%
Federal Income Taxes	\$173,090,560	2.9%
State Taxes, Licenses and Fees	\$132,016,843	2.2%
All Other	\$359,879,394	6.0%
Total	1,232,219,382	20.4%

COLORADO HEALTH PREMIUMS, INCURRED LOSSES AND MEDICAL LOSS RATIOS

Colorado Major Medical Health Benefit Plan Coverage Summary ¹ Table 12	Earned Premium	Incurred Losses	Loss Ratio
Individual Coverage	\$1,489,258,191	\$1,137,994,664	76.41%
Small Group Coverage	\$1,384,626,384	\$1,143,117,704	82.56%
Large Group Coverage	\$3,789,968,886	\$3,434,674,873	90.63%
Colorado Major Medical Totals	\$6,663,853,461	\$5,715,787,241	85.77%

Colorado Other Health Plan Coverage Summary ² Table 13	Written Premium	Earned Premium	Incurred Losses	Loss Ratio
Medicare Supplement	\$75,054,095	\$75,008,112	\$54,203,524	72.26%
Title XVIII Medicare Advantage	\$3,438,441,797	\$3,430,050,044	\$3,056,510,272	89.11%
Title XIX Medicaid	\$596,205,778	\$601,591,922	\$505,316,480	84.00%
Other ³	\$1,150,193,376	\$1,151,703,165	\$1,122,652,738	97.48%
Other Health Coverages Total	\$5,259,895,046	\$5,258,353,243	\$4,738,683,014	90.12%

¹Data taken from supplemental health exhibits submitted to the NAIC.

²Data taken from state page filings submitted to the NAIC.

³This includes non-major medical insurance such as Vision, Dental, Accident Only, Disability, Long Term Care etc.

RATE REGULATION

The Division of Insurance, within the Colorado Department of Regulatory Agencies (DORA), is the state's primary regulator of all types of insurance companies, including health insurance carriers operating in the state. This section provides an overview of the Division's regulatory authority as well as information about the Division's progress towards DORA's primary mission, consumer protection.

Rates are reviewed by the Division of Insurance to determine if rates are "excessive, inadequate or unfairly discriminatory". "Excessive Rates" occur when unreasonably high profits result or expenses are high in relation to the benefits provided. "Inadequate Rates" are where rates are not sufficient to pay losses and expenses, or where the use of the rates will result in a monopoly. "Unfairly Discriminatory" rates occur when the product prices do not equitably reflect differences in risks.

The Division reviews several thousand filings a year to determine if the rates are justified and comply with Colorado laws and regulations. Those filings determined to be too high are either rejected or allowed at a lower increase than requested. The following table shows the resulting consumer savings due to the Division's review of health insurance filings and intervention for the past five years.

Colorado Division of Insurance - Rates and Forms Consumer Savings From Review and Intervention ¹ Table 14	
2014	\$50,936,176
2015	\$74,924,033
2016	\$34,155,563
2017	\$65,768,824
2018	\$31,119,418

¹Data taken from internal records of the Division of Insurance Analysis of Health Rate Filings submitted by Insurers.

RATING FACTORS IN COLORADO

This table describes what factors can be used to adjust premiums in the state of Colorado.

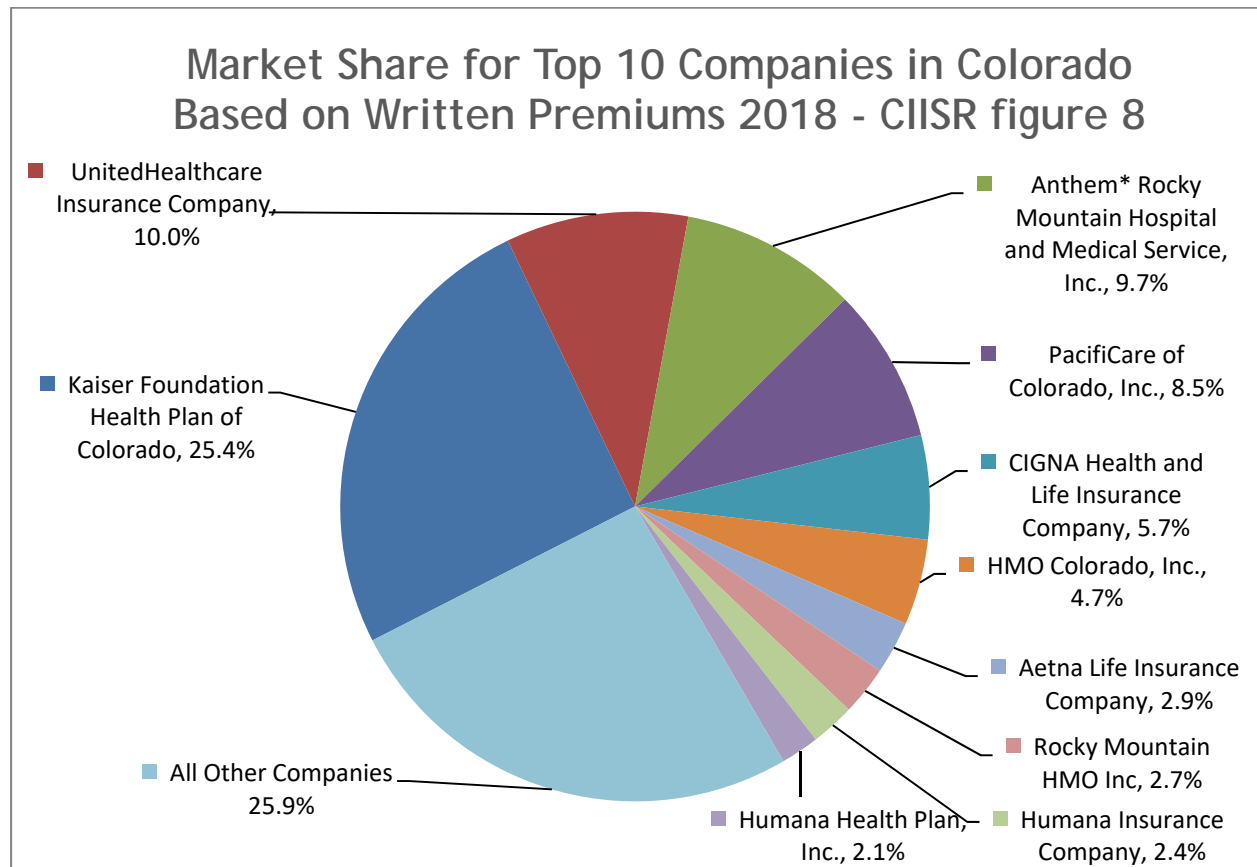
Summary of Rating Factors for Private Health Plans in Colorado in effect during 2018 Table 15 §§ 10-16-107 C.R.S., Regulation 4-2-39			
Rating Factor	Individual Plans	Small Group Plans	Large Group Plans
Age Band:	Single age band from 0 - 20, One-year age bands from 21 - 63, Single age band from 64+	Single age band from 0 - 20, One-year age bands from 21 - 63, Single age band from 64+	May Apply: Carriers use age in developing rates but supply an ageless rate to employers
Family Composition:	Per member rating methodology for each family member, no more than 3 oldest children under age 21 can be rated	Small Group carriers must follow composite rating rules in Colorado Insurance Regulation 4-2-39, or may offer family coverage on a per-member basis	As specified by the group
Gender Rating	Prohibited by § 10-16-107(2)(b) C.R.S	Prohibited by § 10-16-107(2)(b) C.R.S.	Allowed under § 10-16-107 C.R.S.
Area Factors:	Based on county where policy holder lives	Based on county of the principle business location	Limited to the area factors filed for use by the carrier, certain zip codes must be combined based on allowed rating practices in 4-2-39
Smoking Status or Tobacco Use:	May charge up to an additional 15% for tobacco use	May charge up to an additional 15% for tobacco use	No prohibition or requirement specified in CO law
Health Status:	Not allowed after 1/1/14	Not allowed after 12/31/2008	Aggregated for group and limited to the range or formula filed for use by the carrier
Claims Experience:	Not allowed after 1/1/14	Not allowed after 12/31/2008	Aggregated for group and limited to the range or formula filed for use by the carrier
Standard Industrial Classification:	Does Not Apply	Not allowed after 1/1/14	Aggregated for group and limited to the range filed for use by the carrier
Plan Design Factors: Cost Sharing, Managed Care Networks, etc.	Applies	Applies	Applies

SECTION 3: Financial Status of the Top 10 Health Insurers in Colorado, Including all market segments and insurance products.

All domestic insurance companies doing business in Colorado must submit quarterly and annual financial statements with the Colorado Division of Insurance. These statements are reviewed by financial analysts to monitor and ensure the insurers' financial solvency. Each domestic (Colorado-based) insurer is audited by the Division at least once every five years, and representatives from other states in which the insurer does business may join the audit.

MARKET SHARE

This section presents an overview of the operating results and financial status of the top ten companies with the highest written premiums from health insurance in Colorado. All figures in this section are from each company's annual financial statement and represent their total health business, including dental, vision, Medicare related, and other health insurance products, not just major medical coverage, as well as all markets - individual, small group and large group. The figure below shows that the top 10 largest health insurers make up 73% of the total health market in Colorado. There are approximately 370 health insurers in Colorado with written premiums, most of which provide products other than major medical insurance coverage.



Market Share of the Top 10 Health Carriers in Colorado - CHIIR Table 16		
Company	2018 Written Premiums (\$1,000s)	2018 Market Share
Kaiser Foundation Health Plan of Colorado	3,764,841	25.4%
UnitedHealthcare Insurance Company	1,479,133	10.0%
Anthem* Rocky Mountain Hospital and Medical Service, Inc.	1,428,233	9.7%
PacifiCare of Colorado, Inc.	1,258,816	8.5%
CIGNA Health and Life Insurance Company	842,986	5.7%
HMO Colorado, Inc.	699,193	4.7%
Aetna Life Insurance Company	423,432	2.9%
Rocky Mountain HMO Inc	403,777	2.7%
Humana Insurance Company	347,545	2.4%
Humana Health Plan, Inc.	317,299	2.1%
All Other Companies	3,837,568	25.9%
Total	14,802,823	100%

RISK-BASED CAPITAL PERCENTAGE

Risk-based Capital Percentage (RBC defined in appendix 2) Annual Financial Statements to the NAIC Table 17						
Company	2014	2015	2016	2017	2018	5-Year Average
Kaiser Foundation Health Plan of Colorado	267%	490%	440%	199%	497%	379%
UnitedHealthcare Insurance Company	560%	557%	480%	472%	536%	521%
Anthem* Rocky Mountain Hospital and Medical Service, Inc.	610%	640%	425%	434%	450%	512%
PacifiCare of Colorado, Inc.	542%	471%	307%	395%	463%	435%
CIGNA Health and Life Insurance Company	604%	558%	581%	534%	573%	570%
HMO Colorado, Inc.	565%	436%	491%	312%	698%	501%
Aetna Life Insurance Company	606%	565%	471%	408%	439%	498%
Rocky Mountain HMO Inc	478%	225%	303%	387%	578%	394%
Humana Insurance Company	412%	414%	487%	530%	408%	450%
Humana Health Plan, Inc.	433%	366%	453%	520%	662%	487%

MEDICAL AND HOSPITAL EXPENSES

Colorado Medical Loss Ratio Total Business Annual Financial Statements to the NAIC Table 18						
Company	2014	2015	2016	2017	2018	5 year Average
Kaiser Foundation Health Plan of Colorado	91.9%	95.9%	95.7%	97.8%	99.7%	96.2%
UnitedHealthcare Insurance Company	77.7%	77.7%	78.4%	83.0%	82.1%	79.8%
Anthem* Rocky Mountain Hospital and Medical Service, Inc.	85.7%	83.0%	85.8%	85.7%	88.7%	85.8%
PacifiCare of Colorado, Inc.	79.0%	77.8%	80.6%	80.0%	83.9%	80.3%
CIGNA Health and Life Insurance Company	79.3%	79.3%	77.3%	88.4%	85.1%	81.9%
HMO Colorado, Inc.	88.1%	89.1%	91.8%	84.3%	70.5%	84.7%
Aetna Life Insurance Company	81.6%	80.1%	80.8%	82.7%	68.2%	78.7%
Rocky Mountain HMO Inc	100.3%	104.2%	88.4%	86.2%	77.7%	91.4%
Humana Insurance Company	81.1%	84.7%	79.8%	81.3%	81.8%	81.7%
Humana Health Plan, Inc.	87.0%	91.7%	83.1%	79.7%	82.7%	84.8%

ADMINISTRATIVE EXPENSES

Administrative Expenses as a Percent of Colorado Earned Health Premiums Annual Financial Statements to the NAIC Table 19						
Company	2014	2015	2016	2017	2018	5 year Average
Kaiser Foundation Health Plan of Colorado	7.9%	8.0%	7.8%	5.6%	6.9%	7.2%
UnitedHealthcare Insurance Company	15.3%	15.9%	16.9%	13.9%	14.9%	15.4%
Anthem* Rocky Mountain Hospital and Medical Service, Inc.	9.9%	9.8%	8.6%	6.7%	8.3%	8.7%
PacifiCare of Colorado, Inc.	9.0%	9.3%	8.8%	7.7%	8.7%	8.7%
CIGNA Health and Life Insurance Company	4.2%	4.5%	2.3%	3.0%	5.7%	3.9%
HMO Colorado, Inc.	13.0%	12.3%	10.9%	8.3%	9.4%	10.8%
Aetna Life Insurance Company	14.4%	15.0%	14.3%	12.3%	13.1%	13.8%
Rocky Mountain HMO Inc	6.7%	6.3%	8.3%	5.8%	10.4%	7.5%
Humana Insurance Company	9.9%	9.5%	10.7%	9.8%	10.9%	10.2%
Humana Health Plan, Inc.	10.2%	9.1%	9.6%	8.6%	10.0%	9.5%

CLAIMS ADJUSTMENT EXPENSES

Claims Adjustment Expenses as a Percent of Colorado Earned Health Premium Annual Financial Statements to the NAIC Table 20						
Company	2014	2015	2016	2017	2018	5 year Average
Kaiser Foundation Health Plan of Colorado	3.6%	2.6%	2.1%	2.6%	2.1%	2.6%
UnitedHealthcare Insurance Company	0.1%	0.1%	0.1%	0.1%	0.1%	0.1%
Anthem* Rocky Mountain Hospital and Medical Service, Inc.	2.5%	1.8%	1.8%	1.9%	1.9%	2.0%
PacifiCare of Colorado, Inc.	4.2%	5.0%	3.8%	3.6%	3.2%	4.0%
CIGNA Health and Life Insurance Company	0.0%	0.0%	0.0%	0.0%	0.0%	0.0%
HMO Colorado, Inc.	2.8%	2.5%	2.9%	2.7%	2.5%	2.7%
Aetna Life Insurance Company	0.0%	0.0%	0.0%	0.0%	0.0%	0.0%
Rocky Mountain HMO Inc	6.7%	8.3%	7.5%	7.5%	5.3%	7.1%
Humana Insurance Company	4.4%	4.2%	3.6%	3.9%	3.4%	3.9%
Humana Health Plan, Inc.	4.9%	4.8%	4.1%	4.1%	3.9%	4.4%

NET UNDERWRITING GAIN (OR LOSS)

Underwriting Gain or Loss as a Percent of Colorado Earned Health Premiums Annual Financial Statements to the NAIC Table 21						
Company	2014	2015	2016	2017	2018	5 year Average
Kaiser Foundation Health Plan of Colorado	7.1%	12.3%	11.0%	5.1%	11.5%	9.4%
UnitedHealthcare Insurance Company	12.6%	13.2%	12.0%	12.8%	15.0%	13.1%
Anthem* Rocky Mountain Hospital and Medical Service, Inc.	23.2%	20.0%	15.8%	20.0%	26.4%	21.1%
PacifiCare of Colorado, Inc.	13.8%	11.2%	7.4%	9.8%	12.0%	10.8%
CIGNA Health and Life Insurance Company	28.8%	27.0%	28.7%	26.6%	28.7%	28.0%
HMO Colorado, Inc.	20.0%	15.3%	18.1%	10.9%	19.5%	16.8%
Aetna Life Insurance Company	24.8%	21.4%	18.3%	13.7%	18.5%	19.3%
Rocky Mountain HMO Inc	18.3%	8.5%	10.6%	13.3%	18.5%	13.8%
Humana Insurance Company	14.8%	15.8%	18.4%	18.3%	15.0%	16.4%
Humana Health Plan, Inc.	11.8%	10.4%	11.9%	13.8%	19.3%	13.4%

NET INVESTMENT INCOME GAIN (OR LOSS)

Net Investment Gain (or loss) as a Percent of Colorado Earned Health Premium Annual Financial Statements to the NAIC Table 22						
Company	2014	2015	2016	2017	2018	5 year Average
Kaiser Foundation Health Plan of Colorado	1.4%	1.2%	1.3%	1.9%	2.4%	1.6%
UnitedHealthcare Insurance Company	1.4%	1.5%	1.9%	1.1%	1.4%	1.5%
Anthem* Rocky Mountain Hospital and Medical Service, Inc.	4.6%	2.7%	1.5%	0.9%	2.1%	2.3%
PacifiCare of Colorado, Inc.	0.4%	0.4%	0.2%	0.2%	0.4%	0.3%
CIGNA Health and Life Insurance Company	3.1%	3.0%	2.9%	3.0%	2.8%	3.0%
HMO Colorado, Inc.	-0.1%	0.3%	0.3%	0.3%	0.4%	0.2%
Aetna Life Insurance Company	1.0%	0.9%	0.9%	0.9%	1.5%	1.0%
Rocky Mountain HMO Inc	0.6%	0.7%	0.0%	0.2%	0.6%	0.4%
Humana Insurance Company	1.0%	1.0%	0.4%	0.8%	1.5%	1.0%
Humana Health Plan, Inc.	0.4%	0.5%	0.3%	0.4%	0.8%	0.5%

NET INCOME (OR LOSS)

Net Income as a Percent of Colorado Earned Health Premiums Annual Financial Statements to the NAIC Table 23						
Company	2014	2015	2016	2017	2018	5 year Average
Kaiser Foundation Health Plan of Colorado	0.7%	-2.1%	-0.8%	-1.3%	-3.8%	-1.5%
UnitedHealthcare Insurance Company	6.2%	5.2%	4.9%	2.3%	3.4%	4.4%
Anthem* Rocky Mountain Hospital and Medical Service, Inc.	6.0%	3.8%	0.7%	2.4%	-5.7%	1.4%
PacifiCare of Colorado, Inc.	5.0%	4.5%	4.9%	7.2%	3.1%	4.9%
CIGNA Health and Life Insurance Company	14.9%	15.2%	18.2%	6.8%	9.9%	13.0%
HMO Colorado, Inc.	-14.5%	-14.4%	-6.7%	3.5%	13.7%	-3.7%
Aetna Life Insurance Company	4.9%	4.1%	5.2%	3.8%	21.5%	7.9%
Rocky Mountain HMO Inc	-29.5%	-25.1%	-3.7%	-0.9%	5.8%	-10.7%
Humana Insurance Company	3.6%	0.7%	4.7%	3.8%	4.2%	3.4%
Humana Health Plan, Inc.	-11.4%	-16.4%	-7.0%	-4.1%	-20.7%	-11.9%



COLORADO

**Department of
Regulatory Agencies**

Division of Insurance

**Colorado Health Insurance Cost Report
Appendix 1:
Aggregated Company Data**

2018

In accordance with § 10-16-111(4)(a)(b)&(c), C.R.S.





COLORADO
Department of
Regulatory Agencies
Division of Insurance

Division of Insurance
Mike Conway
Commissioner of Insurance

The Division of Insurance is pleased to present the results of the 2018 Colorado Health Insurance Cost Report pursuant to § 10-16-111(4)(a), C.R.S. This report presents an aggregated summary of the costs of providing healthcare in the state of Colorado, as reported by insurance carriers that provide major medical healthcare services in Colorado. This information will be useful to consumers, the industry and the public in determining the factors that drive insurance premiums in our state.

In 2008, the Colorado General Assembly passed and the Governor signed into law House Bill 08-1389 regarding the insurance rates paid by citizens of the state of Colorado. The bill's intent is to ensure that insurance coverage be accessible to all Coloradans, and that in order to provide accessible, affordable coverage, insurance rates should not be excessive, inadequate or unfairly discriminatory. In accordance with Section 9 of the bill, § 10-16-111(4)(a), C.R.S., health insurance carriers doing business in the state of Colorado are required to report a variety of health insurance cost information to the Division of Insurance. The Commissioner of Insurance is required to aggregate this data and publish the information on the Division's website.

To aid in the submission of this data, the Division prepared a Health Insurance Cost Report to be completed by each insurer. A total of 17 insurers representing more than 95% of total written premium submitted this report on their costs for 2018. Below is an aggregated summary of the data collected by the Division of Insurance.

2018 Health Cost Report Aggregated Summary as required by C.R.S. § 10-16-111(4)¹

Statute Requirement	Average Per Company	Total Sum of All Companies	Percent of Colorado Earned Health Insurance Premium
Direct Written Premium for CO Health Insurance Business	\$355,699,133.20	\$6,046,885,264	100.1%
Direct Earned Premium for CO Health Insurance Business	\$355,197,998.07	\$6,038,365,967	100.0%
Authorized Control-level RBC	\$12,715,964.53	\$216,171,397	3.6%
Reserves On Hand	\$26,683,982.28	\$453,627,699	7.5%
Investment Income	\$7,622,032.97	\$129,574,561	2.1%
Net Income	(\$323,622.33)	(\$5,501,580)	-0.1%
Surplus	\$27,461,985.72	\$466,853,757	7.7%
Capital	\$35,752,138.43	\$607,786,353	10.1%
Dividends to Stockholders	\$6,117,767.40	\$104,002,046	1.7%
Executive Compensation allocated to Colorado Premiums	\$15,800,377.79	\$268,606,422	4.4%
Executive Salaries	\$2,544,170.57	\$43,250,900	0.7%
Executive Stock Options	\$9,885,440.28	\$168,052,485	2.8%
Executive Bonuses	\$3,370,766.94	\$57,303,038	0.9%
Administrative Expenditures	\$72,483,493.04	\$1,232,219,382	20.4%
Advertising or Marketing Expenditures	\$1,934,063.37	\$32,879,077	0.5%
Charitable Contributions	\$1,963,029.09	\$33,371,494	0.6%
Dividends Returned to Colorado Policyholders	\$0.00	\$0	0.0%
Expenditures for Disease or Case Management Programs or Patient Education and Other Cost Containment Expenses	\$8,242,428.46	\$140,121,284	2.3%
Insurance Producer Commissions	\$7,426,889.54	\$126,257,122	2.1%
Legal Expenses	\$239,386.23	\$4,069,566	0.1%
Paid Lobbying Expenditures	\$60,091.62	\$1,021,558	0.0%
Staff Salaries	\$13,500,734.34	\$229,512,484	3.8%
Federal Income Taxes	\$10,181,797.65	\$173,090,560	2.9%
State and Local Taxes, Licenses and Fees	\$7,765,696.63	\$132,016,843	2.2%
All Other Administrative Expenses	\$21,169,376.13	\$359,879,394	6.0%
The Cost of Providing or Arranging Healthcare Services	\$302,072,160.88	\$5,135,226,735	85.0%
Administrative Expenses ²	\$72,483,493.04	\$1,232,219,382	20.4%
Medical Expenses ³	\$302,072,160.88	\$5,135,226,735	85.0%
Provision for Profit and Contingencies	(\$19,357,655.85)	(\$329,080,150)	-5.4%

¹The statistics presented are based on the data reported by the companies that responded to a request for information from the Colorado Division of Insurance as required by C.R.S. § 10-16-111(4). Companies were asked to report information on only major medical types of health insurance written in the state of Colorado. The Executive Salaries were reported by companies on a nationwide basis and were allocated to Colorado major medical health business by the Division of Insurance on a direct earned premium basis. The executives included are those reported on the Supplemental Compensation exhibit that accompanies the Annual Financial Statement.

²The total of Advertising or Marketing Expenditures, Charitable Contributions, Dividends Returned to Colorado Policyholders, Expenditures for Disease or Case Management Programs or Patient Education and Other Cost Containment Expenses, Insurance Producer Commissions, Legal Expenses, Staff Salaries, Paid Lobbying Expenditures, Federal Income Taxes, State and Local Taxes, Licenses and Fees and All Other Administrative Expenses is used to calculate the Administrative Expenses.

³The Cost of Providing or Arranging Healthcare Services is equal to a company's Direct Losses Incurred and used to determine the Medical Expenses.

Major Medical Health Benefit Plans

Health Benefit Plans (values shown are in 1,000s)	Individual On Exchange	Individual Off Exchange	Small Group On Exchange	Small Group Off Exchange	Large Group	Total
Premiums						
Colorado Direct Written Premium	\$956,173	\$535,000	\$7,320	\$1,378,720	\$6,046,885	\$8,924,098
Colorado Direct Earned Premium	\$955,034	\$534,887	\$7,270	\$1,377,357	\$6,038,366	\$8,912,914
Administrative Expenses¹						
Administrative Expenses	\$248,958	\$189,968	\$4,087	\$373,841	\$986,851	\$1,803,705
The Cost of providing or arranging healthcare services						
Incurred Losses	\$751,803	\$384,526	\$5,103	\$1,138,014	\$5,135,227	\$7,414,673
Administrative Ratio	26.07%	35.52%	56.22%	27.14%	16.34%	20.24%
Actual Benefits Ratio	78.72%	71.89%	70.19%	82.62%	85.04%	83.19%
Average Provision for Profit and Contingencies	-4.79%	-7.40%	-26.41%	-9.77%	-1.39%	-3.43%

Health Benefit Plans Covered Lives (Table shows actual numbers)	Individual On Exchange	Individual Off Exchange	Small Group On Exchange	Small Group Off Exchange	Large Group	Total
Number of Colorado covered lives as of 12/31/2017	144,211	107,874	3,165	257,970	567,344	1,080,564
Number of Colorado covered lives as of 12/31/2018	133,150	71,084	1,334	272,626	579,962	1,058,157
Number of Colorado individual subscribers /certificateholders /policyholders as of 12/31/2017	95,518	62,624	2,163	153,371	298,604	612,280
Number of Colorado individual subscribers /certificateholders /policyholders as of 12/31/2018	90,851	43,686	877	161,253	304,394	601,061
Number of Member Months in 2018	1,707,697	954,129	21,230	3,255,357	6,981,784	12,920,196
Companies with Earned Premiums in 2018	10	14	4	11	15	17

¹The total of Advertising or Marketing Expenditures, Charitable Contributions, Dividends Returned to Colorado Policyholders, Expenditures for Disease or Case Management Programs or Patient Education and Other Cost Containment Expenses, Insurance Producer Commissions, Legal Expenses, Staff Salaries, Paid Lobbying Expenditures, Federal Income Taxes, State and Local Taxes, Licenses and Fees and All Other Administrative Expenses is used to calculate Administrative Expenses.

Trend - Colorado Health Insurance

“Trend” or “trending” means any procedure for projecting losses to the average date of loss, or of projecting premium or exposures to the average date of writing. Companies reporting trend information must use the best assessment and allocation methods they can to assign portions of total medical trend to those categories of interest to the Division and the public. Information in this section represents an estimate of what portion of total trend each cost category that follows is responsible for. The tables below demonstrate the number of companies that submitted Medical trend in the Health Cost Survey out of 17 companies.

Medical Trend	Average Medical Trend due solely to Provider Price Changes	Average Medical Trend due solely to Utilization Changes	Average Medical Trend due solely to Cost-shifting	Average Medical Trend due solely to New Medical Procedures and Technology	Average Total Medical Trend
Individual on Exchange	3.63%	6.89%	3.14%	1.02%	13.69%
Individual off Exchange	4.25%	10.15%	0.37%	1.14%	15.30%
Small Group on Exchange	2.18%	6.87%	-2.54%	0.00%	6.44%
Small Group off Exchange	4.02%	3.39%	-0.02%	0.26%	7.89%
Large Group	6.99%	0.86%	0.06%	0.38%	8.02%

Total Medical Trend by Year by Type of Health Insurance

Pharmaceutical Trend	Average Rx Trend due solely to Pharmaceutical Price Changes	Average Rx Trend due solely to Utilization Changes	Average Rx Trend due solely to Cost-shifting	Average Rx Trend due solely to New Drugs	Average Total Rx Trend
Individual on Exchange	3.89%	8.82%	6.41%	5.54%	21.66%
Individual off Exchange	10.03%	12.57%	3.54%	4.56%	30.01%
Small Group on Exchange	7.44%	5.67%	6.76%	2.72%	24.41%
Small Group off Exchange	8.62%	0.00%	1.87%	2.10%	11.69%
Large Group	2.61%	1.38%	2.67%	3.94%	10.17%

Total Pharmaceutical Trend by Year by Type of Health Insurance

Major Medical Health Coverage ¹	Earned Premium	Incurred Losses	Loss Ratio
Individual Coverage	\$1,489,258,191	\$1,137,994,664	76.41%
Small Group Coverage	\$1,384,626,384	\$1,143,117,704	82.56%
Large Group Coverage	\$3,789,968,886	\$3,434,674,873	90.63%
Colorado Major Medical Totals	\$6,663,853,461	\$5,715,787,241	85.77%

Colorado Major Medical Health Benefit Plan Coverage Summary

Other Health Coverages ²	Written Premium	Earned Premium	Incurred Losses	Loss Ratio
Medicare Supplement	\$75,054,095	\$75,008,112	\$54,203,524	72.26%
Title XVIII Medicare Advantage	\$3,438,441,797	\$3,430,050,044	\$3,056,510,272	89.11%
Title XIX Medicaid	\$596,205,778	\$601,591,922	\$505,316,480	84.00%
All Other Coverages	\$1,150,193,376	\$1,151,703,165	\$1,122,652,738	97.48%
Other Health Coverages Total	\$5,259,895,046	\$5,258,353,243	\$4,738,683,014	90.12%

Colorado other Health Plan Coverage Summary

¹Data taken from all supplemental health exhibits submitted to the NAIC.

²Data taken from state filing pages submitted to the NAIC.



COLORADO

**Department of
Regulatory Agencies**

Division of Insurance

**Colorado Health Insurance Cost Report
Appendix 2:**

**Definitions and Legislative history
2018**

In accordance with § 10-16-111(4)(a)(b)&(c), C.R.S.



Table of Contents

- HISTORY AND INCORPORATED DATA.....4**
- AFFORDABLE CARE ACT 4
- CONNECT FOR HEALTH COLORADO 5
- TYPES OF HEALTHCARE AND MARKET DIVISION.....6**
- TYPES OF HEALTHCARE PLANS..... 6
- TYPES OF PROVIDER ARRANGEMENTS..... 7
- TYPES OF HEALTH INSURANCE PLANS REGULATED BY THE STATE GOVERNMENT THROUGH THE COLORADO DIVISION OF INSURANCE (DOI) 7
- Individual Market 7
- EMPLOYER-PROVIDED INSURANCE 7
- Small Group Market 8
- Large Group Market 8
- Connect for Health Colorado..... 8
- TYPES OF HEALTH INSURANCE PLANS REGULATED BY THE FEDERAL GOVERNMENT 9
- SELF-INSURED PLANS 9
- HEALTH FIRST COLORADO, COLORADO’S MEDICAID PROGRAM 9
- CHILD HEALTH PLAN PLUS (CHP+)..... 9
- MEDICARE 9
- Senior Health Insurance Assistance Program (SHIP) 10
- OTHER 10
- REGULATORY ROLE OF THE DIVISION OF INSURANCE 11**
- CONSUMER PROTECTION 11
- FINANCIAL SOLVENCY 11
- MARKET REGULATION 12
- RATE REGULATION & RATE REVIEW 12
- SUBMISSION OF RATE FILINGS IN COLORADO 12

Prior Approval	13
File and Use	13
COLORADO MEDICAL TREND IN DETAIL	14
ADMINISTRATIVE EXPENSES.....	15
RATE CHANGES.....	15
COST SHIFTING	16
CAPITAL AND SURPLUS	16
MEDICAL AND HOSPITAL EXPENSES.....	16
CLAIMS ADJUSTMENT EXPENSES	17
NET UNDERWRITING GAIN (OR LOSS)	17
NET INVESTMENT INCOME GAIN (OR LOSS).....	17
NET INCOME (OR LOSS)	17
GLOSSARY OF TERMS.....	18

History and Incorporated Data

In 2008, the Colorado General Assembly enacted House Bill 08-1389 requiring the Commissioner of Insurance to report annually on the cost of health care, the factors that drive the cost of health care and the financial status of health carriers (including health maintenance organizations (HMOs) in Colorado.

March 2014 marked the fourth anniversary of the federal Affordable Care Act (ACA), which ushered in new consumer protections and benefits in health insurance that started in 2010. Major changes, including a requirement for most people to have health insurance and government subsidies to help many afford the costs, went into effect in 2014. Moreover, reforms adopted in Colorado in 2012 became effective at the beginning of 2014 including the establishment of a health insurance exchange where small employers and individuals can more easily shop for insurance, and on ways to control costs while improving health care in public programs.

The information in this report covers the top 95% of carriers by written premium in the Colorado market filing the Supplemental Health Exhibit with the National Association of Insurance Commissioners (NAIC), of which the Colorado Division of Insurance is a member. This is the most recent, complete and reliable data available given the timing of this report and its primary source. A significant portion of the data for this report was gathered from the carriers' Annual Financial Statements, which are filed in March; and the information gathered from the Colorado Health Cost Survey, completed in June of each year.

AFFORDABLE CARE ACT

Under the Affordable Care Act (ACA), most Americans were required to buy health insurance starting in 2014. Also in 2014, Medicaid expanded to serve more of the lowest-income Americans, and tax credits were granted to reduce the costs of private insurance for millions of lower and middle income families, primarily those lacking employer-sponsored insurance. As most people were required to buy insurance starting in 2014, insurance companies are no longer allowed to deny coverage to anyone based on pre-existing health status or conditions.

Once reforms are fully implemented, federal officials estimate that 93 percent of the U.S. population will be insured by 2019, an increase of 10 percent. If accurate, an additional 32 million Americans will be covered.

Affordable Care Act Reforms, 2014

- Most taxpayers must have basic coverage or pay an annual tax penalty.
- Federal tax credits will help many more people afford private coverage.
- Some large employers (more than 100 employees) will pay per-employee penalties under certain circumstances if they do not offer certain basic health benefits.
- Medicaid programs will cover many more people.

- Every state uses its own exchange or uses the federal exchange, each offering one-stop shopping to consumers who will be able to compare prices, benefits, and health plan performance on easy-to-use websites. People who want to take advantage of tax credits must purchase insurance through an exchange.

CONNECT FOR HEALTH COLORADO

The Affordable Care Act requires that all states have exchanges. In 2011, Colorado passed Senate Bill 11-200, known as the “Colorado Health Benefit Exchange Act.

Connect for Health Colorado is a central marketplace where consumers and small employers can shop for health insurance plans and may access federal tax credits to help them pay for coverage. Through the exchange, Coloradans are able to compare their coverage options and enroll in a plan that best fits their needs.

Beginning in October 2013, exchange services were available to Coloradans through a Web portal, toll-free phone number, and other formats. Key services include:

- Central place to shop for insurance plans, with easy-to-compare information on quality and price;
- Seamless eligibility and enrollment process for individual and small group plans and Medicaid;
- Access to federal tax credits and other assistance available to help make coverage more affordable;
- Community-based assistance through navigators (a.k.a. health coverage guides) and insurance agents;
- Innovative plan options and central billing and payment for small employers.

Types of Healthcare and Market Division

TYPES OF HEALTHCARE PLANS

- Exclusive Provider Organization (EPO) plan - A more restrictive type of preferred provider organization plan under which employees must use providers from the specified network of physicians and hospitals to receive coverage; there is no coverage for care received from a non-network provider except in an emergency situation.
- Flexible benefits plan (Cafeteria plan or IRS 125 Plan) - A benefit program under Section 125 of the Internal Revenue Code that offers employees a choice between permissible taxable benefits, including cash, and nontaxable benefits such as life and health insurance, vacations, retirement plans and child care. Although a common core of benefits may be required, the employee can determine how his or her remaining benefit dollars are to be allocated for each type of benefit from the total amount promised by the employer. Sometimes employee contributions may be made for additional coverage.
- Flexible spending accounts or arrangements (FSAs, for healthcare) - Accounts offered and administered by employers that provide a way for employees to set aside, out of their paycheck, pre-tax dollars to pay for the employee's share of insurance premiums or medical expenses not covered by the employer's health plan. The employer may also make contributions to an FSA. Typically, benefits or cash must be used within a given benefit year or the employee loses the money. Flexible spending accounts can also be provided to cover dependent care expenses, but those are different types of accounts and must be established separately from medical FSAs.
- Health Maintenance Organization (HMO) plan - A health plan where comprehensive health coverage is provided through a specified network of physicians and hospitals for a fixed premium with no deductibles, only visits within the network are covered, and a primary care physician within the network handles referrals.
- Health Savings Accounts (HSA) - Accounts offered by financial institutions, in coordination with high deductible health plans. These are similar to bank accounts, and provide a way for consumers to set aside pre-tax dollars to pay for the insurance premiums or medical expenses not covered by the health plan. If provided by an employer, the employer may also make contributions to an HSA. The money deposited into an HSA does not have to be used by any deadline, such as within a calendar year, and is portable if the person changes employment. HSAs are medical savings accounts that earn interest and can be used to pay for current medical expenses or saved for future medical expenses.
- Indemnity plan - A type of medical plan that reimburses the patient and/or provider as expenses are incurred.
- Point-of-service (POS) plan - A POS plan is an "HMO/PPO" hybrid; sometimes referred to as an "open-ended" HMO when offered by an HMO. POS plans resemble HMOs for in-network services. Services received outside of the network are usually reimbursed in a manner similar to conventional indemnity plans (e.g., provider reimbursement based on a fee schedule or usual, customary and reasonable charges).

- Preferred Provider Organization (PPO) plan - An indemnity plan where coverage is provided to participants through a network of selected health care providers (such as hospitals and physicians). The enrollees may go outside the network, but would incur larger costs in the form of higher deductibles, higher coinsurance rates, or non-discounted charges from the providers.

TYPES OF PROVIDER ARRANGEMENTS

A health care provider is any individual or medical facility which provides health services to health care consumers (patients). Plans may have different options of health care provider arrangements from which to choose.

- Exclusive providers - Enrollees must go to providers associated with the plan for all non-emergency care in order for the costs to be covered.
- Any providers - Enrollees may go to providers of their choice with no cost incentives to use a particular subset of providers.
- Mixture of providers - Enrollees may go to any provider but there is a cost incentive to use a particular subset of providers.

TYPES OF HEALTH INSURANCE PLANS REGULATED BY THE STATE GOVERNMENT THROUGH THE COLORADO DIVISION OF INSURANCE (DOI)

The Division of Insurance has primary regulatory authority over commercial health carriers in Colorado. This does not include self-insured employer health plans, Medicare or Medicaid, which are regulated by the federal government. There are four primary markets for health insurance that are subject to regulation by the Colorado DOI: the individual, the small group, and the large group markets as well as plans sold through the Connect for Health Colorado Marketplace. Each market operates under different regulations.

Individual Market

In Colorado, the Division of Insurance regulates the individual insurance market. Before 2014 carriers in the individual market were allowed to underwrite based on health status and there were fewer mandated benefits that were to be covered in a policy. Colorado does not require health insurers in the individual market to sell standardized policies. However, Colorado does require all health plans to cover certain benefits such as mammograms, prostate cancer screening and diabetes treatment. On January 1, 2014, health carriers were no longer allowed to underwrite based on health status. Also, for individual and small group business all carriers must provide the Colorado required essential health benefits.

EMPLOYER-PROVIDED INSURANCE

The group health plan market in Colorado is large, with all employer provided and bona fide association (association) provided health plans making up this sector. Employee benefit plans can be

either fully insured or self-funded and either sold through the small group or large group markets. Self-funded plans may also be called self-insured or non-insured. Under a fully-insured employee benefit plan, the employer purchases health coverage from an insurance company and the insurance company assumes the risk for payment of claims. The insurance company is regulated under state law by the DOI, and is subject to rules about mandated benefits, network adequacy, prompt payment of claims, etc.

Sometimes insurance companies act as an administrator to process claims for an employer self-funded plan. In these circumstances, the insurance company is referred to as a “third party administrator” (TPA), but the health plan is not subject to state insurance laws and regulations.

Small Group Market

A small group health plan is a health plan offered to employer groups. Prior to 2014 they were defined as having no more than 50 employees down to and including business groups of one (BG-1s). Beginning January 1, 2015, this was redefined in Colorado to mean business groups of 2 to 50, as BG-1s were eliminated. After January 1, 2016, it means groups of two to one hundred. Small group plans have mandated benefits: they must be guaranteed renewable and premium rating can only be based on smoking status, industrial classification, age, family size and geographic region.

Large Group Market

A large group health plan is a fully insured health plan offered to employer groups of more than 100 employees. For regulation purposes, association health plans are treated as large group plans in Colorado. Large group employer plans and associations are less regulated than small group plans. It is generally assumed that purchasers of large group policies have more ability to negotiate insurance and may have the ability to hire consultants to assist with the process. Large groups can use their size to negotiate, so employer-sponsored plans typically are able to include a wide range of plan options.

Connect for Health Colorado

Connect for Health Colorado is a marketplace that opened in October 2013 to help individuals, families and small employers across Colorado purchase health insurance and apply for new federal financial assistance to reduce costs. In addition to the shopping website, Connect for Health Colorado offers a statewide customer support network of Customer Service Center Representatives, Health Coverage Guides and licensed agents/brokers to help Coloradans find the best health plan for their needs. Connect for Health Colorado is the only place where Coloradans can apply for advance premium tax credits and cost-sharing reductions to help pay for commercial insurance coverage. Connect for Health Colorado is a non-profit entity established by a state law, Senate Bill 11-200, that was passed in 2011. The organization, legally known as the Colorado Health Benefit Exchange, is governed by a Board of Directors (the Insurance Commissioner is a non-voting member) with additional direction from a committee of state legislators, known as the Legislative Health Benefit Exchange Implementation Review Committee. The DOI does not regulate Connect for Health Colorado, but rather regulates the plans (individual and small group) sold through the Connect for Health Marketplace. Connect for Health Colorado began by selling plans that were effective January 1, 2014.

TYPES OF HEALTH INSURANCE PLANS REGULATED BY THE FEDERAL GOVERNMENT

SELF-INSURED PLANS

Many large and some small employers create “self-funded” health plans for their employees. In these self-funded plans, the employer keeps the risk to collect premiums and then pay the claims, but often hires a plan administrator to process the claims (also known as a third-party administrator or TPA). However, these employers have the ability to design their own plans. When an employer self-funds the plan, it is generally not subject to state laws and regulations so state mandated benefits, state prompt payment rules or standards of network adequacy do not apply. Self-insured plans are regulated by the federal government under the Employees’ Retirement Income Security Act (ERISA).

Some employers buy stop-loss insurance (also known as excess loss insurance) to limit the risk that they incur by having a self-insured health plan. This coverage is usually available in one of two forms: specific stop-loss coverage, which covers claims above a specified limit on an individual employee basis; and aggregate stop-loss coverage, which initiates coverage when the employer’s total aggregate health claims reach a specified threshold. The Division *does* regulate stop-loss (excess loss) policies, but does not regulate the self-funded employer health plan that it insures.

HEALTH FIRST COLORADO, COLORADO’S MEDICAID PROGRAM

Medicaid is a federal program that is administered by the state and provides health care for low-income families with children and certain individuals with disabilities. Each state has its own eligibility requirements that depend on income, age, disability and medical need.

CHILD HEALTH PLAN PLUS (CHP+)

Child Health Plan Plus is low cost public health insurance for Colorado’s uninsured children and pregnant women who earn too much to qualify for Medicaid, but cannot afford private health insurance.

Colorado adopted rules to comply with several of the Children’s Health Insurance Program Reauthorization Act (CHIPRA) provisions in 2009, including a requirement that newborns whose birth was paid for by Medicaid no longer need to prove their citizenship after one year of eligibility ends. In addition, Colorado must accept certain tribal documents as establishing citizenship.

MEDICARE

Medicare is a federally administered health insurance program for people over age 65, those under 65 with certain disabilities and people of all ages with End-Stage Renal Disease. Medicare is paid for through payroll taxes on working Americans as well as premiums from its members that are based on the type of coverage they have. It provides comprehensive coverage, including prescription drugs. Many private insurers offer Medicare supplement plans to cover the costs that are not covered under the program, and these plans are regulated by the Colorado DOI.

Senior Health Insurance Assistance Program (SHIP)

The Senior Health Insurance Assistance Program (SHIP) is not in itself a health plan. Instead it is a program within the Division of Insurance that helps people enrolled in Medicare, about to become eligible for Medicare, or caretakers of Medicare beneficiaries with questions about health insurance. SHIP provides free counseling. Topics addressed by the program include Medicare, Medicare supplement insurance (Medigap), Medicare Part D prescription drug plan coverage, Medicare HMOs also known as Medicare Advantage Plus, Medicaid assistance for people on Medicare, and long-term care insurance. The program trains counselors through regional organizations around the state to provide individual counseling and assistance, public education presentations about Medicare-related health insurance and Medicare fraud and distribution of printed materials about these health insurance programs.

OTHER

In addition to the health plans mentioned above, there are several other government-run plans that subsidize or provide health care to Coloradans. There are health care services are offered to Colorado veterans, current military personnel and Native American populations.

Regulatory Role of the Division of Insurance

Insurance regulation is structured around several key functions, including company licensing, producer licensing, product regulation, market conduct, financial regulation, and consumer services.

The Division of Insurance serves the public interest through the following areas of responsibilities:

- Provide a prompt, effective complaint resolution process for Colorado consumers.
- Provide prompt and effective service and education to Colorado consumers, the public and regulated entities.
- Promote and preserve a sound, competitive insurance marketplace through effective state regulation.
- Promote access to affordable insurance that allows for adequate consumer choice.
- Promote and develop more streamlined, uniform and efficient regulatory processes.
- Ensure that management systems are in place to operate the Division efficiently and effectively.

The Division's role in regulating the different insurance market segments varies widely, but there are four major responsibilities that are universal: consumer protection, financial solvency, market regulation and rate regulation.

CONSUMER PROTECTION

The responsibility of consumer protection is accomplished through addressing consumer complaints, verifying the financial ability of the health insurer to pay claims through financial examinations, checking that an insurer's marketing practices are honest and approving only premium rate changes that are not excessive, inadequate or unfairly discriminatory.

Health insurers are subject to a wide range of consumer protections. Through statutes and regulations, the Division assures that health insurers are providing health insurance in a fair, non-discriminatory way, and according to the law of the State of Colorado.

In determining if a rate is excessive or inadequate, the Commissioner may consider profits, dividends, annual financial statements, subrogation funds credited, investment income or losses, unearned premium reserve, reserve for losses, surpluses, executive salaries, expected benefits ratios, and any other appropriate actuarial factors as determined by accepted actuarial standards of practice.

FINANCIAL SOLVENCY

Financial Regulation insures carriers can pay claims. The state enforces financial solvency and consumer protection requirements for all health insurers. Financial regulation provides crucial safeguards for consumers. Financial regulation is maintained by states at the National Association of Insurance Commissioners (NAIC), the world's largest insurance financial database, which provides a 15-year history of annual and quarterly filings for over 5,000 insurance companies.

Periodic financial examinations occur on a scheduled basis. State financial examiners investigate a company's accounting methods, procedures and financial statement presentation. These exams verify

and validate what is presented in the company's annual statement to ascertain whether the carrier is in good financial standing.

When an examination of financial records shows a company to be financially impaired, the state insurance department takes control of the company. Aggressively working with financially troubled companies is a critical part of the regulator's role. In the event the company must be liquidated or becomes insolvent, the states maintain a system of financial guaranty funds that cover consumers' personal losses.

MARKET REGULATION

Market regulation attempts to ensure fair and reasonable insurance prices, products and trade practices in order to protect consumers. With improved cooperation among states and uniform market conduct examinations, regulators hope to ensure continued consumer protections at the state level.

Market conduct examinations occur on a routine basis, but also can be triggered by complaints against an insurer. These exams review agent-licensing issues, complaints, types of products sold by the company and agents, agent sales practices, proper rating, claims handling and other market-related aspects of an insurer's operation.

When violations are found, the Division of Insurance makes recommendations to improve the company's operations and to bring the company into compliance with state law. In addition, a company may be subject to civil penalties and/or certificate suspension or revocation.

RATE REGULATION & RATE REVIEW

Rates are reviewed by the Division of Insurance to determine if rates are "excessive, inadequate or unfairly discriminatory". "Excessive Rates" occur when unreasonably high profits result or expenses are high in relation to the benefits provided. "Inadequate Rates" are where rates are not sufficient to pay losses and expenses, or where the use of the rates will result in a monopoly. "Unfairly Discriminatory" rates occur when the product prices do not equitably reflect differences in risks.

Rate standards are included in state laws and are the foundation for the acceptance, denial or adjustment to rate filings. Typical rate standards included in state laws require that benefits are reasonable in relation to the premium charged. This is usually accomplished by reference to an expected loss ratio which is the ratio of the expected incurred claims to the expected earned premiums. The loss ratio standards are either specified in law or set by the regulatory authorities. For example, the minimum loss ratio for Medicare Supplement insurance is 65% for individual business and 75% for group business. The expected loss ratio is calculated by projecting earned premiums and incurred claims, and determining the lifetime loss ratio.

SUBMISSION OF RATE FILINGS IN COLORADO

All companies must submit rate filings whenever the rates charged to new or renewing policyholders or certificate-holders differ from the rates on file with the Division of Insurance. Included in this

requirement are changes due to periodic recalculation of experience, change in rate calculation methodology or change(s) in the trend or other rating assumptions.

All companies must submit a rate filing when the rates are changed on an existing product, even if the rate change only pertains to new business. In addition when rating factors are used which automatically change rates on a predetermined basis, such as trend, durational factors, or the Index Rate for small group business, they must submit a rate filing on at least an annual basis for continued appropriateness. These rate filings must contain detailed support as to why the assumptions continue to be appropriate

The following are the two types of health rate procedures in Colorado.

Prior Approval

Prior Approval is a filing procedure that requires a rate change to be affirmatively approved by the Commissioner prior to distribution, release to agents, and collection of premium, advertising or any other use of the rate. Under no circumstances shall the carrier provide insurance coverage under the rates until after the proposed effective date specified in the rate filing. Carriers may bill members but not require the member to remit premium, prior to the effective date of the rate change.

In 2008, Colorado passed HB 08-1389, which requires the carrier to submit to the Colorado Division of Insurance for prior approval its expected health rate increases at least 60 days prior to the proposed implementation of the rates.

The Division reviews the proposed rate change and supporting documentation to determine whether the company has provided all the information required by law and whether or not the requested rate is justified. If a requested rate increase is not justified, HB08-1389 gives the Division the authority to disapprove the rate or to request additional supporting documentation from the carrier. Also, if a filing requesting a rate increase is incomplete (i.e., carrier did not provide all the required justification), the filing may be disapproved. However, if the rate increase is justified and meets all applicable laws and regulations, the Division will approve the filing.

File and Use

File and Use is a filing procedure that requires rates and rating data to be filed with the Division of Insurance concurrent with or prior to distribution, release to producers, and collection of premium, advertising or any other use of the rates. Under no circumstance shall the carrier provide insurance coverage under the rates until after the proposed effective date. Carriers may bill members, but not require the member remit the premium prior to the effective date of the rate change. Many types of insurance allow File and Use on any rate filing that does not include a rate increase.

Colorado Medical Trend in Detail

Medical cost trend is the projected increase in the costs of medical services assumed in setting premiums for health insurance plans. Insurance companies use medical cost trend to estimate what the same plan would cost in the next year. Medical cost trend is influenced primarily by:

- Unit cost inflation or changes in the intensity and the unit price of medical products and services.
- Utilization increases, or changes in the volume of services used, which may be affected by demographic changes, advertising, and the use of new technology.

Medical expenses are subject to inflation, in the same way as most products and services. Medical trend is higher than normal inflation primarily because of increases in utilization. Utilization is the measurement of the use of health insurance by the insured, stated in terms of the average number of claims per insured. In general the cost of each service tends to rise with the overall inflation level but each additional service a policyholder receives adds directly to the cost of health insurance. Additionally as the intensity of the service increases the cost increases.

For example, as more diagnostic imaging shifts from using older technologies such as x-rays to more advanced imaging such as MRIs, the overall costs rise much faster than inflation. This is because of the cost differential between an x-ray and an MRI. Even though there may not have been a large increase in the cost of x-rays or MRIs because the overall number of services has shifted to the more expensive technology overall price rises faster than inflation.

This inflation is generally built into the premium rate increases that health carriers apply to their products, and it is referred to as medical trend. Medical trend is composed of four components: 1) provider price increases, 2) utilization changes, 3) cost shifting and 4) the introduction of new procedures and technology. In addition, these numbers will vary with benefit plan design.

Cost trend may vary from market to market, depending on the level of provider and health plan competition and the regional economy. The individual market tends to be the most volatile so the actual population projected varies the most from year to year. In addition, individuals will tend to have plans with more policyholder cost sharing. These plans initially cost less but have higher cost increases as medical inflation erodes the effectiveness of the policyholder cost sharing. Finally, applicants in the individual market tend to have a reason for applying to the individual market and therefore may be more likely to develop medical conditions after purchasing the policy.

The opposite effects are seen in the large group market. Populations tend to be fairly stable and have lower cost sharing. Employers also seek to enroll as many employees as possible, thereby spreading the risk of employees with medical conditions across a broader population.

Under the Affordable Care Act, an insurance company is required to rebate premiums when it fails to spend at least 80 percent of premiums collected in a state's small group and individual markets on medical care and quality improvement. It must spend at least 85 percent of premiums on these activities in a state's large group market or pay a rebate. Under federal regulations issued in late

November 2010, insurance companies that issue individual, small group, or large group coverage have to report the following for each market in each state in which they do business:

- Total earned premiums
- Total reimbursement for clinical services
- Total spending on quality improvement activities
- Total spending on all other non-claims costs, excluding federal and state taxes and fees

The report is due to the federal government on June 1 of every year, and the information received from the report is public and posted on the Center for Medicare & Medicaid Services website.

Starting 2014, insurers that failed to meet these standards must rebate to enrollees an amount proportional to the amount of premiums paid the previous calendar year. For example, if an insurer had a 75 percent medical loss ratio in the small group market, the insurer would have to rebate 5 percent of the amount of premiums paid by each enrollee in a small group plan. In other words, a \$1,000 premium payment would result in a \$50 rebate. Rebates in the group market will be paid to the employer. Under federal regulations issued in December 2011, employers must use the rebates they receive for the benefit of enrollees. For example, an employer might reduce employees' future premium contributions. Rebates must be paid by August 1 each year.

NOTE: The federal medical loss ratio is not the same as Colorado's benefit ratio, in that the federal MLR makes modifications to its calculation, i.e. subtracting out federal and state taxes and licensing and regulatory fees, as well expenses to improve the quality of care.

ADMINISTRATIVE EXPENSES

The administrative expenses of an insurer represent the cost of operating the business, including salaries, producer commissions, dividends to policyholders, legal expenses, lobbying expenses, advertising or marketing expenses, charitable contributions, and taxes, licenses and fees. The Colorado Health Insurance Cost Report asked insurers to provide the amount they paid for each of these types of expenses in Colorado each year. If an insurer was unable to isolate a particular expense so that it represented the portion attributable to their Colorado health insurance business, the insurers were asked to allocate it using earned premium. Administrative expenses for HMOs are consistently lower than for non-HMOs. One reason for this is that expenses which other insurers record as administrative costs are bundled into claims costs in the HMO integrated system.

RATE CHANGES

Colorado law requires carriers to file any health premium rate changes with the Division of Insurance. These rate filings are reviewed by analysts and actuaries at the Division to determine whether they are in compliance with state insurance regulations. The minimum standard for the approval of a premium rate change is that the new rates must not be excessive, inadequate or unfairly discriminatory. The most common reasons for a carrier to submit rate filings include but are not limited to;

- Increase in benefits
- Reduction in benefits

- Change needed to meet projected losses
- Trend only
- Change in rating methodology
- New product (initial offering as opposed to rate revision)
- New options/methodology
- Mandated benefits

COST SHIFTING

Private health insurance premiums are higher, to some degree, because different populations pay different amounts for the same care. Uninsured individuals and members of government programs such as Medicaid and Medicare, typically pay less than commercially insured populations. Commercial insurers pay more for the services provided by doctors and hospitals to provide an adequate overall margin. In turn, the costs that are shifted to insurers are passed on in the form of higher premiums to consumers and businesses that purchase health coverage. A detailed examination of medical trend, cost shifting, and many of the other factors that are driving the increase in health costs, are beyond the scope of this report.

CAPITAL AND SURPLUS

By law, insurers must maintain minimum levels of capital and surplus to ensure they will be able to meet financial obligations to policyholders. Shareholders' interest is second to that of the policyholders. Capital and surplus requirements vary by insurer depending on the volume of business, investment portfolio and other risk factors unique to each insurer's situation. These values protect the interests of the company's policyholders in the event the company develops financial problems. The policyholder's benefits are thus protected by the insurance company's capital. All insurers must maintain capital and surplus. For-profit insurers report capital and surplus amounts; not-for-profit insurers report only surplus. The combination of capital and surplus is the amount an insurer's assets exceed its liabilities.

Capital is the amount of equity of the shareholders for a stock insurance company.

Surplus is the amount that represents the assets a company has over and above its reserves and other financial obligations.

Risk-based capital (RBC) is a method for evaluating an insurer's surplus in relation to its overall business operations according to its size and lines of business written. An insurer's RBC is calculated by applying factors to various assets, premium, and reserve items. The calculation produces the "authorized control level." The RBC ratio is the insurer's surplus divided by the authorized control level. The state is authorized to take regulatory action against an insurer that fails to maintain a RBC equal to or greater than 200 percent.

MEDICAL AND HOSPITAL EXPENSES

A **Medical Loss Ratio** is the percentage of health insurance premiums used to cover the cost of providing health care services. This is calculated by taking the ratio of the cost of providing health care divided by the earned premium, and is represented as a percentage. If the medical loss ratio is 85%,

this means that 85% of premiums were spent on providing health care to policyholders. The carrier's goal is to keep this ratio well below 100% since the carrier's profit is generated from the premiums that remain after they have paid both the cost of providing health care and the administrative expenses incurred from operating the business.

A **Medical expense** is the cost of diagnosis, cure, mitigation, treatment, or prevention of disease, and the costs for treatments affecting any part or function of the body. These expenses include payments for medical services rendered by physicians, surgeons, dentists, and other medical practitioners. They include the costs of equipment, supplies, and diagnostic devices needed for these purposes.

CLAIMS ADJUSTMENT EXPENSES

Claims Adjustment Expenses are expenses attributable to claims settlement, including cost-containment expenses. Included in claims adjustment expenses are all expenses directly attributed to settling and paying claims from the insured.

NET UNDERWRITING GAIN (OR LOSS)

Net underwriting gain (or loss) is the difference between earned premiums and the sum of incurred loss and loss adjustment expenses, other incurred underwriting expenses and policyholder dividends. Net underwriting gain (or loss) is also known as underwriting income.

NET INVESTMENT INCOME GAIN (OR LOSS)

Net Investment Income is the income received from pre-tax investment assets such as bonds, stocks, mutual funds, loans and other investments less related expenses. The individual tax rate on net investment income depends on whether it is interest income, dividend income or capital gains. Net investment income gain or loss includes all income earned from invested assets minus expenses associated with investments, plus the profit or loss realized from the sale of assets.

NET INCOME (OR LOSS)

Net Income is any money that remains from the company's revenues after deductions have been made for sales costs, operating expenses (including claims) and taxes.

Glossary of Terms

Accident and Health Insurance - A type of coverage that pays benefits, sometimes including: reimbursement for loss of income, in case of sickness, accidental injury or accidental death.

Administrative Expenses - Expenses an insurer incurs to run its business. This includes all expenses that are not directly attributed to settling and paying claims of members. Examples are commissions, marketing and advertising expenses, and salaries of non-claims personnel.

Adverse Selection - The process where only those at greater risk seek insurance. This drives prices up or availability down. For example, those with severe health problems want to buy health insurance, or people going to a dangerous place such as a war zone want to buy more life insurance. In order to combat the problem of adverse selection, insurance companies try to reduce their exposure to large claims by either raising premiums or limiting the availability of coverage to such applicants.

Association - see Bona fide association below

Benefits - The amount of money paid under health insurance plans to cover the costs of healthcare. "Benefits" is a term also used to describe the services that could be covered in a health policy, such as doctor services, hospital services, laboratory tests, preventive care, prescription medicine and emergency care. Different policies may offer different benefit coverage, all of which will be specified in the policy.

Benefits Ratio - The ratio of the value of the actual benefits provided, not including dividends, to the value of the actual premiums, not reduced by dividends, over the entire period for which rates are computed to provide coverage. "Benefits ratio" is also known as "loss ratio."

Bona fide association - An association that offers health insurance coverage available to all association members without placing any restrictions or requirements around health insurance for membership status and has been actively in existence for at least five years. A Bona fide association may purchase insurance in the large group market.

Claim - A formal request for payment related to an event or situation that is covered under an in-force insurance policy.

Claim Adjustment Expenses - The cost of settling, recording and paying claims.

Coinsurance - A form of medical cost sharing in a health insurance plan that requires an insured person to pay a stated percentage of medical expenses after the deductible amount, if any, was paid.

Collectively Renewable - An insurer may not cancel an individual policy under any circumstances. However, the insurer may cancel all policies in similar rating classes.

Copayment - A form of medical cost sharing in a health insurance plan that requires an insured person to pay a fixed-dollar amount when a medical service is received. The insurer is responsible for paying the balance of the charge to the medical service provider.

Credit Insurance - Insurance on a debtor to provide indemnity for payments or loan balance, or any combination thereof, becoming due on a specific loan or other credit transaction upon contingency for which the insurance is obtained.

Dividends - The distribution of earnings to the carrier's owners during the year. If an insurer is publicly held, then the dividends would be returned to stockholders. If the insurer is a mutual company, the dividends are returned to the policyholders, who are considered the owners of the company.

Division - The Colorado Division of Insurance.

Domestic - Designates those companies incorporated or formed in this state.

Earned Premiums - The portion of the total premium amount corresponding to the coverage provided during a given period of time.

ERISA (Employees' Retirement Income Security Act) - Self-insured plans are regulated by the federal government under this act.

Fully insured plan - A plan where the employer contracts with another organization to assume financial responsibility for the enrollees' medical claims and for all incurred administrative costs.

Incurred Claims - The total amount of claims occurring during a given time period.

Guaranteed Renewable - An insurer may not cancel the policy under any circumstances other than non-payment of premium or fraud. Subject to certain conditions (regulatory approval, adverse experience) the premium rates may be increased. It is the most common contract form, especially for individual medical and Long-Term Care insurance.

HMO (Health Maintenance Organization) - Prepaid health insurance plan that entitles members to services of participating physicians, hospitals and clinics. Members of the HMO pay a flat periodic fee for medical services.

Loss Adjustment Expense - The cost involved in an insurance company's adjustment of losses under a policy.

Loss Ratio - The relationship of incurred losses plus loss adjustment expense to earned premiums.

LTC (Long Term Care) - Long-term Care Insurance is a special type of health insurance that is designed to cover expenses of nursing home care, home health care or other types of defined care that persons may need at various stages of their lives, and not necessarily just at advanced ages.

Managed Care - A medical delivery system designed to manage the quality and cost of medical services that individuals receive. Most managed care systems offer HMOs and PPOs that individuals are encouraged to use for their health care services.

Medicare - A federal health insurance program for people 65 years of age and older, and for people of all ages with certain disabilities. Eligibility is not income based.

Medicaid - A federal/state program that provides health coverage for certain categories of people with low incomes.

Medical loss ratio - The percent of health insurance premiums spent on medical claims. A 96% loss ratio means that 96 percent of the insurer's health insurance premiums purchased medical services. The more technical definition of medical loss is claims incurred divided by net premium earned.

NAIC - The National Association of Insurance Commissioners.

Net Income - The net result of all: revenue, claims incurred, expenses, investment results, taxes and write-offs. This report uses the term profit margin as synonymous with net income.

Net investment income (or gain) - Includes all income earned from invested assets minus expenses associated with investments plus the profit (or loss) realized from the sale of assets.

Net Premium Earned - The amount charged by the insurer to the policyholder for the effective period of the contract, reinsurance premiums, plus the change in the unearned premium liability. The unearned premium liability is the portion of the premium that has been received by the insurer for insurance that has not yet been provided. It is the amount that would have to be returned to the policyholder if the policy was canceled before the end of the policy period.

Net Underwriting Gain or Loss - The operating costs that are not allocated to: hospital and medical payments, claim adjustment expenses or investment expenses.

Non-cancellable - An insurer may not cancel the policy and may not increase premiums for any reason. Commonly used for Disability Income for most select risks.

Non-renewable for Stated Reasons Only - When the insured reaches a certain age or when all similar policies are not renewed, the policy is said to be nonrenewable for the reasons stated.

PPO (Preferred Provider Organization) - An indemnity health insurance plan where coverage is provided to participants through a network of selected health care providers (such as hospitals and physicians). The enrollees may go outside the network, but would incur larger costs in the form of higher deductibles, higher coinsurance rates, or non-discounted charges from the providers.

Risk-Based Capital (RBC) - A method for evaluating an insurer's surplus in relation to its overall business operations in consideration of its size and lines of business written. An insurer's RBC is calculated by applying factors to various assets, premium and reserve items. The calculation produces the "authorized control level." The RBC ratio is the insurer's surplus divided by the authorized control level. The state is authorized to take regulatory action against an insurer that fails to maintain surplus equal to 200 percent of its authorized control level.

RBC Ratio - The measurement of the amount of capital (assets minus liabilities) an insurance company has as a basis of support for the degree of risk associated with its company operations and investments. This ratio identifies the companies that are inadequately capitalized by dividing the company's surplus by the minimum amount of capital that the regulatory authorities feel is necessary to support the insurance operations.

Reinsurance - A form of insurance that insurance companies buy for their own protection, “a sharing of insurance.” An insurer (the reinsured) reduces its possible maximum loss on either an individual risk or a large number of risks by giving (ceding) a portion of liability to another insurance company (reinsurer).

Reinsurer - An insurance company that assumes all or part of an Insurance or Reinsurance policy written by a primary insurance company.

Reserves - Funds created to pay anticipated claims.

Self-insured plan - A plan offered by employers who directly assume the major cost of health insurance for their employees. Some self-insured plans bear the entire risk. Other self-insured employers insure against large claims by purchasing stop-loss coverage. Some self-insured employers contract with insurance carriers or third party administrators for claims processing and other administrative services; other self-insured plans are self-administered. All types of plans (Conventional Indemnity, PPO, EPO, HMO, POS and PHOs) can be financed on a self-insured basis. Employers may offer both self-insured and fully insured plans to their employees. Self-insured plans are also called ERISA Plans.

Stop-loss coverage - A form of reinsurance for self-insured employers that limits the amount employers will have to pay for each person’s health care (individual limit) or for the total expenses of the employer (group limit).

Surplus - The amount an insurance company’s assets exceed its liabilities. Additional funds are surplus over and above what the insurer expects to pay out for medical claims, expenses, taxes and other obligations. All insurers must, by law, maintain minimum levels of surplus to ensure they will be able to meet their financial obligations to policyholders. Surplus includes common and preferred stock issued to its shareholders, any funds that are contributed to the insurer and the accumulation of the insurer’s net income or losses since its inception.

Third Party Administrator (TPA) - An individual or firm hired by an employer to handle claims processing, pay providers and manage other functions related to the operation of health insurance. The TPA is not the policyholder or the insurer.

Trend or Trending - Any procedure used to project claim costs from one period to another. Typically, “trend” is expressed as an annual percentage rate which represents the rate at which claim costs are expected to change over a period of one year.

Underwriting - The process of identifying and classifying the degree of risk represented by a proposed insured. An insurance company’s process is to decide whether or not to issue coverage to an applicant and which benefits to offer at which premium rates. Its fundamental purpose is to make sure that the premiums collected reflect the company’s estimate of future claim costs. An individual who has been subjected to this process is referred to as being “underwritten.”

Written Premium - refers to the amount of premium customers are required to pay for insurance policies written during the accounting period. This is different from **Earned Premium**, which is the portion of the total premium amount corresponding to the coverage provided during a given accounting period.



COLORADO

**Department of
Regulatory Agencies**

Division of Insurance

**Colorado Health Insurance Cost Report
Appendix 3:
Intermediaries**

2018

In accordance with § 10-16-111(4)(a)(b)&(c), C.R.S.



Company Name	Agent Name	Business Address	Business Phone
American Specialty Health Systems, Inc		12800 N. Meridian St. Carmel, IN 46032	619-578-2000
American Therapy Administrators	David W. Dingley	W140 N8981 Lilly Rd., Menomonee Falls, WI 53051	262-834-6187
Amoeona USA	Stephanie Burns	1701 Barrett Lakes Blvd. Ste 410, Kennesaw GA 30144	877-726-7701
Banner Network Colorado	Jim Branom	7251 W 4th Street, Greeley, CO 80634	970-346-3702
Beacon Health Options	Larry Earle	240 Corporate Blvd, Norfolk VA 23502	757-459-5100
Boulder Valley IPA	Richard Fey	6676 Gun Park Drive, Suite B, Boulder, CO 80301	303-530-3405
CareCentrix	Andrea Serfling	20 Church Street Suite 1100, Hartford, CT 6103	913-749-5599
Carent Laboratory Solutions	Daryl Bohlender	22240 CR 39, LaSale, CO 80645	970-663-5631
Central Rockies IPA	Sharon Jewett	crppa@msn.com	970-479-0489
Centura PMSA	Kris Ordelheide	9100 East Mineral, Centennial , CO 80112	303-673-8165
COHEN KEN MD		30940 Stagecoach Blvd, Evergreen, CO 80439	303-674-6062
Colorado Health Medical Group	Patrick Knipe	2315 E Harmony Road #200, Fort Collins, CO 80528	970-624-4421
Colorado Network	John Leavit	1328 Roundup Rd. , Westcliffe, CO 81252	719-783-2828
Colorado Network	John Leavitt	581 8th Street, Alamosa, CO 80110	719-589-3389
Colorado Physical Therapy Network	Mark Engelman	3333 S Wadsworth Blvd Unit D212, Lakewood, CO 80227	303-757-7004
Colorado Preferred Physician Organization, Inc.	Pete Knott	4891 Independence Street, #285, Wheat Ridge, CO 80033	303-422-1722
Colorado Preferred Physicians Organization (CPPO)	Nanci Robertson	P.O Box 897 Wheatridge, CO 80034	303-979-4098
Colorado Springs Health Partners	Laure Stengle	2 South Cascade Avenue, Suite 140, Colorado Springs, Colorado 80903	719-538-2900
Columbine	David McReynolds	600 17th Street, Suite 2500S, Denver, CO 80202	303-893-1900
Columbine Health Plan	Suzanne Miller	600 17th Street, Suite 2500S, Denver, CO 80202	303-893-1900
Community Health Partners Organization	Heather Gray	2021 N 12th Street, Grand Junction, CO 81501	970-257-6265
Community Hospital Provider Organization	Heather Gray	2021 N. 12th Street, Grand Junction CO 81501	970-256-6270
CRPPA - Central Rockies Physician Practice Associates	Sharon Jewett	81 Bachelor Springs, Edwards, P.O. Box 703, VAIL, CO 81658	970-479-0489
Delta County I.P.A.	Jason Kleckler	1501 E Third St, Delta, CO 81416	970-874-7681
DentaQuest		465 Medford Street Boston, Massachusetts 02129-1454	888-278-7310
Dry Creek Imaging Center	Kelly A. McAleese	11 West Dry Creek Circle, Littleton, CO 80120	303-321-2273
Durango IPA	Pat Hartman	PO Box 2269, Durango, CO 81302	970-565-2600
Durango Network	Pat Hartman	PO Box 2269, Durango, CO 81302	970-375-3216
Eastern Plains Medical Clinic of Calhan, LLC	Rena Crawford	560 Crystola, Calhan, CO 80808	719-347-0100
Eveia	Amy Coletti	1700 NW Gilman Blvd, STE 200, Issaquah, WA 98027	425-657-0494x107
Evicore	Sabrina Nunez	730 Cool Springs Boulevard, Suite 80, Franklin, TN 37067	615-468-4202

EviCore Healthcare	Ashley Maloney	1575 Garden of the Gods Rd. Suite 200 Colorado Springs, CO 80907	800-918-8924-
EyeMed	Charla Hearn	4000 Luxottica Pl Mason, OH 45040	513-765-3417
EyeMed Visioncare, LLC	Janet Nayman	4000 Luxottica Place, Mason, OH 45040	513-519-5290
HealthONE Clinic Services	Wendy Spirek	4900 S. Monaco St., Ste. 380, Denver, CO 80237	303-584-8000
HEARING CARE SOLUTIONS INC		5889 Greenwood Plaza Blvd Suite 300, Greenwood Village, CO 80111	866-344-7756
Infiniti Medical Consulting	Christie Robson	christie.robson@bresnan.net	970-216-9951
Integrated Physician Network	David Ehrenberger M.D.	1913 S. 88th St., Louisville, CO 80027	303-673-1272
Jefferson Center for Mental Health	David Goff	4851 Independence, Suite 200, Wheat Ridge, CO 80033	303-425-0300
Law Medical Consulting	Michele Law	lawconsult@questoffice.net	719-387-5465
Liberty Dental Plan Corporation		340 Commerce Irvine, CA 92602	888-703-6999
Logisticare Solutions		1275 Peachtree Street NE, 6th Floor Atlanta, GA 30309	404-888-5800
Marcia Brauchler	Marcia Brauchler	101 W. County Line Rd. #230, Littleton, CO 80129	303-586-9390
MCPIPA - Mesa County Physicians IPA	Sandy Randall	2764 Compass Dr, Grand Junction, CO 81506	970-248-8031
MedExec Consulting	Shelly Gorman	shelly@medexec.com	303-885-9223
MedImpact Healthcare Systems, Inc.	Matthew Simas	10181 Scripps Gateway Court, San Diego, CA 92131	858-566-2727
Montrose - Western Colorado Individual Practice Assoc	Pat Riddell	PO Box 2005, Montrose, CO 81402	970-240-7110
Monument Health	Stephanie Motter	744 Horizon Ct., #260, Grand Junction, CO, 81506	970-683-5630
myNEXUS		105 Westwood Pl #400 Brentwood, TN 37027	844-411-9622
New West Physicians, P.C.	Cheryl Cain	1707 Cole Blvd., #100, Golden, CO 80401	303-279-7844
North Colorado IPA	Jan Gillespie, MD	1175 58th Ave., Ste 202 , Greeley CO 80634	970-495-0333
Northern Colorado IPA	Jan Gillespie	1175 58th Ave Ste 202, Greeley, CO 80634	970-495-0300
Physician Health Partners	Mary Venturella	1125 17th Street, Suite 1000, Denver, CO 80202	720-612-6610
PhysioTherapy Associates	Sharon Silvestrini	680 American Ave. Ste. 200, King of Prussia, PA 19406	610-992-7200
Pinnacle III	Dan Connolly	24757 Red Cloud Drive Conifer Co 80433	303-816-7160
Pueblo Health Care, Inc.	Ann M. Bellah,	400 West 16th Street, Pueblo, CO 81003	719-584-4806
Robertson Consulting, Inc.	Nanci Robertson	robertsonconsulting@comcast.net	303-979-4098
Rose Medical Group	Lisa Wetherbee	4545 E. 9th Ave., #305, Denver, CO 80220	303-320-2073
Rose Medical Group	Dawn Kilgore	4900 South Monaco Street, Suite 240, Denver, CO 80237	720-990-2695
RT Welter & Associates, INC	R. Todd Welter	6870 W. 52nd Avenue Suite 102 Arvada, Co 80002	303-534-0388
Southwest HealthNet	Nancy Nelligan	nnelligan@swhealth.org	970-564-2147
Southwest HealthNet	Bill Wade	1311 N Mildred Rd., Cortez , CO 81321	970-564-2147
Southwest Healthnet, Inc.	Jay Wood	1311 N. Mildred Rd., Cortez, CO 81321	970-565-6666
The Durango Network	John Snyder, Executive Director	john@durangonetwork.com	970-375-3215
USPI	Jeanne Desautels	jdesautels@ortholink.net	303-357-4412