

Colorado Division of Criminal Justice

Summer 2010 Interim Adult Prison and Parole Population Projections

Pursuant to 24-33.5-503 (m), C.R.S.

July 2010

Linda Harrison

Office of Research and Statistics

Kim English, Research Director

Division of Criminal Justice

Jeanne M. Smith, Director

Colorado Department of Public Safety

Peter A. Weir, Executive Director

700 Kipling Street, Suite 1000

Denver, Colorado 80215

Telephone: (303) 239-4442

Fax Number: (303) 239-4491

<http://dcj.state.co.us/ors>

The Colorado Division of Criminal Justice Summer 2010 Interim Prison Population and Parole Caseload Projections

Introduction

The DCJ December 2009 prison population projections forecast that the Colorado adult prison population would decline by 3.9 percent in fiscal year (FY) 2010, and by 4.6 percent between June 2009 and June 2016. The female inmate population was projected to decline by 8.5 percent over FY 2010, and by 14.0 percent by June 2016. *Based upon actual prison population statistics as of the end of FY 2010, these estimates have been substantially modified.*

These interim prison and parole projections are based strictly on the data available, and assume no changes in policy or practice are forthcoming that will affect the size of the prison and parole populations. However, significant legislation has been passed that is expected to substantially affect the size of the prison and parole populations in upcoming years.

Overall Inmate Population

The December 2009 DCJ projections indicated that the prison population would fall to 22,280 by June 30, 2010. The actual year-end population was 22,860, 2.6 percent greater than expected.

The overall prison population declined by 1.4 percent during FY 2010, the first decline observed to date. However, this decline did not meet the expected decline of 3.9 percent. Fewer discretionary parole releases occurred than were anticipated in the December 2009 calculations, likely attributable to the fact that the accelerated transition program did not realize the numbers expected.¹ Additionally, while data concerning FY 2010 admissions are not available, preliminary analysis indicates that there were slightly more admissions than had been anticipated for the December 2009 projections.

Although the 2010 interim projections have been adjusted upwards through mid-FY 2013, a downward adjustment has been made through the remainder of the projection period. This decline is the result of the expected impact of the passage of House Bills 1338, 1352, 1360, 1373 and 1374.

In December 2009, the DCJ projections forecast that the female inmate population would reach 2,095, almost identical to the 2,094 female inmate population realized at the end of FY 2010. Therefore, only a slight upward adjustment was made to the projected female population, followed by a downward adjustment beginning in FY 2013.

The DCJ 2010 interim quarterly projections are displayed below in Table 1. These projections show an overall decrease of 8.6 percent in the inmate population between the end of FY 2010 and FY 2016. Figure 1 displays the original December 2009

¹See: Department of Corrections. (2009). *Budget reduction proposal: Accelerated re-entry with enhanced parole services – frequently asked questions*. Colorado Springs, CO: Department of Corrections.

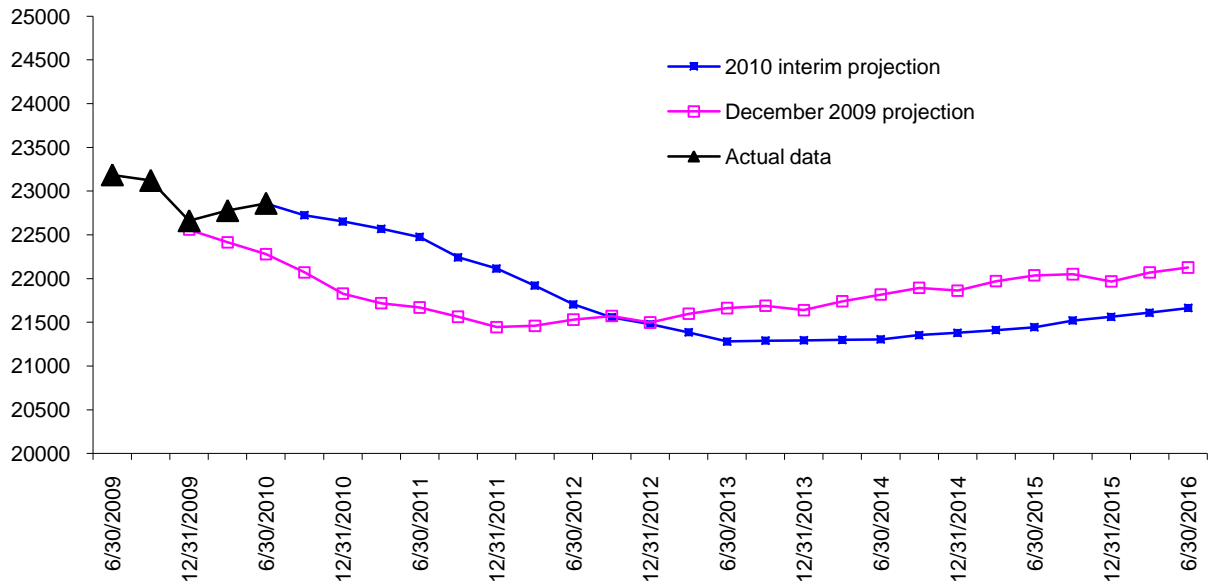
projections, the actual growth through FY 2010, and the recalibrated interim figures. Figure 2 displays the same for the projected female prison population.

Table 1. DCJ Summer 2010 Interim Quarterly Adult Prison Population Projections, Total and by Gender

FY	End of month:	Total Population	Quarterly Growth	Male Total Population	Quarterly Growth	Female Total Population	Quarterly Growth
2009	June*	23186	0.15%	20896	0.22%	2290	-0.52%
	September*	23122	-0.28%	20900	0.02%	2222	-2.97%
	December*	22661	-1.99%	20523	-1.80%	2138	-3.78%
	March*	22777	0.51%	20683	0.78%	2094	-2.06%
2010	June*	22860	0.36%	20766	0.40%	2094	0.00%
	September	22725	-0.59%	20608	-0.76%	2117	1.07%
	December	22653	-0.32%	20569	-0.19%	2083	-1.57%
	March	22568	-0.37%	20507	-0.30%	2061	-1.08%
2011	June	22475	-0.41%	20422	-0.41%	2053	-0.40%
	September	22243	-1.03%	20199	-1.10%	2045	-0.40%
	December	22115	-0.58%	20081	-0.58%	2034	-0.53%
	March	21919	-0.89%	19929	-0.76%	1990	-2.16%
2012	June	21706	-0.97%	19742	-0.94%	1964	-1.29%
	September	21557	-0.69%	19622	-0.61%	1935	-1.49%
	December	21477	-0.37%	19543	-0.40%	1934	-0.02%
	March	21384	-0.43%	19504	-0.20%	1880	-2.79%
2013	June	21282	-0.48%	19417	-0.45%	1865	-0.83%
	September	21289	0.04%	19427	0.05%	1862	-0.14%
	December	21294	0.02%	19433	0.03%	1861	-0.07%
	March	21299	0.02%	19460	0.14%	1839	-1.18%
2014	June	21304	0.03%	19459	-0.01%	1846	0.36%
	September	21353	0.23%	19513	0.28%	1840	-0.28%
	December	21379	0.12%	19513	0.00%	1866	1.38%
	March	21410	0.14%	19558	0.23%	1851	-0.77%
2015	June	21443	0.16%	19572	0.07%	1871	1.07%
	September	21521	0.36%	19631	0.30%	1890	0.98%
	December	21562	0.19%	19653	0.11%	1909	1.04%
	March	21610	0.22%	19710	0.29%	1901	-0.44%
2016	June	21663	0.25%	19736	0.13%	1928	1.43%

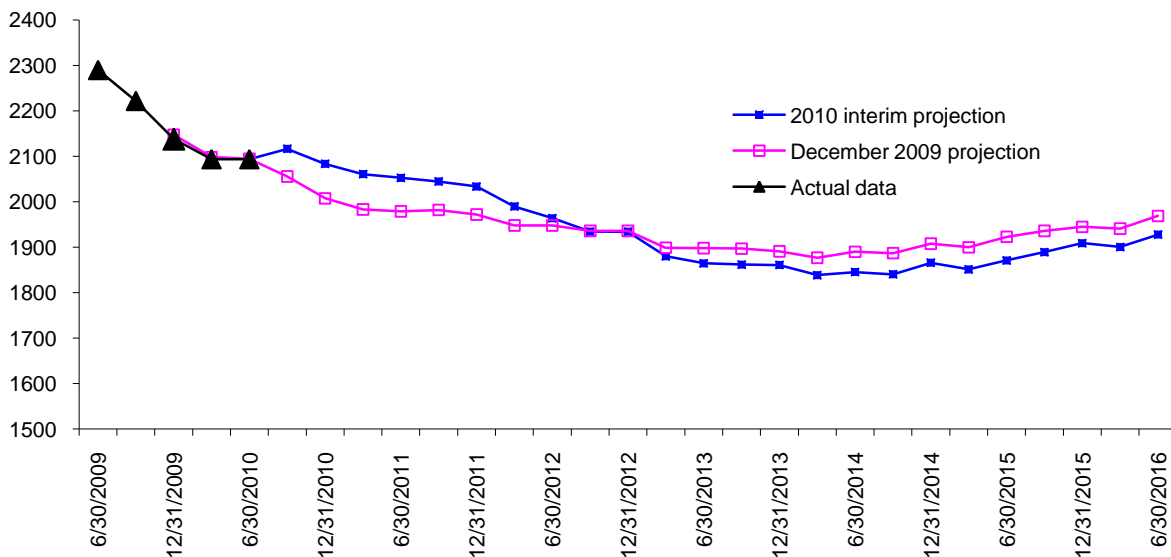
* Actual data provided by Colorado Department of Corrections Monthly Population and Capacity Reports, available at: <http://www.doc.state.co.us/statistical-reports-and-bulletins>

Figure 1. Actual Quarterly Inmate Population FY 2009 – FY 2010, December 2009 DCJ Projected Population and Summer 2010 Interim Projections through FY 2016



Sources: Colorado Department of Corrections Monthly Population and Capacity Reports, available at: <http://www.doc.state.co.us/statistical-reports-and-bulletins>; Harrison, Linda (2010). *December 2009 Correctional Population Forecasts*. Colorado Division of Criminal Justice, Denver, Colorado. Available at: <http://dcj.state.co.us/ors/ppp.htm>

Figure 2: Actual Quarterly Female Inmate Population FY 2009 – FY 2010, December 2009 DCJ Projected Female Prison Population and Summer 2010 Interim Female Population Projections through FY 2016



Sources: Colorado Department of Corrections Monthly Population and Capacity Reports, available at: <http://www.doc.state.co.us/statistical-reports-and-bulletins>; Harrison, Linda (2010). *December 2009 Correctional Population Forecasts*. Colorado Division of Criminal Justice, Denver, Colorado. Available at: <http://dcj.state.co.us/ors/ppp.htm>

Parole Caseload Projections

The DCJ December 2009 projections anticipated that the parole population would increase by 3.4 percent by the end of FY 2010, followed by a decline. However, as in the case of the inmate population projection, releases to parole did not meet expectations, and the parole population actually declined by 5.3 percent, resulting in an 8.5 percent error. However, due to the advent of House Bills 1338, 1352, 1360, 1373 and 1374, more releases to parole are expected in the future. Additionally, House Bills 1360 and 1374 are expected to increase the length of stay on parole for a portion of parolees. The DCJ 2010 interim projections indicate that the parole caseload will increase by 11.6 percent between July 1, 2010 and the end of FY 2016.

Table 2 displays the DCJ 2010 interim year-end parole caseload projections. Figure 3 compares the Winter 2009 DCJ parole projections to the current interim projections.

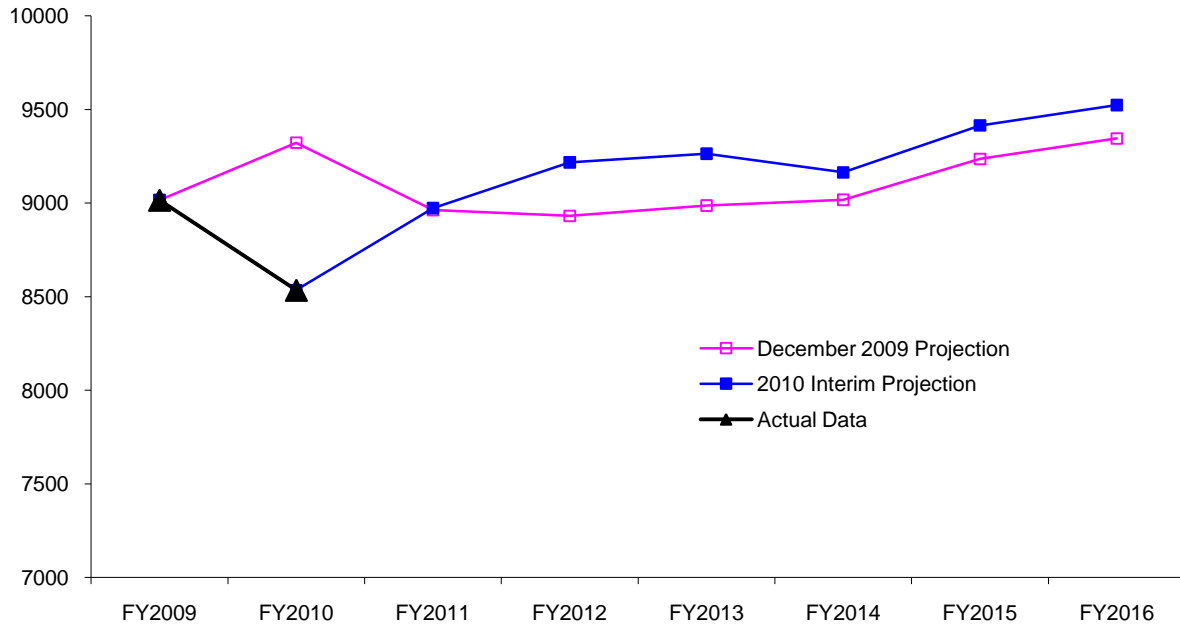
Table 2. DCJ Summer 2010 Interim Parole Caseload Projections

	Parole Caseload	Annual Growth
FY2009*	9016	2.65%
FY2010*	8535	-5.33%
FY2011	8973	5.13%
FY2012	9218	2.73%
FY2013	9264	0.50%
FY2014	9164	-1.08%
FY2015	9415	2.74%
FY2016	9524	1.16%

* Actual data

Source: Colorado Department of Corrections Monthly Population and Capacity Reports, available at: <http://www.doc.state.co.us/statistical-reports-and-bulletins>

Figure 3: Actual End-of-Fiscal Year Parole Caseload FY 2009 – FY 2010, December 2009 DCJ Parole Caseload Projection and Summer 2010 Interim Parole Caseload Projections through FY 2016.



Sources: Colorado Department of Corrections Monthly Population and Capacity Reports, available at: <http://www.doc.state.co.us/statistical-reports-and-bulletins>; Harrison, Linda (2010). *December 2009 Correctional Population Forecasts*. Colorado Division of Criminal Justice, Denver, Colorado. Available at: <http://dcj.state.co.us/ors/ppp.htm>