

Colorado Division of Criminal Justice

Summer 2009 Interim Adult Prison and Parole Population Projections

Pursuant to 24-33.5-503 (m), C.R.S.

July 2009

Linda Harrison

Office of Research and Statistics

Kim English, Research Director

Division of Criminal Justice

Jeanne M. Smith, Director

Colorado Department of Public Safety

Peter A. Weir, Executive Director

700 Kipling Street, Suite 1000

Denver, Colorado 80215

Telephone: (303) 239-4442

Fax Number: (303) 239-4491

<http://dcj.state.co.us/ors>

The Colorado Division of Criminal Justice Summer 2009 Interim Prison Population Projections

Introduction

In its December 2008 prison population forecast, the Colorado Division of Criminal Justice (DCJ) forecast that the Colorado adult prison population would grow by 2.8 percent in fiscal year (FY) 2009, and by 25.2 percent between June 2008 and June 2015. The female inmate population was projected to grow 2.0 percent over FY 2009, and by 17.6 percent by June 2015. Based upon actual prison population statistics as of the end of FY 2009, these estimates have been significantly reduced. *These interim prison and parole projections are based strictly on the data available, and assume no changes in policy or practice are forthcoming that will affect the size of the prison and parole populations.*

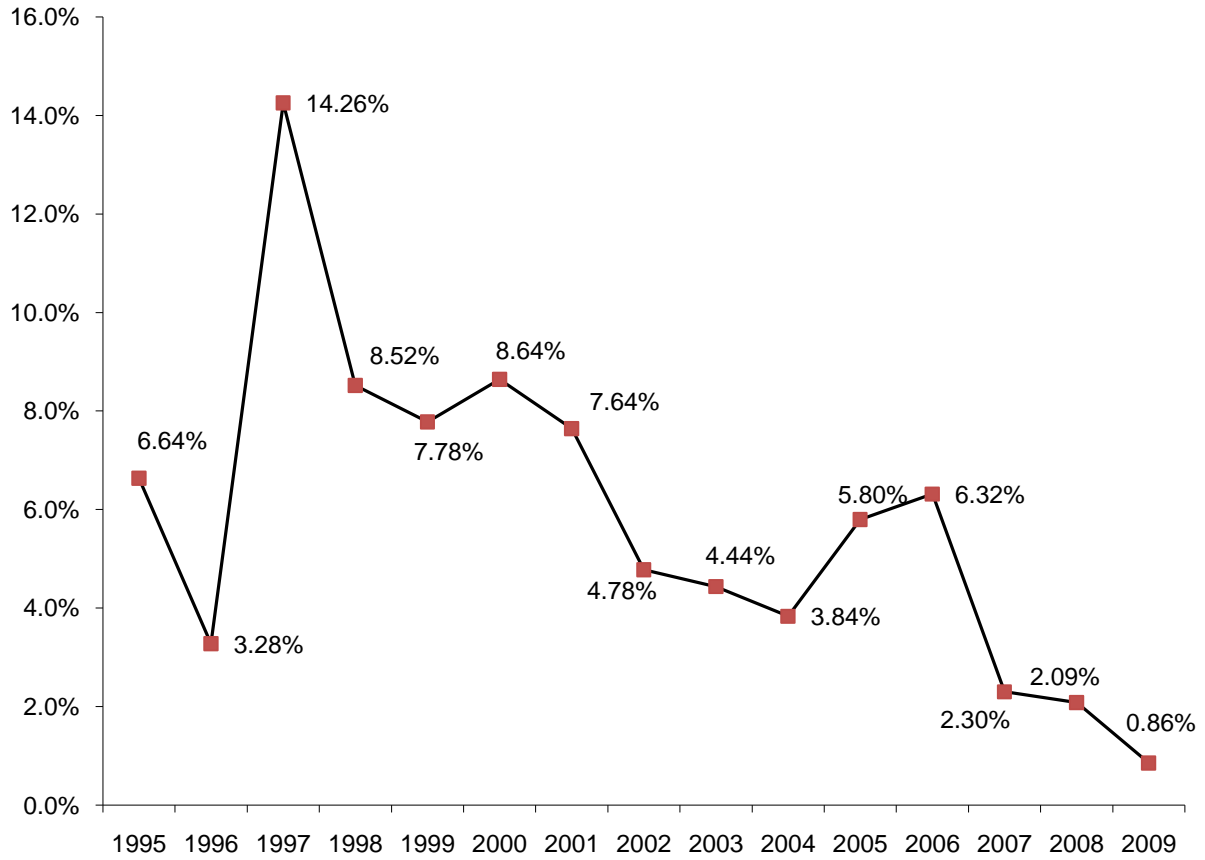
Overall Inmate Population

The December 2008 DCJ projections indicated that the prison population would reach 23,627 by June 30, 2009. This projection exceeded the actual fiscal year-end population of 23,186 by 1.9 percent.

The overall prison population grew by only 0.9 percent during FY 2009, while growth during FY 2007 and FY 2008 averaged 2.2 percent. Both of these figures represent the lowest annual growth rates observed in the past two decades. Figure 1 displays the annual rates of growth in the prison population since 1995. This decline in the rate of growth began mid-year of FY 2007, and has continued since. One observable factor in this decline is the significant narrowing of the differential between admissions and releases, as shown in Figure 2. While releases have continued to increase, they increased by only 2.0 percent in FY 2009. Releases to parole increased by only 1.7 percent in FY 2009. This follows the 4.3 percent growth rate observed in FY 2008, which followed three years of double-digit increases in the growth rate of parole releases. Estimated admissions, on the other hand, actually declined by 0.6 percent.

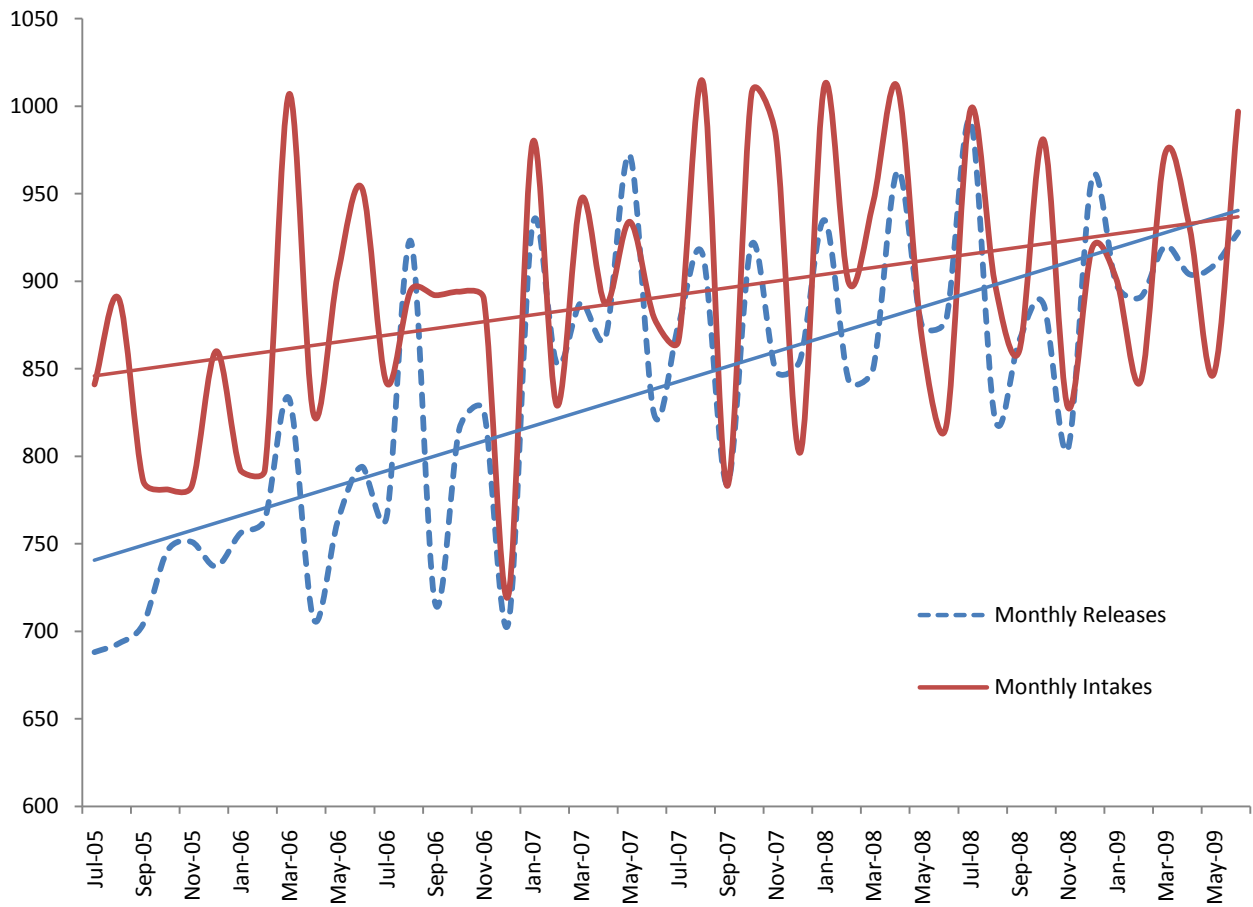
Based upon the current size of the prison population, numbers of releases and numbers of admissions, the DCJ December 2008 prison population projections have been adjusted downward for the DCJ Summer 2009 interim projections. The updated quarterly projections are displayed below in Table 1. These projections show an overall inmate population increase of 18.5 percent between FY 2009 and FY 2015. Figure 3 displays the original December 2008 projections, the actual growth through FY 2009, and the recalibrated interim figures.

Figure 1. Colorado Prison Population Annual Growth Rates FY 1995 - FY 2009



Source: Colorado Department of Corrections Monthly Population and Capacity Reports, available at: https://exdoc.state.co.us/secure/combo2.0.0/ajax/ajax_frontend.php?id=5027

Figure 2. Prison Admissions and Releases FY 2006 - FY 2009



Source: Colorado Department of Corrections Monthly Population and Capacity Reports, available at: https://exdoc.state.co.us/secure/combo2.0.0/ajax/ajax_frontend.php?id=5027

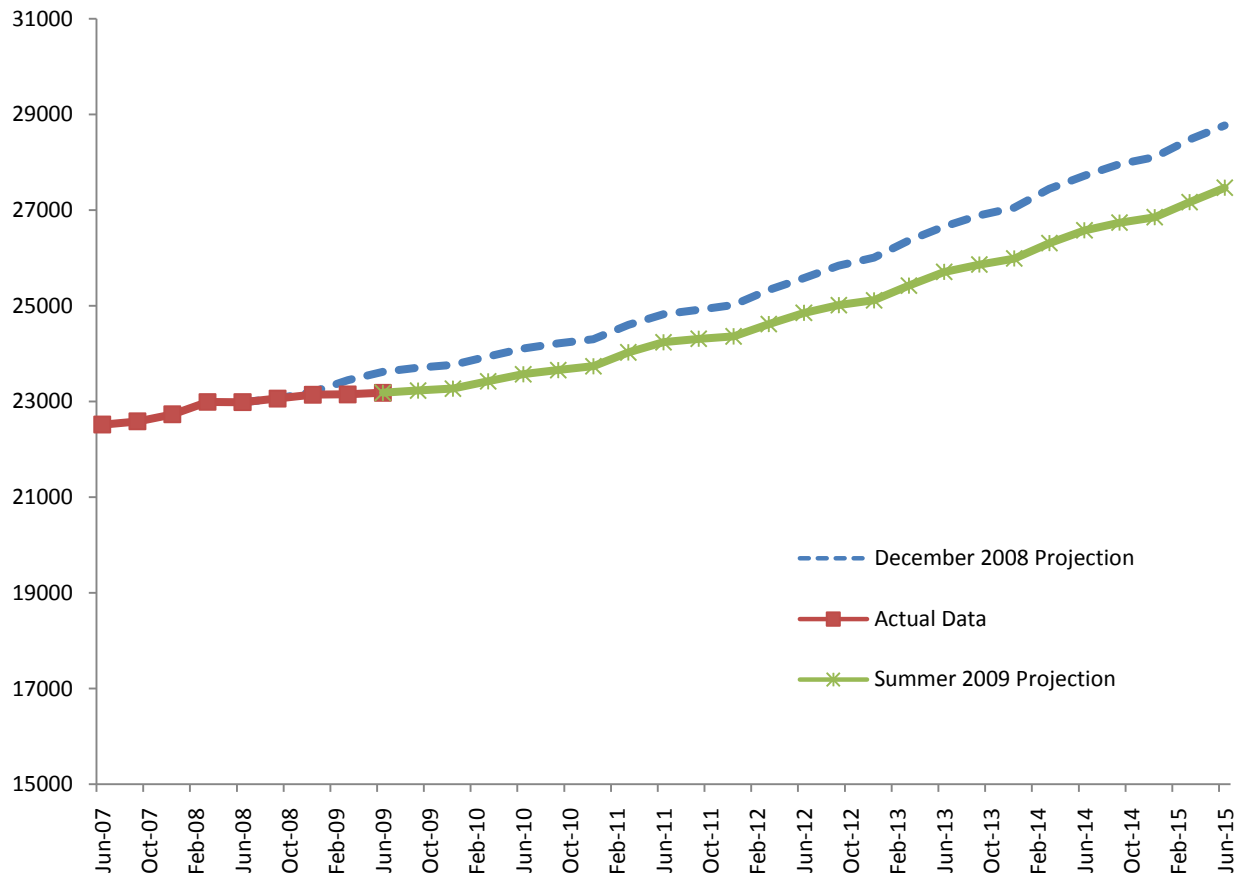
* Detailed admission data are not available. Admissions are estimated based on prison release numbers and population change.

Table 1. DCJ Summer 2009 Interim Quarterly Adult Prison Population Projections, Total and by Gender

| FY | End of month: | Total Population | Quarterly Growth | Male Total Population | Quarterly Growth | Female Total Population | Quarterly Growth |
|------|---------------|------------------|------------------|-----------------------|------------------|-------------------------|------------------|
| 2008 | June | 22989 | 1.95% | 20684 | 0.22% | 2305 | -2.12% |
| | September | 23066 | 0.33% | 20735 | 0.25% | 2331 | 1.13% |
| | December | 23144 | 0.34% | 20829 | 0.45% | 2315 | -0.69% |
| | March | 23152 | 0.03% | 20850 | 0.10% | 2302 | -0.56% |
| 2009 | June | 23186 | 0.15% | 20896 | 0.22% | 2290 | -0.52% |
| | September | 23233 | 0.20% | 20942 | 0.22% | 2291 | 0.04% |
| | December | 23270 | 0.16% | 20966 | 0.12% | 2304 | 0.57% |
| | March | 23424 | 0.66% | 21132 | 0.79% | 2292 | -0.52% |
| 2010 | June | 23574 | 0.64% | 21265 | 0.63% | 2309 | 0.74% |
| | September | 23663 | 0.38% | 21325 | 0.28% | 2338 | 1.26% |
| | December | 23739 | 0.32% | 21400 | 0.35% | 2339 | 0.04% |
| | March | 24031 | 1.23% | 21684 | 1.33% | 2347 | 0.34% |
| 2011 | June | 24244 | 0.89% | 21892 | 0.96% | 2352 | 0.21% |
| | September | 24312 | 0.28% | 21941 | 0.22% | 2371 | 0.81% |
| | December | 24365 | 0.22% | 21993 | 0.24% | 2372 | 0.04% |
| | March | 24619 | 1.04% | 22242 | 1.13% | 2377 | 0.21% |
| 2012 | June | 24855 | 0.96% | 22452 | 0.94% | 2403 | 1.09% |
| | September | 25018 | 0.66% | 22596 | 0.64% | 2422 | 0.79% |
| | December | 25118 | 0.40% | 22685 | 0.39% | 2433 | 0.45% |
| | March | 25426 | 1.23% | 22984 | 1.32% | 2442 | 0.37% |
| 2013 | June | 25709 | 1.11% | 23249 | 1.15% | 2460 | 0.74% |
| | September | 25864 | 0.60% | 23383 | 0.58% | 2481 | 0.85% |
| | December | 25990 | 0.49% | 23492 | 0.47% | 2498 | 0.69% |
| | March | 26313 | 1.24% | 23808 | 1.35% | 2505 | 0.28% |
| 2014 | June | 26580 | 1.01% | 24056 | 1.04% | 2524 | 0.76% |
| | September | 26740 | 0.60% | 24187 | 0.54% | 2553 | 1.15% |
| | December | 26854 | 0.43% | 24285 | 0.41% | 2569 | 0.63% |
| | March | 27169 | 1.17% | 24590 | 1.26% | 2579 | 0.39% |
| 2015 | June | 27468 | 1.10% | 24855 | 1.08% | 2613 | 1.32% |

* Actual data provided by Colorado Department of Corrections Monthly Population and Capacity Reports, available at: https://exdoc.state.co.us/secure/combo2.0.0/ajax/ajax_frontend.php?id=5027

Figure 3. Actual Monthly Inmate Population FY 2008 – FY 2009, December 2008 DCJ Projected Population and Summer 2009 Interim Projections through FY 2015

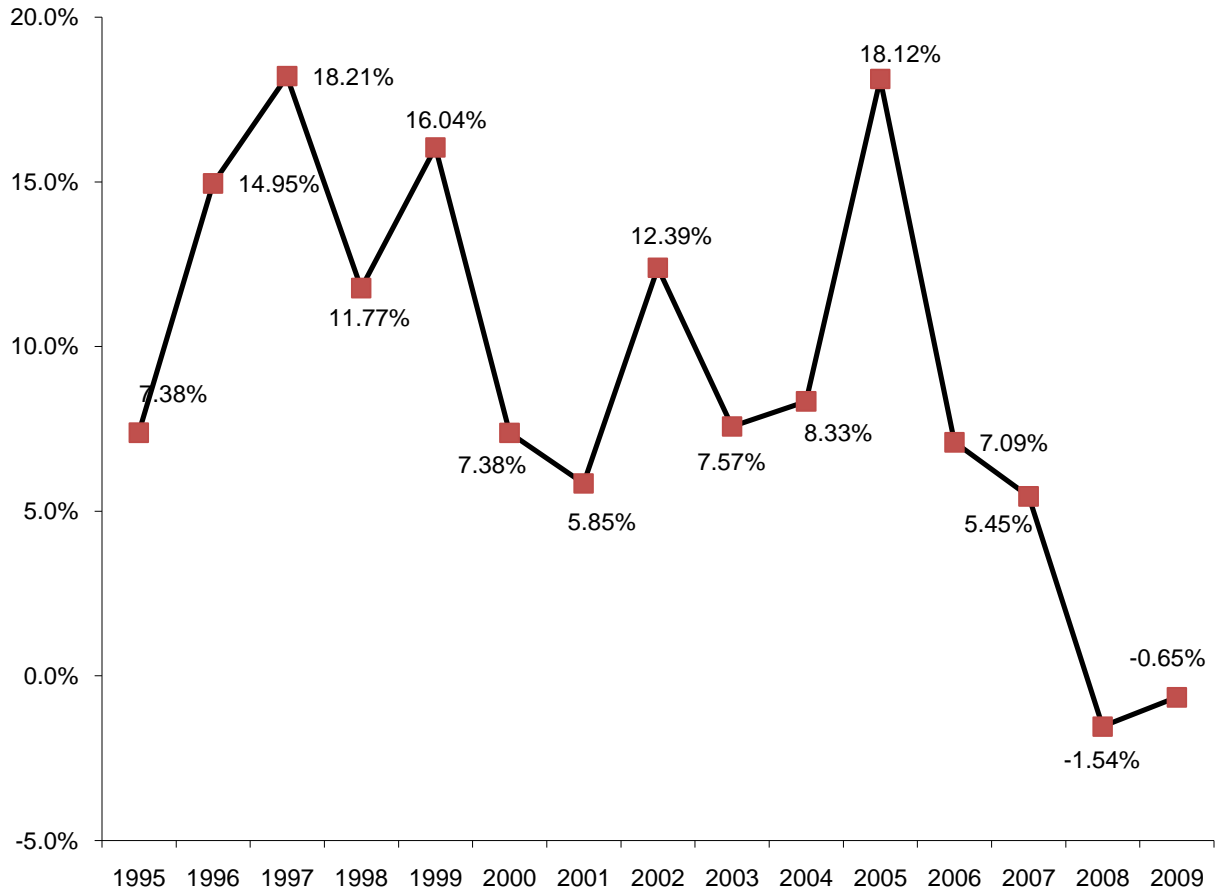


Sources: Colorado Department of Corrections Monthly Population and Capacity Reports, available at: https://exdoc.state.co.us/secure/combo2.0.0/ajax/ajax_frontend.php?id=5027; Harrison, Linda (2008). *Correctional Population Forecasts*. Colorado Division of Criminal Justice, Denver, Colorado. Available at <http://dcj.state.co.us/ors/pdf/PPP/FINAL%20December%202008%20PPP%20report.pdf>

Female Inmate Population

In December 2008, the DCJ projections forecast that the female inmate population would reach 2,350 by June 30, 2009, an increase of 2.0 percent over the course of FY 2009. However, the female prison population actually fell by 0.7 percent. Figure 4 displays the pattern of growth observed over the past 15 years in the female prison population. The December 2008 projections exceeded the actual population at the end of FY 2009 by 2.6 percent.

**Figure 4. Colorado Female Prison Population Annual Growth Rates
FY 1995 - FY 2009**

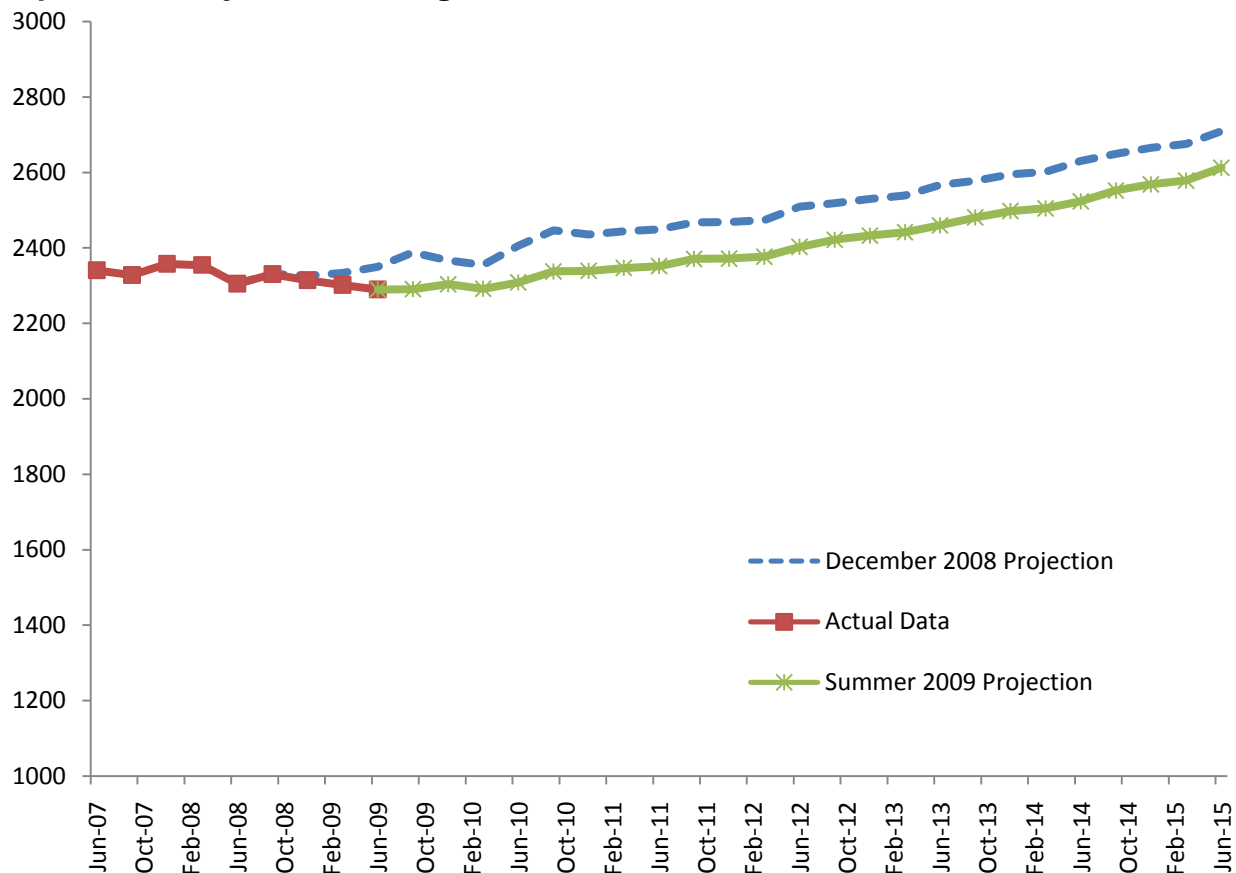


Source: Colorado Department of Corrections Monthly Population and Capacity Reports, available at: https://exdoc.state.co.us/secure/combo2.0.0/ajax/ajax_frontend.php?id=5027

Based upon the actual size of the female prison population at the end of FY 2009, the DCJ projections for this population have been adjusted downward. Figure 5 displays the actual growth in the female population through FY 2009, the original DCJ December 2008 projections, and the reduced Summer 2009 interim projections. Table 1 (above) contains the adjusted population figures for each quarter through FY 2015. The female inmate population is expected to increase 14.1 percent between FY 2009 and FY 2015.¹

¹ As the male population projections simply reflect the total projected population, they will not be elaborated upon in this update.

Figure 5: Actual Monthly Female Inmate Population FY 2007 – FY 2009, December 2008 DCJ Projected Female Population and Summer 2009 Interim Female Population Projections through FY 2015



Sources: Colorado Department of Corrections Monthly Population and Capacity Reports, available at: https://exdoc.state.co.us/secure/combo2.0.0/ajax/ajax_frontend.php?id=5027;
 Harrison, Linda (2008). *Correctional Population Forecasts*. Colorado Division of Criminal Justice, Denver, Colorado. Available at <http://dcj.state.co.us/ors/pdf/PPP/FINAL%20December%202008%20PPP%20report.pdf>

Parole Caseload Projections

The DCJ December 2008 parole population projections indicated a reduction in the growth of the parole population over FY 2009, at 1.6 percent, following the 10.5 percent growth observed during FY 2008. The actual growth in FY 2009 was slightly higher than predicted at 2.7 percent. This differential, though slight, prompted an upward adjustment of the parole caseload projections. The DCJ Summer 2009 interim parole caseload projections are displayed in Table 2, along with adjusted estimates of the out of state and absconder parole populations.

The parole caseload is predicted to increase 4.4 percent through the current fiscal year (from 9,016 to 9,413). By the end of FY 2015, the caseload is expected to reach 11,424, a 26.7 percent increase over the FY 2009 figure.

Table 2. DCJ Summer 2009 Interim Parole Caseload Projections

| | Parole Caseload | Annual Growth | Out of State Parole Caseload | Annual Growth | Parole Absconders | Annual Growth |
|-------|------------------------|----------------------|-------------------------------------|----------------------|--------------------------|----------------------|
| 2008* | 8783 | 10.52% | 1955 | 7.71% | 773 | -1.02% |
| 2009* | 9016 | 2.65% | 2029 | 3.79% | 705 | -8.80% |
| 2010 | 9413 | 4.41% | 2084 | 2.71% | 771 | 9.36% |
| 2011 | 10065 | 6.92% | 2174 | 4.33% | 838 | 8.70% |
| 2012 | 10545 | 4.78% | 2241 | 3.06% | 906 | 8.13% |
| 2013 | 10845 | 2.84% | 2282 | 1.85% | 975 | 7.64% |
| 2014 | 11129 | 2.62% | 2322 | 1.73% | 1046 | 7.21% |
| 2015 | 11424 | 2.64% | 2362 | 1.76% | 1117 | 6.83% |

* Actual data

Source: Colorado Department of Corrections Monthly Population and Capacity Reports, available at: https://exdoc.state.co.us/secure/combo2.0.0/ajax/ajax_frontend.php?id=5027;