
This document is intended to provide information to the CATPA Board of Directors and Grantee's for strategic planning in the FY15 CATPA Grant Application Process.

This information was acquired from the Colorado Stolen Vehicle Database Repository, which was funded by CATPA.

Data used in this report is inclusive of vehicles reported to the Colorado Crime Information Center with a date of theft between January 01, 2013 through December 31, 2013. Information contained in the Stolen Vehicle Database Repository is considered dynamic, as modifications, changes and amendments to the stolen vehicle records are made on a daily basis.

Stolen vehicle records were screened for accuracy and normalized for standardization prior to use in this analysis.

The actual number of auto thefts in Colorado is likely higher than purported. Specifically, the author is aware that many felony auto thefts, car-jackings thefts are not received into the Stolen Vehicle Database Repository. In addition, local law enforcement agencies may not have entered other stolen vehicles into the Colorado Crime Information Center, due to a stolen vehicle recovery occurring prior to completing the jurisdiction's reporting and processing procedures.



2013 Colorado Auto Thefts

Source: Colorado Stolen Vehicle Database Repository

1/8/2013

Robert Force

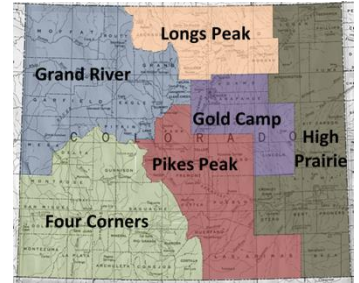
Contents

2013 STATEWIDE AUTO THEFT	2
WHEN 2013 THEFTS OCCURRED	3
2013 RECOVERIES.....	4
2013 PUFFER THEFTS.....	6
2013 STYLE OF VEHICLE THEFT	6
2013 PASSENGER VEHICLE THEFTS	8
2013 SUV THEFTS	9
2013 PICKUP TRUCK THEFTS.....	10
2013 MOTORCYCLE THEFTS.....	11
2013 THEFT FUNDING GUIDANCE	12
2011 TO 2013 COLORADO AUTO THEFTS BY COUNTY	16
2013 COLORADO AUTO THEFTS BY CITY	18

2013 Statewide Auto Theft

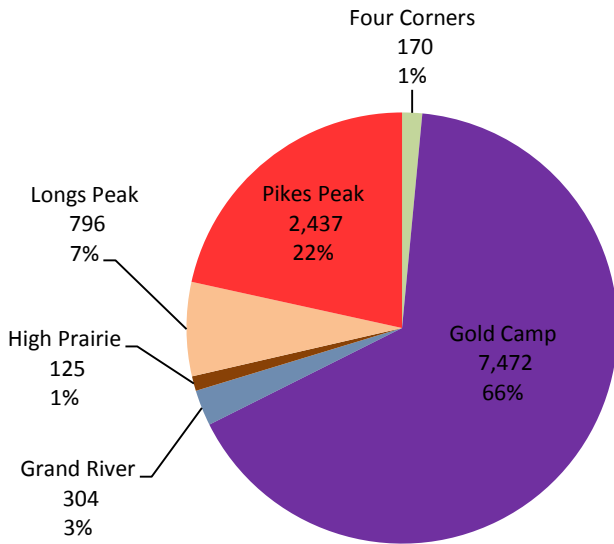
In 2013 Colorado experienced a 2.79% increase in auto theft from the previous year. This is a minimal increase as compared to 2012's experience of 13% rise from 2011. Regardless, it is concerning that auto theft is on a gradual rise since 2011. The percentile increases may be arguable, depending upon reference sources (e.g., UCR, NIBRS, or NICB), however all sources in 2012 clearly demonstrated an increase. It will be interesting to compare other auto theft data sources; however these sources will not be available for the next several months.

CATPA Area Map



- Decreases:
 - Grand River - 51 less thefts
 - Pikes Peak - 16 less thefts
 - Four Corners - 18 less thefts
- Increases:
 - Gold Camp 289 more thefts
 - High Prairie 33 more thefts
 - Longs Peak 70 more thefts

Area	2011 Thefts	2012 Thefts	2013 Thefts	% Δ
Gold Camp	6,604	7,183	7,472	4.02%
Four Corners	90	188	170	-9.57%
High Prairie	51	92	125	35.87%
Longs Peak	716	726	796	9.64%
Pikes Peak	1,883	2,453	2,437	-0.65%
Grand River	344	355	304	-14.37%
Grand Total	9,688	10,997	11,304	2.79%

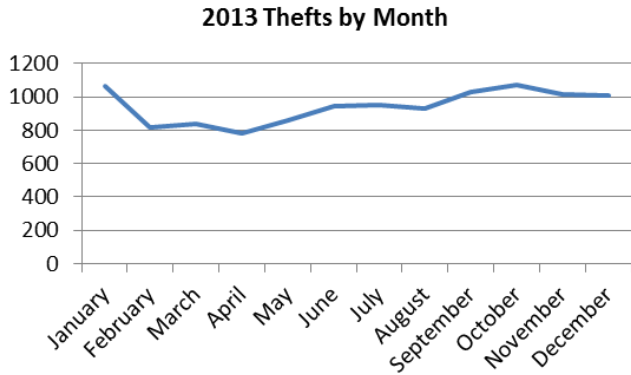


- [2011 - 2013 Colorado Auto Thefts by County](#)
- [2011 - 2013 Colorado Auto Thefts by City](#)

When 2013 Thefts Occurred

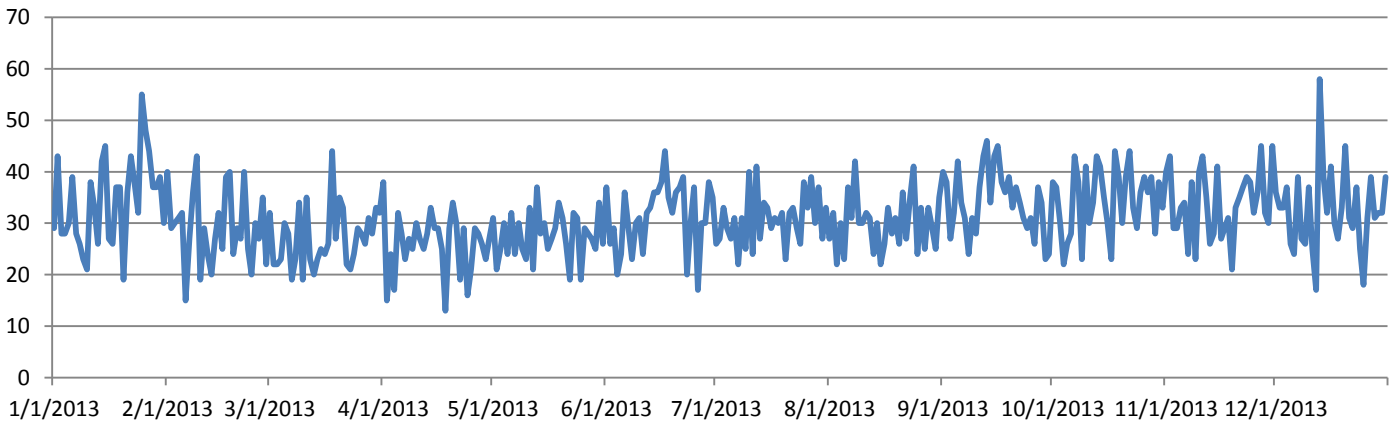
The highest months of auto theft in Colorado occurred in the cold season months of January, and September through December 2013. However, the highest month of reported auto theft occurred in October and the lowest was in April, with a variance of 2.5%.

- The monthly average of stolen vehicles 942
- The weekly average of stolen vehicles was 235
- The daily average of stolen vehicles was 33
- The highest theft day of week was Friday, followed by Monday.



2013 Colorado Monthly Auto Thefts					
Month	Active	Inactive	% Inactive	Total	% Total
January	147	917	86%	1064	9%
February	125	692	85%	817	7%
March	123	718	85%	841	7%
April	141	638	82%	779	7%
May	186	670	78%	856	8%
June	199	745	79%	944	8%
July	198	754	79%	952	8%
August	212	718	77%	930	8%
September	223	804	78%	1027	9%
October	244	825	77%	1069	9%
November	246	770	76%	1016	9%
December	346	663	66%	1009	9%
Grand Total	2390	8914	79%	11304	100%

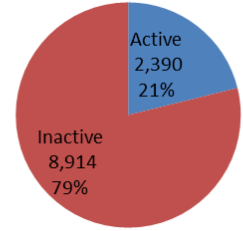
2013 Daily Reported Thefts



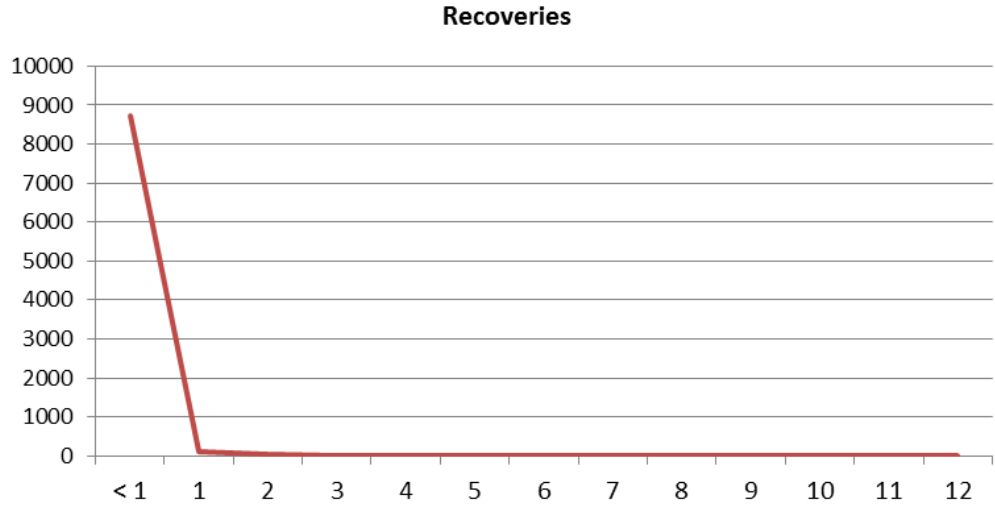
Day of Week	Thefts	% Thefts
Sunday	1553	13.7%
Monday	1715	15.2%
Tuesday	1584	14.0%
Wednesday	1548	13.7%
Thursday	1496	13.2%
Friday	1730	15.3%
Saturday	1678	14.8%
Grand Total	11304	100.0%

2013 Recoveries

- 79% of all reported vehicles were recovered
- 95% of all recovered vehicles were found within one week from the date of theft
- 98% of all recovered vehicles were found within one month from the date of theft
- Vehicles possessing validated identifiers for auto theft (e.g., VIN, registration and licensing) demonstrated a higher recovery rate than other style of vehicles.
- Vehicles without validated identifiers for auto theft show less than 40% recovery rate (e.g., motorcycles, trailers, construction vehicles, and special use vehicles).
- The Gold Camp and Pikes Peak experienced the highest percentage of auto theft recoveries with 80%.

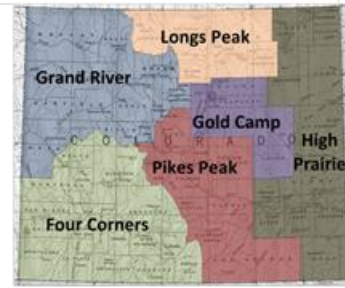


Months	Recoveries	% Total
≤ 1 Week	8,443	94.7%
≤ 1	283	3.2%
1	113	1.3%
2	43	0.5%
3	12	0.1%
4	6	0.1%
5	3	0.0%
6	3	0.0%
7	1	0.0%
8	1	0.0%
9	0	0.0%
10	0	0.0%
11	0	0.0%
12	6	0.1%



Style	Active	% Active	Inactive	% Inactive	Total	% Total
Farm		0%	1	100%	1	0%
Incomplete		0%	1	100%	1	0%
Passenger	591	11%	4806	89%	5397	48%
SUV	252	12%	1922	88%	2174	19%
Van	81	18%	372	82%	453	4%
Pickup	289	19%	1221	81%	1510	13%
Unknown	5	21%	19	79%	24	0%
Truck	11	22%	40	78%	51	0%
Bus	1	33%	2	67%	3	0%
Motor Home	1	50%	1	50%	2	0%
Motorcycle	590	66%	308	34%	898	8%
Trailer	471	70%	198	30%	669	6%
Construction	42	76%	13	24%	55	0%
Special	56	85%	10	15%	66	1%
Grand Total	2390	21%	8914	79%	11304	100%

CATPA Area Map



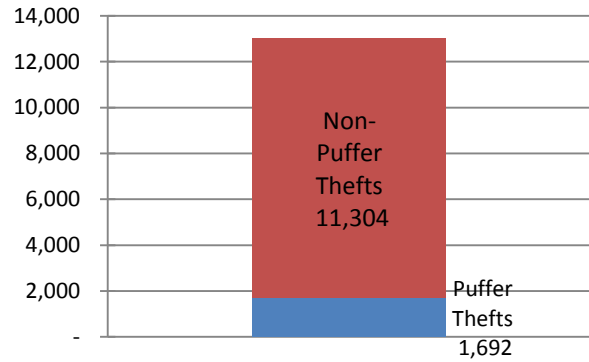
Reporting Area	Active	% Active	Inactive	% Inactive	Total	% Total
Four Corners	63	37%	107	63%	170	2%
Gold Camp	1,508	20%	5,964	80%	7,472	66%
Grand River	81	27%	223	73%	304	3%
High Prairie	43	34%	82	66%	125	1%
Longs Peak	210	26%	586	74%	796	7%
Pikes Peak	485	20%	1,952	80%	2,437	22%
Grand Total	2,390	21%	8,914	79%	11,304	100%

2013 Puffer Thefts

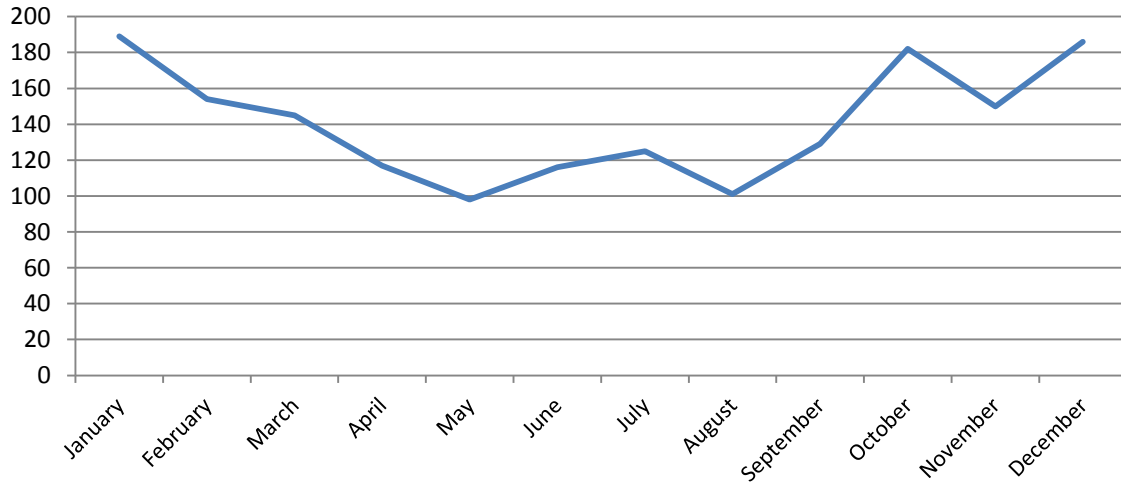
- Puffers accounted for 14.96% of all auto thefts reported to CCIC.
 - An average of 7 puffers was stolen per day.
 - An average of 35 puffers was stolen per week.
 - The highest months of stolen puffers were cold-season months of January through March and September through December.
 - Tuesdays showed a higher level of puffer thefts than any other day of the week.
 - Sundays showed the lowest level of puffer thefts than any other day of the week.

Period	Puffer Thefts	All Thefts
Year	1,692	11,304
Month	141	942
Week	35	236
Day	7	47

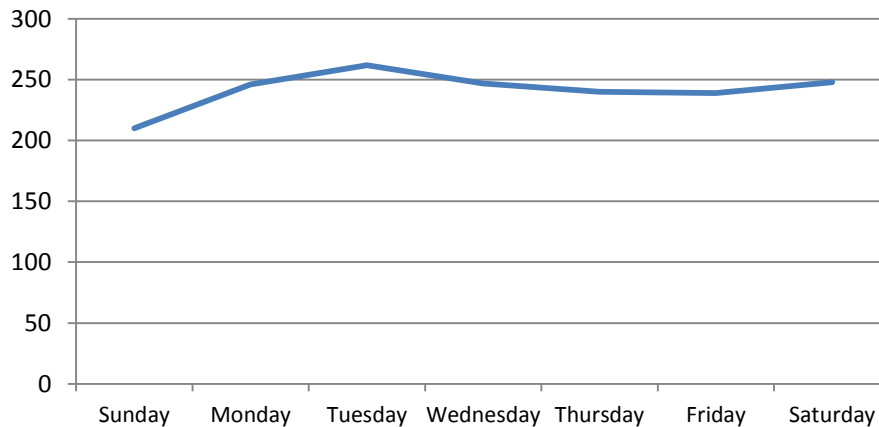
2013 Auto Thefts



2013 Monthly Puffer Thefts



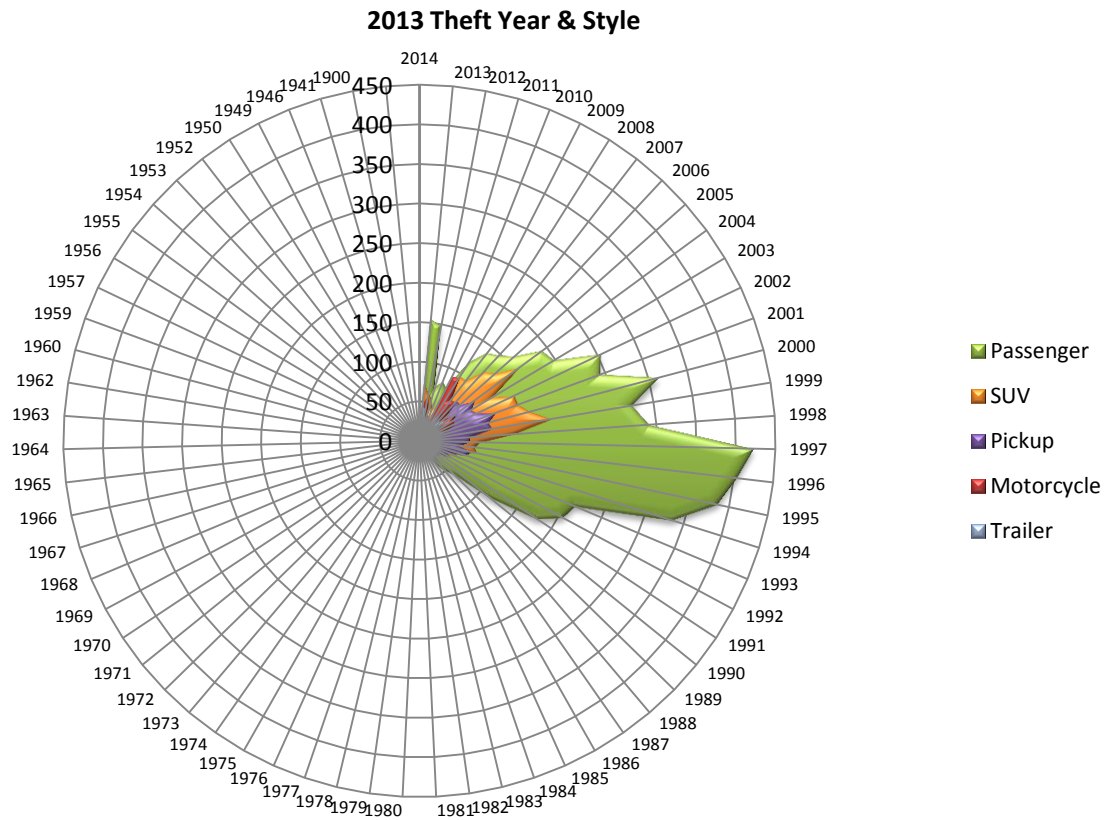
2013 Day of Week Puffers



2013 Style of Vehicle Theft

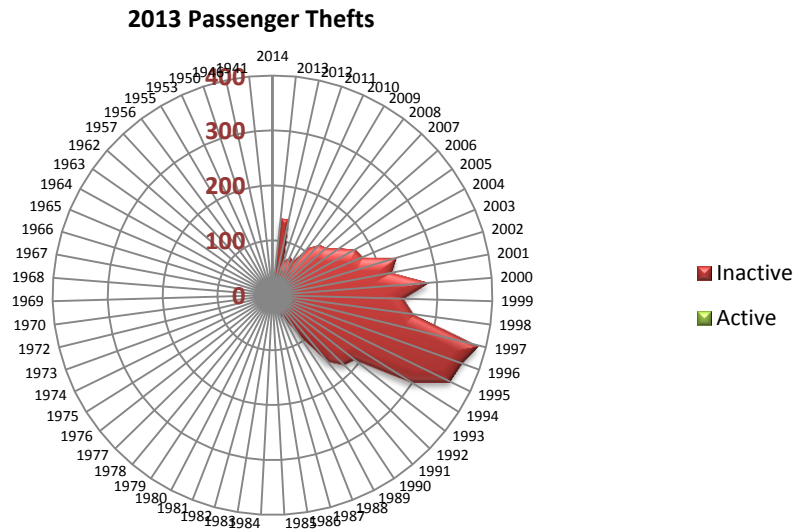
- Passenger vehicles were the most commonly reported stolen vehicle in 2013, followed by SUV's and pickup trucks. These three styles of vehicles represented 70% of all reported stolen vehicles in Colorado in 2013.

Style	Active	% Active	Inactive	% Inactive	Total	% Total
Unknown	5	21%	19	79%	24	0%
Bus	1	33%	2	67%	3	0%
Construction	42	76%	13	24%	55	0%
Farm		0%	1	100%	1	0%
Incomplete		0%	1	100%	1	0%
Motor Home	1	50%	1	50%	2	0%
Motorcycle	590	66%	308	34%	898	8%
Passenger	591	11%	4806	89%	5397	48%
Pickup	289	19%	1221	81%	1510	13%
Special	56	85%	10	15%	66	1%
SUV	252	12%	1922	88%	2174	19%
Trailer	471	70%	198	30%	669	6%
Truck	11	22%	40	78%	51	0%
Van	81	18%	372	82%	453	4%
Grand Total	2390	21%	8914	79%	11304	100%



2013 Passenger Vehicle Thefts

- In 2013, there were 5,397 stolen passenger vehicles captured in the Colorado Stolen Vehicle Database Repository.
- In 2013, passenger vehicles accounted for 47.7% of all reported stolen vehicles.
- In 2013, 89% of reported stolen passenger vehicles were recovered.
- In 2013, an average of 14.7 passenger vehicles were stolen every day in Colorado.

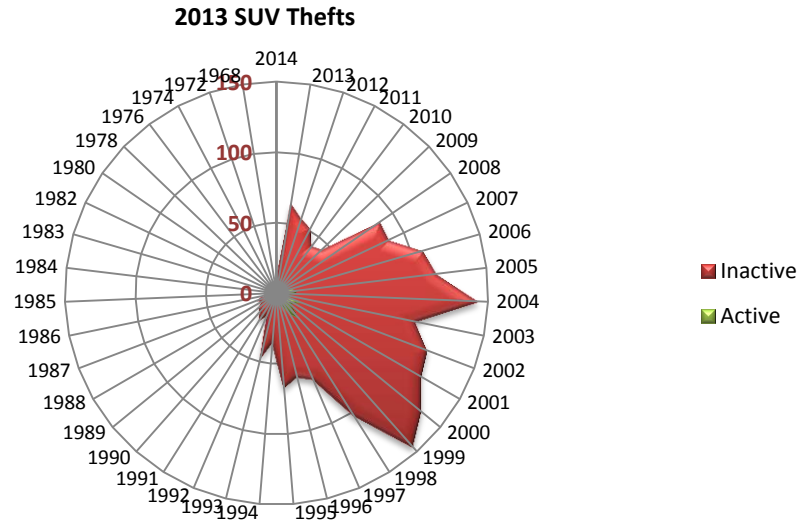


- In 2013, 95% of reported stolen passenger vehicles manufactured within the past 23 years (1990-2013).
- In 2013, 61% of reported stolen motorcycles were manufactured within a ten year period (1992-2002).
- In 2013, the top 10 leading stolen passenger vehicles accounted for 45% of all passenger thefts.
- The top 5 leading passenger vehicle thefts in Colorado in 2013 were Honda Accord, followed by Honda Civic, Toyota Camry, Acura Integra and Saturn S Series.

Passenger Vehicles									
Rank	Make	Model	Inactive	% Inactive	Active	% Active	Total	% Total	
1	Honda	Accord	830	93%	58	7%	888	16%	
2	Honda	Civic	650	89%	77	11%	727	13%	
3	Toyota	Camry	161	80%	41	20%	202	4%	
4	Acura	Integra	175	92%	16	8%	191	4%	
5	Saturn	S Series	147	89%	18	11%	165	3%	
6	Toyota	Corolla	100	84%	19	16%	119	2%	
7	Subaru	Impreza	87	91%	9	9%	96	2%	
8	Subaru	Legacy	84	91%	8	9%	92	2%	
9	Chevrolet	Impala	76	92%	7	8%	83	2%	
10	Ford	Taurus	64	82%	14	18%	78	1%	
11	Nissan	Altima	60	83%	12	17%	72	1%	
12	Chevrolet	Malibu	55	90%	6	10%	61	1%	
13	Volkswagen	Jetta	56	97%	2	3%	58	1%	
14	Chevrolet	Cavalier	50	89%	6	11%	56	1%	
15	Nissan	Maxima	51	93%	4	7%	55	1%	
16	Ford	Focus	48	92%	4	8%	52	1%	
17	Ford	Mustang	44	86%	7	14%	51	1%	
18	Dodge	Stratus	45	94%	3	6%	48	1%	
19	Pontiac	Grand Am	45	94%	3	6%	48	1%	
20	Dodge	Intrepid	40	85%	7	15%	47	1%	

2013 SUV Thefts

- In 2013, there were 2,174 stolen SUV vehicles captured in the Colorado Stolen Vehicle Database Repository.
- In 2013, SUV vehicles accounted for 19% of all reported stolen vehicles.
- In 2013, 88.4% of reported stolen SUV vehicles were recovered.
- In 2013, an average of 5.95 SUV vehicles were stolen every day in Colorado.

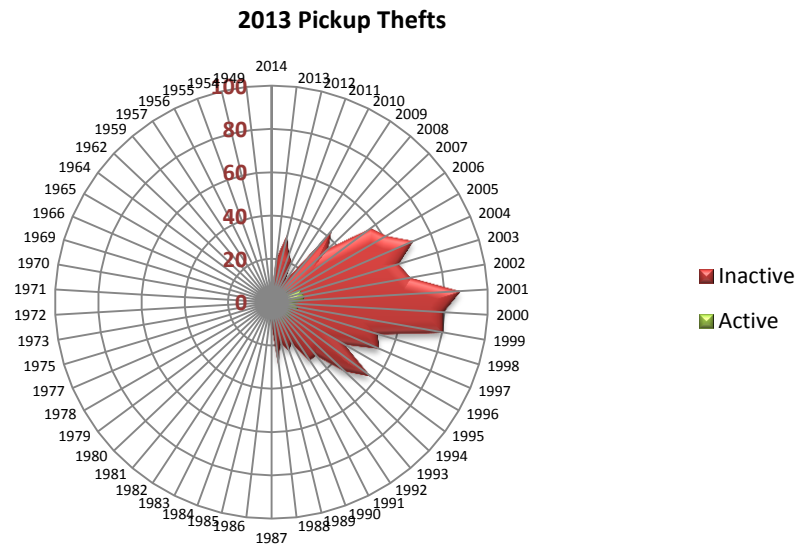


- In 2013, 77% of reported stolen SUV vehicles manufactured within the past 15 years (1998 - 2013).
- In 2013, 55% of reported SUV motorcycles were manufactured within an 8 year period (1998 - 2006).
- In 2013, the top 10 leading stolen SUV vehicles accounted for 49% of all SUV thefts.
- The top 5 leading SUV vehicle thefts in Colorado in 2013 were Jeep Grand Cherokee, followed by Jeep Cherokee, Ford Explorer, Toyota 4 Runner and Chevrolet Blazer.

SUV Vehicles								
Rank	Make	Model	Inactive	% Inactive	Active	% Active	Total	% Total
1	Jeep	Grand Cherokee	182	91%	19	9%	201	9%
2	Jeep	Cherokee	166	94%	11	6%	177	8%
3	Ford	Explorer	126	88%	17	12%	143	7%
4	Toyota	4Runner	79	76%	25	24%	104	5%
5	Chevrolet	Blazer	66	87%	10	13%	76	3%
6	Chevrolet	Tahoe	55	80%	14	20%	69	3%
7	Dodge	Durango	65	96%	3	4%	68	3%
8	Jeep	Liberty	59	92%	5	8%	64	3%
9	Ford	Expedition	45	83%	9	17%	54	2%
10	Jeep	Wrangler	49	91%	5	9%	54	2%
11	Chevrolet	Suburban	38	79%	10	21%	48	2%
12	Nissan	Pathfinder	42	88%	6	13%	48	2%
13	Honda	CR-V	37	90%	4	10%	41	2%
14	Subaru	Forester	38	95%	2	5%	40	2%
15	Jeep	Wrangler Unlimited	30	83%	6	17%	36	2%
16	Chevrolet	TrailBlazer	30	86%	5	14%	35	2%
17	Ford	Escape	28	90%	3	10%	31	1%
18	GMC	Yukon	24	83%	5	17%	29	1%
19	Nissan	Xterra	28	97%	1	3%	29	1%
20	Toyota	RAV4	24	89%	3	11%	27	1%

2013 Pickup Truck Thefts

- In 2013, there were 1,510 stolen pickup vehicles captured in the Colorado Stolen Vehicle Database Repository.
- In 2013, pickup vehicles accounted for 13% of all reported stolen vehicles.
- In 2013, 80.8% of reported stolen pickup vehicles were recovered.
- In 2013, an average of 4.13 SUV vehicles were stolen every day in Colorado.

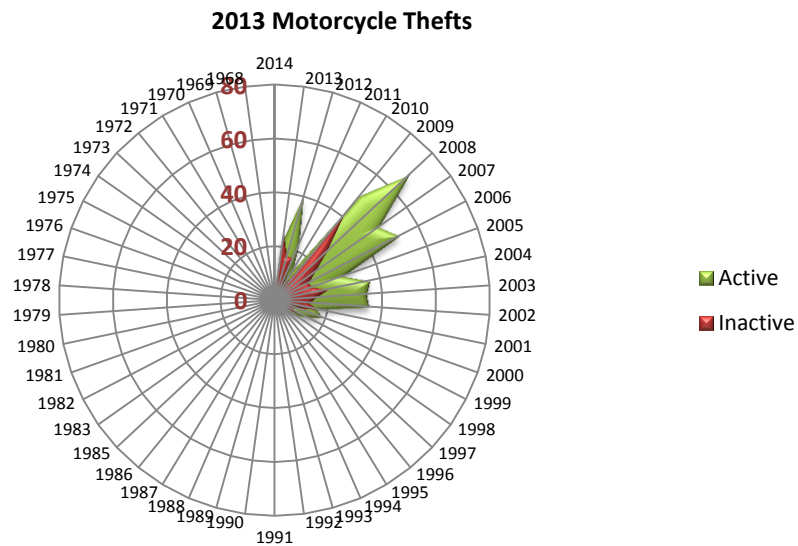


- In 2013, 46% of reported stolen pickup vehicles manufactured within the past 13 years (2001 - 2014).
- In 2013, the top 10 leading stolen pickup vehicles accounted for 70% of all pickup thefts.
- The top 5 leading pickup truck vehicle thefts in Colorado in 2013 were Ford F150, followed by Dodge Ram, Chevrolet Silverado, Ford F250 and Ford F350.

Pickup Truck Vehicles								
Rank	Make	Model	Inactive	% Inactive	Active	% Active	Total	% Total
1	Ford	F150	166	83%	35	17%	201	13%
2	Dodge	Ram Pickup	135	80%	33	20%	168	11%
3	Chevrolet	Silverado	113	90%	13	10%	126	8%
4	Ford	F250	94	80%	23	20%	117	8%
5	Ford	F350	77	79%	20	21%	97	6%
6	Ford	Ranger	77	88%	11	13%	88	6%
7	GMC	Sierra	62	79%	16	21%	78	5%
8	Dodge	Dakota	59	88%	8	12%	67	4%
9	Toyota	Tacoma	53	91%	5	9%	58	4%
10	Chevrolet	S10	50	89%	6	11%	56	4%
11	Chevrolet	K1500	43	80%	11	20%	54	4%
12	Toyota	Pickup	40	74%	14	26%	54	4%
13	Nissan	Pickup	25	68%	12	32%	37	2%
14	Toyota	Tundra	26	93%	2	7%	28	2%
15	Chevrolet	C1500	17	68%	8	32%	25	2%
16	Nissan	Frontier	15	83%	3	17%	18	1%
17	Chevrolet	(blank)	5	31%	11	69%	16	1%
18	Chevrolet	Avalanche	5	38%	8	62%	13	1%
19	Chevrolet	Colorado	13	100%	0	0%	13	1%
20	Nissan	Titan	10	77%	3	23%	13	1%

2013 Motorcycle Thefts

- In 2013, there were 898 stolen motorcycles captured in the Colorado Stolen Vehicle Database Repository.
- In 2013, motorcycles accounted for 7.9% of all reported stolen vehicles.
- In 2013, 34% of reported stolen motorcycles were recovered.
- In 2013, an average of 2.5 motorcycles were stolen every day in Colorado.



- In 2013, 86% of reported stolen motorcycles were manufactured within the past 15 years.
- In 2013, 53% of reported stolen motorcycles were manufactured within the past 7 years.
- In 2013, the top 5 leading motorcycle makes were 66.5% of all motorcycle thefts.

Rank	Make	Active	Inactive	Total
1	Honda	136	68	204
2	Yamaha	109	45	154
3	Kawasaki	48	37	85
4	Suzuki	49	34	83
5	Harley-Davidson	44	28	72

2013 Theft Funding Guidance

Based on the 2013 data, the CATPA Board will use the following derivatives as guidance for funding proposed grant applications. These apportionments are merely a guide, as the Board will not be constrained or regulated by such, but will provide funding to proposals based on established qualitative criteria based evaluation.¹

1. FY15 Funding Level. The CATPA Office anticipates funding for FY15 grant applications to be approximately \$4,476,126.
2. Funding Initiatives. Pursuant to C.R.S. 42-5-112, the CATPA Board is authorized to fund programs to prevent and reduce auto theft in the realms of prevention, education, enforcement, training, prosecution and rehabilitation (of first offenders of auto theft). As such, the following initiatives are anticipated to be funded with guidance towards percentile allocation for FY15.

Initiative	Total Funding	Percentage	Guidance Award
Prevention/Education	\$ 4,476,126.00	10%	\$ 447,612.60
Intelligence	\$ 4,476,126.00	7%	\$ 313,328.82
Training	\$ 4,476,126.00	5%	\$ 223,806.30
Prosecution	\$ 4,476,126.00	7%	\$ 313,328.82
Rehabilitation	\$ 4,476,126.00	1%	\$ 44,761.26
Enforcement	\$ 4,476,126.00	70%	\$ 3,133,288.20
Total			\$ 4,476,126.00

3. Calculating Weighting Factors for Funding Guidance in CATPA Areas. Using the [CATPA Area Map](#), a formula based derivation is used for guidance on funding levels for each area. This derivation is based on the population density, land acreage, and auto theft incidence.
 - a. Population Density. The population density is given a total weighting factor of 25% towards the total amount of guidance funding.

Reporting Area	Population	% Population	Population Weight
Four Corners	239,111	4.6%	1.15
Gold Camp	2,625,607	50.6%	12.65
Grand River	375,932	7.2%	1.8
High Prairie	130,126	2.5%	0.625
Longs Peak	880,844	17.0%	4.25
Pikes Peak	935,962	18.0%	4.5
Total	5,187,582	100.0%	25

- b. Land Area. The land area is given a total weighting factor of 5% towards the total amount of guidance funding.

Reporting Area	Land Area	% Land Area	Land Weight
Four Corners	24,371	23.4%	1.17
Gold Camp	8,376	8.0%	0.4
Grand River	22,587	21.7%	1.085
High Prairie	22,812	21.9%	1.095
Longs Peak	9,006	8.7%	0.435
Pikes Peak	16,945	16.3%	0.815
Total	104,096	100.0%	5

¹ See FY15 Grant Managers Roundtable Handout, Chapter 4 – Evaluation Elements for discussion on criteria based evaluation.

- c. Theft Incidence. The number of auto thefts occurring within each area is given a weighting factor of 70% towards the total amount of guidance funding.

Reporting Area	2013 Thefts	% Thefts	Weight
Four Corners	170	1.50%	1.052725
Gold Camp	7,472	66.10%	46.27035
Grand River	304	2.69%	1.882519
High Prairie	125	1.11%	0.774062
Longs Peak	796	7.04%	4.929229
Pikes Peak	2,437	21.56%	15.09112
Total	11,304	100.00%	70

- d. Sum Weight Factor. A combination of the weighting factors for population, land area and auto theft incidence is combined to determine the Sum Weight Factor. This Sum Weight Factor will be used to derive the total amount of guidance funding applied to the initiatives.

Reporting Area	Theft Weight	Population Weight	Land Weight	Sum Weight
Four Corners	1.052724699	1.15	1.17	3.372724699
Gold Camp	46.27034678	12.65	0.4	59.32034678
Grand River	1.882519462	1.8	1.085	4.767519462
High Prairie	0.774062279	0.625	1.095	2.494062279
Longs Peak	4.929228592	4.25	0.435	9.614228592
Pikes Peak	15.09111819	4.5	0.815	20.40611819
Total	70	25	5	100

4. Guidance Funding in CATPA Areas. Using the projected revenues and Sum Weighting Factor for each of the CATPA Areas, the guidance funding for each CATPA Area is derived. This is a guidance funding and is only used for planning and assistance, but will not override or regulate the CATPA Board's decision for grant funding.

Initiative	Reporting Area	Sum Weight	Funding	Guidance Award
All	Four Corners	3.37%	\$ 4,476,126.00	\$ 150,967.41
All	Gold Camp	59.32%	\$ 4,476,126.00	\$ 2,655,253.47
All	Grand River	4.77%	\$ 4,476,126.00	\$ 213,400.18
All	High Prairie	2.49%	\$ 4,476,126.00	\$ 111,637.37
All	Longs Peak	9.61%	\$ 4,476,126.00	\$ 430,344.99
All	Pikes Peak	20.41%	\$ 4,476,126.00	\$ 913,403.56
		100%	\$ 4,476,126.00	\$ 4,475,006.97

5. Enforcement Guidance Funding. Using the projected revenues and Sum Weighting Factor for each of the CATPA Areas, the enforcement guidance funding is derived. Again, this guidance funding is only used for planning and assistance, but will not override or regulate the CATPA Board's decision for grant awarding.

Initiative	Reporting Area	Sum Weight	Funding	Guidance Award
Enforcement	Four Corners	3.37%	\$ 3,133,288.20	\$ 105,677.19
Enforcement	Gold Camp	59.32%	\$ 3,133,288.20	\$ 1,858,677.43
Enforcement	Grand River	4.77%	\$ 3,133,288.20	\$ 149,380.12
Enforcement	High Prairie	2.49%	\$ 3,133,288.20	\$ 78,146.16
Enforcement	Longs Peak	9.61%	\$ 3,133,288.20	\$ 301,241.49
Enforcement	Pikes Peak	20.41%	\$ 3,133,288.20	\$ 639,382.49
		100%	\$ 3,133,288.20	\$ 3,132,504.88

6. Education Guidance Funding. Using the projected revenues and Sum Weighting Factor for each of the CATPA Areas, the education guidance funding is derived. Again, this guidance funding is only used for planning and assistance, but will not override or regulate the CATPA Board’s decision for grant awarding.

Initiative	Reporting Area	Sum Weight	Funding	Guidance Award
Education	Four Corners	3.37%	\$ 447,612.60	\$ 15,096.74
Education	Gold Camp	59.32%	\$ 447,613.60	\$ 265,525.94
Education	Grand River	4.77%	\$ 447,614.60	\$ 21,340.11
Education	High Prairie	2.49%	\$ 447,615.60	\$ 11,163.81
Education	Longs Peak	9.61%	\$ 447,616.60	\$ 43,034.88
Education	Pikes Peak	20.41%	\$ 447,617.60	\$ 91,341.38
		100%	\$ 447,618.60	\$ 447,506.70

7. Prosecution Guidance Funding. Using the projected revenues and Sum Weighting Factor for each of the CATPA Areas, the prosecution guidance funding is derived. Again, this guidance funding is only used for planning and assistance, but will not override or regulate the CATPA Board’s decision for grant awarding.

Initiative	Reporting Area	Sum Weight	Funding	Guidance Award
Prosecution	Four Corners	3.37%	\$ 313,328.82	\$ 10,567.72
Prosecution	Gold Camp	59.32%	\$ 313,328.82	\$ 185,867.74
Prosecution	Grand River	4.77%	\$ 313,328.82	\$ 14,938.01
Prosecution	High Prairie	2.49%	\$ 313,328.82	\$ 7,814.62
Prosecution	Longs Peak	9.61%	\$ 313,328.82	\$ 30,124.15
Prosecution	Pikes Peak	20.41%	\$ 313,328.82	\$ 63,938.25
		100%	\$ 313,328.82	\$ 313,250.49

8. Intelligence Guidance Funding. Using the projected revenues and Sum Weighting Factor for each of the CATPA Areas, the intelligence guidance funding is derived. Again, this guidance funding is only used for planning and assistance, but will not override or regulate the CATPA Board’s decision for grant awarding.

Initiative	Reporting Area	Sum Weight	Funding	Guidance Award
Intelligence	Four Corners	3.37%	\$ 313,328.82	\$ 10,567.72
Intelligence	Gold Camp	59.32%	\$ 313,328.82	\$ 185,867.74
Intelligence	Grand River	4.77%	\$ 313,328.82	\$ 14,938.01
Intelligence	High Prairie	2.49%	\$ 313,328.82	\$ 7,814.62
Intelligence	Longs Peak	9.61%	\$ 313,328.82	\$ 30,124.15
Intelligence	Pikes Peak	20.41%	\$ 313,328.82	\$ 63,938.25
		100%	\$ 313,328.82	\$ 313,250.49

9. Training Guidance Funding. Using the projected revenues and Sum Weighting Factor for each of the CATPA Areas, the training guidance funding is derived. Again, this guidance funding is only used for planning and assistance, but will not override or regulate the CATPA Board’s decision for grant awarding.

Initiative	Reporting Area	Sum Weight	Funding	Guidance Award
Training	Four Corners	3.37%	\$ 223,806.30	\$ 7,548.37
Training	Gold Camp	59.32%	\$ 223,806.30	\$ 132,762.67
Training	Grand River	4.77%	\$ 223,806.30	\$ 10,670.01
Training	High Prairie	2.49%	\$ 223,806.30	\$ 5,581.87
Training	Longs Peak	9.61%	\$ 223,806.30	\$ 21,517.25
Training	Pikes Peak	20.41%	\$ 223,806.30	\$ 45,670.18
		100%	\$ 223,806.30	\$ 223,750.35

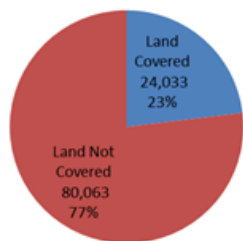
10. Rehabilitation Guidance Funding. Using the projected revenues and Sum Weighting Factor for each of the CATPA Areas, the rehabilitation guidance funding is derived. Again, this guidance funding is only used for planning and assistance, but will not override or regulate the CATPA Board's decision for grant awarding.

Initiative	Reporting Area	Sum Weight	Funding	Guidance Award
Rehabilitation	Four Corners	3.37%	\$ 44,761.26	\$ 1,509.67
Rehabilitation	Gold Camp	59.32%	\$ 44,761.26	\$ 26,552.53
Rehabilitation	Grand River	4.77%	\$ 44,761.26	\$ 2,134.00
Rehabilitation	High Prairie	2.49%	\$ 44,761.26	\$ 1,116.37
Rehabilitation	Longs Peak	9.61%	\$ 44,761.26	\$ 4,303.45
Rehabilitation	Pikes Peak	20.41%	\$ 44,761.26	\$ 9,134.04
		100%	\$ 44,761.26	\$ 44,750.07

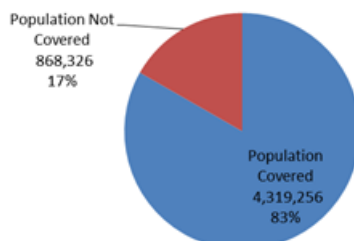
11. 2012 CATPA Funding Experience

In 2012, CATPA funded initiatives with partnerships for an average of 77% of the land area of Colorado, including 83% of the population base and 94% of the problem areas with auto theft.

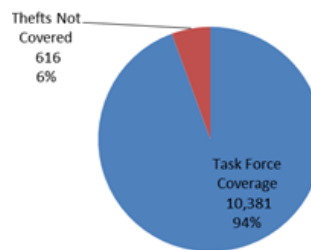
Land Coverage by LE Grantees



Population Coverage by LE Grantees



Theft Coverage by LE Grantees



CATPA Area	Total Land (sq.mi.)	Land Covered	Land Not Covered
Gold Camp	3,758	3,758	-
Grand River	51,951	9,038	42,913
High Prairie	25,952	-	25,952
Longs Peak	8,713	6,705	2,008
Pikes Peak	13,722	4,532	9,190
Total	104,096	24,033	80,063

CATPA Area	2012 Population	Population Covered	Population Not Covered
Gold Camp	2,532,982	2,532,982	-
Grand River	656,061	252,124	403,937
High Prairie	130,490	-	130,490
Longs Peak	966,266	721,145	245,121
Pikes Peak	901,783	813,005	88,778
Total	5,187,582	4,319,256	868,326

CATPA Area	2012 Thefts	Task Force Coverage	Thefts Not Covered
Gold Camp	7,110	7,110	-
Grand River	569	276	293
High Prairie	94	-	94
Longs Peak	787	616	171
Pikes Peak	2,437	2,379	58
Total	10,997	10,381	616

2011 to 2013 Colorado Auto Thefts by County

County	CATPA Area	Land Area (sq.mi.)	2010 Population	2011 Population	2012 Population	2011 Thefts	2012 Thefts	2013 Thefts
Adams County	Gold Camp	1,182.3	443,473	451,294	459,598	997	1,259	2,372
Alamosa County	Four Corners	723.2	15,908	16,103	16,148		22	18
Arapahoe County	Gold Camp	804.4	574,907	585,712	595,546	1,337	1,329	598
Archuleta County	Four Corners	1,354.5	12,063	11,995	12,070	1	8	9
Baca County	High Prairie	2,558.5	3,782	3,811	3,751	1	1	2
Bent County	High Prairie	1,541.1	6,507	6,295	5,773		3	4
Boulder County	Longs Peak	740.5	296,318	300,406	305,318	252	226	244
Broomfield County	Gold Camp	33.6	56,102	57,193	58,298	49	45	45
Chaffee County	Pikes Peak	1,014.1	17,796	18,026	18,150	13	8	15
Cheyenne County	High Prairie	1,781.9	1,832	1,870	1,874			1
Clear Creek County	Grand River	396.5	9,098	9,040	9,026	14	13	9
Conejos County	Four Corners	1,290.2	8,278	8,313	8,275		3	6
Costilla County	Four Corners	1,229.4	3,528	3,646	3,594			2
Crowley County	High Prairie	800.3	5,840	5,785	5,365		5	9
Custer County	Pikes Peak	739.2	4,274	4,226	4,249	2	3	5
Delta County	Four Corners	1,149.4	30,885	30,366	30,432	1	22	28
Denver County	Gold Camp	155.7	603,497	619,285	634,265	3,365	3,434	3,226
Dolores County	Four Corners	1,076.9	2,060	2,029	1,994	2		
Douglas County	Gold Camp	842.3	286,951	292,362	298,215	25	121	125
Eagle County	Grand River	1,700.8	52,076	51,738	51,874	8	15	11
El Paso County	Pikes Peak	2,128.6	626,682	636,456	644,964	1,363	1,901	1,856
Elbert County	Gold Camp	1,849.1	23,076	23,233	23,383	1	11	10
Fremont County	Pikes Peak	1,533.1	46,859	47,345	46,788	34	25	35
Garfield County	Grand River	2,958.2	56,116	56,042	56,953	22	68	46
Gilpin County	Gold Camp	150.2	5,461	5,460	5,491	5	10	19
Grand County	Grand River	1,868.5	14,778	14,543	14,195		7	4
Gunnison County	Four Corners	3,259.2	15,389	15,454	15,475	18	9	13
Hinsdale County	Four Corners	1,123.4	844	834	810			
Huerfano County	Pikes Peak	1,592.4	6,652	6,503	6,596		12	1
Jackson County	Longs Peak	1,619.8	1,384	1,379	1,348			1
Jefferson County	Gold Camp	772.9	535,297	538,854	545,358	824	967	1,075
Kiowa County	High Prairie	1,785.9	1,394	1,449	1,444			

County	CATPA Area	Land Area (sq.mi.)	2010 Population	2011 Population	2012 Population	2011 Thefts	2012 Thefts	2013 Thefts
Kit Carson County	High Prairie	2,162.4	8,249	8,169	8,094	5	9	8
La Plata County	Four Corners	1,700.4	51,495	51,924	52,401		49	38
Lake County	Grand River	383.6	7,268	7,377	7,338		1	3
Larimer County	Longs Peak	2,631.8	300,426	305,091	310,487	229	212	216
Las Animas County	Pikes Peak	4,773.3	15,399	15,035	14,945		14	14
Lincoln County	Gold Camp	2,585.2	5,469	5,403	5,453	1	7	2
Logan County	High Prairie	1,845.3	22,773	22,720	22,631	17	26	30
Mesa County	Grand River	3,345.7	146,475	147,481	147,848	229	182	174
Mineral County	Four Corners	878.2	705	711	709	1	7	
Moffat County	Grand River	4,755.9	13,810	13,410	13,200	13	22	14
Montezuma County	Four Corners	2,035.8	25,530	25,432	25,431	16	23	19
Montrose County	Four Corners	2,246.4	41,177	40,877	40,725	41	35	28
Morgan County	High Prairie	1,293.8	28,165	28,562	28,472	10	16	27
Otero County	High Prairie	1,267.7	18,886	18,900	18,698	7	17	22
Ouray County	Four Corners	542.3	4,461	4,435	4,530		3	2
Park County	Pikes Peak	2,209.4	16,256	16,063	16,029		8	7
Phillips County	High Prairie	688.3	4,462	4,364	4,367	1	1	2
Pitkin County	Grand River	970.4	17,158	17,119	17,263	5	8	7
Prowers County	High Prairie	1,645.4	12,552	12,499	12,389	4	6	9
Pueblo County	Pikes Peak	2,396.8	159,570	160,346	160,852	463	471	493
Rio Blanco County	Grand River	3,226.2	6,644	6,836	6,857	6	5	5
Rio Grande County	Four Corners	913.1	12,011	11,939	11,943	5	1	3
Routt County	Grand River	2,362.1	23,476	23,293	23,334	29	19	12
Saguache County	Four Corners	3,168.3	6,125	6,203	6,304		3	1
San Juan County	Four Corners	389.0	708	700	690	5	1	
San Miguel County	Four Corners	1,290.8	7,356	7,480	7,580		2	3
Sedgwick County	High Prairie	548.8	2,372	2,377	2,383	1	2	
Summit County	Grand River	618.9	28,037	27,864	28,044	18	15	19
Teller County	Pikes Peak	558.6	23,448	23,317	23,389	8	11	11
Washington County	High Prairie	2,522.9	4,803	4,820	4,766	5	5	1
Weld County	Longs Peak	4,013.8	254,081	258,351	263,691	235	288	335
Yuma County	High Prairie	2,369.6	10,018	10,157	10,119		1	10
Total		104,096.0	5,048,472	5,116,302	5,187,582	9,688	10,997	11,304

2013 Colorado Auto Thefts by City

Reporting Agency	Active	Inactive	Total
Adams County	119	323	442
Alamosa	3	6	9
Alamosa County	5		5
Alamosa County - CSP		4	4
Arapahoe County	33	83	116
Archuleta County	1	4	5
Arvada	33	141	174
Aspen	2	2	4
Ault	2	2	4
Aurora	171	762	933
Aurora - U. of CO.		2	2
Avon		2	2
Baca County		1	1
Basalt		1	1
Bayfield	1		1
Bent County	2	2	4
Berthoud	1	2	3
Black Hawk	3	7	10
Boulder	20	72	92
Boulder - U. of Boulder	1	2	3
Boulder County	3	18	21
Breckenridge		2	2
Brighton	16	42	58
Broomfield County	9	36	45
Brush	2	5	7
Buena Vista	1	1	2
Canon City	4	13	17
Carbondale		5	5
Castle Rock	5	23	28
Centennial	25	62	87
Center		1	1
Central City	3		3
Chaffee County	2	3	5

Reporting Agency	Active	Inactive	Total
Cherry Hills	1	3	4
Cheyenne County		1	1
Clear Creek County	1	4	5
Collbran		1	1
Colorado Springs	256	1350	1606
Colorado Springs - CSP	1		1
Colorado Springs - U. of Colorado		2	2
Colorado Springs - US Army MP Ft. Carson	4	8	12
Commerce City	48	105	153
Conejos County	2	2	4
Cortez	1	11	12
Costilla County		2	2
Craig	1	4	5
Craig - CSP	1	4	5
Crested Butte		1	1
Cripple Creek		2	2
Crowley County	5	4	9
Custer County	3	2	5
Dacano	2	6	8
Del Norte		1	1
Delta	2	8	10
Delta County	10	6	16
Denver	572	2639	3211
Denver - CSP	2	4	6
Denver - Dept. Vetrans Affairs		1	1
Denver PD	1	1	2
Douglas County	25	46	71
Durango	5	9	14
Durango/La Plata Emerg. Com. Ctr.		1	1
Eagle County	1	3	4
Eaton	1	1	2
Edgewater	6	20	26
El Paso County	46	152	198

Reporting Agency	Active	Inactive	Total
Elbert County	2	6	8
Englewood	42	147	189
Erie		4	4
Estes Pk.		1	1
Evans	7	16	23
Federal Heights	10	51	61
Federal Protective Services	3	3	6
Firestone	1	3	4
Florence		1	1
Fort Collins	20	86	106
Fort Collins - Colorado St. U.	1	2	3
Fort Lupton	2	9	11
Fountain	9	20	29
Frederick	2	3	5
Fremont County	8	9	17
Frisco	1		1
Fruita	1	6	7
Ft. Morgan	2	6	8
Garfield County	6	6	12
Georgetown		2	2
Gilpin County	4	2	6
Glendale	7	24	31
Glenwood Springs	6	10	16
Glenwood Springs - CSP		1	1
Golden	3	20	23
Granby	1		1
Grand County		2	2
Grand Junction	22	72	94
Greeley	23	127	150
Greeley - U. Northern Co.		1	1
Greenwood Village	8	10	18
Gunnison	2	8	10
Gunnison County		2	2
Hayden		1	1

Reporting Agency	Active	Inactive	Total
Holyoke		1	1
Hotchkiss		2	2
Idaho Springs	2		2
Jackson County		1	1
Jefferson County	38	114	152
Johnstown	2	1	3
Kit Carson County	2	4	6
Kremmling		1	1
La Jara	1	1	2
La Junta	1	7	8
La Plata County	11	9	20
La Salle		2	2
Lafayette	4	9	13
Lake County		1	1
Lakeside		1	1
Lakewood	92	423	515
Lakewood - ATICC		1	1
Lakewood - Red Rocks Com. Col.		1	1
Lamar	5	2	7
Larimer County	12	29	41
Las Animas County	7		7
Leadville		2	2
Lincoln County	1	1	2
Littleton	19	79	98
Littleton - Arapahoe Com. Col.		1	1
Lochbuie	1	5	6
Logan County	4	10	14
Lone Tree	1	10	11
Longmont	25	71	96
Louisville	2	12	14
Loveland	19	42	61
Mancos		1	1
Manitou Springs		5	5
Mesa County	18	53	71

Reporting Agency	Active	Inactive	Total
Milliken		1	1
Moffat County	3	1	4
Monte Vista	1		1
Montezuma County	2	4	6
Montrose	2	5	7
Montrose County	10	9	19
Montrose County- CSP		1	1
Monument		3	3
Morgan County	5	7	12
Morrison	1		1
Mountain View	1	2	3
Nederland		1	1
New Castle	1		1
Northglenn	18	89	107
Olathe		1	1
Otero County		7	7
Ouray County	1	1	2
Pagosa Springs	1	3	4
Palisade		1	1
Parachute		1	1
Park County	4	3	7
Parker	4	11	15
Phillips County		1	1
Pitkin County	1	2	3
Platteville		4	4
Prowers County	1	1	2
Pueblo	108	313	421
Pueblo Co.	24	46	70
Pueblo Reg. Com. Ctr. - CSP		2	2
Rifle	1	9	10
Rio Blanco County	4	1	5
Rio Grande County	1		1
Rocky Ford	4	3	7
Routt County		2	2

Reporting Agency	Active	Inactive	Total
Salida	4	4	8
San Miguel County		1	1
Sheridan	21	33	54
Silma		2	2
Silverthorne	1	3	4
Southern Ute Tribal	1	1	2
Springfield		1	1
Steamboat Springs	3	6	9
Sterling	3	13	16
Stratton	1	1	2
Summit County	4	8	12
Teller County	2	2	4
Telluride		2	2
Thornton	78	259	337
Timnath	1		1
Trinidad	1	6	7
Vail		4	4
Walsenburg		1	1
Washington County	1		1
Weld County	55	52	107
Westminster	54	224	278
Wheat Ridge	29	150	179
Windsor	3	1	4
Woodland PARK	1	4	5
Wray	1		1
Yuma	1	1	2
Yuma County	3	4	7
Grand Total	2390	8914	11304

