

2021 Sage grouse Harvest Report

The 2021 Sage grouse report provides information on the estimated harvest of Sage grouse. A post-season harvest survey was conducted by phone and email. A stratified random sample of 3,500 potential Sage grouse hunters was drawn from among Harvest Information Program (HIP) participants. The sample was stratified as follows:

- 1 = Not Likely to hunt
- 2 = Somewhat Likely to hunt
- 3 = Very Likely to hunt
- 4 = Very Likely to hunt for 3 or more years

Harvest Data Summary

The survey contacted 1,536 (43.8% response rate) hunters in 2021. Approximately 7.3% (113) reported hunting Sage grouse during the season. Fifty (50) hunters (44%) reported that they successfully harvested Sage grouse. Statewide harvest was estimated at **727 ± 399 (327 – 1,126)**.

Comparison with 2020 survey results:

Comparing the figures for the Sage-grouse season for both years, the estimated harvest in 2021 at **727 ± 399 (327 – 1,126)** is similar to 2020 when an estimated 737 ± 412 (325 – 1149) birds were harvested. Hunter numbers remained similar at **745 ± 168 (577 – 913)** from **791 ± 208 (583 – 999)** in 2020. Total days hunted increased slightly in 2021, when hunters reported **2,074 ± 399 (1,424 – 2,725)** days compared to **1,868 ± 549 (1,318 – 2,417)** in 2020.

Hunter Statistics and Harvest Estimates by Strata and County

The following summary tables provide estimates of hunter numbers, days in the field and Sage-grouse harvest statewide and by county. Estimates are followed by the standard error of the estimate, and 95% upper (UCI) and lower (LCI) confidence intervals around the estimate.

2021 Sage grouse Harvest by Strata

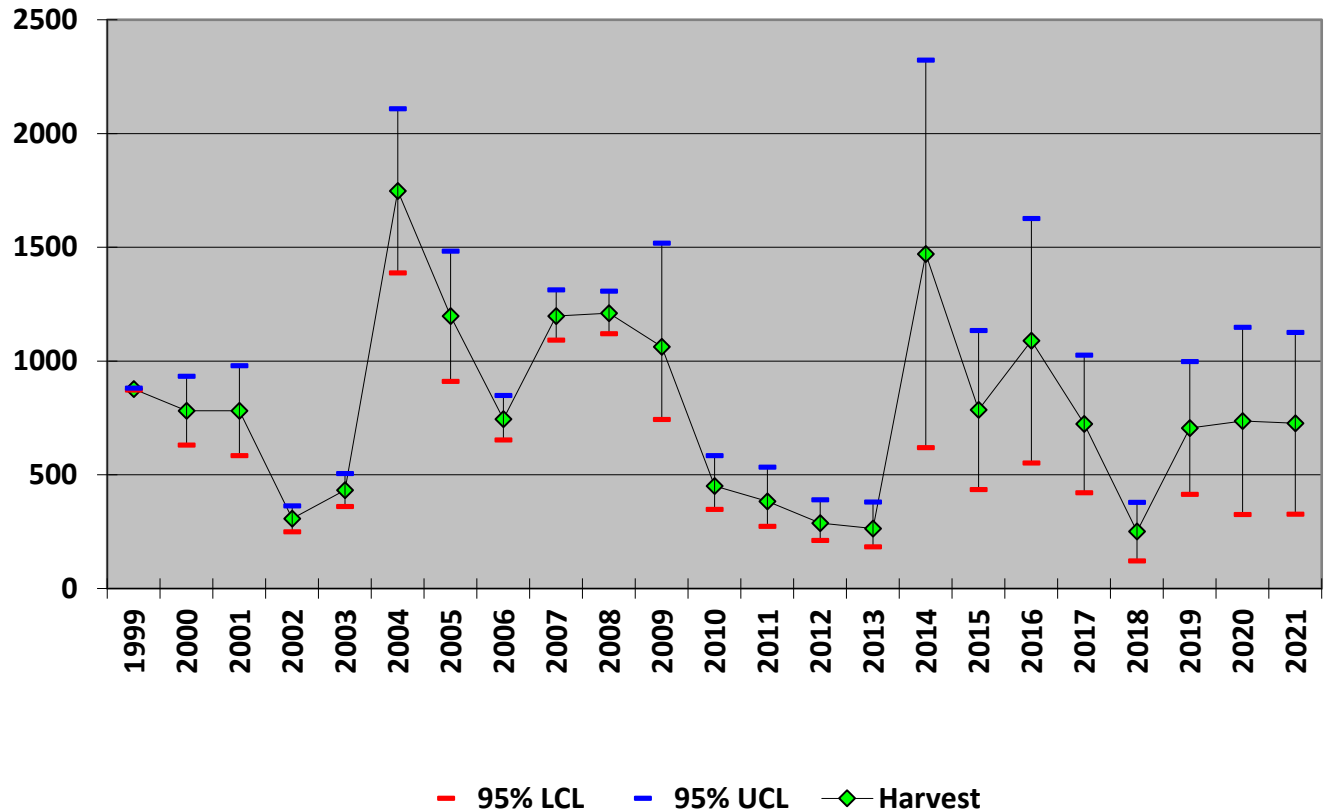
Strata	Hunters	SE(hunters)	LCI		UCI		Days		SE	Harvest	SE(harvest)	LCI		UCI	CV %
			Hunters	Hunters	Hunters	Hunters	Hunted	(Days Hunted)	Days			Days	Harvest	Harvest	
(1) Not Likely	154	58	76	315	462	216	193	1106		286	188	89	926	66%	
(2) Somewhat Likely	119	48	55	256	377	197	144	987		40	40	8	203	100%	
(3) Very Likely	376	38	308	459	1041	153	781	1388		319	64	216	472	20%	
(4) Very Likely for >3 years	95	13	73	125	194	32	140	268		81	22	48	136	27%	
Total	745	86	577	913	2074	332	1424	2725		727	204	327	1126	28%	

2021 Sage grouse Harvest by County

County	Hunters	SE(hunters)	LCI		UCI		Days		SE	Harvest	SE(harvest)	LCI		UCI
			Hunters	Hunters	Hunters	Hunters	Hunted	(Days Hunted)	Days			Days	Harvest	Harvest
Jackson	266	46	189	373	678	199	386	1191		246	63	149	404	
Summit	540	194	273	1069	340	126	168	686		174	101	61	499	
Grand	336	101	189	597	492	164	261	930		158	133	38	665	
Moffat	446	77	319	623	306	56	215	437		95	28	55	166	
Other	512	206	240	1093	276	126	118	648		53	38	15	187	
Rio Blanco	88	88	17	450	22	22	4	113		0	0	NA	NA	
Total	745	86	577	913	2074	332	1424	2725		727	204	327	1126	

*Hunters could provide up to 3 counties when asked "where did you harvest sage grouse?"

Sage grouse Harvest Estimates, Colorado (1999-2021)



Sage grouse Hunters and Harvest Colorado (1999-2021)

