

## 2020 Sage-grouse Harvest Report

The 2020 Sage-grouse report provides information on the estimated harvest of Sage-grouse. A post-season harvest survey was conducted by phone and email. A stratified random sample of 3,500 potential Sage-grouse hunters was drawn from among Harvest Information Program (HIP) participants. The sample was stratified as follows:

- 1 = Not Likely to hunt
- 2 = Somewhat Likely to hunt
- 3 = Very Likely to hunt
- 4 = Very Likely to hunt for 3 or more years

### **Harvest Data Summary**

The survey contacted 1,505 (43.0% response rate) hunters in 2020. Approximately 4.5% (68) reported hunting Sage-grouse during the season. Thirty (30) hunters (44%) reported that they successfully harvested Sage-grouse. **Statewide harvest was estimated at 737 ± 412 (325 – 1149).**

### **Comparison with 2019 survey results:**

Comparing the figures for the Sage-grouse season for both years, the estimated harvest in 2020 is similar to 2019 when an estimated 706 ± 292 (414 - 998) birds were harvested. Hunter numbers decreased in 2020 at **791 ± 208 (583 – 999)** from 1,238 ± 260 (978 – 1499) in 2019. Total days hunted decreased in 2020, when hunters reported **1,868 ± 549 (1,318 – 2,417)** days compared to 3,567 ± 1,070 (2,496 – 4,638) in 2019.

### **Hunter Statistics and Harvest Estimates by Strata and County**

The following summary tables provide estimates of hunter numbers, days in the field and Sage-grouse harvest statewide and by county. Estimates are followed by the standard error of the estimate, and 95% upper (UCI) and lower (LCI) confidence intervals around the estimate.

### 2020 Sage-grouse Harvest by Strata

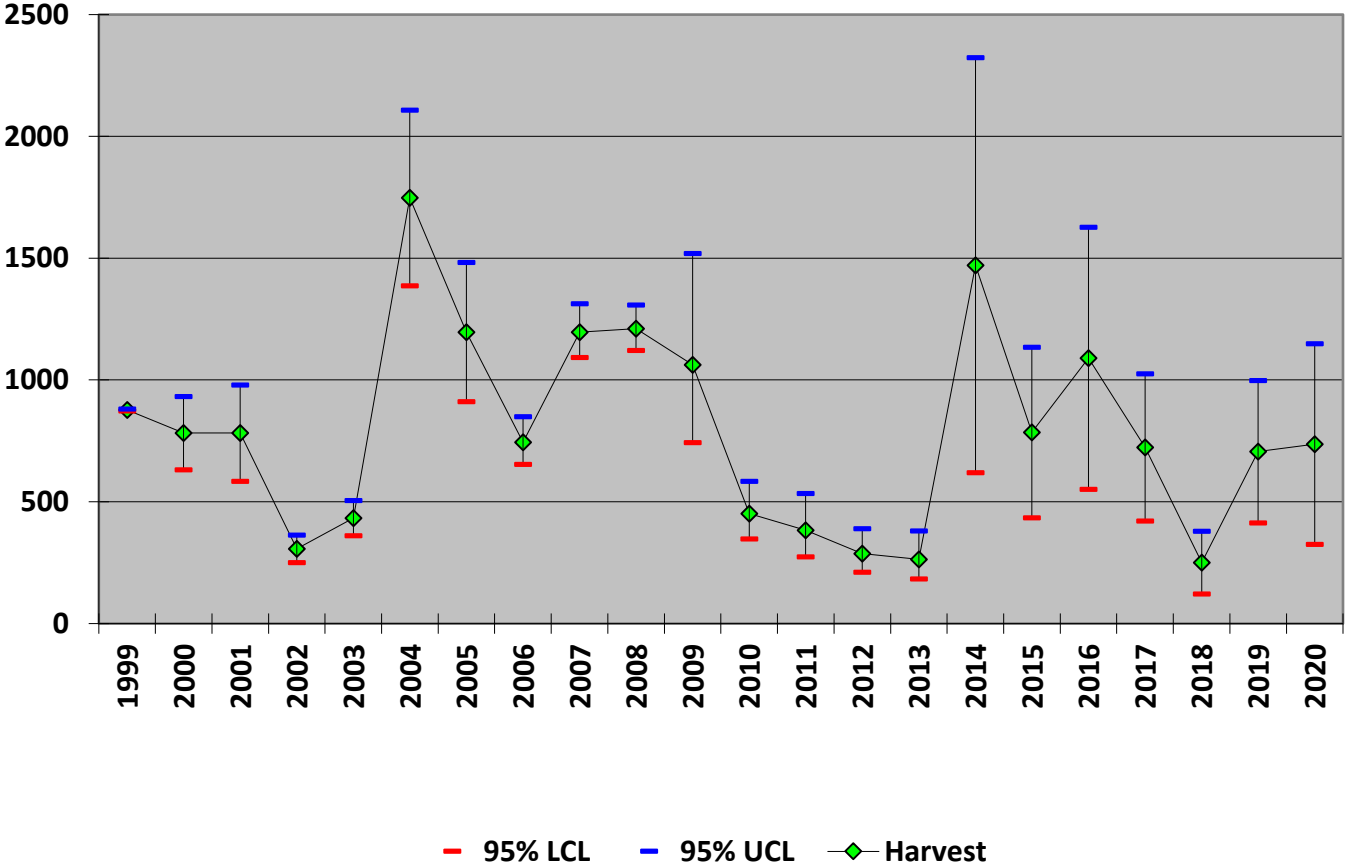
Strata	Hunters	SE(hunters)	LCI		UCI		Days		SE	Harvest	SE(harvest)	LCI		UCI	CV %
			Hunters	Hunters	Hunters	Hunters	Hunted	(Days Hunted)	Days			Days	Harvest	Harvest	
<b>(1) Not Likely</b>	144	54	70	293	287	112	137	600		41	29	12	143	71%	
<b>(2) Somewhat Likely</b>	327	80	204	524	797	217	472	1347		286	178	93	877	62%	
<b>(3) Very Likely</b>	248	42	179	344	629	131	420	942		323	103	176	593	32%	
<b>(4) Very Likely for &gt;3 years</b>	72	15	49	107	154	41	92	259		87	34	41	183	40%	
<b>Total</b>	791	106	583	999	1868	280	1318	2417		737	210	325	1149	29%	

### 2020 Sage-grouse Harvest by County

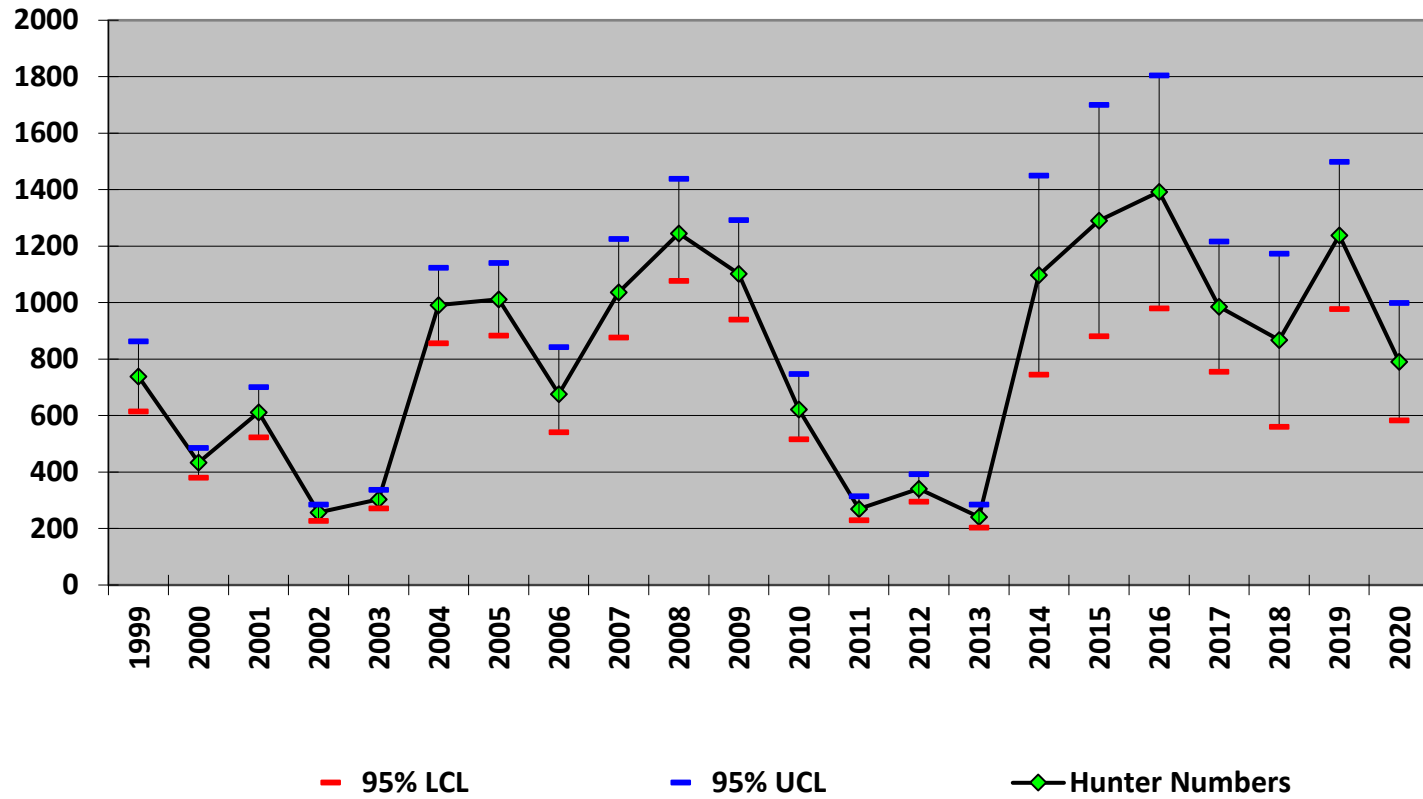
County	Hunters	SE(hunters)	LCI		UCI		Days		SE	Harvest	SE(harvest)	LCI		UCI
			Hunters	Hunters	Hunters	Hunters	Hunted	(Days Hunted)	Days			Days	Harvest	Harvest
<b>Moffat</b>	852	180	565	1284	706	168	446	1120		484	195	227	1035	
<b>Jackson</b>	179	45	110	291	329	122	163	666		129	51	61	273	
<b>Summit</b>	701	244	362	1360	280	102	140	561		62	40	20	196	
<b>Grand</b>	238	94	112	503	300	116	144	624		41	41	8	209	
<b>Other</b>	664	279	301	1462	180	78	80	407		21	21	4	105	
<b>Rio Blanco</b>	134	90	40	445	72	46	23	229		0	0	NA	NA	
<b>Total</b>	791	106	583	999	1868	280	1318	2417		737	210	325	1149	

\*Hunters could provide up to 3 counties when asked “where did you harvest sage grouse?”

### Sage-grouse Harvest Estimates, Colorado (1999-2020)



### Sage grouse Hunter Numbers Colorado (1999-2020)



### Sage-grouse Hunters and Harvest Colorado (1999-2020)

