

2019 Sage-grouse Harvest Report

The 2019 Sage-grouse report provides information on the estimated harvest of Sage-grouse. A post-season harvest survey was conducted by phone and email. A stratified random sample of 3,500 potential Sage-grouse hunters was drawn from among Harvest Information Program (HIP) participants. The sample was stratified as follows:

- 1 = Not Likely to hunt
- 2 = Somewhat Likely to hunt
- 3 = Very Likely to hunt
- 4 = Very Likely to hunt for 3 or more years

Harvest Data Summary

The survey contacted 1,511 (43.1% response rate) hunters in 2019. Approximately 6.4% (98) reported hunting Sage-grouse during the season. Thirty (30) hunters (36.9%) reported that they successfully harvested Sage-grouse. **Statewide harvest was estimated at 706 \pm 292 (414 – 998).**

Comparison with 2018 survey results:

Comparing the figures for the Sage-grouse season for both years, the estimated harvest in 2019 is higher than 2018 when an estimated 251 \pm 129 (121 - 380) birds were harvested. Hunter numbers increased in 2019 at **1,238 \pm 260 (978 – 1499)** from 867 \pm 305 (561 – 1174) in 2018. Total days hunted increased in 2019, when **3,567 \pm 1,070 (2,496 – 4,638)** hunted compared to 2,225 \pm 1,011 (516 – 3,236) in 2018.

Hunter Statistics and Harvest Estimates by Strata and County

The following summary tables provide estimates of hunter numbers, days in the field and Sage-grouse harvest statewide and by county. Estimates are followed by the standard error of the estimate, and 95% upper (UCI) and lower (LCI) confidence intervals around the estimate.

2019 Sage-grouse Harvest by Strata

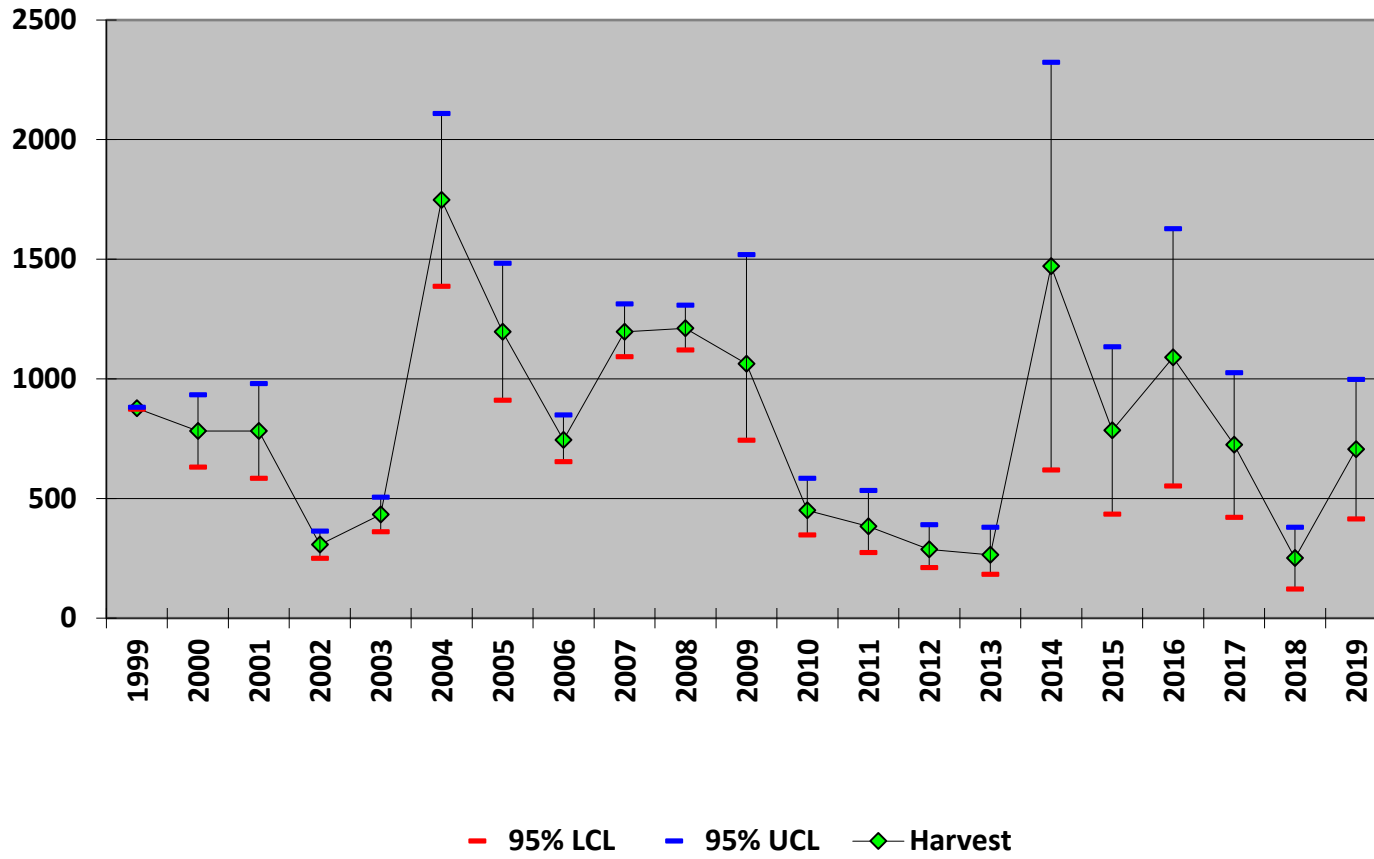
Strata	Hunters	SE(hunters)	LCI Hunters	UCI Hunters	Days Hunted	SE (Days Hunted)	LCI Days	UCI Days	Harvest	SE(harvest)	LCI Harvest	UCI Harvest
(1) Not Likely	259	74	149	449	734	295	344	1566	129	68	49	341
(2) Somewhat Likely	378	92	237	605	1388	406	792	2433	210	98	88	502
(3) Very Likely	500	59	398	629	1231	213	879	1723	202	75	100	409
(4) Very Likely for >3 years	101	16	74	137	214	40	149	309	164	48	93	288
Total	1238	133	978	1499	3567	546	2496	4638	706	149	414	998

2019 Sage-grouse Harvest by County

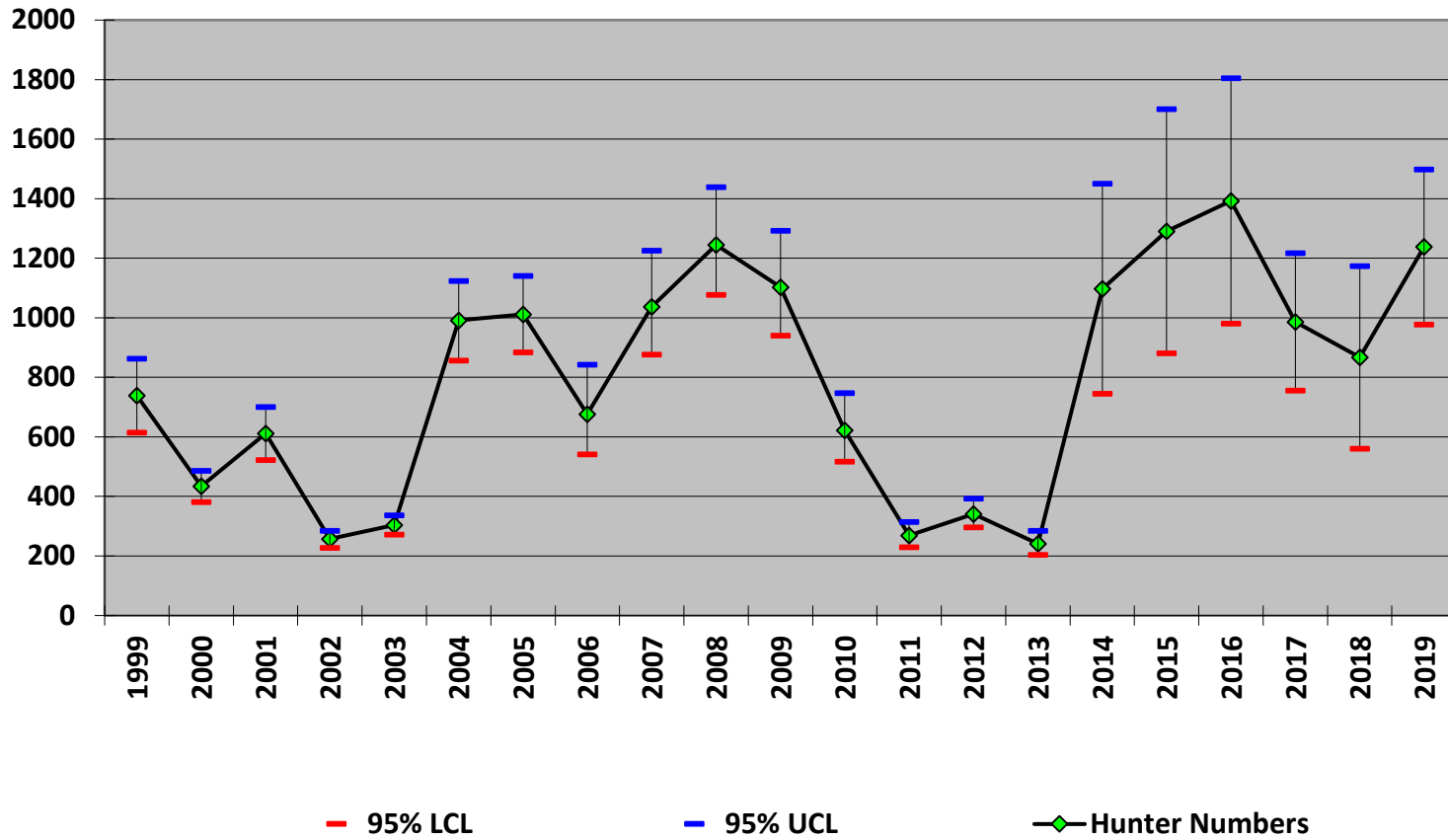
County	Hunters	SE(hunters)	LCI Hunters	UCI Hunters	Days Hunted	SE (Days Hunted)	LCI Days	UCI Days	Harvest	SE(harvest)	LCI Harvest	UCI Harvest
Moffat	893	193	588	1356	833	252	467	1487	245	88	123	486
Jackson	353	67	245	509	718	198	422	1222	192	71	96	386
Summit	973	288	552	1716	437	181	201	952	137	68	55	344
Grand	317	80	195	515	426	138	230	791	69	37	25	186
Rio Blanco	372	162	164	844	454	228	179	1152	43	43	8	221
Other	1192	373	656	2169	698	264	340	1431	19	19	4	98
Total	1238	133	978	1499	3567	546	2496	4638	706	149	414	998

*Hunters could provide up to 3 counties when asked "where did you harvest sage grouse?"

Sage-grouse Harvest Estimates, Colorado (1999-2019)



Sage grouse Hunter Numbers Colorado (1999-2019)



Sage-grouse Hunters and Harvest Colorado (1999-2019)

