

2018 Sage-grouse Harvest Report

The 2018 Sage-grouse report provides information on the estimated harvest of Sage-grouse. A post-season harvest survey was conducted by phone and email. A stratified random sample of 3,500 potential Sage-grouse hunters was drawn from among Harvest Information Program (HIP) participants. The sample was stratified as follows:

- 1 = Not Likely to hunt
- 2 = Somewhat Likely to hunt
- 3 = Very Likely to hunt
- 4 = Very Likely to hunt for 3 or more years

Harvest Data Summary

The survey contacted 1,538 (43.9% response rate) hunters in 2018. Approximately 2.9% (46) reported hunting Sage-grouse during the season. Seventeen (17) hunters (36.9%) reported that they successfully harvested Sage-grouse. **Statewide harvest was estimated at 251 ± 129 (121 - 380).**

Comparison with 2017 survey results:

Comparing the figures for the Sage-grouse season for both years, the estimated harvest in 2018 is much lower than 2017 when an estimated 724 ± 301 (552 – 1,026) birds were harvested. Hunter numbers decreased in 2018 at 867 ± 305 (561 – 1174) from **986 ± 231 (756 – 1,217)** 2017. Total days hunted stayed similar in 2018, **2,225 ± 1,011 (516 – 3,236)** when compared to 2,235 ± 697 (1,536 – 2,934) in 2017.

Discussion

According to survey data, Sage-grouse harvest decreased by approximately 65% between 2018 and 2017. Total hunter numbers decreased by 12%. Days hunted was in 2018 was similar to 2017.

As an additional measure, CPW calculated an estimate of average birds harvested per hunter from 1999-2015. In 2016, hunters averaged 0.29 birds per hunter, suggesting that average hunting success was much lower than the long term average of 1.1 birds per hunter.

Hunter Statistics and Harvest Estimates by Strata and County

The following summary tables provide estimates of hunter numbers, days in the field and Sage-grouse harvest statewide and by county. Estimates are followed by the standard error of the estimate, and 95% upper (UCI) and lower (LCI) confidence intervals around the estimate.

2018 Sage-grouse Harvest by Strata

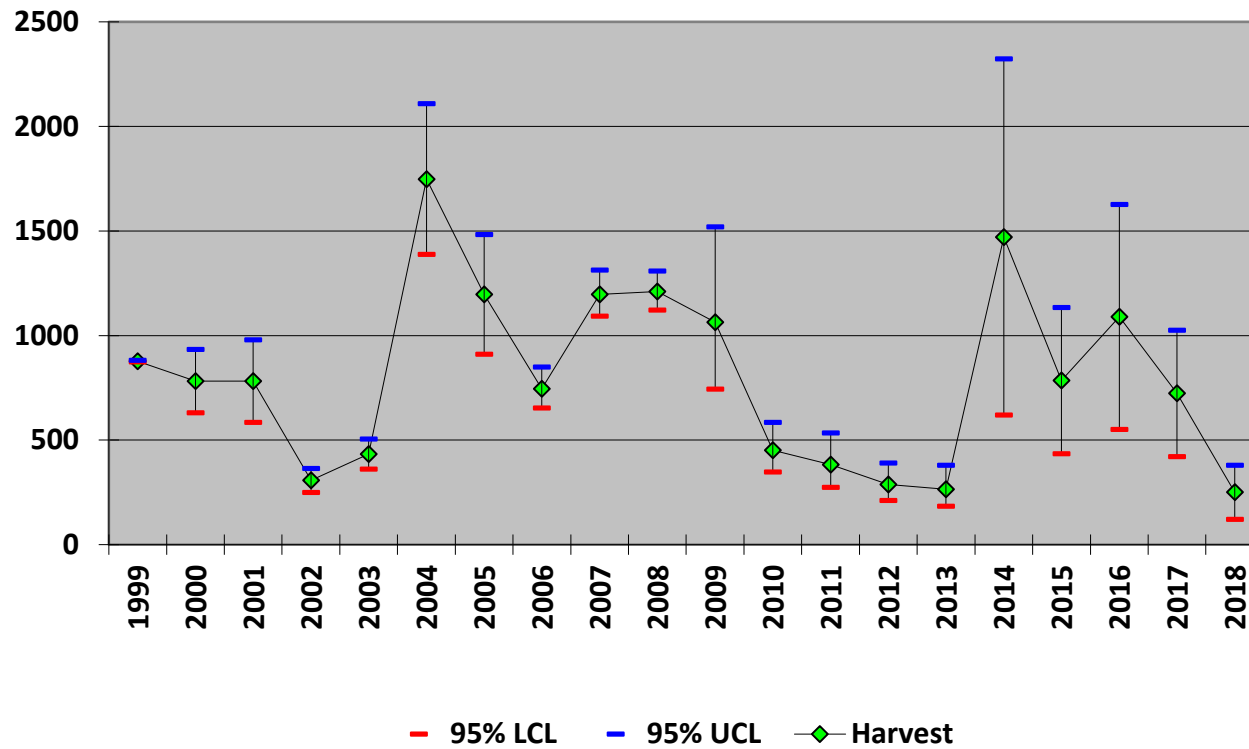
Strata	Hunters	SE(hunters)	LCI Hunters	UCI Hunters	Days Hunted	SE (Days Hunted)	LCI Days	UCI Days	Harvest	SE(harvest)	LCI Harvest	UCI Harvest
Not Likely	96	39	44	206	414	258	135	1271	48	36	13	176
Somewhat Likely	228	60	138	378	571	191	301	1082	65	40	22	197
Very Likely	458	138	257	818	1088	403	539	2196	0	0	NA	NA
Very Likely for >3 years	85	13	63	115	152	30	103	223	138	39	80	236
Total	867	156	561	1174	2225	516	1214	3236	251	66	121	380

2018 Sage-grouse Harvest by County

County	Hunters	SE(hunters)	LCI Hunters	UCI Hunters	Days Hunted	SE (Days Hunted)	LCI Days	UCI Days	Harvest	SE(harvest)	LCI Harvest	UCI Harvest
Moffat	1191	353	675	2103	884	307	457	1712	141	51	71	281
Jackson	156	44	90	270	304	109	153	602	54	24	23	125
Grand	41	33	10	165	53	48	11	242	41	33	10	165
Summit	129	88	38	434	124	114	26	577	14	11	4	52
Rio Blanco	522	324	170	1598	354	252	101	1242	0	0	NA	NA
Other	881	496	315	2462	507	330	158	1626	0	0	NA	NA
Total	867	156	561	1174	2225	516	1214	3236	251	66	121	380

*Hunters could provide up to 3 counties when asked “where did you harvest sage grouse?”

**Sage-grouse Harvest Estimates,
Colorado (1999-2018)**



Sage-grouse Hunters and Harvest Colorado (1999-2018)

