

## 2017 Sage-grouse Harvest Report

The 2017 Sage-grouse report provides information on the estimated harvest of Sage-grouse. A post-season harvest survey was conducted by phone and email. A stratified random sample of 3,500 potential Sage-grouse hunters was drawn from among Harvest Information Program (HIP) participants. The sample was stratified as follows:

- 1 = Not Likely to hunt
- 2 = Somewhat Likely to hunt
- 3 = Very Likely to hunt
- 4 = Very Likely to hunt for 3 or more years

### **Harvest Data Summary**

The survey contacted 1,521 (43.4% response rate) hunters in 2017. Approximately 5.3% (81) reported hunting Sage-grouse during the season. Thirty-two (32) hunters (39.5%) reported that they successfully harvested Sage-grouse. **Statewide harvest was estimated at 724 ± 302 (421 – 1,026).**

### **Comparison with 2016 survey results:**

Comparing the figures for the Sage-grouse season for both years, the estimated harvest in 2017 is lower than 2016 when an estimated 1,089 ± 537 (552 – 1,627) birds were harvested. Hunter numbers decreased in 2017 at **986 ± 231 (756 – 1,217)** from 1,393 ± 412 (980 – 1,805) in 2016. Total days hunted decreased in 2017 to **2,235 ± 697 (1,536 – 2,934)** when compared to 3,854 ± 1,396 (2,459 – 5,249) in 2016.

### **Discussion**

According to survey data, Sage-grouse harvest decreased by approximately 33% between 2017 and 2016. Total hunter numbers decreased by 29% while days hunted decreased 42% between years.

Strata	2015 Hunter Estimate	2016 Hunter Estimate	2017 Hunter Estimate	2015 Harvest Estimate	2016 Harvest Estimate	2017 Harvest Estimate
<b>(1) Not Likely</b>	396	331	230	66	166	104
<b>(2) Somewhat Likely</b>	468	584	364	324	428	304
<b>(3) Very Likely</b>	343	373	296	234	320	197
<b>(4) Very Likely for &gt;3 years</b>	84	104	96	161	175	118

As an additional measure, CPW calculated an estimate of average birds harvested per hunter from 1999-2015. In 2016, hunters averaged 0.73 birds per hunter, suggesting that average hunting success was lower than the long term average of 1.1 birds per hunter.

### **Hunter Statistics and Harvest Estimates by Strata and County**

The following summary tables provide estimates of hunter numbers, days in the field and Sage-grouse harvest statewide and by county. Estimates are followed by the standard error of the estimate, and 95% upper (UCI) and lower (LCI) confidence intervals around the estimate.

### 2017 Sage-grouse Harvest by Strata

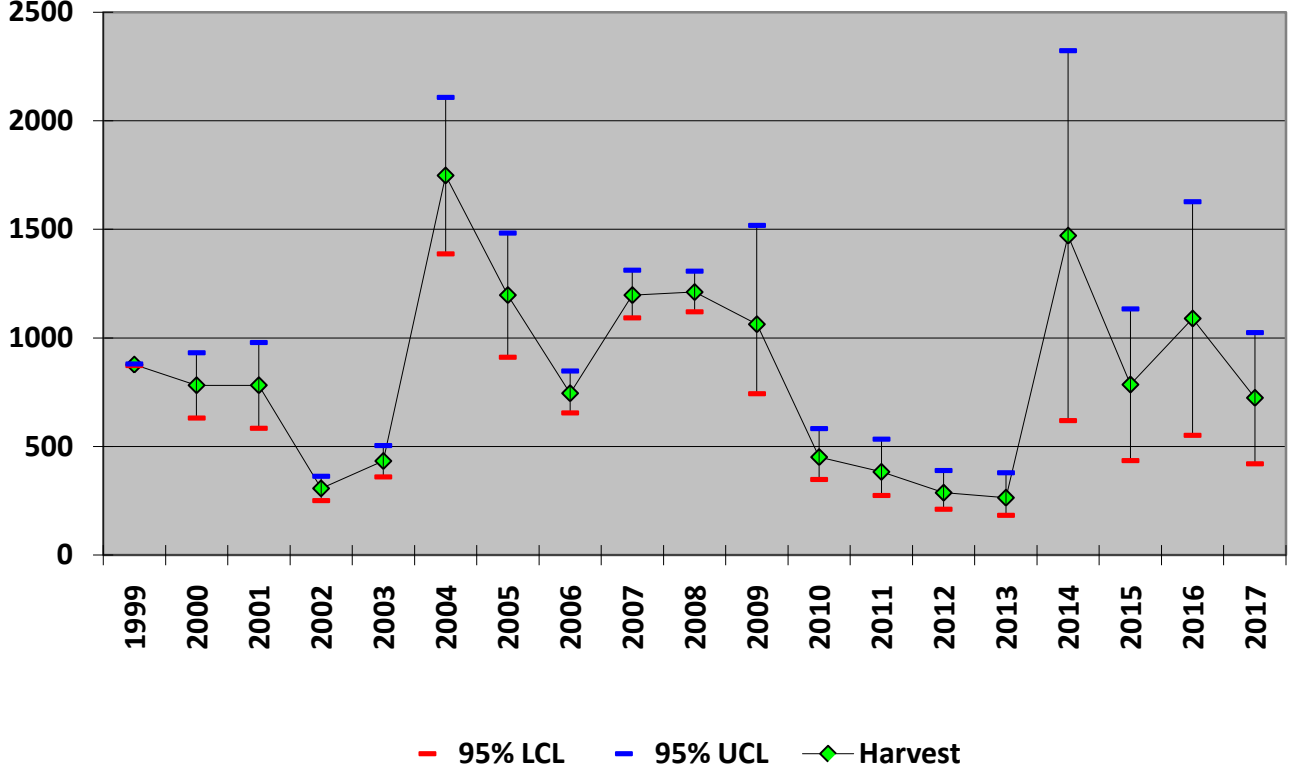
Strata	Hunters	SE(hunters)	LCI Hunters	UCI Hunters	Days Hunted	SE (Days Hunted)	LCI Days	UCI Days	Harvest	SE(harvest)	LCI Harvest	UCI Harvest
<b>(1) Not Likely</b>	230	69	129	408	752	277	373	1514	104	69	32	341
<b>(2) Somewhat Likely</b>	364	84	234	568	668	188	389	1146	304	115	148	623
<b>(3) Very Likely</b>	296	43	223	393	660	118	466	935	197	62	108	361
<b>(4) Very Likely for &gt;3 years</b>	96	16	69	133	155	31	105	230	118	44	59	239
<b>Total</b>	<b>986</b>	<b>118</b>	<b>756</b>	<b>1217</b>	<b>2235</b>	<b>356</b>	<b>1536</b>	<b>2934</b>	<b>724</b>	<b>154</b>	<b>421</b>	<b>1026</b>

### 2017 Sage-grouse Harvest by County

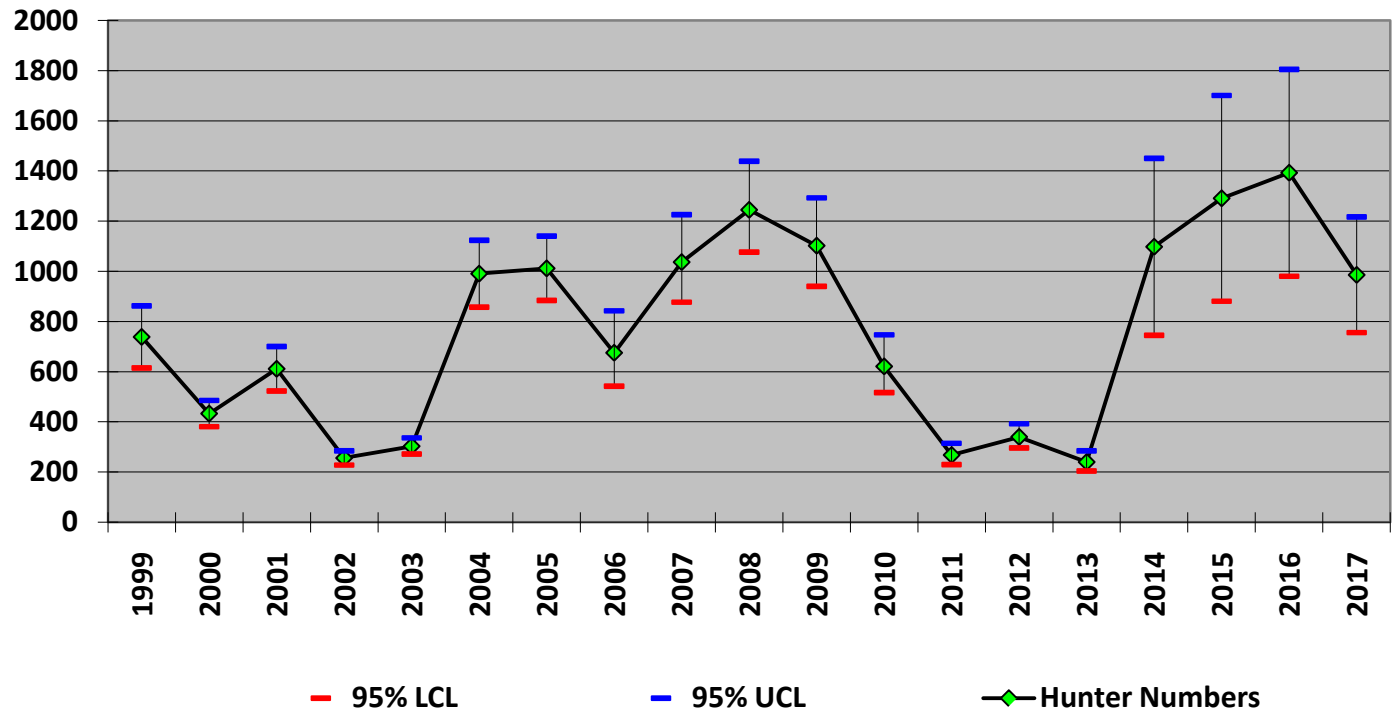
County	Hunters	SE(hunters)	LCI Hunters	UCI Hunters	Days Hunted	SE (Days Hunted)	LCI Days	UCI Days	Harvest	SE(harvest)	LCI Harvest	UCI Harvest
Jackson	286	62	188	435	465	111	294	736	190	80	86	418
Moffat	613	141	393	956	448	119	269	748	185	65	94	363
Grand	370	104	216	634	320	105	172	598	142	68	58	346
Summit	588	235	277	1250	159	69	70	358	89	64	25	318
Other	1309	369	761	2252	661	242	330	1323	70	63	16	315
Rio Blanco	225	124	82	617	182	148	45	735	49	30	16	148
<b>Total</b>	<b>986</b>	<b>118</b>	<b>756</b>	<b>1217</b>	<b>2235</b>	<b>356</b>	<b>1536</b>	<b>2934</b>	<b>724</b>	<b>154</b>	<b>421</b>	<b>1026</b>

\*Hunters could provide up to 3 counties when asked “where did you harvest sage grouse?”

### Sage-grouse Harvest Estimates, Colorado (1999-2017)



### Sage grouse Hunter Numbers Colorado (1999-2017)



### Sage-grouse Hunters and Harvest Colorado (1999-2017)

