

2020 Sharp-tailed grouse Harvest Report

The 2020 sharp-tailed grouse report provides information on the estimated harvest of mountain sharp-tailed grouse. A stratified random sample of 3,500 sharp-tailed grouse hunters was drawn from among Harvest Information Program (HIP) participants. The sample was stratified as follows:

- 1 = Not likely to hunt
- 2 = Somewhat likely to hunt
- 3 = Very likely to hunt
- 4 = Very likely to hunt \geq 3 years

The post-season survey, conducted by telephone and email, contacted 1,506 (43.0% response rate) hunters. In total, 34 respondents, or 2.2%, reported they had hunted sharp-tailed grouse in 2019 and 17 (11%) reported harvesting sharp-tailed grouse. Statewide harvest was estimated at.

Comparison with 2018 survey results:

Harvest was higher than 2019 when an estimated **219 \pm 147 (73 – 366)** grouse were harvested. Hunter numbers in 20, estimated at **487 \pm 201 (286 – 688)** were similar to 2019 when 449 \pm 188 (260 – 637) reported hunting. Days hunted were similar, **1,579 \pm 733 (845 – 2313)** in 2020, to **1,601 \pm 776 (824 – 2377)** in 2019.

Hunter Statistics and Harvest Estimates by Strata and County

The following summary tables provide estimates of hunter numbers, days in the field and sharp-tailed grouse harvest statewide and by county. Estimates are followed by the standard error of the estimate, and 95% upper (UCI) and lower (LCI) confidence intervals around the estimate. Summary tables provide estimates of hunter numbers, days in the field and sharp-tailed grouse harvest state and by county. Estimates are followed by the standard error of the estimate, and 95% upper (UCI) and lower (LCI) confidence intervals around the estimate.

**2020 Sharp-tailed grouse harvest,
by strata**

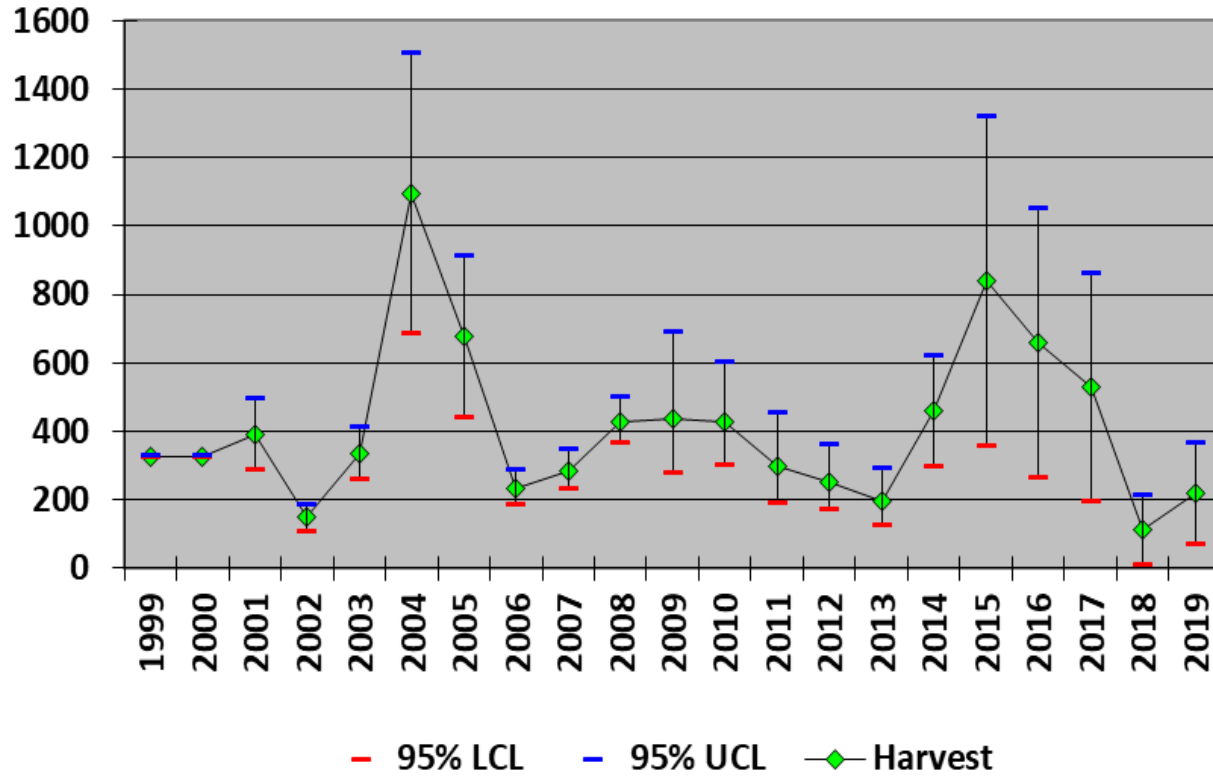
Strata	Hunters	SE (Hunters)	LCL (Hunters)	UCL (Hunters)	Days Hunted	SE (Days Hunted)	LCL (Days Hunted)	UCL (Days Hunted)	Harvest	SE (Harvest)	LCL (Harvest)	UCL (Harvest)	
Not Likely	96	43	42	222	250	117	105	597	19	19	4	98	100%
Somewhat Likely	238	83	122	461	654	245	321	1332	0	0	Na	Na	Na
Very Likely	100	42	46	220	488	253	187	1270	57	40	Na	Na	Na
Very Likely for >3 years	53	9	37	74	188	48	114	308	188	38	127	276	20%
Total	487	103	286	688	1579	374	845	2313	264	58	150	378	22%

**2020 Sharp-tailed grouse harvest,
by county**

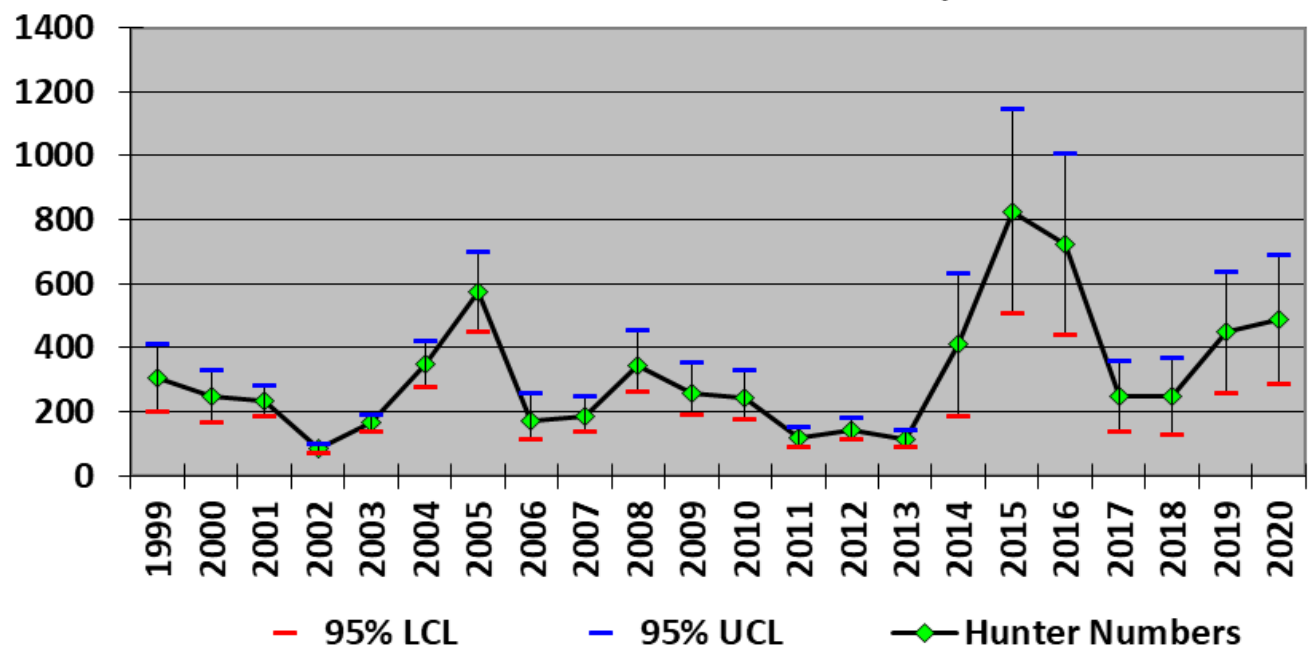
County	Hunters	SE (Hunters)	LCL (Hunters)	UCL (Hunters)	Days Hunted	SE (Days Hunted)	LCL (Days Hunted)	UCL (Days Hunted)	Harvest	SE (Harvest)	LCL (Harvest)	UCL (Harvest)
Moffat	137	56	63	295	438	205	183	1048	59	34	21	167
Rio Blanco	211	94	92	486	367	170	155	869	19	19	4	98
Routt	822	227	484	1398	775	229	440	1366	186	48	113	307
Unknown	0	0	NA	NA	0	0	NA	NA	0	0	NA	NA
Total	487	103	286	688	1579	374	845	2313	264	58	150	378

*Hunters could provide up to 3 counties when asked “where did you harvest sharp-tailed grouse?”

Sharp-tailed grouse Harvest Estimates, Colorado (1999-2020)



Sharp-tailed grouse Hunter Numbers Colorado (1999-2020)



Sharp-tailed grouse Hunters and Harvest Colorado (1999-2020)

