



Colorado **Division of Water Resources**



2004 Annual Report Water Division VI

Yampa, White & N. Platte River Basins

2004

Robert M. Plaska
Division Engineer

TABLE OF CONTENTS

Water Year 2004

Introduction.....	1
Basin Hydrology.....	1
Water Administration.....	5
Compacts and Inter-State Agreements	7
Dam Safety.....	8
Hydrographic Program.....	10
Ground Water and Well Permitting	11
Water Records and Information	11
Water Court Cases.....	12
Involvement in Water User Community.....	13
Issues and Achievements.....	14
Workload.....	16
Personnel.....	17
Training.....	18

Water Year 2005

Key Objectives.....	19
---------------------	----

Water Administration Data Summaries

Reservoir Storage Summaries	20
Water Diversions Summary.....	37
Water Diversions to Various Uses.....	38
Transmountain Diversions.....	39
River Calls	40
Water Court Activities	41
Organizational Chart	42
Office Administration and Workload Measures	43

Introduction

This report summarizes the activities of the Division 6 office of the Colorado Division of Water Resources. It presents an overview of the administration activities that took place during calendar year 2004 and presents summary data for the water year. Please direct any questions regarding the information in this report to the Division 6 office in Steamboat Springs.

Water Year 2004

Basin Hydrology

Water year 2004 saw a return to the drought conditions that we have been experiencing for the last seven years. Spring runoff was significantly below average throughout the Division, but summer precipitation helped ease the water supply problems in many areas.

The water year began on a very favorable note with early season snowfall accounting for an above average snowpack throughout the Division. However, as the winter progressed the precipitation amounts decreased, as did the snowpack. Above-average temperatures coupled with below-normal precipitation caused a rapid decline in the snowpack from March to May. This trend can be seen in the table below that lists the snowpack for the various basins in the Division on the first day of each month. By the beginning of May, the snowpack, as a percent of average, was well below normal and not much higher than that of 2002.

SNOWPACK AS PERCENT OF AVERAGE
Water Year 2004

<u>Drainage</u>	<u>Jan</u>	<u>Feb</u>	<u>Mar</u>	<u>Apr</u>	<u>May</u>	<u>May '02</u>
North Platte River	98	82	81	69	62	44
Yampa River	110	89	88	68	48	32
Little Snake River	124	100	97	75	59	50
White River	109	97	93	69	62	37

Source: Natural Resource Conservation Service monthly Colorado Basin Outlook Reports

As one would expect, the runoff forecasts, updated monthly during the winter by the Natural Resources Conservation Service (NRCS), followed the declining snowpack, decreasing slightly in the January-March time frame, then decreasing rapidly in April and May. The table below lists runoff forecasts for selected sites as reported by the NRCS for the indicated forecast dates, and the percent of average for these forecast. Also shown in this table is the actual runoff as

reported by the USGS for the forecasted time period, as well as the long-term average. All values are in acre-feet.

Runoff Forecast in 1000's of Acre-Feet

Station Name	1-Jan		1-Mar		1-May		Actual		30-Year Avg
	Runoff	% Avg	Runoff	% Avg	Runoff	% Avg	Runoff	% Avg	Runoff
North Platte nr Northgate	245	91	215	80	74	32	103	45	230
White River nr Meeker	250	86	225	78	160	55	167	58	290
Little Snake River nr Lily	400	110	355	97	205	56	130	36	365
Yampa River nr Maybell	900	91	775	78	490	50	548	55	990

As can be seen from this table, the actual runoff experienced in 2004 was slightly higher than the May 1 forecast for most basins. The runoff amounts for 2004 were well below average in all the basins, and significantly lower than in 2003, but still greater than those experienced in 2002.

Precipitation amounts varied widely across the Division in 2004, but the general trend was for average precipitation early in the year followed by a warm dry spring and a wet late summer and fall. Some areas, such as North Park, saw substantial amounts of summer rains while other areas, such as the White River Basin, were dry all summer long. The tables below present both water year and calendar year precipitation totals for selected sites in the Division. Since the Steamboat site did not have readings recorded for the summer, it is not presented this year. In its place, the basin-wide percentages measured at the various SNOTEL sites in the Division are presented for the 2004 water year. These numbers show that the combined precipitation measured at the SNOTEL sites was about 90% of average.

Monthly Precipitation Data for Selected Sites Water Year 2004 (Inches)

Site	Oct	Nov	Dec	Jan	Feb	Mar	Apr	May	Jun	Jul	Aug	Sep	Total	% of Avg
Meeker	0.33	1.99	1.83	0.55	0.76	0.45	2.44	1.35	0.66	0.72	0.91	2.26	15.13	92
Walden	0.64	1.16	0.57	0.32	0.77	0.24	0.36	0.39	2.44	2.03	2.24	3.38	14.18	130

**Monthly Precipitation Data for Selected Sites
Calendar Year 2004
(Inches)**

<u>Site</u>	<u>Jan</u>	<u>Feb</u>	<u>Mar</u>	<u>Apr</u>	<u>May</u>	<u>Jun</u>	<u>Jul</u>	<u>Aug</u>	<u>Sep</u>	<u>Oct</u>	<u>Nov</u>	<u>Dec</u>	<u>Total</u>	<u>% of Avg</u>
Meeker	0.55	0.76	0.45	2.44	1.35	0.66	0.72	0.91	2.26	1.30	1.84	0.38	13.62	83
Walden	0.32	0.77	0.24	0.36	0.39	2.44	2.03	2.24	3.38	0.67	0.83	0.67	14.34	131

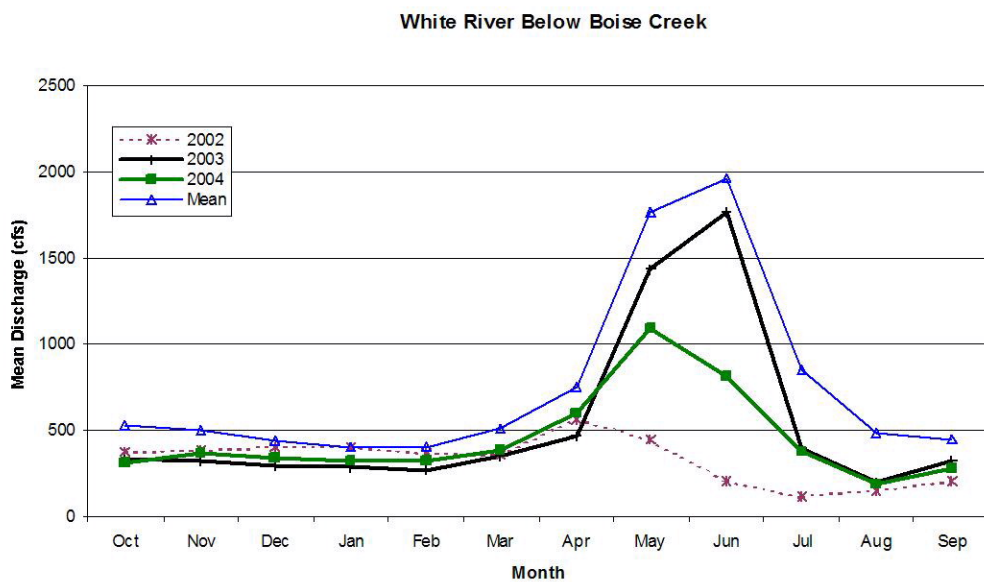
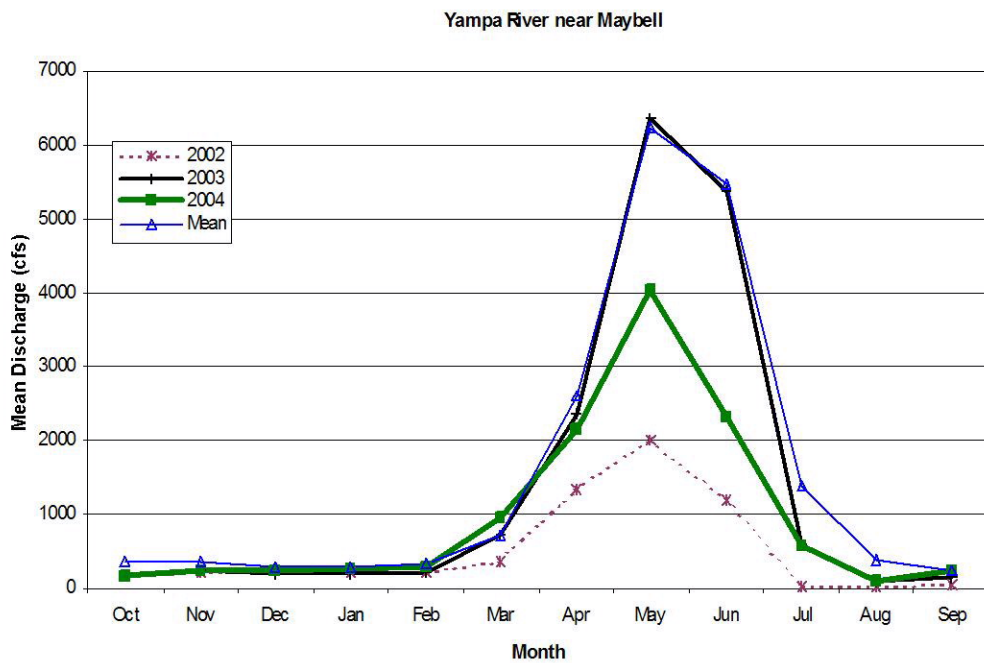
**Basin-Wide Precipitation Data From NRCS SNOTEL Sites
Water Year 2004
(Percent of Average)**

<u>Oct</u>	<u>Nov</u>	<u>Dec</u>	<u>Jan</u>	<u>Feb</u>	<u>Mar</u>	<u>Apr</u>	<u>May</u>	<u>Jun</u>	<u>Jul</u>	<u>Aug</u>	<u>Sep</u>	<u>% of Avg</u>
35	167	81	56	77	58	97	53	133	109	103	195	90

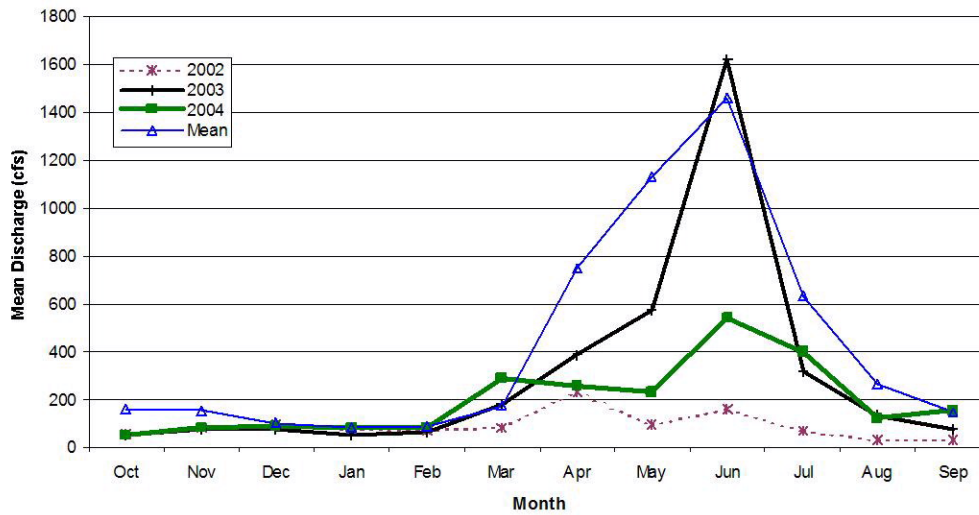
Stream flows in 2004 were well below average even with the summer rains. The warm spring weather caused much of the snowpack to melt early resulting in the peak runoff flows occurring early on all the major rivers and tributaries. The annual total flows reported at selected gages on the main rivers in the Division for water year 2004 are presented in the table below. As can be seen by these numbers, 2004 was a very dry year.

<u>Station Name</u>	<u>Total Flow (AF)</u>	<u>Average (AF)</u>	<u>% of Average</u>
White River below Boise Creek	300,000	449,200	67
Little Snake River at Lily	175,600	409,600	43
Yampa River near Maybell	669,600	1,121,000	62
North Platte near Northgate	144,750	310,000	47

The following diagrams depict the hydrographs of various gaging stations in the Division. The plots show the recorded mean monthly flows for the past three years as well as the historic monthly means.



North Platte River near Northgate



Water Administration

Water administration began early in many parts of the Division as warm spring temperatures caused many rivers and streams to peak earlier than normal. With much of the snowpack gone by the middle of April, irrigators sought to get as much water on their fields as early as possible. In many areas, the early irrigation start meant early calls for administration. A list of the calls that occurred in the various Water Districts is on Page 40.

Yampa River Drainage

The Yampa River drainage encompasses Water Districts 44, 54, 55, 56, 57 and 58. Most administration occurred in the headwaters of the Yampa and on some of the smaller tributaries. The major streams that went under administration included Bear River, the Hunt Creek drainage, Fortification Creek, and the Little Snake River. In most cases, the calls for administration were placed in early to mid-May and lasted until the haying season began. There were also late season calls in August and September that continued through the remainder of the irrigation season.

Calls on the Little Snake River are administered under the provisions of the Upper Colorado River Compact. A call was placed on the Little Snake River on August 9th. This year is the fourth out of five that there has been a call on this river. This call was administered with the cooperation of the Wyoming Superintendent for District 1.

In mid-May our office organized a meeting with the owners of the three major reservoirs on the Yampa drainage to discuss the possibility of reservoir releases in the summer of 2004. The intent of the meeting was to provide a forum to discuss the potential runoff for the season, and to develop contingency plans for delivering reservoir releases. One plan discussed was to exchange pools of water in the various reservoirs so that deliveries would be made from the closest reservoir, thus minimizing transportation losses. While the river flows in mid-summer were very low, there was no need to implement this plan, and the reservoir releases that were made came from their decreed places of storage.

In early August, the City of Steamboat Springs in cooperation with the Colorado Division of Wildlife implemented a voluntary closure of the Yampa River to all water activities within the city limits. This year marked the second time in the past three years that the city has instituted a voluntary closure. The closure remained in effect until early September when river flows and temperatures returned to more normal levels.

White River Drainage

Administration in Water District 43 was confined to the Piceance Creek drainage. This area has not seen an average runoff in over seven years. Administration on Piceance Creek started on March 23 and lasted the entire irrigation season. Besides the historic irrigation use on this drainage, major energy exploration has been taking place on both Piceance Creek and Yellow Creek. Many of the energy companies were required to truck water from the White River or from the town of Meeker to meet their needs.

There was sufficient water on the main stem of the White River and on the major tributaries upstream of Meeker to satisfy most of the needs of the users throughout the year. However, as the runoff declined, certain sections of the river had extremely low flows due to irrigation diversions. This situation occurred mainly in the stretch of the river upstream of Meeker immediately below several large ditches. Our office received several calls from citizens concerned about the low flows and the impact on the fisheries in the area. Unlike 2002, when the Division of Wildlife released water from Big Beaver Reservoir to relieve a similar situation, there were no such releases this year. The low-flow situation persisted until natural flows increased in early fall.

North Platte Drainage

Administration in the North Platte drainage occurred on the Illinois and Michigan River systems, and on several tributaries to the North Platte River. Walden Reservoir Company called for their

storage rights for Walden Reservoir on the Illinois River on March 17, and continued the call until May 5 when the call for direct flow rights began. There were several calls in late April and early May on the tributaries. Most calls were off by mid-July, because of the haying season or the increase in available water supply from rains in North Park.

Compacts and Inter-State Agreements

The following is a brief description of the inter-state compacts and agreements administered by Division 6. There were no major issues dealing with these agreements in 2004.

Upper Colorado River Compact

Under Article XIII (a) of the Upper Colorado River Compact, the State of Colorado will not cause the flow of the Yampa River at the Maybell gage to be depleted below an aggregate amount of 5,000,000 acre-feet for any period of ten consecutive years. For the period 1995 to 2004, the aggregate flow at the Maybell gage was 11,267,400 acre-feet. This volume represents an increase of 56,500 acre-feet over the 10-year total reported last year. While this increase was small, it broke a three-year string of steadily declining totals.

The Little Snake River is administered jointly with the State of Wyoming during times of shortage pursuant to Article XI of the Upper Colorado River Compact. As discussed earlier, Colorado users placed a call on the Little Snake River on August 9. The call lasted until September 15.

Our office continues to work with the State of Wyoming on updating the combined administration list for the Little Snake River. We hope to have a revised list available in 2005 to submit to the Upper Colorado River Compact Commission for approval.

North Platte River (Nebraska v. Wyoming, U.S. Supreme Court Decree)

Under the North Platte decree, Colorado is limited to a total of 145,000 acres of irrigation in the North Platte drainage, storage of no more than 17,000 acre-feet per year for irrigation purposes, and no more than 60,000 acre-feet of transmountain diversions from the basin in any period of ten consecutive years.

In water year 2004, a total of 87,466 acres were reported irrigated and 9,075 acre-feet were stored for irrigation use. The amount of irrigated acreage was down substantially from 2003, reflecting the water shortage experienced on the North Platte system this year. Transmountain

diversions out of the basin totaled 2855 acre-feet, also down significantly from 2003. The ten-year total of transmountain diversions out of the basin was 43,348 acre-feet. None of the limitations of the Supreme Court Decree was exceeded in 2004.

Division representatives attended both of the scheduled meetings of the North Platte Decree Committee in 2004.

Pot Creek

Pot Creek is a small tributary to the Green River. This creek's headwaters are in Utah, and it enters the Green River in Colorado. Water in Pot Creek is apportioned between the users of the two states under a Memorandum of Understanding. During 2004, no water was available for direct flow users in Colorado. At the annual water users meeting, the Water Commissioner reported that 413.5 acre-feet was stored prior to May 1, the start of the direct flow irrigation season. A determination was made that there was insufficient water available to satisfy downstream Colorado storage rights.

The States of Utah and Colorado continued their discussions in 2004 to update the existing Memorandum of Understanding (MOU) dealing with the administration of Pot Creek. There were four meetings held to review and update the MOU and to develop an Operations Manual to use in administering the water rights on Pot Creek. In December 2004, there was a teleconference between the two States to finalize the documents and final drafts were submitted to the respective State Engineers for their review. There will be discussions about these documents with the water users at the next annual meeting of the Pot Creek Distribution System in early 2005.

Dam Safety

The Dam Safety Branch of the Division of Water Resources is responsible for the safety of dams in Colorado while working to protect the loss of water supplies due to the failure of a dam. The two primary functions of the Dam Safety Branch are the review of designs for the construction, modification, or repair of a dam and periodic safety inspections for existing dams to insure their integrity. Our Dam Safety Engineer completed a full summer of inspections, including dams on the upper reaches of Division 5.

The Dam Safety Engineer attended two training courses during 2004 related to HEC-RAS computer modeling of reservoirs and stream channels. Also, with the expertise of Greg Hammer

from the Division 1 office, dam owner training seminars were given in Division 5 and Division 6. Fourteen owners/operators from Division 6 attended the training seminar held in Steamboat Springs. Only seven people attended the second seminar in Kremmling due to weather conditions.

In the design review and construction area, the following activities occurred during 2004: a final construction inspection and approval was completed for an alteration of the Bear Creek Dam to non-jurisdictional size; work continued with the owners of Nofstger and Wyman Dams toward reaching final approval of their outlet replacement and slip-lining projects, respectively; plus, submittals were made for spillway channel modifications at Poose Creek Dam, spillway repairs and tree removal at Yoast Dam, and spillway repairs at Larson #1 Dam. The reviews for these last three projects will be complete in the winter of 2005. Garrett Jackson, the Dam Safety Engineer in Grand Junction, will assist with the Larson #1 Dam review. The largest project in Division 6, scheduled to begin in the spring of 2005, is the construction of a 20-foot raise for the Elkhead Creek Dam near Craig. Mark Haynes of the Denver office is handling the design review for this project initiated in December 2004 with completion expected in early 2005. This project will add approximately 12,000 acre-feet of storage to the Yampa River drainage. Completion of this project is expected in approximately three years. Another proposal being formulated is to raise the spillway crest of Stagecoach Dam by five feet to further increase storage on the Yampa River.

Safety inspections of existing dams in the State take place at periodic intervals based on the hazard class of each dam. During 2004, the Dam Safety Engineer inspected eleven of thirteen high hazard dams, seven of 14 medium hazard dams, and 18 of over 100 low hazard dams in the Division. In addition, Federal Energy Regulatory Commission (FERC) engineers completed Potential Failure Mode Analyses (PFMA) on the two remaining high hazard, power generating dams in Division 6. The Division's Dam Safety Engineer and another State Dam Safety Engineer assisted with each of these analyses and inspections. In support of Division 5, our Dam Safety Engineer also inspected two high hazard dams, four medium hazard dams, and ten low hazard dams in Division 5, plus assisted in the FERC PFMA of one high hazard, power-generating dam along with the Dam Safety Engineer from Division 5.

There were several significant problems found at some of the low hazard dams in Division 6, with the continuation of one formal storage restriction. Of the 18 low hazard dams inspected, four were rated unsatisfactory mainly due to seepage issues, twelve were rated conditionally satisfactory mostly due to a general lack of maintenance and repair, and only two were rated

satisfactory. There was a similar breakdown in the ratings in 2003 with only one owner completing the repairs needed to bring his dam up to a satisfactory rating. A report from one owner indicated that his dam had failed due to a piping seep through a leak detected during 2003. The owner had left the outlet open while planning to do repairs but someone closed the gate without his knowledge, allowing the reservoir to fill and fail. Beaver ponds below the dam caught the sediment and no further downstream damage was noted.

There were no erosion control dams constructed during 2004, but applications for three livestock water tanks and 14 non-jurisdictional dams were processed. So far, the construction of numerous non-jurisdictional dams has not caused any significant water administration issues, but some areas around the Division are experiencing a proliferation of these small dams that could result in future problems. Any of these small dams that are on-channel are required to have adequate outlet pipes capable of passing inflow to help relieve any future issues. In addition to the applications, one complaint was received that a non-jurisdictional dam could be a hazard to residences below. An inspection of the dam only noted some minor maintenance issues, but no significant hazard.

Hydrographic Program

There are currently 39 active stream gage sites in the Yampa, White, and North Platte River basins. Of these stations, the USGS operates 27 and Division 6 operates 12. Of the twelve operated by the Division, eight are equipped with satellite monitoring. Of these eight, two transmit reservoir water surface elevations, four transmit stream flow gage heights, and two transmit both parameters. Of the remaining four, three are equipped with paper recorders, and one is equipped with a paper recorder as well as a data collection platform (DCP) to record gage heights.

In addition to maintaining the gage sites, many field trips were made with water commissioners to conduct flow measurements on ditches, reservoir releases, and streams. Water year 2004 hydrographic records will be published for four of the twelve sites: Walton Creek near Steamboat Springs, Yampa River above Lake Catamount, Michigan River near Meadow Creek Reservoir, and Illinois River near Rand.

In late September 2003, a new gage station was installed on the Yampa River just upstream of Lake Catamount at the Routt County Road Bridge 18C. This gage was in operation throughout water year 2004.

In October 2004, the gage on the Michigan River at Walden was relocated. At its original site, a suppressed weir existed which acted as a good control when not submerged. However, beaver activity and a diversion structure downstream had caused the weir to become frequently submerged. Because this problem persisted for several years, a decision was made to relocate the gage downstream approximately 250 meters to the upstream side of the State Highway 14 bridge.

The Pearl Lake gage station that records only reservoir storage elevations, experienced equipment problems throughout the record period. Even after replacing the AccuBar, installing a new nitrogen tank and checking the system for leaks, a solution has not been found for the persistent problem of significant fluctuations in readings.

Division 6 has two gage stations equipped with High Data Rate (HDR) equipment and has no other gages scheduled for upgrade to HDR at this time. There was no HDR equipment installed in 2004. Old Sutron 8210 DCPs are being replaced throughout the State with High Data Rate DCPs. Division 6 will acquire some of these old DCPs to install in those gages with only paper recorders and possibly other locations where deemed valuable. The Division will be receiving four of the DCPs, of which three should be installed by the end of Spring 2005.

On the horizon, the Division hydrographic program will work to re-establish the gage station on the Williams Fork River above its confluence with the Yampa River. In addition, operation of the Pot Creek at Stateline gage will intensify as a result of the revised Memorandum of Understanding regarding the administration of the interstate waters of Pot Creek, now in the signing process.

Groundwater and Well Permitting

The Division continues to assist the public with questions and concerns relating to the drilling of wells, and with completing well permit applications. The Division issued one hundred twenty seven exempt well permits in 2004, a decrease of approximately 21 percent over the same period last year. A considerable amount of time is spent educating realtors and water users about the statutes concerning the use of groundwater in Colorado.

Water Records and Information

Summaries of our diversion records for Water Year 2004 are on Pages 37 to 39 of this report. These numbers show total diversions for all uses were down by 64,207 acre-feet from 2003 and

up 300,543 acre-feet from 2002. For irrigation, diversions were down about 100,000 acre-feet and reported irrigated acreage dropped by 27,000 acres. The decrease in diversions and irrigated acreage closely followed the decrease in water supply for the year.

While compiling the summaries for diversions to storage, it was found that the storage in on-channel reservoirs has been omitted in our past annual reports. This was most likely caused by a misunderstanding of what data should be included in these summaries. This situation will be investigated and the proper information will be supplied in future reports.

Our water rights database is maintained using Hydrobase, and diversion records are entered exclusively into this program. Ownership, decreed water rights, structure information, and structure comments are updated on a regular basis and distributed to all of our commissioners annually, if not semi-annually. Well data is updated in Well Tools and dam information in the program DAM_app. Access to information through Hydrobase and Well View are our methods of responding to inquiries from the public. Continued efforts have been made to conform to the Hydrobase structure for coding of exchanges and plans of augmentation. The Division's goal is to have them properly entered into Hydrobase by the end of spring 2005.

Work has continued in the Division to locate the position of headgates on ditches and reservoirs using Garmin GPS units. Data gathering for active ditches has been completed for many of our districts. As time permits, the gathering of location information continues for less frequently visited structures. Location information is also being obtained during field inspections of new structures associated with applications for water rights. Denver has incorporated all of our GPS information collected through November 2004 into Hydrobase.

We continue to calculate an annual water budget for the various drainages within the Division using data from two lysimeter sites operated by our office.

Water Court Cases

Water Court activity declined significantly in the Division 6 Water Court in 2004 with total cases down about 50% from the previous year. The number of new cases filed in the Division 5 Water Court for water rights in the White River drainage was essentially the same as in 2003. There were 52 cases filed in Division 6 this year as compared to 101 in 2003, and 25 cases in Division 5 Water Court as compared to 24. The Division Engineer prepared 109 Summaries of

Consultation, 84 for the Division 6 Water Court and 25 for the Division 5 Water Court. A summary of the Court activities is on Page 41 of this report.

The 2004 Tabulation for both Division 5 and Division 6 were submitted to the Courts and published in the July resumes. Our office has received no official protests to these tabulations through the end of 2004.

In May, Judge Michael O'Hara presided over the first water court trial in Division 6 in many years. The case involved a new wastewater right on a tributary of the Yampa River outside of Steamboat Springs.

There were major changes in the Division 5 Water Court in 2004. In November, Judge Thomas W. Ossala retired and the Colorado Supreme Court named Judge Thomas P. Craven as the new Water Judge. Referee Daniel B. Petre was selected to fill the vacant position in the District Court and was appointed as the Alternate Water Judge. In December, the Court appointed Lain Leoniak as the new Water Referee, replacing Dan Petre.

Very good working relations continue between Division 6 and the Water Courts. Two meetings were held this year with Judge O'Hara and the Water Referee, Daniel Birch, to discuss procedures to help streamline the application process in Division 6. New applications continue to be reviewed prior to publication in the resume to assure that the applicants have supplied all pertinent information. Rulings of the Referee are also reviewed for accuracy before finalization. This review helps to reduce the number of rulings that need amending because of clerical errors. While these activities increase our workload, we feel that identifying missing information or errors before issuing the resumes or rulings actually saves time in the long run.

There were no major water cases filed in Division 6 this year. However, two cases are set for trial in late summer 2005, those being the Flattops Water Company case to divert water into Division 5, and the Steamboat Recreational In-Channel Diversion.

Involvement in the Water User Community

The Division staff continues to assist the public in preparing water court and well permit applications, to provide water right and diversion information, to assist water users with the proper selection and installation of water measuring devices, and to provide assistance to dam owners.

Division staff members continue to attend as many of the regularly scheduled meetings of the local Conservation and Conservancy Districts as possible. However, because of scheduling problems this past year, we were unable to attend any of the quarterly meetings of the Colorado River Water Conservation District. We did attend all of the Upper Yampa Water Conservancy District meetings.

The Division Engineer attended all of the meetings held in the Division dealing with the Statewide Water Supply Initiative (SWSI), sponsored by the Colorado Water Conservation Board. There were three meetings involving the Yampa/White/Green River basins and two for the North Platte basin. The Division Engineer was a member of the technical advisory group on both the Yampa/White/Green River and North Platte River SWSI Roundtables.

Our staff gave formal presentations this year at the Rio Blanco Stockgrowers Association annual meeting and the North Platte/White/Yampa Watershed Conservation Partnership Development meeting. The Division Engineer also participated in the two North Platte Decree Committee meetings held during the year. The spring meeting was in Scottsbluff, Nebraska and the fall meeting was in Torrington, Wyoming.

In February, Division staff, joined by Ken Knox from the Denver office, attended the annual Pot Creek users meeting in Vernal Utah.

Page 43 summarizes the activities of the offices and commissioners of the Division.

Issues and Achievements

After nearly a decade of effort on the part of the Yampa River Basin Partnership, the Colorado River Water Conservation District, Yampa valley residents and various State and Federal agencies; the Upper Colorado River Endangered Fish Recovery Program is on the verge of signing a cooperative agreement that implements the Yampa River Management Plan. The Plan forms the basis for allowing future development on the Yampa and Little Snake Rivers while supporting the efforts of the U. S. Fish and Wildlife Service in recovery of the four endangered fish species in the Upper Colorado River basin. Expectations are that the signing of the cooperative agreement will take place in early 2005. The acceptance of the management plan will clear the way for the enlargement of Elkhead Reservoir, identified as the preferred alternative for supplementing flow to the critical habitat on the Yampa River.

Anticipating the signing of the cooperative agreement, the Colorado River Water Conservation District began draining Elkhead Reservoir in December in preparation for construction activities, scheduled to begin in the Spring 2005. The engineering consultants for the District have been working closely with our Dam Safety Branch in obtaining approval of the construction designs. The reservoir should be down to the minimum pool, which will be maintained during construction, by early January 2005.

The case filed by Three Forks Ranch against the City of Cheyenne, the Wyoming State Engineer and the Wyoming Water Development Commission in U.S. District Court was finally settled this year. In this case, filed in the U. S. District Court in 2002, Three Forks Ranch raised several issues concerning the use of water by the City of Cheyenne and Wyoming's administration of water rights on the Little Snake River drainage. The U. S. Tenth District Court originally dismissed the allegations in 2003, but Three Forks Ranch appealed that decision. Oral arguments were heard before the Tenth District Court of Appeals on March 8, 2004. On April 22, 2004, the Court of Appeals issued their ruling confirming the decision of the lower Court on all issues.

The Hayden Project continues to be pursued on the main stem of the Yampa River near Hayden. The project originally envisioned consolidating three or four ditches into a common diversion point to eliminate a series of gravel diversion dams in the river. The U. S. Army Corps of Engineers was originally a major funding partner in this project. In the past year, the Corps has withdrawn their support of the project and the scope has been reduced to only include two ditches. As presently proposed, the Williams and Walker Ditches will divert at a common headgate on the Yampa River and water will be delivered to the users on the respective ditch systems through a combination of new and existing ditches. The water users, the Upper Yampa Water Conservancy District, the Natural Resource Conservation Service, and other sources to be determined, will provide funding. Construction on this project will very likely begin in 2005.

As previously mentioned, a draft of the Revised Pot Creek Memorandum of Understanding (MOU) has been completed and sent to the State Engineers of Utah and Colorado for review. In addition to the revised MOU, an operations manual was developed for use by the Water Commissioner on the system. This operation manual also outlines the responsibilities of the water users in maintaining their headgates and measuring devices. The signing of these documents is anticipated in early 2005.

The City of Steamboat Springs Recreational In-Channel Diversion (RICD) continues to loom on the horizon as an issue in the Division. On May 26, the Colorado Water Conservation Board held a hearing in Steamboat Springs regarding the RICD. The Board voted to recommend denial of the application by the Division 6 Water Court. The Water Court has set this case for trial in August 2005, hopefully after the Colorado Supreme Court renders a decision in the Gunnison River RICD appeal.

The enlargement of Elkhead Reservoir and subsequent release of water for the endangered species, plus the potential consequences on the entire upper Yampa River basin due to the City of Steamboat Springs RICD, will cause a new level of administration problems for the Yampa River. These new issues, combined with the continued growth near Steamboat Springs will require that our office evaluate how to deal with these issues given our present resources.

Some of the accomplishments of the past year for Division 6 include:

- Operated within our budget for 2004
- Participated in all the Statewide Water Supply Initiative meetings for the North Platte River and the White/Yampa/Green Rivers.
- Finalized negotiation with Utah on the Revised Pot Creek Memorandum of Understanding, and Operations Manual.
- Completed a full schedule of dam inspections.
- Successfully incorporated our new water commissioner into the Division 6 staff.
- Met all deadlines for the submittal of diversion and hydrographic records.
- Made major efforts to update our water court and structure databases to conform to the Hydrobase structure.

Workload

Filling the vacant water commissioner position in District 43 in April resulted in our Division having a full staff for the first time in several years. Having a full staff was especially helpful in District 43 where Bill Dunham had been covering the entire District for the last two years. The dry summer led to increased water administration throughout the Division resulting in additional field time for many of the commissioners. In many areas, the river calls began in early spring and continued throughout the entire irrigation season.

Early in 2004, a considerable amount of time was spent researching protests to the bills sent out under the Water Administration Fee Program. This work continued until the legislature repealed the law in the 2004 legislative session.

Another effort involving a considerable amount of time for the Division Engineer and the Assistant was their involvement in the committee working to standardize the coding for water rights and diversion records in Hydrobase. This committee met several times in the winter and spring of 2004 to develop standards for coding water rights. Division 6 began editing our data to conform to these standards, and continued this work throughout the second half of the year as time permitted.

The Statewide Water Supply Initiative (SWSI) meetings were an additional source of workload this year. There were five meetings in 2004 associated with this study. Time was also required to provide input to the consultants and to review reports. The study concluded in the fall of 2004, and the results have been made available to the public. For Division 6, the study showed that current resources should be adequate to handle future demands for water throughout the selected study period.

The Division and Assistant Engineers were heavily involved in the negotiation of the Revised Pot Creek Memorandum of Understanding. Several meetings were held between representatives of Utah and Colorado, and considerable effort was involved in the review of water rights information and the drafting of documents related to the negotiations.

Besides the increased workload caused by the continuing drought, water administration in the Division seems to become more complicated each year. As residential development in the Steamboat Springs area and energy development in the White River drainage increase, providing an adequate level of service is becoming more difficult given our present staffing. This trend will continue in the next few years as additional administration will be required on the lower Yampa River to deliver releases from Elkhead Reservoir for the endangered species, and possibly for the administration of the pending Recreational In-Channel Diversion for the City of Steamboat Springs.

Personnel

In 2004, the Division had a full staff for the first time in several years. In April, Rebecca Elder was hired to fill our vacant water commissioner position on the White River. Rebecca is

responsible for the Piceance Creek drainage, and the White River and its tributaries downstream from the confluence of Piceance Creek with the main stem of the White River. With the addition of Rebecca to our staff, Bill Dunham can again concentrate his efforts on the White River drainage upstream of Piceance Creek.

Our Water Commissioner of the Year for 2004 was Walter Bohrer who is responsible for the lower reach of the Yampa River, the Williams Fork, and the Fortification Creek drainages. Walt's dedication to our agency and its goals and to the water users he serves, earned him the award for 2004.

In the fall of this year, Erin Light assumed supervisory responsibility for the water commissioners on the Yampa River drainage. She will be responsible for the performance plans and annual review of four of the Division staff. In addition to her new supervisory responsibilities, Erin was also designated the Assistant Division Engineer.

As discussed in the workload section of this report, several potential administrative issues may affect our future staffing. Work will continue in the coming year to identify our future needs and formulate a request to address these issues.

An organizational chart for Division 6 is on page 42 of this report.

Training

Division staff members attended training opportunities as shown below.

- John Blair attended training sessions in May and October on the use of the HEC-RAS computer program for the modeling of reservoirs and stream channels.
- Erin Light successfully completed the Supervisory Certificate Program in February.
- Lynne Peters attended the Program Assistants training meeting in Colorado Springs in August.
- Elvis Iacovetto and Bill Dunham attended the training offered at the annual CWOA meeting in Montrose in October.
- Erin Light attended a workshop on effective communication offered in June in Denver.
- All staff received ergonomics training at the Division's fall meeting.

In addition to these specific training sessions, time was set aside at both the spring and fall Division meetings to provide training to all staff on various areas, such as computer programs

and water administration issues. Additionally, the new water commissioner received individual training to acquaint her with the job responsibilities and agency policies.

Our Dam Safety Engineer assisted in the dam owners training seminars in Divisions 5 and 6.

Water Year 2005

Key Objectives for 2005

Listed below are some of the key objectives for 2005

- Finalize the Revised Pot Creek Memorandum of Understanding.
- Revise the combined administration list for the Little Snake River and, together with Wyoming, submit to the Upper Colorado River Compact Commission.
- Continue to update the information in our Water Rights and Structure databases to conform to Hydrobase.
- Develop a good working relationship with the new Water Referee for the Division 5 Court.
- Evaluate the need for additional staffing and develop the necessary background information to support a decision item for future budget considerations.
- Cooperate with Wyoming on identifying and implementing strategies for the delivery of reservoir water from High Savory Dam to users on the Little Snake River.
- Insure compliance with the provisions of the U.S. Supreme Court decision in Nebraska v. Wyoming.
- Complete all scheduled dam inspections.
- Complete and submit all diversion and hydrographic records on time.
- Operate within our allocated budget.
- Provide the necessary resources, training and support to allow our field staff to efficiently and professionally perform their required duties.

Reservoir Storage Summary by District Water Year 2004

WD	ID	RESERVOIR	SOURCE STREAM	AMOUNT IN STORAGE (AF)				
				Date	AF	Minimum	Maximum	End of Year
43	3500	WINDY BILL SPRING POND	EAST BEAVER CK	11/01/03	6.5	10/31/04	6.5	6.5
43	3529	LARSON RES NO 2	TRIBUTARIES-PICEANCE CK	11/01/03	6	10/31/04	6	6
43	3630	BAILEY LAKE RETAIN POND	SWEDE CK	11/01/03	22.8	10/31/04	22.8	22.8
43	3631	BARBOUR POND	MARVINE CK	11/01/03	15	10/31/04	15	15
43	3632	BEAVER LAKE RESERVOIR	VAUGHN CK	11/01/03	66.45	10/31/04	66.45	66.45
43	3633	BIG BEAVER CK RESERVOIR	BIG BEAVER CK	09/09/04	7500	06/23/04	7658	7655
43	3634	BLACK GULCH RES	BLACKS GULCH	11/01/03	40.75	10/31/04	40.75	40.75
43	3636	CABIN LAKE RESERVOIR	VAUGHN CK	11/01/03	16.1	10/31/04	16.1	16.1
43	3638	GOOSMAN RESERVOIR	ELK CK	11/01/03	5.6	10/31/04	5.6	5.6
43	3639	GREGOR RESERVOIR	VAUGHN CK	11/01/03	47	10/31/04	47	47
43	3642	JOHNNY JOHNSON RES	WHITE RIVER	01/08/04	800	07/01/04	900	825
43	3643	KEYSTONE RES 2	PRICE CK	11/01/03	0	10/31/04	0	0
43	3644	KEYSTONE BEN PRICE RES	PRICE CK	11/01/03	0	10/31/04	0	0
43	3645	KEYSTONE RES 3	DEEP CHANNEL CK	11/01/03	0	04/23/04	31.2	0
43	3646	LADY LAKE	VAUGHN CK	11/01/03	4.41	10/31/04	4.41	4.41
43	3647	LARSON RES	TRIBUTARIES-PICEANCE CK	11/01/03	6	10/31/04	6	6
43	3649	LUNNEY RESERVOIR	NINE MILE DRAW	10/31/04	50	04/24/04	82.12	50
43	3651	MCGINNIS MEADOW RES	SOUTH SKINNY FISH CK	11/01/03	87	10/31/04	87	87
43	3652	MCHATTEN RESERVOIR	COAL CK	11/01/03	0	05/17/04	64.2	0
43	3656	PROCTER RESERVOIR	CURTIS CK	11/01/03	0	03/11/04	6.7	0
43	3657	SEVENTH LAKE RESERVOIR	VAUGHN CK	11/01/03	31.62	10/31/04	31.62	31.62
43	3658	SHADOW LAKE RESERVOIR	VAUGHN CK	11/01/03	2.6	10/31/04	2.6	2.6
43	3659	SKINNY FISH RESERVOIR	SKINNY FISH CK	11/01/03	300.7	10/31/04	300.7	300.7

Reservoir Storage Summary by District Water Year 2004

WD	ID	RESERVOIR	SOURCE STREAM	AMOUNT IN STORAGE (AF)				End of Year
				Minimum	AF	Date	Maximum	
43	3660	STUMP LAKE RESERVOIR	VAUGHN CK	11/01/03	10.23	10/31/04	10.23	10.23
43	3662	TRAPPERS LAKE RETAIN PD	NORTH FORK	11/01/03	0.69	10/31/04	0.69	0.69
43	3668	WATKIN RESERVOIR	COAL CK	10/31/04	12	06/14/04	20	12
43	3669	WEST MILLER RESERVOIR	WEST MILLER CK	11/01/03	30	06/01/04	40	30
43	3671	WILSON RES	EAST FLAG CK	10/31/04	2	11/01/03	10	2
43	3716	JOY JOY & WATSON RES	FAWN CK	11/01/03	5.88	10/31/04	5.88	5.88
43	3717	EVACUATION CR LAKE RES	WEST EVACUATION CK	04/29/04	64	04/29/04	64	64
43	3718	PARSONS POND NO. 1	TRIBUTARIES-PICEANCE CK	11/01/03	1.3	10/31/04	1.3	1.3
43	3719	PARSONS POND NO. 2	TRIBUTARIES-PICEANCE CK	11/01/03	1.3	10/31/04	1.3	1.3
43	3722	JESSUP RESERVOIR	PICEANCE CK	10/01/04	50	04/12/04	76.5	50
43	3723	JONES RESERVOIR	PICEANCE CK	07/02/04	1	04/22/04	21.5	1
43	3736	WEST MARVINE POND 1	MARVINE CK	11/01/03	2	10/31/04	2	2
43	3737	WEST MARVINE POND 2	MARVINE CK	11/01/03	2	10/31/04	2	2
43	3738	WEST MARVINE POND 3	MARVINE CK	11/01/03	6	10/31/04	6	6
43	3739	DIAMOND M REARING PONDS	MARVINE CK	11/01/03	0.75	10/31/04	0.75	0.75
43	3751	VIOLETT SPRINGS POND #1	YELLOW CK	04/16/04	3.8	04/16/04	3.8	3.8
43	3752	VIOLETT SPRINGS POND #2	YELLOW CK	04/16/04	8.6	04/16/04	8.6	8.6
43	3754	BUBBA'S POND	PICEANCE CK	11/01/03	2.5	10/31/04	2.5	2.5
43	3755	BRUCE'S POND	PICEANCE CK	11/01/03	1.5	10/31/04	1.5	1.5
43	3756	CHASE'S POND	PICEANCE CK	11/01/03	1.2	10/31/04	1.2	1.2
43	3757	COOKIE'S POND	PICEANCE CK	11/01/03	0	04/26/04	2	0
43	3761	JODY'S POND	PICEANCE CK	11/01/03	0	04/26/04	3	0.25
43	3762	JODY'S POND NO. 2	PICEANCE CK	11/01/03	3	10/31/04	3	3

Reservoir Storage Summary by District Water Year 2004

WD	ID	RESERVOIR	SOURCE STREAM	AMOUNT IN STORAGE (AF)				
				Date	Minimum AF	Maximum Date	AF	End of Year
43	3763	MOMO'S POND	PICEANCE CK	11/01/03	1.5	10/31/04	1.5	1.5
43	3766	RUDY'S POND	PICEANCE CK	11/01/03	2.5	10/31/04	2.5	2.5
43	3767	RYAN'S POND	PICEANCE CK	11/01/03	1.5	10/31/04	1.5	1.5
43	3769	BIG LICK RES	BIG BEAVER CK	11/01/03	50	06/03/04	71	69
43	3770	TODD AND TRACY'S POND	PICEANCE CK	11/01/03	1.5	10/31/04	1.5	1.5
43	3771	TURGOOSE POND	PICEANCE CK	11/01/03	0	04/26/04	0.25	0.15
43	3772	EXXON LOVE RANCH RESERVO	PICEANCE CK	11/01/03	8	04/27/04	30	10
43	3774	EXXON B&M RESERVOIR	PICEANCE CK	10/04/04	5	04/09/04	50	5
43	3893	MARK RES NO 1	WEST CK	04/26/04	6	04/26/04	6	6
43	3897	MARK RES NO 3	WEST CK	04/26/04	28.3	04/26/04	28.3	28.3
43	3904	BALL LAKE RESERVOIR	MARVINE CK	11/01/03	75	10/31/04	75	75
43	4249	DORTCH POND NO 1	TRIBUTARIES-SOUTH FK	11/01/03	13.6	10/31/04	13.6	13.6
43	4250	DORTCH POND NO 2	TRIBUTARIES-SOUTH FK	11/01/03	5	10/31/04	5	5
43	4272	JACOBS RESERVOIR	STRAWBERRY CK	06/24/04	2	04/23/04	20	2
43	4273	JONES STOCK & FISH POND	TRIBUTARIES-SOUTH FK	11/01/03	0.75	10/31/04	0.75	0.75
43	4280	MARK RES NO 2	WEST CK	04/26/04	31.02	04/26/04	31.02	31.02
43	4284	NINE MILE RANCH RES 1	CURTIS CK	07/19/04	0	04/14/04	40.71	0
43	4291	RAINBOW LAKE	NORTH FORK	11/01/03	36.7	10/31/04	36.7	36.7
43	4294	RAT MT POND NO 1	MARVINE CK	11/01/03	1	10/31/04	1	1
43	4307	TERLEP POND	FAWN CK	11/01/03	6.5	10/31/04	6.5	6.5
43	4308	THEOS RES 1	COAL CK	11/01/03	35	04/14/04	51	35
43	4320	JENSEN RES 1	CURTIS CK	10/31/04	16	04/14/04	19	16
43	4327	SADDLE HORSE PARK RES	DRY CK	11/01/03	12	10/31/04	12	12

Reservoir Storage Summary by District

Water Year 2004

WD	ID	RESERVOIR	SOURCE STREAM	AMOUNT IN STORAGE (AF)				End of Year
				Minimum	AF	Date	Maximum	
43	4433	TAYLOR DRAW RES	WHITE RIVER	13800	13800	10/04/04	13800	13800
43	4446	JOHNSON POND 15	TRIBUTARIES-PICEANCE CK	13	13	10/01/04	13	13
43	4461	KAWCAK POND NO 1	TRIBUTARIES-NORTH FK	7.4	7.4	07/30/04	7.4	7.4
43	4463	VANDIVER POND	TRIBUTARIES-NORTH FK	24.83	24.83	10/31/04	24.83	24.83
43	4497	BLUE MOUNTAIN RES	WOLF CK	54	54	04/15/04	54	54
43	4499	REEVES RES	WOLF CK	34	34	04/15/04	34	34
43	4504	TAYLOR RES	HUNTER CK	81	81	04/16/04	81	81
			TOTAL FOR DISTRICT 43	23,571	24,208		24,208	23,773
44	3504	SULLIVAN RES LOWER	CEDAR CK	49.2	49.2	05/27/04	50	49.2
44	3673	WADDLE CK RES	WADDLE CK	39.7	39.7	09/16/04	39.7	39.7
44	3674	WILSON RESERVOIR	GOOD SPRING CK	68.3	68.3	06/02/04	69.5	68.3
44	3675	WYMAN RES	LITTLE BEAVER CK	20.8	20.8	08/25/04	37.2	36
44	3677	ANDERSON RES	NORTH FK of ELKHEAD CK	0	0	05/10/04	34.8	0
44	3681	BUNKER LAKE RES	BUNKER CK	169.6	169.6	06/10/04	190.9	169.6
44	3682	COVE LAKE RES	MORAPOS CK	59.5	59.5	05/27/04	74.7	59.5
44	3683	COVE RES	MORAPOS CK	33.3	33.3	05/27/04	115	33.3
44	3686	DRESCHER RES	BASIN GULCH	12.2	12.2	05/19/04	34.7	12.2
44	3688	DUNKLEY DEUBEAU RES	WILLOW CK	1.7	1.7	05/17/04	47.78	1.7
44	3689	D D & E RES	MILK CK	4.62	4.62	06/02/04	1249	233
44	3695	LEFTWICH RES	BOONE CK	34	34	03/22/04	35	34
44	3701	POOSE CK RES	POOSE CK	277.3	277.3	09/28/04	277.3	277.3
44	3702	ROBY RES	MORAPOS CK	12	12	06/09/04	21.7	12

Reservoir Storage Summary by District Water Year 2004

WD	ID	RESERVOIR	SOURCE STREAM	AMOUNT IN STORAGE (AF)					
				Date	AF	Minimum	Maximum	AF	End of Year
44	3706	SELLERS CROWELL RES	WILLOW CK	09/28/04	90.7	06/29/04	105.9	90.7	90.7
44	3722	ELLGEN RESERVOIR NO 2	MC LERNON DRAW	06/22/04	0	04/30/04	8.3	0	0
44	3723	B & B RESERVOIR	FLUME GULCH	08/06/04	0	08/06/04	0	0	0
44	3736	CULVERWELL RESERVOIR	SAND SPRING GULCH	05/03/04	70.2	03/20/04	296	70.2	70.2
44	3738	FREEMAN RESERVOIR	LITTLE COTTONWOOD CK	08/12/04	111.9	05/07/04	124.8	111.9	111.9
44	3739	SHAFFER RESERVOIR	WILLOW CK	07/20/04	0	05/17/04	30.96	0	0
44	3790	SADDLE RES	BUTLER CK	07/02/04	120.6	05/27/04	135.6	120.6	120.6
44	3824	BISKUP RESERVOIR	TWO SPRINGS GULCH	08/06/04	11.5	09/01/04	36.5	11.5	11.5
44	3902	ELKHEAD RESERVOIR	ELKHEAD CK	08/10/04	13132	03/22/04	13574	13132	13132
44	3925	FLAT TOP RES	SECOND CK	09/16/04	102.6	05/05/04	104.5	102.6	102.6
44	4051	CHESNUT RES NO 2	TRIBUTARIES-EAST FK	05/27/04	10	08/10/04	10	10	10
44	4381	PEARCE RES	TRIBUTARIES	05/12/04	50	09/03/04	50	50	50
44	4436	ROBB PIT	TRIBUTARIES	05/12/04	807	09/03/04	807	807	807
			TOTAL FOR DISTRICT 44		15,289		17,561	15,532	15,532
47	3523	ABRAHAM POND	TRIBUTARIES-ILLINOIS R	08/05/04	0	10/31/04	14	14	14
47	3528	ANTELOPE POND	TRIBUTARIES-ILLINOIS R	08/13/04	0	10/31/04	53	53	53
47	3529	BREWER POND	TRIBUTARIES-ILLINOIS R	11/04/03	13	08/05/04	38	15	15
47	3530	ELK POND	TRIBUTARIES-ILLINOIS R	11/04/03	0	03/17/04	45	0	0
47	3531	POTTER CREEK POND	TRIBUTARIES-ILLINOIS R	11/01/03	0	03/24/04	69	30	30
47	3532	SEVENTY SIX POND	TRIBUTARIES-ILLINOIS R	08/05/04	0	03/17/04	20	0	0
47	3533	WILSON'S POND	TRIBUTARIES-ILLINOIS R	11/05/03	6.4	10/31/04	13.7	13.7	13.7
47	3534	ALKALI POND	POTTER CK	03/18/04	0	08/03/04	9	4	4

Reservoir Storage Summary by District Water Year 2004

WD	ID	RESERVOIR	SOURCE STREAM	AMOUNT IN STORAGE (AF)				End of Year
				Minimum	AF	Maximum	AF	
				Date	AF	Date	AF	Year
47	3535	ALLARD CONTOUR, MID POND	TRIBUTARIES-ILLINOIS R	11/01/03	0	10/28/04	8	8
47	3536	ALLARD CONTOUR N. POND	TRIBUTARIES-ILLINOIS R	11/01/03	0	10/28/04	6	6
47	3537	ALLARD POND, NORTH	TRIBUTARIES-ILLINOIS R	11/01/03	0	10/28/04	0	0
47	3538	ALLARD COUNTOUR S. POND	TRIBUTARIES-ILLINOIS R	11/01/03	0	10/28/04	9	9
47	3539	ALLARD POND, SOUTH	TRIBUTARIES-ILLINOIS R	11/01/03	0	10/28/04	0	0
47	3540	ANDERSON CONTOUR POND	TRIBUTARIES-ILLINOIS R	11/01/03	0	10/28/04	0	0
47	3541	ANDERSON DRAIN	ILLINOIS RIVER	11/01/03	0	10/28/04	0	0
47	3542	AVOCET POND	TRIBUTARIES-ILLINOIS R	11/05/03	4	03/18/04	12	6
47	3543	BIRDIE POND	TRIBUTARIES-ILLINOIS R	11/05/03	4	10/28/04	7.5	7.5
47	3544	BLUEBILL POND	TRIBUTARIES-ILLINOIS R	11/04/03	14	10/31/04	19	19
47	3545	BROCKER POND NORTH	TRIBUTARIES-ILLINOIS R	11/01/03	0	10/28/04	0	0
47	3546	BUDDIES POND	TRIBUTARIES-ILLINOIS R	11/01/03	0	10/31/04	0	0
47	3547	BULRUSH POND	TRIBUTARIES-ILLINOIS R	11/01/03	0	10/31/04	0	0
47	3548	CASE RES #2 ANNEX POND	TRIBUTARIES-ILLINOIS R	08/05/04	0	11/04/03	8	0
47	3549	CATTAIL POND	TRIBUTARIES-ILLINOIS R	11/01/03	0	10/28/04	0	0
47	3550	COYOTE POND	TRIBUTARIES-ILLINOIS R	11/05/03	0.2	10/28/04	2	2
47	3551	DIVERSION POND	TRIBUTARIES-ILLINOIS R	11/01/03	0	10/31/04	12	12
47	3552	EAGLE POND	TRIBUTARIES-ILLINOIS R	08/05/04	4	10/28/04	19	19
47	3553	EISEMANN POND	TRIBUTARIES-ILLINOIS R	08/12/04	0	10/28/04	9.3	9.3
47	3554	FISH HATCHERY POND, EAST	TRIBUTARIES-ILLINOIS R	11/05/03	7	08/03/04	7.2	7
47	3555	FISH HATCHERY POND WEST	POTTER CK	11/05/03	1.8	10/28/04	1.8	1.8
47	3556	FISHERMAN'S PARKING POND	TRIBUTARIES-ILLINOIS R	11/01/03	0	10/28/04	0	0
47	3557	FOLLETT POND	TRIBUTARIES-ILLINOIS R	08/05/04	0	10/31/04	8	8

Reservoir Storage Summary by District Water Year 2004

WD	ID	RESERVOIR	SOURCE STREAM	AMOUNT IN STORAGE (AF)				End of Year
				Date	Minimum AF	Maximum AF	Date	
47	3558	FOX POND	SPRING CK	11/01/03	0	03/16/04	60	0
47	3559	GERM POND	TRIBUTARIES-ILLINOIS R	10/31/04	17.5	11/01/03	28	17.5
47	3560	GOOSE POND	TRIBUTARIES-ILLINOIS R	08/05/04	0	11/04/03	34	0
47	3561	GREASEWOOD POND	TRIBUTARIES-ILLINOIS R	11/01/03	0	10/31/04	0	0
47	3562	HAMPTON NO 1 POND	TRIBUTARIES-ILLINOIS R	11/04/03	0	10/28/04	0	0
47	3563	HAMPTON NO 2 POND	TRIBUTARIES-ILLINOIS R	10/31/04	3	11/04/03	11	3
47	3564	HAMPTON NO 3 POND	TRIBUTARIES-ILLINOIS R	10/28/04	0	03/16/04	17.5	0
47	3565	HOME POND	TRIBUTARIES-ILLINOIS R	11/01/03	0	10/31/04	18	18
47	3566	HORSESHOE POND	TRIBUTARIES-ILLINOIS R	08/03/04	0.2	10/28/04	1.5	1.5
47	3567	KITCHEN POND	TRIBUTARIES-ILLINOIS R	11/01/03	9	10/28/04	9	9
47	3568	LIVING ROOM POND	TRIBUTARIES-ILLINOIS R	11/01/03	0	03/17/04	0.4	0
47	3569	MARSH POND	ANTELOPE CK	11/01/03	0	03/18/04	9	0
47	3570	MCCAMMON POND NORTH	TRIBUTARIES-ILLINOIS R	11/01/03	0	10/31/04	5.6	5.6
47	3571	MCCAMMON POND SOUTH	TRIBUTARIES-ILLINOIS R	08/05/04	0	10/31/04	26	26
47	3572	N. TOUR ROUTE POND	TRIBUTARIES-ILLINOIS R	11/01/03	0	03/17/04	0.1	0
47	3573	OLD ROAD POND	TRIBUTARIES-ILLINOIS R	11/05/03	0	10/28/04	2.5	2.5
47	3574	ONE TWENTY FIVE POND	TRIBUTARIES-ILLINOIS R	10/31/04	3.3	03/24/04	14	3.3
47	3575	PATTEN POND	TRIBUTARIES-ILLINOIS R	08/12/04	0.2	10/28/04	8	8
47	3576	POTHOLE POND	TRIBUTARIES-ILLINOIS R	11/01/03	0	10/28/04	0	0
47	3577	PRAIRIE DOG POND	ANTELOPE CK	11/05/03	0	10/28/04	11	11
47	3578	RAT DITCH POND	TRIBUTARIES-ILLINOIS R	08/05/04	0	10/28/04	7.1	7.1
47	3579	RIZOR POND	TRIBUTARIES-ILLINOIS R	08/05/04	0	10/31/04	8.5	8.5
47	3580	ROADSIDE POND NORTH	TRIBUTARIES-ILLINOIS R	11/01/03	0	10/28/04	0	0

Reservoir Storage Summary by District Water Year 2004

WD	ID	RESERVOIR	SOURCE STREAM	AMOUNT IN STORAGE (AF)				End of Year
				Minimum	AF	Maximum	AF	
47	3581	ROADSIDE POND SOUTH	TRIBUTARIES-ILLINOIS R	0	10/28/04	0	0	0
47	3582	ROSS POND	POTTER CK	0	10/28/04	0	0	0
47	3583	SCHOOL POND NORTH	TRIBUTARIES-ILLINOIS R	0	10/28/04	0	0	0
47	3584	SCHOOL POND SOUTH	TRIBUTARIES-ILLINOIS R	0	10/28/04	0	0	0
47	3585	SMITH POND	TRIBUTARIES-ILLINOIS R	0	10/28/04	12	12	12
47	3586	SOLBERG POND	TRIBUTARIES-ILLINOIS R	0	10/28/04	11	11	11
47	3587	SOUTH TOUR ROUTE POND	TRIBUTARIES-ILLINOIS R	0	03/17/04	0.8	0.8	0
47	3588	SPRING CREEK POND	SPRING CK	18	10/28/04	48	48	48
47	3589	VARNEY POND	TRIBUTARIES-ILLINOIS R	0	10/28/04	0	0	0
47	3590	WILLFORD POND	TRIBUTARIES-ILLINOIS R	0	10/28/04	0	0	0
47	3594	BENNETT RESERVOIR	SOUTH FK of BEAVER CK	35	06/25/04	108	108	35
47	3595	BIG CREEK RESERVOIR	SOUTH FK of BIG CK	6900	09/30/04	6900	6900	6900
47	3597	BUFFALO RES	BUFFALO CK	444	05/05/04	486	486	455
47	3598	BUTTE RES	TRIBUTARIES	207	09/25/04	754	754	754
47	3599	CARLSTROM RES	MICHIGAN RIVER	281	10/05/04	530	530	530
47	3600	CASE RES NO 1	ANTELOPE CK	70	04/07/04	117	117	70
47	3601	CASE RES NO 2	POTTER CK	32	08/05/04	72	72	66
47	3602	CASE RES NO 3	POTTER CK	66	10/28/04	66	66	66
47	3603	CLAYTON RESERVOIR	BUFFALO CK	49	04/26/04	207	207	133
47	3604	DARCY RES	LIL WILLOW AKA ROCK CK	0	10/31/04	0	0	0
47	3605	FULLER RES	COW CK	2	05/19/04	8.3	8.3	3
47	3608	HECLA RESERVOIR	ARAPAHOE CK	176	04/09/04	255	255	225
47	3610	JACKSON RES	RILEY CK	91	04/26/04	119	119	119

Reservoir Storage Summary by District Water Year 2004

WD	ID	RESERVOIR	SOURCE STREAM	AMOUNT IN STORAGE (AF)				End of Year
				Minimum	AF	Maximum	AF	
				Date	AF	Date	AF	Year
47	3613	LAKE ROSLYN RES	HOWD CREEK	08/11/04	286	09/30/04	290	290
47	3614	MACFARLANE RES	SOAP CK	08/13/04	3613	04/24/04	5981	5400
47	3615	MCGOWAN RES	MIDDLE FK of MEXICAN CK	09/28/04	0	04/26/04	39.8	0
47	3616	MEXICAN RESERVOIR	MEXICAN CK	07/20/04	31.6	08/15/04	152	87.2
47	3617	P W FISCHER RES	FISCHER DRAW	11/01/03	0	06/22/04	29	0
47	3620	SHAWVER RES	INDIAN CK of ILLINOIS R	11/01/03	0	04/01/04	1.9	0
47	3621	SLACK & WEISS RES	NINEGAR CK	11/01/03	12	06/01/04	140	52.9
47	3622	SOUTH ARAPAHOE RES	ARAPAHOE CK	07/14/04	0	04/26/04	16	0
47	3623	STAMBAUGH RES	CROSBY CK	11/01/03	88	06/27/04	139	88
47	3625	THREE MILE RES	THREE MILE CK	11/01/03	5.7	05/06/04	35.8	18
47	3626	VANVALKENBURG RES	ED VAN VALKENBURG DRAW	04/26/04	0	09/29/04	0	0
47	3627	WALDEN RESERVOIR	ILLINOIS RIVER	09/29/04	1399	04/29/04	4460	2158
47	3628	WEST ARAPAHOE RES	ARAPAHOE CK	11/01/03	0	05/19/04	217	20
47	3629	WILLS RES	SIX MILE CK	11/01/03	0	06/22/04	5	0
47	3630	TWO LEDGE RES	COYOTE CK	07/19/04	20.7	10/31/04	43	43
47	3638	SHEARER SPRINGS RES #1	LIL WILLOW AKA ROCK CK	04/28/04	9.3	09/30/04	9.3	9.3
47	3639	SHEARER SPRING RES #2	LIL WILLOW AKA ROCK CK	06/13/04	73	09/30/04	75	75
47	3640	GOOD MEDICINE RESERVOIR	SALES CK	08/31/04		09/15/04		
47	3652	FOUR ZERO FOUR POND	TRIBUTARIES-ILLINOIS R	08/12/04	0	03/17/04	2	0
47	3653	FOUR ZERO THREE POND	TRIBUTARIES-ILLINOIS R	11/01/03	0	10/28/04	0	0
47	3664	BLACK WOLF LAKE	BIG WILLOW CK	06/07/04	1.4	09/02/04	1.4	1.4
47	3667	RAYS RESERVOIR	BIG WILLOW CK	09/02/04		10/05/04		
47	3669	KIDS POND	DEER CK	10/25/04	1.4	04/10/04	1.5	1.4

Reservoir Storage Summary by District Water Year 2004

WD	ID	RESERVOIR	SOURCE STREAM	AMOUNT IN STORAGE (AF)				End of Year
				Minimum	AF	Date	Maximum	
47	3670	ROBBIES POND	DEER CK	3	3	10/25/04	3	3
47	3671	MIKES POND	DEER CK	1.4	1.4	04/10/04	2	1.4
47	3672	INDIAN CREEK #1	INDIAN CK of ILLINOIS R	25	25	10/25/04	25	25
47	3673	INDIAN CREEK #2	INDIAN CK of ILLINOIS R	13	13	11/01/03	15	13
47	3675	UPPER THREE MILE DAM #1	THREE MILE CK	15	15	11/01/03	15	15
47	3676	UPPER THREE MILE DAM #2	THREE MILE CK	15	15	09/30/04	15	15
47	3677	UPPER THREE MILE DAM #3	THREE MILE CK	15	15	09/30/04	15	15
47	3678	LABRADOR LAKE	MCKINNON CK	1	1	05/20/04	3.5	2
47	3679	TIMBER POND	MCKINNON CK	1.7	1.7	11/01/03	8.4	1.7
47	3683	HEADWATERS POND	ANTELOPE CK	5	5	03/18/04	20	10.2
47	3684	BILBEISI POND	POTTER CK	2	2	11/04/04	2.8	2.3
47	3685	NORTH HACKLEY POND	ILLINOIS RIVER	1.4	1.4	03/21/04	2	1.4
47	3686	SOUTH HACKLEY POND	ILLINOIS RIVER	0	0	03/21/04	1.1	0
47	3687	RODRIQUEZ POND	ILLINOIS RIVER	0	0	03/17/04	13.7	0
47	3688	HOFMANN POND #1	NORTH PLATTE RIVER	39.4	39.4	09/30/04	42.2	42
47	3689	HOFMANN POND #2	NORTH PLATTE RIVER	11.8	11.8	09/30/04	12.4	12.3
47	3690	HOFMANN POND #3	NORTH PLATTE RIVER	0	0	09/30/04	5.2	5
47	3691	HOFMANN POND #4	NORTH PLATTE RIVER	1.9	1.9	05/11/04	3.2	2.1
47	3692	HOFMANN POND #5	NORTH PLATTE RIVER	0.65	0.65	09/30/04	1.1	1.1
47	3693	HOFMANN POND #6	NORTH PLATTE RIVER	0	0	05/04/04	2.9	0.6
47	3725	ADDISON RESERVOIR	BUFFALO CK	2.9	2.9	10/08/04	38.5	38.5
47	3742	LAUNE RESERVOIR	TRIBUTARIES	1678	1678	09/25/04	2231	2231
47	3743	SEYMOUR RES	BIG GRIZZLY CK	0	0	10/08/04	525	525

Reservoir Storage Summary by District Water Year 2004

WD	ID	RESERVOIR	SOURCE STREAM	AMOUNT IN STORAGE (AF)				End of Year
				Minimum	AF	Maximum	AF	
				Date	AF	Date	AF	Year
47	3744	COYTE RESERVOIR	ARAPAHOE CK	07/07/04	30.7	09/29/04	38.5	38.5
47	3746	POLE MOUNTAIN RES	MIDDLE FK of MEXICAN CK	11/01/03	0	05/05/04	465	397
47	3750	LAKE JOHN	LAKE CK	06/20/04	6191	09/30/04	7035	7035
47	3751	GINGER QUILL RES NO 2	THREE MILE CK	11/01/03	10.5	09/30/04	10.5	10.5
47	3752	GINGER QUILL RESERVOIR	THREE MILE CK	11/01/03	27.5	09/30/04	38	38
47	3753	NORTH MICHIGAN CK RES	NORTH FK of MICHIGAN R	03/19/04	1131	04/06/04	2190	1290
47	3756	HOUSE RES	LOST CK	11/01/03	44.8	09/28/04	44.8	44.8
47	3757	RIDINGS RES	BUFFALO CK	11/01/03	0	04/23/04	46.1	0
47	3766	ROCK RESERVOIR	NEWCOMB CK	09/30/04	0	07/01/04	35	0
47	3768	KETTLE RESERVOIR	NEWCOMB CK	11/01/03	0	06/12/04	22	0
47	3777	NINEGAR RESERVOIR	NINEGAR CK	07/15/04	0	09/28/04	24	24
47	3778	FISCHER LAKE	MICHIGAN RIVER	11/01/03	28	09/29/04	58.4	58.4
47	4335	MEADOW CREEK RES	MEADOW CK	07/14/04	1767	04/16/04	4750	4160
47	4356	MUDDY PASS RES	BIG GRIZZLY CK	11/01/03	48	06/01/04	58	55.5
47	4358	WADE LAKE	NINEGAR CK	03/29/04	51	09/03/04	51	51
47	4432	SPRING CK RES	SPRING CK	04/27/04	50	09/30/04	50	50
47	4433	MUSKRAT POND	POTTER CK	10/31/04	149	03/17/04	293	149
			TOTAL FOR DISTRICT 47		25,361		40,207	34,401
54	3519	BOYER RESERVOIR	WILLOW CK, EAST	06/01/04	119	06/01/04	119	119
54	3589	ELK LAKE RES	WILLOW CK	07/08/04	300	08/01/04	398.4	300
54	3780	MARTIN CULL RESERVOIR	FOUR MILE CK	06/08/04	22.5	05/18/04	215	45
54	3946	MCCARGER RES	INDEPENDENCE CK	07/01/04	64.2	07/01/04	64.2	64.2

Reservoir Storage Summary by District Water Year 2004

WD	ID	RESERVOIR	SOURCE STREAM	AMOUNT IN STORAGE (AF)				End of Year
				Minimum	AF	Maximum	AF	
			TOTAL FOR DISTRICT 54	506		797	528	
56	3710	BASSETT RESERVOIR NO 1	MATT SPRING CK	30	03/23/04	32.7	32.7	
56	3712	DRY LAKE RESERVOIR	DRY CK of POT CK	0	04/28/04	0	0	
56	3714	MASSEY RESERVOIR	DRY CK of POT CK	0	04/28/04	0	0	
56	3740	BASSETT RESERVOIR NO 2	BULL CANYON	98.32	03/23/04	98.32	98.32	
56	3903	CALDER RESERVOIR NO. 2	POT CK	0.5	04/28/04	0.5	0.5	
56	3904	CROUSE RESERVOIR	POT CK	0	04/28/04	0	0	
56	3921	COVE RES	COTTONWOOD CK	0.25	04/23/04	0.25	0.25	
56	4452	HOUSE RESERVOIR	ANTONE CANYON	0	03/16/04	17	0	
56	4453	IRISH LAKE	IRISH LAKE BASIN	0	03/16/04	0	0	
			TOTAL FOR DISTRICT 56	129.07		148.77	132	
57	3500	SENECA MINE POND 006	HUBBERSON GULCH	4.92	01/01/04	14.23	4.92	
57	3501	SEDIMENTATION POND A	FOIDEL CK	210	10/31/04	210	210	
57	3516	WOLF MOUNTAIN RES	WOLF CK	78	05/15/04	82	80	
57	3523	PEABODY POND Y-1	SAGE CK	14.2	04/01/04	14.4	14.2	
57	3536	POND D	FOIDEL CK	75	10/31/04	75	75	
57	3541	HUNTER NO 1 RES	MIDDLE CK	3	05/15/04	10	3	
57	3543	CAMPSITE RESERVOIR	SMUIN GULCH	1.5	10/31/04	2	2	
57	3549	APPLE RES	DRY FORK	0	04/05/04	10	0	
57	3550	BASIN RES	BUCHANAN GULCH	0	10/31/04	0	0	
57	3551	BROCK RESERVOIR	BROCK GULCH	4	04/15/04	5	4	

Reservoir Storage Summary by District Water Year 2004

WD	ID	RESERVOIR	SOURCE STREAM	AMOUNT IN STORAGE (AF)				
				Date	Minimum AF	Maximum Date	AF	End of Year
57	3555	ECKMAN PARK RES 1	FOIDEL CK	11/01/03	2	05/01/04	4	2
57	3560	EMRICH RES	TEMPLE GULCH	11/01/03	0	04/19/04	20	0
57	3564	GREASEWOOD FLAT RES	DILL GULCH	11/01/03	0	04/19/04	8	0
57	3571	JAMES MARION YOAST RES	YOAST GULCH	07/13/04	20	05/10/04	201	20
57	3572	J C TEMPLE RES 1	TEMPLE GULCH	11/01/03	90	05/01/04	460	300
57	3574	MORGAN CREEK RES 1	MORGAN CK	11/01/03	0	05/01/04	100	0
57	3575	NOFSTGER RES	SCOTCHMANS GULCH	10/31/04	70	04/14/04	100	70
57	3576	NOFSTGER ZEIGLER RES	SCOTCHMANS GULCH	10/31/04	40	05/20/04	57	40
57	3582	SEATON RES	MIDDLE FISH CK	11/01/03	1	10/31/04	1	1
57	3583	SHERIFF RES	TROUT CK	11/01/03	987	06/15/04	1106	992
57	3585	WHETSTONE RES	WHETSTONE CK	10/25/04	3	04/05/04	12	3
57	3587	YOAST RESERVOIR 1	YOAST GULCH	11/01/03	0	05/10/04	10	1
57	3610	DEERWOOD POND	TRIBUTARIES-TROUT CK	10/25/04	12.5	04/05/04	13.6	12.5
57	3612	HOPES POND	TRIBUTARIES-TROUT CK	11/01/03	1	04/12/04	2	1
57	3620	PILOTS POND	WOLF CK	10/31/04	10	05/15/04	14	10
57	3639	HEADQUARTERS LAKE	TROUT CK	11/01/03	10.5	10/31/04	10.5	10.5
57	3640	THAMES LAKE	TROUT CK	11/01/03	11.4	10/31/04	11.4	11.4
57	3641	BAKER LAKE	TROUT CK	11/01/03	9	10/31/04	9	9
57	3642	DUCK POND	TROUT CK	11/01/03	0.75	10/31/04	0.75	0.75
57	3644	HUNTER UPPER RESERVOIR	MIDDLE CK	07/01/04	3.5	04/15/04	4	4
57	3654	PEROULIS POND	FISH CK	05/24/04	3	05/10/04	5	5
57	3655	COTTONWOOD POND	TEMPLE GULCH	11/01/03	40	10/31/04	40	40
57	3656	COTTONWOOD SMALL POND	DRY CK	11/01/03	1	10/31/04	1	1

Reservoir Storage Summary by District Water Year 2004

WD	ID	RESERVOIR	SOURCE STREAM	AMOUNT IN STORAGE (AF)				End of Year
				Minimum	AF	Maximum	AF	
				Date	AF	Date	AF	Year
57	3657	HUNTER MIDDLE RESERVOIR	MIDDLE CK	07/01/04	4.5	10/31/04	5	5
57	3658	HUNTER LOWER RESERVOIR	MIDDLE CK	07/01/04	6	04/15/04	6.5	6
57	3761	EAST OF MINE SHOP IMPND	GRASSY CK	11/01/03	8	04/03/04	10	9
57	3772	KOWACH RESERVOIR 1	BUCHANAN GULCH	11/01/03	30	04/15/04	33	30
57	3775	COZZENS WALROD RESERVOIR	HUTCHINSON DRAW	11/01/03	0	05/15/04	10	2
57	3786	HAYDEN RAW WATER RES	SAGE CK	01/19/04	729.9	02/05/04	826.5	823.8
57	3793	WADGE PIT RES	GRASSY CK	11/01/03	142	10/31/04	150	150
57	4000	CURTIS GULCH STOCK POND	CURTIS GULCH	10/31/04	30	11/01/03	35	30
			TOTAL FOR DISTRICT 57		2,657		3,689	2,983
58	3500	ALLEN BASIN RES	MIDDLE HUNT CK	08/12/04	153	06/08/04	1095	349
58	3501	ALMA M BAER RES	FISH CK	11/01/03	2.6	10/31/04	2.6	2.6
58	3503	BISON PARK RES	LAWSON CK	11/01/03	0	05/01/04	23	0
58	3504	BULL PARK RES 2	WATSON CK	11/01/03	0	05/15/04	20	0
58	3505	BURNT MESA RES	SOUTH HUNT CK	11/01/03	7	06/01/04	25	15
58	3506	CHAPMAN RES	LITTLE OAK CK	09/28/04	50	05/05/04	247	50
58	3508	FISH CREEK RES	MIDDLE FK of FISH CK	05/01/04	2971	07/01/04	4216	3977
58	3509	FISH LAKE RES 2	WHEELER, LAKE CK	11/01/03	35	10/31/04	35	35
58	3511	GARDNER PARK RESERVOIR	GARDNER PARK CK	10/31/04	460	05/25/04	598	460
58	3512	HAHNS PEAK RES	WILLOW CK	11/01/03	601	10/31/04	601	601
58	3513	HEART LAKE RES	WATSON CK	11/01/03	0	06/15/04	167	43
58	3518	LAKE CREEK RES	WHEELER, LAKE CK	11/01/03	292	10/31/04	292	292
58	3519	LAKE WINDEMERE RES	DE CORA GULCH	11/01/03	0	05/31/04	50	3

Reservoir Storage Summary by District Water Year 2004

WD	ID	RESERVOIR	SOURCE STREAM	AMOUNT IN STORAGE (AF)				End of Year
				Date	Minimum AF	Maximum AF	Year	
58	3520	LEE RESERVOIR	CHIMNEY CK OR S FK	11/01/03	0	05/01/04	9	0
58	3521	LESTER CK RESERVOIR	LESTER CK	10/31/04	5390	04/07/04	5810	5390
58	3522	LONG LAKE RES	SOUTH FK of FISH CK	11/01/03	214	10/01/04	380	308
58	3525	MCCHIVVIS RES	WATSON CK	11/01/03	0	05/24/04	127	10
58	3528	MOORE PARK RES	MOORE PARK CK	11/01/03	21	10/31/04	21	21
58	3530	OAK CREEK RES	OAK CK	11/01/03	2	09/29/04	2	2
58	3532	RAMS HORN RES	DOME CK	11/01/03	122	10/31/04	122	122
58	3533	REYNOLDS RES	TRIBUTARIES	11/01/03	0	10/31/04	0	0
58	3539	SIMON RES 1	MIDDLE HUNT CK	11/01/03	247	05/07/04	734	394
58	3540	STILLWATER RES 1	BEAR RIVER	07/28/04	537	05/22/04	2415	1074
58	3541	STUCKEY DIST RES	SPRING CK	11/01/03	0	10/31/04	0	0
58	3544	TRULL CR RES	TRULL CK	11/01/03	0	06/01/04	150	0
58	3545	BEAR LAKE	BEAR RIVER	11/01/03	620	10/31/04	620	620
58	3546	WHEELER RES	WHEELER, LAKE CK	11/01/03	37	10/31/04	37	37
58	3547	WHITELEY NELSON RES	WILSON CK	11/01/03	75	05/01/04	429	200
58	3551	DEER PARK POND 3	WILLEY CK	10/31/04	7	05/05/04	11	7
58	3561	CHARLIES POND	TRIBUTARIES-ELK R	11/01/03	4	10/31/04	4	4
58	3564	OVERMAN RESERVOIR	TRIBUTARIES	11/01/03	0	05/10/04	30	0
58	3569	FOLLY POND	OAK CK	11/01/03	32	05/05/04	45	34
58	3571	MYSTIC RESERVOIR 2	TRULL CK	11/01/03	1	10/31/04	1	1
58	3586	FAIT RESERVOIR	RENFRO CK	11/01/03	4	10/31/04	4	4
58	3587	UPPER SPRING CK RES	SPRING CK	11/01/03	15	10/31/04	15	15
58	3596	LODWICK POND	FISH CK	11/01/03	13	10/31/04	13	13

Reservoir Storage Summary by District Water Year 2004

WD	ID	RESERVOIR	SOURCE STREAM	AMOUNT IN STORAGE (AF)				
				Minimum	AF	Maximum	End of Year	
				Date	AF	Date	AF	Year
58	3599	VALENTINE POND	FISH CK	11/01/03	1.82	10/31/04	1.82	1.82
58	3603	CHAPMAN POND	TRIBUTARIES-ELK R	11/01/03	5	10/31/04	6.9	6.9
58	3629	TARZIAN RES 1	FAWN CK	10/31/04	0.3	05/31/04	2	0.3
58	3631	LAKE CATAMOUNT	YAMPA RIVER	12/02/03	5284	05/08/04	8150	6559
58	3632	HOGUE RES	TRIBUTARIES	11/01/03	3	10/31/04	3	3
58	3635	ROSSI RESERVOIR 1	MIDDLE HUNT CK	06/15/04	5	10/31/04	10	10
58	3644	HOLLINGWORTH FISH POND 2	SODA CK	11/01/03	0.4	10/31/04	0.4	0.4
58	3684	BRENDAN'S POND	FARNESWORTH CK	08/26/04	0.5	10/31/04	1	1
58	3685	CINDY'S POND	FARNESWORTH CK	11/01/03	0.2	10/31/04	0.3	0.3
58	3689	DURYEY DAM	TRIBUTARIES-ELK R	11/01/03	7.5	10/31/04	7.5	7.5
58	3708	MCGILL POND	BUTCHERKNIFE CK	11/01/03	0.2	10/31/04	0.2	0.2
58	3724	BRUMBACK POND	OAK CK	08/20/04	20	10/31/04	22.5	22.5
58	3725	SLATE CREEK DAM	SLATE CK	11/01/03	8	10/31/04	9	9
58	3732	COLEMAN POND	FARNESWORTH CK	08/26/04	1.5	10/31/04	3.4	3.4
58	3767	CROWNER RESERVOIR	BEAVER CK of CHIMNEY CK	11/01/03	0	06/01/04	58	0
58	3770	MARTIN RESERVOIR	MARTIN CK	10/31/04	72	06/01/04	74	72
58	3771	TILLOUJUST LAKE RESERVOIR	MORRISON CK	11/01/03	5.62	10/31/04	5.62	5.62
58	3787	STEAMBOAT LAKE	WILLOW CK	11/01/03	22600	04/05/04	26000	24300
58	3788	HOLLINGWORTH FISH POND	SODA CK	11/01/03	1.5	10/31/04	1.5	1.5
58	3825	UPPER ROBINSON RES	DEER CK	11/01/03	20	05/05/04	23	21
58	3826	BAR BEE LAKE	BEAVER CK of MORRISON CK	11/01/03	75	06/01/04	81	76
58	3940	REED RESERVOIR	CHIMNEY CK	11/01/03	8	10/31/04	8	8
58	3943	GOOF UP PONDS	TRIBUTARIES-ELK R	06/28/04	6	10/31/04	8.3	8.3

Reservoir Storage Summary by District Water Year 2004

WD	ID	RESERVOIR	SOURCE STREAM	AMOUNT IN STORAGE (AF)				
				Date	Minimum AF	Maximum Date	AF	End of Year
58	4213	STAGECOACH RESERVOIR	YAMPA RIVER	03/09/04	27113	08/23/04	33130	32043
58	4240	YAMCOLO RES	BEAR RIVER	09/15/04	2362	05/08/04	7028	2456
58	4366	MAD RANCH POND	HOT SPRING CK	11/01/03	10	10/31/04	10	10
58	4376	STEAMBOAT WW RECL RES	TRIBUTARIES	10/31/04	38	11/01/03	45	38
58	4420	BROOKIE LAKE	WHEELER, LAKE CK	11/01/03	32	10/31/04	32	32
58	4455	RAFTOPOULOS JOUF RES 43	FARNESWORTH CK	11/01/03	0.3	05/31/04	1	0.3
58	4457	RAFTOPOULOS JOUF RES 45	FARNESWORTH CK	11/01/03	0	10/31/04	0	0
TOTAL FOR DISTRICT 58					69,593		93,074	79,781

**WATER DIVERSION SUMMARIES
WATER YEAR 2004**

WD	STRUCTURES REPORTING					EST. NO. OF VISITS TO DIVERSION STRUCTURES	TOTAL DIVERSIONS AF	TOTAL DIVERSIONS TO STORAGE AF	TOTAL DIVERSIONS TO IRRIGATION AF	NUMBER OF ACRES IRRIGATED	AVERAGE ACRE- FEET PER ACRE
	With Record Available	No Water Available	No Water Taken	No Info Available	Active Struct. w/No Record						
	1	2	3	4	5						
43	526	173	89	12	1,736	5,719	645,913	331	275,085	24,250	11.34
44	260	44	66	3	2,747	850	150,621	0	129,413	28,745	4.50
47	406	108	47	6	458	5,596	328,891	21,312	291,261	81,579	3.57
54	88	4	14	23	545	130	65,020	754	61,948	13,919	4.45
55	15	0	7	1	364	34	12,471	0	12,070	1,839	6.56
56	37	10	21	3	676	28	10,392	518	4,886	1,520	3.21
57	87	10	43	11	660	811	51,923	164	42,784	9,053	4.73
58	435	22	106	23	1,617	3,758	180,120	866	117,774	28,217	4.17
Total	1,854	371	393	82	8,803	16,926	1,445,351	23,945	935,221	189,122	4.95

- (1) Grouped by ID
- (2) Count of Structures with NUC = B
- (3) Count of Structures with NUC = A+C+D
- (4) Count of Structures with NUC = E+F
- (5) Count of Diversion Structures with CIU = U

**WATER DIVERSIONS TO VARIOUS USES
WATER YEAR 2004**

USES	WD 43	WD 44	WD 47	WD 54	WD 55	WD 56	WD 57	WD 58	TOTALS
TRANSMOUNTAIN OUT	0	0	2,855	0	0	0	0	0	2,855
TRANSBASIN OUT	0	0	0	0	0	0	0	1,874	1,874
MUNICIPAL	2,459	1,989	174	0	0	0	298	3,408	8,328
COMMERCIAL	363	1	0	0	0	181	0	14	559
INDUSTRIAL	2,876	16,608	1	0	0	0	3,030	595	23,110
RECREATION	514	0	0	0	0	0	0	3,831	4,345
FISHERY	45,301	440	676	1,642	0	0	1,695	6,191	55,945
DOMESTIC & HOUSEHOLD	2,045	24	5	30	0	48	117	802	3,071
LIVESTOCK	11,228	0	6,707	646	401	45	2,983	5,345	27,355
AUGMENTATION	0	0	0	0	0	0	0	0	0
EVAPORATION	0	0	0	0	0	0	0	0	0
GEOHERMAL	0	0	0	0	0	0	0	0	0
SNOWMAKING	0	0	0	0	0	0	0	252	252
MINIMUM STREAMFLOW	107	0	0	0	0	0	0	0	107
POWER GENERATION	305,604	0	0	0	0	0	0	30,748	336,352
WILDLIFE	0	0	0	0	0	4,714	0	0	4,714
RECHARGE	0	0	0	0	0	0	0	270	270
OTHER	0	2,146	6,703	0	0	0	852	1,950	11,651
ALL BENEFICIAL USES	0	0	0	0	0	0	0	6,200	6,200
TOTALS	370,497	21,208	17,121	2,318	401	4,988	8,975	61,480	486,988

TRANSMOUNTAIN DIVERSION SUMMARY - OUTFLOWS
WATER YEAR 2004

		SOURCE							RECIPIENT		
WD	ID	NAME	STREAM	10-YR AVG		CURRENT YEAR		WD	ID	STREAM	
				AF	DAYS	AF	DAYS				
47	4602	Cameron Pass Ditch	Michigan River	92	27	79	40	3		Poudre River	
47	4603	Michigan Ditch	Michigan River	4511	325	3019	320	3		Poudre River	
58	4630	Dome Creek Ditch	Dome Creek	204	73	94	66	50		Egeria Creek	
58	4684	Sarvis Ditch	Sarvis Creek	445	76	453	259	53		Muddy Creek	
58	4685	Stillwater Ditch	Bear River	2464	107	1327	120	53		Egeria Creek	

NO TRANSMOUNTAIN DIVERSION INFLOWS

RIVER CALLS – WATER YEAR 2004

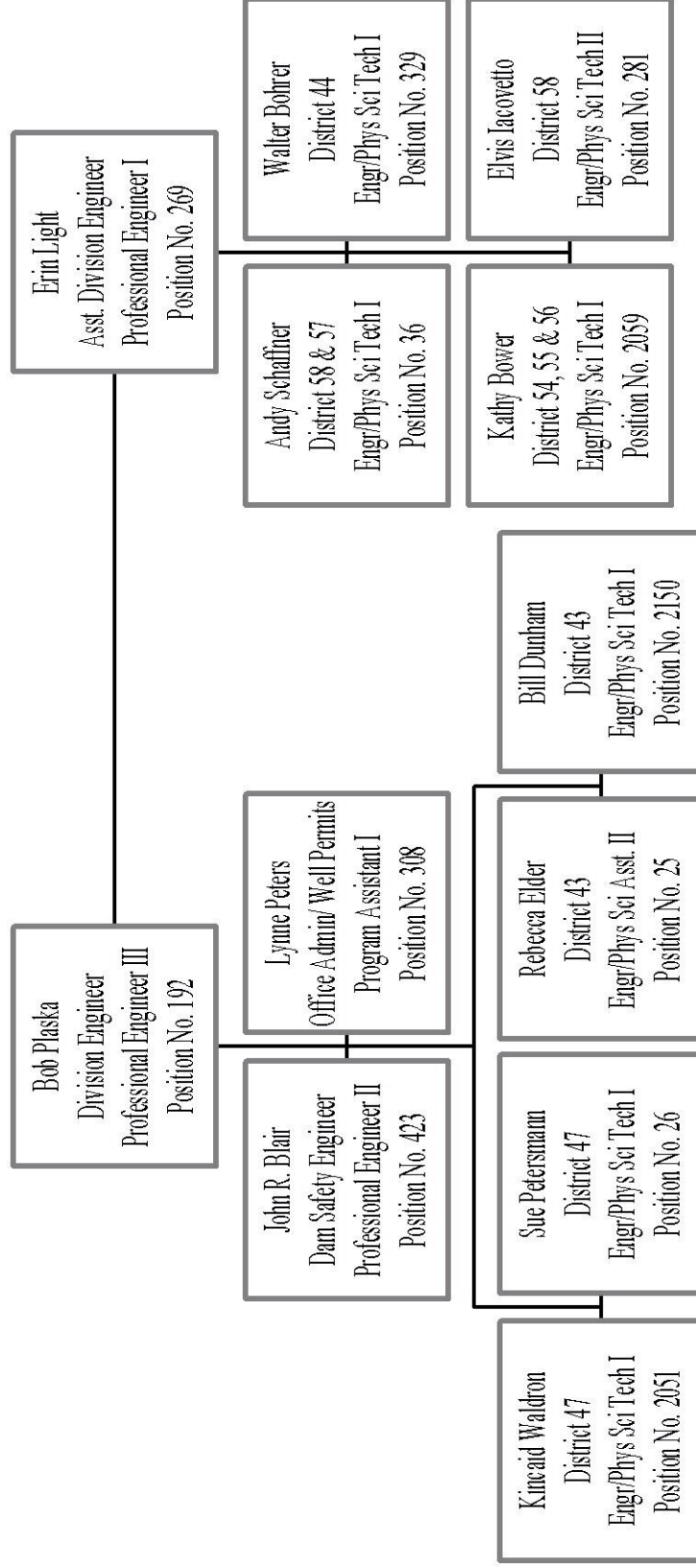
<u>WD</u>	<u>STREAM</u>	<u>CALLING STRUCTURE</u>	<u>CALLING PERSON</u>	<u>FIRST</u>	<u>LAST</u>	<u>ADMIN NO</u>
43	PICEANCE CREEK	METZ & REIGAN DITCH	BURKE BROS	05/09/04	10/31/04	12930.00000
43	PICEANCE CREEK	METZ DITCH	BURKE BROS	05/09/04	10/31/04	12755.00000
43	PICEANCE CREEK	SQUARE S CONSOLIDATED D	BOONE VAUGHN	05/07/04	10/31/04	12756.00000
43	PICEANCE CREEK	SQUARE S CONSOLIDATED D	BOONE VAUGHN	05/07/04	10/31/04	13270.00000
43	PICEANCE CREEK	SQUARE S CONSOLIDATED D	BOONE VAUGHN	05/07/04	09/18/04	13274.00000
43	PICEANCE CREEK	SQUARE S CONSOLIDATED D	BOONE VAUGHN	05/07/04	09/18/04	13509.00000
43	PICEANCE CREEK	RYAN DITCH	TIM MANTLE	05/17/04	10/05/04	12571.00000
43	PICEANCE CREEK	B M & H DITCH	TIM MANTLE	05/10/04	10/31/04	13583.00000
43	PICEANCE CREEK	MHM GERMAN CONS	LOV RANCH	05/12/04	10/31/04	12549.00000
43	PICEANCE CREEK	ROBERT MCKEE DITCH	PAT JOHNSON	04/04/04	10/31/04	13622.00000
43	PICEANCE CREEK	BELLOT & MOFFAT DITCH	PAT JOHNSON	04/04/04	10/31/04	13659.00000
43	PICEANCE CREEK	PICEANCE DITCH	OLDLAND BROS	04/30/04	10/31/04	13342.00000
43	PICEANCE CREEK	EMILY DITCH	OLDLAND BROS	05/07/04	10/31/04	13458.00000
43	PICEANCE CREEK	SCHUTTE DITCH	LARRY ROBINSON	03/23/04	10/31/04	12875.00000
43	PICEANCE CREEK	HOME DITCH	LARRY ROBINSON	03/23/04	10/31/04	12549.00000
44	FORTIFICATION CK	WISCONSIN DITCH	DON COOK	06/03/04	07/02/04	14109.00000
44	FORTIFICATION CK	LITTLE BEAR DITCH	DOUG CAMELLETTI	05/24/04	07/07/04	13797.00000
44	DEER CREEK	HIGHLINE DITCH	LARRY OSBORN	05/25/04	08/28/04	14020.00000
47	ILLINOIS RIVER	WALDEN RESERVOIR	CARL TRICK II	03/17/04	05/04/04	38187.00000
47	ILLINOIS RIVER	HOME #2 DITCH	KEN FOSHA	06/15/04	07/18/04	13658.00000
47	MICHIGAN & ILLINOIS	KIWA DITCH	TRICK, WILLFORD, SILVER	05/04/04	07/13/04	14063.00000
47	GOVERNMENT CREEK	COE #1, COE #2	SEAN MILLER	05/04/04	07/15/04	11860.00000
47	CANADIAN RIVER	NEW PIONEER DITCH	CARL TRICK II	05/06/04	07/01/04	15603.00000
47	PINKHAM CREEK	CAPRON DITCH	STATE LINE RANCHES	05/06/04	07/01/04	13686.00000
47	THREE MILE CREEK	THREE MILE DITCH	HANLON, JAMES	04/12/04	07/10/04	21366.20240
47	ROARING FORK	SUNDAY CREEK DITCH	IRVINE RANCHES	04/18/04	08/20/04	30280.24319
54	LITTLE SNAKE RIVER	TROWEL DITCH	RON TAYLOR	08/09/04	09/15/04	13255.00000
54	WILLOW CREEK	WILLOW CREEK DITCH	KIRK SHINER	07/02/04	09/15/04	16028.00000
57	WEST FISH CREEK	HIGHLAND DITCH	ANDY & JOHN PEROULIS	05/24/04	10/24/04	14501.00000
58	FARNESWORTH CREEK	CINDY'S POND	PETER DORAN	04/05/04	04/30/04	12198.00000
58	BEAR RIVER	FIX DITCH	JERRY SCHALNUS	05/03/04	07/17/04	12232.00000
58	BEAR RIVER	NICKELL DITCH	DEAN ROSSI	07/19/04	07/24/04	12232.00000
58	BEAR RIVER	BIRD DITCH	JOHN BERRY	07/25/04	07/29/04	12198.00000
58	BEAR RIVER	FIX DITCH	JERRY SCHALNUS	08/10/04	09/29/04	22071.19623
58	BEAR RIVER	STILLWATER DITCH	ANDY SCHAFFNER	05/18/04	09/17/04	14348.00000
58	NORTH HUNT CREEK	NORTH HUNT CREEK D	ZANE KOUTHAN	05/10/04	08/01/04	18529.13985
58	SOUTH HUNT CREEK	LAFON D & SNOW BANK D	KIM WINESTEIN	08/01/04	08/03/04	19997.18789
58	SOUTH HUNT CREEK	SNOW BANK	DEAN ROSSI	09/10/04	10/29/04	18529.23985
58	SOUTH HUNT CREEK	LAFON DITCH	KIM WINESTEIN	09/10/04	10/29/04	18529.23985
58	MIDDLE HUNT CREEK	SIMON	MARK ROSSI	05/07/04	08/12/04	14032.00000

WATER COURT ACTIVITIES Calendar Year 2004

	<u>Division 5</u>	<u>Division 6</u>
Applications	25	52
Consultations with Referee.....	25	84
Decrees Issued by Court for Water Rights.....	20	25
Dismissal/Denied/Withdrawn.....	2	6
Complaints.....	0	0
Change of Venue.....	0	0

<u>TYPE OF RULING</u>	<u>Division V Cases/Orders</u>	<u>Structures</u>	<u>Division VI Cases/Orders</u>	<u>Structures</u>
Findings of Diligence on Conditional Rights	8	28	3	3
Cancellations of Conditional Rights	2	2	2	2
Conditional Water Rights Made Absolute	2	5	3	3
Surface Water Rights Adjudicated	6	19	13	27
Underground Water Rights Adjudicated	0	0	2	6
Water Storage Rights Adjudicated	2	6	3	5
Plans for Augmentation Adjudicated	0	0	3	9
Exchanges	0	0	1	1
Changes of Water Rights Adjudicated	3	3	3	3
Instream Flow Rights Adjudicated	1	1	0	0
Abandonment List	0	0	0	0

Division 6 Organizational Chart



**2004 OFFICE ADMINISTRATION
and WORKLOAD MEASURES**

Professional and Technical Staff	3.0
Administrative Support Staff	1.0
Water Commissioners Assigned	6.0
Wells Permitted	127
Water Court Appearances.....	1
Water Referee Contacts.....	28
Meetings with Water Users.....	39
Meetings to Resolve Water Related Disputes.....	0
Contacts to Give Public Assistance on Water Rights	8772