

## Water Year 2000

### Water Administration

Division 6 suffered through one of the worst irrigation seasons in many years. While the spring runoff produced near normal stream flows, the duration of the runoff was considerably shorter than one would have liked. In addition, temperatures in April were above average and much of the low and medium elevation snowpack melted early, before irrigators could divert or use the water. Administration began early on many of the tributaries and lasted throughout the summer. When the rains finally came, they were too late to do any good for most of the irrigators.

Administration was the normal course of action throughout the Division this year. From Piceance Creek in the White River drainage to the Michigan River in North Park, all of the tributaries were either under administration, or only supplying water to the number one water right on the drainage. The situation was so drastic that the Little Snake River was administered under the provisions of the Upper Colorado River Compact for the first time since the compact was signed in 1948. The administration on the Little Snake was handled jointly by staff of the Colorado Division of Water Resources and the Wyoming State Engineer. The calls that occurred in the Districts and the structures that placed the call appear on Page 22.

Shown below is the data from the monthly snowpack reports published by the Natural Resources Conservation Service. This data shows how low the snowpack was throughout the Division in the early part of the winter. By March and April conditions had improved considerably giving hope for a normal runoff. However, April temperatures were more than 5 degrees above the long-term average resulting in early melting of the snowpack. By June 1<sup>st</sup> the runoff predictions were 85% of average for the Yampa River near Maybell; 65% of average for the White River near Meeker; 76% of average for the North Platte near Northgate, and only 60% of average for the Little Snake River near Lily.

### SNOWPACK AS PERCENT OF AVERAGE Water Year 2000

<u>River Drainage</u>	<u>Jan</u>	<u>Feb</u>	<u>Mar</u>	<u>Apr</u>	<u>May</u>
North Platte	69	90	107	107	97
Yampa	68	91	104	104	78
Little Snake	63	79	92	92	68
White	59	82	93	93	78

Adding to the severity of the lower than normal runoff was the lack of moisture during the summer. In a normal year, precipitation in the summer can offset a low runoff from snowmelt. This year, the summer precipitation in June and July was well below normal, with most of the rainfall coming in a few heavy precipitation events. By the time a more normal rainfall pattern began to appear in late August and September, it was too little, too late. The table below shows the monthly totals for precipitation for selected sites in the Division. This data was compiled from climatological data published by the National Oceanic and Atmospheric Administration.

**Monthly Precipitation Data for Selected Sites**  
**Water Year 2000**  
(Inches)

<u>Site</u>	<u>Oct</u>	<u>Nov</u>	<u>Dec</u>	<u>Jan</u>	<u>Feb</u>	<u>Mar</u>	<u>Apr</u>	<u>May</u>	<u>Jun</u>	<u>Jul</u>	<u>Aug</u>	<u>Sep</u>	<u>Total</u>	<u>Annual Avg (61-90)</u>	<u>% of Avg</u>
Meeker	0.74	0.58	1.21	0.93	0.98	1.39	1.14	1.27	1.30	0.53	2.03	1.90	14.00	14.91	94
Steamboat	0.39	0.97	1.84	3.17	3.07	1.21	1.72	1.70	0.73	0.71	1.56	2.51	19.58	23.51	83
Walden	0.23	0.54	0.56	0.52	1.33	0.74	1.38	1.20	0.60	0.55	2.32	1.57	11.54	10.61	109

When the total runoff for the water year is considered, it is evident that the magnitude of the drought was severe. Listed below are the total flow records for Water Year 2000 for the gages located at the lower end of each major river in the Division. The long-term averages are based on the period of record for the gages. This data was obtained from the US Geological Survey.

<u>Station Name</u>	<u>Water Year 00</u>	<u>Long Term Average</u>	<u>% of Average</u>
White River near Meeker	553,000	581,500	75
Little Snake River at Lily	295,900	420,000	70
Yampa River near Maybell	927,300	1,141,000	81
North Platte near Northgate	225,600	315,800	71

In addition to the administration of the decreed water rights within the Division, the office is also responsible for the following compacts and U.S. Supreme Court Decrees:

**Upper Colorado River Compact**

Under Article XIII (a), The State of Colorado will not cause the flow of the Yampa River at the Maybell gage to be depleted below an aggregate amount of 5,000,000 acre feet for any period of ten consecutive years. For the period 1991 to 2000, the aggregate flow at the Maybell gage was 11,901,100 acre-feet.

As mentioned previously, the Little Snake River was administered this summer under the conditions of the compact. While there was no formal call placed on the system by any one ditch, the flow conditions in the area around Baggs, Wyoming were so low that a joint decision was made to administer the river under the compact. Personnel from our office and the Wyoming State Engineer's Office regulated the distribution of water to the ditches covered by the compact from August 1 through the remainder of the irrigation season. This was the first time in history that the river was administered under the provision of the Upper Colorado River Compact.

**North Platte River ( Nebraska v. Wyoming, U.S. Supreme Court Decree)**

Under this decree, Colorado is limited to a total of 145,000 acres of irrigation in the North Platte drainage, storage of no more than 17,000 acre-feet per year for irrigation purposes and no more than 60,000 acre-feet of transmountain diversions from the basin in any period of ten consecutive years. In water year 2000, a total of 112,624 acres were reported irrigated and a total of about 7134 acre-feet of storage for irrigation occurred. The ten-year total of transmountain diversions out of the basin was 48,518 acre-feet. None of the limitations in the Supreme Court Decree were exceeded in 2000.

educating people about the statutes concerning the use of groundwater in Colorado. As residential development continues in the Division, this will become a greater part of staff time dedicated to public assistance.

We hope that in the near future the Division office will be able to access the imaged well permit files that are now available to the Denver Office staff. We often have occasion to retrieve data from the permit files and it would be extremely helpful to view and print these documents over the DWR intranet.

There have been very preliminary discussions about the possibilities of decentralizing non-exempt well permitting activities to the Division 6 office. The Assistant State Engineer recommends we present a proposal for his consideration of how this would be accomplished. We hope to present our proposal in 2001 for his review. Because of the low volume of non-exempt well permits that have been issued in the past, we believe it may be feasible to decentralize this well permitting function to the Division office. This would result in a shorter turn around time on issuance of the permits and improved customer service.

## Water Records and Information

A summary of our diversion records for Water Year 2000 are on Pages 19 and 20 of this report. A review of these tables reveals some interesting information. While suffering through a very dry year, the total diversions reported for the entire Division actually increased by close to 138,000 acre feet, while the total diversions for irrigation increased by 33,100 acre feet. These increases result mainly from two factors; increased diversions for power generation and increased irrigation diversions in District 43. While irrigation use in District 43 has been fairly constant in the past few years, the reported increase in diversions for irrigation are attributed to more frequent visits by the water commissioners this year, resulting in better records. As seen on Page 19, the total number of estimated visits to structures in the Division was just over 17,000, a 24% increase from the previous year.

We continue to keep our databases updated for use in Qinfo. Besides including the latest diversion records; ownership, decreed water rights, well, dam and structure information is updated on a regular basis and distributed to all of our commissioners. Access to this information through the Qinfo program remains our primary method of responding to inquiries from the public. Until such time as data entry tools are available through Hydrobase, we will continue to use Qinfo. However, we are starting to review our databases to identify what additional data will be required to conform to the Hydrobase structure.

An additional feature that was added to Qinfo this year was access to scanned images of the ditch cards that were historically maintained in the office. These cards tracked decrees and transfers associated with the various ditches and reservoirs in the districts. These cards were scanned, stored on our server and linked with the Qinfo program. It is now possible to call up these images while viewing data for a structure.

This year we started using GPS units to locate the position of ditches and reservoirs. Each of our water commissioners received a Garmin hand-held GPS unit and computer software. Elementary training was given in the operation of the units to allow the commissioners to start verifying the locations of the major structures in their district. The data that has been collected has been transferred to the Division for inclusion in our database. We hope to increase our use of these tools to obtain better data on the actual location of all active structures in the Division.

As an on-going effort since 1976, we continue to calculate an annual water budget for the various drainages within the division. Using data from two lysimeter sites, consumptive use is calculated for the various drainage basins. This year we relocated the lysimeter site from Lake

Catamount to the Arapaho National Wildlife Refuge in North Park. This location will be operated jointly by our staff and the Refuge. We hope that by relocating this lysimeter to North Park we will get better data on actual consumptive use for this area. This year's water budget report is not available at this time, but will be provided as an appendix to this report when completed.

## **Water Court Cases**

**W**ater Court activity in Division 6 was down slightly this year. There were 86 cases filed in Division 6 and 19 in Division 5 Water Court. The Division 5 Water Court is responsible for the adjudication of all water rights tributary to the White River drainage. The Courts decreed a total of 81 cases and the Division Engineer prepared 108 Summaries of Consultation this year. A summary of the Court activities is on Page 23 at the end of this report.

In July, the proposed 2000 Abandonment List was published in the various county newspapers. Notification of the abandonment was also sent by certified mail to the last owner of record. Our office received only five protests by the end of the calendar year. This number is expected to increase before the protest period ends at the end of June 2001.

There were no trials conducted in either water court this year. One case involving the Upper Yampa Water Conservancy District was settled on the morning of the trial date.

While the number of cases has been relatively constant over the last several years, they are becoming more complicated. Augmentation plans and exchanges are appearing on a regular basis in both of the Water Court venues. This has resulted in an increase in the amount of time the Division Engineer spends on consultations and discussions with attorneys.

## **Involvement in the Water User Community**

**T**he Division staff continue their assistance to the public in preparing water court and well permit applications, and providing water right and diversion information. We continue to provide assistance to dam owners with completing Emergency Preparedness Plans and to water users with the proper selection and installation of water measuring devices. The time required to perform these customer service duties seems to increase each year as new residents move into the area that are unaware of the requirements for obtaining water rights, wells permits, and constructing ponds and reservoirs.

Division staff continues to attend as many of the regularly scheduled meetings of the Conservation and Conservancy Districts as possible. This past year, two of the Colorado River Water Conservation District quarterly meetings were missed due to scheduling conflicts with the agency's leadership team meetings in Denver. Because of our small office staff we were unable to cover both meetings. Staff has attended numerous ditch and reservoir meetings throughout the year.

Several meetings were held throughout the year in conjunction with the Yampa River Basin Management Plan. These meetings focused on the issues concerning completion of the Programmatic Biological Opinion process for the Yampa River basin. The Division Engineer attended several meetings of the Water Subcommittee to deal with specific issues of future depletions and administration. The process culminated in a two day facilitated meeting held this past fall in Craig to obtain consensus on the major issues in the Management Plan. The plan is due for release to the public for comments in the spring of 2001.

Water Commissioners Elvis Iacovetto and Andy Schaffner continued their involvement with bringing "water awareness" to the students of the South Routt County High School. Under this

program they demonstrate techniques for measuring stream flows and discuss water administration issues. The Division Engineer assisted students at Steamboat High School in gathering information on water rights and well permits for a class project dealing with a proposed new wildlife management area located in Steamboat.

The table on page 25 summarizes these activities.

## Issues and Achievements

The main issue pending in the Division is the finalization of the Yampa River Basin Management Plan. The U.S. Fish and Wildlife Service (USFWS) will use this plan to draft their Programmatic Biological Opinion for the basin. Started over a year ago, the plan was originally scheduled for completion in August 2000. That date has been delayed to the spring of 2001. The main reason for the delay is to gain consensus on the amount of future depletion in the basin that the plan covers. As originally presented to the water users, that carve out would be 50,000 acre-feet of future consumptive use. After much analysis and computer modeling by the Colorado Water Conservation Board, the projected future depletions through 2045 were estimated to be about 30,000-acre feet. This difference led to lengthy discussions regarding the assumptions used in the model and the future growth projections. It appears that the final report will recommend a two-tiered approach to address future depletions. The first level would include 30,000 acre-feet of additional consumptive use with a second increment to be determined once the first increment is developed. The USFWS will address these proposals when they draft their Biological Opinion for the Yampa Basin.

The Yampa River Hayden Project, sponsored by the Upper Yampa Water Conservancy District, continues to move forward. This project will consolidate four ditches in the Hayden area into one or two combined headgates, thus eliminating several gravel dams on the mainstem of the Yampa River. This past year, the U.S. Army Corps of Engineers visited the site to determine if the project falls within their jurisdiction. Subsequently, the Corps received funding in the amount of \$300,000 to conduct a feasibility study of the proposed project. This study will begin this summer and is anticipated to take two years.

The continued proliferation of ponds for recreation and piscatorial use is becoming an ever-increasing problem as they are often constructed before we ever hear about them. Many ponds are constructed on small intermittent drainages that have never been subject to administration, thus giving us little reason to challenge their construction. However, as several ponds are constructed on the same drainage the natural flow regime is being markedly altered. Since most of these ponds have no way to pass inflow except through the spillways, less water is delivered downstream because of increased evaporative losses. An associated problem is the quality of construction of the dams forming these ponds. We are attempting to make people aware that at the very least, they need to file a Notice of Intent to Construct a Non-Jurisdictional Water Impoundment Structure with our office as required by State statute.

We continue to struggle with operating budget and staffing issues. This year our operating budget was increased by \$1200, for which we are extremely grateful. However, this increase was overshadowed by the increases in lease vehicle mileage rates and travel due to the dry summer. Being the smallest Division in the state our fixed costs are relatively high, leaving little in the way of discretionary funds. Our situation this year was exacerbated by the additional mileage caused by the drought, but even in a normal year we struggle to stay within our budget. The hiring of new Water Commissioners further compounds this situation, as they will be required to travel more in order to learn their Districts, and have historically continued to drive more miles than their predecessors. At the end of this calendar year driving restrictions were placed on all staff to preserve as much of our operating budget as possible for use in the second half of the fiscal year.

With respect to staffing, over the last decade the Division has lost two full-time positions, and part-time man-hours have been juggled to provide service where needed the most. Some of our part-time personnel have barely enough time assigned to perform their duties in a normal year, let alone a dry year with increased administration. These employees have an extremely difficult time using their annual leave and often end up losing hours as they reach the mandatory cap. We hope to be able to address this issue by submitting a request for additional staffing time as part of a decision item for fiscal year 2003.

Some of the accomplishments achieved this past year include the following:

- The 2000 abandonment list was compiled and owners notified within the statutory time limits.
- The 2000 tabulation was completed.
- GPS units and plotting software was distributed to each Water Commissioner with basic training provided by the Division Office.
- Historic ditch cards were scanned and linked to Qinfo for use by all staff.
- All scheduled dam inspections were completed.
- Diversion records were compiled and finalized in a timely manner.
- Consultations to the Water Court were submitted on a timely manner and kept pace with the flow of new applications.
- Exempt well permits were issued within our 10-day issuance policy, with only a few exceptions.

## **Workload and Personnel**

**D**ivision 6 had one change in personnel this year. After 29 years with the State, Kent Holt retired in early September. Kent served as hydrographer for the Division as well as the coordinator of our databases for water rights and diversion records. Kent authored the Qinfo program that we use to access all of the information on water rights, ownership, wells, dams and diversion records. With Kent's retirement job duties were spread out among Andy Schaffner, Elvis Iacovetto, Sally Lewis and the Division Engineer. This position still remains vacant.

Jack Leonard has announced his intentions to retire in June of 2001. We hope to be able to hire his replacement before his scheduled retirement so that the new employee can receive some on-the-job training. Jack's areas of responsibility are Water Districts 54, 55 and 56, covering the entire drainage of the Little Snake River.

The Water Commissioner of the Year for 2000 is Sue Petersmann. In only her second year of service, Sue successfully managed the administration of the Michigan and Illinois River systems in North Park in a very difficult year. Given the extremely dry conditions this year, the task of handling this area was especially challenging. In addition to the dry conditions, it was also the first year that Sue was responsible for the Michigan River system. She did an extremely fine job of learning the Michigan system, administering her District, and responding to inquiries from the public.

The administrative duties in Water District 47 were officially divided this year between the two commissioners, Kincaid Waldron and Sue Petersmann. Each commissioner is now in charge of their own area, subject to assisting each other in emergency situations. This division of the district was undertaken to provide the water users with a clear definition of whom they should be contacting with problems or inquiries. It also resolved some confusion over responsibilities within the District. A result of this division is that each commissioner is totally responsible for their own area and performance evaluations will be based solely on individual

accomplishments.

Our Dam Safety Engineer, Sally Lewis, continued to perform her inspection duties under a plan put in place two years ago to accommodate her knee problems. Under this plan, the Division Engineer participates in the inspection of Class 1 dams, to reduce the amount of physical activity that Sally needs to perform on these inspections. Despite the success of this program, it was obvious that Sally's knee was continuing to deteriorate. By the end of the inspection season it was apparent that she would require additional surgery. She has scheduled this surgery for early 2001. As this will affect our inspection program for next year, we will coordinate with Denver's Dam Safety Branch to outline a course of action to insure the completion of inspections on critical dams in a timely manner.

This year pointed out the lack of resources available to the Division in non-normal conditions. Because of the dry conditions and early runoff, many tributaries went under administration early and stayed under administration throughout the irrigation season. This situation resulted in additional time spent in the field by part-time staff, and in additional mileage. Hopefully additional money will be available for personnel services in the spring of 2001 to allow the field staff sufficient time to perform their duties for the remainder of the fiscal year without restrictions.

Preparation for the 2000 abandonment also affected our workload this year. All of the Water Commissioners spent time in the winter and spring preparing lists of proposed water rights to be abandoned. These lists were reviewed and compiled into the Division 6 Proposed Abandonment List. In addition to this additional office work, the commissioners performed field inspections on many of the structures proposed for abandonment.

The Division Engineer wishes to acknowledge the efforts of the staff of Division 6 in this very dry year. They all performed their jobs in a professional manner, regardless of the circumstances. I am extremely proud of their dedication and willingness to do what is necessary to get the job done.

An organizational chart for Division 6 is located on Page 24 of this report.

## Training

We continue to encourage staff participation in training opportunities. Training in 2000 was provided from various sources. Several employees attended training sessions as follows.

- Lynne Peters attended the annual Program Assistants training meeting in Ouray, as well as training in Denver on issuing well permits with the new Well Evaluation Tool Kit.
- Sally Lewis attended the annual Dam Safety training meeting.
- Elvis Iacovetto, Bill Dunham, Andy Schaffner, Sally Lewis, Kincaid Waldron and Jack Leonard attended the annual CWOA meeting in Denver.
- Elvis Iacovetto attended Hydrographic training in Silver Creek
- Individual training was given to each Water Commission on the use of the Garmin GPS units.
- Individual training was given to each Water Commissioner on the use of the Topo! software for use in plotting GPS data.
- Sally Lewis provided a refresher course on dam safety to all Water Commissioners at the Spring meeting.

Looking forward to 2001, we hope to provide additional training in the use of Office 97, Topo! and data collection with GPS units. Training in these areas will be coordinated with Denver staff

where appropriate. We also anticipate that our new employees will be involved in extensive training activities in the coming year.

## WATER YEAR 2001

### Key Objectives for 2001

As we begin the new year, there are several objectives that we hope to accomplish. Our key objectives for the year are listed below:

- Participate in the finalization of the Yampa River Basin Management Plan.
- Resolve all protests to the 2000 Proposed Abandonment List and submit the Revised Abandonment List to the Water Court.
- Hire new employees to replace the positions vacated by the retirement of Kent Holt and Jack Leonard.
- Provide training to the new employees hired by the Division.
- Provide additional training to all field staff on the proper use of the GPS units and continue to collect location information on all major structures in the Division.
- Submit a proposal to Denver for the decentralization of non-exempt well permitting activities to the Division 6 office.
- If requested by the Colorado water right owners, evaluate the decrees and operation of reservoirs in Utah that are associated with the Pot Creek Agreement.
- Review and revise the water rights listing for the Little Snake River. In cooperation with the State of Wyoming prepare a combined list for submission to the Upper Colorado River Compact Commission.
- Strive to operate within our allocated budget.
- Work with the Denver Dam Safety Branch to develop a plan for inspecting critical dams, considering the possibility that the Division's Dam Safety Engineer will be unable to perform any fieldwork this summer.
- Review our existing databases to identify potential problems that might be encountered during the forthcoming conversion to Hydrobase. Develop a plan of action to address these problems.
- Submit justification to the State Engineer for additional staff and operating funds to allow the Division to perform our duties, and provide an acceptable level of public service.



## RESERVOIR STORAGE SUMMARIES BY DISTRICT

WD	ID	RESERVOIR	SOURCE STREAM	AMOUNT IN STORAGE (AF)						End of Year
				Minimum		Maximum		Date	AF	
				Date	AF	Date	AF			
43	4308	THEOS RES 1	COAL CK	04/05/00	51	04/05/00	51	04/05/00	51	51
43	4320	JENSEN RES 1	CURTIS CK	04/03/00	19	04/03/00	19	04/03/00	19	19
43	4433	TAYLOR DRAW RES	WHITE RIVER	11/01/99	13800	11/01/99	13800	11/01/99	13800	13800
43	4446	JOHNSON POND 15	TRIBUTARIES-PICEANCE CK	04/20/00	1	05/09/00	2	05/09/00	2	1
43	4463	VANDIVER POND	TRIBUTARIES-NORTH FK	04/12/00	25	04/12/00	25	04/12/00	25	25
43	4497	BLUE MOUNTAIN RES	WOLF CK	08/08/00	2	04/16/00	68	04/16/00	68	3
43	4499	REEVES RES	WOLF CK	08/31/00	20	04/16/00	34	04/16/00	34	20
43	4504	TAYLOR RES	HUNTER CK	05/05/00	81	05/05/00	81	05/05/00	81	81
TOTAL FOR DISTRICT 43				23862		23862	24855		23882	
44	3504	SULLIVAN RES LOWER	CEDAR CK	05/12/00	0	08/10/00	12	08/10/00	12	12
44	3673	WADDLE CK RES	WADDLE CK	04/28/00	40	04/28/00	40	04/28/00	40	40
44	3674	WILSON RESERVOIR	GOOD SPRING CK	06/06/00	51	04/27/00	68	04/27/00	68	61
44	3675	WYMAN RES	LITTLE BEAVER CK	07/13/00	30	04/27/00	64	04/27/00	64	30
44	3677	ANDERSON RES	NORTH FK of ELKHEAD CK	10/15/00	0	05/03/00	128	05/03/00	128	0
44	3681	BUNKER LAKE RES	BUNKER CK	08/23/00	133	06/09/00	191	06/09/00	191	133
44	3682	COVE LAKE RES	MORAPOS CK	05/17/00	49	06/07/00	75	06/07/00	75	62
44	3683	COVE RES	MORAPOS CK	09/27/00	45	05/17/00	115	05/17/00	115	45
44	3686	DRESCHER RES	BASIN GULCH	07/14/00	130	04/21/00	201	04/21/00	201	130
44	3688	DUNKLEY DEUBEAU RES	WILLOW CK	05/24/00	50	05/24/00	50	05/24/00	50	50
44	3689	D & E RES	MILK CK	10/06/00	16	06/19/00	1509	06/19/00	1509	16
44	3695	LEFTWICH RES	BOONE CK	10/20/00	32	04/14/00	36	04/14/00	36	32
44	3701	POOSE CK RES	POOSE CK	05/24/00	280	05/24/00	280	05/24/00	280	280
44	3702	ROBY RES	MORAPOS CK	09/27/00	13	05/17/00	26	05/17/00	26	13
44	3706	SELLERS CROWELL RES	WILLOW CK	08/23/00	0	05/24/00	31	05/24/00	31	0
44	3721	ELLGEN RESERVOIR	BELL ROCK GULCH	09/12/00	0	04/17/00	69	04/17/00	69	0
44	3723	B & B RESERVOIR	FLUME GULCH	04/21/00	22	04/21/00	22	04/21/00	22	22
44	3736	CULVERWELL RESERVOIR	SAND SPRING GULCH	05/30/00	97	05/30/00	97	05/30/00	97	97
44	3738	FREEMAN RESERVOIR	LITTLE COTTONWOOD CK	08/07/00	104	05/15/00	120	05/15/00	120	104
44	3739	SHAFFER RESERVOIR	WILLOW CK	08/23/00	0	05/24/00	31	05/24/00	31	0
44	3790	SADDLE RES	BUTLER CK	07/21/00	137	05/24/00	140	05/24/00	140	137
44	3824	BISKUP RESERVOIR	TWO SPRINGS GULCH	09/25/00	17	04/21/00	52	04/21/00	52	17
44	3902	ELKHEAD RESERVOIR	ELKHEAD CK	10/07/00	13396	04/14/00	13574	04/14/00	13574	13396
44	3925	FLAT TOP RES	SECOND CK	07/21/00	100	05/24/00	105	05/24/00	105	100
44	4051	CHESNUT RES NO 2	TRIBUTARIES-EAST FK	06/09/00	10	06/09/00	10	06/09/00	10	10
44	4381	PEARCE RES	TRIBUTARIES	05/05/00	50	05/05/00	50	05/05/00	50	50

# RESERVOIR STORAGE SUMMARIES BY DISTRICT

WD	ID	RESERVOIR	SOURCE STREAM	AMOUNT IN STORAGE (AF)					
				Minimum		Maximum		End of Year	
				Date	AF	Date	AF		
44	4436	ROBB PIT	TRIBUTARIES	05/17/00	807	05/17/00	807	807	807
44	4453	LOUDY RESERVOIR	TRIBUTARIES	09/14/00	47	04/27/00	50	47	47
			TOTAL FOR DISTRICT 44		16210		18507		16245
47	3523	ABRAHAM POND	TRIBUTARIES-ILLINOIS R	04/26/00	15	05/25/00	20	20	20
47	3528	ANTELOPE POND	TRIBUTARIES-ILLINOIS R	10/31/00	30	04/26/00	77	77	30
47	3529	BREWER POND	TRIBUTARIES-ILLINOIS R	03/28/00	34	04/18/00	51	51	51
47	3530	ELK POND	TRIBUTARIES-ILLINOIS R	03/28/00	0	04/26/00	9	9	0
47	3531	POTTER CREEK POND	TRIBUTARIES-ILLINOIS R	10/04/00	0	04/26/00	111	111	0
47	3532	SEVENTY SIX POND	TRIBUTARIES-ILLINOIS R	03/28/00	42	04/26/00	46	46	46
47	3533	WILSON POND	TRIBUTARIES-ILLINOIS R	10/04/00	0	03/28/00	14	14	2
47	3534	ALKALI POND	POTTER CK	07/26/00	16	04/26/00	22	22	16
47	3535	ALLARD CONTOUR, MID POND	TRIBUTARIES-ILLINOIS R	10/25/00	0	04/11/00	6	6	0
47	3536	ALLARD CONTOUR N. POND	TRIBUTARIES-ILLINOIS R	10/25/00	0	04/11/00	4	4	0
47	3537	ALLARD POND, NORTH	TRIBUTARIES-ILLINOIS R	10/25/00	0	04/11/00	38	38	0
47	3538	ALLARD COUNTOUR, S. POND	TRIBUTARIES-ILLINOIS R	10/25/00	0	10/25/00	0	0	0
47	3539	ALLARD POND, SOUTH	TRIBUTARIES-ILLINOIS R	10/25/00	0	04/26/00	48	48	0
47	3540	ANDERSON CONTOUR POND	TRIBUTARIES-ILLINOIS R	10/25/00	0	05/09/00	4	4	0
47	3541	ANDERSON DRAIN	ILLINOIS RIVER	10/25/00	0	05/09/00	3	3	0
47	3542	AVOCET POND	TRIBUTARIES-ILLINOIS R	10/31/00	0	04/26/00	12	12	0
47	3543	BIRDIE POND	TRIBUTARIES-ILLINOIS R	04/14/00	7	04/14/00	7	7	7
47	3544	BLUEBILL POND	TRIBUTARIES-ILLINOIS R	03/28/00	16	04/18/00	19	19	19
47	3545	BROCKER POND NORTH	TRIBUTARIES-ILLINOIS R	03/25/00	0	03/25/00	0	0	0
47	3546	BUDDIES POND	TRIBUTARIES-ILLINOIS R	10/04/00	0	04/26/00	15	15	0
47	3547	BULRUSH POND	TRIBUTARIES-ILLINOIS R	10/31/00	0	04/26/00	16	16	0
47	3548	CASE RES #2 ANNEX POND	TRIBUTARIES-ILLINOIS R	03/28/00	13	03/28/00	13	13	13
47	3549	CATTAIL POND	TRIBUTARIES-ILLINOIS R	10/04/00	0	04/26/00	9	9	0
47	3550	COYOTE POND	TRIBUTARIES-ILLINOIS R	10/26/00	0	04/14/00	2	2	0
47	3551	DIVERSION POND	TRIBUTARIES-ILLINOIS R	04/26/00	0	04/26/00	0	0	0
47	3552	EAGLE POND	TRIBUTARIES-ILLINOIS R	03/28/00	0	03/28/00	0	0	0
47	3553	EISEMANN POND	TRIBUTARIES-ILLINOIS R	04/26/00	0	03/28/00	11	11	0
47	3554	FISH HATCHERY POND, EAST	TRIBUTARIES-ILLINOIS R	04/18/00	6	04/18/00	6	6	6
47	3555	FISH HATCHERY POND WEST	POTTER CK	03/28/00	0	07/26/00	2	2	1
47	3556	FISHERMAN'S PARKING POND	TRIBUTARIES-ILLINOIS R	10/25/00	0	05/09/00	1	1	0
47	3557	FOLLETT POND	TRIBUTARIES-ILLINOIS R	10/31/00	8	04/26/00	10	10	8
47	3558	FOX POND	SPRING CK	10/31/00	40	04/11/00	108	108	40

RESERVOIR STORAGE SUMMARIES BY DISTRICT

WD	ID	RESERVOIR	SOURCE STREAM	AMOUNT IN STORAGE (AF)						End of Year
				Minimum		Maximum		Date	AF	
				Date	AF	Date	AF			
47	3559	GERM POND	TRIBUTARIES-ILLINOIS R	05/25/00	28	05/25/00	28	28	28	
47	3560	GOOSE POND	TRIBUTARIES-ILLINOIS R	07/17/00	41	04/26/00	49	41	41	
47	3561	GREASEWOOD POND	TRIBUTARIES-ILLINOIS R	03/28/00	0	03/28/00	0	0	0	
47	3562	HAMPTON NO 1 POND	TRIBUTARIES-ILLINOIS R	10/25/00	0	10/25/00	0	0	0	
47	3563	HAMPTON NO 2 POND	TRIBUTARIES-ILLINOIS R	03/28/00	0	10/25/00	8	8	8	
47	3564	HAMPTON NO 3 POND	TRIBUTARIES-ILLINOIS R	10/25/00	6	03/28/00	8	6	6	
47	3565	HOME POND	TRIBUTARIES-ILLINOIS R	09/11/00	0	04/26/00	52	44	44	
47	3566	HORSESHOE POND	TRIBUTARIES-ILLINOIS R	07/26/00	2	04/18/00	2	2	2	
47	3567	KITCHEN POND	TRIBUTARIES-ILLINOIS R	03/28/00	9	03/28/00	9	9	9	
47	3568	LIVING ROOM POND	TRIBUTARIES-ILLINOIS R	10/04/00	0	07/17/00	6	0	0	
47	3569	MARSH POND	ANTELOPE CK	07/17/00	0	04/26/00	6	0	0	
47	3570	MCCAMMON POND NORTH	TRIBUTARIES-ILLINOIS R	10/31/00	0	04/11/00	8	0	0	
47	3571	MCCAMMON POND SOUTH	TRIBUTARIES-ILLINOIS R	10/31/00	0	04/11/00	41	0	0	
47	3572	N. TOUR ROUTE POND	TRIBUTARIES-ILLINOIS R	10/04/00	0	04/26/00	10	0	0	
47	3573	OLD ROAD POND	TRIBUTARIES-ILLINOIS R	04/26/00	3	04/26/00	3	3	3	
47	3574	ONE TWENTY FIVE POND	TRIBUTARIES-ILLINOIS R	05/09/00	17	05/09/00	17	17	17	
47	3575	PATTEN POND	TRIBUTARIES-ILLINOIS R	10/26/00	0	03/28/00	7	0	0	
47	3576	POTHOLE POND	TRIBUTARIES-ILLINOIS R	10/25/00	0	05/09/00	7	0	0	
47	3577	PRAIRIE DOG POND	ANTELOPE CK	10/26/00	0	05/25/00	18	0	0	
47	3578	RAT DITCH POND	TRIBUTARIES-ILLINOIS R	04/26/00	5	04/26/00	5	5	5	
47	3579	RIZOR POND	TRIBUTARIES-ILLINOIS R	04/26/00	9	04/26/00	9	9	9	
47	3580	ROADSIDE POND NORTH	TRIBUTARIES-ILLINOIS R	10/04/00	0	04/26/00	4	0	0	
47	3581	ROADSIDE POND SOUTH	TRIBUTARIES-ILLINOIS R	10/04/00	0	04/26/00	6	0	0	
47	3582	ROSS POND	POTTER CK	05/25/00	5	05/25/00	5	5	5	
47	3583	SCHOOL POND NORTH	TRIBUTARIES-ILLINOIS R	10/25/00	0	10/25/00	0	0	0	
47	3584	SCHOOL POND SOUTH	TRIBUTARIES-ILLINOIS R	10/25/00	0	10/25/00	0	0	0	
47	3586	SOLBERG POND	TRIBUTARIES-ILLINOIS R	10/30/00	0	04/14/00	11	0	0	
47	3587	SOUTH TOUR ROUTE POND	TRIBUTARIES-ILLINOIS R	07/17/00	0	04/26/00	1	0	0	
47	3588	SPRING CREEK POND	SPRING CK	10/25/00	0	04/11/00	63	0	0	
47	3589	VARNEY POND	TRIBUTARIES-ILLINOIS R	05/09/00	21	05/09/00	21	21	21	
47	3590	WILLFORD POND	TRIBUTARIES-ILLINOIS R	04/11/00	0	04/27/00	25	0	0	
47	3595	BIG CREEK RESERVOIR	SOUTH FK of BIG CK	10/06/00	331	11/10/99	1434	331	331	
47	3597	BUFFALO RES	BUFFALO CK	07/06/00	391	08/07/00	455	439	439	
47	3598	BUTTE RES	TRIBUTARIES	09/26/00	101	04/20/00	646	543	543	
47	3599	CARLSTROM RES	MICHIGAN RIVER	10/10/00	264	04/10/00	530	530	530	
47	3600	CASE RES NO 1	ANTELOPE CK	10/30/00	30	06/11/00	74	30	30	
47	3601	CASE RES NO 2	POTTER CK	10/04/00	0	04/26/00	98	0	0	
47	3602	CASE RES NO 3	POTTER CK	07/26/00	25	10/04/00	66	66	66	

### RESERVOIR STORAGE SUMMARIES BY DISTRICT

WD	ID	RESERVOIR	SOURCE STREAM	AMOUNT IN STORAGE (AF)						End of Year
				Minimum		Maximum		Date	AF	
				Date	AF	Date	AF			
57	3560	EMRICH RES	TEMPLE GULCH	11/01/99	0	03/31/00	75	0	0	
57	3564	GREASEWOOD FLAT RES	DILL GULCH	10/27/00	5	11/01/99	6	5	5	
57	3571	JAMES MARION YOAST RES	YOAST GULCH	09/14/00	1	06/01/00	202	19	19	
57	3582	SEATON RES	MIDDLE FISH CK	11/01/99	0	06/01/00	21	1	1	
57	3583	SHERIFF RES	TROUT CK	11/01/99	370	06/08/00	987	987	987	
57	3585	WHETSTONE RES	WHETSTONE CK	11/01/99	1	05/23/00	15	5	5	
57	3587	YOAST RESERVOIR 1	YOAST GULCH	11/01/99	1	05/15/00	11	1	1	
57	3612	HOPE POND	TRIBUTARIES-TROUT CK	11/01/99	1	05/01/00	2	1	1	
57	3761	EAST OF MINE SHOP IMPND	GRASSY CK	10/31/00	7	11/01/99	9	7	7	
57	3772	KOWACH RESERVOIR 1	BUCHANAN GULCH	10/23/00	28	11/01/99	33	28	28	
57	3775	COZZENS WALROD RESERVOIR	HUTCHINSON DRAW	11/01/99	25	05/04/00	40	30	30	
57	3786	HAYDEN RAW WATER RES	SAGE CK	11/01/99	608	05/01/00	910	874	874	
57	3793	WADGE PIT RES	GRASSY CK	09/15/00	140	11/01/99	150	150	150	
57	4000	CURTIS GULCH STOCK POND	CURTIS GULCH	10/31/00	35	11/01/99	37	35	35	
			TOTAL FOR DISTRICT 57		1543		3368	2568	2568	
58	3500	ALLEN BASIN RES	MIDDLE HUNT CK	08/02/00	598	05/01/00	2232	798	798	
58	3501	ALMA M BAER RES	FISH CK	11/01/99	3	11/01/99	3	3	3	
58	3503	BISON PARK RES	LAWSON CK	11/01/99	0	07/07/00	24	0	0	
58	3504	BULL PARK RES 2	WATSON CK	11/01/99	0	05/08/00	35	0	0	
58	3505	BURNT MESA RES	SOUTH HUNT CK	07/26/00	0	06/01/00	62	0	0	
58	3506	CHAPMAN RES	LITTLE OAK CK	09/28/00	0	06/08/00	247	0	0	
58	3508	FISH CREEK RES	MIDDLE FK of FISH CK	04/01/00	2884	06/01/00	4197	3449	3449	
58	3509	FISH LAKE RES 2	WHEELER, LAKE CK	11/01/99	35	11/01/99	35	35	35	
58	3511	GARDNER PARK RESERVOIR	GARDNER PARK CK	11/01/99	720	05/22/00	996	759	759	
58	3512	HAHNS PEAK RES	WILLOW CK	11/01/99	601	11/01/99	601	601	601	
58	3513	HEART LAKE RES	WATSON CK	11/01/99	65	07/21/00	256	132	132	
58	3518	LAKE CREEK RES	WHEELER, LAKE CK	11/01/99	292	11/01/99	292	292	292	
58	3519	LAKE WINDEMERE RES	DE CORA GULCH	10/30/00	0	05/15/00	80	0	0	
58	3520	LEE RESERVOIR	CHIMNEY CK OR S FK	10/31/00	1	05/01/00	11	1	1	
58	3521	LESTER CK RESERVOIR	LESTER CK	09/20/00	5328	04/25/00	5657	5328	5328	
58	3524	MAY RESERVOIR	GEORGES GULCH	10/31/00	1	06/01/00	3	1	1	
58	3525	MCCHIVIS RES	WATSON CK	07/07/00	0	06/07/00	90	30	30	
58	3528	MOORE PARK RES	MOORE PARK CK	11/01/99	21	11/01/99	21	21	21	
58	3530	OAK CREEK RES	OAK CK	09/07/00	1	11/01/99	2	2	2	
58	3532	RAMS HORN RES	DOMCK CK	11/01/99	122	11/01/99	122	122	122	

**WATER DIVERSION SUMMARIES  
WATER YEAR 2000**

WD	STRUCTURES REPORTING		ALL OTHER STRUCTURES					ESTIMATED NUMBER OF VISITS TO STRUCTURE	TOTAL DIVERSIONS TO STORAGE AF	TOTAL DIVERSIONS TO STORAGE AF	TO IRRIGATION		
	With Record Available	No Water Available	No Water Taken	No Info Available	No Record	TOTAL DIVERSIONS AF	TOTAL DIVERSIONS AF				NUMBER OF ACRES IRRIGATED	AVERAGE ACRE- FEET PER ACRE	
	1	2	3	4	5								
43	531	46	79	11	1851		5703	723327	0	287548	26703	10.77	
44	277	31	30	2	2630		1845	164513	0	146689	29180	5.03	
47	431	8	50	7	457		4763	389384	11236	364901	116027	3.14	
54	83	4	18	15	500		408	60787	1918	58487	12767	4.58	
55	19	0	3	0	345		120	13720	0	13720	1914	7.17	
56	43	11	9	6	686		162	12468	0	10756	2493	4.31	
57	84	11	34	5	615		491	63594	190	55721	9526	5.85	
58	412	21	93	24	1525		3515	216981	499	136035	31265	4.35	
	1880	132	316	70	8609		17007	1644774	13843	1073857	229875	4.67	

- Definitions:
- (1) Index on ID with 'UNIQUE' on
  - (2) Count of Structures with NUC=B
  - (3) Count of Structures with NUC=(A,C,D)
  - (4) Count of Structures with and NUC=(E,F)
  - (5) Count of Structures with CIU=U

TRANSMOUNTAIN DIVERSION SUMMARY - OUTFLOWS

WATER YEAR 2000

		SOURCE						CURRENT YEAR			RECIPIENT		
WD	ID	NAME	STREAM	10-YR AVG		AF	DAYS	AF	DAYS	WD	ID	STREAM	
				AF	DAYS								
47	4602	CAMERON PASS DITCH	MICHIGAN RIVER	7.5	7	83	21		3		POUDRE R.		
47	4603	MICHIGAN DITCH	MICHIGAN RIVER	5039	327	4659	333		3		POUDRE R.		
58	4684	SARVIS DITCH	SARVIS CREEK	731	126	26	26		50		MUDDY CK		
58	4630	DOME CREEK DITCH	DOME CRBEK	267	74	223	99		53		EGERIA CK		
58	4685	STILLWATER DITCH	BEAR RIVER	2486	57	2241	57		53		EGERIA CK		

NO TRANSMOUNTAIN DIVERSION INFLOWS

# RIVER CALLS - WATER YEAR 2000

## CALLING PRIORITY

<u>STREAM</u>	<u>STRUCTURE</u>	<u>PERSON CALLING</u>	<u>FIRST</u>	<u>LAST</u>	<u>ADMIN NO.</u>
PICEANCE CREEK	BELOT MOFFAT DITCH	JOHNSON, PAT	05/15/00	08/15/00	13659.00000
PICEANCE CREEK	SQUARE S CONSOL DITCH	VAUGHN, BOONE	05/15/00	11/07/00	12756.00000
PICEANCE CREEK	METZ DITCH	BURKE, CASEY	09/04/00	10/31/00	12755.00000
FORTIFICATION CREEK	WISCONSIN DITCH	GRAY, TOM	06/13/00	10/01/00	14019.00000
MORAPOS CREEK	HIGHLINE DITCH	ROSENDALE, ED	06/19/00	08/19/00	14020.00000
FORTIFICATION CREEK	LITTLE BEAR DITCH	SIMPSON, TIM	06/11/00	10/01/00	13797.00000
MILK CREEK	MILK CREEK DITCH	PROCTOR, WALT	07/13/00	10/01/00	19253.16005
WILLIAMS FORK	DEER CREEK & MORAPAS D.	OSBUN, LARRY	06/16/00	07/31/00	13646.00000
ROARING FORK	MALLON DITCH	TOINTON	06/18/00	09/15/00	18367.00000
NORTH FORK	WESTFORK & VICTOR D.	SWIFT	07/06/00	07/21/00	12568.00000
PINKHAM CREEK	CAPRON DITCH	STATE LINE	06/19/00	08/10/00	11130.00000
LITTLE GRIZZLY	JENNIE DITCH	LOZIER	08/10/00	10/20/00	12958.00000
BIG GRIZZLY	FOREST DITCH	MEYRING, DAN	04/20/00	05/15/00	14583.00000
BIG GRIZZLY	PETERSON #1 DITCH	REUER, JACK	08/05/00	09/22/00	50403.21411
ROCK CREEK	DONELSON DITCH	VERHEUL, DON	05/08/00	07/20/00	12920.00000
ROCK CREEK	KERR DITCH	GREEN, TED	05/09/00	05/25/00	13634.00000
ROCK CREEK	KERR DITCH	GREEN, TED	06/08/00	07/01/00	12908.00000
ILLINOIS RIVER	EVERHARD BALDWIN D.	BURR, BILL	06/17/00	07/01/00	13642.00000
SPRING CREEK	NELLIE E. DITCH	HUSTON, OC	08/09/00	10/17/00	23016.19722
ILLINOIS RIVER	HOME #2 DITCH	PALMER, DON	08/31/00	09/10/00	12945.00000
MICHIGAN RIVER	KIWA DITCH	SILVER SPUR & TRICK	06/13/00	07/10/00	17420.00000
MICHIGAN RIVER	WALDEN MICH R. DIV	TOWN OF WALDEN	08/13/00	08/15/00	19183.00000
MICHIGAN RIVER	NORTH PARK #5 DITCH	GEER, NEWELL	08/15/00	09/22/00	17768.00000
MICHIGAN RIVER	CARLSTROM RESERVOIR	TRICK, CARL	10/09/00	10/23/00	50403.48797
LITTLE SNAKE RIVER	TROWEL DITCH	TAYLOR	08/01/00	08/31/00	13255.00000
WEST FISH CREEK	HIGHLAND DITCH	PEROULIS, ANDY	06/02/00	10/01/00	14501.00000
BEAR RIVER	FIX DITCH	SCHALNUS, JERRY	05/15/00	05/24/00	33782.12586
BEAR RIVE	NICKELL DITCH	ROSSI, JIM	06/24/00	09/29/00	12254.00000
BEAR RIVER	FIX DITCH	SCHALNUS, JERRY	07/12/00	07/23/00	21980.00000
MIDDLE HUNT CREEK	SIMON DITCH	ROSSI, MARK	05/12/00	08/02/00	14032.00000
MIDDLE HUNT CREEK	SIMON DITCH	ROSSI, MARK	08/09/00	09/22/00	14032.00000
NORTH HUNT CREEK	N.HUNT CREEK DITCH	CRAIG, DAN	06/03/00	08/10/00	14348.00000
SOUTH HUNT CREEK	LAFON DITCH	MILWAY, RICK	06/14/00	08/07/00	18529.13985

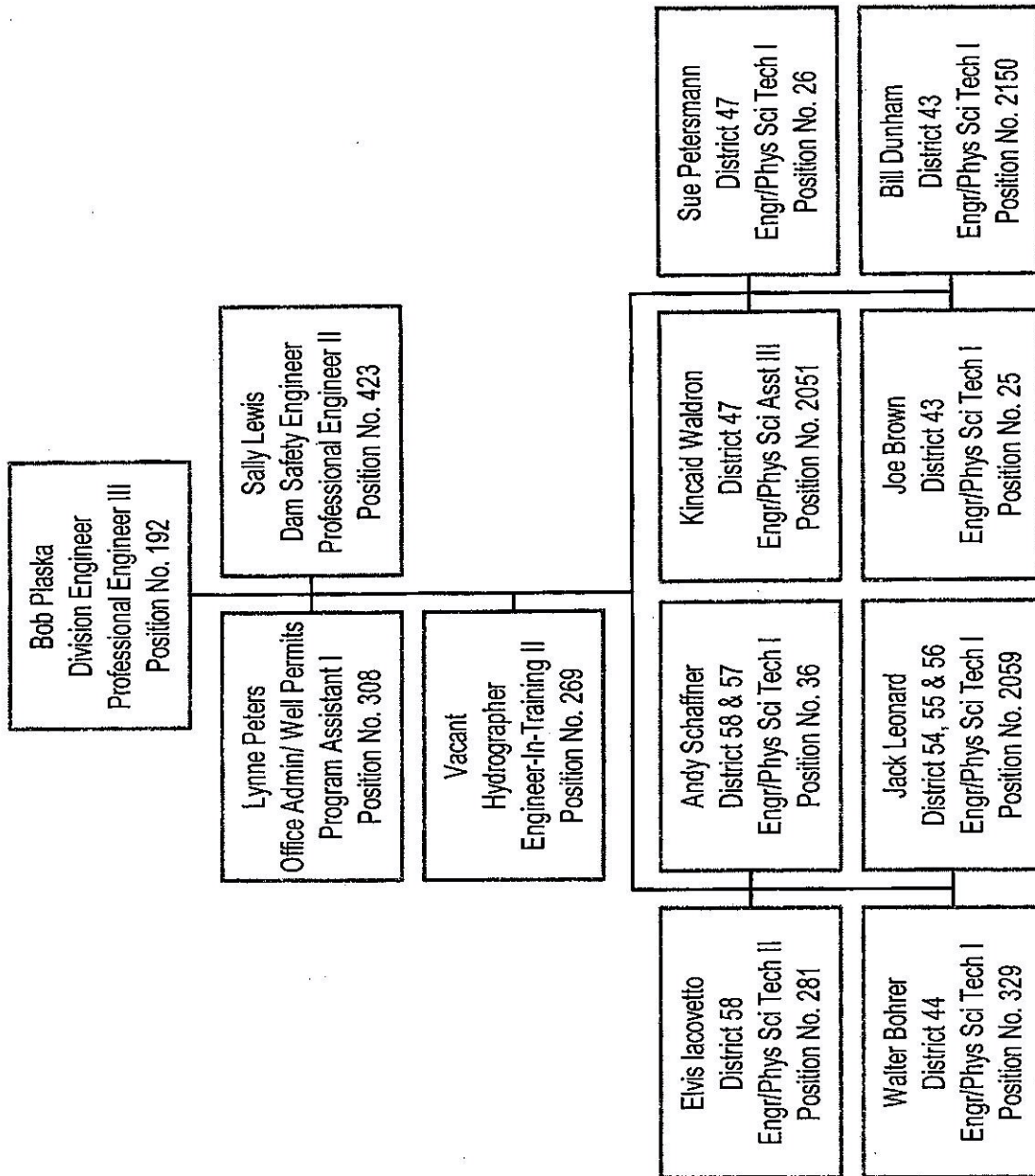
**WATER COURT ACTIVITIES**  
**Calendar Year 2000**

	<u>Division 5</u>	<u>Division 6</u>
Applications .....	19	86
Consultations with Referee.....	29	79
Decrees Issued by Court for Water Rights.....	29	52
Dismissals.....	3	5
Complaints.....	0	0
Change of Venue .....	0	1

<u>TYPE OF RULING</u>	<u>Division V</u> No. of Cases or Orders	<u>Structures</u>	<u>Division VI</u> No. of Cases or Orders	<u>Structures</u>
Findings of Diligence on Conditional Rights	11	11	7	9
Cancellations of Conditional Rights	0	0	11	17
Conditional Water Rights Made Absolute	0	0	3	4
Surface Water Rights Adjudicated	11	55	31	65
Underground Water Rights Adjudicated	0	0	3	5
Water Storage Rights Adjudicated	0	0	8	14
Plans for Augmentation Adjudicated	0	0	0	0
Changes of Water Rights Adjudicated	7	8	2	2
Instream Flow Rights Adjudicated	0	0	0	0
Abandonment List	0	0	0	0



# Division VI Organizational Chart



**2000 OFFICE ADMINISTRATION  
and WORKLOAD MEASURES**

Professional and Technical Staff .....	3.0
Administrative Support Staff .....	1.0
Water Commissioners Assigned .....	6.5
Wells Permitted .....	189
Water Court Appearances .....	3
Water Referee Contacts .....	40
Meetings with Water Users .....	32
Meetings to Resolve Water Related Disputes .....	2
Contacts to Give Public Assistance on Water Rights .....	16714