



**WATER RESOURCES
DIVISION VI**

**ROBERT M. PLASKA
DIVISION ENGINEER**

1998 ANNUAL REPORT

Only Robinson Crusoe had everything done by Friday.

-- Anonymous

TABLE OF CONTENTS

Water Year 1998

Water Administration.....	1-2
<i>Upper Colorado River Compact, Nebraska vs. Wyoming Decree, Pot Creek</i>	
Dam Safety	2-3
Hydrographic Program.....	3-4
Ground Water and Well Permitting	4
Water Records and Information, Water Court Cases, Dispute Resolution.....	4-5
Involvement in Water User Community	5-6
Unaddressed Issues.....	6
Workload Changes and Personnel.....	7
Training.....	8

Water Year 1999

Key Objectives	8-9
----------------------	-----

Water Administration Data Summaries

Transmountain Diversions	10
Storage Water	11-19
Water Diversions	20
Water Diversions to Various Uses.....	21
River Calls.....	22
Water Court Activities	23
Organizational Chart	24
Office Administration and Workload Measures.....	25

Water Year 1998

Water Administration

Division VI had a very good year in 1998. While the volume of runoff was considerably lower than in 1997, summer rains provided almost ideal growing conditions. There was no administration required on the main stem of any major river in the Division. Basin wide, the total precipitation for the year was about 95% of the 30-year average. The table below shows the monthly precipitation totals for selected sites in the Division.

Monthly Precipitation Data for Selected Sites
Water Year 1998
(Inches)

<u>Site</u>	<u>Oct</u>	<u>Nov</u>	<u>Dec</u>	<u>Jan</u>	<u>Feb</u>	<u>Mar</u>	<u>Apr</u>	<u>May</u>	<u>Jun</u>	<u>Jul</u>	<u>Aug</u>	<u>Sep</u>	<u>Total</u>	<u>Annual Avg (61-70)</u>	<u>% of Avg</u>
Meeker	2.61	1.12	.72	.95	1.26	1.94	1.47	.37	3.29	2.14	1.14	.77	17.78	14.91	119
Steamboat	2.03	1.82	.73	3.37	1.60	2.68	1.60	1.31	3.37	1.45	1.94	1.13	23.03	23.51	97
Walden	1.04	.50	.33	.53	.41	1.01	.60	.75	2.53	1.48	1.08	.35	10.61	10.61	100

The water year started out on a good note. There was adequate fall moisture and most of the reservoirs in the Division were near capacity at the start of the storage season. As the fall progressed, precipitation amounts dropped below average and snowfall lagged behind average values. At the beginning of January, the basin wide snowpack was 70% of average. In February, snowfall finally began to pick up and by March 1, the snowpack was 92% of average. Snowfall remained about average for the rest of the winter and by May 1, the basin snowpack was 103% of the 30-year average. Listed below are the monthly snowpack numbers for each major river drainage in the Division. The values are expressed as a percentage of the 30-year average for each drainage.

SNOWPACK AS PERCENT OF AVERAGE

<u>River Drainage</u>	<u>Jan</u>	<u>Feb</u>	<u>Mar</u>	<u>Apr</u>	<u>May</u>
North Platte	71	86	89	82	87
Yampa	65	87	91	90	98
Little Snake	55	89	94	92	90
White	82	91	96	100	118

Coming off two large water years, there were high base flows in all the creeks and rivers that provided a substantial source of water. These high base flows persisted throughout the summer and early fall providing most users with adequate late season water. While there were no calls on the main stem of the major rivers, several tributaries were administered. A list of the river calls is on page 22 of this report.

An event of some significance occurred in Craig in late March of 1998. On March 26, following two days of abnormally high temperatures, Fortification Creek overflowed its banks and flooded several homes located along the creek. Several bridges on county roads were also damaged or destroyed. The snowmelt that caused this event was from low elevation drainage covering a large area. The combination of the snow cover and hot temperatures created tremendous runoff over a very short time period. The peak flow was estimated to be about 6000 to 6500 cfs. The peak of the flooding occurred about 11:00 P.M. By the morning of March 27, the creek was back within its banks.

Upper Colorado River Compact

Under Article XIII (a), The State of Colorado will not cause the flow of the Yampa River at the Maybell gage to be depleted below an aggregate amount of 5,000,000 acre feet for any period of ten consecutive years. For the period 1989 to 1998, the aggregate flow at the Maybell gage was 11,221,000-acre feet.

North Platte River (Nebraska v. Wyoming, U.S. Supreme Court Decree)

Under this decree, Colorado is limited to a total of 145,000 acres of irrigation in the North Platte drainage, storage of no more than 17,000 acre feet per year for irrigation purposes, and no more than 60,000 acre feet of transmountain diversions from the basin in any period of ten consecutive years. In water year 1998, a total of 115,619 acres were reported irrigated and a total of about 6500-acre feet of storage for irrigation occurred. The ten-year total of transmountain diversions out of the basin was 44,923-acre feet. None of the limitations in the Supreme Court Decree were exceeded in 1998.

Pot Creek

Pot Creek is a small tributary to the Green River. Its headwaters are in Utah, and it enters the Green River in Colorado. Water in Pot Creek is apportioned between the users of the two states under a Memorandum of Understanding. During 1998 there was abundant water for all the users on the system. At the annual water users meeting, it was reported that Colorado received over 5800-acre feet of water. Much of this water was delivered when reservoirs in Utah were spilling.

Dam Safety

The 1998 dam safety inspection program included a total of 54 inspections, of which 48 were type 107 safety inspections, four were 107F follow-up inspections and one was a construction inspection.

The five follow-up inspections included two inspections of Big Beaver Dam, Blowdown Water Storage, and Wilson No. 3, all in District 43 and Biskup Dam in District 44.

A storage restriction was imposed on Saddle Dam in District 44 due to piping through the dam near the crest.

The construction on Pole Mountain Dam in District 47 has reached substantial completion with only a short list of items to be completed. A final construction inspection and 107 inspection were completed on November 30, 1998. A final construction report has been received and reviewed.

Design reviews were completed on Long Lake Dam for an outlet replacement and auxiliary spillway, Martin Dam for widening the downstream crest and Culverwell Dam for lining the outlet.

A hydrology study is underway for Elk Lake Dam to determine the spillway adequacy. The dam is under a storage restriction pending the outcome of the study.

In August, Sally Lewis injured her knee during a dam inspection and was unable to complete the remaining inspection schedule for the year. Greg Hammer, Dennis Miller and Alan Pearson filled in to inspect seven Class 1 dams and one Class 2 dam. Six Class 2 dams were not inspected. These dams had been inspected in 1997 and were all in conditionally satisfactory condition. They are all scheduled for inspection in 1999. I would like to thank Greg, Dennis, and Alan for their assistance this past year.

One issue of note has to do with the Martin Dam. As mentioned above, a design review was completed for work to widen the downstream slope. This work was approved in October of 1998. Subsequent to the approval, we were notified that the construction had taken place in August. Consequently, the work was not inspected. Apparently the responsible engineer was not present during much of the construction and had failed to notify this office of the construction, even though he was aware that we had not approved the plans and specifications. We are following up on this situation and will inspect the dam this spring as conditions permit.

Hydrographic Program

Currently there are 40 active stream gaging sites in Division VI. Of the 33 stations operated by the USGS, 21 transmit real-time data. Division personnel operate seven data collection sites. Three of these are equipped with satellite monitoring equipment and have annual records published. Real-time water surface elevation data is also transmitted for three reservoirs in Water District 58.

The Michigan River near Meadow Creek Reservoir station was new in 1998. This station replaced the Michigan River near Gould station that was discontinued in September 1995 when the bridge supporting the stilling well was removed. The primary purpose of the new gage is to assist the District 47 Commissioner with water administration. This installation will not accurately measure flood flows. Large amounts of water bypass the gage in high water.

The satellite monitoring equipment on Willow Creek below Steamboat Lake was modified in October 1997 to transmit reservoir elevations and discharge from the dam. This required moving the DCP from below the toe of the dam to the control house on the dam crest and installing about 400 feet of cable from the shaft encoder at the outlet to the DCP. Data collection from the shaft encoder has been unreliable since the middle of the summer. Apparently, a cow chewed through the encoder cable at a break in the protective conduit. Splicing the cable did not solve the problem. The shaft encoder was then determined to be faulty, but replacing it did not help either. A solution will now have to wait until the snow melts, probably in May.

In addition, equipment was installed at Pearl Lake that transmits pressure transducer data for reservoir surface elevation data. The purpose of this installation is to assist the Colorado Division of Parks in controlling the water surface elevation during spring run-off. So far we have not been successful in transmitting good data, but now think we have resolved the

hardware problems. Although access to this site is very difficult except during the summer months, we hope to have this station operational before spring.

We have requested an additional set of satellite monitoring hardware for installation in Walton Creek near Steamboat Springs. This station was installed and operated by the USGS during the 1960's for a cloud seeding study. The station was discontinued by the USGS in 1987 and has been operated on a part-time basis by DWR since 1995. This site has become important for water administration and flood warning due to the development in the flood plain. Walton Creek has the potential of being quite dangerous because of the high runoff potential of the watershed threatening new development where the creek exits a steep canyon. The administration of CWCB instream flows has also been a topic of discussion related to new development along Walton Creek.

Groundwater and Well Permitting

Division VI continues to issue exempt well permits under the well permitting decentralization program. Andy Schaffner and Walter Bohrer evaluate permit applications and Lynne Peters is responsible for conditioning and issuing the permits. This past year we issued 196 exempt well permits. The normal turn-around time for the issuance of a permit is about five working days.

We also continue to pre-process non-exempt well permit applications prior to submittal to the Denver office.

Water Records and Information

We continue to update our databases for use in Qinfo. All of the Water Commissioners receive updated information on a regular basis for their use in responding to questions from the water users. This past year we provided copies of our data to the Denver office for inclusion in the Hydrobase database.

Diversion records for water year 1997 were provided to the Denver office in January. These records were incorporated into our database and are provided to the public as requested. Requests for information are normally handled using the Qinfo program that allows access to all the various databases we maintain. A summary of our records for water year 1998 is presented on pages 11 through 21.

This past fall, the CRDSS tools were loaded on some of the machines in the Division for testing and evaluation. Ray Bennett and Doug Stenzel visited our office to perform the installation and upgraded several PC's so that they were capable of running the programs. They also provided training to the staff who participated in the evaluation program.

Water Court Cases

The caseload in the Division VI Water Court was slightly less than in calendar year 1997. There were a total of 79 cases filed in Division VI and 31 cases filed in Division V. A summary of these filings are on page 22 of this report.

The major cases in the basin that are still drawing a lot of attention are filings made in 1995 by the Colorado Water Conservation Board for minimum stream flows on the Yampa River. One case deals with a base flow condition and the companion case is for an additional

minimum stream flow for recovery of endangered species. These cases have been on hold while additional studies are underway in the basin. One of the major issues surrounding these cases is the impact they may have on the basin from the standpoint of future development and the initiation of a call on the main stem of the river. The Yampa River main stem has never been subject to a call.

There appears to be an increasing number of cases requesting augmentation plans on both the Yampa and White River basins. As these types of cases become more prevalent they will undoubtedly require additional resources to both evaluate the claims and to administer the decrees.

Dispute Resolution

There are two on-going disputes that are worthy to note. The first deals with the long standing dispute between the Haggerty and Self families. This dispute has involved three different division engineers and final resolution has not yet been achieved. This year, two of the parties' applications were decreed by the court. There were also several site visits to Spring Gulch to verify claims and counter claims. While progress was made this past year, there are still several outstanding issues to be addressed.

Another dispute is on the Little Snake River. It deals with an application to transfer water rights from a ditch that heads in Wyoming to a ditch in Colorado. This case has been going on for a couple of years and a resolution seems near. An agreement to settle the case is being reviewed and we are working with the Referee to draft a proposed decree that will address both administrative issues and compact concerns.

Involvement in the Water User Community

Division staff continues to assist the public in the preparation of water court and well permitting applications and providing water rights information. We continue to provide assistance to dam owners with completing Emergency Preparedness Plans and to water users with the proper selection and installation of water measuring devices.

Division staff attended all the regularly scheduled meetings of the Colorado River Water Conservation District and Upper Yampa Water Conservancy District. In addition, Elvis Iacovetto, Water Commissioner for District 58, was appointed to the Upper Yampa Board of Directors in early 1998. Since he is representing the area that he is also responsible for administering, he was required to get the approval of the users in his District. There was overwhelming support from the users for his appointment to the District Board.

In addition to the regular meeting of the Districts mentioned above, we attended numerous meetings with water users throughout the year. Several meetings were called by the Upper Yampa District to discuss the Hayden Project. This is a project in the Hayden area that the district is sponsoring. They are investigating the possibility of combining up to five ditches into a single ditch, thus eliminating five gravel diversion dams on the Yampa River. The Natural Resources Conservation Service and the U.S. Bureau of Reclamation are also involved in the study of this project.

Water Commissioners Andy Schaffner and Elvis Iacovetto again participated in a program sponsored by the South Routt County High School dealing in water awareness. They showed students how to use current meters to measure stream flows and discussed issues relating to water administration.

We participated in a meeting in North Park to discuss the implications of the Platte River Endangered Species Partnership Cooperative Agreement. North Park water users have been asked to decide whether they wish to participate with the South Platte water users in this agreement. Jim Lochhead, then Director of Natural Resources, and Wendy Weiss of the Attorney General's office, were there to explain the program.

Kent Holt provided assistance in the publication of a children's workbook about water. The book is sponsored by Steamboat Springs Water and the Upper Yampa Water Conservancy District. It is scheduled for publication in 1999.

Staff attended the dedication of the Smith Ditch Project sponsored by the Upper Yampa District. This project was completed in 1997, but was first used in 1998. This project uses an inflatable diversion dam to allow diversions in low flow periods. The diversion structure worked well in its first year of operation. The Division was presented with a Certificate of Appreciation for their assistance with the project.

Staff provided technical assistance on the Brock Ditch relocation. This project was sponsored by the Upper Yampa District to move the headgate of the Brock Ditch from a back slough to the main stem of the Yampa River. The construction of the new headgate and the extension of the ditch were completed in the fall of 1998. The new headgate will be used for the first time in 1999.

The Upper Yampa Water Conservancy District was recognized as the Water User of the Year for Division VI at our Fall Water Commissioners meeting. This award was presented to them in recognition of the work they have done to improve diversion structures on the Yampa River in the last year. The District has been very pro-active in the last several years, attempting to find projects that help water users in the District and also benefits the river system as a whole. It was a pleasure to recognize their efforts.

Unaddressed Issues

While we were able to address most of the issues that arose this year, there are several that are unresolved and need additional attention. One that has been lingering for several years is the minimum stream flow filing for the Yampa River by the Colorado Water Conservation Board. The Board has been considering the option of withdrawing or modifying the filings. Hopefully, this will be resolved in the coming year.

Another issue deals with whether the water users in North Park will opt to be covered by the Cooperative Agreement dealing with the protection of endangered species in central Nebraska. The users have received an extension of time to make their decision until early in 1999.

An issue that deals with Division staffing, is the injury to Sally Lewis and how it impacts her ability to perform dam safety inspections. She has provided information from her doctor that is being reviewed to determine the consequences of this injury. We hope to have this resolved as soon as possible so the dam inspection program is not impacted in the upcoming year.

Workload and Personnel

There were significant changes in the Division this past year, especially in respect to personnel. In January, Ed Blank retired as the Division Engineer. Ed had served in that capacity for 9 years and had worked for the Division of Water Resources for a total of 23 years. We all wish Ed and his wife Orah, a happy and long retirement.

In addition, long time Water Commissioner, Eric Wagner, decided to retire in August. Eric had been the commissioner in North Park for 22 years. Eric's knowledge of the area and his fine working relationship with the water users will be sorely missed. We wish Eric the best of luck in the future.

I wish to thank Kincaid Waldron, the Deputy Commissioner in North Park, for all his help in completing the work in District 47 this year. Kincaid assumed all the duties in the District after Eric's retirement and did a fine job finishing up the water year.

We are presently moving forward with filling the vacancy left by the Eric's retirement. The decision was made to advertise this position as permanent part-time, at ten months per year and it will be filled through the open competitive process. There has been a great deal of initial interest in the position.

After a thorough panel evaluation of Lynne Peters' revised PDQ, the Administrative Assistant III position was reclassified to Program Assistant I. This reclassification resulted because of a change of job duties over the past several years, and the additional responsibilities of the decentralized well permitting program.

This year the Division Engineer was unable to identify a specific Water Commissioner who deserved to be recognized as the Water Commissioner of the Year. After a long and agonizing review, it became apparent that all the commissioners had done a fine job of keeping their new Division Engineer out of trouble and handling the problems in their Districts. With the concurrence of the State Engineer, the award for the Division VI Water Commissioner of the Year was awarded to all of the active commissioners. Since the Commissioner of the Year from each division normally gets a trip to the Colorado Water Officials Annual Meeting, and we cannot afford to send seven participants, it was decided that two of our commissioners will be selected by random drawing to attend next years meeting. The State Engineer will pay expenses for one and Division VI will pay for the other. I want to thank all the Commissioners for their hard work this past year.

Each year, it seems we have new responsibilities added to our existing workloads. New technology encourages additional demands on our time and resources. This often forces us to evaluate the new demands in relation to our other duties, and available resources, and to make difficult decisions. Occasionally, we must delay completion of important routine tasks or preempt them entirely to work on special rush projects.

The annual meeting of the Colorado Water Officials was held in Steamboat in October. All of the staff of Division VI participated in the preparations for the meeting. Hosting this meeting required a great deal of time, which affected everyone's workload. I want to thank all of my staff for their efforts in making the meeting a great success.

Training

Training for Division VI staff was provided from a variety of sources. The major training activities are listed below:

- Lynne Peters attended the annual Administrative/Program Assistants training in Durango in August.
- Sally Lewis attended classes at the local collage and ESRI, in Boulder, in GIS application.
- Sally Lewis, Kent Holt, Andy Schaffner and Elvis Iacovetto received training in using the CRDSS toolkit.
- Bob Plaska attended a Minimum Stream Flow conference in Copper Mountain.
- Bob Plaska participated on a tour of the Lower Colorado River Basin Sponsored by the Colorado River Water Conservation District.

WATER YEAR 1999

Key Objectives

As we begin the new year, we have several objectives that are of great importance to us. Perhaps the greatest challenge we face will be the implementation of the Colorado Peak Performance program. There is a great deal of apprehension over this program and it will take hard work to make it successful. Hopefully, the training that is being provided will go a long way in alleviating the fears that people have about the program and how it will operate.

We look forward to the selection of a new Lead Water Commissioner for District 47. Given the time frame of the selection process, the new person will have a very short time between being hired and the beginning of runoff season. We will be working hard to get the new commissioner trained as soon as possible. It is anticipated that we will need to expend additional resources in the coming year to assist the new commissioner.

We need to be vigilant in our dealings with the Water Court. The continuous growth in Division VI has contributed to an increase of augmentation plans filed in court. The review of these plans will require a greater amount of staff time. We will strive to coordinate our activities with the Denver staff in order to evaluate these cases as efficiently as possible.

With the new year comes a new Long-Range Plan for the Division of Water Resources. A key objective in the coming year is the successful implementation of this plan.

Implementation of Hydrobase and CRDSS is also an important objective in 1999. As these systems come on line, we will need to provide extensive training for our staff to make the switch from Qinfo to the new programs as smooth as possible. We will be looking to the staff of the IT section in Denver to assist in these training needs.

We need to prepare for the year 2000 Abandonment List. This spring we plan to begin an evaluation of water rights that are candidates for abandonment.

The completion of scheduled dam inspections and enforcement of restrictions will be a high priority.

During 1999, we will work on a plan to identify innovative water administration techniques that will improve our efficiency. This will be a discussion item at our Spring Water Commissioner meeting. Key in this area will be the uses of our networking capabilities. In 1999, all water commissioners in Division VI will finally have access to the wide area network via local phone calls.

Being efficient in our operations and functioning within our budgetary limits continues to be an on-going objective of the Division.

TRANSMOUNTAIN DIVERSION SUMMARY - OUTFLOWS

SOURCE										RECIPIENT		
WD	ID	NAME	STREAM	10-YR AVG			CURRENT YEAR			WD	ID	STREAM
				AF	DAYS	DAYS	AF	DAYS	DAYS			
47	4602	CAMERON PASS DITCH	MICHIGAN RIVER	45	13	0	0	0	0	3		POUDRE R.
47	4603	MICHIGAN DITCH	MICHIGAN RIVER	4510	295	353	5284	353	3			POUDRE R.
58	4684	SARVIS DITCH	SARVIS CREEK	973	209	88	1683	88	50			MUDDY CK
58	4630	DOME CREEK DITCH	DOME CREEK	232	57	105	312	105	53			EGERIA CK
58	4685	STILLWATER DITCH	BEAR RIVER	2446	121	79	2491	79	53			EGERIA CK

NO TRANSMOUNTAIN DIVERSION INFLOWS

RESERVOIR STORAGE SUMMARIES BY DISTRICT

WD	ID	RESERVOIR	SOURCE STREAM	AMOUNT IN STORAGE (AF)				End of Year
				Minimum		Maximum		
				Date	AF	Date	AF	
43	3500	WINDY BILL SPRING POND	EAST BEAVER CK	04/09/98	7	04/09/98	7	7
43	3630	BAILEY LAKE RETAIN POND	SWEDE CK	05/14/98	23	05/14/98	23	23
43	3632	BEAVER LAKE RESERVOIR	VAUGHN CK	05/12/98	67	05/12/98	67	67
43	3633	BIG BEAVER CK RESERVOIR	BIG BEAVER CK	07/16/98	5345	05/12/98	6836	6359
43	3634	BLACK GULCH RES	BLACKS GULCH	04/29/98	0	04/29/98	0	0
43	3636	CABIN LAKE RESERVOIR	VAUGHN CK	05/12/98	16	05/12/98	16	16
43	3638	GOOSMAN RESERVOIR	ELK CK	04/09/98	6	04/09/98	6	6
43	3639	GREGOR RESERVOIR	VAUGHN CK	05/08/98	47	05/08/98	47	47
43	3642	JOHNNY JOHNSON RES	WHITE RIVER	04/10/98	800	06/17/98	1036	840
43	3643	KEYSTONE RES 2	PRICE CK	07/27/98	25	04/05/98	151	40
43	3644	KEYSTONE BEN PRICE RES	PRICE CK	08/11/98	25	04/08/98	287	25
43	3645	KEYSTONE RES 3	DEEP CHANNEL CK	06/11/98	0	04/08/98	31	0
43	3647	LARSON RES	TRIBUTARIES-PICEANCE CK	04/06/98	6	04/06/98	6	6
43	3649	LUNNEY RESERVOIR	NINE MILE DRAW	04/07/98	82	04/07/98	82	82
43	3651	MCGINNIS MEADOW RES	SOUTH SKINNY FISH CK	05/14/98	87	05/14/98	87	87
43	3652	MCHATTEN RESERVOIR	COAL CK	06/30/98	0	04/07/98	64	10
43	3656	PROCTER RESERVOIR	CURTIS CK	04/01/98	0	05/07/98	7	0
43	3657	SEVENTH LAKE RESERVOIR	VAUGHN CK	05/12/98	32	05/12/98	32	32
43	3659	SKINNY FISH RESERVOIR	SKINNY FISH CK	05/14/98	301	05/14/98	301	301
43	3660	STUMP LAKE RESERVOIR	VAUGHN CK	05/12/98	10	05/12/98	10	10
43	3668	WATKIN RESERVOIR	COAL CK	04/07/98	135	04/07/98	135	135
43	3669	WEST MILLER RESERVOIR	WEST MILLER CK	01/04/98	78	01/04/98	78	78
43	3671	WILSON RES	EAST FLAG CK	04/01/98	1	05/07/98	1	1
43	3672	WEST STEWART GULCH RES	WEST STEWART GULCH	06/19/98	7	05/31/98	15	14
43	3716	JOY JOY & WATSON RES	FAWN CK	04/08/98	6	04/08/98	6	6
43	3717	EVACUATION CR LAKE RES	WEST EVACUATION CK	06/24/98	95	06/24/98	95	95
43	3769	BIG LICK RES	BIG BEAVER CK	09/14/98	300	04/09/98	503	300
43	3893	MARK RES NO 1	WEST CK	05/29/98	24	05/29/98	24	24
43	3894	BANTA RES NO 1	WEST CK	06/03/98	0	05/29/98	24	0
43	3895	KIRBY RES NO 2/60	WEST CK	05/29/98	28	05/29/98	28	28
43	3896	ALBRIGHT RES NO 2	WEST CK	05/29/98	0	05/29/98	0	0
43	3897	MARK RES NO 3	WEST CK	05/29/98	28	05/29/98	28	28
43	3904	BALL LAKE RESERVOIR	MARVINE CK	05/04/98	18	05/04/98	18	18

RESERVOIR STORAGE SUMMARIES BY DISTRICT

WD	ID	RESERVOIR	SOURCE STREAM	AMOUNT IN STORAGE (AF)					
				Minimum		Maximum		End of Year	
				Date	AF	Date	AF	Date	Year
43	4272	JACOBS RESERVOIR	STRAWBERRY CK	07/27/98	15	7/27/98	15	15	15
43	4280	MARK RES NO 2	WEST CK	05/29/98	31	5/29/98	31	31	31
43	4284	NINE MILE RANCH RES 1	CURTIS CK	04/01/98	41	4/1/98	41	41	41
43	4291	RAINBOW LAKE	NORTH FORK	05/14/98	37	5/14/98	37	37	37
43	4308	THEOS RES 1	COAL CK	04/07/98	51	04/07/98	51	51	51
43	4320	JENSEN RES 1	CURTIS CK	04/01/98	19	04/01/98	19	19	19
43	4433	TAYLOR DRAW RES	WHITE RIVER	03/30/98	13800	03/30/98	13800	13800	13800
43	4446	JOHNSON POND 15	TRIBUTARIES-PICEANCE CK	04/19/98	1	05/29/98	2	1	1
43	4463	VANDIVER POND	TRIBUTARIES-NORTH FK	05/14/98	25	05/14/98	25	25	25
43	4497	BLUE MOUNTAIN RES	WOLF CK	10/05/98	6	04/22/98	68	6	6
43	4499	REEVES RES	WOLF CK	04/22/98	34	04/22/98	34	34	34
43	4504	TAYLOR RES	HUNTER CK	05/01/98	81	05/01/98	81	81	81
TOTAL FOR DISTRICT 43					21751		24266		22837
44	3504	SULLIVAN RES LOWER	CEDAR CK	05/15/98	0	08/20/98	50	0	0
44	3673	WADDLE CK RES	WADDLE CK	04/30/98	40	04/30/98	40	40	40
44	3674	WILSON RESERVOIR	GOOD SPRING CK	03/30/98	68	03/30/98	68	68	68
44	3675	WYMAN RES	LITTLE BEAVER CK	10/21/98	67	05/14/98	95	67	67
44	3677	ANDERSON RES	NORTH FK of ELKHEAD CK	09/20/98	33	04/27/98	128	33	33
44	3682	COVE LAKE RES	MORAPOS CK	10/26/98	27	07/13/98	74	27	27
44	3683	COVE RES	MORAPOS CK	10/26/98	10	05/20/98	115	10	10
44	3686	DRESCHER RES	BASIN GULCH	11/16/97	0	04/10/98	240	0	0
44	3688	DUNKLEY DEUBEAU RES	WILLOW CK	08/12/98	49	05/20/98	50	49	49
44	3689	D D & E RES	MILK CK	10/21/98	310	04/27/98	1249	310	310
44	3695	LEFTWICH RES	BOONE CK	11/18/97	35	04/27/98	36	35	35
44	3701	POOSE CK RES	POOSE CK	05/20/98	278	05/20/98	278	278	278
44	3702	ROBY RES	MORAPOS CK	11/26/97	21	05/20/98	26	21	21
44	3706	SELLERS CROWELL RES	WILLOW CK	08/12/98	21	05/20/98	106	21	21
44	3721	ELLGEN RESERVOIR	BELL ROCK GULCH	10/26/98	46	04/18/98	133	46	46
44	3722	ELLGEN RESERVOIR NO 2	MC LERNON DRAW	07/01/98	0	04/18/98	54	0	0
44	3723	B & B RESERVOIR	FLUME GULCH	11/18/97	22	11/18/97	22	22	22

RESERVOIR STORAGE SUMMARIES BY DISTRICT

WD	ID	RESERVOIR	SOURCE STREAM	AMOUNT IN STORAGE (AF)						End of Year
				Minimum		Maximum		Date	AF	
				Date	AF	Date	AF			
44	3738	FREEMAN RESERVOIR	LITTLE COTTONWOOD CK	08/25/98	111	05/22/98	115	111	111	
44	3739	SHAFFER RESERVOIR	WILLOW CK	08/12/98	0	05/20/98	31	0	0	
44	3790	SADDLE RES	BUTLER CK	05/15/98	0	05/15/98	0	0	0	
44	3824	BISKUP RESERVOIR	TWO SPRINGS GULCH	11/18/97	0	03/30/98	136	32	32	
44	3902	ELKHEAD RESERVOIR	ELKHEAD CK	11/18/97	13574	11/18/97	13574	13574	13574	
44	3912	RAW WATER RESERVOIR	TRIBUTARIES	11/16/97	554	11/16/97	554	554	554	
44	3925	FLAT TOP RES	SECOND CK	07/23/98	87	05/20/98	105	87	87	
44	4381	PEARCE RES	TRIBUTARIES	11/10/97	50	11/10/97	50	50	50	
44	4436	ROBB PIT	TRIBUTARIES	11/10/97	807	11/10/97	807	807	807	
44	4437	KITCHENS & KLECKNER RES	TRIBUTARIES-ELKHEAD CK	04/27/98	30	04/27/98	30	30	30	
44	4453	LOUDY RESERVOIR	TRIBUTARIES	11/16/97	50	11/16/97	50	50	50	
TOTAL FOR DISTRICT 44					16290		18215	16337		
47	3523	ABRAHAM POND	TRIBUTARIES-ILLINOIS R	11/01/97	0	11/01/97	0	0	0	
47	3528	ANTELOPE POND	TRIBUTARIES-ILLINOIS R	11/01/97	0	11/01/97	0	0	0	
47	3529	BREWER POND	TRIBUTARIES-ILLINOIS R	11/01/97	0	06/12/98	2	0	0	
47	3530	ELK POND	TRIBUTARIES-ILLINOIS R	09/30/98	0	11/01/97	10	0	0	
47	3531	POTTER CREEK POND	TRIBUTARIES-ILLINOIS R	11/01/97	0	06/12/98	36	0	0	
47	3532	SEVENTY SIX POND	TRIBUTARIES-ILLINOIS R	11/01/97	25	11/01/97	25	25	25	
47	3533	WILSON POND	TRIBUTARIES-ILLINOIS R	11/01/97	0	06/12/98	13	0	0	
47	3534	ALKALI POND	POTTER CK	11/01/97	0	06/12/98	22	0	0	
47	3535	ALLARD CONTOUR, MID POND	TRIBUTARIES-ILLINOIS R	11/01/97	0	06/12/98	6	6	6	
47	3536	ALLARD CONTOUR N. POND	TRIBUTARIES-ILLINOIS R	11/01/97	0	06/12/98	4	4	4	
47	3537	ALLARD POND, NORTH	TRIBUTARIES-ILLINOIS R	11/01/97	8	11/01/97	8	8	8	
47	3538	ALLARD COUNTOUR, S. POND	TRIBUTARIES-ILLINOIS R	11/01/97	0	06/12/98	7	7	7	
47	3539	ALLARD POND, SOUTH	TRIBUTARIES-ILLINOIS R	11/01/97	3	11/01/97	3	3	3	
47	3540	ANDERSON CONTOUR POND	TRIBUTARIES-ILLINOIS R	11/01/97	0	06/12/98	4	0	0	
47	3541	ANDERSON DRAIN	ILLINOIS RIVER	11/01/97	0	06/12/98	3	0	0	
47	3542	AVOCET POND	TRIBUTARIES-ILLINOIS R	11/01/97	15	11/01/97	15	15	15	
47	3543	BIRDIE POND	TRIBUTARIES-ILLINOIS R	11/01/97	9	11/01/97	9	9	9	
47	3544	BIRDIE POND	TRIBUTARIES-ILLINOIS R	05/11/98	0	11/01/97	19	19	19	

RESERVOIR STORAGE SUMMARIES BY DISTRICT

WD	ID	RESERVOIR	SOURCE STREAM	AMOUNT IN STORAGE (AF)				End of Year
				Minimum		Maximum		
				Date	AF	Date	AF	
47	3545	BROCKER POND NORTH	TRIBUTARIES-ILLINOIS R	11/01/97	0	07/01/98	15	0
47	3546	BUDDIES POND	TRIBUTARIES-ILLINOIS R	10/01/98	0	11/01/97	15	0
47	3547	BULRUSH POND	TRIBUTARIES-ILLINOIS R	11/01/97	16	11/01/97	16	16
47	3548	CASE RES #2 ANNEX POND	TRIBUTARIES-ILLINOIS R	11/01/97	0	06/12/98	13	0
47	3549	CATTAIL POND	TRIBUTARIES-ILLINOIS R	11/01/97	0	06/12/98	9	0
47	3550	COYOTE POND	TRIBUTARIES-ILLINOIS R	11/01/97	0	06/12/98	3	0
47	3551	DIVERSION POND	TRIBUTARIES-ILLINOIS R	11/01/97	0	11/01/97	0	0
47	3552	EAGLE POND	TRIBUTARIES-ILLINOIS R	10/12/98	0	11/01/97	22	0
47	3553	EISEMANN POND	TRIBUTARIES-ILLINOIS R	10/01/98	0	11/01/97	15	0
47	3554	FISH HATCHERY POND, EAST	TRIBUTARIES-ILLINOIS R	11/01/97	8	11/01/97	8	8
47	3555	FISH HATCHERY POND WEST	POTTER CK	11/01/97	0	05/21/98	2	2
47	3556	FISHERMAN'S PARKING POND	TRIBUTARIES-ILLINOIS R	11/01/97	0	05/21/98	1	0
47	3557	FOLLETT POND	TRIBUTARIES-ILLINOIS R	11/01/97	10	11/01/97	10	10
47	3558	FOX POND	SPRING CK	11/01/97	0	06/12/98	108	0
47	3559	GERM POND	TRIBUTARIES-ILLINOIS R	11/01/97	28	11/01/97	28	28
47	3560	GOOSE POND	TRIBUTARIES-ILLINOIS R	11/01/97	49	11/01/97	49	49
47	3561	GREASEWOOD POND	TRIBUTARIES-ILLINOIS R	10/01/98	0	11/01/97	10	0
47	3562	HAMPTON NO 1 POND	TRIBUTARIES-ILLINOIS R	11/01/97	0	05/21/98	1	1
47	3563	HAMPTON NO 2 POND	TRIBUTARIES-ILLINOIS R	11/01/97	22	11/01/97	22	22
47	3564	HAMPTON NO 3 POND	TRIBUTARIES-ILLINOIS R	11/01/97	25	11/01/97	25	25
47	3565	HOME POND	TRIBUTARIES-ILLINOIS R	05/21/98	0	11/01/97	52	52
47	3566	HORSESHOE POND	TRIBUTARIES-ILLINOIS R	11/01/97	0	06/12/98	2	0
47	3567	KITCHEN POND	TRIBUTARIES-ILLINOIS R	11/01/97	0	05/21/98	9	0
47	3568	LIVING ROOM POND	TRIBUTARIES-ILLINOIS R	09/30/98	0	11/01/97	6	0
47	3569	MARSH POND	ANTELOPE CK	11/01/97	15	11/01/97	15	15
47	3570	MCCAMMON POND NORTH	TRIBUTARIES-ILLINOIS R	11/01/97	0	06/12/98	8	8
47	3571	MCCAMMON POND SOUTH	TRIBUTARIES-ILLINOIS R	11/01/97	41	11/01/97	41	41
47	3572	N. TOUR ROUTE POND	TRIBUTARIES-ILLINOIS R	11/01/97	0	05/21/98	10	10
47	3573	OLD ROAD POND	TRIBUTARIES-ILLINOIS R	11/01/97	0	05/21/98	5	0
47	3574	ONE TWENTY FIVE POND	TRIBUTARIES-ILLINOIS R	11/01/97	17	11/01/97	17	17
47	3575	PATTEN POND	TRIBUTARIES-ILLINOIS R	11/01/97	0	06/12/98	10	0
47	3576	POTHOLE POND	TRIBUTARIES-ILLINOIS R	11/01/97	0	06/08/98	7	0
47	3577	PRAIRIE DOG POND	ANTELOPE CK	11/01/97	0	06/12/98	18	18

RESERVOIR STORAGE SUMMARIES BY DISTRICT

WD	ID	RESERVOIR	SOURCE STREAM	AMOUNT IN STORAGE (AF)					
				Minimum		Maximum		End of Year	
				Date	AF	Date	AF		
47	3579	RIZOR POND	TRIBUTARIES-ILLINOIS R	11/01/97	11	11/01/97	11	11	11
47	3580	ROADSIDE POND NORTH	TRIBUTARIES-ILLINOIS R	11/01/97	0	06/12/98	4	4	0
47	3581	ROADSIDE POND SOUTH	TRIBUTARIES-ILLINOIS R	09/30/98	0	11/01/97	6	6	0
47	3582	ROSS POND	POTTER CK	09/30/98	0	11/01/97	5	5	0
47	3583	SCHOOL POND NORTH	TRIBUTARIES-ILLINOIS R	05/21/98	0	11/01/97	30	30	0
47	3584	SCHOOL POND SOUTH	TRIBUTARIES-ILLINOIS R	11/01/97	0	05/21/98	27	27	0
47	3585	SMITH POND	TRIBUTARIES-ILLINOIS R	09/30/98	0	11/01/97	12	12	0
47	3586	SOLBERG POND	TRIBUTARIES-ILLINOIS R	11/01/97	11	11/01/97	11	11	11
47	3587	SOUTH TOUR ROUTE POND	TRIBUTARIES-ILLINOIS R	11/01/97	0	05/21/98	1	1	0
47	3588	SPRING CREEK POND	SPRING CK	11/01/97	63	11/01/97	63	63	63
47	3589	VARNEY POND	TRIBUTARIES-ILLINOIS R	05/21/98	0	11/01/97	21	21	0
47	3590	WILLFORD POND	TRIBUTARIES-ILLINOIS R	06/12/98	0	11/01/97	62	62	0
47	3595	BIG CREEK RESERVOIR	SOUTH FK of BIG CK	08.27/98	112	11/01/97	1434	1434	1434
47	3596	BOETTCHER LAKE RES	LAKE CK	11/01/97	129	06/15/98	265	265	197
47	3597	BUFFALO RES	BUFFALO CK	07/07/98	308	05/04/98	486	486	455
47	3598	BUTTE RES	TRIBUTARIES	08/01/98	502	11/01/97	754	754	731
47	3599	CARLSTROM RES	MICHIGAN RIVER	07/09/98	308	11/01/97	530	530	448
47	3600	CASE RES NO 1	ANTELOPE CK	05/06/98	51	07/15/98	117	117	70
47	3601	CASE RES NO 2	POTTER CK	05/06/98	79	11/01/97	98	98	79
47	3602	CASE RES NO 3	POTTER CK	05/06/98	15	11/01/97	30	30	16
47	3603	CLAYTON RESERVOIR	BUFFALO CK	11/01/97	130	04/22/98	213	213	130
47	3604	DARCY RES	LIL WILLOW AKA ROCK CK	11/01/97	0	05/10/98	7	7	0
47	3605	FULLER RES	COW CK	11/01/97	8	11/01/97	8	8	8
47	3608	HECLA RESERVOIR	ARAPAHOE CK	08/15/98	158	11/01/97	255	255	255
47	3609	HUNTER RES	SOUTH FK of THREE MI CK	11/01/97	0	11/01/97	0	0	0
47	3610	JACKSON RES	RILEY CK	08/12/98	92	11/01/97	119	119	119
47	3613	LAKE ROSLYN RES	HOWD CREEK	07/08/98	240	11/01/97	290	290	290
47	3614	MACFARLANE RES	SOAP CK	10/01/98	65	05/27/98	109	109	4065
47	3615	MCGOWAN RES	MIDDLE FK of MEXICAN CK	11/01/97	40	11/01/97	40	40	40
47	3616	MEXICAN RESERVOIR	MEXICAN CK	07/02/98	57	05/01/98	154	154	75
47	3617	P W FISCHER RES	FISCHER DRAW	07/18/98	14	11/01/97	29	29	29
47	3620	SHAWVER RES	DEER CK	11/01/97	0	04/25/98	10	10	0
47	3621	SLACK & WEISS RES	NINEGAR CK	08/02/98	82	11/01/97	152	152	123

RESERVOIR STORAGE SUMMARIES BY DISTRICT

WD	ID	RESERVOIR	SOURCE STREAM	AMOUNT IN STORAGE (AF)					
				Minimum		Maximum		End of Year	
				Date	AF	Date	AF		
47	3622	SOUTH ARAPAHOE RES	ARAPAHOE CK	08/06/98	6	11/01/97	16	16	
47	3623	STAMBAUGH RES	CROSBY CK	11/01/97	88	05/12/98	139	88	
47	3624	STATE WALDEN RES	POTTER CK	11/01/97	38	11/01/97	38	38	
47	3625	THREE MILE RES	THREE MILE CK	08/16/98	18	11/01/97	49	49	
47	3626	VANVALKENBURG RES	ED VAN VALKENBURG DRAW	11/01/97	35	05/10/98	54	35	
47	3627	WALDEN RESERVOIR	ILLINOIS RIVER	10/12/98	3158	06/21/98	4943	3158	
47	3628	WEST ARAPAHOE RES	ARAPAHOE CK	11/01/97	98	05/13/98	497	98	
47	3629	WILLS RES	SIX MILE CK	11/01/97	0	05/10/98	10	0	
47	3630	TWO LEDGE RES	COYOTE CK	11/01/97	20	05/10/98	40	20	
47	3652	FOUR ZERO FOUR POND	TRIBUTARIES-ILLINOIS R	10/01/98	0	11/01/97	14	0	
47	3653	NO NAME POND	TRIBUTARIES-ILLINOIS R	09/30/98	0	11/01/97	0	0	
47	3725	ADDISON RESERVOIR	BUFFALO CK	07/12/98	0	11/01/97	42	42	
47	3726	AQUA FRIA RES	BEAVER CK of ROARING FK	11/01/97	550	11/01/97	550	550	
47	3742	LAUNE RESERVOIR	TRIBUTARIES	07/16/98	2165	11/01/97	322	2618	
47	3743	SEYMOUR RES	BIG GRIZZLY CK	08/02/98	236	11/01/97	525	525	
47	3744	COYTE RESERVOIR	ARAPAHOE CK	11/01/97	38	11/01/97	38	38	
47	3750	LAKE JOHN	LAKE CK	09/21/98	6522	04/30/98	7035	6807	
47	3752	GINGER QUILL RESERVOIR	THREE MILE CK	11/01/97	38	11/01/97	38	38	
47	3753	NORTH MICHIGAN CK RES	NORTH FK of MICHIGAN R	05/16/98	675	06/08/98	1321	1321	
47	3756	HOUSE RES	LOST CK	11/01/97	45	11/01/97	45	45	
47	3757	RIDINGS RES	BUFFALO CK	11/01/97	0	06/25/98	46	0	
47	3760	BURNS RES	CHEDSEY CK	11/01/97	18	04/15/98	39	39	
47	3777	NINEGAR RESERVOIR	NINEGAR CK	08/01/98	0	11/01/97	24	24	
47	4335	MEADOW CREEK RES	MEADOW CK	09/30/98	2343	05/18/98	4750	3072	
47	4432	SPRING CK RES	SPRING CK	07/03/98	0	11/01/97	50	50	
47	4433	MUSKRAT POND	POTTER CK	11/01/97	218	04/28/98	390	218	
TOTAL FOR DISTRICT 47					981		829	27961	

RESERVOIR STORAGE SUMMARIES BY DISTRICT

WD	ID	RESERVOIR	SOURCE STREAM	AMOUNT IN STORAGE (AF)					End of Year
				Minimum		Maximum		Date	
				Date	AF	Date	AF		
54	3519	BOYER RESERVOIR	WILLOW CK, EAST	06/15/98	119	06/15/98	119	119	119
54	3520	B2 RESERVOIR	TRIBUTARIES	09/01/98	25	06/15/98	50	50	25
54	3589	ELK LAKE RES	WILLOW CK	05/06/98	298	06/01/98	398	398	360
54	3591	LAKE FORK RESERVOIR	LAKE FORK CK	08/01/98	30	06/01/98	44	44	30
54	3780	MARTIN CULL RESERVOIR	FOUR MILE CK	08/25/98	0	05/06/98	250	250	0
54	3944	LOWER COGDILL RES	GOVT/CORRAL CK	09/01/98	150	06/22/98	173	173	150
54	3945	UPPER COGDILL RES	GOVT/CORRAL CK	06/23/98	45	06/23/98	45	45	45
54	3946	MCCARGER RES	INDEPENDENCE CK	06/15/98	64	06/15/98	64	64	64
54	3948	SLATER CR LAKE	LAKE CK	06/15/98	0	05/15/98	88	88	0
54	4359	GEORGIU RES	FOUR MILE CK	05/06/98	15	05/06/98	15	15	15
54	4454	MINE DRAW RESERVOIR 3	HOUSEL GULCH	03/27/98	15	03/27/98	15	15	15
TOTAL FOR DISTRICT 54					762		1262		824
56	3710	BASSETT RESERVOIR NO 1	MATT SPRING CK	08/26/98	5	05/24/98	33	33	5
56	3714	MASSEY RESERVOIR	DRY CK of POT CK	07/01/98	0	04/27/98	20	20	0
56	3715	OFFIELD RESERVOIR	POT CK	08/01/98	200	04/27/98	300	300	200
56	3740	BASSETT RESERVOIR NO 2	BULL CANYON	08/26/98	0	05/24/98	54	54	0
56	4452	HOUSE RESERVOIR	ANTONE CANYON	05/01/98	0	04/01/98	20	20	0
TOTAL FOR DISTRICT 56					205		427		205
57	3500	SENECA MINE POND 006	HUBBERSON GULCH	12/01/97	8	04/01/98	16	16	15
57	3501	SEDIMENTATION POND A	FOIDEL CK	11/01/97	65	11/01/97	65	65	65
57	3516	WOLF MOUNTAIN RES	WOLF CK	11/01/97	80	11/01/97	80	80	80
57	3523	PEABODY POND Y-1	SAGE CK	08/31/98	4	05/01/98	5	5	4
57	3541	HUNTER NO 1 RES	MIDDLE CK	11/01/97	1	04/10/98	10	10	1
57	3542	WOLF MOUNTAIN RES 2	WOLF CK	11/01/97	20	11/01/97	20	20	20
57	3543	CAMPSITE RESERVOIR	SMUJIN GULCH	11/01/97	2	11/01/97	2	2	2
57	3549	APPLE RES	DRY FORK	10/31/98	7	04/10/98	10	10	7
57	3550	BASIN RES	BUCHANAN GULCH	11/01/97	0	11/01/97	0	0	0
57	3551	BROCK RESERVOIR	BROCK GULCH	11/01/97	5	11/01/97	5	5	5
57	3555	ECKMAN PARK RES 1	FOIDEL CK	10/31/98	2	11/01/97	4	4	2
57	3560	EMRICH RES	TEMPLE GULCH	10/08/98	25	04/13/98	341	341	25

RESERVOIR STORAGE SUMMARIES BY DISTRICT

WD	ID	RESERVOIR	SOURCE STREAM	AMOUNT IN STORAGE (AF)				End of Year
				Minimum		Maximum		
				Date	AF	Date	AF	
57	3571	JAMES MARION YOAST RES	YOAST GULCH	08/04/98	114	05/27/98	201	144
57	3572	J C TEMPLE RES 1	TEMPLE GULCH	11/01/97	332	03/22/98	454	400
57	3574	MORGAN CREEK RES 1	MORGAN CK	11/01/97	0	05/04/98	110	0
57	3575	NOFSTGER RES	SCOTCHMANS GULCH	11/01/97	1	11/01/97	1	1
57	3576	NOFSTGER ZEIGLER RES	SCOTCHMANS GULCH	10/31/98	55	03/26/98	67	55
57	3582	SEATON RES	MIDDLE FISH CK	11/01/97	0	05/01/98	20	0
57	3583	SHERIFF RES	TROUT CK	11/01/97	987	11/01/97	987	987
57	3585	WHETSTONE RES	WHETSTONE CK	05/01/98	10	04/21/98	24	12
57	3587	YOAST RESERVOIR 1	YOAST GULCH	11/01/97	0	05/27/98	8	0
57	3761	EAST OF MINE SHOP IMPND	GRASSY CK	11/01/97	9	11/01/97	9	9
57	3772	KOWACH RESERVOIR 1	BUCHANAN GULCH	11/01/97	30	05/14/98	33	30
57	3775	COZZENS WALROD RESERVOIR	HUTCHINSON DRAW	10/31/98	20	03/26/98	40	20
57	3786	HAYDEN RAW WATER RES	SAGE CK	11/01/97	1013	11/01/97	1013	1013
57	3793	WADGE PIT RES	GRASSY CK	11/01/97	150	11/01/97	150	150
57	4000	CURTIS GULCH STOCK POND	CURTIS GULCH	10/31/98	35	04/15/98	40	35
TOTAL FOR DISTRICT 57					2983		3723	3090
58	3500	ALLEN BASIN RES	MIDDLE HUNT CK	07/30/98	1305	05/22/98	2250	1428
58	3501	ALMA M BAER RES	FISH CK	11/01/97	3	11/01/97	3	3
58	3503	BISON PARK RES	LAWSON CK	11/01/97	0	05/15/98	50	0
58	3504	BULL PARK RES 2	WATSON CK	11/01/97	0	06/15/98	35	0
58	3505	BURNT MESA RES	SOUTH HUNT CK	11/01/97	50	06/01/98	83	60
58	3506	CHAPMAN RES	LITTLE OAK CK	10/31/98	75	06/25/98	247	75
58	3508	FISH CREEK RES	MIDDLE FK of FISH CK	03/31/98	1257	07/31/98	4167	1493
58	3509	FISH LAKE RES 2	WHEELER, LAKE CK	11/01/97	35	11/01/97	35	35
58	3511	GARDNER PARK RESERVOIR	GARDNER PARK CK	10/31/98	800	05/20/98	1156	800
58	3512	HAHNS PEAK RES	WILLOW CK	11/01/97	601	11/01/97	601	601
58	3513	HEART LAKE RES	WATSON CK	11/01/97	0	06/01/98	222	50
58	3518	LAKE CREEK RES	WHEELER, LAKE CK	11/01/97	292	11/01/97	292	292
58	3519	LAKE WINDEMERE RES	DE CORA GULCH	10/31/98	49	04/28/98	89	49
58	3520	LEE RESERVOIR	CHIMNEY CK OR S FK	11/01/97	3	04/30/98	10	3
58	3521	LESTER CK RESERVOIR	LESTER CK	05/02/98	5574	11/01/97	5657	5600
58	3522	LONG LAKE RES	SOUTH FK of FISH CK	09/15/98	0	07/01/98	357	0
58	3525	MCCHIVVIS RES	WATSON CK	11/01/97	0	06/22/98	191	0
58	3528	MOORE PARK RES	MOORE PARK CK	11/01/97	21	11/01/97	21	21

RESERVOIR STORAGE SUMMARIES BY DISTRICT

WD	ID	RESERVOIR	SOURCE STREAM	AMOUNT IN STORAGE (AF)					
				Minimum		Maximum		End of Year	
				Date	AF	Date	AF		
58	3530	OAK CREEK RES	OAK CK	11/01/97	2	11/01/97	2	2	
58	3532	RAMS HORN RES	HOME CK	11/01/97	122	11/01/97	122	122	
58	3539	SIMON RES 1	MIDDLE HUNT CK	10/21/98	334	05/18/98	1023	375	
58	3540	STILLWATER RES 1	BEAR RIVER	07/27/98	3038	06/05/98	4887	3268	
58	3541	STUCKEY DIST RES	SPRING CK	10/31/98	2	11/01/97	5	2	
58	3544	TRULL CR RES	TRULL CK	11/01/97	5	05/15/98	185	5	
58	3545	BEAR LAKE	BEAR RIVER	11/01/97	620	11/01/97	620	620	
58	3546	WHEELER RES	WHEELER, LAKE CK	11/01/97	37	11/01/97	37	37	
58	3547	WHITELEY NELSON RES	WILSON CK	11/01/97	50	05/08/98	429	50	
58	3551	DEER PARK POND 3	WILLEY CK	09/14/98	4	11/01/97	8	4	
58	3564	OVERMAN RESERVOIR	TRIBUTARIES	09/01/98	0	05/14/98	50	0	
58	3569	FOLLY POND	OAK CK	07/16/98	35	11/01/97	40	35	
58	3571	MYSTIC RESERVOIR 2	TRULL CK	11/01/97	1	11/01/97	1	1	
58	3586	FAIT RESERVOIR	RENFRO CK	11/01/97	4	11/01/97	4	4	
58	3587	UPPER SPRING CK RES	SPRING CK	11/01/97	15	11/01/97	15	15	
58	3596	LODWICK POND	FISH CK	11/01/97	13	11/01/97	13	13	
58	3599	VALENTINE POND	FISH CK	11/01/97	2	11/01/97	2	2	
58	3629	TARZIAN RES 1	FAWN CK	11/01/97	6	11/01/97	6	6	
58	3631	LAKE CATAMOUNT	YAMPA RIVER	03/02/98	5465	05/22/98	8691	7334	
58	3632	HOGUE RES	TRIBUTARIES	11/01/97	5	11/01/97	5	5	
58	3635	ROSSI RESERVOIR 1	MIDDLE HUNT CK	11/01/97	10	11/01/97	10	10	
58	3644	HOLLINGWORTH FISH POND 2	SODA CK	11/01/97	0	11/01/97	0	0	
58	3767	CROWNER RESERVOIR	BEAVER CK of CHIMNEY CK	11/01/97	0	05/19/98	18	0	
58	3770	MARTIN RESERVOIR	MARTIN CK	10/31/98	47	11/01/97	74	47	
58	3771	TILLQUIST LAKE RESERVOIR	MORRISON CK	11/01/97	6	11/01/97	6	6	
58	3787	STEAMBOAT LAKE	WILLOW CK	11/01/97	22036	03/25/98	25581	23064	
58	3788	HOLLINGWORTH FISH POND	SODA CK	11/01/97	2	11/01/97	2	2	
58	3825	UPPER ROBINSON RES	DEER CK	11/01/97	22	04/15/98	23	22	
58	3826	BAR BEE LAKE	BEAVER CK of MORRISON CK	11/01/97	81	11/01/97	81	81	
58	3940	REED RESERVOIR	CHIMNEY CK	07/20/98	5	11/01/97	8	8	
58	4213	STAGECOACH RESERVOIR	YAMPA RIVER	03/01/98	28707	05/01/98	34032	31100	
58	4240	YAMCOLO RES	BEAR RIVER	08/27/98	5856	05/21/98	9720	7249	
58	4362	HENDERSON RES	HENDERSON CK	05/01/98	26	06/01/98	31	28	
58	4376	STEAMBOAT WW RECL RES	TRIBUTARIES	07/15/98	15	08/04/98	44	38	
58	4420	BROOKIE LAKE	WHEELER, LAKE CK	11/01/97	32	11/01/97	32	32	
TOTAL FOR DISTRICT 58					76669		101271	84096	

WATER DIVERSION SUMMARIES

WD	STRUCTURES REPORTING					ALL OTHER STRUCTURES					ESTIMATED NUMBER OF VISITS TO STRUCTURE	TOTAL DIVERSIONS AF	TOTAL DIVERSIONS TO STORAGE AF	TO IRRIGATION		
	With Record Avail 1	No Water Available 2	No Water Taken 3	No Into Available 4	No Record 5	Total Diversions AF	Total Diversions to Storage AF	Total Diversions AF	Number of Acres Irrigated	Average Acre-Feet per Acre						
43	538	0	74	9	1758	4496	795972	0	295516	27183	10.9					
44	253	0	75	2	2478	1434	171489	0	147186	25857	5.7					
47	423	0	23	5	442	3157	397045	6433	382241	115552	3.3					
54	95	0	6	12	374	440	66788	629	65437	14495	4.5					
55	19	0	1	0	336	141	17872	0	17879	1899	9.4					
56	46	3	10	2	680	259	21715	783	22498	2844	7.9					
57	76	0	34	2	599	298	48784	100	38248	9643	4.0					
58	423	0	78	4	1478	2487	236350	620	132360	31629	4.2					
	1873	3	301	36	8145	12712	1756015	8565	1101365	229102	4.8					

Definitions:

- (1) Index on ID with "UNIQUE" on
- (2) Count of structures with NUC=B
- (3) Count of structures with NUC=(A,C,D)
- (4) Count of structures with and NUC=(E,F)
- (5) Count of structures with CIU=U

WATER DIVERSIONS TO VARIOUS USES

USES	WD 43	WD 44	WD 47	WD 54	WD 55	WD 56	WD 57	WD 58	TOTALS
TRANSMOUNTAIN OUT			5284						5284
TRANSBASIN OUT							1817	3643	5460
MUNICIPAL	2320	2166	233				281	3336	8336
COMMERCIAL								13	13
INDUSTRIAL	2447	17293	44				5101	512	25397
RECREATION	652							1730	2382
FISHERY	25491	500	65				1084	8152	35292
DOMESTIC & HOUSEHOLD	653						22	1826	2501
LIVESTOCK	15624		2745	722			2072	12654	33817
AUGMENTATION									0
EVAPORATION									0
GEOHERMAL									0
SNOWMAKING								349	349
MINIMUM STREAMFLOW									0
POWER GENERATION	453557	4344						67748	525649
WILDLIFE									0
RECHARGE									0
OTHER									0
TOTALS	500744	24303	8371	722	0	0	10377	99963	644480

RIVER CALLS - WATER YEAR 1998

CALLING PRIORITY

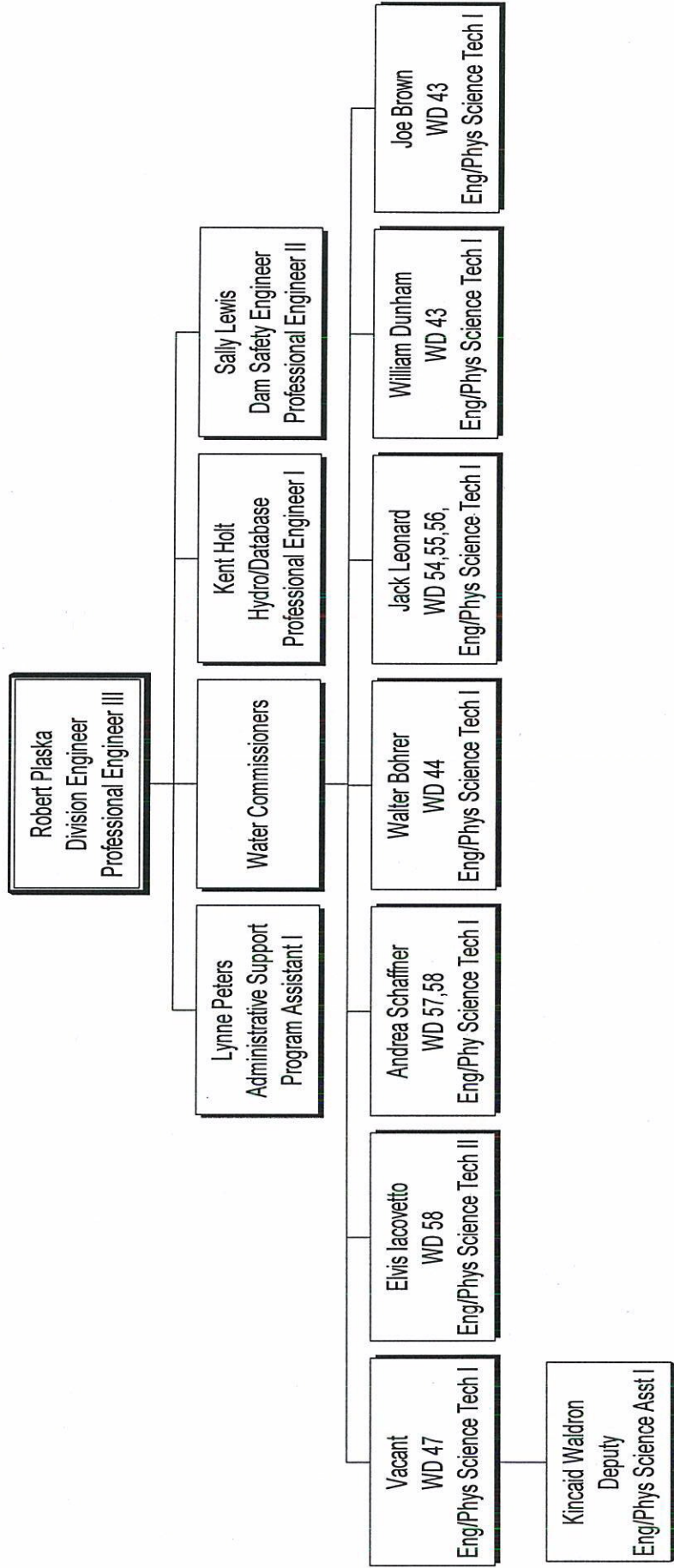
<u>WD</u>	<u>STREAM</u>	<u>STRUCTURE</u>	<u>PERSON CALLING</u>	<u>FIRST</u>	<u>LAST</u>	<u>ADMIN NO.</u>
44	LITTLE BEAR CREEK	LITTLE BEAR DITCH	SIMPSON, JAMES	07/10/97	09/05/97	13797.00000
44	FORTIFICATION CREEK	WISCONSIN DITCH	GRAY, TOMO	07/08/97	10/06/97	14019.00000
47	MICHIGAN RIVER	NORTH PARK #5	GEER, NEWELL	05/20/98	05/22/98	13819.00000
47	MICHIGAN RIVER	KIWA DITCH	TRICK, CARL II	05/21/98	05/22/98	15105.00000
47	MICHIGAN RIVER	KIWA DITCH	TRICK, CARL II	05/30/98	06/06/98	13240.00000
47	MICHIGAN RIVER	KIWA DITCH	TRIC, CARL II	06/12/98	06/15/98	13240.00000
47	ROCK CREEK	DONELSON DITCH	ERHUEL, DONALD	06/14/98	07/03/98	13240.00000
47	ROCK CREEK	SHEAARER DITCH	BRUNDAGE, BRUCE	06/21/98	07/05/98	12908.00000
47	MICHIGAN RIVER	KIWA DITCH	TRICK, CARL II	06/22/98	07/08/98	13240.00000
47	SPRING CREEK	NELLIE E DITCH	HUSTON, O.C.	07/01/98	08/07/98	23016.19722
47	ROCK CREEK	DONELSON DITCH	THOMPSON, BOB	08/11/98	08/20/98	12908.00000
57	WEST FISH CREEK	HIGHLAND DITCH	PEROULIS, ANDY	06/13/98	06/16/98	14501.00000
57	WEST FISH CREEK	HIGHLAND DITCH	PEROULIS, ANDY	09/15/98	10/08/98	14501.00000
58	BEAR RIVER	NICKELL DITCH	PETRINI, RICHARD	05/29/98	07/13/98	12232.00000
58	BEAR RIVER	FIX DITCH	SCHALNUS, JERRY	06/08/98	08/03/98	12198.00000
58	MIDDLE HUNT CREEK	SIMON DITCH	ROSSI, MARK	06/06/98	07/30/98	14032.00000
58	MIDDLE HUNT CREEK	SIMON DITCH	ROSSI, MARK	09/01/98	10/03/98	14032.00000
58	NORTH HUNT CREEK	HIGH MESA IRR DITCH	VIELE, FLOYD	06/23/98	07/21/98	31725.29852
58	NORTH HUNT CREEK	SAGE HEN DITCH	WILLCOCKSON, JOE	07/21/98	07/29/98	14348.00000
58	NORTH HUNT CREEK	LOFON DITCH	MATTSON, BOB	06/26/98	06/30/98	18529.13985

WATER COURT ACTIVITIES
Calendar Year 1998

	<u>Division</u> Five	<u>Division</u> Six
Applications	31	79
Consultations with Referee.....	18	92
Decrees Issued by Court for Water Rights.....	18	82
Dismissals.....	2	2
Complaints.....	0	0
Change of Venue	0	0

<u>TYPE OF RULING</u>	Division V		Division VI	
	<u>No. of Cases</u> or Orders	<u>Structures</u>	<u>No. of Cases</u> or Orders	<u>Structures</u>
Findings of Diligence on Conditional Rights	7	31	15	155
Cancellations of Conditional Rights	3	3	27	28
Conditional Water Rights Made Absolute	0	0	1	1
Surface Water Rights Adjudicated	1	41	38	93
Underground Water Rights Adjudicated	1	2	0	0
Water Storage Rights Adjudicated	2	5	17	61
Plans for Augmentation Adjudicated	0	0	0	0
Changes of Water Rights Adjudicated	2	3	11	19
Instream Flow Rights Adjudicated	0	0	0	0
Abandonment List	1	29	0	0

**Division of Water Resources/Water Division VI
Organizational Chart**



**1998 OFFICE ADMINISTRATION
and WORKLOAD MEASURES**

Professional and Technical Staff	3.00
Administrative Support Staff	1.00
Water Commissioners Assigned	5.50
Wells Permitted	196
Water Court Appearances	6
Meetings with Water Users	30
Meetings to Resolve Water Related Disputes	12
Contacts to Give Public Assistance on Water Rights	14550