

### **Water Supply**

The 2011 Water Year was 115 percent of average for snowpack conditions (as snow water equivalent) as of April 1<sup>st</sup> for the Gunnison River Basin and peaked at 145 percent of average for the season by May 4<sup>th</sup>. Runoff conditions were similar to 2008 runoff in that the weather was mild and there was an average or below average level of dust on snow events during the winter and spring. As a result, the runoff ran later than average and extended natural flow in stream systems.

Similar to 2010, the Gunnison Basin received monsoon related rainfall for a few weeks the end of July and beginning of August. Full reservoirs at the beginning of the irrigation season and the subsequent monsoon rains helped to prevent river calls on the Gunnison River main stem. As it was, the usual dry summer conditions with good irrigation supply resulted in very good hay crops and haying conditions throughout the basin.

### **Surface Water Administration**

District 40 was tightly administered as usual with the call season beginning early spring before runoff, free water during the runoff, and then back on call in July. Most areas of District 40 depend heavily on storage water in Grand Mesa reservoirs, Paonia Reservoir, Crawford Reservoir, and Overland Reservoir to sustain the mid- and late-summer irrigation via direct use of storage water or by exchange. There was ample spring runoff to entirely fill every reservoir in District 40, especially since the carryover in all reservoirs was so good from the previous fall. As stated previously, the monsoon season in late July and early August helped to replenish reservoir levels and natural stream flow sufficiently to temporarily shut off river calls in various systems throughout the basin. Again, carryover storage going into the 2011 irrigation season was above normal, for the sixth year in a row.

The Gunnison Tunnel kept running at maximum capacity, and there was enough flow down the Uncompahgre River to meet water users' needs in the Uncompahgre Valley. The Bureau of Reclamation implemented a plan (reoperation of the storage pool in the Aspinall Unit (Blue Mesa Reservoir) to avoid jeopardy to four endangered fish in the Gunnison and Colorado Rivers downstream from the reservoir. The plan focuses on modifying the operation of the Aspinall Unit to provide sufficient releases of water at times quantities, and duration necessary to avoid adverse modification to designated critical habitat, while maintaining authorized purposes of the Aspinall Unit, such as fish and recreation. This includes maintaining target flows at the Whitewater Gage on the Lower Gunnison. One effect of maintaining these target flows is that it keeps the water right for the Redlands Power and Canal Co. whole, thus alleviating a potential call by that senior water right which is down at the bottom of the stream system.

Drier conditions existed early in the irrigation season on the San Miguel River and its tributaries in District 60. However, the monsoon rains in July and August replenished the natural stream flows to the extent a river call from the Highline Canal was not made until early September, lasting only two weeks. The summer typically produces intense and localized thunderstorms in this part of the basin helping to satisfy senior water rights and reduce the level of river calls.

### **Groundwater Administration**

The Well Permitting Program in Division 4 continues to provide timely issuance of exempt well permits. There were 174 well permits issued within Division 4 during the 2011 water year, a decrease from the 197 permits issued the previous year and a continued indicator of the overall trend in well permitting activity in Division 4. The decreasing trend is likely due to the slowing of development and growth in the local economy and real estate market. 72 of the total 174 permits were exempt well permits issued by Scott King, the Division 4 well commissioner. The remaining 102 non-exempt permits were issued by the Divisions 456 Team staff in Denver in 2010. Our plan is to continue issuing exempt well permits out of this office.

Water District 40 is the largest district and much development relies on individual wells for water supply. Similarly, development and growth in Water Districts 59 and 60 rely on individual wells for water supply. Due to the availability of a treated potable water supply throughout the Uncompahgre Valley, comparatively fewer domestic use wells are drilled in Districts 41 and 68.

All exempt permits were issued out of the Montrose office. Our office has spent a considerable amount of time identifying and correcting information in the well permit database. The Well Commissioner has also undertaken several GIS projects involving this database that is proving very useful in getting parcel information from the counties in a useable form and moving toward replacing the hand drawing process on the paper maps. Use of Aquamap has allowed the Well Commissioner to use GIS parcel data to easily identify parcels that are locked up with a permit. His use of GIS data continues to expand to make him more efficient in approving and tracking well permit applications.

### **Hydrographic Activities**

Div 4 has 25 Satellite Monitoring Stations (SMS). The data from these stations may all be found on the *Colorado's Surface Water Conditions* web site. We cooperate with the US Bureau of Reclamation at four sites and publish two of these. Hydrographer Jerry Thrush continues to provide hydrographic support for this Division. With the assistance of several Water Commissioners, Jerry maintains seven published gages, seven administrative gages and keeps satellite monitoring equipment maintained.

With the help of water commissioners (Stephen Tuck, Doug Wist, Paul Schmucker, Luke Reschke, and James Holiman) a number of projects were completed in water year 2011. A new administrative gage was installed at the bridge over the river at Uncompahgre Road. This gage, in addition to the other new gage installed upstream above the South Canal confluence, will enable us to determine exactly how much water is being delivered to the Uncompahgre River by the South Canal. Some water leaves the canal through unmeasured structures before the canal reaches the Uncompahgre River. This will be very important for low water years when a call by the Uncompahgre Valley Water Users would affect the upper Uncompahgre basin.

A major refurbishment of the USGS stream gaging station, Surface Creek at Cedaredge was completed by Doug Wist, Steve Tuck, Paul Schmucker, Aaron Wagner, Jerry Thrush and James Holiman in October. This gage is of critical importance to Division of Water Resources staff in District 40 for surface water administration decision making. The concrete control at the gage has severely degraded over time critical repairs were needed help maintain the stability of the

stage-discharge relationship at the gage and to preserve the integrity of the structure and keep it from failing catastrophically.

The project cost was estimated at \$4974.95 with all labor provided by DWR. The actual project cost was \$4599.84 and included \$150 for cleaning of the approach channel to the Big Ditch on Surface Creek at Cedaredge gage station 5 ft Parshall Flume. Funding for this project was from DWR Streamgage Refurbishment program funds, a subset of funds requested and made available each year from the CWCB Construction Fund

### **Personnel**

The lead water commissioner in the Cedaredge Office, Jim Boyd retired the end of December 2010. Jim served 22 years as first a deputy water commissioner on Surface Creek in Cedaredge, hired in May of 1988. And, finally as the lead water commissioner at the Cedaredge Field Office, replacing Dick Drexel in 1992. We will all miss Jimmie's leadership, knowledge, and cheery smile.

Doug Wist was promoted to backfill Jim Boyd's vacancy. The vacancy left by Doug Wist's promotion was filled by James Holiman, a deputy water commissioner working out of the Cedaredge Office. As a result, one vacancy remains due to Jim's retirement.

Doug Wist was selected as 2011 water commissioner of the year. Doug has done a marvelous job filling Jim Boyd's shoes as the lead water commissioner managing the Cedaredge Field Office. His fourteen years experience has been invaluable in the transition of leadership at the field office and critical at maintaining excellent customer service.

### **Community Involvement**

Past experience has revealed the extreme importance of having respectful and trusting relationships with the variety of water use organizations and members of the community. Without such trust and respect, this office would have limited effectiveness. Division 4 appears to be somewhat unique, wherein the major water user groups work together with the government organizations for the betterment of the basin. It is a pleasure to be a part of that cooperation.

The Division 4 staff was greatly involved in 2011 with our water users and we see such interaction as an increasingly important part of our responsibility as water stewards. To this end, we frequently attended meetings of the Upper Gunnison River Water Conservancy District, Tri-County Water Conservancy District, North-Fork Water Conservancy District, Uncompahgre Valley Water Users Association and its Board of Directors, Farmers Water Development, Surface Creek Ditch and Reservoir Company, Granby Ditch and Reservoir Company, Big Ditch Company and Park Reservoir Company and other water interest groups.

The Division Engineer consistently attended meetings of the Colorado Water Conservation Board, Southwest Water Conservation District in Durango, US Forest Service, Bureau of Land Management, and the US Bureau of Reclamation. Not only is valuable input offered, there is an opportunity to be informed of many other basin issues potentially affecting this office.

Our public involvement included participation on the Gunnison and San Miguel Basin Roundtables, both for the Statewide Water Supply initiative, or SWSI, and the Interbasin Compact Committee. We have worked closely with both the Executive Director's Office of DNR as well as the Colorado Water Conservation Board in providing a local perspective of basin water issues. We helped identify existing water supplies and pointed out areas where future growth might be faced with water shortages.

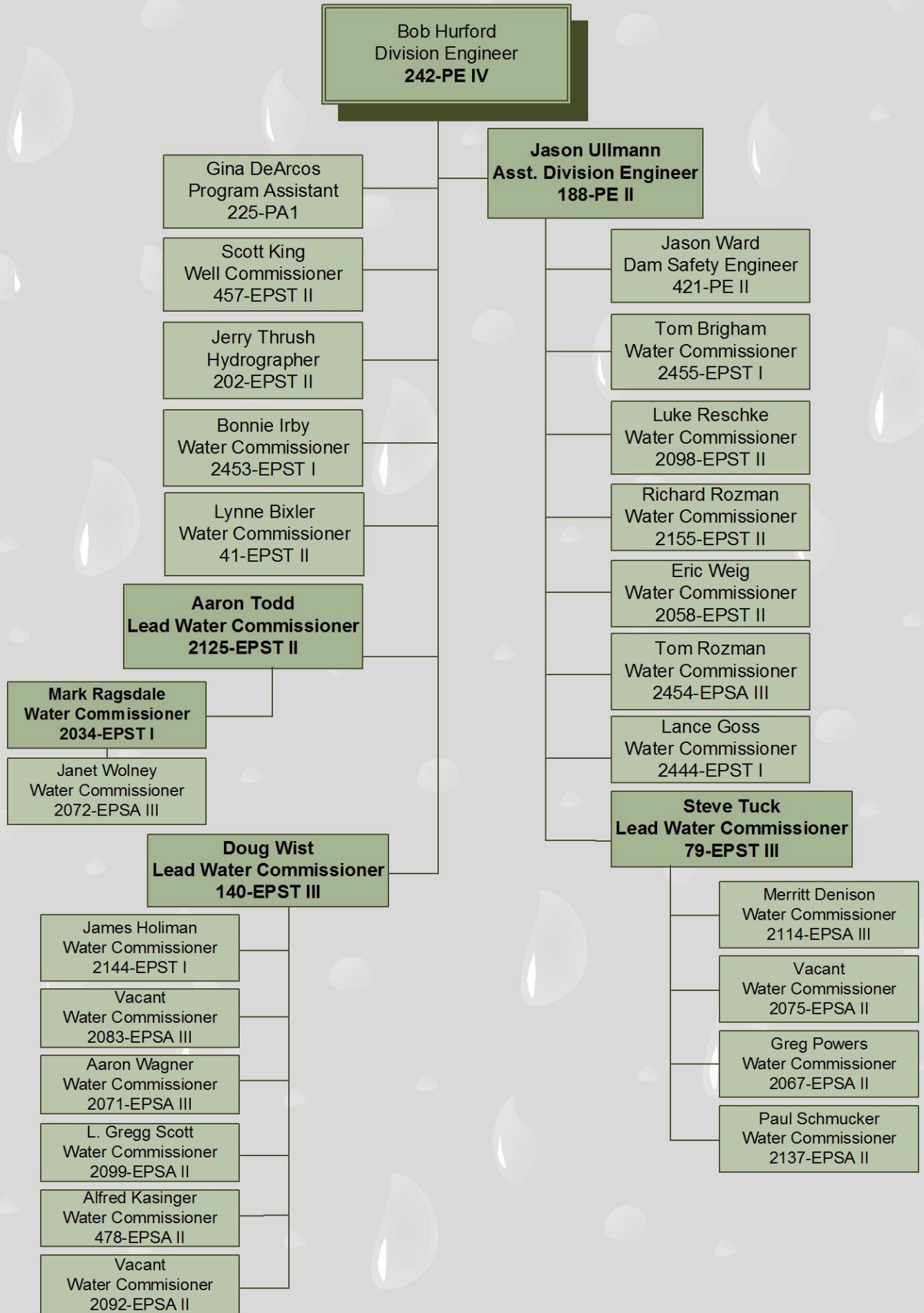
Many Water Commissioners attend local water user meetings in their communities, a practice strongly encouraged by this office. As they are the local water experts in the area, they can provide local knowledge and valuable input.

**2011  
Water Court Activities**

Applications for Decrees	170
Consultations with Referee	191
Decrees Issued by Water Court	175
Dismissals	0
Complaints	0

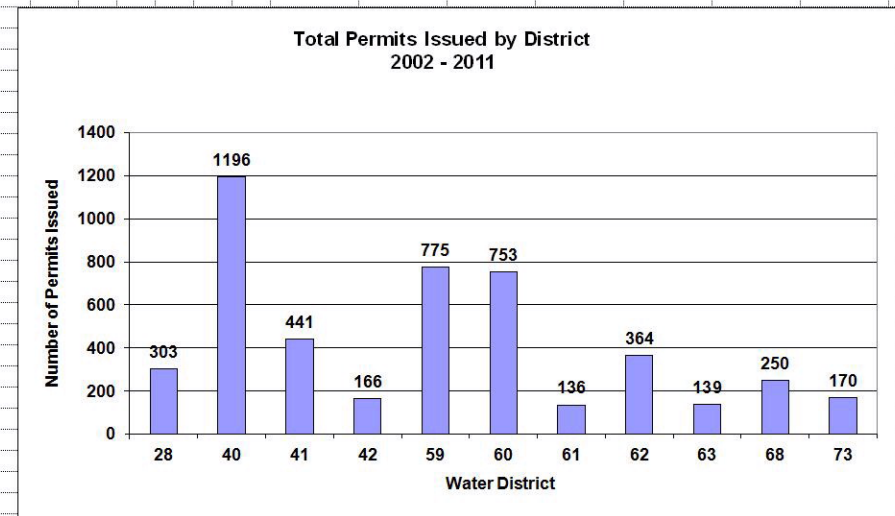
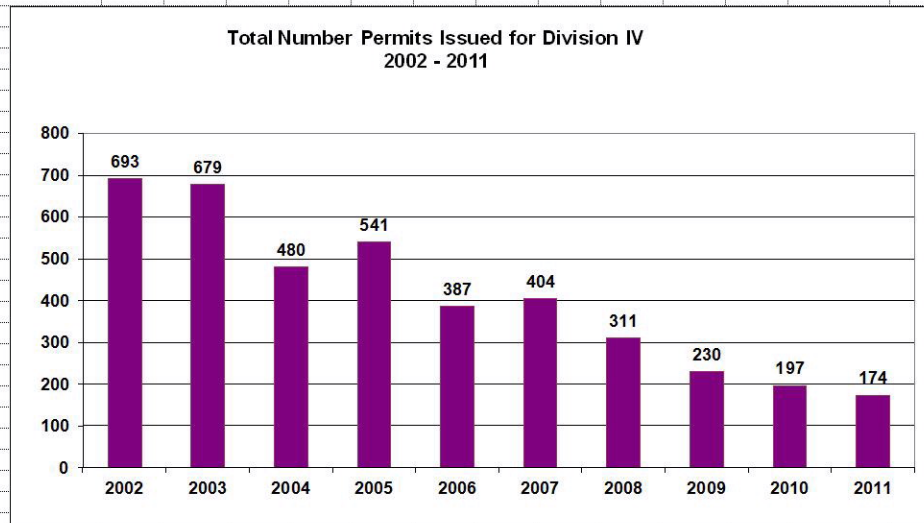
	<u>Structures</u>	<u>Cases</u>
New Conditional Water Rights Filed	61	28
New Absolute Water Rights Filed	129	51
New Diligence on Conditional Rights Filed	105	49
New Change of Water Rights Filed	36	18
New Conditional to Absolute Apps Filed	88	43
New Augmentation Plans Filed	8	8
Cancellations of Conditional Rights	0	0
Underground Water Rights Adjudicated	85	36
Surface Water Rights Adjudicated	221	120
Water Storage Rights Adjudicated	131	56
Plans for Augmentation Adjudicated	12	10
Change of Water Rights / Use Adjudicated	27	18
In-stream Flow Rights Adjudicated	10	10

# Division 4 Water Resources



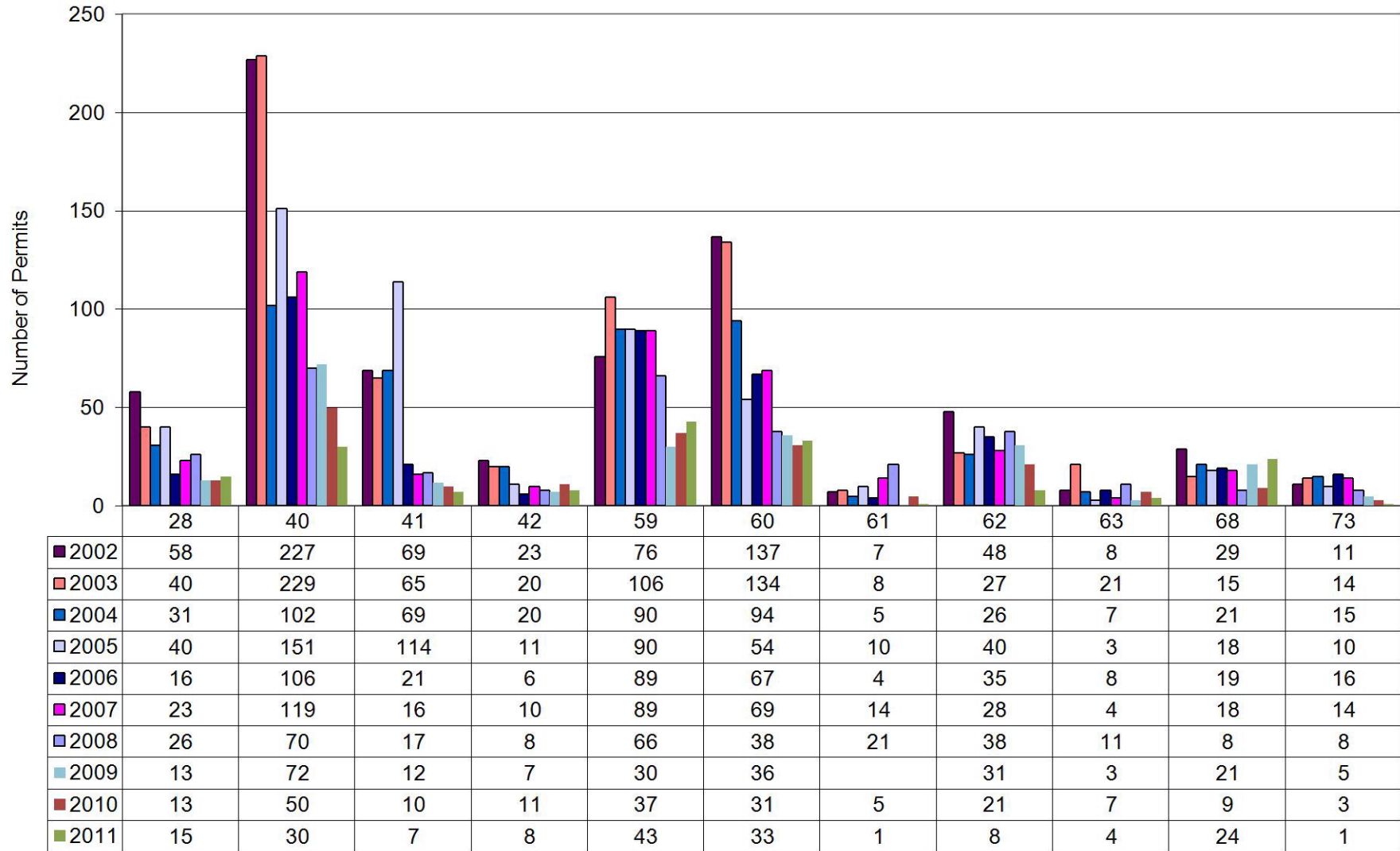
	A	B	C	D	E	F	G	H	I	J	K	L	M	N	O	P	Q	R	S	T	U	V	W	X	Y	Z	AA	AB	AC	AD	AE	AF	AG	AH
1																																		
2																																		
3	Count of PERMITNO	WD																																
4	Year	28	40	41	42	59	60	61	62	63	68	73	Grand Total																					
5	2002	58	227	69	23	76	137	7	48	8	29	11	693	2002	58	227	69	23	76	137	7	48	8	29	11	693								
6	2003	40	229	65	20	106	134	8	27	21	15	14	679	2003	40	229	65	20	106	134	8	27	21	15	14	679								
7	2004	31	102	69	20	90	94	5	26	7	21	15	480	2004	31	102	69	20	90	94	5	26	7	21	15	480								
8	2005	40	151	114	11	90	54	10	40	3	18	10	541	2005	40	151	114	11	90	54	10	40	3	18	10	541								
9	2006	16	106	21	6	89	67	4	35	8	19	16	387	2006	16	106	21	6	89	67	4	35	8	19	16	387								
10	2007	23	119	16	10	89	69	14	28	4	18	14	404	2007	23	119	16	10	89	69	14	28	4	18	14	404								
11	2008	26	70	17	8	66	38	21	38	11	8	8	311	2008	26	70	17	8	66	38	21	38	11	8	8	311								
12	2009	13	72	12	7	30	36		31	3	21	5	230	2009	13	72	12	7	30	36		31	3	21	5	230								
13	2010	13	50	10	11	37	31	5	21	7	9	3	197	2010	13	50	10	11	37	31	5	21	7	9	3	197								
14	2011	15	30	7	8	43	33	1	8	4	24	1	174	2011	15	30	7	8	43	33	1	8	4	24	1	174								
15	Grand Total	303	1196	441	166	775	753	136	364	139	250	170	4096	Total	303	1196	441	166	775	753	136	364	139	250	170	4096								

Number of Well Permits by Water District for past 10 years.





Div IV Permits by WD  
2002-2011





**RESERVOIR STORAGE SUMMARY**  
**IRRIGATION YEAR - 2011**  
**AMOUNT OF STORAGE**

WD	ID	RESERVOIR NAME	SOURCE STREAM	MINIMUM		MAXIMUM		END YR
				AF	DATE	AF	DATE	
28	3590	Hot Springs	Hot Springs Cr	236.4	08/01/11	603.0	05/01/11	313.3
28	3591	McDonough #1	Los Pinos Cr	0.0	10/01/10	805.2	05/01/11	0.0
28	3592	McDonough #2	Los Pinos Cr	29.0	11/01/10	486.0	06/01/10	486.0
28	3593	Needle Creek	Needle Cr	521.2	11/01/10	848.6	05/01/11	674.2
28	3674	Peterson	Razor Cr	60.0	06/01/11	100.0	11/01/10	100.0
28	3594	Upper Dome	Cochetopa Cr	880.2	11/01/10	880.2	11/01/10	880.2
28	3595	Vouga	Razor Cr	460.0	11/01/10	910.0	05/01/11	645.0
40	3300	Alexander Lake	Ward Creek	0.0	11/01/10	157.0	02/15/11	0.0
40	3301	Arch Slough	Ward Cr	18.9	11/01/10	62.6	07/01/11	0.0
40	3412	Ault	Muddy Cr	0.0	11/01/10	116.0	06/01/11	8.0
40	3420	Bailey	Leroux Cr	25.0	09/30/11	430.0	05/01/11	25.0
40	3391	Bald Mountain	Crystal Cr	0.0	11/01/10	89.0	07/05/11	0.0
40	3302	Barren Lake	Kiser Cr	323.2	11/01/10	800.0	06/01/11	800.0
40	3450	Basin #1	Dirty George Cr	0.0	11/01/10	223.0	06/15/11	0.0
40	3451	Basin #2	Dirty George Cr	0.0	09/30/11	51.3	08/01/11	0.0
40	3452	Battlement #1	Dirty George Cr	87.4	11/01/10	87.4	11/01/10	87.4
40	3453	Battlement #2	Dirty George Cr	334.6	10/31/11	650.6	07/01/11	334.6
40	3368	Beaver Dam	Escalante Cr	0.0	10/01/11	220.0	07/22/11	0.0
40	3406	Beaver	Minnesota Cr	88.0	09/08/11	1,567.0	06/20/11	88.0
40	3341	Bonita	Surface Cr	0.0	11/01/10	280.5	05/01/11	280.5
40	3392	Bottle Stomp	Iron Cr	0.0	11/01/10	17.0	08/30/11	0.0
40	3303	Boulder Lake #1	Ward Cr	0.0	11/01/10	0.0	11/01/10	0.0
40	3421	Brockman #1	Leroux Cr	0.0	11/01/10	16.2	06/01/11	0.0
40	3422	Brockman #2	Leroux Cr	0.0	11/02/10	41.1	06/01/11	0.0
40	3413	Bruce Park	Terror Cr	10.0	11/01/10	556.0	06/20/11	37.0
40	3304	Bull Finch #1	Kiser Cr	46.7	09/01/11	72.4	07/01/11	46.7
40	3305	Bull Finch #2	Kiser Cr	9.5	10/01/11	39.2	07/01/11	9.5
40	3342	Cabin Lake	Surface Cr	0.0	11/01/10	14.3	05/01/11	0.0
40	3378	Calumet	Surface Cr	0.0	11/01/10	15.2	05/01/11	0.0

**RESERVOIR STORAGE SUMMARY**  
**IRRIGATION YEAR - 2011**  
**AMOUNT OF STORAGE**

WD	ID	RESERVOIR NAME	SOURCE STREAM	MINIMUM		MAXIMUM		END YR
				AF	DATE	AF	DATE	
40	3366	Carbonate Camp #3	Surface Cr	0.0	11/01/10	0.0	11/01/10	0.0
40	3306	Carbonate Camp #6	Youngs Cr	0.0	11/01/10	129.6	05/01/11	10.6
40	3307	Carbonate Camp #7	Youngs Cr	0.0	11/01/10	107.6	05/01/11	0.0
40	3423	Carl Smith	Leroux Cr	357.0	11/01/10	912.0	06/22/11	714.0
40	3343	Cedar Mesa	Surface Cr	229.0	11/01/10	902.0	05/01/11	511.5
40	3370	Clark	Oak Cr	14.6	10/12/11	43.8	07/13/11	14.6
40	3379	Cole #1	Surface Cr	0.0	11/01/10	26.7	06/01/11	0.0
40	3380	Cole #2	Surface Cr	0.0	11/01/10	42.2	07/01/11	0.0
40	3381	Cole #3	Surface Cr	0.0	11/01/10	60.8	07/01/11	48.2
40	3344	Cole #4	Surface Cr	0.0	11/01/10	2.0	08/01/11	0.0
40	3345	Cole #5	Surface Cr	0.0	11/01/10	116.2	05/01/11	0.0
40	3553	Crawford	Smith Fork	4,218.0	10/21/11	14,230.0	07/08/11	4,277.0
40	3308	Daniels Slough	Kiser Cr	91.0	11/01/10	236.8	07/01/11	236.8
40	3309	Deep Slough	Ward Cr	34.4	11/01/10	464.5	06/01/11	36.8
40	3310	Deep Ward	Ward Cr	525.8	11/01/10	1,700.0	07/01/11	868.8
40	3346	Deserted Park	Surface Cr	0.0	11/01/10	37.7	05/01/11	0.0
40	3424	Dog Fish	Leroux Cr	0.0	11/01/10	243.0	06/01/11	0.0
40	3394	Don Meek #1	Crystal Cr	0.0	11/01/10	0.0	11/01/10	0.0
40	3311	Donnelly Slough	Kiser Cr	245.7	10/31/11	270.7	11/01/10	245.7
40	3382	Doughty #1	Surface Cr	0.0	11/01/10	0.0	11/01/10	0.0
40	3383	Doughty #2	Surface Cr	0.0	11/01/10	0.0	10/01/10	0.0
40	3425	Dowdy	Leroux Cr	25.0	10/11/11	264.0	11/01/10	264.0
40	3347	Dreyfus	Surface Cr	0.0	11/01/10	44.2	05/01/11	5.2
40	3373	Dugger	Oak Cr	57.2	10/12/11	212.1	07/13/11	57.2
40	3414	East Beckwith	Anthracite	110.0	11/01/10	356.0	06/15/11	139.0
40	3312	Eggleston Lake	Kiser Cr	0.0	10/01/11	2,705.0	07/01/11	0.0
40	3348	Elk Park	Surface Cr	38.6	11/01/10	96.8	05/01/11	77.0
40	3427	Elk Wallows	Leroux Cr	0.0	11/01/10	218.0	06/01/11	0.0
40	3426	Ella	Leroux Cr	0.0	11/01/10	98.0	06/01/11	0.0
40	3428	Ellington Cook	Leroux Cr	0.0	11/1/201	24.5	06/01/11	0.0

**RESERVOIR STORAGE SUMMARY**  
**IRRIGATION YEAR - 2011**  
**AMOUNT OF STORAGE**

WD	ID	RESERVOIR NAME	SOURCE STREAM	MINIMUM		MAXIMUM		END YR
				AF	DATE	AF	DATE	
40	3549	Eureka #1	Youngs Cr	0.0	11/01/10	27.1	05/01/11	0.0
40	3349	Eureka #2	Youngs Cr	0.0	11/01/10	53.5	05/01/11	0.0
40	3429	Fairmont Park	Leroux Cr	0.0	11/01/10	30.0	06/01/11	0.0
40	3430	Fairmont	Leroux Cr	0.0	11/01/10	78.0	06/01/11	0.0
40	3350	Fish Lake	Surface Cr	0.0	11/01/10	76.9	05/01/11	16.8
40	3431	Fisher	Leroux Cr	0.0	11/01/10	10.0	06/01/11	0.0
40	3313	Forrest	Ward Cr	47.4	11/01/10	85.7	07/01/11	60.1
40	3365	Fruitgrowers	Alfalfa Run	450.0	10/31/11	3,570.0	04/06/11	450.0
40	3395	Fruitland	Crystal Cr	415.0	11/01/10	8,866.0	06/21/11	1,688.0
40	3314	Goodenough	Kiser Cr	15.6	09/01/11	152.0	05/01/11	15.6
40	3432	Goodenough #2	Leroux Cr	0.0	10/15/11	600.0	06/01/11	0.0
40	3454	Granby #5 - #11	Dirty George Cr	186.0	11/01/10	775.0	07/01/11	502.1
40	3455	Granby# 6	Dirty George Cr	0.0	11/01/10	46.0	05/21/11	0.0
40	3456	Granby #7	Dirty George Cr	0.0	08/30/11	76.1	05/05/11	48.5
40	3457	Granby #8	Dirty George Cr	0.0	06/01/11	13.3	07/01/11	0.0
40	3458	Granby #9	Dirty George Cr	38.3	05/31/11	54.7	06/01/11	41.6
40	3459	Granby #12	Dirty George Cr	505.0	10/31/11	750.6	06/30/11	505.0
40	3433	Gray	Leroux Cr	0.0	11/01/10	423.0	06/01/11	25.0
40	3351	Greenwood	Surface Cr	0.0	11/01/10	66.0	05/01/11	0.0
40	3384	Hale	Surface Cr	0.0	11/01/10	32.6	05/01/11	0.0
40	3435	Hanson #2	Leroux Cr	0.0	11/01/10	225.0	06/01/11	0.0
40	3460	Hartman	Leroux Cr	0.0	11/01/10	10.0	06/01/11	0.0
40	3436	Holy Terror	Terror Cr	0.0	11/01/10	146.0	06/01/11	0.0
40	3315	Hotel Lake	Ward Cr	0.0	08/24/11	548.7	11/01/10	0.0
40	3316	Howard	Kiser Cr	0.0	11/01/10	46.7	07/01/11	0.0
40	3437	Hunt	Leroux Cr	10.0	08/01/11	124.0	06/01/11	10.0
40	3317	Island Lake	Ward Cr	605.7	11/01/10	1,426.4	07/01/11	890.1
40	3352	Kehmeier	Surface Cr	0.0	11/01/10	298.9	05/01/11	237.4
40	3318	Kennicott Slough	Kiser Cr	0.0	11/01/10	1,017.2	07/01/11	916.6
40	3319	Kiser Slough	Surface Cr	179.9	10/31/11	512.0	06/01/11	179.9

**RESERVOIR STORAGE SUMMARY**  
**IRRIGATION YEAR - 2011**  
**AMOUNT OF STORAGE**

WD	ID	RESERVOIR NAME	SOURCE STREAM	MINIMUM		MAXIMUM		END YR
				AF	DATE	AF	DATE	
40	3353	Knox	Surface Cr	0.0	11/01/10	219.5	05/01/11	191.1
40	4520	Leon Lake	Leon Cr	224.6	10/31/11	2,377.8	07/01/11	224.6
40	3385	Leon Park	Surface Cr	0.0	11/01/10	0.0	11/01/10	0.0
40	3320	Lilly Pad	Youngs Cr	0.0	11/01/10	27.7	05/01/11	0.0
40	3321	Little Gem	Ward Cr	170.9	11/01/10	208.5	05/05/11	141.0
40	3386	Little Giant #1	Surface Cr	0.0	11/01/10	44.0	05/01/11	0.0
40	3387	Little Giant #2	Surface Cr	0.0	11/01/10	0.0	11/01/10	0.0
40	3322	Little Grouse	Youngs Cr	0.0	11/01/10	52.5	05/01/11	0.0
40	3407	Lone Cabin	Minnesota Cr	20.0	09/01/11	126.0	05/10/11	20.0
40	3464	Lone Starr	Alkali Cr	100.0	10/29/11	100.0	10/29/11	100.0
40	3714	Lucas Cline	Reynolds Cr	0.0	08/01/11	9.0	05/30/11	0.0
40	3438	Lucky Find	Leroux Cr	0.0	11/01/10	66.0	06/01/11	0.0
40	3388	Marcott Park	Surface Cr	0.0	11/01/10	448.0	06/01/11	47.0
40	3323	McKoon	Youngs Cr	25.5	11/01/10	147.9	05/01/11	147.9
40	3397	Meek	Iron Cr	8.5	10/25/11	29.0	05/31/11	8.5
40	3354	Military Park	Surface Cr	43.3	11/01/10	236.6	05/01/11	236.6
40	3439	Miller	Leroux Cr	0.0	11/01/10	20.0	06/01/11	0.0
40	3408	Monument	Minnesota Cr	0.0	05/04/11	442.0	06/09/11	0.0
40	3374	Morris #2	Oak Cr	6.5	10/12/11	16.3	07/13/11	6.5
40	3597	Oasis	Leroux Cr	150.0	10/29/11	150.0	10/29/11	150.0
40	3399	Overland #1	Muddy Cr	20.0	11/01/10	6,186.0	06/10/11	485.0
40	3440	Owens	Leroux Cr	0.0	11/01/10	92.0	06/01/11	0.0
40	3416	Paonia	Muddy Cr	675.0	10/31/11	15,600.0	08/08/11	675.0
40	3355	Park	Surface Cr	482.7	11/01/10	3,383.4	05/01/11	1,055.4
40	3441	Patterson #1	Leroux Cr	0.0	11/01/10	78.0	06/01/11	0.0
40	3442	Patterson #2	Leroux Cr	70.0	11/01/10	90.0	06/01/11	80.0
40	3473	Paulson	Gunnison R	60.0	10/29/11	60.0	10/29/11	60.0
40	3324	P C & G #1	Kiser Cr	16.1	11/01/10	19.5	07/01/11	16.5
40	3325	Pedro	Youngs Cr	0.0	11/01/10	182.1	05/01/11	41.2
40	3326	Pine	Youngs Cr	0.0	11/01/10	17.1	05/01/11	17.1

**RESERVOIR STORAGE SUMMARY**  
**IRRIGATION YEAR - 2011**  
**AMOUNT OF STORAGE**

WD	ID	RESERVOIR NAME	SOURCE STREAM	MINIMUM		MAXIMUM		END YR
				AF	DATE	AF	DATE	
40	3443	Pine Cone	Leroux Cr	0.0	11/01/10	37.0	06/01/11	0.0
40	3375	Pitcarin	Doughspoon Cr	43.2	10/12/11	76.0	07/13/11	43.2
40	3400	Poison Springs	Gunnison R	97.0	10/25/11	123.0	05/25/11	97.0
40	3376	Porter #1	Oak Cr	17.0	10/12/11	214.8	07/13/11	17.0
40	3377	Porter #4	Oak Cr	0.0	10/31/11	23.0	07/13/11	0.0
40	3327	Prebble	Youngs Cr	0.0	10/31/11	193.1	05/01/11	193.1
40	3409	Reynolds	Reynolds Cr	40.0	10/07/11	100.0	05/28/11	40.0
40	3444	Reynolds	Leroux Cr	0.0	11/01/10	176.0	06/01/11	0.0
40	3445	Rex	Terror Cr	0.0	11/01/10	10.0	06/01/11	0.0
40	3328	Rim Rock Lake	Ward Cr	0.0	11/01/10	107.9	05/05/11	0.0
40	3329	Rockland	Ward Cr	0.0	10/01/11	13.0	08/01/11	0.0
40	3401	Rockwell #1	Iron Cr	41.0	11/01/10	118.0	05/30/11	104.0
40	3410	Roeber #2	Reynolds Cr	0.0	07/01/11	44.0	05/28/11	0.0
40	3356	Round Lake	Surface Cr	0.0	11/01/10	15.0	06/01/11	0.0
40	3357	Sackett	Surface Cr	17.7	11/01/10	108.0	05/01/11	108.0
40	3331	Safety #1 & #2	Kiser Cr	0.0	11/01/10	20.3	07/01/11	0.0
40	3332	Scotland Peak	Ward Cr	91.2	11/01/10	154.9	07/01/11	134.0
40	3333	Sheep Lake	Ward Cr	154.0	11/01/10	154.0	11/01/10	154.0
40	3446	Skim Milk	Leroux Cr	0.0	11/01/10	90.0	06/01/11	0.0
40	3544	Skinned Horse Lake	Ward Cr	12.5	11/01/10	68.2	07/01/11	18.8
40	3417	Spatafora	Muddy Cr	0.0	11/01/10	60.0	05/18/11	0.0
40	3358	Stell	Surface Cr	0.0	11/01/10	65.0	05/01/11	65.0
40	3418	Tomahawk	Muddy Cr	15.0	11/01/10	89.0	06/20/11	22.0
40	3389	Trickle	Surface Cr	0.0	11/01/10	32.7	05/01/11	0.0
40	3359	Trio	Surface Cr	0.0	11/01/10	164.3	05/01/11	97.3
40	3360	Twin Lakes #1	Surface Cr	0.0	11/01/10	53.5	08/01/11	53.5
40	3361	Twin Lakes #2	Surface Cr	0.0	11/01/10	120.8	05/01/11	120.8
40	3403	Tyler	Iron Cr	98.0	11/01/10	169.0	05/31/11	120.0
40	3466	Upper Eggleston	Kiser Cr	127.2	11/01/10	232.5	05/04/11	232.5
40	3334	Upper Hotel Lake	Ward Cr	64.1	11/01/10	109.1	07/01/11	79.3

**RESERVOIR STORAGE SUMMARY**  
**IRRIGATION YEAR - 2011**  
**AMOUNT OF STORAGE**

WD	ID	RESERVOIR NAME	SOURCE STREAM	MINIMUM		MAXIMUM		END YR
				AF	DATE	AF	DATE	
40	3362	Vela	Surface Cr	251.3	11/01/10	436.6	05/01/11	381.1
40	3335	Ward Creek	Ward Cr	53.7	10/31/11	284.4	06/01/11	53.7
40	3447	Wash Tub	Leroux Cr	0.0	11/01/10	25.0	06/01/11	0.0
40	3448	Water Bug	Leroux Cr	0.0	11/01/10	40.0	06/01/11	0.0
40	3363	Weir & Johnson #2	Surface Cr	25.9	11/01/10	616.9	05/01/11	544.2
40	3364	Weir Park	Surface Cr	0.0	11/01/10	40.7	05/01/11	0.0
40	3411	West	Jay Cr	300.0	10/31/11	454.0	06/01/11	300.0
40	3419	Williams Creek Lake	Muddy Cr	15.0	11/01/10	100.0	06/20/11	20.0
40	3449	Willow	Leroux Cr	0.0	11/01/10	128.0	06/01/11	0.0
40	3336	Womack #1	Ward Cr	0.0	11/01/10	195.5	07/01/11	165.1
40	3337	Womack #2 & #3	Cottonwood Cr	0.0	11/01/10	156.3	07/01/11	76.4
40	3340	Womack #5	Cottonwood Cr	0.0	11/01/10	33.5	06/01/11	0.0
40	3390	Y & S	Surface Cr	0.0	11/01/10	188.6	07/01/11	110.6
40	3338	Young Creek #1	Youngs Cr	123.7	09/01/11	344.9	05/01/11	123.7
40	3339	Youngs Creek #3	Youngs Cr	130.0	09/01/11	200.6	05/01/11	130.0
42	3600	Anderson #1	Kannah Cr	0.0	11/01/10	621.0	09/21/11	0.0
42	3601	Anderson #2	Kannah Cr	0.0	10/19/11	542.0	09/01/11	0.0
42	3630	Anderson #6	Kannah Cr	0.0	11/01/10	118.5	06/30/11	0.0
42	3602	Bolen A & J #2	Kannah Cr	0.0	11/01/10	233.0	06/30/11	0.0
42	3603	Bolen	Kannah Cr	0.0	11/01/10	537.0	08/01/11	0.0
42	3604	Carson Lake	Kannah Cr	653.0	11/01/10	653.0	06/30/11	653.0
42	3626	Cheney	King Cr	100.0	05/31/11	362.0	08/02/11	295.0
42	3606	Deep Creek #2	Kannah Cr	0.0	11/01/10	353.0	06/30/11	0.0
42	3607	Dry Creek Supply	Kannah Cr	0.0	11/01/10	237.0	06/30/11	0.0
42	3608	Flowing Park	Kannah Cr	758.0	11/01/10	758.0	06/30/11	758.0
42	3609	Fruita #1	East Cr	12.0	11/01/10	170.0	06/09/11	135.0
42	3610	Fruita #2	East Cr	3.5	11/01/10	185.0	05/16/11	73.0
42	3644	G H & S #2	East Cr	248.0	11/01/10	248.0	06/30/11	248.0
42	3614	Grand Mesa #1	Kannah Cr	0.0	11/01/10	570.0	06/23/11	14.0

**RESERVOIR STORAGE SUMMARY**  
**IRRIGATION YEAR - 2011**  
**AMOUNT OF STORAGE**

WD	ID	RESERVOIR NAME	SOURCE STREAM	MINIMUM		MAXIMUM		END YR
				AF	DATE	AF	DATE	
42	3615	Grand Mesa #6	Kannah Cr	0.0	11/01/10	204.0	07/31/11	0.0
42	3616	Grand Mesa #8	Kannah Cr	0.0	11/01/10	378.0	06/30/11	0.0
42	3617	Grand Mesa #9	Kannah Cr	0.0	11/01/10	151.0	06/30/11	0.0
42	3618	Hallenbeck #1	Kannah Cr	73.0	11/01/10	704.0	06/30/11	277.0
42	3619	Hallenbeck #2	Kannah Cr	0.0	11/01/10	459.0	07/14/11	96.0
42	3620	Juniata	Kannah Cr	6303.0	11/30/10	7276.0	03/31/11	6913.0
42	3652	King Lake	East Cr	319.0	11/01/10	319.0	06/30/11	319.0
42	3623	Scales #1	Kannah Cr	0.0	11/01/10	203.0	06/30/11	0.0
42	3624	Scales #3	Kannah Cr	0.0	11/01/10	129.0	06/30/11	0.0
42	3625	Somerville #1	Whitewater Cr	0.0	11/01/10	933.0	07/05/11	49.0
59	3684	Lake Grant	Slate R	264.0	10/19/11	282.0	05/26/11	264.0
59	3689	Meridian Lake Park	Washington Gulch	192.5	05/25/11	192.5	05/25/11	192.5
59	3663	Meridian Lake	Washington Gulch	363.0	10/30/11	471.0	06/04/11	363.0
59	3665	Spring Creek	Taylor R	1,270.0	10/20/11	1,631.0	06/02/11	1,270.0
59	3666	Taylor Park	Taylor R	61,077.0	05/31/11	98,437.0	06/30/11	69,133.0
60	3507	Gurley	Maverick Dr	422.0	11/01/10	8,719.0	06/13/11	2,039.0
60	3510	Lilylands	Naturita Cr	134.7	07/12/11	494.0	06/06/11	134.7
60	3511	Lone Cone	Naturita Cr	215.0	07/11/11	1,840.0	06/06/11	215.0
60	3512	Miramonte	Naturita Cr	5,200.0	10/31/11	6,567.0	04/20/11	5,200.0
60	3519	Paxton	Horsefly Cr					
60	3527	Trout Lake	Lake Fork	1,077.0	03/06/11	3,191.0	06/24/11	3,178.0
61	3551	Buckeye	Buckeye Cr	426.0	11/01/10	2,414.0	06/22/11	786.0
62	3532	Blue Mesa	Gunnison R	476,767.0	04/30/11	805,855.0	07/31/11	643,516.0
62	3578	Crystal	Gunnison R	13,196.0	07/31/11	16,920.0	06/30/11	15,977.0
62	3545	Morrow Point	Gunnison R	107,503.0	09/30/11	113,927.0	05/31/11	109,890.0
62	3548	Silverjack	Big Cimarron R	1,882.0	11/30/10	13,306.0	06/30/11	4,005.0



**RESERVOIR STORAGE SUMMARY**  
**IRRIGATION YEAR - 2011**  
**AMOUNT OF STORAGE**

WD	ID	RESERVOIR NAME	SOURCE STREAM	MINIMUM AF	DATE	MAXIMUM AF	DATE	END YR
63	3643	Casto	Gill Cr	296.7	11/01/10	1,030.4	06/28/11	302.3
63	3644	Craig #1	West Cr	137.2	10/04/11	623.2	04/28/11	166.8
63	3640	Craig #2	Gill Cr	407.2	11/01/10	630.7	06/07/11	627.3
68	3847	Cornerstone #4	Horsefly Cr	40.1	04/01/11	126.5	06/01/11	116.9
68	3675	Ridgway	Uncompahgre R	57,210.0	05/01/11	83,381.0	08/01/11	68,999.0
73	3611	Carns #1	Hill Cr	0.0	11/01/10	10.7	05/25/11	6.0
73	3612	Duvall #1	Chiquito Dolores R	31.5	09/07/11	102.4	06/14/11	31.6
73	3621	Fruita #3	Chiquito Dolores R	45.9	06/14/11	45.9	06/14/11	45.9
73	3602	Green Shaft	Clark Wash	0.0	11/01/10	25.0	05/10/11	0.0
73	3609	Thompson #2	Trail Canyon Wash	0.0	11/01/10	10.0	05/10/11	10.0

	A	B	C	D	E	F	G	H	I
1	40	3412	Ault Res	Muddy Cr					
2	40	3420	Bailey Res	Leroux Cr					
3	40	3391	Bald Mt Res	Crystal Cr					
4	40	3406	Beaver Res	Minnesota Cr					
5	40	3392	Bottle Stomp R	Iron Cr					
6	40	3421	Brockman 1 R	Leroux Cr					
7	40	3422	Brockman 2 R	Leroux Cr					
8	40	3413	Bruce Park Res	Terror Cr					
9	40	3423	Carl Smith R	Leroux Cr					
10	40	3553	Crawford Res	Smith Fork					
11	40	3424	Dog Fish Res	Leroux Cr					
12	40	3394	Don Meek 1	Crystal Cr					
13	40	3425	Dowdy Res	Leroux Cr					
14	40	3414	East Beckwith	Anthracite					
15	40	3427	Elk Wallows R	Leroux Cr					
16	40	3426	Ella Res	Leroux Cr					
17	40	3428	Ellington Cook	Leroux Cr					
18	40	3429	Fairmont Park	Leroux Cr					
19	40	3430	Fairmont Res	Leroux Cr					
20	40	3431	Fisher Res	Leroux Cr					
21	40	3365	Fruitgrowers	Alfalfa Run					
22	40	3395	Fruitland Res	Crystal Cr					
23	40	3432	Goodenough #2 Res	Leroux Cr					
24	40	3433	Gray Res	Leroux Cr					
25	40	3435	Hanson #2 Res	Leroux Cr					
26	40	3460	Hartman	Leroux Cr					
27	40	3436	Holy Terror R	Terror Cr					
28	40	3437	Hunt Res	Leroux Cr					
29	40	3884	Kathy's Res	Muddy Cr					
30	40	3883	Kathy's Res No1	Muddy Creek					
31	40	3407	Lone Cabin R	Minnesota Cr					
32	40	3464	Lone Starr Res.	Gunnison River					
33	40	3714	Lucas Cline R	Reynolds					
34	40	3438	Lucky Find Res	Leroux Cr					
35	40	3397	Meek Res	Iron Cr					
36	40	3439	Miller Res	Leroux Cr					
37	40	3408	Monument Res	Minnesota Cr					
38	40	3399	Overland Res 1	Muddy Cr					
39	40	3440	Owens Res	Leroux Cr					
40	40	3416	Paonia Res	Muddy Cr					
41	40	3441	Patterson #1 Res	Leroux Cr					
42	40	3443	Pine Cone Res	Leroux Cr					
43	40	3400	Poison Spr Res	Gunnison R					
44	40	3445	Rex Res	Terror Cr					
45	40	3409	Reynolds Res	Bell Creek					
46	40	3444	Reynolds Res	Leroux Cr					
47	40	3401	Rockwell Res No1	Iron Cr					
48	40	3410	Roeber Res	Reynolds					
49	40	3446	Skim Milk	Leroux Cr					
50	40	3417	Spatafora Res	Muddy Cr					
51	40	3418	Tomahawk Res	Muddy Cr					
52	40	3403	Tyler Res	Iron Cr					
53	40	3447	Wash Tub Res	Leroux Cr					
54	40	3448	Water Bug Res	Leroux Cr					
55	40	3411	West Res	Jay Cr					
56	40	3419	Williams Cr Lake	Muddy Cr					
57	40	3449	Willow Res	Leroux Cr					

Count of Combined #	WD										Grand Total
Year	28	40	41	42	59	60	61	62	63	68	Grand Total
2001	7	18		4	17	7		4	2	2	61
2002	3	15		1	8	12	1	1	1	1	43
2003	16	26		1	13	7	1	1	5	2	72
2004	8	7		2	16	6		4		2	45
2005	13	7			19	5	2	14			60
2006	5	9	1	1	21	8		11		3	59
2007	3	11	1		17	5		4		1	42
2008	4	17			19	6	5	14		2	67
2009	4	10	1		6	2		7			30
2010	1	5	2		9	4	3	9	1	3	37
2011		12	1	1	15					73	102
Grand Total	64	137	6	10	160	62	12	69	9	89	618

618

**Number of Well Permits (Issued per Augmentation Plans) by Water District for past 10 years.**

**Division 4 2010 River Calls**

Stream Affected	Name of Calling Structure	Admin # of Calling Structure	Date of Call	Duration of Call	Person Placing Call	Most Senior Curtailed Structure	Admin # of the Most Senior Curtailed Structure
-----------------	---------------------------	------------------------------	--------------	------------------	---------------------	---------------------------------	--

**Water District 28**

Razor Creek	Hirdman 3	10737.00000	6/13/2011	6/24/2011	Greg Peterson	Snyder Ditches No. 1 & 2	11109.00000
Razor Creek	Kennedy No 1 & 2	10301.00000	6/13/2011	6/24/2011	Greg Peterson	Snyder Ditches No. 1 & 2	11109.00000
Razor Creek	Hirdman Ditch 1,2,3	10743.00000	6/13/2011	6/24/2011	Greg Peterson	Snyder Ditches No. 1 & 2	11109.00000

**Water District 40**

Minnesota Creek	Minnesota Canal	14413.13758	7/18/2011	Irrigation	Willie Kistler	Turner Ditch	21263.17451
Roatcap Creek	Roberts Stucker Ditch	25807.23557	7/18/2011	Irrigation	Steve Walcott	Overland Ditch	58264.00000
Minnesota Creek	Minnesota Canal	12178.00000	9/13/2011	Irrigation	Willie Kistler	Turner Ditch	14413.12283
German Creek	( German Ck. Spgs Collection Sys. Meyer & Orth 1889 decree )	12398.00000	9/1/2011	Irrigation season	Scott Leon	Eubank & Garner Ditch	13911.00000
Anthracite Creek	JDL Layton Gulch W W D.	57259.00000	7/1/2011	Irrigation season	John Lee	Bear Ranch Pumps	non decreed industrial user
Terror Creek	Terror Ditch	14413.12764	7/5/2011	Irrigation	Richard Ruden	Overland D Terror Cr.	25301.00000
Terror Creek	Terror Ditch Extension	16072.00000	7/5/2011	Irrigation	Richard Ruden	Overland D Hubbard Cr.	25301.00000
Muddy Creek	Homestead Ditch	21427.00000	7/20/2011	Irrigation	Joe Sperry	Gib Hutchens Ditch	42550.00000
Terror Creek	Holybee Ditch	12370.00000	7/20/2011	Irrigation	Jason Trimm	Overland D Terror Cr.	25301.00000
Muddy Creek	Drift Creek ditch	24894.21014	7/30/2011	Irrigation	Joe Sperry	Lost Cabin Ditch	24894.23922
Deep Creek	Filmore Ditch	29260.25001	8/2/2011	Irrigation	Aaron Miller	Elk Horn Stomp Ditch	38481.00000
Muddy Creek	Larson Ditch	29260.21350	8/2/2011	Irrigation	Peter Blake	Twin Spruce Ditch	29260.22431
North Fork River	Fire Mountain Canal	31924.31197	8/7/2011	Irrigation	Tray Denison	Somerset Water Sup.	36144.00000
North Fork River	Paonia Ditch	29260.18730	8/7/2011	Irrigation	Olin Lund	Fire Mountain Canal	31924.31197
Hubbard Creek	Deer Trail Ditch	14915.00000	8/11/2011	Irrigation	Bob Barns	Overland Ditch	25301.00000
Muddy Creek	Ditch No3	21263.17335	8/13/2011	Irrigation	Joe Sperry	Divide Creek Feeder D	23927.00000
North Fork River	Fire Mountain Canal	21701.00000	8/14/2011	Irrigation	Tray Denison	Stewart Ditch	22370.00000
North Fork River	Homestead Ditch	21127.00000	8/26/2011	Irrigation	Joe Sperry	Fire Mountain Canal	21701.00000
North Fork River	Fire Mountain Canal	19415.17059	9/12/2011	Irrigation	Tray Denison	Overland Ditch	21263.15919
Smith Fork Gunnison	Crawford Clipper Ditch	19413.16893	7/18/2011	Irrigation	Gary Kraai	Saddle Mountain Highline	21263.18788

**Division 4 2010 River Calls**

Stream Affected	Name of Calling Structure	Admin # of Calling Structure	Date of Call	Duration of Call	Person Placing Call	Most Senior Curtailed Structure	Admin # of the Most Senior Curtailed Structure
Smith Fork Gunnison	Crystal Valley Ditch	21263.14010	7/18/2011	Irrigation	Don Meek	Dyer Fork Ditch	21263.18762
Smith Fork Gunnison	Fluke Ditch	12327.00000	7/28/2011	Irrigation	Luther Pipher	Georgia Ditch	12493.00000
Smith Fork Gunnison	Fluke Ditch	12327.00000	7/28/2011	Irrigation	Luther Pipher	Georgia Ditch	12493.00000
Smith Fork Gunnison	Crawford Clipper Ditch	19413.12519	8/8/2011	Irrigation	Gary Kraai	Daisy Ditch	19413.13696
Smith Fork Gunnison	Crawford Clipper Ditch	13076.00000	8/8/2011	Irrigation	Gary Kraai	Needle Rock Ditch	14077.00000
Smith Fork Gunnison	Cedar Canyon Iron Spgs. Ditch	12350.00000	8/9/2011	Irrigation	Don Meek	Crystal Valley Ditch	21263.14010
Gunnison River Trib.	Crystal Springs Ranch D	48759.00000	11/1/2010	Irrigation	John Stroh	Chipeta Spring #1	54855.00000
Leroux Creek	Leroux Creek Ditch	12285.00000	7/2/2011	Irrigation	Mark Smith	Overland Ditch	21089.15919
Leroux Creek	Stull Ditch	21089.15502	7/6/2011	Irrigation	Mark Smith	Patterson Ditch	21089.15797
Leroux Creek	Cow Creek Ditch	12276.00000	7/6/2011	Irrigation	Mark Smith	Leroux Creek Ditch	21089.14413
Leroux Creek	Currant Creek Ditch	12269.00000	7/6/2011	Irrigation	Mark Smith	Leroux Creek Ditch	21089.14413
<b>Water District 41</b>							
Horsefly Creek	Albush Ditch	24221.22524	4/1/2011	6/17/2011	Randy Sanders	Tierra Colorado Ditch	27184.21672
<b>Water District 42</b>							
Kannah Creek	Grand Jct FL &WW	30895.28975	11/1/2011	4/1/2011	Slade Connell	Juniata 1st Enlgd	52950.00000
Kannah Creek	Grand Jct FL &WW	11687.00000	4/1/2011	10/31/2011	Slade Connell	Kannah Creek Ext. Ditch	12724.00000
Kannah Creek	Kannah Creek Ext. Ditch	11688.00000	4/28/2011	5/4/2011	Ed Gardner	Northwestern	13007.00000
Kannah Creek	Kannah Creek Ext. Ditch	11688.00000	9/2/2011	10/31/2011	Ed Gardner	Northwestern	13007.00000
<b>Water District 59</b>							
Washington Gulch	Breem Ditch	18394.00000	8/23/2011	9/2/2011	Mike Billingsley	Willson Ditch	18759.00000
<b>Water District 60</b>							
Basin Ck aka Dry Ck	Craver Ditch	24379.23193	5/7/2011	10/31/2011	James Boulden	Plateau Basin Ditch	32811.29324
Naturita Creek	Grove Ditch	12205.00000	7/5/2011	10/31/2011	Charles Hughes	Lone Cone Ditch	15279
San Miguel River	Nucla Power Plant Ditch	13058.00000	9/6/2011	9/9/2011	Paul Castle	Highline Canal	23681.21526
S Fork San Miguel	Wagner Ditch	16969.00000	8/24/2011	10/31/2011			

**Division 4 2010 River Calls**

Stream Affected	Name of Calling Structure	Admin # of Calling Structure	Date of Call	Duration of Call	Person Placing Call	Most Senior Curtailed Structure	Admin # of the Most Senior Curtailed Structure
Maverick Draw	Gurley Ditch	52595.12570	11/1/2011	5/16/2011	Dave Alexander		
<b>Water District 61</b>							
No Calls							
<b>Water District 62</b>							
Little Cimarron River	Collier Ditch	14489.00000	8/19/2011	10/31/2011	Steve Hoekstra	McKinley Ditch	20393.20218
<b>Water District 63</b>							
No Calls							
<b>Water District 68</b>							
Dallas Creek	Dallas Creek MSF	54250.00000	9/6/2011	9/15/2011	Linda Basse	Wood Perry Ditch	54786.49460
Horsefly Creek	Albush Ditch	24221.22524	4/11/2011	6/17/2011	Randy Sanders	Tierra Colorado Ditch	27184.21672
Horsefly Creek	Tierra Colorado Ditch	27184.21672	4/11/2011	6/17/2011	Mina Voss	Williams D Nos. 1,2&3	29554.23861
<b>Water District 73</b>							
No Calls							