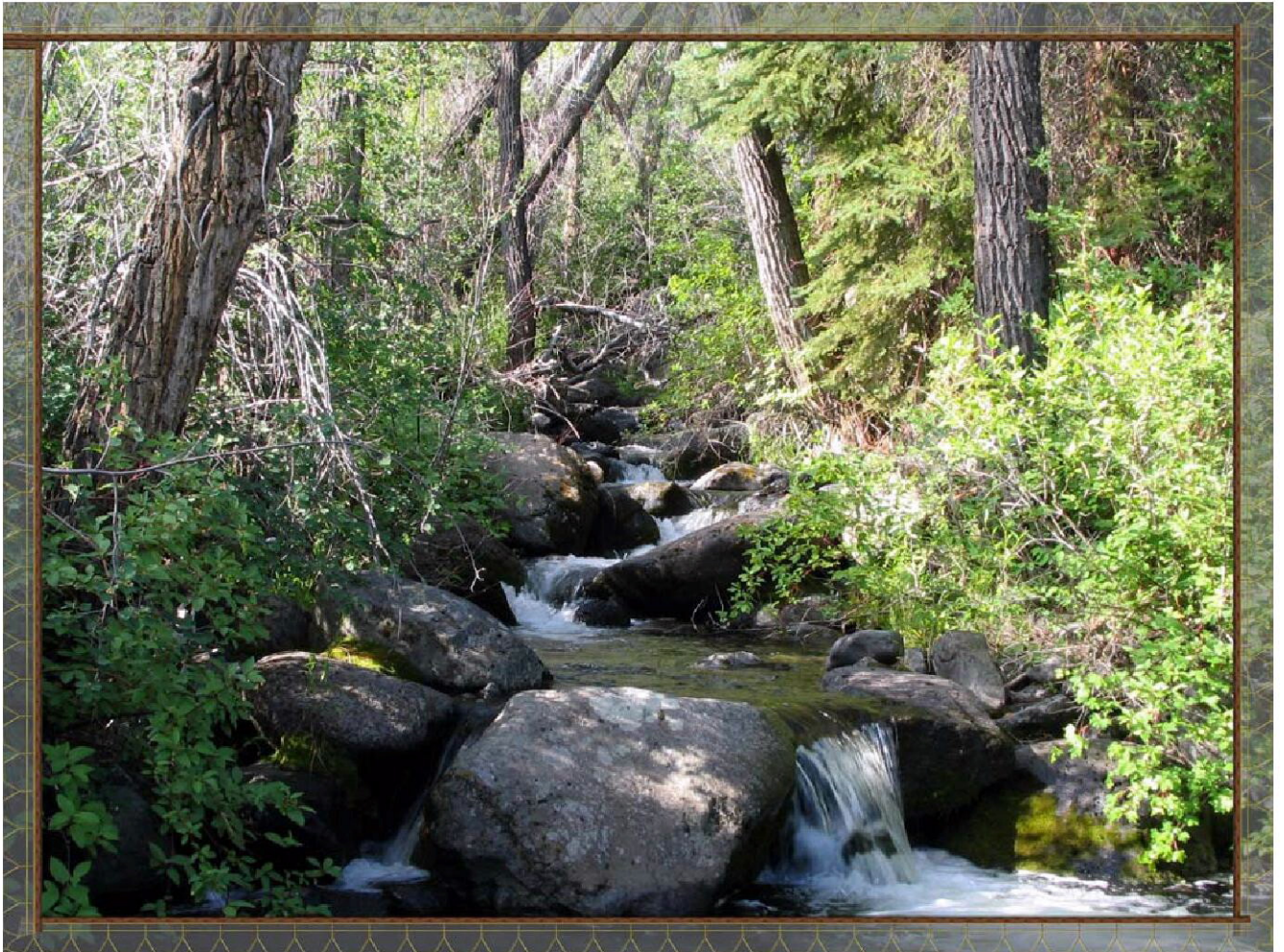


ANNUAL REPORT

DIVISION 4



2004



**COLORADO DIVISION OF WATER RESOURCES
ANNUAL REPORT
DIVISION 4 - 2004**

INDEX

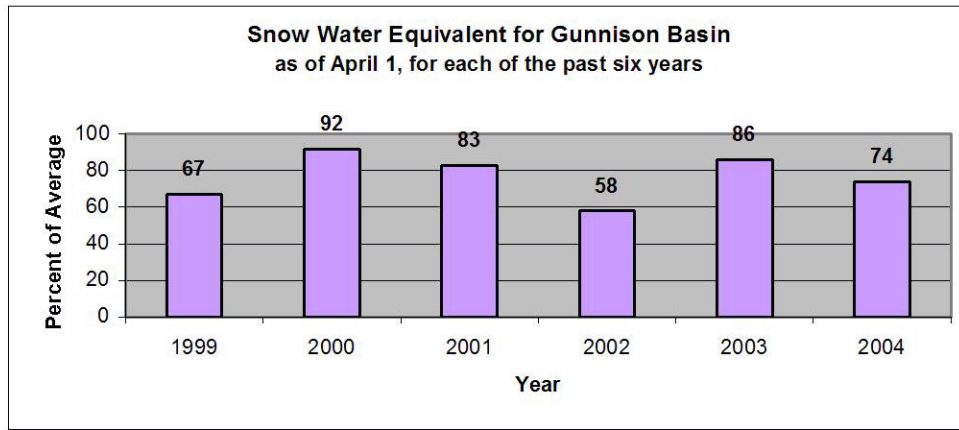
<u>Topic</u>	<u>Page</u>
<u>Accomplishments</u>	
Water Administration.....	1
Personnel.....	4
Budget.....	5
Hydrography	5
Dam Safety.....	7
Groundwater	7
Records and Information.....	8
Special Projects.....	8
Court Hearings and Consultations	8
<u>Significant Water Issues</u>	9
<u>Involvement With The Community</u>	10
<u>Influential Case Law, Statutes, and Projects</u>	11
<u>Greater Efficiency in Division 4</u>	13
<u>Tabular Data</u>	
Transmountain Diversions	15
Storage Summaries	16
Water Diversion Summaries.....	30
Water Court Activities	33
River Calls	34
<u>Table of Organization - Personnel</u>	42
<u>Office Administration and Workload Measures</u>	43

Note: Cover Photo – Cottonwood Creek, WD 42

ACCOMPLISHMENTS

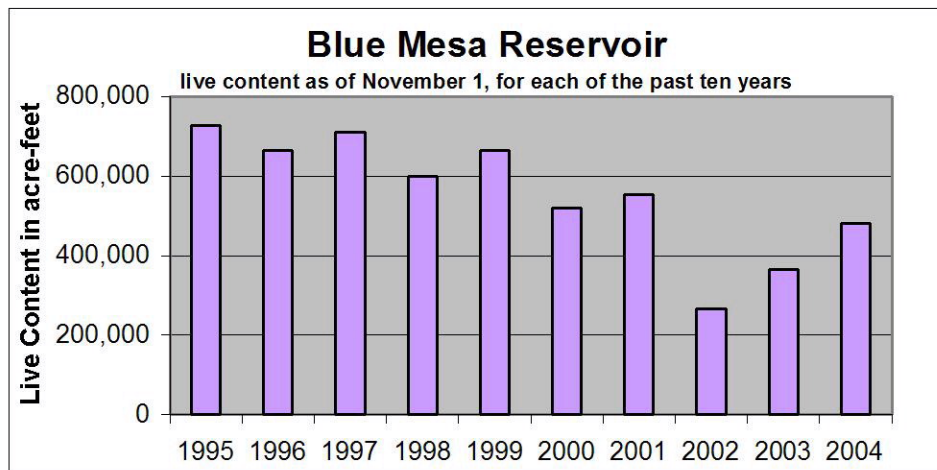
WATER ADMINISTRATION

The 2004 Water Year continued the dry trend of the previous six years in Water Division 4. Water supply conditions were somewhat worse than those of the previous year, and we again experienced numerous water shortages across the Gunnison and San Miguel Basins. One key indicator of the diminished water supply is the amount of snowpack as of April 1st for each of the past six years, as shown below.



The April 1, 2004 snowpack was 74 percent of normal, which was less than the 78 percent of normal averaged over the previous five years. This prolonged dry trend has had an adverse impact on the aquifers and reservoirs of our basin. We continued to receive numerous reports of wells and springs going dry.

Fortunately, late-summer rains during each of the last two years have bolstered the content of area reservoirs such as Blue Mesa, helping to offset the impact of back-to-back dry years. The state's largest reservoir had only 267,000 acre-feet in live storage to begin the 2003 irrigation year (November 1, 2002), which was the lowest amount since 1977 and was only 44 percent of the long-term average for this date. Despite continued below-



normal snowpack in the Gunnison basin, abundant late-summer rainfall in 2003 and 2004 caused Blue Mesa Reservoir to end the 2004 Water Year with 480,000 acre-feet in live storage.

Precipitation totals for the 2004 irrigation year at in Division 4 ranged from 113 percent of normal at Cedaredge and Montrose, to 109 percent at Gunnison and 95 percent at Norwood. The growing conditions were somewhat worse than these numbers reflect since a significant portion of the annual precipitation occurred in September and October, which is after many of the area crops were harvested.

Division 4 generally experienced below-normal to normal peak flows during the spring runoff in 2004. The Gunnison River at Gunnison experienced a daily peak flow of 1700 cfs on June 7, which compares to a normal spring peak of around 2600 cfs. Surface Creek at Cedaredge recorded a 94 cfs daily peak on May 5, compared to an average of 90 cfs. In the case of Surface Creek, the peak flows were important in that they reflected the timing of the spring runoff. The near-normal peak flows during an otherwise dry year resulted in significant additional storage because it allowed a number of junior reservoirs to be in priority and capture some of the limited volume of runoff.



Gunnison Tunnel Diversion in Black Canyon

The below-average water supply resulted in a number of shortages across the Gunnison and San Miguel basins. The Redlands Power Canal near Grand Junction did not have its decreed amount of 750 cfs available for most of the period from mid-December through mid-March. This is noteworthy in that Redlands is near the downstream end of the Gunnison Basin and could potentially call out nearly all upstream winter storage. Fortunately, the Redlands Power Canal signed a contract with the Colorado River Water Conservation District stating that Redlands would not place a call in exchange for a monetary payment.

The Gunnison Tunnel began experiencing shortages in their supplies of natural flow on July 8th. These shortages continued throughout August and most of September. Fortunately, the first- and second-fill storage accounts in Taylor Park Reservoir were of sufficient quantity to meet Tunnel demands. This was the first year since 2001 that the Upper Gunnison Basin was not called out due to shortages at the Gunnison Tunnel.

The first-fill account in Taylor Park Reservoir belongs to the Uncompahgre Valley Water Users Association. Their storage account reached its capacity of 106,230 acre-feet on March 23, at which point the second fill account began accumulating storage. The Upper Gunnison River Water Conservancy District, owners of the second fill account, was ultimately able to claim 65,226 acre-feet in their storage account as of October 31.

Calls in the Uncompahgre River Basin were limited to side tributaries draining the Uncompahgre Plateau. Ridgway Reservoir began the water year with 68,196 acre-feet in storage and reached their yearly peak of 82,802 acre-feet, or 98 percent of capacity, on July 3.

The San Miguel River mainstem also experienced a somewhat better irrigation season, with the call being delayed until August 11. This compares with a mid-July call in 2003 and a late-June call in 2002. The most significant administrative issue in Water District 60 in 2004 was the administration of the Maverick Draw Ditch call on Naturita Creek. A concerted effort was made to address all junior rights upstream of the calling structure. This included a few ditches that had not previously been curtailed and had no means to bypass stream flows. Aaron Todd, our water commissioner on the San Miguel, worked countless extra hours in an effort to bring these ditches into compliance in order to deliver the water to the calling right.

In the Cedaredge area of the North Fork of the Gunnison River drainage, water supply conditions improved markedly from those of the previous year. Despite having only 15 percent of capacity in carry-over storage (normal is 27%), we reached a peak storage of three-quarters of capacity in reservoirs on the Grand Mesa during the runoff season, and finished the year at 31 percent of capacity. The May-through-August flows in Surface Creek remained



Lone Pine Headgate

below normal, preventing many junior direct-flow rights from coming into priority. Heavy September and October rainfall helped bring both the total annual flow volume and reservoir storage levels back up to normal.

We improved our accounting techniques for Paonia Reservoir, thanks to a spreadsheet developed by Steve Tuck, our water commissioner on the North Fork. With this information, we were able to keep better track of the Ragged Mountain exchange, in which 2000 acre-feet of storage is exchanged to upstream diverters. This exchange began on July 6 when the Paonia Ditch called out the North Fork. The Ragged Mountain ditches used the last of their storage account on August 17.

PERSONNEL

The 2004 water year saw several personnel changes in Water District 40. Bob Starr officially retired as the lead water commissioner of the North Fork Valley in December 2003, after 26 years of dedicated service. Bob returned in April as a five-month employee and took over the position of Cliff Davis, who retired in November 2003. Bob resumed his former water administration duties on Leroux Creek in a part-time capacity.

Steve Tuck was appointed as Bob's successor in March 2004 and had his workload moved from the Cedaredge area to the North Fork, where Steve assumed Cliff's former administrative duties on Muddy and Anthracite Creeks. Doug Wist was then promoted into Steve's old Tech 1 position, but maintained his existing administration duties in the Surface Creek drainage while adding hydrographic and tabulation responsibilities. Dale Parker moved into Doug's old position in March while assuming Steve Tuck's water administration duties in the Ward Creek drainage. Gregg Scott moved from the Granby Cabin to the Alexander Cabin to take over Dale's former job duties.

The Granby Cabin position is scheduled to be transferred to the San Miguel, where it will be used to perform Cary Denison's old duties as the District 60 deputy water commissioner under Aaron Todd. Mark Ragsdale was hired in August to perform these duties on a temporary basis.



The Water Commissioner of the Year award in Division 4 for 2004 was given to two employees, Gregg Scott and Kenny Mahannah. Gregg and Kenny are our Water Commissioners on the Grand Mesa in Water District 40 and are stationed out of the Alexander and Park cabins, respectively. These two gentlemen work as a team in administering

the 100 or so reservoirs on top of Grand Mesa. They are responsible for turning reservoir water in the appropriate timing and amount to water commissioners in the Cedaredge area. This often involves making reservoir turns at midnight so water deliveries will arrive at lower elevation headgates at daybreak.

Gregg and Kenny have had their duties expanded substantially over the past five years, over which time our number of employees on the Mesa has been reduced from four to two. The latest reduction in staffing took place this past year, when the Granby Cabin position was transferred to the San Miguel. Gregg was asked to move to the Alexander Cabin position while still assuming some of the responsibilities of his former job. Kenny was asked to take over the Youngs Creek portion of the Alexander duties in addition to his Park Cabin workload. Both men stepped up to the task and performed their new

expanded duties with great dedication. Gregg Scott and Kenny Mahannah were both very deserving of the award of Division 4 Water Commissioner of the Year.

The Dam Safety Engineer, Jim Norfleet, retired after 23 years of service for DWR. Jim came to our agency from the U.S. Bureau of Reclamation and brought with him extensive technical skills acquired through their comprehensive dam safety program. Jim was initially stationed out of our Denver office and moved his operations to Montrose in 1987. His technical expertise, knowledge of local dams and his attention to detail will be sorely missed by this office.

BUDGET

The continued dry conditions required more intensive water administration and resulted in the need for more field visits. Our increased scrutiny of augmentation plans and wells also necessitated more miles to be driven to do the job. Unfortunately, budget constraints meant that we were unable to meet the field demands of our water users. We continued to cut back on mileage in order to remain within budget. DWR was fortunate to receive a budget supplement to offset increased mileage costs for our fleet vehicles, but the personal vehicle reimbursement rate failed to keep up with soaring gasoline prices.

Given these mileage constraints, our staff did an excellent job of maintaining the best level of service possible. In fulfilling our water administration responsibilities, we communicated with our water users via telephone and email as much as possible to minimize mileage costs. We also relied more heavily on user-supplied data for our diversion records and eliminated some non-essential field inspections for water court diligence filings.

HYDROGRAPHY

The 2004 Water Year was another busy one for construction in Division 4, with the installation of concrete ramp flumes, additional gaging stations and satellite monitoring equipment for administrative purposes.

As part of an effort to better monitor the return flows from the Uncompahgre Project, we completed the refurbishment of an old USGS gage on Roubideau Creek near Delta, including the construction of a



Ramp flume on Muddy Creek below Paonia Dam

concrete ramp flume. A new gage at Cummings Gulch near Delta was upgraded to satellite monitoring capability and is awaiting construction of a ramp flume.

Other gage construction took place at the Highline Canal near Nucla and on the Juniata Enlarged Ditch near Whitewater, where existing flumes were upgraded with satellite monitoring equipment. The Highline gage was very important in the administration of the San Miguel River since it involved a large diversion in a remote location, saving water commissioner Aaron Todd significant time and mileage. The Juniata Enlarged gage was equally beneficial to Scott King, water commissioner on Kannah Creek. Scott was able to obtain real-time access to diversion data for the City of Grand Junction's municipal water supply.

Division 4 now has 21 satellite gages operated with DWR equipment and is a cooperator with the USGS at four additional gages. As new Sutron DCP 8210's and 8220's become available, they have replaced the older units. The 8220's are set up for high data rate, providing better real-time data by transmitting every one hour instead of every four. This gives our Water Commissioners more up-to-date information in their daily administration.

The Division 4 Hydrographer, Jerry Thrush, continues to process and publish information for six stations, three of which are used for diversion records. He also provides administrative measurements for Water Commissioners, ensuring that flumes are accurate and the proper shift is applied. Jerry worked closely with the U.S. Bureau of Reclamation, U.S. Fish and Wildlife Service and U.S. Geological Survey in designing a relocated gage on the Redlands Power Canal. This work was necessitated by the reconfiguration of the canal inlet and installation of a fish screen and bypass structure for endangered fish protection.

A number of water commissioners have been trained to assist Jerry in stream measurements. Steve Tuck, Doug Wist, Bonnie Irby and Cary Denison have all been assigned a set of stream measuring equipment. Steve and Doug, both water commissioners in Water District 40, have been assigned routine measurements at stream gaging stations. Doug has been making measurements at two gages and Steve Tuck has been making measurements at four gages. Doug is receiving ongoing training in record checking and attended the hydrography training meeting in November.

DAM SAFETY

The Dam Safety Engineer, Jim Norfleet, completed his last inspection season in 2004. Garrett Jackson, the Dam Safety Engineer stationed in the Grand Junction office, assumed some of the dam inspection duties for Division 4 and Division 5. Garrett is assigned dams in water districts 42, 63 and 73, plus does design review and construction inspection for much of Division 4.



Lone Cabin Reservoir

Water commissioners continue to play a key role in our dam safety program. They are asked to accompany the dam safety engineers on their scheduled inspections. Water commissioners also perform safety observations on dams in years where an engineering inspection is not scheduled.

GROUNDWATER

The Well Permitting Program in Division 4 continues to provide timely issuance of exempt well permits. There were 530 well permits issued for Division 4 in 2004. This compares with 660 permits issued in 2003 and 693 in 2002.

A recent issue that has arisen is the issuance of geothermal well permits in conjunction with vertical ground closed loop systems. These systems have been promoted by the Delta-Montrose Electric Association as an efficient, cost-effective and ecologically friendly means for heating and cooling buildings. A key component in many systems is a series of shallow wells, each containing a single loop of pipe with a U-bend at the bottom. After the pipe is inserted, the hole is backfilled or grouted. Each vertical pipe is then connected to a horizontal pipe, which carries fluid in a closed system to and from the georexchange system.

The popularity of geothermal systems in Division 4 pointed out the need to address these types of wells differently than standard water wells since they do not appropriate subsurface liquids. Pursuant to this need, rules and regulations for geothermal wells were adopted on September 30, 2004. With these geothermal rules, we were able to streamline the permit process while addressing the specific concerns involving georexchange systems.

RECORDS AND INFORMATION

Annual diversion records and reservoir reports for Water Year 2004 were completed on schedule. Our water commissioners put a great deal of emphasis on these records, knowing the value they provide to our water users and the public. Lynne Bixler coordinated the data entry and generated the diversion records. Frank Kugel reviewed the diversion records for accuracy and completeness.

The personnel in Division 4 continually strive to produce the most thorough set of diversion records possible with our limited resources. This task has been made easier through the continued efforts of Doug Stenzel of our Denver IT staff. Doug has worked countless hours to develop and improve the Hydrobase data entry program. Division 4 staff have found the features of Hydrobase to be very helpful, particularly when tabulating new water rights or researching historic diversion data.

SPECIAL PROJECTS

We spent a great deal of effort researching ownership of water rights in conjunction with Senate Bill 278, which established the Water Administration Fee Program. SB-278 was passed in an attempt to maintain current DWR staffing levels while facing severe budget cuts. This legislation required water users to pay a fee for the administration of their water rights. Frank Kugel made public presentations, including ones for the annual meetings of both the Delta and Gunnison County Stockgrowers Associations, in an effort to educate the public on the provisions of the bill and the need for such a program.

The implementation of Senate Bill 278 turned out to be problematic for a number of reasons. Other means were sought to address DWR's budgetary concerns and ultimately House Bill 1402 was enacted to repeal the Water Administration Fee Program.

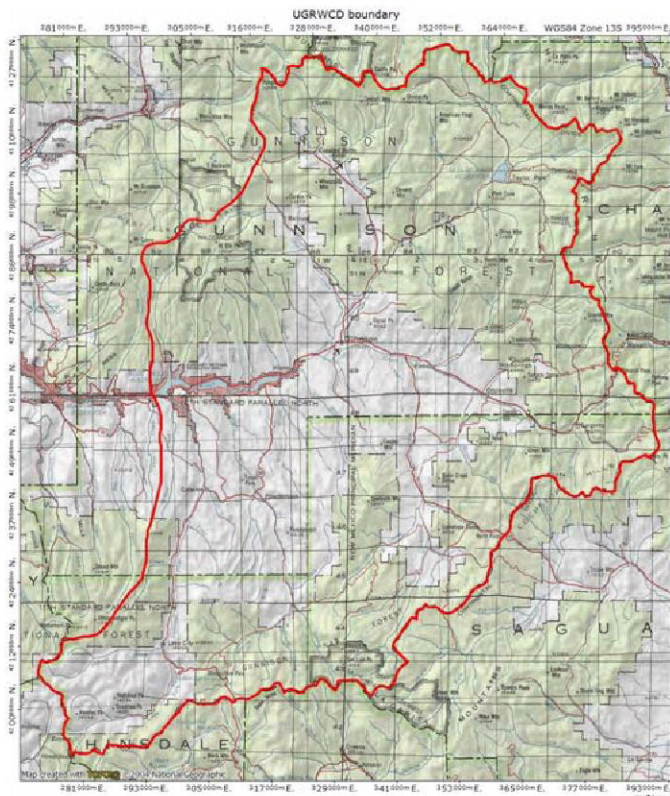
COURT HEARINGS AND CONSULTATIONS

There were 209 Water Right Applications filed in Division 4 this year. This was a decrease from 2003, where 288 cases were filed. There seemed to be quite a reaction to the drought of 2002, resulting in more cases in 2003. Much of the time spent in 2004 was working on the 2003 cases. Wayne Schieldt, the Assistant Division Engineer, prepares the Consultations for Water Court. This process involves tracking and reviewing water commissioner field inspections, reviewing Proposed Rulings, analyzing engineering calculations and answering questions from applicants or their attorneys. There were no Statements of Opposition filed in 2004. This office works in cooperation with Water Referee Aaron Clay in making sure decrees are clear, concise, and easily administered. The Consultations to the Court are key in that effort. Water Commissioner Eric Weig again aided the Assistant Division Engineer in preparing draft consultations, his help being much appreciated.

This year the Assistant Division Engineer physically attended 43 status conferences, eight on-site hearings with the Referee, and 17 hearings with the Judge. This effort is important in maintaining a good working relationship with the Referee Aaron Clay and Water Judge Steven J. Patrick.

SIGNIFICANT WATER ISSUES

GUNNISON BASIN-WIDE AUGMENTATION PLAN



The Upper Gunnison River Water Conservancy District is pursuing a basin-wide plan of augmentation for the area upstream of Blue Mesa Dam. The need for such a plan became evident after the Gunnison Tunnel call in 2002 and the “virtual call” by the Redlands Power Canal in 2003. The Redlands call was particularly critical in that it could command the entire Gunnison basin at any time of the year. As a result, augmentation plans using irrigation ditches for sources of replacement water were rendered inadequate. These calls meant that any new development had to address the downstream senior rights and it forced many owners of existing augmentation plans had to seek new sources of replacement water.

For years it has been the desire of the UGRWCD and this office to have a basin-wide augmentation plan in the upper Gunnison Basin. The major benefit of the plan would be to provide a readily available source for replacement water so that each user would not need to obtain a court decree and augmentation plan. It could serve the constituents of the basin and reduce the number of water court filings.

Historically, any augmentation needs in the upper Gunnison basin were met by plans and contracts with water from Blue Mesa Reservoir. Applicants on the Gunnison, Lake Fork of the Gunnison, East, lower Taylor, and Slate Rivers could buy water from Blue Mesa Reservoir and exchange it to their point of use. When the Gunnison River RICD was adjudicated, it took away the ability to run exchanges through that reach in May through September. A local call on the Slate River from CWCB also affected the call situation.

Water users found themselves looking for local sources above the RICD. The UGRWCD responded to this need by contracting to buy Meridian Lake, a reservoir located above Crested Butte. They then filed case 03CW107 and a Substitute Water Supply Plan to cover the many wells near Crested Butte that were out of compliance. The water was sold for a one-time purchase price of \$2500 for 0.05 acre-foot for existing uses and \$4000 for future uses. A CWCB call in 2004 brought the situation to a head for many well owners, and by the end of the 2004 irrigation season, most all well owners were signed up for the plan. This case is proceeding forward and should be finished by July of 2005.

The UGRWCD also filed case 03CW049 as a basin-wide augmentation plan to cover depletions using Blue Mesa Reservoir. The District contracted for 500 acre-feet of Blue Mesa Reservoir water from the USBR. There were many engineering issues to be worked out since the basin was so widespread and the elevations for the points of use varied from 6500 to over 9000 feet. For the SWSP process, the consultant for UGRWCD, Jim Slattery, worked out tables of consumptive use and evaporation for various elevations and incorporated delayed effects for different distances from the stream. The goal in using the charts and tables was to provide a relatively easy and structured system for employees of the UGRWCD to calculate and assign replacement amounts to each contract. The UGRWCD also worked to provide satisfactory contract language for the USBR and this office. This case drew several Statements of Opposition, but it does not seem like the issues are insurmountable. The UGRWCD has already received dozens of applications for this water from people on the Gunnison River below the RICD and up the Lake Fork of the Gunnison River.

INVOLVEMENT WITH THE COMMUNITY

The Division 4 staff made an extra effort in 2004 to be involved with the public. The ongoing drought conditions, along with budget constraints and SB-278, made it extremely important to keep our community informed of both the hydrologic and budgetary shortages we faced. To this end, we frequently attended meetings of the UGRWCD, Tri-County, UVWUA, Farmers Water Development, Colorado Cooperative, SWAT4 and other water interest groups.

Division 4 continued its participation in education at the local schools. Jerry Thrush, our hydrographer, demonstrated stream-measuring techniques to some 500 students of District RE-1J at the Water Workshop in Montrose.

Our public involvement included participation on the Gunnison Basin Roundtable for the Statewide Water Supply initiative, or SWSI. The Colorado Water Conservation Board spearheaded this effort to maintain an adequate water supply. We helped identify existing water supplies and pointed out areas where future growth might be faced with water shortages.

We provided continuing education training to the Delta County Board of Realtors in Hotchkiss, Montrose County Board of Realtors in Montrose and Ouray County Board of Realtors in Ridgway. In these sessions we described our roles and responsibilities in water matters and summarized the history of water administration in Colorado.

INFLUENTIAL CASE LAW, STATUTES, AND PROJECTS

On January 18, 2001, the Department of Justice (DOJ) representing the National Park Service filed Case 01CW05. This case sought to quantify the water right that was confirmed in US vs. Denver in 1982. This Federal Reserved water right was dated back to March 2, 1933, the date of creation of the Black Canyon National Monument. The case drew an impressive 383 Statements of Opposition, setting a record for the most SOP's ever filed in any Water Court.

In response to the Governor's Office, the Executive Director for the Department of Natural Resources, Greg Walcher, was sent to Washington DC to broker an agreement to settle this case and save taxpayers millions of dollars in litigation costs. On April 2, 2003, an historic agreement was signed with the US Department of Interior to settle the most controversial Water Court application in Division 4 history. The agreement secured a federal reserved water right for the Gunnison River of 300 cfs in Black Canyon National Park. Those signing the agreement were Commissioner John Keyes of the Bureau of Reclamation, Randy Jones of the National Park Service, Steve Williams, director of the US Fish and Wildlife Service, past Colorado Attorney General Ken Salazar, and Greg Walcher, past Executive Director of the Colorado Department of Natural Resources.

The agreement stated that the Colorado Water Conservation Board (CWCB) would file for an instream flow water right under Colorado law for "water beyond that which satisfies present and future obligations of the authorized purposes of the Aspinall Unit". This filing is unique, since the CWCB usually files for water rights for "minimum stream flows...to preserve the natural environment to a reasonable degree".

Environmental organizations took exception to the settlement, and filed a complaint in federal court, alleging the Federal Government failed to protect the natural resources of the Black Canyon in the April 2 agreement. A motion for Stay of Proceedings was filed in the Division 4 Water Court until issues in the federal complaint could be resolved. The Attorney Generals Office objected, as did most other objectors in the case, but on October 7, 2002, Judge Steven Patrick granted the motion.

On November 3, 2003, First Assistant Attorney General Carol Angel filed a Motion to Show Cause to the Colorado Supreme Court on behalf of various Colorado State Agencies asking them to overturn Judge Patrick motions to stay the proceedings. The motion stated that the Division 4 Water Court "*unjustifiably delayed the final resolution of the federal reserved water right for the Black Canyon of the Gunnison National Monument and effectively abdicated its jurisdiction and responsibility to determine issues regarding the quantity of water for that water right to the federal district court. The water court's abuse of discretion has seriously prejudiced the interest of the Petitioners, hundreds of other opposers in the Black Canyon case, and the public at large by placing these long-standing water court proceedings on indefinite hold, while the federal court litigation proceeds to decide federal reserved right issues that should be before the water*

court.” The obvious purpose of the motion was to get the case back into the Division 4 Water Court where many state interests feel it properly belongs.

The Colorado Supreme Court accepted the Motion and agreed to accept briefs and rule on this matter. The case was argued before the Court in May of 2004. On November 8, 2004 the Court ruled to uphold the State Water Courts stay of proceeding. Referencing the McCarran Amendment, the Court stated “the scope of the waiver of sovereign immunity under the McCarran Amendment is not so broad that it allows state courts to evaluate or adjudicate the federal agency decision making processes leading the United States to make a particular water application in a given case.” The Supreme Court also found the Water Court did not abuse its discretion in granting the stay

The parties must now proceed with the case in Federal Court to settle the environmental parties’ challenge that the United States violated the Administrative Procedure Act.

RICD FILING BY UGRWCD

On March 29, 2003, the Upper Gunnison River Water Conservancy District (UGRWCD) filed for a water right in Case 02CW038 for a Recreational In-Channel Diversion (RICD). This was the first RICD filing in Division 4, and our office filed a Statement of Opposition.



The application identified a series of in-channel structures on the Gunnison River, located just below Highway 50 west of Gunnison. Unlike some other applications that have claimed the highest flows for the entire year, the application suggested a varying schedule from 250 cfs to 1500 cfs for the period from May 1 to September 30.

In September of 2002, the CWCB board held the required hearing, and after considerable deliberation, recommended the flow rights should be decreed for only 250 cfs. The UGRWCD objected to the recommendation for reduced flows. This case went to trial on September 15-17, 2003. On December 26, 2003, Judge Patrick ruled in favor of the UGRWCD, granting the flow amounts as listed in the application.

The CWCB filed an appeal to the Colorado Supreme Court, and on December 6, 2004 the Court entertained oral arguments for the case. The decision is expected in the spring of 2005.

ADJUDICATING THE SUBORDINATION CONTRACT

On December 2003, the UGRWCD filed case 03CW263 to finally adjudicate the Subordination Contract. The formal signing of the Contract was held on June 1, 2000. The Contract contained a provision and a commitment that the contract would be adjudicated at some point in the future. The Contract allowed for 60,000 acre-feet of future in-basin depletions against the priorities of the Aspinall Unit.

The attorney for the UGRWCD, John McClow, labored over the appropriate format to present the court, finally deciding that it would be best submitted as an augmentation plan since that is essentially how the Contract functioned. The Contract stipulated that the UGRWCD would present an annual report to the USBR showing the recipients of the subordination benefit and the total amount they consume each year. This simplified the accounting and reporting process for the eventual court decree.

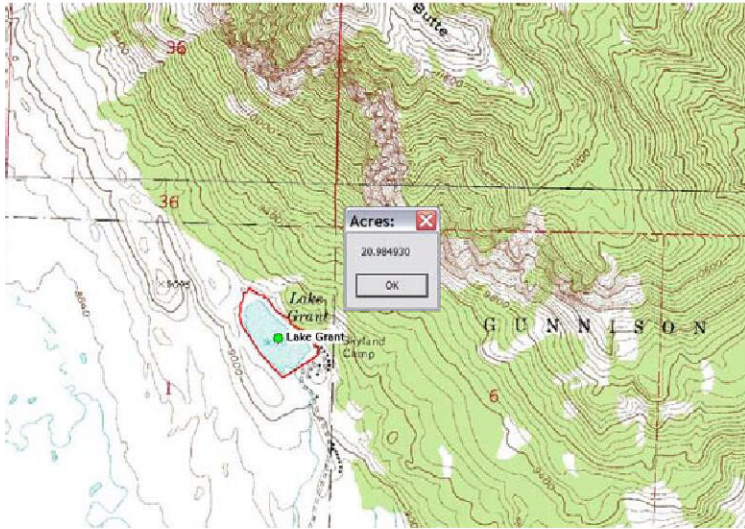
The case drew only two Statements of Opposition, one from CWCB. This office issued a favorable Summary of Consultation, stating “With the accounting procedure as established in the annual accounting reports, this augmentation plan can be administered without injury to other vested water rights. Therefore, recommend approval of this application as submitted.” It is hoped that this case can be settled in 2005.

GREATER EFFICIENCY IN DIVISION 4

The use of cellular phones has provided a huge time and mileage savings for Division 4 operations. Water District 40 in particular has used them extensively in administering and delivering water in the most efficient means possible. Our seven water commissioners in the Cedaredge area run a complicated system of reservoir exchanges in which water is released from the one hundred or so reservoirs on Grand Mesa and distributed to dozens of ditches. This requires close coordination amongst our field staff and cellular phones allows this to happen. We found a provider in the area that does not charge for customer-to-customer calls, which has reduced our costs significantly.

We continue to use mapping software and GPS technology in our field investigations. Software products such as National Geographic TOPO!, ArcView GIS, IDS PLSS Locator and USAPhotoMaps have helped immensely in accurately locating structures for field inspection of new water court applications.

The following is an example of the usefulness of mapping software. The topographic map showing Lake Grant is from a 1961 survey and is the most current USGS quad map available.



In order to verify the current surface area of Lake Grant, we used USAPhotoMaps to show the original topo map as well as the most current aerial photography, circa 2001. Given that the dam was enlarged during that 40-year period, the aerial photo provides a more accurate depiction of current conditions.

The software then provides a means for measuring the enlarged surface area, all without having to set foot at the site. Such technology has also proven useful in similar situations involving the determination of irrigated acreage.



A. TRANSMOUNTAIN DIVERSION SUMMARY--INFLOWS

RECIPIENT		10-YR AVERAGE					CURRENT YR					SOURCE	
WD	ID	NAME	STREAM	AF	DAYS	AF	DAYS	WD	DAYS	AF	WD	ID	STREAM
40	4520	Leon Lake Tunnel	Surface Cr	1,364	68	941	57	72	57	941	72	4520	Leon Cr
68	4659	Mineral Pt D	Uncompahgre	138	37	**0	0	30	0	**0	30	4661	Animas R
68	4660	Red Mountain	Uncompahgre	99	47	426	85	30	85	426	30	4662	Animas R

B. TRANSMOUNTAIN DIVERSION SUMMARY--OUTFLOWS

11	4618	Larkspur D	Arkansas R	73	53	76	54	28	54	76	28	4655	Tomichi Cr
26	702	Tarbell D	643	643	77	693	85	28	85	693	28	4656	Cochetopa Cr
20	920	Tabor D	Clear Cr	741	135	656	155	62	155	656	62	4600	Cebolla Cr
45	577	Divide C Highline	Divide Cr	1,011	44	1,141	46	40	46	1,141	40	4657	Cl Fk Muddy Cr
72	N/A	Grand Jct FL & WW	Colorado R	2,484	350	1,474	360	42	360	1,474	42	513	Kannah Cr
72	N/A	Hallenbeck R #1	Colorado R	4,324	319	4,550	361	42	361	4,550	42	3618	Kannah Cr
72	4713	Redlands Can	Colorado R	510,930	332	451,542	306	42	306	451,542	42	541	Gunnison
72	4712	Fruita Pl	Colorado R	****	****	****	****	73	****	****	73	507	East Cr

*No water available, ** Water available, none taken ****Water taken, no data available

RESERVOIR STORAGE SUMMARY
IRRIGATION YEAR – 2004
AMOUNT OF STORAGE

WD	ID	RESERVOIR NAME	SOURCE STREAM	MINIMUM		MAXIMUM		DATE	DATE	END YR
				AF	DATE	AF	DATE			
28	3590	Hot Springs R	Hot Springs Cr	119.80	8/1/04	603.00	5/1/04	5/1/04	144.50	
28	3591	McDonough #1	Los Pinos Cr	65.10	10/31/04	805.20	5/1/04	5/1/04	65.10	
28	3592	McDonough #2	Los Pinos Cr	20.00	8/1/04	430.10	6/1/04	6/1/04	41.30	
28	3593	Needle Creek	Needle Cr	363.40	4/1/04	776.10	6/1/04	6/1/04	438.80	
28	3594	Upper Dome R	Cochetopa Cr	395.20	10/1/04	492.32	5/1/04	5/1/04	441.68	
28	3595	Vouga Res	Razor Cr	605.00	10/1/04	910.00	5/1/04	5/1/04	605.00	
40	3412	Ault Res	Muddy Cr	0.00	8/20/2004	116.00	5/30/2004	5/30/2004	5.00	
40	3414	East Beckwith	Anthracite	0.00	7/23/2004	383.00	7/9/2004	7/9/2004	50.00	
40	3413	Bruce Park Res	Hubbard Cr	0.00	9/13/2004	556.00	7/1/2004	7/1/2004	0.00	
40	3399	Overland Res 1	Muddy Cr	0.00	9/13/2004	6710.00	6/4/2004	6/4/2004	80.00	
40	3416	Paonia Res	Muddy Cr	396.00	9/1/2004	15,778.50	7/5/2004	7/5/2004	2,550.00	
40	3417	Spatafora Res	Muddy Cr	0.00	11/1/2003	2.00	10/2/2004	10/2/2004	2.00	
40	3418	Tomahawk Res	Muddy Cr	0.00	11/1/2003	87.30	7/1/2004	7/1/2004	36.00	
40	3419	Williams Cr R	Muddy Cr	69.00	9/9/2004	100.00	6/10/2004	6/10/2004	69.00	
40	3391	Bald Mt Res	Crystal Cr	0	8/31/2004	88.80	7/6/2004	7/6/2004	0.00	

RESERVOIR STORAGE SUMMARY
IRRIGATION YEAR – 2004
AMOUNT OF STORAGE

WD	ID	RESERVOIR NAME	SOURCE STREAM	MINIMUM		MAXIMUM		END YR
				AF	DATE	AF	DATE	
40	3394	Don Meek 1	Crystal Cr	0.00	11/1/2003	20.00	5/21/2004	18.00
40	3395	Fruitland Res	Crystal Cr	0.00	7/13/2004	7145.00	5/6/2004	0.00
40	3392	Bottle Stomp R	Iron Cr	0.00	9/22/2004	17.00	7/7/2004	0.00
40	3553	Crawford Res	Iron Cr	1314.00	10/29/2004	11673.00	5/14/2004	6498.00
40	3397	Meek Res	Iron Cr	0.00	11/1/2003	29.13	5/21/2004	9.00
40	3401	Rockwell 1 R	Iron Cr	64.00	11/1/2003	118.50	5/21/2004	70.00
40	3403	Tyler Res	Iron Cr	80.00	10/22/2004	169.30	5/26/2004	80.00
40	3400	Poison Spr Res	Gunnison R	35.00	11/1/2003	85.00	5/28/2004	40.00
40	3402	Todd Res	McDonald Cr	0.00	11/1/2003	0.00	11/1/2003	0.00
40	3420	Bailey Res	Leroux Cr	67.0	8/31/2004	423.00	5/10/2004	178.00
40	3421	Brockman 1 R	Leroux Cr	0.00	11/1/2003	16.00	4/16/2004	0.00
40	3422	Brockman 2 R	Leroux Cr	0.00	11/1/2003	41.00	4/30/2004	0.00
40	3423	Carl Smith R	Leroux Cr	442.19	7/31/2004	938.00	4/22/2004	877.05
40	3424	Dog Fish Res	Leroux Cr	0.00	11/1/2003	243.00	5/10/2004	0.00
40	3425	Dowdy Res	Leroux Cr	49.00	9/15/2004	264.00	4/16/2004	140.00
40	3426	Ella Res	Leroux Cr	0.00	11/1/2003	98.00	4/30/2004	0.00

RESERVOIR STORAGE SUMMARY
IRRIGATION YEAR – 2004
AMOUNT OF STORAGE

WD	ID	RESERVOIR NAME	SOURCE STREAM	MINIMUM		MAXIMUM		DATE	DATE	END YR
				AF	DATE	AF	DATE			
40	3427	Elk Wallows R	Leroux Cr	0.00	11/1/2003	218.00	5/10/2004	5/10/2004	0.00	0.00
40	3428	Ellington Cook	Leroux Cr	0.00	11/1/2003	24.50	4/30/2004	4/30/2004	0.00	0.00
40	3429	Fairmont Park	Leroux Cr	0.00	11/1/2003	78.00	4/30/2004	4/30/2004	0.00	0.00
40	3430	Fairmont Res	Leroux Cr	20.00	11/1/2003	30.00	5/10/2004	5/10/2004	30.00	30.00
40	3431	Fisher Res	Leroux Cr	0.00	11/1/2003	10.00	4/30/2004	4/30/2004	0.00	0.00
40	3432	Goodenough Res	Leroux Cr	53.00	11/1/2003	491.00	5/10/2004	5/10/2004	255.00	255.00
40	3433	Gray Res	Leroux Cr	56.00	11/1/2003	424.00	4/16/2004	4/16/2004	125.00	125.00
40	3435	Hanson 2 Res	Leroux Cr	0.00	11/1/2003	225.00	4/30/2004	4/30/2004	0.00	0.00
40	3437	Hunt Res	Leroux Cr	10.00	11/1/2003	100.00	5/19/2004	5/19/2004	10.00	10.00
40	3438	Lucky Find Res	Leroux Cr	0.00	11/1/2003	66.00	4/20/2004	4/20/2004	0.00	0.00
40	3439	Miller Res	Leroux Cr	0.00	11/1/2003	20.40	4/30/2004	4/30/2004	0.00	0.00
40	3440	Owens Res	Leroux Cr	0.00	11/1/2003	92.00	4/16/2004	4/16/2004	0.00	0.00
40	3441	Patterson Res	Leroux Cr	0.00	11/1/2003	78.00	4/16/2004	4/16/2004	0.00	0.00
40	3442	Patterson 2 R	Leroux Cr	151.00	11/1/2003	151.00	4/16/2004	4/16/2004	151.00	151.00
40	3443	Pine Cone Res	Leroux Cr	0.00	11/1/2003	37.00	5/10/2004	5/10/2004	0.00	0.00
40	3444	Reynolds Res	Leroux Cr	0.00	11/1/2003	176.00	4/30/2004	4/30/2004	0.00	0.00

RESERVOIR STORAGE SUMMARY
IRRIGATION YEAR – 2004
AMOUNT OF STORAGE

WD	ID	RESERVOIR NAME	SOURCE STREAM	MINIMUM		MAXIMUM		DATE	END YR
				AF	DATE	AF	DATE		
40	3446	Skim Milk	Leroux Cr	0.00	11/1/2003	90.00	4/30/2004	0.00	0.00
40	3447	Wash Tub Res	Leroux Cr	0.00	11/1/2003	33.00	4/20/2004	0.00	0.00
40	3448	Water Bug R	Leroux Cr	0.00	11/1/2003	40.00	5/10/2004	0.00	0.00
40	3449	Willow Res	Leroux Cr	0.00	11/1/2003	128.00	4/30/2004	0.00	0.00
40	3406	Beaver Res	Minnesota Cr	0.00	11/1/2003	1394.00	6/19/2004	0.00	0.00
40	3407	Lone Cabin R	Minnesota Cr	0.00	11/1/2003	126.00	6/15/2004	0.00	0.00
40	3408	Monument Res	Minnesota Cr	0.00	11/1/2003	442.00	6/14/2004	0.00	0.00
40	3410	Roeber 2 Res	Minnesota Cr	0.00	11/1/2003	44.00	5/1/2004	0.00	0.00
40	3411	West Res	Jay Cr	0.00	11/1/2003	182.00	8/4/2004	0.00	0.00
40	3714	Lucas Cline R	North Fork R	0.00	11/1/2003	9.00	6/3/2004	0.00	0.00
40	3409	Reynolds Res	Reynolds Cr	10.00	11/1/2003	100.00	6/11/2004	25.00	25.00
40	3436	Holy Terror R	Terror Cr	0.00	11/1/2003	146.00	4/30/2004	0.00	0.00
40	3445	Rex Res	Terror Cr	0.00	11/1/2003	24.00	4/30/2004	0.00	0.00
40	3300	Alexander Lake	Ward Creek	0.00	11/1/2003	157.00	5/3/2004	157.00	157.00
40	3302	Barren Lake	Kiser Cr	0.00	11/1/2003	0.00	11/1/2003	0.00	0.00
40	3450	Basin #1	Dirty George C	0.00	11/1/2003	139.71	6/1/2004	0.00	0.00

RESERVOIR STORAGE SUMMARY
IRRIGATION YEAR – 2004
AMOUNT OF STORAGE

WD	ID	RESERVOIR NAME	SOURCE STREAM	MINIMUM		MAXIMUM		DATE	DATE	END YR
				AF	DATE	AF	DATE			
40	3451	Basin #2	Dirty George C	0.00	11/1/2003	16.55	6/1/2004	6/1/2004	0.00	
40	3452	Battlement 1	Dirty George C	0.00	11/1/2003	71.90	5/3/2004	5/3/2004	0.00	
40	3453	Battlement 2	Dirty George C	8.69	11/1/2003	524.25	8/1/2004	8/1/2004	524.25	
40	3341	Bonita	Surface Cr	0.00	11/1/2003	244.66	8/1/2004	8/1/2004	103.42	
40	3304	Bull Finch 1	Kiser Cr	0.00	11/1/2003	74.80	6/8/2004	6/8/2004	0.00	
40	3305	Bull Finch 2	Kiser Cr	0.00	11/1/2003	20.13	6/8/2004	6/8/2004	0.00	
40	3303	Boulder Lake 1	Ward Cr	0.00	11/1/2003	0.00	11/1/2003	11/1/2003	0.00	
40	3342	Cabin Lake	Surface Cr	0.00	11/1/2003	27.00	5/17/2004	5/17/2004	0.00	
40	3378	Calumet	Surface Cr	0.00	11/1/2003	16.84	5/31/2004	5/31/2004	0.00	
40	3366	Carbonate Cmp 3	Surface Cr	0.00	11/1/2003	10.70	5/4/2004	5/4/2004	0.00	
40	3306	Carbonate Cmp 6	Youngs Cr	0.00	11/1/2003	129.58	7/1/2004	7/1/2004	0.00	
40	3307	Carbonate Cmp 7	Youngs Cr	0.00	11/1/2003	105.38	7/1/2004	7/1/2004	0.00	
40	3343	Cedar Mesa	Surface Cr	0.00	11/1/2003	919.00	6/8/2004	6/8/2004	232.30	
40	3379	Cole 1	Surface Cr	0.00	11/1/2003	18.71	6/8/2004	6/8/2004	0.00	
40	3380	Cole 2	Surface Cr	0.00	11/1/2003	27.00	5/31/2004	5/31/2004	0.00	
40	3381	Cole 3 (Chy Ln)	Surface Cr	0.00	11/1/2003	36.55	5/31/2004	5/31/2004	0.00	

RESERVOIR STORAGE SUMMARY
IRRIGATION YEAR – 2004
AMOUNT OF STORAGE

WD	ID	RESERVOIR NAME	SOURCE STREAM	MINIMUM		MAXIMUM		END YR
				AF	DATE	AF	DATE	
40	3344	Cole 4	Surface Cr	0.00	11/1/2003	17.00	5/14/2004	0.00
40	3345	Cole 5	Surface Cr	0.00	11/1/2003	116.23	5/14/2004	0.00
40	3308	Daniels Sl	Kiser Cr	87.89	11/1/2003	228.00	5/3/2004	89.33
40	3309	Deep Slough	Ward Cr	5.50	10/31/2004	464.52	6/1/2004	5.50
40	3310	Deep Ward	Ward Cr	127.60	10/31/2004	667.10	7/1/2004	127.60
40	3346	Deserted Park	Surface Cr	0.00	11/1/2003	32.25	6/1/2004	0.00
40	3311	Donnelly Sl	Kiser Cr	144.00	11/1/2003	276.97	5/3/2004	276.97
40	3382	Doughty 1	Surface Cr	0.00	11/1/2003	48.87	5/31/2004	0.00
40	3383	Doughty 2	Surface Cr	0.00	11/1/2003	15.90	6/8/2004	0.00
40	3347	Dreyfus	Surface Cr	0.00	11/1/2003	42.50	5/14/2004	12.92
40	3312	Eggleston Lake	Kiser Cr	0.00	11/1/2003	1633.30	6/17/2004	537.05
40	3348	Elk Park	Surface Cr	30.88	8/1/2004	96.83	11/1/2003	30.88
40	3549	Eureka 1	Youngs Cr	0.00	11/1/2003	27.10	5/13/2004	0.00
40	3349	Eureka 2	Youngs Cr	0.00	11/1/2003	53.47	6/1/2004	0.00
40	3350	Fish Lake	Surface Cr	8.21	11/1/2003	76.93	5/11/2004	21.59
40	3313	Forrest	Ward Cr	0.00	11/1/2003	45.15	6/4/2004	0.00

RESERVOIR STORAGE SUMMARY
IRRIGATION YEAR – 2004
AMOUNT OF STORAGE

WD	ID	RESERVOIR NAME	SOURCE STREAM	MINIMUM		MAXIMUM		DATE	END YR
				AF	DATE	AF	DATE		
40	3314	Goodenough	Kiser Cr	15.00	11/1/2003	152.00	6/1/2004	152.00	
40	3455	Granby 6	Dirty George C	0.00	11/1/2003	45.98	5/4/2004	0.00	
40	3456	Granby 7	Dirty George C	29.99	10/31/2004	76.08	5/4/2004	29.99	
40	3457	Granby 8	Dirty George C	0.00	11/1/2003	13.31	6/1/2004	0.00	
40	3458	Granby 9	Dirty George C	0.00	11/1/2003	45.56	6/1/2004	0.00	
40	3454	Granby 5-11	Dirty George C	0.00	11/1/2003	488.20	7/1/2004	122.60	
40	3459	Granby 12	Dirty George C	86.38	11/1/2003	354.59	7/1/2004	354.59	
40	3351	Greenwood	Surface Cr	0.00	11/1/2003	79.74	6/1/2004	0.00	
40	3384	Hale	Surface Cr	0.00	11/1/2003	0.00	11/1/2003	0.00	
40	3315	Hotel Twin L	Ward Creek	0.00	11/1/2003	352.10	9/1/2004	352.10	
40	3316	Howard	Kiser Cr	0.00	7/25/2004	37.32	6/1/2004	0.00	
40	3317	Island Lake	Ward Cr	355.00	11/1/2003	966.24	6/3/2004	593.56	
40	3352	Kehmeier	Surface Cr	0.00	9/1/2004	298.89	6/1/2004	0.00	
40	3319	Kiser Slough	Surface Cr	0.00	11/1/2003	512.00	5/8/2004	49.51	
40	3318	Kennicott SI	Kiser Cr	0.00	11/1/2003	352.10	6/1/2004	0.00	
40	3353	Knox	Surface Cr	45.16	11/1/2003	213.13	6/1/2004	61.53	

RESERVOIR STORAGE SUMMARY
IRRIGATION YEAR – 2004
AMOUNT OF STORAGE

WD	ID	RESERVOIR NAME	SOURCE STREAM	MINIMUM		MAXIMUM		END YR
				AF	DATE	AF	DATE	
40	4520	Leon Lake	Leon Cr	0.00	11/1/2003	1125.38	8/1/2004	406.68
40	3385	Leon Park	Surface Cr	0.00	11/1/2003	119.24	6/21/2004	0.00
40	3320	Lilly Pad	Youngs Cr	0.00	11/1/2003	29.93	6/1/2004	0.00
40	3386	Little Giant 1	Surface Cr	0.00	11/1/2003	45.92	5/31/2004	0.00
40	3387	Little Giant 2	Surface Cr	0.00	11/1/2003	0.00	11/1/2003	0.00
40	3322	Little Grouse	Youngs Cr	11.38	10/31/2004	52.50	5/4/2004	11.38
40	3321	Little Gem	Ward Cr	0.00	11/1/2003	169.52	6/10/2004	81.51
40	3388	Marcott	Surface Cr	0.00	11/1/2003	402.23	5/31/2004	32.01
40	3323	McKoon	Youngs Cr	0.00	11/1/2003	114.71	7/4/2004	107.93
40	3354	Military	Surface Cr	0.00	11/1/2003	236.60	6/1/2004	110.50
40	3355	Park	Surface Cr	986.02	10/31/2004	3383.40	6/1/2004	986.02
40	3324	P C & G 1	Kiser Cr	0.00	11/1/2003	25.97	6/10/2004	0.00
40	3325	Pedro	Youngs Cr	0.00	10/1/2004	150.15	7/4/2004	0.00
40	3326	Pine	Youngs Cr	0.00	11/1/2003	11.01	6/4/2004	0.00
40	3327	Prebble	Youngs Cr	127.49	10/31/2004	193.05	5/4/2004	127.49
40	3328	Rim Rock Lake	Ward Cr	0.00	11/1/2003	107.90	5/5/2004	107.90

RESERVOIR STORAGE SUMMARY
IRRIGATION YEAR – 2004
AMOUNT OF STORAGE

WD	ID	RESERVOIR NAME	SOURCE STREAM	MINIMUM		MAXIMUM		DATE	DATE	END YR
				AF	DATE	AF	DATE			
40	3329	Rockland	Ward Cr	0.00	11/1/2003	0.00	11/1/2003	0.00	11/1/2003	0.00
40	3356	Round Lake	Surface Cr	0.00	11/1/2003	12.10	6/1/2004	0.00	6/1/2004	0.00
40	3330	Ryan	Youngs Cr	0.00	11/1/2003	40.27	5/13/2004	0.00	5/13/2004	0.00
40	3357	Sackett	Surface Cr	39.50	11/1/2003	108.00	5/3/2004	108.00	5/3/2004	108.00
40	3331	Safety 1 & 2	Cottonwood Cr	0.00	11/1/2003	10.66	6/16/2004	0.00	6/16/2004	0.00
40	3332	Scotland Peak	Ward Cr	0.00	11/1/2003	50.96	6/3/2004	0.00	6/3/2004	0.00
40	3333	Sheep Lake	Ward Cr	0.00	11/1/2003	154.00	6/1/2004	0.00	6/1/2004	0.00
40	3358	Stell	Surface Cr	19.56	11/1/2003	56.24	6/8/2004	26.55	6/8/2004	26.55
40	3389	Trickle	Surface Cr	0.00	11/1/2003	37.51	5/5/2004	0.00	5/5/2004	0.00
40	3359	Trio	Surface Cr	41.30	10/1/2004	164.30	6/1/2004	41.30	6/1/2004	41.30
40	3360	Twin Lake 1	Surface Cr	0.00	11/1/2003	34.10	7/1/2004	0.00	7/1/2004	0.00
40	3361	Twin Lake 2	Surface Cr	33.24	11/1/2003	82.07	7/7/2004	71.25	7/7/2004	71.25
40	3334	Upper Hotel L	Ward Cr	47.33	11/1/2003	98.11	7/1/2004	88.71	7/1/2004	88.71
40	3362	Vela	Surface Cr	98.00	1/1/2003	436.62	5/3/2004	327.04	5/3/2004	327.04
40	3335	Ward Cr	Ward Cr	26.90	10/31/2004	282.36	5/3/2004	26.90	5/3/2004	26.90
40	3363	Weir/Johnson 2	Surface Cr	176.49	11/1/2003	449.08	7/6/2004	449.08	7/6/2004	449.08

RESERVOIR STORAGE SUMMARY
IRRIGATION YEAR – 2004
AMOUNT OF STORAGE

WD	ID	RESERVOIR NAME	SOURCE STREAM	MINIMUM		MAXIMUM		DATE	DATE	END YR
				AF	DATE	AF	DATE			
40	3364	Weir Park	Surface Cr	0.00	11/1/2003	40.73	6/1/2004	6/1/2004	0.00	0.00
40	3336	Womack 1	Ward Cr	0.00	11/1/2003	193.20	6/1/2004	6/1/2004	0.00	0.00
40	3337	Womack 2 & 3	Cottonwood Cr	0.00	7/5/2004	114.76	6/1/2004	6/1/2004	0.00	0.00
40	3340	Womack 5	Cottonwood Cr	0.00	11/1/2003	3.37	6/1/2004	6/1/2004	0.00	0.00
40	3338	Young Cr 1 & 2	Youngs Cr	0.00	10/31/2004	310.34	6/4/2004	6/4/2004	0.00	0.00
40	3339	Youngs Cr 3	Youngs Cr	6.12	11/1/2003	200.62	6/4/2004	6/4/2004	200.62	200.62
40	3390	Y & S	Surface Cr	48.87	11/1/2003	184.40	7/10/2004	7/10/2004	74.59	74.59
40	3365	Fruitgrowers	Alfalfa Run	247.00	11/1/2003	4451.00	4/9/2004	4/9/2004	1642.00	1642.00
40	3368	Beaver Dam	Escalante Cr	0.00	11/1/2003	269.00	9/16/2004	9/16/2004	5.37	5.37
40	3370	Clark Res	Oak Cr	0.00	11/1/2003	43.81	5/14/2004	5/14/2004	0.00	0.00
40	3373	Dugger Res	Oak Cr	98.65	7/29/2004	195.00	11/1/2003	11/1/2003	98.65	98.65
40	3374	Morris 2	Oak Cr	16.33	11/1/2003	16.33	11/1/2003	11/1/2003	16.33	16.33
40	3375	Pitcarin Res	Doughspoon Cr	29.00	11/1/2003	75.95	5/18/2004	5/18/2004	43.20	43.20
40	3376	Porter 1	Oak Cr	47.44	11/1/2003	201.76	5/18/2004	5/18/2004	143.10	143.10
40	3377	Porter 4	Oak Cr	38.00	11/1/2003	38.00	11/1/2003	11/1/2003	38.00	38.00
40	3301	Arch Slough	Ward Cr	0.00	11/1/2003	34.53	6/1/2004	6/1/2004	24.38	24.38

RESERVOIR STORAGE SUMMARY
IRRIGATION YEAR – 2004
AMOUNT OF STORAGE

WD	ID	RESERVOIR NAME	SOURCE STREAM	MINIMUM		MAXIMUM		END YR
				AF	DATE	AF	DATE	
40	3466	Upper Eggleston	Kiser Cr	0.00	9/8/2004	292.00	5/6/2004	102.00
40	3544	Skinned Horse	Ward Cr	13.80	8/2/2004	31.40	5/28/2004	13.80
42	3600	Anderson R 1	Kannah Cr	356.00	09/01/2004	507.00	7/01/2004	358.00
42	3601	Anderson R 2	Kannah Cr	0.00	11/01/2003	454.00	6/01/2004	44.00
42	3630	Anderson R 6	Kannah Cr	0.00	10/31/2004	83.00	6/01/2004	0.00
42	3602	Bolen AJR	Kannah Cr	0.00	10/31/2004	244.80	6/01/2004	0.00
42	3603	Bolen Res	Kannah Cr	0.00	11/01/2003	423.00	6/01/2004	323.00
42	3604	Carson Lake	Kannah Cr	653.00	11/01/2003	653.00	10/31/2004	653.00
42	3606	Deep Cr R 2	Kannah Cr	0.00	10/31/2004	364.00	6/01/2004	0.00
42	3607	Dry Cr R Sup	Kannah Cr	0.00	10/31/2004	194.00	6/01/2004	0.00
42	3608	Flowing Pk R	Kannah Cr	247.00	10/31/2004	773.00	7/01/2004	247.00
42	3609	Fruita Res 1	East Cr	9.53	11/1/2003	24.01	5/31/2004	7.57
42	3610	Fruita Res 2	East Cr	57.69	11/1/2003	154.00	5/31/2004	42.05
42	3614	Grand Mesa R 1	Kannah Cr	0.00	10/31/2004	345.00	6/01/2004	0.00

RESERVOIR STORAGE SUMMARY
IRRIGATION YEAR – 2004
AMOUNT OF STORAGE

WD	ID	RESERVOIR NAME	SOURCE STREAM	MINIMUM		MAXIMUM		DATE	DATE	END YR
				AF	DATE	AF	DATE			
42	3615	Grand Mesa R 6	Kannah Cr	0.00	11/01/2003	0.00	10/31/2004	0.00	10/31/2004	0.00
42	3616	Grand Mesa R 8	Kannah Cr	0.00	10/31/2004	379.00	7/01/2004	0.00	7/01/2004	0.00
42	3617	Grand Mesa R 9	Kannah Cr	0.00	10/31/2004	153.00	6/01/2004	0.00	6/01/2004	0.00
42	3618	Hallenbeck R 1	Kannah Cr	297.00	11/31/2004	715.00	5/31/2004	297.00	5/31/2004	297.00
42	3619	Hallenbeck R 2	Kannah Cr	0.00	10/31/2004	503.00	6/01/2004	0.00	6/01/2004	0.00
42	3620	Juniata Res	Kannah Cr	4,793.00	11/01/2004	6,860.00	5/31/2004	5,618.00	5/31/2004	5,618.00
42	3623	Scales Res 1	Kannah CR	0.00	10/31/2004	122.00	7/01/2004	0.00	7/01/2004	0.00
42	3624	Scales Res 3	Kannah Cr	0.00	10/31/2004	197.00	7/01/2004	0.00	7/01/2004	0.00
42	3625	Somerville R 1	Whitewater Cr	0.00	10/31/2004	973.00	6/01/2004	0.00	6/01/2004	0.00
59	3665	Spring Creek	Taylor River	1,180.00	9/28/2004	1,813.00	7/13/2004	1,180.00	7/13/2004	1,180.00
59	3666	Taylor Park	Taylor River	64,502.00	10/14/2004	97,641.00	6/21/2004	65,226.00	6/21/2004	65,226.00
59	3684	Lake Grant	Slate River	174.00	10/22/2004	271.00	5/10/2004	174.00	5/10/2004	174.00
59	2689	Meridian Lk Pk	Slate River	114.80	9/13/2004	123.30	4/7/2004	123.30	4/7/2004	123.30

RESERVOIR STORAGE SUMMARY
IRRIGATION YEAR – 2004
AMOUNT OF STORAGE

WD	ID	RESERVOIR NAME	SOURCE STREAM	MINIMUM		MAXIMUM		END YR
				AF	DATE	AF	DATE	
60	3507	Gurley R	Beaver Cr	2,994.00	9/20/2004	9,475.00	5/12/2004	3,365.00
60	3511	Lone Cone R	Bennett Cr	215.00	10/4/2004	1,840.00	5/4/2004	225.00
60	3510	Lilylands	Naturita Cr	47.00	10/4/2004	458.00	5/4/2004	50.00
60	3512	Miramonte	W Naturita Cr	5,423.00	1/4/2004	6,567.00	4/4/2004	5,800.00
60	3527	Trout Lake Res	Lake Fork	1,099.00	4/4/2004	3,174.00	7/4/2004	2,852.00
61	3551	Buckeye R	Buckeye Cr.	411.00	11/1/2003	2,341.00	6/18/04	661.00
62	3552	Blue Mesa	Gunnison R	364,064.00	11/1/2003	637,672.00	7/3/2004	479,893.00
62	3578	Crystal	Gunnison R	13,154.00	9/7/2004	17,526.00	10/12/2004	16,134.00
62	3545	Morrow Pt	Gunnison R	108,607.00	5/1/2004	114,296.00	7/30/2004	113,319.00
62	3548	Silverjack	Big Cimarron	3,329.00	9/17/2004	13,297.00	5/29/2004	3,856.00
63	3640	Craig Res 2	West Cr	51.21	11/1/2003	544.00	5/31/2004	63.30
63	3641	Burg Res	West Cr	0.00	11/1/2003	43.91	5/1/2004	0.00
63	3642	Casement Res	West Cr	7.80	11/1/2003	27.10	5/31/2004	8.91

RESERVOIR STORAGE SUMMARY
IRRIGATION YEAR – 2004
AMOUNT OF STORAGE

WD	ID	RESERVOIR NAME	SOURCE STREAM	MINIMUM		MAXIMUM		END YR
				AF	DATE	AF	DATE	
63	3643	Casto Res	West Cr	101.75	11/1/2003	151.97	5/1/2004	22.56
63	3644	Craig Res 1	West Cr	0.00	11/1/2003	0.00	5/31/2004	0.00
68	3675	Ridgway	Uncompahgre R	67,890.00	9/9/2004	82,802.00	7/3/2004	70,413.00
73	3612	Duval Res	Chiquito Dol.	0.00	11/1/2003	102.40	5/30/2004	0.00
73	3621	Fruita Res 3	Chiquito Dol.	12.56	11/1/2003	50.00	5/31/2004	12.20

WATER DIVERSION SUMMARIES

WD	STRUCTURES REPORTING					ALL STRUCTURES				TO IRRIGATION		
	With Record (1)	No Water Avail. (2)	No Water Taken (3)	No Info Avail. (4)	No Record (5)	Estimate # Visits Structure	Total Diversions, AF	Total Diversions to Storage, AF	Total Diversions, AF	Total Diversions, AF	Number of Acres Irrigated	Average AF Per Acre
28	233	29	47	37	617	1,653	162,775	0	160,735	27,884	5.76	
40	1198	25	322	359	1884	15286	606,939	93,817	430,248	76,145	5.65	
41	52	0	18	72	669	2844	911,179	0	647,895	83,395	7.77	
42	73	8	30	20	284	1822	492,805	7,909	22,098	4,565	4.84	
59	235	3	71	101	1492	2232	499,251	29,852	349,438	32,420	10.78	
60	148	32	157	125	1414	695	111,977	19,135	64,749	40,592	1.60	
61	27	2	17	38	54	1702	20,607	5,967	9,892	2,873	3.44	
62	219	12	45	57	1307	4540	2,154,120	403,125	131,213	22,176	5.92	
63	61	11	15	8	181	1108	18,781	845	17,481	2,260	7.73	
68	170	7	42	95	857	3854	155,106	26,913	114,940	16,940	6.78	
73	26	6	1	3	114	242	3,966	150	3,694	1,910	1.93	
TOT	2,442	135	765	915	8,873	35,978	5,137,506	587,713	1,952,383	311,160	6.27	

Definitions: (1) Count of structures with CIU=A and NUC=blank (2) Count of structures with CIU=A and NUC=B
(3) Count of structures with CIU=A and NUC=(A,C,D) (4) Count of structures with CIU=A and NUC=(E,F)
(5) Count of structures with CIU=U

WATER DIVERSION SUMMARIES TO VARIOUS USES

WD	TRANS MOUNTAIN OUTFLOW	TRANS-BASIN OUTFLOW	MUNICIPAL	COMMERCIAL	INDUSTRIAL	RECREATION	FISHERY	DOMESTIC/HOUSE HOLD	STOCK
28	769	0	0	0	0	0	1,271	0	0
40	0	0	5,291	0	1,012	0	6,656	1,033	12,170
41	0	0	8,548	0	0	0	7,000	0	1,892
42	457,529	0	10	0	74	0	0	59	0
59	0	0	2,536	0	0	2,721	111,459	0	0
60	0	0	2,057	2	1,896	0	109	284	21
61	0	0	0	0	0	0	0	0	538
62	656	354,981	674	0	0	0	11,886	6	2,654
63	0	0	0	0	0	0	0	0	454
68	0	0	1,918	0	0	64	229	251	8,229
73	0	0	0	0	0	0	0	0	6
TOT	458,954	354,981	21,034	0	2,982	2,785	138,610	1,633	25,964

WATER DIVERSION SUMMARIES TO VARIOUS USES, continued

WD	AUGMEN- TATION	EVAPO- RATION	GEO- THERMAL	SNOW MAKING	MIN STREAM FLOW	POWER GENERATION	WILDLIFE	RECHARGES	OTHER
28	0	0	0	0	0	0	0	0	0
40	64	7,195	0	0	0	0	0	0	973
41	0	0	0	0	0	0	0	0	245,759
42	0	22	0	0	0	0	0	0	0
59	0	3,031	0	214	0	0	0	0	0
60	10	0	0	0	0	23,666	0	0	0
61	0	0	0	0	0	0	0	303	3,907
62	897	26,986	0	0	0	1,220,596	0	0	0
63	0	60	0	0	0	29	0	0	0
68	129	2,435	0	0	0	0	0	0	0
73	0	23	0	0	0	0	0	0	0
TOT	1100	39,752	0	214	0	1,244,291	0	303	250,639

2004
Water Court Activities

Applications for Decrees		209
Consultations with Referee		265
Decrees Issued by Water Court		284
Dismissals		10
Complaints		0
	<u>Structures</u>	<u>Cases</u>
New Conditional Water Rights		56
Diligence on Conditional Rights		40
Cancellations of Conditional Rights		26
Conditional Rights Made Absolute		39
Underground Water Rights Adjudicated	127	33
Surface Water Rights Adjudicated	468	236
Water Storage Rights Adjudicated	126	68
Plans for Augmentation Adjudicated		16
Change of Water Rights / Location		21
Change of Water Rights / Use Adjudicated		5
In-stream Flow Rights Adjudicated		0

**APPENDIX E
DIVISION IV
2004 RIVER CALLS**

Stream Affected	Name of Calling Structure	Admin # of Calling Structure	Date of Call	Duration of Call	Person Placing Call	Most Senior Curtailed Structure	Admin # of the Most Senior Curtailed Structure
Water District 28							
Razor Creek	Hirdman Ditch 1, 2, & 3	10736.00000 10737.00000	4/17/04	Season	Greg Peterson	Snyder Ditches Nos. 1 & 2	11109.00000
Razor Creek	Kennedy No. 1 & 2	10743.00000 10301.00000	4/17/04	Season	Greg Peterson	Snyder Ditches Nos. 1 & 2	11109.00000
Razor Creek	Kennedy No. 3, 4 & 5	16192.10348 16192.11079 16192.11809	4/17/04	Season	Greg Peterson	Anna No. 1 Ditch	16192.12540
Tomichi Creek	Arch Irrigating Ditch Enlargement	22797.00000	6/15/04	7/1/04	Greg Peterson	Sargents No. 1 Ditch	24074.21549
Cochetopa Creek	Smith Ford No. 2	16192.11109 16192.12935 16192.13666 16192.15462 17698.00000	7/13/04	7/28/04	Wade Collins	Tarbell Ditch	24074.23546
Water District 40							
Minnesota Creek	Minnesota Canal	14413.13758	6/19/04	Season	Willy Kistler	Turner Ditch	21263.17451
Smith Fork Creek	Crawford Clipper Ditch	29261.00000	4/24/04	5/3/04	Bill Linnan	Smith Fork Feeder Canal	38064.35309
Smith Fork Creek	Crawford Clipper Ditch	29261.00000	5/14/04	10/31/04	Bill Linnan	Smith Fork Feeder Canal	38064.35309
Smith Fork Creek	Grandview Canal	21263.16523	5/28/04	10/31/04	Saddle Mt. Highline	Saddle Mt. Highline	21757.00000
Smith Fork Creek	Crawford Clipper Ditch	19413.15432	6/15/04	10/31/04	Bill Linnan	Grandview Canal	21263.16523
Crystal Creek	Cedar Canon Iron Springs	12350.00000	6/15/04	10/31/04	Leroy McLaughlin	Dyer Ditch	21263.18762
Crystal Creek	Cedar Canon Iron Springs	12350.00000	6/15/04	10/31/04	Leroy McLaughlin	Crystal Valley Ditch	21263.14010

**APPENDIX E
DIVISION IV
2004 RIVER CALLS**

Stream Affected	Name of Calling Structure	Admin # of Calling Structure	Date of Call	Duration of Call	Person Placing Call	Most Senior Curtailed Structure	Admin # of the Most Senior Curtailed Structure
Water District 40 (cont.)							
Smith Fork Creek	Crawford Clipper Ditch	19413.15797	6/29/04	10/31/04	Bill Linman	Virginia Ditch	19413.13867
Smith Fork Creek	Crawford Clipper Ditch	13076.00000	7/23/04	9/22/04	Bill Linman	Needle Rock Ditch	14077.00000
Smith Fork Creek	Crawford Clipper Ditch	13076.00000	7/27/04	9/23/04	Bill Linman	Daisy Ditch	13798.00000
North Fork Gunnison River	Short Ditch	25807.19783	7/6/04	Season	Tom Curry	Stewart Ditch	25807.22261
North Fork Gunnison River	Paonia Ditch	14413.12114	7/6/04	Season	Olen Lund	Stewart Ditch	19415.16770
North Fork Gunnison River	North Fork Farmers	16882.00000	7/6/04	Season	Jess Campbell	Stewart Ditch	19415.16770
North Fork Gunnison River	Fire Mtn. Canal	31924.31197	7/6/04	9/1/04	Merritt Denison	Lee Cr. Ditch No. 2	39308.00000
North Fork Gunnison River	Stewart Ditch	19415.16770	7/6/04	Season	Dale Todd	Ditch No. 3 Ditch	21263.17335
Buck Creek	John Medved No. 3	29260.26875	7/12/04	8/17/04	Gary Volk	Streber Ditch	47481.40329
Buck Creek	No. 2 Buck Creek	29260.23145	7/12/04	8/17/04	Pete Borich	Streber Ditch	47481.40329
Hubbard Creek	Terror D. Ext.	16072.00000	7/2/04	Season	Richard Ruden	Overland Ditch	21263.15919
Hubbard Creek	Deer Trail Ditch	14915.00000	7/20/04	Season	Bob Barnes	Overland Ditch	21263.15919
Terror Creek	Terror Ditch	14413.12764	7/2/04	Season	Richard Ruden	Overland Ditch	21263.15919
Terror Creek	Holybee Ditch	12370.00000	7/10/04	Season	Bob Beauter	Terror Ditch	14413.12764
Terror Creek	Fawcett Ditch	12370.00000	7/12/04	Season	Robert Milner	Terror Ditch	14413.12764
Muddy Creek	Ditch No. 2 Ditch	21263.17335	7/8/04	Season	BJ Hockenberry	Divide Cr. Highline	23927.00000
Muddy Creek	Ditch No. 3 Ditch	21263.17335	7/14/04	Season	Larry McIntire	Ditch No. 2 Ditch	21263.17335
Youngs Creek	Carbonate Camp Ditch	25807.14975	4/1/04	Season	Anna Maudlin	Cherokee Ditch	25807.21092
Youngs Creek	Childs Ditch	25807.14427	4/1/04	Season	Chan Fogg	Carbonate Camp Ditch	25807.14975
Youngs Creek	Childs Ditch	25807.14414	4/1/04	Season	Chan Fogg	Childs Ditch	25807.14427

**APPENDIX E
DIVISION IV
2004 RIVER CALLS**

Stream Affected	Name of Calling Structure	Admin # of Calling Structure	Date of Call	Duration of Call	Person Placing Call	Most Senior Curtailed Structure	Admin # of the Most Senior Curtailed Structure
-----------------	---------------------------	------------------------------	--------------	------------------	---------------------	---------------------------------	--

Stream Affected	Name of Calling Structure	Admin # of Calling Structure	Date of Call	Duration of Call	Person Placing Call	Most Senior Curtailed Structure	Admin # of the Most Senior Curtailed Structure
Water District 40 (cont.)							
Youngs Creek	Red Bluff Ditch	25807.14414	4/1/04	Season	Les Haddan	Childs Ditch	25807.14427
Youngs Creek	Lookout Ditch	20501.17636	4/1/04	Season	Bob Morris	Red Bluff Ditch	25807.14414
Youngs Creek	Cherokee Ditch	20501.16893	4/1/04	Season	Tony Reed	Lookout Ditch	20501.17636
Youngs Creek	Childs Ditch	20501.14854	4/1/04	Season	Chan Fogg	Cherokee Ditch	20501.16893
Youngs Creek	Santa Fe Ditch	20501.14413	4/1/04	Season	Todd Betz	Childs Ditch	20501.14854
Youngs Creek	Santa Fe Ditch	13877.00000	4/1/04	Season	Todd Betz	Santa Fe Ditch	20501.14413
Youngs Creek	Red Bluff Ditch	13398.00000	4/1/04	Season	Les Haddan	Santa Fe Ditch	13877.00000
Youngs Creek	Broncho Ditch	13254.00000	4/1/04	Season	Lee Frost	Red Bluff Ditch	13398.00000
Youngs Creek	Childs Ditch	13141.00000	4/1/04	Season	Chan Fogg	Broncho Ditch	13254.00000
Happy Hollow	Happy Hollow Ditch	20501.16181	3/24/04	Season	John Alward	Right Hand Ditch	20501.16315
Happy Hollow	Lucky No. 1 Ditch	20501.13240	3/24/04	Season	Darrell Geyer	Daisey Ditch	20501.13301
Happy Hollow	Pumpkin Swag Ditch	20501.16932	4/2/04	Season	Joe Carlsson	Lucky No. 2 Ditch	20501.17258
Happy Hollow	Pumpkin Swag Ditch	20501.16932	4/6/04	Season	Joe Carlsson	Lucky No. 2 Ditch	20501.17258
Happy Hollow	HJ Neighbors Ditch	21263.15308	4/2/04	Season	Joe Carlsson	Lucky Ditch 1 st Enlarg.	25894.15811
Happy Hollow	Pumpkin Swag	20501.16932	4/2/04	4/6/04	Joe Carlsson	Lucky #2 Ditch	20501.17258
Happy Hollow	Pumpkin Swag	20501.16932	4/6/04	Season	Joe Carlsson	Lucky #2 Ditch	20501.17258
Happy Hollow	Cartwright #1	20501.15675	4/1/04	Season	Ken Hillis	Pumpkin Swag	20501.16932
Happy Hollow	Right Hand Ditch	20501.16315	5/25/04	Season	Bob Anderson	Slaughter Ditch	24894.12934
Happy Hollow	Cottolene Ditch	20501.15054	4/6/04	Season	Ralph Wallace	Cartwright Ditch	20501.15675
Happy Hollow	Hamilton Seep Ditch	20501.15035	4/1/04	Season	Mel Smith	Pumpkin Swag	20501.16932
Happy Hollow	Daisy Ditch	20501.13301	4/1/04	4/23/04	Ken Sodowsky	Cartwright Ditch	20501.15675
Happy Hollow	Daisy Ditch	20501.13301	7/22/04	9/28/04	Ken Sodowsky	Cartwright Ditch	20501.15675
Happy Hollow	Daisy Ditch	20501.13301	9/28/04	10/11/04	Ken Sodowsky	Cartwright Ditch	20501.15675
Kiser Creek	Roseberry Ditch	20501.13301	6/7/04	Season	Chan Fogg	Kiser Ditch	20501.14413
Kiser Creek	Kiser Ditch	13377.00000	4/1/04	Season	Bill Kissner	Roseberry Ditch	20501.13301

**APPENDIX E
DIVISION IV
2004 RIVER CALLS**

Stream Affected	Name of Calling Structure	Admin # of Calling Structure	Date of Call	Duration of Call	Person Placing Call	Most Senior Curtailed Structure	Admin # of the Most Senior Curtailed Structure
Water District 40 (cont.)							
Kiser Creek	Lakefork Ditch	13356.00000	4/1/04	6/6/04	Ken Sodowsky	Kiser Ditch	13377.00000
Kiser Creek	Lakefork Ditch	13356.00000	6/7/04	Season	Ken Sodowsky	Kiser Ditch	13377.00000
Sand Creek	Sand Creek Ditch	20501.14737	4/26/04	Season	John Buckheim	Todd Ditch	20501.15066
Forked Tongue Creek	Perkins Ditch	13395.00000	5/3/04	Season	Rolf Sanberg	Forked Tongue Ditch	13399.00000
Oak Creek	Sanberg Ditch	31924.22044	5/3/04	Season	Rolf Sanberg	Porter #1 Reservoir	21746.00000
Doughspoon Creek	Mt. View Mesa Ditch	38064.23998	5/19/04	Season	Steve Kehmeier	Non-decreed water	
Doughspoon Creek	Red Rock Ditch	20501.18864	11/5/04	Season	Corky Austin	Mt. View Mesa Ditch	38064.23998
George & Camp Creek	Blake Ditch	20501.13605	4/26/04	Season	Nate Hawkins	Cedar Park Ditch	20501.14413
George Creek	West Ditch	12407.00000	5/3/04	Season	Rolf Sanberg	Cedar Park Ditch	13566.00000
George Creek	West Ditch	20501.14413	5/3/04	Season	Rolf Sanberg	Daisy Ditch	20501.13301
George Creek	Cedar Park Ditch	13566.00000	5/3/04	Season	Rolf Sanberg	Carbon Ditch	13685.00000
George Creek	Cedar Park Ditch	20501.14413	5/3/04	Season	Rolf Sanberg	Granby Ditch	20501.16192
Ward Creek	Todd Ditch	20501.15066	3/29/04	Season	Tracy Robb	Rowell Ditch	20501.16192
Ward Creek	Rowell Ditch	20501.16192	3/30/04	Season	Paul Thompson	Sunrise Ditch	20501.16192
Ward Creek	Sandstone Bluff	13437.00000	4/27/04	Season	John Buckheim	Lake Fork Ditch	13356.00000
Ward Creek	Rowell Ditch	20501.16192	4/27/04	Season	Paul Thompson	Sunrise Ditch	20501.18185
Ward Creek	Gard Ditch	12844.00000	5/3/04	Season	Rolf Sanburg	Childs Ditch	13141.00000
Ward Creek	Sunrise Ditch	20501.18185	6/2/04	Season	Jack Arney	Forrest Res.	25807.19217
Surface Creek	Alfalfa Ditch	11674.00000	4/3/04	Season	Billy Bookout	Orchard Ranch Ditch	12182.00000
Surface Creek	Orchard Ranch Ditch	12182.00000	4/5/04	Season	Norm Kehmeier	Settle Ditch	12503.00000
Surface Creek	Butte Ditch	13112.00000	4/5/04	Season	Jeff Widner	Eric Johnson Ditch	13120.00000
Surface Creek	Bonita Ditch	13514.00000	4/11/04	Season	Elmer Ferganchick	Horseshoe Ditch	13615.00000
Surface Creek	Butte Ditch	12112.00000	4/12/04	Season	Jeff Widner	Eric Johnson Ditch	13120.00000

**APPENDIX E
DIVISION IV
2004 RIVER CALLS**

Stream Affected	Name of Calling Structure	Admin # of Calling Structure	Date of Call	Duration of Call	Person Placing Call	Most Senior Curtailed Structure	Admin # of the Most Senior Curtailed Structure
-----------------	---------------------------	------------------------------	--------------	------------------	---------------------	---------------------------------	--

Stream Affected	Name of Calling Structure	Admin # of Calling Structure	Date of Call	Duration of Call	Person Placing Call	Most Senior Curtailed Structure	Admin # of the Most Senior Curtailed Structure
Water District 40 (cont.)							
Surface Creek	Trickle Ditch	20501.13574	4/14/04	Season	Mel Smith	Horseshoe Ditch	20501.14366
Surface Creek	Eric Johnson Ditch	13120.00000	4/19/04	Season	Tom Foster	Bonita Ditch	13514.00000
Surface Creek	Fogg Ditch	12876.00000	4/21/04	Season	Harmon Lowman	Forrest Ditch	12881.00000
Surface Creek	Shepard Ditch	12717.00000	4/23/04	Season	Bill Hamilton	Settle Ditch	12503.00000
Surface Creek	Fogg Ditch	12876.00000	4/25/04	Season	Harmon Lowman	Forrest Ditch	12881.00000
Surface Creek	Shepard Ditch	12717.00000	4/26/04	Season	Bill Hamilton	Settle Ditch	12503.00000
Surface Creek	Bonita Ditch	13514.00000	4/28/04	Season	Elmer Ferganchick	Horseshoe Ditch	13615.00000
Surface Creek	Weir & Johnson Ditch	20501.13223	4/29/04	Season	Jim Vela	Omega Ditch	20501.13240
Surface Creek	Trickle Ditch	20501.13574	5/1/04	Season	Mel Smith	Horseshoe Ditch	20501.14366
Surface Creek	Coldwater Ditch	20501.14750	5/4/04	Season	Lou Bickmore	Gurney Ditch	20501.15432
Surface Creek	Cedar Mesa Ditch	20501.16329	5/5/04	Season	Jerry Figueroa	Rose Ditch	20501.16527
Surface Creek	Lone Pine Ditch	20501.17790	5/6/04	Season	Diek Jones	Klondyke Ditch	20501.18058
Surface Creek	Gurney Ditch	20501.15432	5/12/04	Season	Arlo Hanson	Cedar Mesa Ditch	20501.16329
Surface Creek	Coldwater Ditch	20501.14750	5/13/04	Season	Lou Bickmore	Gurney Ditch	20501.15432
Surface Creek	Trickle Ditch	20501.13574	5/14/04	Season	Mel Smith	Coldwater Ditch	20501.14750
Surface Creek	Gurney Ditch	20501.15432	5/19/04	Season	Arlo Hanson	Cedar Mesa Ditch	20501.16329
Surface Creek	Cedar Mesa Ditch	20501.16329	5/20/04	Season	Jerry Figueroa	Rose Ditch	20501.16527
Surface Creek	Rose Ditch	20501.16527	5/24/04	Season	Ron Shaver	Lone Pine Ditch	20501.17790
Surface Creek	Gurney Ditch	20501.15432	5/26/04	Season	Arlo Hanson	Cedar Mesa Ditch	20501.16329
Surface Creek	Cedar Mesa Ditch	20501.16329	5/27/04	Season	Jerry Figueroa	Rose Ditch	20501.16527
Surface Creek	Coldwater Ditch	20501.14750	5/31/04	Season	Lou Bickmore	Gurney Ditch	20501.15432
Surface Creek	Orchard Ranch Ditch	20501.14413	6/1/04	Season	Norm Kehmeier	Weir & Johnson Ditch	20501.14735
Surface Creek	Horseshoe Ditch	20501.14366	6/2/04	Season	Bud Burgess	Orchard Ranch Ditch	20501.14413
Surface Creek	Paradise Ditch	20501.13331	6/12/04	Season	Bill Kissner	Trickle Ditch	20501.13574
Surface Creek	Bonita Ditch	13514.00000	6/13/04	Season	Elmer Ferganchick	Horseshoe Ditch	13615.00000

**APPENDIX E
DIVISION IV
2004 RIVER CALLS**

Stream Affected	Name of Calling Structure	Admin # of Calling Structure	Date of Call	Duration of Call	Person Placing Call	Most Senior Curtailed Structure	Admin # of the Most Senior Curtailed Structure
Water District 40 (cont.)							
Surface Creek	Butte Ditch	13112.00000	6/14/04	Season	Jeff Widner	Eric Johnson Ditch	13120.00000
Surface Creek	Forest Ditch	12881.00000	6/21/04	Season	Ruth Peterson	Butte Ditch	13112.00000
Surface Creek	Fogg Ditch	12876.00000	6/23/04	Season	Harmon Lowman	Forrest Ditch	12881.00000
Surface Creek	Orchard Ranch Ditch	12182.00000	6/25/04	Season	Norm Kehmeier	Settle Ditch	12503.00000
Surface Creek	Alfalfa Ditch	11674.00000	6/6/04	Season	Bill Bookout	Orchard Ranch Ditch	12182.00000
Leroux Creek	Stull Ditch	21089.15502	6/2/04	Season	David Sievers	Overland Ditch	21089.15919
Leroux Creek	Highline Ditch	14413.13606	6/22/04	Season	Mark Smith	Stull Ditch	21089.15502
Leroux Creek	Currant Creek Ditch	12269.00000	8/13/04	Season	Dennis Wolf	Cow Creek Ditch	12276.00000
Leroux Creek	Highline Ditch	11779.00000	8/13/04	Season	Mark Smith	Currant Creek Ditch	12269.00000
Water District 41							
Horsfly Creek	Albush Ditch	24221.22524	3/19/04	6/1/04	Mardell Sanders	Tierra Colorado Ditch	27184.21672
Dolores Creek	Mock Ditch	24221.22524	5/3/04	6/1/04	Gary Pope	(No water to curtail by time of call)	
Spring Creek	Shavano Valley Ditch	12744.00000	5/27/04	3/30/04	Wayne Brown	Keller Brothers Ditch	29038.12875
Water District 42							
Kannah Creek	Highline Ditch	22848.21251	5/5/04	Season	Danny Vanover	Florence H. Berry Ditch	23490.00000
Kannah Creek	Junata 1 st Enlarged Ditch	32750.00000	5/5/04	Season	Danny Vanover	Junata 1 st Enlarged Ditch	52950.00000
Kannah Creek	Kannah Creek Extension Ditch	12724.00000	4/20/04	Season	Edward M. Gardner	Smith Irrigation Ditch	13007.00000
Kannah Creek	Northwestern Ditch	12724.00000	4/6/04	Season	Harriet Whiting	Smith Irrigation Ditch	13007.00000

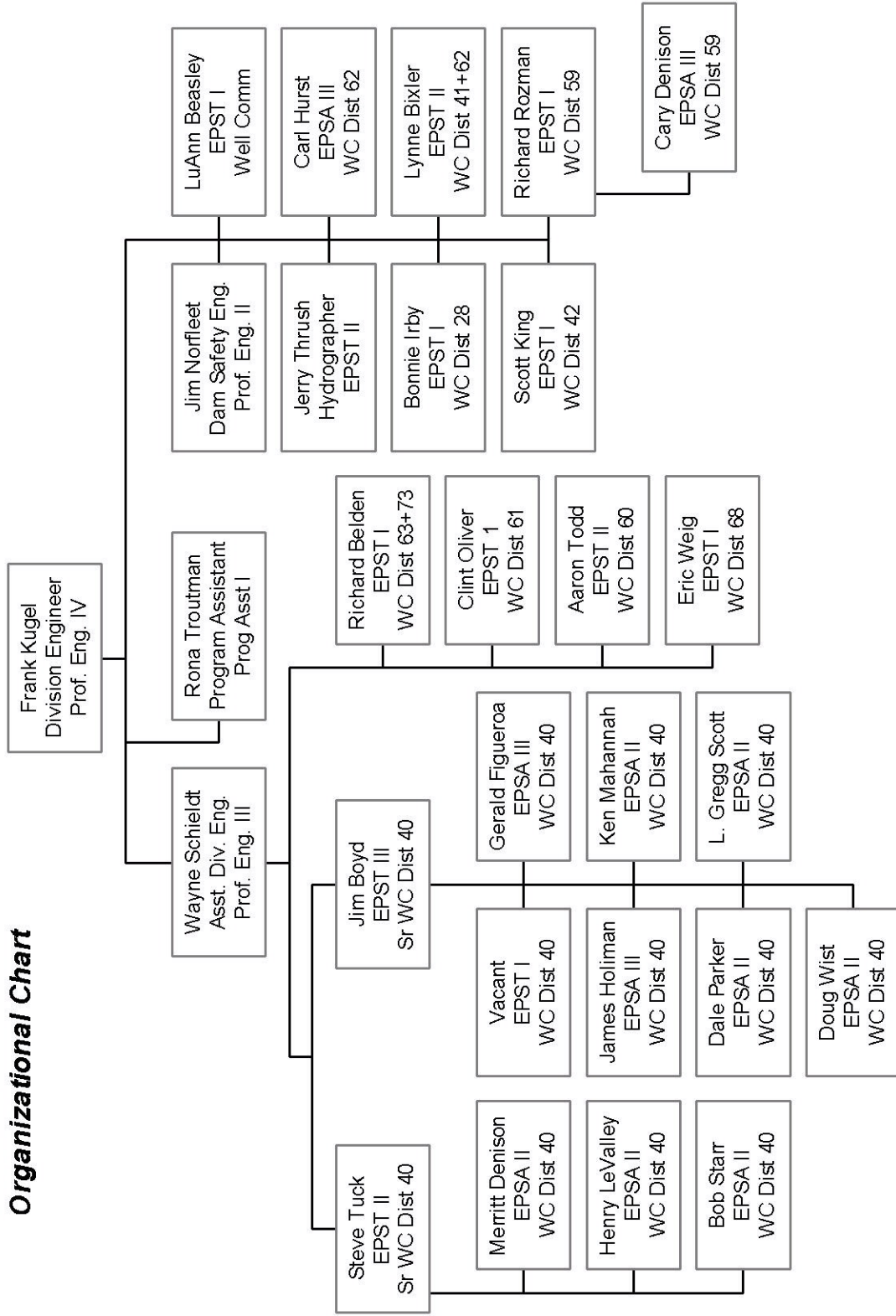
**APPENDIX E
DIVISION IV
2004 RIVER CALLS**

Stream Affected	Name of Calling Structure	Admin # of Calling Structure	Date of Call	Duration of Call	Person Placing Call	Most Senior Curtailed Structure	Admin # of the Most Senior Curtailed Structure
Water District 42 (cont.)							
Kannah Creek	Bowen Private Ditch	13121.00000	4/6/04	Season	Roberta Dalton	Northwestern Ditch	13234.00000
Kannah Creek	Highline Ditch	13904.00000	4/1/04	Season	Butch Kimmel	Highline Ditch	22848.21251
Kannah Creek	Bales, Williams, Morrison Ditch	12724.00000	3/31/04	Season	John Carelli	Smith Irrigation Ditch	13007.00000
Kannah Creek	Juniata 1 st Enlarged Ditch	12724.00000	3/22/04	Season	Danny Vanover	Smith Irrigation Ditch	13007.00000
Kannah Creek	Juniata 1 st Enlarged Ditch	52950.00000	3/22/04	Season	Danny Vanover	None	
Water District 59							
Slate River	Slate River ISF	47558.00000	8/9/04	Season	Jeff Baessler	CBP Well (Rivergreen)	49308.49144
Water District 60							
Spring Creek	Crabtree Ditch	30604.30041	4/22/04		Keith Gross	No structures to curtail	
Maverick Draw	Priestly Ditch No. 1	17404.00000	4/1/04	5/1/04	Donald Wilson	No structures to curtail	
Maverick Draw	Priestly Ditch No. 2	18475.00000	4/1/04	5/1/04	Donald Wilson	No structures to curtail	
Maverick Draw	Smuggler Ditch Pump Site	16010.00000	6/5/04	Season	Calvin Calhoun	Maverick Ditch Enlargement	21130.00000
Naturita Creek	Maverick Draw Ditch	12524.00000	7/1/04	7/22/04	Earl Reams	Lilylands Canal	13060.00000
Naturita Creek	Grove Ditch	12205.00000	7/14/04	Season	Scott Hughes	Lone Cone Ditch	14549.00000
San Miguel River	Highline Canal	16588.00000	8/11/04	9/5/04	Tandy Morgan	Pleasant Valley Ditch	25826.24289
San Miguel River	Nucla Power Plant	13058.00000	8/11/04	9/5/04	Nucla Power Plant	Highline Canal	23681.21526
San Miguel River	Goulding Ditch	14914.00000	8/11/04	9/5/04	Don Bennett	Highline Canal	23681.21526
San Miguel River	Reed Chatfield Ditch a/p	16984.00000	8/11/04	9/5/04	Town of Naturita	Highline Canal	23681.21526
San Miguel River	BCD Ditch	13058.00000	8/11/04	9/5/04	Earl Reams	Highline Canal	23681.21526

**APPENDIX E
DIVISION IV
2004 RIVER CALLS**

Stream Affected	Name of Calling Structure	Admin # of Calling Structure	Date of Call	Duration of Call	Person Placing Call	Most Senior Curtailed Structure	Admin # of the Most Senior Curtailed Structure
Water District 61							
No Calls							
Water District 62							
Little Cimarron River	Collier Ditch	14489.00000	7/8/04	8/9/04	Linda Daniels	McKinley Ditch	20393.20218
Little Cimarron River	McKinley Ditch	13393.00000	8/9/04	9/25/04	Larry Collins	Collier Ditch	14489.00000
Big Cimarron River	McMinn Ditch	12143.00000	8/12/04	10/12/04	Mike Richard	Coal Creek Ditch	20393.18035
Water District 63							
No Calls							
Water District 68							
Horsefly Creek	Albush Ditch	24221.22524	3/22/04	6/1/04	Mardell Sanders	Tierra Colorado Ditch	27184.21672
Horsefly Creek	Tierra Colorado Ditch	27184.21672	3/29/04	6/8/04	Mina Voss	Williams D. Nos. 1, 2 & 3	29554.23861
Water District 73							
Coates Creek	Moorland Ditch	22848.22088	4/6/04	Season	Jay Vanloan	AR Hall Ditch	30895.27130
Chiquita Dolores	Upper Saxbury Ditch	22848.17806	7/7/04	Season	Mtn. Island Ranch	Chiquito Dolores Ditch	17610.13149

**Division IV
Organizational Chart**



OFFICE ADMINISTRATION AND WORKLOAD MEASURES
ACTIVITY SUMMARY

WATER DIVISION NO. 4

2004 CALENDAR YEAR

<u>ACTIVITY</u>	<u>TOTALS</u>
Professional and Technical Staff	3
Clerical Staff	1
Water Commissioners FTE (Full / Part-Time)	23
2004 Decreed Surface Rights	468
Surface Rights Administered (visits)	21,678
Storage Rights Administered (visits)	4,880
2004 Decreed Wells	127
2004 Decreed Plans of Augmentation	16
Consultations with Referee	265
Water Court Appearances	58
Meetings with Water Users	157
Contacts to give public assistance	*19,003
*Includes Water Commissioner Contacts	