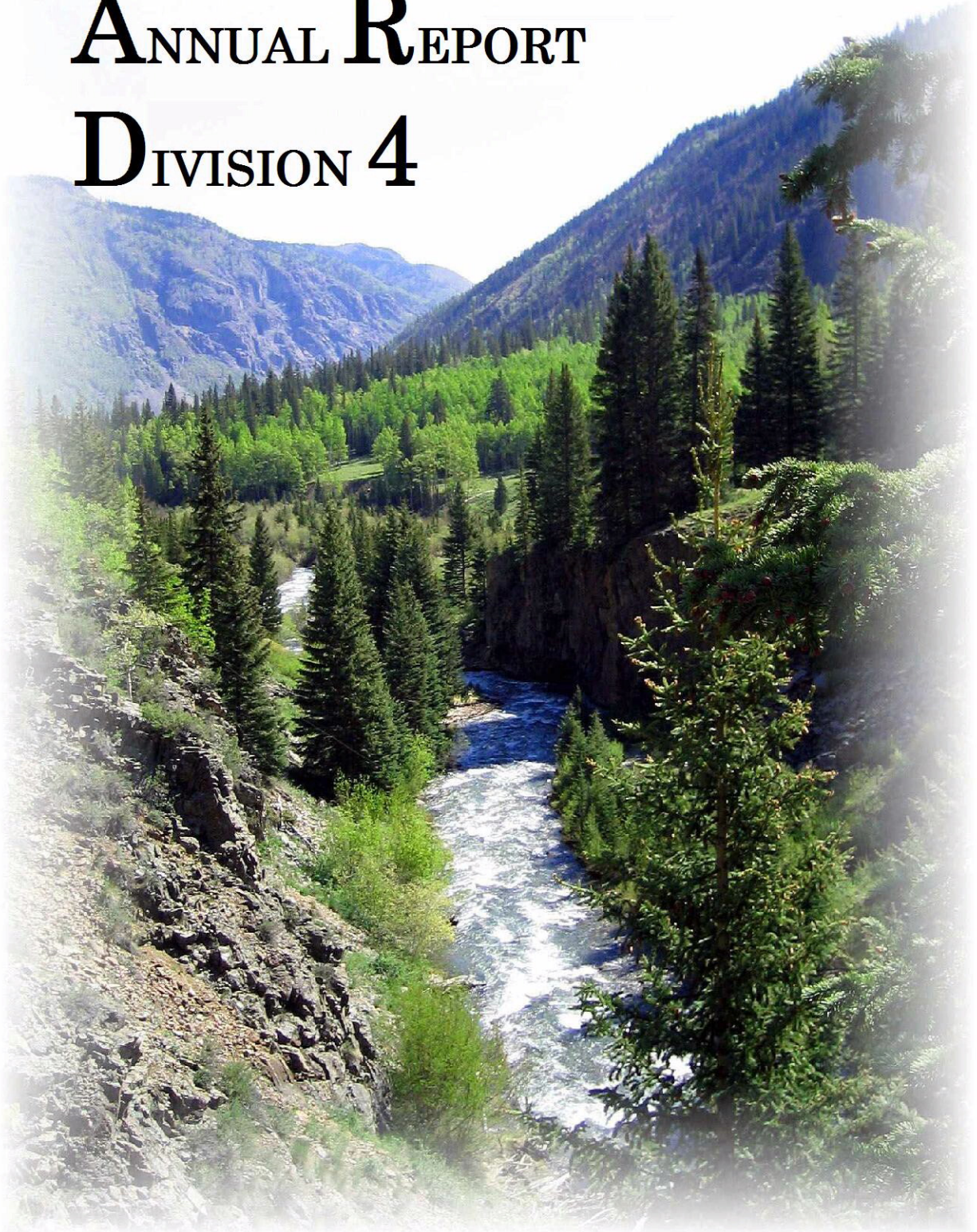


ANNUAL REPORT

DIVISION 4



2003



**COLORADO DIVISION OF WATER RESOURCES
ANNUAL REPORT
DIVISION 4 - 2003**

INDEX

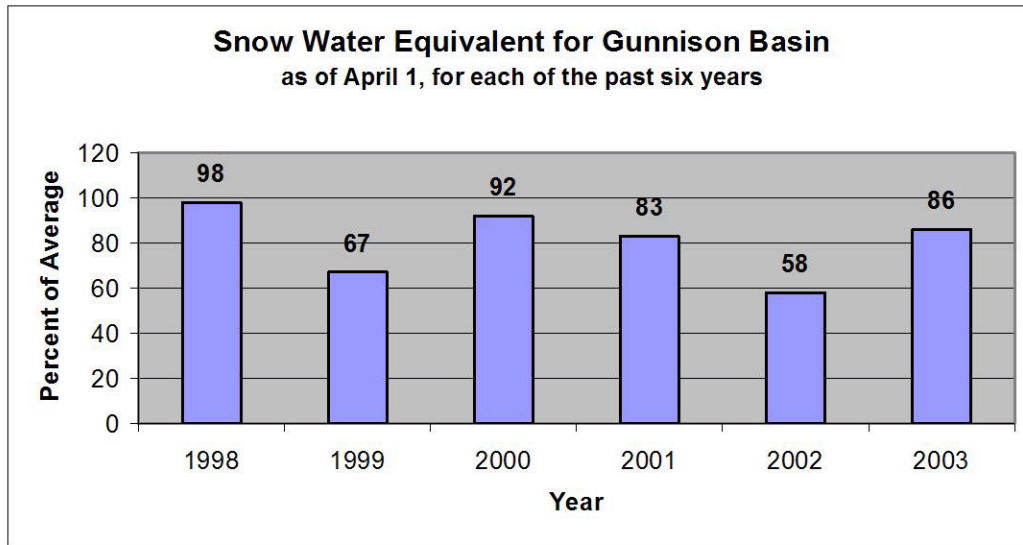
| <u>Topic</u> | <u>Page</u> |
|--|--------------------|
| <u>Accomplishments</u> | |
| Water Administration..... | 1 |
| Personnel..... | 3 |
| Budget..... | 4 |
| Hydrography..... | 5 |
| Dam Safety..... | 6 |
| Groundwater..... | 6 |
| Records and Information..... | 7 |
| Special Projects..... | 7 |
| Court Hearings and Consultations..... | 7 |
| <u>Significant Water Issues</u> | 8 |
| <u>Involvement With The Community</u> | 9 |
| <u>Influential Case Law, Statutes, and Projects</u> | 9 |
| <u>Greater Efficiency in Division 4</u> | 12 |
| <u>Tabular Data</u> | |
| Transmountain Diversions..... | 14 |
| Storage Summaries..... | 15 |
| Water Diversion Summaries..... | 29 |
| Water Court Activities..... | 32 |
| River Calls..... | 33 |
| <u>Table of Organization - Personnel</u> | 41 |
| <u>Office Administration and Workload Measures</u> | 42 |

Note: Cover Photo – Henson Creek near Lake City

ACCOMPLISHMENTS

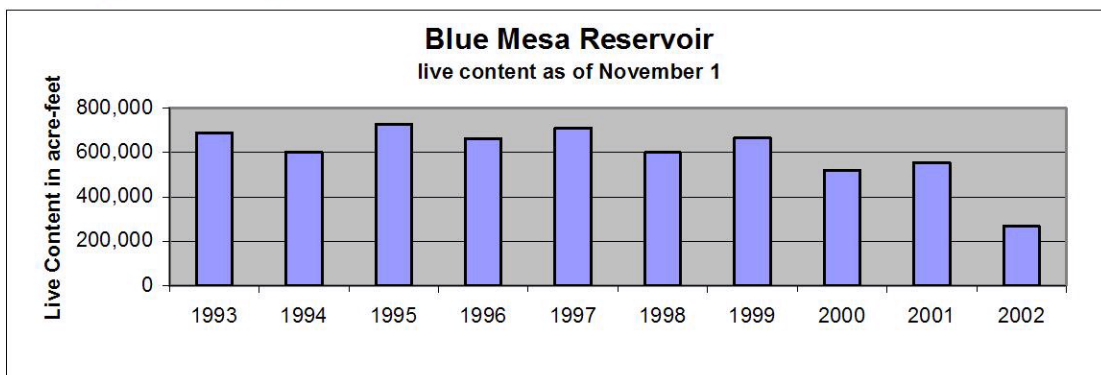
WATER ADMINISTRATION

The 2003 Water Year continued the dry trend of the previous five years. Although conditions were somewhat improved in Division 4 over those of the previous year, the 2003 irrigation season again experienced numerous water shortages across the Gunnison and San Miguel Basins. One key indicator of the water supply is the amount of snowpack as of April 1st for any given year, as shown below.



The April 1, 2003 snowpack was 86 percent of normal, which by itself is not abnormally dry. Unfortunately the five previous years averaged only 80 percent of normal, and this prolonged dry trend has had an adverse impact on the aquifers and reservoirs of our basin. We continued to receive numerous reports of wells and springs going dry.

The content of Blue Mesa Reservoir clearly shows the impact of these back-to-back dry years. It had only 267,000 acre-feet in live storage to begin the 2003 irrigation year (November 1, 2002), which was the lowest amount since 1977 and was only 44 percent of the long-term average for this date.



Irrigation year precipitation totals for various recording stations in Division 4 ranged from 72 percent of normal at Cedaredge and 74 percent at Montrose, to 98 percent at Norwood and 104 percent at Gunnison. The growing conditions were somewhat worse than these numbers reflect since a large portion of the annual precipitation occurred in late August and September, which is after many of the area crops were harvested.

Division 4 did experience a near-normal peak runoff in a number of its streams due to abnormally warm temperatures in mid- to late May. The Gunnison River at Gunnison experienced a daily peak flow of 3260 cfs on June 1, which compares to a normal spring peak of around 2600 cfs. Surface Creek at Cedaredge recorded a 110 cfs daily peak on May 18, compared to an average of 90 cfs. These peak flows were important in that they reflected the timing of the spring runoff. The relatively high peaks during an otherwise dry year allowed additional storage to occur because it allowed a number of junior reservoirs to be in priority and capture some of the limited volume of runoff.

The below-average water supply resulted in a number of shortages across the Gunnison and San Miguel basins. The Redlands Power Canal near Grand Junction did not have its decreed amount of 750 cfs available for most of the period from late November through early April. This is noteworthy in that Redlands is near the downstream end of the Gunnison Basin and could potentially call out nearly all upstream winter storage. Fortunately, Redlands Water and Power Company signed a contract with the Colorado River Water Conservation District stating that Redlands would not place a call in exchange for a monetary payment.



Gunnison Tunnel Diversion in Black Canyon

The Gunnison Tunnel placed a call for the second year in a row. This had a major impact on the Upper Gunnison basin. The call was placed on July 15th and remained in effect until September 8th. The one significant difference between this year's call and the one of 2002 was that we did not have to curtail all rights junior to the Tunnel's 1913 decree date, but only curtailed down through the 1941 decrees in the Upper Gunnison basin.

The Uncompahgre River also experienced shortages as the Montrose-Delta Canal again called out junior water rights in

the Colona area and Ouray County. Again, both the length and severity of the call were somewhat less than in 2002, and is evidence of the somewhat improved water supply.

Water users on the San Miguel mainstem also were short of water from mid-July through mid-October. As is usually the case, shortages were more severe on the side tributaries. Naturita Creek had a call in early May that called out an 1897 water right for the remainder of the irrigation season.

On the North Fork of the Gunnison, water supply conditions improved markedly from those of the previous year. Despite being only 15-percent of capacity in carry-over storage (normal is 27%), we reached a respectable two-thirds of capacity in reservoirs on the Grand Mesa by the end of the runoff season. The consistently warm May temperatures resulted in a nearly optimal rate of runoff for the below-average snowpack. Most of the direct-flow rights received a considerable amount of water during the peak runoff. Unfortunately, although the peak was slightly above normal, the total volume of runoff was well below normal.

PERSONNEL

Division 4 experienced some significant personnel changes in 2003. In March, Wayne Schieldt, the Division Engineer at the beginning of the year, requested to step down into the Assistant Division Engineer role for personal reasons. The State Engineer, Hal Simpson, approved Wayne's request and named Frank Kugel, previously the Assistant Division Engineer, the Acting Division Engineer. In July, Hal officially appointed Frank the Division Engineer.

There were two retirements that took place in 2003, both involving Water Commissioners on the North Fork of the Gunnison. Bob Starr, the lead Water Commissioner in the Upper North Fork Valley, retired at the end of December after 26 years with DWR. In addition to supervising three Deputy Water Commissioners, Bob handled the complex reservoir administration on the Leroux Creek system. Mr. Starr's expertise in this area will be sorely missed, but the transition to his replacement will be greatly enhanced by Bob's willingness to continue working part-time on the Leroux Creek drainage.

The other retirement in 2003 was that of Cliff Davis. Cliff was the Water Commissioner for the Muddy and Anthracite Creek drainages. Cliff administered some very involved Plans of Augmentation for the three major coal mines in the North Fork Valley, and his lifelong knowledge of this area was an asset to our agency.

The Water Commissioner of the Year in Division 4 for 2003 was Scott King. Scott is our Water Commissioner for Water District 42, which includes Kannah Creek and the lower Gunnison mainstem. Scott also is the Division 4 IT liaison, providing computer support for our individual PCs and the servers in the Montrose and Cedaredge offices.

Scott King put in countless extra hours serving his water users on Kannah Creek. He often worked on



Hal Simpson and Scott King

weekends during the critical administration season to seek the maximum beneficial use for his users. Scott has earned a great deal of respect from the public as a firm but fair enforcer of the priority system.

Scott also performs above and beyond the call of duty in maintaining our computer system. He spent a great deal of his own time taking networking certification courses in an effort to improve his IT skills. Scott has shown a great deal of patience and maintains good spirits while dealing with our most frustrating computer problems. He is a real asset to both staff in Division 4 and the IT Branch in Denver.

Division 4 presented the Water Manager of the Year award to Kathleen Curry, the manager of the Upper Gunnison River Water Conservancy District. Kathleen has been very active in water issues both locally and statewide. She has worked tirelessly in a variety of projects including:

- Pursuit of a basin-wide plan of augmentation
- Obtaining a water service contract to allow continued out-of-priority depletions
- Opposition to the original proposal for the Black Canyon National Park reserved right
- Development of new and existing storage reservoirs, such as Long Branch, Long Lake and Lake San Cristobal
- Perfection of the Taylor Park second fill right and various condition direct flow rights
- Participation in the Gunnison River Recovery Program



Hal Simpson, Kathleen Curry and Frank Kugel

Ms. Curry resigned from her UGRWCD manager position at the end of 2003 to pursue her political aspirations in the Colorado Legislature, where she is eager to represent Western Slope water interests.

BUDGET

The continued dry conditions required more intensive water administration and resulted in the need for more field visits. Unfortunately, severe budget constraints meant that we were unable to meet the field demands of our water users. We ultimately were forced to cut our annual miles driven by eight percent in order to remain within budget. This was due mainly to increased mileage costs for our fleet vehicles, which resulted in a 24% greater cost per mile.

Given these mileage constraints, our staff did an excellent job of maintaining the best level of service possible. In fulfilling our water administration responsibilities, we

communicated with our water users via telephone and email as much as possible to minimize mileage costs. We also relied more heavily on user-supplied data for our diversion records and eliminated some non-essential field inspections for water court diligence filings.

HYDROGRAPHY

This was the year for construction in Division 4, with the installation of numerous concrete ramp flumes, new gaging stations, and satellite monitoring equipment for administrative purposes.

Concrete ramp flumes were installed at Muddy Creek below Paonia Reservoir and Surface Creek near Cedaredge. These flumes provide a stable control for the gages and a more accurate stage/discharge relationship.



Jerry Thrush measuring Selig Canal

As part of an effort to better monitor the return flows from the Uncompahgre Project, an old USGS gage on Cummings Gulch near Delta was refurbished and fitted with an A-35 continuous recorder. A new gage was also installed on Roubideau Creek near Delta and a concrete ramp flume installed (February 2004).

As new Sutron DCP 8210's and 8220's become available, they have replaced the older units. The 8220's are set up for high data rate, providing better real-time data by transmitting every one hour instead of every four. This gives our Water Commissioners more up-to-date information in their daily administration.

Also installed were new shelters and equipment on Razor Creek and Vouga Reservoir east of Gunnison, and new shelters on the two Parshall Flumes measuring the inflows to Vouga. These are valuable administrative sites for the administration of Razor Creek and access of the information from this equipment will save the Water Commissioner considerable amounts of time and mileage.

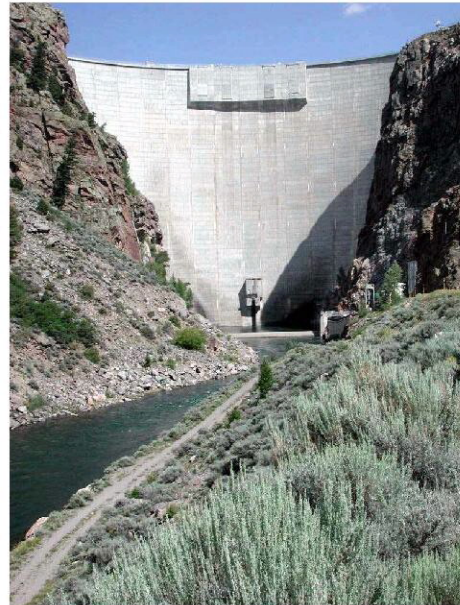
The Division 4 Hydrographer, Jerry Thrush, continues to process and publish information for six stations, three of which are used for diversion records. He also provides administrative measurements for Water Commissioners, ensuring that flumes are accurate and the proper shift is applied.

DAM SAFETY

The Dam Safety Engineer, Jim Norfleet, completed 52 annual dam safety inspections in 2003. Jim also performed 21 construction inspections and 26 follow-up inspections. Many of the area reservoirs continued to have lower-than-normal storage levels, allowing for a more thorough investigation of upstream slopes, and in some cases, outlet intake structures. There was one reservoir storage restriction imposed and three restrictions lifted.

The Water Commissioners inspected 37 Class II, III and IV dams. They also continued to provide valuable input on the day-to-day conditions of dams while performing their water administration duties.

It was another busy year for dam repairs in Division 4. Jim completed six design reviews for new or enlarged structures, plus three reviews for repairs or modifications, and approved two change orders. He also drafted a formal construction acceptance for seven dam repair projects.



Morrow Point Dam

GROUNDWATER

The Well Permitting Program in Division 4 experienced an up-and-down year with regards to levels of new-permit activity. Much of this fluctuation in permitting was due to the dramatic fee increase for new well permits. The fee increased from \$60 to \$440 on March 1st, then to \$480 on July 1st. Unfortunately, the news of the pending increase leaked out in February, causing some well drillers and developers to apply for dozens of permits at the previous \$60 rate. This resulted in a temporary glut of applications, followed by a prolonged decrease in the rate of new applications. Overall, Division 4 processed 678 permit applications in 2003, which compares with 696 in 2002.

The Gunnison Tunnel calls in 2002 and 2003 forced us to take a closer look at groundwater use in the Upper Gunnison Basin. One area where we found illegal use of wells was in subdivisions on the Tomichi Creek drainage just east of Gunnison. Two large subdivisions were found to have individual wells generally permitted as household-use-only. Unfortunately, almost all of these HUUO wells exceeded the terms and conditions of their permit by having extensive irrigation for landscaping. We issued orders for owners of these wells to cease and desist outside usage until their wells were re-permitted to allow for the expanded use. Many of the homeowners took advantage of the Upper Gunnison's resale of Blue Mesa water as an augmentation source and re-permitted their wells to allow for lawn irrigation.

RECORDS AND INFORMATION

Annual diversion records and reservoir reports for Water Year 2003 were completed on schedule. Our water commissioners put a great deal of emphasis on these records, knowing the value they provide to our water users and the public. Lynne Bixler coordinated the data entry and generated the diversion records. Frank Kugel reviewed the diversion records for accuracy and completeness.

The personnel in Division 4 continually strive to produce the most thorough set of diversion records possible with our limited resources. This task has been made easier through the continued efforts of Doug Stenzel of our Denver IT staff. Doug has worked countless hours to develop and improve the Hydrobase data entry program. This is the second year that Division 4 has used the program and has benefited from its many helpful features.

SPECIAL PROJECTS

We spent a great deal of effort researching ownership of water rights in conjunction with Senate Bill 278, which established the Water Administration Fee Program. SB-278 was passed in an attempt to maintain current DWR staffing levels while facing severe budget cuts. This legislation required water users to pay a fee for the administration of their water rights. The Water Administration Fee Program required us to make a concerted effort to obtain the most current ownership records in order to properly bill owners for our water administration costs. A great deal of research was required since there currently is no mechanism where the Division of Water Resources is notified of ownership changes. As a result, our structure database generally contains out-of-date information on ownership and does not indicate whether rights have been split up for land development purposes. In an attempt to accurately identify current owners of water rights for billing purposes, Division 4 staff made countless telephone calls and numerous trips to county assessor's offices. Through this process, we not only improved our ownership database, but we also cleaned up some old tabulation errors and now have the most accurate and up-to-date water rights and structure database we've ever had.

COURT HEARINGS AND CONSULTATIONS

In 2003, 288 cases were filed in Division 4 Water Court. The drought of 2002 brought about an increase of filings early in the year. Many of them were right changes in the upper Gunnison basin that were trying to maximize the use of rights senior to the Gunnison Tunnel. By mid year, it seemed like it was going to be a record number of applications, but by the end of the year, the reaction to the drought had ceased and the final number of applications was about the same as last year.

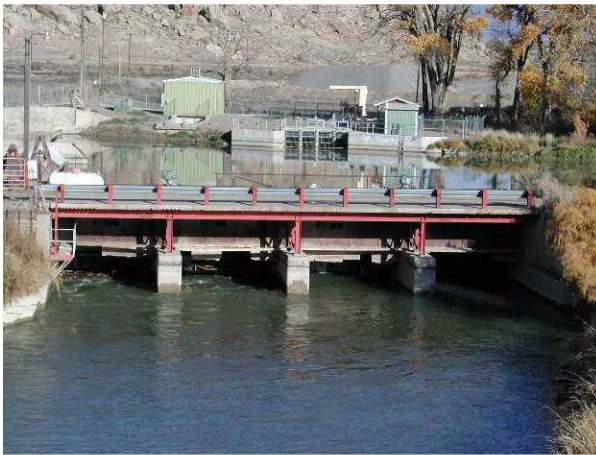
This office did not file a Statement of Opposition in 2003. Since the State budget has been reduced, and legal costs must be minimized, this office works through the consultation process to assure concerns are addressed. We only seek counsel from the Attorney General's office if the Ruling does not satisfy our concerns and we must file a protest. While it places more of a time burden on this office, the consultation process is working very well.

The Consultation process continues to be a valuable service to water users in providing recommendations to the court that maximize the beneficial use of water in the basin while preventing injury to vested water rights. The end result is a decree that is clear, concise, and easily administered.

The Assistant Division Engineer physically attended 95 status conferences and 12 on-site hearings with the Referee, 11 hearings with the Judge, and two trials. This is a substantial time commitment, but is essential in maintaining a good working relationship with Referee Aaron Clay and Water Judge Steven J. Patrick.

SIGNIFICANT WATER ISSUES

Redlands Power Canal Deemed Critical Structure



Redlands Power Canal near Grand Junction

The Redlands Power Canal is a large diversion on the Gunnison River two miles upstream of the confluence with the Colorado River. This canal is used year-round for power generation and is also used for irrigation. One interesting aspect of the Redlands is that it uses some of the generated power to lift water up to higher portions of its service area. It then sells the remaining electricity on a contract basis. Redlands Power Canal has a 1912 decree for 670 cfs, a 1959 decree for 80 cfs, and a 1994 decree for 100 cfs.

The past two winters have seen flows in the Gunnison River that were not sufficient to satisfy even the most senior decree of the Redlands Power Canal. Fortunately, a call reduction agreement with the Redlands Water and Power Company has been in effect each of the past two winters, resulting in no call even though flows have dipped below the stipulated 650 cfs level at their diversion point, the Redlands Power Canal. This agreement has allowed upstream junior reservoirs like Blue Mesa, Ridgway and Taylor Park Reservoirs to remain in priority throughout the winter and early spring storage periods. In 2003, this agreement cost a total of \$40K, half of which was covered by in basin water users (Upper Gunnison - \$14K and Uncompahgre Valley - \$6K), and the other half by the Colorado River Water Conservation District.

Given the fact that the Redlands Water and Power Company was short of water and would have called during each of the past two winters if not for the call reduction agreement, our office decided to designate the Redlands Power Canal as a “critical structure”. This designation became effective December 31, 2003, and resulted in a requirement that all new junior domestic appropriations in the Gunnison Basin provide approved augmentation plans. The ultimate effect of this decision was that virtually all of the Gunnison Basin is now considered over-appropriated.

INVOLVEMENT WITH THE COMMUNITY

The Division 4 staff made an extra effort in 2003 to be involved with the public. The ongoing drought conditions, along with budget constraints and SB-278, made it extremely important to keep our community informed of both the hydrologic and budgetary shortages we faced. To this end, we frequently attended meetings of the UGRWCD, Tri-County, UVWUA, Farmers Water Development, Colorado Cooperative, SWAT4 and other water interest groups.

Division 4 continued its participation in education at the local schools. Jerry Thrush, our hydrographer, demonstrated stream-measuring techniques to some 500 students of District RE-1J at the Water Workshop in Montrose. Frank Kugel was an instructor for a GPS class at Columbine Middle School. The students participated in a geocaching exercise, where they located prizes using GPS receivers.

We were involved with the 2003 Water and Sewer System Management Workshop in Montrose. This workshop was part of a continuing education series sponsored by the Department of Local Affairs. We gave a presentation on our roles and responsibilities in water matters and summarized the history of water administration in Colorado.

We gave a similar presentation in Gunnison at the request of a local users group. Our presentation was aired on the local radio and was well received by the community.

INFLUENTIAL CASE LAW, STATUTES, AND PROJECTS

On January 18, 2001, the Department of Justice (DOJ) representing the National Park Service filed Case 01CW05. This case sought to quantify the water right that was confirmed in US vs. Denver in 1982. This Federal Reserved water right was dated back to March 2, 1933, the date of creation of the Black Canyon National Monument. The case drew an impressive 383 Statements of Opposition, setting a record for the most SOP's ever filed in any Water Court.

In October of 2002, the Court granted a 6-month stay motion, giving the DOJ an opportunity to settle the matter without a trial. The 6-month period expired around April 1, 2003. In a bold and strategic move by the Governor's Office, the Executive Director

for the Department of Natural Resources, Greg Walcher, was sent to Washington DC to broker an agreement to settle this case and save taxpayers millions of dollars in litigation costs. On April 2, 2003, an historic agreement was signed with the US Department of Interior to settle the most controversial Water Court application in Division 4 history. The agreement secured a federal reserved water right for the Gunnison River of 300 cfs in Black Canyon National Park. Those signing the agreement were Commissioner John Keyes of the Bureau of Reclamation, Randy Jones of the National Park Service, Steve Williams, director of the US Fish and Wildlife Service, Colorado Attorney General Ken Salazar, and Greg Walcher, Executive Director of the Colorado Department of Natural Resources.

The agreement stated that the Colorado Water Conservation Board (CWCB) would file for an instream flow water right under Colorado law for “water beyond that which satisfies present and future obligations of the authorized purposes of the Aspinall Unit”. The CWCB water right would have a 2003 priority date. This filing is unique, since the CWCB usually files for water rights for “minimum stream flows...to preserve the natural environment to a reasonable degree”.

The amount of flow available for the filing has been difficult to determine, but is quantified with a formula that is contained in the application. The formula uses the forecasted May 1 to July 31 unregulated inflow to the Aspinall Unit minus the amount necessary to fill the existing decrees (both flow and storage) and minus the amount necessary to satisfy development of the 60,000 af depletion allowance under the Subordination Contract. Based on an analysis done for years 1975 to 2000, there was water available for the CWCB right in 73% of the years.

Another issue to be worked out was the maximum amount for the filing. The main concern was to avoid flooding the City of Delta. In 1995 substantial flows were released out of the Aspinall Unit to avoid an uncontrolled spill. The resultant flows of 14,900 cfs in the Gunnison River at Delta caused flooding damage, but the adverse impacts occurred at flows above 10,000 cfs. Consequently, the CWCB filing will request flows up to 14,500 cfs (May 1 through July 31), but will not be exercised to exceed 10,000 cfs at the Gunnison River below the Gunnison Tunnel gage or at the Delta gage until improvements are made in the floodplain area surrounding Delta.

The filing was presented to the Division 4 Water Court in December of 2003. Only 10 Statements of Opposition were filed, and it is hoped that many of the issues can be resolved through the CWCB public hearing process.

As a result of the April 2 agreement, the commitment was made to accept the 300 cfs flow amount and conclude the case with a decree. The DOJ immediately filed a Motion to Amend Application and an Amended Application. On September 5, environmental organizations filed a complaint in federal court, alleging the Federal Government failed to protect the natural resources of the Black Canyon in the April 2 agreement. A week later they filed a motion for Stay of Proceedings in the Division 4 Water Court until issues in the federal complaint had been resolved. The Attorney Generals Office objected, as did most other objectors in the case, but on October 7, 2002, Judge Steven Patrick granted the motion.

On November 3, 2003, First Assistant Attorney General Carol Angel filed a Motion to Show Cause to the Colorado Supreme Court on behalf of various Colorado State Agencies asking them to overturn Judge Patrick motions to stay the proceedings. The motion stated that the Division 4 Water Court “*unjustifiably delayed the final resolution of the federal reserved water right for the Black Canyon of the Gunnison National Monument and effectively abdicated its jurisdiction and responsibility to determine issues regarding the quantity of water for that water right to the federal district court. The water court’s abuse of discretion has seriously prejudiced the interest of the Petitioners, hundreds of other opposers in the Black Canyon case, and the public at large by placing these long-standing water court proceedings on indefinite hold, while the federal court litigation proceeds to decide federal reserved right issues that should be before the water court.*” The obvious purpose of the motion was to get the case back into the Division 4 Water Court where it properly belongs. The Colorado Supreme Court has accepted the Motion and agreed to accept briefs and rule on this matter. To date, their ruling has not been issued. This presents an interesting predicament of simultaneous cases in State and Federal Court trying to decide the same matter. Stay tuned on this one.

RICD Filing By UGRWCD

On March 29, 2003, the Upper Gunnison River Water Conservancy District (UGRWCD) filed for a water right in Case 02CW038 for a Recreational In-Channel Diversion (RICD). This was the first RICD filing in Division 4, and our office filed a Statement of Opposition.

The application identified a series of in-channel structures on the Gunnison River, located just below Highway 50 west of Gunnison. Unlike some other applications that have claimed the highest flows for the entire year, the application suggested a varying schedule from 250 cfs to 1500 cfs for the period from May 1 to September 30.

In September of 2002, the CWCB board held the required hearing, and after considerable deliberation, recommended the flow rights should be decreed for only 250 cfs. The UGRWCD strongly objected and the trial was held on September 15–17, 2003. This office did not take part in the trial, except to watch on the first day. On December 26, 2003, Judge Patrick ruled in favor of the UGRWCD, granting the flow amounts as listed in the application. The CWCB has filed an appeal to the Colorado Supreme Court.



Gunnison RICD

Gunnison Basin-wide Augmentation Plan

For years it has been the desire of the UGRWCD and this office to have a basin-wide augmentation plan in the upper Gunnison Basin. The major benefit of the plan would be to provide a readily available source for replacement water, so that each user would not need to obtain a court decree and augmentation plan. It could serve the constituents of the basin, and reduce water court filings. On April 30, 2003, the UGRWCD filed case 03CW107.

Knowing this case would take some time to resolve, they simultaneously applied for a Substitute Water Supply Plan to provide an interim source of replacement until the court decree could be obtained. They contracted for 500 af of Blue Mesa Reservoir water from the USBR. There were many engineering issues to be worked out, since the basin was so widespread and the elevations for the points of use varied from 6500 to over 9000 feet. The UGRWCD Engineer, Jim Slattery, worked out tables of consumptive use and evaporation for various elevations and incorporated delayed effects for different distances from the stream. The goal in using the charts and tables was to provide a relatively easy and structured system for employees of the UGRWCD to calculate and assign replacement amounts to each contract. The UGRWCD also worked to provide satisfactory contract language for the USBR and this office.

Adjudicating The Subordination Contract

On December 2003, the UGRWCD filed case 03CW263 to finally adjudicate the Subordination Contract. The formal signing of the Contract was held on June 1, 2000. In the Contract was a provision and a commitment that the contract would be adjudicated at some point in the future. The Contract allowed for 60,000 af of future in-basin depletions against the priorities of the Aspinall Unit.

The attorney for the UGRWCD, John McClow, labored over the appropriate format to present the court, finally deciding that it would be best submitted as an augmentation plan, since that is essentially how the Contract functioned. The Contract stipulated that the UGRWCD would present an annual report to the USBR showing the recipients of the subordination benefit and the total amount they consume each year. This simplified the accounting and reporting process for the eventual court decree. There is likely to be a few Statements of Opposition, but this case should hopefully be settled in the near future.

GREATER EFFICIENCY IN DIVISION 4

We continue to use technology to improve both our efficiency and accuracy in everyday activities. As part of a pilot study, two of our Water Commissioners routinely use Personal Digital Assistants (PDAs) to input their diversion data out in the field. They have found this very helpful when compiling the annual diversion records at the end of the irrigation season. Other benefits of the PDAs are that they can store water rights tabulation data and can calculate submerged-flume and other commonly used formulas.

The combination of GPS technology and mapping software has been one of the most helpful tools for our field personnel. Division 4 adopted the National Geographic TOPO software as its mapping software standard. This package allows us to effectively create and manage waypoints, track ditches, and create both hardcopy and electronic maps for inclusion with our water court field inspections.



We purchased some upgraded GPS receivers in 2003. The Garmin GPSMAP 76 model has the capability to display a topographic map complete with contour lines and names of features. This has been valuable in double-checking waypoint data when out in the field. One can verify the accuracy of a waypoint by looking at a real-time location on the display.



A. TRANSMOUNTAIN DIVERSION SUMMARY--INFLOWS

| RECIPIENT | | | | | | | | SOURCE | | |
|-----------|------|------------------|-------------|---------------|------|------------|------|--------|------|----------|
| | | | | 10-YR AVERAGE | | CURRENT YR | | | | |
| WD | ID | NAME | STREAM | AF | DAYS | AF | DAYS | WD | ID | STREAM |
| 40 | 4520 | Leon Lake Tunnel | Surface Cr | 1,279 | 66 | 1,512 | 68 | 72 | 4520 | Leon Cr |
| 68 | 4658 | Carbon Lake D | Uncompahgre | 295 | 68 | ** 0 | 0 | 30 | 4665 | Animas R |
| 68 | 4659 | Mineral Pt D | Uncompahgre | 145 | 40 | ** 0 | 0 | 30 | 4661 | Animas R |
| 68 | 4660 | Red Mountain | Uncompahgre | 58 | 40 | ** 0 | 0 | 30 | 4662 | Animas R |

B. TRANSMOUNTAIN DIVERSION SUMMARY--OUTFLOWS

| | | | | | | | | | | |
|----|-----|-------------------|-------------|---------|------|---------|------|----|------|----------------|
| 11 | N/A | Larkspur D | Arkansas R | 80 | 59 | * 0 | 0 | 28 | 4655 | Tomichi Cr |
| 26 | N/A | Tarbell D | Saguache Cr | 594 | 76 | * 0 | 0 | 28 | 4656 | Cochetopa Cr |
| 20 | N/A | Tabor D | Clear Cr | 739 | 136 | 322 | 92 | 62 | 774 | Cebolla Cr |
| 45 | 577 | Divide C Highline | Divide Cr | 1,013 | 46 | 860 | 41 | 40 | 4657 | Cl Fk Muddy Cr |
| 72 | N/A | Grand Jct FL & WW | Colorado R | 3,006 | 351 | 6,118 | 365 | 42 | 4710 | Kannah Cr |
| 72 | N/A | Hallenbeck R #1 | Colorado R | 3,951 | 319 | 7,198 | 364 | 42 | 3618 | Kannah Cr |
| 72 | N/A | Redlands Can | Colorado R | 517,426 | 337 | 305,219 | 205 | 42 | 4713 | Gunnison |
| 72 | N/A | Fruita PI | Colorado R | **** | **** | **** | **** | 73 | 4712 | East Cr |

*No water available, ** Water available, none taken ****Water taken, no data available

RESERVOIR STORAGE SUMMARY
IRRIGATION YEAR – 2003
AMOUNT OF STORAGE

| WD | ID | RESERVOIR NAME | SOURCE STREAM | MINIMUM | | MAXIMUM | | END YR |
|----|------|----------------|----------------|---------|-----------|---------|------------|--------|
| | | | | AF | DATE | AF | DATE | |
| 28 | 3590 | Hot Springs R | Hot Springs Cr | 0 | 11/1/2002 | 603 | 5/1/2003 | 236.4 |
| 28 | 3591 | McDonough #1 | Los Pinos Cr | 0 | 11/1/2002 | 773.8 | 6/1/2003 | 167.4 |
| 28 | 3592 | McDonough #2 | Los Pinos Cr | 0 | 11/1/2002 | 78.9 | 10/31/2003 | 78.9 |
| 28 | 3593 | Needle Creek | Needle Cr | 71.4 | 11/1/2002 | 492.9 | 6/1/2003 | 363.4 |
| 28 | 3594 | Upper Dome R | Cochetopa Cr | 395.2 | 8/1/2003 | 492.32 | 5/1/2003 | 441.68 |
| 28 | 3595 | Vouga Res | Razor Cr | 565 | 11/1/2002 | 910 | 5/1/2003 | 810 |
| | | | | | | | | |
| 40 | 3412 | Ault Res | Muddy Cr | 0 | 11/1/2002 | 39 | 7/1/2003 | 0 |
| 40 | 3414 | East Beckwith | Anthracite | 0 | 11/1/2002 | 368 | 7/1/2003 | 0 |
| 40 | 3413 | Bruce Park Res | Hubbard Cr | 0 | 11/1/2002 | 556 | 6/1/2003 | 0 |
| 40 | 3399 | Overland Res 1 | Muddy Cr | 0 | 11/1/2002 | 6,200 | 6/1/2003 | 0 |
| 40 | 3416 | Paonia Res | Muddy Cr | 1,526 | 11/1/2002 | 16,461 | 7/1/2003 | 1,820 |
| 40 | 3417 | Spatafora Res | Muddy Cr | 0 | 11/1/2002 | 0 | 7/1/2003 | 0 |
| 40 | 3418 | Tomahawk Res | Muddy Cr | 0 | 11/1/2002 | 87.3 | 7/1/2003 | 0 |
| 40 | 3419 | Williams Cr R | Muddy Cr | 80 | 11/1/2002 | 100 | 6/1/2003 | 80 |
| 40 | 3391 | Bald Mt Res | Crystal Cr | 0 | 11/1/2002 | 120 | 7/30/2003 | 0 |

RESERVOIR STORAGE SUMMARY
IRRIGATION YEAR – 2003
AMOUNT OF STORAGE

| WD | ID | RESERVOIR NAME | SOURCE STREAM | MINIMUM | | MAXIMUM | | END YR |
|----|------|----------------|---------------|---------|-----------|---------|-----------|--------|
| | | | | AF | DATE | AF | DATE | |
| 40 | 3394 | Don Meek 1 | Crystal Cr | 0 | 11/1/2002 | 0 | 6/15/2003 | 0 |
| 40 | 3395 | Fruitland Res | Crystal Cr | 0 | 11/1/2002 | 5,290 | 5/31/2003 | 0 |
| 40 | 3392 | Bottle Stomp R | Iron Cr | 0 | 11/1/2002 | 17 | 8/1/2003 | 0 |
| 40 | 3553 | Crawford Res | Iron Cr | 2,353 | 11/1/2002 | 9,735 | 6/27/2003 | 1,396 |
| 40 | 3397 | Meek Res | Iron Cr | 0 | 11/1/2002 | 29.3 | 6/15/2003 | 0 |
| 40 | 3401 | Rockwell 1 R | Iron Cr | 25 | 11/1/2002 | 119 | 5/23/2003 | 64 |
| 40 | 3403 | Tyler Res | Iron Cr | 10 | 11/1/2002 | 169.3 | 6/16/2003 | 85 |
| 40 | 3400 | Poison Spr Res | Gunnison R | 70 | 11/1/2002 | 90 | 5/29/2003 | 35 |
| 40 | 3402 | Todd Res | McDonald Cr | 0 | 11/1/2002 | 0 | 9/4/2003 | 0 |
| 40 | 3420 | Bailey Res | Leroux Cr | 0 | 11/1/2002 | 423 | 4/25/2003 | 151 |
| 40 | 3421 | Brockman 1 R | Leroux Cr | 0 | 11/1/2002 | 16 | 4/25/2003 | 0 |
| 40 | 3422 | Brockman 2 R | Leroux Cr | 0 | 11/1/2002 | 41 | 4/25/2003 | 0 |
| 40 | 3423 | Carl Smith R | Leroux Cr | 657.94 | 11/1/2002 | 938 | 4/14/2003 | 569.43 |
| 40 | 3424 | Dog Fish Res | Leroux Cr | 0 | 11/1/2002 | 243 | 5/9/2003 | 0 |
| 40 | 3425 | Dowdy Res | Leroux Cr | 0 | 11/1/2002 | 264 | 4/25/2003 | 88 |
| 40 | 3426 | Ella Res | Leroux Cr | 0 | 11/1/2002 | 98 | 5/9/2003 | 0 |

RESERVOIR STORAGE SUMMARY
IRRIGATION YEAR – 2003
AMOUNT OF STORAGE

| WD | ID | RESERVOIR NAME | SOURCE STREAM | MINIMUM | | MAXIMUM | | END YR |
|----|------|----------------|---------------|---------|-----------|---------|-----------|--------|
| | | | | AF | DATE | AF | DATE | |
| 40 | 3427 | Elk Wallows R | Leroux Cr | 0 | 11/1/2002 | 218.00 | 5/9/2003 | 0 |
| 40 | 3428 | Ellington Cook | Leroux Cr | 0 | 11/1/2002 | 24.5 | 5/9/2003 | 0 |
| 40 | 3429 | Fairmont Park | Leroux Cr | 0 | 11/1/2002 | 30 | 5/9/2003 | 20 |
| 40 | 3430 | Fairmont Res | Leroux Cr | 0 | 11/1/2002 | 78 | 5/9/2003 | 0 |
| 40 | 3431 | Fisher Res | Leroux Cr | 0 | 11/1/2002 | 10 | 4/25/2003 | 0 |
| 40 | 3432 | Goodenough Res | Leroux Cr | 0 | 11/1/2002 | 405 | 5/25/2003 | 53 |
| 40 | 3433 | Gray Res | Leroux Cr | 0 | 11/1/2002 | 424 | 4/25/2003 | 56 |
| 40 | 3435 | Hanson 2 Res | Leroux Cr | 0 | 11/1/2002 | 225 | 5/9/2003 | 0 |
| 40 | 3437 | Hunt Res | Leroux Cr | 10 | 11/1/2002 | 124 | 6/16/2003 | 10 |
| 40 | 3438 | Lucky Find Res | Leroux Cr | 0 | 11/1/2002 | 66 | 4/25/2003 | 0 |
| 40 | 3439 | Miller Res | Leroux Cr | 0 | 11/1/2002 | 20.4 | 5/9/2003 | 0 |
| 40 | 3440 | Owens Res | Leroux Cr | 0 | 11/1/2002 | 92 | 4/25/2003 | 0 |
| 40 | 3441 | Patterson Res | Leroux Cr | 0 | 11/1/2002 | 78 | 5/2/2003 | 0 |
| 40 | 3442 | Patterson 2 R | Leroux Cr | 151 | 11/1/2002 | 151 | 5/2/2003 | 151 |
| 40 | 3443 | Pine Cone Res | Leroux Cr | 0 | 11/1/2002 | 37 | 5/9/2003 | 0 |
| 40 | 3444 | Reynolds Res | Leroux Cr | 0 | 11/1/2002 | 176 | 5/9/2003 | 0 |

RESERVOIR STORAGE SUMMARY
IRRIGATION YEAR – 2003
AMOUNT OF STORAGE

| WD | ID | RESERVOIR NAME | SOURCE STREAM | MINIMUM | | MAXIMUM | | END YR |
|----|------|----------------|----------------|---------|-----------|---------|-----------|--------|
| | | | | AF | DATE | AF | DATE | |
| 40 | 3446 | Skim Milk | Leroux Cr | 0 | 11/1/2002 | 90 | 4/25/2003 | 0 |
| 40 | 3447 | Wash Tub Res | Leroux Cr | 0 | 11/1/2002 | 33 | 4/25/2003 | 0 |
| 40 | 3448 | Water Bug R | Leroux Cr | 0 | 11/1/2002 | 40 | 4/25/2003 | 0 |
| 40 | 3449 | Willow Res | Leroux Cr | 0 | 11/1/2002 | 128 | 5/9/2003 | 0 |
| 40 | 3406 | Beaver Res | Minnesota Cr | 0 | 11/1/2002 | 1,527 | 5/28/2003 | 0 |
| 40 | 3407 | Lone Cabin R | Minnesota Cr | 0 | 11/1/2002 | 150 | 5/22/2003 | 0 |
| 40 | 3408 | Monument Res | Minnesota Cr | 0 | 11/1/2002 | 442 | 6/17/2003 | 0 |
| 40 | 3410 | Roeber 2 Res | Minnesota Cr | 0 | 11/1/2002 | 44 | 6/1/2003 | 0 |
| 40 | 3411 | West Res | Jay Cr | 0 | 11/1/2002 | 425 | 6/16/2003 | 0 |
| 40 | 3714 | Lucas Cline R | North Fork R | 0 | 11/1/2002 | 9.5 | 5/1/2003 | 0 |
| 40 | 3409 | Reynolds Res | Reynolds Cr | 7 | 11/1/2002 | 70 | 7/20/2003 | 10 |
| 40 | 3436 | Holy Terror R | Terror Cr | 0 | 11/1/2002 | 146 | 5/9/2003 | 0 |
| 40 | 3445 | Rex Res | Terror Cr | 0 | 11/1/2002 | 24 | 5/9/2003 | 0 |
| 40 | 3300 | Alexander Lake | Ward Creek | 0 | 11/1/2002 | 157 | 5/2/2003 | 0 |
| 40 | 3302 | Barren Lake | Kiser Cr | 0 | 11/1/2002 | 254.74 | 6/12/2003 | 0 |
| 40 | 3450 | Basin #1 | Dirty George C | 0 | 11/1/2002 | 148.72 | 6/3/2003 | 0 |

RESERVOIR STORAGE SUMMARY
IRRIGATION YEAR – 2003
AMOUNT OF STORAGE

| WD | ID | RESERVOIR NAME | SOURCE STREAM | MINIMUM | | MAXIMUM | | END YR |
|----|------|-----------------|----------------|---------|-----------|---------|-----------|--------|
| | | | | AF | DATE | AF | DATE | |
| 40 | 3451 | Basin #2 | Dirty George C | 0 | 11/1/2002 | 14.6 | 6/3/2003 | 0 |
| 40 | 3452 | Battlement 1 | Dirty George C | 0 | 11/1/2002 | 71.9 | 6/2/2003 | 0 |
| 40 | 3453 | Battlement 2 | Dirty George C | 0 | 11/1/2002 | 22 | 9/24/2003 | 22 |
| 40 | 3341 | Bonita | Surface Cr | 0 | 11/1/2002 | 222.62 | 7/1/2003 | 0 |
| 40 | 3304 | Bull Finch 1 | Kiser Cr | 0 | 11/1/2002 | 74.8 | 6/15/2003 | 0 |
| 40 | 3305 | Bull Finch 2 | Kiser Cr | 0 | 11/1/2002 | 38.3 | 6/15/2003 | 0 |
| 40 | 3303 | Boulder Lake 1 | Ward Cr | 0 | 11/1/2002 | 0 | 11/1/2002 | 0 |
| 40 | 3342 | Cabin Lake | Surface Cr | 0 | 11/1/2002 | 27.05 | 6/2/2003 | 0 |
| 40 | 3378 | Calumet | Surface Cr | 0 | 11/1/2002 | 16.84 | 6/2/2003 | 0 |
| 40 | 3366 | Carbonate Cmp 3 | Surface Cr | 0 | 11/1/2002 | 13 | 5/17/2003 | 0 |
| 40 | 3306 | Carbonate Cmp 6 | Youngs Cr | 0 | 11/1/2002 | 112.71 | 6/3/2003 | 0 |
| 40 | 3307 | Carbonate Cmp 7 | Youngs Cr | 0 | 11/1/2002 | 107.58 | 6/3/2003 | 0 |
| 40 | 3343 | Cedar Mesa | Surface Cr | 0 | 11/1/2002 | 918.95 | 7/1/2003 | 0 |
| 40 | 3379 | Cole 1 | Surface Cr | 0 | 11/1/2002 | 22.32 | 6/4/2003 | 0 |
| 40 | 3380 | Cole 2 | Surface Cr | 0 | 11/1/2002 | 34.18 | 6/3/2003 | 0 |
| 40 | 3381 | Cole 3 (Chy Ln) | Surface Cr | 0 | 11/1/2002 | 43.98 | 6/3/2003 | 0 |

RESERVOIR STORAGE SUMMARY
IRRIGATION YEAR – 2003
AMOUNT OF STORAGE

| WD | ID | RESERVOIR NAME | SOURCE STREAM | MINIMUM | | MAXIMUM | | END YR |
|----|------|----------------|---------------|---------|-----------|---------|-----------|--------|
| | | | | AF | DATE | AF | DATE | |
| 40 | 3344 | Cole 4 | Surface Cr | 0 | 11/1/2002 | 17.7 | 6/2/2003 | 0 |
| 40 | 3345 | Cole 5 | Surface Cr | 0 | 11/1/2002 | 116.23 | 5/4/2003 | 0 |
| 40 | 3308 | Daniels Sl | Kiser Cr | 23.25 | 11/1/2002 | 222.36 | 5/2/2003 | 87.89 |
| 40 | 3309 | Deep Slough | Ward Cr | 0 | 11/1/2002 | 448 | 7/1/2003 | 24.65 |
| 40 | 3310 | Deep Ward | Ward Cr | 0 | 11/1/2002 | 803 | 7/1/2003 | 250 |
| 40 | 3346 | Deserted Park | Surface Cr | 0 | 11/1/2002 | 35.89 | 6/4/2003 | 0 |
| 40 | 3311 | Donnelly Sl | Kiser Cr | 0 | 11/1/2002 | 236.65 | 6/12/2003 | 144 |
| 40 | 3382 | Doughty 1 | Surface Cr | 0 | 11/1/2002 | 25.17 | 6/3/2003 | 0 |
| 40 | 3383 | Doughty 2 | Surface Cr | 0 | 11/1/2002 | 17.66 | 6/4/2003 | 0 |
| 40 | 3347 | Dreyfus | Surface Cr | 0 | 11/1/2002 | 42.50 | 5/4/2003 | 0 |
| 40 | 3312 | Eggleston Lake | Kiser Cr | 0 | 11/1/2002 | 1,609 | 6/12/2003 | 0 |
| 40 | 3348 | Elk Park | Surface Cr | 0 | 11/1/2002 | 96.83 | 5/15/2003 | 96.83 |
| 40 | 3549 | Eureka 1 | Youngs Cr | 0 | 11/1/2002 | 27.1 | 5/19/2003 | 0 |
| 40 | 3349 | Eureka 2 | Youngs Cr | 0 | 11/1/2002 | 53.47 | 6/3/2003 | 0 |
| 40 | 3350 | Fish Lake | Surface Cr | 0 | 11/1/2002 | 76.93 | 6/3/2003 | 8.21 |
| 40 | 3313 | Forrest | Ward Cr | 0 | 11/1/2002 | 41.76 | 5/28/2003 | 0 |

RESERVOIR STORAGE SUMMARY
IRRIGATION YEAR – 2003
AMOUNT OF STORAGE

| WD | ID | RESERVOIR NAME | SOURCE STREAM | MINIMUM | | MAXIMUM | | END YR |
|----|------|----------------|----------------|---------|-----------|---------|-----------|--------|
| | | | | AF | DATE | AF | DATE | |
| 40 | 3314 | Goodenough | Kiser Cr | 0 | 11/1/2002 | 152 | 6/1/2003 | 15 |
| 40 | 3455 | Granby 6 | Dirty George C | 0 | 11/1/2002 | 45.98 | 6/2/2003 | 0 |
| 40 | 3456 | Granby 7 | Dirty George C | 29.99 | 11/1/2002 | 76.08 | 4/28/2003 | 45.64 |
| 40 | 3457 | Granby 8 | Dirty George C | 0 | 11/1/2002 | 0 | 11/1/2002 | 0 |
| 40 | 3458 | Granby 9 | Dirty George C | 0 | 11/1/2002 | 43.2 | 7/1/2003 | 0 |
| 40 | 3454 | Granby 5-11 | Dirty George C | 0 | 11/1/2002 | 348 | 7/1/2003 | 0 |
| 40 | 3459 | Granby 12 | Dirty George C | 63.6 | 11/1/2002 | 320.34 | 7/1/2003 | 86.38 |
| 40 | 3351 | Greenwood | Surface Cr | 0 | 11/1/2002 | 52.41 | 6/2/2003 | 0 |
| 40 | 3384 | Hale | Surface Cr | 0 | 11/1/2002 | 0 | 11/1/2002 | 0 |
| 40 | 3315 | Hotel Twin L | Ward Creek | 0 | 11/1/2002 | 0 | 11/1/2002 | 0 |
| 40 | 3316 | Howard | Kiser Cr | 0 | 11/1/2002 | 32.6 | 6/12/2003 | 26 |
| 40 | 3317 | Island Lake | Ward Cr | 76.48 | 11/1/2002 | 802 | 7/1/2003 | 355 |
| 40 | 3352 | Kehmeier | Surface Cr | 0 | 11/1/2002 | 298.89 | 6/2/2003 | 15.54 |
| 40 | 3319 | Kiser Slough | Surface Cr | 0 | 11/1/2002 | 512 | 6/1/2003 | 0 |
| 40 | 3318 | Kennicott Sl | Kiser Cr | 0 | 11/1/2002 | 213.56 | 6/12/2003 | 0 |
| 40 | 3353 | Knox | Surface Cr | 0 | 11/1/2002 | 219.4 | 6/3/2003 | 45.16 |

RESERVOIR STORAGE SUMMARY
IRRIGATION YEAR – 2003
AMOUNT OF STORAGE

| WD | ID | RESERVOIR NAME | SOURCE STREAM | MINIMUM | | MAXIMUM | | END YR |
|----|------|----------------|---------------|---------|------------|----------|-----------|--------|
| | | | | AF | DATE | AF | DATE | |
| 40 | 4520 | Leon Lake | Leon Cr | 0 | 11/1/2002 | 1,306.42 | 7/24/2003 | 0 |
| 40 | 3385 | Leon Park | Surface Cr | 0 | 11/1/2002 | 106.88 | 6/3/2003 | 0 |
| 40 | 3320 | Lilly Pad | Youngs Cr | 0 | 11/1/2002 | 28.84 | 6/1/2003 | 0 |
| 40 | 3386 | Little Giant 1 | Surface Cr | 0 | 11/1/2002 | 45.98 | 5/2/2003 | 0 |
| 40 | 3387 | Little Giant 2 | Surface Cr | 0 | 11/1/2002 | 0 | 11/1/2002 | 0 |
| 40 | 3322 | Little Grouse | Youngs Cr | 0 | 11/1/2002 | 52.5 | 6/1/2003 | 19 |
| 40 | 3321 | Little Gem | Ward Cr | 0 | 10/31/2003 | 219 | 6/1/2003 | 0 |
| 40 | 3388 | Marcott | Surface Cr | 0 | 11/1/2002 | 402.23 | 6/3/2003 | 0 |
| 40 | 3323 | McKoon | Youngs Cr | 0 | 11/1/2002 | 95.24 | 6/18/2003 | 0 |
| 40 | 3354 | Military | Surface Cr | 0 | 11/1/2002 | 236.6 | 6/2/2003 | 0 |
| 40 | 3355 | Park | Surface Cr | 922.74 | 11/1/2002 | 3,383 | 6/2/2003 | 1,268 |
| 40 | 3324 | P C & G 1 | Kiser Cr | 0 | 11/1/2002 | 22.89 | 6/12/2003 | 0 |
| 40 | 3325 | Pedro | Youngs Cr | 0 | 11/1/2002 | 114.46 | 6/5/2003 | 57.14 |
| 40 | 3326 | Pine | Youngs Cr | 0 | 11/1/2002 | 11.31 | 6/3/2003 | 0 |
| 40 | 3327 | Prebble | Youngs Cr | 50.47 | 11/1/2002 | 195.66 | 6/3/2003 | 157 |
| 40 | 3328 | Rim Rock Lake | Ward Cr | 0 | 10/31/2003 | 107.90 | 5/6/2003 | 0 |

RESERVOIR STORAGE SUMMARY
IRRIGATION YEAR – 2003
AMOUNT OF STORAGE

| WD | ID | RESERVOIR NAME | SOURCE STREAM | MINIMUM | | MAXIMUM | | END YR |
|----|------|----------------|---------------|---------|-----------|---------|-----------|--------|
| | | | | AF | DATE | AF | DATE | |
| 40 | 3329 | Rockland | Ward Cr | 0 | 11/1/2002 | 0 | 11/1/2002 | 0 |
| 40 | 3356 | Round Lake | Surface Cr | 0 | 11/1/2002 | 9 | 7/1/2003 | 0 |
| 40 | 3330 | Ryan | Youngs Cr | 0 | 11/1/2002 | 40.27 | 6/5/2003 | 0 |
| 40 | 3357 | Sackett | Surface Cr | 0 | 11/1/2002 | 108 | 6/26/2003 | 39.5 |
| 40 | 3331 | Safety 1 & 2 | Cottonwood Cr | 0 | 11/1/2002 | 12.75 | 6/1/2003 | 0 |
| 40 | 3332 | Scotland Peak | Ward Cr | 0 | 11/1/2002 | 43.12 | 6/1/2003 | 0 |
| 40 | 3333 | Sheep Lake | Ward Cr | 0 | 11/1/2002 | 154 | 6/4/2003 | 0 |
| 40 | 3358 | Stell | Surface Cr | 0 | 11/1/2002 | 52.65 | 6/4/2003 | 19.56 |
| 40 | 3389 | Trickle | Surface Cr | 0 | 11/1/2002 | 35.1 | 5/2/2003 | 0 |
| 40 | 3359 | Trio | Surface Cr | 0 | 11/1/2002 | 164.3 | 6/2/2003 | 42.4 |
| 40 | 3360 | Twin Lake 1 | Surface Cr | 0 | 11/1/2002 | 32.93 | 6/4/2003 | 0 |
| 40 | 3361 | Twin Lake 2 | Surface Cr | 0 | 11/1/2002 | 78.98 | 7/1/2003 | 32.24 |
| 40 | 3334 | Upper Hotel L | Ward Cr | 0 | 11/1/2002 | 54.71 | 7/1/2003 | 47.33 |
| 40 | 3362 | Vela | Surface Cr | 31.91 | 11/1/2002 | 436.66 | 7/1/2003 | 98 |
| 40 | 3335 | Ward Cr | Ward Cr | 37.09 | 11/1/2002 | 261.61 | 5/2/2003 | 58 |
| 40 | 3363 | Weir/Johnson 2 | Surface Cr | 61.87 | 11/1/2002 | 415.75 | 7/1/2003 | 176.49 |

RESERVOIR STORAGE SUMMARY
IRRIGATION YEAR – 2003
AMOUNT OF STORAGE

| WD | ID | RESERVOIR NAME | SOURCE STREAM | MINIMUM | | MAXIMUM | | END YR |
|----|------|----------------|---------------|---------|-----------|----------|-----------|--------|
| | | | | AF | DATE | AF | DATE | |
| 40 | 3364 | Weir Park | Surface Cr | 0 | 11/1/2002 | 40.73 | 6/2/2003 | 0 |
| 40 | 3336 | Womack 1 | Ward Cr | 0 | 11/1/2002 | 202.4 | 6/1/2003 | 0 |
| 40 | 3337 | Womack 2 & 3 | Cottonwood Cr | 0 | 11/1/2002 | 101.51 | 6/1/2003 | 6 |
| 40 | 3340 | Womack 5 | Cottonwood Cr | 0 | 11/1/2002 | 7.66 | 6/3/2003 | 0 |
| 40 | 3338 | Young Cr 1 & 2 | Youngs Cr | 35.6 | 11/1/2002 | 348.23 | 6/5/2003 | 60.02 |
| 40 | 3339 | Youngs Cr 3 | Youngs Cr | 0 | 11/1/2002 | 200.62 | 6/5/2003 | 6.12 |
| 40 | 3390 | Y & S | Surface Cr | 0 | 11/1/2002 | 120.19 | 7/1/2003 | 48.87 |
| 40 | 3365 | Fruitgrowers | Alfalfa Run | 0 | 11/1/2002 | 4,522.95 | 6/1/2003 | 283 |
| 40 | 3368 | Beaver Dam | Escalante Cr | 0 | 11/1/2002 | 396.5 | 5/22/2003 | 0 |
| 40 | 3370 | Clark Res | Oak Cr | 0 | 11/1/2002 | 40.9 | 5/21/2003 | 0 |
| 40 | 3373 | Dugger Res | Oak Cr | 69.56 | 11/1/2002 | 203.6 | 8/5/2003 | 195 |
| 40 | 3374 | Morris 2 | Oak Cr | 12.52 | 11/1/2002 | 16.33 | 5/21/2003 | 16.33 |
| 40 | 3375 | Pitcarin Res | Doughspoon Cr | 29 | 8/5/2003 | 47.12 | 5/21/2003 | 29 |
| 40 | 3376 | Porter 1 | Oak Cr | 47.44 | 10/9/2003 | 201.76 | 5/21/2003 | 47.44 |
| 40 | 3377 | Porter 4 | Oak Cr | 38 | 11/1/2002 | 38 | 11/1/2002 | 38 |
| 40 | 3301 | Arch Slough | Ward Cr | 0 | 11/1/2002 | 32.97 | 6/1/2003 | 0 |

RESERVOIR STORAGE SUMMARY
IRRIGATION YEAR – 2003
AMOUNT OF STORAGE

| WD | ID | RESERVOIR NAME | SOURCE STREAM | MINIMUM | | MAXIMUM | | END YR |
|----|------|-----------------|---------------|---------|------------|---------|-----------|--------|
| | | | | AF | DATE | AF | DATE | |
| 40 | 3466 | Upper Eggleston | Kiser Cr | 264 | 10/31/2003 | 292 | 11/1/2002 | 264 |
| | | | | | | | | |
| 42 | 3600 | Anderson R 1 | Kannah Cr | 161 | 10/31/2003 | 595 | 5/31/2003 | 161 |
| 42 | 3601 | Anderson R 2 | Kannah Cr | 0 | 10/31/2003 | 521 | 6/30/2003 | 0 |
| 42 | 3630 | Anderson R 6 | Kannah Cr | 0 | 10/31/2003 | 118 | 5/31/2003 | 0 |
| 42 | 3602 | Bolen AJ R | Kannah Cr | 0 | 10/31/2003 | 240 | 6/30/2003 | 0 |
| 42 | 3603 | Bolen Res | Kannah Cr | 101 | 10/31/2003 | 499 | 6/30/2003 | 101 |
| 42 | 3604 | Carson Lake | Kannah Cr | 653 | 10/31/2003 | 653 | 5/31/2003 | 653 |
| 42 | 3606 | Deep Cr R 2 | Kannah Cr | 0 | 10/31/2003 | 354 | 5/31/2003 | 0 |
| 42 | 3607 | Dry Cr R Sup | Kannah Cr | 0 | 10/31/2003 | 294 | 5/31/2003 | 0 |
| 42 | 3608 | Flowing Pk R | Kannah Cr | 341 | 10/31/2003 | 735 | 5/31/2003 | 341 |
| 42 | 3609 | Fruita Res 1 | East Cr | 12.1 | 11/1/2002 | 24.01 | 5/31/2003 | 9.53 |
| 42 | 3610 | Fruita Res 2 | East Cr | 27.45 | 11/1/2002 | 119 | 5/31/2003 | 57.69 |
| 42 | 3614 | Grand Mesa R 1 | Kannah Cr | 0 | 10/31/2003 | 451 | 5/31/2003 | 0 |
| 42 | 3615 | Grand Mesa R 6 | Kannah Cr | 19 | 10/31/2003 | 172 | 5/31/2003 | 19 |

RESERVOIR STORAGE SUMMARY
IRRIGATION YEAR – 2003
AMOUNT OF STORAGE

| WD | ID | RESERVOIR NAME | SOURCE STREAM | MINIMUM | | MAXIMUM | | END YR |
|----|------|----------------|---------------|---------|------------|---------|-----------|--------|
| | | | | AF | DATE | AF | DATE | |
| 42 | 3616 | Grand Mesa R 8 | Kannah Cr | 0 | 10/31/2003 | 379 | 6/30/2003 | 0 |
| 42 | 3617 | Grand Mesa R 9 | Kannah Cr | 0 | 10/31/2003 | 153 | 5/31/2003 | 0 |
| 42 | 3618 | Hallenbeck R 1 | Kannah Cr | 447 | 11/30/2002 | 679 | 6/30/2003 | 488 |
| 42 | 3619 | Hallenbeck R 2 | Kannah Cr | 71 | 10/31/2003 | 459 | 6/30/2003 | 71 |
| 42 | 3620 | Juniata Res | Kannah Cr | 4,078 | 11/1/2002 | 6,868 | 5/31/2003 | 4617 |
| 42 | 3623 | Scales Res 1 | Kannah CR | 0 | 10/31/2003 | 203 | 5/31/2003 | 0 |
| 42 | 3624 | Scales Res 3 | Kannah Cr | 0 | 10/31/2003 | 129 | 5/31/2003 | 0 |
| 42 | 3625 | Somerville R 1 | Whitewater Cr | 36 | 10/31/2003 | 973 | 5/31/2003 | 36 |
| | | | | | | | | |
| 59 | 3665 | Spring Creek | Taylor River | 950 | 10/27/2003 | 1,458 | 6/11/2003 | 950 |
| 59 | 3666 | Taylor Park | Taylor River | 39,049 | 4/12/2003 | 81,026 | 6/29/2003 | 69,448 |
| 59 | 3684 | Lake Grant | Slate River | 195 | 10/28/2003 | 282 | 4/30/2003 | 195 |
| 59 | 2689 | Meridian Lk Pk | Slate River | 123 | 10/29/2003 | 123 | 4/22/2003 | 123 |
| | | | | | | | | |
| 60 | 3507 | Gurley R | Beaver Cr | 2,423 | 4/12/2003 | 9,376 | 6/4/2003 | 3,429 |

RESERVOIR STORAGE SUMMARY
IRRIGATION YEAR – 2003
AMOUNT OF STORAGE

| WD | ID | RESERVOIR NAME | SOURCE STREAM | MINIMUM | | MAXIMUM | | END YR |
|----|------|----------------|---------------|---------|------------|---------|-----------|---------|
| | | | | AF | DATE | AF | DATE | |
| 60 | 3511 | Lone Cone R | Bennett Cr | 0 | 6/24/2003 | 1,840 | 5/3/2003 | 0 |
| 60 | 3510 | Lilylands | Naturita Cr | 41 | 4/3/2003 | 361 | 4/28/2003 | 47 |
| 60 | 3512 | Miramonte | W Naturita Cr | 7,698 | 4/3/2003 | 7,698 | 5/6/2003 | 7,698 |
| 60 | 3527 | Trout Lake Res | Lake Fork | 1,337 | 3/13/2003 | 3,300 | 9/25/2003 | 2,550 |
| | | | | | | | | |
| 61 | 3551 | Buckeye R | Buckeye Cr. | 0 | 11/1/2002 | 2,158 | 6/16/2003 | 411 |
| | | | | | | | | |
| 62 | 3552 | Blue Mesa | Gunnison R | 266,780 | 11/01/2002 | 514,444 | 6/25/2003 | 363,397 |
| 62 | 3578 | Crystal | Gunnison R | 13,008 | 2/5/2003 | 17,344 | 5/30/2003 | 15,222 |
| 62 | 3545 | Morrow Pt | Gunnison R | 107,988 | 3/31/2003 | 116,106 | 7/11/2003 | 109,422 |
| 62 | 3548 | Silverjack | Big Cimarron | 1,202 | 11/01/2002 | 13,333 | 5/29/2003 | 5,390 |
| | | | | | | | | |
| 63 | 3640 | Craig Res 2 | West Cr | 63.46 | 11/01/2002 | 544 | 5/31/2003 | 51.21 |
| 63 | 3641 | Burg Res | West Cr | 0.00 | 11/01/2002 | 63.04 | 5/1/2003 | 0.00 |
| 63 | 3642 | Casement Res | West Cr | 6.15 | 11/01/2002 | 27.1 | 5/31/2003 | 7.80 |
| 63 | 3643 | Casto Res | West Cr | 10.75 | 11/01/2002 | 135.88 | 5/1/2003 | 101.75 |

RESERVOIR STORAGE SUMMARY
IRRIGATION YEAR – 2003
AMOUNT OF STORAGE

| <u>WD</u> | <u>ID</u> | <u>RESERVOIR NAME</u> | <u>SOURCE STREAM</u> | <u>MINIMUM AF</u> | <u>DATE</u> | <u>MAXIMUM AF</u> | <u>DATE</u> | <u>END YR</u> |
|-----------|-----------|-----------------------|----------------------|-----------------------|-------------|-----------------------|-------------|---------------|
| 63 | 3644 | Craig Res 1 | West Cr | 0.00 | 11/01/2002 | 0.00 | 5/31/2003 | 0.00 |
| | | | | | | | | |
| 68 | 3675 | Ridgway | Uncompahgre R | 56,415 | 11/01/2002 | 84,815 | 05/31/2003 | 68,113 |
| | | | | | | | | |
| 73 | 3612 | Duval Res | Chiquito Dol. | 0.00 | 11/01/2002 | 102.4 | 5/30/2003 | 0.00 |
| 73 | 3621 | Fruita Res 3 | Chiquito Dol. | 12.4 | 11/01/2002 | 50 | 5/31/2003 | 12.56 |

WATER DIVERSION SUMMARIES

| WD | STRUCTURES REPORTING | | | | | ALL STRUCTURES | | | TO IRRIGATION | | |
|-----|----------------------|---------------------|--------------------|--------------------|---------------|-----------------------------|----------------------|---------------------------------|----------------------|---------------------------|---------------------|
| | With Record (1) | No Water Avail. (2) | No Water Taken (3) | No Info Avail. (4) | No Record (5) | Estimate # Visits Structure | Total Diversions, AF | Total Diversions to Storage, AF | Total Diversions, AF | Number of Acres Irrigated | Average AF Per Acre |
| 28 | 243 | 43 | 52 | 24 | 625 | 1,849 | 151,487 | 2,919 | 149,922 | 30,719 | 4.88 |
| 40 | 1,153 | 36 | 261 | 353 | 1,952 | 15,204 | 597,256 | 75,843 | 442,494 | 109,005 | 4.05 |
| 41 | 52 | 2 | 11 | 80 | 669 | 3,282 | 873,340 | 7,130 | 616,276 | 71,294 | 8.64 |
| 42 | 77 | 12 | 30 | 214 | 292 | 1,648 | 351,995 | 13,552 | 19,711 | 5,517 | 3.57 |
| 59 | 230 | 2 | 19 | 160 | 1,507 | 2,944 | 470,329 | 90,877 | 280,934 | 33,317 | 8.43 |
| 60 | 121 | 45 | 146 | 143 | 1,413 | 529 | 112,745 | 12,939 | 74,850 | 30,774 | 2.43 |
| 61 | 34 | 3 | 15 | 33 | 54 | 2,470 | 17,789 | 4,645 | 9,145 | 3,383 | 2.70 |
| 62 | 211 | 16 | 64 | 68 | 1,298 | 5,307 | 2,944,859 | 801,132 | 123,010 | 12,984 | 9.47 |
| 63 | 60 | 15 | 31 | 122 | 183 | 1,458 | 30,171 | 653 | 14,645 | 2,590 | 5.65 |
| 68 | 178 | 8 | 40 | 72 | 861 | 3,728 | 134,237 | 35,633 | 88,194 | 15,808 | 5.57 |
| 73 | 23 | 14 | 17 | 96 | 114 | 245 | 3,492 | 148 | 3,228 | 3,048 | 1.10 |
| TOT | 2,382 | 196 | 686 | 1,365 | 8,968 | 38,664 | 5,687,700 | 1,035,422 | 1,822,409 | 318,439 | 5.72 |

Definitions: (1) Count of structures with CIU=A and NUC=blank (2) Count of structures with CIU=A and NUC=B
(3) Count of structures with CIU=A and NUC=(A,C,D) (4) Count of structures with CIU=A and NUC=(E,F)
(5) Count of structures with CIU=U

WATER DIVERSION SUMMARIES TO VARIOUS USES

| WD | TRANS MOUNTAIN OUTFLOW | TRANS-BASIN OUTFLOW | MUNICIPAL | COMMERCIAL | INDUSTRIAL | RECREATION | FISHERY | DOMESTIC/ HOUSE HOLD | STOCK |
|-----|------------------------|---------------------|-----------|------------|------------|------------|---------|----------------------|--------|
| 28 | 0 | 0 | 0 | 0 | 0 | 0 | 1,233 | 0 | 0 |
| 40 | 1,352 | 860 | 5,677 | 0 | 911 | 0 | 9,455 | 1,111 | 7,001 |
| 41 | 0 | 0 | 8,082 | 0 | 0 | 0 | 5,948 | 0 | 1,574 |
| 42 | 313,446 | 0 | 1 | 0 | 690 | 0 | 0 | 37 | 73 |
| 59 | 0 | 0 | 2,039 | 0 | 0 | 2,507 | 87,240 | 0 | 0 |
| 60 | 0 | 0 | 1,521 | 0 | 1,876 | 0 | 0 | 721 | 17 |
| 61 | 0 | 0 | 44 | 0 | 0 | 0 | 0 | 0 | 814 |
| 62 | 322 | 350,091 | 603 | 0 | 0 | 0 | 7,036 | 6 | 27 |
| 63 | 0 | 0 | 0 | 0 | 0 | 0 | 0 | 0 | 14,745 |
| 68 | 0 | 3,818 | 1,200 | 0 | 0 | 40 | 299 | 186 | 5,618 |
| 73 | 0 | 0 | 0 | 0 | 0 | 0 | 0 | 0 | 10 |
| TOT | 315,120 | 354,769 | 19,167 | 0 | 3,477 | 2,547 | 111,211 | 2,061 | 29,879 |

WATER DIVERSION SUMMARIES TO VARIOUS USES, continued

| WD | AUGMEN- TATION | EVAPO- RATION | GEO- THERMAL | SNOW MAKING | MIN STREAM FLOW | POWER GENERATION | WILDLIFE | RECHARGES | OTHER |
|-----|-------------------|------------------|-----------------|----------------|-----------------------|---------------------|----------|-----------|---------|
| 28 | 0 | 0 | 0 | 0 | 0 | 0 | 0 | 0 | 0 |
| 40 | 15 | 3,871 | 0 | 0 | 0 | 0 | 0 | 0 | 1,063 |
| 41 | 0 | 0 | 0 | 0 | 0 | 0 | 0 | 0 | 241,460 |
| 42 | 0 | 21 | 0 | 0 | 0 | 0 | 0 | 0 | 0 |
| 59 | 0 | 5,379 | 0 | 175 | 0 | 0 | 0 | 0 | 0 |
| 60 | 0 | 0 | 0 | 0 | 0 | 20,821 | 0 | 0 | 0 |
| 61 | 0 | 0 | 0 | 0 | 0 | 0 | 0 | 0 | 2,825 |
| 62 | 15 | 47,051 | 0 | 0 | 0 | 1,615,293 | 0 | 0 | 0 |
| 63 | 0 | 49 | 0 | 0 | 0 | 26 | 0 | 0 | 0 |
| 68 | 112 | 2,955 | 0 | 0 | 0 | 0 | 0 | 0 | 0 |
| 73 | 0 | 15 | 0 | 0 | 0 | 0 | 0 | 0 | 0 |
| TOT | 142 | 59,341 | 0 | 175 | 0 | 1,636,140 | 0 | 0 | 245,348 |

2003
Water Court Activities

| | | |
|--|-------------------|--------------|
| Applications for Decrees | | 288 |
| Consultations with Referee | | 347 |
| Decrees Issued by Water Court | | 310 |
| Dismissals | | 14 |
| Complaints | | 0 |
| | <u>Structures</u> | <u>Cases</u> |
| New Conditional Water Rights | | 73 |
| Diligence on Conditional Rights | | 52 |
| Cancellations of Conditional Rights | | 23 |
| Conditional Rights Made Absolute | | 28 |
| Underground Water Rights Adjudicated | 48 | 20 |
| Surface Water Rights Adjudicated | 430 | 243 |
| Water Storage Rights Adjudicated | 139 | 83 |
| Plans for Augmentation Adjudicated | | 12 |
| Change of Water Rights / Location | | 31 |
| Change of Water Rights / Use Adjudicated | | 13 |
| In-stream Flow Rights Adjudicated | | 15 |

**APPENDIX E
DIVISION IV
2003 RIVER CALLS**

| Stream Affected | Name of Calling Structure | Admin # of Calling Structure | Date of Call | Duration of Call | Person Placing Call | Most Senior Curtailed Structure | Admin # of the Most Senior Curtailed Struct. |
|---------------------------------|---------------------------|------------------------------|--------------|------------------|---------------------|---------------------------------|--|
| <i>Water District 28</i> | | | | | | | |
| All in WD28 | Gunnison Tunnel | 20393.18779 | 7/15/2003 | 9//8/2003 | Marc Catlin | Government D. | 28311.09122 |
| Razor Creek | Kennedy #1 Ditch | 10301.00000 | 6/27/2003 | 9/15/2003 | Greg Peterson | Snyder Ditches Nos 1 & 2 | 11109.00000 |
| Razor Creek | Kennedy #2 Ditch | 10301.00000 | 6/27/2003 | 9/15/2003 | Greg Peterson | Snyder Ditches Nos 1 & 2 | 11109.00000 |
| Razor Creek | Razor Creek Ditch | 10737.00000 | 6/27/2003 | 9/15/2003 | Greg Peterson | Snyder Ditches Nos 1 & 2 | 11109.00000 |
| Razor Creek | Hirdman #1 Ditch | 10743.00000 | 6/27/2003 | 9/15/2003 | Greg Peterson | Snyder Ditches Nos 1 & 2 | 11109.00000 |
| Razor Creek | Hirdman #2 Ditch | 10737.00000 | 6/27/2003 | 9/15/2003 | Greg Peterson | Snyder Ditches Nos 1 & 2 | 11109.00000 |
| Razor Creek | Hirdman #3 Ditch | 10743.00000 | 6/27/2003 | 9/15/2003 | Greg Peterson | Snyder Ditches Nos 1 & 2 | 11109.00000 |
| Cochetopa Creek | Smith Ford No. 2 Ditch | 16192.11109 | 7/11/2003 | 8/20/2003 | Wade Collins | WL Perry No. 6 Ditch | 16192.14032 |
| Cochetopa Creek | Miller Crary Ditch | 16192.12935 | 7/11/2003 | 8/20/2003 | Wade Collins | WL Perry No. 6 Ditch | 16192.14032 |
| Cochetopa Creek | Duckett Ditch | 16192.13666 | 7/11/2003 | 8/20/2003 | Wade Collins | WL Perry No. 6 Ditch | 16192.14032 |
| Cochetopa Creek | Smith Ford No. 1 Ditch | 16192.11109 | 7/11/2003 | 8/20/2003 | Wade Collins | WL Perry No. 6 Ditch | 16192.14032 |
| Cochetopa Creek | Henry Roberts No 1 Ditch | 16192.15462 | 7/11/2003 | 8/20/2003 | Wade Collins | WL Perry No. 6 Ditch | 16192.14032 |
| Cochetopa Creek | Henry Roberts No 2 Ditch | 16192.15464 | 7/11/2003 | 8/20/2003 | Wade Collins | WL Perry No. 6 Ditch | 16192.14032 |
| Cochetopa Creek | Roberts Ditch | 17698.00000 | 7/11/2003 | 8/20/2003 | Wade Collins | WL Perry No. 6 Ditch | 16192.14032 |
| <i>Water District 40</i> | | | | | | | |
| Youngs Creek | Cherokee Ditch | 25807.21092 | 4/1/2003 | 6/2/2003 | Wright | Texas Ditch | 29260.22005 |
| Youngs Creek | Carbonate Camp | 25807.14975 | 4/1/2003 | 6/2/2003 | | Cherokee Ditch | 25807.21092 |
| Youngs Creek | Childs Ditch | 25807.14427 | 4/1/2003 | 6/9/2003 | Fogg | Carbonate Camp | 25807.14975 |
| Youngs Creek | Childs Ditch | 25807.14414 | 4/1/2003 | 6/13/2003 | Fogg | Childs Ditch | 25807.14427 |

**APPENDIX E
DIVISION IV
2003 RIVER CALLS**

| Stream Affected | Name of Calling Structure | Admin # of Calling Structure | Date of Call | Duration of Call | Person Placing Call | Most Senior Curtailed Structure | Admin # of the Most Senior Curtailed Struct. |
|---------------------|---------------------------|------------------------------|--------------|------------------|---------------------|---|--|
| Youngs Creek | Red Bluff Ditch | 25807.11414 | 4/1/2003 | 6/13/2003 | Haddan | Childs Ditch | 25807.14427 |
| Youngs Creek | Lookout Ditch | 20501.17636 | 4/1/2003 | 6/15/2003 | Morris | Childs Red Bluff | 25807.14414 |
| Youngs Creek | Cherokee Ditch | 20501.16893 | 4/15/2003 | 6/15/2003 | Reed | Lookout Ditch | 20501.17636 |
| Youngs Creek | Childs Ditch | 20501.14854 | 4/21/2003 | 7/14/2003 | Fogg | Cherokee Ditch | 20501.16893 |
| Youngs Creek | Santa Fe Ditch | 20501.14413 | 4/22/2003 | 6/23/2003 | Betz | Childs Ditch | 20501.14854 |
| Youngs Creek | Santa Fe Ditch | 13877.00000 | 4/22/2003 | 6/23/2003 | Betz | Childs Ditch | 20501.14854 |
| Youngs Creek | Red Bluff Ditch | 13398.00000 | 4/21/2003 | Season | Haddan | Full | |
| Youngs Creek | Broncho Ditch | 13254.00000 | 4/21/2003 | 7/14/2003 | Frost | Childs Ditch | 20501.14854 |
| Youngs Creek | Childs Ditch | 13141.00000 | 4/21/2003 | Season | Fogg | Broncho Ditch | 13254.00000 |
| Happy Hollow | Lingren-Pickett Ditch | 20501.15035 | 3/18/2003 | 3/20/2003 | Hills | | Futile Call |
| Happy Hollow | Pumpkin Swag Ditch | 20501.16932 | 5/1/2003 | 6/22/2003 | Carlson | Lucky Ditch | 20501.17258 |
| Happy Hollow | Cartwright Ditch | 20501.15675 | 5/1/2003 | Season | Hillis | Happy Hollow Ditch | 20501.16181 |
| Happy Hollow | Daisy Ditch | 20501.15035 | 5/2/2003 | Season | Sodowsky | Hamilton Seep | 20501.15035 |
| Red Bluff Draw | Right Hand Ditch | 20501.16315 | 4/5/2003 | Season | | Slaughter Ditch Childs Run Ditch Dillon Ditch | 24894.12934 24894.13635 24894.21275 |
| Kiser Creek | Lakefork Ditch | 13356.00000 | 4/21/2003 | Season | Morris | Kiser Ditch | 13377.00000 |
| Kiser Creek | Roseberry Ditch | 20501.13301 | 6/9/2003 | 6/27/2003 | Fogg | Kiser Ditch | 20501.14413 |
| Terror Creek | Terror Ditch | 12370.00000 | 6/24/2003 | 10/30/2003 | Richard Rudin | Overland Ditch | 25301.00000 |
| N. Fork of Gunnison | Fire Mt. Canal | 19415.17059 | 9/3/2003 | 9/3/2003 | Merritt Denison | Deep Creek Ditch | 19415.17701 |
| N. Fork of Gunnison | Short Ditch | 14567.00000 | 8/30/2003 | 10/30/2003 | Tom Curry | Stewart Ditch | 15702.00000 |
| Clear Fork | Ditch #3 | 21263.17335 | 7/20/2003 | 10/20/2003 | Larry McIntyre | Divide Creek Feeder | 23927.00000 |
| Dirty George Creek | West Ditch | 12407.00000 | 4/4/2003 | Season | Hugh Sanburg | Cedar Park Ditch | 13566.00000 |
| Dirty George Creek | West Ditch | 20501.14413 | 4/4/2003 | Season | Hugh Sanburg | Gallagher Ditch | 20501.13209 |
| Ward Creek | Gard Ditch | 12844.00000 | 4/4/2003 | Season | Hugh Sanburg | Lake Fork Ditch | 13356.00000 |
| Dirty George Creek | Cedar Park Ditch | 13566.00000 | 4/4/2003 | Season | Hugh Sanburg | Granby Ditch | 10501.16192 |
| Dirty George Creek | Cedar Park Ditch | 20501.14413 | 4/4/2003 | Season | Hugh Sanburg | Granby Ditch | 10501.16192 |

**APPENDIX E
DIVISION IV
2003 RIVER CALLS**

| Stream Affected | Name of Calling Structure | Admin # of Calling Structure | Date of Call | Duration of Call | Person Placing Call | Most Senior Curtailed Structure | Admin # of the Most Senior Curtailed Struct. |
|--------------------|---------------------------|------------------------------|--------------|------------------|---------------------|---------------------------------|--|
| Dirty George Creek | Blake Ditch | 20501.13605 | 4/4/2003 | Season | Nate Hawkins | Cedar Park Ditch | 20501.14413 |
| Happy Hollow Creek | Happy Hollow Ditch | 20501.16181 | 4/4/2003 | Season | John Alward | Right Hand Ditch | 20501.16315 |
| Happy Hollow Creek | Lucky Ditch | 20501.13240 | 4/5/2003 | Season | Darrell Geyer | Happy Hollow Ditch | 20501.16181 |
| Hamilton Draw | Hixon No. 1 Ditch | 21263.13028 | 4/5/2003 | Season | Darrell Geyer | McMurry Ditch | 21263.16679 |
| Hamilton Draw | Hixon No 2 Ditch | 20501.17258 | 4/5/2003 | Season | Darrell Geyer | McMurry Ditch | 21263.16679 |
| Forked Tongue Cr. | Perkins Ditch | 13395.00000 | 4/5/2003 | Season | Darrell Geyer | Sandstone Bluff Ditch | 13437.00000 |
| Forked Tongue Cr. | Kennicott Mower | 13381.00000 | 4/8/2003 | Season | Brian Niblack | Sandstone Bluff Ditch | 13437.00000 |
| Forked Tongue Cr. | Forked Tongue Ditch | 13399.00000 | 4/8/2003 | Season | Joe Segrest | Sandstone Bluff Ditch | 13437.00000 |
| Ward Creek | Granby Rowell Ditch | 20501.16192 | 4/11/2003 | Season | Paul Thompson | Todd Ditch | 20501.18018 |
| Ward Creek | Sandstone Bluff Ditch | 13437.00000 | 4/21/2003 | Season | Steve Kelleher | Lake Fork Ditch | 13356.00000 |
| Sand Creek | Sand Creek Ditch | 20501.14737 | 4/21/2003 | Season | Steve Kelleher | Granby Ditch | 31924.15950 |
| Dirty George Creek | Granby Ditch | 20501.16192 | 4/21/2003 | Season | Steve Kelleher | Battlement Res. #2 | 20501.16329 |
| Happy Hollow Ditch | H.J. Neighbors | 21263.15308 | 5/1/2003 | Season | Joe Carlson | Daisy Ditch | 24894.15811 |
| Ward Creek | Williams No. 2 Ditch | 20501.12540 | 6/9/2003 | Season | Sally Clay | Surface Creek Ditch | 20501.13372 |
| Ward Creek | Carbon Ditch | 13685.00000 | 6/9/2003 | Season | Deb Baile | Williams No. 2 Ditch | 20501.12540 |
| Smith Fork | Crawford Clipper Ditch | 19413.18353 | 6/10/2003 | 10/31/2003 | Bill Linman | Saddle Mt. Highline | 21263.18788 |
| Smith Fork | Crawford Clipper Ditch | 19413.17258 | 6/23/2003 | 10/31/2003 | Bill Linman | Needle Rock Ditch | 19413.17258 |
| Smith Fork | Crawford Clipper Ditch | 19413.15432 | 6/27/2003 | 10/31/2003 | Bill Linman | Needle Rock Ditch | 19413.13990 |
| Smith Fork | Crawford Clipper Ditch | 19413.12519 | 7/1/2003 | 10/31/2003 | Bill Linman | Needle Rock Ditch | 19413.13990 |
| Crystal Creek | Cedar Canon Iron Sp. | 12350.00000 | 6/24/2003 | 10/31/2003 | Leroy McLaughlin | Dyer Fk. | 21263.18762 |
| Crystal Creek | Cedar Canyon Iron Sp. | 12350.00000 | 6/24/2003 | 10/31/2003 | Leroy McLaughlin | Crystal Valley | 21263.14010 |
| McNeil Creek | McNeil Ditch | 11779.00000 | 6/1/2003 | 10/31/2003 | Koehler Robert | Undecreed springs upstream | |
| Muddy Creek | McMillan Ditch | 29260.26043 | 9/1/2003 | 10/31/2003 | Bob Haveisen | Pipher Sp. No. 2 | 52960.52837 |
| Leroux Creek | Duke Ditch | 50769.15584 | 4/29/2003 | 6/7/2003 | John Hotchkiss | Jessie Ditch | 51499.12276 |
| Leroux Creek | Stull Creek | 21089.15502 | 6/12/2003 | 10/31/2003 | David Sievers | Overland Ditch | 21089.15919 |
| Leroux Creek | Currant Creek | 21089.14413 | 6/24/2003 | Season | Roy Wolf | Stull Ditch | 21089.15502 |
| Leroux Creek | Cow Creek | 14413.12925 | 6/25/2003 | Season | 7X Ranch | Currant Creek Ditch | 21089.14413 |

**APPENDIX E
DIVISION IV
2003 RIVER CALLS**

| Stream Affected | Name of Calling Structure | Admin # of Calling Structure | Date of Call | Duration of Call | Person Placing Call | Most Senior Curtailed Structure | Admin # of the Most Senior Curtailed Struct. |
|-----------------|---------------------------|------------------------------|--------------|------------------|---------------------|---------------------------------|--|
| Leroux Creek | Currant Creek | 12269.00000 | 7/15/2003 | Season | Roy Wolf | Cow Creek Ditch | 12276.00000 |
| Leroux Creek | Highline Ditch | 11779.00000 | 7/18/2003 | Season | Marvin Carr | Currant Creek | 12269.00000 |
| Minnesota Creek | Minnesota Canal | 14413.13758 | 6/28/2003 | Season | Willie Kisler | Turner Ditch | 21263.17451 |
| Bell Creek | Clements Ditch | 29260.28641 | 7/10/2003 | Season | John McCallister | Kelly #1 | 31924.18353 |
| Roatcap Creek | Robert Stucker | 22339.00000 | 7/11/2003 | Season | Steve Wolcott | Oak Mesa | 25807.20011 |
| Bell Creek | No. Fork Orchard Ditch | 12147.00000 | 6/13/2003 | Season | Norm Smith | H.A. Smith | 13381.00000 |
| Surface Creek | Alfalfa Ditch | 11674.00000 | 4/1/2003 | Season | Billy Bookout | No senior water to curtail | |
| Surface Creek | Fogg Ditch | 12876.00000 | 4/21/2003 | Season | Roy Schroeder | Forrest Ditch | 12881.00000 |
| Surface Creek | Trickle Ditch | 11674.00000 | 4/26/2003 | Season | Mel Smith | Cold Water Ditch | 20501.14750 |
| Surface Creek | Bonita Ditch | 16514.00000 | 4/27/2003 | Season | Elmer Ferganchick | Horseshoe Ditch | 13615.00000 |
| Surface Creek | Gurney Ditch | 20501.15432 | 4/28/2003 | Season | Arlo Hanson | Zanola and Pelazini Ditch | 20501.15432 |
| Surface Creek | Omega Ditch | 20501.13240 | 4/30/2003 | Season | Roy Frey | Gurney Ditch | 20501.15432 |
| Surface Creek | Weir & Johnson Ditch | 20501.14735 | 5/1/2003 | Season | Ed Benson | Coldwater Ditch | 20501.14750 |
| Surface Creek | Gurney Ditch | 20501.15432 | 5/4/2003 | Season | Arlo Hanson | Zanola and Pelazini Ditch | 20501.15432 |
| Surface Creek | Bonita Ditch | 13514.00000 | 5/5/2003 | Season | Elmer Ferganchick | Weir & Johnson | 20501.14735 |
| Surface Creek | Trickle Ditch | 11674.00000 | 5/6/2003 | Season | Mel Smith | Bonita Ditch | 13514.00000 |
| Surface Creek | Paradise Ditch | 20501.13331 | 5/7/2003 | Season | Bill Kissner | Trickle Ditch | 11674.00000 |
| Surface Creek | Bonita Ditch | 13514.00000 | 5/8/2003 | Season | Elmer Ferganchick | Horseshoe Ditch | 13615.00000 |
| Surface Creek | Shepard Ditch | 12503.00000 | 5/10/2003 | Season | Bud Hawkins | Fogg Ditch | 12876.00000 |
| Surface Creek | Paradise Ditch | 20501.13331 | 5/12/2003 | Season | Bill Kissner | Trickle Ditch | 11674.00000 |
| Surface Creek | Coldwater Ditch | 20501.14750 | 5/13/2003 | Season | Lou Bickmore | Gurney Ditch | 20501.14750 |
| Surface Creek | Omega Ditch | 20501.15030 | 5/14/2003 | Season | Ray Frey | Paradise Ditch | 20501.13331 |
| Surface Creek | Gurney Ditch | 20501.15432 | 5/14/2003 | Season | Arlo Hanson | Zanola and Pelazini Ditch | 20501.15432 |
| Surface Creek | Rose Ditch | 20501.16527 | 5/16/2003 | Season | Ron Schaffer | Lone Pine Ditch | 20501.17790 |
| Surface Creek | Lone Pine Ditch | 20501.17790 | 5/17/2003 | Season | Dick Jones | Sooner Ditch | 25807.20960 |
| Surface Creek | Rose Ditch | 20501.16527 | 6/6/2003 | Season | Ron Schaffer | Lone Pine Ditch | 20501.17790 |
| Surface Creek | Weir & Johnson Ditch | 20501.15827 | 6/7/2003 | Season | Ed Benson | Cedar Mesa Ditch | 20501.16329 |

**APPENDIX E
DIVISION IV
2003 RIVER CALLS**

| Stream Affected | Name of Calling Structure | Admin # of Calling Structure | Date of Call | Duration of Call | Person Placing Call | Most Senior Curtailed Structure | Admin # of the Most Senior Curtailed Struct. |
|---------------------------------|------------------------------|------------------------------|--------------|------------------|---------------------|---------------------------------|--|
| Surface Creek | Gurney Ditch | 20501.15432 | 6/8/2003 | Season | Arlo Benson | Weir & Johnson Ditch | 20501.15827 |
| Surface Creek | Bonita Ditch | 13915.00000 | 6/9/2003 | Season | Elmer Ferganchick | Weir & Johnson | 20501.14735 |
| Surface Creek | Horseshoe Ditch | 20501.14366 | 6/11/2003 | Season | Bud Burgess | Bonita Ditch | 13514.00000 |
| Surface Creek | Paradise Ditch | 20501.13331 | 6/13/2003 | Season | Bill Kissner | Trickle Ditch | 11674.00000 |
| Surface Creek | Bonita Ditch | 13514.00000 | 6/14/2003 | Season | Elmer Ferganchick | Horseshoe Ditch | 13615.00000 |
| Surface Creek | Eric Johnson | 13120.00000 | 6/17/2003 | Season | Karen Foster | Bonita Ditch | 13514.00000 |
| Surface Creek | Butte Ditch | 13112.00000 | 6/19/2003 | Season | Bud Gregory | Eric Johnson Ditch | 13120.00000 |
| Surface Creek | Forrest Ditch | 12881.00000 | 6/21/2003 | Season | Ruth Peterson | Butte Ditch | 13112.00000 |
| Surface Creek | Fogg Ditch | 15876.00000 | 6/23/2003 | Season | Roy Schroeder | Forrest Ditch | 12881.00000 |
| Surface Creek | Settle Ditch | 12503.00000 | 6/25/2003 | Season | Bud Hawkins | Shepherd Ditch | 12717.00000 |
| Surface Creek | Orchard Ranch | 12182.00000 | 6/29/2003 | Season | Jim Latta | Settle Ditch | 12503.00000 |
| Surface Creek | Alfalfa Ditch | 11674.00000 | 7/9/2003 | Season | Billy Bookout | Orchard Ranch | 12182.00000 |
| <i>Water District 41</i> | | | | | | | |
| Uncompahgre River | M&D Canal | 12150.00000 | 7/8/2003 | 9/8/2003 | UVWUA – Mark Catlin | Ouray Ditch | 20063.11093 |
| <i>Water District 42</i> | | | | | | | |
| Kannah Creek | Bowen Private Ditch | 13121.00000 | 4/3/2003 | Season | Myron Barker | Smith Irrigation Ditch | 13234.00000 |
| Kannah Creek | Coulter Ditch | 22848.14458 | 4/3/2003 | Season | Myron Barker | None | |
| Kannah Creek | Brown and Campion | 12724.00000 | 4/10/2003 | Season | Bill Blair | Bowen Private Ditch | 13121.00000 |
| Kannah Creek | Bales Williams and Morrison | 12724.00000 | 4/14/2003 | Season | John Carelli | Kannah Creek Highline Ditch | 13904.00000 |
| Kannah Creek | Kannah Creek Extension Ditch | 12724.00000 | 4/13/2003 | Season | Edward Gardner | Smith Irrigation Ditch | 13007.00000 |
| Kannah Creek | Kannah Creek Highline Ditch | 12724.00000 | 3/22/2003 | Season | Danny Vannover | Florence H. Berry Ditch | 23490.00000 |

**APPENDIX E
DIVISION IV
2003 RIVER CALLS**

| Stream Affected | Name of Calling Structure | Admin # of Calling Structure | Date of Call | Duration of Call | Person Placing Call | Most Senior Curtailed Structure | Admin # of the Most Senior Curtailed Struct. |
|---------------------------------|----------------------------------|------------------------------|--------------|------------------|--------------------------|----------------------------------|--|
| Kannah Creek | Juniata Ditch | 12724.00000 | 3/21/2003 | Season | Danny Vannover | Kannah Creek Highline Ditch | 22848.21251 |
| Kannah Creek | Juniata 1 st Enlarged | 12724.00000 | 3/21/2003 | Season | Danny Vannover | None | |
| Kannah Creek | Raber Coal Creek Supply Ditch | 30895.29310 | 4/10/2003 | Season | Clint Miller | Juniata 1 st Enlarged | 32750.00000 |
| Kannah Creek | Northwestern Ditch | 12724.00000 | 4/10/2003 | Season | Junior Cole | Brown and Campion | 13102.00000 |
| <i>Water District 59</i> | | | | | | | |
| Gunnison and Tribs. | Gunnison Tunnel | 20393.18779 | 7/15/2003 | 9/8/2003 | Marc Catlin | Palisades Ditch | 28286.00000 |
| <i>Water District 60</i> | | | | | | | |
| Dry Creek | Craver Ditch | 24379.23193 | 4/4/2003 | 10/31/2003 | Jim Boulden | Plateau Basin Ditch | 32811.29324 |
| Naturita Creek | Grove Ditch | 12205.00000 | 5/6/2003 | 10/31/2003 | Charles Hughes | Lone Cone Ditch | 14549.00000 |
| Naturita Creek | Smuggler Ditch Pumpsite | 16010.00000 | 6/5/2003 | 10/31/2003 | Calvin Calhoun | Maverick Ditch Enl. | 21130.00000 |
| Naturita Creek | Maverick Draw Ditch | 12524.00000 | 6/26/2003 | 10/31/2003 | Earl Reams | Barry No. 1 Ditch | 14350.00000 |
| San Miguel River | Nucla Power Plant Ditch | 13058.00000 | 7/15/2003 | 10/13/2003 | Paul Castle | Highline Canal | 23681.21526 |
| San Miguel River | BCD Ditch | 13058.00000 | 7/22/2003 | 10/13/2003 | Earl Reams / Gary Walker | Highline Canal | 23681.21526 |
| San Miguel River | Reed Chatfield Alt. Pt. | 16984.00000 | 7/23/2003 | 10/13/2003 | Tandi Morgan | Highline Canal | 23681.21526 |
| San Miguel River | Highline Canal | 23681.21526 | 7/28/2003 | 10/13/2003 | Tandi Morgan | Hardscrabble Ditch | 25826.24289 |
| <i>Water District 61</i> | | | | | | | |
| Paradox Creek | Ray Ditch | 22366.21641 | 3/4/2003 | 10/31/2003 | Dale Phippeny | South Midway Ditch | 22366.21857 |
| Paradox Creek | Galloway Ditch | 22366.21641 | 4/21/2003 | 10/31/2003 | Greg Irwin | South Midway Ditch | 12862.00000 |

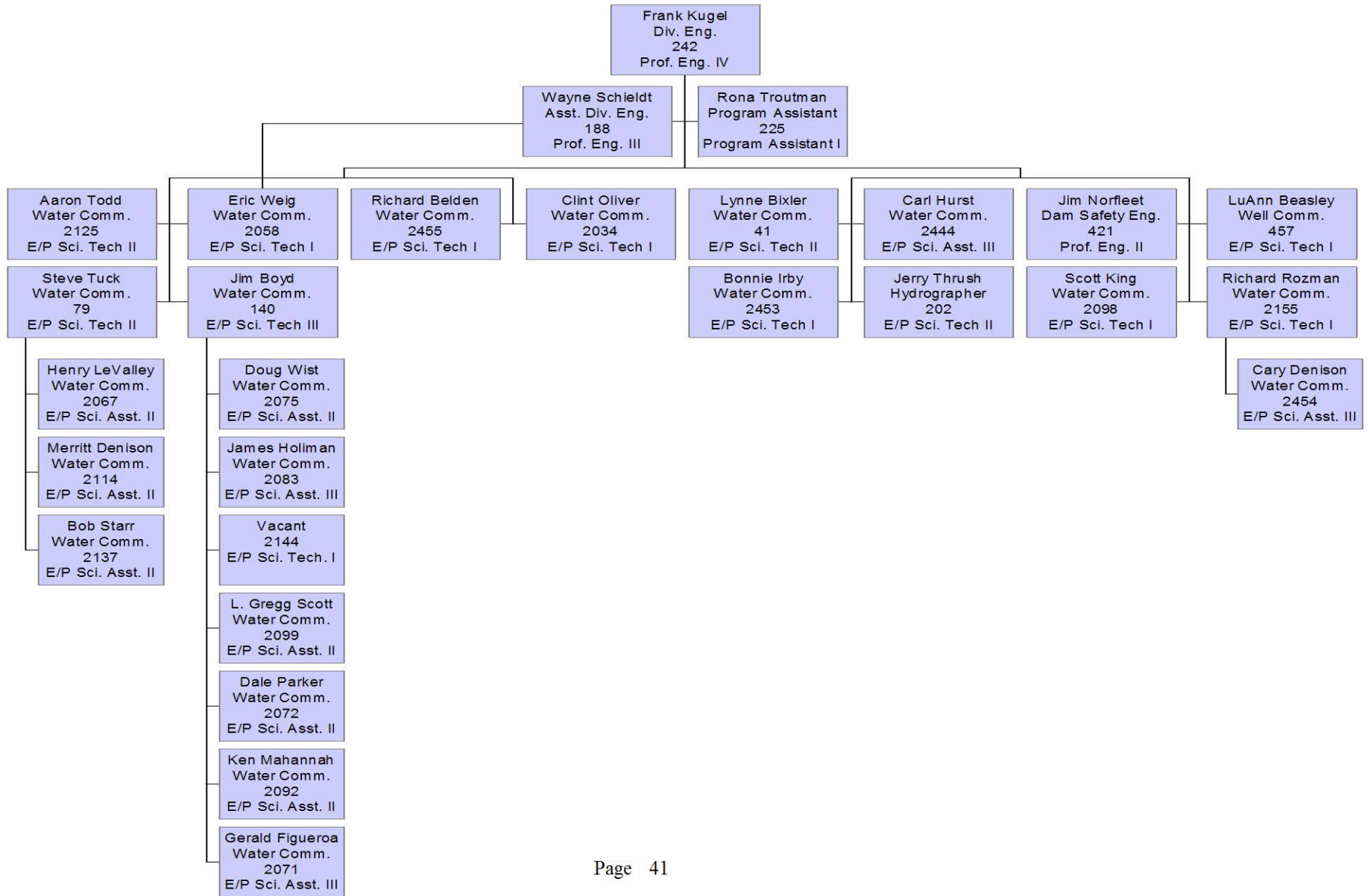
**APPENDIX E
DIVISION IV
2003 RIVER CALLS**

| Stream Affected | Name of Calling Structure | Admin # of Calling Structure | Date of Call | Duration of Call | Person Placing Call | Most Senior Curtailed Structure | Admin # of the Most Senior Curtailed Struct. |
|---------------------------------|--------------------------------|------------------------------|--------------|------------------|----------------------------------|---------------------------------|--|
| <i>Water District 62</i> | | | | | | | |
| Gunnison River | Gunnison Tunnel & South Canal | 20393.18779 | 7/15/2003 | 9/8/2003 | UVWUA – Mark Catlin | Reece Richart No. 2 Ditch | 27494.22035 |
| Big Cimarron River | Cimarron Canal - Stewart Creek | 19810.19448 | 5/23/2003 | 9/15/2003 | Cimarron Canal Co.- Gordon Autry | York Ditch #1 | 33348.31166 |
| Trout Creek | Johnson Ditch | 23093.12945 | 6/23/2003 | Season | Bill Thomas for A.E. Thomas | Trout Creek No. 1 Ditch | 23138.20175 |
| Powderhorn Creek | Dry Powderhorn D. | 15096.00000 | 7/1/2003 | Season | Tom Murphy | Powderhorn Irr. Ditch | 15120.00000 |
| Gunn River & Trib. | Gunnison Tunnel & S. Canal | 20393.18779 | 7/10/2003 | 9/8/2003 | UVWUA | Reese Richart No. 2 Ditch | 27494.22035 |
| <i>Water District 63</i> | | | | | | | |
| No Calls | | | | | | | |
| <i>Water District 68</i> | | | | | | | |
| Horsefly Creek | Albush Ditch | 21221.22524 | 4/09/2003 | 6/6/2003 | Mardell Sanders | Tierra Colorado Ditch | 27184.21672 |
| Horsefly Creek | Tierra Colorado Ditch | 27184.21672 | 4/14/2003 | 6/11/2003 | Mina Voss | Williams D Nos. 1, 2, & 3 | 29554.23861 |
| Cow Creek | Babb Ditch | 11809.00000 | 7/15/2003 | 10/31/2003 | Don Latham | Hi-Vu Pond Nos. 1 & 2 | N/A |
| System-wide | M&D Canal | 29554.09618 | 7/8/2003 | 7/10/2003 | Marc Catlin | Morrison Ditch | 29554.09649 |
| System-wide | M&D Canal | 14198.00000 | 7/10/2003 | 7/15/2003 | Marc Catlin | Alkali Ditch No. 1 | 14336.00000 |
| System-wide | M&D Canal | 12516.00000 | 7/15/2003 | 7/18/2003 | Marc Catlin | Burger Ditch | 12571.00000 |
| System-wide | M&D Canal | 12150.00000 | 7/15/2003 | 8/1/2003 | Marc Catlin | Shortline D. Cow Creek | 12174.00000 |
| System-wide | M&D Canal | 12516.00000 | 8/1/2003 | 8/18/2003 | Marc Catlin | Burger Ditch | 12571.00000 |
| System-wide | M&D Canal | 14198.00000 | 8/18/2003 | 9/8/2003 | Marc Catlin | Alkali Ditch No. 1 | 14336.00000 |

**APPENDIX E
DIVISION IV
2003 RIVER CALLS**

| Stream Affected | Name of Calling Structure | Admin # of Calling Structure | Date of Call | Duration of Call | Person Placing Call | Most Senior Curtailed Structure | Admin # of the Most Senior Curtailed Struct. |
|---------------------------------|---------------------------|------------------------------|--------------|------------------|-----------------------|---------------------------------|--|
| <i>Water District 73</i> | | | | | | | |
| Chiquito Dolores Cr | Chiquito Dolores Ditch | 17610.13149 17610.13980 | 5/7/2003 | 7/16/2003 | Warren Gore | Reed Ditch | 17610.15432 17610.16893 |
| Chiquito Dolores Cr | Chiquito Dolores Ditch #2 | 17610.15074 | 5/7/2003 | 7/16/2003 | Warren Gore | Reed Ditch | 17610.15432 17610.16893 |
| Chiquito Dolores Cr | Reed Ditch | 17610.15432 17610.16893 | 5/7/2003 | 7/16/2003 | Warren Gore | Thompson Feeder Ditch | 35018.00000 |
| Chiquito Dolores Cr | Robbin Ditch | 17610.13240 | 5/7/2003 | 7/16/2003 | Jay Vanloan | Reed Ditch | 17610.15432 17610.16893 |
| Chiquito Dolores Cr | Upper Saxbury Ditch | 17610.12875 | 7/16/2003 | Season | Mountain Island Ranch | Chiquito Dolores Ditch | 17610.13149 |

**Colorado Division of Water Resources
Division IV Personnel**



OFFICE ADMINISTRATION AND WORKLOAD MEASURES
ACTIVITY SUMMARY

WATER DIVISION NO. 4

2003 CALENDAR YEAR

| <u>ACTIVITY</u> | <u>TOTALS</u> |
|--|---------------|
| Professional and Technical Staff | 3 |
| Clerical Staff | 1 |
| Water Commissioners FTE (Full / Part-Time) | 23 |
| 2003 Decreed Surface Rights | 430 |
| Surface Rights Administered (visits) | 25,041 |
| Storage Rights Administered (visits) | 3,679 |
| 2003 Decreed Wells | 48 |
| 2003 Decreed Plans of Augmentation | 12 |
| Consultations with Referee | 347 |
| Water Court Appearances | 79 |
| Meetings with Water Users | 146 |
| Contacts to give public assistance | *19,877 |
| *Includes Water Commissioner Contacts | |