

ROY ROMER  
Governor



J.A. DANIELSON  
State Engineer  
S.E. VANDIVER  
Division Engineer

## DIVISION OF WATER RESOURCES

Division III  
422 4TH STREET  
P.O. BOX 269  
ALAMOSA, COLORADO 81101  
OFFICE: 303-589-6683

January 17, 1989

Dr. Jeris A. Danielson  
State Engineer  
Division of Water Resources  
1313 Sherman Street  
Denver, CO 80203

Dear Jeris:

On behalf of the staff of Division III, I submit herein the Annual Report for 1988.

I would like to express special thanks to the Division III staff as well as you and your staff for the help and support in fulfilling the various responsibilities of water administration in our division.

Respectfully submitted,

A handwritten signature in cursive script that reads "Steven E. Vandiver".

Steven E. Vandiver  
Division Engineer  
Division III

A handwritten signature in cursive script that reads "Robert M. Plaska".

Robert Plaska  
Assistant Division Engineer  
Division III

se

1 9 8 8

A N N U A L    R E P O R T

DIVISION OF WATER RESOURCES  
DIVISION III

COLORADO DEPARTMENT OF NATURAL RESOURCES

TABLE OF CONTENTS

| SUBJECT                                                     | PAGE                                        |
|-------------------------------------------------------------|---------------------------------------------|
| WATER ADMINISTRATION. . . . .                               | 1                                           |
| A. Current Water Year (1987-1988). . . . .                  | 1                                           |
| 1. Accomplishments. . . . .                                 | 1                                           |
| 2. Involvement in the Water User Community. . . . .         | 3                                           |
| 3. Particular Issues of Concern and Their Impact. . . . .   | 4                                           |
| 4. Effect of Work Load Changes. . . . .                     | 6                                           |
| 5. Impact of Budget on Division Operation . . . . .         | 6                                           |
| B. 1988-1989 I.Y. . . . .                                   | 7                                           |
| 1. Concerns Which Will Impact Division Operations . . . . . | 7                                           |
| 2. Projected Work Items Planned in 1989 . . . . .           | 8                                           |
| 3. Goals and Objectives . . . . .                           | 9                                           |
| APPENDIX A                                                  | 1988 Division III Staff                     |
| APPENDIX B                                                  | Division III Activity Summary               |
| APPENDIX C                                                  | 1988 Rio Grande Compact Report              |
| APPENDIX D                                                  | Transmountain Diversions Summary-Inflows    |
| APPENDIX E                                                  | Reservoir Storage Summaries                 |
| APPENDIX F                                                  | Water Diversion Summary by District IY 1988 |
| APPENDIX G                                                  | 1988 Annual Report District 22              |
| APPENDIX H                                                  | Water Court Report                          |

## WATER ADMINISTRATION

The 1988 runoff was much different than the three extraordinary high years of 1985-87. The "spell" was broken that had produced snowpacks which created three consecutive one million acre-foot years on the Rio Grande at Del Norte. The snowpack was 60-80% of normal and it produced a runoff of approximately 65-70% of normal in the Division. Normally this would have been a devastating year for agriculture, but because of good groundwater tables, an unprecedented fourth consecutive spill of Rio Grande Project water, well timed summer rains, and reservoir water the Division had a good irrigation season.

### A. CURRENT WATER YEAR 1987-1988

#### 1. ACCOMPLISHMENTS

a. Colorado's obligation under the Rio Grande Compact was met again in two ways. First, provisions in Article VI of the Compact provides that there is no annual obligation to deliver water to New Mexico in the year of a spill of water from Rio Grande Project Storage in Elephant Butte and Cabello Reservoirs. A "paper spill" occurred on January 31, 1988 assuring users that they would not be curtailed for Compact purposes throughout the irrigation season. This made a tremendous difference to irrigators, especially on the Conejos, by allowing them to use what water was available. Secondly, there was enough water from return flows, tributary inflows and winter flows that Colorado would have met its obligation without the spill.

River calls, the priority system and short supplies became real again in 1988. After six above normal years, the transition to a dry year was very disconcerting to the users and administrators alike. The residual effects of the high years had much to do with making 1988 a good year considering the lack of snowmelt runoff. Carryover reservoir water, excellent groundwater supply, timely precipitation and no Compact obligation made for another good production year for most all farmers and ranchers in the Division.

b. The satellite monitoring system worked well during the year and proved extremely useful providing critical streamflow data and allowed us to deliver water very efficiently to the users. Because of the very low runoff any change in flow was critical to administration of water rights and the Sutron system allowed us to immediately detect those changes and change our deliveries accordingly. This allowed us to deliver much more closely the water to which people were entitled.

c. Although the Division of Water Resources has no claim to the progress of the Closed Basin Project construction, Stages 1, 2, and 3 have been completed and are pumping water to the river and refuges. Stage 4 has not had any new work completed in 1988 because of funding problems. However, late in 1988 the budget ceiling for the Project was raised from 75 to 100 million dollars and hopes have been raised again that the Project will be entirely finished. Testing of all completed salvage wells, electronics, laterals and measuring structures was done throughout the year. Deliveries are as follows: 1785 af to the Blanca Wildlife Habitat Area, 3654 af to the Alamosa National Wildlife Refuge, and 11,777 af to the Rio Grande River. In spite of the uncooperative posture taken by the Division of Wildlife, the Bureau of Reclamation (USBR) tried to clean up San Luis Lake throughout the year by circulating good quality water through the lake and used the new San Luis Lake pumping plant to pump the mixed water back into the canal. The water quality in Stage 3 has been better than anticipated and is very encouraging to all involved.

d. Division III had a turnover in personnel during this past year with Wayne Schieldt transferring to Division 5 to take over the Sutron and hydrographic duties in Glenwood. Steven Kastner replaced him and we are fully staffed in the office. We had two veteran water commissioners retire this fall in Districts 21 and 35. Leo Gonzales and Carl Escherman retired after 36 and 11 years respectively and will be sorely missed. Their replacements will be picked very soon.

e. As mentioned above there was turnover in the hydro section which prevented us from using those engineers in the daily office routine like we have in the past. The training of new personnel takes the time we had used for their training in the past. We will begin the program again as soon as the stream flow records are completed for this year.

f. The diversion record production went very well this year with the additional computer and water commissioners entering most of their own records. The new programs of entering, printing, checking and signing off the records in our own office is very efficient and works much better than using the Denver office to handle those procedures. Thanks go to Bob Plaska, Sue Edling, the commissioners, and the Information Services Branch for all their work.

g. The 1988 water rights tabulation was completed early this year, updated through 1987 and was timely submitted to the court for notice of publication. This program, which is all done in the field offices, works well and the task is much less cumbersome than in the past. Thanks again to the staffs in Division III and Denver who made it work.

h. The administration of our augmentation plans continued to progress this year. Several plans were implemented for the first time which invoked their decreed terms and conditions. This causes some additional accounting and leg work but is getting better coordinated each year.

i. We were pleased that Platoro Reservoir was used again this year, thanks to another interim agreement with the USBR which had the Conejos Conservancy District pay approximately \$44,000 for the operation and maintenance of the Reservoir in turn for full use of the Reservoir water. The District used 15,493 acre feet to supplement their surface supplies. This was a great help and allowed many users to finish up their irrigations and even get second cuttings on alfalfa ground. The legislation that would allow the Conejos Water Conservancy District to buy the Reservoir was not considered in the Congress last session and will be reintroduced in this new session.

j. Relations with the water court continued to improve in 1988 while the Water Judge acted as the Referee. We conferenced with the Judge a number of times which allowed us to build a good working relationship with him and streamline much of the process. The Judge is currently seeking a new Referee for budget reasons, but we feel the current situation works much better than having a Referee.

k. Paul Clark from District 22 was chosen as the Division III Water Commissioner of the Year for 1988. Paul continues to run his District in an exemplary fashion and is very effective in his duties on the Conejos.

## 2. INVOLVEMENT IN THE WATER USER COMMUNITY

a. Our daily routines provide constant involvement with the water user community. Several hundred people a month come in or call the Division office for help solving their particular water problems. Working with the water bar and consulting engineers also keeps us in constant contact with the users.

b. I teach several classes at Adams State College each year for the International Irrigation Center. These classes generally include instruction on water rights and their administration, Compact concerns, and state government structure.

c. Our greatest exposure to the water user community comes with attendance at many of their meetings and Conservation and Conservancy District board meetings. The Rio Grande Water Users Association (RGWUA), the San Luis Valley, Alamosa-LaJara, Costilla, and Conejos Water Conservancy Districts (CWCD), the Rio Grande Water Conservation District (RGWCD) and the San Luis Valley Well Owners Association are the main organized groups. The public meetings implemented this year, as suggested by the State Engineer, went very well and were generally well attended by users not normally associated with the organized groups. It provided a whole new forum to reach and educate users which we were never exposed to before.

d. The water commissioners and hydros have constant involvement with the water user community. Ditch administration and measurements, field and dam inspections, and river measurements provide an excellent opportunity for our staff to be involved with the users.

e. We provide information to the public through media releases to try and keep them up-to-date on river conditions and Rio Grande Compact concerns.

f. We have participated in an interagency meeting of natural resource related agencies from both the federal and state governments. This provides us with a good opportunity to inform and educate other agencies of our duties, responsibilities, and opinions on resource related matters.

### 3. PARTICULAR ISSUES OF CONCERN AND THEIR IMPACT

a. With the spill of Elephant Butte Reservoir early in 1988, our attention to Compact administration was replaced by trying to formulate plans on how best to administer the river when we go back to an obligation status again. Several meetings were held between Jeris and attorneys representing the major user groups to identify the possibilities for Colorado under a no-debt situation under the Compact and start the process to form a plan to best meet the needs of all concerned. 1989 will provide an exciting new challenge of possibly returning to Compact administration if no spill occurs and having the Closed Basin Project come on line in the same year. The accounting for this added dimension of Compact administration will be quite a task.

b. The continuing saga of Platoro Reservoir started early in 1988 and was still very much unsettled at the end of the year. On January 14, 1988 the Division Engineer accompanied members of the Conejos Water Conservancy District and their counsel, David Harrison, to Washington, D.C. to discuss further the purchase of Platoro by the District. The group met with several House and Senate staff people as well as Commissioner Duvall, USBR, and Chief Robertson, USFS. The results of these discussions were mixed, but legislation was finally introduced in the latter part of the summer but it was never considered.

It is our understanding that the legislation will be reintroduced early in the 1989 session and the District will try to get approval to purchase the Reservoir from the Bureau of Reclamation.

c. In our opinion, river channels continue to deteriorate on the Valley floor because of the past damage high water years caused. The Conejos, Rio Grande and the Alamosa Rivers are of great concern. No comprehensive program exists for those rivers and only spotty work is done to fix the most critical areas. This "spotty" work seldom lasts more than one season and little is done to understand the effects of that work. Poor delivery efficiencies to water users and the Compact will surely result. With today's budget problems in all areas, little is expected to change to improve the river courses.

d. The concern over diversion and tabulation updates and data entry was greatly diminished this past year with good new software and dedicated work by many individuals. Both systems work very nicely for Division III and have greatly increased our accuracy and completeness of record.

e. The backlog of cases on the Water Court docket was 75 at the end of 1988. We have made continual progress because of streamlining processes in the court and by a significant reduction in cases filed the last two years. In 1987, 58 cases were filed and in 1988 only 35 cases were filed. This has reduced our court time considerably.

The new procedure for handling recommendations to the court brought about by HB1269 is rather cumbersome and time consuming and worked much better for Division III previous to the law being changed. We would like the Division as a whole to consider the time and expense of the law change and ask the legislature for monies to handle that process.

f. Steve Atencio, who was appointed as Referee on December 14, 1987, was dismissed in the spring of 1988 because of differences with the water court personnel. Judge Ogburn appointed himself as Acting Referee at that time and continued that status through 1988. This has worked well for the cases we have handled.

g. The funding and inherent water quality problems and the legal and political challenges to the Closed Basin Project could affect several agreements involving the allocation of its production. If for any of these reasons the Project doesn't produce, the need for extensive rules and regulations governing groundwater may again become necessary. Several things have changed in these areas over the past year which have affected the future of the Project. The U.S. Congress, in the waning moments of the last session, approved a ceiling increase for the Project to allow completion of Stages 4 and 5. This gift came with strings attached though as the legislation requires one-third cost sharing by other than federal entities for the \$25 million increase. That means the state or local governments will have to come up with up to six million dollars to complete the Project.

Water quality in Stages 1, 2 and 3 seems to be better than was predicted and is a very positive sign in an otherwise long year for the proponents of the projects.

The Rio Grande Water Conservation District has consumed a large portion of time with the AWDI case 86CW46. The complexion of the case changes daily with vast interrogatories and discovery requests and recent dismissal possibilities.

h. The litigation of large cases like the AWDI and USA's "flushing flows" are always a concern. The resources and time required to conclude these matters are costly and take away from many other things, but the importance of them is so great we must stay in the cases to protect senior vested rights from these claims.



#### 4. EFFECTS OF WORK LOAD CHANGES

a. The continuous training of the Division III staff in the use of the computer has taken some time but the benefits of that training have been numerous. Most of the commissioners have really taken to the diversion data entry process and we hope to continue and expand on it in the future.

b. Having evaluated all of the the Division III augmentation plans we now have the necessary information to administer these plans correctly. This new task will take some time of the commissioners and Division staff and will demand efficient planning in our work load to accomplish this task.

c. The new program we started in 1987 and continued until mid-1988 that rotated the hydros into the front office (one hydro per week) resulted in more efficient records investigations, resume review, court case analysis, and tabulation updates while Bob Plaska and I were involved in other things. We were able to accomplish this without a reduction in their work product and greatly increased their exposure to other Division responsibilities. The fact that we were able to do these things without their assigned workload suffering comes about because of increased budget restrictions the last few years that prevents them from being in the field as they should be. Under these circumstances the move appeared to be a very good one. With a turnover of staff we weren't able to continue this program through the last half of the year. Also with the increase in the budget for 1988-89 the hydros may be back in the field more the remainder of the year.

d. The water commissioners have arranged their work to allow for diversion data entry in the computer. As near as we can tell it has not had an effect on their responsibilities for ditch administration.

#### 5. IMPACT OF BUDGET ON DIVISION OPERATIONS

a. The 1987-88 budget was reduced from the year previous by \$500; therefore, the reduced activity described over the past several years continued through June, 1988.

b. Fortunately for Division III our 1988-89 budget was increased approximately \$3,000 and finally allowed a return to near normal operation for the current fiscal year. This has allowed additional travel and operational opportunities which have been lacking for several years.

c. The consolidated budget worked well in Division III. To have the ability to transfer funds to critical items makes good sense and creates incentives to work for an efficient budget and allows for important areas to be addressed.

B. 1988-1989 I.Y.

1. CONCERNS WHICH WILL IMPACT DIVISION OPERATIONS

a. 1989 is going to prove to be interesting because of the possibility of a spill in the first half of the year. Cooperative water users and a mild winter are providing good deliveries to Elephant Butte Reservoir and we are only 200,000 af short of a spill as of the date of this report. With a continuation of a good base flow and a good snowpack we can spill Project Storage this year relieving us of a delivery obligation for the fifth year in a row. If flows drop off and we fail to realize a good runoff we probably will not achieve a spill. Therefore, that guessing game will continue throughout the winter and spring and will keep us thinking of every possible way to encourage a spill.

b. For the first time in several years most of our active reservoirs are repaired and functioning properly. We feel we still need a good monitoring program on all our dams to insure that we observe any change in their status.

c. Our concerns over the future ownership and utility of Platoro Reservoir are as great as ever as we start the new irrigation season. The USBR has an agreement with the Conejos Water Conservancy District that no more interim contracts would be considered and that the original repayment and O and M contract would be invoked. Also, counsel for the Conejos District will have the legislation to allow purchase of the reservoir reintroduced in Congress in January, 1989. Depending on the outcome of those problems Platoro could become very useful or continue to be the white elephant it has been in the past. We sincerely hope the District can obtain control of the Reservoir and it can become useful to the users on a fulltime basis.

d. As expected, the 1986 filing by American Water Development Inc. (AWDI) has continued to cause ever increasing problems for water users groups, the USBR and the State. After several months of political wrangling AWDI now has followed with lengthy discovery requests of the RGWCD and the RGWUA while refusing to answer most of the users discovery. The State has completed initial calibration of the computer model and has attained good correlation on several runs. We are then looking forward to being able to use the model in the future to calculate effect of well pumping in all areas of the San Luis Valley.

e. As mentioned previously the Closed Basin Project is on line yet not complete. Stages 1-3 are operable and currently delivering water to the Rio Grande River. This will help meet our 1989 Compact obligations as well as encourage a spill of Rio Grande Project Storage. Our continuing concern of water quality and quantity we can rely on, funding to complete the project, and AWDI's effect on the Project are great. We continue to pursue an intelligent course of action in the matter to help attain good data and have the model in as good a condition as possible to provide good answers to many critical questions.

f. Hiring good qualified people for the vacant positions and getting them ready to handle their areas of responsibility is perhaps our most immediate concern. District 35 is a single commissioner district and District 21 will have new people in two positions. Therefore, the Assistant and Division Engineers will be spending much time supervising the operations in both those Districts. We hope we can contract with the veteran commissioners to help us for a few weeks to get them started.

## 2. PROJECTED WORK ITEMS IN 1989

a. Maximize the possibility of spill of Rio Grande Project Storage.

b. Continue to help attain the use of Platoro Reservoir for the Conejos water users.

c. Help the Denver office and the other objectors in the evaluation and resolution of the AWDI application for 200,000 af annually of confined aquifer water in the Closed Basin.

d. Draft an outline of the major areas of concern that need to be addressed in the rules and regulations for the administration of groundwater in the San Luis Valley.

e. Respond to all protests to the 1988 tabulation and resolve them appropriately.

f. Cross linking of the water rights data with the diversion database.

g. Continue to help the staff develop their ability to utilize the computer.

h. Implement all plans for augmentation.

i. Work with area legislators to provide full funding for the satellite monitoring program and a better budget situation.

j. Work for a full staff considering the number of retirements and transfers we have and train them as quickly as possible to handle their respective responsibilities.

k. Handle administrative and record keeping tasks more efficiently.

l. Monitor all dams.

m. Continue public meeting program.

## 1989 GOALS AND OBJECTIVES

1. Administer water rights according to decree, statute and applicable case law.
2. Develop personnel in their education, background, and develop and/or maintain good working relationships with all staff.
3. Serve the public in a helpful, cordial and concientious manner by taking time to educate and assist them with their concerns.
4. Do practical and reasonable planning in writing.
5. Improve coordination of court cases we are involved in with Denver staff and AG's office.
6. Secure a budget and personnel database.
7. Make any necessary corrections to the 1988 tabulation for Division III.
8. Continue to develop relationship with the water court.
9. Expand satellite monitoring system to private ditches and reservoirs in our division.
10. Increase records quality; i.e., hydrographic, diversion, tabulation, and decrees.
11. Finish and fully utilize the Water Commissioner's Manual.

A P P E N D I X A

1988 DIVISION III STAFF

Office Staff

Steven E. Vandiver. . . . . Division Engineer  
Principal Water Resource Engineer  
Bob Plaska. . . . . Assistant Division Engineer  
Supv. Water Resource Engineer  
Sue Edling. . . . . Sr. Secretary  
Bruce Whitehead . . . . . Water Resource Engineer C  
Kenneth Knox. . . . . Water Resource Engineer C  
Steven Kastner. . . . . Water Resource Engineer A  
Dennis Felmlee. . . . . Well Commissioner C

Water Commissioners and Deputies

Max Nash . . . . . Sr. Water Commissioner, District 20  
Travis Smith . . . . . Deputy/Water Commissioner C  
District 20  
Ben Cannon . . . . . Deputy/Water Commissioner B  
District 20  
Leo Gonzales (Retired 11/30/88). . . . . Water Commissioner C, District 21  
Jim Sellers. . . . . Deputy/Water Commissioner B  
District 21  
Paul Clark . . . . . Sr. Water Commissioner, District 22  
Jim Horton . . . . . Deputy/Water Commissioner B  
District 22  
Charlie Quintana . . . . . Water Commissioner B, District 24  
Henry Lamm . . . . . Water Commissioner C, District 25  
Timothy Lovato . . . . . Water Commissioner C, District 26  
Perry Alspaugh . . . . . Water Commissioner B, District 27  
Carl Escherman (Retired 12/31/88) . . . . . Water Commissioner C, District 35

A P P E N D I X B

WATER DIVISION NO. 3

1988 CALENDAR YEAR

ACTIVITY SUMMARY

| <u>ACTIVITY</u>                                                  | <u>TOTAL</u>                   |
|------------------------------------------------------------------|--------------------------------|
| No. of Professional and Technical Staff                          | 5                              |
| No. of Clerical Staff                                            | 1                              |
| No. of Water Commissioner FTE<br>Assigned (Full/Part-Time)       | 4/8                            |
| No. of Decreed Surface Rights                                    | Approx. 2500 total             |
| No. of Surface Rights Administered<br>(water diverted this year) | 655                            |
| No. of Wells                                                     | Approx 22,836<br>Decreed Wells |
| No. of Plans for Augmentation                                    | 1 new - 47 total               |
| No. of Consultations with Referee                                | 63                             |
| No. of Water Court Appearances                                   | 33                             |
| No. of Meetings with Water Users                                 | 154                            |
| No. of Meetings to Resolve Water<br>Related Disputes             | 126                            |
| No. of Contacts to Give Public<br>Assistance on Water Matters    | 8555*                          |

\*Includes Water Commissioner Contacts 7-1-88 to 12-31-88

A P P E N D I X C

1988 RIO GRANDE COMPACT REPORT

Preliminary Figures

|                                                         | <u>Acre-Feet</u>       |
|---------------------------------------------------------|------------------------|
| 1. Rio Grande River Index. . . . .                      | 435,100                |
| **Actual Rio Grande Delivery. . . . .                   | 146,500                |
| *Required Rio Grande Delivery. . . . .                  | 107,800                |
| 2. Combined Conejos Index. . . . .                      | 202,000                |
| Actual Conejos Delivery . . . . .                       | 34,200                 |
| *Required Conejos Delivery . . . . .                    | 46,200                 |
| 3. Combined Rio Grande River System Index. . . . .      | 637,100                |
| **Total Actual Delivery at Lobatos. . . . .             | 180,700                |
| *Total Required Delivery at Lobatos. . . . .            | 154,000                |
| *Margin Including 10,000 a.f. Credit . . . . .          | 36,700                 |
| 4. Rio Grande Curtailment                               |                        |
| Target (% of Index)                                     | Actual (% of Index)    |
| Jan. 1 to Jan. 31 100+%                                 | Jan. 1 to Jan. 31 100% |
| Feb. 1 to Oct. 31 0 %                                   | Feb. 1 to Oct. 31 0%   |
| Nov. 1 to Dec. 31 100+%                                 | Nov. 1 to Dec. 31 100% |
| 5. Conejos Curtailment                                  |                        |
| Target (% of Index)                                     | Actual (% of Index)    |
| Jan. 1 to Jan. 31 100+%                                 | Jan. 1 to Jan. 31 100% |
| Feb. 1 to Oct. 31 0 %                                   | Feb. 1 to Oct. 31 0%   |
| Nov. 1 to Dec. 31 100+%                                 | Nov. 1 to Dec. 31 100% |
| 6. Water Available in Platoro Reservoir (approximately) | 29,334 a.f.            |
| on December 31, 1988                                    |                        |

\*Assuming Spill had not Occurred

\*\*Includes all of the Closed Basin Project production delivered to the Rio Grande River which was 11,777 a.f.

A P P E N D I X D

PRELIMINARY

TRANSMOUNTAIN DIVERSIONS SUMMARY - INFLOWS

| WD | NAME                      | RECIPIENT<br>STREAM | PREVIOUS I YR |      | I YR OF RECORD |      | SOURCE<br>STREAM |                   |
|----|---------------------------|---------------------|---------------|------|----------------|------|------------------|-------------------|
|    |                           |                     | AF            | DAYS | AF             | DAYS |                  | WD                |
|    |                           |                     |               |      |                | 87   |                  |                   |
|    |                           |                     |               |      |                | 88   |                  |                   |
| 20 | Weminuche Pass Ditch      | Weminuche Cr        | 0             | 0    | 602            | 51   | 31               | Rincon La Vaca Cr |
| 20 | Pine River Weminuche Pass | Weminuche Cr        | 575           | 92   | 865            | 83   | 31               | N Fork Los Pinos  |
| 20 | Williams Cr Squaw Pass D  | Squaw Creek         | 530           | 91   | 230            | 63   | 78               | Williams Creek    |
| 20 | Tabor Ditch               | Clear Creek         | 1310          | 134  | 370            | 60   | 62               | Cebola Creek      |
| 20 | Don La Font #1 Ditch      | South River         | 17            | 43   | 234            | 140  | 78               | Trib Piedra River |
| 20 | Don La Font #2 Ditch      | South River         | 350           | 88   | 552            | 148  | 78               | Trib Piedra River |
| 20 | Treasure Pass Ditch       | S.F. Rio Grande     | 0             | 0    | 223            | 57   | 29               | Wolf Creek        |
| 20 | Tarbell                   | Saguache Creek      | 55            | 14   | 195            | 21   | 28               | Cochetopa Creek   |

PRELIMINARY

TRANSMOUNTAIN DIVERSIONS SUMMARY - OUTFLOWS

|    |                 |          |     |    |     |    |    |              |
|----|-----------------|----------|-----|----|-----|----|----|--------------|
| 16 | Hudson Branch D | Huerfano | 198 | NA | 0   | NA | 35 | Medano Creek |
| 16 | Medano Ditch    | Huerfano | 124 | NA | 518 | NA | 35 | Medano Creek |



A P P E N D I X E

RESERVOIR STORAGE SUMMARIES

| WD | RESERVOIR NAME | CAPACITY<br>AF | STREAM SOURCE    | PREVIOUS I YR<br>1987 |     | I YR OF RECORD<br>1988 |      | END I YR<br>AF | %      |        |     |        |    |
|----|----------------|----------------|------------------|-----------------------|-----|------------------------|------|----------------|--------|--------|-----|--------|----|
|    |                |                |                  | BEG I YR              | %   | BEG I YR               | %    |                |        |        |     |        |    |
|    |                |                |                  | AF                    | AF  | AF                     | AF   |                |        |        |     |        |    |
|    |                |                |                  |                       |     |                        |      |                | 4/1/88 |        |     |        |    |
| 20 | Continental    | 22,679         | N Clear Creek    | 6,145                 | 27  | 11,000                 | 49   | 9,126          | 40     | 12,753 | 56  | 1,381  | 6  |
| 20 | Rio Grande     | 51,113         | Rio Grande River | 0                     | 0   | 3,500                  | 7    | 3,000          | 6      | 9,441  | 18  | 6,414  | 13 |
| 20 | Santa Maria    | 45,070         | N Clear Creek    | 28,724                | 64  | 25,078                 | 56   | 13,179         | 29     | 13,607 | 30  | 8,296  | 18 |
| 21 | Terrace        | 15,182         | Alamosa River    | 7,700                 | 51  | 12,049                 | 79   | 3,290          | 22     | 7,200  | 47  | 1,500  | 10 |
| 22 | Platoro        | 59,570         | Conejos River    | 52,300                | 88  | 47,000                 | 79   | 44,150         | 74     | 43,354 | 73  | 28,988 | 49 |
| 24 | Sanchez        | 103,114        | Culebra Creek    | 41,815                | 41  | 42,486                 | 41   | 45,599         | 44     | 43,506 | 42  | 32,070 | 31 |
| 35 | Mt. Home       | 17,347         | Trinchera Creek  | 6,134                 | 35  | 7,532                  | 43   | 2,377          | 14     | 3,847  | 22  | 2,324  | 13 |
| 35 | Smith          | *5,808         | Trinchera Creek  | 5,887                 | 101 | 5,966                  | *103 | 4,358          | 75     | 6,045  | 104 | 3,076  | 53 |

\*Corrected Reservoir Capacity

A P P E N D I X F

WATER DIVERSION SUMMARY BY DISTRICT

IY 1988

| WD             | NO STRUCTURES<br>REPORTED | NO OF DITCH<br>VISITATIONS | TOTAL*<br>DIVERSIONS<br>[AF] | TOTAL DIVERSION<br>TO STORAGE<br>[AF] | DIVERSIONS<br>[AF] | IRRIGATION USE     |     | AVERAGE<br>AF/ACRE |
|----------------|---------------------------|----------------------------|------------------------------|---------------------------------------|--------------------|--------------------|-----|--------------------|
|                |                           |                            |                              |                                       |                    | ACRES<br>IRRIGATED | USE |                    |
| 20             | 182                       | 9,444                      | 434,182                      | 24,676                                | 428,852            | 340,649            |     | 1.3                |
| 21             | 76                        | 3,210                      | 62,591                       | 5,078                                 | 62,316             | 30,679             |     | 2.0                |
| 22             | 102                       | 4,291                      | 203,200                      | 1,978                                 | 200,415            | 85,814             |     | 2.3                |
| 24             | 67                        | 3,353                      | 56,187                       | 5,607                                 | 52,761             | 23,054             |     | 2.3                |
| 25             | 103                       | 1,360                      | 69,572                       | 0                                     | 69,572             | 18,778             |     | 3.7                |
| 26             | 47                        | 972                        | 24,445                       | 0                                     | 24,445             | 12,100             |     | 2.0                |
| 27             | 25                        | 1,033                      | 8,171                        | 0                                     | 8,171              | 1,437              |     | 5.7                |
| 35             | 53                        | 2,025                      | 43,589                       | 8,595                                 | 43,583             | 18,584             |     | 2.3                |
| TOTAL<br>DIV 3 | 655                       | 25,688                     | 901,937                      | 45,934                                | 890,115            | 531,095            |     | 1.7                |

\*Excludes All Diversions for Exempt Type and Use Codes and Diversions to Storage

A P P E N D I X F, continued

WATER DIVERSION SUMMARY BY DISTRICT

IY 1988

| WD    | MUNICIPAL<br>(AF) | INDUSTRIAL<br>(AF) | DOMESTIC<br>(AF) | AUGMENTATION<br>(AF) | RECHARGE |
|-------|-------------------|--------------------|------------------|----------------------|----------|
| 20    | 2045              | 0                  | 202              | 194                  | 0        |
| 21    | 0                 | 275                | 0                | 1493                 | 0        |
| 22    | 434               | 0                  | 355              | 85                   | 1996     |
| 24    | 0                 | 0                  | 3426             | 0                    | 0        |
| 25    | 0                 | 0                  | 0                | 0                    | 0        |
| 26    | 0                 | 0                  | 0                | 0                    | 0        |
| 27    | 0                 | 0                  | 0                | 0                    | 0        |
| 35    | 0                 | 0                  | 0                | 534                  | 0        |
| TOTAL | 2479              | 275                | 3983             | 2306                 | 1996     |

1988

ANNUAL REPORT

DIVISION OF WATER RESOURCES

DIVISION III  
District 22

Paul Clark, Water Commissioner  
Jim Horton, Deputy Water Commissioner

ROY ROMER  
Governor



J.A. DANIELSON  
State Engineer  
S.E. VANDIVER  
Division Engineer

**DIVISION OF WATER RESOURCES**

**Division III**  
422 4TH STREET  
P.O. BOX 269  
ALAMOSA, COLORADO 81101  
OFFICE: 303-589-6683

December 23, 1988

Mr. Steven E. Vandiver  
Division Engineer  
Division of Water Resources  
P. O. Box 269  
Alamosa, CO 81101

Dear Steve:

On behalf of the Water Commissioners of Division III, District 22, I submit herein the Annual Report for 1988.

I would like to express special thanks to you and your staff, and the Conejos Water Conservancy District Board and staff, for your help and support in fulfilling the various responsibilities of water administration in our district.

Respectfully submitted,

*Paul R. Clark*  
Paul R. Clark  
Sr. Water Commissioner  
District 22

*Jim Horton*  
Jim Horton  
Water Commissioner B  
District 22

se

encl.

ANNUAL REPORT  
District 22

In 1988 we had an above average snowfall on the valley floor. Ironically the snowpack for the surrounding mountains was near record low. The upper index for the Conejos system, Conejos at Mogote, Los Pinos near Ortiz, and San Antonio near Ortiz, was the lowest since 1981. Due to the spill of Elephant Butte, before the irrigation season began and the high ground water table there was enough water for every system that was ready and in need of water until April 28.

The weather cooperated to a great extent. The gradual warm up allowed users to put the majority of the spring runoff to the best beneficial use with little water passing the lower index stations.

Under normal Compact delivery, had there not been a spill, we would have been obligated to deliver approximately 45.5 thousand acre feet out of an index of 202 thousand acre feet. We will have delivered approximately 33 thousand acre feet by January 1, 1989.

Due to the rainfall in the southern area of the drainage basin this is the first time the San Antonio has not dried up during the months since 1970.

The Conejos Water Conservancy District obtained a service contract from the Bureau of Reclamation for Platoro Reservoir for the 1988 season; therefore, there was water available for the users, which was a tremendous help to them.

With the purchase of 15,493 acre feet water from the District, and the use of some wells, the users had sufficient water to carry them through the season.

We have worked up some maps that show the irrigated acres and the crops on each field. The total acres of each crop is shown on the attached page. We will have this information to monitor the change in cropping patterns as they get to use the reservoir more.

The Closed Basin will probably go into production in 1989. The monitoring system on the discharge will help in our daily duties of administering the river and making Compact deliveries.

In 1988 District 22 was assigned a state vehicle for the use of the Water Commissioner. This is the first time a vehicle has been assigned in this district. We would like to extend our appreciation to the State Engineer as well as the Division Engineer, Steven E. Vandiver, for this new assignment.

Lewis B. Maytag and David Maytag applied for a change in water rights in 1987(87CW41) from the south side of the river to the north side. A judgment and decree was signed by District Judge Robert Ogburn, December 9, 1988 (see 87CW41 for details).

We discovered two illegal diversions this spring. Location: SW1/4, SW1/4, S2, R7E, T32N, NMPM, and SW1/4, NW1/4, S2, R7E, T32N, NMPM. (See attached map.)

Statistics for 1988

(See Attached Acreage and Crop Report)

Irrigated Acres. . . . . 85,506 acres  
Upper Index through October. . . . . 195,500 a.f.  
Increase in Storage. . . . . 1,900 a.f.  
Water Released from Storage to District Lands. . . . . 15,493 a.f.  
Lower Index through October. . . . . 27,400 a.f.

| Crops                       | Percentage       |                    |
|-----------------------------|------------------|--------------------|
|                             | <u>Acres</u>     | <u>Total Acres</u> |
| Alfalfa . . . . .           | 20,377 . . . . . | 24 %               |
| Small Grains. . . . .       | 8,247 . . . . .  | 10 %               |
| Irrigated Pasture . . . . . | 16,747 . . . . . | 19 %               |
| Meadow Hay Land. . . . .    | 38,447 . . . . . | 45 %               |
|                             |                  |                    |
| Potatoes . . . . .          | 839 . . . . .    | 2 %                |
| Beans. . . . .              | 2                |                    |
| Mixed Feed . . . . .        | 564              |                    |
| Fallow . . . . .            | 283              |                    |
|                             |                  |                    |
|                             | TOTAL . . .      | 85,506             |
|                             |                  | 100 %              |

REPORT OF AUGMENTATION PLANS  
District 22

Taos Valley Canal #3 ran less than 15 cfs from April 4-13 to May 5-30 in compliance with the San Luis Valley Well Users plan of augmentation.

Aspen Springs  
81CW14

There was no water available for the Jacobs #1 and #3 during the time they normally called for it according to the ten year record numbers used for the plan. Mr. Robins agreed to make a home owners report to the Division Engineer's Office for this plan.

Tixier, Ramirez, and Robins Subdivision  
82CW76

There was no water available for the Jacobs Ditches #1 and #3 during the time they normally diverted water according to the ten year record used for the plan. Mr. Robins filed in Water Court to make absolute the conditional water right issued for the spring on this property. They have not had the final hearing yet. He also agreed to make a home owners report to the Division Engineer's Office for this plan.

Frenchman's Creek Subdivision  
83CW15

The Denver office has stopped issuing well permits for this plan of augmentation because they have not complied with the conditions of the decree.

HORCA Subdivision  
83CW93

The Bernardo/Romero #35 diversion was decreased by 0.50 cfs from April 15 to April 28, May 15 to May 26 to July 3, 1988 - fifty-nine days. This would indicate that 58.40 acre feet was dedicated to the river. Hay was cut and baled on the land to be removed from production. Mr. Robins agreed to send a report to the Division Engineer's Office for this plan

Ranchito Del Rio Conejos Subdivision  
84CW96

Two acre feet of water was returned to the river from the Vega Ditch in compliance with the augmentation plan. There have not been any homes or wells constructed on this subdivision. Richard Gilbreath agreed to file a report by May 1, 1988.

Conejos River Limited  
86CW6

There have not been any well permits issued. There was 3.3 acre feet of water returned to the river. There has not been a reservoir constructed. The land to be taken out of productions has not been identified.



## ACREAGE &amp; CROP REPORT

| DITCH SYS<br>NAME & NO  | ID. | HAY<br>MEADOW | ALFALFA | SMALL<br>GRAIN | IRRG.<br>PASTURE | POTATOES                    | TOTAL         |
|-------------------------|-----|---------------|---------|----------------|------------------|-----------------------------|---------------|
|                         |     |               |         |                |                  | MIX FEED<br>BEANS<br>FALLOW | IRRG<br>ACRES |
| ALAMO                   | 501 | 1270          | 77      |                |                  |                             | 1347          |
| AN CON                  | 502 | 515           | 131     | 102            |                  | 7                           | 755           |
| ANGOSTURA               | 503 |               | 100     |                |                  |                             | 100           |
| ANTONITO                | 504 |               | 52      |                | 229              |                             | 281           |
| ARCHULETA<br>TROGILLO   | 506 | 400           |         |                |                  |                             | 400           |
| ARCHULETA<br>TROGILLO-2 | 505 | 480           |         |                |                  |                             | 480           |
| BAGWELL                 | 508 |               |         |                | 180              |                             | 180           |
| BALLS BROS<br>NO.2      |     |               |         |                | 560              |                             | 560           |
| BRAIDEN<br>NO.1         | 515 | 425           |         |                |                  |                             | 425           |
| BRAIDEN<br>NO.2         | 516 | 100           |         |                |                  |                             | 100           |
| BRAIDEN<br>NO.3         | 517 | 80            |         |                |                  |                             | 80            |
| BRANCH                  | 518 | 110           |         |                |                  |                             | 110           |
| BROYLES<br>NO. 4        | 664 | 210           |         |                |                  |                             | 210           |
| CANON IRRG.<br>APD.     | 829 | 10            |         |                |                  |                             | 10            |
| CANON<br>IRRIGATION     | 524 | 55            | 457     |                | 1443             |                             | 1955          |
| CARPE &<br>REEKERS      | 525 |               |         | 20             |                  |                             | 20            |
| CHACON NO.1             | 526 | 280           | 40      |                |                  |                             | 320           |
| CHAVEZ                  | 527 | 82            |         |                |                  |                             | 82            |
| CORDOVA                 | 531 | 240           |         |                |                  |                             | 240           |
| EASTBEND                | 535 | 80            |         |                | 720              |                             | 800           |
| EASTBEND<br>NO.2        | 536 | 120           | 40      |                |                  |                             | 160           |
| EL CODA                 | 538 | 823           | 577     |                | 100              |                             | 1500          |
| EL SERRITOS             | 539 | 290           |         |                | 33               |                             | 323           |
| ELLEDGES                | 540 | 140           |         |                |                  | 80                          | 220           |
| EPHRAIM                 | 541 | 1062          | 1278    | 279            | 715              |                             | 3334          |
| ESPINOSA                | 542 | 20            |         |                |                  |                             | 20            |
| FLORIDA                 | 543 |               | 70      | 127            | 603              |                             | 800           |
| FUERTICITOS             | 547 | 360           | 40      |                |                  |                             | 400           |
| GABRIEL<br>MARTINEZ     | 548 |               | 40      |                |                  |                             | 40            |
| GALBIS                  | 549 | 175           |         |                |                  |                             | 175           |
| GARCIA                  | 552 | 320           |         |                |                  |                             | 320           |
| GUADALUPE<br>MAIN       | 553 | 759           | 525     | 158            | 358              |                             | 1800          |
| HEADSMILL               | 554 | 39            | 486     | 755            |                  |                             | 1280          |
| HOME                    | 555 |               |         |                | 160              |                             | 160           |
| HUGHS NO.1              | 556 | 320           |         |                |                  |                             | 320           |
| ISLAND NO.2             | 559 | 100           |         |                |                  |                             | 100           |

|              |     |      |      |      |      |      |      |       |
|--------------|-----|------|------|------|------|------|------|-------|
| JF CHACON    | 561 | 276  |      | 44   |      |      |      | 320   |
| JM ESPINOSA  | 563 | 40   |      |      |      |      |      | 40    |
| JACKS        | 564 |      |      |      | 58   |      |      | 58    |
| JACKSON      | 565 | 106  |      |      |      |      |      | 106   |
| JARAMILLO    |     |      |      |      |      |      |      |       |
| NO. 1        | 569 | 320  |      |      |      |      |      | 320   |
| JOHN         |     |      |      |      |      |      |      |       |
| W FLOYD      | 571 | 520  |      |      |      |      |      | 520   |
| LA DEL RIO   | 576 | 817  | 143  |      |      |      |      | 960   |
| LE DUC       | 579 | 80   |      |      |      |      |      | 80    |
| LLANO        | 580 | 580  | 105  |      |      | 47   |      | 732   |
| LOBATO &     |     |      |      |      |      |      |      |       |
| CORDOVA      | 581 |      |      |      | 186  |      | 254  | 440   |
| LOPEZ        | 583 | 140  |      |      |      |      |      | 140   |
| LOS OJOS     |     |      |      |      |      |      |      |       |
| NO.1         | 584 | 987  | 133  |      |      |      |      | 1120  |
| LOS OJOS     |     |      |      |      |      |      |      |       |
| NO.2         | 585 |      | 20   |      |      |      |      | 20    |
| LOS PINOS    | 586 | 300  |      |      |      |      |      | 300   |
| LOS SAUCES   | 587 | 1869 | 338  |      | 33   |      |      | 2240  |
| LOVATO       | 588 | 20   |      |      |      |      |      | 20    |
| LOVATO IRRG  | 589 | 780  |      |      |      |      |      | 780   |
| MANASSA      | 593 | 4424 | 6468 | 2943 | 1782 |      | 195  | 15812 |
| MARTINEZ     | 598 | 557  |      |      |      |      |      | 557   |
| MARTINEZ SA. | 597 | 206  | 174  |      |      |      |      | 380   |
| MASSIE       | 599 | 19   |      |      |      |      |      | 19    |
| MC CARROLL   | 600 | 100  |      |      |      |      |      | 100   |
| MC CARROLL   |     |      |      |      |      |      |      |       |
| NO.2         | 601 |      | 10   |      |      | 70   |      | 80    |
| MECITOS      | 604 | 300  | 701  |      |      | 599  |      | 1600  |
| MILL         | 605 | 348  |      |      |      |      |      | 348   |
| NORTH        |     |      |      |      |      |      |      |       |
| EASTERN      | 609 | 1912 | 168  |      |      |      |      | 2080  |
| OVERFLO      | 611 | 320  |      |      |      |      |      | 320   |
| PUNCHE       | 615 | 540  |      |      |      |      |      | 540   |
| RICHFIELD    | 616 | 80   | 1737 |      | 537  | 1461 |      | 3815  |
| RINCONES     | 618 | 788  |      |      |      |      |      | 788   |
| ROMERO       | 619 | 2238 | 3287 | 2639 | 6459 |      | 1073 | 15696 |
| SABINE       |     |      |      |      |      |      |      |       |
| SCHOOL       | 620 | 320  |      |      |      |      |      | 320   |
| SALAZAR      | 621 | 386  |      |      | 20   |      |      | 406   |
| SAN CARLOS   | 622 | 80   |      |      |      |      |      | 80    |
| SAN JUAN     |     |      |      |      |      |      |      |       |
| SAN RAFAEL   | 624 | 498  | 558  |      |      |      |      | 1056  |
| SAN RAFAEL   |     |      |      |      |      |      |      |       |
| CONEJOS      | 625 | 688  | 112  |      |      |      |      | 800   |
| SANCHEZ      | 626 | 110  | 157  |      |      |      | 2    | 269   |
| SANFORD      | 627 | 845  | 1098 |      | 460  |      |      | 2403  |
| SANTIAGO     | 629 | 303  | 97   |      |      |      |      | 400   |
| SELEDONIA    |     |      |      |      |      |      |      |       |
| VALDEZ       | 630 | 4167 | 292  | 101  |      |      |      | 4560  |
| SERVIETTA    | 631 | 832  | 124  |      |      |      |      | 956   |
| SINECERO     | 632 | 739  | 472  |      |      |      |      | 1211  |
| SISNEROS     | 633 |      |      |      |      | 240  |      | 240   |

|                 |     |       |       |      |       |      |       |
|-----------------|-----|-------|-------|------|-------|------|-------|
| SMITH BROS      | 634 | 37    | 153   |      |       |      | 190   |
| STAR            | 635 |       |       |      | 194   |      | 194   |
| STOVER          | 636 | 360   |       |      |       |      | 360   |
| TAOS VALLEY     | 639 | 160   |       |      |       |      | 160   |
| TEODORO 2       | 641 | 325   |       |      |       |      | 325   |
| TROGILLO        | 644 | 181   |       |      |       | 77   | 258   |
| VEGA            | 646 | 295   | 76    | 29   |       |      | 400   |
| WILLIAM JACKSON | 659 | 40    |       |      |       |      | 40    |
| WILLIAM STEWART | 651 | 549   | 41    |      | 550   |      | 1140  |
| TOTAL ACRES     |     | 38447 | 20377 | 8247 | 16747 | 1688 | 85506 |

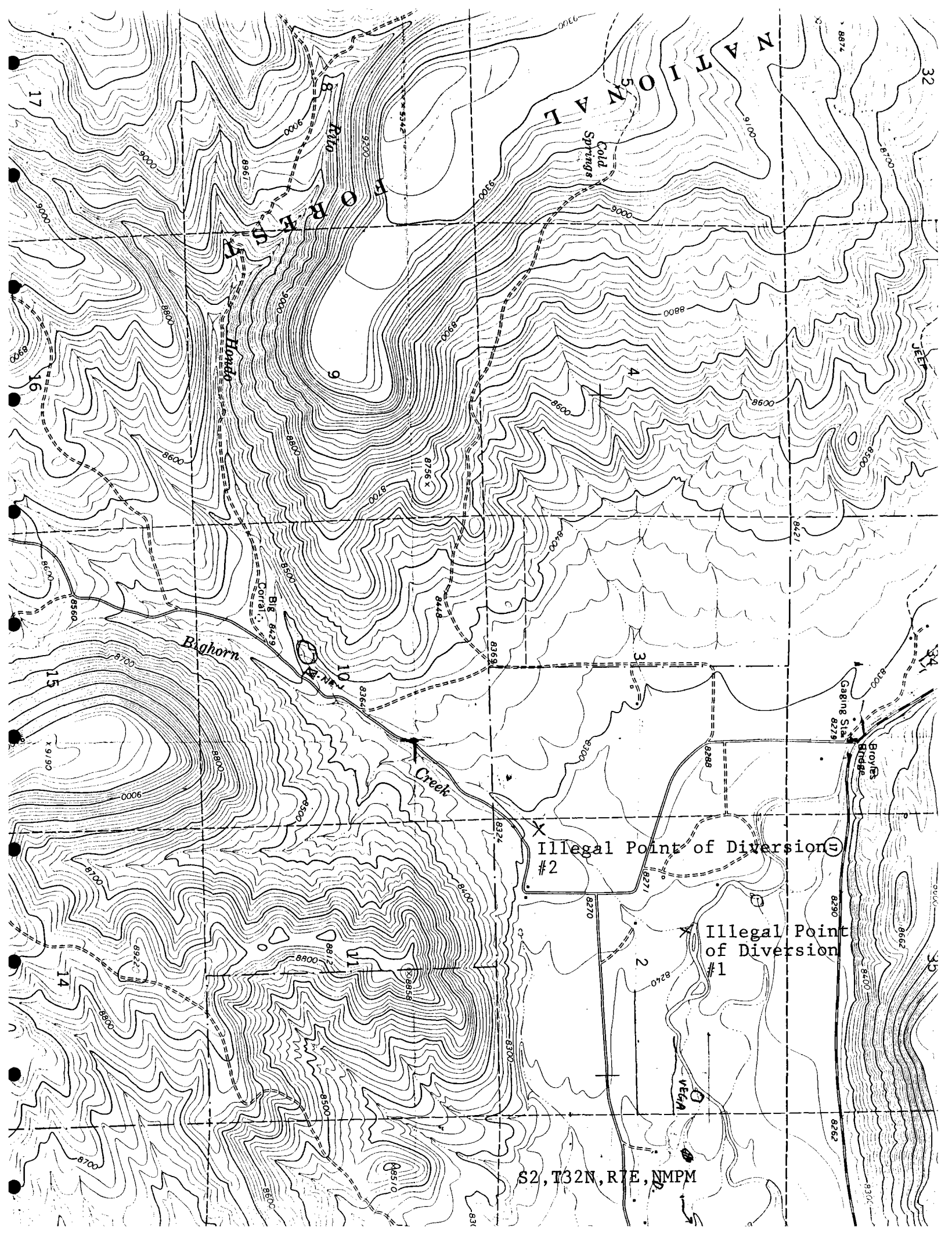
TOTAL IRRIGATED GRASS INCLUDES 350 ACRES OF CRP  
 MANASSA 20 ACRES  
 ROMERO 330 ACRES

ACRES LISTED UNDER POTATOES, MIXED FEED, BEANS OR FALLOW ARE AS FOLLOWS:

| DITCH SYS.  | NO.    | MIX FEED | POTATOES | FALLOW | CRP GRASS | BEANS | TOTAL |
|-------------|--------|----------|----------|--------|-----------|-------|-------|
| ANCON       | ID.502 |          |          | 7      |           |       | 7     |
| ELLEDGES    | ID.540 | 80       |          |        |           |       | 80    |
| LOBATO      |        |          |          |        |           |       |       |
| CORDOVA     | ID.581 |          |          | 254    |           |       | 254   |
| MANASSA     | ID.593 | 73       | 66       | 29     | 27        |       | 195   |
| ROMERO      | ID.619 | 102      | 773      |        | 198       |       | 1073  |
| SANCHEZ     | ID.626 |          |          |        |           | 2     | 2     |
| TROGILLO    | ID.644 | 77       |          |        |           |       | 77    |
| TOTAL ACRES |        | 332      | 839      | 290    | 225       | 2     | 1688  |

PERCENTAGE OF TOTAL ACRES ARE:

45 % MEADOW GRASS  
 24 % ALFALFA  
 10 % SMALL GRAIN  
 19 % PASTURE  
 2 % BEAN, FALLOW, OR POTATOES



Illegal Point of Diversion #2

Illegal Point of Diversion #1

S2, T32N, R1E, NMPM

ROBERT W. OGBURN  
JUDGE OF THE WATER COURT

~~STEPHANIE W. AXENICK  
WATER REFEREE~~

CAROL S. REDDING  
CLERK OF THE WATER COURT

# WATER COURT-DIVISION 3

ALAMOSA COUNTY COURTHOUSE • ALAMOSA, COLORADO 81101

(719) ~~803~~ 589-9107

January 6, 1989

Mr. Steven Vandiver  
Division Engineer  
422 Fourth Street  
P. O. Box 269  
Alamosa, CO 81101

Dear Steve:

Enclosed please find information concerning the end of the calendar year.

Number of applications received from January 1, 1988, through December 31, 1988: 88CW1 through 88CW35.

Types of claims received from January 1, 1988, through December 31, 1988:

- 161 Wells
- 22 Ditches
- 5 springs
- 4 Reservoirs
- 1 gravel pit
- 1 Conveyance Channel
- 1 Creek

---

195 TOTAL

Number of cases terminated from January 1, 1988, through December 31, 1988: 86.

Structures terminated from January 1, 1987, through December 31, 1987:

- 1104 Wells
- 69 Ditches
- 8 Ponds
- 1 River
- 80 Springs
- 14 Reservoirs

CONTINUED

Mr. Steven Vandiver  
January 6, 1989  
Page 2

CONTINUED - Structure terminated from January 1, 1988, through  
December 31, 1988:

15 surface rights  
3 lakes  
1 Pipeline  
7 Structures  
3 Canals  
2 Creeks  
1 Conveyance Channel  
1 Ditch with 2 diversions (3)  
1 Ditch with 3 priorities (3)  
2 Creeks with 3 diversions (5)

---

1,319 TOTAL

The number of cases pending as of December 31, 1988, is  
approximately 75.

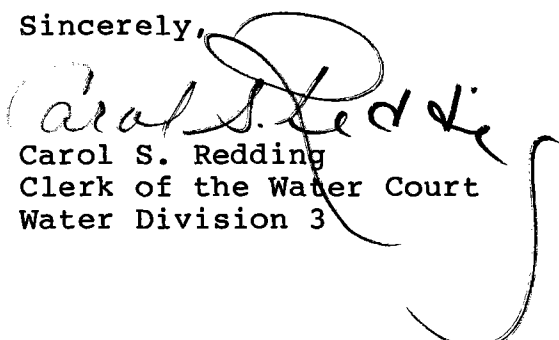
I am enclosing the following additional information:

1. Report on cases by docket number, applicant, type of case, number of claims and type of claims.
2. Report on cases showing type of cases, case number and applicants.
3. Report for yearly statistics -- 1988.
4. Report for all cases, statistics through 1988.
5. Revised Report, 3 year average for all water courts.
6. Revised Report, 4 year average for all water courts.
7. Revised Report, 5 year average for all water courts.
8. Revised Report, Statistics for all Water Courts from FY 1969-70 through FY 1987-88.

Mr. Steven Vandiver  
January 6, 1989  
Page 3

If you have any questions concerning the tabulations and enclosures, please give me a call.

Sincerely,



Carol S. Redding  
Clerk of the Water Court  
Water Division 3

csr

Enclosures

xc: file  
Judge Robert W. Ogburn  
Pat Stanford

REPORT 1.

1988 FILINGS IN WATER DIVISION 3

prepared by: Carol Redding  
01-06-1988

| Case No. | Applicant                                      | Type of Case | Number of Claims | Types of Claims                        |
|----------|------------------------------------------------|--------------|------------------|----------------------------------------|
| 880001   | Kerner, James B.                               | WCHNG        | 2                | wells (2)                              |
| 880002   | Hicks, Brian C.                                | WSURF        | 1                | ditch (1)                              |
| 880003   | Spearmen Ranch                                 | WSURF        | 9                | ditches (9)                            |
| 880004   | McCormick, John W.                             | WSURF        | 1                | ditch (1)                              |
| 880005   | Lambert, Edward B.                             | WSURF        | 1                | ditch (1)                              |
| 880006   | Jasper Properties, Inc.                        | WDILF        | 1                | spring (1)                             |
| 880007   | Adkins, Robert G. & Catherine C.               | WSURF        | 2                | ditches (2)                            |
| 880008   | Seitz, Neil F. & Teresa M.                     | WCHNG        | 4                | ditch (1) and springs (3)              |
| 880009   | Hicks, Brian C.                                | WSURF        | 1                | ditch (1)                              |
| 880010   | Hicks, Brian                                   | WOTHR        | 1                | reservoir (1)                          |
| 880011   | Eastdale Mutual Ditch and Reservoir Company    | WDILF        | 1                | ditch (1)                              |
| 880012   | Eagles, Virgil J.                              | WDILF        | 1                | well (1)                               |
| 880013   | Monte Vista, City of, Colorado                 | WCHNG        | 5                | wells (5)                              |
| 880014   | Rakhra Mushroom Farm                           | WCHNG        | 3                | wells (2) and gravel pit (1)           |
| 880015   | Travelers Insurance Company                    | WDILF        | 3                | wells (3)                              |
| 880016   | Rio Grande Water Conservation District         | WDILF        | 130              | wells (129) and conveyance channel (1) |
| 880017   | Kerner, Robert                                 | WOTHR        | 1                | reservoir (1)                          |
| 880018   | United States of America                       | WCHNG        | 1                | well (1)                               |
| 880019   | Deacon, Max I. & Karen A.                      | WCHNG        | 1                | well (1)                               |
| 880020   | White Mountain, Inc.                           | WDILF        | 1                | creek (1)                              |
| 880021   | Porter, Richard F. & Hill, Vernon & Nancy      | WDILF        | 1                | well (1)                               |
| 880022   | Sowards, Dale & Orva vs. Sowards, Elwin & Lena | WINJC        | 1                | well (1)                               |
| 880023   | Colorado, Dept. of Natural Resources, DOW      | WDILF        | 1                | reservoir (1)                          |
| 880024   | Robins, Gary                                   | WDILF        | 1                | spring (1)                             |
| 880025   | Prudential Insurance Co.                       | WCHNG        | 2                | wells (2)                              |
| 880026   | Riterson, Michael D.                           | WDILF        | 1                | well (1)                               |
| 880027   | San Juan Art Center (Artes Del Valle)          | WSURF        | 1                | ditch (1)                              |
| 880028   | American Water Development, Inc.               | WDILF        | 1                | well (1)                               |
| 880029   | Bigelow, D. Boyd                               | WCHNG        | 4                | wells (4)                              |
| 880030   | Musselman, Charles D. & Nancy J.               | WDILF        | 1                | well (1)                               |
| 880031   | Wagner Ranch, Ltd.                             | WCHNG        | 4                | ditches (4)                            |
| 880032   | Mason, James A. & Harriett L.                  | WUNDR        | 1                | well (1)                               |
| 880033   | Reed, Larry G.                                 | WUNDR        | 1                | well (1)                               |
| 880034   | Myers, Robert                                  | WCHNG        | 4                | wells (4)                              |
| 880035   | Colorado Division of Wildlife                  | WSTOR        | 1                | Take (1)                               |

-----  
195 (Total Claims Filled)



| <u>Type of Case</u> | <u>Case No.</u> | <u>Applicant</u>                               |
|---------------------|-----------------|------------------------------------------------|
| WCHNG               | 880001          | Kernen, James B.                               |
|                     | 880008          | Seitz, Neil F. & Teresa M.                     |
|                     | 880013          | Monte Vista, City of, Colorado                 |
|                     | 880014          | Rakhra Mushroom Farm                           |
|                     | 880018          | United States of America                       |
|                     | 880019          | Deacon, Max I. & Karen A.                      |
|                     | 880025          | Prudential Insurance Co.                       |
|                     | 880029          | Bigelow, D. Boyd                               |
|                     | 880031          | Wagner Ranch, Ltd.                             |
|                     | 880034          | Myers, Robert                                  |
|                     | -----           |                                                |
|                     | 10 (Totals)     |                                                |
| WDILF               | 880006          | Jasper Properties, Inc.                        |
|                     | 880011          | Eastdale Mutual Ditch and Reservoir Company    |
|                     | 880012          | Eagles, Virgil J.                              |
|                     | 880015          | Travelers Insurance Company                    |
|                     | 880016          | Rio Grande Water Conservation District         |
|                     | 880020          | White Mountain, Inc.                           |
|                     | 880021          | Porter, Richard F. & Hill, Vernon & Nancy      |
|                     | 880023          | Colorado, Dept. of Natural Resources, DOW      |
|                     | 880024          | Robins, Gary                                   |
|                     | 880026          | Rierson, Michael D.                            |
|                     | 880028          | American Water Development, Inc.               |
|                     | 880030          | Musselman, Charles D. & Nancy J.               |
|                     | -----           |                                                |
|                     | 12 (Totals)     |                                                |
| WINJC               | 880022          | Sowards, Dale & Orva vs. Sowards, Elwin & Lena |
|                     | -----           |                                                |
|                     | 1 (Totals)      |                                                |
| WOTHR               | 880010          | Hicks, Brian                                   |
|                     | 880017          | Kernen, Robert                                 |
|                     | -----           |                                                |
|                     | 2 (Totals)      |                                                |
| WSTOR               | 880035          | Colorado Division of Wildlife                  |
|                     | -----           |                                                |
|                     | 1 (Totals)      |                                                |
| WSURF               | 880002          | Hicks, Brian C.                                |
|                     | 880003          | Spearman Ranch                                 |
|                     | 880004          | McCormick, John W.                             |
|                     | 880005          | Lambert, Edward B.                             |
|                     | 880007          | Adkins, Robert G. & Catherine C.               |
|                     | 880009          | Hicks, Brian C.                                |
|                     | 880027          | San Juan Art Center (Artes Del Valle)          |
|                     | -----           |                                                |
|                     | 7 (Totals)      |                                                |
| WUNDR               | 880032          | Mason, James A. & Harriett L.                  |
|                     | 880033          | Reed, Larry G.                                 |
|                     | -----           |                                                |
|                     | 2 (Totals)      |                                                |

-----  
35 Total Cases for 1988

## KEY:

WCHNG - Water Change  
 WDILF - Findings of Diligence--Quadrennial/ to Make Absolute  
 WINJC - Injunction  
 WOTHR - Other  
 WSTOR - Water Storage  
 WSURF - Water Surface  
 WUNDR - Water Underground

prepared by: Carol Redding  
 01-06-1988

REPORT 4.

WATER DIVISION 3  
 ALAMOSA COUNTY COURTHOUSE  
 ALAMOSA, COLORADO 81101

Robert W. Ogburn  
 JUDGE OF THE WATER COURT

CARLA R. SHAWCROFT  
 CLERK OF THE WATER COURT

| TOTALS   | Cases Filed | Number of Wells | Number of Structures | Quadrennials                                   | Cases Terminated | Structures Terminated                                                                                               |
|----------|-------------|-----------------|----------------------|------------------------------------------------|------------------|---------------------------------------------------------------------------------------------------------------------|
| 12-31-76 | 3675        | 12343           | 385                  | 48                                             | 3104             | 10,050 Wells<br>201 Other                                                                                           |
| 12-31-77 | 3840        | 12542           | 438                  | 59                                             | 3300             | 10,519 Wells<br>277 Others                                                                                          |
| 12-31-78 | 3998        | 13863           | 520                  | 87                                             | 3465             | 11,572 wells<br>300 others<br>(not included are structures<br>in the 73 cases re-opened and<br>135 cases re-closed) |
| 12-31-79 | 4097        | 14069           | 550                  | 89                                             | 3781             | 12,220 Wells<br>357 Others<br>(not included are structures<br>in the 84 cases re-opened &<br>145 cases re-closed)   |
| 12-31-80 | 4229        | 15430           | 594                  | included in #of<br>wells & other<br>structures | 3921             | 12,715 Wells<br>402 others<br>(not included are structures<br>in the 179 cases re-opened &<br>242 cases re-closed)  |
| 12-31-81 | 4427        | 15804           | 2106                 | "                                              | 4065             | 14002 wells, 445 others,<br>(not included are structures<br>in the 3 cases re-opened &<br>3 cases re-closed)        |
| 12-31-82 | 4672        | 17475           | 3081                 | "                                              | 4185             | 14,161 wells, 523 others<br>(does not include any<br>structures in any re-opened &<br>re-closed cases)              |

**WATER DIVISION 3**  
 ALAMOSA COUNTY COURTHOUSE  
 ALAMOSA, COLORADO 81101

ROBERT W. OGBURN  
 JUDGE OF THE WATER COURT

Carol S. Redding  
 CLERK OF THE WATER COURT

| YEAR     | Cases Filed | Number of Wells | Number Structures<br>(includes quadrennials) | Cases Terminated                                                          | Structures Terminated                                                                              |
|----------|-------------|-----------------|----------------------------------------------|---------------------------------------------------------------------------|----------------------------------------------------------------------------------------------------|
| TOTALS   |             |                 |                                              |                                                                           |                                                                                                    |
| 12-31-83 | 4768        | 18861           | 3145                                         | 4370 (this does not include reopened & reterminated cases and structures) | 16,041 wells and 600 others (this does not include reopened and reterminated cases and structures) |
| 12-31-84 | 4945        | 21581           | 3368                                         | 4534 (this does not include reopened & reterminated cases and structures) | 17,034 wells & 733 others (this does not include reopened and reterminated cases & structures)     |
| 12-31-85 | 5023        | 21726           | 3475                                         | 4726 (this does not include reopened & reterminated cases & structures)   | 19,988 wells & 849 others (this does not include reopened and reterminated cases & structures)     |
| 12-31-86 | 5069        | 22554           | 3534                                         | 4881 (this does not include reopened & reterminated cases and structures) | 20803 wells & 1110 others (this does not include reopened & reterminated cases & structures)       |
| 12-31-87 | 5127        | 22686           | 3629                                         | 5001 (this does not include reopened & reterminated cases & structures)   | 21,592 wells & 1,952 others (this does not include reopened & reterminated cases & structures)     |
| 12-31-88 | 5162        | 22847           | 3663                                         | 5087 (this does not include reopened & reterminated cases and structures) | 22696 wells and 2167 others (this does not include reopened and reterminated cases and structures) |

# WATER COURT-DIVISION 3

ALAMOSA COUNTY COURTHOUSE • ALAMOSA, COLORADO 81101  
(303) 588-9107

CAROL S. REDDING  
CLERK OF THE WATER COURT

| YEAR          | CASES FILED | NUMBER OF WELLS | NUMBER STRUCTURES                                                                          | CASES TERMINATED | STRUCTURES TERMINATED                                                                                                                                                                                                                                                                                    |
|---------------|-------------|-----------------|--------------------------------------------------------------------------------------------|------------------|----------------------------------------------------------------------------------------------------------------------------------------------------------------------------------------------------------------------------------------------------------------------------------------------------------|
| 1988          |             |                 |                                                                                            |                  |                                                                                                                                                                                                                                                                                                          |
| January       | 2           | 2               | 1 ditch                                                                                    | 10               | 270 wells, 25 ditches, 1 pond, 1 river, 1 spring & 2 reservoirs. Total Count: 300                                                                                                                                                                                                                        |
| February      | 8           | 0               | 15 ditches, 4 springs & 1 reservoir                                                        | 17               | 501 wells, 15 surface rights, 3 lakes, 1 reservoir, 1 ditch & 1 ditch w/2 diversions (3)<br>Total Count: 524                                                                                                                                                                                             |
| March         | 4           | 8               | 1 ditch & 1 gravel pit                                                                     | 02               | 1 well & 1 ditch                                                                                                                                                                                                                                                                                         |
| April         | 2           | 132             | 1 conveyance channel                                                                       | 09               | 23 wells, 3 ditches & 1 pipeline                                                                                                                                                                                                                                                                         |
| May           | 2           | 1               | 1 reservoir                                                                                | 14               | 111 Wells, 7 reservoirs, 1 creek, 29 ditches, 72 springs, 3 ponds, and 7 structures. Total: 230                                                                                                                                                                                                          |
| June          | 3           | 2               | 1 creek                                                                                    | 02               | 3 canals, 4 ditches & 1 ditch w/3 priorities<br>Total Count: 10                                                                                                                                                                                                                                          |
| July          | 3           | 1               | 1 reservoir & 1 spring                                                                     | 06               | 8 wells, 2 ditches & 2 reservoirs<br>Total Count: 12)                                                                                                                                                                                                                                                    |
| August        | 2           | 3               | --                                                                                         | 05               | 44 wells, 2 springs, 1 reservoir, and 2 creeks w/3 diversions (5)<br>Total Count: 52                                                                                                                                                                                                                     |
| September     | 1           | -               | 1 ditch                                                                                    | 7                | 5 wells, 2 ditches & 2 springs                                                                                                                                                                                                                                                                           |
| October       | 1           | 1               | --                                                                                         | 05               | 2 wells, 4 ponds, 1 reservoir & 1 ditch (total count: 8)                                                                                                                                                                                                                                                 |
| November      | 3           | 5               | 4                                                                                          | 02               | 1 spring                                                                                                                                                                                                                                                                                                 |
| December      | 4           | 6               | 1 reservoir                                                                                | 07               | 139 wells, 1 conveyance channel, 1 ditch, 1 creek & 2 springs<br>(total count: 144)                                                                                                                                                                                                                      |
| <b>TOTALS</b> | <b>35</b>   | <b>161</b>      | <b>22 ditches, 5 springs, 4 reservoirs, 1 gravel pit, 1 conveyance channel and 1 creek</b> | <b>86</b>        | <b>1104 wells, 69 ditches, 8 ponds, 1 river, 80 springs, 14 reservoirs, 15 surface rights, 3 lakes 1 pipeline, 7 structures, 3 canals, 2 creeks, 1 conveyance channel, 1 ditch with 2 diversions (3), 1 ditch with 3 priorities (3), and 2 creeks with 3 diversions (5)</b><br><b>TOTAL COUNT: 1,319</b> |

58

Cases Filed 5158. +  
02 4. +  
↳ 3162. +

22841. +  
6. +

02  
Approx. # of wells filed 22847. +  
↗

- 3162. +
- 5,001. + pr. yrs.
- 10. Jan.
- 17. Feb.
- 2. Mar.
- 9. Apr.
- 14. May
- 2. June
- 6. July
- 5. Aug.
- 7. Sept.
- 5. Oct.
- 2. Nov.
- 7. Dec.

14  
Cases pending 75. +  
→

- 22847. +
- 21,592. + pr. yrs.
- 270. Jan.
- 501. Feb.
- 1. Mar.
- 23. Apr.
- 111. May
- 0. June
- 8. July
- 44. Aug.
- 5. Sept.
- 2. Oct.
- 0. Nov.
- 139. Dec.

14  
Approx. # of wells pending 151. +  
↗