

I would like to submit our report for the year 1975.

Some of the diversion figures are estimates, due to the death of one of our Commissioners, Jack McDonough. The report includes the records, prepared by our Hydro Section of the 30 stream gages located in Division 2 for the year 1975. Some of these figures are considered preliminary, but we anticipate no significant changes in the totals.

Our Hydro Section is comprised of three men. Two Engineers and one Technician. Their time is about equally divided between the collection, compilation of stream flow data and what could be considered administrative duties; such as the checking of the rating on ditch measuring devices and miscellaneous measurements in the administration of the various streams. In 1975 we made one complete investigation of the Purgatoire River, which resulted in my issuing an order that may result in a court case to determine what a futile call is, they also participated in a massive test of the main Arkansas, to determine the transmission loss, that could affect the price of Fryingpan Project Water.

The Fry-Ark is a U.S.B.R. project for transmountain diversion that already is funded over one-half billion, this project is one that is under heavy fire from both the G.A.O. and environmental groups, hearings are under way in Washington and the Water Court in Colorado to determine its future. The major features on the Eastern Slope are complete, with the remainder being the collection system on the Western Slope. The largest reservoir of the system is on the Arkansas at Pueblo, the location and the relation this feature has to water rights requires us to monitor the inflow during the summer at least every 6 hours, and making releases or cuts accordingly.

This new feature, and the associated complications of other reservoir exchanges, requires almost the entire attention of one man. We account for the contents of each of the major reservoirs on a daily basis and design reservoir runs that have to travel sometimes in excess of 300 miles. We are fortunate to have a man of this capability, Jim Kasic, Acting Assistant Division Engineer.

We are having increasing dialogue with the various Land Use and County Zoning Commissions and have been invited to speak concerning the water rights and proposed plans. I can see no end to this sort of thing at our level and realize there must be a tremendous volume of consideration when it gets to Hal Simpson or Jeri, if we can add anything, we are at your service.

Our position as relates to Ground Water and its administration, is still up in the air. We completed the hearings on the protests to the proposed rules and regulations in October, after 18 days trial time, and are awaiting the record and then the filing of briefs, it is our earnest hope some conclusion can be had in this matter before next irrigation season. The question of what regulation should be imposed on the withdrawal of Ground Water from the tributary alluvium for irrigation goes back to H.B. 1066, enacted in 1965, and has been in almost constant turmoil since, the litigation has now dragged on so long that there is being felt an adverse effect on some property values, and, though not readily apparant among ditch companies some public feeling (they are getting mad) we have issued several formal orders to some large irrigators to comply with rules and regulations, and, have not yet generated an injunction case, over 100 owners of over 1000 wells have been contacted and have agreed to either a manner of operation or exchange plan that would comply with the rules and regulations. We were

fortunate to have join Division 2 staff in October a second Assistant Division Engineer, Ken Cooper; whose main thrust next year will be enforcement of whatever rules and regulations the court gives us, and to bring some order to the domestic or 1042 well situation, of which we know there are a number of violations.

The Water Court is one of the major consumers of Division time. I estimate we expend about 1/3 of the Division Engineers time either in attending hearings or preparing for them. The referees of which there are two, are about evenly split between being willing to co-operate and listen to and incorporate within their decrees conditions of well permits and comments of the Division Engineer. The attitude of the Water Court toward our office has been markedly improved during the last year. Our office has entered motions to uphold rulings of the Referee, none have been litigated yet, but, we have every confidence in our counsel, if they are. This one thing will in my estimation do more for our image than anything else, the Referees have no other ready way to defend their decisions, and like the rest of us, like to have their decisions upheld.

INTRODUCTORY STATEMENT

ANNUAL DIVISION ENGINEERS REPORT
IRRIGATION DIVISION NO. 2

1975

IRRIGATION DIVISION NUMBER 2 CONSISTS OF ALL LANDS IRRIGATED FROM DITCHES AND CANALS DIVERTING WATER FROM THE ARKANSAS RIVER AND ITS TRIBUTARIES. THE DIVISION IS COMPOSED OF ELEVEN WATER DISTRICTS (10,11,12,13,14,15,16,17,18,19,66 and 67) COMPRISING THE COUNTIES OF EL PASO, CHAFFEE, LAKE, FREMONT, CUSTER, PUEBLO, PARK, LAS ANIMAS, TELLER, CROWLEY, OTERO, BENT, PROWERS, BACA AND KIOWA.

THE AREA THAT IS EMCOMPASSED BY IRRIGATION DIVISION NUMBER 2 MAY BE BEST DESCRIBED BY THE FOLLOWING SUMMARIZED TABLES.

TABLE OF CONTENTS

Comments..... 1-2

Division 2 by Counties..... 3-18

County Summaries 19-20

Basin Yield - Commentary 21

Basin Yield - Drainage in Acre Feet..... 22

Direct Flow Diversions Water Districts..... 23

Direct Flow Diversions - Municipalities..... 24

Direct Flow Diversions - Transmountain 25

Transmountain Diversions - Graphs..... 26-34

Summary - Precipitation, Floods, Dams, Div. 2..... 35

Water Content - Snow Depth..... 36

Precipitation..... 37

Precipitation.- Pueblo, Colorado..... 38

Wind - Humidity Comparison, Pueblo, Colorado..... 39

Listing of Major Reservoirs in Div. 2..... 40-41

Reservoir Comparison Acre Feet, Div.2..... 42-44

Livestock Water Tanks..... 45

Tabulations - Water Rights..... 46-50

Principal Aquifer, Arkansas River Valley, Pueblo,
Colorado to Kansas State Line..... 51-52

Withdrawal in Acre Feet Per Year..... 53

Well Summary - Div. 2..... 54

Arkansas River Compact..... 55

Mileage Total Water Districts, Div. 2..... 56

TABLE OF CONTENTS

Personnel Roster - Div. 2..... 57-59

Officers and Directors of Southeastern Colorado
Water Conservancy District..... 60

Water Related Organizations in Div. 2..... 61-62

DIVISION ENGINEER COMMENTS

The winter was generally dry in the lower regions, with a near normal snow pack, the spring remained generally cool and dry, which brought the snow off fairly slow which gave the ditches on the main stem a good run; with the tributaries generally being short. The summer was marked with a general shortage on the middle of the division and some quite intense thunder storms near the Lamar area which caused some local flooding of culverts and secondary roads. No major floods were reported; although some instantaneous peaks of note were recorded above Pueblo Reservoir. The year is being closed out with some major snow storms again in the Lamar area, the cattle losses were reported as moderate.

The Fry-Ark Project, due mainly to the decline in the economy and efforts to stimulate it the government funded the project above expectations and construction is ahead of schedule, Pueblo Reservoir, the largest of the group, has been completed and the reservoir is capable of storing water, the North Side Recreation area was opened to the Public July 1, 1975 and has been very popular.

The protested ammendment to the Rules and Regulations for ground water pumping was heard by Division Two Water Court, and is now awaiting decision, after final briefs. There does not appear to be any wide spread concern among irrigators over the out come. Rules and regulations for 1973 were enforced during 1975, with a total of four formal orders to irrigators. To conform to Rules, over 100 contacts were made with good compliance and a minimum of bitching. We expect a more vigerous enforcement program next year, due to Ken Cooper, a new man in Ground Water.

It appears that approximately 30% of the division time will be spent in court, resolving administration problems.

Zoneing and land use is becoming more dependent on the availability of water. There have been several meetings of the Division Engineer and the zoneing/planning committies to discuss water needs and the availability and the impact on zoneing/planning.

The Hydrographic Section maintained 22 gaging stations for the year, monitered 10 transmountain diversions during the summer month. In addition to normal scheduled maintenance, at the stations, over 630 stream gaging measurements were made of which 15 measurements were made during the Arkansas River transportation losses study in September 1975. An additional 33 measurements were made during a travel time and transportation losses study of the Purgatoire River between Trinidad and Las Animas during June, July. Twenty measurements of mincellaneous canals and ditches were made when requested by the water commissioners. Two new gaging stations were constructed and responsibility for another was picked up from the Geological Survey at the beginning of the year. The Purgatoire River study was conducted in an attempt to resolve the conflict between the Highland Irrigation Canal water rights and the junior water rights in the Trinidad Area. The conclusions were than, water can be transported to the Highland Canal, but that approximately 100 c.f.s. is required in the Trinidad

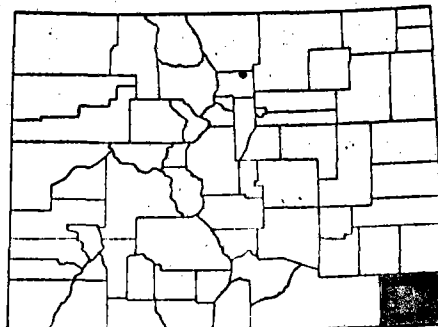
area to fill the 16.7 c.f.s. right at the Highland Canal.

The Homestake Tunnel cave-in problems were repaired sufficiently during the off season to allow the transfer of water during the summer months. The tunnel was again closed at the end of September for a period of approximately 1 1/2 years for extensive repair work.

IRRIGATION DIVISION II

BACA COUNTY

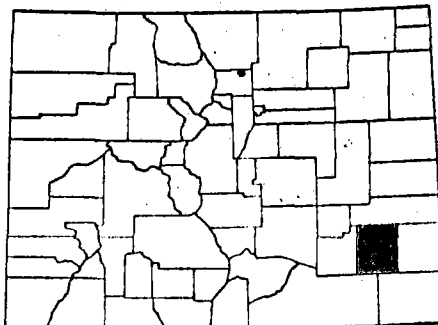
<u>MAJOR CITY</u>	Springfield
<u>1970 POPULATION</u>	5,516
<u>URBAN POPULATION</u>	No city over 2,500
<u>RURAL POPULATION</u>	5,516
<u>COUNTY AREA</u>	2,565 Sq. Miles
<u>TERRAIN</u>	Plains
<u>ELEVATION (MAJOR CITY)</u>	4,356
<u>MAJOR STREAM</u>	Carrizo
<u>MAJOR TRIBUTARY</u>	None
<u>MAJOR WATER USE</u>	Irrigation
<u>IRRIGATED ACRES</u>	56,910
<u>AVERAGE GROWING SEASON</u>	169 days
<u>ANNUAL MEAN TEMPERATURE</u>	52.20
<u>AVERAGE ANNUAL RAINFALL</u>	14.73 inches
<u>AVERAGE ANNUAL SNOWFALL</u>	27.7 inches
<u>MAJOR SOURCE INCOME</u>	Agriculture
<u>NUMBER OF FARMS</u>	750
<u>WATER RESOURCE PROJECTS</u>	Underground Water
<u>LAND OWNERSHIP</u>	
PRIVATE	1,736,612 Acres
FEDERAL	205,500 Acres
STATE	42,928 Acres
COUNTY AND MUNICIPAL	86 Acres



IRRIGATION DIVISION II

BENT COUNTY

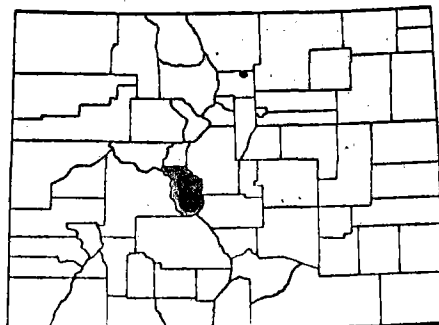
<u>MAJOR CITY</u>	Las Animas
<u>1970 POPULATION</u>	6,343
<u>URBAN POPULATION</u>	2,955
<u>RURAL POPULATION</u>	3,388
<u>COUNTY AREA</u>	1,517 Sq. Miles
<u>TERRAIN</u>	Plains
<u>ELEVATION (MAJOR CITY)</u>	3,901
<u>MAJOR STREAM</u>	Arkansas
<u>MAJOR TRIBUTARY</u>	Purgatoire
<u>MAJOR WATER USE</u>	Irrigation
<u>IRRIGATED ACRES</u>	45,292
<u>AVERAGE GROWING SEASON</u>	158 Days
<u>ANNUAL MEAN TEMPERATURE</u>	51.3
<u>AVERAGE ANNUAL RAINFALL</u>	12.25 inches
<u>AVERAGE ANNUAL SNOWFALL</u>	21.0 inches
<u>MAJOR SOURCE INCOME</u>	Agriculture
<u>NUMBER OF FARMS</u>	450
<u>WATER RESOURCE PROJECTS</u>	Frying-pan
<u>LAND OWNERSHIP</u>	
PRIVATE	939,722 Acres
FEDERAL	10,233 Acres
STATE	142,673 Acres
COUNTY AND MUNICIPAL	147 Acres



IRRIGATION DIVISION II

CHAFFEE COUNTY

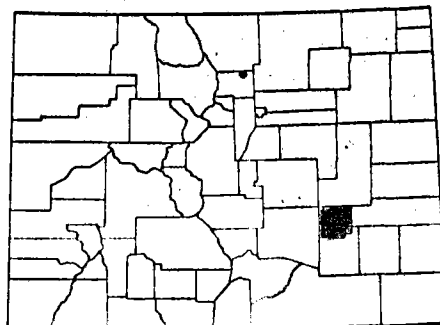
<u>MAJOR CITY</u>	Salida
<u>1970 POPULATION</u>	9,663
<u>URBAN POPULATION</u>	4,322
<u>RURAL POPULATION</u>	5,341
<u>COUNTY AREA</u>	1,039 Sq. Miles
<u>TERRAIN</u>	Mountainous
<u>ELEVATION (MAJOR CITY)</u>	7,036
<u>MAJOR STREAM</u>	Arkansas
<u>MAJOR TRIBUTARY</u>	So. Arkansas
<u>MAJOR WATER USE</u>	Irrigation
<u>IRRIGATED ACRES</u>	16,216
<u>AVERAGE GROWING SEASON</u>	112 Days
<u>ANNUAL MEAN TEMPERATURE</u>	46.3
<u>AVERAGE ANNUAL RAINFALL</u>	10.87 inches
<u>AVERAGE ANNUAL SNOWFALL</u>	46.2 inches
<u>MAJOR SOURCE INCOME</u>	Agriculture
<u>NUMBER OF FARMS</u>	170
<u>WATER RESOURCE PROJECTS</u>	Frying-pan
<u>LAND OWNERSHIP</u>	
PRIVATE	128,736 Acres
FEDERAL	502,651 Acres
STATE	20,103 Acres
COUNTY AND MUNICIPAL	3,511 Acres



IRRIGATION DIVISION II

CROWLEY COUNTY

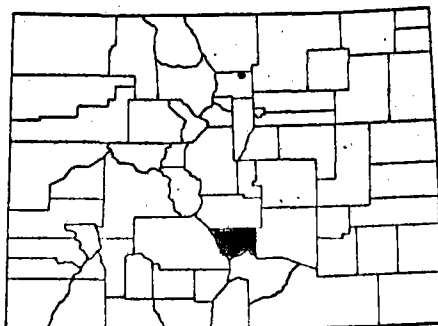
MAJOR CITY	Ordway
1970 POPULATION	2,947
URBAN POPULATION	No City over 2,500
RURAL POPULATION	2,947
COUNTY AREA	803 Sq. Miles
TERRAIN	Plains
ELEVATION (MAJOR CITY)	4,312
MAJOR STREAM	Horse Creek
MAJOR TRIBUTARY	None
MAJOR WATER USE	Irrigation
IRRIGATED ACRES	25,010
AVERAGE GROWING SEASON	162 days
ANNUAL MEAN TEMPERATURE	51.4
AVERAGE ANNUAL RAINFALL	12.31 Inches
AVERAGE ANNUAL SNOWFALL	21.2 Inches
MAJOR SOURCE INCOME	Agriculture
NUMBER OF FARMS	400
WATER RESOURCE PROJECTS	Frying-pan
LAND OWNERSHIP	
PRIVATE	531,034 Acres
FEDERAL	5,054 Acres
STATE	52,741 Acres
COUNTY AND MUNICIPAL	897 Acres



IRRIGATION DIVISION II

CUSTER COUNTY

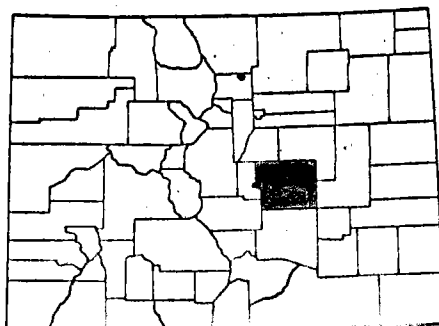
<u>MAJOR CITY</u>	Westcliffe
<u>1970 POPULATION</u>	1,028
<u>URBAN POPULATION</u>	No City over 2,500
<u>RURAL POPULATION</u>	1,028
<u>COUNTY AREA</u>	737 Sq. Miles
<u>TERRAIN</u>	Mountain Valley
<u>ELEVATION (MAJOR CITY)</u>	7,888
<u>MAJOR STREAM</u>	Grape
<u>MAJOR TRIBUTARY</u>	Texas
<u>MAJOR WATER USE</u>	Irrigation
<u>IRRIGATED ACRES</u>	15,930
<u>AVERAGE GROWING SEASON</u>	86 days
<u>ANNUAL MEAN TEMPERATURE</u>	43.7
<u>AVERAGE ANNUAL RAINFALL</u>	16.47 inches
<u>AVERAGE ANNUAL SNOWFALL</u>	88.1 inches
<u>MAJOR SOURCE INCOME</u>	Agriculture
<u>NUMBER OF FARMS</u>	180
<u>WATER RESOURCE PROJECTS</u>	U.S.G.S. Underground Study
<u>LAND OWNERSHIP</u>	
PRIVATE	298,001 Acres
FEDERAL	186,695 Acres
STATE	11,989 Acres
COUNTY AND MUNICIPAL	452 Acres



IRRIGATION DIVISION II

EL PASO COUNTY

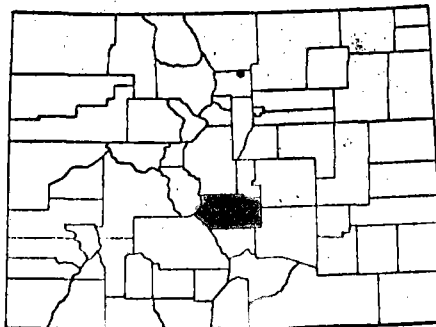
<u>MAJOR CITY</u>	<u>Colorado Springs</u>
<u>1970 POPULATION</u>	<u>229,113</u>
<u>URBAN POPULATION</u>	<u>200,145</u>
<u>RURAL POPULATION</u>	<u>27,968</u>
<u>COUNTY AREA</u>	<u>2,158 Sq. Miles</u>
<u>TERRAIN</u>	<u>Foothills</u>
<u>ELEVATION (MAJOR CITY)</u>	<u>6,012</u>
<u>MAJOR STREAM</u>	<u>Fountain</u>
<u>MAJOR TRIBUTARY</u>	<u>Monument</u>
<u>MAJOR WATER USE</u>	<u>Commercial & Irrig.</u>
<u>IRRIGATED ACRES</u>	<u>13,630</u>
<u>AVERAGE GROWING SEASON</u>	<u>148 days</u>
<u>ANNUAL MEAN TEMPERATURE</u>	<u>48.0</u>
<u>AVERAGE ANNUAL RAINFALL</u>	<u>14.49 inches</u>
<u>AVERAGE ANNUAL SNOWFALL</u>	<u>35.0 inches</u>
<u>MAJOR SOURCE INCOME</u>	<u>Military, Manufacturing</u>
<u>NUMBER OF FARMS</u>	<u>750</u>
<u>WATER RESOURCE PROJECTS</u>	<u>Blue River, Frying-Pan; Homestake</u>
<u>LAND OWNERSHIP</u>	
PRIVATE	981,504 Acres
FEDERAL	187,866 Acres
STATE	192,482 Acres
COUNTY AND MUNICIPAL	14,839 Acres



IRRIGATION DIVISION II

FREMONT COUNTY

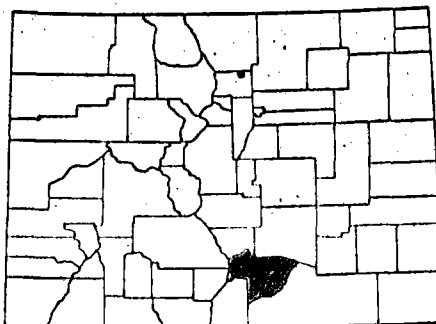
<u>MAJOR CITY</u>	Canon City
<u>1970 POPULATION</u>	20,220
<u>URBAN POPULATION</u>	11,917
<u>RURAL POPULATION</u>	8,303
<u>COUNTY AREA</u>	1,562 Sq. Miles
<u>TERRAIN</u>	Foothills
<u>ELEVATION (MAJOR CITY)</u>	5,332
<u>MAJOR STREAM</u>	Arkansas
<u>MAJOR TRIBUTARY</u>	Grape
<u>MAJOR WATER USE</u>	Irrigation
<u>IRRIGATED ACRES</u>	14,930
<u>AVERAGE GROWING SEASON</u>	164 days
<u>ANNUAL MEAN TEMPERATURE</u>	54.1
<u>AVERAGE ANNUAL RAINFALL</u>	12.66 inches
<u>AVERAGE ANNUAL SNOWFALL</u>	35.6 inches
<u>MAJOR SOURCE INCOME</u>	Agriculture, Industry
<u>NUMBER OF FARMS</u>	421
<u>WATER RESOURCE PROJECTS</u>	Frying-pan
<u>LAND OWNERSHIP</u>	
PRIVATE	523,202 Acres
FEDERAL	441,445 Acres
STATE	65,326 Acres
COUNTY AND MUNICIPAL	7,785 Acres



IRRIGATION DIVISION II

HUERFANO COUNTY

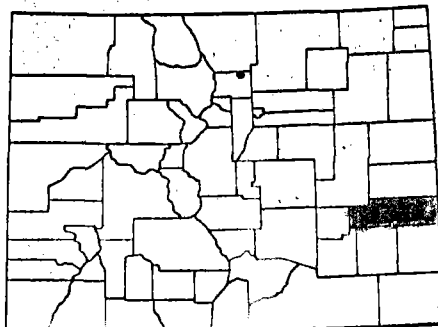
<u>MAJOR CITY</u>	<u>Walsenburg</u>
<u>1970 POPULATION</u>	<u>6,410</u>
<u>URBAN POPULATION</u>	<u>4,227</u>
<u>RURAL POPULATION</u>	<u>2,133</u>
<u>COUNTY AREA</u>	<u>1,578 Sq. Miles</u>
<u>TERRAIN</u>	<u>Mesa, Tableland</u>
<u>ELEVATION (MAJOR CITY)</u>	<u>6,185</u>
<u>MAJOR STREAM</u>	<u>Huerfano</u>
<u>MAJOR TRIBUTARY</u>	<u>Cuchara</u>
<u>MAJOR WATER USE</u>	<u>Irrigation</u>
<u>IRRIGATED ACRES</u>	<u>11,453</u>
<u>AVERAGE GROWING SEASON</u>	<u>151 days</u>
<u>ANNUAL MEAN TEMPERATURE</u>	<u>50.2</u>
<u>AVERAGE ANNUAL RAINFALL</u>	<u>14.13 inches</u>
<u>AVERAGE ANNUAL SNOWFALL</u>	<u>69.0 inches</u>
<u>MAJOR SOURCE INCOME</u>	<u>Agriculture</u>
<u>NUMBER OF FARMS</u>	<u>280</u>
<u>WATER RESOURCE PROJECTS</u>	<u>None</u>
<u>LAND OWNERSHIP</u>	
PRIVATE	747,000 Acres
FEDERAL	211,670 Acres
STATE	43,525 Acres
COUNTY AND MUNICIPAL	320 Acres



IRRIGATION DIVISION II

KIOWA COUNTY

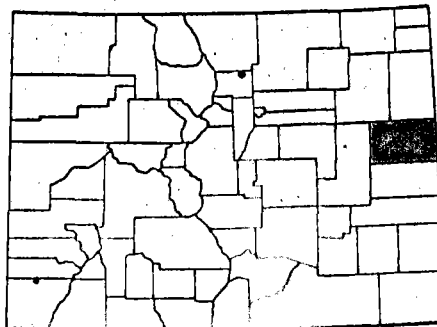
<u>MAJOR CITY</u>	<u>Eads</u>
<u>1970 POPULATION</u>	<u>2,006</u>
<u>URBAN POPULATION</u>	<u>No City Over 2,500</u>
<u>RURAL POPULATION</u>	<u>2,006</u>
<u>COUNTY AREA</u>	<u>1,792 sq. miles</u>
<u>TERRAIN</u>	<u>Plains</u>
<u>ELEVATION (MAJOR CITY)</u>	<u>4,213</u>
<u>MAJOR STREAM</u>	<u>Big Sandy</u>
<u>MAJOR TRIBUTARY</u>	<u>None</u>
<u>MAJOR WATER USE</u>	<u>Irrigation</u>
<u>IRRIGATED ACRES</u>	<u>5,127</u>
<u>AVERAGE GROWING SEASON</u>	<u>156 days</u>
<u>ANNUAL MEAN TEMPERATURE</u>	<u>51.0</u>
<u>AVERAGE ANNUAL RAINFALL</u>	<u>13.78 inches</u>
<u>AVERAGE ANNUAL SNOWFALL</u>	<u>22.3 inches</u>
<u>MAJOR SOURCE INCOME</u>	<u>Agriculture</u>
<u>NUMBER OF FARMS</u>	<u>350</u>
<u>WATER RESOURCE PROJECTS</u>	<u>None</u>
<u>LAND OWNERSHIP</u>	
PRIVATE	1,413,911 Acres
FEDERAL	3,975 Acres
STATE	70,893 Acres
COUNTY AND MUNICIPAL	365 Acres



IRRIGATION DIVISION II

KIT CARSON COUNTY

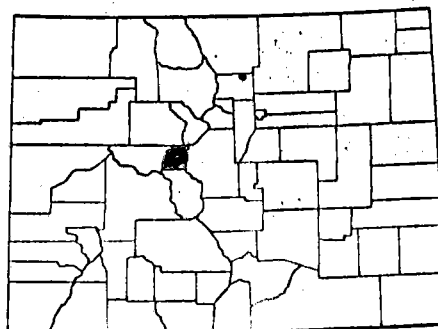
<u>MAJOR CITY</u>	Burlington
<u>1970 POPULATION</u>	7,379
<u>URBAN POPULATION</u>	2,784
<u>RURAL POPULATION</u>	4,595
<u>COUNTY AREA</u>	2,171 sq. miles
<u>TERRAIN</u>	Plains
<u>ELEVATION (MAJOR CITY)</u>	4,163
<u>MAJOR STREAM</u>	Republican
<u>MAJOR TRIBUTARY</u>	None
<u>MAJOR WATER USE</u>	Irrigation
<u>IRRIGATED ACRES</u>	56,576
<u>AVERAGE GROWING SEASON</u>	154 days
<u>ANNUAL MEAN TEMPERATURE</u>	50.3
<u>AVERAGE ANNUAL RAINFALL</u>	16.35 inches
<u>AVERAGE ANNUAL SNOWFALL</u>	22.7 inches
<u>MAJOR SOURCE INCOME</u>	Agriculture
<u>NUMBER OF FARMS</u>	840
<u>WATER RESOURCE PROJECTS</u>	None
<u>LAND OWNERSHIP</u>	
PRIVATE	1,324,600 Acres
FEDERAL	292 Acres
STATE	56,486 Acres
COUNTY AND MUNICIPAL	985 Acres



IRRIGATION DIVISION II

LAKE COUNTY

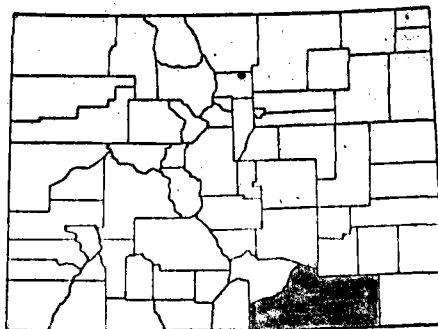
<u>MAJOR CITY</u>	Leadville
<u>1970 POPULATION</u>	8,138
<u>URBAN POPULATION</u>	4,265
<u>RURAL POPULATION</u>	3,873
<u>COUNTY AREA</u>	380 sq. miles
<u>TERRAIN</u>	Mountainous
<u>ELEVATION (MAJOR CITY)</u>	10,152
<u>MAJOR STREAM</u>	Arkansas
<u>MAJOR TRIBUTARY</u>	Lake Fork
<u>MAJOR WATER USE</u>	Irrigation
<u>IRRIGATED ACRES</u>	6,036
<u>AVERAGE GROWING SEASON</u>	82 days
<u>ANNUAL MEAN TEMPERATURE</u>	37.3
<u>AVERAGE ANNUAL RAINFALL</u>	18.45 inches
<u>AVERAGE ANNUAL SNOWFALL</u>	124.7 inches
<u>MAJOR SOURCE INCOME</u>	mining
<u>NUMBER OF FARMS</u>	17
<u>WATER RESOURCE PROJECTS</u>	Frying-pan
<u>LAND OWNERSHIP</u>	
PRIVATE	71,342 Acres
FEDERAL	198,844 Acres
STATE	1,795 Acres
COUNTY AND MUNICIPAL	1,620 Acres



IRRIGATION DIVISION II

LAS ANIMAS COUNTY

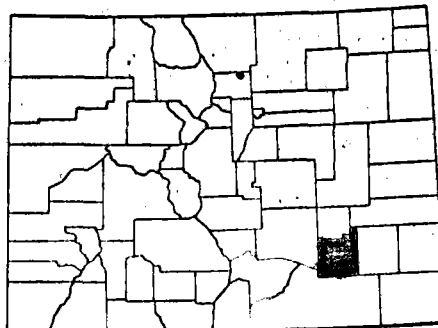
<u>MAJOR CITY</u>	Trinidad
<u>1970 POPULATION</u>	15,291
<u>URBAN POPULATION</u>	9,721
<u>RURAL POPULATION</u>	5,570
<u>COUNTY AREA</u>	4,793 sq. miles
<u>TERRAIN</u>	Foothills
<u>ELEVATION (MAJOR CITY)</u>	6,025
<u>MAJOR STREAM</u>	Purgatoire
<u>MAJOR TRIBUTARY</u>	None
<u>MAJOR WATER USE</u>	Irrigation
<u>IRRIGATED ACRES</u>	19,463
<u>AVERAGE GROWING SEASON</u>	156 days
<u>ANNUAL MEAN TEMPERATURE</u>	50.4
<u>AVERAGE ANNUAL RAINFALL</u>	15.03 inches
<u>AVERAGE ANNUAL SNOWFALL</u>	47.7 inches
<u>MAJOR SOURCE INCOME</u>	Agriculture, Coal Mining
<u>NUMBER OF FARMS</u>	200
<u>WATER RESOURCE PROJECTS</u>	Trinidad Dam
<u>LAND OWNERSHIP</u>	
PRIVATE	3,179,204 Acres
FEDERAL	151,214 Acres
STATE	163,997 Acres
COUNTY AND MUNICIPAL	3,482 Acres



IRRIGATION DIVISION II

OTERO COUNTY

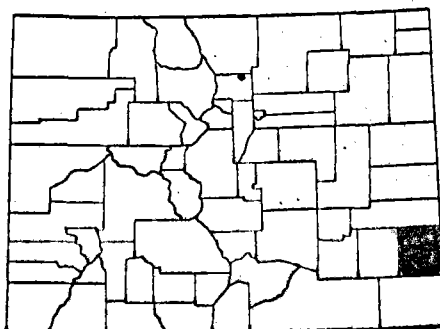
<u>MAJOR CITY</u>	La Junta
<u>1970 POPULATION</u>	22,824
<u>URBAN POPULATION</u>	12,514
<u>RURAL POPULATION</u>	10,310
<u>COUNTY AREA</u>	1,267 Sq. Miles
<u>TERRAIN</u>	Plains
<u>ELEVATION (MAJOR CITY)</u>	La Junta
<u>MAJOR STREAM</u>	Arkansas
<u>MAJOR TRIBUTARY</u>	Horse Creek
<u>MAJOR WATER USE</u>	Irrigation
<u>IRRIGATED ACRES</u>	57,675
<u>AVERAGE GROWING SEASON</u>	162 days
<u>ANNUAL MEAN TEMPERATURE</u>	52.0
<u>AVERAGE ANNUAL RAINFALL</u>	12.31 inches
<u>AVERAGE ANNUAL SNOWFALL</u>	26.7 inches
<u>MAJOR SOURCE INCOME</u>	Agriculture
<u>NUMBER OF FARMS</u>	690
<u>WATER RESOURCE PROJECTS</u>	Frying-pan
<u>LAND OWNERSHIP</u>	
PRIVATE	506,310 Acres
FEDERAL	169,004 Acres
STATE	120,572 Acres
COUNTY AND MUNICIPAL	2,050 Acres



IRRIGATION DIVISION II

PROWERS COUNTY

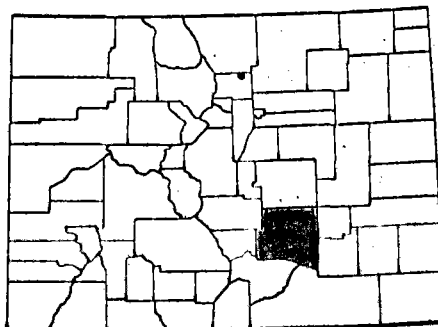
<u>MAJOR CITY</u>	Lamar
<u>1970 POPULATION</u>	12,877
<u>URBAN POPULATION</u>	7,510
<u>RURAL POPULATION</u>	5,367
<u>COUNTY AREA</u>	1,626 sq. miles
<u>TERRAIN</u>	Plains
<u>ELEVATION (MAJOR CITY)</u>	3,622
<u>MAJOR STREAM</u>	Arkansas
<u>MAJOR TRIBUTARY</u>	None
<u>MAJOR WATER USE</u>	Irrigation
<u>IRRIGATED ACRES</u>	93,004
<u>AVERAGE GROWING SEASON</u>	163 days
<u>ANNUAL MEAN TEMPERATURE</u>	52.0
<u>AVERAGE ANNUAL RAINFALL</u>	15.20 inches
<u>AVERAGE ANNUAL SNOWFALL</u>	26.0 inches
<u>MAJOR SOURCE INCOME</u>	Agriculture
<u>NUMBER OF FARMS</u>	469
<u>WATER RESOURCE PROJECTS</u>	None
<u>LAND OWNERSHIP</u>	
PRIVATE	996,952 Acres
FEDERAL	1,064 Acres
STATE	44,667 Acres
COUNTY AND MUNICIPAL	1,794 Acres



IRRIGATION DIVISION II

PUEBLO COUNTY

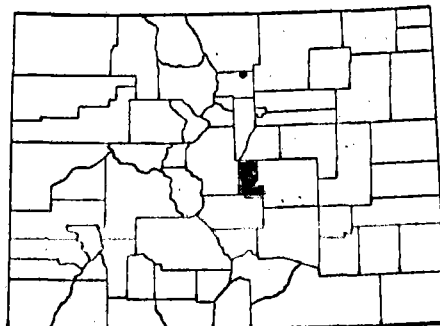
MAJOR CITY	Pueblo
1970 POPULATION	117,212
URBAN POPULATION	106,565
RURAL POPULATION	10,556
COUNTY AREA	2,401 sq. miles
TERRAIN	Plains
ELEVATION (MAJOR CITY)	4,696
MAJOR STREAM	Arkansas
MAJOR TRIBUTARY	Fountain
MAJOR WATER USE	Irrig., Indust.
IRRIGATED ACRES	35,749
AVERAGE GROWING SEASON	169 days
ANNUAL MEAN TEMPERATURE	51.2
AVERAGE ANNUAL RAINFALL	12.14 inches
AVERAGE ANNUAL SNOWFALL	31.3 inches
MAJOR SOURCE INCOME	Industry
NUMBER OF FARMS	469
WATER RESOURCE PROJECTS	Frying-pan
LAND OWNERSHIP	
PRIVATE	1,173,389 Acres
FEDERAL	76,712 Acres
STATE	232,519 Acres
COUNTY AND MUNICIPAL	3,045 Acres



IRRIGATION DIVISION II

TELLER COUNTY

<u>MAJOR CITY</u>	Cripple Creek
<u>1970 POPULATION</u>	3,033
<u>URBAN POPULATION</u>	No City over 2,500
<u>RURAL POPULATION</u>	3,033
<u>COUNTY AREA</u>	554 sq. miles
<u>TERRAIN</u>	Mountainous
<u>ELEVATION (MAJOR CITY)</u>	9,949
<u>MAJOR STREAM</u>	Four Mile
<u>MAJOR TRIBUTARY</u>	None
<u>MAJOR WATER USE</u>	Irrig., Commer.
<u>IRRIGATED ACRES</u>	865
<u>AVERAGE GROWING SEASON</u>	68 days
<u>ANNUAL MEAN TEMPERATURE</u>	NA
<u>AVERAGE ANNUAL RAINFALL</u>	NA
<u>AVERAGE ANNUAL SNOWFALL</u>	NA
<u>MAJOR SOURCE INCOME</u>	Tourism, Agriculture
<u>NUMBER OF FARMS</u>	10
<u>WATER RESOURCE PROJECTS</u>	None
<u>LAND OWNERSHIP</u>	
PRIVATE	195,257 Acres
FEDERAL	156,671 Acres
STATE	8,755 Acres
COUNTY AND MUNICIPAL	5,598 Acres



COUNTY	LAND AREA (1000 A.)	NO. OF FARMS	LAND IN FARMS (1000 A.)		LAND IRRIGATED FARMS ACRES		WHEAT		OATS
			TOTAL	CROP LAND	FARMS	ACRES	WINTER	SPRING	
Baca	1642	750	1430	847	171	56,910	42,000	250	---
Bent	971	450	917	145	301	45,292	9,000	50	230
Chaffee	665	170	160	24	121	16,126	---	---	200
Crowley	514	400	490	105	287	25,010	1,150	80	90
Custer	472	180	280	28	85	15,930	160	50	650
El Paso	1381	750	1050	200	121	13,630	17,000	450	1800
Fremont	1000	550	493	30	421	13,920	550	30	80
Huerfano	1010	280	800	48	138	11,453	3,300	10	220
Kiowa	1147	350	1080	600	15	5,127	38,000	300	---
Kit Carson	1389	840	1340	776	213	56,576	165,000	300	900
Lake	243	17	28	6	10	6,036	---	---	---
Las Animas	3068	600	2781	130	227	19,463	3,940	70	290
Otero	811	690	630	87	539	57,675	3,400	100	460
Prowers	1041	729	1030	530	430	93,044	30,500	---	130
Pueblo	1537	800	1362	151	469	35,749	11,000	160	350
Teller	355	70	155	8	10	865	---	---	---

CORN GRAIN	SILAGE	SORGUMS		SUGAR BEETS	DRY BEANS	POTATOES	BROOM CORN	ALFALFA	WILD HAY	ALL HAY	BARLEY
		GRAIN	SILAGE								
10,500	200	90,000	49,500	1,640	100	100	35,700	2,100	100	7,900	600
1,100	1,000	17,500	7,300	460	---	40	---	23,500	250	25,150	370
---	---	---	---	---	---	---	---	5,800	480	9,280	100
1,700	2,900	9,600	740	550	750	20	---	12,500	650	13,750	80
---	50	---	130	---	---	---	---	2,300	---	28,300	210
3,300	4,000	3,400	2,100	---	---	---	---	12,500	3,500	22,900	600
280	280	100	170	---	---	---	---	5,000	850	8,350	270
50	100	---	280	---	---	10	10	5,100	800	7,400	250
190	110	38,000	15,600	50	---	---	---	800	500	10,000	---
27,300	9,000	15,000	22,300	2,200	1,900	---	---	5,200	1,300	20,500	1,400
---	---	---	---	---	---	---	---	---	1,300	1,900	---
700	660	---	4,720	---	---	---	200	12,000	950	12,850	140
4,600	5,700	---	1,660	1,100	660	---	---	14,500	50	15,150	720
1,100	1,500	95,600	41,010	2,430	50	20	100	35,500	---	37,200	---
4,900	1,800	---	4,790	1,390	12,600	100	---	13,500	350	17,950	1,250
---	---	---	---	---	---	---	---	50	550	2,000	---

Commentary on Basin Yield and Water Budget Data

In Water Year 1975 the native basin yield for the Arkansas Basin above the confluence of the Purgatoire (including the Purgatoire River) was 594,796 A.F. The average percipitation over the area (17,920 sq. miles of 11,368,800 acres) was 10.89 inches. This gives a total percipitation of 10,407,936 A.F. for the basin. Of this 10,407,936 A.F. only 549,796 A.F. (5.9%) is accounted for in stream-flow; the reamining 94.3% is either evaporated, transpired or retained in the soil.

The diverted water of 1,686,718 A.F., when compared with native basin yield plus transmountain imported water of 759,660 A.F. indicates the water was used 2.23 times.

COMPARATIVE WATER YEAR 1974, 1975 DATA.

	1974	1975	
Basin Yield Including Transmountain	759,060	756,556	A.F.
Total Diverted	1,382,321.52	1,686,718.00	A.F.
Average Precipitation	9.59 Inch	10.89 Inch	

ADMINISTRATIVE WATER YEAR 1975

Pertinent Basin Yield Statistics for Arkansas Drainage in Colorado Div. 2

Recorded Flow at Arkansas - Las Animas	81,910	A.F.
Estimated Depletion by Irrigation above gage 1.5 A.F./Acre x 412,000 Acres - 618,000 A.F.	618,000	A.F.
Recorded Flow at Purgatoire River - Las Animas	2,646	A.F.
Estimated Depletion by Irrigation above gage 1.5 A.F./Acre x 36,000 Acres - 54,000 Acres	54,000	A.F.
Basin Yield including 161,100 A.F. Transmountain Import	756,556	A.F.
Less.....	161,100	A.F.
Native Basin Yield above Confluence of Arkansas and Purgatoire River	594,796	A.F.
Total Diversion in Division 2	1,686,718	A.F.

D.D.	Active	Inactive		# Ditches		Direct Diver. A.F.	# Acres Irrig.	A.F. Per Acre	Ind. Use Diver. A.F.	Municipal Diver. A.F.	T. Mtn. Diver. A.F.	Total Diver. A.F.
		N.A.	N.U.	Admin. Close	Freq.							
10	45		205	40	4	66085	10730	6.16		3173	161,100	69258
11	167		138	167	0	149318	17164	8.70				149318
12*	239		93	189	52	291877	17606	16.68	102483	10084		404444
13*	500		53	361	45	66670	31420	2.12				66670
14	40		25	34	3	237808	102549	2.32		24358		262166
15	82		42	63	18	31273	4654	6.78		159		31432
16	244		169	208	37	66018	29458	2.24				66018
17	44		62	33	7	587312	363864	1.61				587312
18	27		24	25	0	4909	7550	0.65				4909
19	105		137	92	13	61664	10345	5.96				61664
66	7		8	7		702	489	1.44				702
67	38		108	33	6	123082	76348	1.61				123082
TOTAL	1538		1064	1252	185	1686718	672177	2.51	120483	37774	161100	1826975

* Some districts above are an estimate of their direct diversions for water year 1975.

DIVISION SUMMARY DIVISION NO. 2
Direct Flow Diversions 1975

DIVERSION DATA

Recorded Diversion by Municipalities: Water Year 1975

Municipal Diversion, Colorado Springs	14,820	
Municipal Diversion, Canon City	10,084	
Municipal Diversion, Pueblo	24,358	
Total Recorded Municipal Diversion	<u>49,262</u>	A.F.

Estimated Return Flow	23,000
Estimated Depletion by Municipalities	<u>26,262</u>

Recorded Diversion by Industrial Use

Diversion by Minnequa Canal	89,860
C.F. & I. Diversion from St. Charles	12,523
Total Industrial Diversion	<u>102,383</u>

Estimated Return Flow	75,000
Estimated Depletion by Industry	<u>27,383</u>

Recorded Diversion by Irrigation

Water District 10	66,085
Water District 11	149,318
Water District 12 *	291,877
Water District 13	66,670
Water District 14	237,808
Water District 15	31,273
Water District 16	66,018
Water District 17	587,312
Water District 18	4,909
Water District 19	61,664
Water District 66	702
Water District 67	123,082
Total Irrigation Diversion	<u>1,686,718</u>

Some above districts are an estimate of their direct diversions for Water Year 1975.

TRANSMOUNTAIN DIVERSION

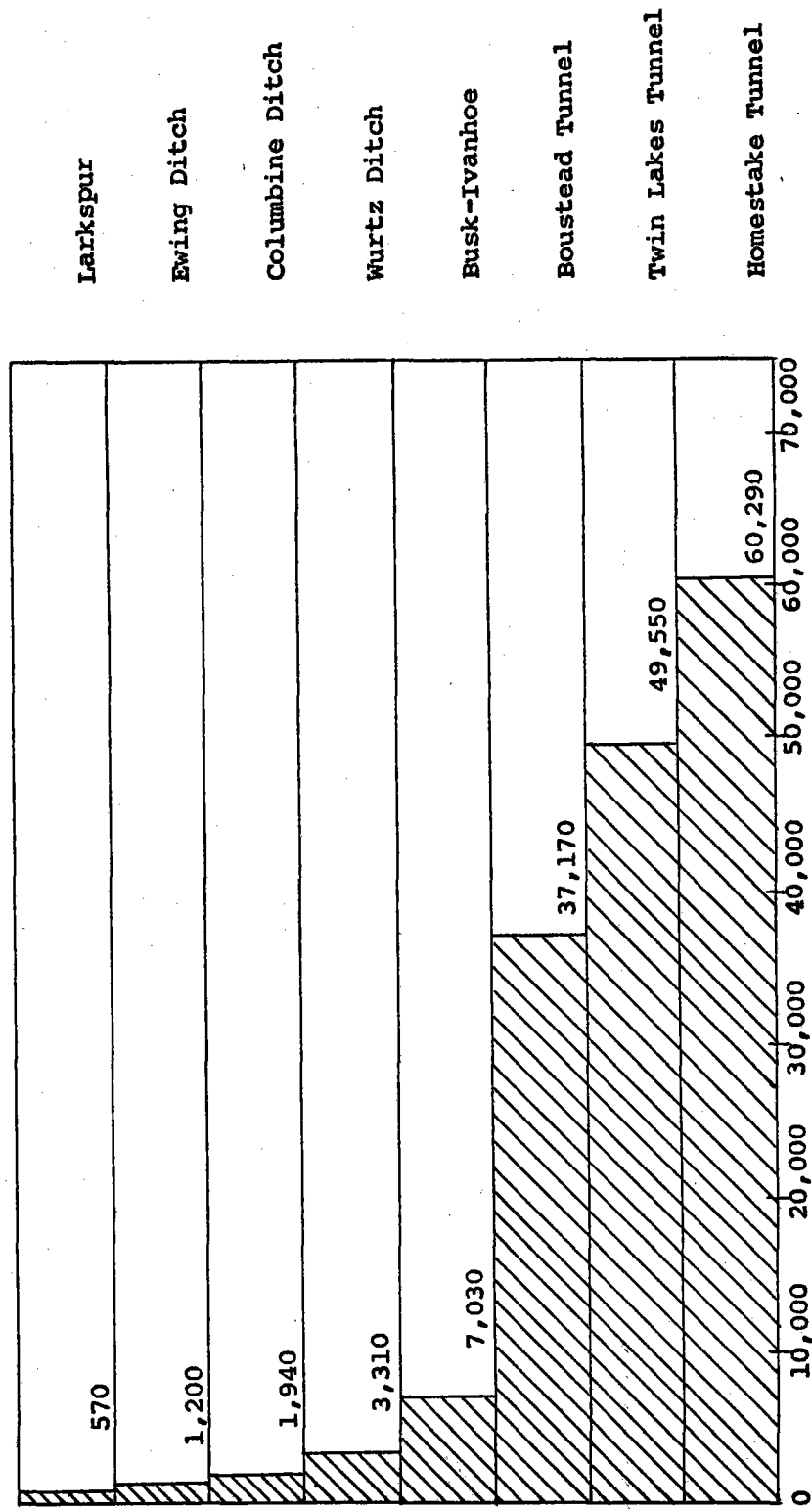
DIVISION NO. 2

Tabulation 1975

<u>NAME</u>	<u>SOURCE</u>	<u>RECIPIENT</u>	<u>AMOUNT DIVERTED</u> <u>10/1/74 to 9/30/75</u>
Homestake Tunnel	Middle Fork Homestake Creek Div. No. 5	Cities of Colorado Springs & Aurora	60,290 A.F.
Wurtz Ditch	Eagle River Div. No. 5	City of Pueblo	3,310 A.F.
Ewing Ditch	Piney Creek	City of Pueblo	1,200 A.F.
Columbine Ditch	Eagle River Div. No. 5	City of Pueblo	1,940 A.F.
Twin Lakes Tunnel	Roaring Fork River Div. No. 5	Twin Lakes Reservoir and Canal Company	49,550 A.F.
Busk Ivanhoe Tunnel	Ivanhoe Creek Div. No. 5	Highline Canal Co. and City of Pueblo	7,030 A.F.
Larkspur Ditch	Tomici Creek Div. No. 5	Catlin Canal Co.	570 A.F.
Boustead Tunnel	Fryingpan River Div. No. 5	U.S.B.R.	37,170 A.F.
TOTAL			161,100 A.F.

TRANSMOUNTAIN DIVERSION
DIVISION NO. 2

SUMMARY OF DIVERSION FOR
WATER YEAR 1975



ACRE FEET

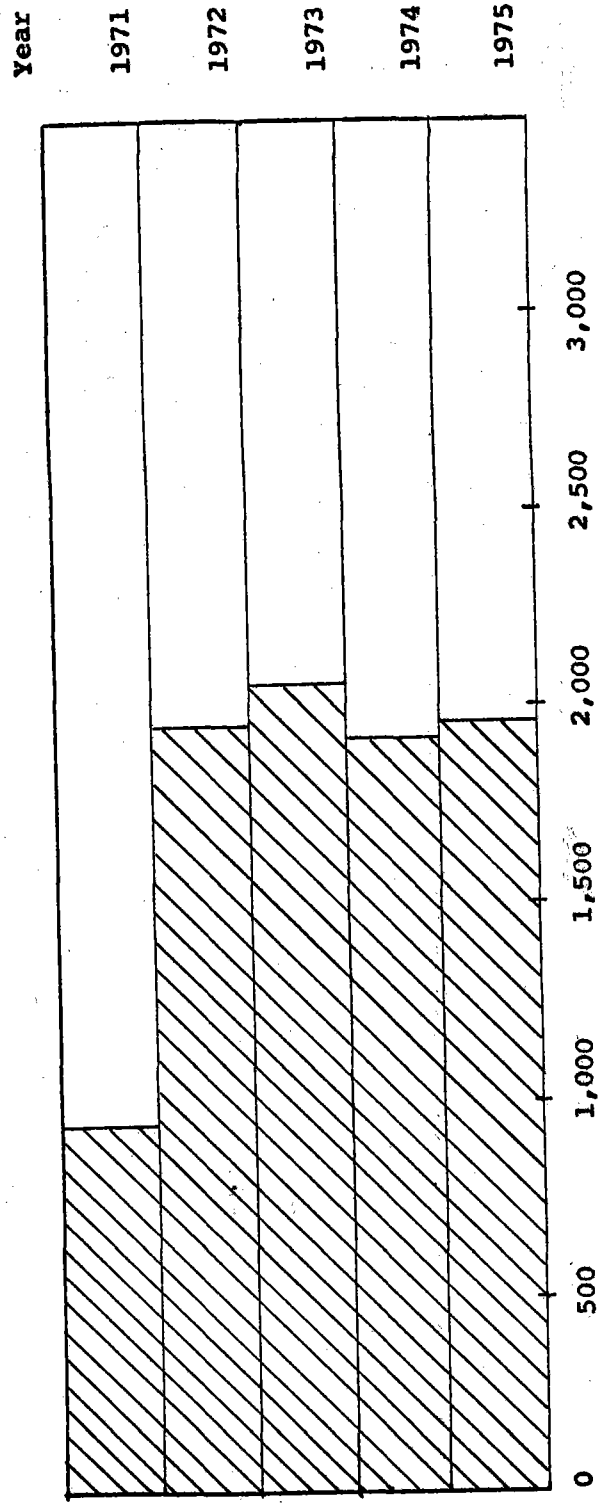
TRANSMOUNTAIN DIVERSION

Division No. 2

COLUMBINE DITCH 1975

Source: Eagle River, Division No. 5

Recipient: City of Pueblo



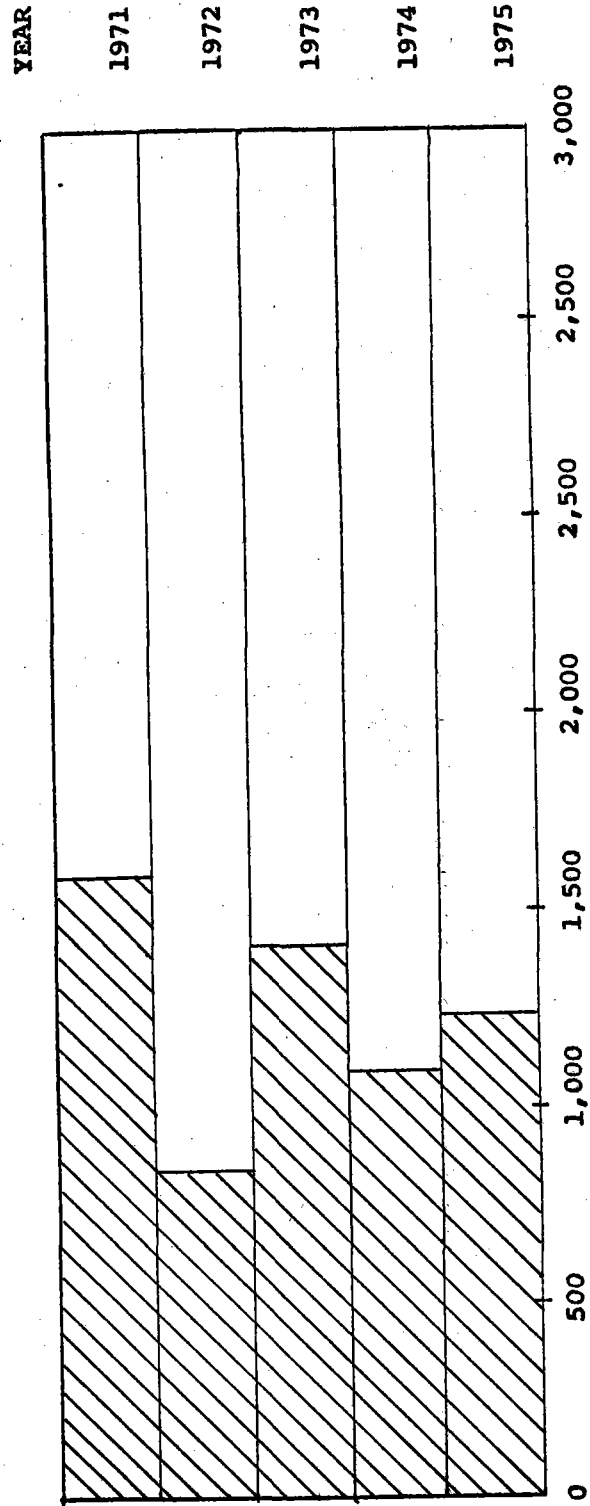
TRANSMOUNTAIN DIVERSION

Division No. 2

EWING DITCH 1975

Source: Piney Creek Division No. 5

Recipient: City of Pueblo



ACRE FEET
5 YEAR COMPARISON

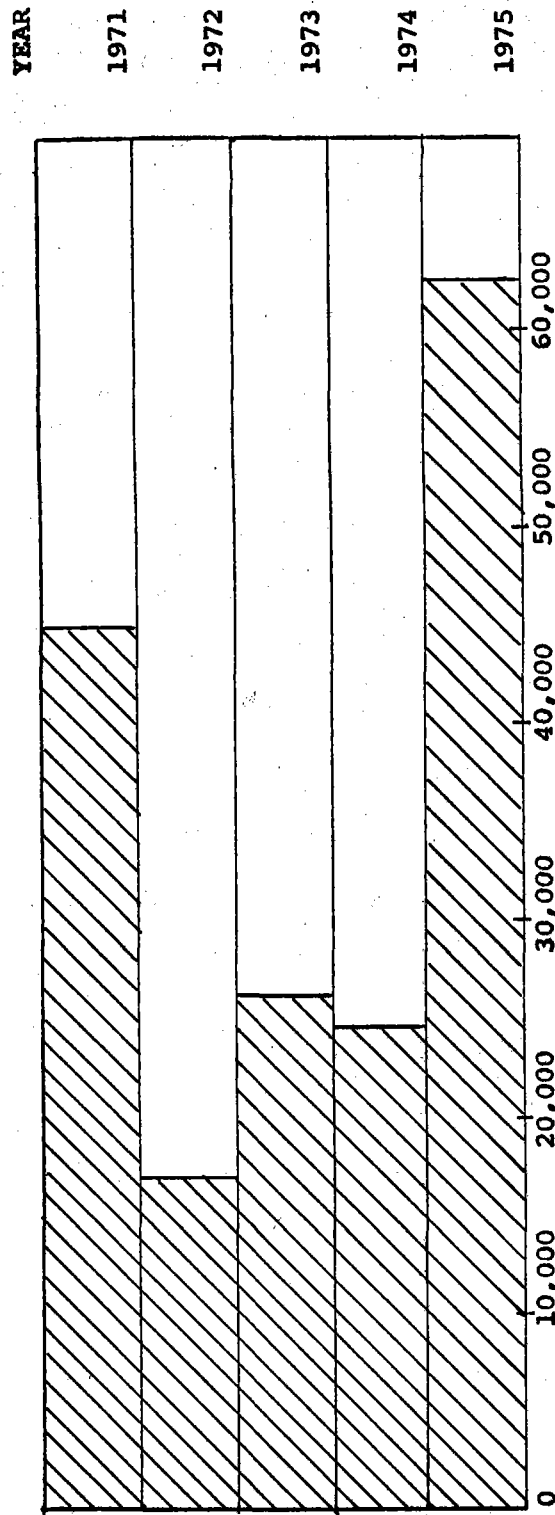
TRANSMOUNTAIN DIVERSION

Division No. 2

HOMESTAKE TUNNEL 1975

SOURCE: Middle Fork Homestake Creek Division

RECIPIENT: Cities of Colorado Springs and Aurora



ACRE FEET

5 YEAR COMPARISON

TRANSMOUNTAIN DIVERSION

Division No. 2

LARKSPUR DITCH 1975

Source: Tomici Creek Division No. 4

Recipient: Catlin Canal Company

YEAR

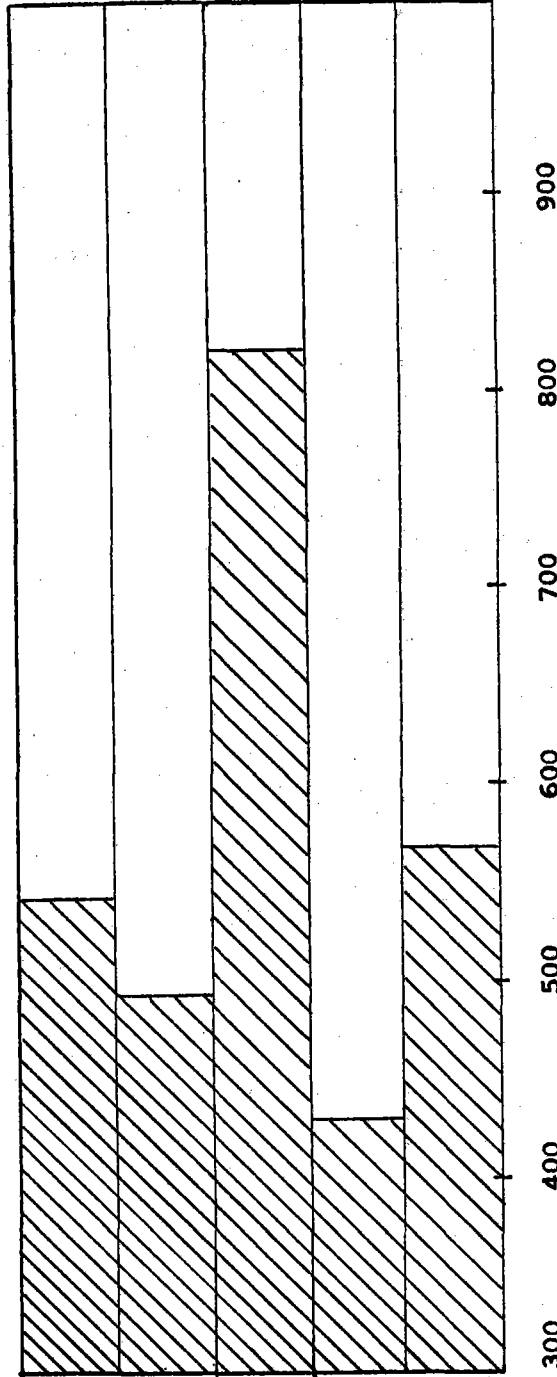
1971

1972

1973

1974

1975



ACRE FEET

5 YEAR COMPARISON

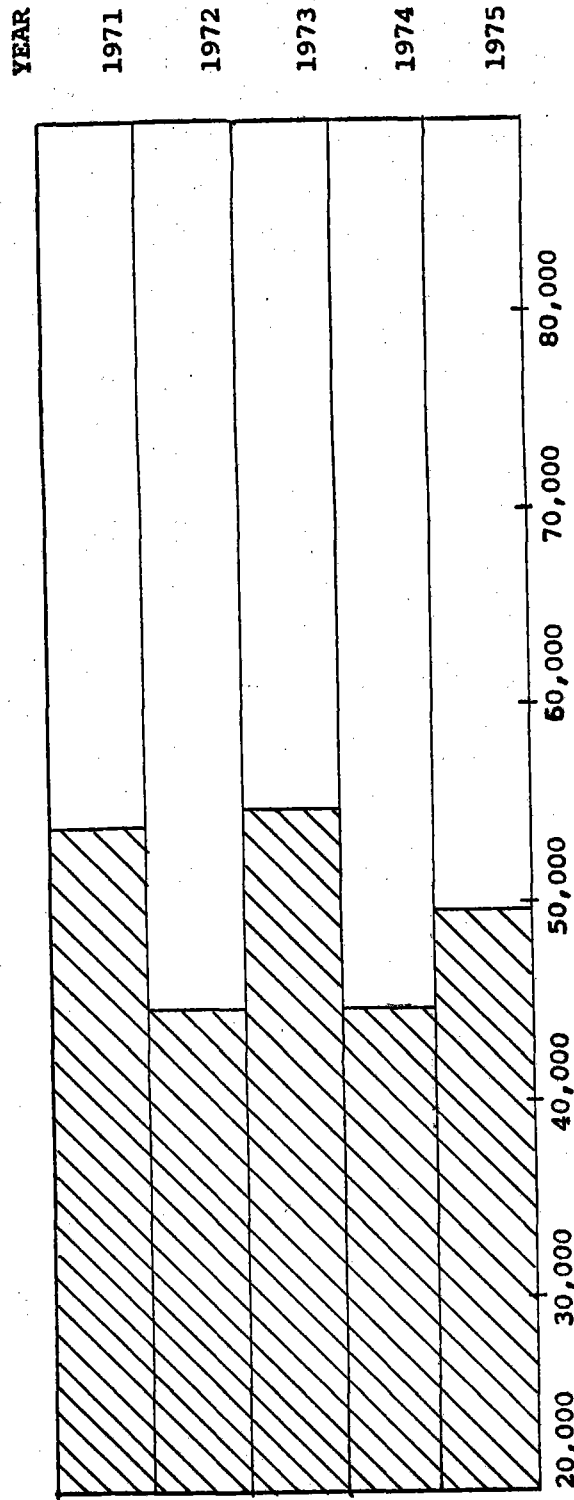
TRANSMOUNTAIN DIVERSION

Division No. 2

TWIN LAKES TUNNEL 1975

Source: Roaring Fork River Division No. 5

Recipient: Twin Lakes Reservoir and Canal Company



ACRE FEET
5 YEAR COMPARISON

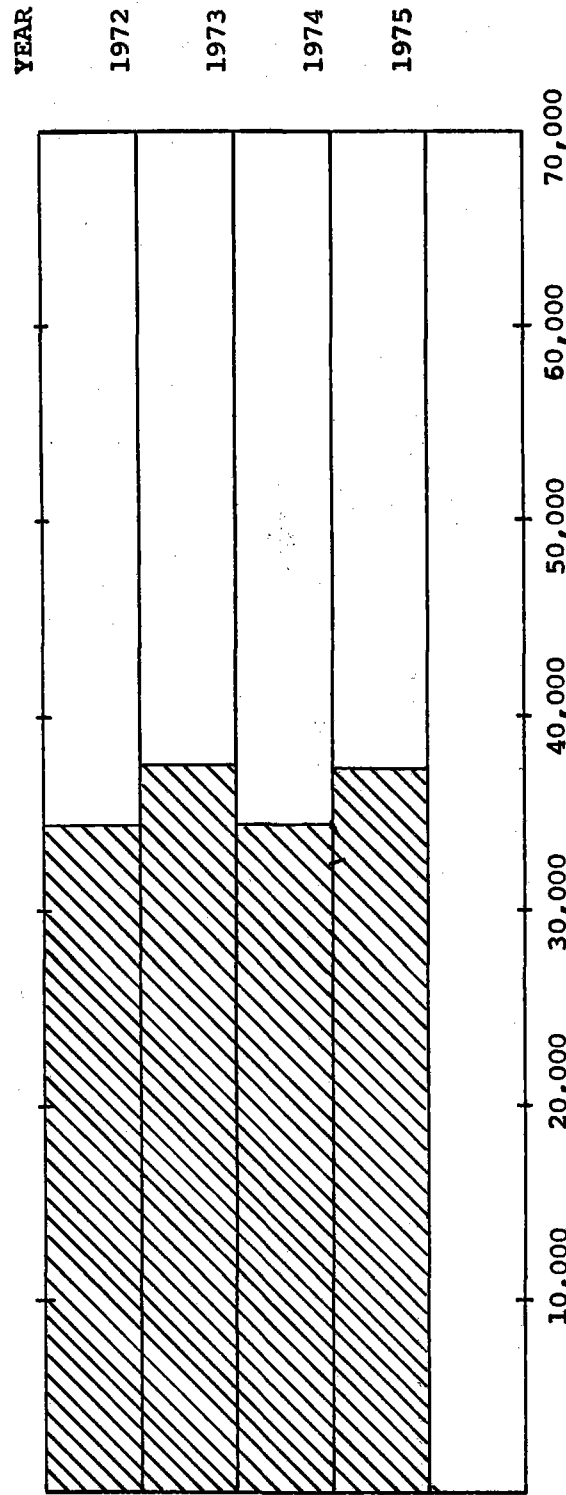
TRANSMOUNTAIN DIVERSION

Division No. 2

BOUSTEAD TUNNEL

SOURCE: Fryingpan River

RECIPIENT: U.S.B.R.



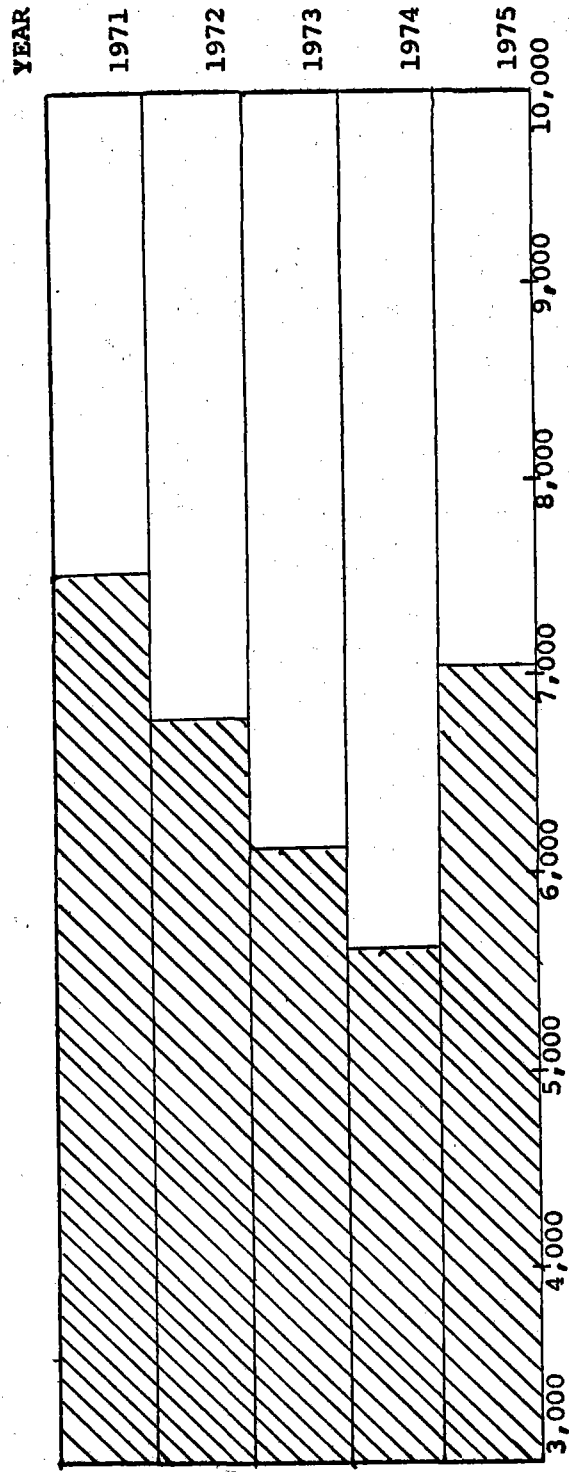
TRANSMOUNTAIN DIVERSION

DIVISION NO. 2

BUSK IVANHOE 1975

Source: Ivanhoe Creek Division No. 5

Recipient: Highline Canal Co. & City of Pueblo



ACRE FEET
5 YEAR COMPARISON

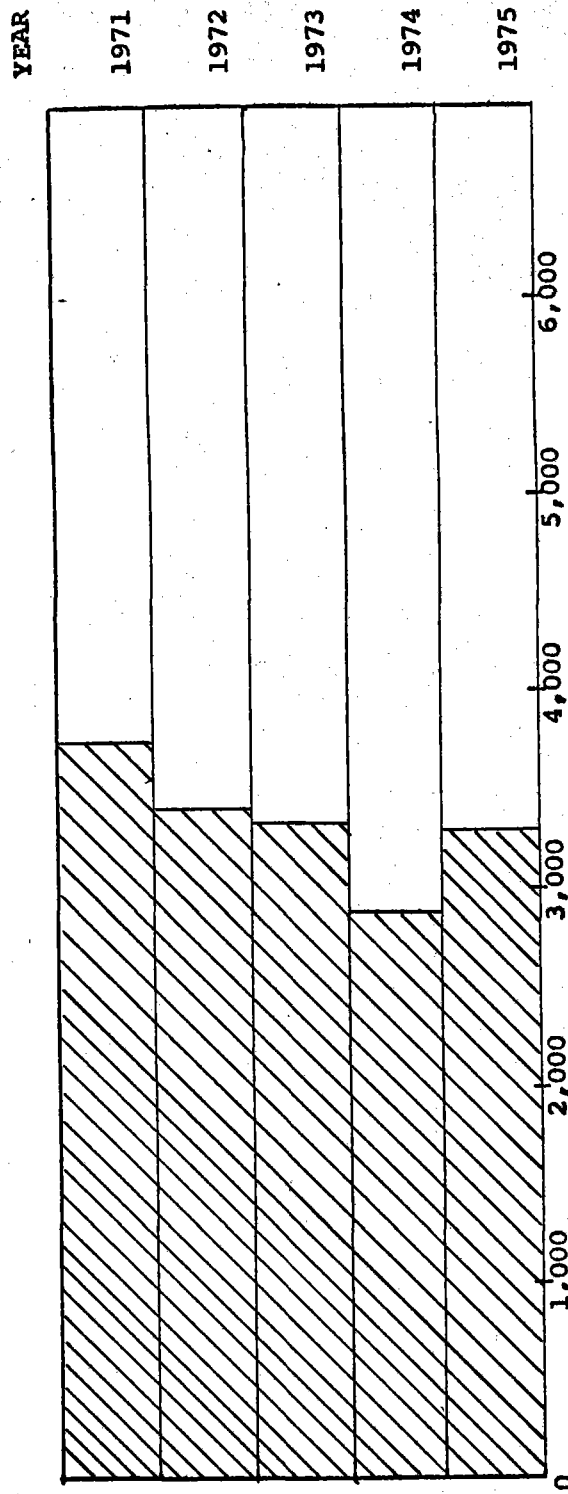
TRANSMOUNTAIN DIVERSION

Division No. 2

WURTZ DITCH 1975

SOURCE: Eagle River Diversion No. 5

RECIPIENT: City of Pueblo



ACRE FEET

5 YEAR COMPARISON

PRECIPITATION

Rainfall was generally inadequate in the entire division. The runoff was in some cases almost non-existent in the eastern portion and good to excellent in the western portion.

Summer showers were well distributed with little or no flood damage reported.

FLOODS

There were no reports of major floods. Flow into and out of Pueblo Reservoir was closely monitored. The stations used for monitoring in flow and out flow were in use throughout the water year with data obtained, complete and used for all computations.

DAMS

The dam inspection unit from Denver was busy in Division 2. The total number of inspections number sixty-seven.

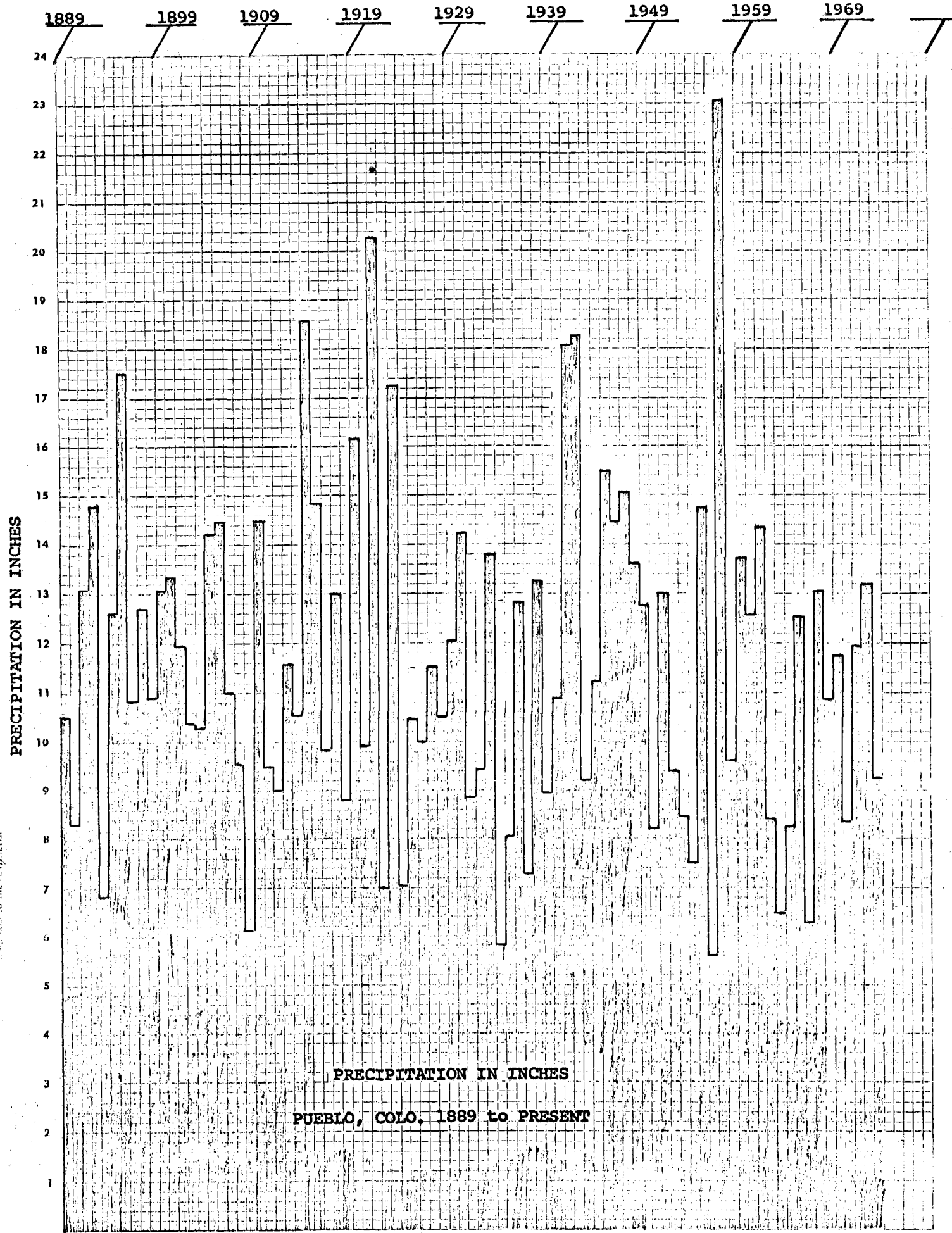
IRRIGATION DIVISION NO. 2

STATION	WATER CONTENT % NORMAL - MAY 1975	SNOW DEPTH	WATER CONTENT MAY 1, 1975	AVERAGE INCHES
BIGELOW DIVIDE	190%	25"	7.7	3.6
COOPER HILL	128%	50"	13.0	12.1
EAST FORK	140%	32"	10.3	7.5
FOUR MILE PARK	14%	17"	5.1	1.4
FREMONT PASS	117%	64"	20.7	18.1
GARFIELD	127%	47"	19.9	8.6
HERMIT LAKE		45"	18.0	---
MONARCH PASS	116%	63"	24.8	16.3
TENNESSEE PASS	94%	40"	13.0	8.5
TWIN LAKES TUNNEL	129%	41"	13.4	9.4
WESTCLIFFE		30"	11.5	1.6
APISHAPA		19"	5.7	3.3
CUCHARAS CREEK		31"	10.9	---
LA VETA PASS		23"	7.3	2.1
BOURBON		22"	7.3	2.5

Streamflow should be much above normal this summer. All the tributary streams as well as the mainstream of the Arkansas are being forecast to flow at least 50% more than normal. All other conditions on the Arkansas are poor. Carry over storage is almost non-existent and soil moisture in the plains is listed as poor to fair.

PRECIPITATION
IRRIGATION DIVISION #2

STATION	April 1975	DEPART FROM NORMAL	May 1975	DEPART FROM NORMAL	June 1975	DEPART FROM NORMAL	July 1975	DEPART FROM NORMAL	August 1975	DEPART FROM NORMAL	Sept. 1975	DEPART FROM NORMAL
Lamar	.97	-.38	1.40	-1.13	5.31	3.05	1.96	-.37	.06	-2.28	.12	
Leadville	.96	-.12	.47	-1.57			2.09	.11	1.00	-.86	.44	-.78
Pueblo	.85		.69		2.14		2.19		1.75		.65	
Trinidad	.37		.89		1.33		1.94		1.45		1.19	
Westcliffe	1.36	-.56	1.02	-.62	1.32	.23	1.97	-.49	1.34	-1.10	1.77	.81
Colorado Springs	.68	-.77	1.00	-1.12	1.97	.66	2.65	-.45	1.14	-1.44	.43	-.68



PUEBLO, COLORADO WEATHER DATA

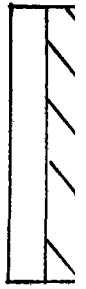
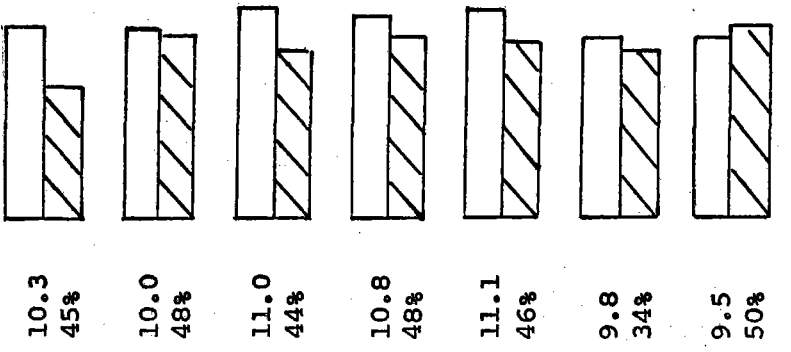
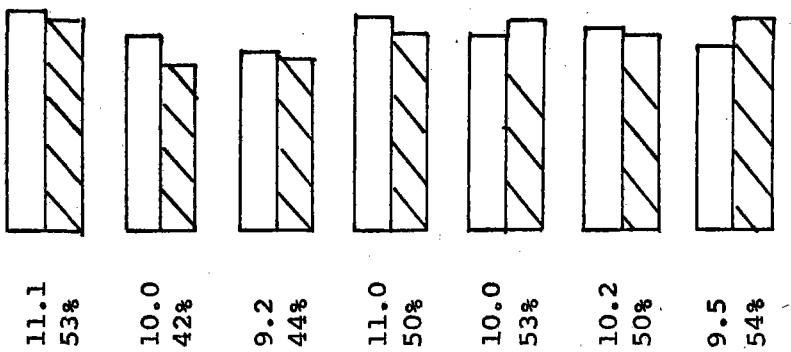
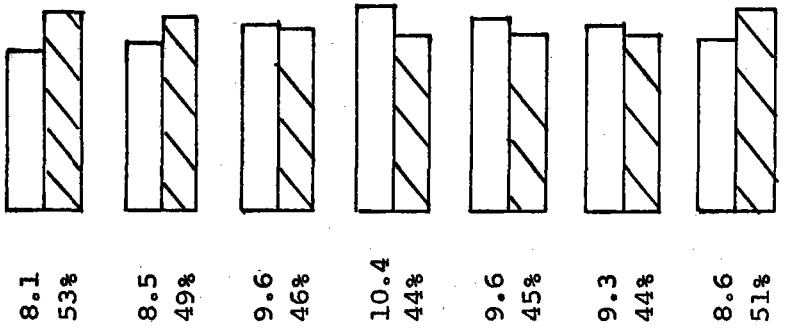
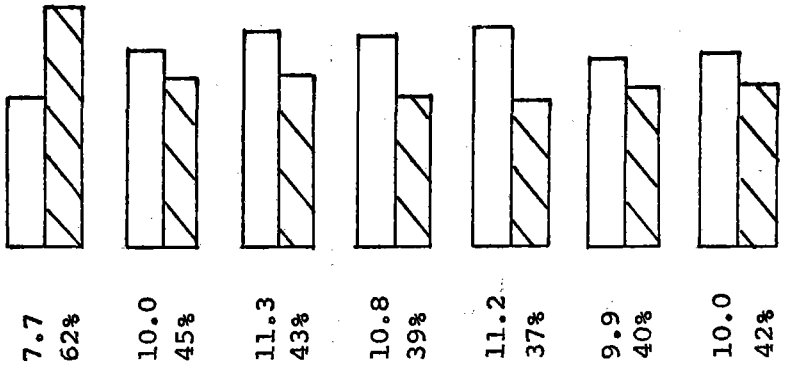
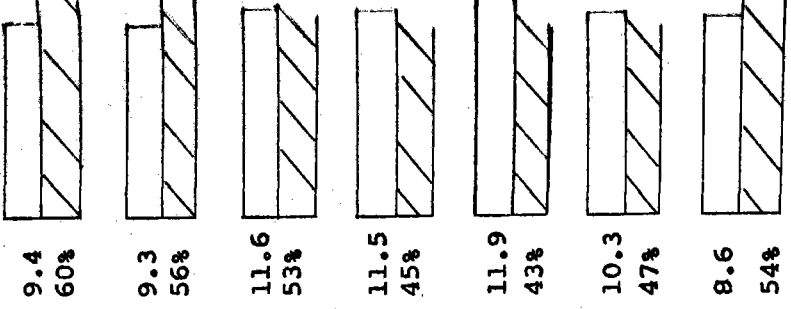
1975

1974

1973

1972

1971



DAMS
IRRIGATION DIVISION #2

WATER DIST.	NAME OF RESERVOIR	STREAM	DAM HEIGHT	INSPECTION
10	Air Force Academy Dam			Yes
	City of Colo. Spgs. (Prospect, Northfield #4, North Catamont, So. Catamont, Crystal Cr., Lake Moraine)			Yes Yes
	Fountain Valley	Fountain		
	Keeton Dam	Lit. Fountain	45'-50'	
	Manitou	French Cr.	over 35'	No
	Mesa No. 1&2	Camp Cr.		Yes
	Spring Run #2	Spring Run		Yes
	Townsend Dam & Res	Rock Cr.		Yes
	Woodmoor County Club #4			Yes
11	Diamond			Yes
	Fooses Creek Dam			Yes
	Sugar Loaf	Lake Fork	over 35'	No'
	Twin Lakes	Lake Cr.	over 35'	Yes
12	Clear Creek	Clear Cr.	over 35'	No
	Brush Hollow	Brush Hollow	over 35'	Yes
	Canon City Sed. Pond			Yes
	City of Colo. Spgs. (C.S. No. 1,2,4,5,8, Penrose)			Yes
	Mt. Pisgah	Four Mile	over 35'	Yes
13	Park Center #8-10	Four Mile		Yes
	DeWeese Dye	Grape Cr.	over 35'	No
14	St. Charles Mesa Dam	St. Charles		Yes
	Teller Dam	Turkey Cr.		Yes
15	Heyden Beckwith	Greenhorn	over 35'	Yes
	Clennin	Lit. Grand	over 20'	Yes
	Royce, Gene	Spring	over 15'	Yes
	St. Chas. (aka Lake Isabel)			Yes
	St. Charles #2-3	St. Charles		Yes
16	Andrietta	Bear Cr.	over 20'	Yes
	Bressan #1	Bear Cr.	over 30'	Yes
	Brunelli	Bear Cr.	over 30'	Yes
	Clark #2	Hill Arroya	over 30'	Yes
	Craeger Dam	Huerfano R.	over 30'	Yes
	Cucharas #5	Cucharas R.		Yes
	Daigre	Cucharas R.		Yes
	Holita	Cucharas R.	Yes	Yes
	Horseshoe			Yes
	Houchin So.	Spring	over 20'	Yes
	Houchin No.	Spring	over 20'	Yes

WATER DIST.	NAME OF RESERVOIR	STREAM	DAM HEIGHT	INSPECTION
16	Huerfano Valley	Huerfano R.		Yes
	Maria Stevens	Cucharas R.		Yes
	Martin Lakes			Yes
	Orlando	Huerfano		Yes
	Sharps Orchard	Ditch	over 20'	Yes
	Valdez			Yes
	Vertrees	Simpson Arroya	over 10'	Yes
	Walsenburg Water Syst. Wahatoya	Cucharas Ro. Cucharas	over 20'	Yes Yes
17	Henry	Arkansas	over 10'	Yes
	Holbrook	Arkansas		Yes
	Karval	Adobe		Yes
	Meredith	Arkansas	over 35'	Yes
	Horse Creek	Arkansas	over 35'	Yes
	Adobe	Arkansas	over 20'	Yes
	Dye	Arkansas	over 20'	Yes
18	Seven Lakes	Las Animas	over 20'	None
19	Model	Las Animas	over 20'	Yes
	North	No. Fork	over 20'	Yes
67	Antelope	Big Sandy	over 35'	Yes
	Dingwell Ditch Reg.	E. Prowers		
		Arroya	over 20'	Yes
	Fort Lyon	Ditch	over 10'	Yes
	Nee Noshe		over 20'	Yes
	Queens a/k/a Nee Skah	Kiowa Cr.	over 20'	Yes
	Ramah	Big Sandy	over 40'	Yes
	S-16	Big Sandy	over 20'	Yes
	Thurston Dam		Over 8'	Yes
	Two Buttes Verhoeff	Two Buttes Cr. E. Prowers	over 100'	Yes
Wootten Dam	Arroya	over 10'	Yes	

NAME OF RESERVOIR	SOURCE	AMOUNT OF ACRE FEET		
		NOVEMBER 1, 1974	APRIL 1, 1975	OCTOBER 31, 1975
Amber Res. No. 2	Unnamed Springs	-0-	-0-	-0-
Callhan Res	Fountain	611	611	611
Crystal Cr. Res.	Crystal Creek	1474	800	-0-
Fountain Valley #2	Fountain	764	5146	744
Fountain Valley #3	Fountain	-0-	-0-	-0-
Manitou Res.	No. Branch French Cr.	853	853	853
Monument State	Monument Creek	324	324	324
North Catamount	No. Fork Catamount	6437	5775	11162
North Field No. 1		174	244	247
South Catamount	So. Catamount	1748	595	1114
Spring Run	Spring Run	151	226	145
South Suburban Res.	So. Fork Cheyenne	203	231	210
Clear Creek Res.	Clear Creek	1583	1990	3675.91
O'Haver	Grays Creek			
Sugar Loaf Res.	Lake Fork Cr.	51492	47090	72340
Twin Lakes Res.	Lake Creek	17654	14930	19468
Brush Hollow	Beaver Creek	2138	2935	
Colo. Springs #2	Beaver Creek	541	541	541
Colo. Springs #4	Beaver Creek	1411	1310	1387
Colo. Springs #5	Beaver Creek	1658	1658	1255
Colo. Springs #7	Beaver Creek	101	120	13
Colo. Springs #8	Beaver Creek	263	308	501
Lake Moraine	Beaver Creek	606	606	606
Mt. Pisgah	Four Mile Creek	599	599	599
Rosemont Penrose	Beaver Creek	1709	1764	2318
Skaguay	Beaver Creek	1593	1593	1593
DeWeese Dye	Grape Creek	1568	4352	1495
Curiton	Springs	680		
Greenview	Fountain	4000		
H.O.P. Res.	Springs			
Pueblo Res.	Arkansas	22746	23655	30682.65
Hayden Beckwith	Greenhorn	300	280	347
Lake Minnequa	St. Charles	983	1135	981
Reservoir No. 2	St. Charles	2366	2345	2390
Reservoir No. 3	St. Charles	7848	7925	6894

AMOUNT OF ACRE FEET
OCTOBER 31, 1975

AMOUNT OF ACRE FEET
APRIL 1, 1975

AMOUNT OF ACRE FEET
NOVEMBER 1, 1974

NAME OF RESERVOIR	SOURCE	AMOUNT OF ACRE FEET NOVEMBER 1, 1974	AMOUNT OF ACRE FEET APRIL 1, 1975	AMOUNT OF ACRE FEET OCTOBER 31, 1975
Arnold Flood Water	Santa Clara		-0-	-0-
Bressan #1	Unnamed Arroya		-0-	-0-
Bressan #2	Unnamed Arroya		-0-	-0-
Brunelli #1&2	Bear Creek	-0-	10	10 est.
Butte	Cucharas	-0-	7	7
Chicosa #4&5	Huerfano	-0-	-0-	-0-
Coler (Martin Lake)	Cucharas	-0-	1878	2071
Cucharas Valley	Cucharas	748	-0-	-0-
Dotson	Chicosa Creek	-0-	-0-	-0-
Holita	Cucharas	540	200 est.	50est.
Huerfano Valley	Huerfano	-0-	1387.2	1804.63
La Joya	Cucharas	-0-	-0-	-0-
Maria Stevens	Cucharas	318	150	100 est
Martin Res.	Cucharas	1816	1878	2071
Mosco	Poison Canon	-0-	-0-	-0-
Orlando	Huerfano	861.5	-0-	-0-
Sharps Orchid	Cucharas	-0-	-0-	-0-
Sierra Blanca	Decker Creek	-0-	-0-	-0-
Sunnyside	Santa Clara	-0-	-0-	-0-
Valdez	Santa Clara	500	400 est.	100 est.
Vories	Cucharas	-0-	-0-	-0-
Wilson	Sheer Creek	-0-	-0-	-0-
Zan	Apache Creek	-0-	-0-	-0-
Adobe	Arkansas	--	-6-	-0-
Dye	Arkansas	--	-0-	-0-
Henry	Arkansas	--	-0-	-0-
Holbrook #1	Arkansas	--	7155	1007
Horse Creek	Arkansas	-0-	-0-	-0-
Hermosa	San Francisco Cr.	-0-	-0-	-0-
Monument	Middle Fork Purgatoire	1266	1274	1168
Model	Purgatoire	-0-	-0-	-0-
North	Trinchera	3019	2618.3	2917.5
Russel	Chanley Arroya	30	40	40

AMOUNT OF ACRE FEET
OCTOBER 31, 1975

AMOUNT OF ACRE FEET
APRIL 1, 1975

AMOUNT OF ACRE FEET
NOVEMBER 1, 1974

SOURCE

NAME OF RESERVOIR

John Martin	Arkansas	--	8586	-0-
Nee Noshee	Arkansas	--	-0-	-0-
Nee Skah	Arkansas	--	-0-	-0-
Thurston	Arkansas	--	-0-	-0-
Two Buttes	Two Buttes Cr.	11115	10861	8385

LIVESTOCK WATER TANKS

Applications Filed and Approved:

Water District 10.....	1
Water District 11.....	-0-
Water District 12.....	18
Water District 13.....	-0-
Water District 14.....	4
Water District 15.....	-0-
Water District 16.....	2
Water District 17.....	4
Water District 18.....	12
Water District 19.....	40
Water District 66.....	2
Water District 67.....	4
TOTAL.....	87

All stock pond permits or applications are forwarded to our district Water Commissioners for site investigation and then, approval.

Last year (1974) the district had 58 applications.

WATER RIGHTS TABULATION

Protests to the tabulation are still coming in, despite passage of legislation putting off last years deadline. Tabulation in Division 2 is generally in good shape, the biggest questions remain in the area of water rights that were decreed in other than original adjudications and have been administered (apparently since the court awarded them) as tho they were decreed in the original, instead of a supplemental adjudication. The cases in the Arkansas appear to differ from the case in Water District 47, Division 6, in several areas so the precedent may not be generally applicable, as there has been some interest shown, but no case or formal protest as such, yet.

Cards for the W-cases are being prepared as the Judge's rulings come down, so far no printout has been made, nor has an attempt been made to integrate past S.B. 81 water rights into the pre S.B. 81 tabulation.

Abandonments compiled by the water commissioner's were, to say the least, less than satisfactory. In some cases water rights were abandoned that had been transferred, and in some cases no apparent reason could be found, there appeared throughout a suspicion that some of the commissioners were not as knowledgeable in the water rights of their districts as at first believed, at the very least a physical visit to and a record search must be made of each water right abandoned, which may require the services of at least one man.

Cases Filed In The Water Court

The following shows the number of cases filed from Nov., 1969 through June 1974, and also the number of claims.

Note: The number of cases is an accurate figure; however, the number of claims is an estimated figure as it is impossible to determine from some applications just how many claims are made, but I state that the figures are reasonably close.

<u>1969</u>			
<u>MONTH</u>	<u>CASE NUMBERS</u>	<u>CASES</u>	<u>CLAIMS</u>
November	W-1 thru W-18	18	22
December	W-19 thru W-22	4	4
	Sub-total.....	<u>22</u>	<u>26</u>

<u>1970</u>			
January	None	0	0
February	W-23	1	4
March	W-24 thru W-28	5	25
April	W-29 thru W-31	3	7
May	W-32 Thru W-41	10	14
June	W-42 thru W-60	19	105
July	W-61 thru W-66	6	22
August	W-67 thru W-74	8	15
September	W-75 thru W-76	2	5
October	W-77 thru W-78	2	2
November	W-79 thru W-87	9	11
December	W-88 thru W-114	27	62
	Sub-total.....	<u>92</u>	<u>272</u>

<u>1971</u>			
January	W-115 thru W-123	9	40
February	W-124 thru W-146	23	51
March	W-147 thru W-195	49	90
April	W-196 thru W-241	46	80
May	W-242 thru W-266	25	36
June	W-267 thru W-317	51	117
July	W-318 thru W-348	31	77
August	W-349 thru W-375	27	76
September	W-376 thru W-395	20	38
October	W-396 thru W-421	26	66
November	W-422 thru W-460	39	90
December	W-461 thru W-507	47	83
	Sub-total.....	<u>393</u>	<u>844</u>

<u>MONTH</u>	<u>CASE NUMBERS</u>	<u>CASES</u>	<u>CLAIMS</u>
<u>1972</u>			
January	W-508 thru W-543	36	110
February	W-544 thru W-609	66	167
March	W-610 thru W-701	92	252
April	W-702 thru W-811	110	307
May	W-812 thru W-1144	333	680
June	W-1145 thru W-3440	2298	5385
July	W-3441 thru W-3679	239	467
August	W-3680 thru W-3780	101	202
September	W-3781 thru W-3815	35	86
October	W-3816 thru W-3852	37	97
November	W-3853 thru W-3875	25	49
December	W-3876 thru W-3893	23	53
		3395	7855

<u>1973</u>			
January	W-3894 thru W-3911	19	47
February	W-3912 thru W-3922	11	35
March	W-3923 thru W-3940	26	87
April	W-3941 thru W-3954	18	72
May	W-3955 thru W-3968	19	670
June	W-3969 thru W-3983	20	119
July		19	70
August		21	64
September		14	28
October		12	460
November		16	42
December		12	234
		207	1928

<u>1974</u>			
January		8	68
February		20	633
March		10	66
April		11	95
May		6	7
June		13	821
		68	1690

Total cases filed from 1969 to June 30, 1974.....4109

Approximate number of claims same period.....10928

Cases Terminated by the Water Court.

<u>Month</u>	<u>Number of cases terminated</u>
May 1970	2
June	1
July	4
August	17
September	5
October	5
November	1
December	15
Total.....	<u>50</u>

January 1971	0
February	4
March	16
April	9
May	15
June	13
July	47
August	46
September	26
October	43
November	25
December	30
Total.....	<u>274</u>

January 1972	2
February	31
March	25
April	39
May	38
June	1
July	5
August	76
September	47
October	40
November	167
December	110
Total.....	<u>581</u>

Cases Terminated by the Water Court.

<u>Month</u>	<u>Number of cases terminated</u>
January 1973	95
February	110
March	151
April	81
May	104
June	174
July	83
August	139
September	121
October	216
November	178
December	78
Total.....	<u>1530</u>

January 1974	137
February	77
March	157
April	99
May	112
June	152
Total.....	<u>734</u>

Cases Terminated 1970.....	50
Cases Terminated 1971.....	274
Cases Terminated 1972.....	581
Cases Terminated 1973.....	1530
Cases Terminated 1974.....	734
Total cases terminated to Dec. 31, 1974.....	3169

UNDERGROUND WATER
IRRIGATION DIVISION NO. 2

Irrigation Division 2 composed of Water Districts 10, 11, 12, 13, 14, 15, 16, 17, 18, 19 and 66 and 67 has, of this date 17,556 wells of all types in operation. Types of use are domestic, stock, domestic and stock, commercial, industrial, irrigation, irrigation and stock, and lastly, municipal. Tabulation, showing the number of each type of well in each district is illustrated by the following table.

The principal aquifer area extends thru a 150 mile reach of the Arkansas River valley extending from Pueblo to the Kansas State line. This is a valley-fill aquifer which is adjacent to, underlies, and is in hydraulic connection with the Arkansas River. The aquifer consists of unconsolidated deposits of gravel, sand silt and clay. It ranges from one to 14 miles in width and covers an area of about 500 square miles in parts of Pueblo, Otero, Crowley, Bent and Prowers Counties. The aquifer fills a "u-shaped" trough cut into the bedrock, which consists of shale, limestone, and sandstone of Cretaceous age. About two million acre feet of water is stored in the valley-fill deposits. Summary of the hydrologic character is shown below;

<u>UNIT</u>	<u>THICKNESS</u>	<u>PHYSICAL CHARACTER</u>	<u>HYDROLOGIC CHARACTER</u>
Dune Sand	0 - 100'	Very fine to coarse, Poorly sorted sand.	Commonly not saturated, but transmits water readily from the surface to underlying aquifers. Source of water for a few domestic and stock wells.
Valley-fill deposits	0 - 300'	Boulders, Cobbles, gravel, sand, silt, and clay. Generally grades from fine sand near the surface to coarse sand and gravel at the base.	Principal source of water for irrigation, public supply, and industrial wells. Irrigation well yields are as much as 3,150 gpm and average 650 gpm. Aquifer furnishes water to 1,348 irrigation wells.
Pierre Shale	0-2,200'	Shale and sandy shale.	Low-permeability confining bed; acts as a barrier to vertical movement of ground water. Not known to yield water to wells.
Niobrara Formation	0 - 700'	Chalky and marly Limestone and calcareous shale.	Low permeability to confining bed; acts as a barrier to vertical movement of ground water. A few stock wells tapping fractured limestone yield less than 5 gpm.

<u>UNIT</u>	<u>THICKNESS</u>	<u>PHYSICAL CHARACTER</u>	<u>HYDROLOGIC CHARACTER</u>
Carlile Shale	0 - 200'	Calcareous Shale, Limestone, and sandstone.	Low-permeability confining bed; acts as a barrier to vertical movement of ground water. Not known to yield water to wells
Greenhorn Limestone	0 - 150'	Limestone and Chalky Shale	Low-permeability confining bed; acts as a barrier to vertical movement of ground water. A few stock wells tapping fractured limestone yield less than 5 gpm.
Graneros Shale	0 - 200'	Gypsiferous Shale and sandstone.	Low-permeability confining bed; acts as a barrier to vertical movement of ground water. Not known to yield water to wells.
Dakota Sandstone	75 - 235'	Sandstone, sandy shale, siltstone and shale.	Important source of water for domestic, stock and public water. Restricts vertical movement of water to and from the valley-fill deposits. Wells yield as much as 100 gpm and average 20 gpm.

GROUND-WATER WITHDRAWAL FROM THE
VALLEY FILL AQUIFER BY IRRIGATION WELLS.

(acre feet per year)

COUNTY	1964	1965	1966	1967	1968
Pueblo	25,000	16,000	23,000	19,000	21,000
Otero-Crowley	53,000	36,000	50,000	48,000	50,000
Bent	33,000	15,000	23,000	23,000	26,000
Prowers	74,000	45,000	34,000	42,000	55,000
Total	185,000	112,000	130,000	132,000	152,000

The above statistics are from a study made prior to the inception of the Rules and Regulations, and may have been based on a pumping season of a full 110 days. If the 1968 total withdrawal figure of 152,000 A.F. was based on full yield pumping for 110 days at 24 hours per day, the 1975 withdrawal would be 3/7 of that or 65,143 A.F.

SUMMARY OF WELLS
IRRIGATION DIVISION NO. 2

TYPE OF USE

WATER DISTRICT NO.	TYPE OF USE								TOTAL
	1	2	3	4	5	6	7	8	
10	2675	106	72	68	15	268	9	121	3334
11	861	11	3	56	8	40	7	22	988
12	440	63	24	17	18	61	3	10	636
13	86	35	8	-0-	-0-	47	13	4	193
14	1446	387	109	61	47	1080	82	49	3261
15	480	51	23	4	1	148	17	17	741
16	186	170	16	6	28	91	4	-0-	501
17	524	643	116	43	32	1278	51	73	2760
18	27	51	3	-0-	-0-	14	16	9	120
19	73	194	16	-0-	16	23	9	4	335
66	105	277	32	9	15	604	9	18	1069
67	183	1452	516	38	13	1678	11	123	4015
TOTAL	7066	3440	938	302	193	5333	231	450	17,953

Type of Use (1) Domestic (2) Stock (3) Domestic & Stock (4) Commercial (5) Industrial (6) Industrial (7) Irrigation & Stock (8) Municipal

ARKANSAS RIVER COMPACT

IRRIGATION DIVISION NO. 2

Storage began on Nov. 1, 1974 and continued until April 1, 1975, when 8,633 A.F. was accumulated, this was run out in 12 days and no further storage was collected until Nov. 1, 1975.

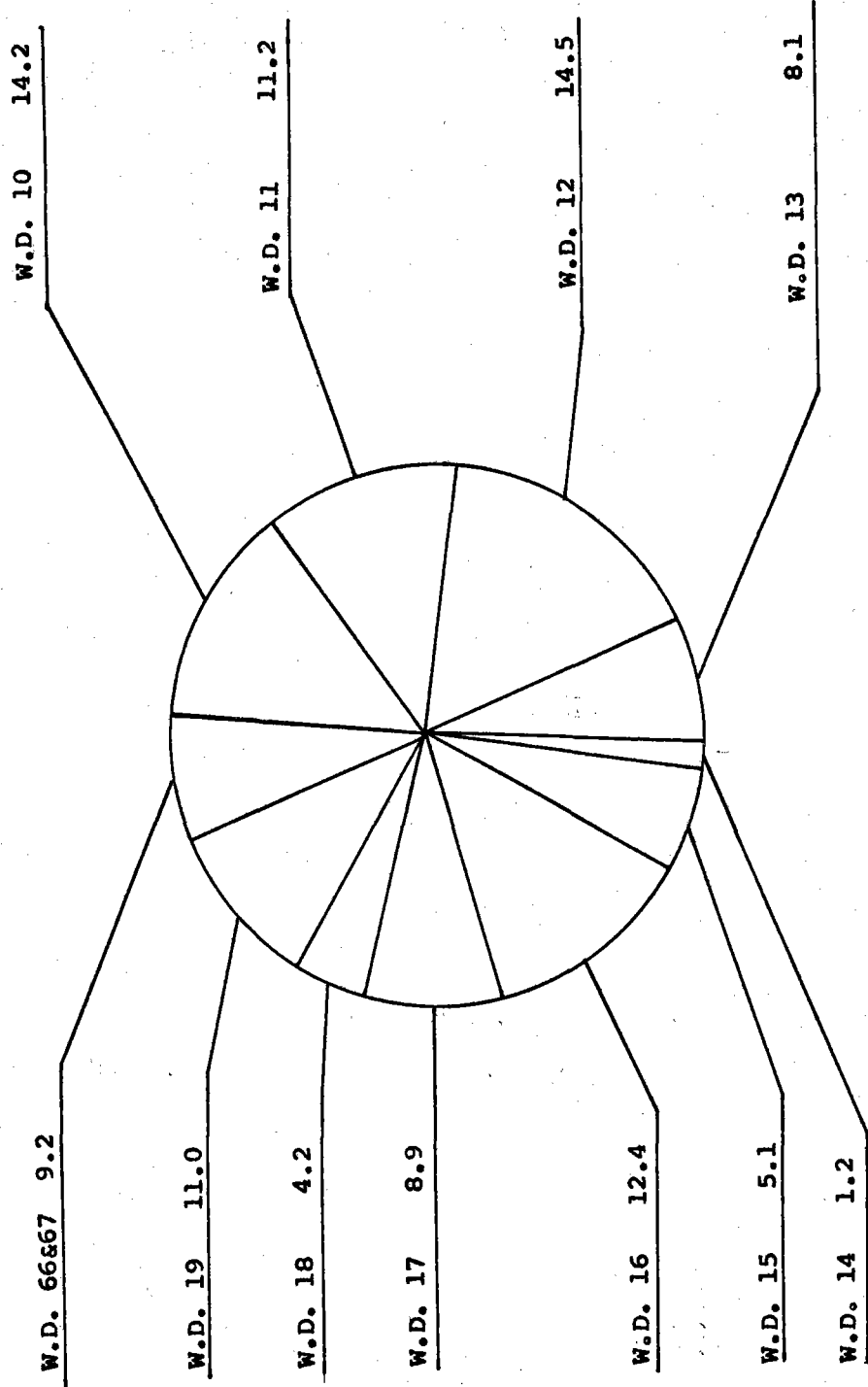
No particular problems were encountered with the compact administration.

The perennial complaints of some down stream ditches concerning the definition of the term "inflow" were heard again this year, but as usual nothing came of them.

The transfer of some Catlin shares to a permanent pool in John Martin will tentatively be heard by Judge Gobin, in February of 1976.

The compact administration has, as yet, taken no stand on the filing of a minimum flow in Gageby Creek, by the Colorado Water Conservation Board.

IRRIGATION DIVISION NO. 2
 Water District Mileage
 July 1, 1974 to June 30, 1975



Total Miles for Water Districts: 176,606

PERSONNEL

Division No. 2

DIVISION OF WATER RESOURCES

Fiscal Year 7/1/74 to 6/30/75

NAME	POSITION	DISTRICT	MONTHS WORKED	MILEAGE
Rudy Styduhar	Division Engineer	Division 2	Full Time	-0-
Robert W. Jesse	Assistant Division Engineer			1,033
	Division Engineer beginning 8/11/74	Division 2	Full Time	15,613 *
Robert Ermel	Water Commissioner	Dist. 10	Full Time	16,407
George Wichmann	Deputy Water Commissioner	Dist. 10	5 months	8,408
James Everett	Water Commissioner	Dist. 11	Full Time	12,848
John Farwell	Deputy Water Commissioner	Dist. 11	5 1/2 months	3,301
Larry Brown	Deputy Water Commissioner	Dist. 11	6 months	3,540
Jack McDonough	Water Commissioner	Dist. 12	Full Time	13,361
Tom Young	Deputy Water Commissioner	Dist. 12	5 months	4,707
Neal McGee	Deputy Water Commissioner	Dist. 12	6 months	7,409
Gayle Patterson	Water Commissioner	Dist. 13	Full Time	8,495
Don Stuart	Deputy Water Commissioner	Dist. 13	5 1/2 months	5,660
Cecil Shepard	Special Contract Water Commissioner	Dist. 14	25 days	887
Frank Perko	Administrative Asst.	Dist. 14	Full Time	7,518* 1,286

NAME	POSITION	DISTRICT	MONTHS WORKED	MILEAGE
Ralph Barnhart	Water Commissioner	Dist. 15	Full Time Till Sept. 1, 1974	1,523
Larry Young	Water Commissioner	Dist. 15	Full Time Start Feb. 1, 1975	7,275
Robert Brgoch	Water Commissioner	Dist. 16	Full Time	12,346
Augustine Garcia	Water Commissioner	Dist. 16	11 months	9,429
William Pattie	Water Commissioner	Dist. 17	Full Time	15,584
George Watson	Deputy Water Commissioner	Dist. 17	6 days	-0-
Leonard Trujillo	Water Commissioner	Dist. 18	3 1/2 months Start March 1, 1975	4,599
George Stakich	Water Commissioner	Dist. 18	5 months Till Nov. 15, 1975	2,739
Henry Marques	Water Commissioner	Dist. 19	Full Time	15,773
John Cusimano	Deputy Water Commissioner	Dist. 19	64 days	2,878
Manuel Vigil	Deputy Water Commissioner	Dist. 19	20 days	621
Lanie Hackett	Water Commissioner	Dist. 66&67	Full Time	15,609
Robert Clodfelter	Deputy Water Commissioner	Dist. 66&67	1 month	494

NAME	POSITION	DISTRICT	MONTHS WORKED	MILEAGE
Kenneth Cooper	Hydrographer	Division 2	Full Time	4,266 *
Edward Blank	Hydrographer	Division 2	Full Time	4,860 *
David DeYoung	Hydrographer	Division 2	Full Time	14,974 *
James Kasic	Hydrographer	Division 2	Full Time	11,981 *
Gary Iargent	1042 Water Commissioner	Division 2	Full Time	394
Juanita Tafoya	Administrative Clerk Typist	Division 2	Full Time	11,136 *
				None

Paid Mileage 176,606

Mileage for State Vehicles 70,348

* Mileage in State owned vehicle.

SOUTHERN COLORADO
WATER CONSERVANCY DISTRICT
905 HIGHWAY 50 WEST
P.O. BOX 440
PUEBLO, COLORADO 81002

OFFICERS

Thomas W. McCurdy, President, Rt. 1 Box 165, Olney Springs, Colo. 81062
Keith Webb, Vice President, P.O. Box 992, La Junta, Colo. 81054
Leon C. Hook, Treasurer, 804 Rudd, Canon City, Colo. 81212
Charles L. Thomson, General Manager, P.O. Box 440, Pueblo, Colo. 81002
Charles J. Beise, Attorney for the District, 1536 First National Bank
Building, Denver, Colo. 80201
George E. Everett, Secretary, 9750 County Road 160, Rainbow Blvd.,
Salida, Colorado 81201

DIRECTORS

Dave Ciruli, Rt. 4 Box 793, Pueblo, Colorado 81004
Dr. Wendell Hutchinson, D.V.M., Rainbow Blvd., Salida, Colorado 81201
John P. Huebsch, 27 Oak Ave., Colorado Springs, Colo. 80906
John E. Javernick, 3205 Hale, Canon City, Colorado 81212
Frank Milenski, RR. 1, La Junta, Colorado 81050
Raymond D. Nixon, 2519 Prairie Road, Colorado Springs, Colo. 80909
Ralph Adkins, P.O. Box 316, Pueblo, Colorado 81003
Kenneth Carter, Rt. 1, Ordway, Colorado
Robert E. Northrup, 501 Steward, Lamar, Colorado 81052
Alvin Spady, Rt. 2, Las Animas, Colorado

WATER RELATED ORGANIZATIONS

IRRIGATION DIVISION NO. 2
Pueblo, Colorado

A.J. Anderson Irrigation Company, Charles Haberman, Rt. 1, La Junta, Colo. 81050
Avondale Water & Sanitation District, Mrs. Gloria Vialpando, President, P.O. Box 77
Avondale, Colorado 81022
Beaver Park Water Company, Penrose, Colorado 81240
Beehive Water Association, John F. Watters, Cheraw, Colorado 81030
Bent's Fort Water Association, Walter V. Henning, President, 105 Ash, La Junta,
Colorado 81050
Bessemer Irrigating Ditch Company, Bill Mullin, 711 Thatcher Building, Pueblo,
Colorado 81003
Canon City Oil Creek Ditch Company, L. Peterson, President, Canon City, Colo. 81212
Canon City Heights Irrig. Co., E.B. Woodford, Sec. 609 River, Canon City, Colo.
Canon City Hydraulic Irrig. Co., E. Carpenter, President, Harrison Bldg. Canon City,
Colorado 82121
Catlin Canal Co., Wayne W. Whittaker, P.O. Box 352, Rocky Ford, Colo. 81067
Collier Ditch Co., John Stahl, Rt. 1 Box 25, Boone, Colo. 81025
Crowley County Water Assoc., Harley Ruscher, President, P.O. Box 487, Ordway,
Colorado 81062
DeWeese Dye Ditch Company, Raymond Koch, 1400 S. 2nd. St., Canon City, Colo.
East End Water Company, Harry Froese, Secretary, Rt. 2, La Junta, Colo. 81050
Eureka Water Company, Ralph Read, P.O. Box 5, Rocky Ford, Colo. 81067
Excelsior Ditch Company, Joe Mahaney, Superintendent, Rt. 2 Box 231, Pueblo,
Colorado 81004
Fayette Water Assoc. John Schweizer, Jr., Secretary, Rt. 1 Box 311, Rocky Ford,
Colorado, 81067
Fort Lyons Canal Company, Al Putnam, Las Animas, Colorado 81054
Fremont County Ditch Company, Lola McBeth, 105 S. Pikes Peak Ave., Florence,
Colorado 81226
Hasty Water Company, Earl Eckerett, Hasty, Colorado 81044
Highland Water & Supply Co., Frank Vance, President, Blende, Colorado 81004
Hilltop Water Company, Jerry Clevenger, Secretary, Rocky Ford, Colo. 81067
Holbrook Center Soft Water, J.B. Shenk, Secretary, Cheraw, Colo. 81030
Holbrook Mutual Irrigation Company, Neal Marlin, Rt. 2, La Junta, Colo. 81050
Las Animas Consolidated Ditch Company, Delbert Wallace, Rt. 1 Box 19,
Las Animas, Colorado 81054
Lombard Village Water Association, Levi Martinez, Attorney at Law, Thatcher Bldg.,
Pueblo, Colorado 81003
May Valley & Pleasant Valley Water Assoc., Leonard Courkamp, Wiley, Colorado 81092
McClave Water Association, Harold Falconburg, McClave, Colorado 81057
Newdale-Grand Valley Company, Ernest P. Campbell, President, Rt. 2 Box 292,
Rocky Ford, Colorado 81067
Otero Canal Company, Earl Beegles, Box 980 La Junta, Colorado 81050
Oxford-Farmers Ditch Company, George Henrie, Fowler, Colorado 81039
Park Center Water District, George Smith, P.O. Box 860, Canon City, Colo. 81212
Patterson Valley Water Company, David E. Smith, Treasurer, Rt. 1 Rocky Ford, Colo.
Penrose Water District, Orlin Fields, Sec. Treas. 1102 So. S. St., Penrose, Colo.
96 Pipeline Company, Warren B. Arbuthnot, President, Ordway, Colo. 81063
Pueblo Board of Water Works, P.O. Box 400, Pueblo, Colo.
Riverside Water Company, Edward T. Jung, Secretary, Rt. 1 Box 100, Rocky Ford,
Colorado 81067

Rocky Ford Ditch Company, George A. Watson, Rt. 1, Manzanola, Colo. 81058
Salt Creek Water & Sanitation District, Endelecio Garcia, 1022 Palo Alto,
Pueblo, Colo. 81004
Security Water District, Thomas K. Remple, 231 Security Blvd., Security,
Colorado
South Canon Ditch Company, John Griffin, President, P.O. Box 213, Canon City,
Colorado 81212
Southside Water Association, John Evers, President, RR 2, La Junta, Colo. 81050
South Swink Water Company, Fred Trimble, Secretary, La Junta, Colo. 81050
St. Charles Mesa Water Association, Lee Simpson, Manager, Roselawn Road,
Pueblo, Colorado 81004
Stratmoor Hills, J. Fred Abrahamson, 311 Catillima Drive, Stratmoor Hills, Colo.
Sugar City Pipeline Company, Henry Herman, Jr., Secretary, Sugar City, Colo. 81076
Twin Lakes Reservoir & Canal Company, Thomas McCurdy, Rt. 1 Box 165, Olney Springs,
Colorado 81062
Union Ditch Company, Erick A. Roberts, 105 E. Main, Florence, Colo. 81226
Valley Water Company, Albert Stover, Secretary, Manzanola, Colo. 81058
Vroman Water Company, Albert Stover, Secretary, Manzanola, Colorado 81058
West Grand Valley Water, Inc., Blain Mallott, Box 182, Rocky Ford, Colo. 81067
West Holbrook Pipeline Company, Roy Wadleigh, Secretary, Rt. 2 Box 302, La Junta,
Colorado
West Pueblo Ditch Company, Ted Donley, Superintendent, Hyde Park Dairy,
P.O. Box 397, Pueblo, Colo. 81002
Widefield Homes Water and Sanitation, J. C. Perry, Sr., 3 Widefield, Widefield,
Colorado 80911

