

STATE OF COLORADO
IRRIGATION DIVISION NO. 2
PUEBLO

Nov. 27, 1962

F. C. SNYDER
IRRIGATION DIVISION ENGINEER
EON DURANT BLDG.,
P. O. BOX 1423

SUBJECT:

Mr. J. E. Whitten
State Engineer
Denver, Colo.

Dear Sir,

I herewith submit my report as Division Engineer of Division Number 2 for the year of 1962.

A heavy snowfall during the winter promised a heavy runoff with chances of severe flooding during the spring thaw. However, the weather was such that each time the snow melt began to approach the flood stage it cooled off and reduced the flow. This happened several times until the runoff from the snow melt extended into July making water available for most ditches over a more extended period than for many years. The peak flow at Pueblo was on July 5, at 5:30 P. M., with gage height of 4.15, which equals 3250 sec. ft. At Canon City the peak arrived at 6 P. M. July 2, at gage height of 4.90 which equals about 3500 sec. ft. The total river flow at Pueblo for the water year was 613,500 acre feet, being 120 percent of the average flow of 511,100 acre feet.

General winter storage was in effect during the months of November, December, January and one-half of February, with six days in March. This together with the carry-over put the reservoirs in fairly good condition. There was no storage in mountain reservoirs during the snow melt period due to the above mentioned weather conditions.

Few and scattered rains during the growing season caused no floods and added little to the available supply.

Precipitation for Pueblo totaled 8.70 inches with only 4.93

inches during the five growing months. (This compares with an annual average of 11.87 inches. At Lamar the rainfall totaled 13.67, with 9.85 inches during the growing season. Las Animas showed a total of 9.69 inches and 7.91 inches fell during the five growing months.

No floods of any size came through Canon City or Pueblo. One or two small rises came down the Fountain River which was dry, or nearly so, most of the year.

Trans-mountain diversions totaled 68,362 acre feet for the year. Twin Lakes derived 55,226 acre feet of this amount, which allowed them to divert a total of 73,267 acre feet onto their land and still carry over 21,545 acre feet in Twin Lakes reservoir, plus 4,316 acre feet in Meredith reservoir, for a good start on next year.

The reservoir carry-over for 1961 was 113,431 acre feet. This year's carry-over is 80,485 acre feet, of which only 52,889 acre feet is for irrigation use against 79,667 acre feet last year.

John Martin reservoir gates were closed at 8 A. M., Nov. 1, 1961, at which time the reservoir was empty. Water in storage as of 12 A. M., Mar. 27, 1962, was 34,019 acre feet. On April 19, water was released for Colorado and Kansas ditches when storage was at 36,000 acre feet. The reservoir was emptied at noon May 5, 1962. Gates were closed at 7:45 A. M., May 18, due to extra down the Arkansas River. Release of 250 sec. ft. was started to the Amity Canal at 8:30 A. M., May 19, and the reservoir was emptied May 31. The gates were again closed at 9:15 A. M., July 25, and the water was all gone by Aug. 11, and remained empty to Nov. 1st, when 100 sec. ft. of domestic water was demanded by six ditches below the dam in district #67. The gates were not closed so this demand could be filled. Demand was made for 100 sec. ft. to be passed by the ditches above John Martin Reservoir. The Fort Lyon Canal was called on to furnish enough to make this

amount available at the outlet of the dam. This they refused to do, as they claimed the "River Flow" was that amount naturally entering the reservoir without passing any water from above. However, some extra water did get to the reservoir and the Secretary of the Arkansas Compact Administration informed me on Nov. 9th that there was water in storage. This eliminated the demand on the upper river ditches. Cold, stormy weather caused the gates to be closed at 9 A. M., Nov. 17, 1962. At latest report there were 1374 acre feet in storage.

The question of passing water to make up the 100 sec. ft. at the outlet of John Martin Reservoir will probably have to be settled by the courts. This should be pushed to an early decision.

No new law suits have been filed during the year on questions of administrations.

The Fryingpan trans-mountain diversion project has finally been authorized by Congress and a \$500,000 investigation appropriation has been obtained. Work was started on the Ruedi Reservoir foundation investigation by core drilling in October. Work will be started on construction when and if appropriation is obtained.

Crops were very good under older ditches and those who had reservoir water to apply. Tonage was heavy and prices fairly good.

The Graneros Pipeline law suit seems to be dropped, and the Beaver Park case is in the process of attempted compromise.

The distribution of water in Division No. 2 for the year was 1,867,692 acre feet to a total of 496,796 acres of land. This was 3.76 acre feet per acre of ground irrigated.

Tables of trans-mountain diversions, reservoir storage by months, acres of land irrigated and water used are attached hereto.

Thanking all the State Employees and water users for
their splendid cooperation during the year, I am,

Respectfully yours,

E. C. Snyder

E. C. Snyder Division Engineer, Div. No. 2

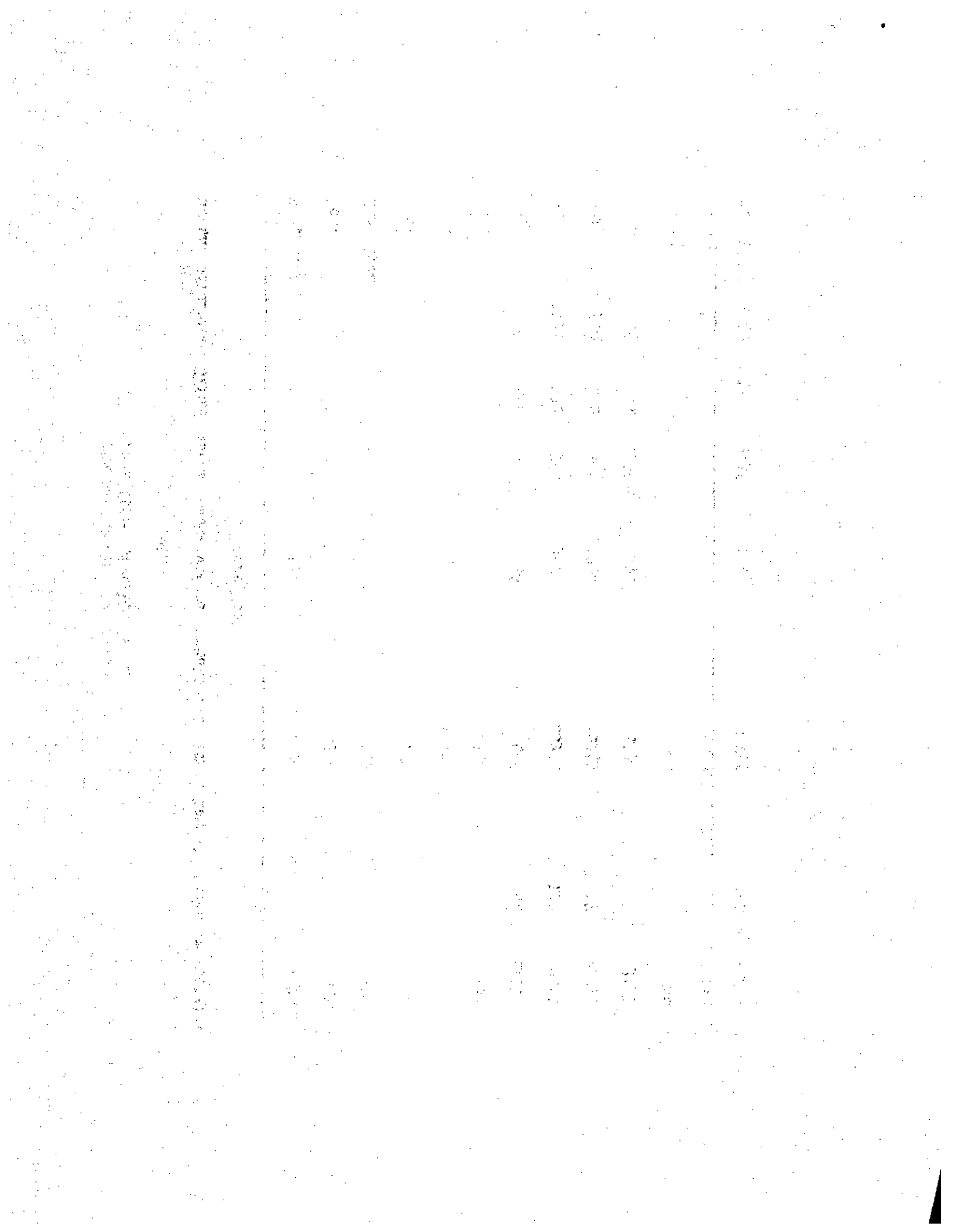
December 7, 1911

TRANS-MOUNTAIN DIVERSIONS
Irrigation Division No. 2.

1962

Month Columbine Ewing Wurtz Busk-Ivanhoe Tunnel Twin Lakes Tunnel Larkspur totals.
In Acre Feet.

Nov. 1961				150	1238			1388
Dec.					508			508
Jan. 1962					252			252
Feb.					180			180
Mar.					252			252
Apr.				220	716			936
May	246	486	950	936	8486	42		11146
June	1130	716	1366	3662	23352	118		30344
July	320	236	374	1794	16244	7		18975
Aug.	46	92	66	178	3152	1		3535
Sept.					846			846
Oct.					529			529
Totals	1742	1530	2756	6940	55755	168		68891



TABULATION of WATER COMMISSIONER'S ANNUAL REPORTS
for IRRIGATION SEASON of 1962.

IRRIGATION DIVISION No. 2.

Dist. No.	First day water was used from natural stream	Last day water was used from natural stream	Number of acre feet water used by canals for season	Total number acres irrigated 1962
10	Nov. 1, 1961	Oct. 31, 1962	59,147	11,965
11	Mar. 28, 1962	Oct. 31, 1962	165,307	26,610
12	Nov. 1, 1961	Oct. 31, 1962	355,775	22,744
13	Apr. 21, 1962	Aug. 30, 1962	33,917	19,209
14	Nov. 1, 1961	Oct. 31, 1962	291,927	110,060
15	Nov. 1, 1961	Oct. 31, 1962	21,204	4,701
16	Nov. 1, 1961	Oct. 31, 1962	71,336	44,464
17	Nov. 1, 1961	Oct. 31, 1962	602,210	154,770
18	Nov. 1, 1961	Aug. 3, 1962	6,880	4,875
19	Nov. 1, 1961	Oct. 31, 1962	80,374	26,909
66	Jan. 1, 1962	Oct. 31, 1962	1,815	465
67	Nov. 1, 1961	Oct. 31, 1962	177,800	70,024
TOTALS			1,867,692	496,796