

Division 1 Annual Report



Home Supply Head Gate

Irrigation Water Year 2013

TABLE OF CONTENTS

- WATER SUPPLY AND ADMINISTRATION 2
 - Water Supply Conditions 2
 - September 2013 Flood..... 3
 - Decennial Abandonment List..... 4
 - Well Administration - South Platte River Basin 4
 - Well Administration - Republican River Basin 4
 - Compact Administration 5
- COMMUNITY INVOLVEMENT 5
- FLOOD PHOTOGRAPHS..... 6
 - District 1 6
 - District 2 7
 - District 3 8
 - District 4 9
 - District 5 10
 - District 64 11
 - Hydro Pictures..... 12
- TABLES..... 14
 - Table 1 - Storage Comparison 14
 - Table 2 - Transmountain Diversion Summary 15
 - Table 3 - Reservoir Storage Summary 16
 - Table 4 - Water Court Activities..... 29
 - Table 5 - Main Steam Call Record 30
 - Table 6 - Staffing and Statistics 45
 - Table 7 – Organizational Chart..... 46

WATER SUPPLY AND ADMINISTRATION

Water Supply Conditions

Irrigation Year 2013 in Division One will be remembered for the “13 Flood” that began the week of September 9, 2013. Of course the entire year consisted of much more than this one catastrophic event.

November 2012 through January 2013 was generally dryer and warmer than normal. This resulted in lower than average flows at both the Kersey and Julesburg stream gages with Kersey at approximately 92% of the historic mean for the period while Julesburg was at approximately 18% of its historic mean. The dryer than average conditions led, in turn, to storage or recharge calls that were generally more senior than typical for the period. Reservoir storage levels that were about 76% of average for the period, which (when combined with the low stream flows) led to concern that many reservoirs would not fill before irrigation season began. To top it all off, snowpack was at only 60% of average snow water equivalent by the end of January (the typical mid-point in snow water equivalent accumulation for the year). This created further concerns of a second poor water supply year in a row in 2013.

February through April heralded the movement from dry and warm conditions to wetter and cooler conditions in Division One. Even with the wetter conditions, stream flows at both Kersey and Julesburg remained below average. Flows at Kersey were approximately 71% of the historic mean for the period and Julesburg flows were at approximately 16% of the historic mean. The calls for water by vested water rights continued throughout this period, and moved from slightly more junior than normal in February to more senior than normal by April (including South Platte Compact calls both early and late in April). The wetter conditions did allow some improvement in reservoir storage to the

point that the end of April overall storage was at 87% of average with the large plains irrigation reservoirs all basically full by the end of April - a much better situation than was expected at the end of January. Drought and snowpack conditions also improved through this period with the end of April snowpack at 91% of average snow water equivalent and drought conditions improving from a range of D4 to D2 over the basin at the beginning of February to almost exclusively to a D2 to D1 range by the end of April.

Schizophrenic is probably the best way to describe the weather during the May through July, 2013. For example, Denver tied the record low temperature on May 2nd of 19^oF, and then tied the record high on May 14th of 88^oF. June was warm and dry while July was cooler and wetter. Unfortunately, stream flows throughout the period remained below average with Kersey at approximately 29% of average and Julesburg at only about 8% of average. As might be expected with the low stream flows, the mainstem river calls throughout the period were more senior than normal, though the bump in snowpack to 107% of average snow water equivalent on May 10 did produce fairly normal calls for June on many tributaries. However, there was no “free river” at all within the South Platte basin. Overall reservoir storage managed to climb to 91% of average by the end of May, but went downhill from there to 88% of average by the end of July. This was concerning as storage water is essential in August and September and the end of July reading represented storage at 67% of capacity, compared to the average of 77% of capacity. The drought index also indicated the schizophrenic nature of this period with the end of May in the D2 to D0 range, the end of June in the D3 to D1 range, and the end of July back to most of the basin in the D2 to D0 range.

The August through October period saw the one of the most extreme shifts in water rights administration ever seen in the South Platte basin as a result of the “13

Flood”, which will be discussed in a separate section. August and the first week of September were warmer than normal with, generally, the foothills and mountains wetter than normal and the plains dryer than normal. As could be expected the August stream flows at the Kersey and Julesburg index gages continued the below to well below historic trend that began in March of 2012. The Kersey gage monthly mean stream flow was 55% of the historic mean flow and Julesburg was 21% of the historic mean. However, because of an early August storm event, the mainstem river calls in Water Districts 1 and 2 were able to go fairly junior before returning to a more typical August call pattern while the lower end of the mainstem was typical to slightly more senior and the tributary calls were typical to slightly more junior. September river calls prior to the “13 flood” were somewhat more senior than normal, but from the flood to the end of October most of the South Platte basin was in a free river. The exceptions were the upper end of the Poudre (under call most of October) and the mainstem above metro Denver (under call for the last week and a half of October). The end of August overall reservoir storage in the South Platte basin was at 87 % of the end of August average. At the end of August the northern mountains/foothills area had been moved from a D0 rating to no drought rating at all, which didn’t help during the second week of September. Most of the rest of northeast Colorado had moved to the D0 to D1 category with a few relatively small areas of D2 and a small sliver of D3 on the Colorado-Kansas/Nebraska border.

October 2013 was occupied almost exclusively with recovery from the “13 Flood” with good progress made in many areas. Thankfully, there were no significant precipitation events during October in the South Platte basin to complicate recovery efforts. The Kersey gage monthly mean stream flow was 310% of the historic October mean and the Julesburg flow was 517% of the historic

mean. By the end of October, all the diversion structures along the mainstem that divert water to the major reservoirs had been repaired enough to permit diversions to storage. This is good news as it, combined with the good flow conditions, should provide a significant amount of water in storage by the beginning of the 2014 irrigation season.

September 2013 Flood

September 2013 will be remembered in the South Platte as the “13 flood” in much the same way the “65 flood” and the “35 flood” are remembered. During the week of September 9 through 16 some areas of the Front Range in the South Platte basin received as much as 15 inches of precipitation with most areas receiving at least 2 inches.

As with the historic floods just mentioned, the “13 flood” caused significant damage to homes and businesses as well as water diversion structures and stream flow gages in an area more-or-less bounded by the Cache la Poudre River on the north, Clear Creek on the south, the continental divide on the west and Greeley on the east, though damage extended along the South Platte River east to the Colorado - Nebraska border. It was initially feared that the loss of human life would be in the double or triple digits. Though any loss of life is tragic, thankfully the final toll was that only 7 people lost their lives in the “13 flood”.

From a water structures standpoint, most of the damage was on Boulder Creek, Saint Vrain Creek, Little Thompson River, Big Thompson River, and the South Platte mainstem downstream of the St. Vrain-South Platte confluence. Certainly there was damage in other areas, but the damage along the Front Range tributaries was catastrophic in terms of stream gages and diversion structures. The damage was less severe downstream on the South Platte only because it took time for the flood “wave” to migrate downstream and

some structure owners were able to take preventative measures to lessen damage to their structures. Even with that, a total of 221 diversion structures, 27 dams, and 29 stream gage stations were damaged or destroyed. It is expected that a majority of these structures will be ready to operate by June 1, 2014.

Total September stream flows at the Kersey index gage are being estimated forensically as the gage was lost prior to the peak of the flood “wave” reaching that location the evening of Friday, September 13. The last transmitted flow was 28,800 cfs. The USGS stream flow gage at Fort Morgan did survive the event with a peak flow of 50,600 cfs the evening of September 14. The peak flow for this event at the Julesburg gage was 21,400 cfs during the afternoon of September 18. (The hydrograph of the Julesburg gage is quite interesting as, because that area received much less precipitation than the Front Range, it shows almost no increase in a flow of 80 to 90 cfs until the day before the peak when it begins a very rapid rise.)

Decennial Abandonment List

By the end of Irrigation Year 2013 all but 3 protests to the 2010 Abandonment List (Case No. 11CW263) were resolved. Initially 33 protests covering 49 water rights were received by the water court prior to the June 30, 2012 deadline. By October 31, 2013 the only remaining unsettled abandonment list cases involved 3 cases covering 6 surface water rights in Water District 49. A trial on one of these protests (Case No. 12CW111) involving 3 rights and a related non-2010 Abandonment List case (Case No. 11CW186) was held from April 15 through 22, 2013. The water court issued a ruling on December 16, 2013 finding that the 3 rights that were the subject of 12CW111 were not abandoned. An appeal on 1 of the 3 rights in 12CW111 was filed with the Colorado Supreme Court in early 2014.

Well Administration - South Platte River Basin

The South Platte Well Measurement Rules (Case No. 11CW292) were finalized in March 2013. Initially eight entities filed statements of opposition to the rules case. However, due to numerous settlement meetings and outstanding work by the Division One staff and especially Lead Assistant Division Engineer Corey DeAngelis, stipulations were reached with all objectors - though the final stipulation was reached late on the last business day before trial. The Rules themselves became effective on December 31, 2013.

The well enforcement program had a busy year sending out approximately 144 install flow meter and cease and desist orders. Additionally, a well use compliance case (case no. 13CW3000) and two contempt of court cases (case nos. 06CW250 and 07CW4) were successfully litigated in water court over the course of the year. As a result of this year’s annual meter read program, the Well Team identified twelve wells that appeared to have operated against Cease & Desist Orders in IY 2013. The Well Team also continued efforts in support of the 2010 Abandonment List, providing field inspections and in some instances providing affidavits and testimony for several of the 33 Protest Cases filed in Water Court.

Well Administration - Republican River Basin

The Republican River Basin Groundwater Measurement Rules (Rules) administration program continues making progress towards the completion of an inventory of all wells within the scope of the Rules. This was a busy year with a majority of the measurement device accuracy verification tests due in the basin. Approximately 2350 measurement verification forms were received and processed, with the introduction of email submittals assisting the administration. Enforcement efforts continued with the Greeley office and

Republican River well team distributing approximately 310 Notice of Violation and Orders to Cease & Desist. Additionally, 875 Notices for Expiring Meters and 550 Annual Usage Reporting Forms were mailed to well users in the basin. The Republican River well team also continued efforts in support of the 2010 Abandonment List Protest Cases in the Republican basin by providing field inspections as well as affidavits and testimony for at least one case before the Water Court.

In addition, the Republican River well team has been busy assisting the Designated Basins Team in the administration of well permit volume limits by posting and documenting Orders on approximately 40 wells that exceeded their annual limitation in the 2013 Irrigation Year. These Orders are being administered by the Designated Basins Team in Denver, and require the reduction of the annual pumping limits for 2014 Irrigation Year by the amount over-pumped in 2013.

Compact Administration

Division One is responsible for the administration of the South Platte Compact, the Laramie River Decree, and the Sand Creek Agreement (including the 1997 Addendum) to meet the requirements of those respective documents. There were 146 days of South Platte Compact call between April 1 and September 14, 2013 (the call was not on after the magnitude of the September '13 Flood became clear). Interestingly, even though the water supply picture in Irrigation Year 2013 was different than Irrigation Year 2012, there were 146 days of South Platte Compact call in 2012 as well.

Irrigation Year 2013 diversions in the Laramie River basin were all in compliance with the U.S. Supreme Court decree in *Wyoming v. Colorado*. Division One did host a tour of the Laramie River basin at the request of water officials from the Wyoming State Engineer's Office in October 2013. Division One also complied

with the terms of the Sand Creek Agreement in 2013.

The Republican River Compact continues to be administered by staff in both Division One and the Denver Office in conjunction with the Republican River Water Conservation District. Much of the work on this Compact has focused on the proposed Compact Compliance Pipeline with discussions and negotiations between Colorado, Kansas, and Nebraska occurring during all of IY 2013 without a final resolution with all parties. Progress was made toward the end of 2013 with a strong probability that the three states would reach agreement to allow operation of the Compact Compliance Pipeline on a provisional basis in 2014 to obtain data and analyze actual operations. To aid in Compact Compliance, the State Engineer continues to curtail surface water rights junior to the Compact.

COMMUNITY INVOLVEMENT

Division One personnel are actively involved in multiple aspects of issues important to the water community. Division One staff attend, participate in, and present at Ditch Company and Conservancy District meetings as requested. Staff also participate in one time meetings of water user, realtor, and homeowner groups as well as multiple meetings related to high groundwater issues in the Sterling and LaSalle/Gilcrest areas and public meetings on the House Bill 12-1278 - South Platte Alluvial Aquifer Study. Personnel also participate in ongoing meetings like the South Platte Basin Round Table and The River Runs Through It group on the Cache la Poudre River. Finally staff continues to participate in group and individual meetings related to examining alternatives to the traditional "buy and dry" approach to water transfers from irrigation to municipal use.

FLOOD PHOTOGRAPHS

District 1



South Platte River at Masters

District 2



Highway 34 East of Greeley

District 3



Larimer Weld Diversion

District 4



Big Thompson River at Mouth of Canyon

District 5



St. Vrain River near LaFarge Gravel Pits

District 64



Highway 138 Near Crook

Hydro Pictures



Gaging Station at North Fork Big Thompson River at Drake



Gaging Station at Balzac



Gaging Station at Masters

TABLES

Table 1 - Storage Comparison

Runoff Forecast

SOUTH PLATTE RIVER BASIN
Reservoir Storage (1000 AF) - End of January

RESERVOIR	USABLE CAPACITY	USABLE STORAGE		AVERAGE
		THIS YEAR	LAST YEAR	
ANTERO	19.9	16.9	15.2	15.3
BARR LAKE	30.1	25.9	13.9	24.0
BLACK HOLLOW	6.5	3.6	2.3	2.8
BOYD LAKE	48.4	33.5	15.6	27.8
BUTTON ROCK	16.2	13.9	14.3	
CACHE LA POUUDRE	10.1	0.5	3.1	6.4
CARTER	108.9	59.9	69.6	78.3
CHAMBERS LAKE	8.8	7.0	1.4	3.1
CHEESMAN	79.0	74.5	43.9	63.7
COBB LAKE	22.3	19.7	11.8	11.7
ELEVEN MILE	98.0	100.3	99.4	95.9
EMPIRE	36.5	28.8	26.0	22.6
FOSSIL CREEK	11.1	9.2	9.0	6.9
GROSS	41.8	33.7	31.2	26.3
HALLIGAN	6.4	4.4	3.9	4.5
HORSECREEK	14.7	11.8		10.4
HORSETOOTH	149.7	94.8	73.2	94.7
JACKSON	26.1	26.0	23.2	23.1
JULESBURG	20.5	15.2	15.5	16.9
LAKE LOVELAND	10.3	8.5	3.0	6.8
LONE TREE	8.7	7.6	5.4	6.4
MARIANO	5.4	4.3	2.4	3.0
MARSHALL	10.0	8.8	5.7	5.6
MARSTON	13.0	7.5	12.5	5.9
MILTON	23.5	19.5	6.3	15.8
POINT OF ROCKS	70.6	56.4	40.8	51.1
PREWITT	28.2	22.3	6.9	15.7
RIVERSIDE	55.8	44.3	31.5	37.3
SPINNEY MOUNTAIN	49.0	43.9	24.6	29.0
STANDLEY	42.0	40.0	28.0	35.7
TERRY LAKE	8.0	5.6	4.8	5.0
UNION	13.0	11.7	5.5	10.0
WINDSOR	15.2	12.4	9.6	8.3

Information taken from Colorado Basin Outlook Report, February 1, 2014

SOUTH PLATTE RIVER BASIN
WATER SNOWPACK

WATERSHED	NUMBER OF DATA SITES	THIS YEAR AS % OF	
		LAST YEAR	AVERAGE
BIG THOMPSON BASIN	7	122	60
BOULDER CREEK BASIN	6	131	63
CACHE LA POUUDRE BASIN	10	121	59
CLEAR CREEK BASIN	4	125	65
SAINT VRAIN BASIN	3	116	59
UPPER SOUTH PLATTE BASIN	16	135	44
SOUTH PLATTE RIVER BASIN	46	126	57

*Information taken from Colorado Basin Outlook Report, February 1, 2014.

Table 2 - Transmountain Diversion Summary

2013 TRANSMOUNTAIN DIVERSION SUMMARY - INFLOWS
(November 2012 - October 2013)

RECIPIENT								SOURCE		
WD	ID	NAME	STREAM	10 YEAR AVG		CURRENT YEAR		WD	ID	STREAM
				AF	DAYS	AF	DAYS			
3	4604	WILSON SUPPLY DITCH	CACHE LA POUFRE RIVER	1,200	73	970	65	48	4604	SAND & DEADMAN CR.
3	4608	DEADMAN DITCH	CACHE LA POUFRE RIVER	474	67	401	69	48	4608	DEADMAN CREEK
3	4606	BOB CREEK DITCH	CACHE LA POUFRE RIVER	102	37	91	34	48	4606	NUNN CREEK
3	4607	COLUMBINE DITCH	CACHE LA POUFRE RIVER	0	0	0	0	48	4607	DEADMAN CREEK
3	4600	LARAMIE-POUDRE TUNNEL	CACHE LA POUFRE RIVER	8,562	101	9,,475	91	48	4600	LARAMIE RIVER
3	4605	SKYLINE DITCH	CACHE LA POUFRE RIVER	32	6	0	0	48	4605	LARAMIE RIVER
3	4602	CAMERON PASS DITCH	CACHE LA POUFRE RIVER	57	33	79	41	47	4602	MICHIGAN RIVER
3	4603	MICHIGAN DITCH	CACHE LA POUFRE RIVER	2,035	347	2493	350	47	4603	MICHIGAN RIVER
3	4601	GRAND RIVER DITCH	CACHE LA POUFRE RIVER	8,853	163	8,757	146	51	4601	COLORADO RIVER
4	4634	ADAMS TUNNEL	BIG THOMPSON RIVER	123,415	333	102,236	321	51	4634	COLORADO RIVER
6	4655	MOFFAT TUNNEL	SOUTH PLATTE RIVER	27,334	360	28,723	365	51	4655	FRASER RIVER
7	4625	BERTHOUD PASS DITCH	CLEAR CREEK	330	99	278	107	51	4625	FRASER RIVER
7	4626	VIDLER TUNNEL	CLEAR CREEK	344	64	211	31	36	4626	MONTEZUMA CREEK
7	4682	STRAIGHT CREEK TUNNEL	CLEAR CREEK	141	365	119	365	36	4682	STRAIGHT CREEK
8	653	ROBERTS TUNNEL	SOUTH PLATTE RIVER	38,089	262	37,047	284	36	4684	BLUE RIVER
23	4611	BOREAS PASS DITCH	SOUTH PLATTE RIVER	69	56	51	43	36	4685	INDIANA CREEK
23	4612	HOOSIER PASS DITCH	ARKANSAS RIVER	4,159	185	5,207	175	36	4683	BLUE RIVER
23	4490	AURORA HOMESTAKE	SOUTH PLATTE RIVER	16,167	256	11,592	181	37	4644	HOMESTAKE CREEK

Table 3 - Reservoir Storage Summary

2012-2013 RESERVOIR STORAGE SUMMARIES BY DISTRICT

WATER DISTRICT 1

WD	ID	RESERVOIR NAME	SOURCE STREAM	AMOUNT IN STORAGE (AF)				
				MINIMUM		MAXIMUM		END OF YEAR
				AF	DATE	AF	DATE	AF
1	3009	CORNISH PLAINS RESERVOIR	CACHE LA POUFRE RIVER	752	04/30/13	1,733	07/31/13	1,733
1	3400	VANCIL	SOUTH PLATTE	480	08/31/13	2,978	10/31/13	2,978
1	3570	BIJOU #2	SOUTH PLATTE	68	09/30/13	3,740	10/31/13	3,740
1	3592	HORSE CREEK RESERVOIR	HORSE CREEK	1,316	06/30/13	11,524	10/31/13	11,524
1	3609	PROSPECT RESERVOIR	PROSPECT CREEK	290	08/31/13	1,310	06/30/13	290
1	3651	RIVERSIDE	SOUTH PLATTE	9,273	09/30/13	62,128	04/30/13	19,679
1	3816	EMPIRE	SOUTH PLATTE	1,668	09/30/13	37,709	04/30/13	7,538
1	3817	JACKSON	SOUTH PLATTE	3,020	09/30/13	27,258	04/30/13	3,020
1	3871	PAWNEE RAW WATER RESERVOIR 1	GROUNDWATER	2,038	11/30/12	2,826	09/30/13	2,784
1	3902	LORD RESERVOIR #4	SOUTH PLATTE	330	04/30/13	330	4/30/13	330
1	4000	STAGECOACH RESERVOIR	SOUTH PLATTE	0	10/31/13	25	08/31/13	0
		TOTALS		19,235		151,561		53,616

2012-2013 RESERVOIR STORAGE SUMMARIES BY DISTRICT

WATER DISTRICT 2

WD	ID	RESERVOIR NAME	SOURCE STREAM	AMOUNT IN STORAGE (AF)				
				MINIMUM		MAXIMUM		END OF YEAR
				AF	DATE	AF	DATE	AF
2	3050	SOUTH RESERVOIR COMPLEX	SOUTH PLATTE	46	07/31/13	3,406	11/30/12	1,294
2	3083	WELTON RESERVOIR	CLEAR CREEK	6,401	4/30/13	9,095	10/31/13	9,095
2	3325	THORNTON COOLEY PIT	SOUTH PLATTE	2,303	11/30/12	3,913	09/30/13	3,880
2	3361	KEN MITCHELL LAKES	SOUTH PLATTE	707	02/28/13	2,425	09/30/13	2,415
2	3375	QUINCY RESERVOIR	SOUTH PLATTE	1,726	11/30/12	2,298	10/31/13	2,298
2	3379	AURORA RESERVOIR	SOUTH PLATTE	28,564	11/30/12	31,679	01/31/13	28,564
2	3699	WEST GRAVEL LAKES COMBINED	SOUTH PLATTE	1,645	12/31/12	2,730	04/30/13	2,462
2	3700	TANI LAKES COMBINED	SOUTH PLATTE	12,151	03/31/13	15,051	04/30/13	14,537
2	3837	OASIS RES/BARR	SOUTH PLATTE	5,302	08/31/13	27,162	05/31/13	22,275
2	3858	LOWER LATHAM	SOUTH PLATTE	4,116	08/31/13	5,787	04/30/13	5,144
2	3861	GREAT WESTERN	WALNUT CREEK	422	11/01/12	2,378	04/30/13	1,958
2	3876	MILTON	SOUTH PLATTE	1,472	12/31/12	23,163	04/30/13	19,719
2	3903	STANDLEY	CLEAR CREEK	28,835	12/31/12	42,384	06/30/13	40,612
2		OTHERS		4,924		8,751		7,484
		TOTALS		98,614		180,222		161,737

2012-2013 RESERVOIR STORAGE SUMMARIES BY DISTRICT

WATER DISTRICT 3

WD	ID	RESERVOIR NAME	SOURCE STREAM	AMOUNT IN STORAGE (AF)				
				MINIMUM		MAXIMUM		END OF YEAR
				AF	DATE	AF	DATE	AF
3	3676	LONG DRAW/GRAND RIVER	LONG DRAW CREEK	1,220	08/31/13	6,413	06/30/13	3,912
3	3678	MOUNTAIN SUPPLY RESERVOIR #20	JOE WRIGHT RESERVOIR	3,672	10/31/13	7,116	07/31/13	3,672
3	3679	CHAMBERS	JOE WRIGHT CREEK	914	03/31/13	7,156	10/31/13	7,156
3	3683	BARNES MEADOW RESERVOIR	BARNES MEADOWS CREEK	959	03/31/13	2,349	09/30/13	2,349
3	3697	NORTH POUDE #2/DEMMELE LAKE	N FK POUDE RIVER	1,716	11/30/12	3,854	05/31/13	1,940
3	3698	NORTH POUDE #5/BEE LAKE	N FK POUDE RIVER	2,076	08/31/13	5,892	10/31/13	5,892
3	3699	NORTH POUDE RESERVOIR #6	N FK POUDE RIVER	2,729	08/31/13	5,603	10/31/13	5,603
3	3702	NORTH POUDE #3/HACKEL LAKE	N FK POUDE RIVER	1,843	08/31/13	2,781	05/31/13	2,188
3	3704	NORTH POUDE #4	N FK POUDE RIVER	336	10/31/13	497	11/30/12	336
3	3707	INDIAN CREEK/MTN SUPPLY #16	INDIAN CREEK	948	08/31/13	1,374	07/31/13	1,206
3	3708	MOUNTAIN SUPPLY RESERVOIR #18	BOX ELDER CREEK	499	08/31/13	712	10/31/13	712
3	3712	HALLAGAN/NORTH POUDE #16	N FK POUDE RIVER	1,811	08/31/13	6,428	05/31/13	2,069
3	3713	SEAMAN/MILTON SEAMAN	N FK POUDE RIVER	3,494	12/31/12	5,008	09/30/13	5,008
3	3715	PARK CREEK	PARK CREEK	2,564	03/31/13	6,466	05/31/13	6,268
3	3716	NORTH POUDE #15	N FK POUDE RIVER	902	08/31/13	5,331	05/31/13	4,939
3	3725	DOUGLASS	CACHE LA POUDE RIVER	3,824	12/31/12	8,320	05/31/13	7,099
3	3726	WORSTER	SHEEP CREEK	214	08/31/13	3,750	06/30/13	589
3	3727	WINDSOR RESERVOIR #8	CACHE LA POUDE RIVER	3,489	08/31/13	9,364	05/31/13	8,323
3	3728	NO. 8 ANNEX	CACHE LA POUDE RIVER	1,015	08/31/13	3,208	06/30/13	2,976
3	3730	COBB LAKE	CACHE LA POUDE RIVER	6,415	08/31/13	15,140	10/31/13	15,140
3	3732	HORSETOOTH	DIXON CANYON CREEK	68,513	11/30/12	126,414	06/30/13	90,372
3	3735	CURTIS	CACHE LA POUDE RIVER	380	08/31/13	524	11/30/12	484
3	3736	ROCKY RIDGE/WATER SUPPLY #1	CACHE LA POUDE RIVER	3,283	03/31/13	3,544	06/30/13	3,443
		SUBTOTALS		112,816		237,244		181,676

2012-2013 RESERVOIR STORAGE SUMMARIES BY DISTRICT

WATER DISTRICT 3 (CONTINUED)

WD	ID	RESERVOIR NAME	SOURCE STREAM	AMOUNT IN STORAGE (AF)				
				MINIMUM		MAXIMUM		END OF YEAR
				AF	DATE	AF	DATE	AF
		BALANCE FROM PREVIOUS PAGE		112,816		237,244		181,676
3	3737	WATER SUPPLY #2 & #3	CACHE LA POUFRE RIVER	699	08/31/13	3,920	10/31/13	3,920
3	3738	WINDSOR RESERVOIR	CACHE LA POUFRE RIVER	6,911	08/31/13	16,604	05/31/13	14,813
3	3739	WATER SUPPLY #4	WATER SUPPLY RES #2 & #3	339	12/31/12	704	10/31/13	704
3	3740	KLUVER	CACHE LA POUFRE RIVER	189	03/31/13	656	10/31/13	656
3	3742	LONG POND/WATER SUPPLY #5	CACHE LA POUFRE RIVER	1,988	03/31/13	2,632	10/31/13	2,632
3	3744	BLACK HOLLOW	CACHE LA POUFRE RIVER	3,337	12/31/12	5,936	06/30/13	4,253
3	3745	DOWDY LAKE RESERVOIR	SOUTH PINE CREEK	720	03/31/13	934	05/31/13	889
3	3751	SOUTH GRAY RESERVOIR	BOX ELDER CREEK	184	11/30/12	651	05/31/13	213
3	3770	WINDSOR LAKE	CACHE LA POUFRE RIVER	2,273	04/30/13	2,974	06/30/13	2,964
3	3772	SEELEY	CACHE LA POUFRE RIVER	836	05/31/13	1,144	09/30/13	1,133
3	3774	FOSSIL CREEK	FOSSIL CREEK	7,162	11/30/12	10,970	03/31/13	9,065
3	3775	TIMNATH	DUCK SLOUGH	1,395	11/30/12	10,952	06/30/13	9,460
3	3780	CLAYMORE	CACHE LA POUFRE RIVER	197	09/30/13	835	05/31/13	775
3	3786	WOOD	ROLLARD DRAW	635	11/30/12	2,647	06/30/13	3,009
3	3804	WARREN	CACHE LA POUFRE RIVER	698	03/31/13	2,100	05/31/13	1,243
3	3805	TERRY/LARIMER WELD	CACHE LA POUFRE RIVER	4,393	11/30/12	7,978	06/30/13	5,367
3	3814	PANHANDLE RESERVOIR	PANHANDLE CREEK	1,017	11/30/12	1,017	11/30/12	1,017
3	3952	RAWHIDE	CACHE LA POUFRE RIVER	14,966	08/31/13	15,900	05/31/13	15,111
3		OTHERS		4,970		10,444		7,557
		TOTALS		165,725		336,242		266,457

2012-2013 RESERVOIR STORAGE SUMMARIES BY DISTRICT

WATER DISTRICT 4

WD	ID	RESERVOIR NAME	SOURCE STREAM	AMOUNT IN STORAGE (AF)				
				MINIMUM		MAXIMUM		END OF YEAR
				AF	DATE	AF	DATE	AF
4	3659	LOVELAND MUNICIPAL	BIG THOMPSON	4,948	03/31/13	6,780	10/31/13	6,780
4	4110	BOYD LAKE	BIG THOMPSON	15,752	11/30/12	33,386	10/31/13	33,386
4	4116	DONATH	BIG THOMPSON	0	11/30/12	1,153	04/30/13	829
4	4123	HORSETOOTH RESERVOIR	BIG THOMPSON	1,708	11/30/12	7,343	05/31/13	2,268
4	4131	LOVELAND GREELEY RESERVOIR	BIG THOMPSON	4,967	11/30/12	12,230	05/31/13	11,222
4	4133	LOVELAND LAKE	BIG THOMPSON	589	09/30/13	1,343	10/31/13	1,343
4	4134	BOEDECKER LAKE/MARINO	BIG THOMPSON	2,243	08/31/13	5,493	05/31/13	4,712
4	4136	LON HAGLER	BIG THOMPSON	3,848	08/31/13	4,893	10/31/13	4,893
4	4137	LONE TREE	BIG THOMPSON	2,594	08/31/13	8,623	05/31/13	8,034
4	4146	WELCH LAKE	BIG THOMPSON	1,355	08/31/13	5,322	10/31/13	5,322
4	4156	BOULDER & LARIMER/ISH	LITTLE THOMPSON	1,432	08/31/13	4,672	05/31/13	1,700
4	4166	HERTHA RESERVOIR	DRY CREEK HERTHA	628	08/31/13	1,634	05/31/13	1,108
4	4513	CARTER	BIG THOMPSON	41,217	10/31/13	105,018	4/30/13	41,217
4		OTHERS		1,782		3,589		3,377
		TOTALS		83,063		201,479		126,191

2012-2013 RESERVOIR STORAGE SUMMARIES BY DISTRICT

WATER DISTRICT 5

WD	ID	RESERVOIR NAME	SOURCE STREAM	AMOUNT IN STORAGE (AF)				
				MINIMUM		MAXIMUM		END OF YEAR
				AF	DATE	AF	DATE	AF
5	3905	UNION	ST. VRAIN	4,106	12/31/12	11,582	10/13/13	11,582
5	4010	BUTTON ROCK	ST. VRAIN	12,705	04/30/13	16,197	6/30/13	14,274
5	4015	GOLD LAKE	JIM CREEK	368	03/31/13	607	09/30/13	420
5	4020	BEAVER POND	BEAVER CREEK	112	07/31/13	1,658	06/30/13	1,747
5	4032	HIGHLAND #2	ST. VRAIN	972	08/31/13	3,226	05/31/13	1,380
5	4037	HIGHLAND #1	ST. VRAIN	391	09/30/13	895	05/31/13	428
5	4038	HIGHLAND #3	ST. VRAIN	474	11/30/12	1,491	05/31/13	723
5	4063	PLEASANT VALLEY	ST. VRAIN	2,256	08/31/13	3,076	03/31/13	3,076
5	4065	MCCALL RESERVOIR	ST. VRAIN	415	03/31/13	479	05/31/13	479
5	4067	OLIGARCHY RESERVOIR #1	ST. VRAIN	1,096	11/30/12	1,737	05/31/13	1,640
5	4071	FOOTHILLS	ST. VRAIN	585	11/30/12	2,977	09/30/13	2,954
5	4072	CLOVER BASIN RESERVOIR	ST. VRAIN	460	11/30/12	596	07/31/13	571
5	4073	MCINTOSH	ST. VRAIN	289	08/31/13	1,950	9/30/13	1,917
5	4076	LEFT HAND PARK	LEFT HAND CREEK	678	06/30/13	1,412	11/30/12	1,228
5	4077	ALLEN LAKE RESERVOIR	LEFT HAND CREEK	0	11/30/12	704	06/30/13	704
5	4081	LAGERMANN	LEFT HAND CREEK	630	08/31/13	781	09/30/13	772
5	4379	NEW THOMAS RESERVOIR	HOWLETT GULCH	1,357	01/31/13	2,122	10/31/13	2122
5	4488	LEFT HAND VALLEY	LEFT HAND CREEK	571	12/31/12	1,626	09/30/13	1,300
5	4515	BOULDER	BOULDER CREEK	6,855	03/31/13	10,270	10/31/13	10,270
		TOTALS		34,320		63,386		57,587

2012-2013 RESERVOIR STORAGE SUMMARIES BY DISTRICT

WATER DISTRICT 6

WD	ID	RESERVOIR NAME	SOURCE STREAM	AMOUNT IN STORAGE (AF)				
				MINIMUM		MAXIMUM		END OF YEAR
				AF	DATE	AF	DATE	AF
6	3998	GOOSE HAVEN RESERVOIR COMPLEX	BOULDER CREEK	1,144	03/31/13	1,647	11/30/12	1,611
6	4172	BARKER	BOULDER CREEK	8,342	03/31/13	11,320	05/31/13	10,802
6	4173	BASELINE	BOULDER CREEK	2,976	11/30/12	5,117	07/31/13	3,882
6	4178	HILLCREST	BOULDER CREEK	1,752	02/28/13	1,128	09/30/13	2,086
6	4180	LEGGETT	BOULDER CREEK	1,262	02/28/13	1,542	09/30/13	1,510
6	4185	PANAMA	BOULDER CREEK	780	12/31/12	4,250	05/31/13	2,500
6	4187	SIX MILE	BOULDER CREEK	900	11/30/12	1,350	04/30/13	1,000
6	4199	GROSS	SOUTH BOULDER CREEK	25,792	04/30/13	41,712	09/30/13	40,438
6	4212	MARSHALL	SOUTH BOULDER CREEK	5,209	11/30/12	9,510	05/31/13	7,788
6	4230	VALMONT	SOUTH BOULDER CREEK	6,374	02/28/13	7,246	09/30/13	7,150
6	4238	SILVER	NORTH BOULDER CREEK	1,938	04/30/13	3,997	09/30/13	3,854
6	4489	GOOSE	NORTH BOULDER CREEK	1,036	11/30/12	1,036	11/30/12	1,036
6		OTHERS		2,878		4,565		3,924
		TOTALS		60,383		94,420		87,581

Boulder Reservoir is now reported in Water District 5 Reservoirs

2012-2013 RESERVOIR STORAGE SUMMARIES BY DISTRICT

WATER DISTRICT 7

WD	ID	RESERVOIR NAME	SOURCE STREAM	AMOUNT IN STORAGE (AF)				
				MINIMUM		MAXIMUM		END OF YEAR
				AF	DATE	AF	DATE	AF
7	3308	BLUNN	CLEAR CREEK	4,403	01/31/13	6,373	09/30/13	6,337
7	3324	RALSTON	RALSTON CREEK	7,361	01/31/13	10,615	09/30/13	9,795
7	3406	COORS B #3	CLEAR CREEK	1,891	04/30/13	3,056	06/30/13	3,056
7	3407	COORS B #4	CLEAR CREEK	4,000	11/30/12	4,000	11/30/12	4,000
7	3702	FAIRMOUNT	CLEAR CREEK	432	04/30/13	971	10/31/13	971
7	4030	GOLDEN RESERVOIR/WEST	CLEAR CREEK	1,087	11/30/12	1,343	09/30/13	1,340
7	4411	MAPLE GROVE	SOUTH CLEAR CREEK	676	12/31/12	1,081	10/31/13	1,081
7	4415	LONG LAKE RESERVOIR UPPER	RALSTON CREEK	669	03/31/13	1,467	05/31/13	840
7		OTHERS		2,273		3,112		2,734
		TOTALS		22,792		32,018		30,154

Welton Reservoir is now reported in Water District 2

2012-2013 RESERVOIR STORAGE SUMMARIES BY DISTRICT

WATER DISTRICT 8

WD	ID	RESERVOIR NAME	SOURCE STREAM	AMOUNT IN STORAGE (AF)				
				MINIMUM		MAXIMUM		END OF YEAR
				AF	DATE	AF	DATE	AF
8	3500	PLATTE CANON RESERVOIR	SOUTH PLATTE	172	01/31/13	876	09/30/13	791
8	3514	CHATFIELD	SOUTH PLATTE	16,677	07/31/13	27,428	02/28/13	26,331
8	3532	CHERRY CREEK	CHERRY CREEK	9,908	08/31/13	15,243	09/30/13	12,951
8	3832	MCLELLAN	DAD CLARK DITCH	5,049	06/30/13	5,866	02/28/13	5,101
8	3983	STRONTIA SPRINGS DVR DAM	SOUTH PLATTE	6,699	11/30/12	7,747	01/31/13	6,923
8	4097	SOUTH PLATTE LAKE	SOUTH PLATTE	1,146	11/30/12	6,073	05/31/13	5,715
		TOTALS		39,651		63,233		57,812

2012-2013 RESERVOIR STORAGE SUMMARIES BY DISTRICT

WATER DISTRICT 9

WD	ID	RESERVOIR NAME	SOURCE STREAM	AMOUNT IN STORAGE (AF)				
				MINIMUM		MAXIMUM		END OF YEAR
				AF	DATE	AF	DATE	AF
9	3501	MARSTON	SOUTH PLATTE	15,179	08/31/13	19,327	01/31/13	17,723
9	3815	SODA #1, #2	BEAR CREEK	703	08/31/13	1,469	04/30/13	948
9	3999	BEAR CREEK RESERVOIR	BEAR CREEK	1,686	11/30/12	11,482	09/30/13	1,961
9	4281	BOWLES	BEAR CREEK	994	10/31/13	2,062	04/30/13	994
9	4314	PATRICK	BEAR CREEK	1,136	05/31/13	1,167	07/31/13	1,146
9		OTHERS		1,233		3,412		3,162
		TOTALS		20,931		38,919		25,934

2012-2013 RESERVOIR STORAGE SUMMARIES BY DISTRICT

WATER DISTRICT 23

WD	ID	RESERVOIR NAME	SOURCE STREAM	AMOUNT IN STORAGE (AF)				
				MINIMUM		MAXIMUM		END OF YEAR
				AF	DATE	AF	DATE	AF
23	3904	ANTERO	S FK SOUTH PLATTE	15,116	02/28/13	17,942	09/30/13	17,901
23	3962	MONTGOMERY	MID FK SOUTH PLATTE	542	04/30/13	5,458	08/31/13	4,877
23	3965	ELEVEN MILE	MID FK SOUTH PLATTE	96,495	04/30/13	100,347	06/30/13	98,460
23	3981	JEFFERSON LAKE RESERVOIR	JEFFERSON LAKE	0	11/30/12	1,309	10/31/13	1,309
23	4013	SPINNEY MOUNTAIN	MID FK SOUTH PLATTE	24,881	03/31/13	47,781	10/31/13	47,781
23	4016	JAMES TINGLE RESEROIVR	MICHIGAN CREEK	48	03/31/13	391	09/30/13	329
23	4497	LONDON MINING & SMELTER RES	MOSQUITO CREEK	0	11/30/12	27	06/30/13	21
		TOTALS		137,082		173,255		170,678

2012-2013 RESERVOIR STORAGE SUMMARIES BY DISTRICT

WATER DISTRICT 64

WD	ID	RESERVOIR NAME	SOURCE STREAM	AMOUNT IN STORAGE (AF)				
				MINIMUM		MAXIMUM		END OF YEAR
				AF	DATE	AF	DATE	AF
64	3551	NORTH STERLING	SOUTH PLATTE	3,883	09/30/13	73,582	04/30/13	17,570
64	3552	PREWITT	SOUTH PLATTE	5,981	11/30/12	27,790	04/30/13	25,755
64	3906	JULESBURG	SOUTH PLATTE	7,536	08/31/13	22,888	03/31/13	10,850
		TOTALS		17,400		124,260		54,175

2012-2013 RESERVOIR STORAGE SUMMARIES BY DISTRICT

WATER DISTRICT 80

WD	ID	RESERVOIR NAME	SOURCE STREAM	AMOUNT IN STORAGE (AF)				
				MINIMUM		MAXIMUM		END OF YEAR
				AF	DATE	AF	DATE	AF
80	3550	CHEESMAN	S FK SOUTH PLATTE	43,917	01/31/13	78,689	10/31/13	78,689
80	3658	LININGER RESERVOIR	BEAVER CREEK	436	05/01/13	483	10/31/13	483
80	3828	ALTURA RESERVOIR	GENEVA CREEK	0	9/30/13	430	5/01/13	0
80	3829	WELLINGTON	N FK SOUTH PLATTE	1,220	08/31/13	2,464	10/31/13	2,464
		TOTAL		45,573		82,066		81,636

Table 4 - Water Court Activities

WATER COURT ACTIVITIES
Calendar Year 2013

New Applications made to water court this year.....237
 Referee Rulings Reviewed.....288
 Decrees Issued by Court this year.....349
 Dismissals.....19
 Vacate.....1

TYPES OF RULINGS

TYPE OF RULING	NUMBER OF CASES	NUMBER OF STRUCTURES
Findings of Diligence on Conditional Rights	82	324
Exchanges Adjudicated	23	72
Conditional Rights Made Absolute	31	81
Conditional Rights Cancelled	24	26
Surface Water Rights Adjudicated	11	24
Underground Water Rights Adjudicated	100	394
Water Storage Rights Adjudicated	27	42
Plans for Augmentation Adjudicated	54	251
Changes of Water Rights Adjudicated	55	335
Withdrawn	4	4
Recharge Sites	2	20
Amendments and Clerical Corrections	4	19
Abandonment of Structure	8	1140
Removed from Abandonment List	4	5
Alternate Points of Diversion	1	2
Direct Flow Rights	3	4
Consent Decrees	3	14
Preserve Natural Environment	4	4

Table 5 - Main Steam Call Record

CALLING PRIORITY 2012-2013

Start Date	End Date	Water Source	WDID	Structure Name	Appro Date	Admin No	Decreed Amt	Districts Affected	Set Comments
2012-10-23 08:00	2012-11-01 08:00	SOUTH PLATTE RIVER	103552	PREWITT RES	1929-12-31	31423.29219	34960.0000 0 AF	1, 2, 3, 4, 5, 6, 7	
2012-10-25 12:00	2012-11-01 08:00	SOUTH PLATTE RIVER	200802	BURLINGTON D RIVER HG	1909-01-13	21562.00000	900.0000 CFS	2, 8, 9, 23, 80	
2012-11-01 08:00	2012-11-04 08:00	SOUTH PLATTE RIVER	103817	JACKSON LAKE RES	1905-05-18	20226.00000	37709.0000 0 AF	1, 2, 3, 4, 5, 6, 7, 8, 9, 23,	BYPASS CALL FROM 0103816 - EMPIRE RES
2012-11-01 08:00	2012-11-08 08:00	SOUTH PLATTE RIVER	100687	NORTH STERLING CANAL	1908-06-15	21350.00000	300.0000 CFS	1	
2012-11-01 08:00	2012-11-08 08:00	SOUTH PLATTE RIVER	6403906	JULESBURG RES	1974-03-15	45364.00000	26.8000 CFS	1, 64	BYPASS CALL FROM 6400535 - SOUTH PLATTE DITCH
2012-11-04 07:04	2012-11-21 08:00	SOUTH PLATTE RIVER	103817	JACKSON LAKE RES	1902-04-01	19083.00000	500.0000 CFS	1, 2, 3, 4, 5, 6, 7, 8, 9, 23.	BYPASS CALL FROM 0100503 - RIVERSIDE CANAL
2012-11-08 08:00	2012-12-07 16:00	SOUTH PLATTE RIVER	6403906	JULESBURG RES	1915-08-01	26302.23953	411.0000 CFS	1, 64	BYPASS CALL FROM 0100687 - NORTH STERLING CANAL
2012-11-21 08:00	2012-12-29 08:00	SOUTH PLATTE RIVER	100513	JACKSON LAKE INLET DITCH	1905-05-18	20226.00000	37709.0000 0 AF	1,2,3,4,5 ,6,7,8,9, 23,80	BYPASS CALL FROM 0103816 - EMPIRE RES
2012-12-07 16:00	2012-12-10 08:00	SOUTH PLATTE RIVER	6403906	JULESBURG RES	1974-03-15	45364.00000	26.8000 CFS	1, 64	BYPASS CALL FROM 6400535 - SOUTH PLATTE DITCH
2012-12-10 08:00	2013-01-12 08:00	SOUTH PLATTE RIVER	100687	NORTH STERLING CANAL	1915-08-01	26302.23953	411.0000 CFS	1	
2012-12-29 08:00	2013-01-12 08:00	SOUTH PLATTE RIVER	100513	JACKSON LAKE INLET DITCH	1907-08-01	21031.00000	740.0000 CFS	1,2,3,4,5 ,6,7,8,9, 23,80	BYPASS CALL FROM 0100503 - RIVERSIDE CANAL
2013-01-12 08:00	2013-01-18 08:00	SOUTH PLATTE RIVER	100503	RIVERSIDE CANAL	1909-05-29	21698.00000	510.0000 CFS	1, 2, 3, 4, 5, 6, 7, 8, 9, 23,	BYPASS CALL FROM 0200817 - EVANS NO 2 DITCH

CALLING PRIORITY 2012-2013 (continued)

Start Date	End Date	Water Source	WDID	Structure Name	Appro Date	Admin No	Decreed Amt	Districts Affected	Set Comments
2013-01-12 08:00	2013-01-18 08:00	SOUTH PLATTE RIVER	100829	PREWITT INLET CANAL	1915-08-01	26302.23953	411.0000 CFS	1	BYPASS CALL FROM 0100687 - NORTH STERLING CANAL
2013-01-18 08:00	2013-01-21 12:00	SOUTH PLATTE RIVER	100829	PREWITT INLET CANAL	1910-05-25	22059.00000	695.0000 CFS	1, 2, 3, 4, 5, 6, 7, 8, 9, 23,	
2013-01-21 12:00	2013-02-11 08:00	SOUTH PLATTE RIVER	100503	RIVERSIDE CANAL	1909-05-29	21698.00000	510.0000 CFS	1, 2, 3, 4, 5, 6, 7, 8, 9, 23,	BYPASS CALL FROM 0200817 - EVANS NO 2 DITCH
2013-01-21 12:00	2013-02-05 08:00	SOUTH PLATTE RIVER	100829	PREWITT INLET CANAL	1910-05-25	22059.00000	695.0000 CFS	1	
2013-02-05 08:00	2013-03-11 08:00	SOUTH PLATTE RIVER	100687	NORTH STERLING CANAL	1915-08-01	26302.23953	411.0000 CFS	1	
2013-02-11 08:00	2013-03-08 08:00	SOUTH PLATTE RIVER	200802	BURLINGTON D RIVER HG	1909-01-13	21562.00000	900.0000 CFS	8, 9, 23, 80	
2013-02-11 08:00	2013-03-08 08:00	SOUTH PLATTE RIVER	100503	RIVERSIDE CANAL	1909-05-29	21698.00000	510.0000 CFS	1, 2, 3, 4, 5, 6, 7	BYPASS CALL FROM 0200817 - EVANS NO 2 DITCH
2013-03-08 08:00	2013-03-17 08:00	SOUTH PLATTE RIVER	100513	JACKSON LAKE INLET DITCH	1909-01-13	21562.00000	900.0000 CFS	1,2,3,4,5,6,7,8,9,23,80	BYPASS CALL FROM 0200802 - BURLINGTON D RIVER HG
2013-03-11 08:00	2013-03-18 08:00	SOUTH PLATTE RIVER	6400511	HARMONY DITCH 1	1910-05-25	22059.00000	695.0000 CFS	1, 64	BYPASS CALL FROM 0100829 - PREWITT INLET CANAL
2013-03-17 08:00	2013-03-18 08:00	SOUTH PLATTE RIVER	100513	JACKSON LAKE INLET DITCH	1909-05-29	21698.00000	510.0000 CFS	1,2,3,4,5,6,7	BYPASS CALL FROM 0200817 - EVANS NO 2 DITCH
2013-03-17 08:00	2013-04-01 08:00	SOUTH PLATTE RIVER	200802	BURLINGTON D RIVER HG	1909-01-13	21562.00000	900.0000 CFS	8, 9, 23, 80	BARR LAKE
2013-03-18 08:00	2013-03-26 08:00	SOUTH PLATTE RIVER	6400511	HARMONY DITCH 1	1910-05-25	22059.00000	695.0000 CFS	1,2,3,4,5,6,7,64	BYPASS CALL FROM 0100829 - PREWITT INLET CANAL
2013-03-26 08:00	2013-04-01 08:00	SOUTH PLATTE RIVER	100829	PREWITT INLET CANAL	1910-05-25	22059.00000	695.0000 CFS	1, 2, 3, 4, 5, 6, 7,64	

CALLING PRIORITY 2012-2013 (continued)

Start Date	End Date	Water Source	WDID	Structure Name	Appro Date	Admin No	Decreed Amt	Districts Affected	Set Comments
2013-04-01 08:00	2013-04-06 08:00	SOUTH PLATTE RIVER	100829	PREWITT INLET CANAL	1910-05-25	22059.00000	695.0000 CFS	1, 2, 3, 4, 5, 6, 7	
2013-04-01 08:00	2013-04-03 12:00	SOUTH PLATTE RIVER	200802	BURLINGTON D RIVER HG	1885-11-20	13108.00000	350.0000 CFS	8, 9, 23, 80	
2013-04-01 08:00	2013-04-05 12:00	SOUTH PLATTE RIVER	6499999	SOUTH PLATTE RIVER COMPACT	1897-06-14	17332.00000	120.0000 CFS	64	
2013-04-03 12:00	2013-04-09 12:00	SOUTH PLATTE RIVER	200802	BURLINGTON D RIVER HG	1899-05-01	18018.00000	38.0800 CFS	8, 9, 23, 80	BYPASS CALL FROM 0801002 - DENVER CONDUIT NO 20
2013-04-05 12:00	2013-04-06 12:00	SOUTH PLATTE RIVER	6499999	SOUTH PLATTE RIVER COMPACT	1974-03-15	45364.00000	26.8000 CFS	1, 64	BYPASS CALL FROM 6400535 - SOUTH PLATTE DITCH
2013-04-06 08:00	2013-04-12 08:00	SOUTH PLATTE RIVER	100829	PREWITT INLET CANAL	1905-05-18	26302.20226	612.4800 CFS	1, 2, 3, 4, 5, 6, 7	BYPASS CALL FROM 0100501 - EMPIRE DITCH
2013-04-06 08:03	2013-04-06 08:03	SOUTH PLATTE RIVER	100829	PREWITT INLET CANAL	1905-05-18	26302.20226	612.4800 CFS	1, 2, 3, 4, 5, 6, 7	BYPASS CALL FROM 0100501 - EMPIRE DITCH
2013-04-06 12:00	2013-04-08 16:00	SOUTH PLATTE RIVER	6499999	SOUTH PLATTE RIVER COMPACT	1897-06-14	17332.00000	120.0000 CFS	64	
2013-04-09 12:00	2013-04-11 08:00	SOUTH PLATTE RIVER	200802	BURLINGTON D RIVER HG	1909-01-13	21562.00000	900.0000 CFS	8, 9, 23, 80	
2013-04-11 08:00	2013-04-14 08:00	SOUTH PLATTE RIVER	200802	BURLINGTON D RIVER HG	1899-05-01	18018.00000	38.0800 CFS	8, 9, 23, 80	BYPASS CALL FROM 0801002 - DENVER CONDUIT NO 20
2013-04-12 08:00	2013-04-16 12:00	SOUTH PLATTE RIVER	100829	PREWITT INLET CANAL	1915-08-01	26302.23953	411.0000 CFS	1, 2, 3, 4, 5, 6, 7	BYPASS CALL FROM 0100687 - NORTH STERLING CANAL
2013-04-14 08:00	2013-05-04 08:00	SOUTH PLATTE RIVER	200802	BURLINGTON D RIVER HG	1909-01-13	21562.00000	900.0000 CFS	8, 9, 23, 80	

CALLING PRIORITY 2012-2013 (continued)

Start Date	End Date	Water Source	WDID	Structure Name	Appro Date	Admin No	Decreed Amt	Districts Affected	Set Comments
2013-04-16 12:00	2013-04-27 08:00	SOUTH PLATTE RIVER	100503	RIVERSIDE CANAL	1929-12-31	31423.29219	1000.0000 CFS	1, 2, 3, 4, 5, 6, 7	
2013-04-16 12:00	2013-04-17 08:00	SOUTH PLATTE RIVER	100829	PREWITT INLET CANAL	1977-06-30	47847.46567	102.0000 CFS	1	BYPASS CALL FROM 0100519 - TREMONT DITCH
2013-04-19 08:00	2013-04-27 08:00	SOUTH PLATTE RIVER	100519	TREMONT DITCH	1977-06-30	47847.46567	102.0000 CFS	1	
2013-04-26 12:00	2013-04-27 08:00	SOUTH PLATTE RIVER	6400535	SOUTH PLATTE DITCH	1996-05-08	53454.00000	294.0000 CFS	1, 64	BYPASS CALL FROM 0100687 - NORTH STERLING CANAL
2013-04-26 12:00	2013-04-27 08:00	SOUTH PLATTE RIVER	6499999	SOUTH PLATTE RIVER COMPACT	2003-04-30	56002.00000	22.0000 CFS	64	BYPASS CALL FROM 6400504 - PETERSON DITCH
2013-04-27 08:00	2013-04-29 08:00	SOUTH PLATTE RIVER	6499999	SOUTH PLATTE RIVER COMPACT	1897-06-14	17332.00000	120.0000 CFS	64	
2013-04-27 08:00	2013-05-03 08:00	SOUTH PLATTE RIVER	100687	NORTH STERLING CANAL	1929-12-31	31423.29219	1000.0000 CFS	1, 2, 3, 4, 5, 6, 7	BYPASS CALL FROM 0100503 - RIVERSIDE CANAL
2013-04-27 12:00	2013-05-03 08:00	SOUTH PLATTE RIVER	100829	PREWITT INLET CANAL	1929-12-31	31423.29219	695.0000 CFS	1	
2013-04-29 08:00	2013-05-02 08:00	SOUTH PLATTE RIVER	6499999	SOUTH PLATTE RIVER COMPACT	1974-03-15	45364.00000	26.8000 CFS	1, 64	BYPASS CALL FROM 6400535 - SOUTH PLATTE DITCH
2013-05-02 08:00	2013-05-04 08:00	SOUTH PLATTE RIVER	6499999	SOUTH PLATTE RIVER COMPACT	2002-12-31	55882.00000	50.0000 CFS	1, 64	BYPASS CALL FROM 6400511 - HARMONY DITCH 1
2013-05-03 08:00	2013-05-08 08:00	SOUTH PLATTE RIVER	100829	PREWITT INLET CANAL	1929-12-31	31423.29219	695.0000 CFS	1, 2, 3, 4, 5, 6, 7	
2013-05-04 08:00	2013-05-15 08:00	SOUTH PLATTE RIVER	200802	BURLINGTON D RIVER HG	1910-11-21	22239.00000	500.0000 CFS	8, 9, 23, 80	PROSPECT RESERVOIR
2013-05-04 08:00	2013-05-06 08:00	SOUTH PLATTE RIVER	6499999	SOUTH PLATTE RIVER COMPACT	2003-01-06	55888.00000	30.6000 CFS	1, 64	BYPASS CALL FROM 6400530 - SPRINGDALE DITCH

CALLING PRIORITY 2012-2013 (Continued)

Start Date	End Date	Water Source	WDID	Structure Name	Appro Date	Admin No	Decreed Amt	Districts Affected	Set Comments
2013-05-06 08:00	2013-05-24 08:00	SOUTH PLATTE RIVER	6499999	SOUTH PLATTE RIVER COMPACT	1897-06-14	17332.00000	120.0000 CFS	64	
2013-05-08 08:00	2013-05-08 12:00	SOUTH PLATTE RIVER	6400511	HARMONY DITCH 1	1914-05-27	26302.23522	460.0000 CFS	1, 2, 3, 4, 5, 6, 7	BYPASS CALL FROM 0100687 - NORTH STERLING CANAL
2013-05-08 12:00	2013-05-10 08:00	SOUTH PLATTE RIVER	100687	NORTH STERLING CANAL	1914-05-27	26302.23522	460.0000 CFS	1, 2, 3, 4, 5, 6, 7	
2013-05-10 08:00	2013-05-13 08:00	SOUTH PLATTE RIVER	100829	PREWITT INLET CANAL	1929-12-31	31423.29219	695.0000 CFS	1, 2, 3, 4, 5, 6, 7	
2013-05-13 08:00	2013-05-13 16:00	SOUTH PLATTE RIVER	6400533	PAWNEE DITCH	1914-05-27	26302.23522	460.0000 CFS	1, 2, 3, 4, 5, 6, 7	BYPASS CALL FROM 0100687 - NORTH STERLING CANAL
2013-05-13 16:00	2013-05-15 08:00	SOUTH PLATTE RIVER	6400511	HARMONY DITCH 1	1914-05-27	26302.23522	460.0000 CFS	1, 2, 3, 4, 5, 6, 7	BYPASS CALL FROM 0100687 - NORTH STERLING CANAL
2013-05-15 08:00	2013-05-16 08:00	SOUTH PLATTE RIVER	6400511	HARMONY DITCH 1	1907-05-31	20969.00000	417.0000 CFS	1,2,3,4,5,6,7,8,9,80	BYPASS CALL FROM 0100503 - RIVERSIDE CANAL
2013-05-16 08:00	2013-05-18 12:00	SOUTH PLATTE RIVER	6400511	HARMONY DITCH 1	1902-04-28	19110.00000	48564.0000 AF	1,2,3,4,5,6,7,8,9,80	BYPASS CALL FROM 0404110 - BOYD LAKE RES
2013-05-18 12:00	2013-05-19 08:00	SOUTH PLATTE RIVER	6400511	HARMONY DITCH 1	1902-10-06	19271.00000	13219.0000 AF	1,2,3,4,5,6,7,8,9,64,80	BYPASS CALL FROM 0503905 - UNION RES
2013-05-19 08:00	2013-05-21 08:00	SOUTH PLATTE RIVER	6400511	HARMONY DITCH 1	1907-05-31	20969.00000	417.0000 CFS	1,2,3,4,5,6,7,8,9,64,80	BYPASS CALL FROM 0100503 - RIVERSIDE CANAL
2013-05-21 08:00	2013-05-21 12:00	SOUTH PLATTE RIVER	200825	HEWES COOK DITCH	1889-10-01	14519.00000	12.3800 CFS	2, 7, 8, 9, 80	BYPASS CALL FROM 0801002 - DENVER CONDUIT NO 20
2013-05-21 08:00	2013-05-24 08:00	SOUTH PLATTE RIVER	6400511	HARMONY DITCH 1	1907-05-31	20969.00000	417.0000 CFS	1,2,3,4,5,6,64	BYPASS CALL FROM 0100503 - RIVERSIDE CANAL
2013-05-21 12:00	2013-05-24 12:00	SOUTH PLATTE RIVER	200825	HEWES COOK DITCH	1889-06-27	14423.00000	30691.0000 AF	2,7,8,9,23,80	BYPASS CALL FROM 8003550 - CHEESMAN RES

CALLING PRIORITY 2012-2013 (Continued)

Start Date	End Date	Water Source	WDID	Structure Name	Appro Date	Admin No	Decreed Amt	Districts Affected	Set Comments
2013-05-24 08:00	2013-05-24 12:00	SOUTH PLATTE RIVER	6400511	HARMONY DITCH 1	1895-04-28	16554.00000	252.0000 CFS	1,2,3,4,5,6, 64	
2013-05-24 12:00	2013-05-27 08:00	SOUTH PLATTE RIVER	6400511	HARMONY DITCH 1	1895-04-28	16554.00000	252.0000 CFS	1,2,3,4,5,6, 7,8,9,64,80	
2013-05-26 16:00	2013-09-14 16:00	SOUTH PLATTE RIVER	6499999	SOUTH PLATTE RIVER COMPACT	1897-06-14	17332.00000	120.0000 CFS	64	
2013-05-27 08:00	2013-05-30 12:00	SOUTH PLATTE RIVER	6400511	HARMONY DITCH 1	1907-05-31	20969.00000	417.0000 CFS	1,2,3,4,5,6, 7,8,9,64,80	BYPASS CALL FROM 0100503 - RIVERSIDE CANAL
2013-05-30 12:00	2013-05-31 08:00	SOUTH PLATTE RIVER	200825	HEWES COOK DITCH	1902-03-04	19055.00000	944.0000 CFS	2,7,8,9,80	BYPASS CALL FROM 0700553 - CROKE CANAL
2013-05-30 12:00	2013-05-31 08:00	SOUTH PLATTE RIVER	6400511	HARMONY DITCH 1	1907-05-31	20969.00000	417.0000 CFS	1,2,3,4,5,6, 64	BYPASS CALL FROM 0100503 - RIVERSIDE CANAL
2013-05-31 08:00	2013-05-31 16:00	SOUTH PLATTE RIVER	6400511	HARMONY DITCH 1	1902-03-04	19055.00000	944.0000 CFS	1,2,3,4,5,6, 7,8,9,80	BYPASS CALL FROM 0700553 - CROKE CANAL
2013-05-31 16:00	2013-06-07 12:00	SOUTH PLATTE RIVER	6400511	HARMONY DITCH 1	1897-05-03	17290.00000	50.0000 CFS	64	BYPASS CALL FROM 6400515 - HARMONY DITCH 2
2013-05-31 16:00	2013-06-07 12:00	SOUTH PLATTE RIVER	6400528	STERLING IRR CO DITCH 1	1888-04-15	13985.00000	284.0000 CFS	1,2,3,4,5,6, 7,8,9,23,64, 80	BYPASS CALL FROM 0100518 - LOWER PLATTE BEAVER D
2013-06-07 12:00	2013-06-09 08:00	SOUTH PLATTE RIVER	6400511	HARMONY DITCH 1	1895-04-28	16554.00000	252.0000 CFS	1,2,3,4,5,6, 7,8,9,23,64, 80	
2013-06-09 08:00	2013-06-10 16:00	SOUTH PLATTE RIVER	6400511	HARMONY DITCH 1	1902-04-28	19110.00000	48564.000 0 AF	1,2,3,4,5,6, 7,8,9,23,64, 80	BYPASS CALL FROM 0404110 - BOYD LAKE RES
2013-06-10 16:00	2013-06-11 08:00	SOUTH PLATTE RIVER	200825	HEWES COOK DITCH	1902-03-04	19055.00000	944.0000 CFS	2, 7, 8, 9, 80	BYPASS CALL FROM 0700553 - CROKE CANAL
2013-06-10 16:00	2013-06-11 08:00	SOUTH PLATTE RIVER	6400511	HARMONY DITCH 1	1902-04-28	19110.00000	48564.000 0 AF	1, 2, 3, 4, 5, 6, 64	BYPASS CALL FROM 0404110 - BOYD LAKE RES

CALLING PRIORITY 2012-2013 (Continued)

Start Date	End Date	Water Source	WDID	Structure Name	Appro Date	Admin No	Decreed Amt	Districts Affected	Set Comments
2013-06-11 08:00	2013-06-13 08:00	SOUTH PLATTE RIVER	200802	BURLINGTON D RIVER HG	1899-05-01	18018.00000	38.0800 CFS	2, 8, 9, 80	BYPASS CALL FROM 0801002 - DENVER CONDUIT NO 20
2013-06-11 08:00	2013-06-15 08:00	SOUTH PLATTE RIVER	6400511	HARMONY DITCH 1	1902-03-04	19055.00000	944.0000 CFS	1,2,3,4,5,6,7,64	BYPASS CALL FROM 0700553 - CROKE CANAL
2013-06-13 08:00	2013-06-16 08:00	SOUTH PLATTE RIVER	200802	BURLINGTON D RIVER HG	1892-09-01	15585.00000	25.3300 CFS	2, 8, 9, 80	BYPASS CALL FROM 0801002 - DENVER CONDUIT NO 20
2013-06-15 08:00	2013-06-16 08:00	SOUTH PLATTE RIVER	6400511	HARMONY DITCH 1	1902-01-17	19009.00000	175.0000 CFS	1, 2, 3, 4, 5, 6, 7, 64	BYPASS CALL FROM 0100519 - TREMONT DITCH
2013-06-16 08:00	2013-07-14 08:00	SOUTH PLATTE RIVER	6400511	HARMONY DITCH 1	1897-05-03	17290.00000	50.0000 CFS	64	BYPASS CALL FROM 6400515 - HARMONY DITCH 2
2013-06-16 08:00	2013-06-16 12:00	SOUTH PLATTE RIVER	6400528	STERLING IRR CO DITCH 1	1888-04-15	13985.00000	284.0000 CFS	1,2,3,4,5,6,7,8,9,23,64,80	BYPASS CALL FROM 0100518 - LOWER PLATTE BEAVER D
2013-06-16 12:00	2013-06-17 12:00	SOUTH PLATTE RIVER	200802	BURLINGTON D RIVER HG	1885-11-20	13108.00000	350.0000 CFS	2, 8, 9, 23, 80	
2013-06-16 12:00	2013-06-17 12:00	SOUTH PLATTE RIVER	6400528	STERLING IRR CO DITCH 1	1888-04-15	13985.00000	284.0000 CFS	1,2,3,4,5,6,7,64	BYPASS CALL FROM 0100518 - LOWER PLATTE BEAVER D
2013-06-17 12:00	2013-06-20 16:00	SOUTH PLATTE RIVER	6400528	STERLING IRR CO DITCH 1	1888-04-15	13985.00000	284.0000 CFS	1,2,3,4,5,6,7,8,9,23,64,80	BYPASS CALL FROM 0100518 - LOWER PLATTE BEAVER D
2013-06-20 16:00	2013-06-24 16:00	SOUTH PLATTE RIVER	6400524	LOWLINE DITCH	1882-10-18	11979.00000	323.0000 CFS	1,2,3,4,5,6,7,8,9,23,64,80	BYPASS CALL FROM 0100514 - FT MORGAN CANAL
2013-06-24 16:00	2013-06-26 08:00	SOUTH PLATTE RIVER	200825	HEWES COOK DITCH	1876-11-20	9821.00000	444.5000 AF	7, 8, 9, 23, 80	BYPASS CALL FROM 0200824 - FARMERS INDEPENDENT DITCH
2013-06-24 16:00	2013-06-25 16:00	SOUTH PLATTE RIVER	6400524	LOWLINE DITCH	1882-10-18	11979.00000	323.0000 CFS	1, 2, 3, 4, 5, 6	BYPASS CALL FROM 0100514 - FT MORGAN CANAL

CALLING PRIORITY 2012-2013 (Continued)

Start Date	End Date	Water Source	WDID	Structure Name	Appro Date	Admin No	Decreed Amt	Districts Affected	Set Comments
2013-06-25 16:00	2013-06-26 08:00	SOUTH PLATTE RIVER	6400524	LOWLINE DITCH	1882-10-14	11975.00000	39.7610 CFS	1, 2, 3, 4, 5, 6, 64	
2013-06-25 16:00	2013-06-26 08:00	SOUTH PLATTE RIVER	6400524	LOWLINE DITCH	1882-10-14	11975.00000	39.7610 CFS	1, 2, 3, 4, 5, 6, 64	
2013-06-26 08:00	2013-06-27 08:00	SOUTH PLATTE RIVER	6400524	LOWLINE DITCH	1882-10-14	11975.00000	39.7610 CFS	1, 2, 3, 64	
2013-06-26 08:00	2013-06-29 08:00	SOUTH PLATTE RIVER	200825	HEWES COOK DITCH	1873-10-15	8689.00000	94.2500 CFS	2, 7, 8, 9, 23, 80	BYPASS CALL FROM 0200813 - PLATTEVILLE DITCH
2013-06-26 08:00	2013-06-26 12:00	SOUTH PLATTE RIVER	200834	LOWER LATHAM DITCH	1881-10-24	11620.00000	133.8800 CFS	2, 4, 5, 6	
2013-06-26 12:00	2013-06-29 08:00	SOUTH PLATTE RIVER	200834	LOWER LATHAM DITCH	1877-11-14	10180.00000	97.6800 CFS	2, 4, 5, 6	
2013-06-27 08:00	2013-06-30 08:00	SOUTH PLATTE RIVER	6400528	STERLING IRR CO DITCH 1	1882-06-22	11861.00000	126.0000 CFS	1, 2, 3, 64	BYPASS CALL FROM 6400533 - PAWNEE DITCH
2013-06-29 08:00	2013-06-30 08:00	SOUTH PLATTE RIVER	200834	LOWER LATHAM DITCH	1877-11-14	10180.00000	97.6800 CFS	2,4,5,6,7,8, 9,23,80	
2013-06-30 08:00	2013-07-02 08:00	SOUTH PLATTE RIVER	200825	HEWES COOK DITCH	1876-11-20	9821.00000	85.4000 CFS	2, 7, 8, 9, 23, 80	BYPASS CALL FROM 0200824 - FARMERS INDEPENDENT DITCH
2013-06-30 08:00	2013-07-02 08:00	SOUTH PLATTE RIVER	6400528	STERLING IRR CO DITCH 1	1882-06-22	11861.00000	126.0000 CFS	1, 2, 3, 4, 5, 6, 64	BYPASS CALL FROM 6400533 - PAWNEE DITCH
2013-07-02 08:00	2013-07-03 08:00	SOUTH PLATTE RIVER	6400528	STERLING IRR CO DITCH 1	1882-09-04	11935.00000	38.0000 CFS	1,2,3,4,5,6, 7,8,9,23,64, 80	BYPASS CALL FROM 0100518 - LOWER PLATTE BEAVER D
2013-07-03 08:00	2013-07-04 08:00	SOUTH PLATTE RIVER	200825	HEWES COOK DITCH	1876-11-20	9821.00000	85.4000 CFS	2, 7, 8, 9, 23, 80	BYPASS CALL FROM 0200824 - FARMERS INDEPENDENT DITCH

CALLING PRIORITY 2012-2013 (Continued)

Start Date	End Date	Water Source	WDID	Structure Name	Appro Date	Admin No	Decreed Amt	Districts Affected	Set Comments
2013-07-03 08:00	2013-07-04 08:00	SOUTH PLATTE RIVER	6400528	STERLING IRR CO DITCH 1	1882-09-04	11935.00000	38.0000 CFS	1, 2, 3, 4, 5, 6, 64	BYPASS CALL FROM 0100518 - LOWER PLATTE BEAVER D
2013-07-04 08:00	2013-07-08 12:00	SOUTH PLATTE RIVER	200834	LOWER LATHAM DITCH	1881-10-24	11620.00000	133.8800 CFS	2, 4, 5, 6	
2013-07-04 08:00	2013-07-05 08:00	SOUTH PLATTE RIVER	200825	HEWES COOK DITCH	1873-10-15	8689.00000	94.2500 CFS	2, 7, 8, 9, 23, 80	BYPASS CALL FROM 0200813 - PLATTEVILLE DITCH
2013-07-04 08:00	2013-07-05 12:00	SOUTH PLATTE RIVER	6400528	STERLING IRR CO DITCH 1	1882-09-04	11935.00000	38.0000 CFS	1, 2, 3, 64	BYPASS CALL FROM 0100518 - LOWER PLATTE BEAVER D
2013-07-05 08:00	2013-07-07 08:00	SOUTH PLATTE RIVER	200825	HEWES COOK DITCH	1871-10-05	7948.00000	177.0700 CFS	2, 7, 8, 9, 23, 80	BYPASS CALL FROM 0200817 - EVANS NO 2 DITCH
2013-07-05 12:00	2013-07-08 12:00	SOUTH PLATTE RIVER	6400528	STERLING IRR CO DITCH 1	1882-06-22	11861.00000	126.0000 CFS	1, 2, 3, 64	BYPASS CALL FROM 6400533 - PAWNEE DITCH
2013-07-07 08:00	2013-07-08 08:00	SOUTH PLATTE RIVER	200825	HEWES COOK DITCH	1876-07-08	9686.00000	74.2500 CFS	2, 7, 8, 9, 23, 80	BYPASS CALL FROM 0200808 - FULTON DITCH
2013-07-08 08:00	2013-07-09 08:00	SOUTH PLATTE RIVER	200825	HEWES COOK DITCH	1871-10-05	7948.00000	177.0700 CFS	2, 7, 8, 9, 23, 80	BYPASS CALL FROM 0200817 - EVANS NO 2 DITCH
2013-07-08 12:00	2013-07-09 08:00	SOUTH PLATTE RIVER	6400528	STERLING IRR CO DITCH 1	1882-06-22	11861.00000	126.0000 CFS	1, 2, 3, 4, 5, 6, 64	BYPASS CALL FROM 6400533 - PAWNEE DITCH
2013-07-09 08:00	2013-07-10 08:00	SOUTH PLATTE RIVER	200834	LOWER LATHAM DITCH	1881-10-24	11620.00000	133.8800 CFS	2, 4, 5, 6	
2013-07-09 08:00	2013-07-14 08:00	SOUTH PLATTE RIVER	6400528	STERLING IRR CO DITCH 1	1882-06-22	11861.00000	126.0000 CFS	1, 2, 3, 64	BYPASS CALL FROM 6400533 - PAWNEE DITCH
2013-07-09 08:00	2013-07-09 12:00	SOUTH PLATTE RIVER	200825	HEWES COOK DITCH	1871-10-05	7948.00000	177.0700 CFS	2, 7, 8, 9, 23, 80	BYPASS CALL FROM 0200817 - EVANS NO 2 DITCH
2013-07-09 12:00	2013-07-12 12:00	SOUTH PLATTE RIVER	6400503	SOUTH RESERVATION DITCH	1895-03-01	17846.16496	164.0000 CFS	64	BYPASS CALL FROM 6400504 - PETERSON DITCH

CALLING PRIORITY 2012-2013 (Continued)

Start Date	End Date	Water Source	WDID	Structure Name	Appro Date	Admin No	Decreed Amt	Districts Affected	Set Comments
2013-07-09 12:00	2013-07-10 08:00	SOUTH PLATTE RIVER	200825	HEWES COOK DITCH	1876-07-08	9686.00000	74.2500 CFS	2, 7, 8, 9, 23, 80	BYPASS CALL FROM 0200808 - FULTON DITCH
2013-07-10 08:00	2013-07-13 08:00	SOUTH PLATTE RIVER	200834	LOWER LATHAM DITCH	1877-11-14	10180.00000	97.6800 CFS	2, 4, 5, 6	
2013-07-10 08:00	2013-07-12 08:00	SOUTH PLATTE RIVER	200825	HEWES COOK DITCH	1871-10-05	7948.00000	177.0700 CFS	2, 7, 8, 9, 23, 80	BYPASS CALL FROM 0200817 - EVANS NO 2 DITCH
2013-07-12 08:00	2013-07-13 08:00	SOUTH PLATTE RIVER	200825	HEWES COOK DITCH	1876-07-08	9686.00000	74.2500 CFS	2, 7, 8, 9, 23, 80	BYPASS CALL FROM 0200808 - FULTON DITCH
2013-07-12 12:00	2013-07-25 08:00	SOUTH PLATTE RIVER	6400502	LIDDLE DITCH	1891-10-21	17846.15269	10.0000 CFS	64	
2013-07-13 08:00	2013-07-14 08:00	SOUTH PLATTE RIVER	200825	HEWES COOK DITCH	1873-10-15	8689.00000	94.2500 CFS	2, 7, 8, 9, 23, 80	BYPASS CALL FROM 0200813 - PLATTEVILLE DITCH
2013-07-13 08:00	2013-07-14 08:00	SOUTH PLATTE RIVER	200834	LOWER LATHAM DITCH	1881-10-24	11620.00000	133.8800 CFS	2, 4, 5, 6	
2013-07-14 08:00	2013-07-15 08:00	SOUTH PLATTE RIVER	6400511	HARMONY DITCH 1	1897-05-03	17290.00000	50.0000 CFS	1,2,3,4,5,6, 7,8,9,64	BYPASS CALL FROM 6400515 - HARMONY DITCH 2
2013-07-15 08:00	2013-07-15 16:00	SOUTH PLATTE RIVER	200825	HEWES COOK DITCH	1885-11-20	13108.00000	350.0000 CFS	2, 7, 8, 9, 23, 80	BYPASS CALL FROM 0200802 - BURLINGTON D RIVER HG
2013-07-15 08:00	2013-07-18 12:00	SOUTH PLATTE RIVER	6400511	HARMONY DITCH 1	1897-05-03	17290.00000	50.0000 CFS	1, 2, 3, 4, 5, 6, 64	BYPASS CALL FROM 6400515 - HARMONY DITCH 2
2013-07-15 16:00	2013-07-16 08:00	SOUTH PLATTE RIVER	6400511	HARMONY DITCH 1	1897-05-03	17290.00000	50.0000 CFS	1,2,3,4,5,6, 7,8,9,64,80	BYPASS CALL FROM 6400515 - HARMONY DITCH 2
2013-07-16 08:00	2013-07-16 12:00	SOUTH PLATTE RIVER	200825	HEWES COOK DITCH	1885-11-20	13108.00000	350.0000 CFS	2, 7, 8, 9, 23, 80	BYPASS CALL FROM 0200802 - BURLINGTON D RIVER HG
2013-07-16 12:00	2013-07-17 12:00	SOUTH PLATTE RIVER	200825	HEWES COOK DITCH	1876-11-20	9821.00000	85.4000 CFS	2, 7, 8, 9, 23, 80	BYPASS CALL FROM 0200824 - FARMERS INDEPENDENT DITCH

CALLING PRIORITY 2012-2013 (Continued)

Start Date	End Date	Water Source	WDID	Structure Name	Appro Date	Admin No	Decreed Amt	Districts Affected	Set Comments
2013-07-17 12:00	2013-07-18 08:00	SOUTH PLATTE RIVER	200825	HEWES COOK DITCH	1876-07-08	9686.00000	74.2500 CFS	2, 7, 8, 9, 23, 80	BYPASS CALL FROM 0200808 - FULTON DITCH
2013-07-18 08:00	2013-07-28 08:00	SOUTH PLATTE RIVER	200825	HEWES COOK DITCH	1871-10-05	7948.00000	177.0700 CFS	2, 7, 8, 9, 23, 80	BYPASS CALL FROM 0200817 - EVANS NO 2 DITCH
2013-07-18 08:00	2013-07-19 08:00	SOUTH PLATTE RIVER	6400511	HARMONY DITCH 1	1897-05-03	17290.00000	50.0000 CFS	1, 2, 3, 64	BYPASS CALL FROM 6400515 - HARMONY DITCH 2
2013-07-18 12:00	2013-07-24 08:00	SOUTH PLATTE RIVER	200834	LOWER LATHAM DITCH	1881-10-24	11620.00000	133.8800 CFS	2, 4, 5, 6	
2013-07-19 08:00	2013-07-19 16:00	SOUTH PLATTE RIVER	6400528	STERLING IRR CO DITCH 1	1886-07-19	13349.00000	62.2750 CFS	1, 2, 3, 64	BYPASS CALL FROM 6400530 - SPRINGDALE DITCH
2013-07-19 08:00	2013-08-04 08:00	SOUTH PLATTE RIVER	6400511	HARMONY DITCH 1	1897-05-03	17290.00000	50.0000 CFS	64	BYPASS CALL FROM 6400515 - HARMONY DITCH 2
2013-07-19 16:00	2013-07-22 08:00	SOUTH PLATTE RIVER	6400528	STERLING IRR CO DITCH 1	1888-04-15	13985.00000	284.0000 CFS	1, 2, 3, 64	BYPASS CALL FROM 0100518 - LOWER PLATTE BEAVER D
2013-07-22 08:00	2013-07-23 16:00	SOUTH PLATTE RIVER	6400528	STERLING IRR CO DITCH 1	1882-06-22	11861.00000	126.0000 CFS	1, 2, 3, 64	BYPASS CALL FROM 6400533 - PAWNEE DITCH
2013-07-23 16:00	2013-07-30 08:00	SOUTH PLATTE RIVER	6400528	STERLING IRR CO DITCH 1	1886-07-19	13349.00000	62.2750 CFS	1, 2, 3, 64	BYPASS CALL FROM 6400530 - SPRINGDALE DITCH
2013-07-24 08:00	2013-07-28 08:00	SOUTH PLATTE RIVER	200834	LOWER LATHAM DITCH	1877-11-14	10180.00000	97.6800 CFS	2, 4, 5, 6	
2013-07-28 08:00	2013-07-30 08:00	SOUTH PLATTE RIVER	200834	LOWER LATHAM DITCH	1881-10-24	11620.00000	133.8800 CFS	2, 4, 5, 6	
2013-07-28 08:00	2013-07-30 08:00	SOUTH PLATTE RIVER	200825	HEWES COOK DITCH	1876-04-10	9597.00000	8.3300 CFS	2, 7, 8, 9, 23, 80	BYPASS CALL FROM 0200822 - MEADOW ISLAND DITCH

CALLING PRIORITY 2012-2013 (Continued)

Start Date	End Date	Water Source	WDID	Structure Name	Appro Date	Admin No	Decreed Amt	Districts Affected	Set Comments
2013-07-30 08:00	2013-08-03 08:00	SOUTH PLATTE RIVER	200825	HEWES COOK DITCH	1871-10-05	7948.00000	177.0700 CFS	2, 7, 8, 9, 23, 80	BYPASS CALL FROM 0200817 - EVANS NO 2 DITCH
2013-07-30 08:00	2013-07-31 08:00	SOUTH PLATTE RIVER	6400528	STERLING IRR CO DITCH 1	1886-07-19	13349.00000	62.2750 CFS	1, 2, 3, 4, 5, 6, 64	BYPASS CALL FROM 6400530 - SPRINGDALE DITCH
2013-07-31 08:00	2013-08-02 08:00	SOUTH PLATTE RIVER	6400528	STERLING IRR CO DITCH 1	1882-10-18	11979.00000	323.0000 CFS	1, 2, 3, 4, 5, 6, 64	BYPASS CALL FROM 0100514 - FT MORGAN CANAL
2013-08-02 08:00	2013-08-04 08:00	SOUTH PLATTE RIVER	6400528	STERLING IRR CO DITCH 1	1882-09-04	11935.00000	38.0000 CFS	1, 2, 3, 64	BYPASS CALL FROM 0100518 - LOWER PLATTE BEAVER D
2013-08-02 08:00	2013-08-04 08:00	SOUTH PLATTE RIVER	200834	LOWER LATHAM DITCH	1881-10-24	11620.00000	133.8800 CFS	2, 4, 5, 6	
2013-08-03 08:00	2013-08-04 08:00	SOUTH PLATTE RIVER	200825	HEWES COOK DITCH	1871-08-10	7892.00000	69.8770 CFS	2, 7, 8, 9, 23, 80	
2013-08-04 08:00	2013-08-05 08:00	SOUTH PLATTE RIVER	200802	BURLINGTON D RIVER HG	1911-03-17	22355.00000	400.0000 CFS	2, 8, 9, 23, 80	HORSE CREEK RESERVOIR
2013-08-04 08:00	2013-08-06 08:00	SOUTH PLATTE RIVER	6400511	HARMONY DITCH 1	1929-12-31	31423.29219	695.0000 CFS	1, 2, 3, 4, 5, 6, 64	BYPASS CALL FROM 0100829 - PREWITT INLET CANAL
2013-08-05 08:00	2013-08-06 08:00	SOUTH PLATTE RIVER	200825	HEWES COOK DITCH	1885-11-20	13108.00000	350.0000 CFS	2, 7, 8, 9, 23, 80	BYPASS CALL FROM 0200802 - BURLINGTON D RIVER HG
2013-08-06 08:00	2013-08-07 08:00	SOUTH PLATTE RIVER	200825	HEWES COOK DITCH	1881-01-15	11338.00000	63.3000 CFS	2, 7, 8, 9, 23, 80	BYPASS CALL FROM 0200809 - BRANTNER DITCH
2013-08-06 08:00	2013-08-07 08:00	SOUTH PLATTE RIVER	6400511	HARMONY DITCH 1	1897-05-03	17290.00000	50.0000 CFS	1, 2, 3, 4, 5, 6, 64	BYPASS CALL FROM 6400515 - HARMONY DITCH 2
2013-08-07 08:00	2013-08-07 16:00	SOUTH PLATTE RIVER	200825	HEWES COOK DITCH	1873-09-15	8659.00000	92.8700 CFS	2, 7, 8, 9, 23, 80	BYPASS CALL FROM 0200812 - LUPTON BOTTOM DITCH
2013-08-07 08:00	2013-08-09 08:00	SOUTH PLATTE RIVER	6400528	STERLING IRR CO DITCH 1	1888-04-15	13985.00000	284.0000 CFS	1, 2, 3, 4, 5, 6, 64	BYPASS CALL FROM 0100518 - LOWER PLATTE BEAVER D

CALLING PRIORITY 2012-2013 (Continued)

Start Date	End Date	Water Source	WDID	Structure Name	Appro Date	Admin No	Decreed Amt	Districts Affected	Set Comments
2013-08-07 08:00	2013-09-10 08:00	SOUTH PLATTE RIVER	6400511	HARMONY DITCH 1	1897-05-03	17290.00000	50.0000 CFS	64	BYPASS CALL FROM 6400515 - HARMONY DITCH 2
2013-08-07 16:00	2013-08-09 08:00	SOUTH PLATTE RIVER	200825	HEWES COOK DITCH	1871-10-05	7948.00000	177.0700 CFS	2, 7, 8, 9, 23, 80	BYPASS CALL FROM 0200817 - EVANS NO 2 DITCH
2013-08-09 08:00	2013-08-09 16:00	SOUTH PLATTE RIVER	6400528	STERLING IRR CO DITCH 1	1888-04-15	13985.00000	284.0000 CFS	1,2,3,4,5,6, 7,8,9,23,64, 80	BYPASS CALL FROM 0100518 - LOWER PLATTE BEAVER D
2013-08-09 16:00	2013-08-10 08:00	SOUTH PLATTE RIVER	6400528	STERLING IRR CO DITCH 1	1886-07-19	13349.00000	62.2750 CFS	1,2,3,4,5,6, 7,8,9,23,64, 80	BYPASS CALL FROM 6400530 - SPRINGDALE DITCH
2013-08-10 08:00	2013-08-11 08:00	SOUTH PLATTE RIVER	6400528	STERLING IRR CO DITCH 1	1886-07-19	13349.00000	62.2750 CFS	1, 2, 3, 4, 5, 6, 64	BYPASS CALL FROM 6400530 - SPRINGDALE DITCH
2013-08-10 08:00	2013-08-11 08:00	SOUTH PLATTE RIVER	200825	HEWES COOK DITCH	1885-11-20	13108.00000	350.0000 CFS	2, 7, 8, 9, 23, 80	BYPASS CALL FROM 0200802 - BURLINGTON D RIVER HG
2013-08-11 08:00	2013-08-13 08:00	SOUTH PLATTE RIVER	6400528	STERLING IRR CO DITCH 1	1882-10-18	11979.00000	323.0000 CFS	1, 2, 3, 4, 5, 6, 64	BYPASS CALL FROM 0100514 - FT MORGAN CANAL
2013-08-11 08:00	2013-08-13 08:00	SOUTH PLATTE RIVER	200825	HEWES COOK DITCH	1876-11-20	9821.00000	85.4000 CFS	2, 7, 8, 9, 23, 80	BYPASS CALL FROM 0200824 - FARMERS INDEPENDENT DITCH
2013-08-13 08:00	2013-08-14 08:00	SOUTH PLATTE RIVER	6400528	STERLING IRR CO DITCH 1	1882-10-18	11979.00000	323.0000 CFS	1,2,3,4,5,6, 7,8,9,23,64, 80	BYPASS CALL FROM 0100514 - FT MORGAN CANAL
2013-08-14 08:00	2013-08-16 08:00	SOUTH PLATTE RIVER	6400528	STERLING IRR CO DITCH 1	1882-10-18	11979.00000	323.0000 CFS	1, 2, 3, 4, 5, 6, 64	BYPASS CALL FROM 0100514 - FT MORGAN CANAL
2013-08-14 08:00	2013-08-15 08:00	SOUTH PLATTE RIVER	200825	HEWES COOK DITCH	1876-07-08	9686.00000	74.2500 CFS	2, 7, 8, 9, 23, 80	BYPASS CALL FROM 0200808 - FULTON DITCH
2013-08-15 08:00	2013-08-16 08:00	SOUTH PLATTE RIVER	200825	HEWES COOK DITCH	1873-10-15	8689.00000	94.2500 CFS	2, 7, 8, 9, 23, 80	BYPASS CALL FROM 0200813 - PLATTEVILLE DITCH

CALLING PRIORITY 2012-2013 (Continued)

Start Date	End Date	Water Source	WDID	Structure Name	Appro Date	Admin No	Decreed Amt	Districts Affected	Set Comments
2013-08-16 08:00	2013-08-21 08:00	SOUTH PLATTE RIVER	6400528	STERLING IRR CO DITCH 1	1882-10-18	11979.00000	323.0000 CFS	1, 2, 3, 64	BYPASS CALL FROM 0100514 - FT MORGAN CANAL
2013-08-16 08:00	2013-08-18 08:00	SOUTH PLATTE RIVER	200834	LOWER LATHAM DITCH	1881-10-24	11620.00000	133.8800 CFS	2, 4, 5, 6	
2013-08-16 08:00	2013-08-21 12:00	SOUTH PLATTE RIVER	200825	HEWES COOK DITCH	1871-10-05	7948.00000	177.0700 CFS	2, 7, 8, 9, 23, 80	BYPASS CALL FROM 0200817 - EVANS NO 2 DITCH
2013-08-17 08:00	2013-09-12 08:00	SOUTH PLATTE RIVER	6400503	SOUTH RESERVATION DITCH	1895-03-01	17846.16496	164.0000 CFS	64	BYPASS CALL FROM 6400504 - PETERSON DITCH
2013-08-18 12:00	2013-09-05 16:00	SOUTH PLATTE RIVER	200834	LOWER LATHAM DITCH	1877-11-14	10180.00000	97.6800 CFS	2, 4, 5, 6	
2013-08-21 08:00	2013-09-03 08:00	SOUTH PLATTE RIVER	6400528	STERLING IRR CO DITCH 1	1882-06-22	11861.00000	126.0000 CFS	1, 2, 3, 64	BYPASS CALL FROM 6400533 - PAWNEE DITCH
2013-08-21 12:00	2013-08-22 08:00	SOUTH PLATTE RIVER	200825	HEWES COOK DITCH	1871-08-10	7892.00000	69.8770 CFS	2, 7, 8, 9, 23, 80	
2013-08-22 08:00	2013-08-23 08:00	SOUTH PLATTE RIVER	200825	HEWES COOK DITCH	1871-10-05	7948.00000	177.0700 CFS	2, 7, 8, 9, 23, 80	BYPASS CALL FROM 0200817 - EVANS NO 2 DITCH
2013-08-23 08:00	2013-08-26 08:00	SOUTH PLATTE RIVER	200825	HEWES COOK DITCH	1873-10-15	8689.00000	94.2500 CFS	2, 7, 8, 9, 23, 80	BYPASS CALL FROM 0200813 - PLATTEVILLE DITCH
2013-08-26 13:17	2013-08-28 08:00	SOUTH PLATTE RIVER	200825	HEWES COOK DITCH	1876-04-10	9597.00000	8.3300 CFS	2, 7, 8, 9, 23, 80	BYPASS CALL FROM 0200822 - MEADOW ISLAND DITCH
2013-08-28 08:00	2013-09-09 12:00	SOUTH PLATTE RIVER	200825	HEWES COOK DITCH	1871-10-05	7948.00000	177.0700 CFS	2, 7, 8, 9, 23, 80	BYPASS CALL FROM 0200817 - EVANS NO 2 DITCH
2013-09-03 08:00	2013-09-04 08:00	SOUTH PLATTE RIVER	6400528	STERLING IRR CO DITCH 1	1882-10-18	11979.00000	323.0000 CFS	1, 2, 3, 64	BYPASS CALL FROM 0100514 - FT MORGAN CANAL
2013-09-04 08:00	2013-09-05 16:00	SOUTH PLATTE RIVER	6400528	STERLING IRR CO DITCH 1	1882-09-04	11935.00000	38.0000 CFS	1, 2, 3, 64	BYPASS CALL FROM 0100518 - LOWER PLATTE BEAVER D

CALLING PRIORITY 2012-2013 (Continued)

Start Date	End Date	Water Source	WDID	Structure Name	Appro Date	Admin No	Decreed Amt	Districts Affected	Set Comments
2013-09-05 16:00	2013-09-07 12:00	SOUTH PLATTE RIVER	6400528	STERLING IRR CO DITCH 1	1882-09-04	11935.00000	38.0000 CFS	1, 2, 3, 4, 5, 6, 64	BYPASS CALL FROM 0100518 - LOWER PLATTE BEAVER D
2013-09-07 12:00	2013-09-09 12:00	SOUTH PLATTE RIVER	6400528	STERLING IRR CO DITCH 1	1884-04-07	12516.00000	32.0000 CFS	1, 2, 3, 4, 5, 6, 64	BYPASS CALL FROM 0100517 - DEUEL SNYDER CANAL
2013-09-09 12:00	2013-09-10 08:00	SOUTH PLATTE RIVER	200825	HEWES COOK DITCH	1873-09-15	8659.00000	92.8700 CFS	2, 7, 8, 9, 23, 80	BYPASS CALL FROM 0200812 - LUPTON BOTTOM DITCH
2013-09-09 12:00	2013-09-10 08:00	SOUTH PLATTE RIVER	6400528	STERLING IRR CO DITCH 1	1886-07-19	13349.00000	62.2750 CFS	1, 2, 3, 4, 5, 6, 64	BYPASS CALL FROM 6400530 - SPRINGDALE DITCH
2013-09-10 08:00	2013-09-12 08:00	SOUTH PLATTE RIVER	6400511	HARMONY DITCH 1	1897-05-03	17290.00000	50.0000 CFS	1,2,3,4,5,6, 7,8,9,23,64, 80	BYPASS CALL FROM 6400515 - HARMONY DITCH 2
2013-09-14 16:00	2013-09-15 16:00	SOUTH PLATTE RIVER	200802	BURLINGTON D RIVER HG	1977-12-28	46748.00000	10785.000 0 AF	8, 9, 23, 80	BYPASS CALL FROM 0803514 - CHATFIELD RESERVOIR
2013-10-22 08:00	2013-10-31 08:00	SOUTH PLATTE RIVER	200802	BURLINGTON D RIVER HG	1911-03-17	22355.00000	400.0000 CFS	8, 9, 23, 80	HORSE CREEK RESERVOIR

Table 6 - Staffing and Statistics

Staffing

Dam Safety Engineers	3
Water Resource Engineers	6
IT Professional	1
Engineering/Physical Science Techs/Assistants	9
Program Asst 1, & Technician II	3
Physical Science Researcher/Scientist	5
Full-Time Water Commissioners	26
Permanent Part-Time Water Commissioners	<u>3</u>
TOTAL STAFF	56

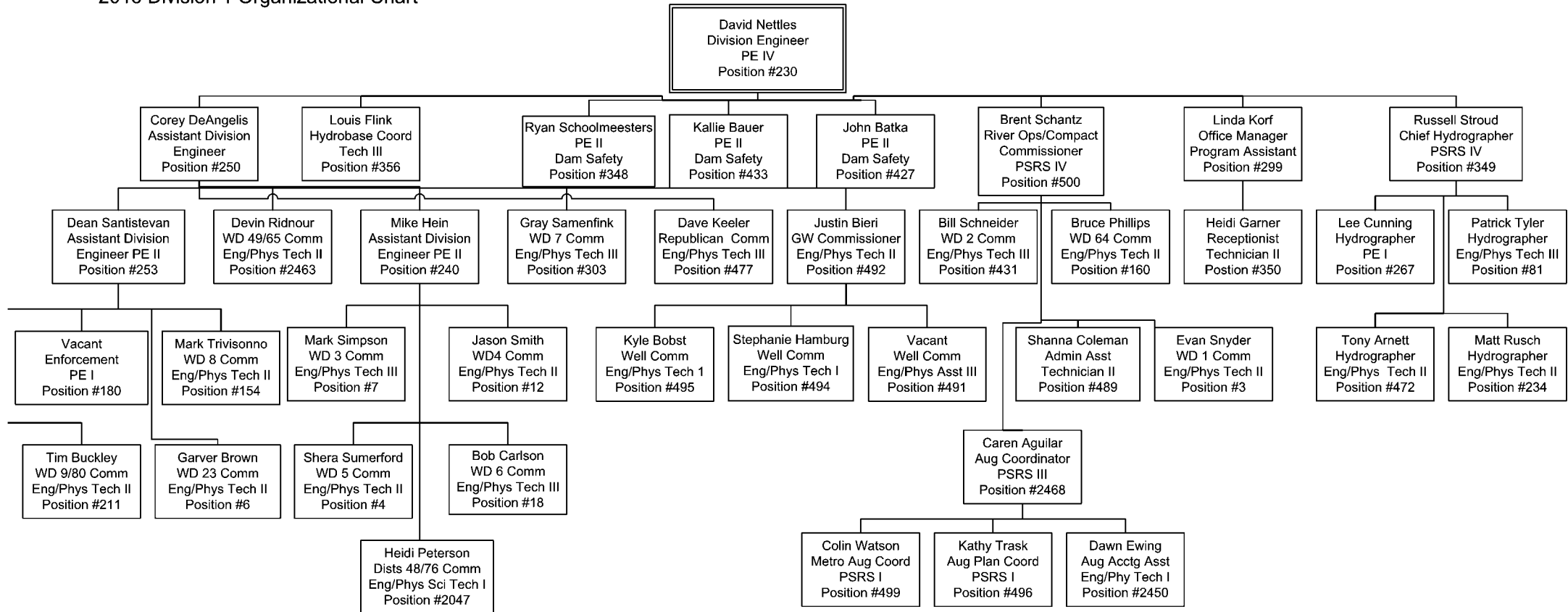
Statistics

Number of Well Permits	2,130
Number of Plans for Augmentation	1,272
Number of Dams Routinely Inspected	352*
Number of Active Substitute Supply Plans	250
Number of Contacts to give Public Assistance	123,532+

*The number is larger than years past due to the post flood inspections. Volunteer inspectors were used to do some of the inspections.

Table 7 – Organizational Chart

2013 Division 1 Organizational Chart



2013 Division 1 Organizational Chart for Water Commissioners

