

# Division 1 Annual Report



(Photograph by Lee Cunning)

## Irrigation Water Year 2012

# TABLE OF CONTENTS

- WATER SUPPLY AND ADMINISTRATION ..... 2
  - Water Supply Conditions ..... 2
  - Well Administration – South Platte River Basin ..... 3
  - Well Administration – Republican River Basin ..... 3
- COMMUNITY INVOLVEMENT ..... 4
- TABLES ..... 5
  - Table 1 – Storage Comparison ..... 5
  - Table 2 - Transmountain Diversion Summary ..... 6
  - Table 3 – Reservoir Storage Summary ..... 7
  - Table 4 – Water Court Activities ..... 20
  - Table 5 – Main Steam Call Record ..... 21
  - Table 6 – Staffing and Statistics ..... 38
  - Table 7 – Organizational Chart ..... 39



## **WATER SUPPLY AND ADMINISTRATION**

### **Water Supply Conditions**

Irrigation Year 2012 in Division One could be described using a quote from A Tale of Two Cities by Charles Dickens "It was the best of times; it was the worst of times." The first one-third of the year (November 2011 through February 2012) was very good, but the last two-thirds (March through October 2012) were very bad.

November 2011 through February 2012 started off the 2011-12 Irrigation Year (IY) in excellent fashion. Stream flows at two of the key South Platte gages, Kersey and Julesburg, were above average to well above average for the entire period. The flow at Kersey varied from 156% to 121% of average while the flow at Julesburg varied from 206% to 121% of average. As might be expected from the stream flow numbers, calls on the South Platte mainstem and tributaries were either normal or more junior than normal throughout this period. Water storage volumes also continued to be above average (117% to 105%). The one sour note in this otherwise rosy picture was that the snow pack remained stubbornly below average (77 to 93%) in terms of snow water equivalent throughout the period. This low snowpack did cause some concern, but in no way prepared everyone for what happened the rest of the irrigation year.

March 2012 set much of the tone for the rest of the irrigation year in Division 1. Temperatures were between 4 and 10° F above normal and precipitation was very low to nonexistent. The snow pack peaked on March 4, the earliest in the 30+ years of SNOWTEL remote sensing site operations, fully two months earlier than normal. Stream flow at Kersey and Julesburg dropped from well above average to below average and by the end of the month river calls had moved to more senior than normal. The lone bright spot was that storage was still above average (104%) because of the good conditions during the

last part of the 2011 IY and the first third of the 2012 IY.

April through June continued the very poor conditions that began in March to the point 2012 was being compared to the historically dry year of 2002. Stream flows at Kersey and Julesburg declined steadily to the point the June flows were 9% of the historic Kersey mean and 4% of the historic Julesburg mean. River calls followed the declining stream flows by growing progressively more senior to the point that by the end of June, calls not seen since July and August of 2002 were in place. Reservoir storage also reversed the above average trend to the point it was only 79% of average by the end of June. To further complicate the situation, the Division Engineer was forced to increase the assessed transit losses on the South Platte mainstem below Chatfield Reservoir the end of June. To top it all off, the Hewlett Park and High Park Fires in May and June burned approximately 95,000 acres and over 260 homes, mostly in Cache la Poudre River basin, to become the second largest and second most expensive fire in Colorado history.

Fortunately, conditions improved somewhat during the July through October period. The arrival of the monsoon rains in July both increased water supply and greatly reduced the fire danger in the foothills/mountains. However, the heavy ash/sediment load in the runoff from the burn area forced Ft. Collins and Greeley to cease direct diversions from the Poudre River, causing significant reductions in their water supplies. However, this also created opportunities to cooperate with irrigation users to avert a major water supply crisis. The impacts from the Hewlett Park and High Park Fires on the Ft. Collins and Greeley water supplies will last several years into the future, but both cities have been proactive in addressing these future impacts.

The more frequent precipitation events in the July through October period did cause greater stream flows at both the Kersey and



Julesburg gages and slightly more junior calls. However, stream flows were still well below normal (39% to 78% of average for Kersey and 13% to 29% for Julesburg). River calls remained more senior than normal and, by the end of September, most irrigation reservoirs were at or near dead-pool. Direct irrigation demand did decrease in October to the point some of the eastern plains reservoirs refill rights came into priority and allowed a bit of a head start on filling for the 2013 irrigation season.

### **Well Administration – South Platte River Basin**

In 2012, well administration resources were again spent on the 2010 Abandonment List (11CW263) and the Well Measurement Rules (11CW292) both filed in water court in December of 2011. Protests to the Abandonment List were due by June 30, 2012. As so many objections to the Proposed Abandonment List had already been processed by DWR, only 33 protests covering 49 water rights were received by the water court. The well team's extensive field work and documentation from prior years facilitated negotiations in these protest cases. By the end of 2012, stipulations for 16 of these protests had already been finalized and signed by the water judge. With the Well Measurement Rules filed, seven entities filed statements of opposition and one entity filed a statement of opposition to get into the case, though their intentions of supporting the Rules were made clear. Throughout the year numerous settlement meetings occurred. A 5 day trial on the Rules was set to begin March 18, 2013 (3rd trial setting), though Division One remains optimistic that a stipulation can be reached with the objectors prior to trial.

The well enforcement program had a busy year sending out approximately 100 cease and desist orders and 25 install flow meter orders. Additionally, three compliance cases (case nos. 12CW55, 56, & 57) and one contempt of court case (case no. 04CW134) were successfully litigated in water court over the course of the year. As

a result of this year's annual meter read program, the Well Team identified nine wells that appeared to have operated against Cease & Desist Orders in IY 2012. Of those, five are being forwarded to the Attorney General's office seeking a verified complaint for pumping against Cease and Desist Orders, and two are being forwarded to the Attorney General's office seeking a contempt of court action for illegal pumping against an injunction.

### **Well Administration – Republican River Basin**

In 2012, the administration of the Republican River Basin Groundwater Measurement Rules (Rules) transitioned from the Denver office to the Greeley office. The program continues making progress towards the completion of an inventory of all wells within the scope of the Rules. Additionally, the fourth year of this program is transitioning from program start-up to administration and enforcement efforts. As such, the Greeley office and Republican field crew distributed approximately 135 Notice of Violation Letters, 60 Cease & Desist Orders, 85 Meter Certification Expiring Letters and 600 Annual Usage Reporting Forms. The Well Team also continued efforts in support of the 2010 Abandonment List, providing field inspections and in some instances providing affidavits and testimony for several Protest Cases in Water Court.

In addition, the Republican River well team has been busy assisting the Designated Basins Team in the administration of well permit volume limits by posting and documenting Orders on approximately 250 wells that exceeded their annual limitation in the 2011 Irrigation Year. These Orders are being administered by the Designated Basins Team in Denver, and require the reduction of the annual pumping limits for 2012 Irrigation Year by the amount over-pumped in 2011.



## **Compact Administration**

Division One continues to administer the South Platte Compact, the Laramie River Decree, and the 1997 Addendum to the Sand Creek Agreement in conformance with the requirements of those respective documents. As previously stated, most of the 2012 IY was extremely dry because of below average snowpack, below average precipitation and above average temperatures. The low snowpack and below average precipitation resulted in a total of 146 days of call under the South Platte Compact in 2012 between April 1 and October 15, 2012. All diversions in the Laramie River basin continued to be in accordance with that decree. Wyoming noticed Colorado that they were calling for water in the Sand Creek Drainage, and Colorado complied with the terms of the Sand Creek Agreement requiring administration of Colorado water rights to deliver the specified state line flows (40 or 35 cfs) under the terms of the Agreement.

The Republican River Compact continues to be administered by staff in both the Division One and the Denver office in conjunction with the Republican River Water Conservation District. Much of the work on this Compact has focused on the proposed Compact Compliance Pipeline with discussions and negotiations between Colorado, Kansas, and Nebraska occurring

during all of IY 2012 without a final resolution with all parties. The Republican River Water Conservation District continues to move forward with the Compact Compliance Pipeline, with significant completion of the construction project in 2012. A special Pipeline dedication ceremony was held on August 16, 2012 to recognize the completion of the Pipeline and delivery of water to the Republican River. To aid in Compact Compliance, the State Engineer continues to curtail surface water rights junior to the Compact.

## **COMMUNITY INVOLVEMENT**

Personnel of Division One continue to attend and participate in Ditch Company and Conservancy District meetings (when requested); meetings of water user, realtor, and homeowner groups; meetings related to high groundwater issues in the Sterling and LaSalle/Gilcrest areas; public meetings on House Bill 12-1278 – South Platte Alluvial Aquifer Study; and South Platte Basin Roundtable meetings. Division One staff also continued participating in the Lower South Platte Irrigation Research and Demonstration Project advisory committee, as well as meet with other groups examining alternatives to the traditional “buy and dry” approach to water transfers from irrigation to municipal use.



## TABLES

**Table 1 – Storage Comparison**

*Runoff Forecast*

SOUTH PLATTE RIVER BASIN  
Reservoir Storage (1000 AF) - End of January

RESERVOIR	USABLE CAPACITY	USABLE STORAGE		AVERAGE
		THIS YEAR	LAST YEAR	
ANTERO	19.9	19.9	17.0	16.4
BARR LAKE	30.1	25.9	23.1	24.0
BLACK HOLLOW	6.5	2.2	2.3	3.9
BOYD LAKE	48.4	20.7	12.8	32.1
BUTTON ROCK	16.2	14.4	15.2	13.0
CACHE LA POUDDRE	10.1	5.7	3.6	7.2
CARTER	108.9	15.2	28.5	84.6
CHAMBERS LAKE	8.8	1.8	2.0	3.0
CHEESMAN	79.0	68.7	72.7	59.7
COBB LAKE	22.3	2.8	3.4	13.9
ELEVEN MILE	98.0	99.2	99.8	95.9
EMPIRE	36.5	13.4	13.1	22.8
FOSSIL CREEK	11.1	3.8	7.6	6.8
GROSS	41.8	29.9	23.7	26.0
HALLIGAN	6.4	3.7	3.8	4.3
HORSECREEK	14.7	13.8	7.5	11.6
HORSETOOTH	149.7	108.4	100.2	99.0
JACKSON	26.1	24.0	19.4	26.1
JULESBURG	20.5	16.2	17.6	18.8
LAKE LOVELAND	10.3	11.4	10.9	8.7
LONE TREE	8.7	6.8	5.8	6.4
MARIANO	5.4	1.5	3.9	4.2
MARSHALL	10.0	4.8	4.2	5.1
MARSTON	13.0	8.5	9.3	12.8
MILTON	23.5	18.0	14.1	15.5
POINT OF ROCKS	70.6	45.1	30.9	57.0
PREWITT	28.2	22.2	6.1	19.3
RIVERSIDE	55.8	42.5	36.7	41.7
SPINNEY MOUNTAIN	49.0	36.1	31.7	33.3
STANDLEY	42.0	37.7	40.0	33.1
TERRY LAKE	8.0	5.8	5.7	5.3
UNION	13.0	11.9	8.1	10.6
WINDSOR	15.2	9.7	1.3	10.8

Information taken from Colorado Basin Outlook Report, February 1, 2013

SOUTH PLATTE RIVER BASIN  
WATER SNOWPACK

WATERSHED	NUMBER OF DATA SITES	THIS YEAR AS % OF	
		LAST YEAR	AVERAGE
BIG THOMPSON BASIN	7	83	91
BOULDER CREEK BASIN	5	68	88
CACHE LA POUDDRE BASIN	8	84	98
CLEAR CREEK BASIN	4	91	109
SAINT VRAIN BASIN	4	82	88
UPPER SOUTH PLATTE BASIN	15	92	104

\*Information taken from Colorado Basin Outlook Report, February 1, 2013.



Table 2 - Transmountain Diversion Summary

**2012 TRANSMOUNTAIN DIVERSION SUMMARY - INFLOWS  
(November 2011 - October 2012)**

RECIPIENT								SOURCE		
WD	ID	NAME	STREAM	10 YEAR AVG		CURRENT YEAR		WD	ID	STREAM
				AF	DAYS	AF	DAYS			
3	4604	WILSON SUPPLY DITCH	CACHE LA POUFRE RIVER	1,238	71	438	69	48	4604	SAND & DEADMAN CR.
3	4608	DEADMAN DITCH	CACHE LA POUFRE RIVER	444	62	284	71	48	4608	DEADMAN CREEK
3	4606	BOB CREEK DITCH	CACHE LA POUFRE RIVER	108	38	94	46	48	4606	NUNN CREEK
3	4607	COLUMBINE DITCH	CACHE LA POUFRE RIVER	0	0	0	0	48	4607	DEADMAN CREEK
3	4600	LARAMIE-POUDRE TUNNEL	CACHE LA POUFRE RIVER	8,590	100	9,264	160	48	4600	LARAMIE RIVER
3	4605	SKYLINE DITCH	CACHE LA POUFRE RIVER	32	6	158	40	48	4605	LARAMIE RIVER
3	4602	CAMERON PASS DITCH	CACHE LA POUFRE RIVER	59	33	38	44	47	4602	MICHIGAN RIVER
3	4603	MICHIGAN DITCH	CACHE LA POUFRE RIVER	2,099	348	834	345	47	4603	MICHIGAN RIVER
3	4601	GRAND RIVER DITCH	CACHE LA POUFRE RIVER	8,229	161	4,957	155	51	4601	COLORADO RIVER
4	4634	ADAMS TUNNEL	BIG THOMPSON RIVER	120,801	334	149,226	335	51	4634	COLORADO RIVER
6	4655	MOFFAT TUNNEL	SOUTH PLATTE RIVER	28,215	360	21,743	366	51	4655	FRASER RIVER
7	4625	BERTHOUD PASS DITCH	CLEAR CREEK	332	98	203	124	51	4625	FRASER RIVER
7	4626	VIDLER TUNNEL	CLEAR CREEK	345	67	222	71	36	4626	MONTEZUMA CREEK
7	4682	STRAIGHT CREEK TUNNEL	CLEAR CREEK	148	365	89	366	36	4682	STRAIGHT CREEK
8	653	ROBERTS TUNNEL	SOUTH PLATTE RIVER	38,544	270	59,339	260	36	4684	BLUE RIVER
23	4611	BOREAS PASS DITCH	SOUTH PLATTE RIVER	73	59	2	18	36	4685	INDIANA CREEK
23	4612	HOOSIER PASS DITCH	ARKANSAS RIVER	4,052	188	1,817	150	36	4683	BLUE RIVER
23	4490	AURORA HOMESTAKE	SOUTH PLATTE RIVER	15,659	251	25,087	351	37	4644	HOMESTAKE CREEK



**Table 3 – Reservoir Storage Summary**

**2011-2012 RESERVOIR STORAGE SUMMARIES BY DISTRICT**

WATER DISTRICT 1

WD	ID	RESERVOIR NAME	SOURCE STREAM	AMOUNT IN STORAGE (AF)				
				MINIMUM		MAXIMUM		END OF YEAR
				AF	DATE	AF	DATE	AF
1	3009	CORNISH PLAINS RESERVOIR	CACHE LA POUUDRE RIVER	1,422	10/31/12	2,559	11/30/11	1,422
1	3400	VANCIL	SOUTH PLATTE	1,338	10/31/12	3,894	11/30/11	1,338
1	3592	HORSE CREEK RESERVOIR	HORSE CREEK	446	08/30/12	13,245	03/31/12	446
1	3570	BIJOU #2	SOUTH PLATTE	115	08/31/12	2,520	11/30/11	115
1	3609	PROSPECT RESERVOIR	PROSPECT CREEK	1,083	10/31/12	6,275	03/31/12	1,083
1	3651	RIVERSIDE	SOUTH PLATTE	7,096	09/30/12	63,113	03/31/12	14,612
1	3816	EMPIRE	SOUTH PLATTE	2,755	08/19/12	37,626	03/31/12	2,755
1	3817	JACKSON	SOUTH PLATTE	2,560	08/20/12	17,450	03/31/12	3,360
1	3902	LORD RESERVOIR #4	SOUTH PLATTE	0	06/09/12	622	03/31/12	0
1	4000	STAGECOACH RESERVOIR	SOUTH PLATTE	1	10/31/12	61	06/30/12	1
1		TOTALS		16,816		147,365		25,132

**2011-2012 RESERVOIR STORAGE SUMMARIES BY DISTRICT**

WATER DISTRICT 2

WD	ID	RESERVOIR NAME	SOURCE STREAM	AMOUNT IN STORAGE (AF)				
				MINIMUM		MAXIMUM		END OF YEAR
				AF	DATE	AF	DATE	AF
2	3050	SOUTH RESERVOIR COMPLEX	SOUTH PLATTE	736	05/31/12	1,445	10/31/12	1,445
2	3361	KEN MITCHELL LAKES	SOUTH PLATTE	1,598	08/31/12	2,021	02/29/12	1,606
2	3375	QUINCY RESERVOIR	SOUTH PLATTE	1,695	09/30/12	2,458	04/30/12	1,695
2	3379	AURORA RESERVOIR	SOUTH PLATTE	26,363	11/30/11	31,518	03/31/12	28,564
2	3699	WEST GRAVEL LAKES COMBINED	SOUTH PLATTE	2,289	04/30/12	2,766	11/30/11	2,500
2	3700	TANI LAKES COMBINED	SOUTH PLATTE	10,235	08/31/12	14,260	10/31/12	14,260
2	3837	OASIS RES/BARR	SOUTH PLATTE	2,838	09/30/12	28,812	03/31/12	3,920
2	3858	LOWER LATHAM	SOUTH PLATTE	2,613	09/30/12	5,724	02/29/12	3,283
2	3861	GREAT WESTERN	WALNUT CREEK	438	10/31/12	2,352	03/31/12	438
2	3876	MILTON	SOUTH PLATTE	1,220	09/30/12	21,761	03/31/12	1,934
2	3903	STANDLEY	WOMAN CREEK	30,063	10/31/12	39,551	06/30/12	30,063
2		OTHERS		1,827		3,109		2,779
2		TOTALS		81,915		155,777		92,487



**2011-2012 RESERVOIR STORAGE SUMMARIES BY DISTRICT**

WATER DISTRICT 3

WD	ID	RESERVOIR NAME	SOURCE STREAM	AMOUNT IN STORAGE (AF)				
				MINIMUM		MAXIMUM		END OF YEAR
				AF	DATE	AF	DATE	AF
3	3676	LONG DRAW/GRAND RIVER	LONG DRAW CREEK	1,346	09/30/12	10,625	05/31/12	1,346
3	3678	MOUNTAIN SUPPLY RESERVOIR #20	JOE WRIGHT RESERVOIR	3,521	11/30/11	7,086	06/30/12	4,619
3	3679	CHAMBERS	JOE WRIGHT CREEK	2,662	10/31/12	7,315	11/30/11	2,662
3	3683	BARNES MEADOW RESERVOIR	BARNES MEADOWS CREEK	1,867	12/31/11	2,349	05/31/12	2,094
3	3697	NORTH POUUDRE #2/DEMMELE LAKE	N FK POUUDRE RIVER	1,736	10/31/12	3,632	03/31/12	1,736
3	3698	NORTH POUUDRE #5/BEE LAKE	N FK POUUDRE RIVER	3,808	10/31/12	5,510	12/31/11	3,808
3	3699	NORTH POUUDRE RESERVOIR #6	N FK POUUDRE RIVER	4,273	10/31/12	8,423	02/29/12	4,273
3	3702	NORTH POUUDRE #3/HACKEL LAKE	N FK POUUDRE RIVER	2,280	10/31/12	2,977	12/31/11	2,280
3	3704	NORTH POUUDRE #4	N FK POUUDRE RIVER	540	07/31/12	906	01/31/12	613
3	3707	INDIAN CREEK/MTN SUPPLY #16	INDIAN CREEK	349	04/30/12	1,534	05/31/12	1,191
3	3708	MOUNTAIN SUPPLY RESERVOIR #18	BOX ELDER CREEK	300	10/31/12	810	05/31/12	300
3	3712	HALLAGAN/NORTH POUUDRE #16	N FK POUUDRE RIVER	1,221	09/30/12	5,729	02/29/12	1,622
3	3713	SEAMAN/MILTON SEAMAN	N FK POUUDRE RIVER	611	11/30/11	3,837	09/30/12	3,628
3	3715	PARK CREEK	PARK CREEK	2,638	08/31/12	6,826	03/31/12	2,658
3	3716	NORTH POUUDRE #15	N FK POUUDRE RIVER	1,866	09/30/12	4,822	03/31/12	1,887
3	3725	DOUGLASS	CACHE LA POUUDRE RIVER	3,288	08/31/12	8,070	03/31/12	3,686
3	3726	WORSTER	SHEEP CREEK	452	11/30/11	2,653	06/30/12	926
3	3727	WINDSOR RESERVOIR #8	CACHE LA POUUDRE RIVER	2,288	08/31/12	7,618	04/30/12	3,628
3	3728	NO. 8 ANNEX	CACHE LA POUUDRE RIVER	550	08/31/12	2,673	04/30/12	1,069
3	3730	COBB LAKE	CACHE LA POUUDRE RIVER	11,940	10/31/12	19,500	11/30/11	11,940
3	3732	HORSETOOTH	DIXON CANYON CREEK	56,662	09/30/12	144,524	03/31/12	66,535
3	3735	CURTIS	CACHE LA POUUDRE RIVER	262	05/31/12	703	01/31/12	524
3	3736	ROCKY RIDGE/WATER SUPPLY #1	CACHE LA POUUDRE RIVER	3,383	01/31/12	3,732	04/30/12	3,503
3		SUBTOTALS		107,843		261,854		126,528

**2011-2012 RESERVOIR STORAGE SUMMARIES BY DISTRICT**

WATER DISTRICT 3 (CONTINUED)

WD	ID	RESERVOIR NAME	SOURCE STREAM	AMOUNT IN STORAGE (AF)				
				MINIMUM		MAXIMUM		END OF YEAR
				AF	DATE	AF	DATE	AF
		BALANCE FROM PREVIOUS PAGE		107,843		261,854		126,528
3	3737	WATER SUPPLY #2 & #3	CACHE LA POUFRE RIVER	1,472	08/31/12	3,840	03/31/12	1,553
3	3738	WINDSOR RESERVOIR	CACHE LA POUFRE RIVER	3,443	08/31/12	17,328	04/30/12	12,573
3	3739	WATER SUPPLY #4	WATER SUPPLY RES #2 & #3	355	10/31/12	797	05/31/12	355
3	3740	KLUVER	CACHE LA POUFRE RIVER	318	10/31/12	594	06/30/12	318
3	3742	LONG POND/WATER SUPPLY #5	CACHE LA POUFRE RIVER	1,884	08/31/12	2,833	02/29/12	2,044
3	3744	BLACK HOLLOW	CACHE LA POUFRE RIVER	3,409	10/31/12	5,936	06/30/12	3,409
3	3745	DOWDY LAKE RESERVOIR	SOUTH PINE CREEK	756	10/31/12	898	04/30/12	756
3	3751	SOUTH GRAY RESERVOIR	BOX ELDER CREEK	139	08/31/12	633	02/29/12	177
3	3770	WINDSOR LAKE	CACHE LA POUFRE RIVER	2,592	11/30/11	3,008	02/29/12	2,671
3	3772	SEELEY	CACHE LA POUFRE RIVER	856	12/31/11	1,155	06/30/12	1,069
3	3774	FOSSIL CREEK	FOSSIL CREEK	4,630	09/30/12	11,100	01/31/12	5,507
3	3775	TIMNATH	DUCK SLOUGH	591	09/30/12	10,575	03/31/12	932
3	3780	CLAYMORE	CACHE LA POUFRE RIVER	95	08/31/12	866	03/31/12	218
3	3786	WOOD	ROLLARD DRAW	635	10/31/12	2,551	03/31/12	635
3	3804	WARREN	CACHE LA POUFRE RIVER	761	10/31/12	1,699	06/30/12	761
3	3805	TERRY/LARIMER WELD	CACHE LA POUFRE RIVER	2,383	09/30/12	7,903	05/31/12	3,129
3	3814	PANHANDLE RESERVOIR	PANHANDLE CREEK	1,017	11/30/11	1,017	11/30/11	1,017
3	3952	RAWHIDE	CACHE LA POUFRE RIVER	14,871	02/29/12	15,258	07/31/12	15,160
3		OTHERS		4,922		9,235		5,705
3		TOTALS		152,972		359,080		184,517



**2011-2012 RESERVOIR STORAGE SUMMARIES BY DISTRICT**

WATER DISTRICT 4

WD	ID	RESERVOIR NAME	SOURCE STREAM	AMOUNT IN STORAGE (AF)				
				MINIMUM		MAXIMUM		END OF YEAR
				AF	DATE	AF	DATE	AF
4	3659	LOVELAND MUNICIPAL	BIG THOMPSON	4,440	04/30/12	6,782	10/31/12	6,782
4	4110	BOYD LAKE	BIG THOMPSON	16,006	09/30/12	41,690	11/30/12	16,486
4	4116	DONATH	BIG THOMPSON	0	08/31/12	1,055	04/30/12	0
4	4123	HORSETOOTH RESERVOIR	BIG THOMPSON	1,701	10/31/12	6,339	01/31/12	1,701
4	4131	LOVELAND GREELEY RESERVOIR	BIG THOMPSON	3,183	09/30/12	11,915	11/30/11	4,425
4	4133	LOVELAND LAKE	BIG THOMPSON	1,005	10/31/12	1,920	02/29/12	1,005
4	4134	BOEDECKER LAKE/MARINO	BIG THOMPSON	1,108	08/31/12	4,011	04/30/12	2,916
4	4136	LON HAGLER	BIG THOMPSON	2,490	09/30/12	4,874	11/30/11	4,425
4	4137	LONE TREE	BIG THOMPSON	2,360	08/31/12	8,574	04/30/12	2,427
4	4146	WELCH LAKE	BIG THOMPSON	1,764	08/31/12	5,491	02/29/12	1,872
4	4156	BOULDER & LARIMER/ISH	LITTLE THOMPSON	1,625	10/31/12	6,274	11/30/11	1,625
4	4166	HERTHA RESERVOIR	DRY CREEK HERTHA	894	08/31/12	1,692	12/31/11	941
4	4513	CARTER	BIG THOMPSON	45,092	10/31/12	89,148	04/30/12	45,092
4		OTHERS		1,407		2,777		1,631
4		TOTALS		83,075		192,542		91,328

**2011-2012 RESERVOIR STORAGE SUMMARIES BY DISTRICT**

WATER DISTRICT 5

WD	ID	RESERVOIR NAME	SOURCE STREAM	AMOUNT IN STORAGE (AF)				
				MINIMUM		MAXIMUM		END OF YEAR
				AF	DATE	AF	DATE	AF
5	3905	UNION	ST. VRAIN	620	10/31/12	12,543	11/30/11	620
5	4010	BUTTON ROCK	ST. VRAIN	12,123	04/30/12	15,801	07/31/12	16,197
5	4020	BEAVER POND	BEAVER CREEK	320	11/30/12	1,710	05/31/12	567
5	4032	HIGHLAND #2	ST. VRAIN	640	08/31/12	3,346	05/31/12	1,135
5	4037	HIGHLAND #1	ST. VRAIN	428	07/31/12	735	04/30/12	490
5	4038	HIGHLAND #3	ST. VRAIN	342	11/30/11	778	04/30/12	474
5	4063	PLEASANT VALLEY	ST. VRAIN	1,794	09/30/12	2,943	03/31/12	2,369
5	4065	MCCALL RESERVOIR	ST. VRAIN	429	10/31/12	464	11/30/12	429
5	4067	OLIGARCHY RESERVOIR #1	ST. VRAIN	767	09/30/12	1,640	11/30/11	1,064
5	4071	FOOTHILLS	ST. VRAIN	585	08/31/12	4,024	04/30/12	585
5	4072	CLOVER BASIN RESERVOIR	ST. VRAIN	338	09/30/12	584	11/30/11	460
5	4073	MCINTOSH	ST. VRAIN	1,057	10/31/12	2,104	02/28/12	1,057
5	4076	LEFT HAND PARK	LEFT HAND CREEK	620	10/31/12	1,490	06/30/12	620
5	4081	LAGERMANN	LEFT HAND CREEK	700	10/31/12	968	01/31/12	700
5	4379	NEW THOMAS RESERVOIR	HOWLETT GULCH	1,445	10/31/12	1,971	04/30/12	1,445
5	4488	LEFT HAND VALLEY	LEFT HAND CREEK	663	10/31/12	1,484	07/31/12	663
5		TOTALS		22,871		52,585		28,875



**2011-2012 RESERVOIR STORAGE SUMMARIES BY DISTRICT**

WATER DISTRICT 6

WD	ID	RESERVOIR NAME	SOURCE STREAM	AMOUNT IN STORAGE (AF)				
				MINIMUM		MAXIMUM		END OF YEAR
				AF	DATE	AF	DATE	AF
6	3998	GOOSE HAVEN RESERVOIR COMPLEX	BOULDER CREEK	1,402	06/30/12	1,618	02/28/12	1,616
6	4172	BARKER	BOULDER CREEK	8,487	10/31/12	11,215	05/31/12	8,487
6	4173	BASELINE	BOULDER CREEK	1,299	11/30/11	3,192	07/31/12	3,047
6	4178	HILLCREST	BOULDER CREEK	1,835	09/30/12	2,141	12/31/11	1,852
6	4180	LEGGETT	BOULDER CREEK	1,322	09/30/12	1,552	12/31/11	1,335
6	4185	PANAMA	BOULDER CREEK	900	10/31/12	3,080	05/31/12	900
6	4187	SIX MILE	BOULDER CREEK	320	09/30/12	1,300	04/30/12	350
6	4199	GROSS	SOUTH BOULDER CREEK	26,659	01/31/12	38,350	06/30/12	30,123
6	4212	MARSHALL	SOUTH BOULDER CREEK	4,953	10/31/12	9,583	04/30/12	4,953
6	4230	VALMONT	SOUTH BOULDER CREEK	6,569	09/30/12	7,277	12/31/11	6,610
6	4238	SILVER	NORTH BOULDER CREEK	2,026	03/31/12	3,976	06/30/12	3,736
6	4489	GOOSE	NORTH BOULDER CREEK	1,036	11/30/11	1,036	11/30/11	1,036
6	4515	BOULDER	BOULDER CREEK	6,370	04/30/12	9,284	07/31/12	8,816
6		OTHERS		1,510		3,194		2,296
6		TOTALS		65,656		96,798		75,157

**2011-2012 RESERVOIR STORAGE SUMMARIES BY DISTRICT**

WATER DISTRICT 7

WD	ID	RESERVOIR NAME	SOURCE STREAM	AMOUNT IN STORAGE (AF)				
				MINIMUM		MAXIMUM		END OF YEAR
				AF	DATE	AF	DATE	AF
7	3018	WELTON RESERVOIR	CLEAR CREEK	6,512	10/31/12	8,782	11/30/11	6,512
7	3308	BLUNN	CLEAR CREEK	5,045	11/30/11	6,211	06/30/12	5,910
7	3324	RALSTON	RALSTON CREEK	6,375	04/30/12	10,422	07/31/12	10,151
7	3406	COORS B #3	CLEAR CREEK	2,638	10/31/12	3,056	11/30/11	2,638
7	3407	COORS B #4	CLEAR CREEK	4,000	11/30/11	4,000	11/30/11	4,000
7	3702	FAIRMOUNT	CLEAR CREEK	453	04/30/12	945	11/30/11	936
7	4030	GOLDEN RESERVOIR/WEST	CLEAR CREEK	1,043	10/31/12	1,351	05/31/12	1,043
7	4411	MAPLE GROVE	SOUTH CLEAR CREEK	759	01/31/12	1,027	05/31/12	851
7	4415	LONG LAKE RESERVOIR UPPER	RALSTON CREEK	979	04/30/12	1,055	05/31/12	745
7		OTHERS		2,350		2,933		2,629
7		TOTALS		30,154		39,782		35,415



**2011-2012 RESERVOIR STORAGE SUMMARIES BY DISTRICT**

WATER DISTRICT 8

WD	ID	RESERVOIR NAME	SOURCE STREAM	AMOUNT IN STORAGE (AF)				
				MINIMUM		MAXIMUM		END OF YEAR
				AF	DATE	AF	DATE	AF
8	3500	PLATTE CANON RESERVOIR	SOUTH PLATTE	182	09/30/12	294	03/31/12	183
8	3514	CHATFIELD	SOUTH PLATTE	22,871	09/30/12	27,330	02/29/13	22,910
8	3532	CHERRY CREEK	CHERRY CREEK	11,219	10/31/12	13,328	04/30/12	11,219
8	3832	MCLELLAN	DAD CLARK DITCH	4,965	05/31/12	5,845	02/29/12	5,450
8	3983	STRONTIA SPRINGS DVR DAM	SOUTH PLATTE	6,972	10/31/12	7,477	01/31/12	6,972
8	4097	SOUTH PLATTE LAKE	SOUTH PLATTE	454	10/31/12	5,414	01/31/12	454
8		TOTALS		46,663		59,688		47,188

**2011-2012 RESERVOIR STORAGE SUMMARIES BY DISTRICT**

WATER DISTRICT 9

WD	ID	RESERVOIR NAME	SOURCE STREAM	AMOUNT IN STORAGE (AF)				
				MINIMUM		MAXIMUM		END OF YEAR
				AF	DATE	AF	DATE	AF
9	3501	MARSTON	SOUTH PLATTE	11,478	03/31/12	24,351	11/30/11	15,947
9	3815	SODA #1, #2	BEAR CREEK	786	09/30/12	1,451	03/31/12	859
9	3999	BEAR CREEK RESERVOIR	BEAR CREEK	1,681	08/31/12	1,923	02/29/12	1,882
9	4281	BOWLES	BEAR CREEK	1,048	10/31/12	2,062	04/30/12	1,048
9	4314	PATRICK	BEAR CREEK	1,161	11/30/11	1,161	11/30/11	1,161
9		OTHERS		1,577		2,769		1,723
9		TOTALS		17,731		33,717		22,620



**2011-2012 RESERVOIR STORAGE SUMMARIES BY DISTRICT**

WATER DISTRICT 23

WD	ID	RESERVOIR NAME	SOURCE STREAM	AMOUNT IN STORAGE (AF)				
				MINIMUM		MAXIMUM		END OF YEAR
				AF	DATE	AF	DATE	AF
23	3904	ANTERO	S FK SOUTH PLATTE	15,369	10/31/12	16,374	11/30/11	15,369
23	3962	MONTGOMERY	MID FK SOUTH PLATTE	693	03/31/12	2,120	08/31/12	2,067
23	3965	ELEVEN MILE	MID FK SOUTH PLATTE	98,017	09/30/12	100,071	01/31/12	98,153
23	3981	JEFFERSON LAKE RESERVOIR	JEFFERSON LAKE	0	10/31/12	903	05/31/12	0
23	4013	SPINNEY MOUNTAIN	MID FK SOUTH PLATTE	37,861	10/31/12	51,447	03/31/12	37,861
23	4016	JAMES TINGLE RESEROIVR	MICHIGAN CREEK	26	04/30/12	214	11/30/11	58
23		TOTALS		151,966		171,129		153,508

**2011-2012 RESERVOIR STORAGE SUMMARIES BY DISTRICT**

WATER DISTRICT 64

WD	ID	RESERVOIR NAME	SOURCE STREAM	AMOUNT IN STORAGE (AF)				
				MINIMUM		MAXIMUM		END OF YEAR
				AF	DATE	AF	DATE	AF
64	3551	NORTH STERLING	SOUTH PLATTE	2,782	09/30/12	73,439	03/31/12	8,852
64	3552	PREWITT	SOUTH PLATTE	4,832	9/30/12	27,790	04/30/12	6,135
64	3906	JULESBURG	SOUTH PLATTE	3,760	09/30/12	22,666	03/31/12	5,894
64		TOTALS		11,374		123,895		20,881

**2011-2012 RESERVOIR STORAGE SUMMARIES BY DISTRICT**

WATER DISTRICT 80

WD	ID	RESERVOIR NAME	SOURCE STREAM	AMOUNT IN STORAGE (AF)				
				MINIMUM		MAXIMUM		END OF YEAR
				AF	DATE	AF	DATE	AF
80	3550	CHEESMAN	S FK SOUTH PLATTE	51,982	09/30/12	75,048	11/30/11	53,170
80	3658	LININGER RESERVOIR	BEAVER CREEK	420	10/31/12	456	07/31/12	420
80	3828	ALTURA RESERVOIR	GENEVA CREEK	223	06/30/12	301	05/31/12	223
80	3829	WELLINGTON	N FK SOUTH PLATTE	1,976	08/31/12	3,261	05/31/12	1,976
80		TOTAL		54,601		79,066		55,789



**Table 4 – Water Court Activities**

WATER COURT ACTIVITIES  
Calendar Year 2012

New Applications made to water court this year.....306  
 Referee Rulings Reviewed.....263  
 Decrees Issued by Court this year.....326  
 Dismissals.....22

TYPES OF RULINGS

TYPE OF RULING	NUMBER OF CASES	NUMBER OF STRUCTURES
Findings of Diligence on Conditional Rights	87	262
Exchanges Adjudicated	15	76
Conditional Rights Made Absolute	28	47
Conditional Rights Cancelled	29	61
Surface Water Rights Adjudicated	8	13
Underground Water Rights Adjudicated	122	549
Water Storage Rights Adjudicated	12	44
Plans for Augmentation Adjudicated	42	140
Changes of Water Rights Adjudicated	38	155
Withdrawn	14	14
Recharge Sites	6	43
Amendments and Clerical Corrections	13	45
Abandonment of Structure	5	10
Removed from Abandonment List	9	13
Alternate Points of Diversion	3	29

**Table 5 – Main Steam Call Record**

CALLING PRIORITY 2011-2012

Start Date	End Date	Water Source	WDID	Structure Name	Appro Date	Admin No	Decreed Amt	Districts Affected	Set Comments
12/6/2011 8:00	2011-12-22 12:00	SOUTH PLATTE RIVER	801002	DENVER CONDUIT NO 20	1899-05-01	18018.00000	38.0800 CFS	8,23,80	
2012-01-04 08:00	2012-01-28 08:00	SOUTH PLATTE RIVER	200802	BURLINGTO N D RIVER HG	1909-01-13	21562.00000	900.0000 CFS	2,8,9,23,80	
2012-03-23 08:00	2012-03-30 08:00	SOUTH PLATTE RIVER	200825	HEWES COOK DITCH	1909-05-29	21698.00000	510.0000 CFS	2,7,8,9,23,80	BYPASS CALL FROM 0200817 - EVANS NO 2 DITCH
2012-03-27 08:00	2012-03-30 08:00	SOUTH PLATTE RIVER	6403906	JULESBURG RES	1972-06-12	44723.00000	104.0000 CFS	1, 2, 3, 4, 5, 6, 64	BYPASS CALL FROM 0100518 - LOWER PLATTE BEAVER D
2012-03-30 08:00	2012-03-31 08:00	SOUTH PLATTE RIVER	103552	PREWITT RES	1972-06-12	44723.00000	104.0000 CFS	1, 2, 3, 4, 5, 6, 64	BYPASS CALL FROM 0100518 - LOWER PLATTE BEAVER D
2012-03-30 08:00	2012-03-31 08:00	SOUTH PLATTE RIVER	200825	HEWES COOK DITCH	1909-01-13	21562.00000	900.0000 CFS	2,7,8,9,23,80	BYPASS CALL FROM 0200802 - BURLINGTON D RIVER HG
2012-03-31 08:00	2012-04-01 08:00	SOUTH PLATTE RIVER	200825	HEWES COOK DITCH	1885-11-20	13108.00000	350.0000 CFS	2,7,8,9,23,80	BYPASS CALL FROM 0200802 - BURLINGTON D RIVER HG
2012-03-31 08:00	2012-04-01 08:00	SOUTH PLATTE RIVER	100829	PREWITT INLET CANAL	1977-06-30	47847.46567	102.0000 CFS	1,2,3,4,5,6	BYPASS CALL FROM 0100519 - TREMONT DITCH
2012-04-01 08:00	2012-04-04 08:00	SOUTH PLATTE RIVER	200825	HEWES COOK DITCH	1909-01-13	21562.00000	900.0000 CFS	2,7,8,9,23,80	BYPASS CALL FROM 0200802 - BURLINGTON D RIVER HG
2012-04-01 08:00	2012-04-02 08:00	SOUTH PLATTE RIVER	100829	PREWITT INLET CANAL	1986-06-17	50403.49841	1359.0000 AF	1,2,3,4,5,6	BYPASS CALL FROM 0103400 - VANCIL RES

CALLING PRIORITY 2011-2012 (continued)

Start Date	End Date	Water Source	WDID	Structure Name	Appro Date	Admin No	Decreed Amt	Districts Affected	Set Comments
2012-04-02 08:00	2012-04-03 08:00	SOUTH PLATTE RIVER	100687	NORTH STERLING CANAL	1996-05-08	53454.00000	294.0000 CFS	1, 2, 3, 4, 5, 6	
2012-04-03 08:00	2012-04-07 08:00	SOUTH PLATTE RIVER	100519	TREMONT DITCH	1977-06-30	47847.46567	102.0000 CFS	1, 2, 3, 4, 5, 6	
2012-04-04 08:00	2012-04-05 08:00	SOUTH PLATTE RIVER	200802	BURLINGTON D RIVER HG	1909-01-13	21562.00000	900.0000 CFS	2, 8, 9, 23, 80	
2012-04-04 08:00	2012-04-05 08:00	SOUTH PLATTE RIVER	200825	HEWES COOK DITCH	1909-05-29	21698.00000	510.0000 CFS	2, 7	BYPASS CALL FROM 0200817 - EVANS NO 2 DITCH
2012-04-05 08:00	2012-04-06 08:00	SOUTH PLATTE RIVER	200825	HEWES COOK DITCH	1909-01-13	21562.00000	900.0000 CFS	2, 7, 8, 9, 23, 80	BYPASS CALL FROM 0200802 - BURLINGTON D RIVER HG
2012-04-06 08:00	2012-04-12 08:00	SOUTH PLATTE RIVER	200825	HEWES COOK DITCH	1885-11-20	13108.00000	350.0000 CFS	2, 7, 8, 9, 23, 80	BYPASS CALL FROM 0200802 - BURLINGTON D RIVER HG
2012-04-07 08:00	2012-04-10 08:00	SOUTH PLATTE RIVER	100507	BIJOU CANAL	1907-05-31	20969.00000	417.0000 CFS	1, 2, 3, 4, 5, 6	BYPASS CALL FROM 0100503 - RIVERSIDE CANAL
2012-04-07 08:00	2012-04-11 08:00	SOUTH PLATTE RIVER	6400535	SOUTH PLATTE DITCH	1977-06-30	47847.46567	102.0000 CFS	1, 64	BYPASS CALL FROM 0100519 - TREMONT DITCH
2012-04-10 08:00	2012-04-11 08:00	SOUTH PLATTE RIVER	100515	UPPER PLATTE BEAVER CNL	1888-10-01	14154.00000	450.0000 CFS	1,2,3,4,5,6	BYPASS CALL FROM 0100507 - BIJOU CANAL
2012-04-11 08:00	2012-04-12 08:00	SOUTH PLATTE RIVER	100518	LOWER PLATTE BEAVER D	1888-10-01	14154.00000	450.0000 CFS	1,2,3,4,5,6	BYPASS CALL FROM 0100507 - BIJOU CANAL
2012-04-11 08:00	2012-04-15 08:00	SOUTH PLATTE RIVER	100829	PREWITT INLET CANAL	1929-12-31	31423.29219	695.0000 CFS	1	
2012-04-12 08:00	2012-04-12 16:00	SOUTH PLATTE RIVER	100518	LOWER PLATTE BEAVER D	1888-10-01	14154.00000	450.0000 CFS	1, 2, 3, 4, 5, 6, 7, 8, 9, 23,	BYPASS CALL FROM 0100507 - BIJOU CANAL
2012-04-12 08:00	2012-04-16 08:00	SOUTH PLATTE RIVER	6499999	SOUTH PLATTE RIVER COMPACT	1989-05-02	51134.50891	35.0000 CFS	64	BYPASS CALL FROM 6400504 - PETERSON DITCH



CALLING PRIORITY 2011-2012 (continued)

Start Date	End Date	Water Source	WDID	Structure Name	Appro Date	Admin No	Decreed Amt	Districts Affected	Set Comments
2012-04-12 16:00	2012-04-15 08:00	SOUTH PLATTE RIVER	100518	LOWER PLATTE BEAVER D	1909-05-29	21698.00000	510.0000 CFS	1, 2, 3, 4, 5, 6, 7, 8, 9, 23,	BYPASS CALL FROM 0200817 - EVANS NO 2 DITCH
2012-04-15 08:00	2012-04-16 08:00	SOUTH PLATTE RIVER	100829	PREWITT INLET CANAL	1929-12-31	31423.29219	695.0000 CFS	1, 2, 3, 4, 5, 6, 7, 8, 9, 23,	
2012-04-16 08:00	2012-04-17 08:00	SOUTH PLATTE RIVER	200802	BURLINGTON D RIVER HG	1909-01-13	21562.00000	900.0000 CFS	2, 8, 9, 23, 80	
2012-04-16 08:00	2012-04-17 08:00	SOUTH PLATTE RIVER	200825	HEWES COOK DITCH	1909-05-29	21698.00000	510.0000 CFS	2, 7	BYPASS CALL FROM 0200817 - EVANS NO 2 DITCH
2012-04-16 08:00	2012-04-17 08:00	SOUTH PLATTE RIVER	100687	NORTH STERLING CANAL	1929-12-31	31423.29219	1000.000 0 CFS	1, 2, 3, 4, 5, 6,	BYPASS CALL FROM 0100503 - RIVERSIDE CANAL
2012-04-17 08:00	2012-04-21 08:00	SOUTH PLATTE RIVER	6400528	STERLING IRR CO DITCH 1	1915-08-01	26302.23953	411.0000 CFS	1, 2, 3, 4, 5, 6, 64	BYPASS CALL FROM 0100687 - NORTH STERLING CANAL
2012-04-17 08:00	2012-04-18 16:00	SOUTH PLATTE RIVER	200825	HEWES COOK DITCH	1909-01-13	21562.00000	900.0000 CFS	2, 7, 8, 9, 23, 80	BYPASS CALL FROM 0200802 - BURLINGTON D RIVER HG
2012-04-18 16:00	2012-04-24 08:00	SOUTH PLATTE RIVER	200825	HEWES COOK DITCH	1885-11-20	13108.00000	350.0000 CFS	2, 7, 8, 9, 23, 80	BYPASS CALL FROM 0200802 - BURLINGTON D RIVER HG
2012-04-21 08:00	2012-04-22 08:00	SOUTH PLATTE RIVER	100515	UPPER PLATTE BEAVER CNL	1888-10-01	14154.00000	450.0000 CFS	1, 2, 3, 4, 5, 6	BYPASS CALL FROM 0100507 - BIJOU CANAL
2012-04-21 08:00	2012-04-22 08:00	SOUTH PLATTE RIVER	6400528	STERLING IRR CO DITCH 1	1915-08-01	26302.23953	411.000 0 CFS	1, 64	BYPASS CALL FROM 0100687 - NORTH STERLING CANAL
2012-04-22 08:00	2012-04-24 08:00	SOUTH PLATTE RIVER	6400528	STERLING IRR CO DITCH 1	1888-10-01	14154.00000	450.000 0 CFS	1, 2, 3, 4, 5, 6, 64	BYPASS CALL FROM 0100507 - BIJOU CANAL
2012-04-24 08:00	2012-04-25 08:00	SOUTH PLATTE RIVER	200825	HEWES COOK DITCH	1878-09-10	10480.00000	13.2200 CFS	2, 7, 8, 9, 23, 80	BYPASS CALL FROM 0801002 - DENVER CONDUIT NO 20

CALLING PRIORITY 2011-2012 (continued)

Start Date	End Date	Water Source	WDID	Structure Name	Appro Date	Admin No	Decreed Amt	Districts Affected	Set Comments
2012-04-24 08:00	2012-04-27 12:00	SOUTH PLATTE RIVER	6400528	STERLING IRR CO DITCH 1	1888-04-15	13985.00000	164.0000 CFS	1, 2, 3, 4, 5, 6, 64	BYPASS CALL FROM 0100515 - UPPER PLATTE BEAVER CNL
2012-04-24 08:00	2012-04-25 08:00	SOUTH PLATTE RIVER	6400511	HARMONY DITCH 1	1904-02-12	19765.00000	450.0000 CFS	64	
2012-04-25 08:00	2012-04-27 08:00	SOUTH PLATTE RIVER	200825	HEWES COOK DITCH	1871-10-05	7948.00000	177.0700 CFS	2, 7, 8, 9, 23, 80	BYPASS CALL FROM 0200817 - EVANS NO 2 DITCH
2012-04-25 08:00	2012-04-27 12:00	SOUTH PLATTE RIVER	6400511	HARMONY DITCH 1	1895-04-28	16554.00000	252.0000 CFS	64	
2012-04-27 08:00	2012-04-28 08:00	SOUTH PLATTE RIVER	200825	HEWES COOK DITCH	1885-11-20	13108.00000	350.0000 CFS	2, 7, 8, 9, 23, 80	BYPASS CALL FROM 0200802 - BURLINGTON D RIVER HG
2012-04-27 12:00	2012-04-30 08:00	SOUTH PLATTE RIVER	6400511	HARMONY DITCH 1	1907-05-31	20969.00000	417.0000 CFS	1,2, 3, 4, 5, 6, 64	BYPASS CALL FROM 0100503 - RIVERSIDE CANAL
2012-04-28 08:00	2012-04-30 08:00	SOUTH PLATTE RIVER	200825	HEWES COOK DITCH	1871-10-05	7948.00000	177.0700 CFS	2, 7, 8, 9, 23, 80	BYPASS CALL FROM 0200817 - EVANS NO 2 DITCH
2012-04-30 08:00	2012-05-01 08:00	SOUTH PLATTE RIVER	200825	HEWES COOK DITCH	1880-06-30	11139.00000	10.0000 CFS	2, 7, 8, 9, 23, 80	BYPASS CALL FROM 0801002 - DENVER CONDUIT NO 20
2012-04-30 08:00	2012-05-01 12:00	SOUTH PLATTE RIVER	100829	PREWITT INLET CANAL	1929-12-31	31423.29219	695.0000 CFS	1, 2, 3, 4, 5, 6, 64	
2012-05-01 08:00	2012-05-04 08:00	SOUTH PLATTE RIVER	200825	HEWES COOK DITCH	1871-10-05	7948.00000	177.0700 CFS	2,7,8,9,23, 80	BYPASS CALL FROM 0200817 - EVANS NO 2 DITCH
2012-05-01 08:00	2012-05-01 12:00	SOUTH PLATTE RIVER	100507	BIJOU CANAL	1888-10-01	14154.00000	450.0000 CFS	1, 2, 3, 4, 5, 6	
2012-05-01 12:00	2012-05-03 08:00	SOUTH PLATTE RIVER	100515	UPPER PLATTE BEAVER CNL	1888-10-01	14154.00000	450.0000 CFS	1, 2, 3, 4, 5, 6	BYPASS CALL FROM 0100507 - BIJOU CANAL
2012-05-01 12:00	2012-05-02 08:00	SOUTH PLATTE RIVER	6400511	HARMONY DITCH 1	1929-12-31	31423.29219	695.0000 CFS	1, 64	BYPASS CALL FROM 0100829 - PREWITT INLET CANAL

CALLING PRIORITY 2011-2012 (Continued)

Start Date	End Date	Water Source	WDID	Structure Name	Appro Date	Admin No	Decreed Amt	Districts Affected	Set Comments
2012-05-01 12:00	2012-05-02 08:00	SOUTH PLATTE RIVER	6499999	SOUTH PLATTE RIVER COMPACT	1897-06-14	17332.00000	120.0000 CFS	64	
2012-05-02 08:00	2012-05-03 08:00	SOUTH PLATTE RIVER	6400511	HARMONY DITCH 1	1895-04-28	16554.00000	252.0000 CFS	1, 64	
2012-05-03 08:00	2012-05-07 12:00	SOUTH PLATTE RIVER	200834	LOWER LATHAM DITCH	1877-11-14	10180.00000	97.6800 CFS	2, 4, 5, 6	
2012-05-03 08:00	2012-05-04 08:00	SOUTH PLATTE RIVER	100515	UPPER PLATTE BEAVER CNL	1888-10-01	14154.00000	450.0000 CFS	1, 2, 3	BYPASS CALL FROM 0100507 - BIJOU CANAL
2012-05-03 08:00	2012-05-09 12:00	SOUTH PLATTE RIVER	6400511	HARMONY DITCH 1	1895-07-11	16628.00000	16.0000 CFS	1, 64	BYPASS CALL FROM 6400522 - BRAVO DITCH
2012-05-04 08:00	2012-05-07 12:00	SOUTH PLATTE RIVER	100515	UPPER PLATTE BEAVER CNL	1888-04-15	13985.00000	164.0000 CFS	1, 2, 3	
2012-05-04 08:00	2012-05-06 08:00	SOUTH PLATTE RIVER	200825	HEWES COOK DITCH	1871-08-10	7892.00000	69.8770 CFS	2, 7, 8, 9, 23, 80	
2012-05-06 08:00	2012-05-07 08:00	SOUTH PLATTE RIVER	200825	HEWES COOK DITCH	1871-10-05	7948.00000	177.0700 CFS	2, 7, 8, 9, 23, 80	BYPASS CALL FROM 0200817 - EVANS NO 2 DITCH
2012-05-07 08:00	2012-05-07 12:00	SOUTH PLATTE RIVER	200825	HEWES COOK DITCH	1885-11-20	13108.00000	350.0000 CFS	2, 7, 8, 9, 23, 80	BYPASS CALL FROM 0200802 - BURLINGTON D RIVER HG
2012-05-07 12:00	2012-05-08 08:00	SOUTH PLATTE RIVER	100515	UPPER PLATTE BEAVER CNL	1888-04-15	13985.00000	164.0000 CFS	1, 2, 3, 4, 5, 6, 7, 8, 9, 23,	
2012-05-08 08:00	2012-05-09 08:00	SOUTH PLATTE RIVER	200825	HEWES COOK DITCH	1885-11-20	13108.00000	350.0000 CFS	2, 7, 8, 9, 23, 80	BYPASS CALL FROM 0200802 - BURLINGTON D RIVER HG
2012-05-08 08:00	2012-05-09 12:00	SOUTH PLATTE RIVER	6400528	STERLING IRR CO DITCH 1	1888-04-15	13985.00000	164.0000 CFS	1, 2, 3, 4, 5, 6	BYPASS CALL FROM 0100515 - UPPER PLATTE BEAVER CNL
2012-05-08 16:00	2012-05-09 08:00	SOUTH PLATTE RIVER	6499999	SOUTH PLATTE RIVER COMPACT	1897-06-14	17332.00000	120.0000 CFS	64	



CALLING PRIORITY 2011-2012 (Continued)

Start Date	End Date	Water Source	WDID	Structure Name	Appro Date	Admin No	Decreed Amt	Districts Affected	Set Comments
2012-05-09 08:00	2012-05-11 08:00	SOUTH PLATTE RIVER	200825	HEWES COOK DITCH	1872-07-01	8218.00000	12.1800 CFS	2, 7, 8, 9, 23, 80	BYPASS CALL FROM 0200809 - BRANTNER DITCH
2012-05-09 12:00	2012-05-11 08:00	SOUTH PLATTE RIVER	6400528	STERLING IRR CO DITCH 1	1907-05-31	20969.00000	417.0000 CFS	1, 2, 3, 4, 5, 6	BYPASS CALL FROM 0100503 - RIVERSIDE CANAL
2012-05-11 08:00	2012-05-11 12:00	SOUTH PLATTE RIVER	200825	HEWES COOK DITCH	1873-10-15	8689.00000	94.2500 CFS	2, 7, 8, 9, 23, 80	BYPASS CALL FROM 0200813 - PLATTEVILLE DITCH
2012-05-11 08:00	2012-05-12 12:00	SOUTH PLATTE RIVER	6400528	STERLING IRR CO DITCH 1	1888-04-15	13985.00000	164.0000 CFS	1, 2, 3, 4, 5, 6, 64	BYPASS CALL FROM 0100515 - UPPER PLATTE BEAVER CNL
2012-05-11 12:00	2012-05-14 08:00	SOUTH PLATTE RIVER	801002	DENVER CONDUIT NO 20	1870-12-20	7659.00000	3.0000 CFS	8,23,80	
2012-05-11 12:00	2012-05-12 12:00	SOUTH PLATTE RIVER	200825	HEWES COOK DITCH	1873-10-15	8689.00000	94.2500 CFS	2,7,8,9	BYPASS CALL FROM 0200813 - PLATTEVILLE DITCH
2012-05-12 12:00	2012-05-14 08:00	SOUTH PLATTE RIVER	6400528	STERLING IRR CO DITCH 1	1888-04-15	13985.00000	164.0000 CFS	1, 2, 3, 4, 5, 6, 7, 8, 9, 64	BYPASS CALL FROM 0100515 - UPPER PLATTE BEAVER CNL
2012-05-14 08:00	2012-05-15 08:00	SOUTH PLATTE RIVER	200825	HEWES COOK DITCH	1885-11-20	13108.00000	350.0000 CFS	2, 7, 8, 9, 23, 80	BYPASS CALL FROM 0200802 - BURLINGTON D RIVER HG
2012-05-14 08:00	2012-05-19 08:00	SOUTH PLATTE RIVER	6400528	STERLING IRR CO DITCH 1	1888-04-15	13985.00000	164.0000 CFS	1, 2, 3, 4, 5, 6, 64	BYPASS CALL FROM 0100515 - UPPER PLATTE BEAVER CNL
2012-05-14 16:00	2012-05-25 08:00	SOUTH PLATTE RIVER	6400511	HARMONY DITCH 1	1895-07-11	16628.00000	16.0000 CFS	64	BYPASS CALL FROM 6400522 - BRAVO DITCH
2012-05-15 08:00	2012-05-18 08:00	SOUTH PLATTE RIVER	200825	HEWES COOK DITCH	1876-11-20	9821.00000	85.4000 CFS	2, 7, 8, 9, 23, 80	BYPASS CALL FROM 0200824 - FARMERS INDEPENDENT D
2012-05-16 08:00	2012-10-08 08:00	SOUTH PLATTE RIVER	6499999	SOUTH PLATTE RIVER COMPACT	1897-06-14	17332.00000	120.0000 CFS	64	

CALLING PRIORITY 2011-2012 (Continued)

Start Date	End Date	Water Source	WDID	Structure Name	Appro Date	Admin No	Decreed Amt	Districts Affected	Set Comments
2012-05-18 08:00	2012-05-19 08:00	SOUTH PLATTE RIVER	200825	HEWES COOK DITCH	1873-10-15	8689.00000	94.2500 CFS	2, 7, 8, 9, 23, 80	BYPASS CALL FROM 0200813 - PLATTEVILLE DITCH
2012-05-19 08:00	2012-05-20 08:00	SOUTH PLATTE RIVER	200825	HEWES COOK DITCH	1871-10-05	7948.00000	177.0700 CFS	2, 7, 8, 9, 23, 80	BYPASS CALL FROM 0200817 - EVANS NO 2 DITCH
2012-05-19 08:00	2012-05-20 08:00	SOUTH PLATTE RIVER	200834	LOWER LATHAM DITCH	1877-11-14	10180.00000	97.6800 CFS	2, 4, 5, 6	
2012-05-19 08:00	2012-05-21 08:00	SOUTH PLATTE RIVER	6400528	STERLING IRR CO DITCH 1	1886-07-19	13349.00000	62.2750 CFS	1, 2, 3, 64	BYPASS CALL FROM 6400530 - SPRINGDALE DITCH
2012-05-20 08:00	2012-05-21 08:00	SOUTH PLATTE RIVER	200834	LOWER LATHAM DITCH	1885-11-20	13108.00000	350.0000 CFS	2, 4, 5, 6, 7, 8, 9, 23, 80	BYPASS CALL FROM 0200802 - BURLINGTON D RIVER HG
2012-05-21 08:00	2012-05-22 08:00	SOUTH PLATTE RIVER	200825	HEWES COOK DITCH	1876-11-20	9821.00000	85.4000 CFS	2, 7, 8, 9, 23, 80	BYPASS CALL FROM 0200824 - FARMERS INDEPENDENT D
2012-05-21 08:00	2012-05-22 08:00	SOUTH PLATTE RIVER	6400528	STERLING IRR CO DITCH 1	1886-07-19	13349.00000	62.2750 CFS	1, 2, 3, 4, 5, 6, 64	BYPASS CALL FROM 6400530 - SPRINGDALE DITCH
2012-05-22 08:00	2012-05-23 08:00	SOUTH PLATTE RIVER	200825	HEWES COOK DITCH	1873-10-15	8689.00000	94.2500 CFS	2, 7, 8, 9, 23, 80	BYPASS CALL FROM 0200813 - PLATTEVILLE DITCH
2012-05-22 08:00	2012-05-23 08:00	SOUTH PLATTE RIVER	6400528	STERLING IRR CO DITCH 1	1888-04-15	13985.00000	284.0000 CFS	1, 2, 3, 4, 5, 6, 64	BYPASS CALL FROM 0100518 - LOWER PLATTE BEAVER D
2012-05-23 08:00	2012-05-25 08:00	SOUTH PLATTE RIVER	200834	LOWER LATHAM DITCH	1885-11-20	13108.00000	350.0000 CFS	2, 4, 5, 6, 7, 8, 9, 23, 80	BYPASS CALL FROM 0200802 - BURLINGTON D RIVER HG
2012-05-23 08:00	2012-05-25 08:00	SOUTH PLATTE RIVER	6400528	STERLING IRR CO DITCH 1	1888-04-15	13985.00000	284.0000 CFS	1, 2, 3, 64	BYPASS CALL FROM 0100518 - LOWER PLATTE BEAVER D

CALLING PRIORITY 2011-2012 (Continued)

Start Date	End Date	Water Source	WDID	Structure Name	Appro Date	Admin No	Decreed Amt	Districts Affected	Set Comments
2012-05-25 08:00	2012-05-28 08:00	SOUTH PLATTE RIVER	200825	HEWES COOK DITCH	1885-11-20	13108.00000	350.0000 CFS	2, 7, 8, 9, 23, 80	BYPASS CALL FROM 0200802 - BURLINGTON D RIVER HG
2012-05-25 08:00	2012-05-30 08:00	SOUTH PLATTE RIVER	6400528	STERLING IRR CO DITCH 1	1915-08-01	26302.23953	411.0000 CFS	1, 2, 3, 4, 5, 6, 64	BYPASS CALL FROM 0100687 - NORTH STERLING CANAL
2012-05-28 08:00	2012-05-29 08:00	SOUTH PLATTE RIVER	200825	HEWES COOK DITCH	1872-07-01	8218.00000	12.1800 CFS	2, 7, 8, 9, 23, 80	BYPASS CALL FROM 0200809 - BRANTNER DITCH
2012-05-29 08:00	2012-06-07 08:00	SOUTH PLATTE RIVER	200825	HEWES COOK DITCH	1871-10-05	7948.00000	177.0700 CFS	2, 7, 8, 9, 23, 80	BYPASS CALL FROM 0200817 - EVANS NO 2 DITCH
2012-05-30 08:00	2012-05-31 08:00	SOUTH PLATTE RIVER	6400511	HARMONY DITCH 1	1895-04-28	16554.00000	252.0000 CFS	1, 2, 3, 4, 5, 6, 64	
2012-05-31 08:00	2012-06-01 08:00	SOUTH PLATTE RIVER	6400528	STERLING IRR CO DITCH 1	1888-04-15	13985.00000	284.0000 CFS	1, 2, 3, 4, 5, 6, 64	BYPASS CALL FROM 0100518 - LOWER PLATTE BEAVER D
2012-05-31 08:00	2012-06-05 08:00	SOUTH PLATTE RIVER	6400511	HARMONY DITCH 1	1895-04-28	16554.00000	252.0000 CFS	64	
2012-06-01 08:00	2012-06-05 08:00	SOUTH PLATTE RIVER	200834	LOWER LATHAM DITCH	1877-11-14	10180.00000	97.6800 CFS	2, 4, 5, 6	
2012-06-01 08:00	2012-06-05 08:00	SOUTH PLATTE RIVER	6400528	STERLING IRR CO DITCH 1	1888-04-15	13985.00000	284.0000 CFS	1, 2, 3, 64	BYPASS CALL FROM 0100518 - LOWER PLATTE BEAVER D
2012-06-05 08:00	2012-06-06 08:00	SOUTH PLATTE RIVER	6400528	STERLING IRR CO DITCH 1	1882-10-18	11979.00000	323.0000 CFS	1,2,3,4,5,6,64	BYPASS CALL FROM 0100514 - FT MORGAN CANAL
2012-06-05 08:00	2012-06-05 12:00	SOUTH PLATTE RIVER	6400511	HARMONY DITCH 1	1895-07-11	16628.00000	16.0000 CFS	64	BYPASS CALL FROM 6400522 - BRAVO DITCH
2012-06-05 12:00	2012-06-06 08:00	SOUTH PLATTE RIVER	6400520	ILIFF PLATTE VALLEY D	1883-10-01	12327.00000	150.0000 CFS	64	



CALLING PRIORITY 2011-2012 (Continued)

Start Date	End Date	Water Source	WDID	Structure Name	Appro Date	Admin No	Decreed Amt	Districts Affected	Set Comments
2012-06-05 12:00	2012-06-08 16:00	SOUTH PLATTE RIVER	6400511	HARMONY DITCH 1	1895-04-28	16554.00000	252.0000 CFS	64	
2012-06-06 08:00	2012-06-07 08:00	SOUTH PLATTE RIVER	6400528	STERLING IRR CO DITCH 1	1882-10-18	11979.00000	323.0000 CFS	1, 2, 3, 64	BYPASS CALL FROM 0100514 - FT MORGAN CANAL
2012-06-06 08:00	2012-06-07 08:00	SOUTH PLATTE RIVER	200834	LOWER LATHAM DITCH	1877-11-14	10180.00000	97.6800 CFS	2, 4, 5, 6	
2012-06-06 08:00	2012-06-08 16:00	SOUTH PLATTE RIVER	6400520	ILIFF PLATTE VALLEY D	1893-02-21	15758.00000	40.0000 CFS	64	BYPASS CALL FROM 6400522 - BRAVO DITCH
2012-06-07 08:00	2012-06-08 08:00	SOUTH PLATTE RIVER	6400528	STERLING IRR CO DITCH 1	1885-11-20	13108.00000	350.0000 CFS	1, 2, 3, 4, 5, 6, 7, 8, 9, 23,	BYPASS CALL FROM 0200802 - BURLINGTON D RIVER HG
2012-06-08 08:00	2012-06-08 16:00	SOUTH PLATTE RIVER	6400528	STERLING IRR CO DITCH 1	1888-04-15	13985.00000	284.0000 CFS	1, 2, 3, 4, 5, 6, 7, 8, 9, 23,	BYPASS CALL FROM 0100518 - LOWER PLATTE BEAVER D
2012-06-08 16:00	2012-06-09 16:00	SOUTH PLATTE RIVER	200834	LOWER LATHAM DITCH	1885-11-20	13108.00000	350.0000 CFS	1, 2, 4, 5, 6, 7, 8, 9, 23, 80	BYPASS CALL FROM 0200802 - BURLINGTON D RIVER HG
2012-06-08 16:00	2012-06-09 08:00	SOUTH PLATTE RIVER	6400511	HARMONY DITCH 1	1929-12-31	31423.29219	1000.000 0 CFS	1, 2, 3, 64	BYPASS CALL FROM 0100503 - RIVERSIDE CANAL
2012-06-09 08:00	2012-06-09 16:00	SOUTH PLATTE RIVER	6400511	HARMONY DITCH 1	1895-04-28	16554.00000	252.0000 CFS	1, 2, 3, 64	
2012-06-09 16:00	2012-06-12 08:00	SOUTH PLATTE RIVER	200825	HEWES COOK DITCH	1881-01-15	11338.00000	63.3000 CFS	2, 7, 8, 9 23, 80	BYPASS CALL FROM 0200809 - BRANTNER DITCH
2012-06-09 16:00	2012-06-12 08:00	SOUTH PLATTE RIVER	6400511	HARMONY DITCH 1	1902-01-17	19009.00000	175.0000 CFS	1, 2, 3, 4, 5, 6, 64	BYPASS CALL FROM 0100519 - TREMONT DITCH
2012-06-12 08:00	2012-06-15 08:00	SOUTH PLATTE RIVER	200825	HEWES COOK DITCH	1871-10-05	7948.00000	177.0700 CFS	2, 7, 8, 9, 23, 80	BYPASS CALL FROM 0200817 - EVANS NO 2 DITCH
2012-06-12 08:00	2012-06-13 08:00	SOUTH PLATTE RIVER	6400528	STERLING IRR CO DITCH 1	1888-04-15	13985.00000	284.0000 CFS	1, 2, 3, 4, 5, 6,	BYPASS CALL FROM 0100518 - LOWER PLATTE BEAVER D

CALLING PRIORITY 2011-2012 (Continued)

Start Date	End Date	Water Source	WDID	Structure Name	Appro Date	Admin No	Decreed Amt	Districts Affected	Set Comments
2012-06-12 08:00	2012-06-30 08:00	SOUTH PLATTE RIVER	6400511	HARMONY DITCH 1	1895-04-28	16554.00000	252.0000 CFS	64	
2012-06-13 08:00	2012-06-15 08:00	SOUTH PLATTE RIVER	6400528	STERLING IRR CO DITCH 1	1882-10-18	11979.00000	323.0000 CFS	1, 2, 3, 4, 5, 6	BYPASS CALL FROM 0100514 - FT MORGAN CANAL
2012-06-15 08:00	2012-06-16 12:00	SOUTH PLATTE RIVER	801002	DENVER CONDUIT NO 20	1864-12-30	5478.00000	17.3000 CFS	23, 80	
2012-06-15 08:00	2012-06-21 08:00	SOUTH PLATTE RIVER	200834	LOWER LATHAM DITCH	1877-11-14	10180.00000	97.6800 CFS	2, 4, 5, 6	
2012-06-15 08:00	2012-06-16 16:00	SOUTH PLATTE RIVER	6400528	STERLING IRR CO DITCH 1	1882-10-18	11979.00000	323.0000 CFS	1, 2, 3, 64	BYPASS CALL FROM 0100514 - FT MORGAN CANAL
2012-06-15 08:00	2012-06-16 12:00	SOUTH PLATTE RIVER	200825	HEWES COOK DITCH	1871-10-05	7948.00000	177.0700 CFS	2, 7, 8, 9	BYPASS CALL FROM 0200817 - EVANS NO 2 DITCH
2012-06-16 08:00	2012-06-25 08:00	SOUTH PLATTE RIVER	6500506	HAIGLER LAND CATTLE CO D	1890-04-04	14704.00000	50.0000 CFS	65	PIONEER DITCH WDID 6500520
2012-06-16 12:00	2012-06-19 08:00	SOUTH PLATTE RIVER	200825	HEWES COOK DITCH	1871-10-05	7948.00000	177.0700 CFS	2, 7, 8, 9, 23, 80	BYPASS CALL FROM 0200817 - EVANS NO 2 DITCH
2012-06-16 16:00	2012-07-08 08:00	SOUTH PLATTE RIVER	6400528	STERLING IRR CO DITCH 1	1882-06-22	11861.00000	126.0000 CFS	1, 2, 3	BYPASS CALL FROM 6400533 - PAWNEE DITCH
2012-06-19 08:00	2012-06-22 08:00	SOUTH PLATTE RIVER	200825	HEWES COOK DITCH	1871-08-10	7892.00000	69.8770 CFS	2, 7, 8, 9, 23, 80	
2012-06-21 08:00	2012-07-07 08:00	SOUTH PLATTE RIVER	200830	SECTION NO 3 DITCH	1874-11-05	9075.00000	100.0000 CFS	2, 5, 6	BYPASS CALL FROM 0200828 - UNION DITCH
2012-06-21 08:00	2012-07-07 08:00	SOUTH PLATTE RIVER	200834	LOWER LATHAM DITCH	1877-11-14	10180.00000	97.6800 CFS	2, 4	
2012-06-22 08:00	2012-06-23 08:00	SOUTH PLATTE RIVER	200825	HEWES COOK DITCH	1871-03-10	7739.00000	10.0000 CFS	2, 7, 8, 9, 23, 80	BYPASS CALL FROM 0200812 - LUPTON BOTTOM DITCH
2012-06-23 08:00	2012-06-25 08:00	SOUTH PLATTE RIVER	200825	HEWES COOK DITCH	1866-05-05	5969.00000	26.8930 CFS	2, 7, 8, 9, 23, 80	

CALLING PRIORITY 2011-2012 (Continued)

Start Date	End Date	Water Source	WDID	Structure Name	Appro Date	Admin No	Decreed Amt	Districts Affected	Set Comments
2012-06-25 06:58	2012-07-07 08:00	SOUTH PLATTE RIVER	200825	HEWES COOK DITCH	1866-05-05	5969.00000	26.8930 CFS	2	
2012-06-25 08:00	2012-07-07 08:00	SOUTH PLATTE RIVER	200824	FARMERS INDEPENDEN T D	1866-05-03	5967.00000	57.8300 CFS	2, 7, 8, 9, 23, 80	BYPASS CALL FROM 0200822 - MEADOW ISLAND DITCH
2012-06-27 16:00	2012-07-08 08:00	SOUTH PLATTE RIVER	6400503	SOUTH RESERVATIO N DITCH	1895-03-01	17846.16496	164.0000 CFS	64	BYPASS CALL FROM 6400504 - PETERSON DITCH
2012-06-29 08:00	2012-07-18 08:00	SOUTH PLATTE RIVER	6500506	HAIGLER LAND CATTLE CO D	1890-04-04	14704.00000	50.0000 CFS	65	PIONEER DITCH WDID 6500520
2012-06-30 08:00	2012-07-08 08:00	SOUTH PLATTE RIVER	6400511	HARMONY DITCH 1	1897-05-03	17290.00000	50.0000 CFS	64	BYPASS CALL FROM 6400515 - HARMONY DITCH 2
2012-07-07 08:00	2012-07-08 08:00	SOUTH PLATTE RIVER	200834	LOWER LATHAM DITCH	1877-11-14	10180.00000	97.6800 CFS	2, 4, 5, 6, 7, 8, 9, 23, 80	
2012-07-08 08:00	2012-07-09 08:00	SOUTH PLATTE RIVER	6400528	STERLING IRR CO DITCH 1	1888-04-15	13985.00000	164.0000 CFS	1, 2, 3, 4, 5, 6, 7, 8, 9, 23,	BYPASS CALL FROM 0100515 - UPPER PLATTE BEAVER CNL
2012-07-09 08:00	2012-07-09 12:00	SOUTH PLATTE RIVER	200825	HEWES COOK DITCH	1885-11-20	13108.00000	350.0000 CFS	2, 7, 8, 9, 23, 80	BYPASS CALL FROM 0200802 - BURLINGTON D RIVER HG
2012-07-09 08:00	2012-07-09 12:00	SOUTH PLATTE RIVER	6400511	HARMONY DITCH 1	1929-12-31	31423.29219	695.0000 CFS	1, 2, 3, 4, 5, 6, 64	BYPASS CALL FROM 0100829 - PREWITT INLET CANAL
2012-07-09 12:00	2012-07-10 08:00	SOUTH PLATTE RIVER	6400511	HARMONY DITCH 1	1929-12-31	31423.29219	695.0000 CFS	1, 2, 3, 4, 5, 6, 7, 8, 9, 23,	BYPASS CALL FROM 0100829 - PREWITT INLET CANAL
2012-07-10 08:00	2012-07-11 08:00	SOUTH PLATTE RIVER	200825	HEWES COOK DITCH	1885-11-20	13108.00000	350.0000 CFS	2, 7, 8, 9, 23, 80	BYPASS CALL FROM 0200802 - BURLINGTON D RIVER HG
2012-07-10 08:00	2012-07-11 08:00	SOUTH PLATTE RIVER	6400511	HARMONY DITCH 1	1929-12-31	31423.29219	695.0000 CFS	1, 2, 3, 4, 5, 6, 64	BYPASS CALL FROM 0100829 - PREWITT INLET CANAL



CALLING PRIORITY 2011-2012 (Continued)

Start Date	End Date	Water Source	WDID	Structure Name	Appro Date	Admin No	Decreed Amt	Districts Affected	Set Comments
2012-07-11 08:00	2012-07-12 08:00	SOUTH PLATTE RIVER	200825	HEWES COOK DITCH	1876-07-08	9686.00000	74.2500 CFS	2, 7, 8, 9, 23, 80	BYPASS CALL FROM 0200808 - FULTON DITCH
2012-07-11 08:00	2012-07-12 08:00	SOUTH PLATTE RIVER	6400511	HARMONY DITCH 1	1915-08-01	26302.23953	411.0000 CFS	1, 2, 3, 4, 5, 6	BYPASS CALL FROM 0100687 - NORTH STERLING CANAL
2012-07-12 08:00	2012-07-12 12:00	SOUTH PLATTE RIVER	200825	HEWES COOK DITCH	1873-09-15	8659.00000	92.8700 CFS	2, 7, 8, 9, 23, 80	BYPASS CALL FROM 0200812 - LUPTON BOTTOM DITCH
2012-07-12 08:00	2012-07-13 08:00	SOUTH PLATTE RIVER	6400528	STERLING IRR CO DITCH 1	1888-04-15	13985.00000	284.0000 CFS	1, 2, 3, 4, 5, 6	BYPASS CALL FROM 0100518 - LOWER PLATTE BEAVER D
2012-07-12 08:00	2012-09-13 16:00	SOUTH PLATTE RIVER	6400511	HARMONY DITCH 1	1897-05-03	17290.00000	50.0000 CFS	64	BYPASS CALL FROM 6400515 - HARMONY DITCH 2
2012-07-12 12:00	2012-07-20 08:00	SOUTH PLATTE RIVER	200825	HEWES COOK DITCH	1871-10-05	7948.00000	177.0700 CFS	2, 7, 8, 9, 23, 80	BYPASS CALL FROM 0200817 - EVANS NO 2 DITCH
2012-07-13 08:00	2012-07-14 08:00	SOUTH PLATTE RIVER	6400528	STERLING IRR CO DITCH 1	1882-10-18	11979.00000	323.0000 CFS	1, 2, 3, 4, 5, 6	BYPASS CALL FROM 0100514 - FT MORGAN CANAL
2012-07-14 08:00	2012-07-20 08:00	SOUTH PLATTE RIVER	6400528	STERLING IRR CO DITCH 1	1882-06-22	11861.00000	126.0000 CFS	1, 2, 3, 4, 5, 6, 64	BYPASS CALL FROM 6400533 - PAWNEE DITCH
2012-07-20 08:00	2012-07-24 08:00	SOUTH PLATTE RIVER	200825	HEWES COOK DITCH	1871-08-10	7892.00000	69.8770 CFS	2, 7, 8, 9, 23, 80	
2012-07-20 08:00	2012-07-23 08:00	SOUTH PLATTE RIVER	200834	LOWER LATHAM DITCH	1877-11-14	10180.00000	97.6800 CFS	2, 4, 5, 6	
2012-07-20 08:00	2012-07-31 12:00	SOUTH PLATTE RIVER	6400528	STERLING IRR CO DITCH 1	1882-06-22	11861.00000	126.0000 CFS	1, 2, 3, 64	BYPASS CALL FROM 6400533 - PAWNEE DITCH
2012-07-20 08:00	2012-09-17 08:00	SOUTH PLATTE RIVER	6400503	SOUTH RESERVATIO N DITCH	1895-03-01	17846.16496	164.0000 CFS	64	BYPASS CALL FROM 6400504 - PETERSON DITCH
2012-07-21 08:00	2012-09-21 08:00	SOUTH PLATTE RIVER	6500506	HAIGLER LAND CATTLE CO D	1890-04-04	14704.00000	50.0000 CFS	65	PIONEER DITCH WDID 6500520



CALLING PRIORITY 2011-2012 (Continued)

Start Date	End Date	Water Source	WDID	Structure Name	Appro Date	Admin No	Decreed Amt	Districts Affected	Set Comments
2012-07-23 08:00	2012-08-01 08:00	SOUTH PLATTE RIVER	200830	SECTION NO 3 DITCH	1874-11-05	9075.00000	100.0000 CFS	2, 5, 6	BYPASS CALL FROM 0200828 - UNION DITCH
2012-07-23 08:00	2012-08-01 08:00	SOUTH PLATTE RIVER	200834	LOWER LATHAM DITCH	1877-11-14	10180.00000	97.6800 CFS	2, 4	
2012-07-24 08:00	2012-07-26 08:00	SOUTH PLATTE RIVER	200825	HEWES COOK DITCH	1871-01-01	7671.00000	5.0178 CFS	2, 7, 8, 9, 23, 80	BYPASS CALL FROM 0200813 - PLATTEVILLE DITCH
2012-07-26 08:00	2012-07-26 16:00	SOUTH PLATTE RIVER	200825	HEWES COOK DITCH	1866-05-05	5969.00000	26.8930 CFS	2, 7, 8, 9, 23, 80	
2012-07-26 13:54	2012-07-28 08:00	SOUTH PLATTE RIVER	200824	FARMERS INDEPENDENT D	1866-05-03	5967.00000	57.8300 CFS	2, 7, 8, 9, 23, 80	BYPASS CALL FROM 0200822 - MEADOW ISLAND DITCH
2012-07-26 16:00	2012-07-28 08:00	SOUTH PLATTE RIVER	200825	HEWES COOK DITCH	1866-05-05	5969.00000	26.8930 CFS	2	
2012-07-28 08:00	2012-07-30 08:00	SOUTH PLATTE RIVER	200825	HEWES COOK DITCH	1871-08-10	7892.00000	69.8770 CFS	2, 7, 8, 9, 23, 80	
2012-07-30 08:00	2012-07-31 08:00	SOUTH PLATTE RIVER	200825	HEWES COOK DITCH	1871-01-01	7671.00000	5.0178 CFS	2, 7, 8, 9, 23, 80	BYPASS CALL FROM 0200813 - PLATTEVILLE DITCH
2012-07-31 07:22	2012-08-01 08:00	SOUTH PLATTE RIVER	200825	HEWES COOK DITCH	1871-08-10	7892.00000	69.8770 CFS	2, 7, 8, 9, 23, 80	
2012-07-31 12:00	2012-07-31 16:00	SOUTH PLATTE RIVER	6400528	STERLING IRR CO DITCH 1	1882-09-04	11935.00000	38.0000 CFS	1,2, 3, 64	BYPASS CALL FROM 0100518 - LOWER PLATTE BEAVER D
2012-07-31 16:00	2012-08-01 08:00	SOUTH PLATTE RIVER	6400528	STERLING IRR CO DITCH 1	1886-07-19	13349.00000	62.2750 CFS	1, 2, 3, 64	BYPASS CALL FROM 6400530 - SPRINGDALE DITCH
2012-08-01 08:00	2012-08-07 08:00	SOUTH PLATTE RIVER	200825	HEWES COOK DITCH	1871-10-05	7948.00000	6050.0000 AF	2, 7, 8, 9, 23, 80	BYPASS CALL FROM 0200817 - EVANS NO 2 DITCH

CALLING PRIORITY 2011-2012 (Continued)

Start Date	End Date	Water Source	WDID	Structure Name	Appro Date	Admin No	Decreed Amt	Districts Affected	Set Comments
2012-08-01 08:00	2012-08-02 08:00	SOUTH PLATTE RIVER	6400528	STERLING IRR CO DITCH 1	1886-07-19	13349.00000	62.2750 CFS	1, 2, 3, 4, 5, 6, 64	BYPASS CALL FROM 6400530 - SPRINGDALE DITCH
2012-08-02 08:00	2012-08-07 08:00	SOUTH PLATTE RIVER	6400528	STERLING IRR CO DITCH 1	1882-06-22	11861.00000	126.0000 CFS	1, 2, 3, 4, 5, 6, 64	BYPASS CALL FROM 6400533 - PAWNEE DITCH
2012-08-07 06:58	2012-09-11 08:00	SOUTH PLATTE RIVER	6400528	STERLING IRR CO DITCH 1	1882-06-22	11861.00000	126.0000 CFS	1, 2, 3, 64	BYPASS CALL FROM 6400533 - PAWNEE DITCH
2012-08-07 06:59	2012-08-10 08:00	SOUTH PLATTE RIVER	200825	HEWES COOK DITCH	1871-08-10	7892.00000	69.8770 CFS	2, 7, 8, 9, 23, 80	
2012-08-07 07:00	2012-09-12 12:00	SOUTH PLATTE RIVER	200834	LOWER LATHAM DITCH	1877-11-14	10180.00000	97.6800 CFS	2, 4, 5, 6	
2012-08-10 08:00	2012-08-10 12:00	SOUTH PLATTE RIVER	200825	HEWES COOK DITCH	1866-05-05	5969.00000	26.8930 CFS	2, 7, 8, 9, 23, 80	
2012-08-10 12:00	2012-08-12 08:00	SOUTH PLATTE RIVER	200825	HEWES COOK DITCH	1866-05-05	5969.00000	26.8930 CFS	2	
2012-08-10 12:00	2012-08-12 08:00	SOUTH PLATTE RIVER	200824	FARMERS INDEPENDEN T D	1866-05-03	5967.00000	57.8300 CFS	2, 7, 8, 9, 23, 80	BYPASS CALL FROM 0200822 - MEADOW ISLAND DITCH
2012-08-12 08:00	2012-08-15 08:00	SOUTH PLATTE RIVER	200825	HEWES COOK DITCH	1871-08-10	7892.00000	69.8770 CFS	2, 7, 8, 9, 23, 80	
2012-08-15 07:05	2012-08-19 08:00	SOUTH PLATTE RIVER	200825	HEWES COOK DITCH	1871-01-01	7671.00000	5.0178 CFS	2, 7, 8, 9, 23, 80	BYPASS CALL FROM 0200813 - PLATTEVILLE DITCH
2012-08-19 08:00	2012-09-12 08:00	SOUTH PLATTE RIVER	200825	HEWES COOK DITCH	1866-05-05	5969.00000	26.8930 CFS	2	
2012-08-19 08:00	2012-08-30 08:00	SOUTH PLATTE RIVER	200824	FARMERS INDEPENDEN T D	1866-05-03	5967.00000	57.8300 CFS	2, 7, 8, 9, 23, 80	BYPASS CALL FROM 0200822 - MEADOW ISLAND DITCH
2012-08-30 08:00	2012-09-05 08:00	SOUTH PLATTE RIVER	200824	FARMERS INDEPENDEN T D	1866-05-01	5965.00000	26.2300 CFS	2, 7, 8, 9, 23, 80	BYPASS CALL FROM 0200821 - MEADOW ISLAND 1 DITCH

CALLING PRIORITY 2011-2012 (Continued)

Start Date	End Date	Water Source	WDID	Structure Name	Appro Date	Admin No	Decreed Amt	Districts Affected	Set Comments
2012-09-05 08:00	2012-09-07 08:00	SOUTH PLATTE RIVER	200824	FARMERS INDEPENDENT D	1866-05-03	5967.00000	57.8300 CFS	2, 7, 8, 9, 23, 80	BYPASS CALL FROM 0200822 - MEADOW ISLAND DITCH
2012-09-07 08:00	2012-09-10 08:00	SOUTH PLATTE RIVER	200824	FARMERS INDEPENDENT D	1866-05-01	5965.00000	26.2300 CFS	2, 7, 8, 9, 23, 80	BYPASS CALL FROM 0200821 - MEADOW ISLAND 1 DITCH
2012-09-10 08:00	2012-09-12 08:00	SOUTH PLATTE RIVER	200824	FARMERS INDEPENDENT D	1866-05-03	5967.00000	57.8300 CFS	2, 7, 8, 9, 23, 80	BYPASS CALL FROM 0200822 - MEADOW ISLAND DITCH
2012-09-11 08:00	2012-09-12 12:00	SOUTH PLATTE RIVER	6400528	STERLING IRR CO DITCH 1	1882-09-04	11935.00000	38.0000 CFS	1, 2, 3, 64	BYPASS CALL FROM 0100518 - LOWER PLATTE BEAVER D
2012-09-12 08:00	2012-09-12 12:00	SOUTH PLATTE RIVER	200825	HEWES COOK DITCH	1871-10-05	7948.00000	6050.0000 AF	2, 7, 8, 9, 23, 80	BYPASS CALL FROM 0200817 - EVANS NO 2 DITCH
2012-09-12 12:00	2012-09-12 16:00	SOUTH PLATTE RIVER	200834	LOWER LATHAM DITCH	1877-11-14	10180.00000	97.6800 CFS	2, 4, 5, 6, 7, 8, 9, 23, 80	
2012-09-12 12:00	2012-09-12 16:00	SOUTH PLATTE RIVER	6400528	STERLING IRR CO DITCH 1	1882-10-18	11979.00000	323.0000 CFS	1, 2, 3, 64	BYPASS CALL FROM 0100514 - FT MORGAN CANAL
2012-09-12 16:00	2012-09-13 16:00	SOUTH PLATTE RIVER	6400528	STERLING IRR CO DITCH 1	1885-11-20	13108.00000	350.0000 CFS	1, 2, 3, 4, 5, 6, 7, 8, 9, 23,	BYPASS CALL FROM 0200802 - BURLINGTON D RIVER HG
2012-09-13 16:00	2012-09-14 08:00	SOUTH PLATTE RIVER	200825	HEWES COOK DITCH	1885-11-20	13108.00000	350.0000 CFS	2, 7, 8, 9, 23, 80	BYPASS CALL FROM 0200802 - BURLINGTON D RIVER HG
2012-09-13 16:00	2012-09-26 08:00	SOUTH PLATTE RIVER	6400511	HARMONY DITCH 1	1897-05-03	17290.00000	50.0000 CFS	1, 2, 3, 4, 5, 6, 64	BYPASS CALL FROM 6400515 - HARMONY DITCH 2
2012-09-14 08:00	2012-09-15 08:00	SOUTH PLATTE RIVER	200825	HEWES COOK DITCH	1872-07-01	8218.00000	12.1800 CFS	2, 7, 8, 9, 23, 80	BYPASS CALL FROM 0200809 - BRANTNER DITCH
2012-09-15 08:00	2012-09-17 08:00	SOUTH PLATTE RIVER	200825	HEWES COOK DITCH	1885-11-20	13108.00000	350.0000 CFS	2, 7, 8, 9, 23, 80	BYPASS CALL FROM 0200802 - BURLINGTON D RIVER HG



CALLING PRIORITY 2011-2012 (Continued)

Start Date	End Date	Water Source	WDID	Structure Name	Appro Date	Admin No	Decreed Amt	Districts Affected	Set Comments
2012-09-17 08:00	2012-09-18 12:00	SOUTH PLATTE RIVER	200825	HEWES COOK DITCH	1871-10-05	7948.00000	177.0700 CFS	2, 7, 8, 9, 23, 80	BYPASS CALL FROM 0200817 - EVANS NO 2 DITCH
2012-09-18 12:00	2012-09-20 12:00	SOUTH PLATTE RIVER	200825	HEWES COOK DITCH	1872-07-01	8218.00000	12.1800 CFS	2, 7, 8, 9, 23, 80	BYPASS CALL FROM 0200809 - BRANTNER DITCH
2012-09-20 12:00	2012-09-25 16:00	SOUTH PLATTE RIVER	200825	HEWES COOK DITCH	1871-10-05	7948.00000	177.0700 CFS	2, 7, 8, 9, 23, 80	BYPASS CALL FROM 0200817 - EVANS NO 2 DITCH
2012-09-25 16:00	2012-09-26 08:00	SOUTH PLATTE RIVER	200825	HEWES COOK DITCH	1885-11-20	13108.00000	350.0000 CFS	2, 7, 8, 9, 23, 80	BYPASS CALL FROM 0200802 - BURLINGTON D RIVER HG
2012-09-26 08:00	2012-09-27 12:00	SOUTH PLATTE RIVER	6400511	HARMONY DITCH 1	1897-05-03	17290.00000	50.0000 CFS	1,2,3,4,5,6,7,8,9,23,64,80	BYPASS CALL FROM 6400515 - HARMONY DITCH 2
2012-09-27 12:00	2012-10-04 08:00	SOUTH PLATTE RIVER	6400511	HARMONY DITCH 1	1915-08-01	26302.23953	411.0000 CFS	1, 2, 3, 4, 5, 6, 7, 64	BYPASS CALL FROM 0100687 - NORTH STERLING CANAL
2012-09-27 12:00	2012-09-28 08:00	SOUTH PLATTE RIVER	200802	BURLINGTON D RIVER HG	1909-01-13	21562.00000	900.0000 CFS	2, 8, 9, 23, 80	
2012-09-28 08:00	2012-10-05 12:00	SOUTH PLATTE RIVER	200802	BURLINGTON D RIVER HG	1885-11-20	13108.00000	350.0000 CFS	2, 8, 9, 23, 80	
2012-09-28 08:00	2012-10-02 08:00	SOUTH PLATTE RIVER	200825	HEWES COOK DITCH	1909-05-29	21698.00000	510.0000 CFS	2, 7	BYPASS CALL FROM 0200817 - EVANS NO 2 DITCH
2012-10-04 08:00	2012-10-05 12:00	SOUTH PLATTE RIVER	200825	HEWES COOK DITCH	1909-05-29	21698.00000	510.0000 CFS	2, 7	BYPASS CALL FROM 0200817 - EVANS NO 2 DITCH
2012-10-04 08:00	2012-10-05 12:00	SOUTH PLATTE RIVER	6400511	HARMONY DITCH 1	1915-08-01	26302.23953	411.0000 CFS	1, 2, 3, 4, 5, 6, 64	BYPASS CALL FROM 0100687 - NORTH STERLING CANAL
2012-10-05 12:00	2012-10-25 12:00	SOUTH PLATTE RIVER	801002	DENVER CONDUIT NO 20	1880-06-30	11139.00000	10.0000 CFS	8, 80, 23	
2012-10-05 12:00	2012-10-25 08:00	SOUTH PLATTE RIVER	200802	BURLINGTON D RIVER HG	1885-11-20	13108.00000	350.0000 CFS	2, 8, 9	

CALLING PRIORITY 2011-2012 (Continued)

Start Date	End Date	Water Source	WDID	Structure Name	Appro Date	Admin No	Decreed Amt	Districts Affected	Set Comments
2012-10-05 12:00	2012-10-08 08:00	SOUTH PLATTE RIVER	6400511	HARMONY DITCH 1	1915-08-01	26302.23953	411.0000 CFS	1, 2, 3, 4, 5, 6, 7, 64	BYPASS CALL FROM 0100687 - NORTH STERLING CANAL
2012-10-08 08:00	2012-10-23 08:00	SOUTH PLATTE RIVER	100687	NORTH STERLING CANAL	1915-08-01	26302.23953	411.0000 CFS	1, 2, 3, 4, 5, 6, 7	
2012-10-08 08:00	2012-10-15 08:00	SOUTH PLATTE RIVER	6499999	SOUTH PLATTE RIVER COMPACT	1974-03-15	45364.00000	26.8000 CFS	64	BYPASS CALL FROM 6400535 - SOUTH PLATTE DITCH
2012-10-15 08:00	2012-10-17 08:00	SOUTH PLATTE RIVER	6400511	HARMONY DITCH 1	1995-12-22	53316.00000	77.0000 CFS	64	BYPASS CALL FROM 6400533 - PAWNEE DITCH
2012-10-23 08:00	2012-11-01 08:00	SOUTH PLATTE RIVER	103552	PREWITT RES	1929-12-31	31423.29219	34960.00 00 AF	1, 2, 3, 4, 5, 6, 7	
2012-10-25 08:00	2012-10-25 12:00	SOUTH PLATTE RIVER	200802	BURLINGTON D RIVER HG	1909-01-13	21562.00000	900.0000 CFS	2, 8, 9	
2012-10-25 12:00	2012-11-01 08:00	SOUTH PLATTE RIVER	200802	BURLINGTON D RIVER HG	1909-01-13	21562.00000	900.0000 CFS	2, 8, 9, 23, 80	

**Table 6 – Staffing and Statistics**

Staffing

Dam Safety Engineers	3
Water Resource Engineers	6
IT Professional	1
Engineering/Physical Science Techs/Assistants	9
Program Asst 1, & Technician II	3
Physical Science Researcher/Scientist	5
Full-Time Water Commissioners	25
Permanent Part-Time Water Commissioners	<u>3</u>
<b>TOTAL STAFF</b>	<b>55</b>

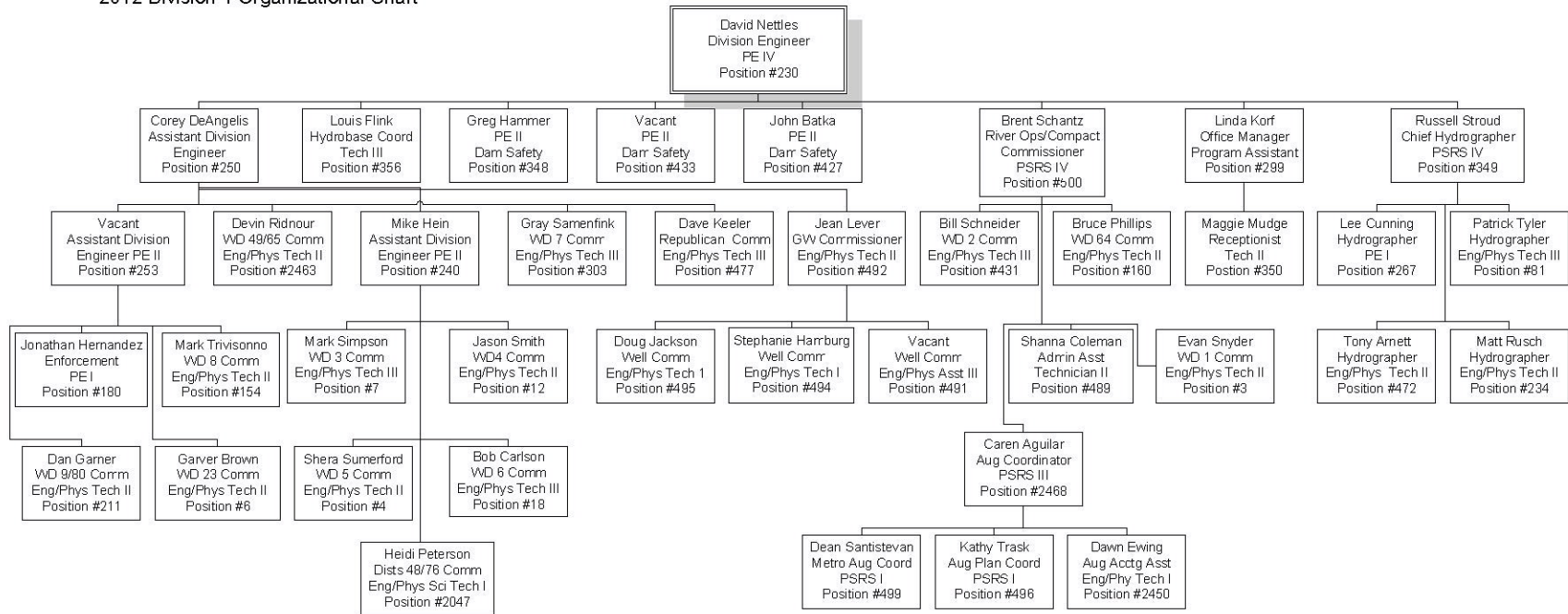
Statistics

Number of Well Permits	1,776
Number of Plans for Augmentation	1,219
Number of Dams Routinely Inspected	163
Number of Active Substitute Supply Plans	195
Number of Contacts to give Public Assistance	111,857+



**Table 7 – Organizational Chart**

**2012 Division 1 Organizational Chart**



2012 Division 1 Organizational Chart for Water Commissioners

