

Division 1 Annual Report



Olympus Dam at Estes Park (photo by Jeff Dahlstrom)

Irrigation Water Year 2010

TABLE OF CONTENTS

WATER SUPPLY AND ADMINISTRATION	1
Water Supply Conditions	1
Well Administration.....	1
Augmentation Plan Developments	2
Data Logger and Telemetry Installation	3
2010 Abandonment List.....	3
Protocols	4
TABLES	5
Table 1 – Storage Comparison.....	5
Table 2 – Diversions by Water District.....	6
Table 3 - Transmountain Diversion Summary.....	7
Table 4 – Reservoir Storage Summary.....	8
Table 5 – Water Diversion Summaries	21
Table 6 – Augmentation Releases.....	23
Table 7 – Water Court Activities	24
Table 8 – Main Stem Call Record.....	25
Table 9 – Staffing and Statistics	32
Table 10 – Organizational Chart.....	33

WATER SUPPLY AND ADMINISTRATION

Water Supply Conditions

November 2009 through January 2010 exhibited above average flow conditions along the mainstem and tributaries with generally more water available than demand on the South Platte and most tributaries, thus no call on the river. Diversions of water below Denver along the South Platte were for post irrigation season storage while diversions upstream of Denver on the mainstem and tributaries were either for storage or for direct flow municipal uses. These diversions were hindered by very cold conditions in December and early January as well as dam safety construction efforts. Nevertheless, overall storage conditions were better than have existed in 10 years.

February through April saw continued diversions for reservoir storage and municipal use with the first mainstem call (for storage) of the Irrigation Year occurring February 11. However, all of the reservoirs on the plains were near full by the end of February and the call on the mainstem of the South Platte was removed March 4, allowing recharge to begin. Though the overall storage levels along the tributaries and mainstem were as high as they have been in forty years, one area of concern was that the snowpack was below average throughout the basin. However, the latter part of April included significant snowfall in the mountains and rain on the plains which caused far above average monthly stream flow throughout the basin and virtually eliminated early demand for irrigation. This, in turn, allowed for significant recharge to continue and, since recharge is a key supply of replacement water for out-of-priority irrigation well depletions, the benefits of this recharge will extend well into the future.

May through July water supply conditions remained very positive. Continued rain on the plains and considerable late May snowfall eliminated most water supply concerns and shifted concern to potential low area flooding. The snowmelt runoff, combined with a significant area wide precipitation event from June 11 through 13, created significant high water in many areas, including flooding issues on the Big Thompson and Cache la Poudre Rivers as well as the South Platte River below Kersey. However, dry July conditions slid everything back to a more “normal” situation. In fact, as a harbinger of things to come, the mean daily flow at the key mainstem index gage near Kersey was 79% of the historic value.

August through October 2010 marked a significant change in the water supply conditions with a very dry weather pattern settling in. September ranked in the top 10 hottest and driest Septembers on record throughout northeast Colorado with two major wild fires in the foothills in early to mid-September (the 4 Mile Canyon and Reservoir Road fires). Stream flows also fell to well below normal for this period (the Cache la Poudre River at the canyon mouth approached the all time record low flow on September 27). The only bright spot was that the high reservoir levels due to the previous wet weather provided significant supplemental water so that most users came through relatively unscathed to the point the end of October reservoir readings were only 3% less than the long term average.

Well Administration

Only one complaint in water court against a well owner for illegal well pumping was filed in 2010. The steady decline in complaints continues in large part to a general rise in awareness of well operation requirements throughout the community of well owners. Many small potential violations were seen this year that did not appear to exceed a day or two of pumping, thus not warranting court action. The typical scenario was small use shown through an electric meter only, which means it could have been serving electricity to other things like an electric fence,

small heater or light rather than just measuring well pumping. The well measurement rules once promulgated and in effect, will assist in determining true well pumping as opposed to the owner using the power drop for other uses as just mentioned.

In 2010 the well enforcement program, in addition to annual meter reads, focused on visiting each well on the 2010 Abandonment List. Two benefits to the Abandonment process were (A) that many wells once labeled as "Does Not Exist" were found when the well owners showed Division Staff true locations that differed significantly from decreed locations and (B) continuing a trend observed last year, Division staff assisted many well owners in downgrading wells that were only being used for exempt purposes from non-exempt to exempt status.

Augmentation Plan Developments

The water accounting group is receiving approximately 270 accounting submissions a month, or about 3,240 per year, from augmentation plan administrators and municipalities. The continued growth of accounting submittals led Division One to discontinue the Augmentation Planning website hosted by the Integrated Decisions Support Group at Colorado State University and make the accounting submissions available to the public through the Division of Water Resource's Laserfiche Weblink. Due to the functionality of the Laserfiche Weblink, Division One is now able to post the complete accounting workbook as submitted in the original spreadsheet format.

A new tool for tracking the timeliness of monthly accounting submissions was developed with the assistance of the Accounting Coordinator. If a particular plan's accounting is past due, the tool has the capability to send out an email notification alerting the plan administrator. The additional task of tracking gravel pit accounting submissions was also assigned to the Accounting Coordinator.

The focus of accounting audits in 2010 was on pending water court applications that use a water budget (consumptive use based) methodology instead of flow meter readings when calculating depletions from well pumping. In particular, three pending water court applicants were informed the water budget methodology would no longer be approved by the Office of the State Engineer as an acceptable method for calculating well depletions in a substitute water supply plan, and these applicants were required to install flow meters by April 1, 2011.

Monitoring the Metro return flows this year showed there were no days in which the river was shorted by the many claims of reusable effluent. In fact, over 30,000 acre-feet of water that was claimed to be reusable was not reused. This large amount of reusable effluent was not captured due to lack of exchange potential and absence of infrastructure to capture it. This windfall of water to downstream users will be diminishing as reuse projects, such as Aurora's Prairie Waters Project, become operational.

Compact Administration

Division One continues to administer the South Platte Compact and the Laramie River Decree in conformance with that compact and decree. The very good flow conditions discussed above meant there were only 4 days (August 6 through 10) of call under the South Platte Compact in 2010 and that all diversions in the Laramie River basin continued to be in accordance with that decree.

The Republican River Compact continues to be administered by staff in both the Division One and the Denver office in conjunction with the Republican River Water Conservation District.

Much of the work on this Compact has focused on the proposed Compact Compliance Pipeline with discussions and negotiations between Colorado, Kansas, and Nebraska occurred during all of Irrigation Year 2010 without a final resolution.

Data Logger and Telemetry Installation

In Irrigation Year 2010 Division 1 continued working with water entities to install data loggers and telemetry. This effort to increase the diversion and stream flow data reported on the web has borne fruit in two different ways: it has allowed improved administration as both users and Division staff can quickly see diversion quantity problems and; it has also resulted in greater trust between users by providing real time confirmation that all users are operating in compliance with the priority system and their water rights.

Partnerships between Division 1 and several water conservancy districts were also a key aspect in continuing the installation of data loggers and telemetry. Division 1 was able to work with the Saint Vrain Left Hand Water Conservancy District to purchase data logger and telemetry equipment for installation on 12 sites in Water District 5. Division 1 also worked with the Northern Colorado Water Conservancy District and the Lower South Platte Water Conservancy District to secure a Water Supply Reserve Account Grant from the Colorado Water Conservation Board through the South Platte Basin Roundtable for the purchase of data loggers for 10 sites in Water Districts 1 and 64 as well as the purchase of both data loggers and cell phone telemetry equipment for 10 sites in Water District 4. All the equipment was installed by personnel from Division 1 and the partner water conservancy districts with ongoing data transmission costs absorbed by each of the of the partners.

COMMUNITY INVOLVEMENT

Personnel of Division 1 continue to attend and participate in Ditch Company and Conservancy District meetings; meetings of water user, realtor, and homeowner groups; as well as South Platte Basin Roundtable meetings. Division 1 staff also continued participating in the Lower South Platte Irrigation Research and Demonstration Project advisory committee to examine alternatives to the traditional “buy and dry” approach to water transfers from irrigation to municipal use.

2010 Abandonment List

Despite the adverse budget outlook, it was decided to move forward with the 2010 Abandonment List. All Water Commissioners were told that they were not required to generate an abandonment list for their district, but if they had already been working on a list or knew about specific water rights they wanted to list, they could do so. As a result of this, the decision was made to concentrate on two areas of “low hanging fruit”.

The first area was all the wells not included in an augmentation plan that had been field inventoried over the last 10 years. A lot of information on the status of these wells had been discovered through this inventory process and there was a concern related to the loss of that information by waiting another 10 years to place these on the 2020 Abandonment List. As many wells were found to be inactive, or non-existent, these were perfect candidates for abandonment.

The second area was surface rights where it appeared there was stronger evidence of abandonment. In other words, rights where the evidence of abandonment was less clear were generally not listed. While these rights could have been listed, they would have required extra

work where the time or resources to perform this work did not exist. Also, since several newer Water Commissioners had not been in their districts for 10 years, they did not have historic knowledge regarding the actual use of structures other than the historic diversion records.

The Abandonment Manager in Hydrobase was used for the first time to generate the published list and to track the abandonment process. Division 1 had a total of 1415 water rights (1322 underground rights and 93 surface rights) on the proposed list published on July 1, 2010. The 93 surface rights were on the proposed list due to specific requests from the Water Commissioners for various reasons. The 1322 ground water rights were generated by querying Hydrobase for all wells that were decreed for 50 gpm or more for nonexempt type uses that had no diversion records (of any kind including comments) since November 1, 1994, and were not associated with an augmentation plan. From the Hydrobase query, all wells that were (based on our records) included in GASP or similar plans during the 2000 to 2010 period were removed. Also removed were any water rights decreed as alternate points of diversion to surface water rights and any water rights junior to December 30, 1999. In addition, some structures that appeared to be completed in a nontributary Denver Basin aquifer were removed; however, this was not checked comprehensively due to lack of resources. Work to go through the list and remove any wells that have a pre213 worksheet associated with them is still planned. Any well for which an Affidavit of Abandonment form was received (due to a downgrade of a nonexempt well to an exempt well) was added back to the list.

The above criteria resulted in a total of 899 certified notices mailed out on July 30, 2010. For ease of filing an objection, an optional form was created with a list of questions that geared the owner towards the type of evidence that would be pertinent to removal of the right from the proposed list.

The 2010 Abandonment List generated a large number of inquiries (calls, emails, letters, and walk-ins) that are still being received and responded to. By the end of the 2010 Irrigation Year inquiries had been received on over 25% of the water rights on the proposed list, but only 29 of the 1415 water rights on the list had objections filed by that date. To be consistent and fair, any formal decisions on objections were postponed until after the July 1, 2011 objection deadline. The only exceptions were where extenuating circumstances existed (such as clerical errors or the owner was trying to sell the property). Due to different situations, there was a significant amount of research required on pertinent information (decrees, decree applications, permit files, map and filing statements, pre213 worksheets, county parcel information, enforcement files, etc.) prior to responding to inquiries. By October 31, 2010, inquiries on approximately 200 (mostly walk-ins and phone calls) of the more than 350 water rights that we had received inquiries on had been responded to.

Protocols

In 2010, no new protocols were created and no existing protocols were updated.

Division Engineer Change

On June 30, 2010 James R. "Jim" Hall retired as the Division Engineer. Jim had been Division Engineer since 2003 and had worked for the Colorado Division of Water resources since 1981. David L. "Dave" Nettles became the Division Engineer on September 1, 2010.

TABLES

Table 1 – Storage Comparison

Runoff Forecast

SOUTH PLATTE RIVER BASIN
Reservoir Storage (1000 AF) - End of January

RESERVOIR	USABLE CAPACITY	USABLE STORAGE		AVERAGE
		THIS YEAR	LAST YEAR	
ANTERO	19.9	20.0	20.0	16.4
BARR LAKE	30.1	19.5	26.2	24.0
BLACK HOLLOW	6.5	2.8	3.2	3.9
BOYD LAKE	48.4	36.8	40.5	32.1
BUTTON ROCK	16.2	14.1	13.7	13.0
CACHE LA POUFRE	10.1	8.6	9.0	7.2
CARTER	108.9	53.6	93.1	84.6
CHAMBERS LAKE	8.8	3.6	6.6	3.0
CHEESMAN	79.0	75.1	62.8	59.7
COBB LAKE	22.3	20.2	20.7	13.9
ELEVEN MILE	98.0	100.5	99.7	95.9
EMPIRE	36.5	35.8	30.0	22.8
FOSSIL CREEK	11.1	5.8	8.8	6.8
GROSS	41.8	25.0	26.1	26.0
HALLIGAN	6.4	5.2	4.9	4.3
HORSECREEK	14.7	4.4	7.0	11.6
HORSETOOTH	149.7	85.4	70.4	99.0
JACKSON	26.1	24.5	22.9	26.1
JULESBURG	20.5	16.5	17.4	18.8
LAKE LOVELAND	10.3	7.3	9.3	8.7
LONE TREE	8.7	6.4	7.4	6.4
MARIANO	5.4	3.0	4.4	4.2
MARSHALL	10.0	3.9	6.8	5.1
MARSTON	13.0	2.7	9.4	12.8
MILTON	23.5	19.8	6.7	15.5
POINT OF ROCKS	70.6	60.8	58.7	57.0
PREWITT	28.2	22.3	22.5	19.3
RIVERSIDE	55.8	42.1	37.7	41.7
SPINNEY MOUNTAIN	49.0	34.7	34.1	33.3
STANDLEY	42.0	33.2	35.4	33.1
TERRY LAKE	8.0	5.3	5.9	5.3
UNION	13.0	11.8	11.9	10.6
WINDSOR	15.2	11.5	11.7	10.8

Information taken from Colorado Basin Outlook Report, February 1, 2011

SOUTH PLATTE RIVER BASIN
WATER SNOWPACK

WATERSHED	NUMBER OF DATA SITES	THIS YEAR AS % OF	
		LAST YEAR	AVERAGE
BIG THOMPSON BASIN	7	186	137
BOULDER CREEK BASIN	5	136	104
CACHE LA POUFRE BASIN	8	180	135
CLEAR CREEK BASIN	4	172	144
SAINT VRAIN BASIN	4	188	113
UPPER SOUTH PLATTE BASIN	16	120	94

*Information taken from Colorado Basin Outlook Report, February 1, 2011.

Table 2 – Diversions by Water District

**DIVISION 1
2010 Diversions**

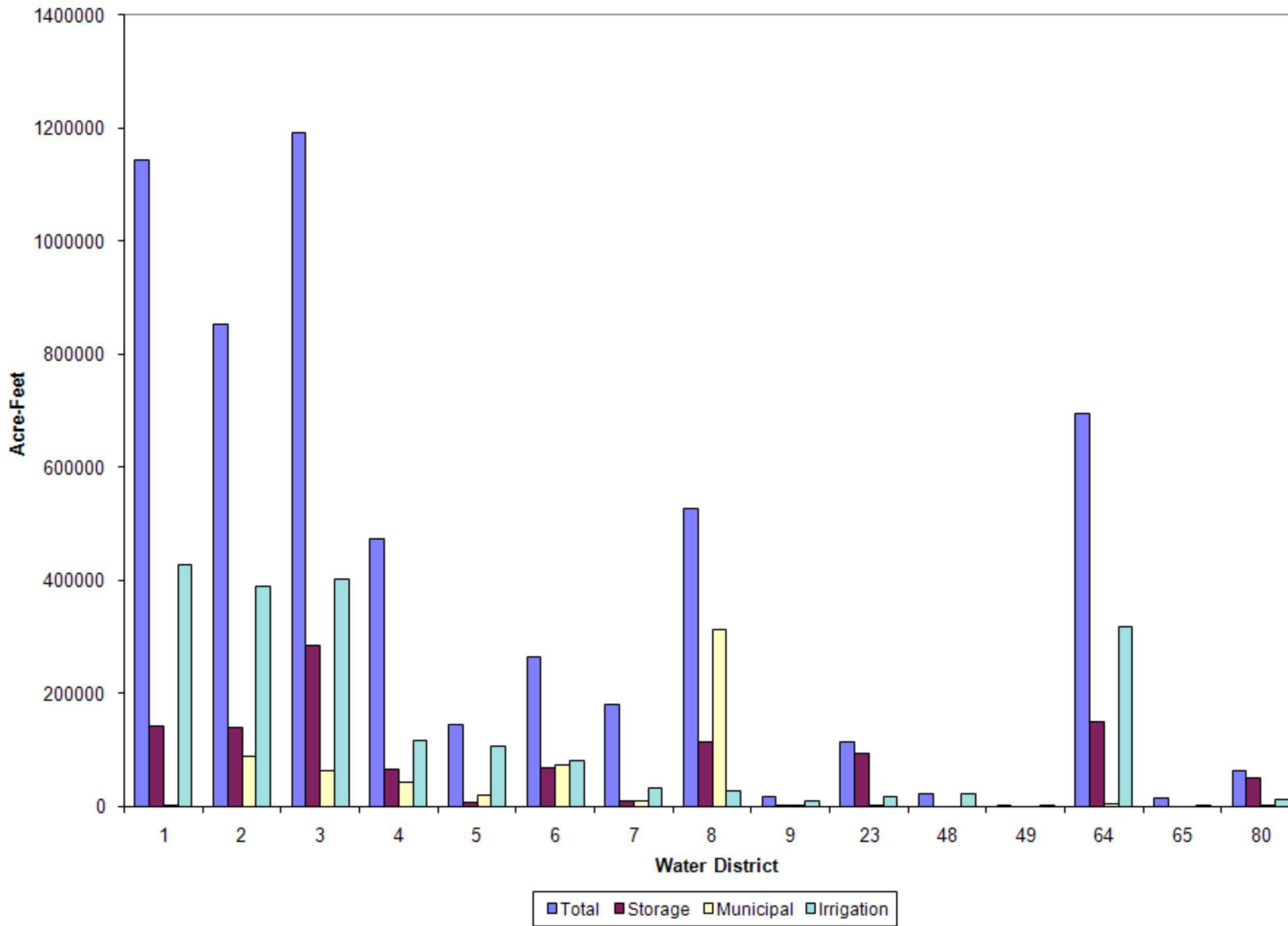


Table 3 - Transmountain Diversion Summary

**2009 TRANSMOUNTAIN DIVERSION SUMMARY - INFLOWS
(November 2009 - October 2010)**

RECIPIENT								SOURCE		
WD	ID	NAME	STREAM	10 YEAR AVG		CURRENT YEAR		WD	ID	STREAM
				AF	DAYS	AF	DAYS			
3	4604	WILSON SUPPLY DITCH	CACHE LA POUFRE RIVER	1,158	66	676	78	48	4604	SAND & DEADMAN CR.
3	4608	DEADMAN DITCH	CACHE LA POUFRE RIVER	402	58	160	50	48	4608	DEADMAN CREEK
3	4606	BOB CREEK DITCH	CACHE LA POUFRE RIVER	100	39	0	0	48	4606	NUNN CREEK
3	4607	COLUMBINE DITCH	CACHE LA POUFRE RIVER	0	0	0	0	48	4607	DEADMAN CREEK
3	4600	LARAMIE-POUDRE TUNNEL	CACHE LA POUFRE RIVER	8,651	102	5,245	93	48	4600	LARAMIE RIVER
3	4605	SKYLINE DITCH	CACHE LA POUFRE RIVER	17	2	0	0	48	4605	LARAMIE RIVER
3	4602	CAMERON PASS DITCH	CACHE LA POUFRE RIVER	69	34	0	0	47	4602	MICHIGAN RIVER
3	4603	MICHIGAN DITCH	CACHE LA POUFRE RIVER	2,298	333	1,854	343	47	4603	MICHIGAN RIVER
3	4601	GRAND RIVER DITCH	CACHE LA POUFRE RIVER	8,650	167	7,054	163	51	4601	COLORADO RIVER
4	4634	ADAMS TUNNEL	BIG THOMPSON RIVER	130,482	333	99,110	338	51	4634	COLORADO RIVER
6	4655	MOFFAT TUNNEL	SOUTH PLATTE RIVER	30,047	362	15,096	352	51	4655	FRASER RIVER
7	4625	BERTHOUD PASS DITCH	CLEAR CREEK	321	88	269	98	51	4625	FRASER RIVER
7	4626	VIDLER TUNNEL	CLEAR CREEK	356	76	481	93	36	4626	MONTEZUMA CREEK
7	4682	STRAIGHT CREEK TUNNEL	CLEAR CREEK	160	365	112	365	36	4682	STRAIGHT CREEK
8	653	ROBERTS TUNNEL	SOUTH PLATTE RIVER	47,009	293	32,461	167	36	4684	BLUE RIVER
23	4611	BOREAS PASS DITCH	SOUTH PLATTE RIVER	73	64	52	41	36	4685	INDIANA CREEK
23	4612	HOOSIER PASS DITCH	ARKANSAS RIVER	4,367	189	5,132	234	36	4683	BLUE RIVER
23	4490	AURORA HOMESTAKE	SOUTH PLATTE RIVER	18,160	260	12,311	238	37	4644	HOMESTAKE CREEK

Table 4 – Reservoir Storage Summary

2009-2010 RESERVOIR STORAGE SUMMARIES BY DISTRICT

WATER DISTRICT 1

WD	ID	RESERVOIR NAME	SOURCE STREAM	AMOUNT IN STORAGE (AF)				
				MINIMUM		MAXIMUM		END OF YEAR
				AF	DATE	AF	DATE	AF
1	3009	CORNISH PLAINS RESERVOIR	CACHE LA POUDBRE RIVER	2,165	10/27/10	2,655	05/31/10	2,165
1	3400	VANCIL	SOUTH PLATTE	1,758	09/30/10	4,487	06/30/10	4,156
1	3592	HORSE CREEK RESERVOIR	HORSE CREEK	485	11/01/09	15,494	03/31/10	2,859
1	3570	BIJOU #2	SOUTH PLATTE	520	02/28/10	4,300	11/01/09	4,300
1	3609	PROSPECT RESERVOIR	PROSPECT CREEK	1,564	11/01/09	5,648	06/30/10	2,012
1	3651	RIVERSIDE	SOUTH PLATTE	22,130	09/30/10	63,303	04/30/10	25,226
1	3816	EMPIRE	SOUTH PLATTE	3,433	11/01/09	37,542	03/31/10	6,757
1	3817	JACKSON	SOUTH PLATTE	14,445	10/31/10	27,407	05/31/10	14,445
1	3902	LORD RESERVOIR #4	SOUTH PLATTE	0	09/20/10	721	03/31/10	0
1		TOTALS		46,500		161,557		61,920

2009-2010 RESERVOIR STORAGE SUMMARIES BY DISTRICT

WATER DISTRICT 2

WD	ID	RESERVOIR NAME	SOURCE STREAM	AMOUNT IN STORAGE (AF)				
				MINIMUM		MAXIMUM		END OF YEAR
				AF	DATE	AF	DATE	AF
2	3375	QUINCY RESERVOIR	SOUTH PLATTE	1,603	12/31/09	2,486	06/30/10	1,855
2	3699	WEST GRAVEL LAKES COMBINED	SOUTH PLATTE	2,508	08/31/10	2,806	12/31/09	2,565
2	3700	TANI LAKES COMBINED	SOUTH PLATTE	11,010	09/30/10	13,532	06/30/10	11,873
2	3837	OASIS RES/BARR	SOUTH PLATTE	6,448	09/30/10	19,127	05/31/10	8,438
2	3858	LOWER LATHAM	SOUTH PLATTE	5,363	09/01/10	6,212	11/01/09	5,363
2	3861	GREAT WESTERN	WALNUT CREEK	1,410	10/01/10	2,370	05/01/10	1,410
2	3876	MILTON	SOUTH PLATTE	0	11/30/09	22,190	04/30/10	3,722
2	3890	COAL RIDGE WASTE	LITTLE DRY CREEK	535	03/01/10	792	10/01/10	792
2	3903	STANDLEY	WOMAN CREEK	34,346	10/01/10	42,385	05/01/10	34,346
2		OTHERS		128		161		161
2		TOTALS		63,351		112,061		70,525

2009-2010 RESERVOIR STORAGE SUMMARIES BY DISTRICT

WATER DISTRICT 3

WD	ID	RESERVOIR NAME	SOURCE STREAM	AMOUNT IN STORAGE (AF)				
				MINIMUM		MAXIMUM		END OF YEAR
				AF	DATE	AF	DATE	AF
3	3676	LONG DRAW/GRAND RIVER	LONG DRAW CREEK	2,189	10/31/10	10,625	6/30/10	2,189
3	3678	MOUNTAIN SUPPLY RESERVOIR #20	JOE WRIGHT RESERVOIR	3,785	09/30/10	7,207	06/30/10	3,931
3	3679	CHAMBERS	JOE WRIGHT CREEK	4,752	10/31/10	8,600	6/30/10	4,752
3	3683	BARNES MEADOW RESERVOIR	BARNES MEADOWS CREEK	1,598	03/31/10	2,349	06/30/10	2,263
3	3697	NORTH POU DRE #2/DEM MEL LAKE	N FK POU DRE RIVER	2,219	10/31/10	3,363	06/30/10	2,219
3	3698	NORTH POU DRE #5/BEE LAKE	N FK POU DRE RIVER	4,331	08/31/10	5,436	03/31/10	5,031
3	3699	NORTH POU DRE RESERVOIR #6	N FK POU DRE RIVER	6,988	10/31/10	9,384	11/01/09	6,988
3	3702	NORTH POU DRE #3/HACKEL LAKE	N FK POU DRE RIVER	2,394	12/31/10	2,889	06/30/10	2,563
3	3704	NORTH POU DRE #4	N FK POU DRE RIVER	514	03/31/10	764	07/31/10	810
3	3707	INDIAN CREEK/MTN SUPPLY #16	INDIAN CREEK	1,074	07/31/10	1,534	05/31/10	1,454
3	3708	MOUNTAIN SUPPLY RESERVOIR #18	BOX ELDER CREEK	547	02/28/10	788	06/30/10	611
3	3712	HALLAGAN/NORTH POU DRE #16	N FK POU DRE RIVER	1,477	09/30/10	6,428	04/30/10	2,574
3	3713	SEAMAN/MILTON SEAMAN	N FK POU DRE RIVER	3,087	09/30/10	5,008	11/01/10	4,056
3	3715	PARK CREEK	PARK CREEK	3,169	01/31/10	6,852	03/31/10	5,160
3	3716	NORTH POU DRE #15	N FK POU DRE RIVER	2,170	11/30/09	5,207	06/30/10	4,822
3	3725	DOUGLASS	CACHE LA POU DRE RIVER	6,320	11/01/09	8,422	05/31/10	7,335
3	3726	WORSTER	SHEEP CREEK	41	09/30/10	3,643	06/30/10	157
3	3727	WINDSOR RESERVOIR #8	CACHE LA POU DRE RIVER	4,199	09/30/10	10,004	05/31/10	7,949
3	3728	NO. 8 ANNEX	CACHE LA POU DRE RIVER	2,815	11/01/99	3,725	04/30/10	3,482
3	3730	COBB LAKE	CACHE LA POU DRE RIVER	18,080	08/31/10	21,660	05/31/10	20,325
3	3732	HORSETOOTH	DIXON CANYON CREEK	68,700	11/01/09	150,182	06/30/10	71,428
3	3735	CURTIS	CACHE LA POU DRE RIVER	662	11/30/09	742	05/31/10	684
3	3736	ROCKY RIDGE/WATER SUPPLY #1	CACHE LA POU DRE RIVER	3,223	11/30/09	3,711	06/30/10	3,263
3		SUBTOTALS		144,334		278,523		164,046

2009-2010 RESERVOIR STORAGE SUMMARIES BY DISTRICT

WATER DISTRICT 3 (CONTINUED)

WD	ID	RESERVOIR NAME	SOURCE STREAM	AMOUNT IN STORAGE (AF)				
				MINIMUM		MAXIMUM		END OF YEAR
				AF	DATE	AF	DATE	AF
		BALANCE FROM PREVIOUS PAGE		144,334		278,523		164,046
3	3737	WATER SUPPLY #2 & #3	CACHE LA POUDRE RIVER	3,035	09/30/10	4,386	03/31/10	3,053
3	3738	WINDSOR RESERVOIR	CACHE LA POUDRE RIVER	6,551	09/30/10	17,238	04/30/10	13,652
3	3739	WATER SUPPLY #4	WATER SUPPLY RES #2 & #3	546	12/31/09	855	06/30/10	686
3	3740	KLUVER	CACHE LA POUDRE RIVER	160	10/31/10	999	05/31/10	160
3	3742	LONG POND/WATER SUPPLY #5	CACHE LA POUDRE RIVER	2,362	07/31/10	2,890	06/30/10	2,710
3	3744	BLACK HOLLOW	CACHE LA POUDRE RIVER	3,816	10/31/10	6,242	07/31/10	3,816
3	3745	DOWDY LAKE RESERVOIR	SOUTH PINE CREEK	784	10/31/10	880	05/31/10	784
3	3751	SOUTH GRAY RESERVOIR	BOX ELDER CREEK	95	09/30/10	703	05/31/10	104
3	3770	WINDSOR LAKE	CACHE LA POUDRE RIVER	2,693	01/31/10	3,009	03/31/10	2,906
3	3772	SEELEY	CACHE LA POUDRE RIVER	865	11/01/09	1,176	06/30/10	1,080
3	3774	FOSSIL CREEK	FOSSIL CREEK	4,082	09/30/10	11,019	05/31/10	5,031
3	3775	TIMNATH	DUCK SLOUGH	917	09/30/10	10,575	05/31/10	2,028
3	3780	CLAYMORE	CACHE LA POUDRE RIVER	81	08/31/10	874	04/30/10	342
3	3786	WOOD	ROLLARD DRAW	2,084	07/31/10	2,770	03/31/10	2,422
3	3804	WARREN	CACHE LA POUDRE RIVER	103	10/31/10	1,069	11/01/09	103
3	3805	TERRY/LARIMER WELD	CACHE LA POUDRE RIVER	1,566	09/30/10	7,978	06/30/10	5,235
3	3814	PANHANDLE RESERVOIR	PANHANDLE CREEK	1,017	11/01/09	1,017	11/01/09	1,017
3	3952	RAWHIDE	CACHE LA POUDRE RIVER	14,824	09/30/10	16,101	04/30/10	14,824
3		OTHERS		5,140		14,289		6,513
3		TOTALS		195,055		382,593		230,512

2009-2010 RESERVOIR STORAGE SUMMARIES BY DISTRICT

WATER DISTRICT 4

WD	ID	RESERVOIR NAME	SOURCE STREAM	AMOUNT IN STORAGE (AF)				
				MINIMUM		MAXIMUM		END OF YEAR
				AF	DATE	AF	DATE	AF
4	3659	LOVELAND MUNICIPAL	BIG THOMPSON	5,118	05/31/10	6,788	10/31/10	6,788
4	4110	BOYD LAKE	BIG THOMPSON	37,682	10/31/10	48,007	06/17/10	37,682
4	4116	DONATH	BIG THOMPSON	799	02/28/10	1,129	06/17/10	848
4	4123	HORSETOOTH RESERVOIR	BIG THOMPSON	4,710	10/31/10	7,861	05/31/10	4,710
4	4131	LOVELAND GREELEY RESERVOIR	BIG THOMPSON	8,899	09/30/10	12,444	06/30/10	9,514
4	4133	LOVELAND LAKE	BIG THOMPSON	1,552	10/31/10	2,165	05/31/10	1,552
4	4134	BOEDECKER LAKE/MARINO	BIG THOMPSON	715	09/30/10	5,571	05/31/10	2,822
4	4136	LON HAGLER	BIG THOMPSON	2,632	08/31/10	5,069	06/11/10	4,478
4	4137	LONE TREE	BIG THOMPSON	3,422	10/31/10	8,819	04/30/10	3,422
4	4146	WELCH LAKE	BIG THOMPSON	3,352	09/30/10	6,968	06/17/10	3,352
4	4156	BOULDER & LARIMER/ISH	LITTLE THOMPSON	4,120	11/30/09	7,128	04/30/10	5,388
4	4166	HERTHA RESERVOIR	DRY CREEK HERTHA	1,183	09/30/10	1,703	01/11/10	1,224
4	4513	CARTER	BIG THOMPSON	38,560	10/31/10	111,556	06/30/10	38,560
4		OTHERS		1,707		3,082		2,153
4		TOTALS		114,451		228,290		122,493

2009-2010 RESERVOIR STORAGE SUMMARIES BY DISTRICT

WATER DISTRICT 5

WD	ID	RESERVOIR NAME	SOURCE STREAM	AMOUNT IN STORAGE (AF)				
				MINIMUM		MAXIMUM		END OF YEAR
				AF	DATE	AF	DATE	AF
5	3905	UNION	ST. VRAIN	11,310	09/30/10	12,768	05/31/10	12,543
5	4010	BUTTON ROCK	ST. VRAIN	12,069	03/31/10	16,286	05/31/10	15,867
5	4020	BEAVER POND	BEAVER CREEK	320	11/30/09	2,400	06/30/10	320
5	4032	HIGHLAND #2	ST. VRAIN	880	09/30/10	3,589	04/30/10	3,312
5	4037	HIGHLAND #1	ST. VRAIN	572	07/31/10	979	04/30/10	697
5	4038	HIGHLAND #3	ST. VRAIN	548	09/30/10	1,670	05/31/10	1,246
5	4063	PLEASANT VALLEY	ST. VRAIN	1,951	10/31/10	3,076	12/31/09	1,951
5	4065	MCCALL RESERVOIR	ST. VRAIN	454	11/30/09	484	04/30/10	464
5	4067	OLIGARCHY RESERVOIR #1	ST. VRAIN	1,230	09/30/10	1,737	07/31/10	1,640
5	4071	FOOTHILLS	ST. VRAIN	810	09/30/10	4,060	04/30/10	1,368
5	4072	CLOVER BASIN RESERVOIR	ST. VRAIN	0	04/30/10	589	07/31/10	514
5	4073	MCINTOSH	ST. VRAIN	530	10/31/10	2,254	04/30/10	530
5	4076	LEFT HAND PARK	LEFT HAND CREEK	494	10/31/10	1,403	06/30/10	494
5	4081	LAGERMANN	LEFT HAND CREEK	612	02/28/10	845	10/31/10	845
5	4379	NEW THOMAS RESERVOIR	HOWLETT GULCH	2,228	10/31/10	2,335	04/30/10	2,228
5	4488	LEFT HAND VALLEY	LEFT HAND CREEK	633	10/31/10	1,550	04/30/10	633
5		TOTALS		34,641		56,025		44,652

2009-2010 RESERVOIR STORAGE SUMMARIES BY DISTRICT

WATER DISTRICT 6

WD	ID	RESERVOIR NAME	SOURCE STREAM	AMOUNT IN STORAGE (AF)				
				MINIMUM		MAXIMUM		END OF YEAR
				AF	DATE	AF	DATE	AF
6	4172	BARKER	BOULDER CREEK	6,446	03/31/10	11,329	05/31/10	7,461
6	4173	BASELINE	BOULDER CREEK	2,679	09/30/10	5,326	04/30/10	2,679
6	4178	HILLCREST	BOULDER CREEK	1,973	02/28/10	2,207	04/30/10	2,075
6	4180	LEGGETT	BOULDER CREEK	1,425	02/28/10	1,601	04/30/10	1,502
6	4185	PANAMA	BOULDER CREEK	200	11/30/09	4,250	04/30/10	2,350
6	4187	SIX MILE	BOULDER CREEK	560	09/30/10	1,550	05/31/10	640
6	4199	GROSS	SOUTH BOULDER CREEK	20,693	03/31/10	41,235	06/30/10	37,345
6	4212	MARSHALL	SOUTH BOULDER CREEK	4,026	10/31/10	8,090	03/31/10	4,026
6	4230	VALMONT	SOUTH BOULDER CREEK	6,890	02/28/10	7,426	04/30/10	7,126
6	4238	SILVER	NORTH BOULDER CREEK	1,036	02/28/10	3,996	06/30/10	3,415
6	4489	GOOSE	NORTH BOULDER CREEK	1,036	11/30/09	1,036	11/30/09	1,036
6	4515	BOULDER	BOULDER CREEK	7,489	03/31/10	10,202	06/30/10	8,359
6		OTHERS		818		2,191		1,721
6		TOTALS		55,271		100,439		79,735

2009-2010 RESERVOIR STORAGE SUMMARIES BY DISTRICT

WATER DISTRICT 7

WD	ID	RESERVOIR NAME	SOURCE STREAM	AMOUNT IN STORAGE (AF)				
				MINIMUM		MAXIMUM		END OF YEAR
				AF	DATE	AF	DATE	AF
7	3018	WELTON RESERVOIR	CLEAR CREEK	9,097	10/31/10	9,761	06/30/10	9,697
7	3308	BLUNN	CLEAR CREEK	5,045	10/31/10	6,273	05/31/10	5,045
7	3324	RALSTON	RALSTON CREEK	5,623	09/30/10	10,454	06/30/10	6,018
7	3406	COORS B #3	CLEAR CREEK	2,717	05/31/10	3,056	06/30/10	3,010
7	3407	COORS B #4	CLEAR CREEK	4,000	11/30/09	4,000	11/30/09	4,000
7	3702	FAIRMOUNT	CLEAR CREEK	740	09/30/10	980	01/31/10	962
7	4030	GOLDEN RESERVOIR/WEST	CLEAR CREEK	1,094	09/30/10	1,476	10/31/10	1,476
7	4411	MAPLE GROVE	SOUTH CLEAR CREEK	895	07/31/10	1,118	04/30/10	972
7	4415	LONG LAKE RESERVOIR UPPER	RALSTON CREEK	1,088	10/31/10	1,467	04/30/10	1,088
7		OTHERS		1,463		2,395		1,708
7		TOTALS		31,762		40,980		33,976

2009-2010 RESERVOIR STORAGE SUMMARIES BY DISTRICT

WATER DISTRICT 8

WD	ID	RESERVOIR NAME	SOURCE STREAM	AMOUNT IN STORAGE (AF)				
				MINIMUM		MAXIMUM		END OF YEAR
				AF	DATE	AF	DATE	AF
8	3514	CHATFIELD	SOUTH PLATTE	20,902	09/30/10	27,573	04/30/10	21,087
8	3532	CHERRY CREEK	CHERRY CREEK	11,629	10/31/10	13,320	04/30/10	11,629
8	3832	MCLELLAN	DAD CLARK DITCH	3,466	09/01/10	5,885	03/01/10	3,627
8	3983	STRONTIA SPRINGS DVR DAM	SOUTH PLATTE	6,854	11/30/09	7,481	03/31/10	7,312
8	4097	SOUTH PLATTE LAKE	SOUTH PLATTE	4,402	11/30/09	6,389	04/30/10	4,943
8		TOTALS		47,253		60,648		48,598

2009-2010 RESERVOIR STORAGE SUMMARIES BY DISTRICT

WATER DISTRICT 9

WD	ID	RESERVOIR NAME	SOURCE STREAM	AMOUNT IN STORAGE (AF)				
				MINIMUM		MAXIMUM		END OF YEAR
				AF	DATE	AF	DATE	AF
9	3501	MARSTON	SOUTH PLATTE	13,192	09/30/10	19,499	04/30/10	14,036
9	3815	SODA #1, #2	BEAR CREEK	1,083	10/31/10	1,450	05/31/10	1,083
9	3999	BEAR CREEK RESERVOIR	BEAR CREEK	1,860	03/31/10	2,091	04/30/10	1,865
9	4281	BOWLES	BEAR CREEK	682	10/31/10	1,755	11/30/09	682
9	4314	PATRICK	BEAR CREEK	1,031	10/31/10	1,161	11/30/09	1,031
9		OTHERS		2,236		3,525		2,400
9		TOTALS		20,084		29,481		21,097

2009-2010 RESERVOIR STORAGE SUMMARIES BY DISTRICT

WATER DISTRICT 23

WD	ID	RESERVOIR NAME	SOURCE STREAM	AMOUNT IN STORAGE (AF)				
				MINIMUM		MAXIMUM		END OF YEAR
				AF	DATE	AF	DATE	AF
23	3904	ANTERO	S FK SOUTH PLATTE	19,305	09/30/10	20,169	07/31/10	19,604
23	3962	MONTGOMERY	MID FK SOUTH PLATTE	65	04/30/10	4906	07/31/10	2,842
23	3965	ELEVEN MILE	MID FK SOUTH PLATTE	99,109	05/31/10	100,934	04/30/10	99,864
23	3981	JEFFERSON LAKE RESERVOIR	JEFFERSON LAKE	568	09/30/10	1,538	06/30/10	595
23	4013	SPINNEY MOUNTAIN	MID FK SOUTH PLATTE	38,658	02/28/10	52,663	06/30/10	41,116
23	4016	JAMES TINGLE RESEROIVR	MICHIGAN CREEK	251	10/31/10	401	05/31/10	251
23		TOTALS		157,956		180,611		164,272

2009-2010 RESERVOIR STORAGE SUMMARIES BY DISTRICT

WATER DISTRICT 64

WD	ID	RESERVOIR NAME	SOURCE STREAM	AMOUNT IN STORAGE (AF)				
				MINIMUM		MAXIMUM		END OF YEAR
				AF	DATE	AF	DATE	AF
64	3551	NORTH STERLING	SOUTH PLATTE	15,601	9/30/10	74,444	03/01/10	22,392
64	3552	PREWITT	SOUTH PLATTE	19,104	10/31/10	28,597	03/31/10	19,104
64	3906	JULESBURG	SOUTH PLATTE	8,568	09/30/10	22,814	03/31/10	12,345
64		TOTALS		43,273		125,855		53,841

2009-2010 RESERVOIR STORAGE SUMMARIES BY DISTRICT

WATER DISTRICT 80

WD	ID	RESERVOIR NAME	SOURCE STREAM	AMOUNT IN STORAGE (AF)				
				MINIMUM		MAXIMUM		END OF YEAR
				AF	DATE	AF	DATE	AF
80	3550	CHEESMAN	S FK SOUTH PLATTE	58,617	02/28/10	78,080	06/30/10	77,501
80	3658	LININGER RESERVOIR	BEAVER CREEK	462	10/01/10	494	08/01/10	462
80	3828	ALTURA RESERVOIR	GENEVA CREEK	0	11/01/09	430	05/04/10	0
80	3829	WELLINGTON	N FK SOUTH PLATTE	2,677	09/30/10	4,399	05/31/10	2,677
80		TOTAL		61,756		83,403		80,640

Table 5 – Water Diversion Summaries

WATER DIVERSION SUMMARIES 2009-2010

WD	STRUCTURES REPORTING				ESTIMATED NUMBER OF STRUCTURE VISITS	TOTAL DIVERSIONS (AF)	TOTAL DIVERSIONS TO STORAGE	TO IRRIGATION		
	WITH RECORD	NO WATER AVAIL.	NO WATER TAKEN	NO INFO AVAIL.				TOTAL DIVERSIONS (AF)	NO. OF ACRES IRRIGATED	AVG AF PER ACRE
1	659	12	152	235	24,450	1,142,519	140,602	426,617	0	0
2	291	0	69	85	23,293	852,119	140,007	388,525	0	0
3	321	0	21	25	36,545	1,192,033	284,140	400,624	0	0
4	105	0	6	52	7,615	473,314	64,979	115,665	0	0
5	102	0	23	43	10,183	145,464	6,852	106,824	0	0
6	127	0	28	75	12,105	265,412	67,971	80,200	0	0
7	100	0	1	0	11,880	178,978	8,338	31,959	0	0
8	523	56	147	123	8,212	525,824	114,828	27,080	0	0
9	55	6	12	13	908	15,629	2,055	9,953	0	0
23	141	0	29	27	6,244	113,992	92,549	15,755	0	0
48	51	0	5	0	3,168	23,082	0	22,750	0	0
49	1	0	5	0	192	1,322	0	1,322	0	0
64	975	6	188	101	18,437	695,504	148,734	317,714	0	0
65	10	0	12	0	1,289	15,315	0	556	0	0
76	0	0	0	0	0	0	0	0	0	0
80	100	5	10	15	2,292	61,844	49,389	10,946	0	0
TOT	3,561	85	708	794	166,813	5,702,351	1,120,444	1,956,490	0	0

WATER DIVERSION SUMMARIES TO VARIOUS USES 2009-2010

WD	TRANS-MOUNTAIN OUTFLOW	TRANS-BASIN OUTFLOW	EXPORT FROM STATE	MUNICIPAL	COMMERCIAL	INDUSTRIAL	RECREATION	FISHERY	FIRE	DOMESTIC & HOUSEHOLD USE ONLY	OTHER	STOCK
1	0	0	0	2771	2119	12084	64	0	0	88	0	127
2	0	0	0	87084	791	4641	0	0	0	0	0	10
3	0	6353	0	61743	22	5248	0	0	0	70	0	0
4	0	0	0	41577	39	0	0	0	0	3	0	0
5	0	680	0	19793	6	0	0	0	0	21	0	0
6	0	6001	0	73295	44	463	0	0	0	0	0	0
7	0	31679	0	9072	0	48354	0	0	0	0	0	37
8	0	851	0	311532	77	40016	0	1988	0	387	0	0
9	0	0	0	1923	0	0	0	0	0	0	0	0
23	11763	0	0	288	0	1115	40	3620	0	10	0	143
48	306	0	0	0	0	0	0	0	0	0	0	0
49	0	0	0	0	0	0	0	0	0	0	0	0
64	0	0	0	3937	173	674	0	342	0	5	0	24
65	0	0	0	0	0	0	0	3938	0	0	0	0
76	0	0	0	0	0	0	0	0	0	0	0	0
80	0	1226	0	98	0	0	64	0	0	0	0	0
TOT	12,069	46,790	0	613,113	3,271	112,595	168	9,888	0	584	0	341

WD	AUGMENTATION	EVAPORATION	FEDERAL RESERVE	GEOTHERMAL	SNOWMAKING	MINIMUM STREAMFLOW	POWER GENERATION	WILDLIFE	RECHARGE	ALL BENEFICIAL USE
1	6360	23	0	0	0	0	0	0	158253	0
2	68421	98	0	0	0	0	0	0	9432	0
3	20700	7313	0	0	0	0	0	0	2729	0
4	623	0	0	0	0	0	125621	0	1596	0
5	15829	0	0	0	0	1004	0	0	0	0
6	1585	0	0	0	0	11474	6831	0	0	0
7	19282	418	0	0	64	0	0	0	1895	0
8	5259	2663	0	0	0	0	0	0	2589	0
9	93	268	0	0	0	0	0	0	0	0
23	2468	0	0	0	0	0	0	0	163	0
48	0	0	0	0	0	0	0	0	0	0
49	0	0	0	0	0	0	0	0	0	0
64	524	33	0	0	0	0	0	0	110221	0
65	0	0	0	0	0	0	0	0	0	0
76	0	0	0	0	0	0	0	0	0	0
80	673	0	0	0	0	0	0	0	0	0
TOT	141,817	10,816	0	0	64	12,478	132,452	0	286,878	0

Table 6 – Augmentation Releases

Figure 2 - Augmentation Releases by Water District
2010
Augmentation Releases

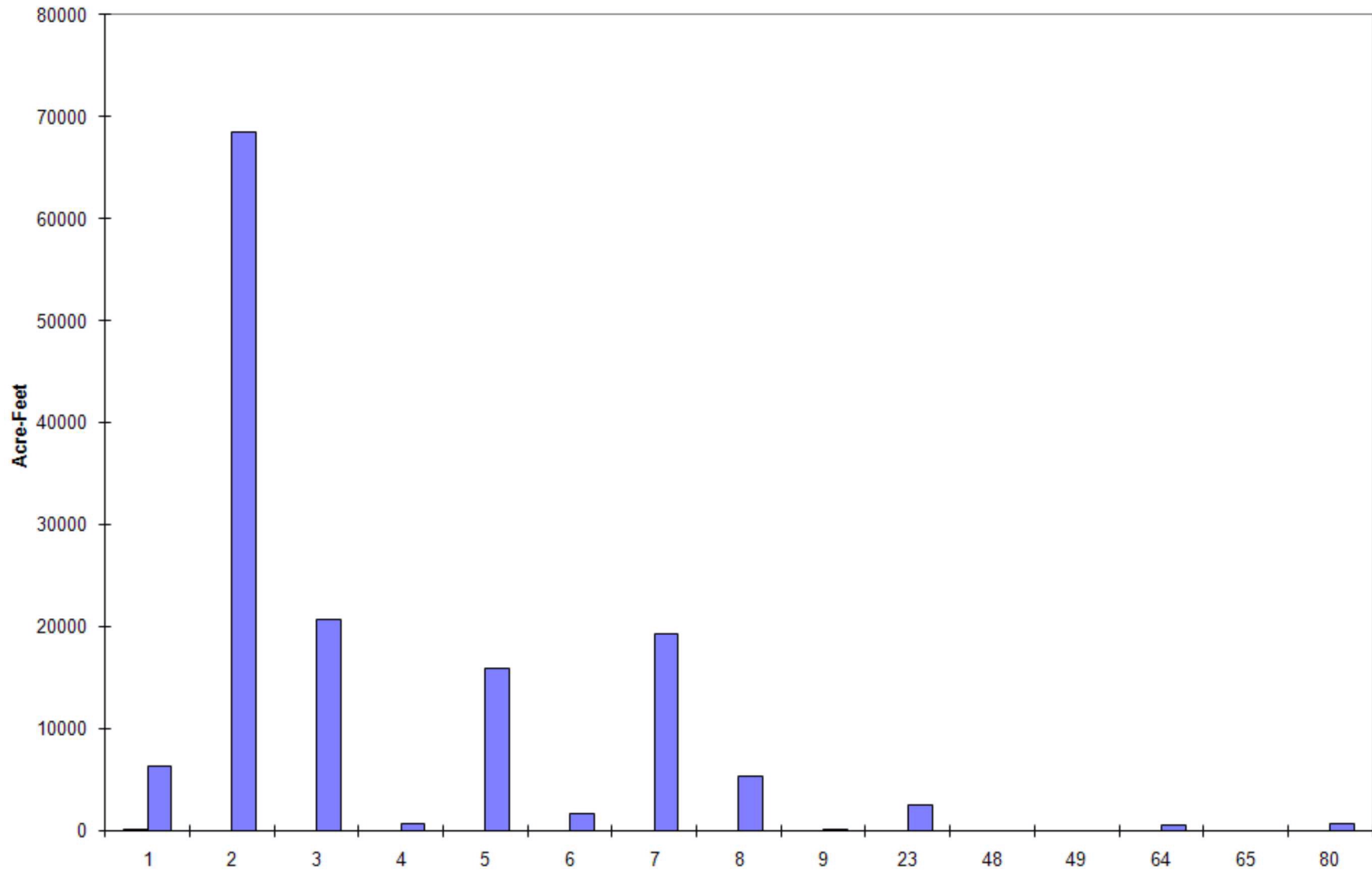


Table 7 – Water Court Activities

WATER COURT ACTIVITIES
Calendar Year 2010

New Applications made to water court this year.....319
 Referee Rulings Reviewed.....545
 Decrees Issued by Court this year.....659
 Dismissals.....37

TYPES OF RULINGS

TYPE OF RULING	NUMBER OF CASES	NUMBER OF STRUCTURES
Findings of Diligence on Conditional Rights	127	220
Exchanges Adjudicated	14	35
Conditional Rights Made Absolute	22	43
Conditional Rights Cancelled	50	74
Surface Water Rights Adjudicated	8	15
Underground Water Rights Adjudicated	374	1263
Water Storage Rights Adjudicated	19	41
Plans for Augmentation Adjudicated	65	138
Changes of Water Rights Adjudicated	40	110
Withdrawn	10	11
Recharge Sites	2	21
Corrected Decrees	18	69
Removal from Abandonment Case	1	1
Terminate Water Rights	2	2

Table 8 – Main Stem Call Record

CALLING PRIORITY 2009-2010

Start Date	End Date	Water Source	WDID	Structure Name	Appro Date	Admin No	Decreed Amt	Districts Affected	Set Comments
2010-02-11 08:00	2010-02-23 08:00	SOUTH PLATTE RIVER	100503	RIVERSIDE CANAL	1905-05-18	26302.20226	612.4800 CFS	1,2,3,4, 5,6,7	BYPASS CALL FROM 0100501 - EMPIRE DITCH
2010-02-11 08:00	2010-02-22 08:00	SOUTH PLATTE RIVER	200802	BURLINGTON D RIVER HG	1909-01-13	21562.00000	900.0000 CFS	2,8,9,23 ,80	
2010-02-22 08:00	2010-02-23 08:00	SOUTH PLATTE RIVER	200802	BURLINGTON D RIVER HG	1910-11-21	22239.00000	500.0000 CFS	2,8,9,23 ,80	PROSPECT RESERVOIR
2010-02-23 08:00	2010-03-01 08:00	SOUTH PLATTE RIVER	100503	RIVERSIDE CANAL	1905-05-18	26302.20226	612.4800 CFS	1,2,3,4, 5,6,7,8, 9,23,80	BYPASS CALL FROM 0100501 - EMPIRE DITCH
2010-03-01 08:00	2010-03-04 12:00	SOUTH PLATTE RIVER	100513	JACKSON LAKE INLET DITCH	1905-05-18	26302.20226	612.4800 CFS	1,2,3,4, 5,6,7,8, 9,23,80	BYPASS CALL FROM 0100501 - EMPIRE DITCH
2010-04-19 08:00	2010-04-20 08:00	SOUTH PLATTE RIVER	100518	LOWER PLATTE BEAVER D	1909-05-29	21698.00000	510.0000 CFS	1,2,3,4, 5,6,7,8, 9,80	BYPASS CALL FROM 0200817 - EVANS NO 2 DITCH (MILTON RES.)
2010-04-20 08:00	2010-04-22 08:00	SOUTH PLATTE RIVER	100518	LOWER PLATTE BEAVER D	1908-03-09	21252.00000	600.0000 CFS	1,2,3,4, 5,6,7,8, 9,80	BYPASS CALL FROM 0200802 - BURLINGTON D RIVER HG
2010-06-04 08:00	2010-06-08 08:00	SOUTH PLATTE RIVER	200802	BURLINGTON D RIVER HG	1910-12-06	22254.00000	85.4400 CFS	2,8,9,80 ,23	BYPASS CALL FROM 0801002 - DENVER CONDUIT NO 20
2010-06-08 08:00	2010-06-10 08:00	SOUTH PLATTE RIVER	200802	BURLINGTON D RIVER HG	1962-03-21	47481.40987	774.0000 CFS	2,8,9,80 ,23	BYPASS CALL FROM 0801017 - DENVER FOOTHILLS PL 26
2010-06-10 08:00	2010-06-11 08:00	SOUTH PLATTE RIVER	200802	BURLINGTON D RIVER HG	1910-12-06	22254.00000	85.4400 CFS	2,8,9,23 ,80	BYPASS CALL FROM 0801002 - DENVER CONDUIT NO 20
2010-06-23 08:00	2010-06-26 08:00	SOUTH PLATTE RIVER	200802	BURLINGTON D RIVER HG	1962-03-21	47481.40987	774.0000 CFS	2,8,9,23 ,80	BYPASS CALL FROM 0801017 - DENVER FOOTHILLS PL 26
2010-06-26 08:00	2010-06-29 08:00	SOUTH PLATTE RIVER	200825	HEWES COOK DITCH	1909-06-09	21709.00000	215.9500 CFS	2,7,8,9, 23,80	BYPASS CALL FROM 0200817 - EVANS NO 2 DITCH

CALLING PRIORITY 2009-2010 (Continued)

Start Date	End Date	Water Source	WDID	Structure Name	Appro Date	Admin No	Decreed Amt	Districts Affected	Set Comments
2010-06-28 08:00	2010-06-30 08:00	SOUTH PLATTE RIVER	100687	NORTH STERLING CANAL	1914-05-27	26302.23522	460.0000 CFS	1,2,3,4,5,6	
2010-06-29 08:00	2010-06-30 08:00	SOUTH PLATTE RIVER	200825	HEWES COOK DITCH	1908-03-09	21252.00000	600.0000 CFS	2,7,8,9,23,80	BYPASS CALL FROM 0200802 - BURLINGTON D RIVER HG
2010-06-30 07:35	2010-07-01 08:00	SOUTH PLATTE RIVER	200825	HEWES COOK DITCH	1899-05-01	18018.00000	76.1600 CFS	2,7,8,9,23,80	BYPASS CALL FROM 0801002 - DENVER CONDUIT NO 20
2010-06-30 08:00	2010-07-01 08:00	SOUTH PLATTE RIVER	6400528	STERLING IRR CO DITCH 1	1914-05-27	26302.23522	460.0000 CFS	1,2,3,4,5,6,64	BYPASS CALL FROM 0100687 - NORTH STERLING CANAL
2010-07-01 08:00	2010-07-02 08:00	SOUTH PLATTE RIVER	100514	FT MORGAN CANAL	1907-05-31	20969.00000	417.0000 CFS	1,2,3,4,5,6	BYPASS CALL FROM 0100503 - RIVERSIDE CANAL
2010-07-01 08:00	2010-07-04 08:00	SOUTH PLATTE RIVER	100687	NORTH STERLING CANAL	1914-05-27	26302.23522	460.0000 CFS	1	
2010-07-01 08:00	2010-07-04 08:00	SOUTH PLATTE RIVER	200825	HEWES COOK DITCH	1885-11-20	13108.00000	350.0000 CFS	2,7,8,9,23,80	BYPASS CALL FROM 0200802 - BURLINGTON D RIVER HG
2010-07-02 08:00	2010-07-03 08:00	SOUTH PLATTE RIVER	100514	FT MORGAN CANAL	1888-10-01	14154.00000	450.0000 CFS	1,2,3,4,5,6	BYPASS CALL FROM 0100507 - BIJOU CANAL
2010-07-03 08:00	2010-07-04 08:00	SOUTH PLATTE RIVER	100518	LOWER PLATTE BEAVER D	1888-04-15	13985.00000	284.0000 CFS	1,2,3,4,5,6	
2010-07-04 08:00	2010-07-05 08:00	SOUTH PLATTE RIVER	6400533	PAWNEE DITCH	1888-04-15	13985.00000	284.0000 CFS	1,2,3,4,5,6,64	BYPASS CALL FROM 0100518 - LOWER PLATTE BEAVER D
2010-07-04 08:00	2010-07-05 08:00	SOUTH PLATTE RIVER	200825	HEWES COOK DITCH	1876-11-20	9821.00000	85.4000 CFS	2,7,8,9,23,80	BYPASS CALL FROM 0200824 - FARMERS INDEPENDENT D
2010-07-05 08:00	2010-07-06 08:00	SOUTH PLATTE RIVER	6400533	PAWNEE DITCH	1907-05-31	20969.00000	417.0000 CFS	1,2,3,4,5,6,7,8,9,23,64,80	BYPASS CALL FROM 0100503 - RIVERSIDE CANAL
2010-07-06 08:00	2010-07-09 08:00	SOUTH PLATTE RIVER	6400511	HARMONY DITCH 1	1914-05-27	26302.23522	460.0000 CFS	1,2,3,4,5,6,7,8,9,23,64,80	BYPASS CALL FROM 0100687 - NORTH STERLING CANAL

CALLING PRIORITY 2009-2010 (Continued)

Start Date	End Date	Water Source	WDID	Structure Name	Appro Date	Admin No	Decreed Amt	Districts Affected	Set Comments
2010-07-09 08:00	2010-07-12 08:00	SOUTH PLATTE RIVER	6400511	HARMONY DITCH 1	1914-05-27	26302.23522	460.0000 CFS	1,2,3,4,5,6, 64	BYPASS CALL FROM 0100687 - NORTH STERLING CANAL TO JID 1904
2010-07-09 08:00	2010-07-12 08:00	SOUTH PLATTE RIVER	200825	HEWES COOK DITCH	1908-03-09	21252.00000	600.0000 CFS	2,7,8,9,23,8 0	BYPASS CALL FROM 0200802 - BURLINGTON D RIVER HG
2010-07-12 08:00	2010-07-17 08:00	SOUTH PLATTE RIVER	6400511	HARMONY DITCH 1	1904-02-12	19765.00000	450.0000 CFS	1,2,3,4,5,6, 64	JID 1904 RIGHT
2010-07-12 08:00	2010-07-14 08:00	SOUTH PLATTE RIVER	200825	HEWES COOK DITCH	1885-11-20	13108.00000	350.0000 CFS	2,7,8,9,23,8 0	BYPASS CALL FROM 0200802 - BURLINGTON D RIVER HG
2010-07-14 08:00	2010-07-15 08:00	SOUTH PLATTE RIVER	200825	HEWES COOK DITCH	1876-07-08	9686.00000	74.2500 CFS	2,7,8,9,23,8 0	BYPASS CALL FROM 0200808 - FULTON DITCH
2010-07-15 08:00	2010-07-16 08:00	SOUTH PLATTE RIVER	200825	HEWES COOK DITCH	1873-09-15	8659.00000	92.8700 CFS	2,7,8,9,23,8 0	BYPASS CALL FROM 0200812 - LUPTON BOTTOM DITCH
2010-07-16 08:00	2010-07-18 08:00	SOUTH PLATTE RIVER	200825	HEWES COOK DITCH	1871-10-05	7948.00000	177.0700 CFS	2,7,8,9,23,8 0	BYPASS CALL FROM 0200817 - EVANS NO 2 DITCH
2010-07-17 08:00	2010-07-23 08:00	SOUTH PLATTE RIVER	6400528	STERLING IRR CO DITCH 1	1888-04-15	13985.00000	284.0000 CFS	1,2,3,4,5,6, 64	BYPASS CALL FROM 0100518 - LOWER PLATTE BEAVER D
2010-07-17 08:00	2010-07-22 08:00	SOUTH PLATTE RIVER	6400511	HARMONY DITCH 1	1904-02-12	19765.00000	450.0000 CFS	64	JID 1904 RIGHT
2010-07-18 08:00	2010-07-19 08:00	SOUTH PLATTE RIVER	200825	HEWES COOK DITCH	1871-08-10	7892.00000	69.8770 CFS	2,7,8,9,23,8 0	
2010-07-19 08:00	2010-07-22 08:00	SOUTH PLATTE RIVER	200825	HEWES COOK DITCH	1871-10-05	7948.00000	177.0700 CFS	2,7,8,9,23,8 0	BYPASS CALL FROM 0200817 - EVANS NO 2 DITCH
2010-07-22 08:00	2010-07-23 08:00	SOUTH PLATTE RIVER	200825	HEWES COOK DITCH	1885-11-20	13108.00000	350.0000 CFS	2,7,8,9,23,8 0	BYPASS CALL FROM 0200802 - BURLINGTON D RIVER HG

CALLING PRIORITY 2009-2010 (Continued)

Start Date	End Date	Water Source	WDID	Structure Name	Appro Date	Admin No	Decreed Amt	Districts Affected	Set Comments
2010-07-23 08:00	2010-07-24 08:00	SOUTH PLATTE RIVER	200825	HEWES COOK DITCH	1876-11-20	9821.00000	85.4000 CFS	2,7,8,9,23,8 0	BYPASS CALL FROM 0200824 - FARMERS INDEPENDENT D
2010-07-23 08:00	2010-07-29 08:00	SOUTH PLATTE RIVER	100515	UPPER PLATTE BEAVER CNL	1888-04-15	13985.00000	164.0000 CFS	1,2,3,4,5,6	
2010-07-23 08:00	2010-07-25 08:00	SOUTH PLATTE RIVER	6400528	STERLING IRR CO DITCH 1	1902-01-17	19009.00000	175.0000 CFS	1, 64	BYPASS CALL FROM 0100519 - TREMONT DITCH
2010-07-24 07:38	2010-07-25 08:00	SOUTH PLATTE RIVER	200825	HEWES COOK DITCH	1885-11-20	13108.00000	350.0000 CFS	2,7,8,9,23,8 0	BYPASS CALL FROM 0200802 - BURLINGTON D RIVER HG
2010-07-25 08:00	2010-07-26 08:00	SOUTH PLATTE RIVER	100519	TREMONT DITCH	1902-01-17	19009.00000	175.0000 CFS	1	
2010-07-25 08:00	2010-07-31 08:00	SOUTH PLATTE RIVER	200825	HEWES COOK DITCH	1871-10-05	7948.00000	177.0700 CFS	2,7,8,9,23,8 0	BYPASS CALL FROM 0200817 - EVANS NO 2 DITCH
2010-07-26 08:00	2010-07-29 08:00	SOUTH PLATTE RIVER	6400528	STERLING IRR CO DITCH 1	1902-01-17	19009.00000	175.0000 CFS	1,64	BYPASS CALL FROM 0100519 - TREMONT DITCH
2010-07-29 08:00	2010-07-31 09:25	SOUTH PLATTE RIVER	100514	FT MORGAN CANAL	1882-10-18	11979.00000	323.0000 CFS	1,2,3,4,5,6	
2010-07-29 08:00	2010-08-02 08:00	SOUTH PLATTE RIVER	6400528	STERLING IRR CO DITCH 1	1888-04-15	13985.00000	284.0000 CFS	1, 64	BYPASS CALL FROM 0100518 - LOWER PLATTE BEAVER D
2010-07-31 08:00	2010-08-02 08:00	SOUTH PLATTE RIVER	100514	FT MORGAN CANAL	1882-10-18	11979.00000	323.0000 CFS	1,2,3,4,5,6,7 ,8,9,23,80	
2010-08-02 08:00	2010-08-03 08:00	SOUTH PLATTE RIVER	6400528	STERLING IRR CO DITCH 1	1888-04-15	13985.00000	284.0000 CFS	1,2,3,4,5,6,6 4	BYPASS CALL FROM 0100518 - LOWER PLATTE BEAVER D
2010-08-02 08:00	2010-08-03 08:00	SOUTH PLATTE RIVER	200825	HEWES COOK DITCH	1876-07-08	9686.00000	74.2500 CFS	2,7,8,9,23,8 0	BYPASS CALL FROM 0200808 - FULTON DITCH
2010-08-03 08:00	2010-08-05 08:00	SOUTH PLATTE RIVER	6400528	STERLING IRR CO DITCH 1	1888-04-15	13985.00000	284.0000 CFS	1,2,3,4,5,6,7 ,8,9,23,64,8 0	BYPASS CALL FROM 0100518 - LOWER PLATTE BEAVER D

CALLING PRIORITY 2009-2010 (Continued)

Start Date	End Date	Water Source	WDID	Structure Name	Appro Date	Admin No	Decreed Amt	Districts Affected	Set Comments
2010-08-05 08:00	2010-08-06 08:00	SOUTH PLATTE RIVER	6400511	HARMONY DITCH 1	1909-01-13	21562.00000	900.0000 CFS	1,2,3,4,5,6,7,8,9,23,64,80	BYPASS CALL FROM 0200802 - BURLINGTON D RIVER HG
2010-08-06 08:00	2010-08-08 08:00	SOUTH PLATTE RIVER	6499999	SOUTH PLATTE RIVER COMPACT	1897-06-14	17332.00000	120.0000 CFS	64	ALL RIGHTS IN DISTRICT 64 REGULATED PER COMPACT
2010-08-06 08:00	2010-08-08 08:00	SOUTH PLATTE RIVER	6400511	HARMONY DITCH 1	1909-01-13	21562.00000	900.0000 CFS	1,2,3,4,5,6,7,8,9,23,80	BYPASS CALL FROM 0200802 - BURLINGTON D RIVER HG
2010-08-08 08:00	2010-08-10 08:00	SOUTH PLATTE RIVER	6499999	SOUTH PLATTE RIVER COMPACT	1989-05-02	51134.50891	65.0000 CFS	64	BYPASS CALL FROM 6400504 - PETERSON DITCH
2010-08-08 08:00	2010-08-09 08:00	SOUTH PLATTE RIVER	6400528	STERLING IRR CO DITCH 1	1907-05-31	20969.00000	417.0000 CFS	1,2,3,4,5,6,64	BYPASS CALL FROM 0100503 - RIVERSIDE CANAL
2010-08-08 08:00	2010-08-09 08:00	SOUTH PLATTE RIVER	200825	HEWES COOK DITCH	1885-11-20	13108.00000	350.0000 CFS	2,7,8,9,23,80	BYPASS CALL FROM 0200802 - BURLINGTON D RIVER HG
2010-08-09 08:00	2010-08-10 08:00	SOUTH PLATTE RIVER	6400528	STERLING IRR CO DITCH 1	1909-01-13	21562.00000	900.0000 CFS	1,2,3,4,5,6,7,8,9,23,64,80	BYPASS CALL FROM 0200802 - BURLINGTON D RIVER HG
2010-08-10 08:00	2010-08-11 08:00	SOUTH PLATTE RIVER	200802	BURLINGTON D RIVER HG	1911-04-01	22370.00000	308.0000 CFS	2,8,9,23,80	BYPASS CALL FROM 0801002 - DENVER CONDUIT NO 20
2010-08-11 08:00	2010-08-12 08:00	SOUTH PLATTE RIVER	200825	HEWES COOK DITCH	1909-01-13	21562.00000	900.0000 CFS	2,7,8,9,23,80	BYPASS CALL FROM 0200802 - BURLINGTON D RIVER HG
2010-08-12 08:00	2010-08-13 08:00	SOUTH PLATTE RIVER	200825	HEWES COOK DITCH	1885-11-20	13108.00000	350.0000 CFS	2,7,8,9,23,80	BYPASS CALL FROM 0200802 - BURLINGTON D RIVER HG
2010-08-13 08:00	2010-08-14 08:00	SOUTH PLATTE RIVER	200825	HEWES COOK DITCH	1879-01-18	10610.00000	600.0000 CFS	2,7,8,9,23,80	BYPASS CALL FROM 0801004 - HIGHLINE CNL
2010-08-14 08:00	2010-08-16 08:00	SOUTH PLATTE RIVER	200825	HEWES COOK DITCH	1871-10-05	7948.00000	177.0700 CFS	2,7,8,9,23,80	BYPASS CALL FROM 0200817 - EVANS NO 2 DITCH

CALLING PRIORITY 2009-2010 (Continued)

Start Date	End Date	Water Source	WDID	Structure Name	Appro Date	Admin No	Decreed Amt	Districts Affected	Set Comments
2010-08-14 08:00	2010-08-15 08:00	SOUTH PLATTE RIVER	100514	FT MORGAN CANAL	1907-05-31	20969.00000	417.0000 CFS	1,2,3,4,5,6	BYPASS CALL FROM 0100503 - RIVERSIDE CANAL
2010-08-15 08:00	2010-08-22 08:00	SOUTH PLATTE RIVER	100515	UPPER PLATTE BEAVER CNL	1888-10-01	14154.00000	450.0000 CFS	1,2,3,4,5,6	BYPASS CALL FROM 0100507 - BIJOU CANAL
2010-08-16 08:00	2010-08-17 08:00	SOUTH PLATTE RIVER	200825	HEWES COOK DITCH	1876-07-08	9686.00000	74.2500 CFS	2,7,8,9,23,80	BYPASS CALL FROM 0200808 - FULTON DITCH
2010-08-17 08:00	2010-08-19 08:00	SOUTH PLATTE RIVER	200825	HEWES COOK DITCH	1881-01-15	11338.00000	63.3000 CFS	2,7,8,9,23,80	BYPASS CALL FROM 0200809 - BRANTNER DITCH
2010-08-19 08:00	2010-08-20 08:00	SOUTH PLATTE RIVER	200825	HEWES COOK DITCH	1876-11-20	9821.00000	85.4000 CFS	2,7,8,9,23,80	BYPASS CALL FROM 0200824 - FARMERS INDEPENDENT D
2010-08-20 08:00	2010-08-21 08:00	SOUTH PLATTE RIVER	200825	HEWES COOK DITCH	1873-10-15	8689.00000	94.2500 CFS	2,7,8,9,23,80	BYPASS CALL FROM 0200813 - PLATTEVILLE DITCH
2010-08-21 08:00	2010-08-23 08:00	SOUTH PLATTE RIVER	200825	HEWES COOK DITCH	1876-07-08	9686.00000	74.2500 CFS	2,7,8,9,23,80	BYPASS CALL FROM 0200808 - FULTON DITCH
2010-08-22 08:00	2010-08-28 08:00	SOUTH PLATTE RIVER	6400528	STERLING IRR CO DITCH 1	1888-04-15	13985.00000	284.0000 CFS	1,2,3,4,5,6,64	BYPASS CALL FROM 0100518 - LOWER PLATTE BEAVER D
2010-08-23 08:00	2010-09-03 08:00	SOUTH PLATTE RIVER	200825	HEWES COOK DITCH	1871-10-05	7948.00000	177.0700 CFS	2,7,8,9,23,80	BYPASS CALL FROM 0200817 - EVANS NO 2 DITCH
2010-08-28 08:00	2010-09-04 08:00	SOUTH PLATTE RIVER	6400528	STERLING IRR CO DITCH 1	1886-07-19	13349.00000	62.2750 CFS	1,2,3,4,5,6,64	BYPASS CALL FROM 6400530 - SPRINGDALE DITCH
2010-09-03 08:00	2010-09-10 08:00	SOUTH PLATTE RIVER	200825	HEWES COOK DITCH	1871-08-10	7892.00000	69.8770 CFS	2,7,8,9,23,80	
2010-09-04 08:00	2010-09-06 08:00	SOUTH PLATTE RIVER	6400528	STERLING IRR CO DITCH 1	1888-04-15	13985.00000	284.0000 CFS	1,2,3,4,5,6,64	BYPASS CALL FROM 0100518 - LOWER PLATTE BEAVER D
2010-09-06 08:00	2010-09-09 08:00	SOUTH PLATTE RIVER	6400528	STERLING IRR CO DITCH 1	1902-01-17	19009.00000	175.0000 CFS	1,2,3,4,5,6,64	BYPASS CALL FROM 0100519 - TREMONT DITCH
2010-09-09 08:00	2010-09-17 08:00	SOUTH PLATTE RIVER	100507	BIJOU CANAL	1907-05-31	20969.00000	417.0000 CFS	1,2,3,4,5,6	BYPASS CALL FROM 0100503 - RIVERSIDE CANAL

CALLING PRIORITY 2009-2010 (Continued)

Start Date	End Date	Water Source	WDID	Structure Name	Appro Date	Admin No	Decreed Amt	Districts Affected	Set Comments
2010-09-09 08:00	2010-09-15 08:00	SOUTH PLATTE RIVER	6400528	STERLING IRR CO DITCH 1	1929-12-31	31423.29219	695.0000 CFS	1,64	BYPASS CALL FROM 0100829 - PREWITT INLET CANAL
2010-09-10 08:00	2010-09-27 08:00	SOUTH PLATTE RIVER	200825	HEWES COOK DITCH	1871-10-05	7948.00000	177.0700 CFS	2,7,8,9,23,80	BYPASS CALL FROM 0200817 - EVANS NO 2 DITCH
2010-09-15 08:00	2010-09-17 08:00	SOUTH PLATTE RIVER	6400528	STERLING IRR CO DITCH 1	1914-05-27	26302.23522	460.0000 CFS	1,64	BYPASS CALL FROM 0100687 - NORTH STERLING CANAL
2010-09-17 08:00	2010-09-28 08:00	SOUTH PLATTE RIVER	6400528	STERLING IRR CO DITCH 1	1914-05-27	26302.23522	460.0000 CFS	1,2,3,4,5,6,64	BYPASS CALL FROM 0100687 - NORTH STERLING CANAL
2010-09-27 08:00	2010-10-01 08:00	SOUTH PLATTE RIVER	200825	HEWES COOK DITCH	1872-07-01	8218.00000	12.1800 CFS	2,7,8,9,23,80	BYPASS CALL FROM 0200809 - BRANTNER DITCH
2010-09-28 08:00	2010-10-03 08:00	SOUTH PLATTE RIVER	100687	NORTH STERLING CANAL	1914-05-27	26302.23522	460.0000 CFS	1,2,3,4,5,6	
2010-09-28 08:00	2010-10-14 08:00	SOUTH PLATTE RIVER	6400535	SOUTH PLATTE DITCH	1977-07-23	46590.00000	15.0000 CFS	1,64	
2010-10-01 08:00	2010-10-03 08:00	SOUTH PLATTE RIVER	200825	HEWES COOK DITCH	1885-11-20	13108.00000	350.0000 CFS	2,7,8,9,23,80	BYPASS CALL FROM 0200802 - BURLINGTON D RIVER HG
2010-10-03 08:00	2010-11-01 08:00	SOUTH PLATTE RIVER	200802	BURLINGTON D RIVER HG	1909-01-13	21562.00000	900.0000 CFS	2,8,9,23,80	BARR LAKE REFILL
2010-10-03 08:00	2010-10-13 08:00	SOUTH PLATTE RIVER	100687	NORTH STERLING CANAL	1914-05-27	26302.23522	460.0000 CFS	1,2,3,4,5,6,7	
2010-10-13 08:00	2010-10-14 08:00	SOUTH PLATTE RIVER	100687	NORTH STERLING CANAL	1972-06-12	44723.00000	322.0000 CFS	1,2,3,4,5,6,7	BYPASS CALL FROM 0100518 - LOWER PLATTE BEAVER D
2010-10-14 08:00	2010-10-15 08:00	SOUTH PLATTE RIVER	100687	NORTH STERLING CANAL	1986-06-17	50403.49841	1950.0000 AF	1,2,3,4,5,6,7	BYPASS CALL FROM 0103400 - VANCIL RES
2010-10-15 08:00	2010-10-24 08:00	SOUTH PLATTE RIVER	100514	FT MORGAN CANAL	1985-03-11	50769.49378	150.0000 CFS	1,2,3,4,5,6,7	BYPASS CALL FROM 0100503 - RIVERSIDE CANAL

Table 9 – Staffing and Statistics

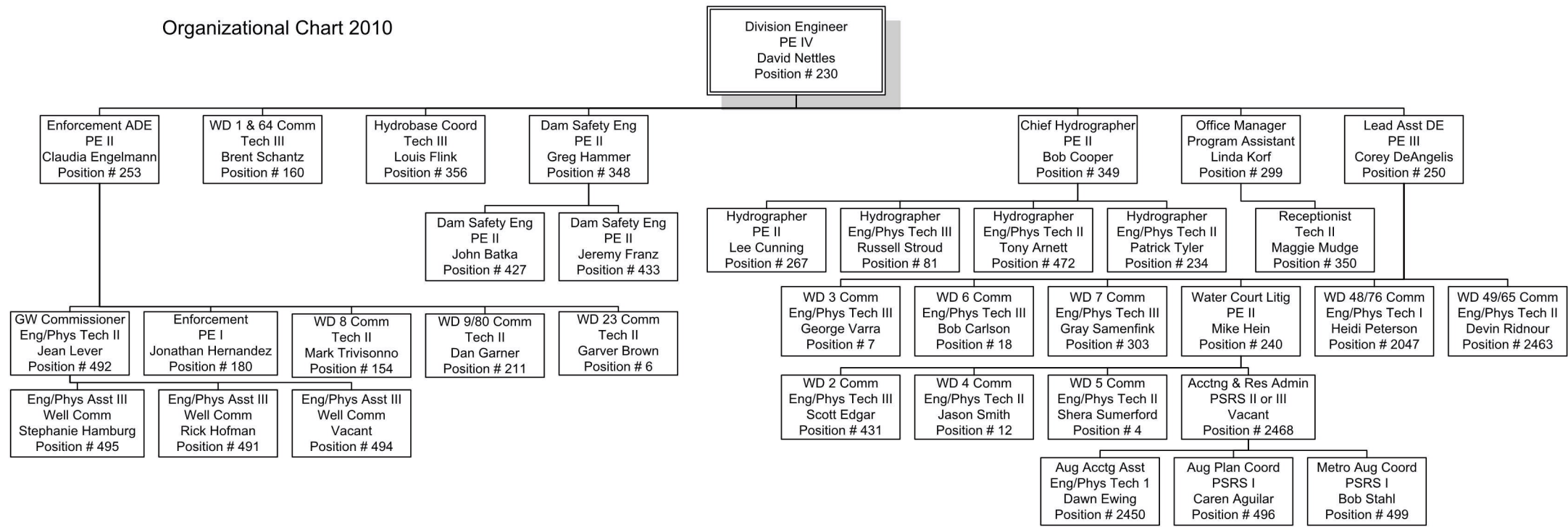
Staffing

Dam Safety Engineers	3
Water Resource Engineers	7
IT Professional	1
Engineering/Physical Science Techs/Assistants	9
Program Asst 1, & Technician II	3
Physical Science Researcher/Scientist 1	3
Full-Time Water Commissioners	22
Permanent Part-Time Water Commissioners	<u>3</u>
TOTAL STAFF	51

Statistics

Number of Well Permits	1,533
Number of Plans for Augmentation	1,039
Number of Dams routinely inspected	188
Number of Active Substitute Supply Plans	248
Number of Contacts to give Public Assistance	97,045+

Table 10 – Organizational Chart



2010 Organizational Chart for Water Commissioners

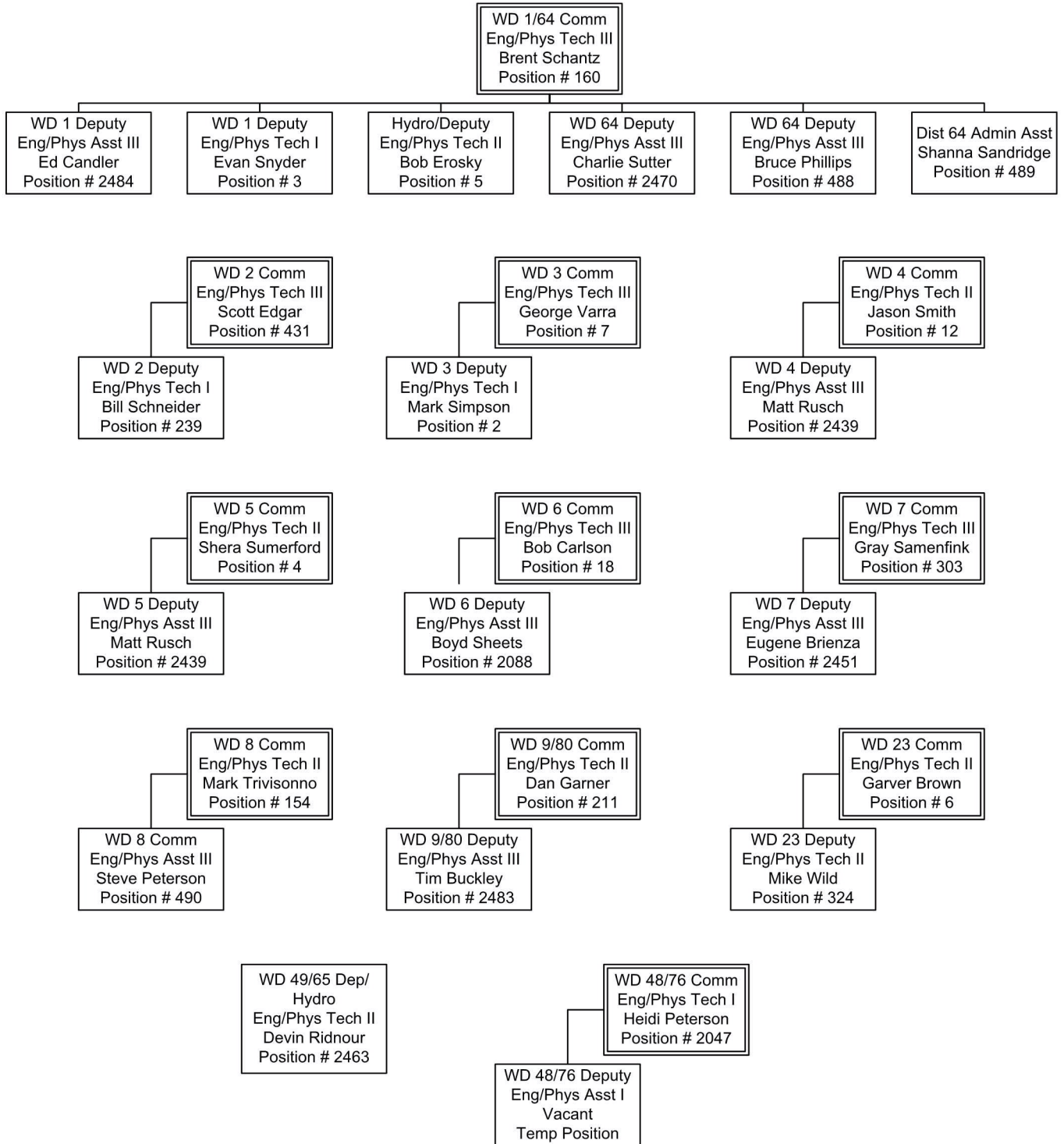


	Table					
	TOTAL DITCHES REPORTING			OTHERS		
WD	With Record	No Water Available	No Water Taken	No Info Available	No Record	Total Diversions AF
1	659	12	152	235		1142519
2	291	0	69	85		852119
3	321	0	21	25		1192033
4	105	0	6	52		473314
5	102	0	23	43		145464
6	127	0	28	75		265412
7	100	0	1	0		178978
8	523	56	147	123		525824
9	55	6	12	13		15629
23	141	0	29	27		113992
48	51	0	5	0		23082
49	1	0	5	0		1322
64	975	6	188	101		695504
65	10	0	12	0		15315
80	100	5	10	15		61844
TOT	3561	85	708	794	0	5702351

Table										
IRRIGATION										
WD	Estimated Number of Structure Visits	Diversions to Storage AF	Diversions to Irrigation AF	Acres Irrigated	Average AF per Acre	WD	Trans-mountain Outflow	Tranbasin Outflow	Mun	Comm
1	24450	140602	426617			1	0	0	2771	2119
2	23293	140007	388525			2	0	0	87084	791
3	36545	284140	400624			3	0	6353	61743	22
4	7615	64979	115665			4	0	0	41577	39
5	10183	6852	106824			5	0	680	19793	6
6	12105	67971	80200			6	0	6001	73295	44
7	11880	8338	31959			7	0	31679	9072	0
8	8212	114828	27080			8	0	851	311532	77
9	908	2055	9953			9	0	0	1923	0
23	6244	92549	15755			23	11763	0	288	0
48	3168	0	22750			48	306	0	0	0
49	192	0	1322			49	0	0	0	0
64	18437	148734	317714			64	0	0	3937	173
65	1289	0	556			65	0	0	0	0
80	2292	49389	10946			80	0	1226	98	0
TOT	166813	1120444	1956490	0	#DIV/0!	TOT	12069	46790	613113	3271

Table											
WD	Ind	Rec	Fish	Dom & HHUO	Stock	Aug	Evap	Snow	Min FI	Power	Rchg
1	12084	64	0	88	127	6360	23	0	0	0	158253
2	4641	0	0	0	10	68421	98	0	0	0	9432
3	5248	0	0	70	0	20700	7313	0	0	0	2729
4	0	0	0	3	0	623	0	0	0	125621	1596
5	0	0	0	21	0	15829	0	0	1004	0	0
6	463	0	0	0	0	1585	0	0	11474	6831	0
7	48354	0	0	0	37	19282	418	64	0	0	1895
8	40016	0	1988	387	0	5259	2663	0	0	0	2589
9	0	0	0	0	0	93	268	0	0	0	0
23	1115	40	3620	10	143	2468	0	0	0	0	163
48	0	0	0	0	0	0	0	0	0	0	0
49	0	0	0	0	0	0	0	0	0	0	0
64	674	0	342	5	24	524	33	0	0	0	110221
65	0	0	3938	0	0	0	0	0	0	0	0
80	0	64	0	0	0	673	0	0	0	0	0
TOT	112595	168	9888	584	341	141817	10816	64	12478	132452	286878