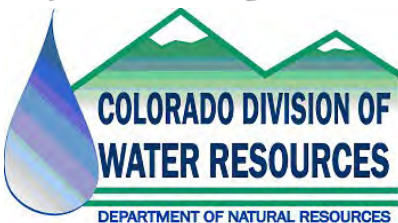


South Platte Summary

September 2006



By David Ellington



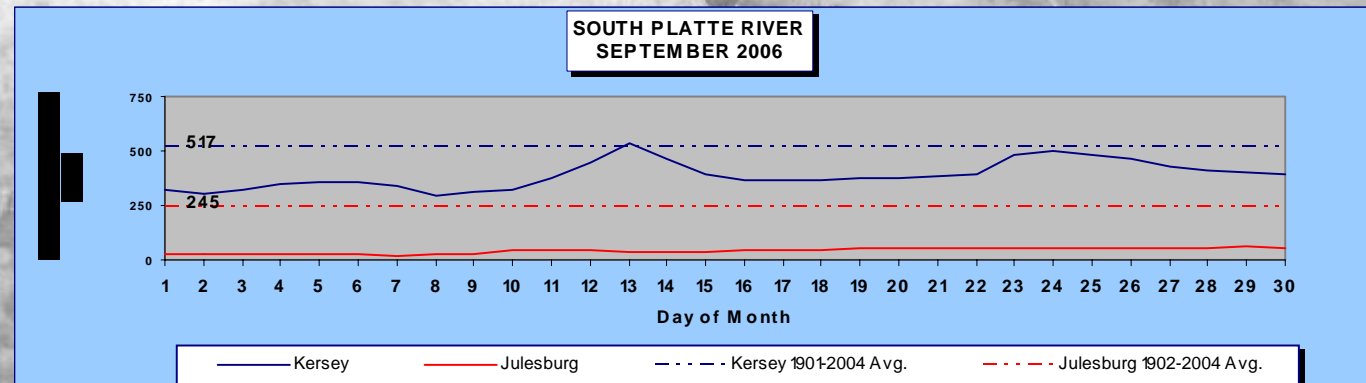
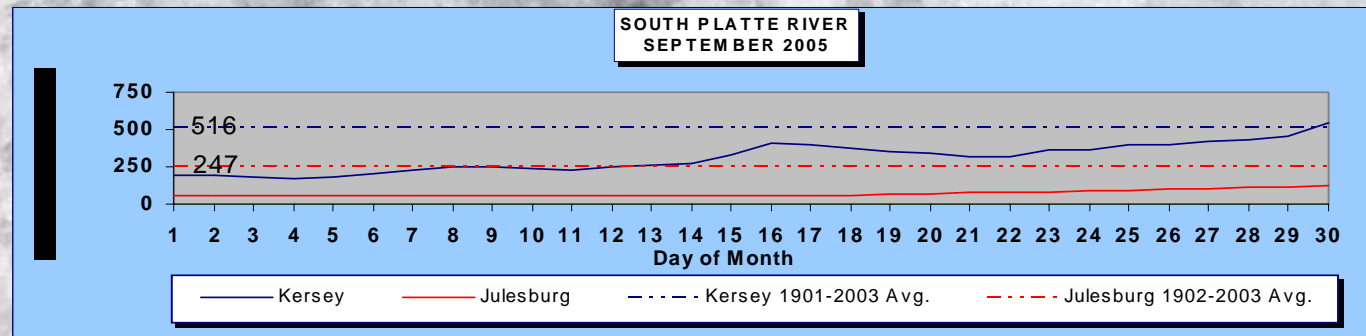
Jasper Lake Reservoir
(photo by Greg Hammer)

COLORADO DIVISION OF WATER RESOURCES, DIVISION 1

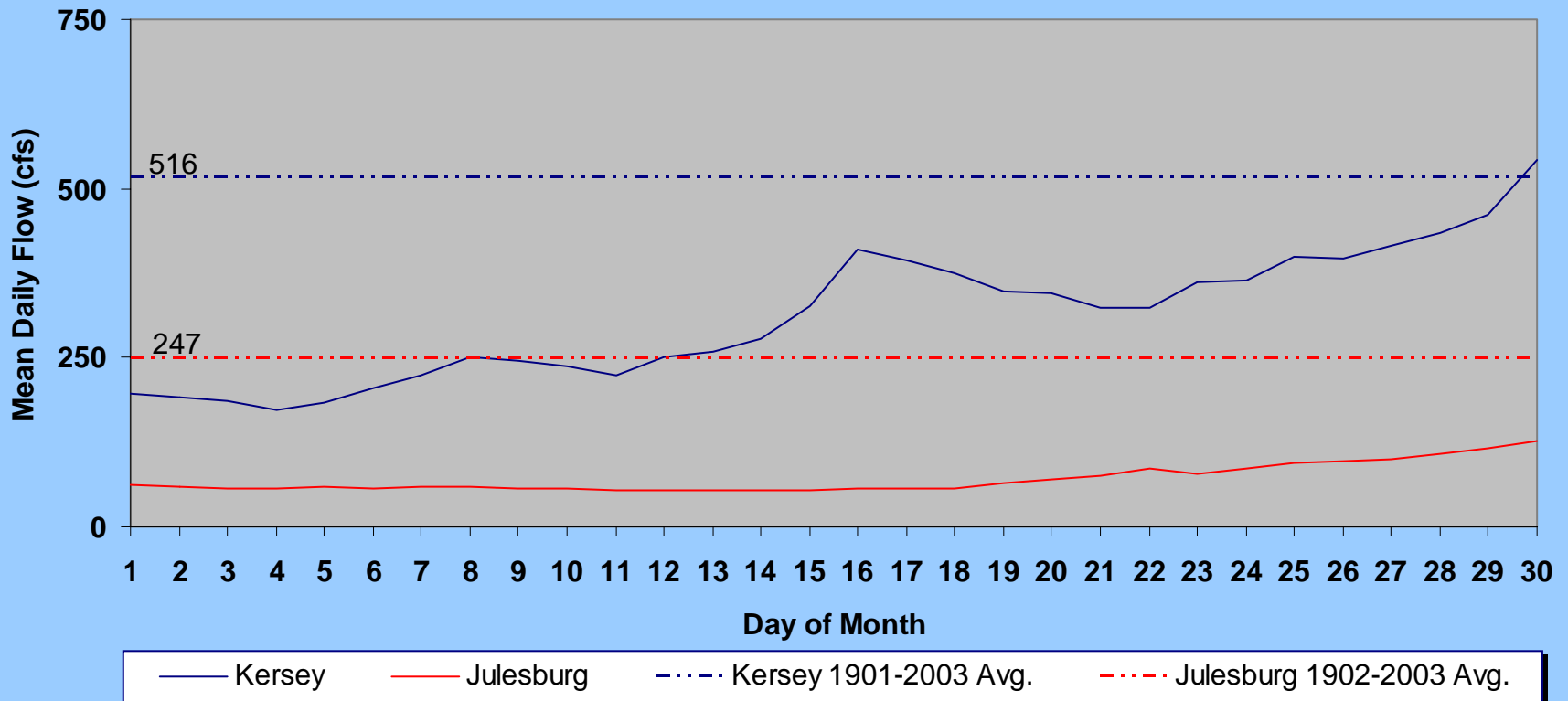
MONTH OF SEPTEMBER 2006

RESERVOIR	FULL ALLOWABLE CAPACITY (ACRE FEET)	FIRST OF MONTH (ACRE FEET)	END OF MONTH (ACRE FEET)	DISTRICT	CHANGE IN STORAGE (ACRE FEET)	% CHANGE IN STORAGE BASED ON FIRST OF MONTH STORAGE	% OF CURRENT FULL ALLOWABLE CAPACITY	% OF CURRENT FULL ALLOWABLE CAPACITY THIS MONTH LAST YEAR	SURCHARGE (ACRE FEET)
JULESBURG	22,666	0	0	64	0	0%	0%	26%	0
N STERLING	73,730	3,430	3,210	64	-220	-6%	4%	20%	0
PREWITT	28,500	5,339	4,700	64	-639	-12%	16%	36%	0
JACKSON	27,257	0	0	1	0	0%	0%	42%	0
EMPIRE	37,700	0	0	1	0	0%	0%	8%	0
RIVERSIDE	63,113	9,530	8,960	1	-570	-6%	14%	20%	0
BARR LAKE	31,652	4,067	3,826	2	-241	-6%	12%	16%	0
CHEESMAN	79,064	78,132	69,556	80	-8,576	-11%	88%	91%	0
ELEVEN MILE	97,779	99,452	99,555	23	103	0%	100%	100%	1,776
SPINNEY	53,651	50,252	46,552	23	-3,700	-7%	87%	71%	0
ANTERO	20,015	15,427	15,740	23	313	2%	79%	30%	0

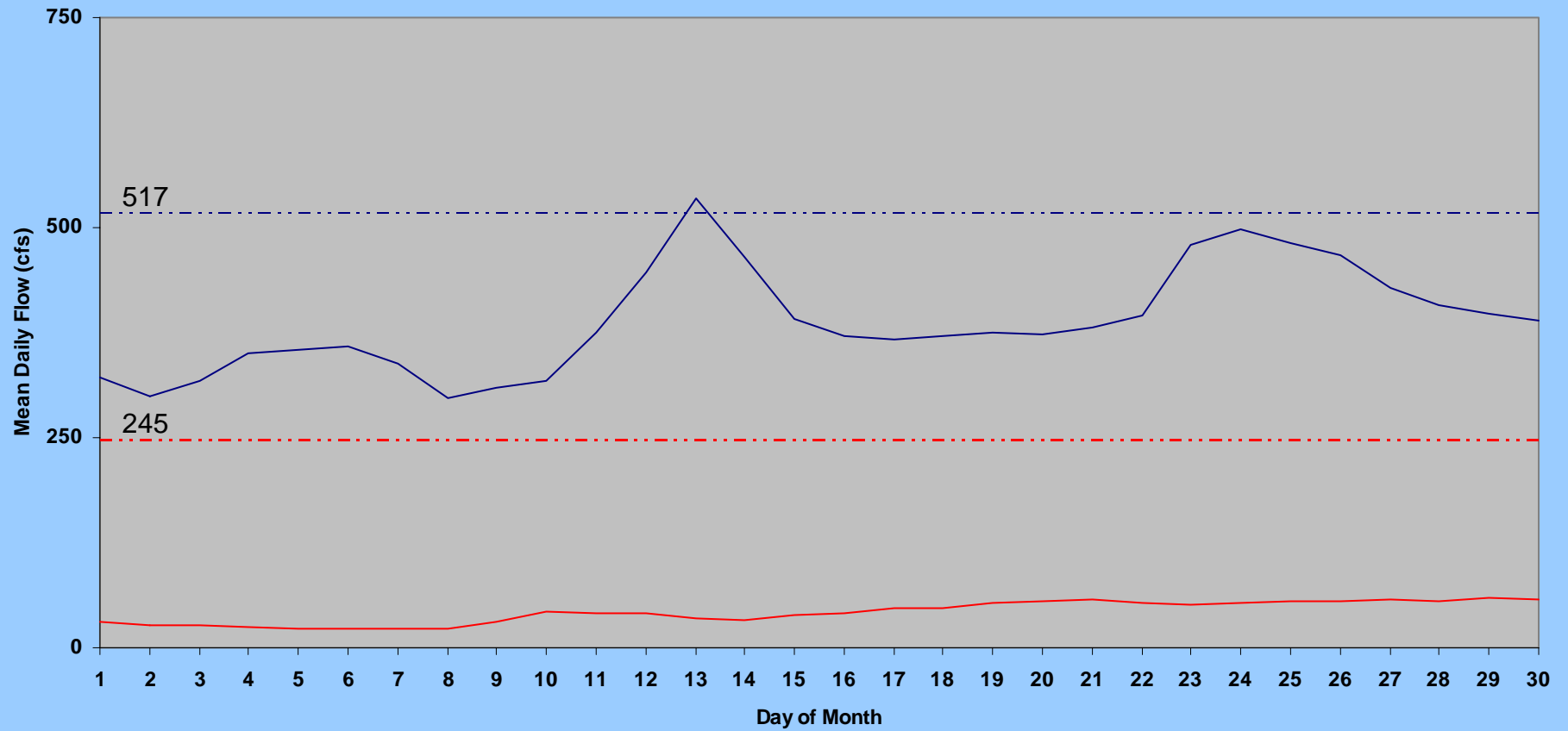
RIVER GAGES	MEAN DAILY FLOW (CFS)
KERSEY	389
JULESBURG	42
THIS MONTH LAST YEAR	
KERSEY	311
JULESBURG	71
MEAN FOR PERIOD OF RECORD*	
KERSEY	517
JULESBURG	245
* 1901-2004	
1902-2004	



SOUTH PLATTE RIVER SEPTEMBER 2005

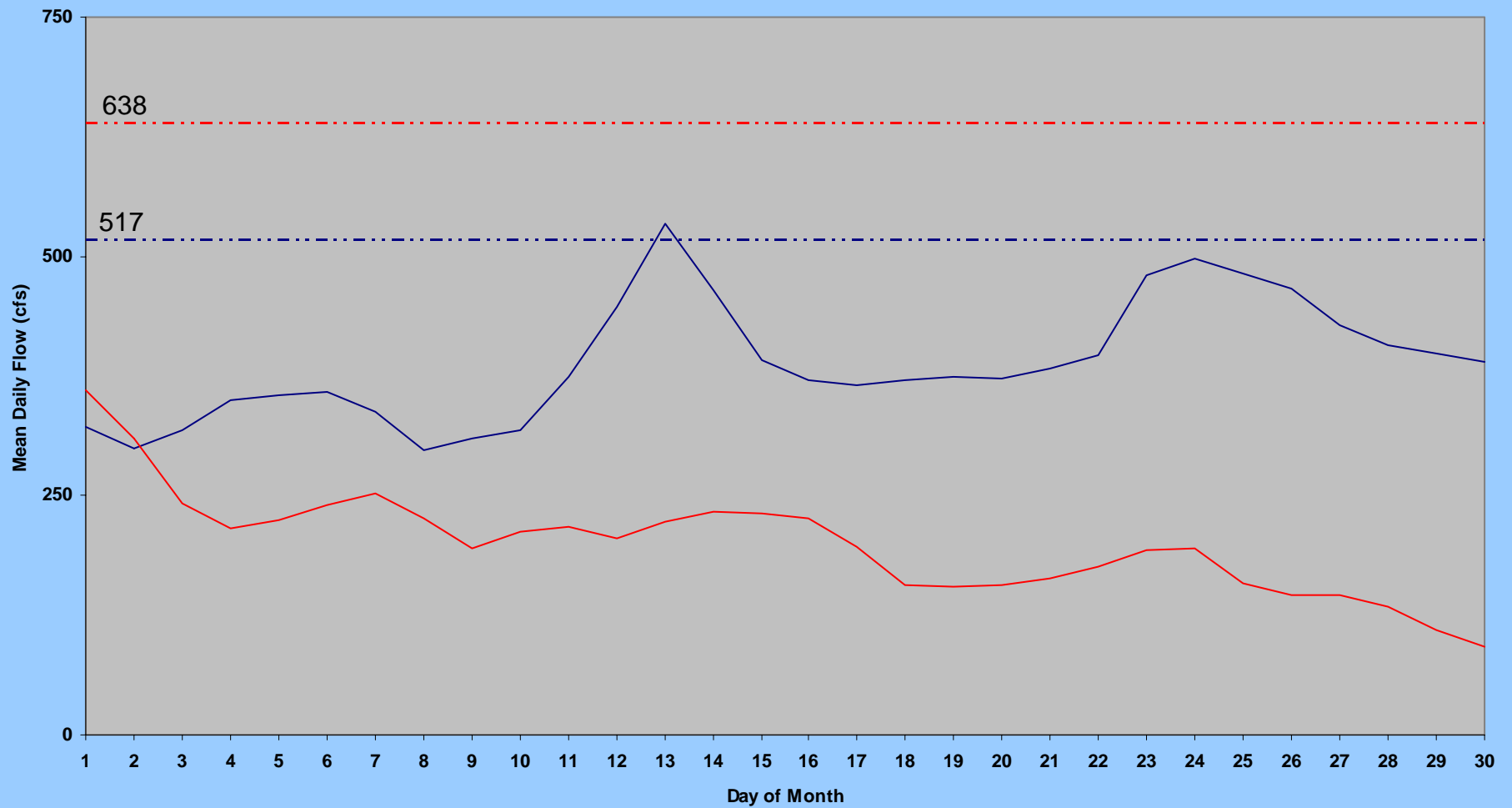


SOUTH PLATTE RIVER SEPTEMBER 2006



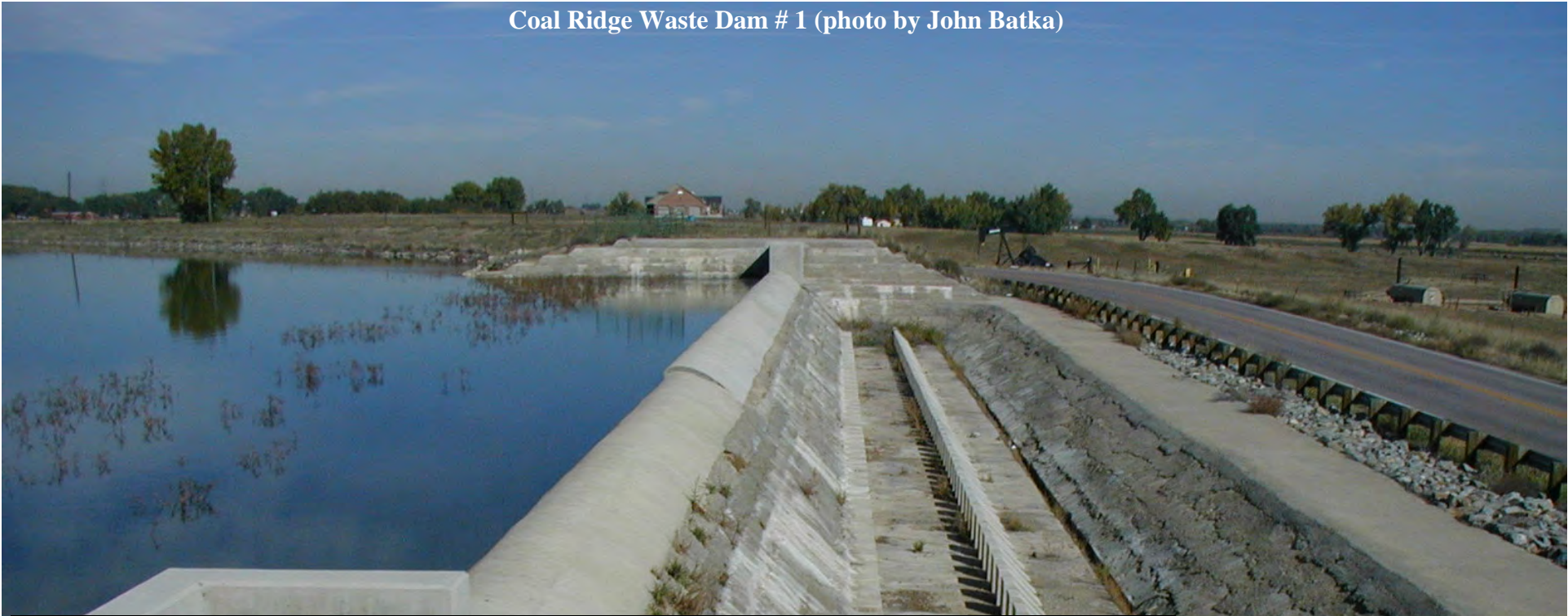
— Kersey — Julesburg - - - - Kersey 1901-2004 Avg. - - - - Julesburg 1902-2004 Avg.

KERSEY and BALZAC SEPTEMBER 2006



— Kersey — Balzac - - - - Kersey 1901-2004 Avg. - - - - Balzac 1981-2004 Avg.

Coal Ridge Waste Dam # 1 (photo by John Batka)

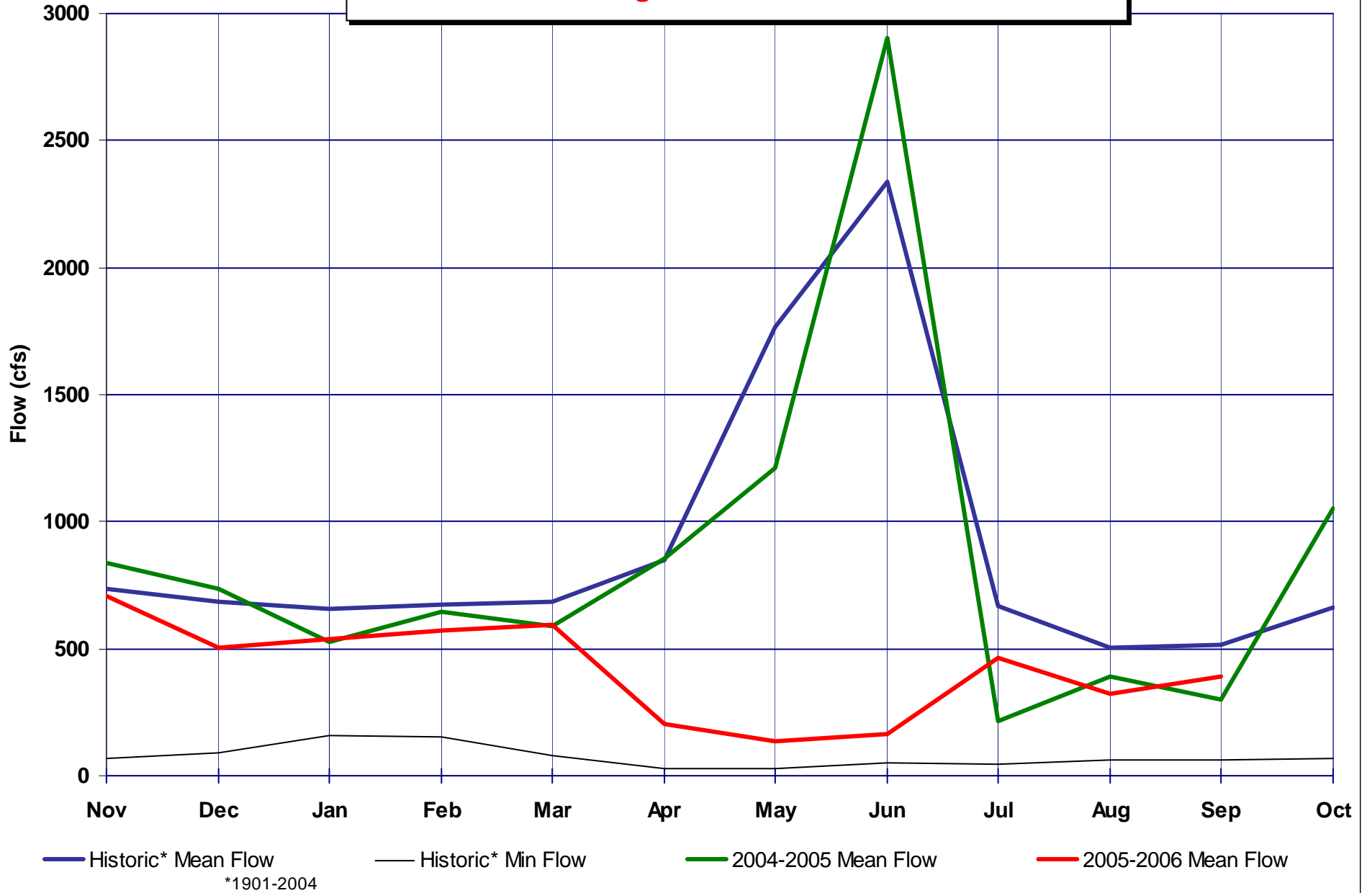


South Platte River Monthly Stream Flow (cfs) Statistics

South Platte River at Kersey							South Platte River at Julesburg						
Month	Historic* Mean Flow	Historic* Max Flow	Year	Historic* Min Flow	Year	IY 2006 Mean Monthly Flow	Month	Historic* Mean Flow	Historic* Max Flow	Year	Historic* Min Flow	Year	IY 2006 Mean Monthly Flow
Nov	737	3650	1984	70	1934	709	Nov	346	2900	1984	4.2	1903	71
Dec	684	1890	1961	91	1934	502	Dec	408	1820	1984	13	2002	165
Jan	656	2160	1974	158	1935	537	Jan	526	2510	1970	21	2003	98
Feb	673	3060	1914	152	1935	569	Feb	604	3220	1930	22	2004	115
Mar	686	3470	1983	80	1935	592	Mar	545	12900	1910	15	1904	100
Apr	849	18100	1942	28	1955	204	Apr	540	14400	1942	4.0	1904	144
May	1766	26100	1973	29	1955	138	May	1043	18100	1973	12	1911	174
Jun	2336	31000	1921	52	1954	165	Jun	1459	30800	1921	2.0	1910	34
Jul	670	12600	1983	44	1955	462	Jul	300	12600	1983	0.0	1903	31
Aug	506	9690	1951	65	1934	320	Aug	184	8920	1968	0.0	1903	25
Sep	517	14200	1938	62	1940	389	Sep	245	7130	1938	2.0	1902	42
Oct	662	6180	1984	66	1954		Oct	308	3130	1984	4.2	1903	
*Period of record 1901-2004							*Period of record 1902-2004						

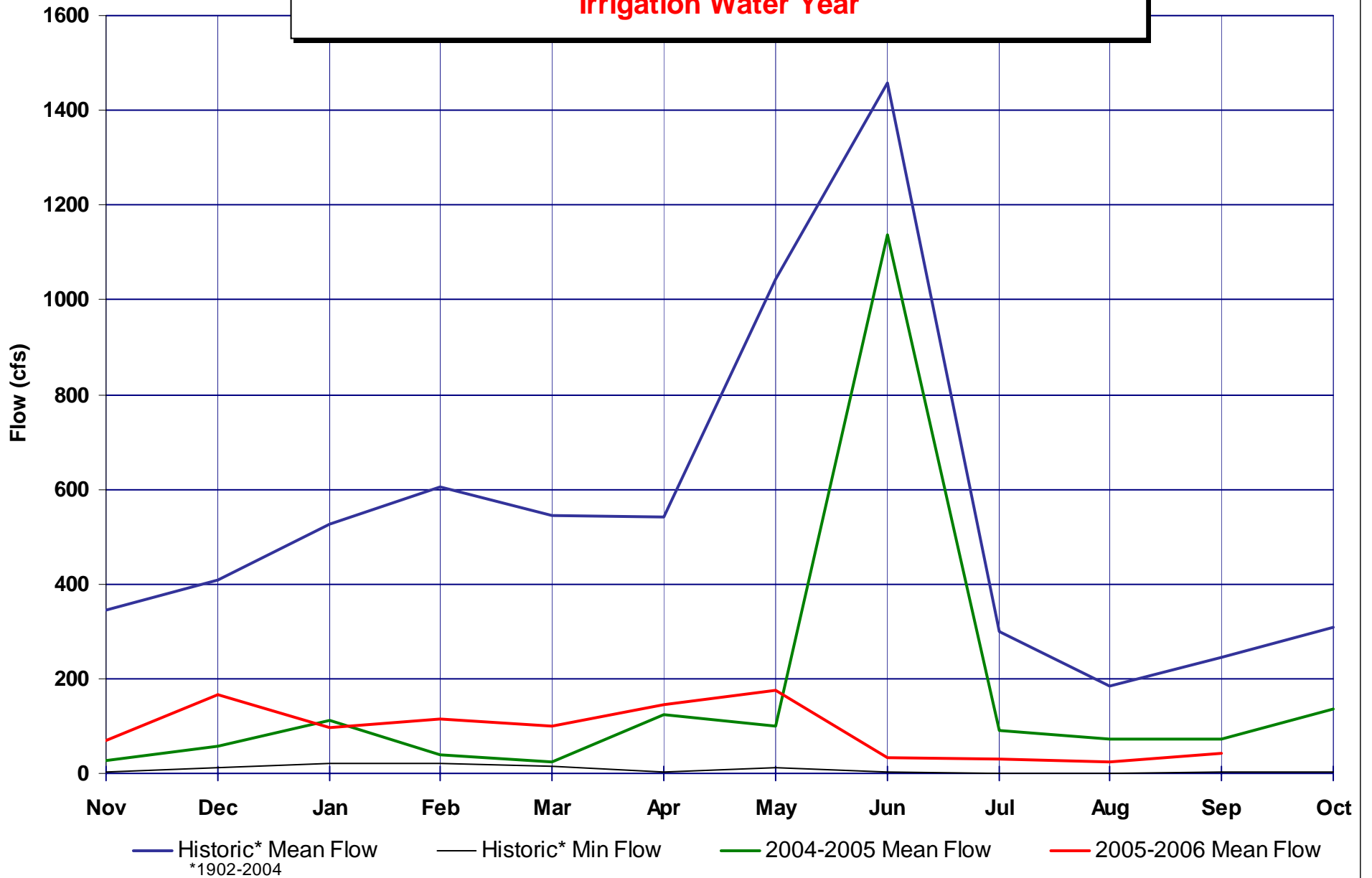
South Platte River at Kersey

Irrigation Water Year



South Platte River at Julesburg

Irrigation Water Year



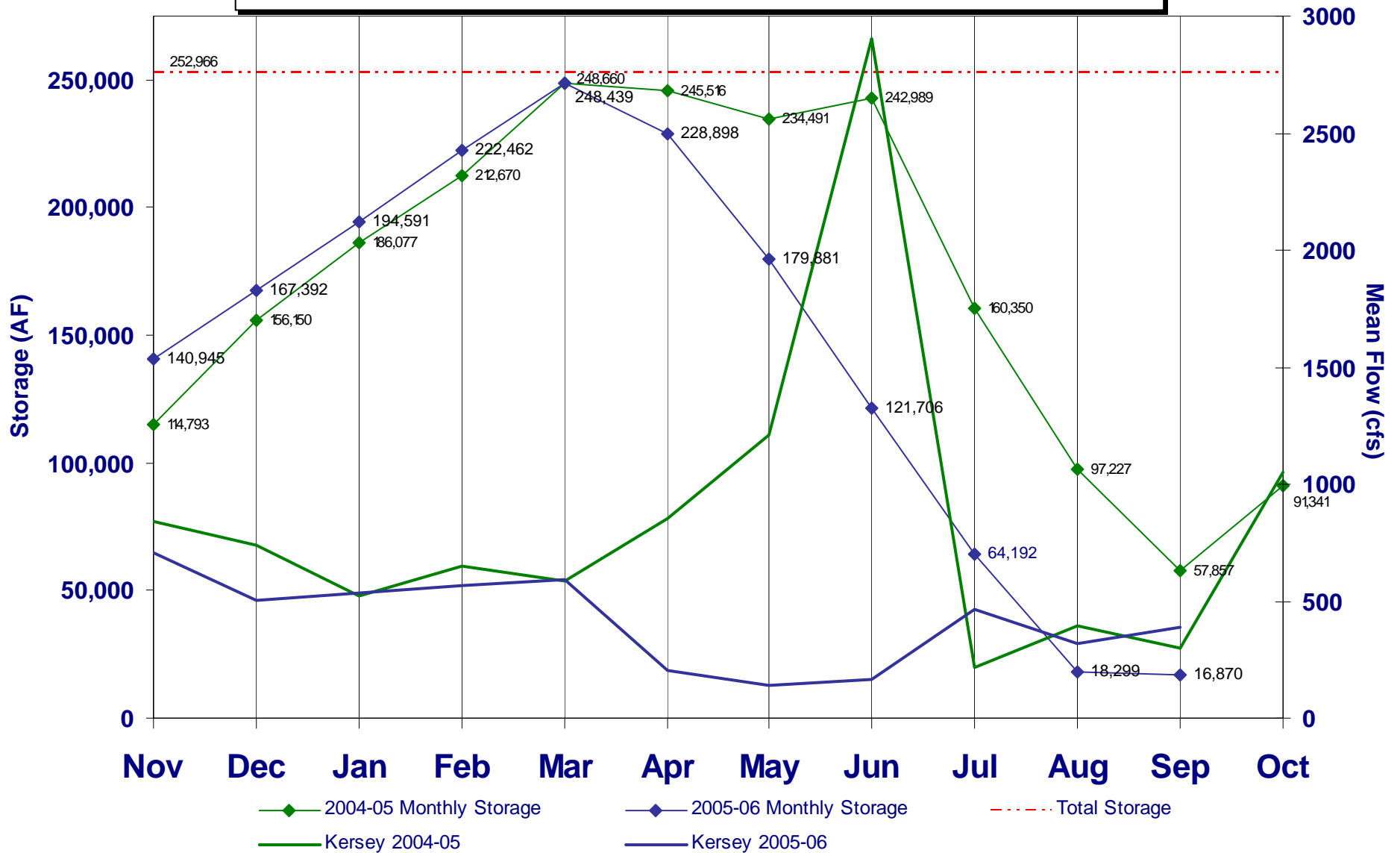
**Next four slides show Reservoir Storage
below and above Kersey**



**Long Draw Reservoir
(photo by Mike Cola)**

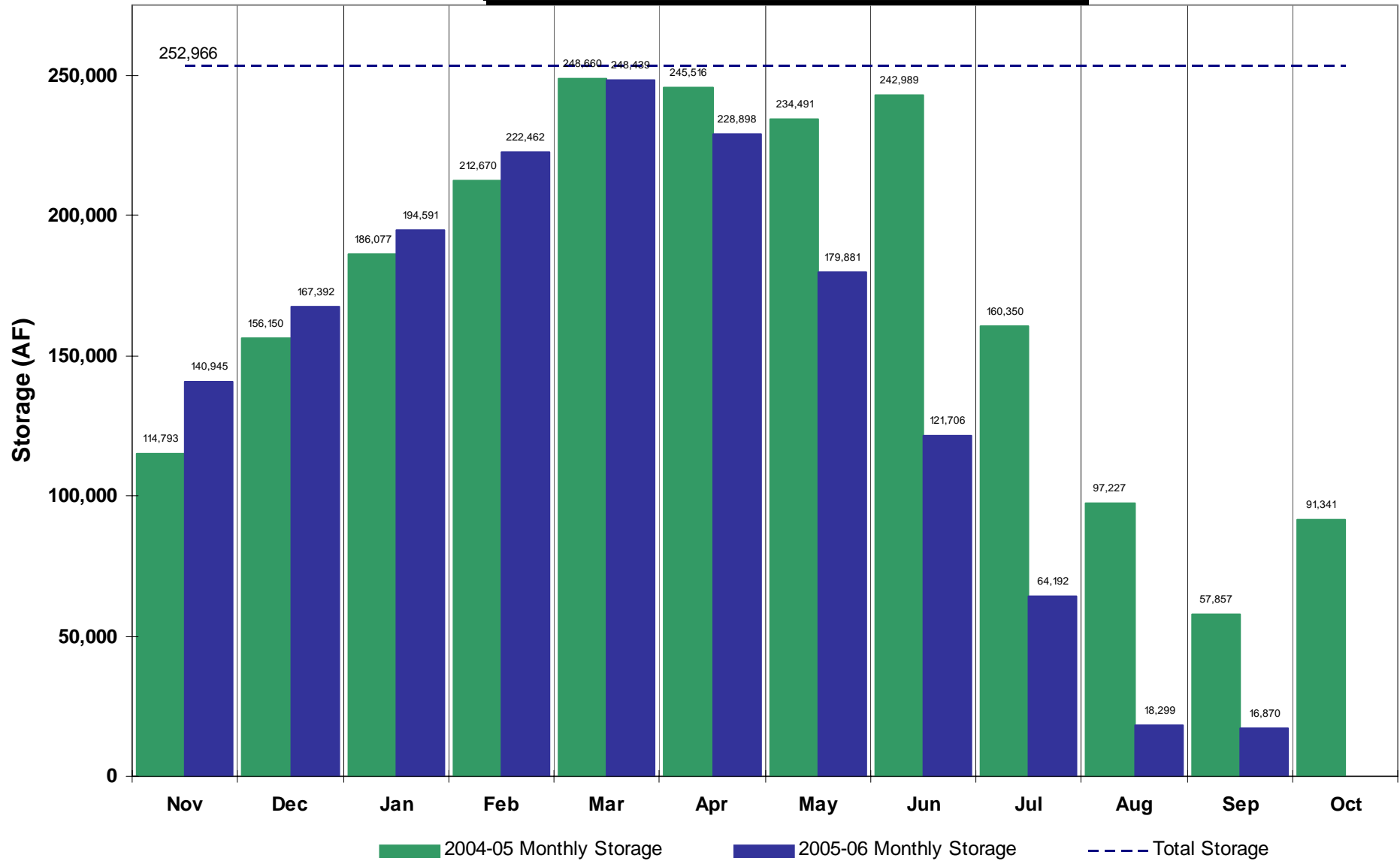
Reservoir Storage below Kersey

Selected Reservoirs*



*Empire, Riverside, Jackson, Prewitt, North Sterling, & Julesburg

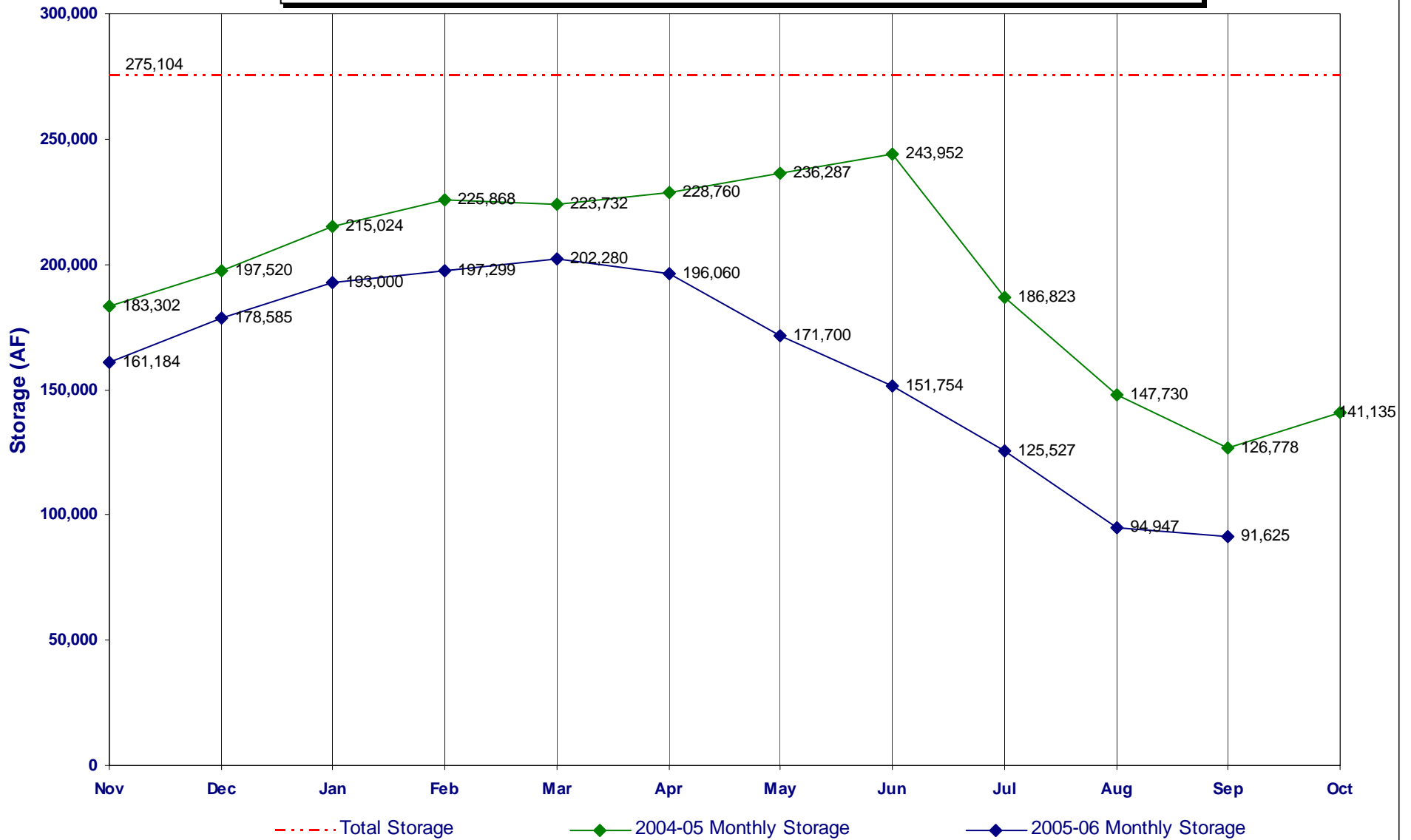
South Platte Reservoirs Storage below Kersey*



*Empire, Riverside, Jackson, Prewitt, North Sterling, & Julesburg

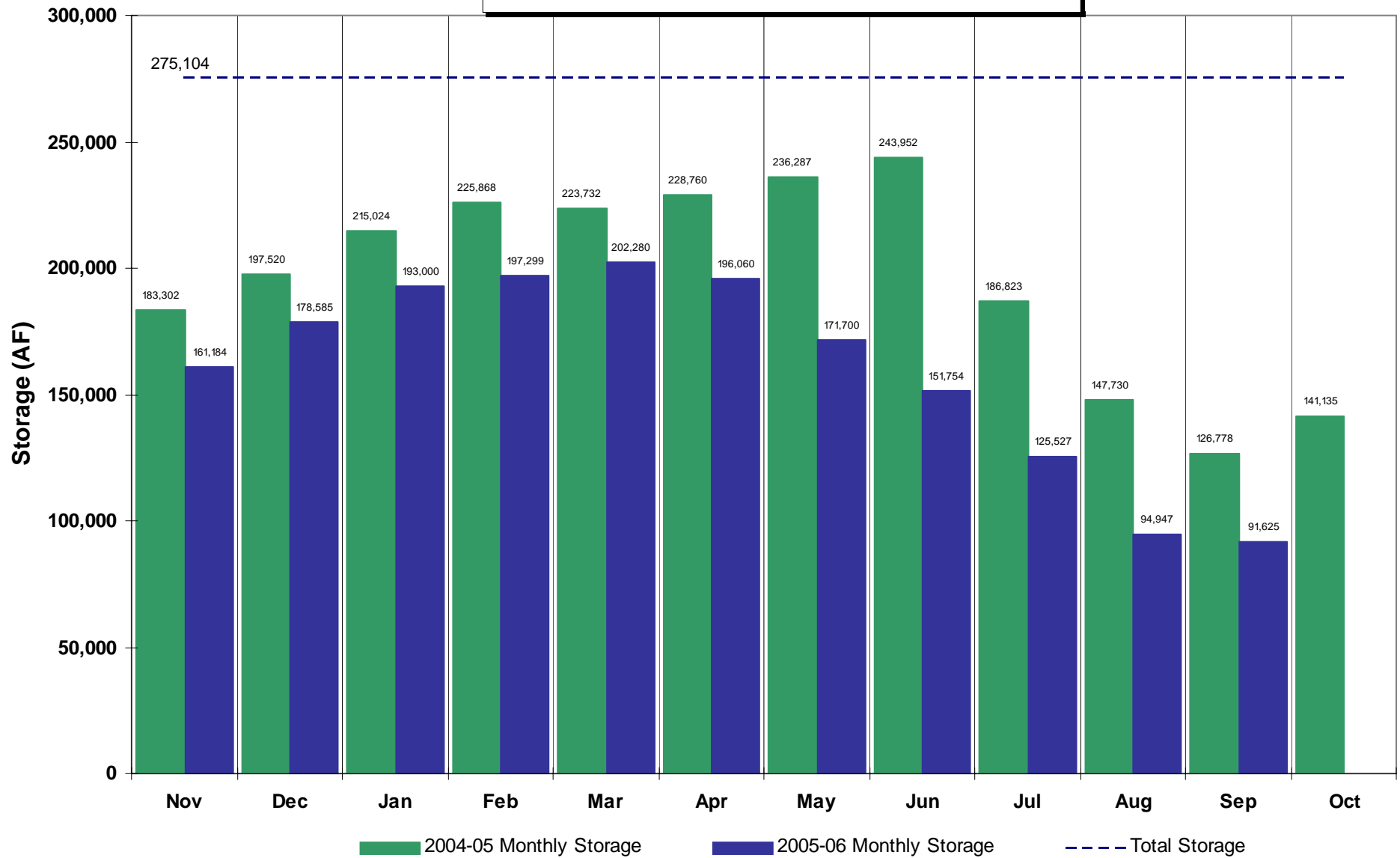
Reservoir Storage above Kersey

Selected Reservoirs*



*Barr, Cobb, Fossil Crk, Halligan, Marshall, Milton, Union, Standley, Lower Latham, Boyd, Loveland, Windsor, Horse Crk, & Prospect

South Platte Reservoirs Storage above Kersey*



*Barr, Cobb, Fossil Crk, Halligan, Marshall, Milton, Union, Standley, Lower Latham, Boyd, Loveland, Windsor, Horse Crk, &

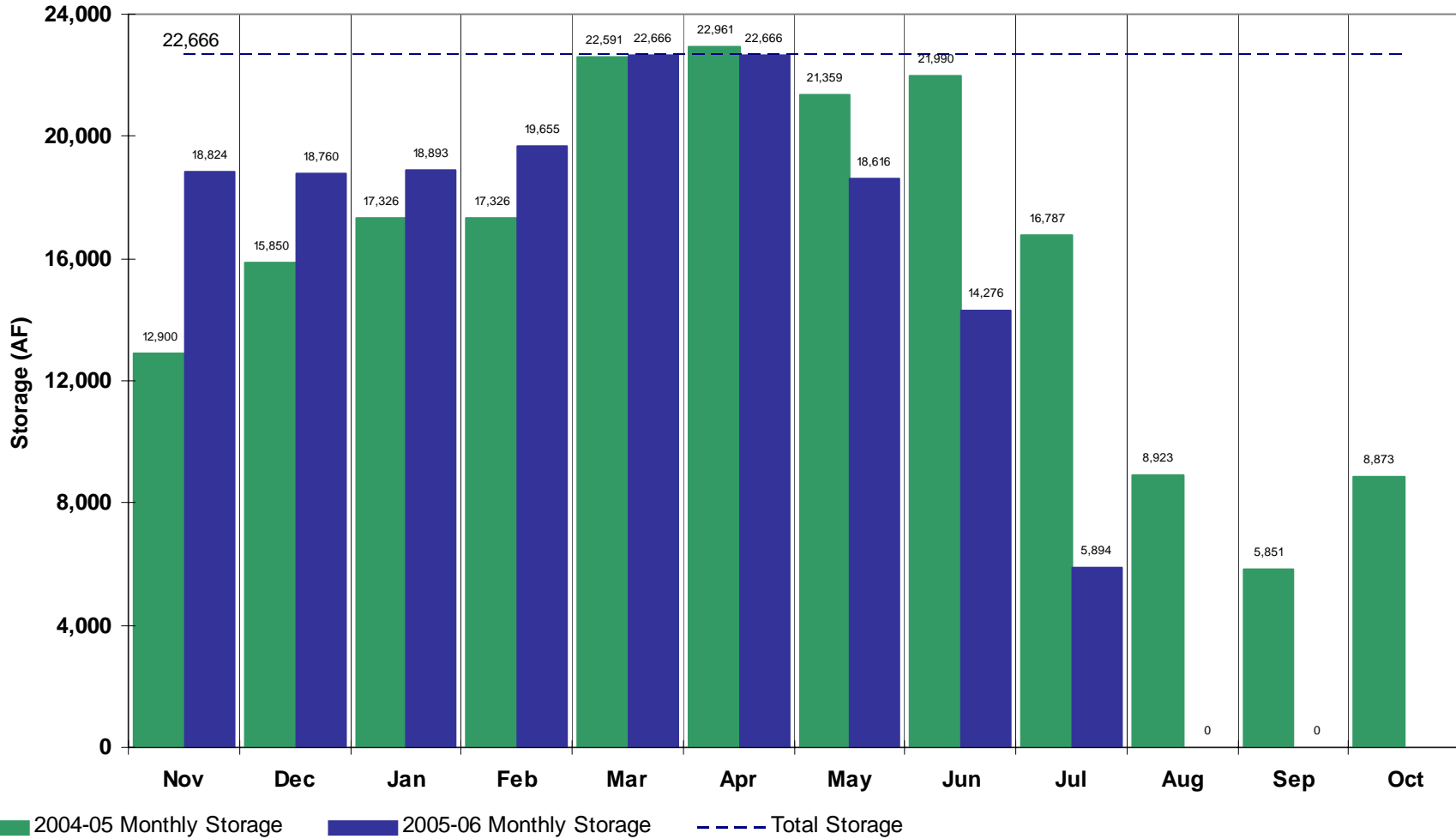
Individual Reservoir Storage Follows



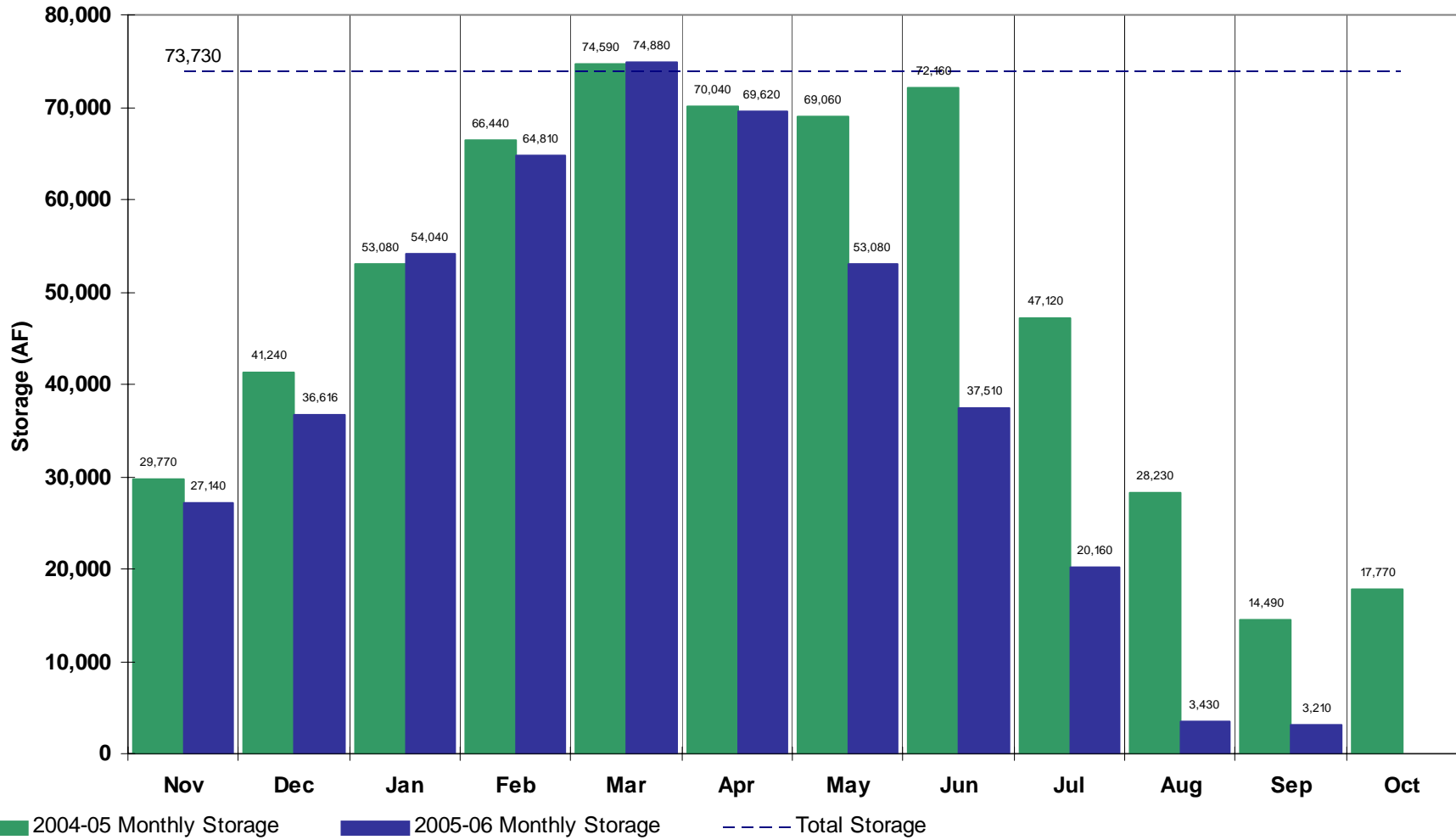
Long Draw Reservoir Dam
Downstream Slope
(photo by Mike Cola)

Julesburg Reservoir

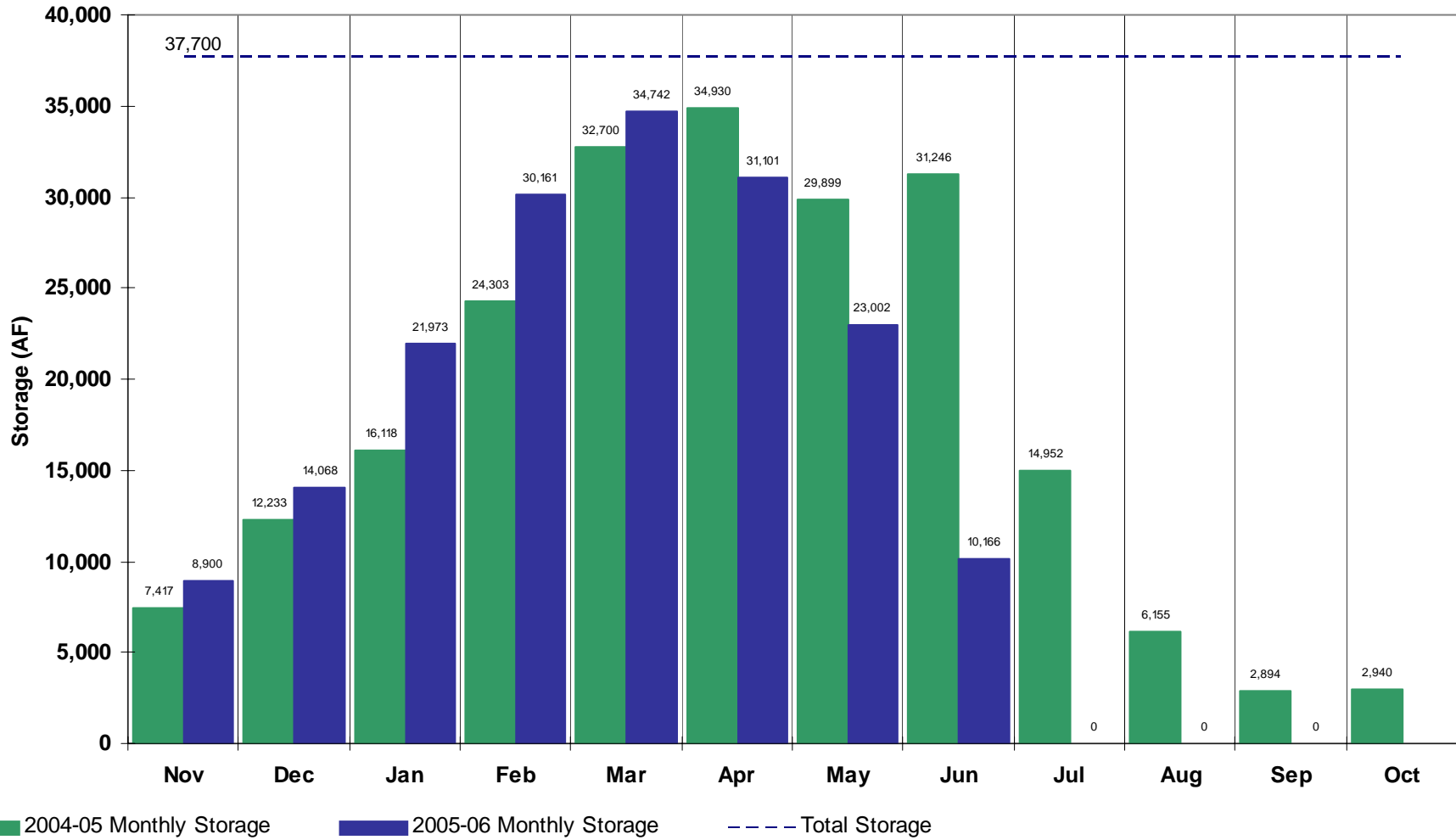
(Agricultural)



North Sterling Reservoir (Agricultural)

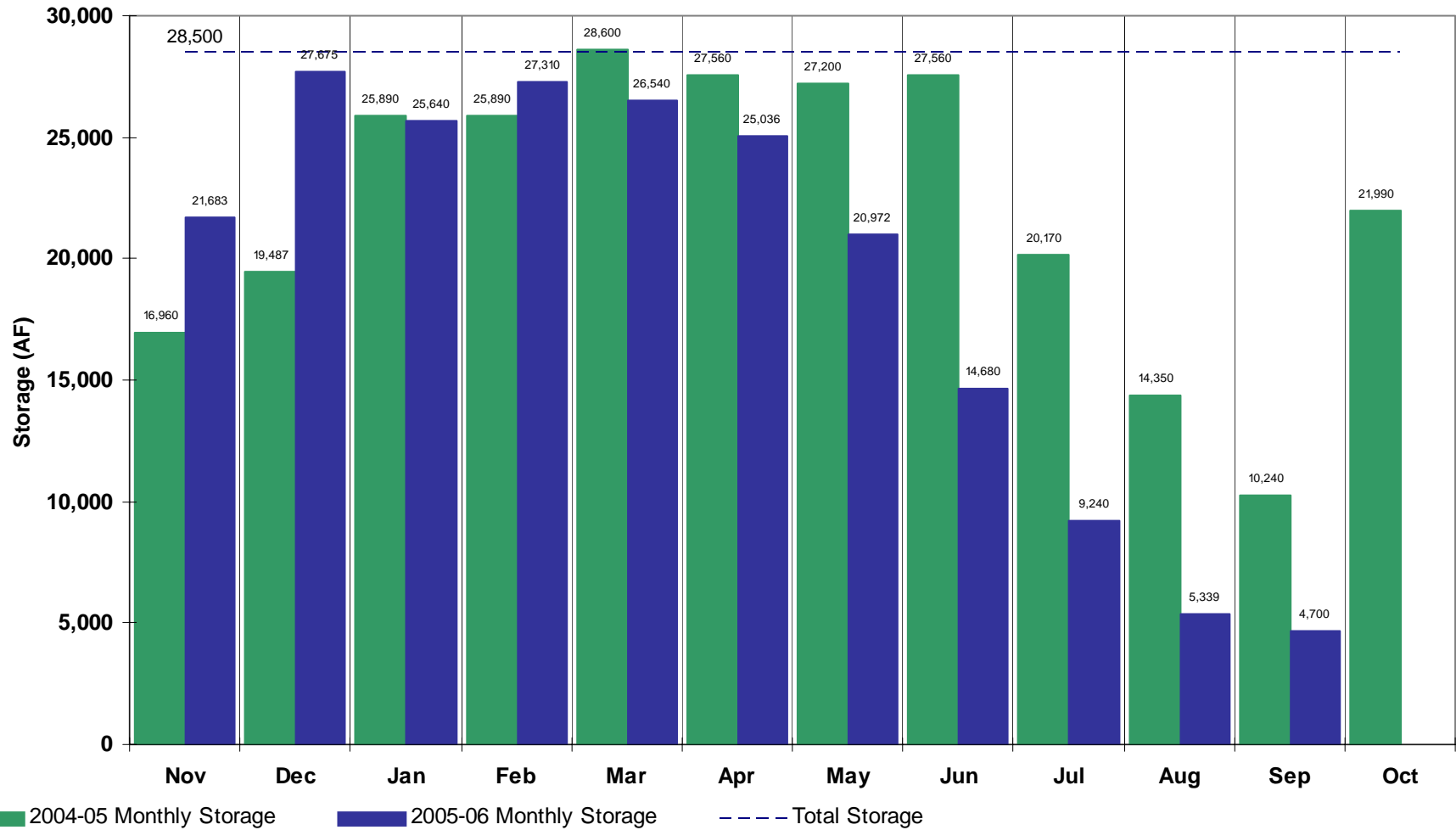


Empire Reservoir (Agricultural)



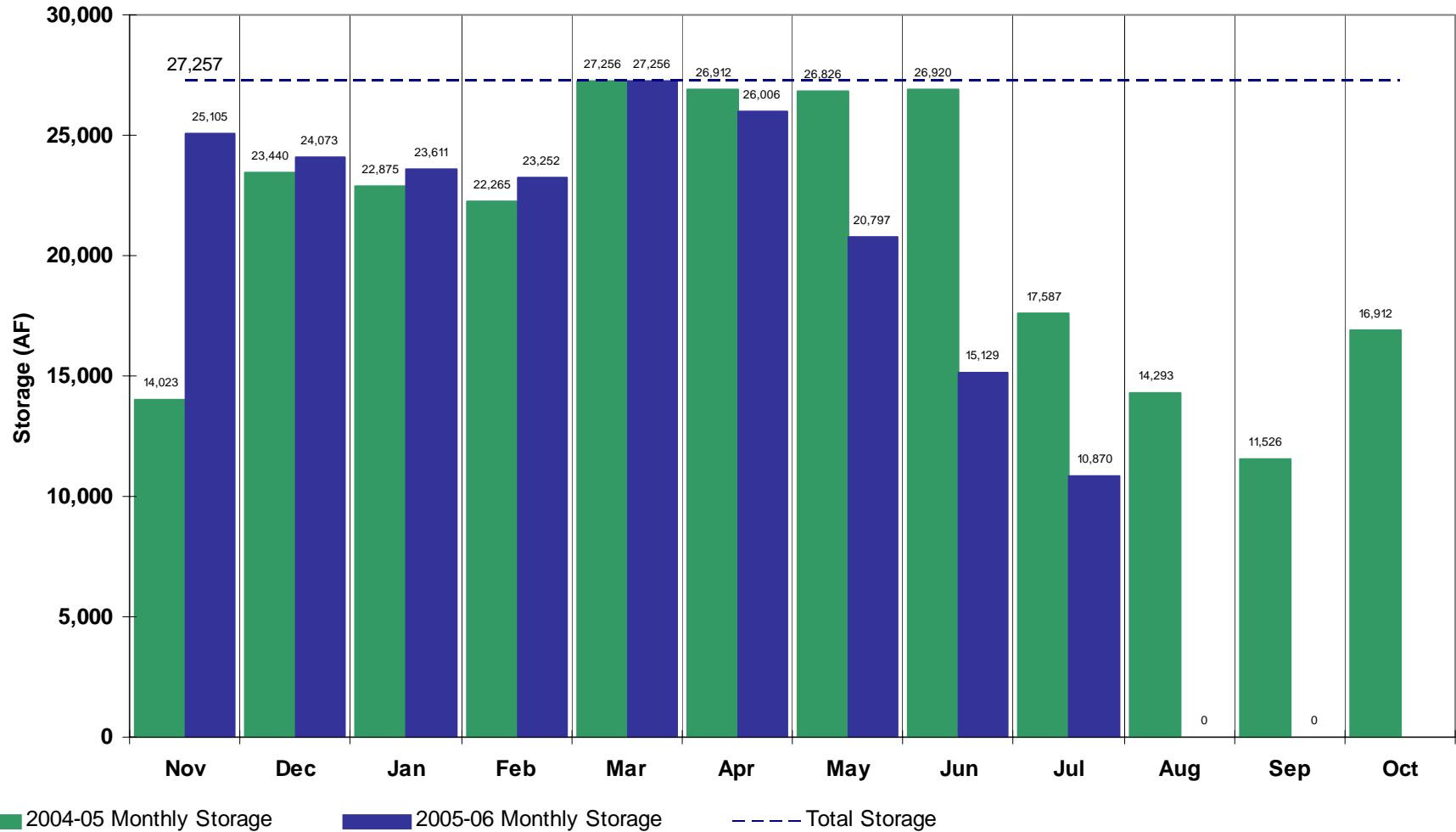
Prewitt Reservoir

(Agricultural)



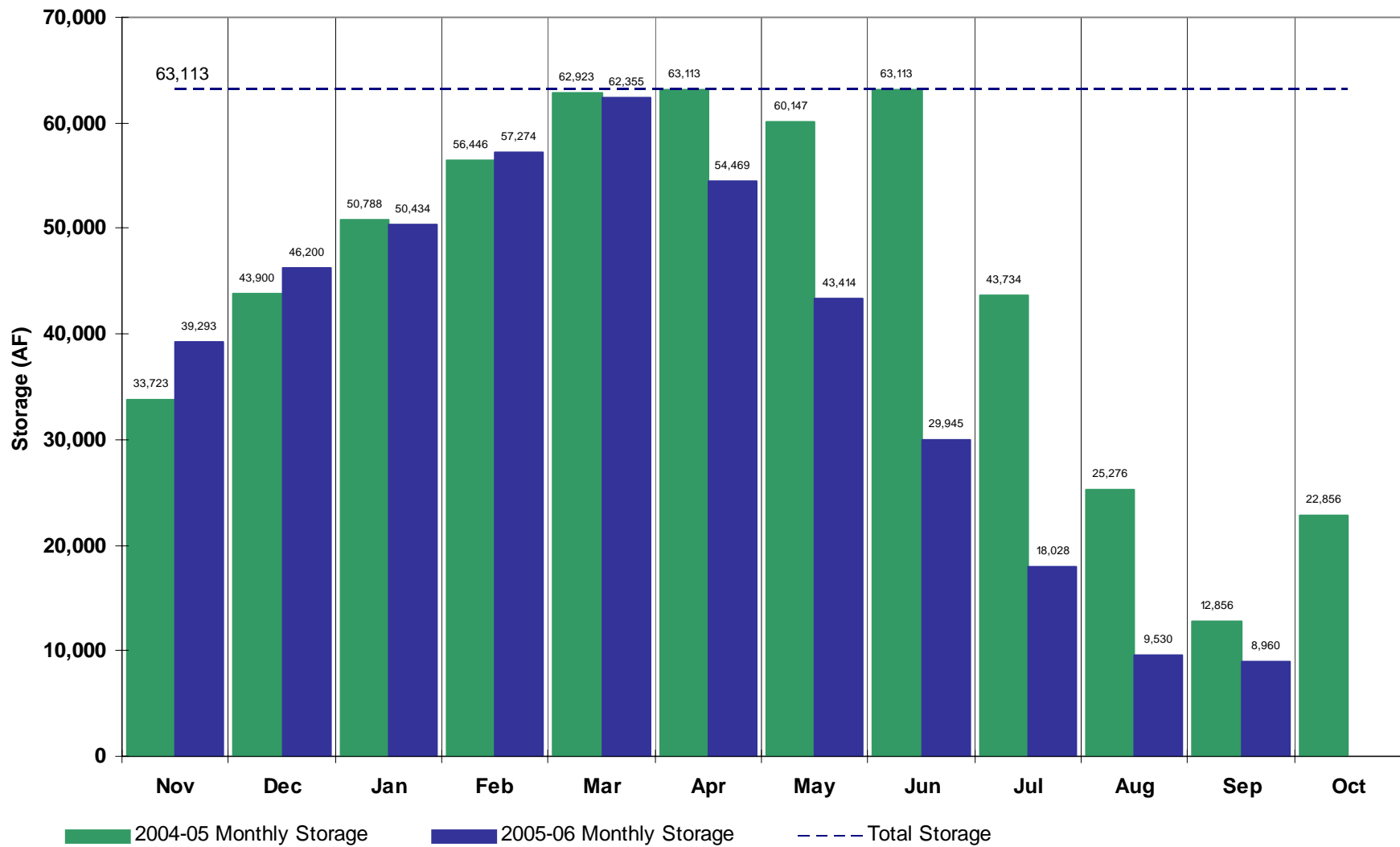
Jackson Reservoir

(Agricultural)

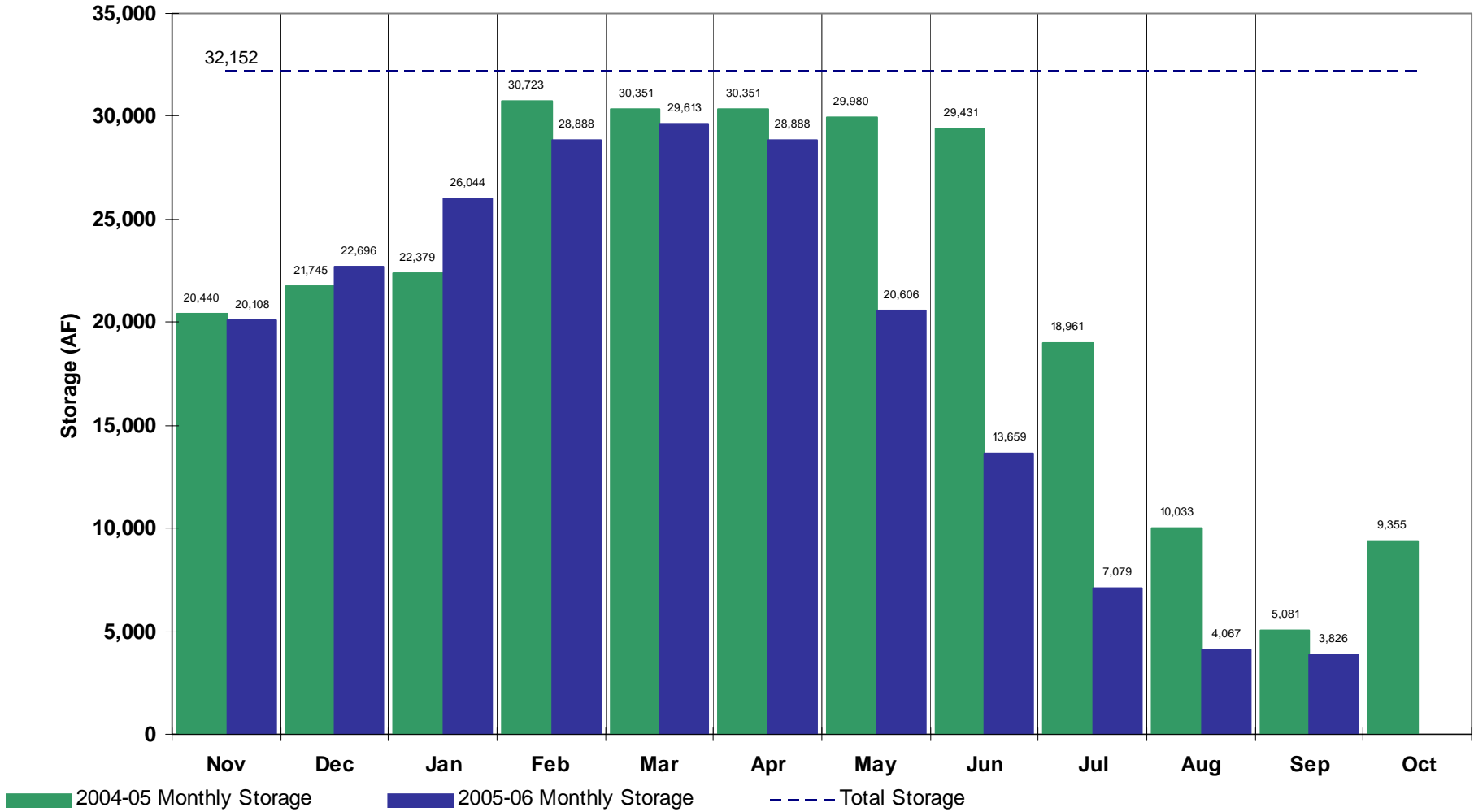


Riverside Reservoir

(Agricultural)

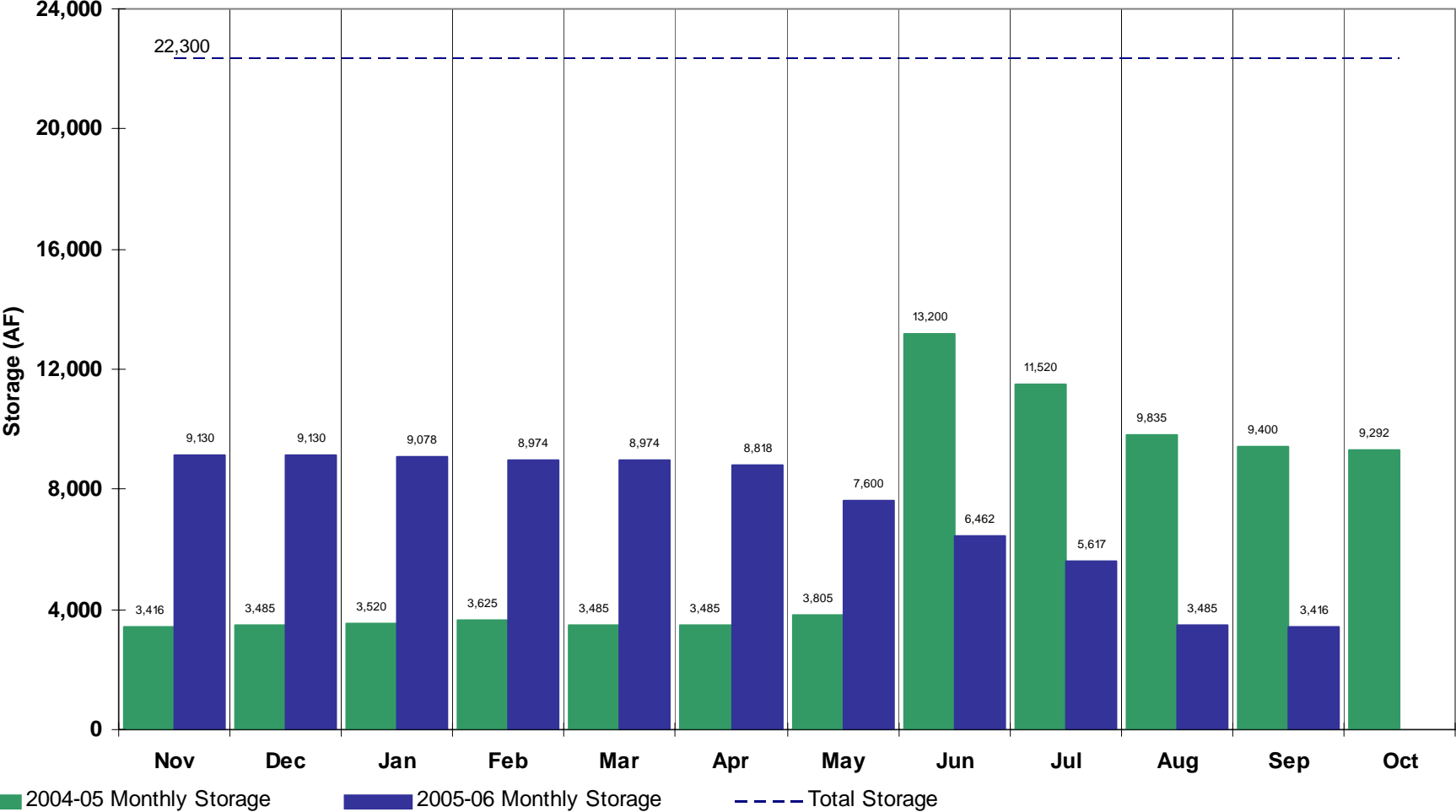


Barr Lake (Agricultural)



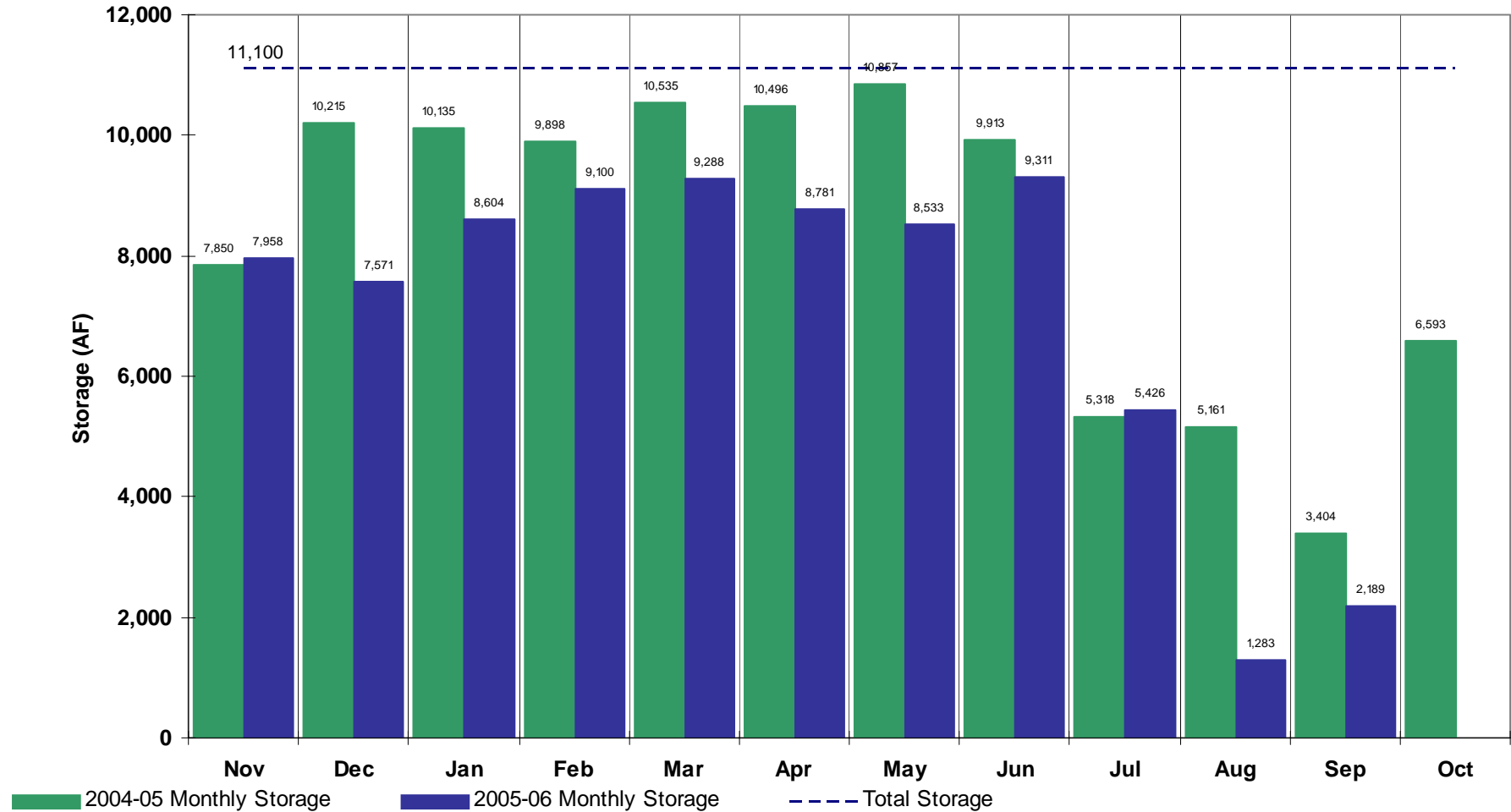
Cobb Lake

(Agricultural)

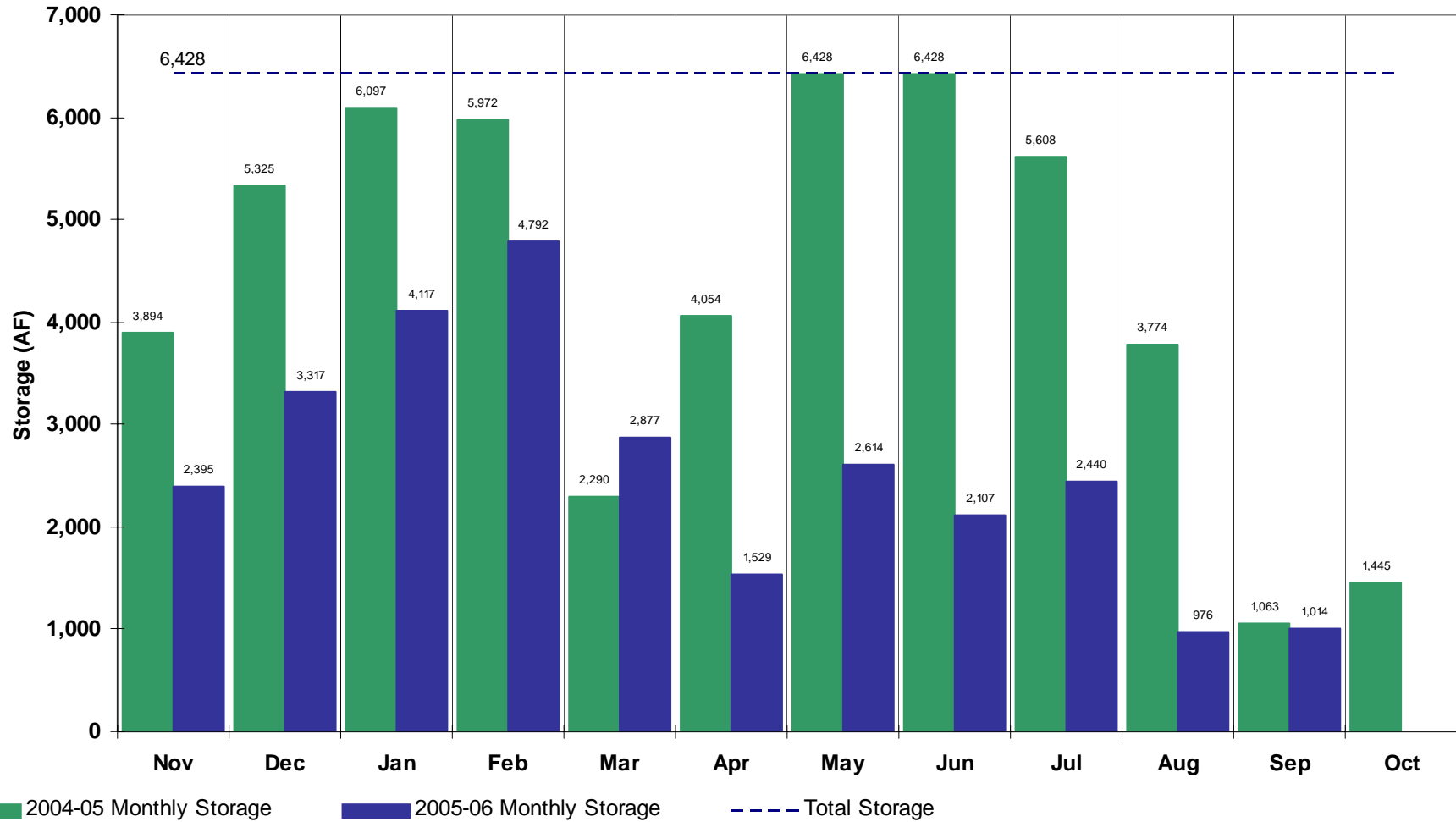


Fossil Creek Reservoir

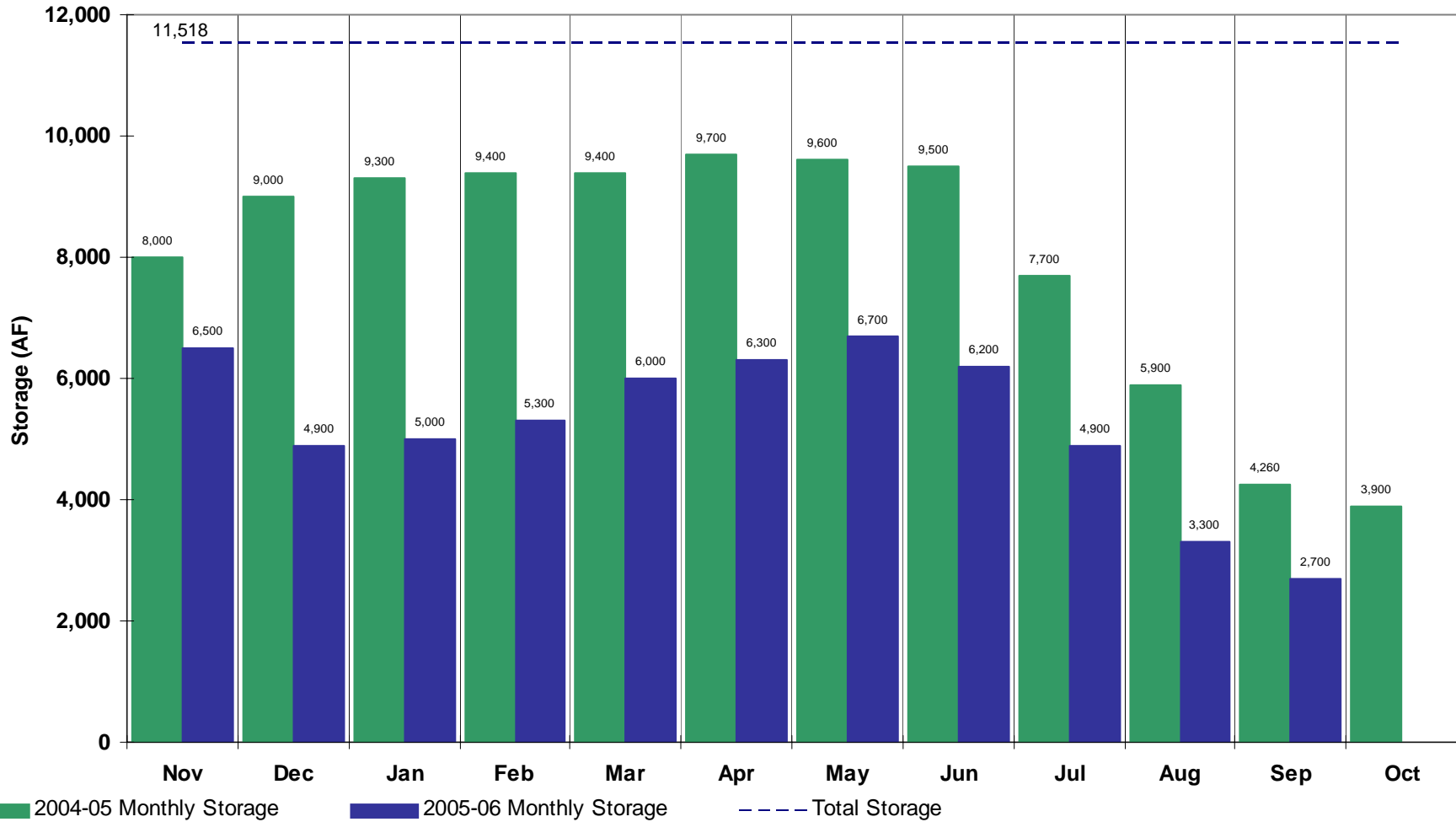
(Agricultural)



Halligan Reservoir (Agricultural)

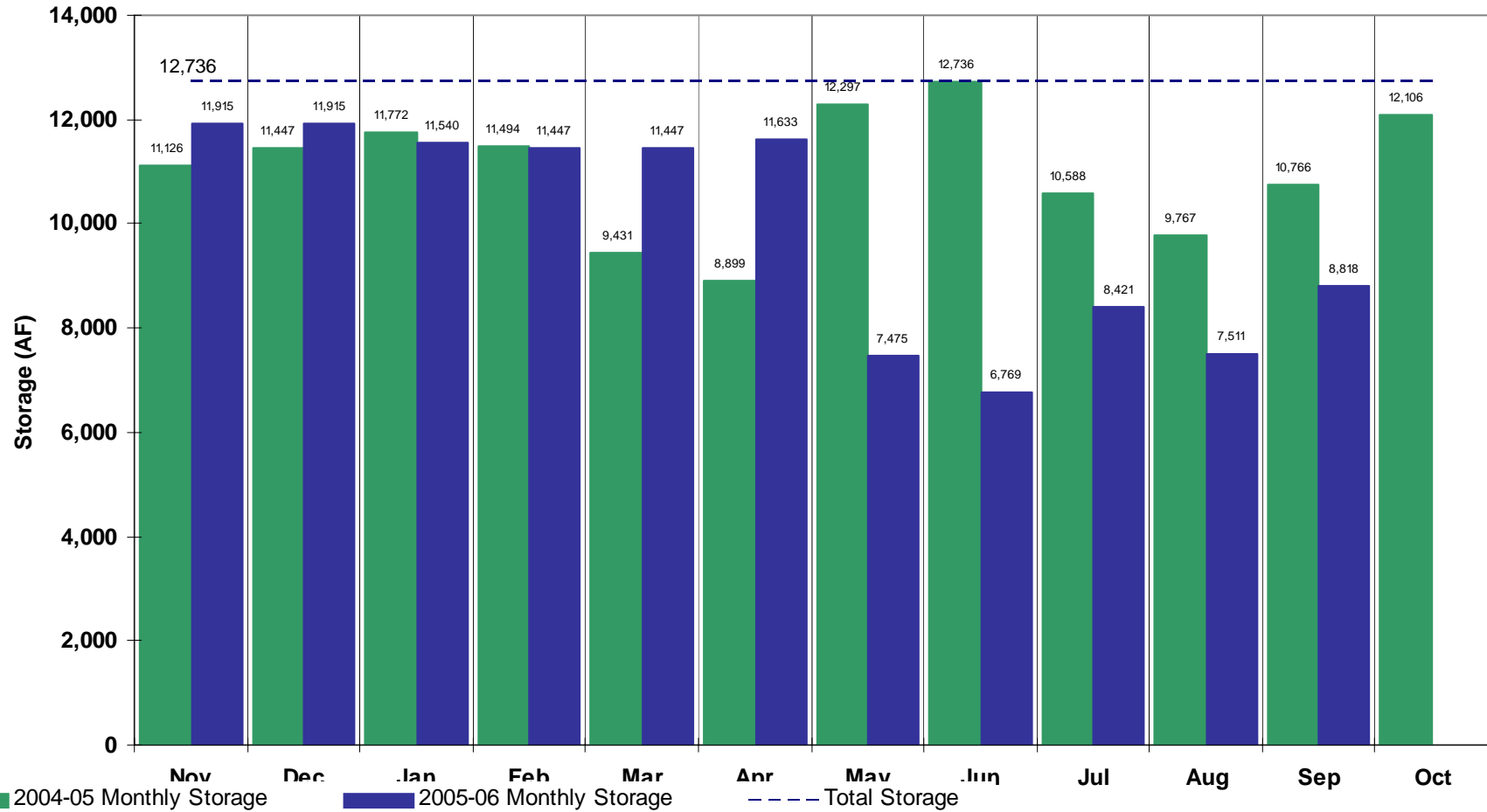


Marshall Lake (Agricultural)



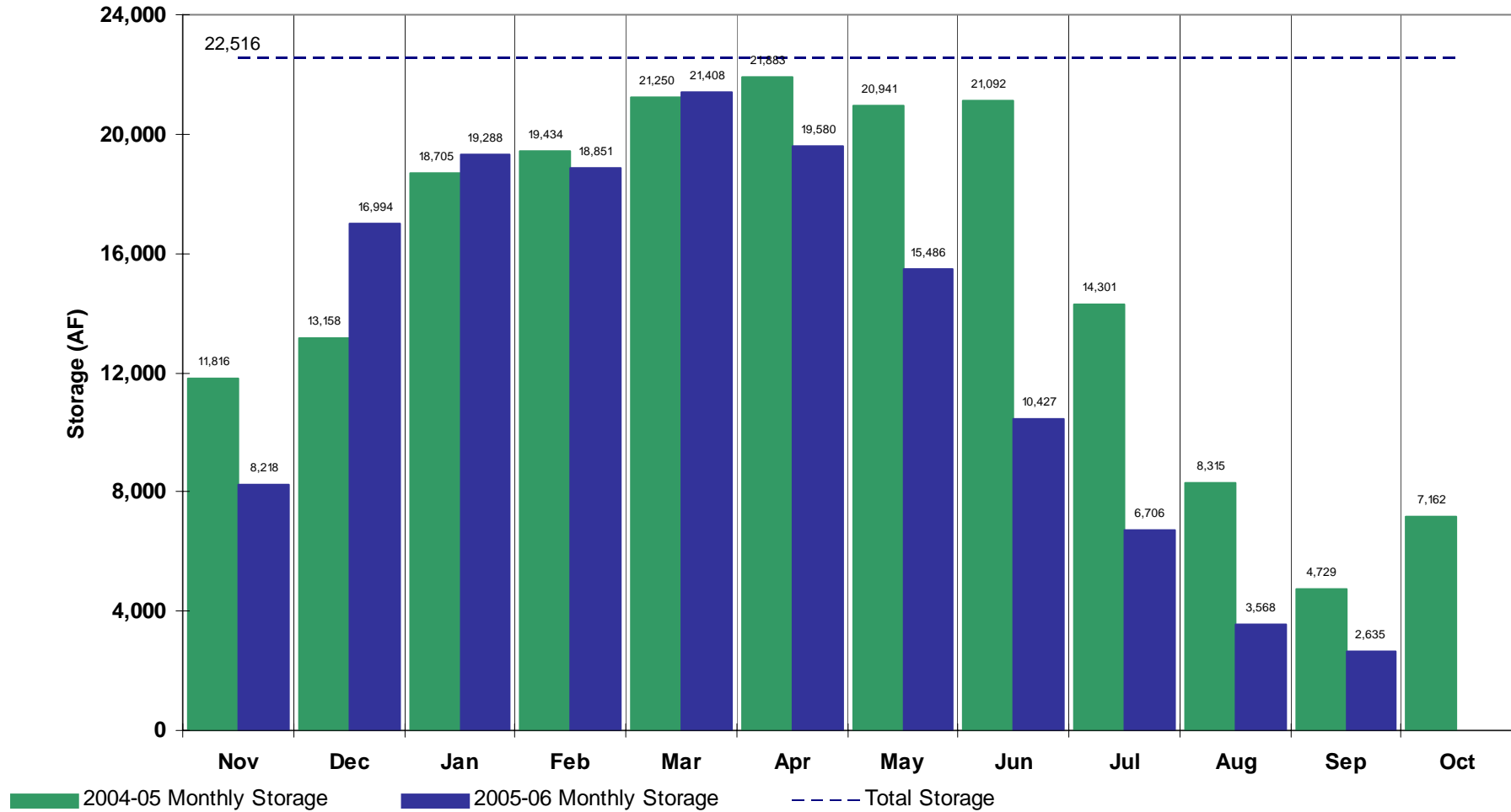
Loveland Greeley Reservoir

(Agricultural)

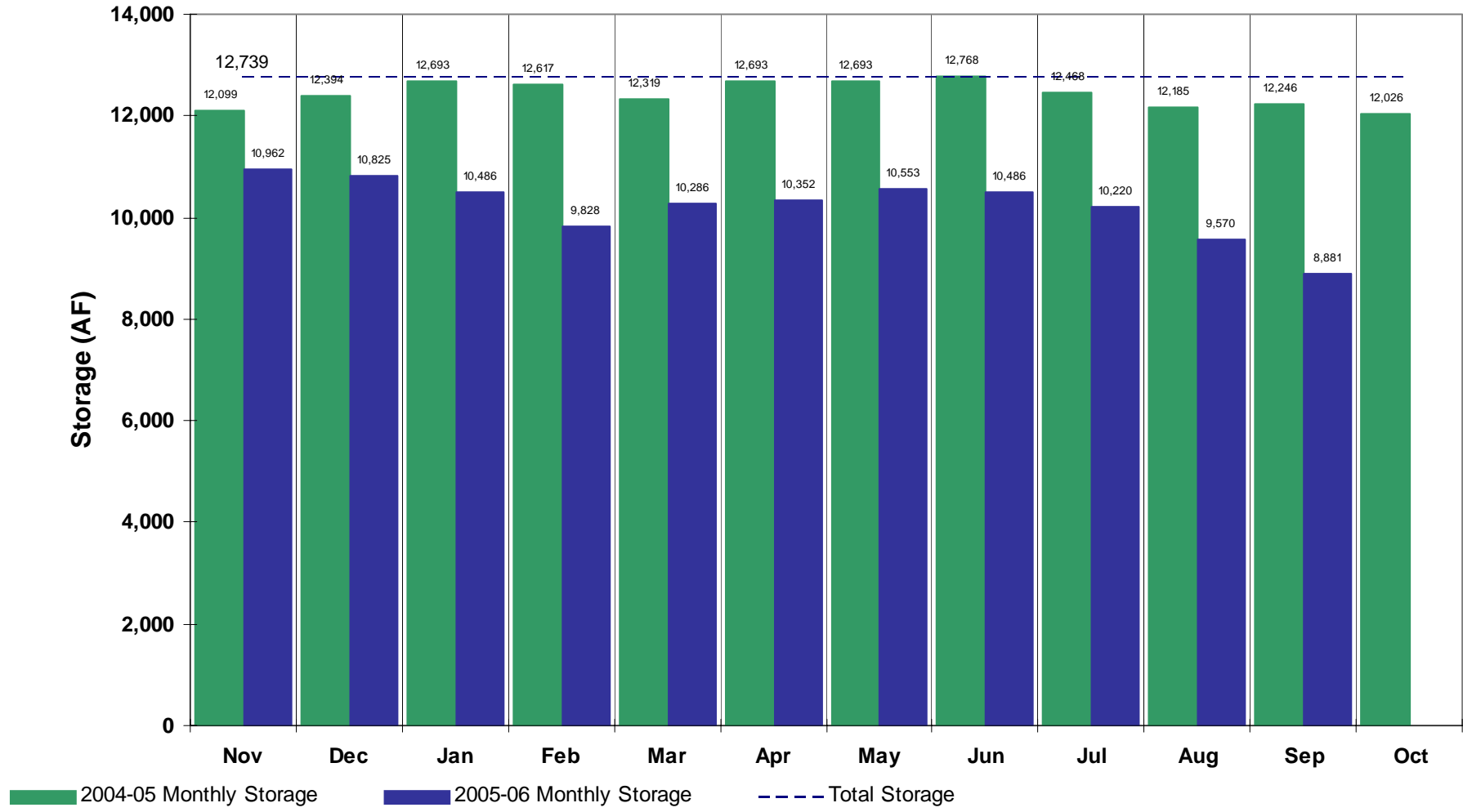


Milton Reservoir

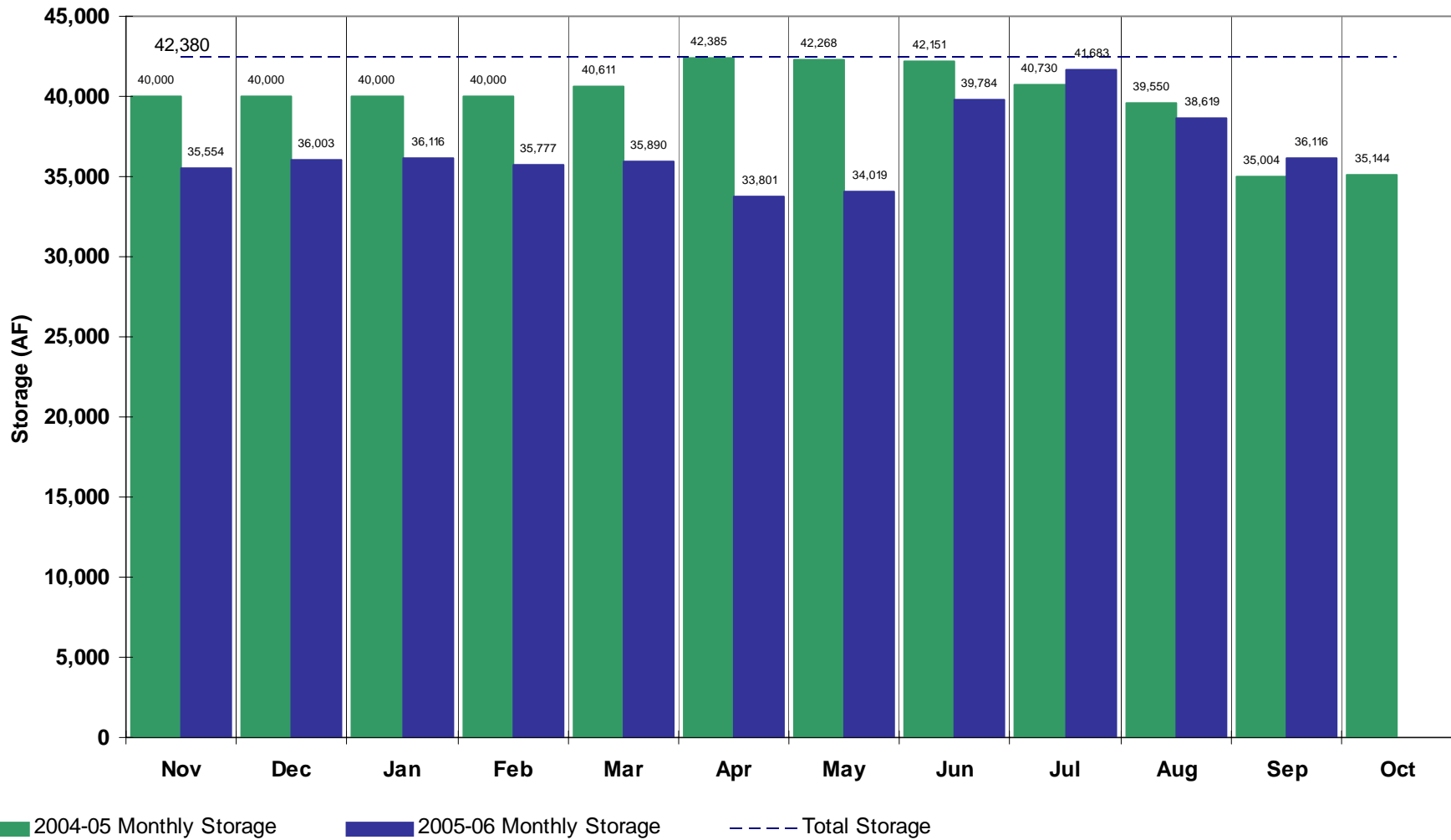
(Agricultural)



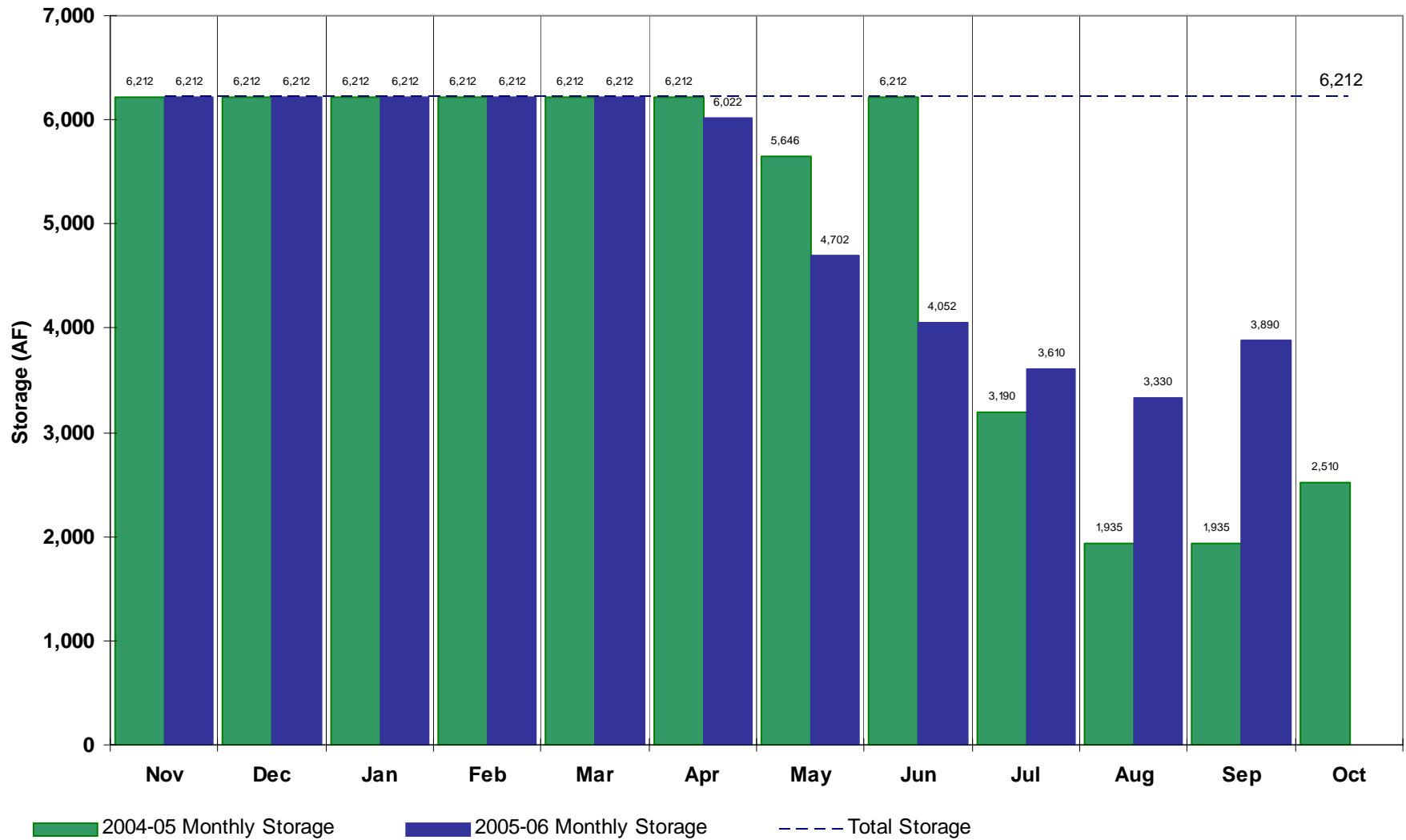
Union Reservoir (Agricultural)



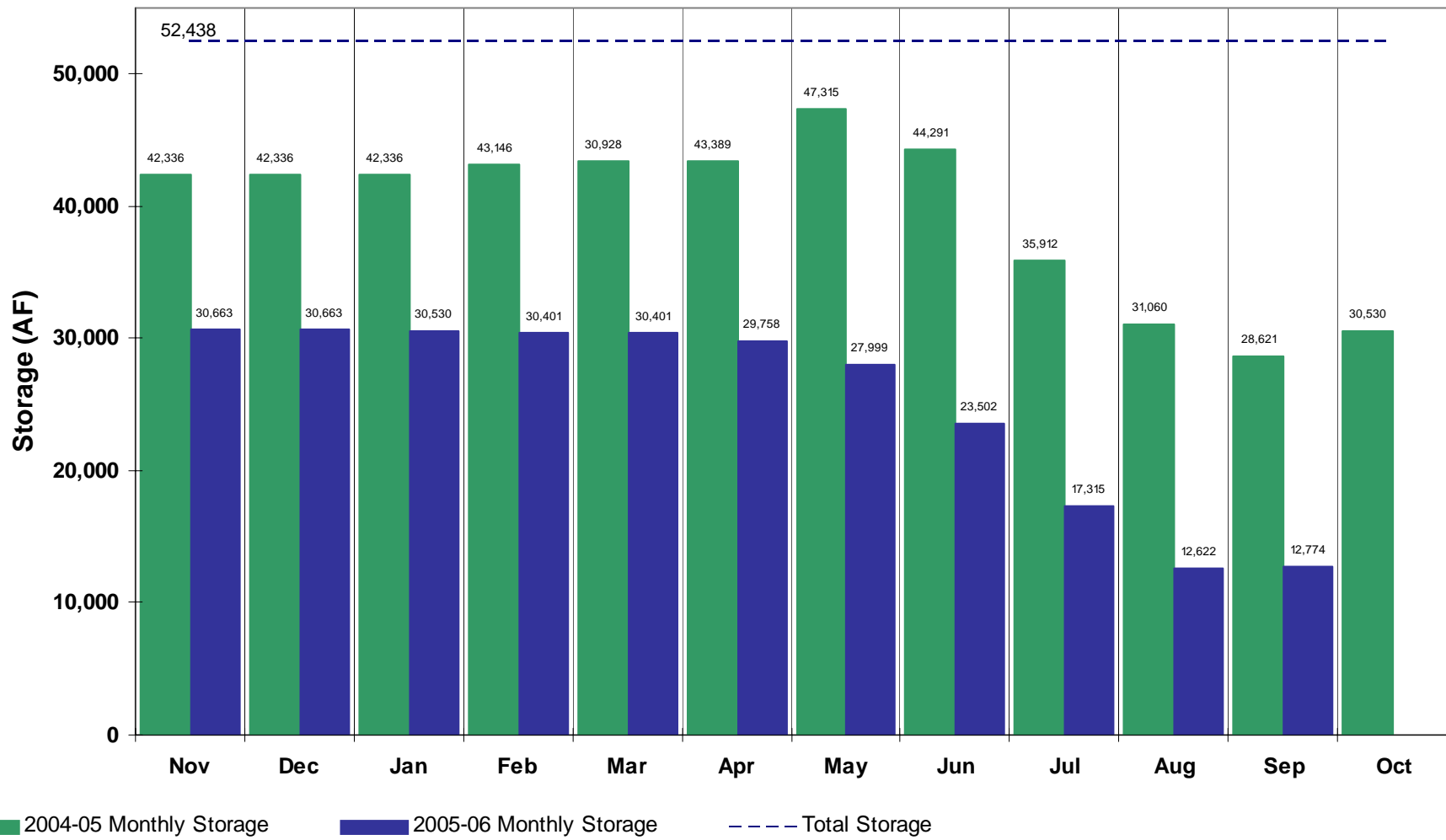
Standley Lake (Agricultural)



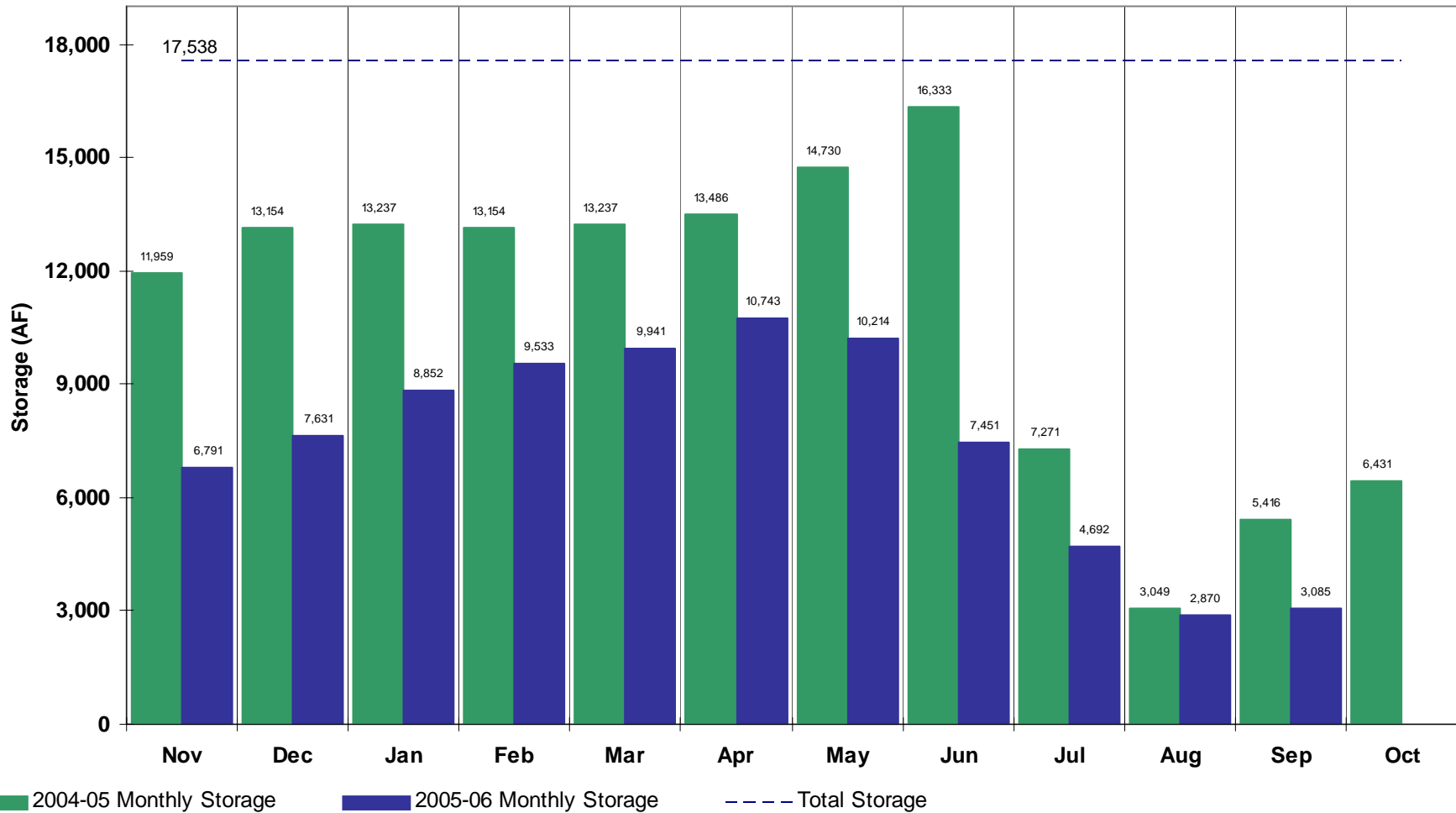
Lower Latham Reservoir (Agricultural)



Boyd Lake (Agricultural)

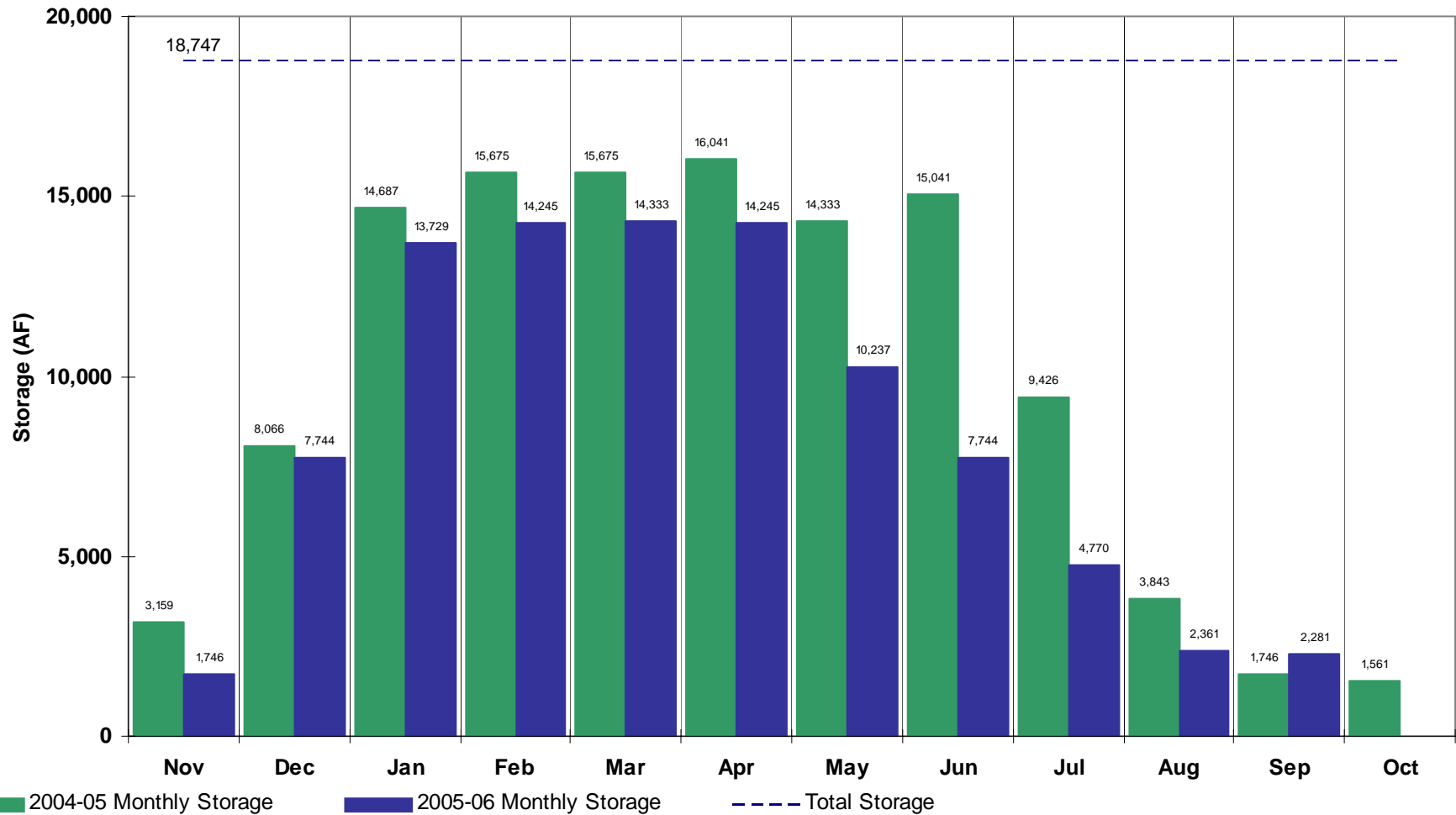


Windsor Reservoir (Agricultural)

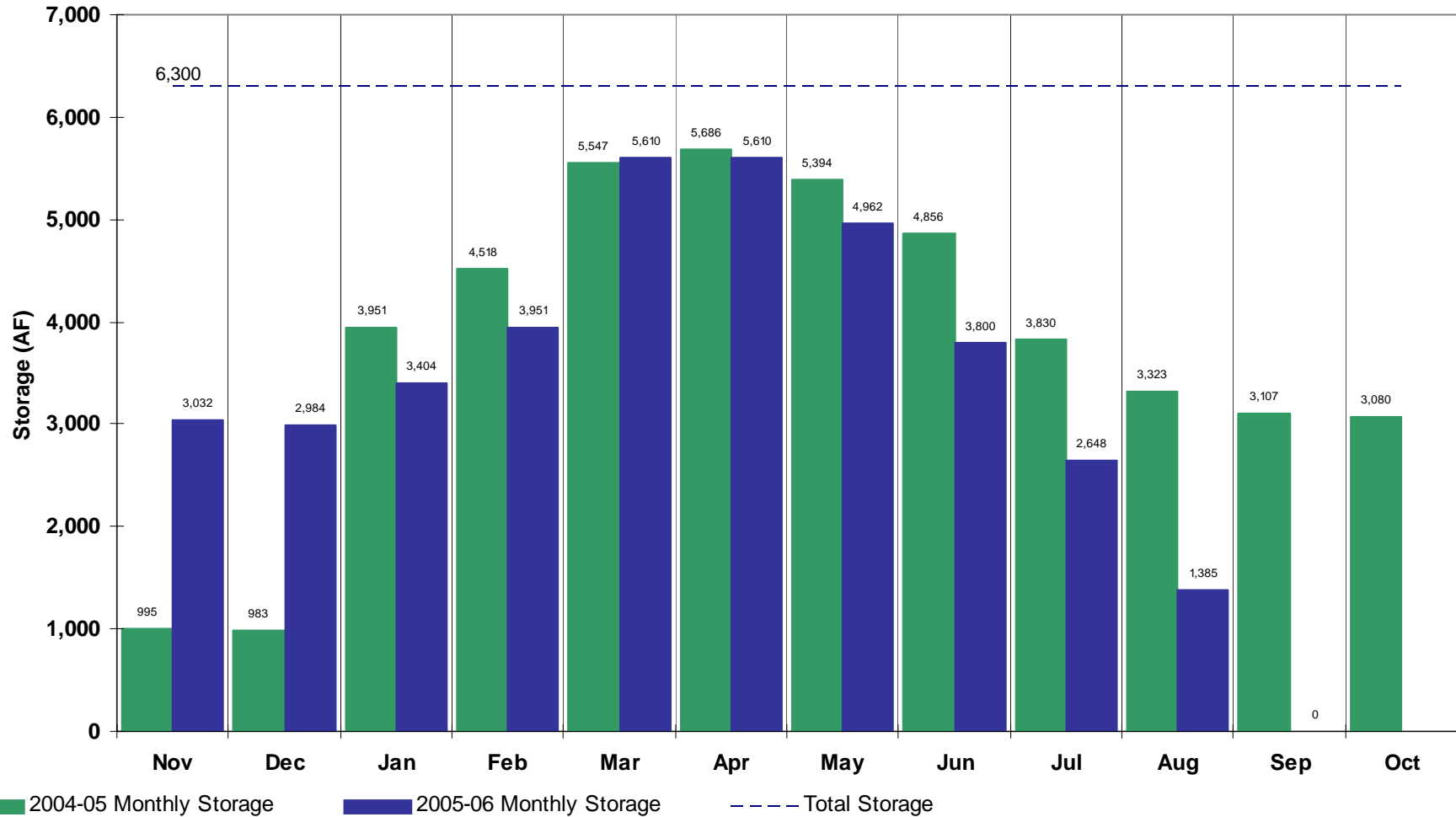


Horse Creek Reservoir

(Agricultural)

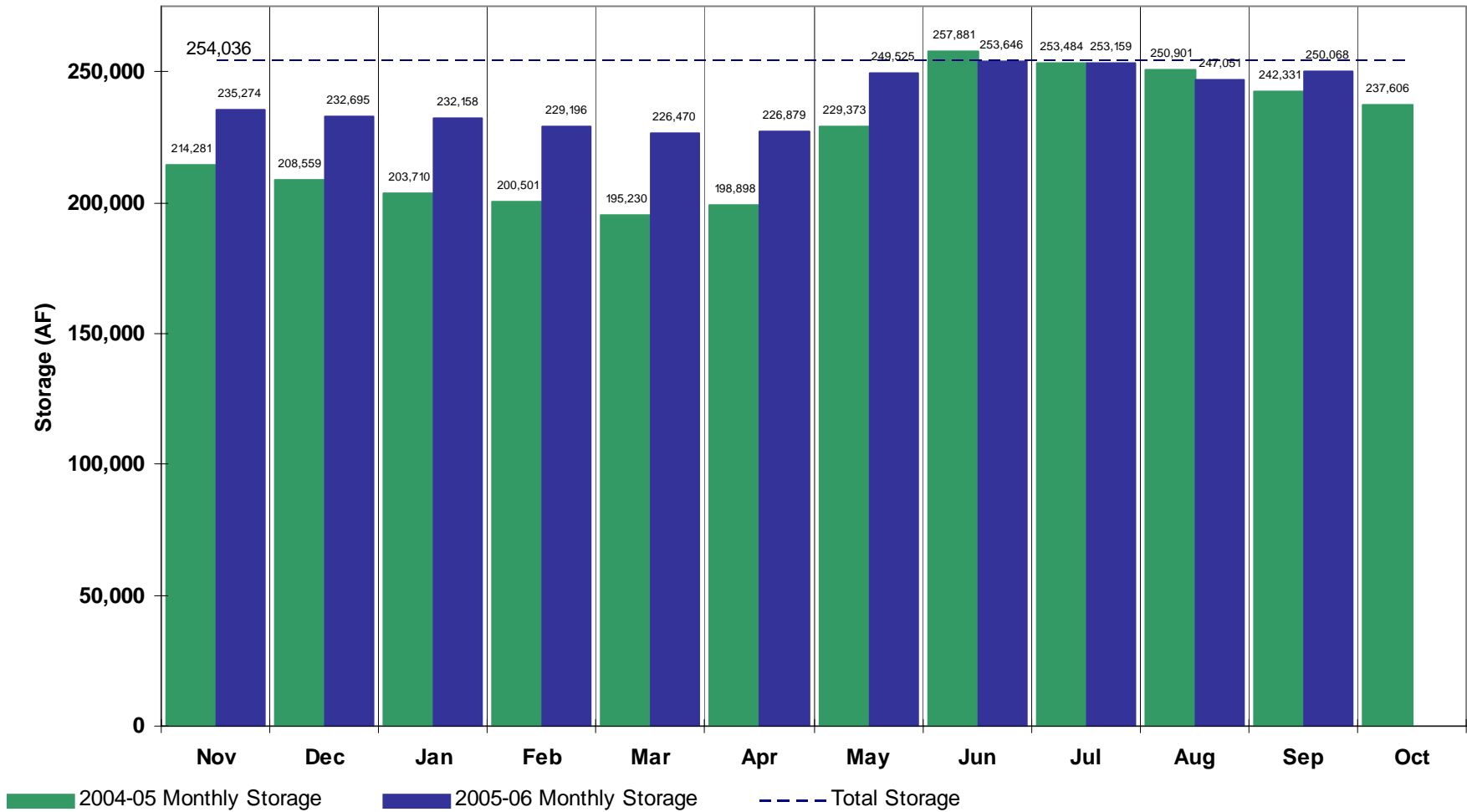


Prospect Reservoir (Agricultural)

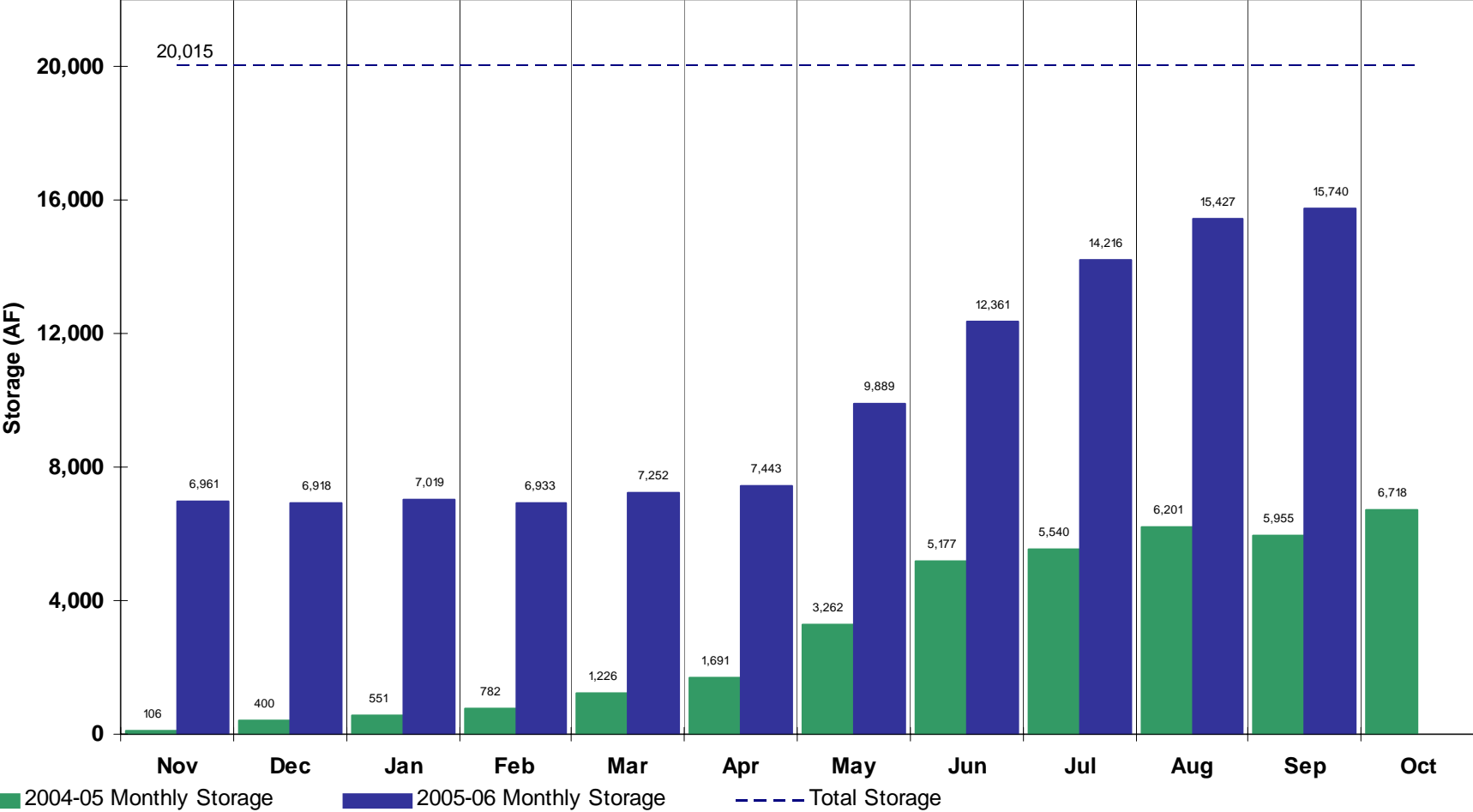


Dillon Reservoir

(Municipal)

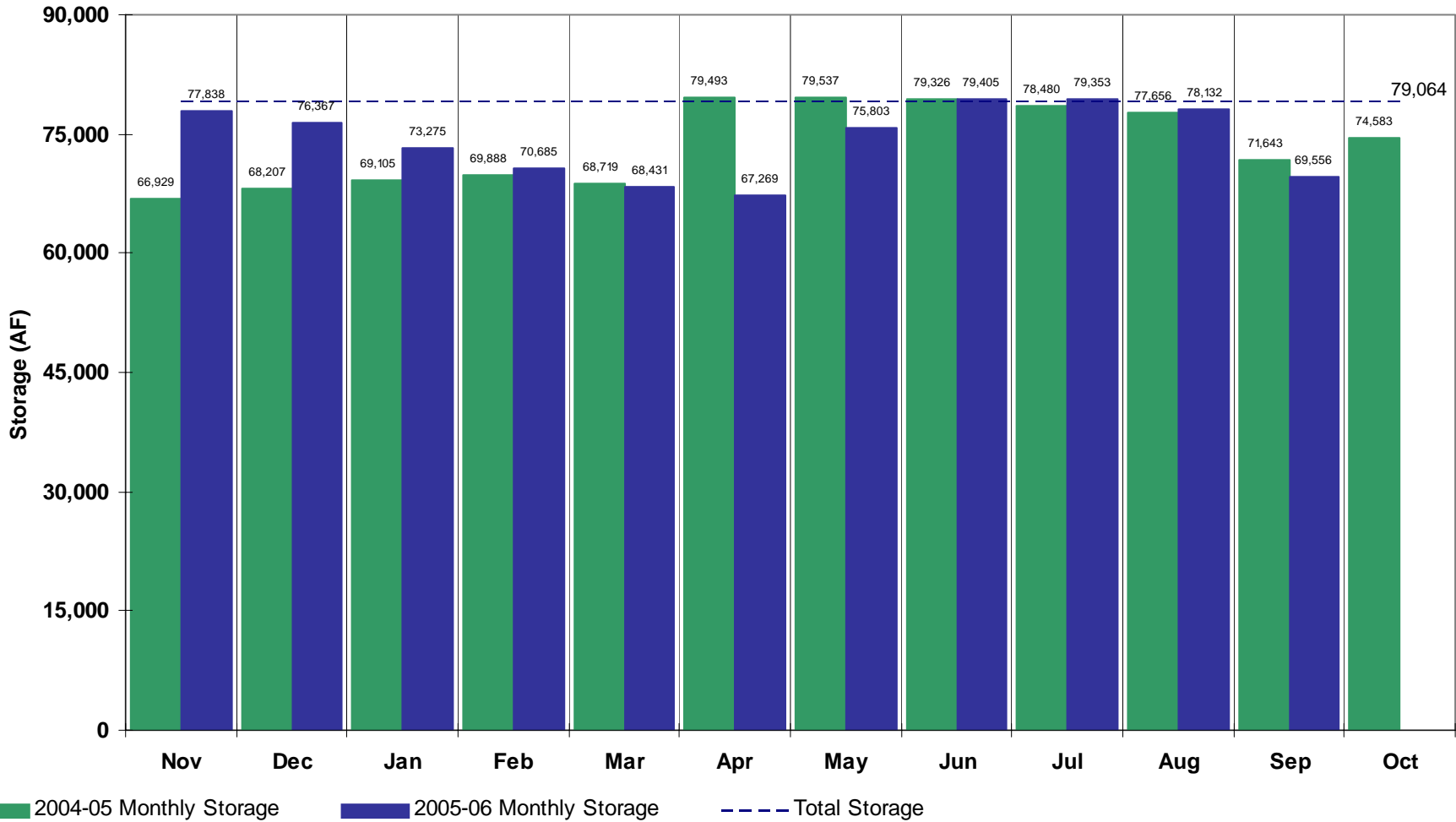


Antero Reservoir (Municipal)



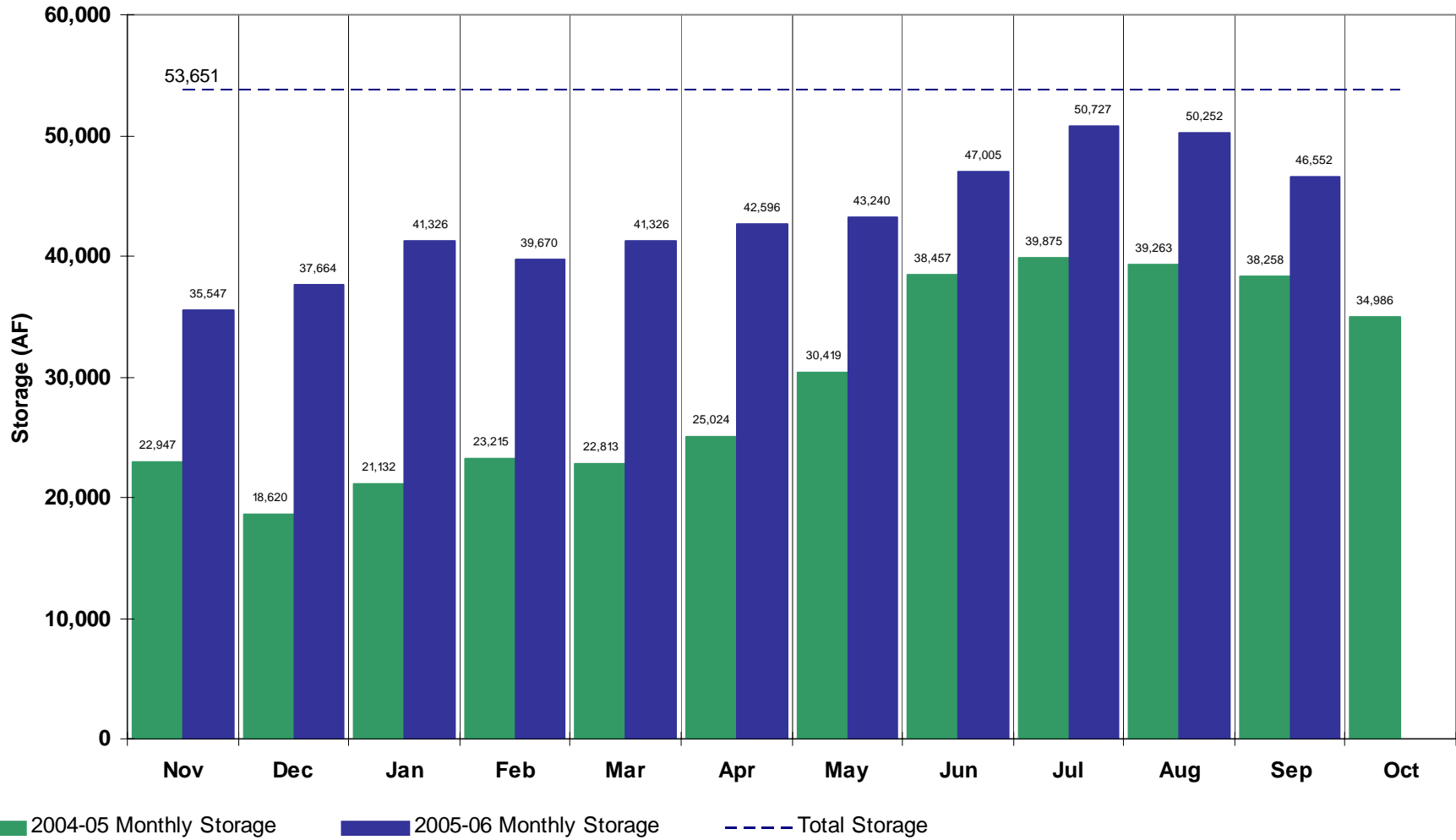
Cheesman Reservoir

(Municipal)

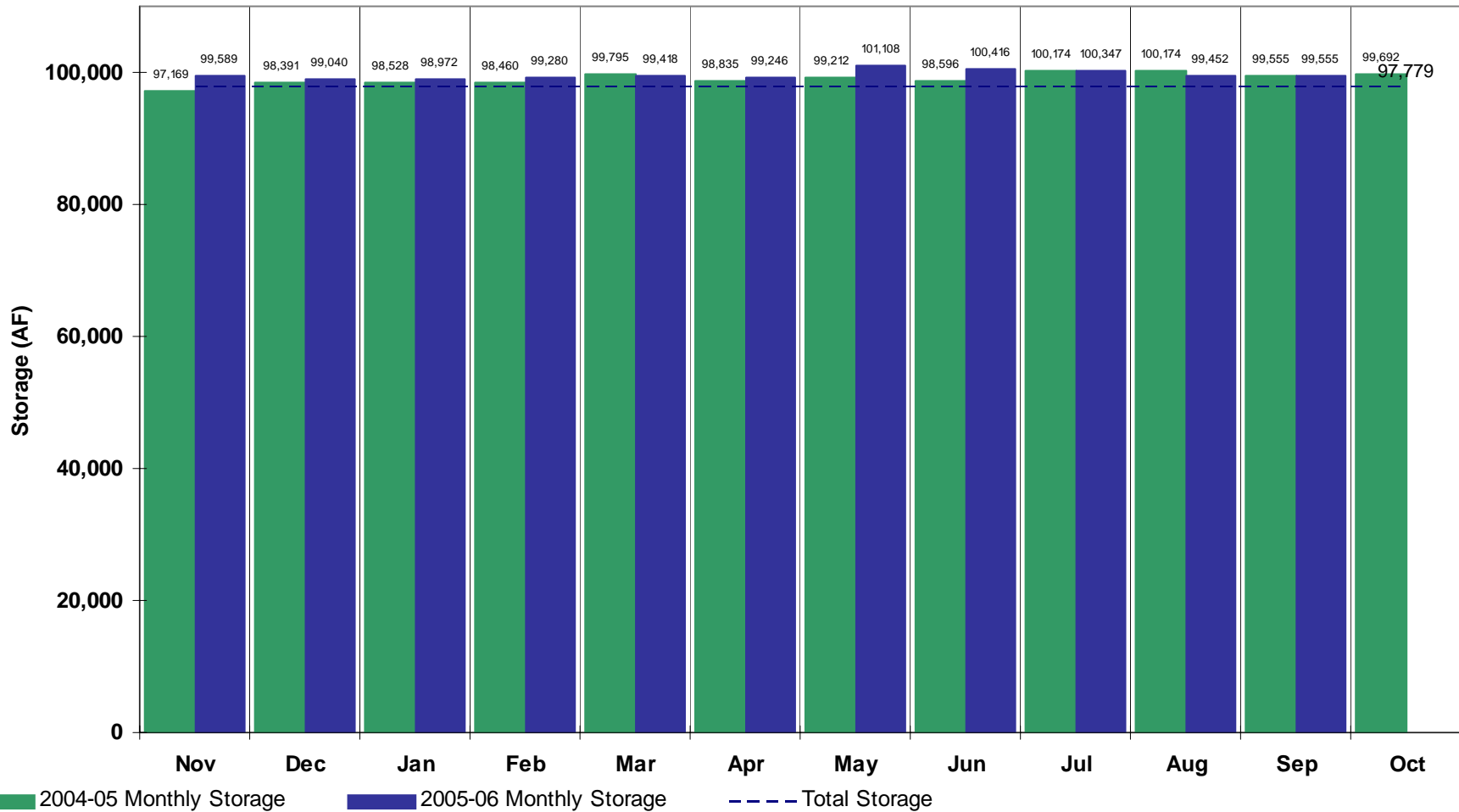


Spinney Mountain Reservoir

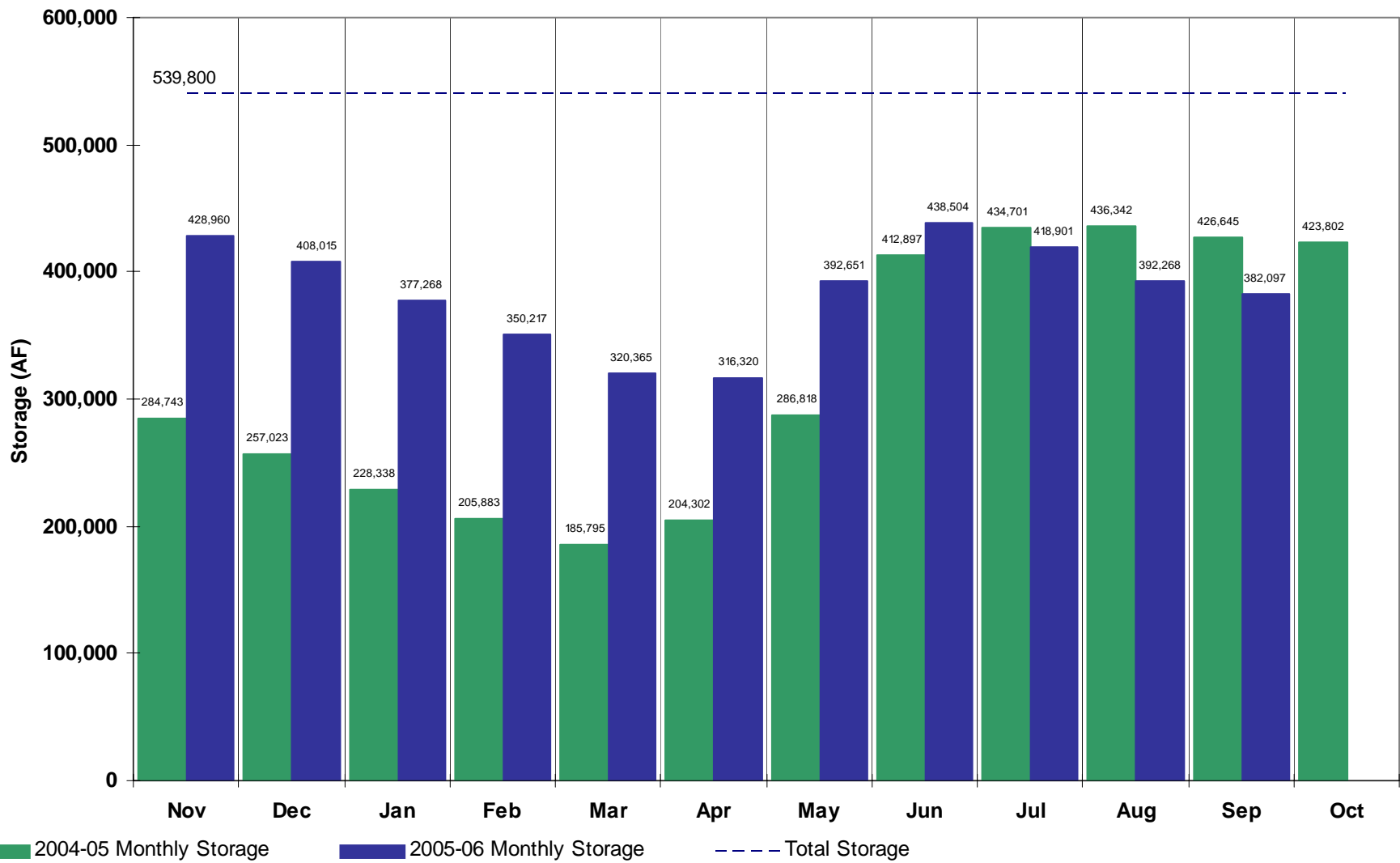
(Municipal)



Eleven Mile Reservoir (Municipal)



Lake Granby



**All data is collected by the personnel
of Division 1 and is subject to revision.**

