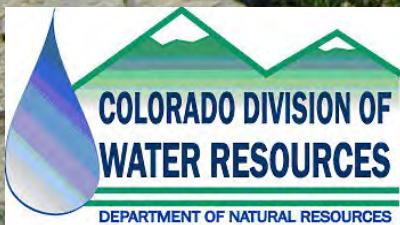


South Platte Summary

August 2006

By David Ellington



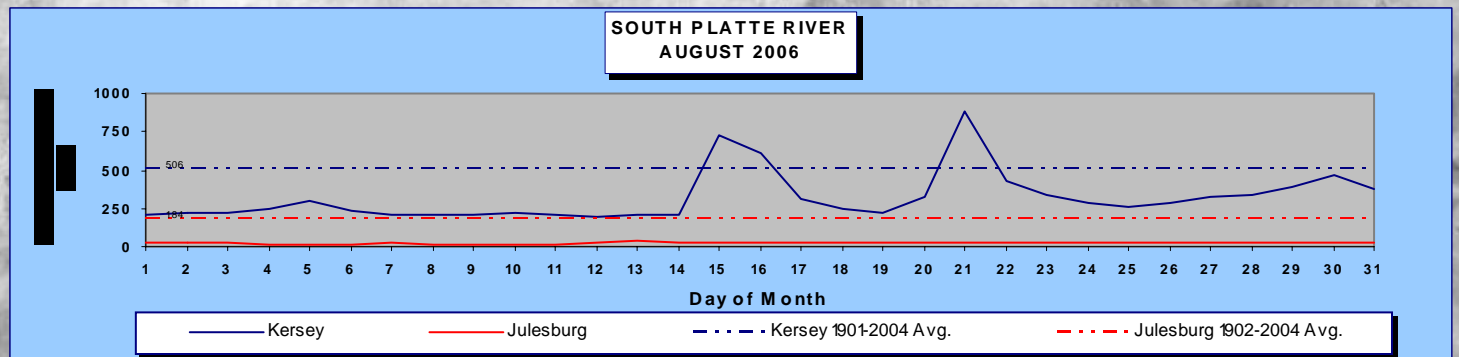
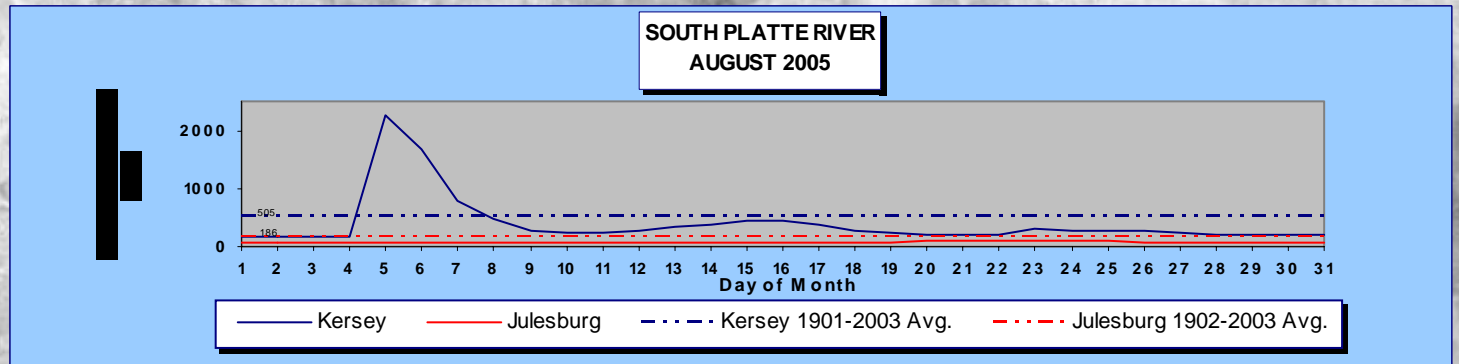
Left Hand Park Reservoir and Dam
(photo by John Batka)

COLORADO DIVISION OF WATER RESOURCES, DIVISION 1

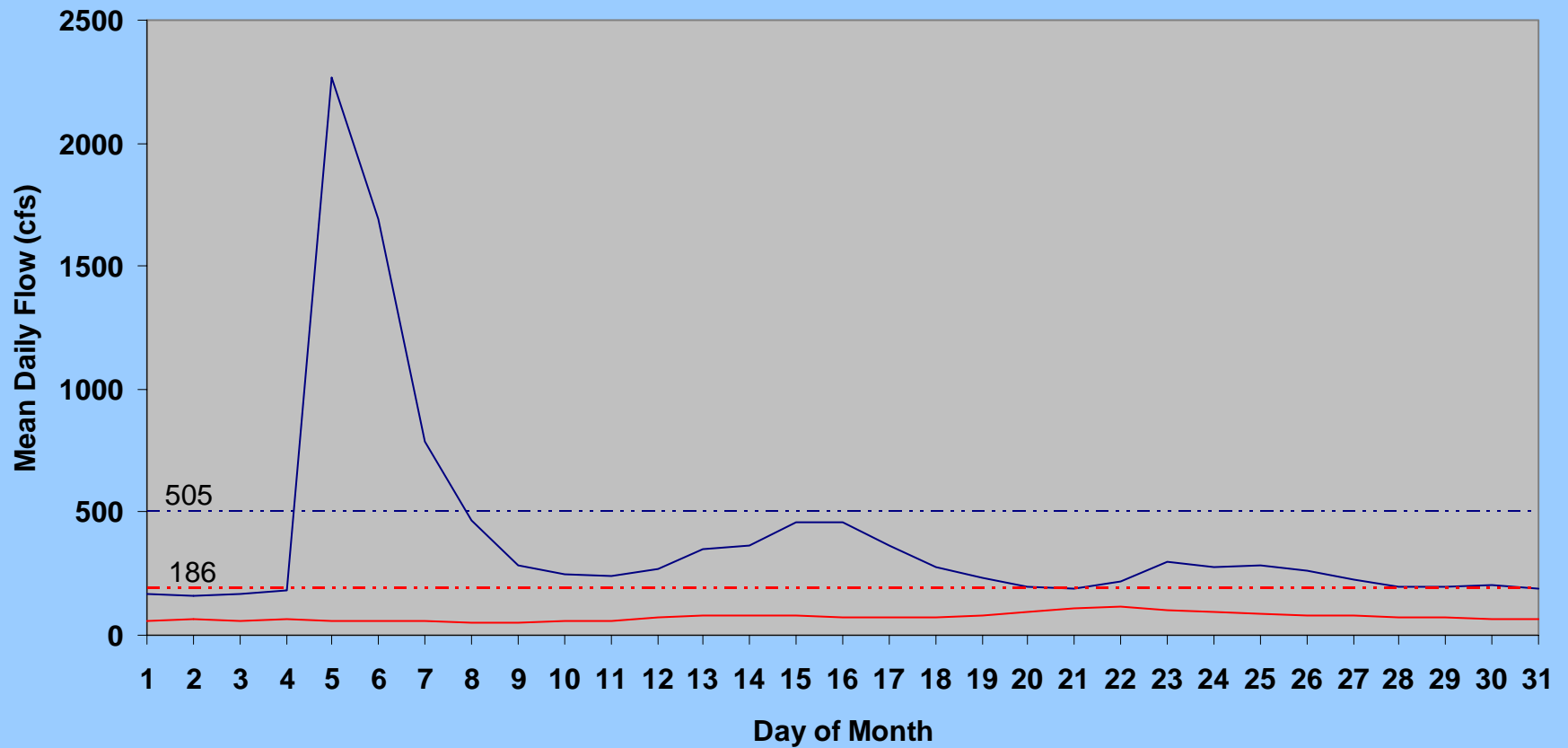
MONTH OF AUGUST 2006

RESERVOIR	FULL ALLOWABLE CAPACITY (ACRE FEET)	FIRST OF MONTH (ACRE FEET)	END OF MONTH (ACRE FEET)	DISTRICT	CHANGE IN STORAGE (ACRE FEET)	% CHANGE IN STORAGE BASED ON FIRST OF MONTH STORAGE	% OF CURRENT FULL ALLOWABLE CAPACITY	% OF CURRENT FULL ALLOWABLE CAPACITY THIS MONTH LAST YEAR	SURCHARGE (ACRE FEET)
JULESBURG	22,666	5,894	0	64	-5,894	-100%	0%	39%	0
N STERLING	73,730	20,160	3,430	64	-16,730	-83%	5%	38%	0
PREWITT	28,500	9,240	5,339	64	-3,901	-42%	19%	50%	0
JACKSON	27,257	10,870	0	1	-10,870	-100%	0%	52%	0
EMPIRE	37,700	0	0	1	0	0%	0%	16%	0
RIVERSIDE	63,113	18,028	9,530	1	-8,498	-47%	15%	40%	0
BARR LAKE	31,652	7,079	4,067	2	-3,012	-43%	13%	32%	0
CHEESMAN	79,064	79,353	78,132	80	-1,221	-2%	99%	98%	0
ELEVEN MLE	97,779	100,347	99,452	23	-895	-1%	100%	100%	1,673
SPINNEY	53,651	50,727	50,252	23	-475	-1%	94%	73%	0
ANTERO	20,015	14,216	15,427	23	1,211	9%	77%	31%	0

RIVER GAGES	MEAN DAILY FLOW (CFS)
KERSEY	320
JULESBURG	25
THIS MONTH LAST YEAR	
KERSEY	391
JULESBURG	73
MEAN FOR PERIOD OF RECORD*	
KERSEY	506
JULESBURG	184
* 1901-2004	
1902-2004	

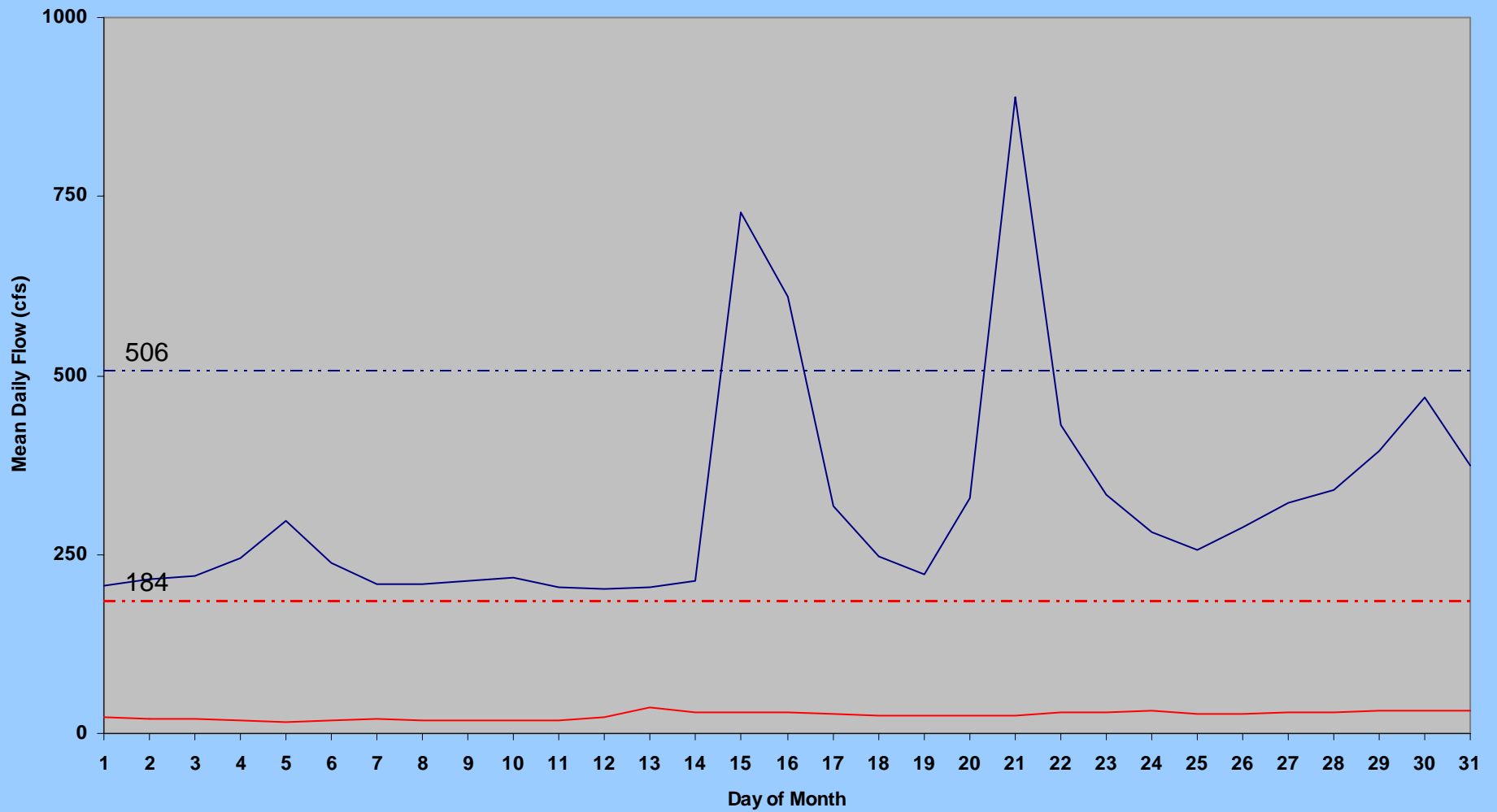


SOUTH PLATTE RIVER AUGUST 2005



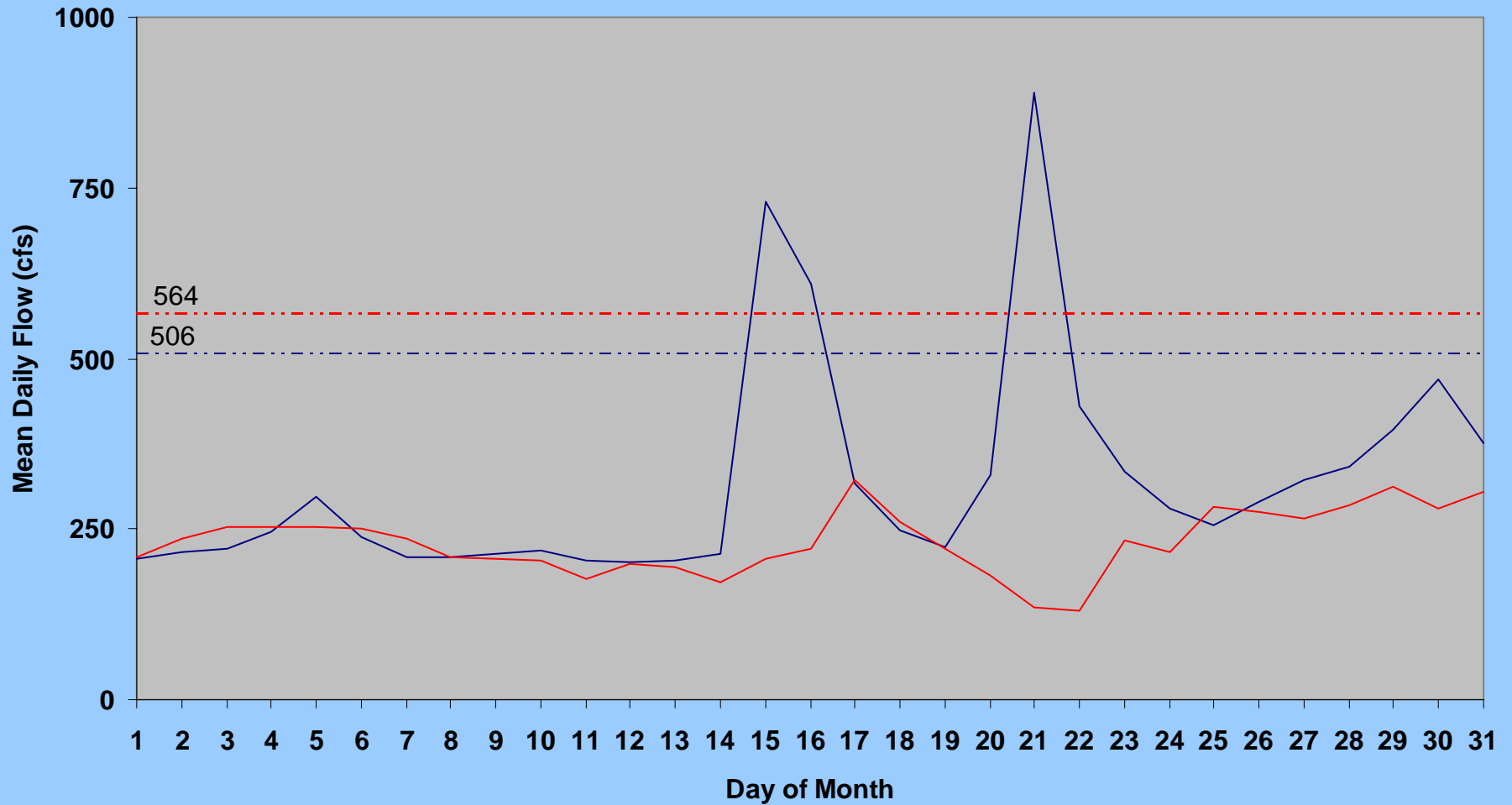
— Kersey — Julesburg - - - Kersey 1901-2003 Avg. - - - Julesburg 1902-2003 Avg.

SOUTH PLATTE RIVER AUGUST 2006



— Kersey — Julesburg - - - Kersey 1901-2004 Avg. - - - Julesburg 1902-2004 Avg.

KERSEY and BALZAC AUGUST 2006



— Kersey — Balzac - - - Kersey 1901-2004 Avg. - - - Balzac 1981-2004 Avg.

Lonhagler Reservoir (photo by John Batka)



South Platte River Monthly Stream Flow (cfs) Statistics

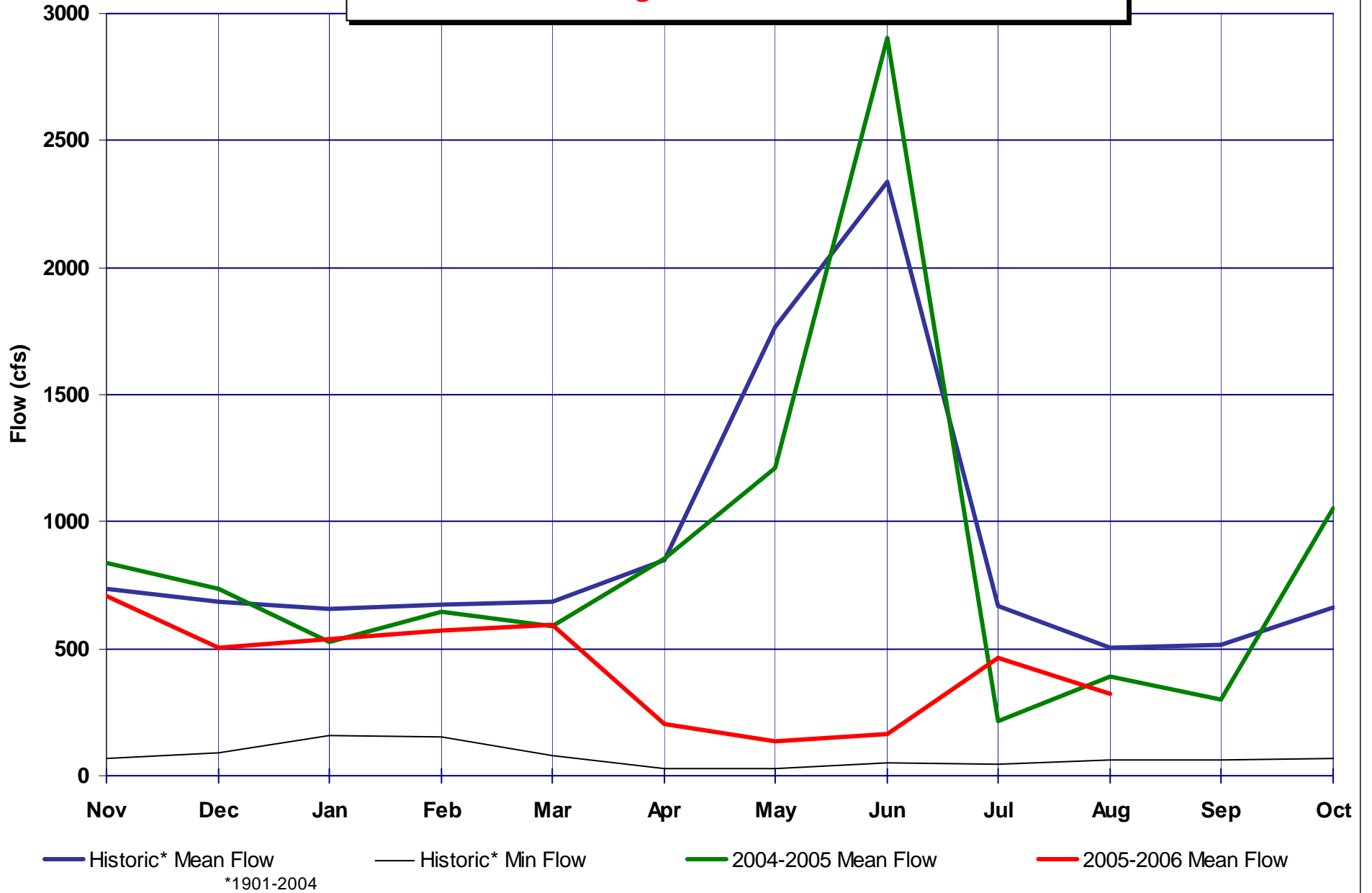
South Platte River at Kersey							South Platte River at Julesburg						
Month	Historic* Mean Flow	Historic* Max Flow	Year	Historic* Min Flow	Year	IY 2006 Mean Monthly Flow	Month	Historic* Mean Flow	Historic* Max Flow	Year	Historic* Min Flow	Year	IY 2006 Mean Monthly Flow
Nov	737	3650	1984	70	1934	709	Nov	346	2900	1984	4.2	1903	71
Dec	684	1890	1961	91	1934	502	Dec	408	1820	1984	13	2002	165
Jan	656	2160	1974	158	1935	537	Jan	526	2510	1970	21	2003	98
Feb	673	3060	1914	152	1935	569	Feb	604	3220	1930	22	2004	115
Mar	686	3470	1983	80	1935	592	Mar	545	12900	1910	15	1904	100
Apr	849	18100	1942	28	1955	204	Apr	540	14400	1942	4.0	1904	144
May	1766	26100	1973	29	1955	138	May	1043	18100	1973	12	1911	174
Jun	2336	31000	1921	52	1954	165	Jun	1459	30800	1921	2.0	1910	34
Jul	670	12600	1983	44	1955	462	Jul	300	12600	1983	0.0	1903	31
Aug	506	9690	1951	65	1934	320	Aug	184	8920	1968	0.0	1903	25
Sep	517	14200	1938	62	1940		Sep	245	7130	1938	2.0	1902	
Oct	662	6180	1984	66	1954		Oct	308	3130	1984	4.2	1903	

*Period of record 1901-2004

*Period of record 1902-2004

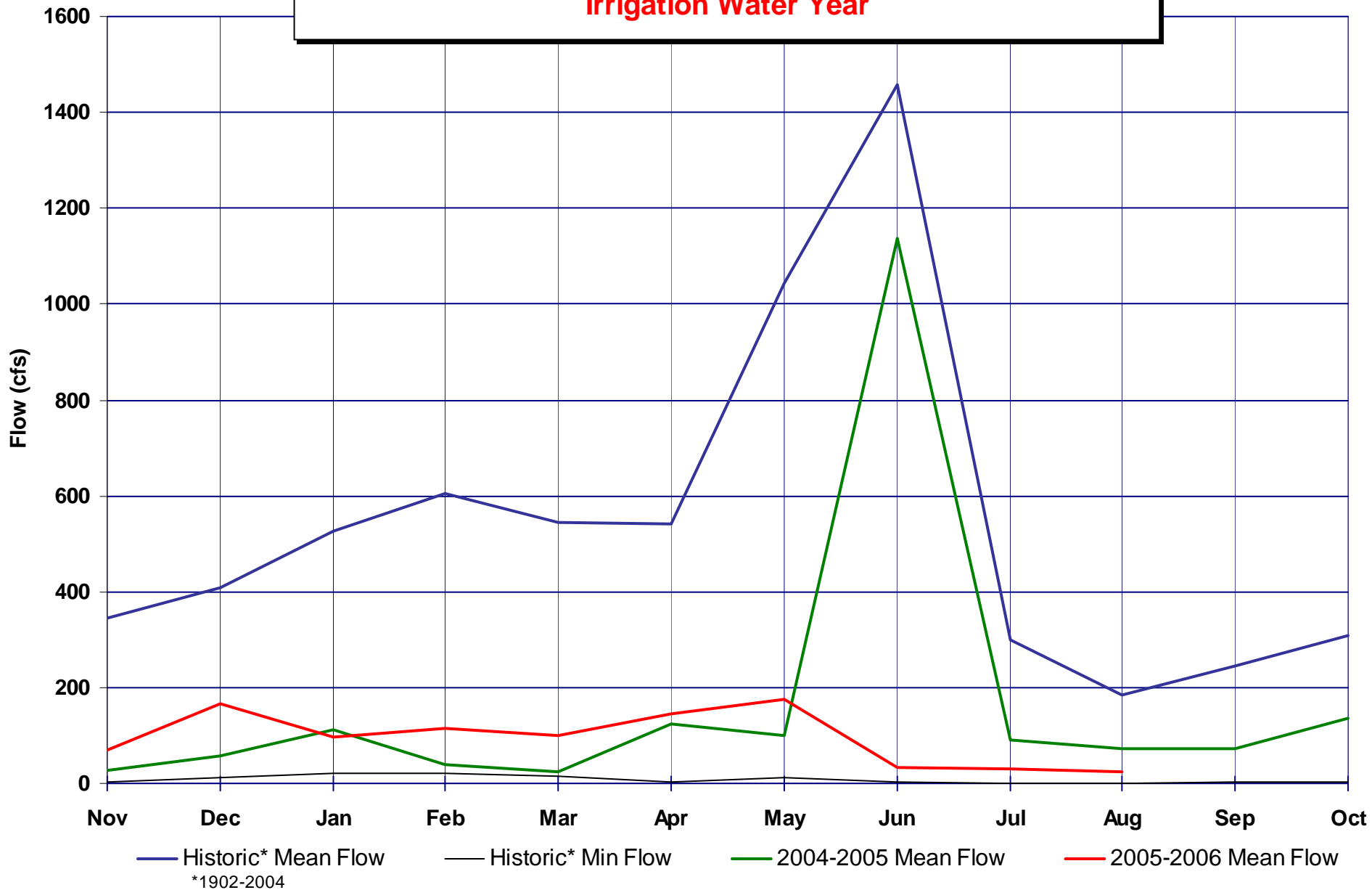
South Platte River at Kersey

Irrigation Water Year

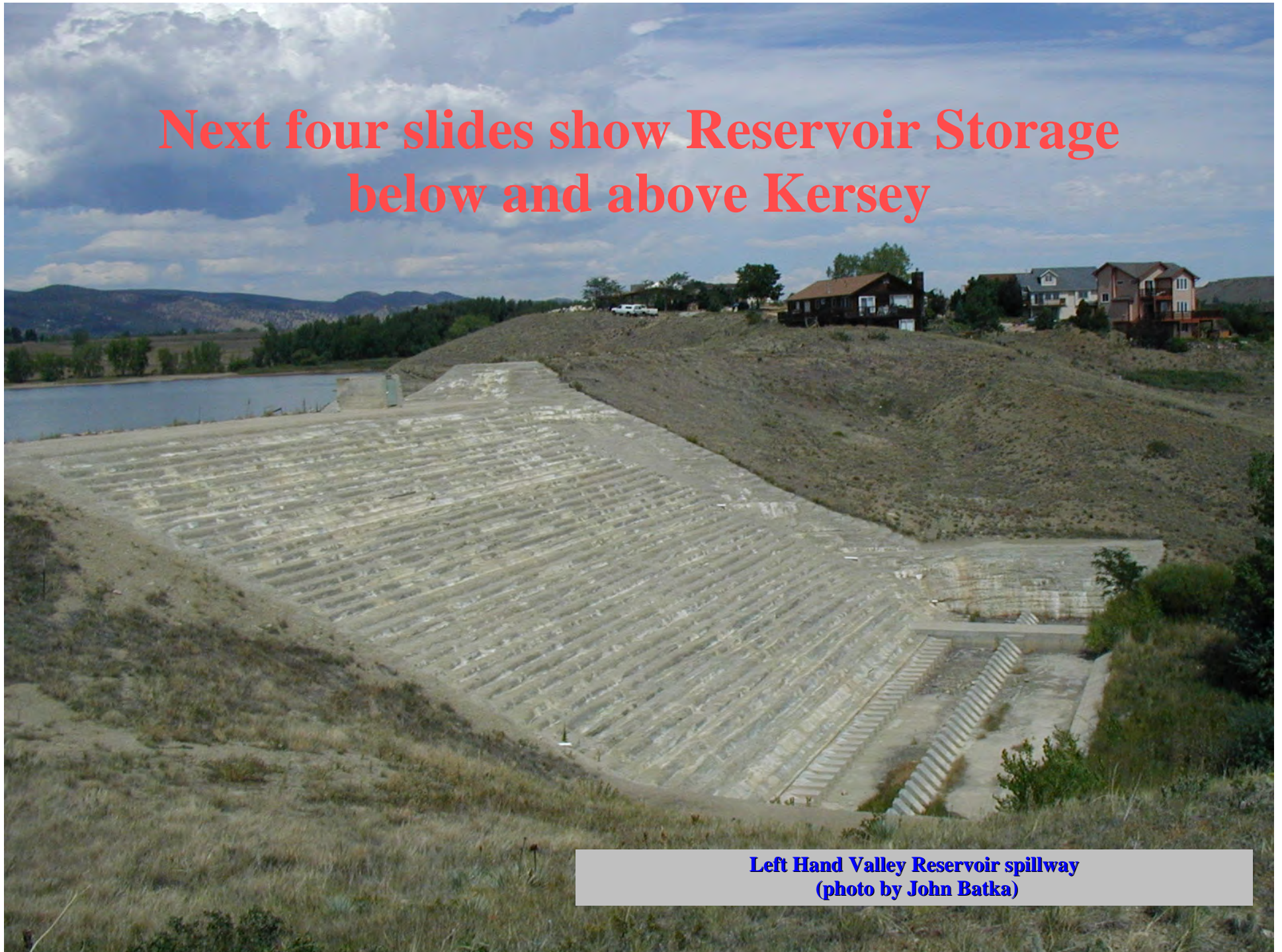


South Platte River at Julesburg

Irrigation Water Year



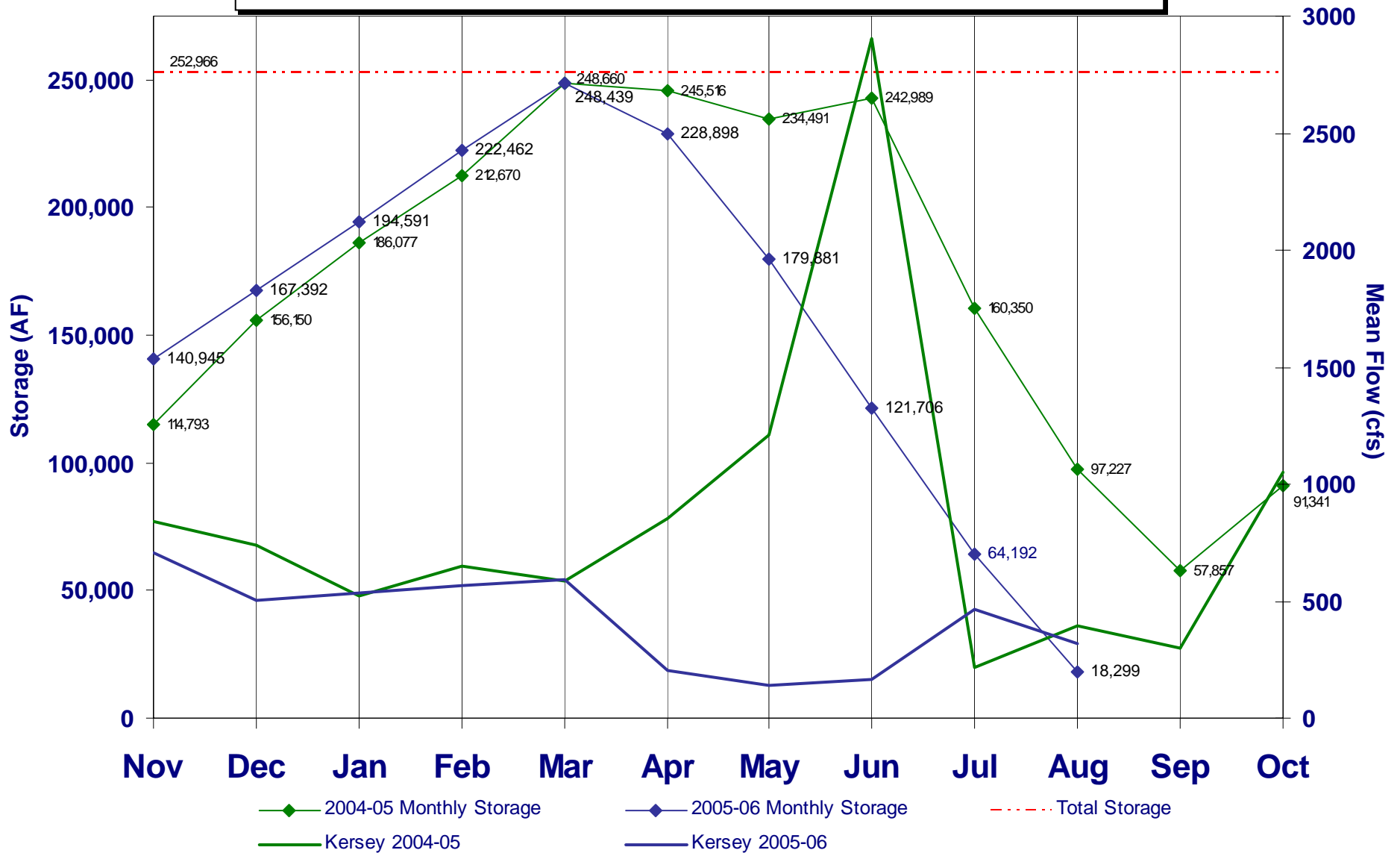
**Next four slides show Reservoir Storage
below and above Kersey**



**Left Hand Valley Reservoir spillway
(photo by John Batka)**

Reservoir Storage below Kersey

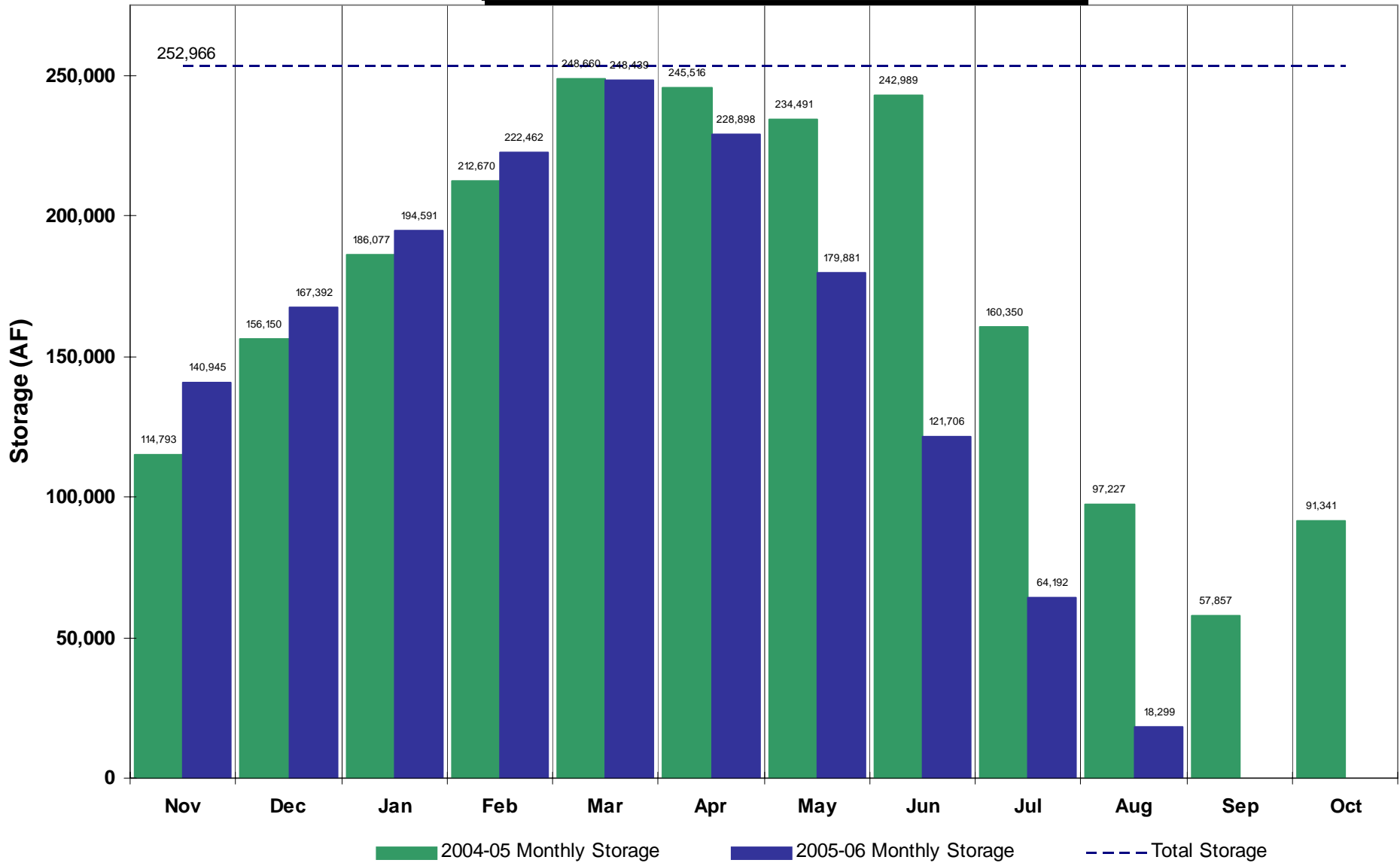
Selected Reservoirs*



*Empire, Riverside, Jackson, Prewitt, North Sterling, & Julesburg

South Platte Reservoirs

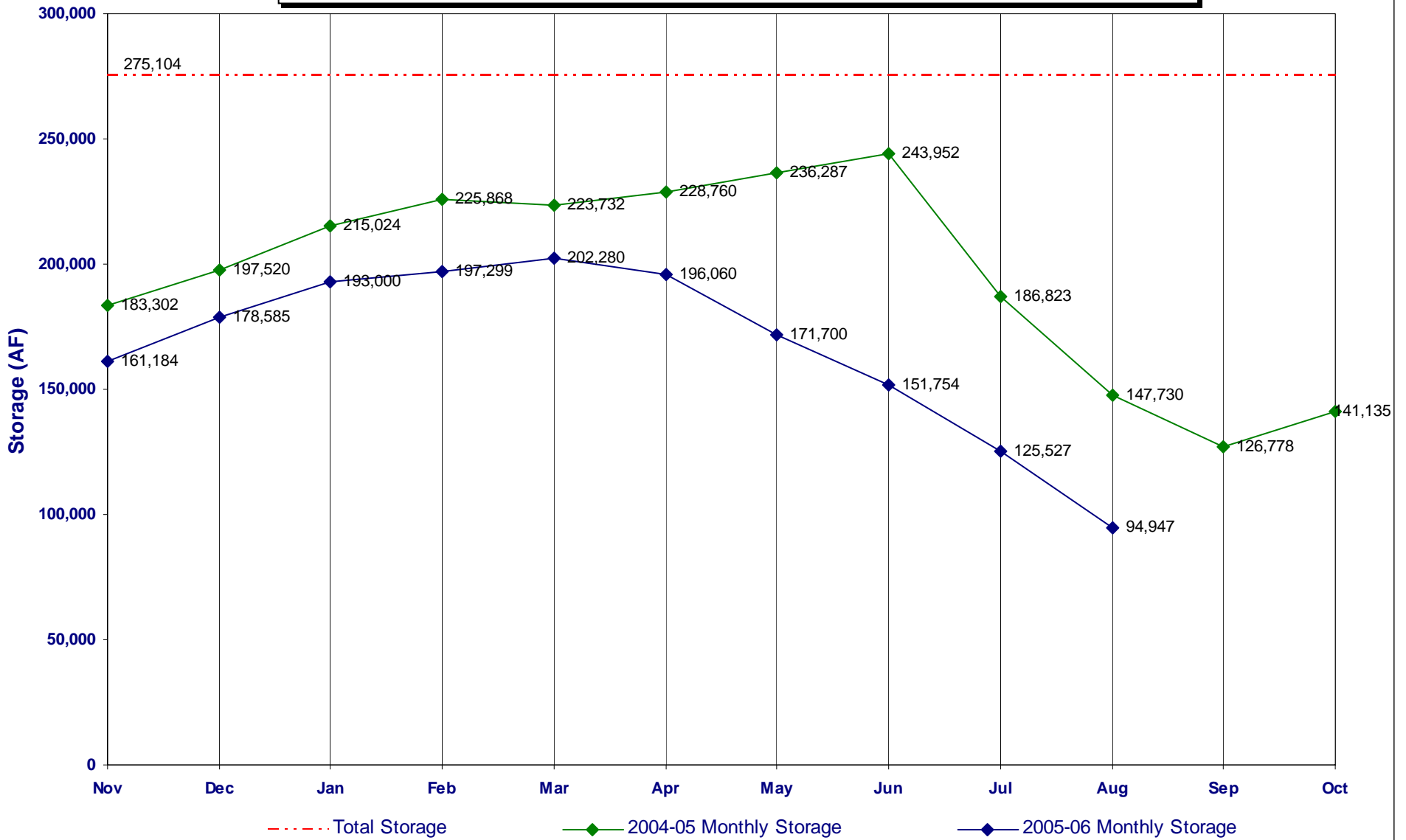
Storage below Kersey*



*Empire, Riverside, Jackson, Prewitt, North Sterling, & Julesburg

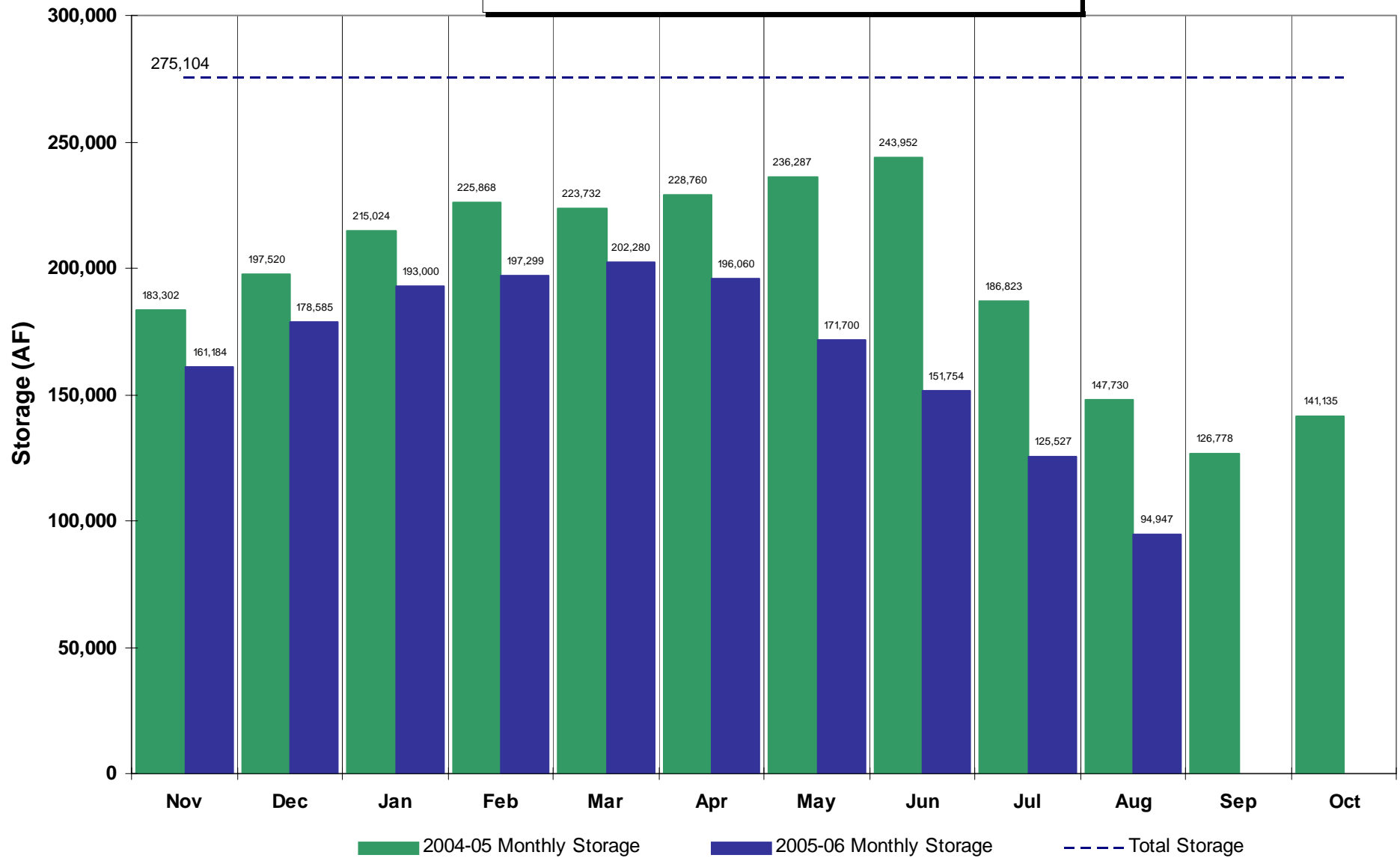
Reservoir Storage above Kersey

Selected Reservoirs*



*Barr, Cobb, Fossil Crk, Halligan, Marshall, Milton, Union, Standley, Lower Latham, Boyd, Loveland, Windsor, Horse Crk, & Prospect

South Platte Reservoirs Storage above Kersey*



*Barr, Cobb, Fossil Crk, Halligan, Marshall, Milton, Union, Standley, Lower Latham, Boyd, Loveland, Windsor, Horse Crk, &

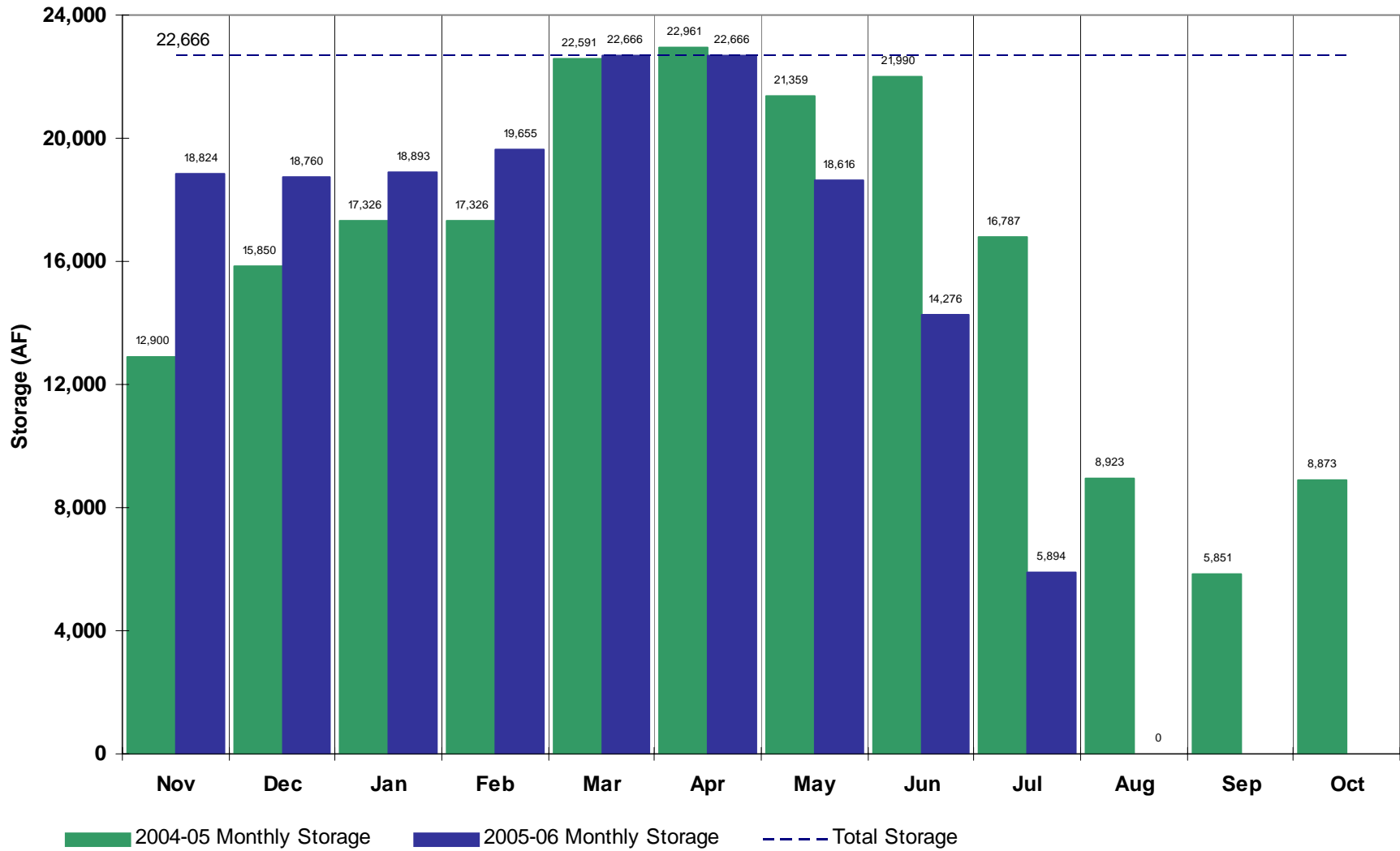
Individual Reservoir Storage Follows



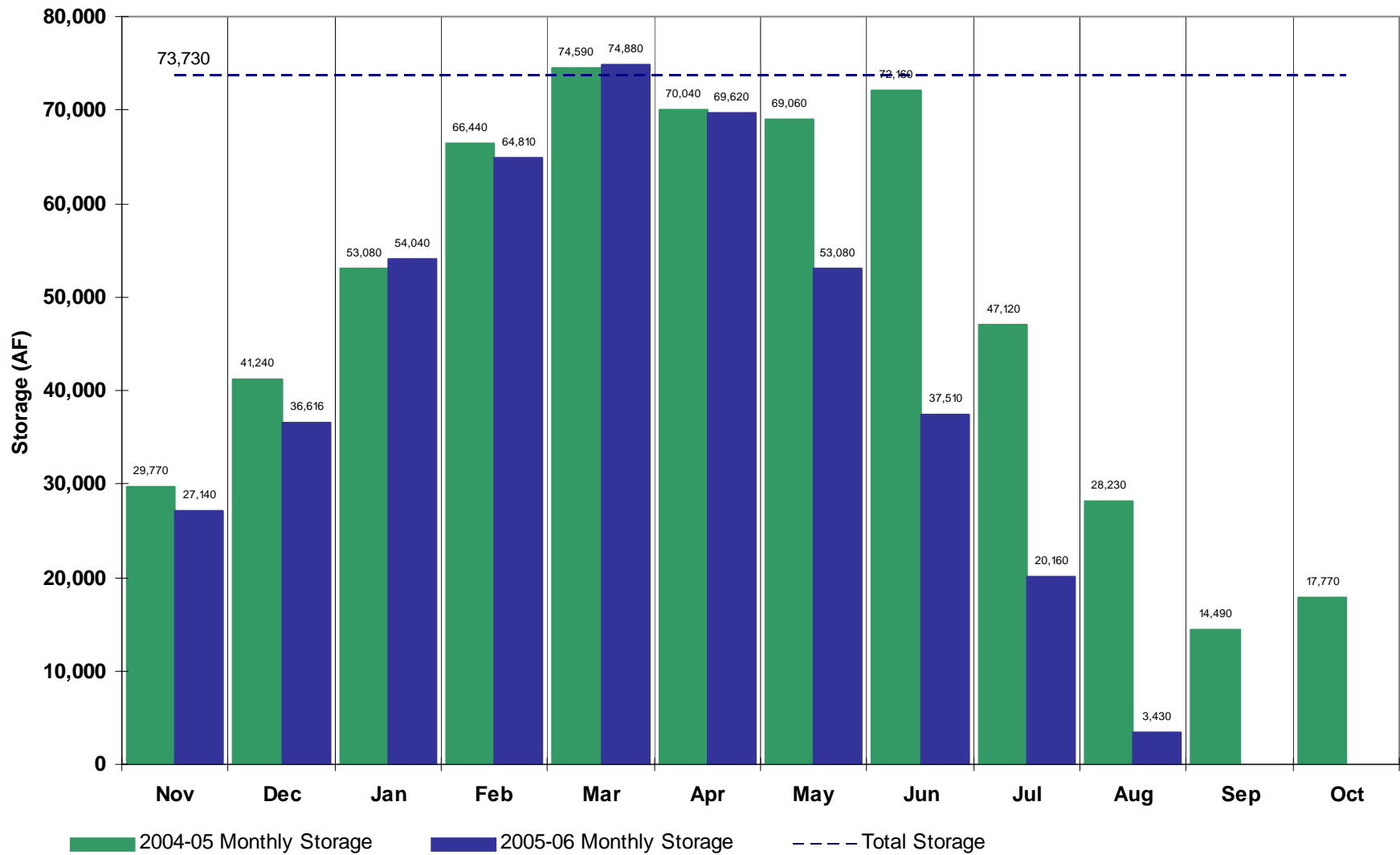
Foothills Reservoir Emergency Spillway
(photo by John Batka)

Julesburg Reservoir

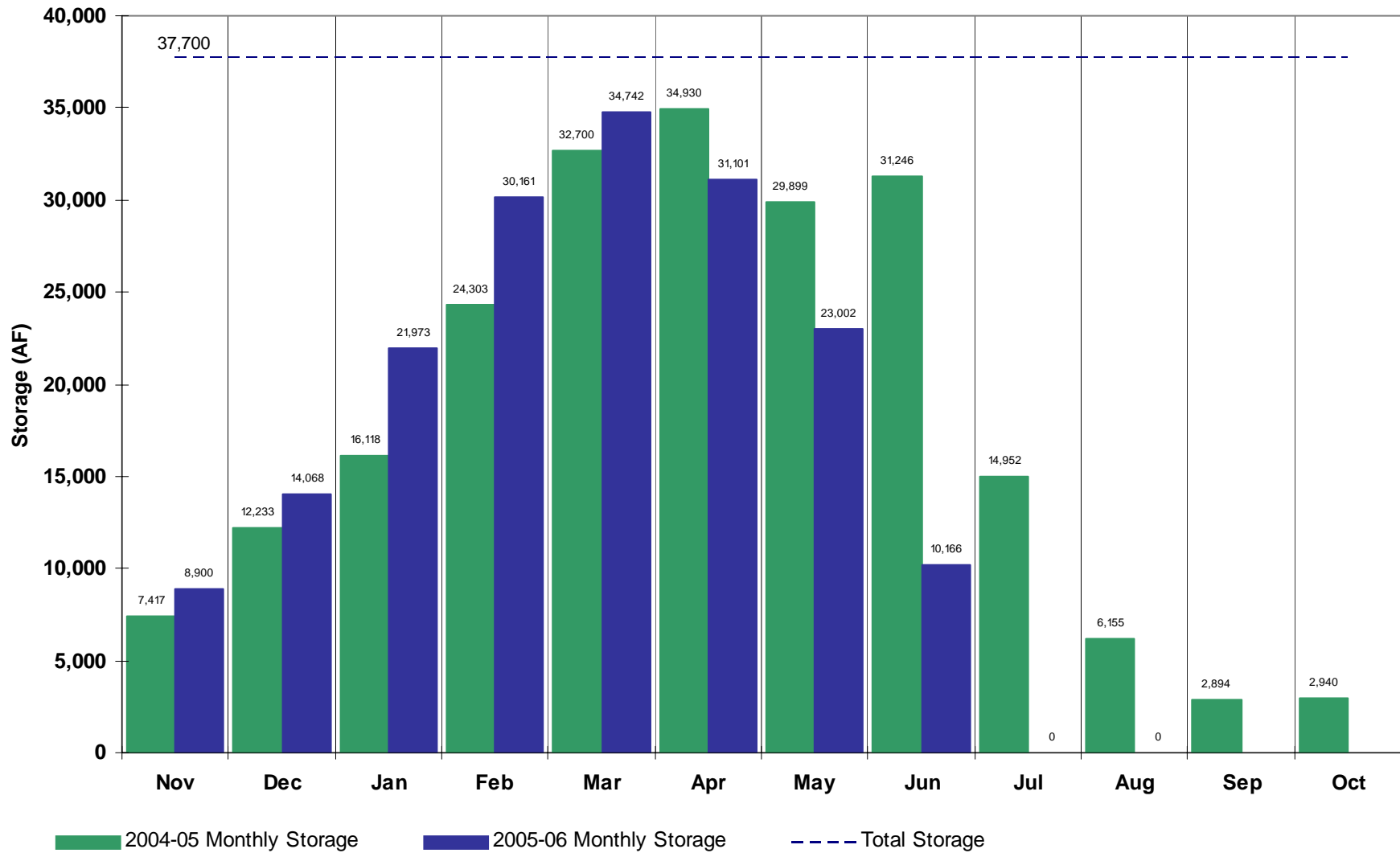
(Agricultural)



North Sterling Reservoir (Agricultural)

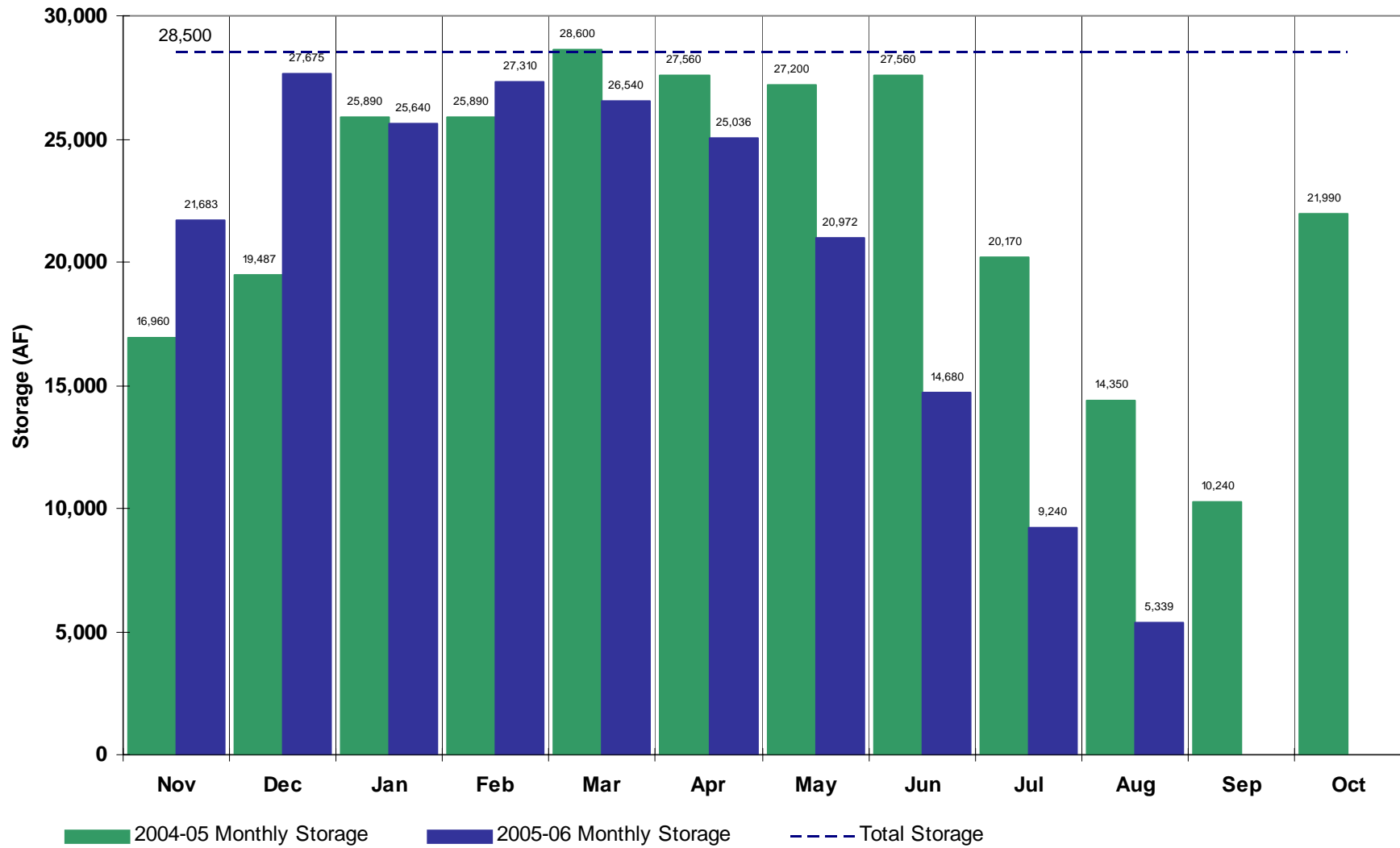


Empire Reservoir (Agricultural)



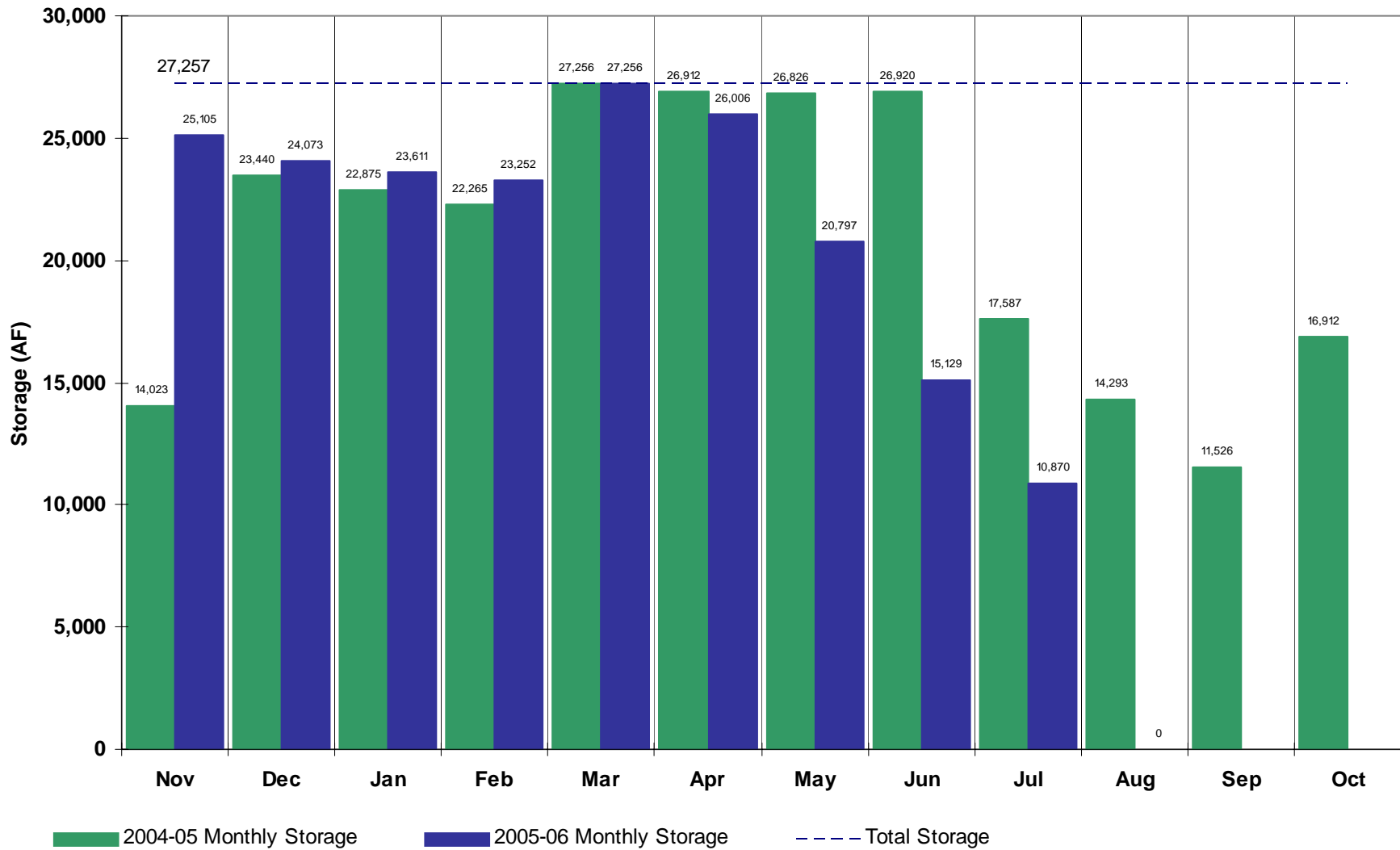
Prewitt Reservoir

(Agricultural)



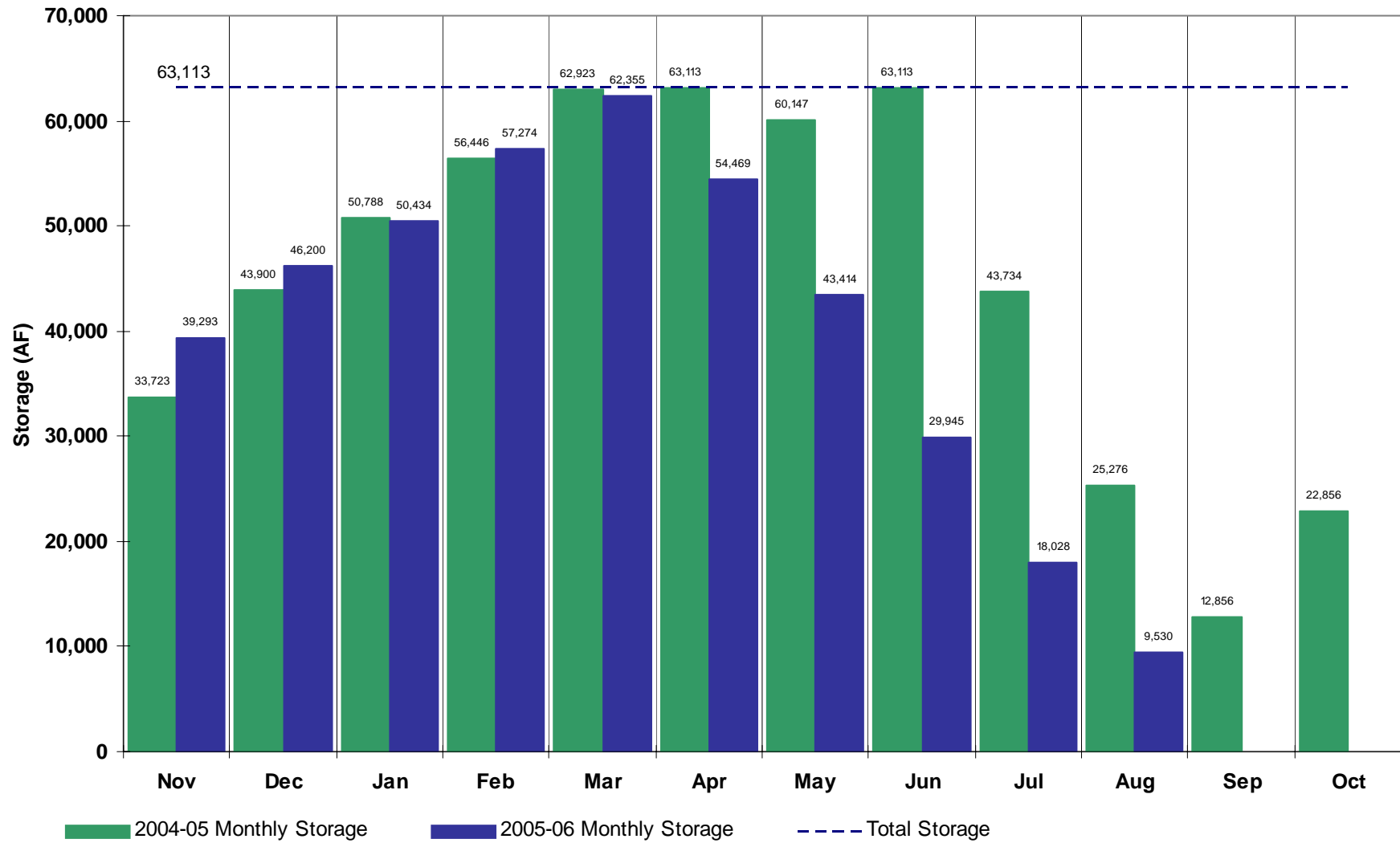
Jackson Reservoir

(Agricultural)

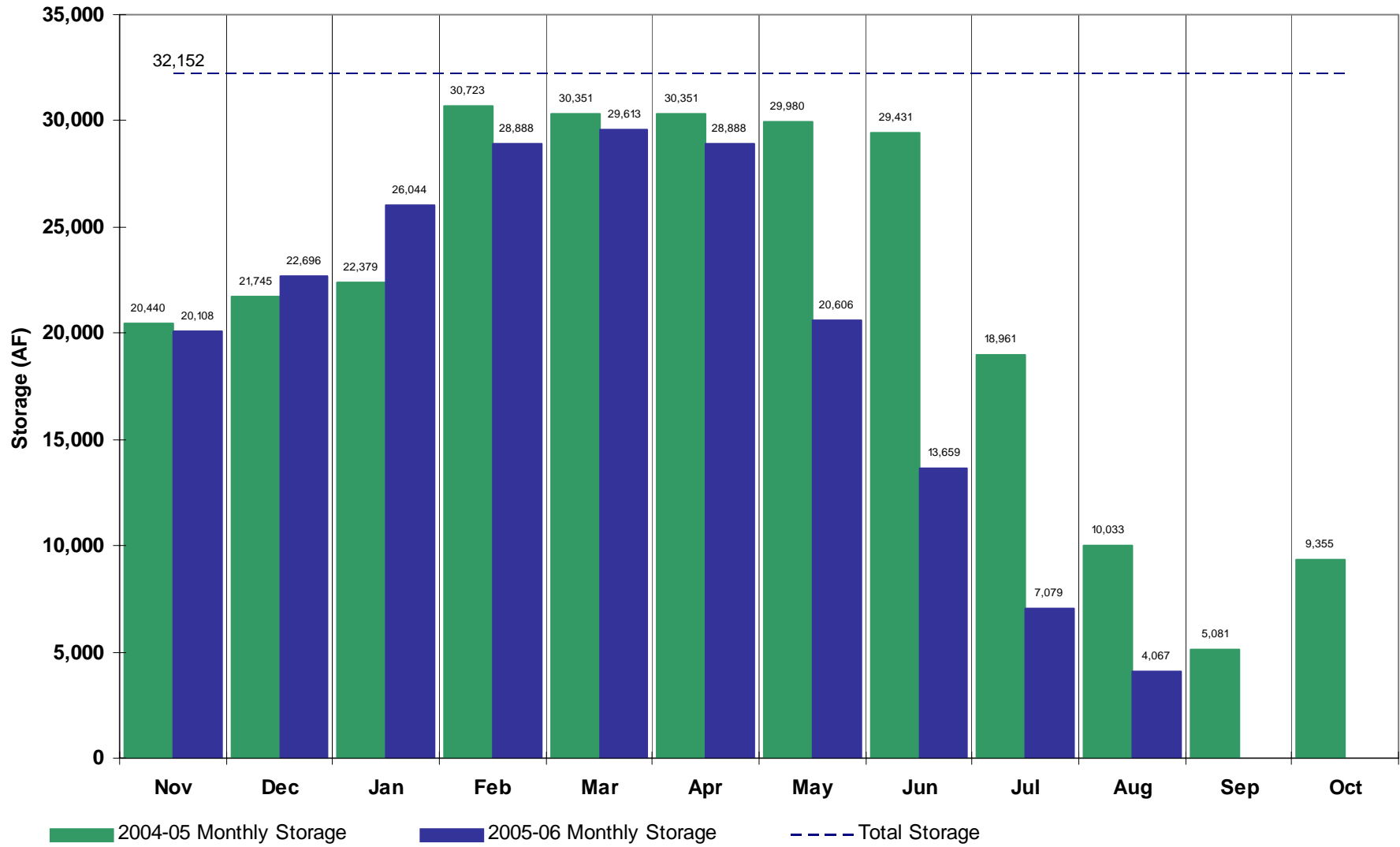


Riverside Reservoir

(Agricultural)

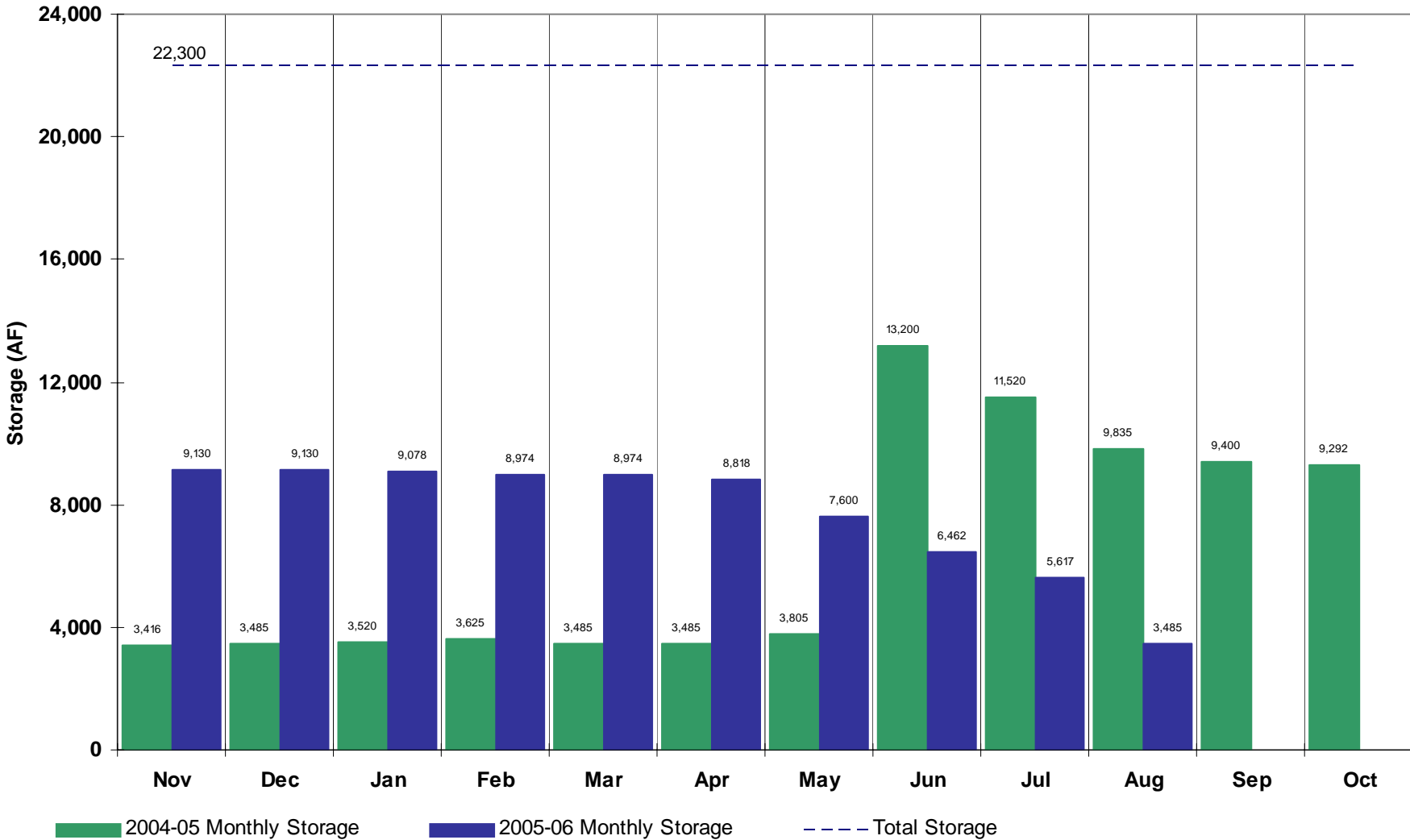


Barr Lake (Agricultural)

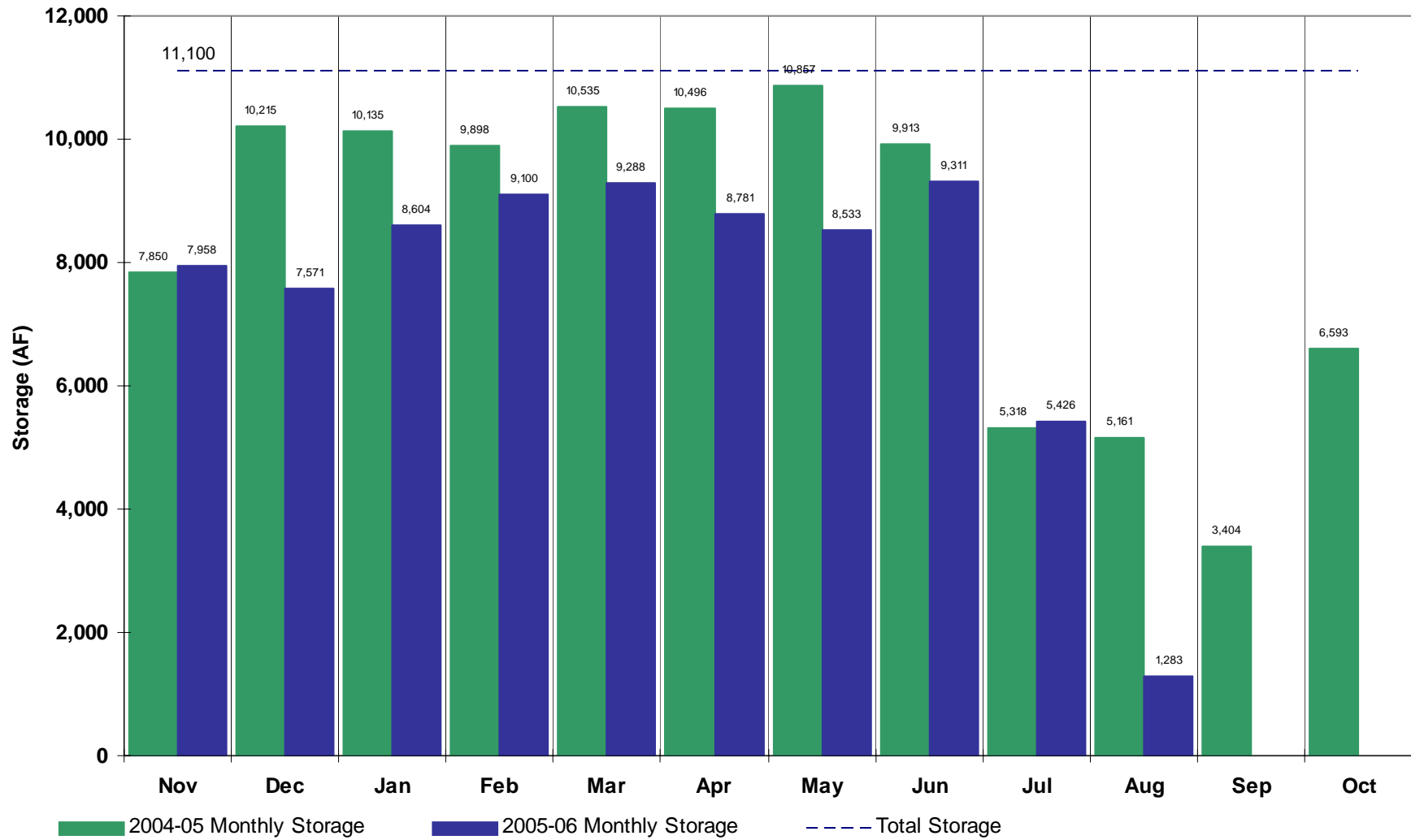


Cobb Lake

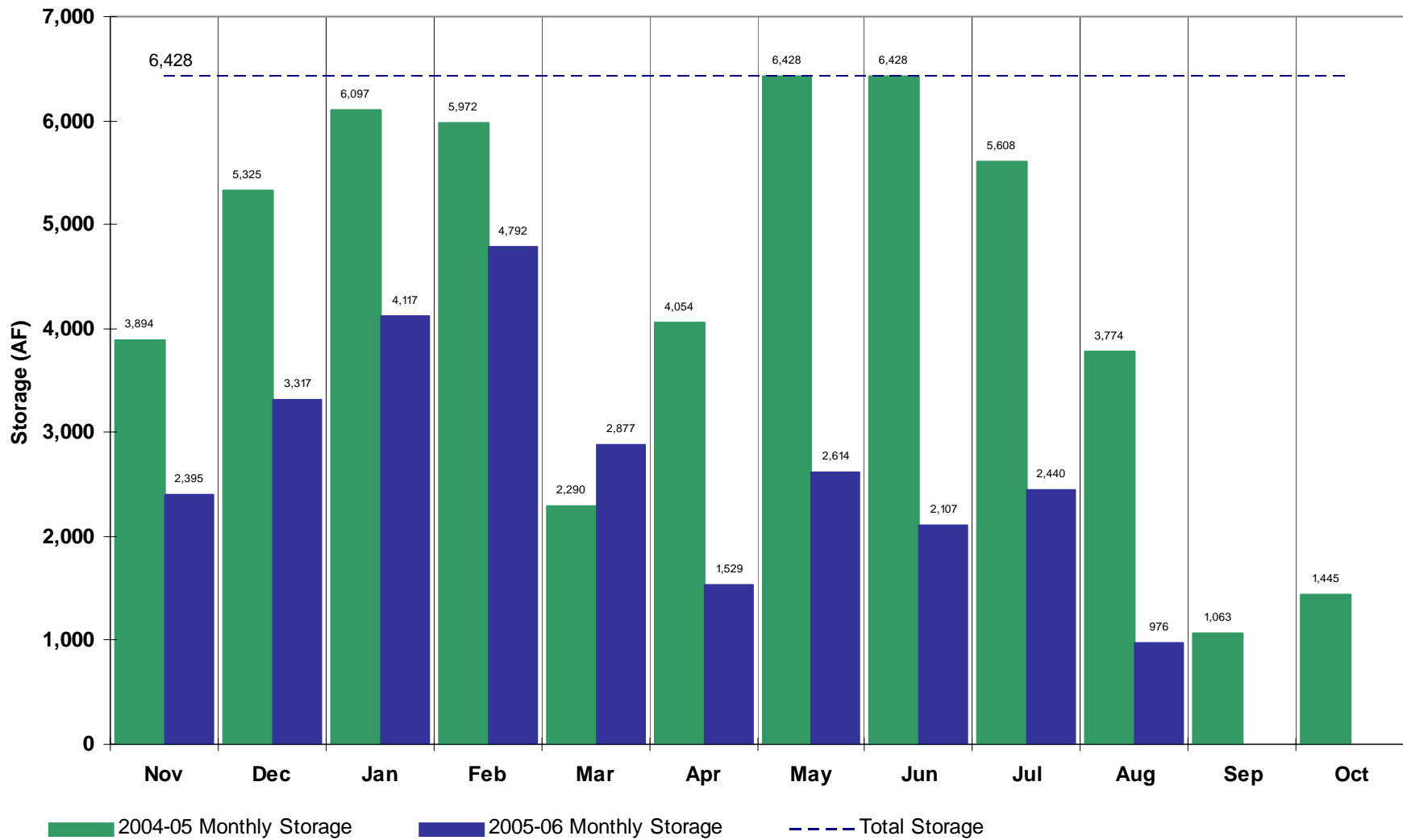
(Agricultural)



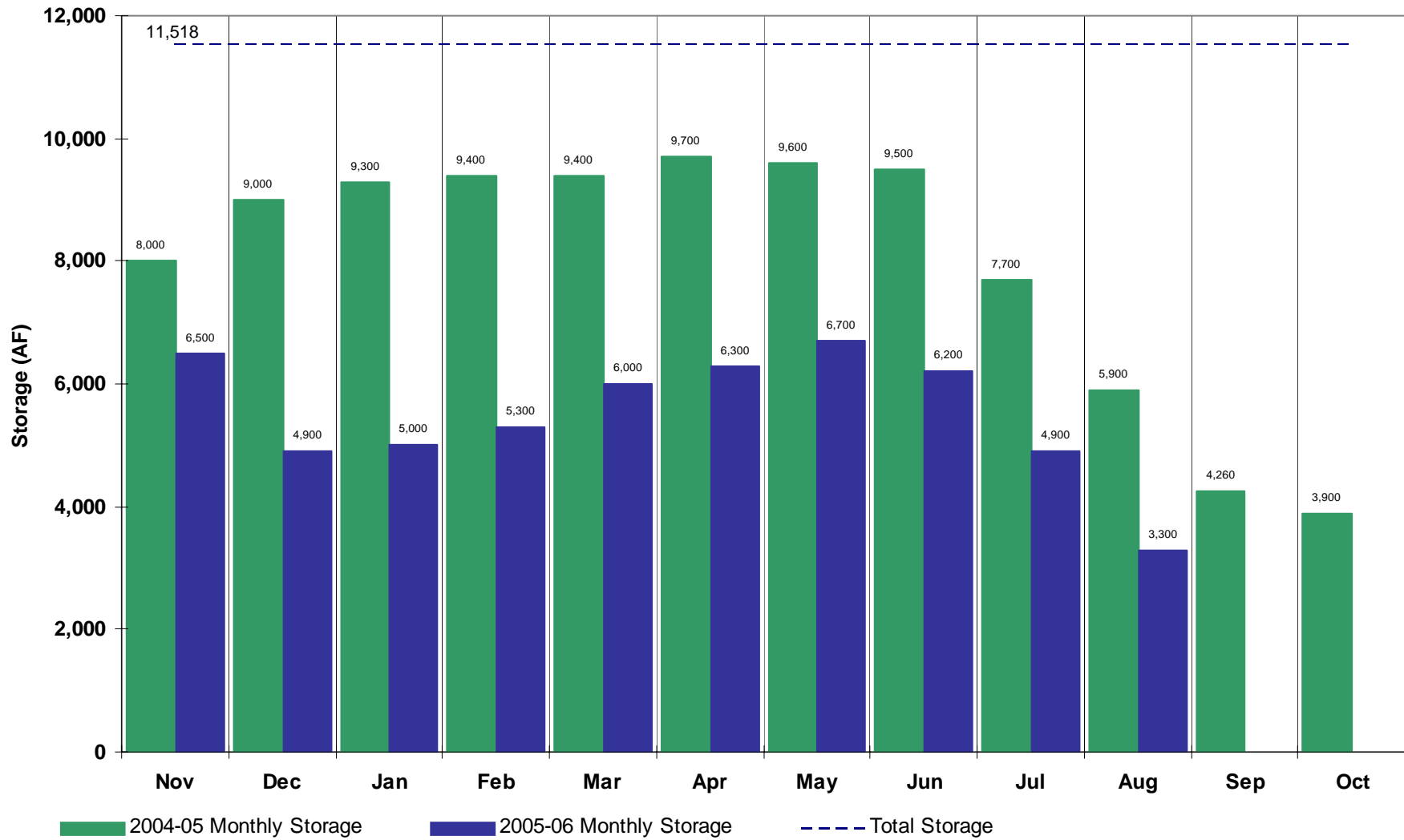
Fossil Creek Reservoir (Agricultural)



Halligan Reservoir (Agricultural)

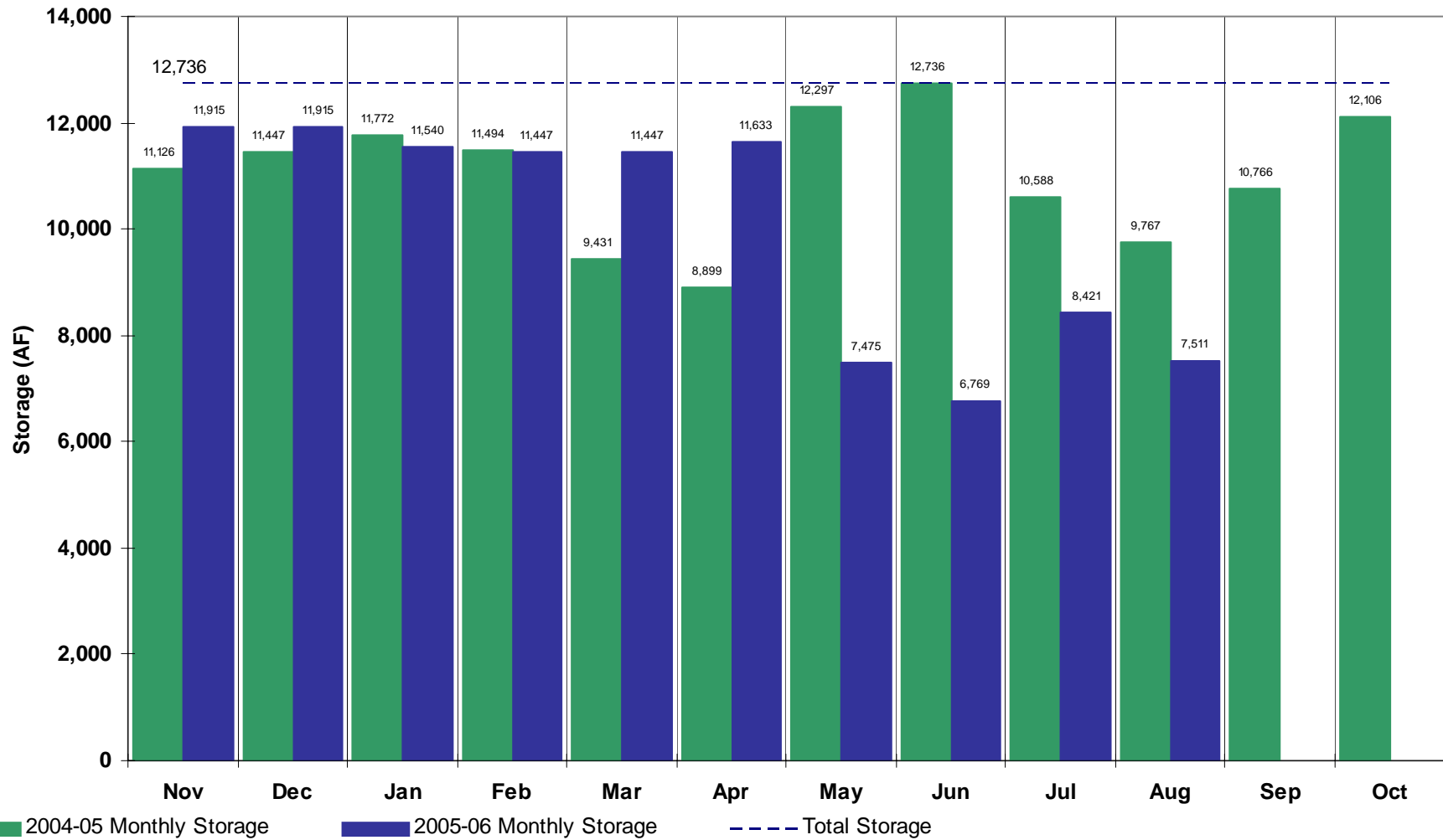


Marshall Lake (Agricultural)



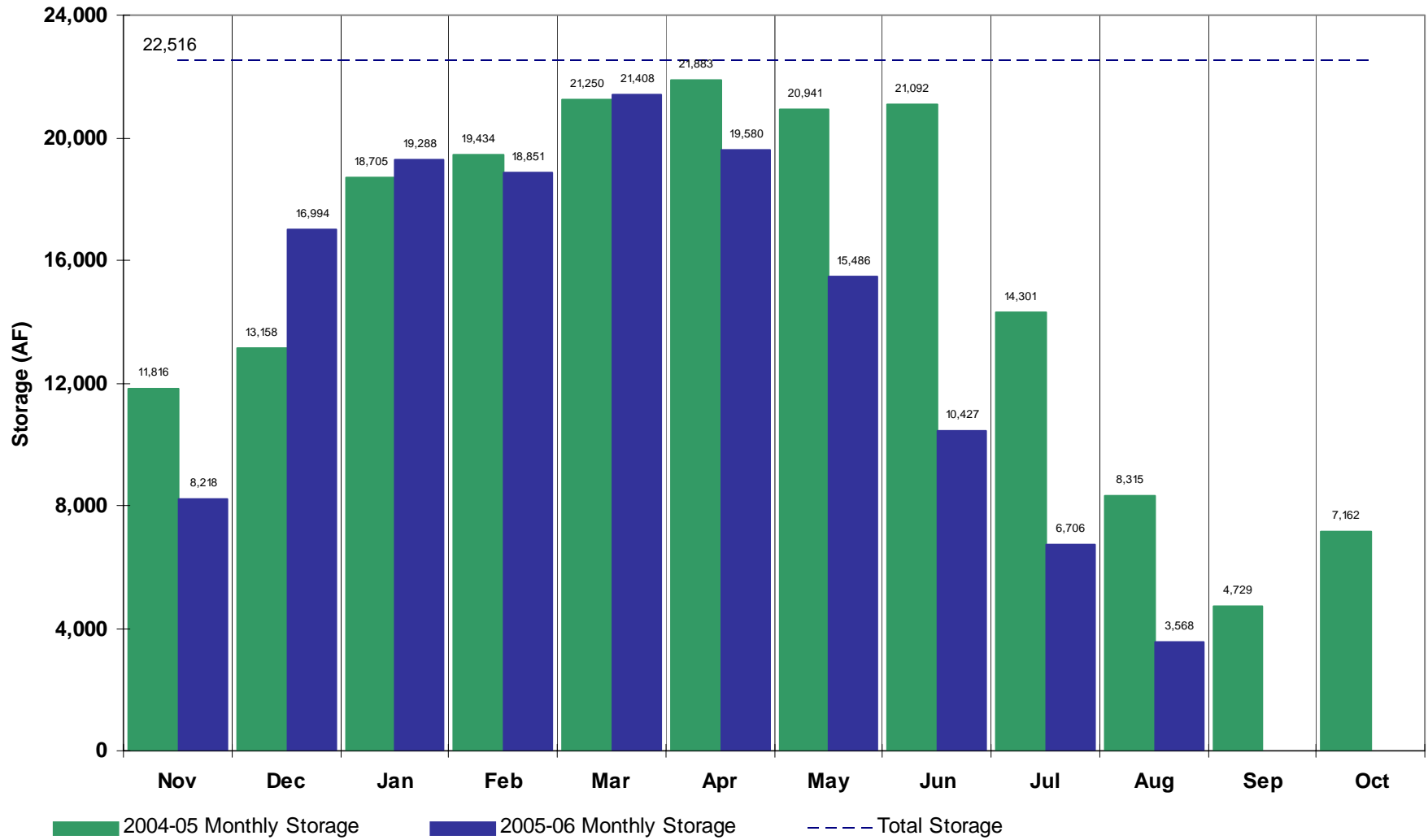
Loveland Greeley Reservoir

(Agricultural)

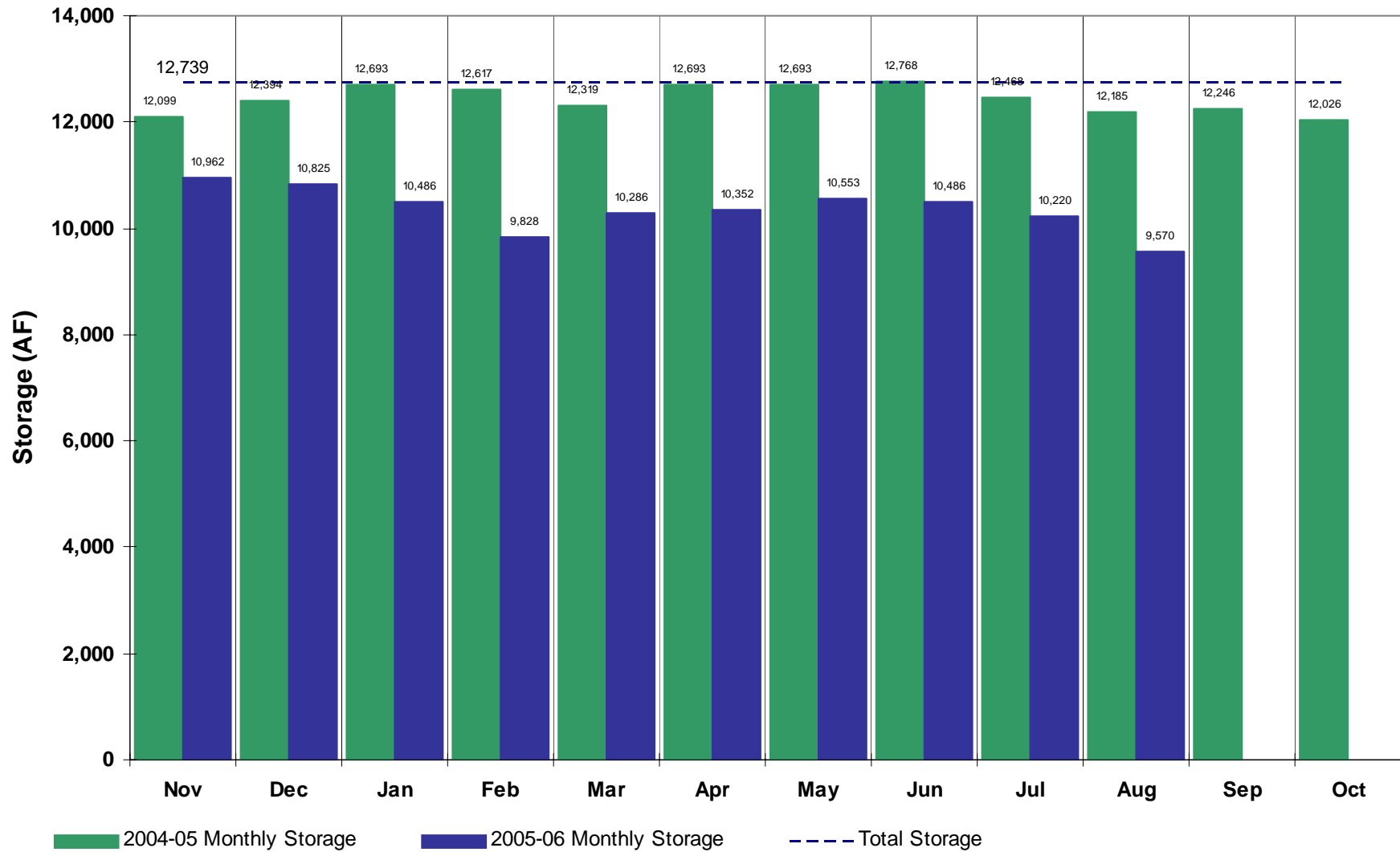


Milton Reservoir

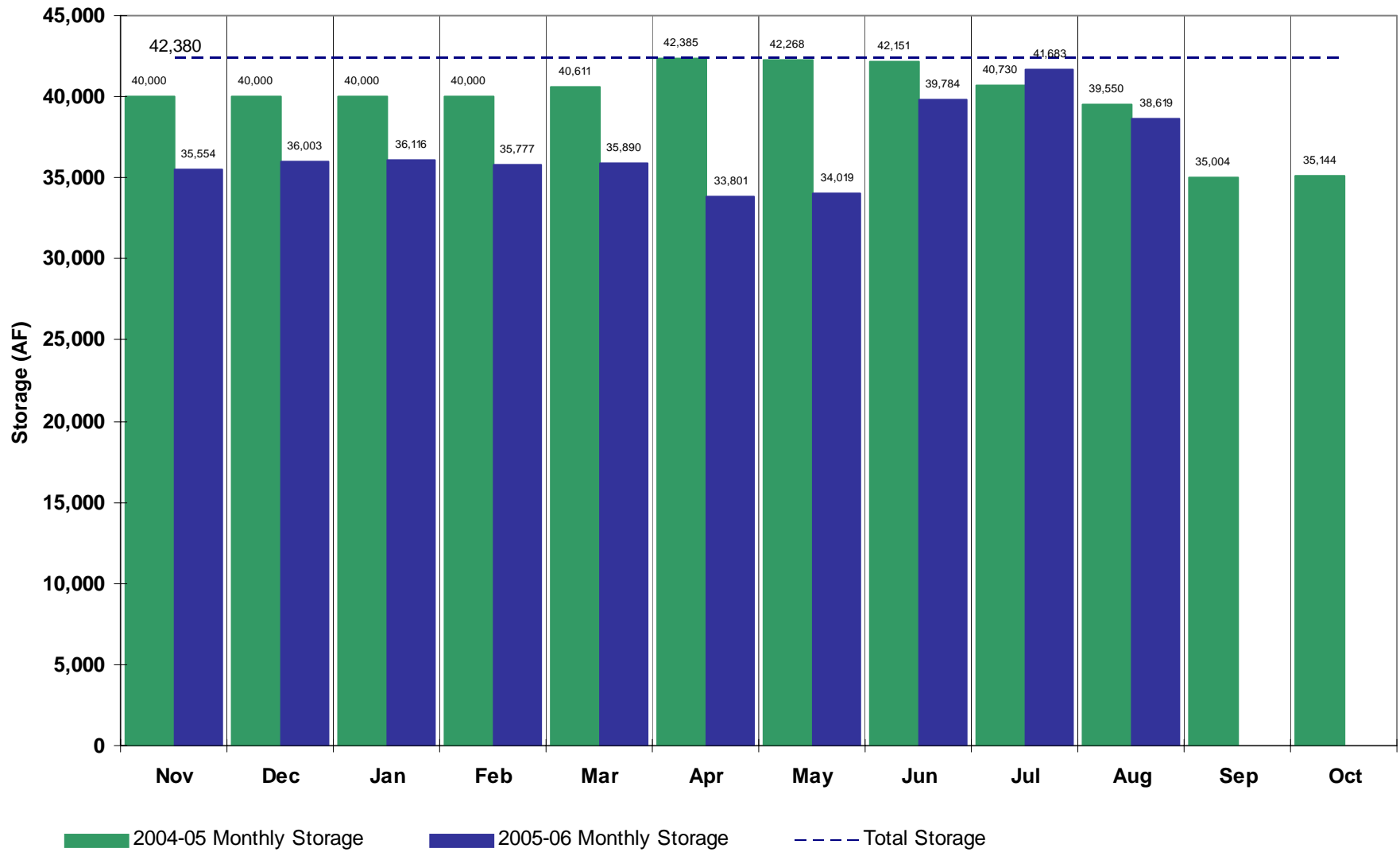
(Agricultural)



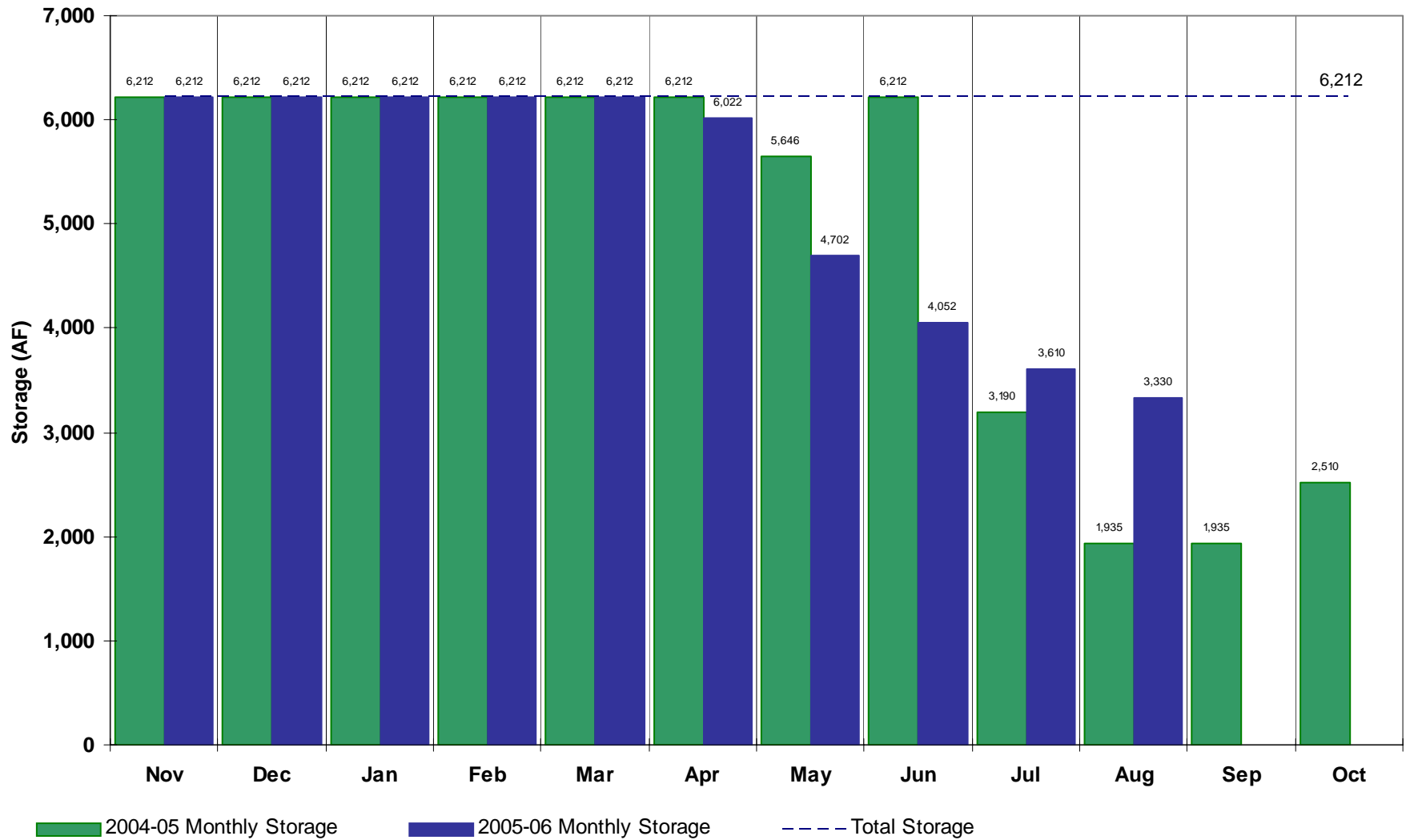
Union Reservoir (Agricultural)



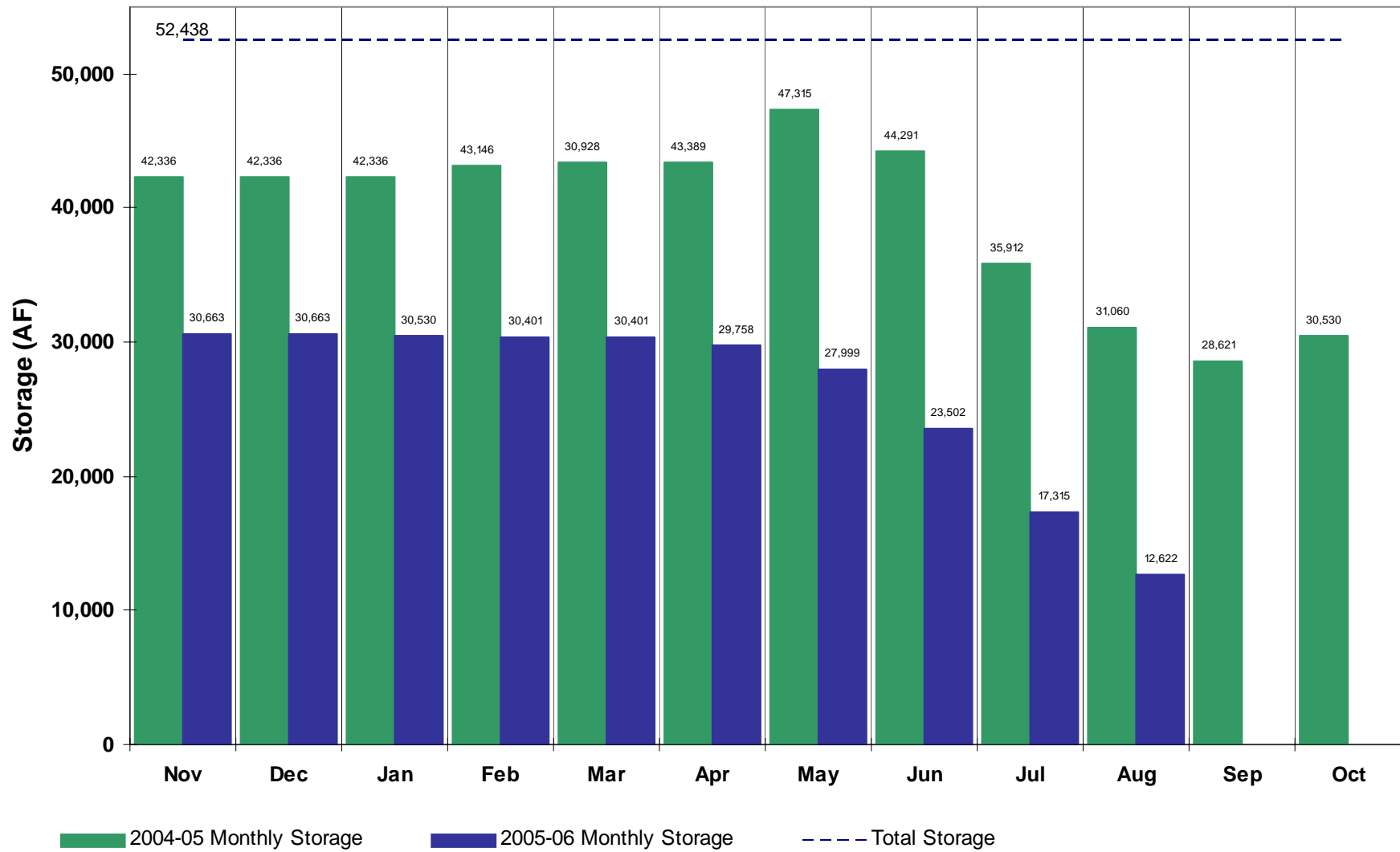
Standley Lake (Agricultural)



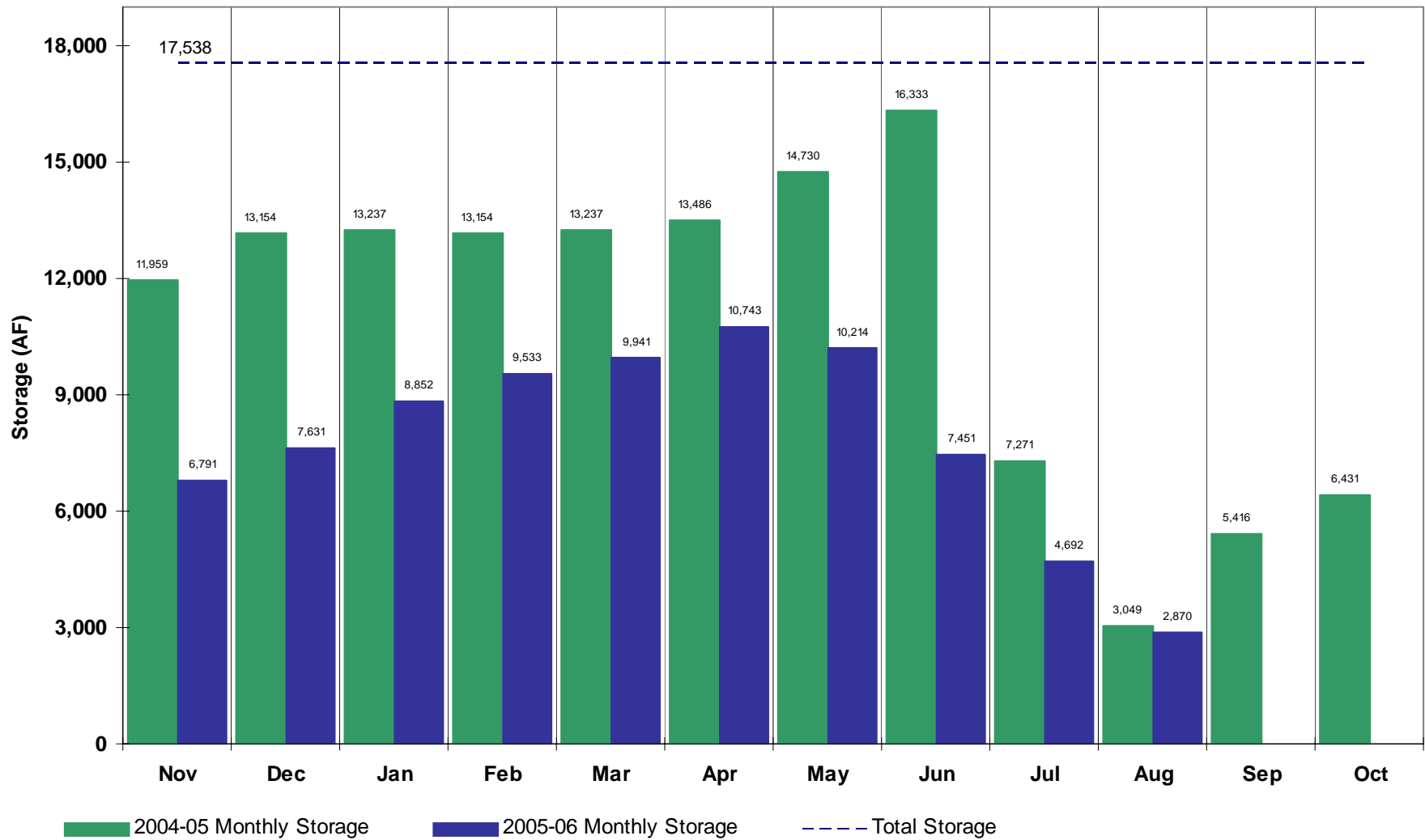
Lower Latham Reservoir (Agricultural)



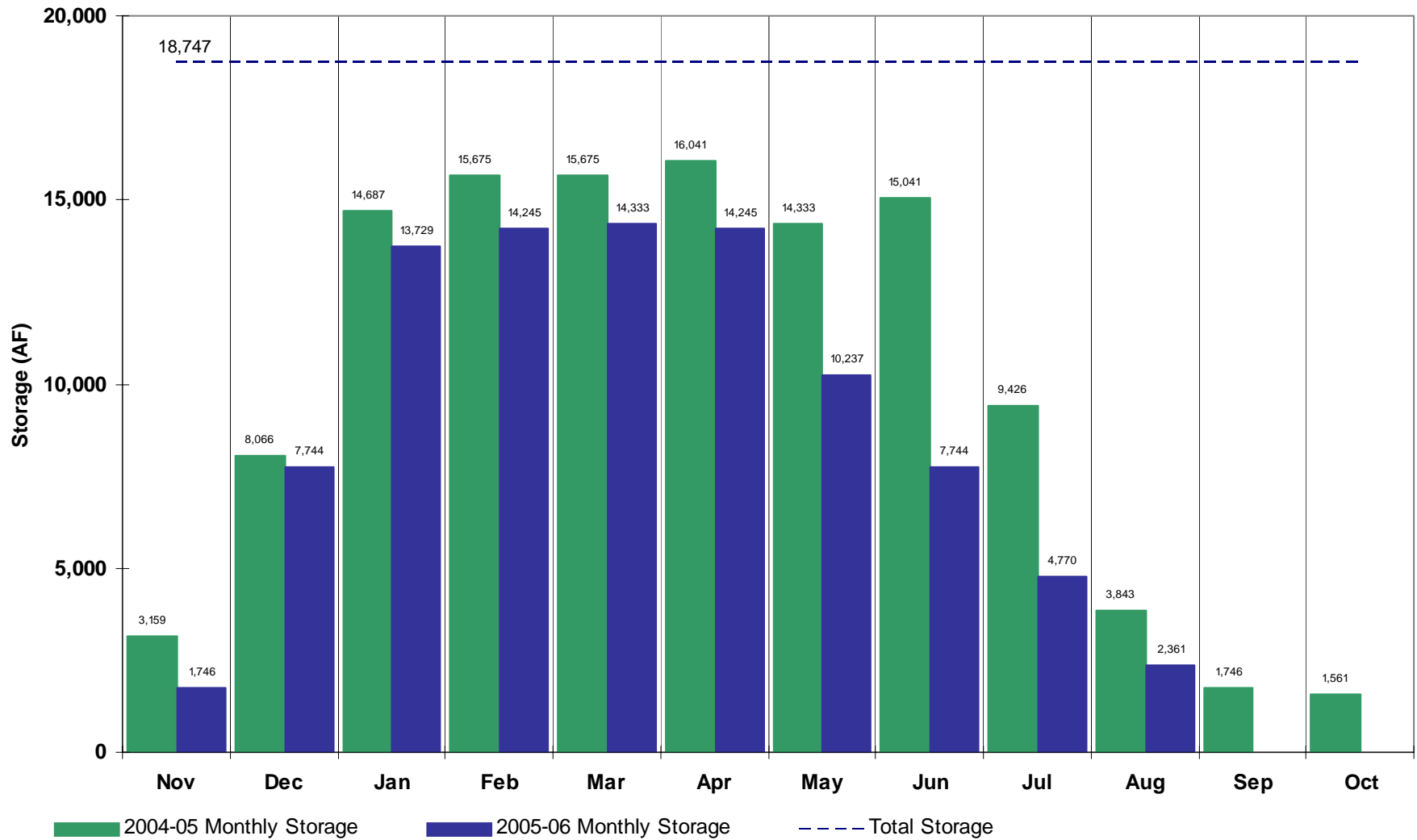
Boyd Lake (Agricultural)



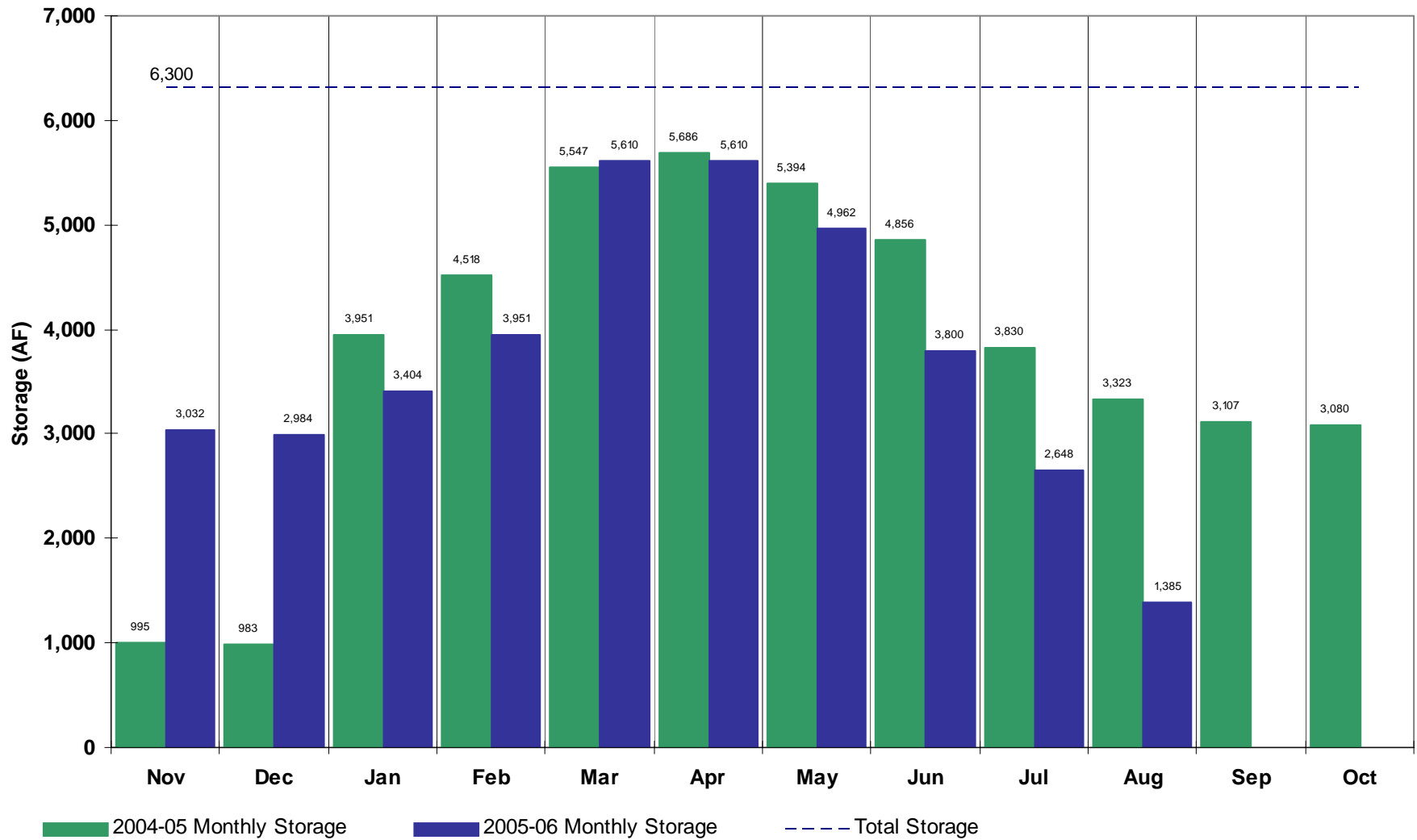
Windsor Reservoir (Agricultural)



Horse Creek Reservoir (Agricultural)

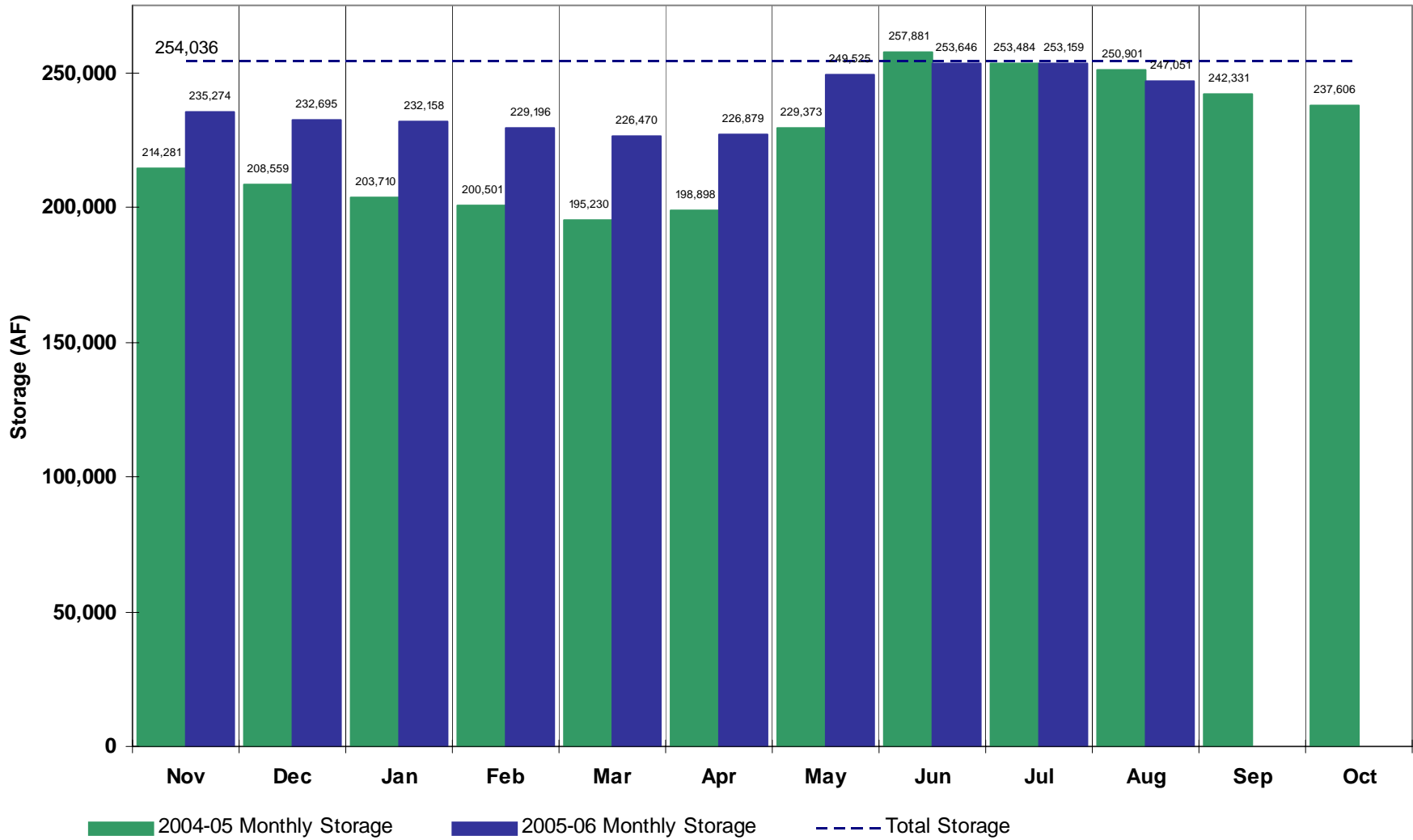


Prospect Reservoir (Agricultural)



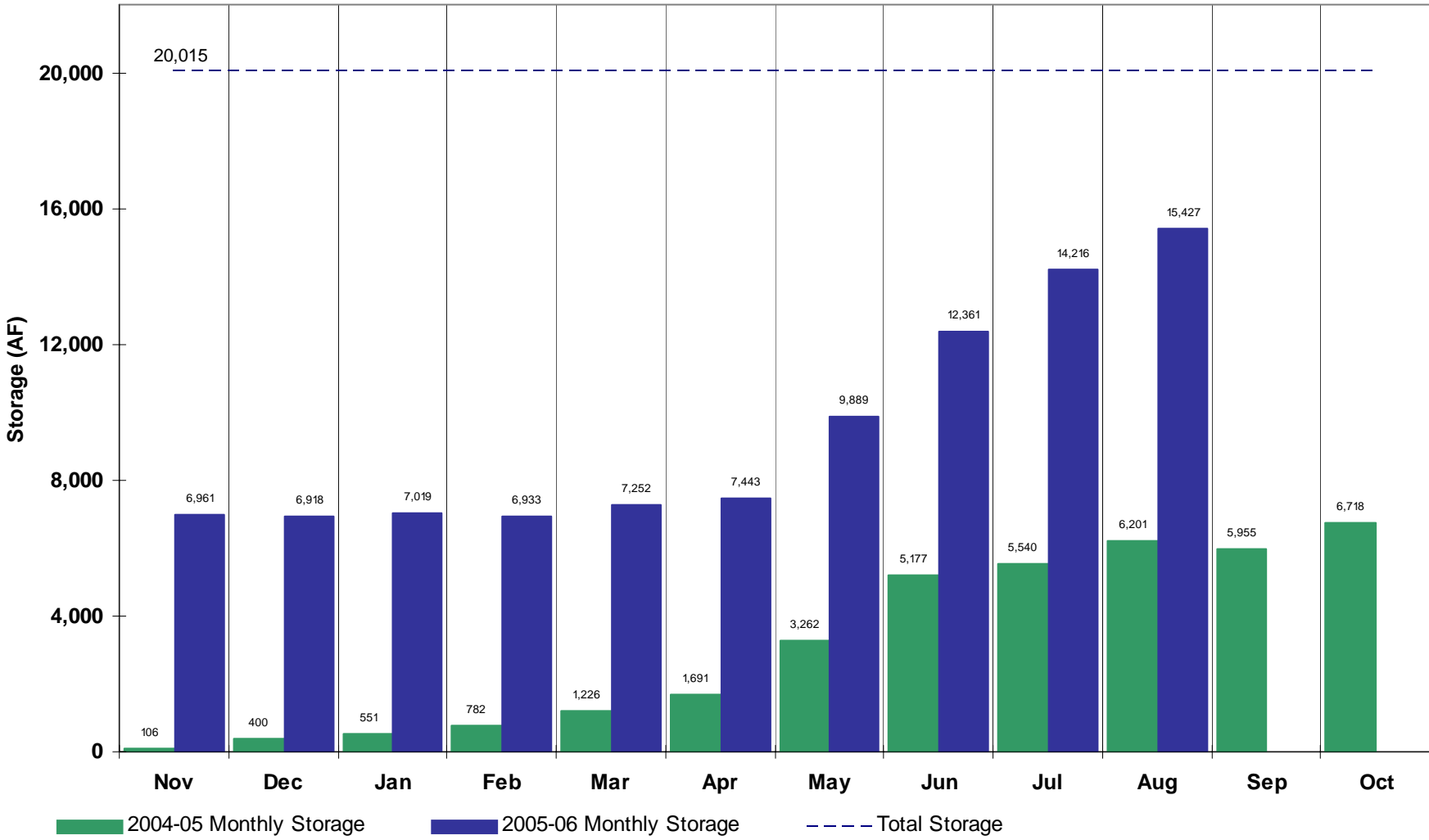
Dillon Reservoir

(Municipal)



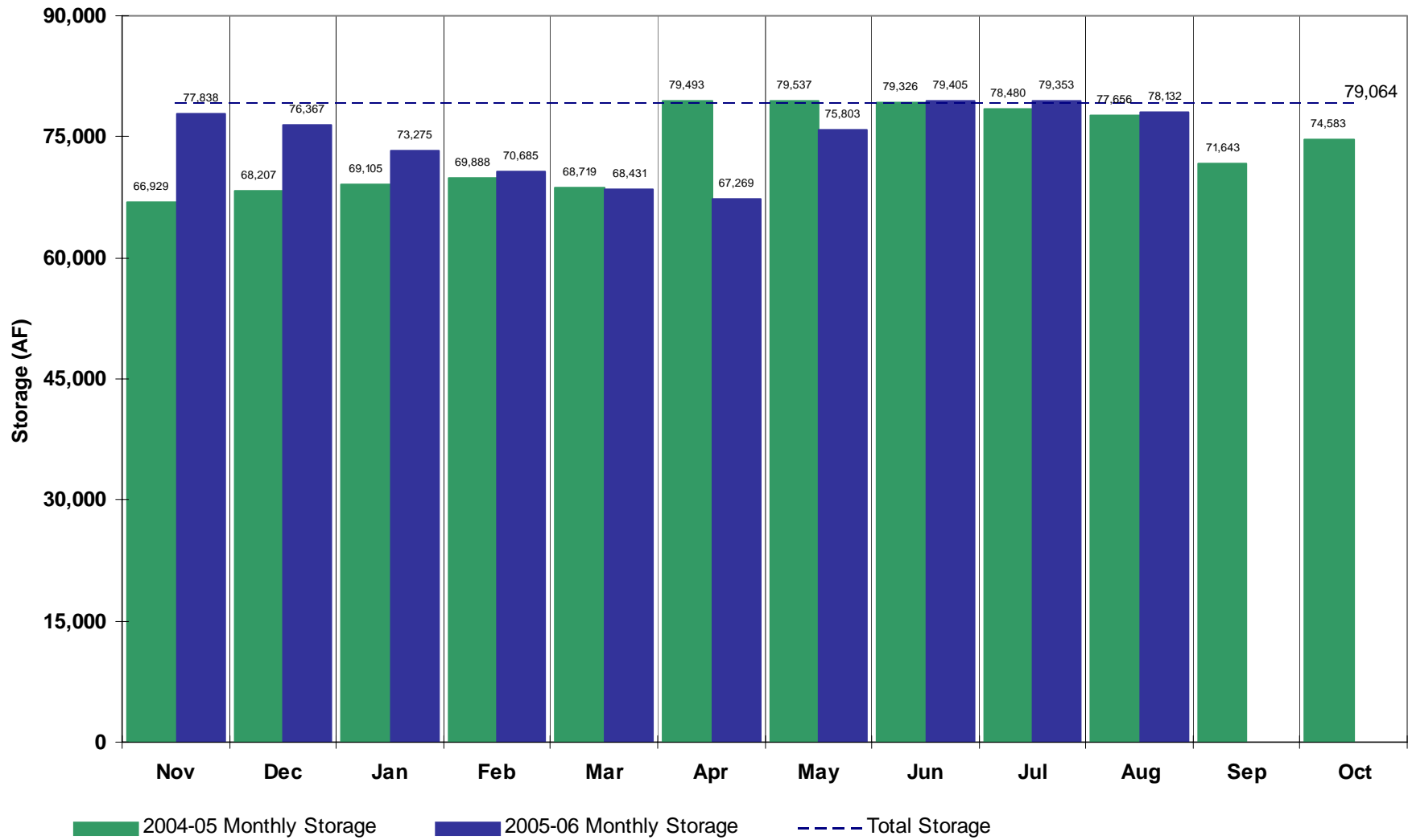
Antero Reservoir

(Municipal)

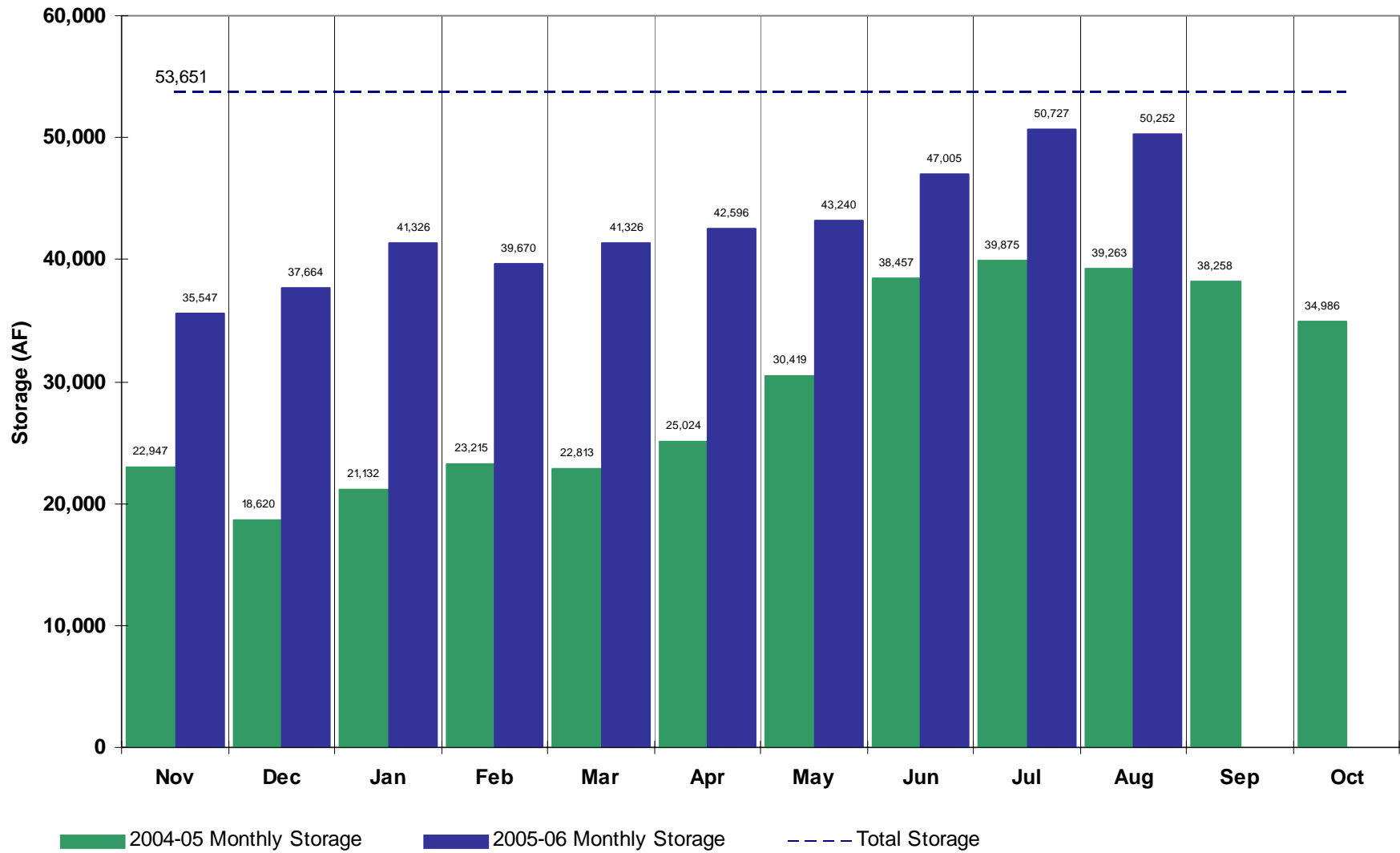


Cheesman Reservoir

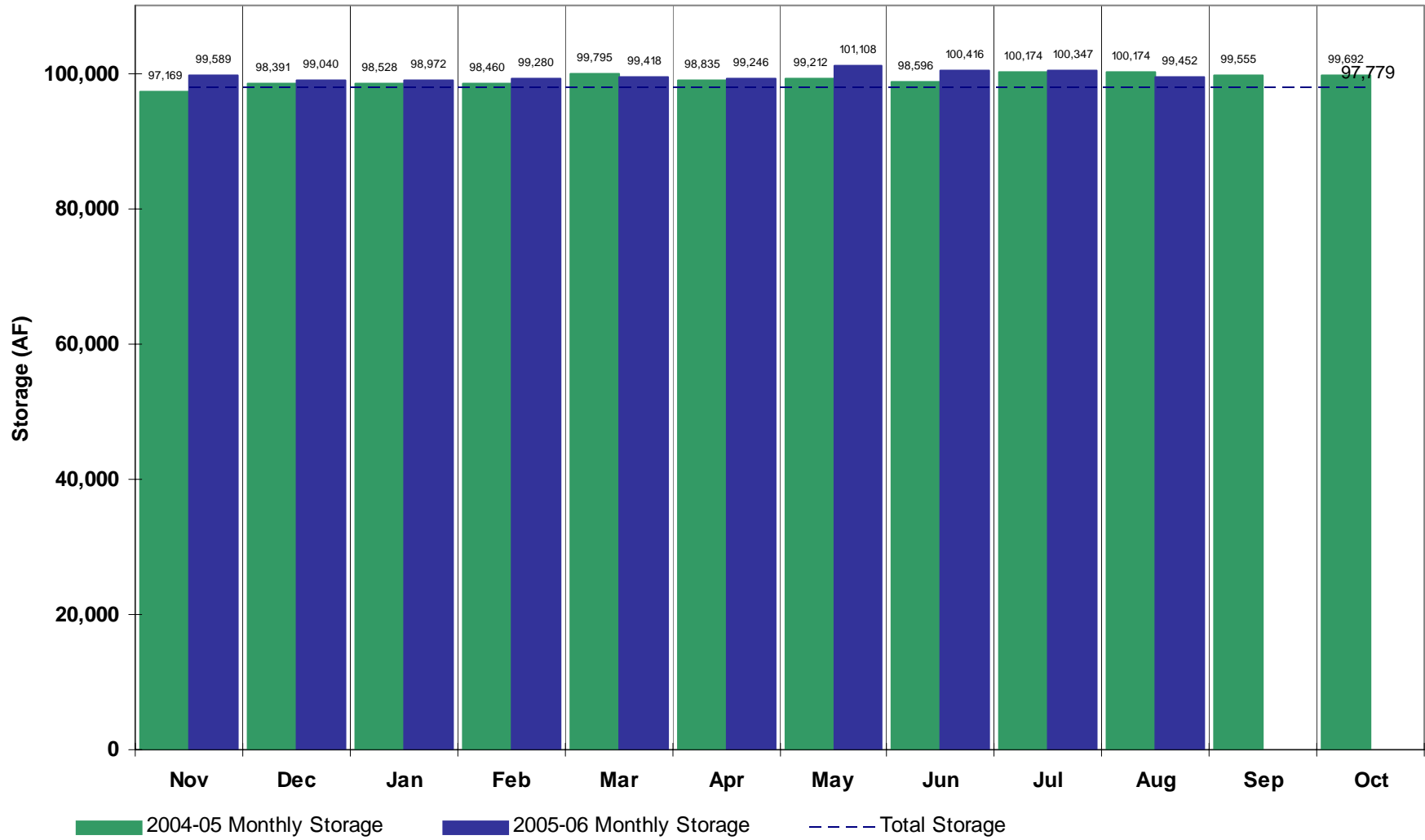
(Municipal)



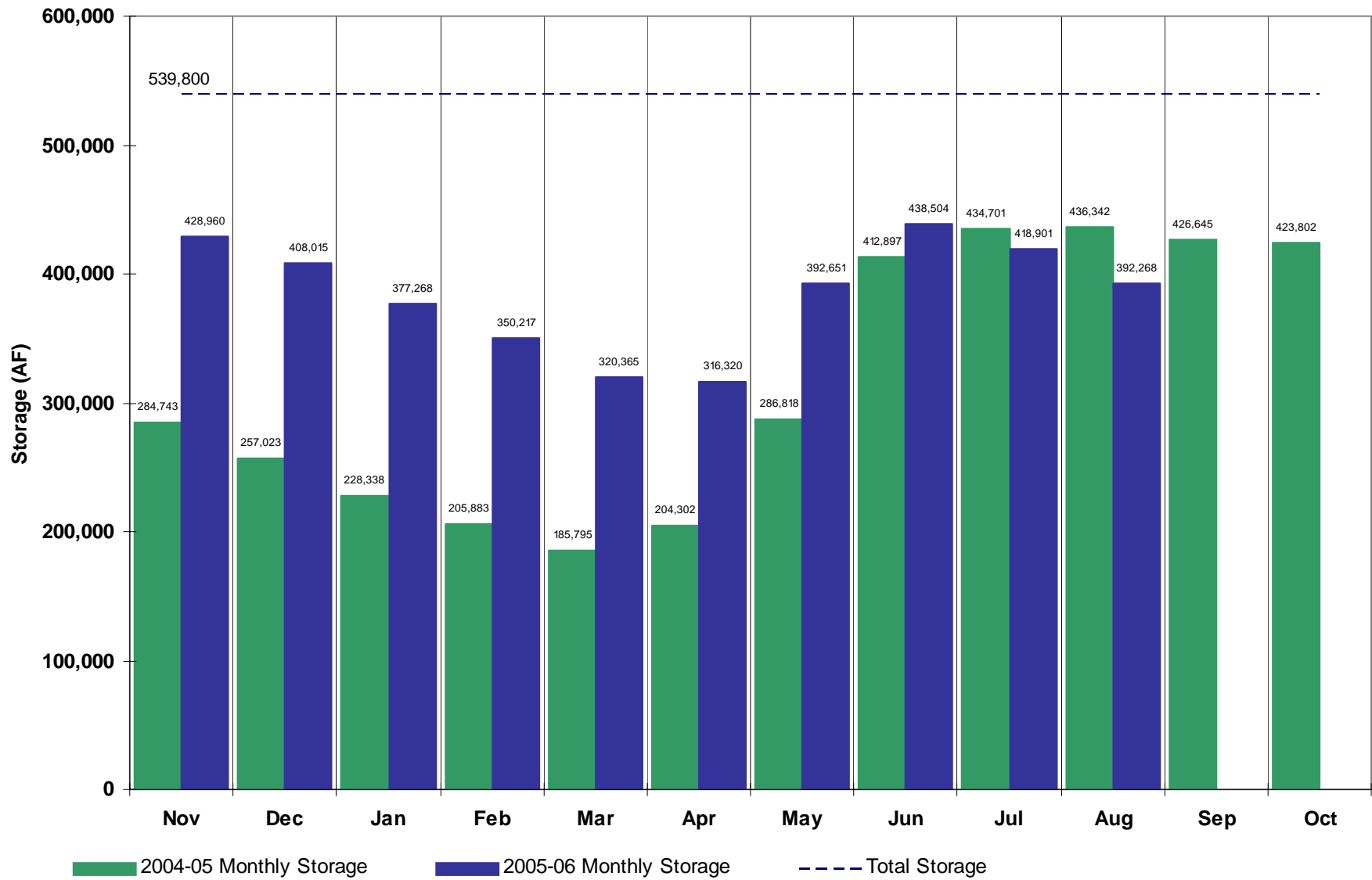
Spinney Mountain Reservoir (Municipal)



Eleven Mile Reservoir (Municipal)



Lake Granby



All data is collected by the personnel
of Division 1 and is subject to revision.



Margaret Spurgeon Reservoir Dam
(Photo by John Batka)