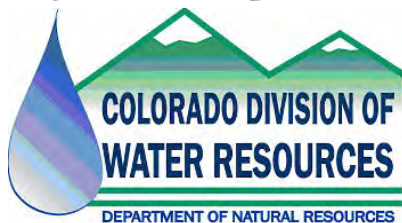


# South Platte Summary

July 2006

By David Ellington



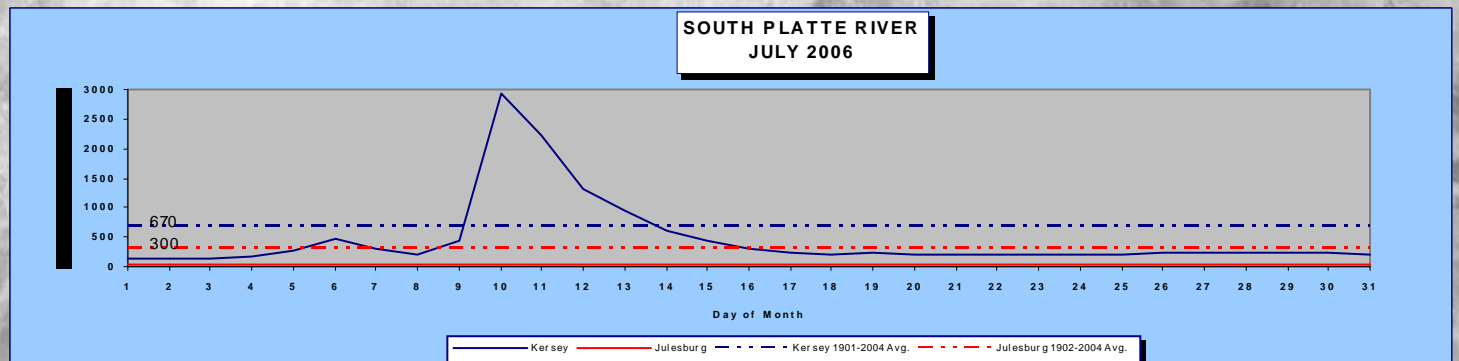
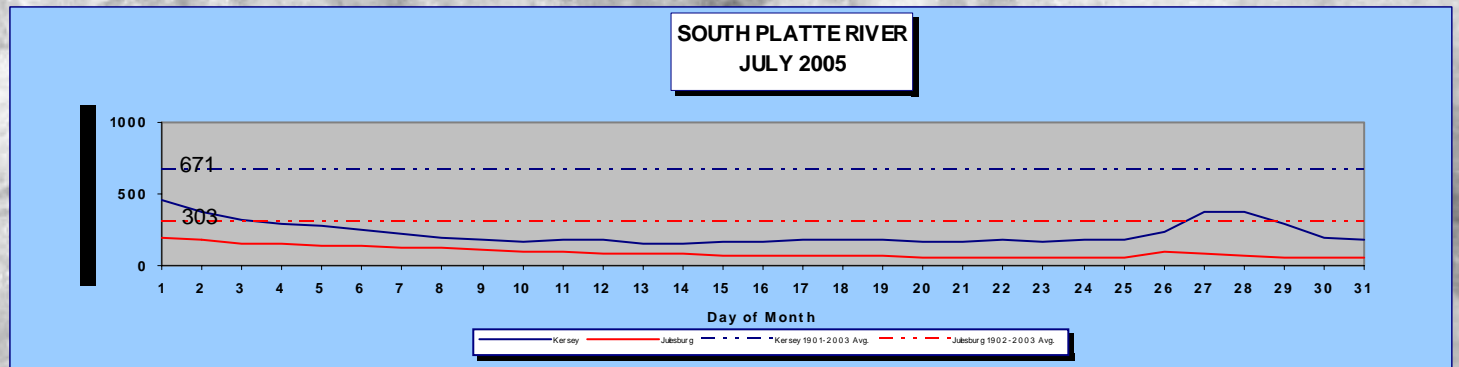
South Platte River near Sterling  
(photo by Claudia Engelmann)

# COLORADO DIVISION OF WATER RESOURCES, DIVISION 1

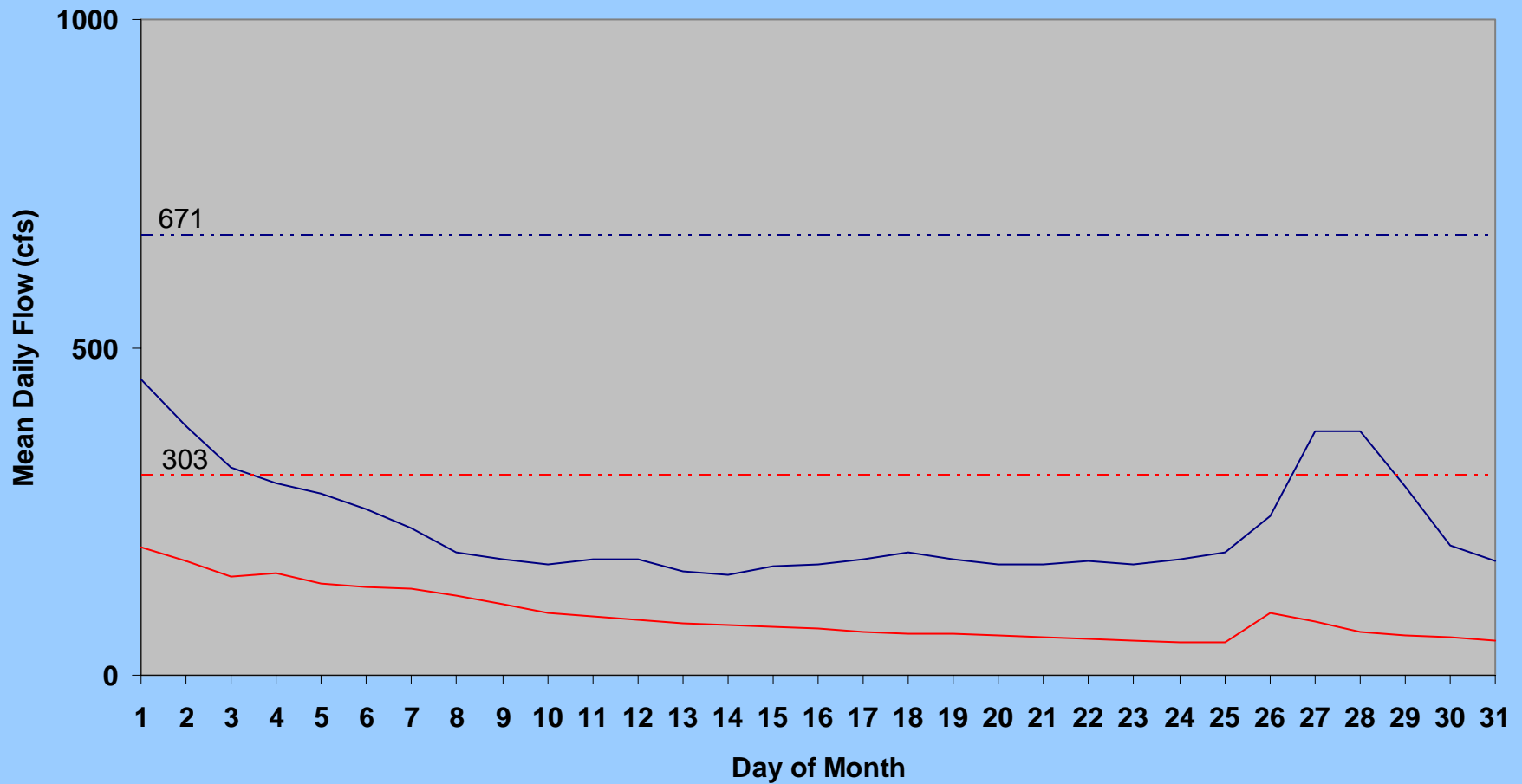
## MONTH OF JULY 2006

RESERVOIR	FULL ALLOWABLE CAPACITY (ACRE FEET)	FIRST OF MONTH (ACRE FEET)	END OF MONTH (ACRE FEET)	DISTRICT	CHANGE IN STORAGE (ACRE FEET)	% CHANGE IN STORAGE BASED ON FIRST OF MONTH STORAGE	% OF CURRENT FULL ALLOWABLE CAPACITY	% OF CURRENT FULL ALLOWABLE CAPACITY THIS MONTH LAST YEAR	SURCHARGE (ACRE FEET)
JULESBURG	22,666	14,276	5,894	64	-8,382	-59%	26%	74%	0
N STERLING	73,730	37,510	20,160	64	-17,350	-46%	27%	64%	0
PREWITT	28,500	14,680	9,240	64	-5,440	-37%	32%	71%	0
JACKSON	27,257	15,129	10,870	1	-4,259	-28%	40%	65%	0
EMPIRE	37,700	10,166	0	1	-10,166	-100%	0%	40%	0
RIVERSIDE	63,113	29,945	18,028	1	-11,917	-40%	29%	69%	0
BARR LAKE	31,652	13,659	7,079	2	-6,580	-48%	22%	60%	0
CHEESMAN	79,064	79,405	79,353	80	-52	0%	100%	99%	289
ELEVEN MILE	97,779	100,416	100,347	23	-69	0%	100%	100%	2,568
SPINNEY	53,651	47,005	50,727	23	3,722	8%	95%	74%	0
ANTERO	20,015	12,361	14,216	23	1,855	15%	71%	28%	0

RIVER GAGES	MEAN DAILY FLOW (CFS)
<b>KERSEY</b>	<b>462</b>
<b>JULESBURG</b>	<b>31</b>
<b>THIS MONTH LAST YEAR</b>	
<b>KERSEY</b>	<b>225</b>
<b>JULESBURG</b>	<b>91</b>
<b>MEAN FOR PERIOD OF RECORD*</b>	
<b>KERSEY</b>	<b>670</b>
<b>JULESBURG</b>	<b>300</b>
* 1901-2004	
1902-2004	

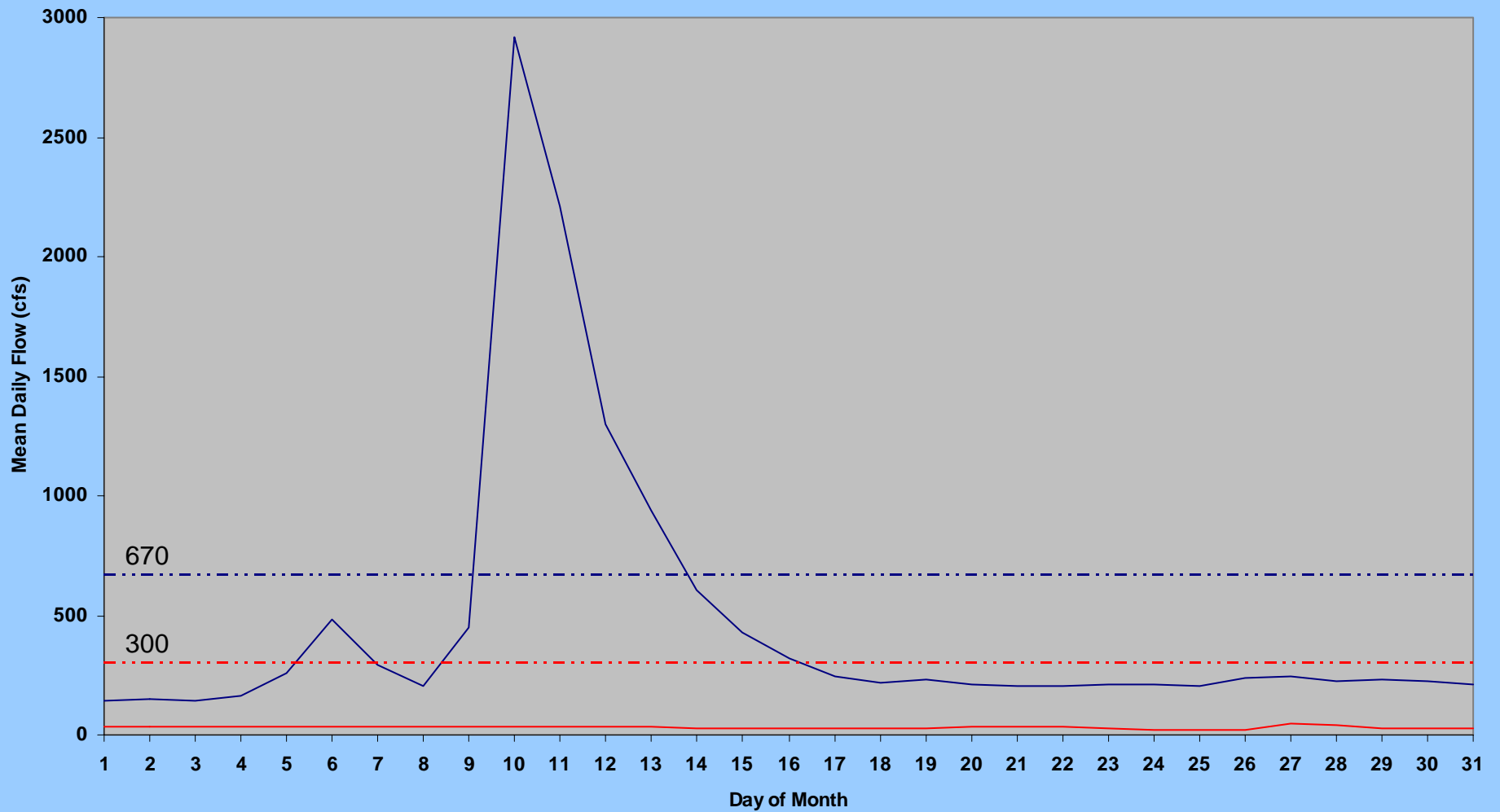


# SOUTH PLATTE RIVER JULY 2005



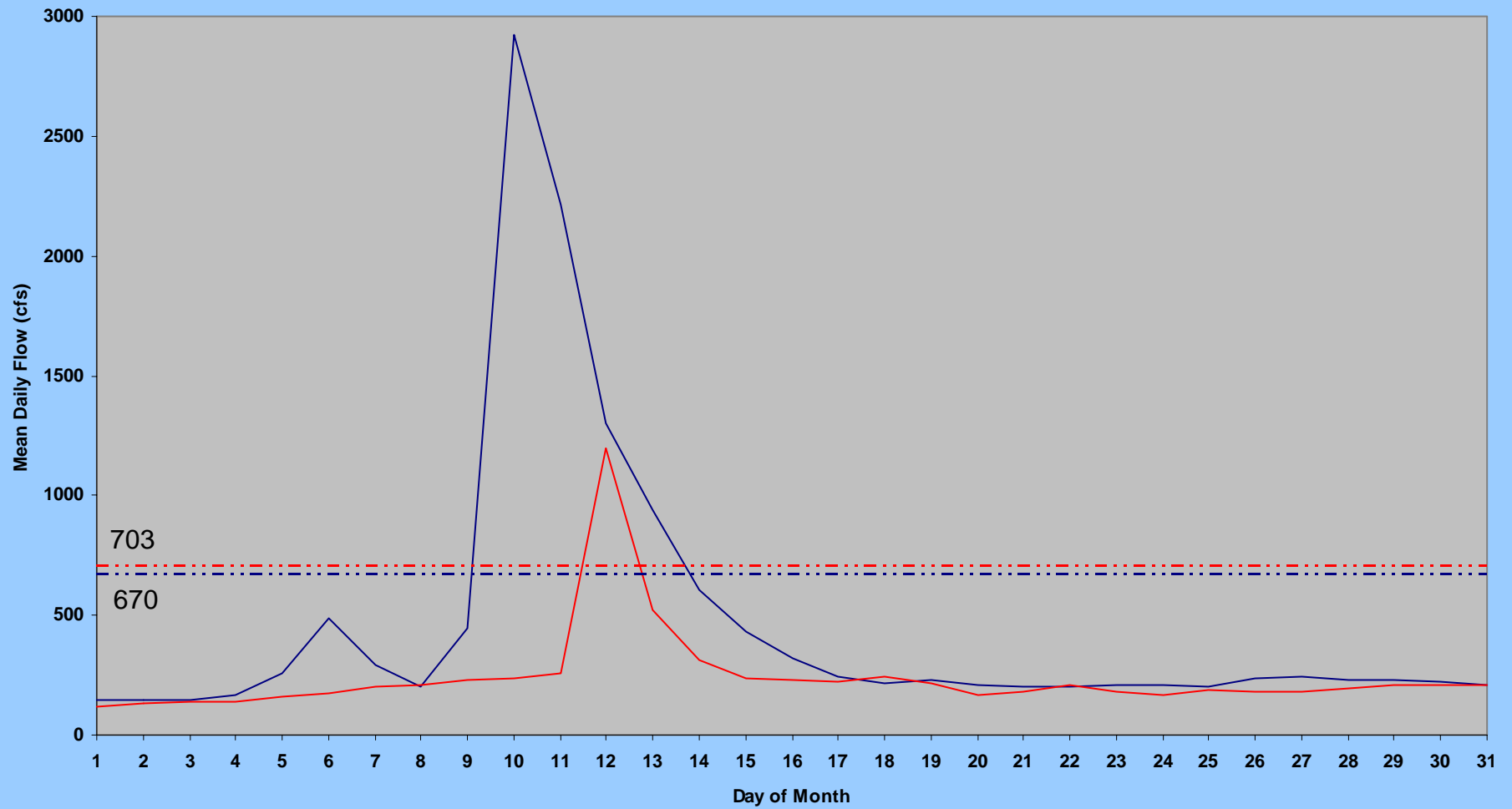
— Kersey — Julesburg - - - Kersey 1901-2003 Avg. - - - Julesburg 1902-2003 Avg.

# SOUTH PLATTE RIVER JULY 2006



— Kersey — Julesburg - - - Kersey 1901-2004 Avg. - - - Julesburg 1902-2004 Avg.

# KERSEY and BALZAC JULY 2006



— Kersey — Balzac - - - Kersey 1901-2004 Avg. - - - Balzac 1981-2004 Avg.

Strontia Release (photo by Jana Ash)



## South Platte River Monthly Stream Flow (cfs) Statistics

### South Platte River at Kersey

### South Platte River at Julesburg

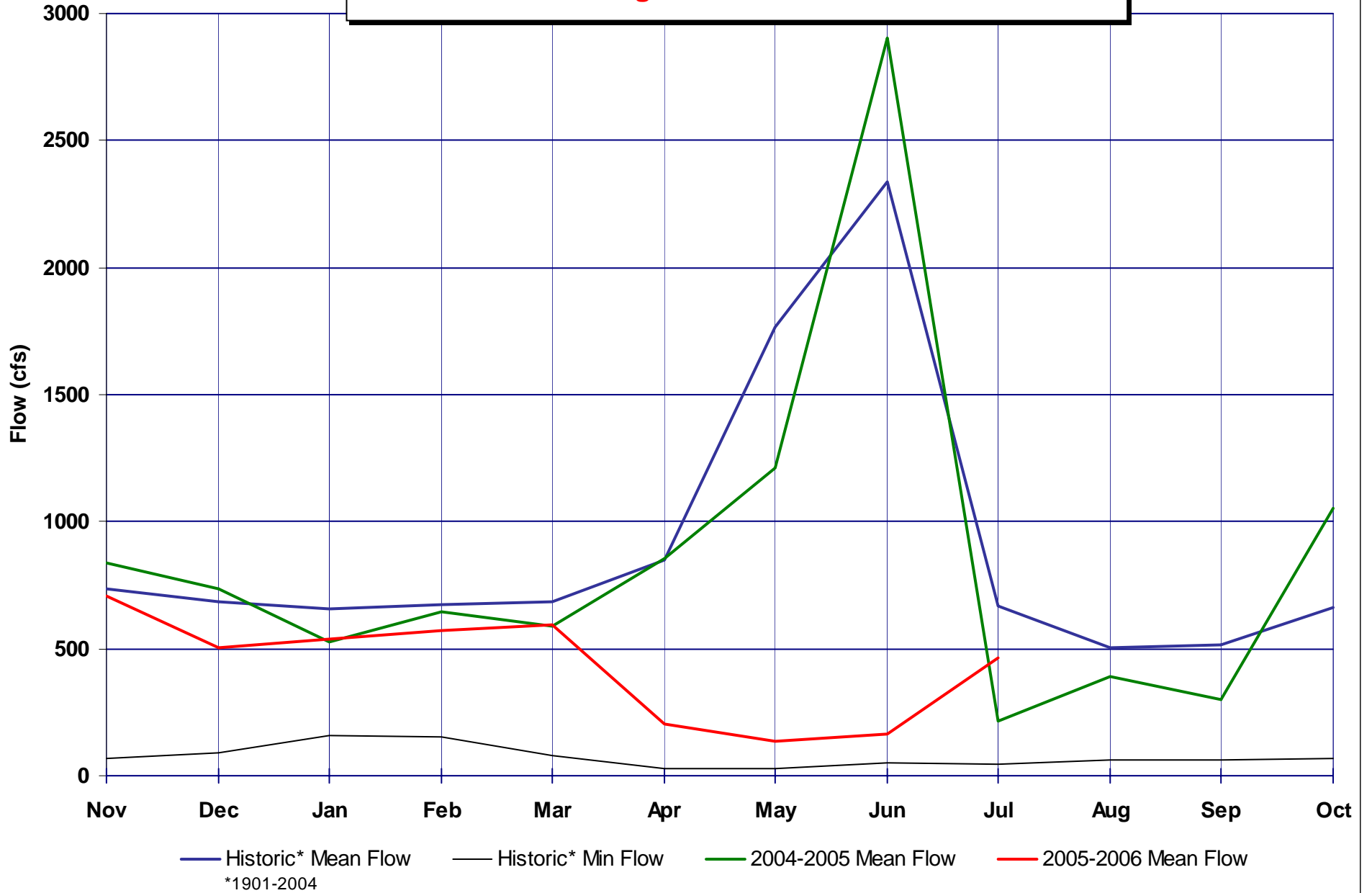
Month	Historic*	Historic*	Year	Historic*	Year	IY 2006 Mean Monthly Flow	Month	Historic*	Historic*	Year	Historic*	Year	IY 2006 Mean Monthly Flow
	Mean Flow	Max Flow		Min Flow				Mean Flow	Max Flow		Min Flow		
Nov	737	3650	1984	70	1934	709	Nov	346	2900	1984	4.2	1903	71
Dec	684	1890	1961	91	1934	502	Dec	408	1820	1984	13	2002	165
Jan	656	2160	1974	158	1935	537	Jan	526	2510	1970	21	2003	98
Feb	673	3060	1914	152	1935	569	Feb	604	3220	1930	22	2004	115
Mar	686	3470	1983	80	1935	592	Mar	545	12900	1910	15	1904	100
Apr	849	18100	1942	28	1955	204	Apr	540	14400	1942	4.0	1904	144
May	1766	26100	1973	29	1955	138	May	1043	18100	1973	12	1911	174
Jun	2336	31000	1921	52	1954	165	Jun	1459	30800	1921	2.0	1910	34
Jul	670	12600	1983	44	1955	462	Jul	300	12600	1983	0.0	1903	31
Aug	506	9690	1951	65	1934		Aug	184	8920	1968	0.0	1903	
Sep	517	14200	1938	62	1940		Sep	245	7130	1938	2.0	1902	
Oct	662	6180	1984	66	1954		Oct	308	3130	1984	4.2	1903	

\*Period of record 1901-2004

\*Period of record 1902-2004

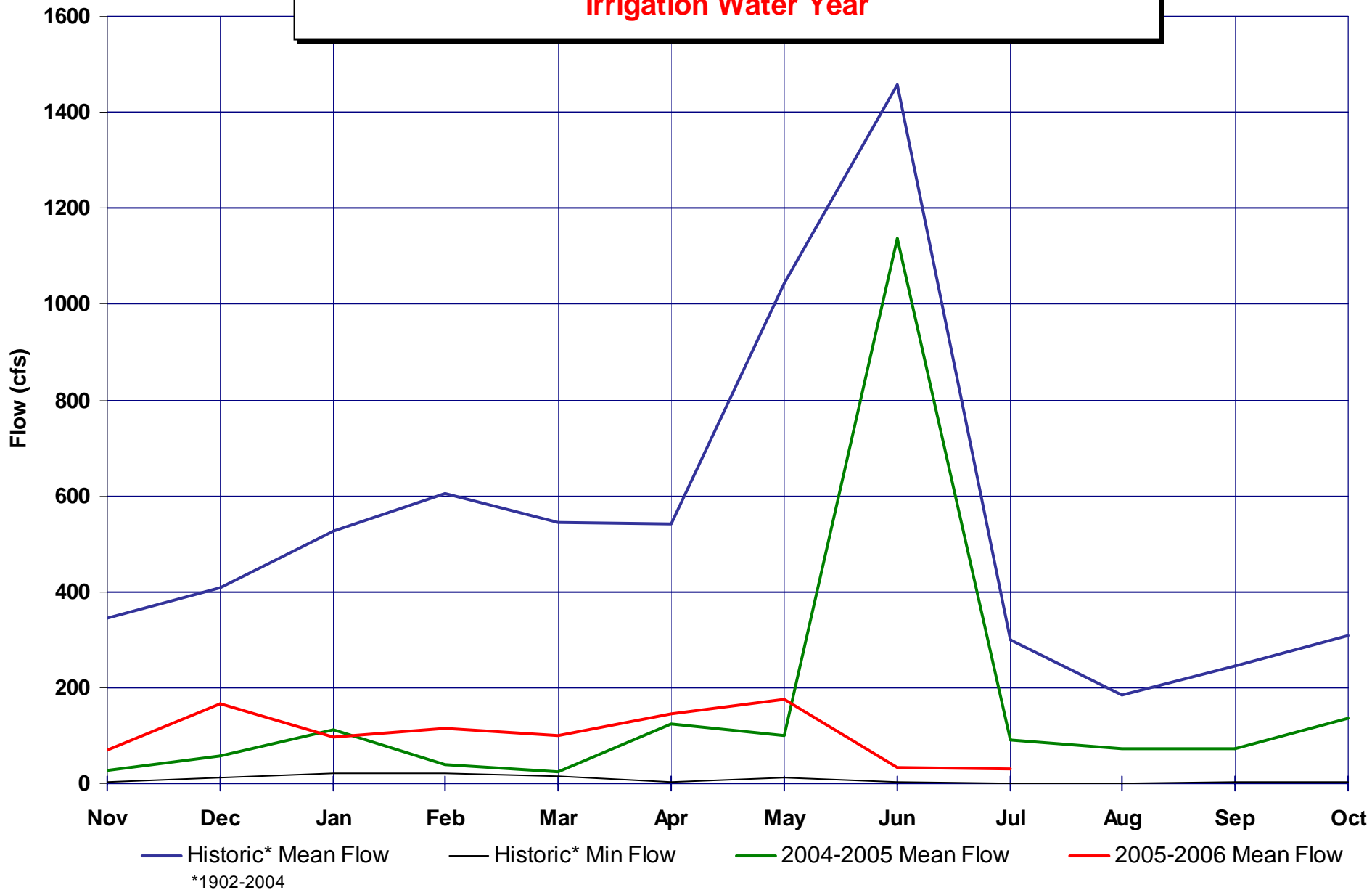
# South Platte River at Kersey

Irrigation Water Year



# South Platte River at Julesburg

Irrigation Water Year





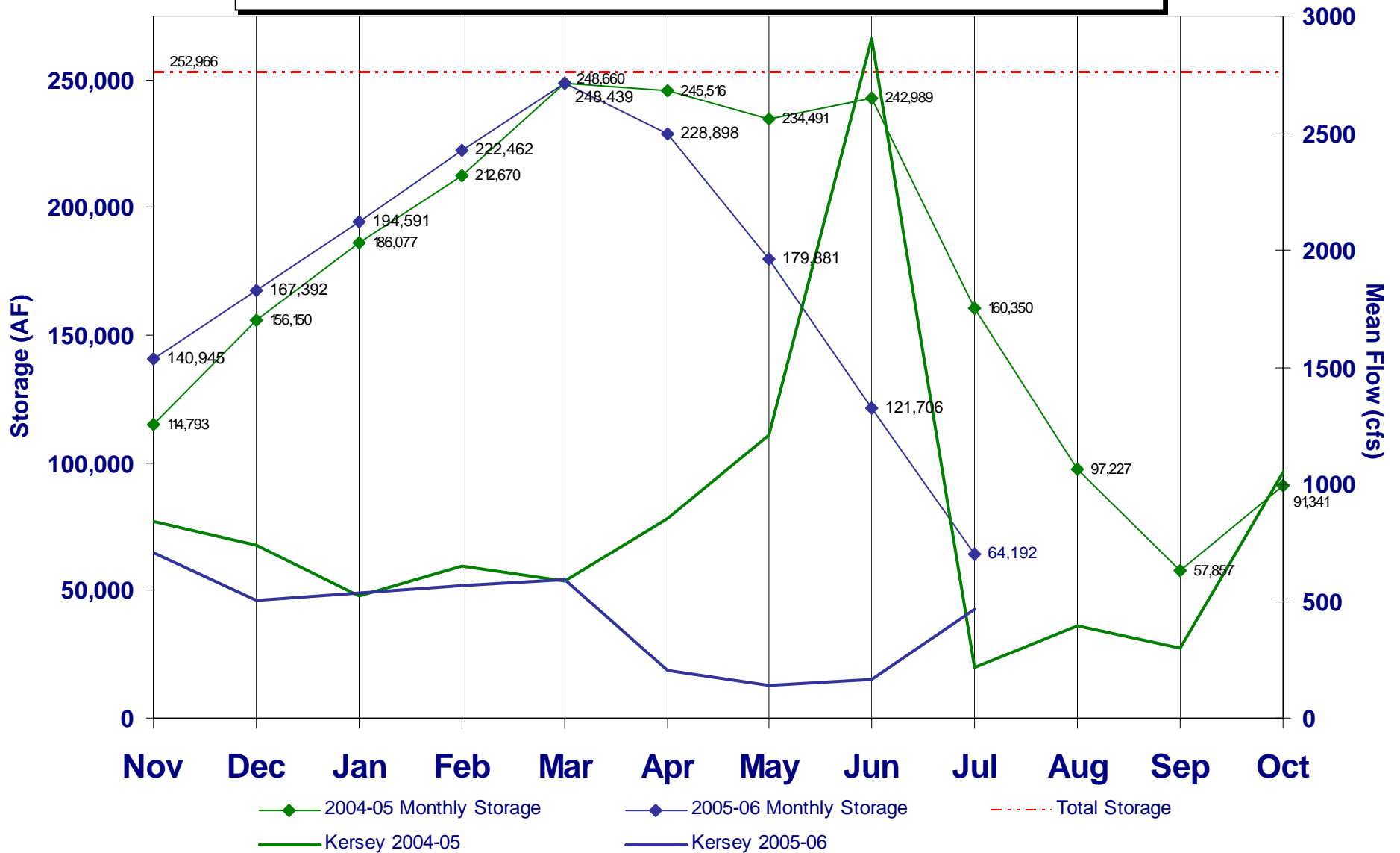
**Next four slides show Reservoir Storage  
below and above Kersey**



**Highline Release from Prewitt Reservoir  
(photo by Claudia Engelmann)**

# Reservoir Storage below Kersey

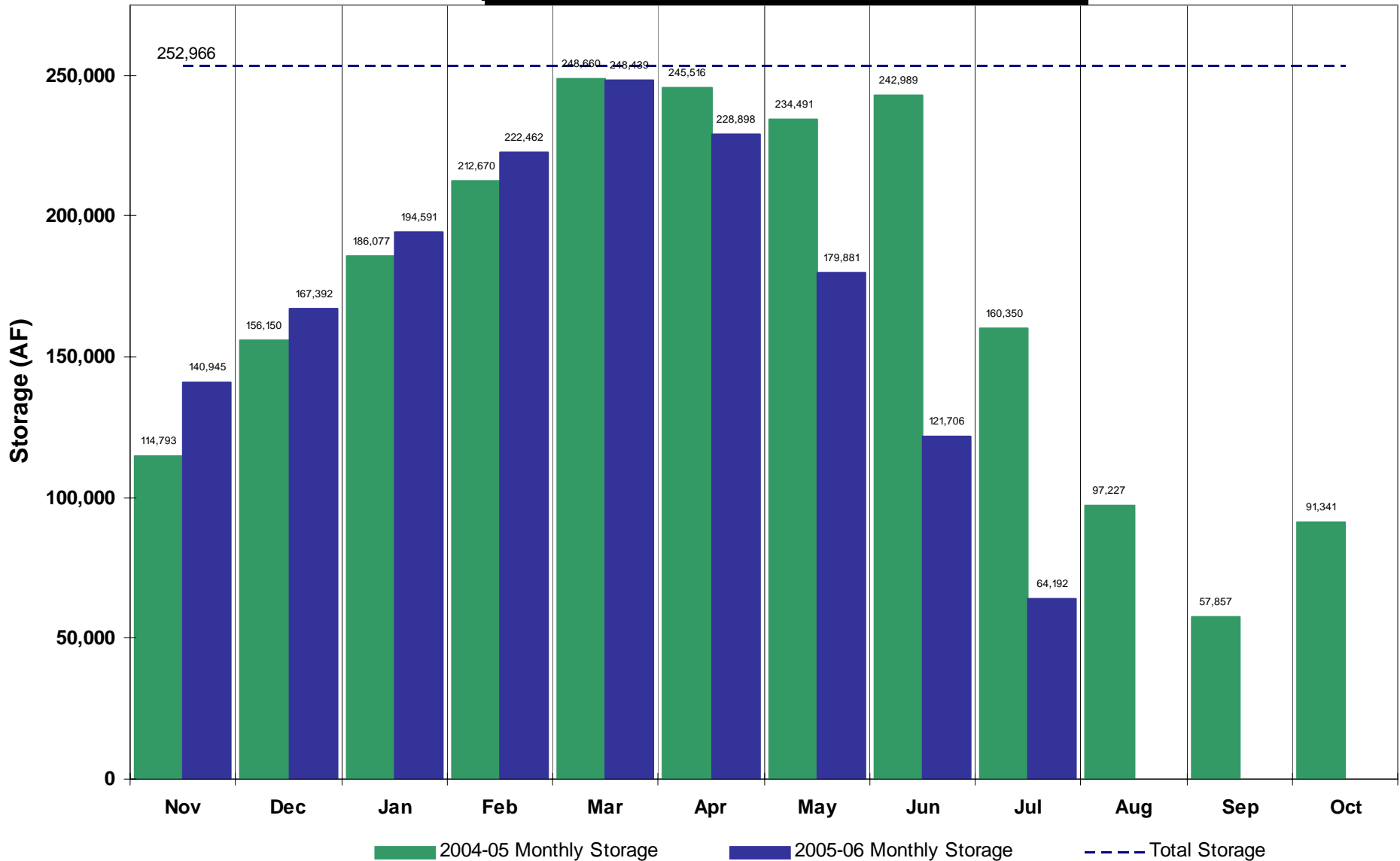
Selected Reservoirs\*



\*Empire, Riverside, Jackson, Prewitt, North Sterling, & Julesburg

# South Platte Reservoirs

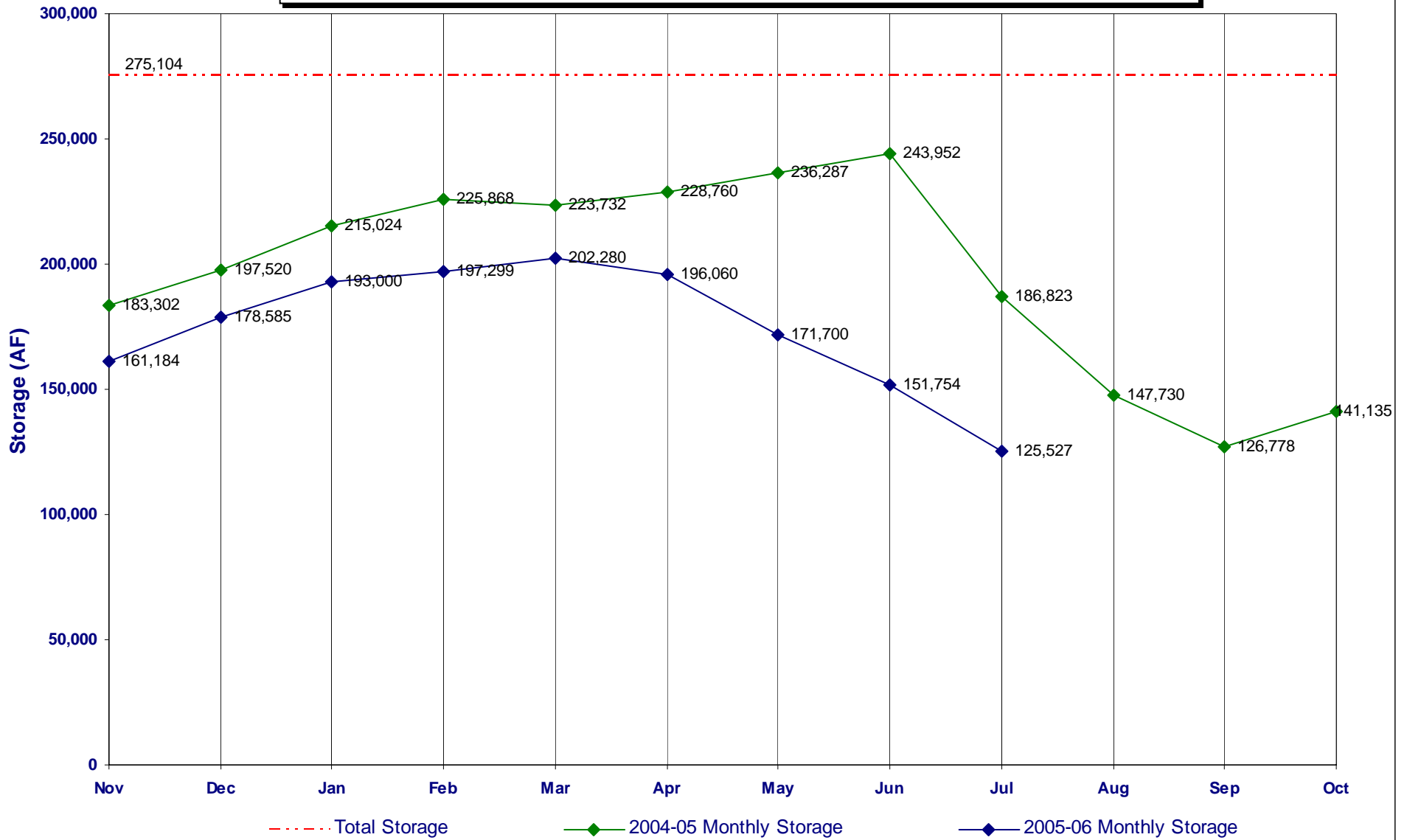
## Storage below Kersey\*



\*Empire, Riverside, Jackson, Prewitt, North Sterling, & Julesburg

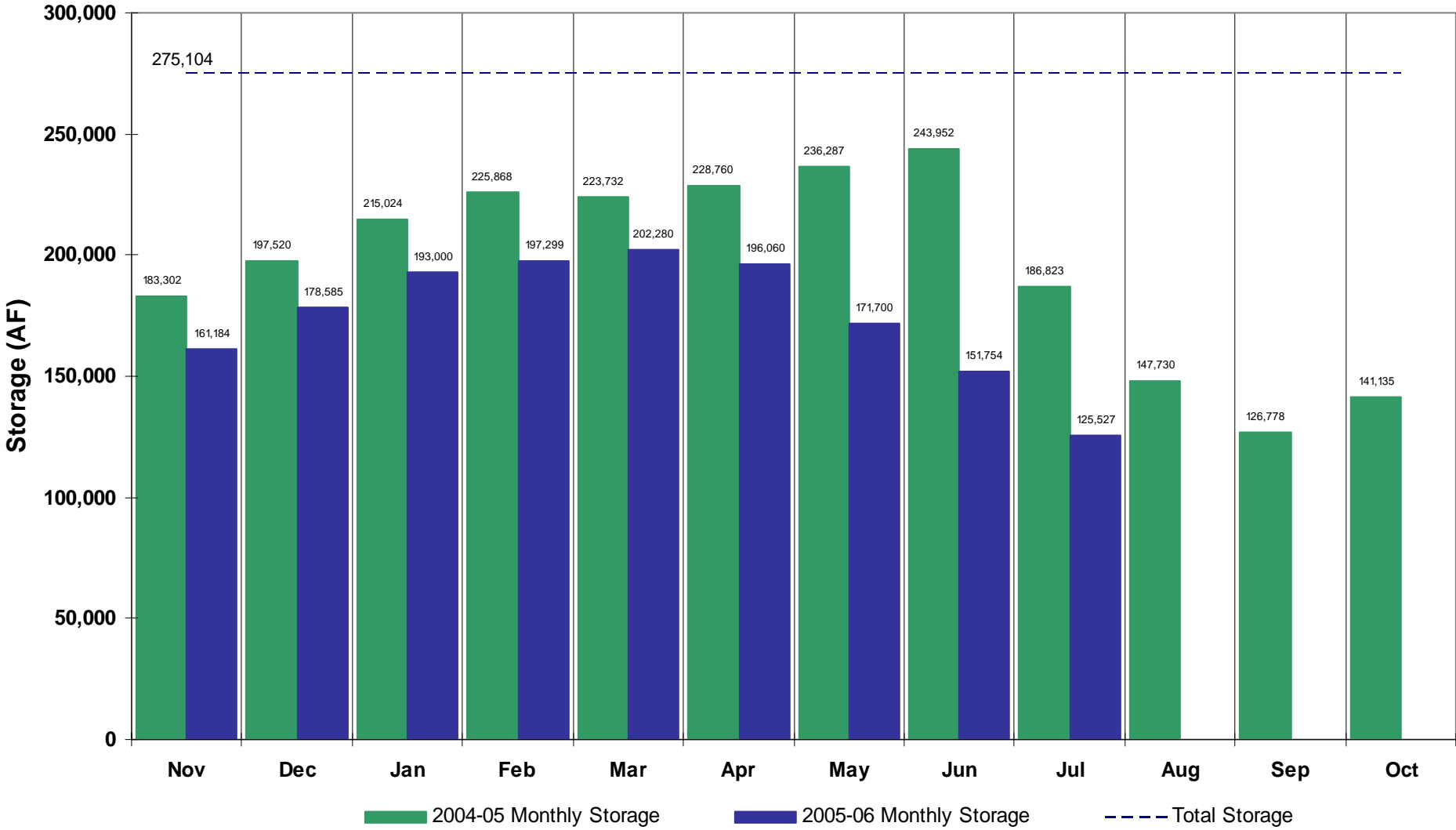
# Reservoir Storage above Kersey

Selected Reservoirs\*



\*Barr, Cobb, Fossil Crk, Halligan, Marshall, Milton, Union, Standley, Lower Latham, Boyd, Loveland, Windsor, Horse Crk, & Prospect

# South Platte Reservoirs Storage above Kersey\*



\*Barr, Cobb, Fossil Crk, Halligan, Marshall, Milton, Union, Standley, Lower Latham, Boyd, Loveland, Windsor, Horse Crk, & Prospect

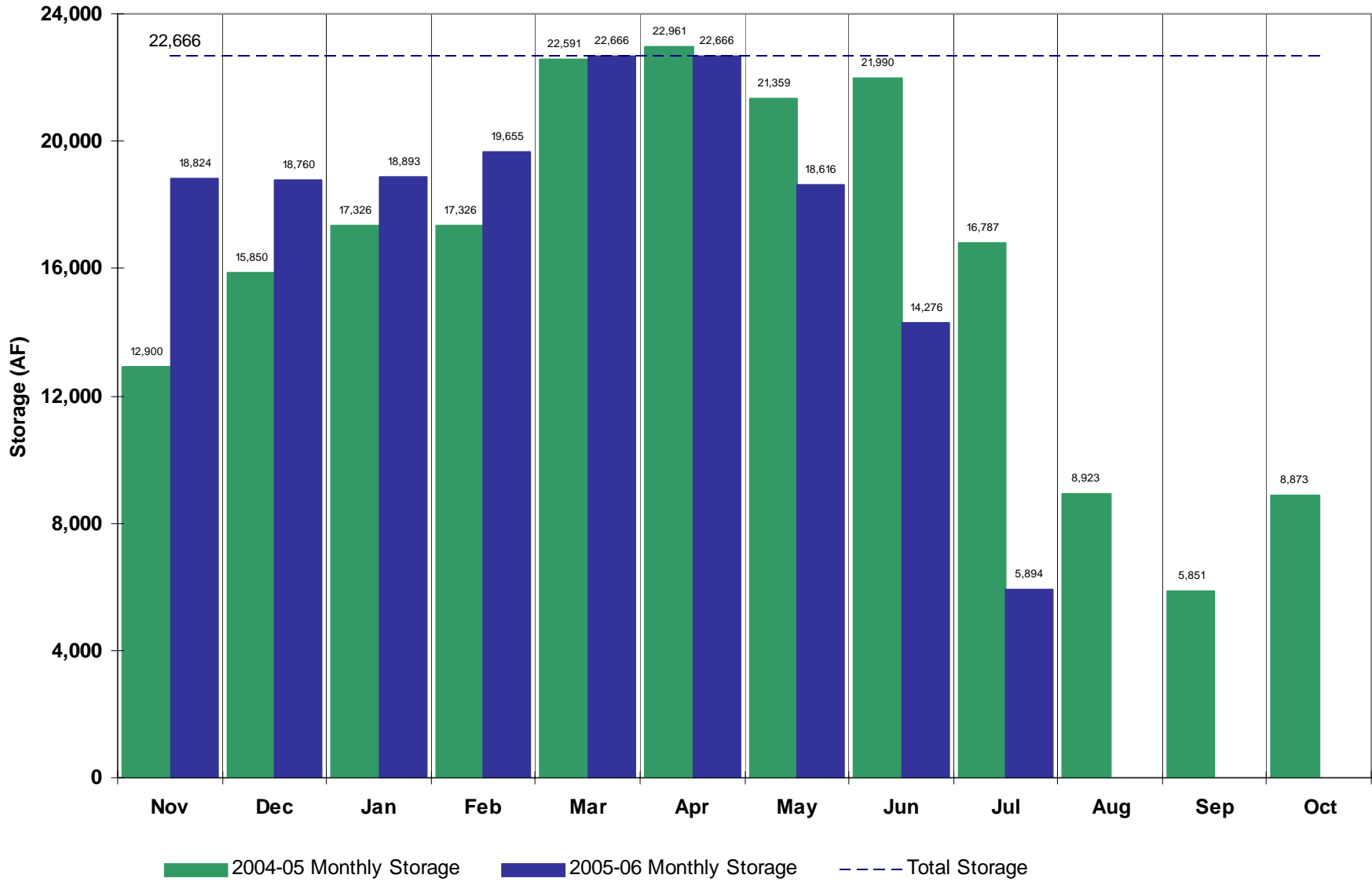
# Individual Reservoir Storage Follows



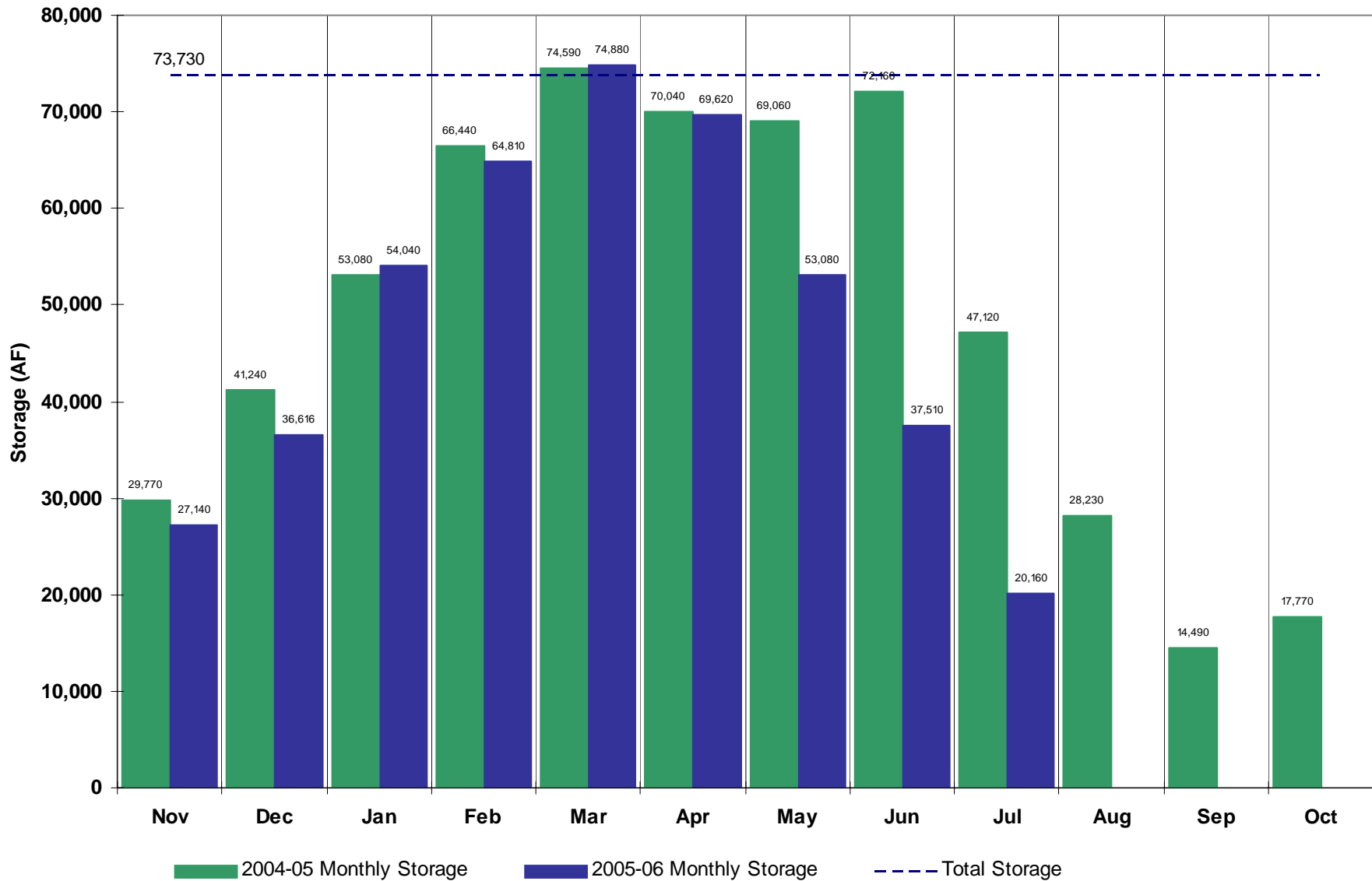
Denver in the rain  
(photo by Claudia Engelmann)

# Julesburg Reservoir

## (Agricultural)

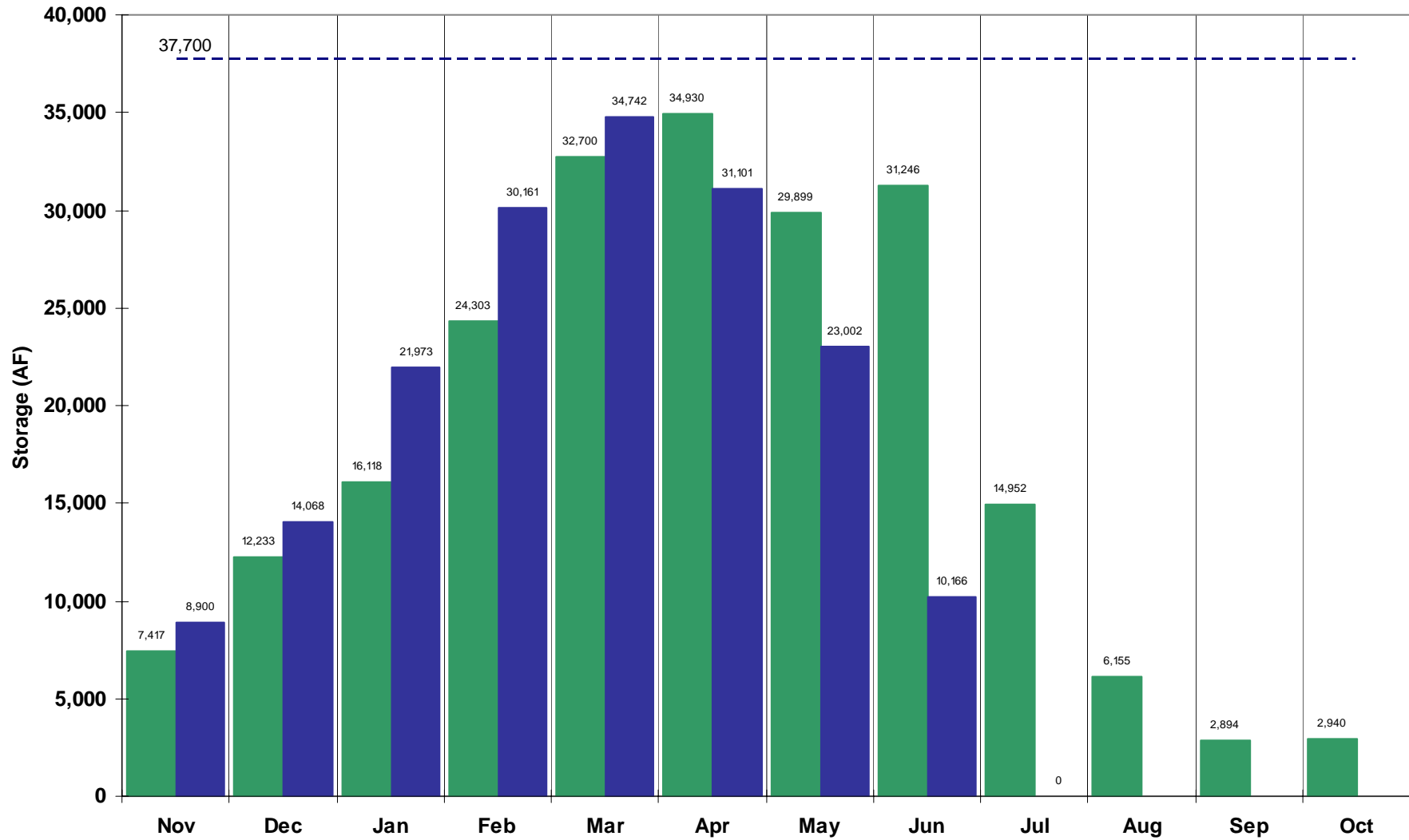


# North Sterling Reservoir (Agricultural)





# Empire Reservoir (Agricultural)



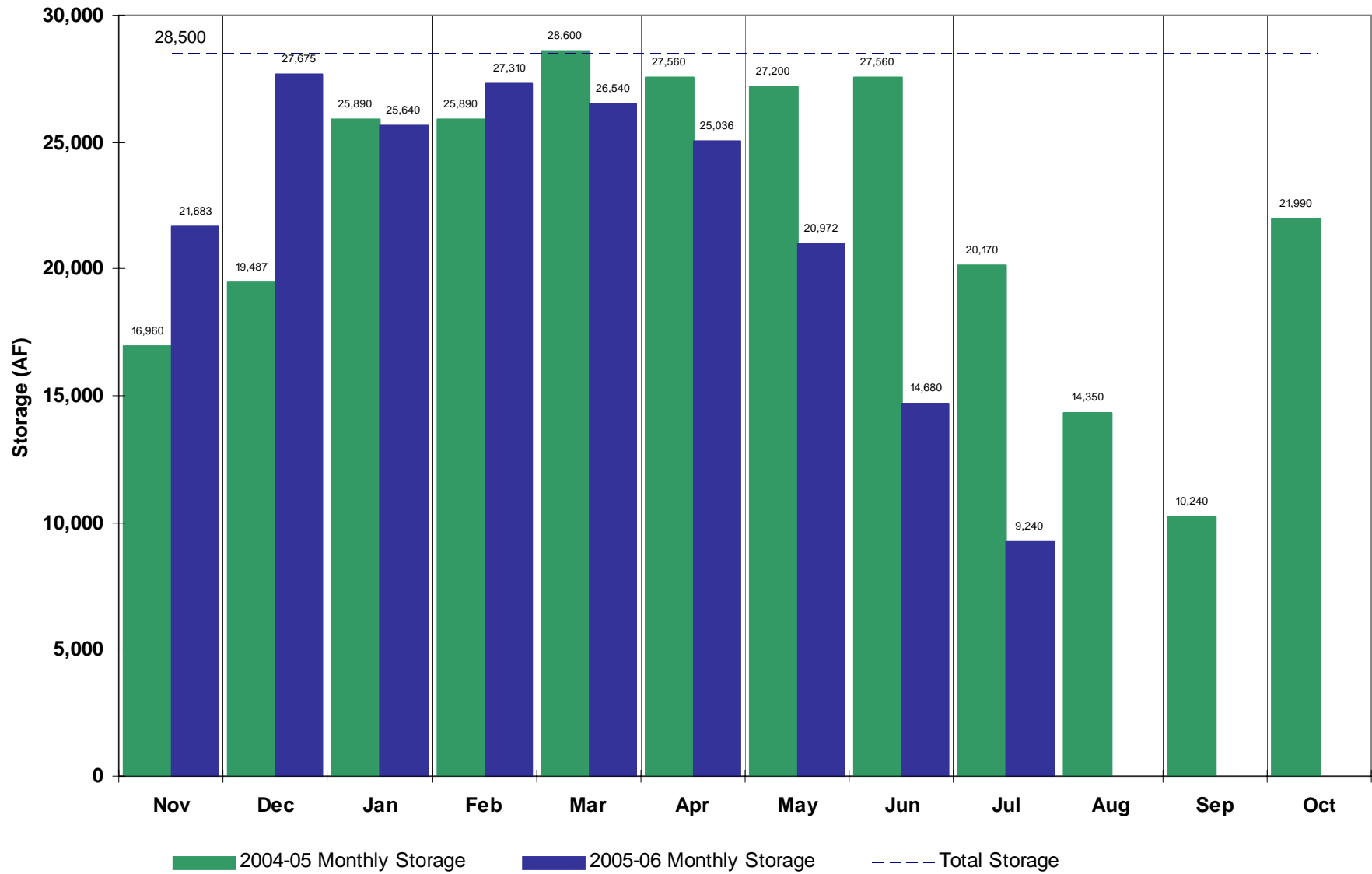
2004-05 Monthly Storage

2005-06 Monthly Storage

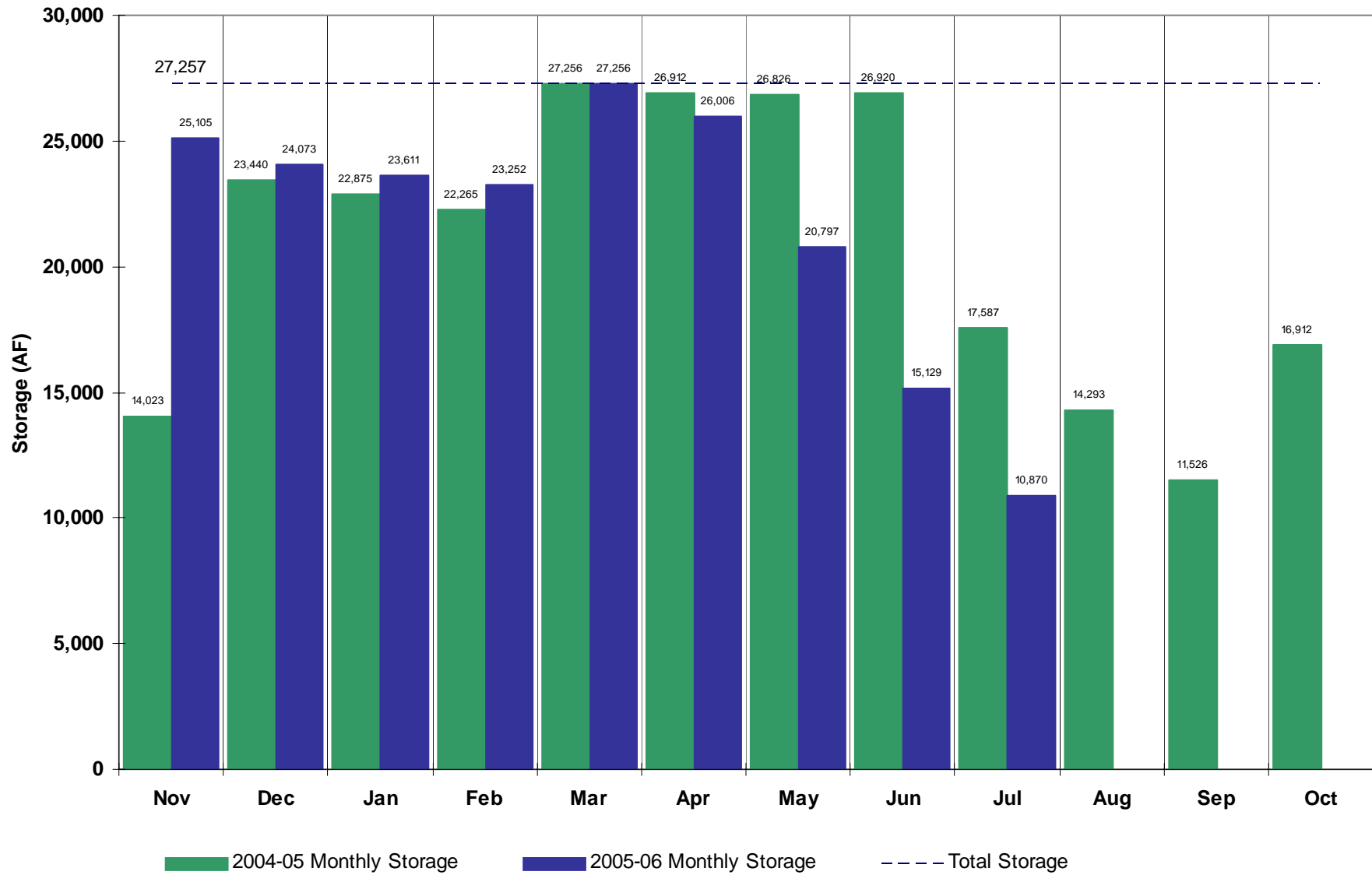
Total Storage

# Prewitt Reservoir

(Agricultural)

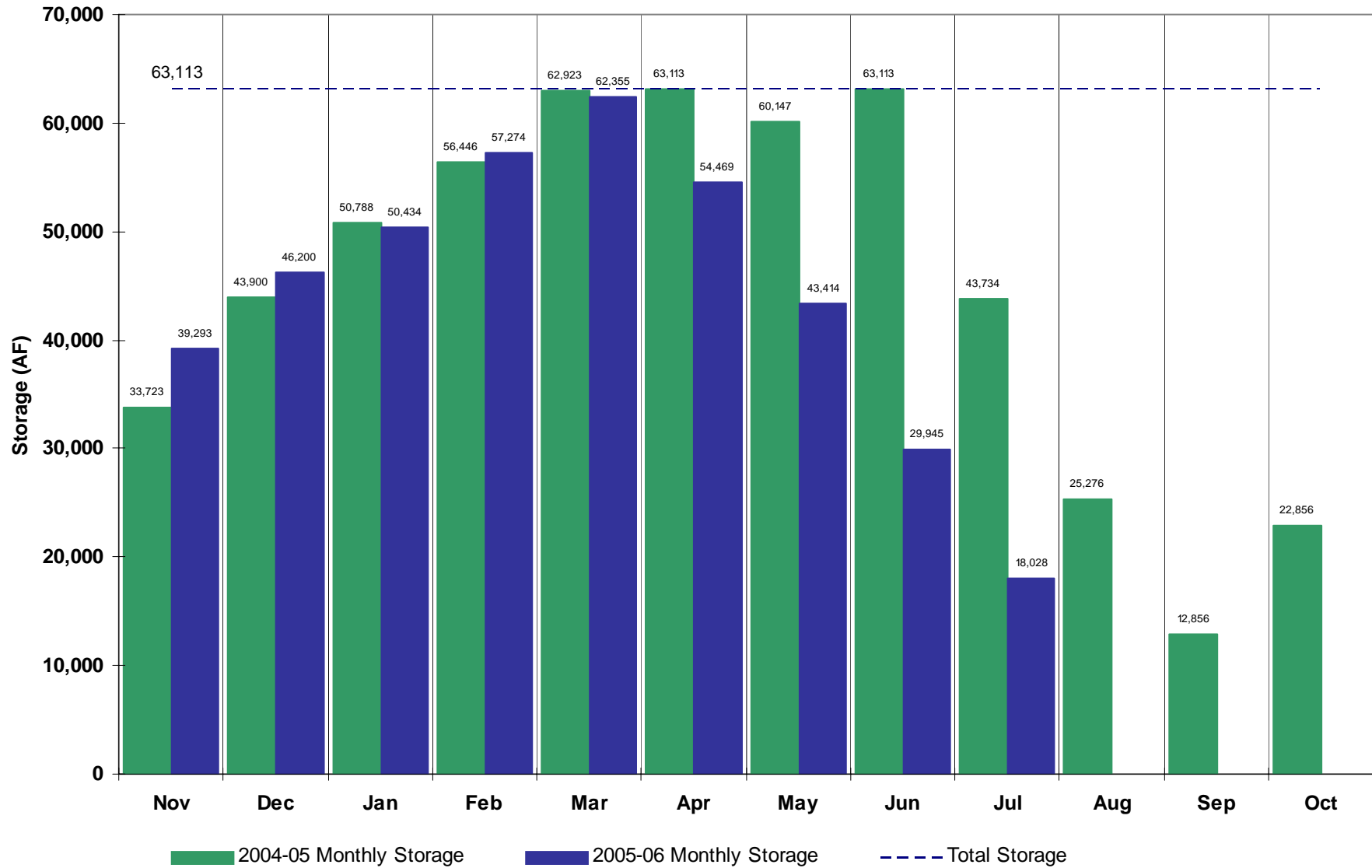


# Jackson Reservoir (Agricultural)

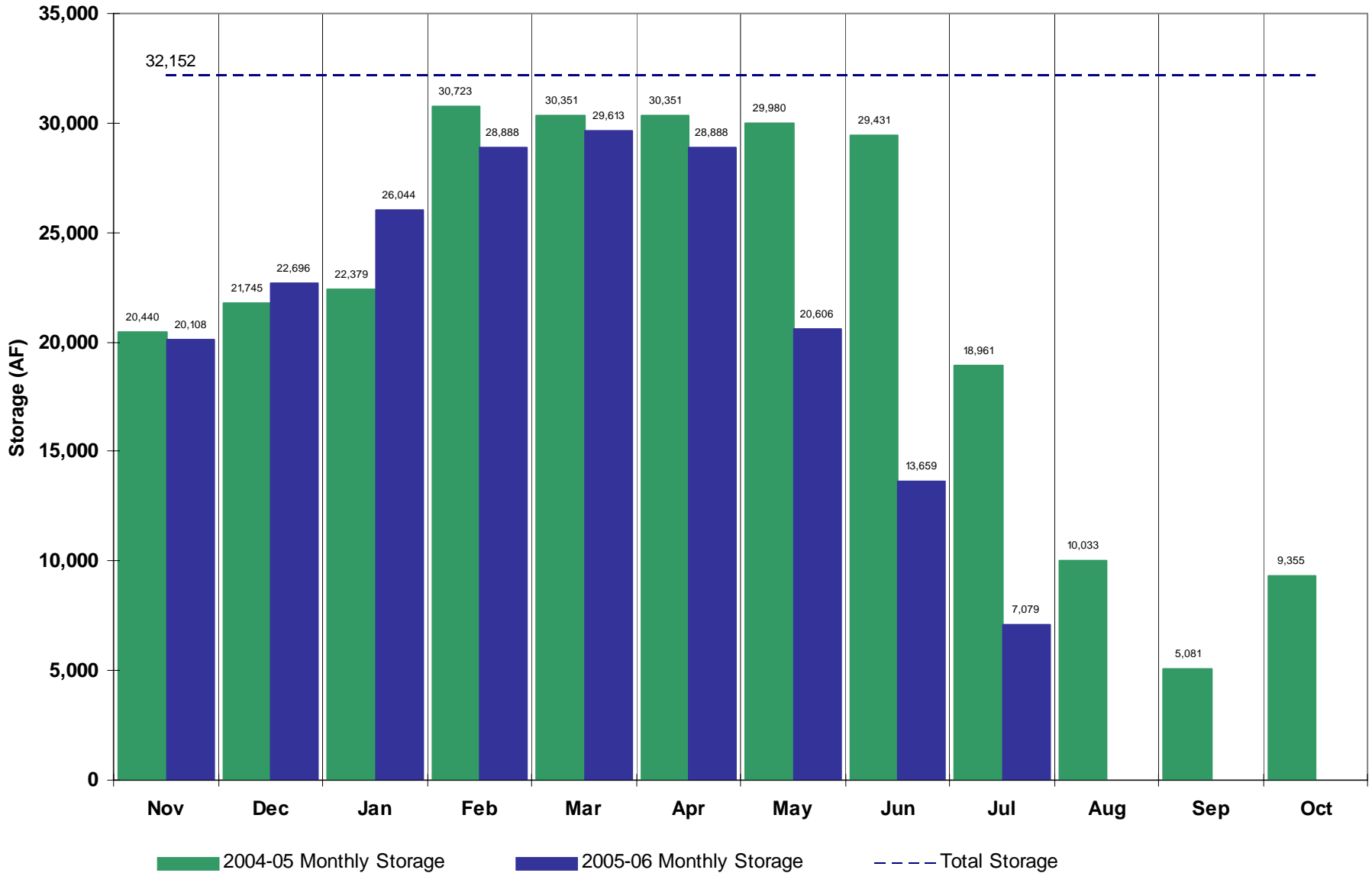


# Riverside Reservoir

## (Agricultural)

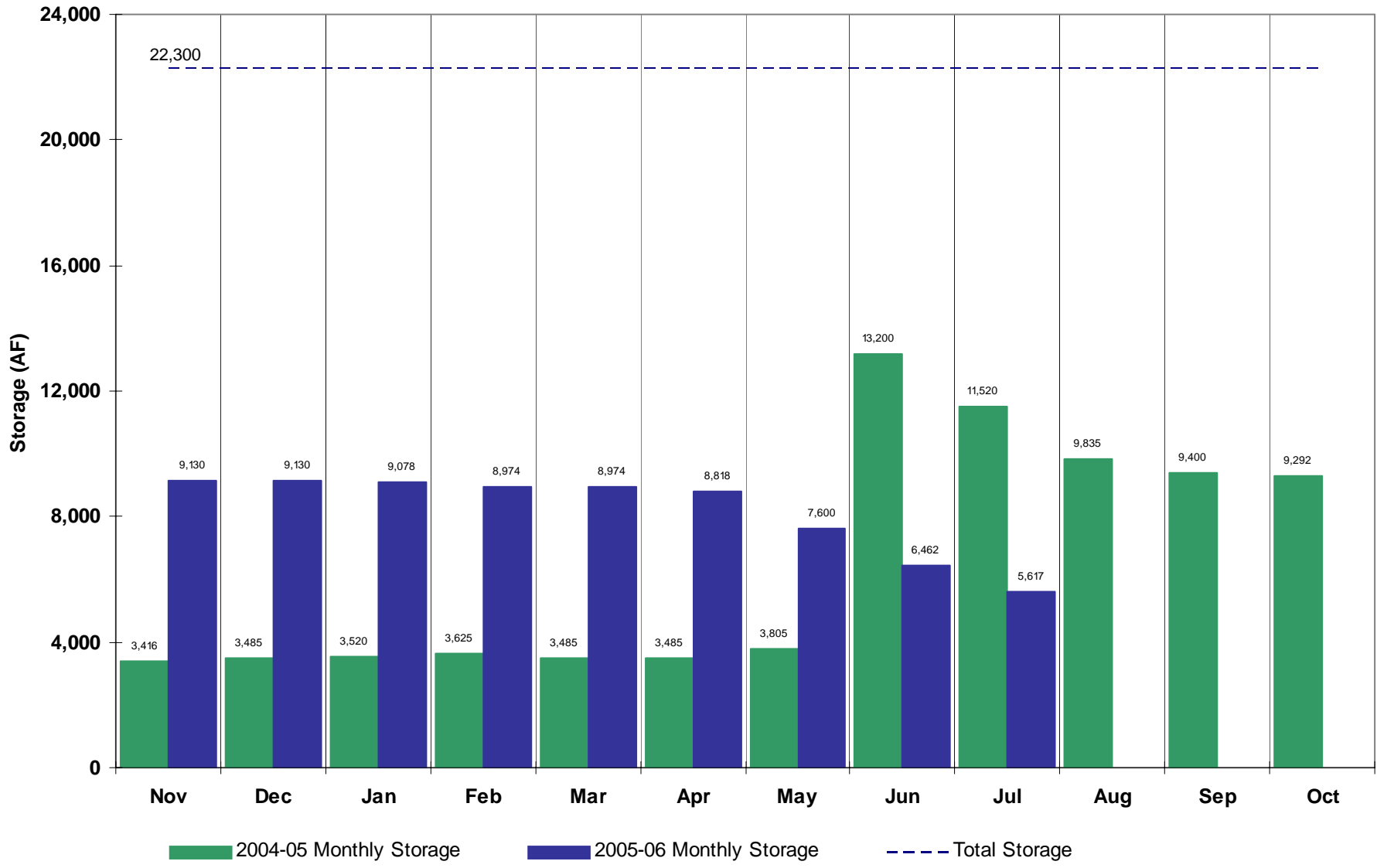


# Barr Lake (Agricultural)

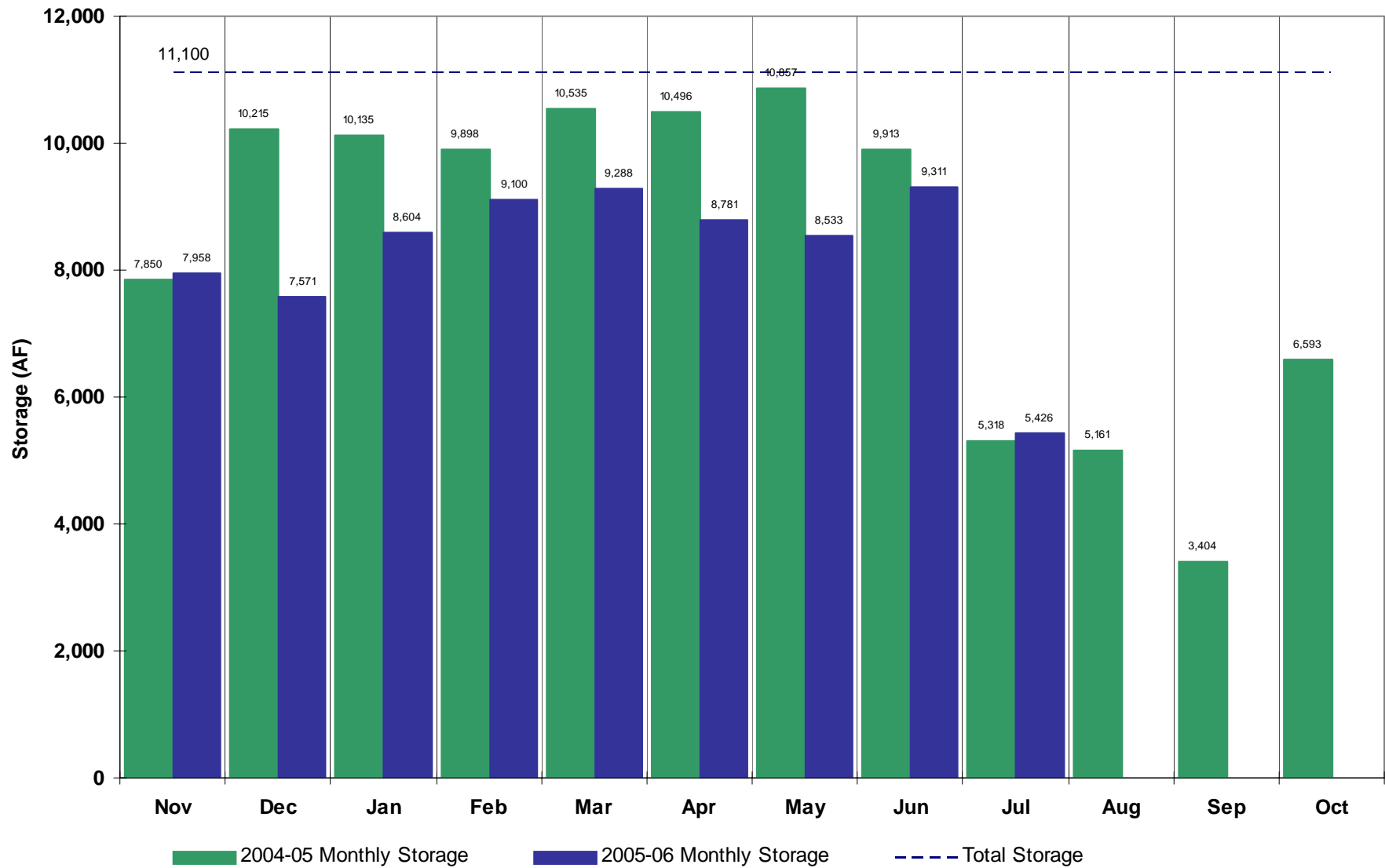


# Cobb Lake

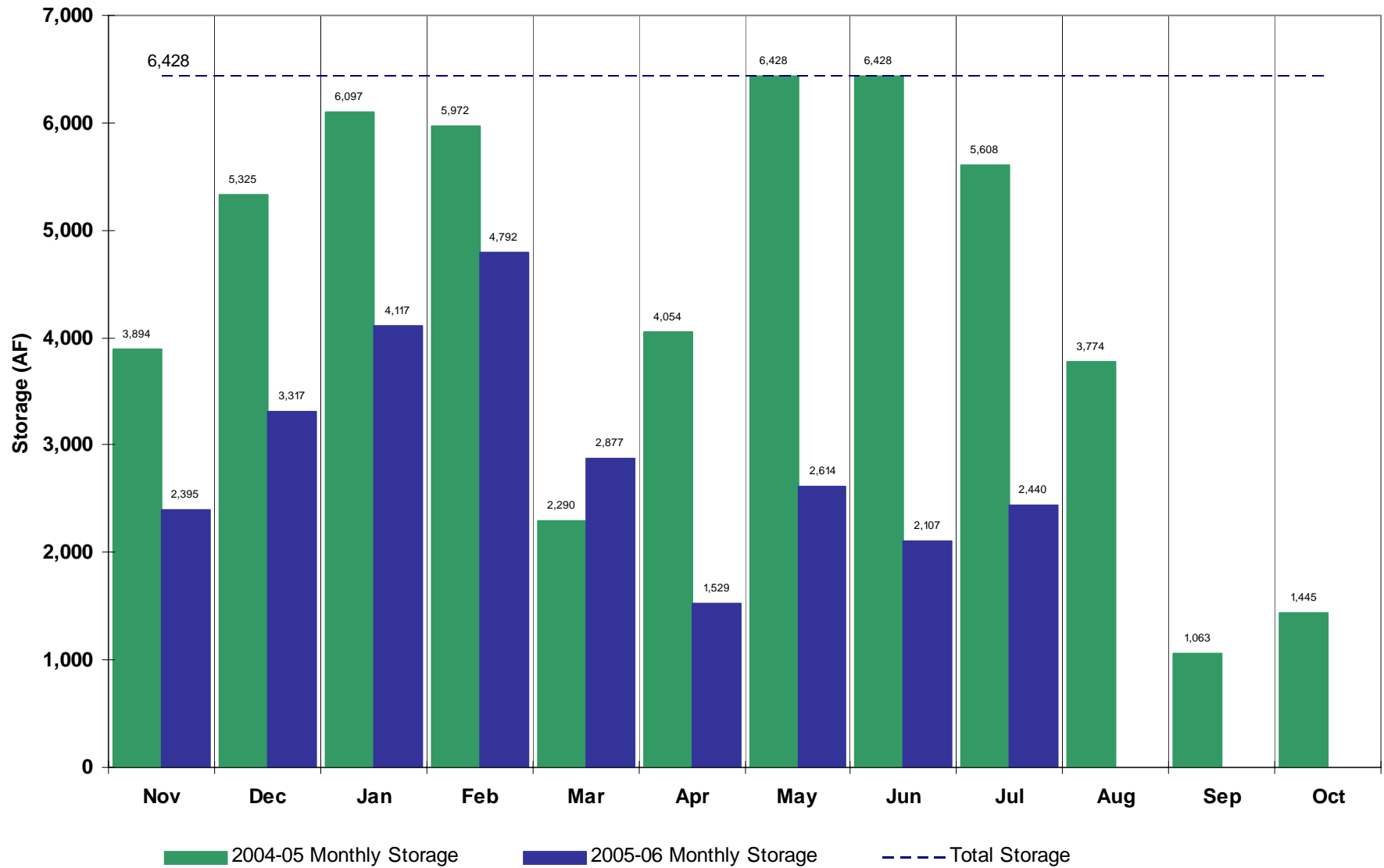
(Agricultural)



# Fossil Creek Reservoir (Agricultural)

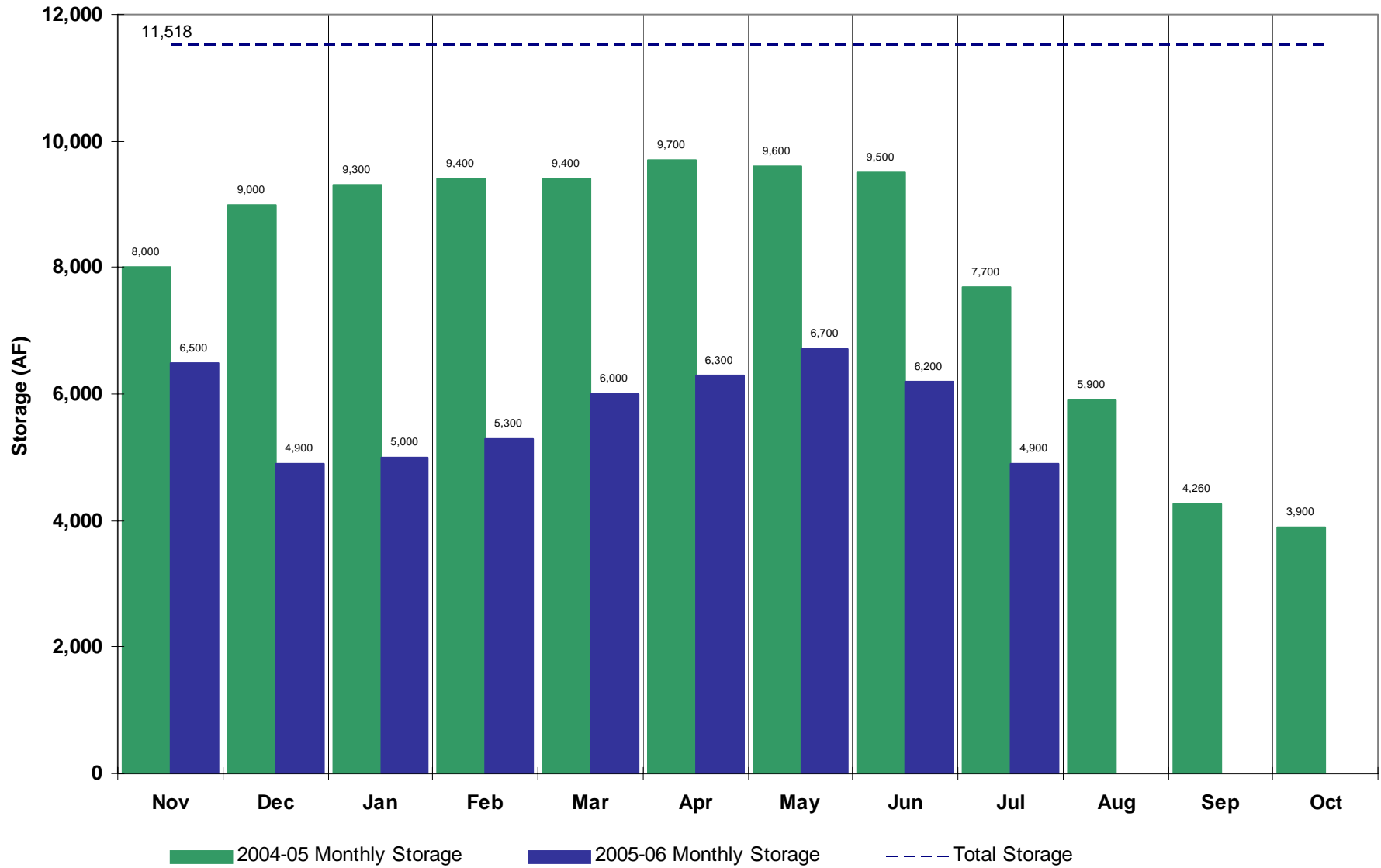


# Halligan Reservoir (Agricultural)

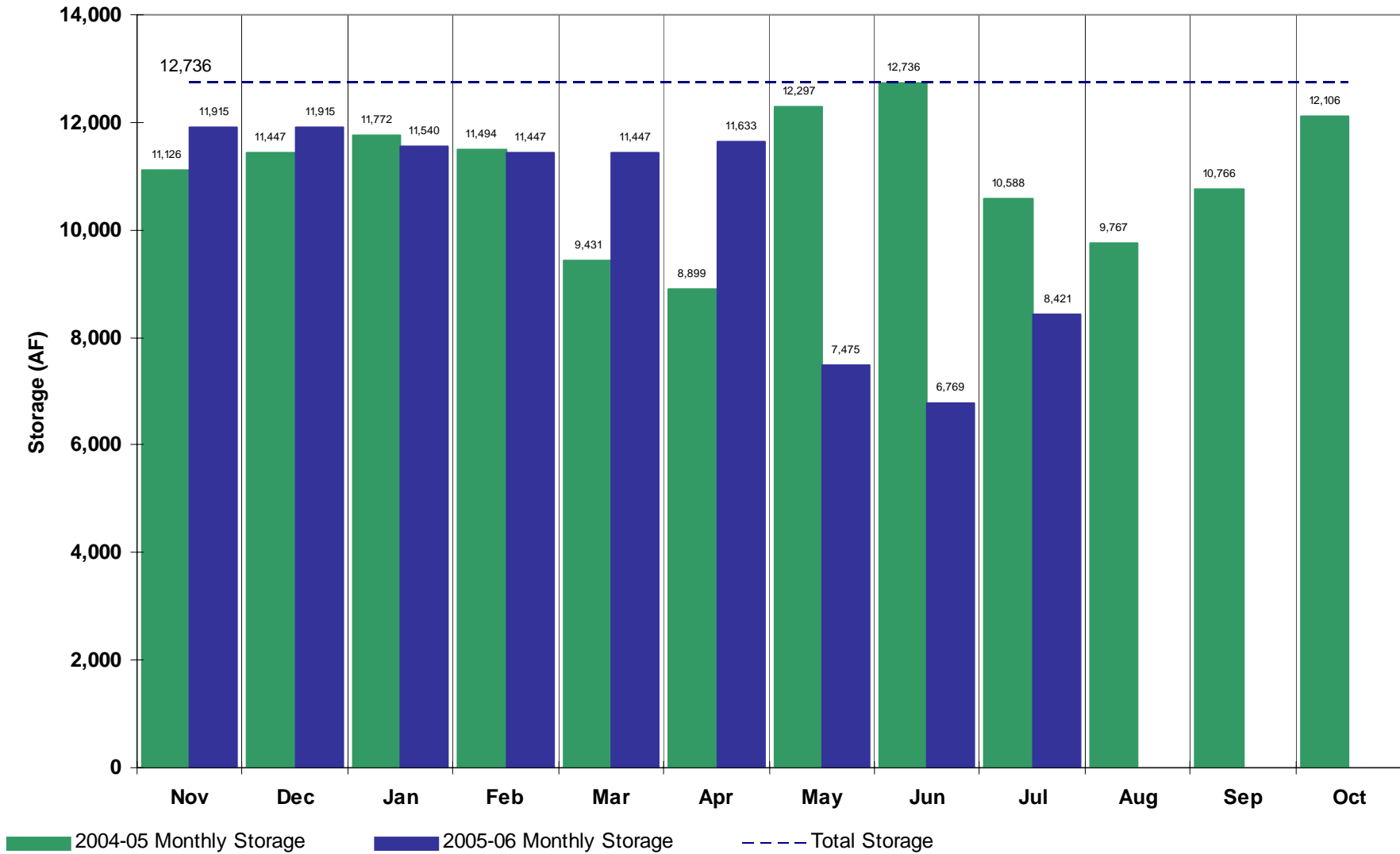




# Marshall Lake (Agricultural)

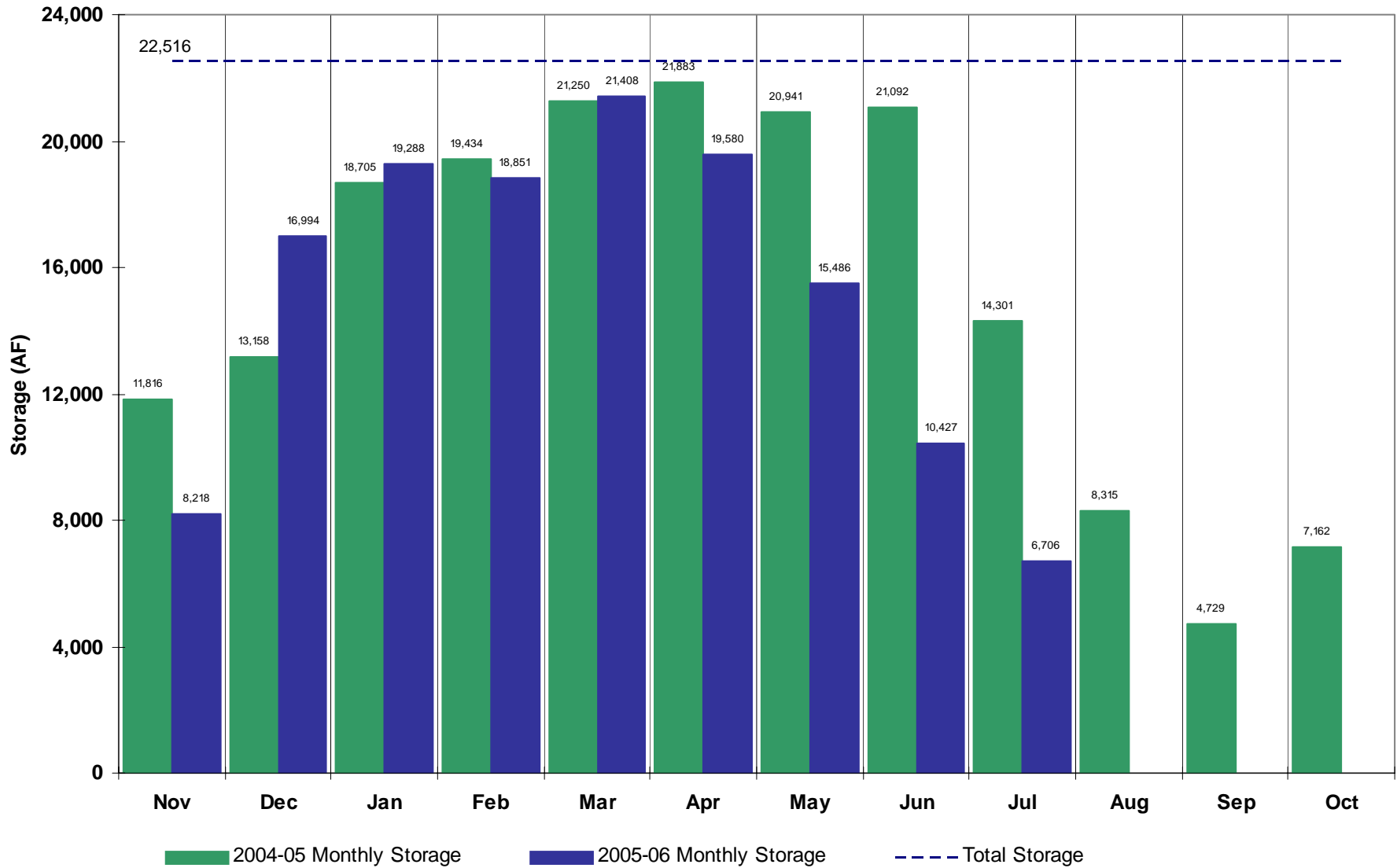


# Loveland Greeley Reservoir (Agricultural)

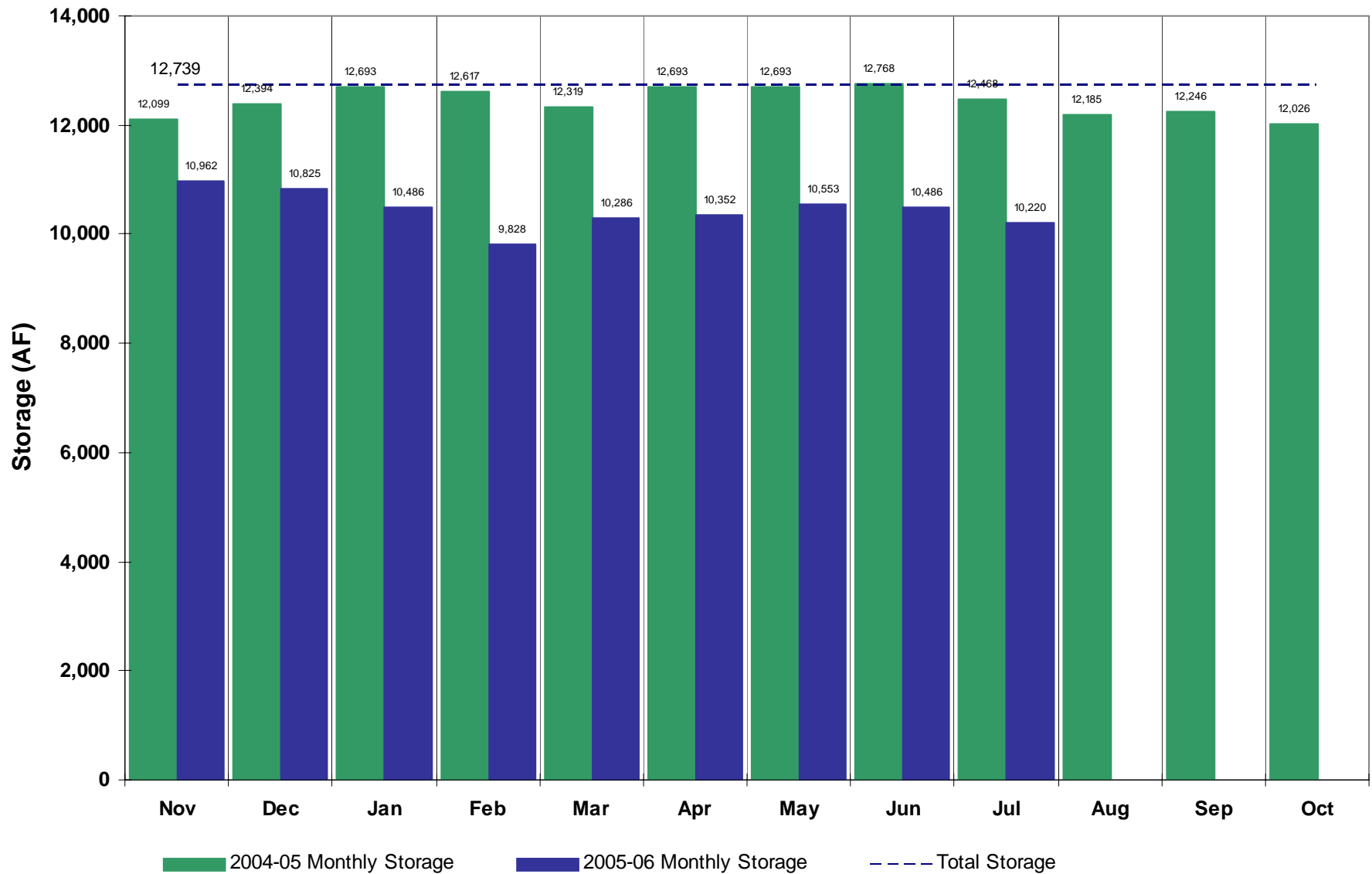


# Milton Reservoir

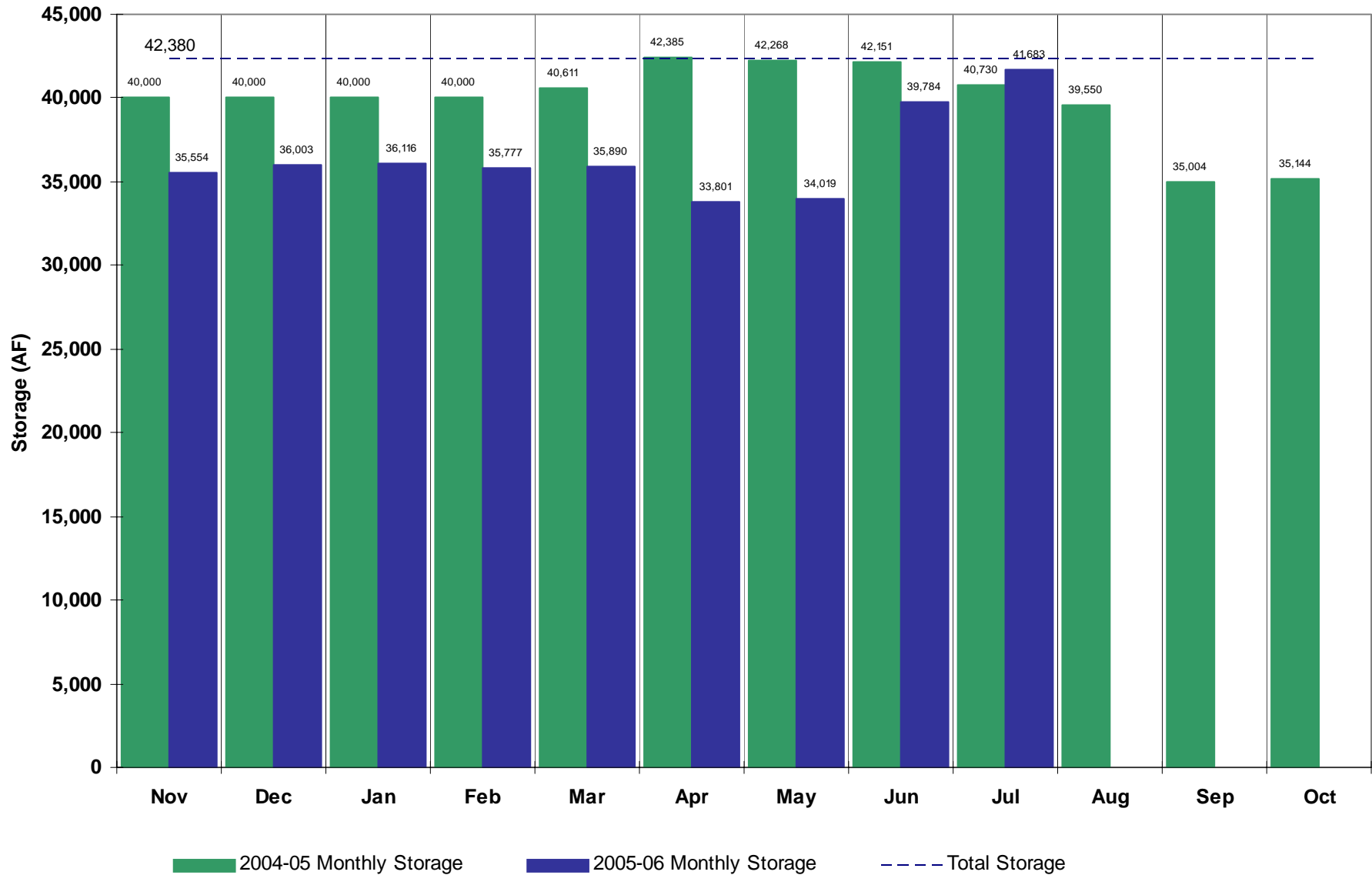
(Agricultural)



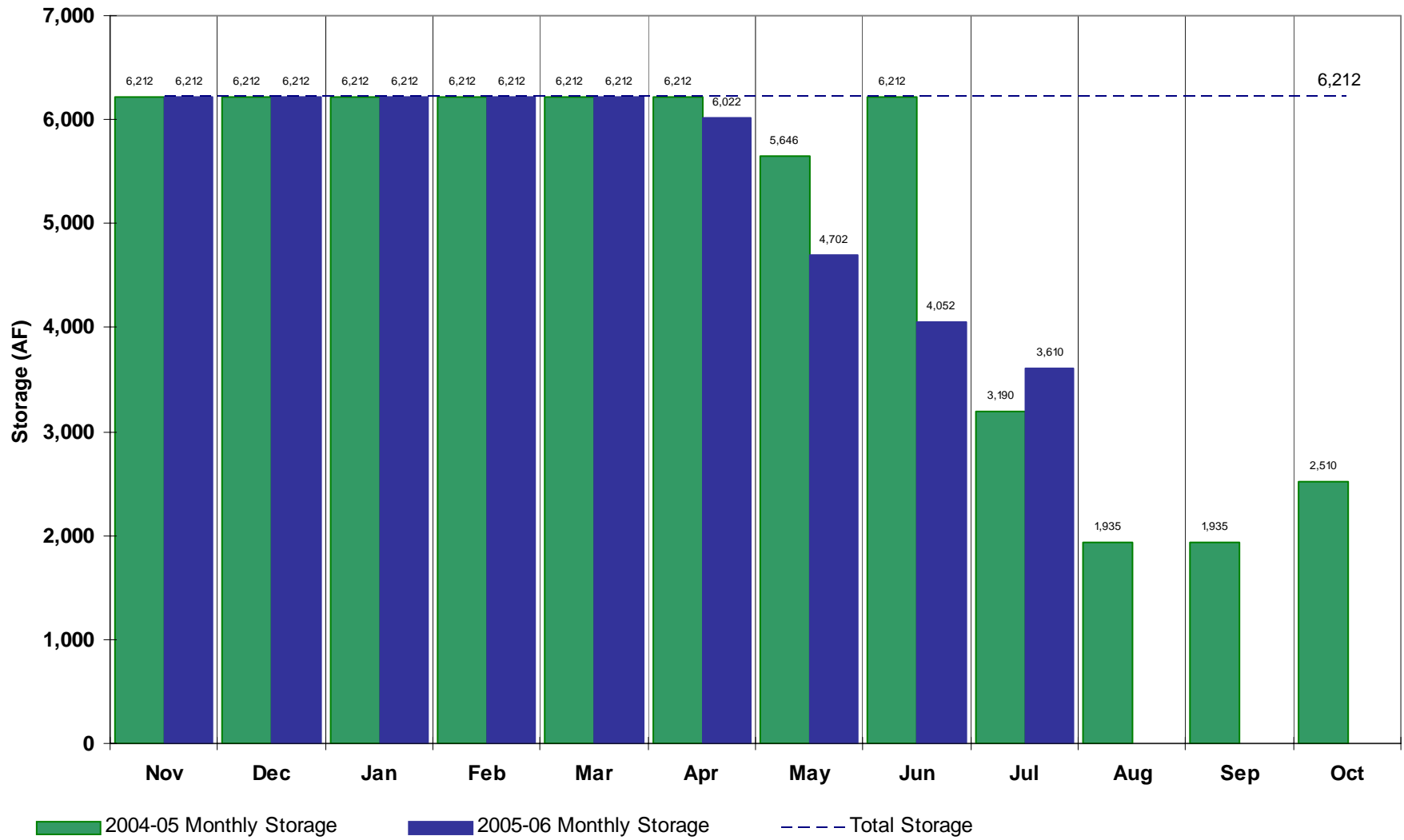
# Union Reservoir (Agricultural)



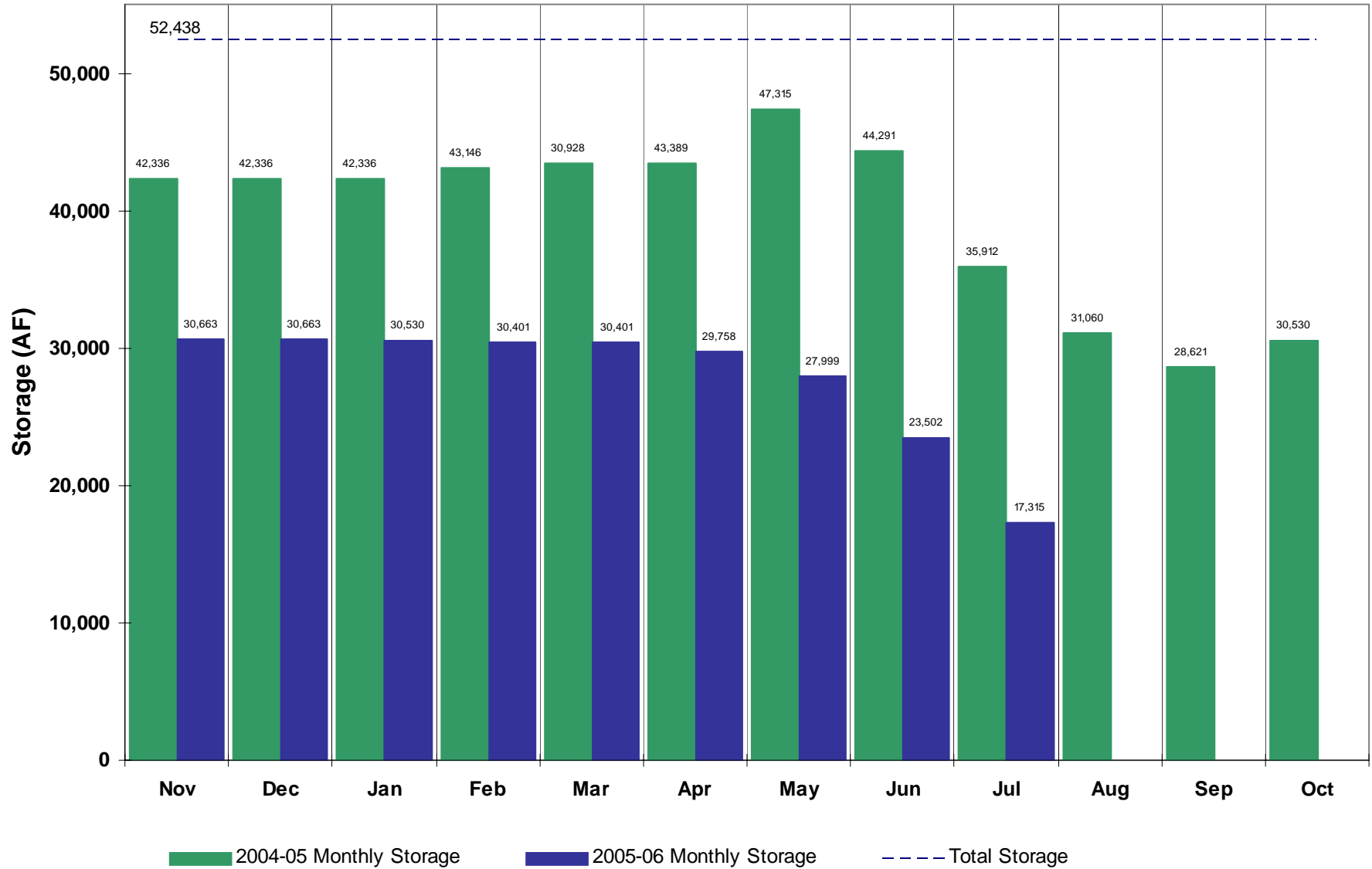
# Standley Lake (Agricultural)



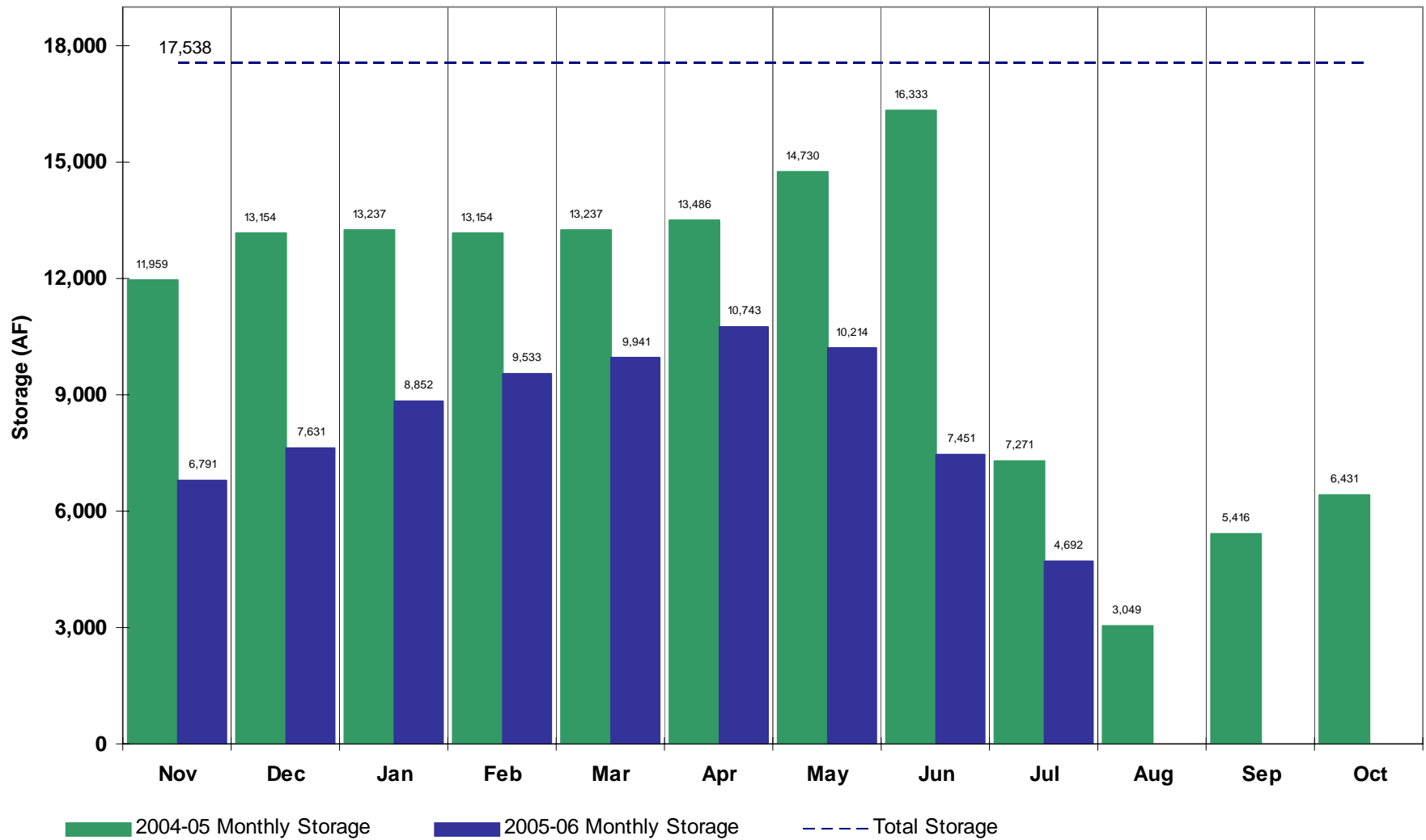
# Lower Latham Reservoir (Agricultural)



# Boyd Lake (Agricultural)



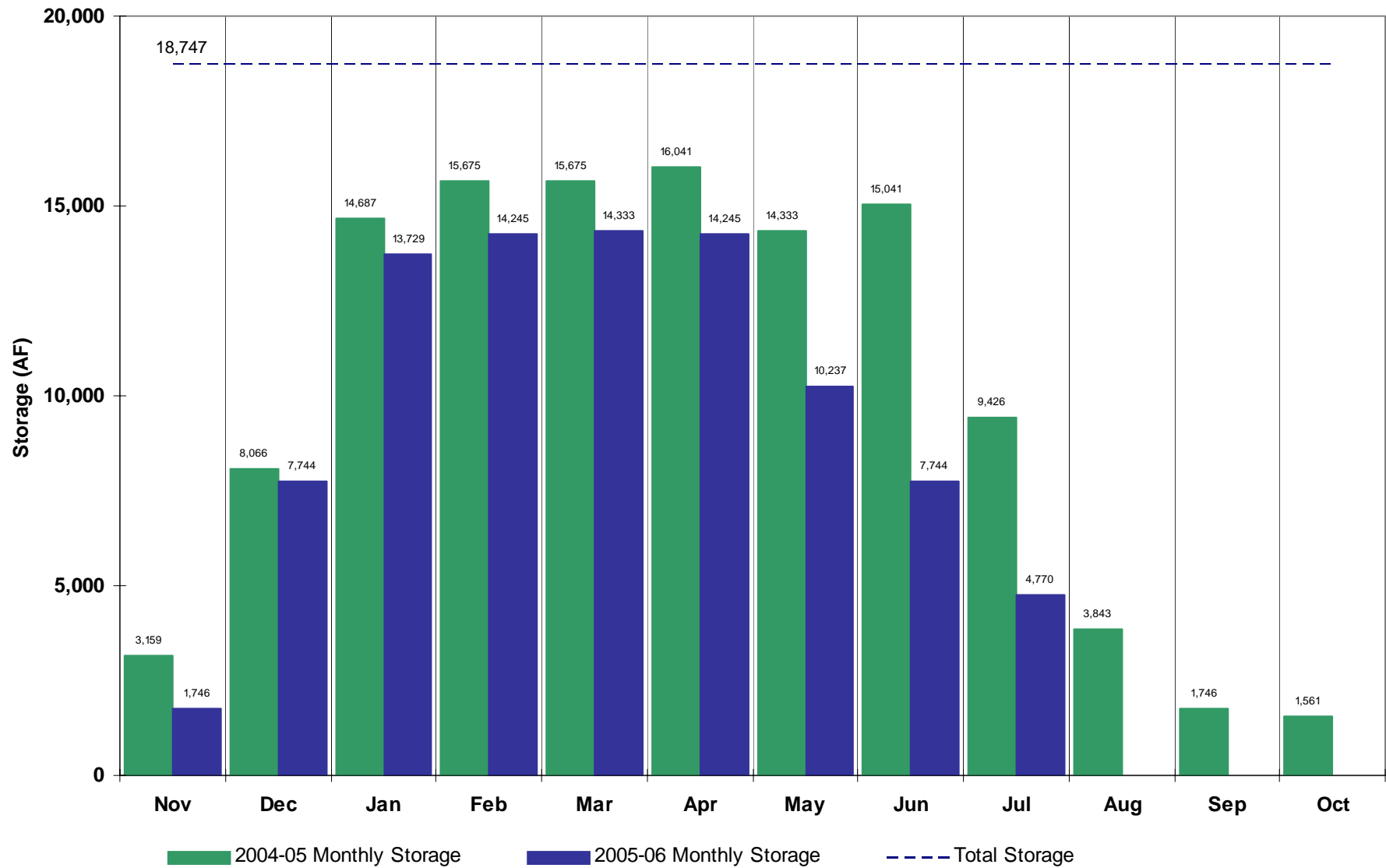
# Windsor Reservoir (Agricultural)



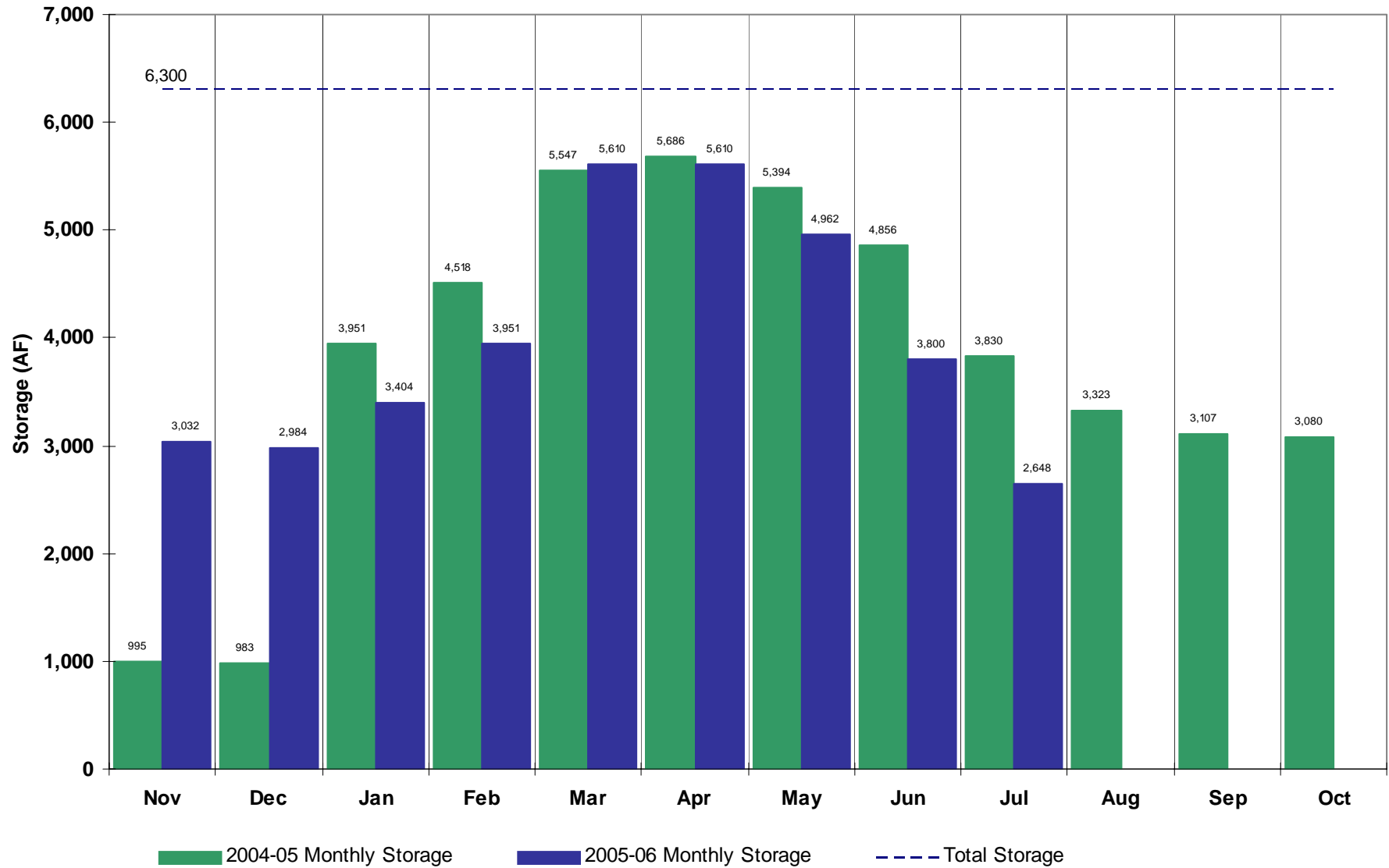


# Horse Creek Reservoir

(Agricultural)

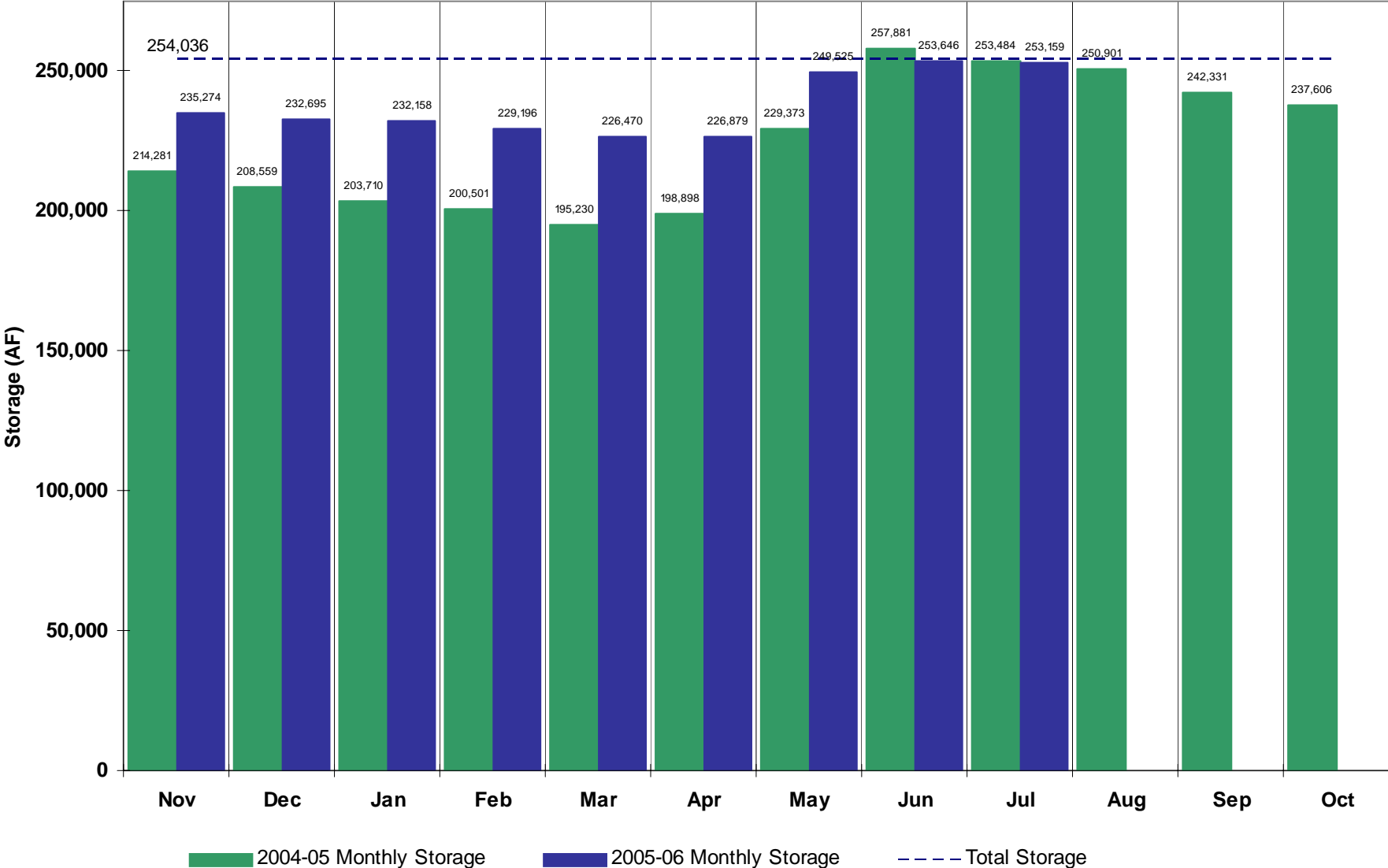


# Prospect Reservoir (Agricultural)



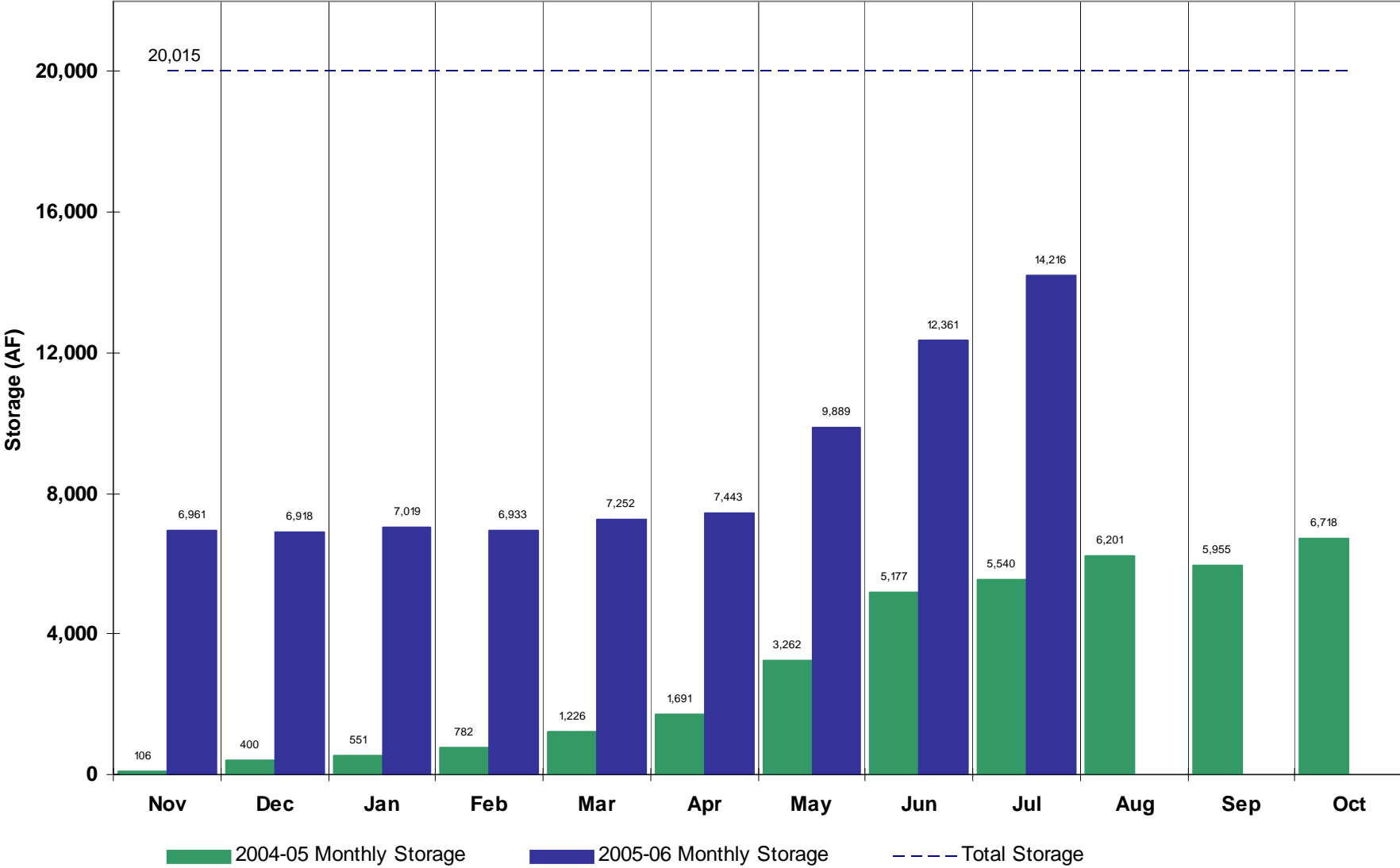
# Dillon Reservoir

(Municipal)



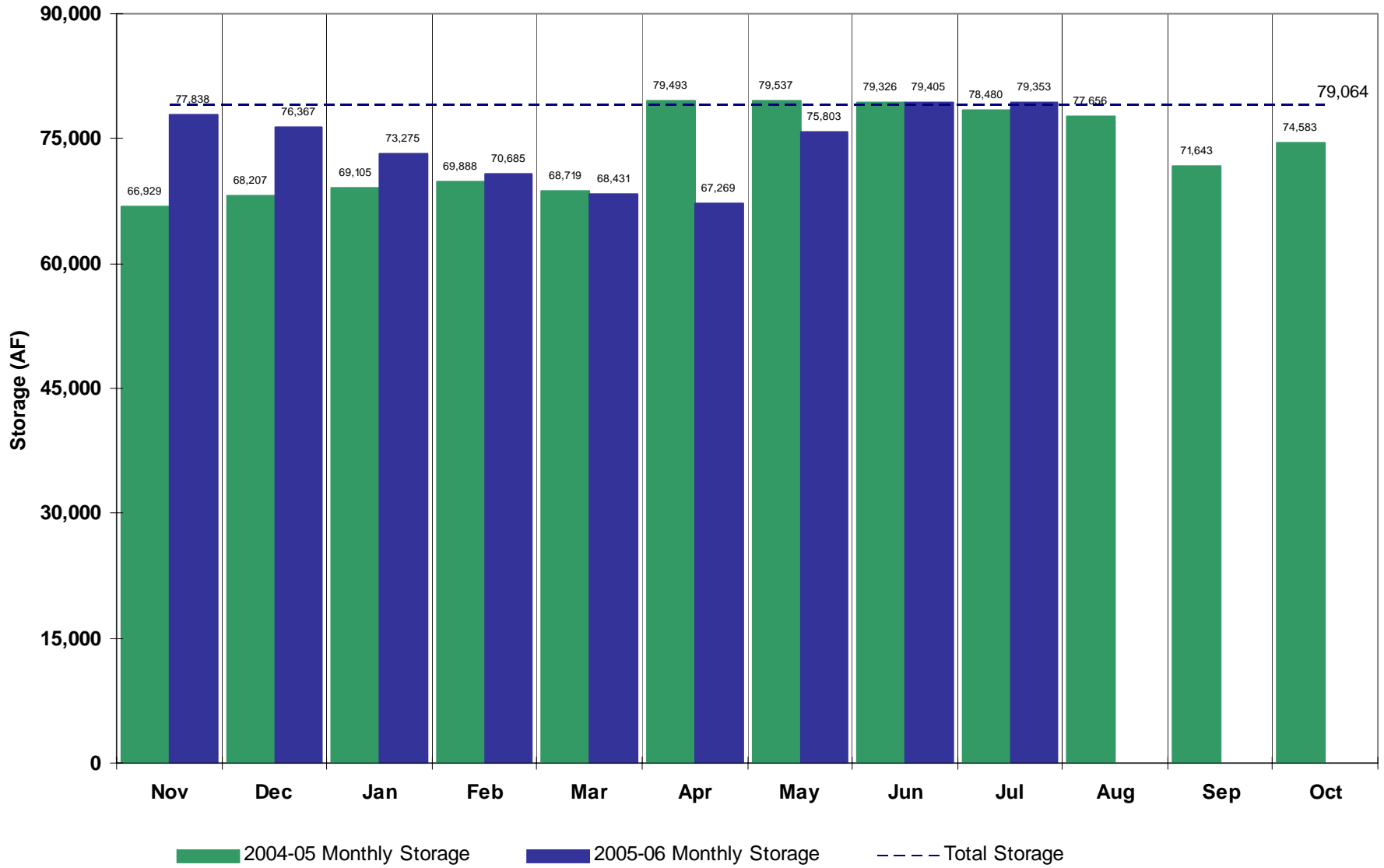
# Antero Reservoir

(Municipal)

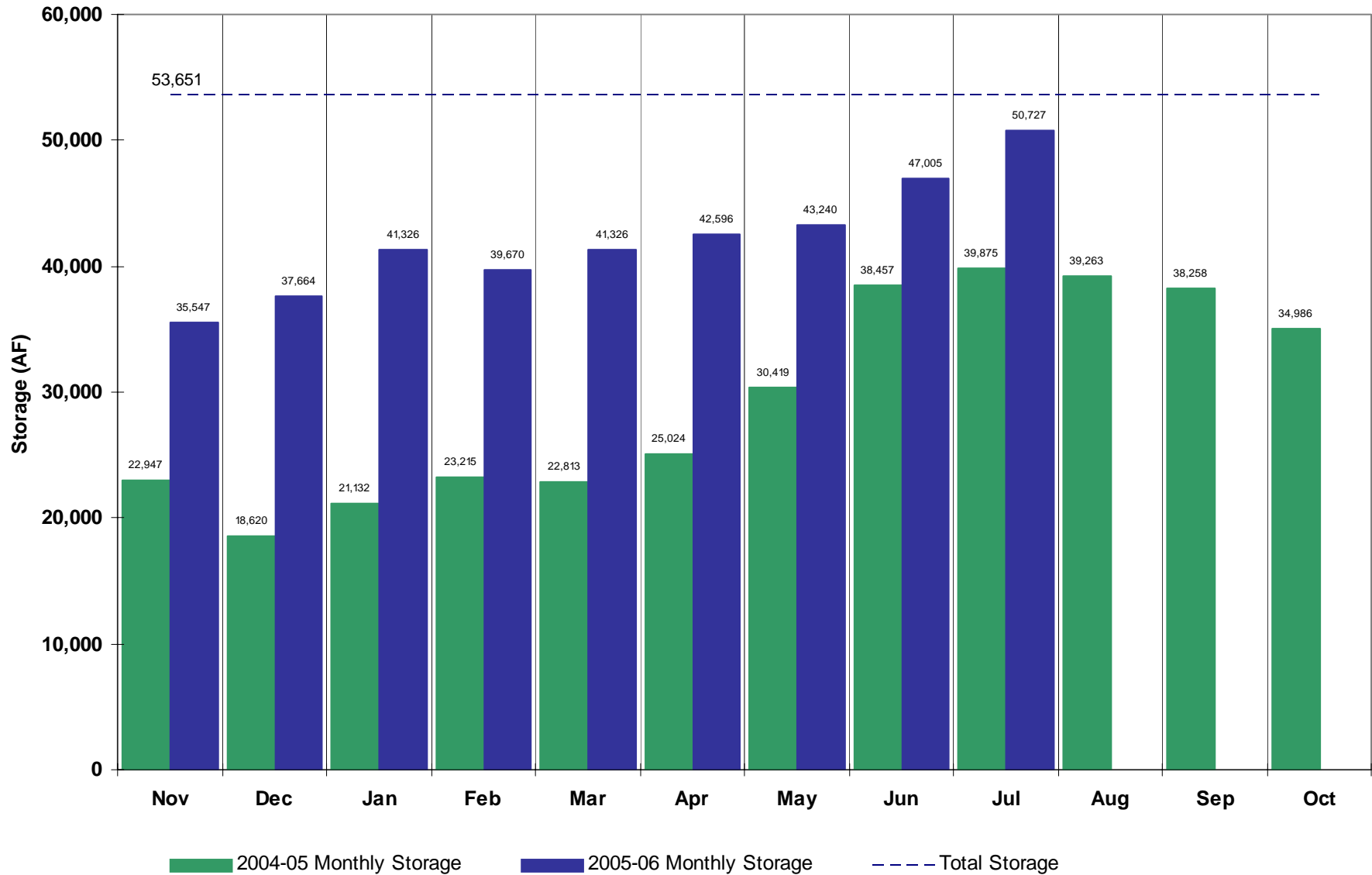


# Cheesman Reservoir

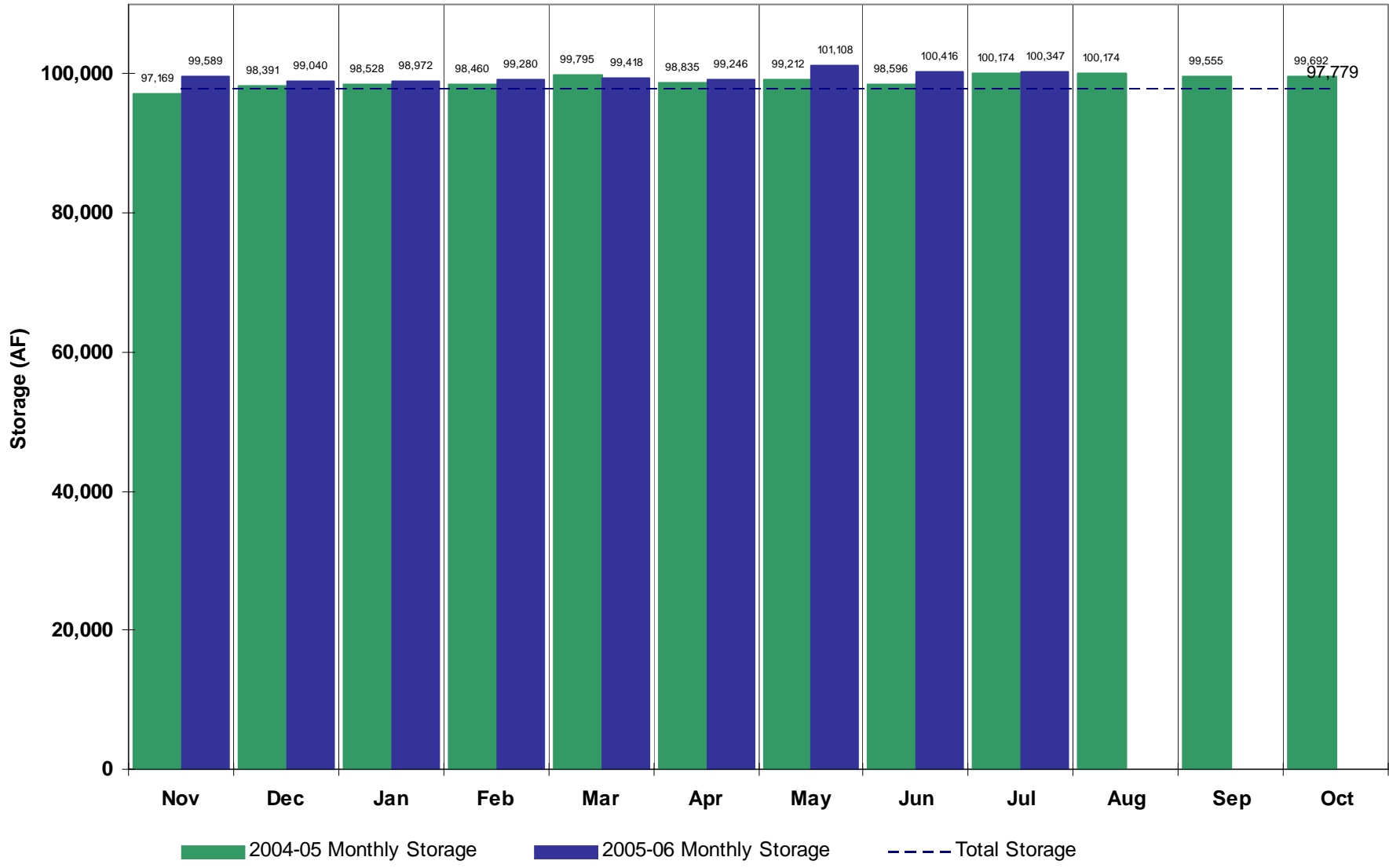
## (Municipal)



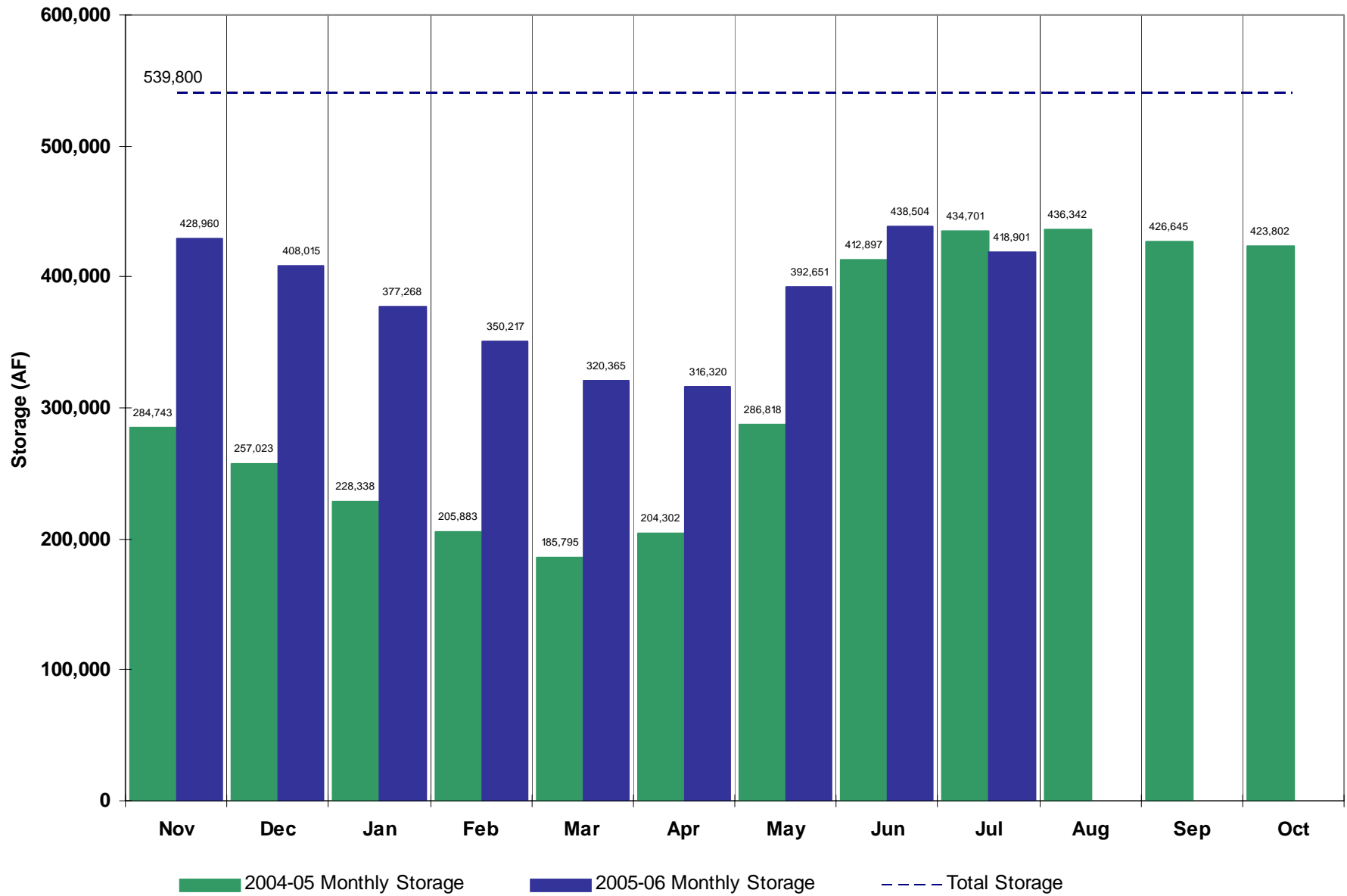
# Spinney Mountain Reservoir (Municipal)



# Eleven Mile Reservoir (Municipal)



# Lake Granby





**All data is collected by the personnel  
of Division 1 and is subject to revision.**



**Storm Clouds (Photo by Jana Ash)**