

A scenic view of a river with a cable car carrying two people. The cable car is suspended from a wire and is moving across the river. The background is a lush green forest. The text "South Platte Summary" is overlaid in large yellow letters with a white outline. Below it, "June 2004" is also in yellow with a white outline. In the bottom left, there is a credit line: "By John Lochhead for The Colorado Division of Water Resources". In the bottom right, it says "Cable measurement at South Platte Colorado".

South Platte Summary

June 2004

By John Lochhead for The
Colorado Division of Water
Resources

Cable measurement at South Platte Colorado

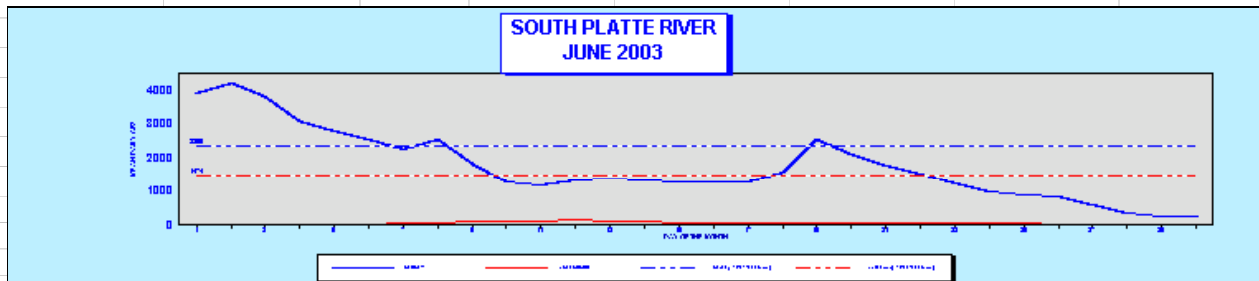
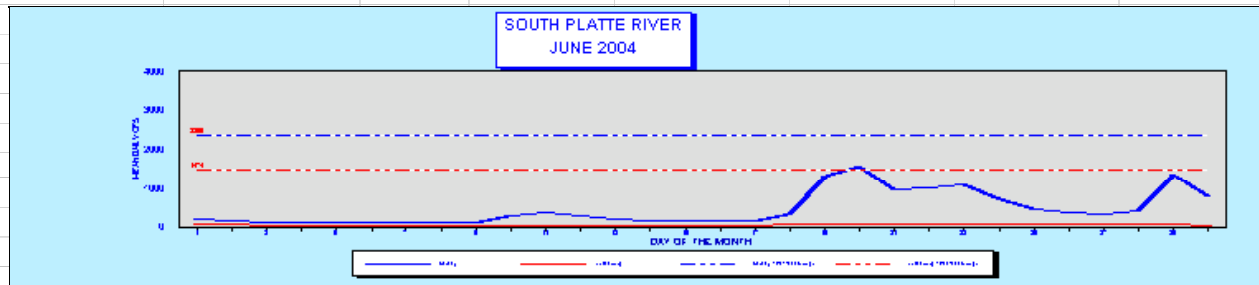
COLORADO DIVISION OF WATER RESOURCES, DIVISION 1

MONTH OF JUNE 2004

07-Jul

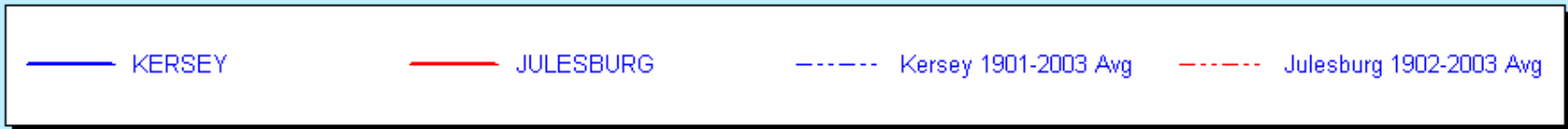
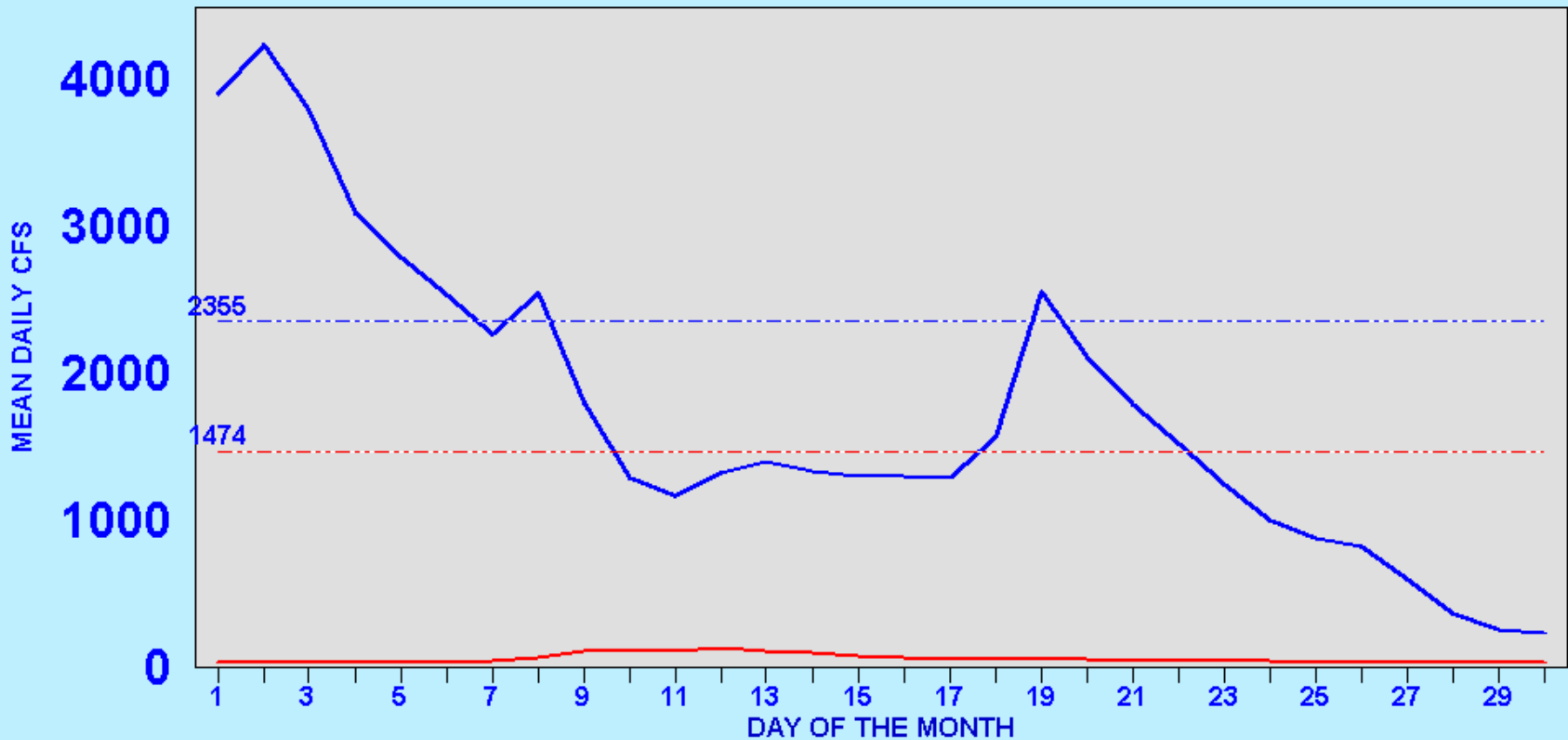
RESERVOIR	FULL ALLOWABLE CAPACITY (ACRE FEET)	FIRST OF MONTH (ACRE FEET)	END OF MONTH (ACRE FEET)	DISTRICT	CHANGE IN STORAGE (ACRE FEET)	% CHANGE IN STORAGE BASED ON FIRST OF MONTH STORAGE	% OF CURRENT FULL ALLOWABLE CAPACITY	% OF CURRENT FULL ALLOWABLE CAPACITY THIS MONTH, (LAST YEAR)	SURCHARGE (ACRE FEET)
JULESBURG	22,666	20,504	19,655	64	(849)	-4%	87%	87%	0
NORTH STERLING	73,730	49,020	47,890	64	(1,130)	-2%	65%	98%	0
PREWITT	28,500	10,730	10,940	64	210	2%	38%	96%	0
JACKSON	27,257	23,389	21,380	1	(2,009)	-9%	78%	98%	0
EMPIRE	37,700	16,077	10,365	1	(5,712)	-36%	27%	70%	0
RIVERSIDE	63,113	41,813	34,153	1	(7,660)	-18%	54%	95%	0
BARR LAKE	31,652	20,000	18,035	2	(1,965)	-10%	57%	96%	0
CHEESMAN	79,064	66,984	72,834	80	5,850	9%	92%	94%	0
ELEVEN MILE	97,779	79,319	80,103	23	784	1%	82%	52%	0
SPINNEY	53,651	26,487	33,885	23	7,398	28%	63%	63%	0
ANTERO	20,015	1,354	97	23	(1,257)	-93%	0%		0

RIVER GAGES	MEAN DAILY FLOW (CFS)
KERSEY	444
JULESBURG	39
THIS MONTH LAST YEAR	
KERSEY	1,748
JULESBURG	57
MEAN FOR PERIOD OF RECORD*	
KERSEY	2355
JULESBURG	1,474

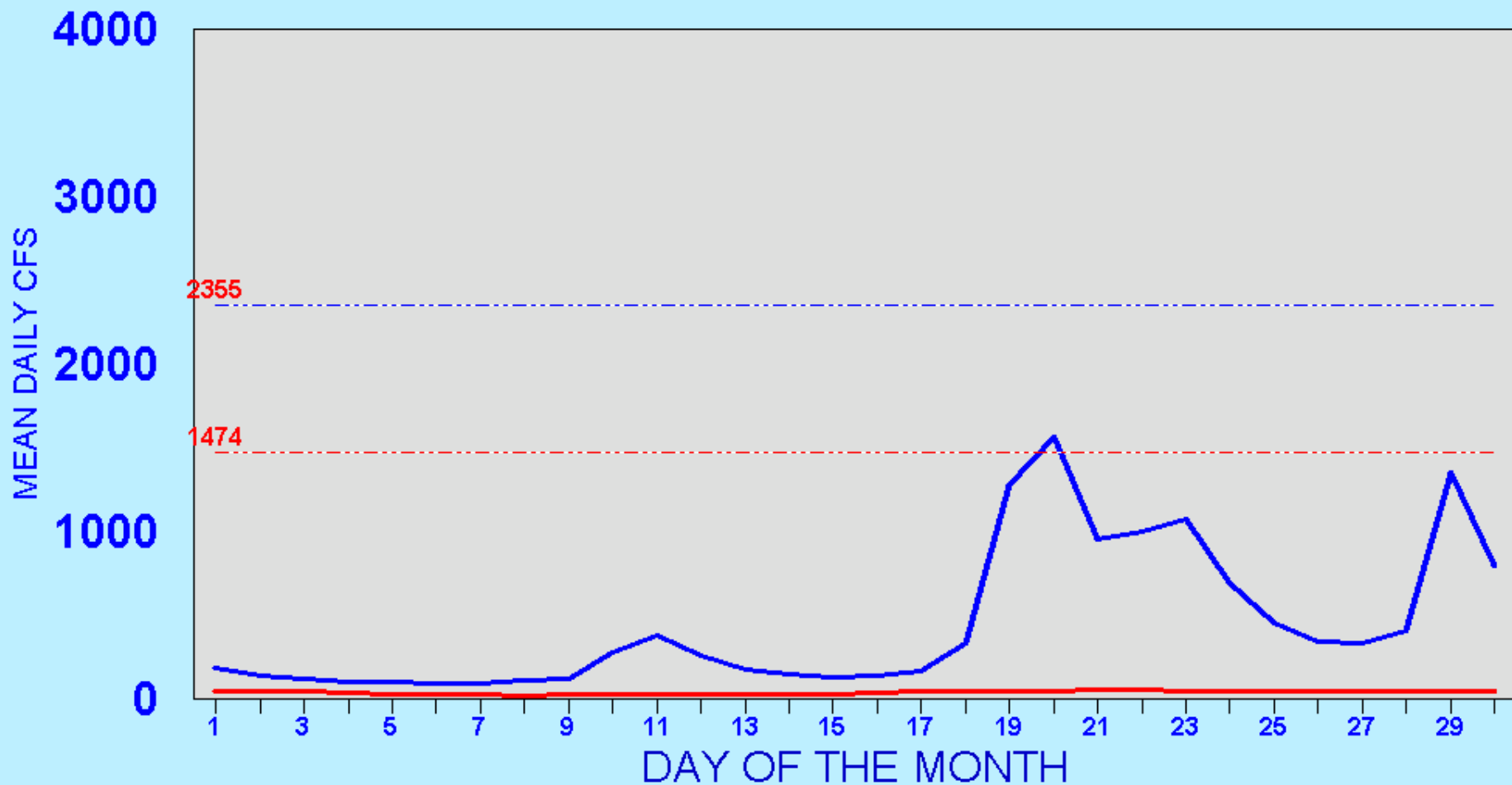


* 1901-2003
1902-2002

SOUTH PLATTE RIVER JUNE 2003



SOUTH PLATTE RIVER JUNE 2004



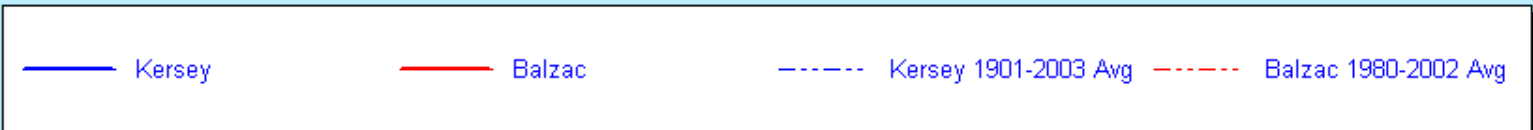
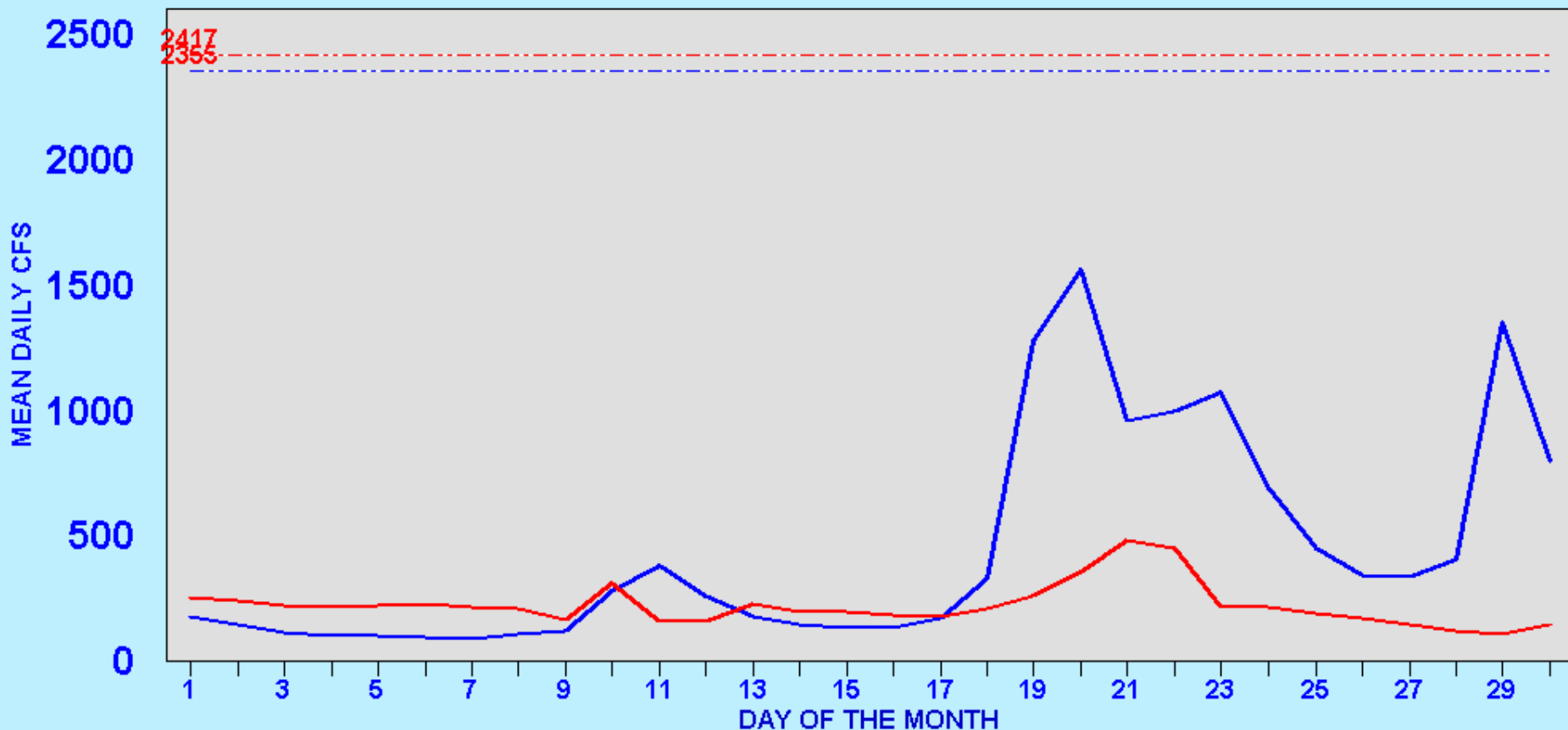
— Kersey

— Julesburg

----- Kersey 1901-2003 Avg.

----- Julesburg 1902-2003 Avg.

Kersey, Balzac JUNE 2004



South Platte River Monthly Means, Historic, Max,

South Platte River at Kersey

South Platte River at Julesburg

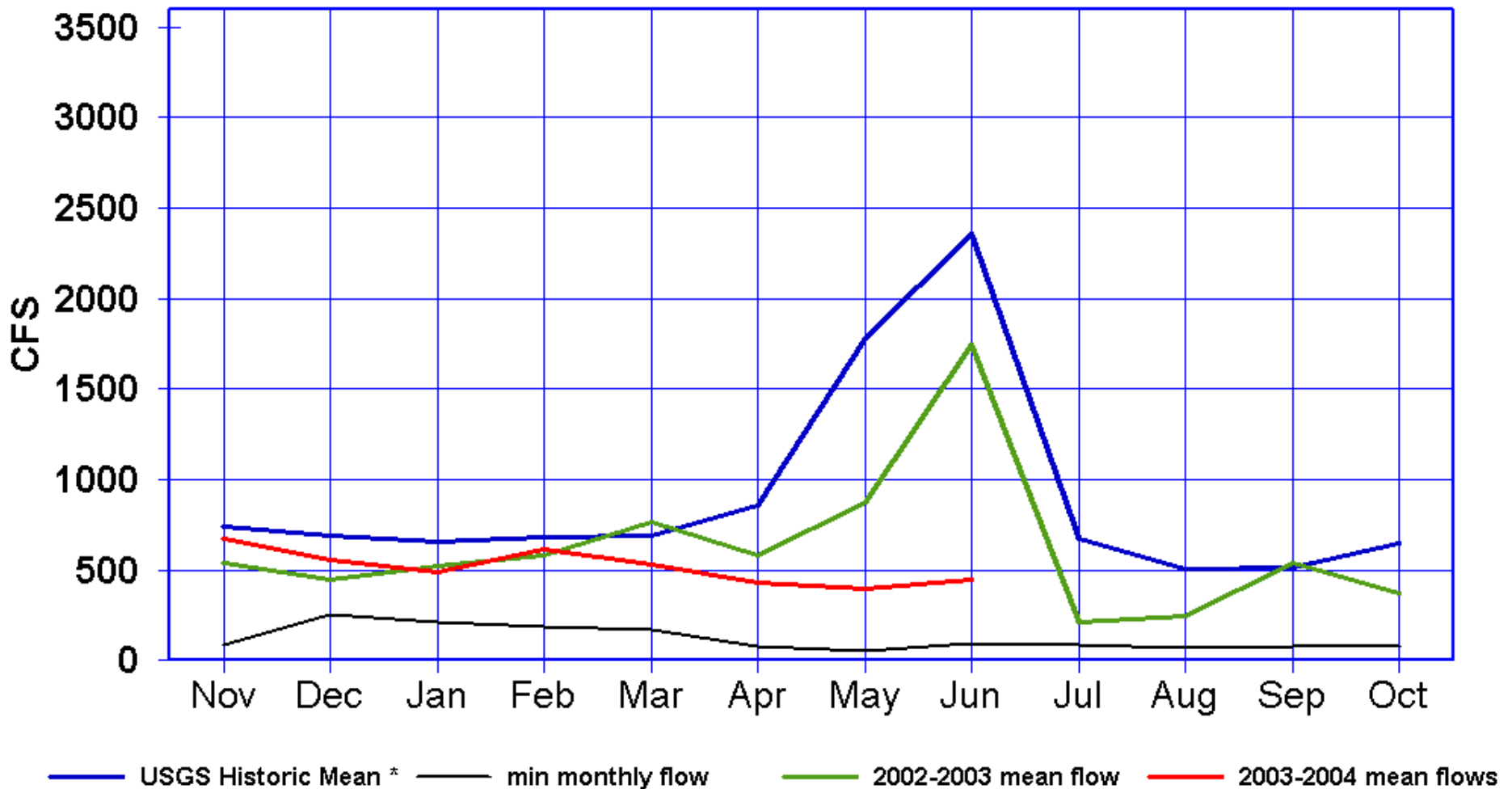
	USGS Historic Mean *	Historic Max flow *	Year	Historic Min flow *	Year	IY 2004 mean monthly flow	Estimated Mean		USGS Historic Mean *	Historic Max flow *	Year	Historic Min flow *	Year	IY 2004 mean monthly flow	Estimated Mean
Nov	737	2585	1985	87	1935	671		Nov	353	2358	1985	15.4	2003	19	
Dec	685	1375	1962	251	1935	557		Dec	415	1371	1985	18.8	1912	19	*
Jan	658	1434	1984	209	1935	485		Jan	530	1571	1998	49.6	2003	63	*
Feb	680	1861	1914	182	1935	615		Feb	610	1864	1930	49.4	2003	54	*
Mar	688	1852	1983	170	1935	528		Mar	550	2200	1939	44.9	2003	19	
Apr	853	5091	1942	82	1935	432		Apr	545	2808	1983	17.3	1904	27	
May	1780	13065	1980	52	1963	399		May	1054	9922	1980	24.1	1911	34	
Jun	2355	14517	1983	95	1940	444		Jun	1474	12200	1983	8.33	1910	39	
Jul	671	5784	1983	84	1963			Jul	303	5059	1983	2.15	1903		
Aug	505	2782	1984	68	1940			Aug	186	1882	1997	2.52	1902		
Sep	516	2769	1938	77	1954			Sep	247	1964	1984	5.6	1903		
Oct	651	3388	1985	82	1935			Oct	313	2427	1985	5.85	1904		

*Period of record 1901-2003

*Period of record 1902-2003

South Platte River at Kersey

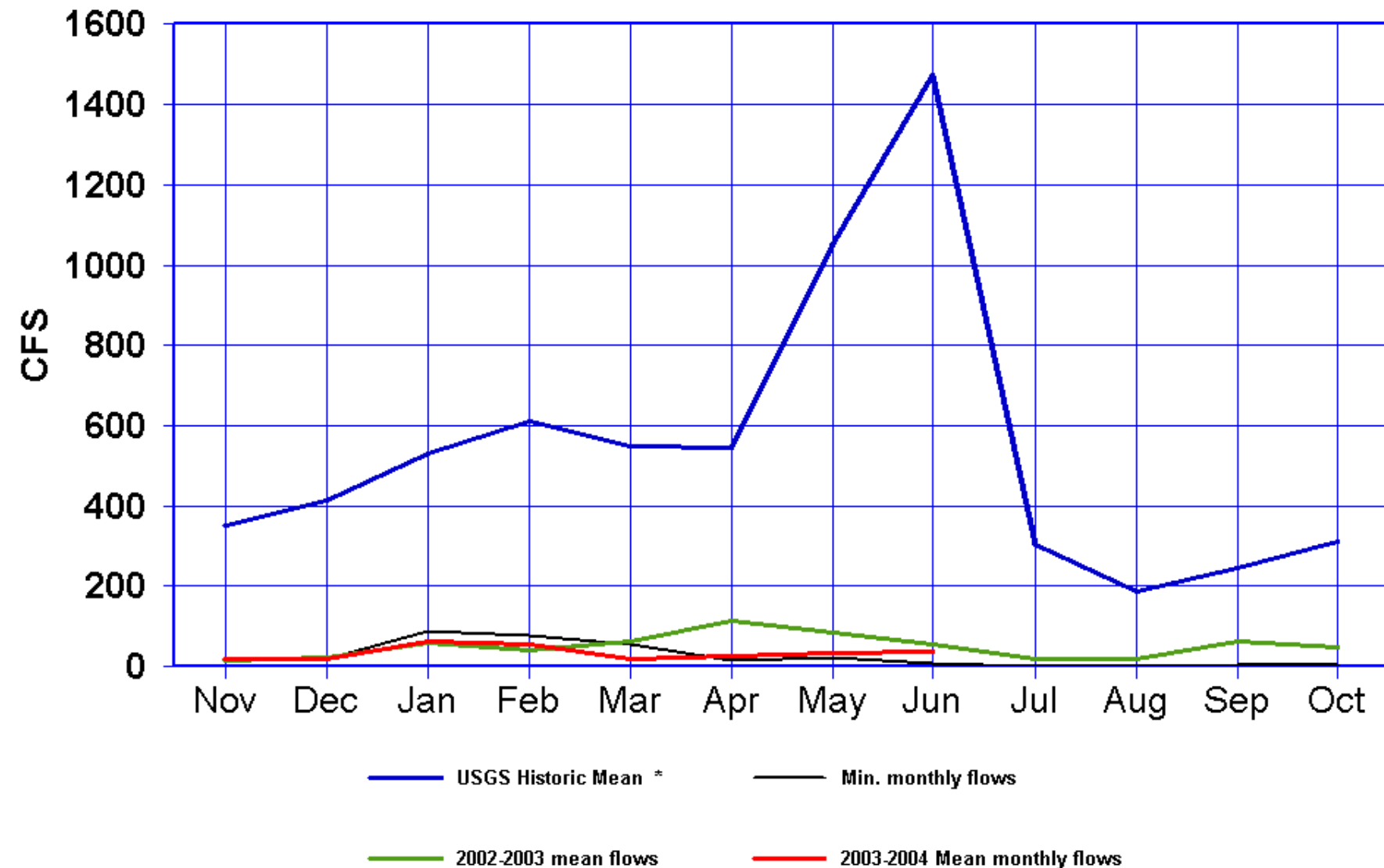
Irrigation Water Year*



*1901-2003

South Platte River at Julesburg

Irrigation Water Year*



*1901-2003

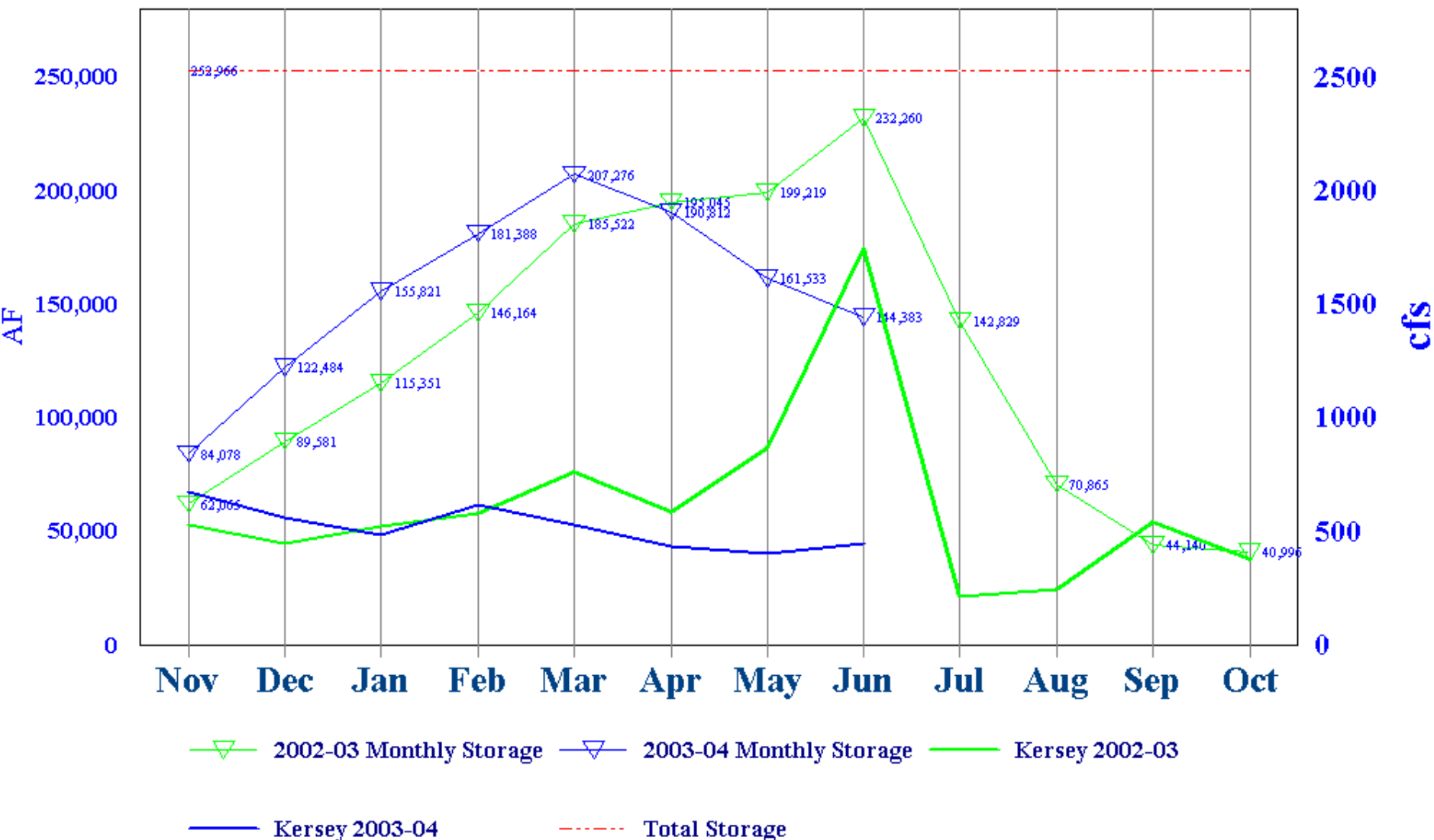
Next 4 slides show Reservoir storage below and above Kersey



Red Rocks Park

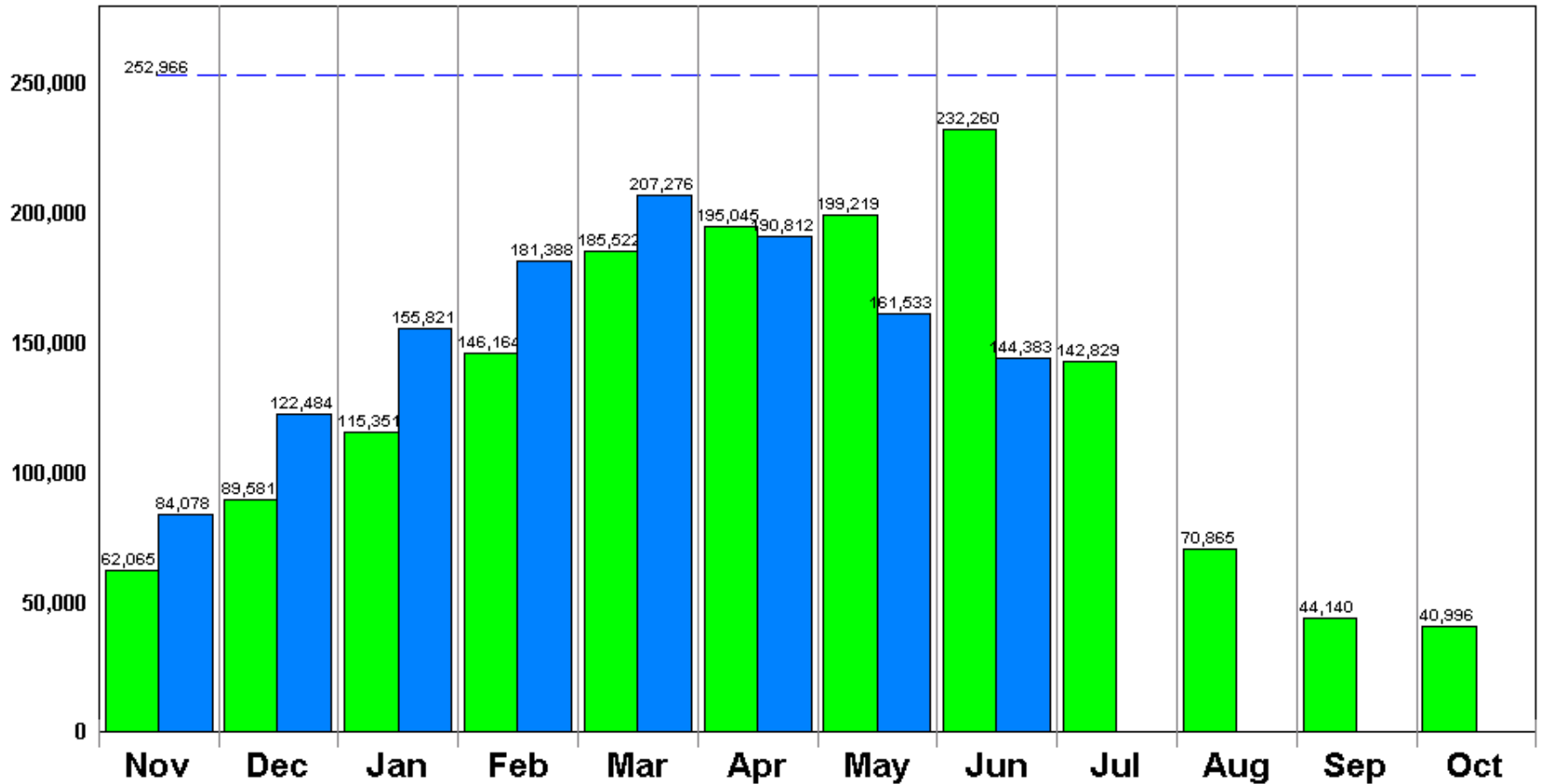
Reservoir Storage below Kersey

Selected Reservoirs*



*Empire, Riverside, Jackson, Prewitt, N. Sterling, Julesburg. by jhl

South Platte Reservoirs Storage below Kersey*



Total storage 2002-03



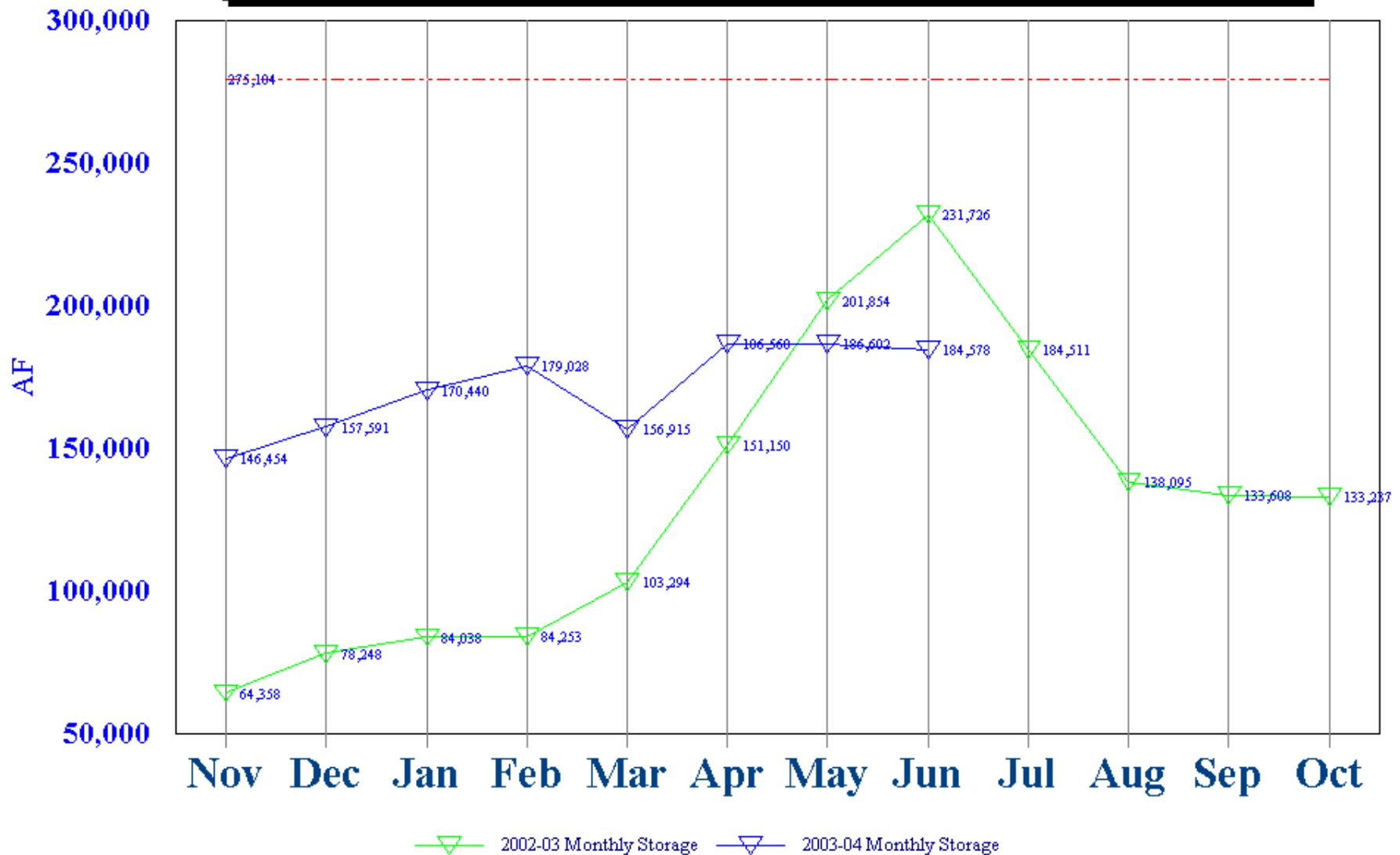
Total Storage 2003-04

— — Maximum Storage

*Empire, Riverside, Jackson, Prewitt, N. Sterling, Julesburg. by jhl

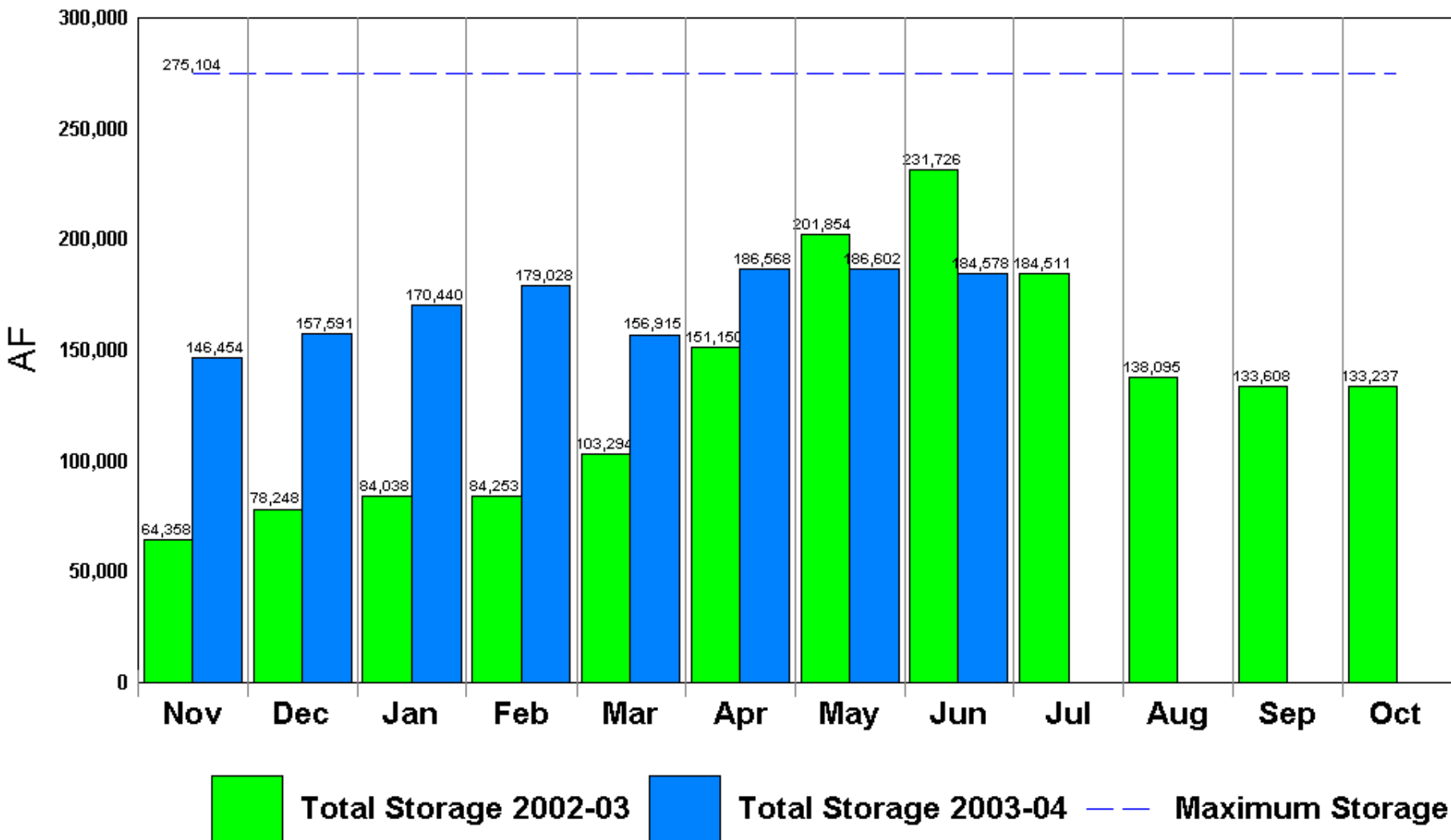
Reservoir Storage above Kersey

Selected Reservoirs*



*Barr,Cobb,FossilCrk,Halligan,Marshall,Milton,Union,Standley,LowerLatham,Boyd,Loveland,Windsor,HorseCrk,Prospect. by jhl

South Platte Reservoirs Storage above Kersey*



*Barr,Cobb,FossilCrk,Halligan,Marshall,Milton,Union,Standley,LowerLatham,Boyd,Loveland,Windsor,HorseCrk,Prospect. by jhl

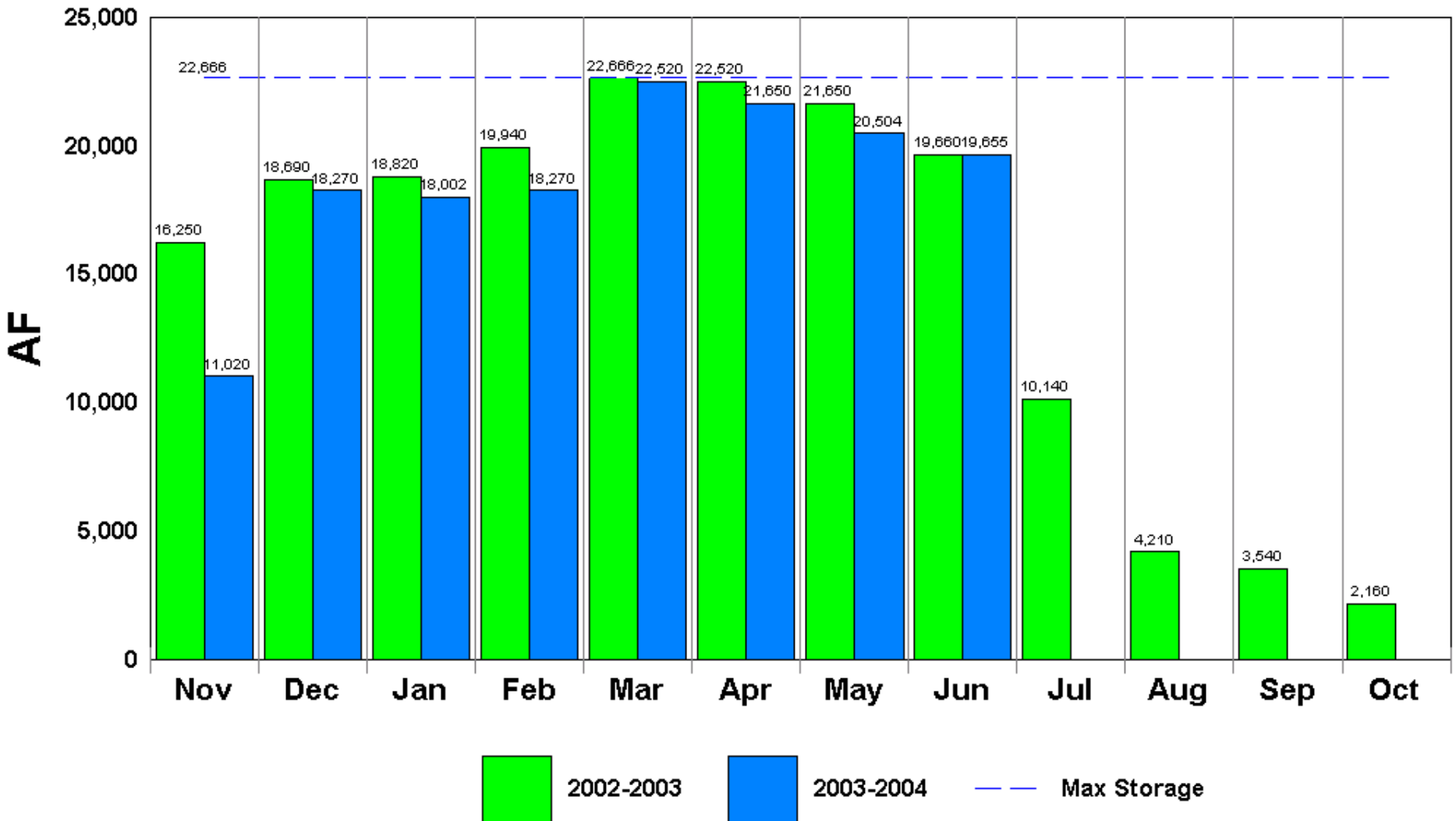
**Individual Reservoir Storage
follows:**



Prickly Pear Cactus

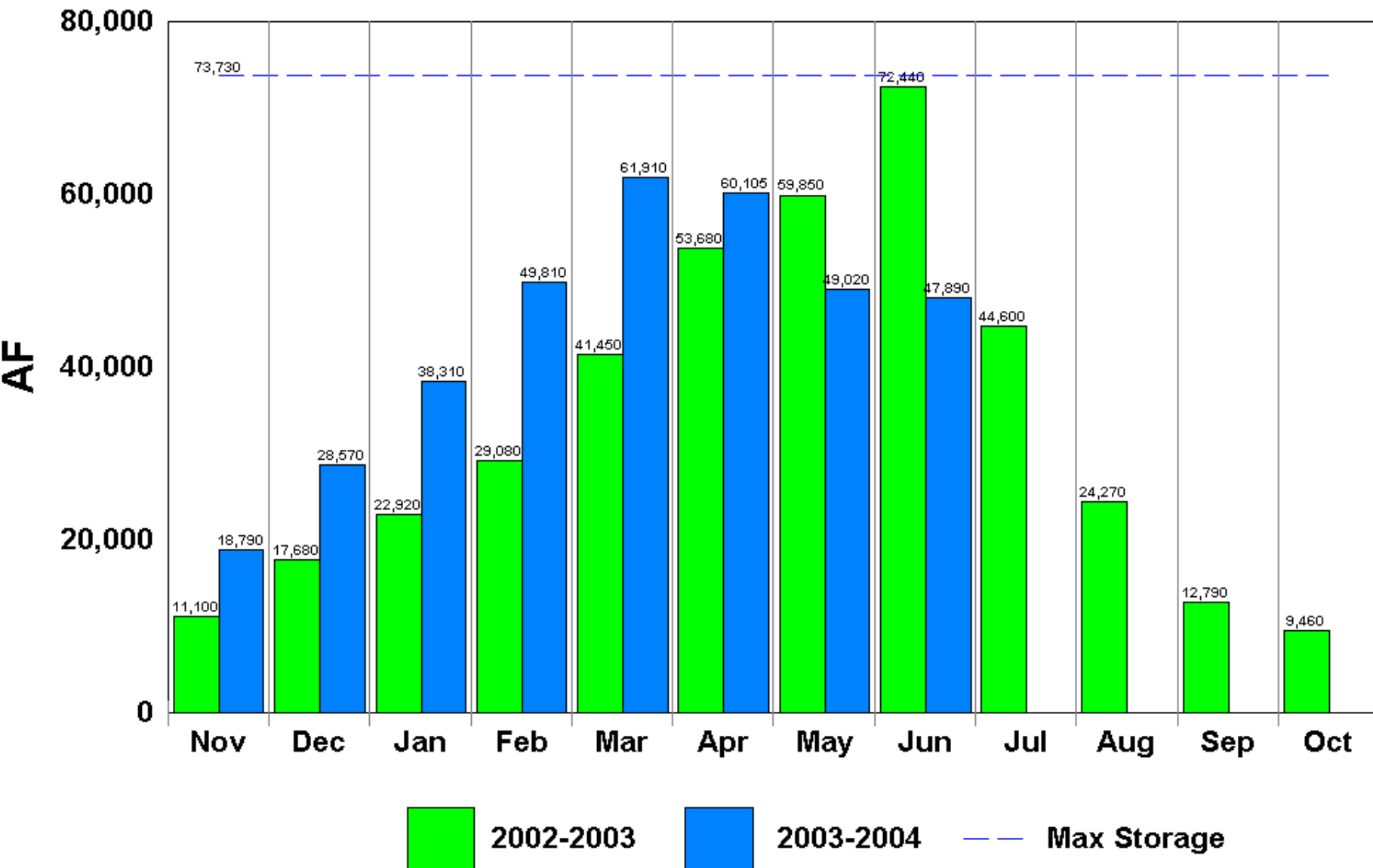
Julesburg Reservoir

(Agricultural)



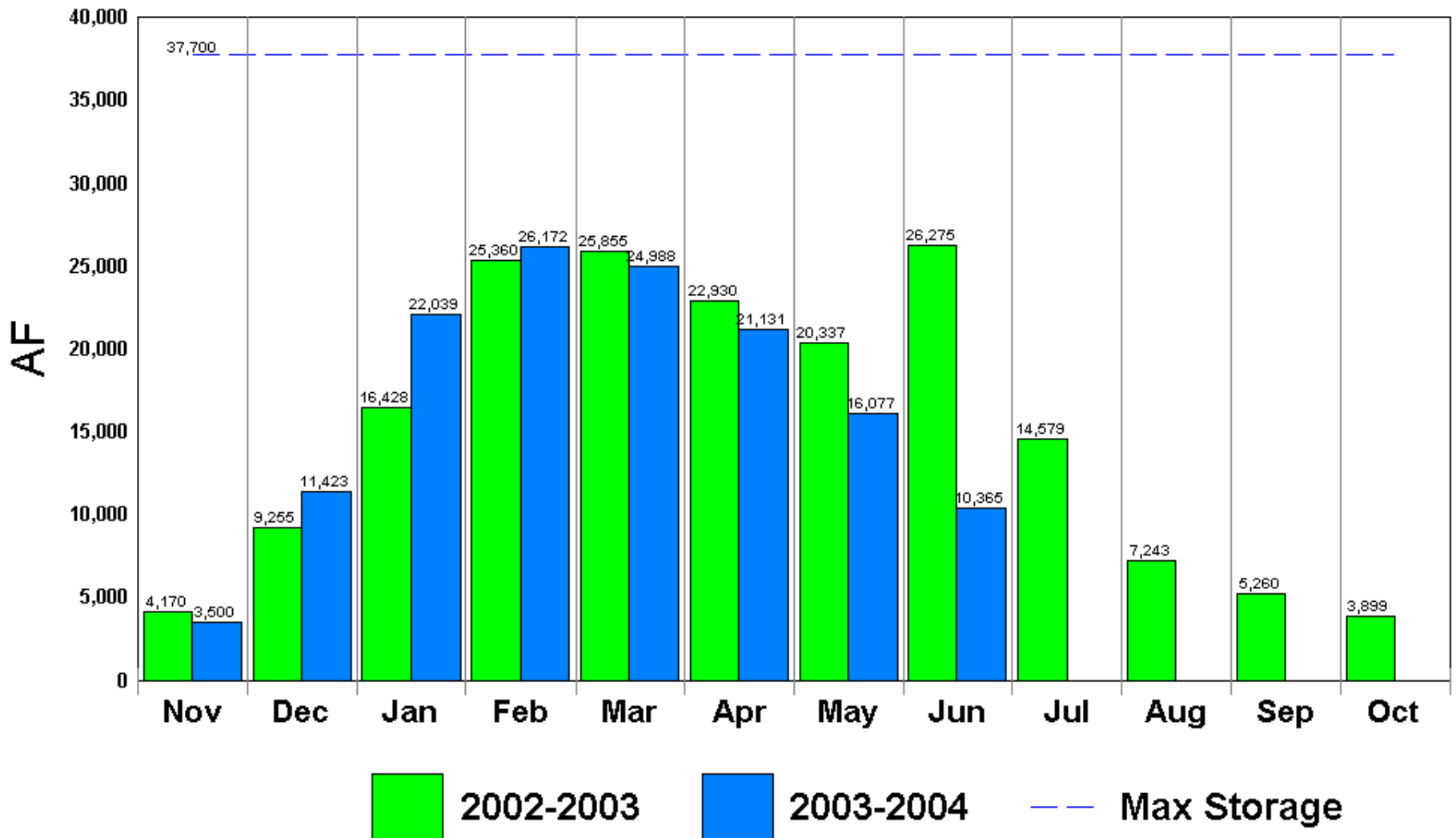
N. Sterling Reservoir

(Agricultural)



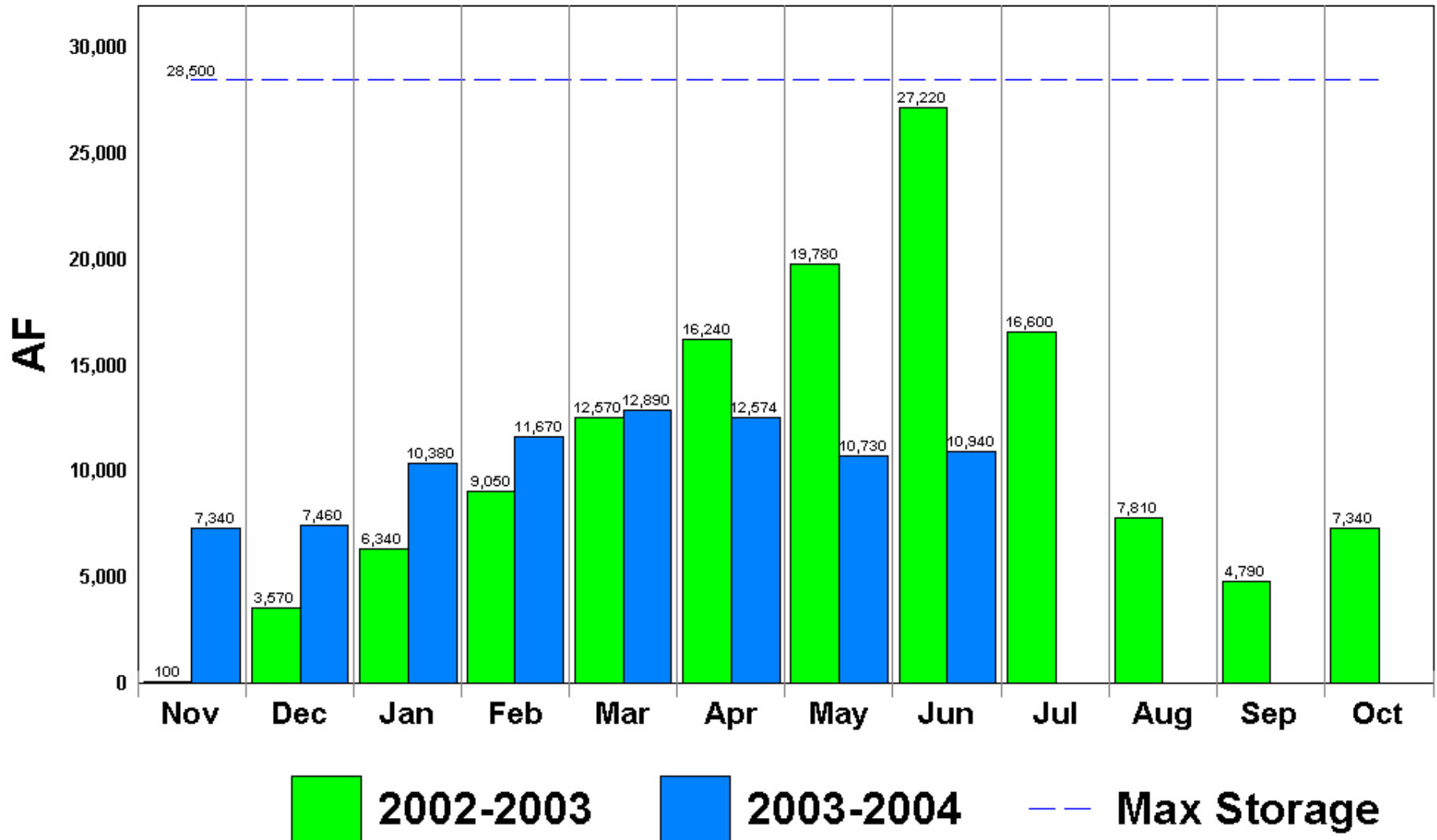
Empire Reservoir

(Agricultural)



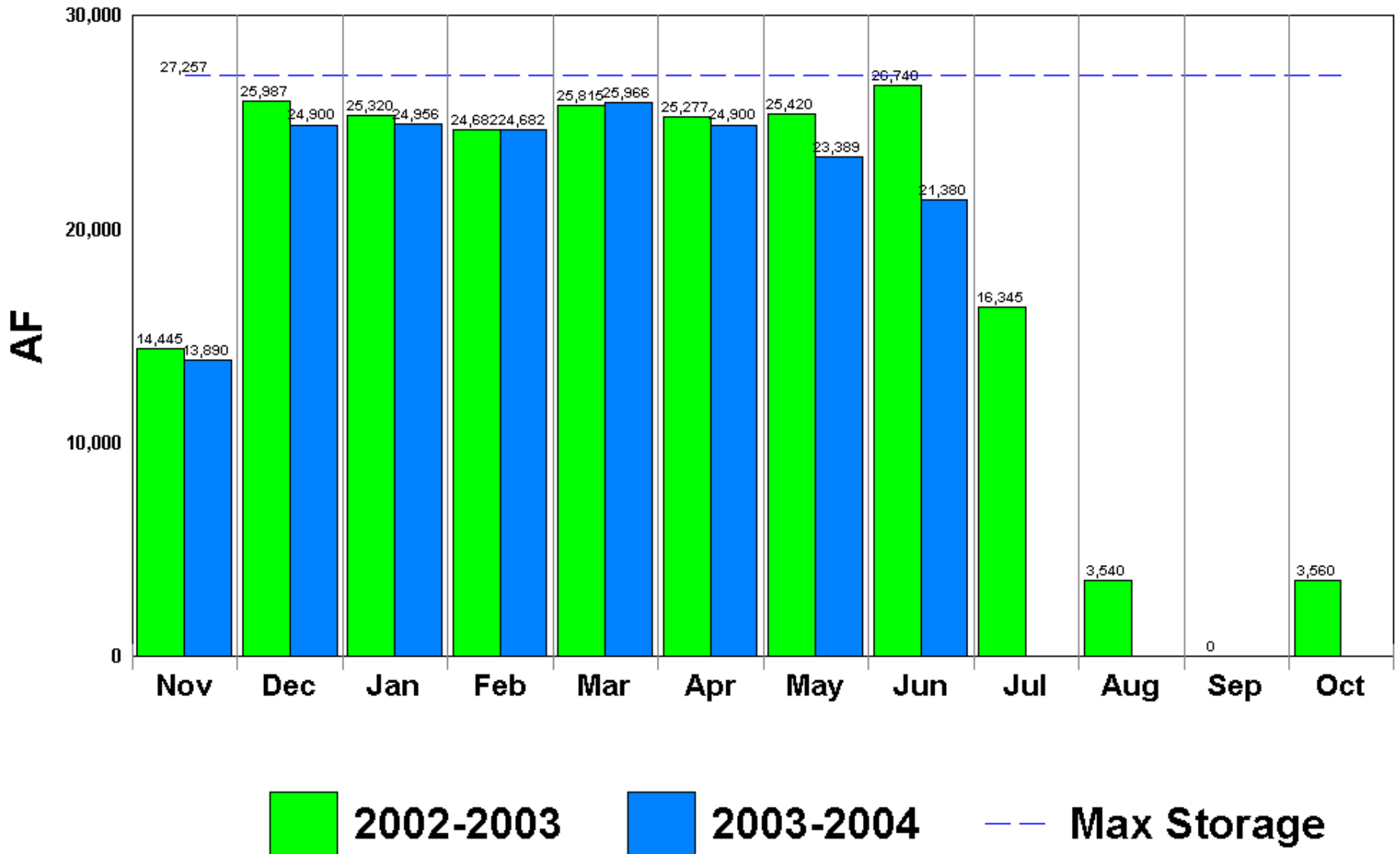
Prewitt Reservoir

(Agricultural)



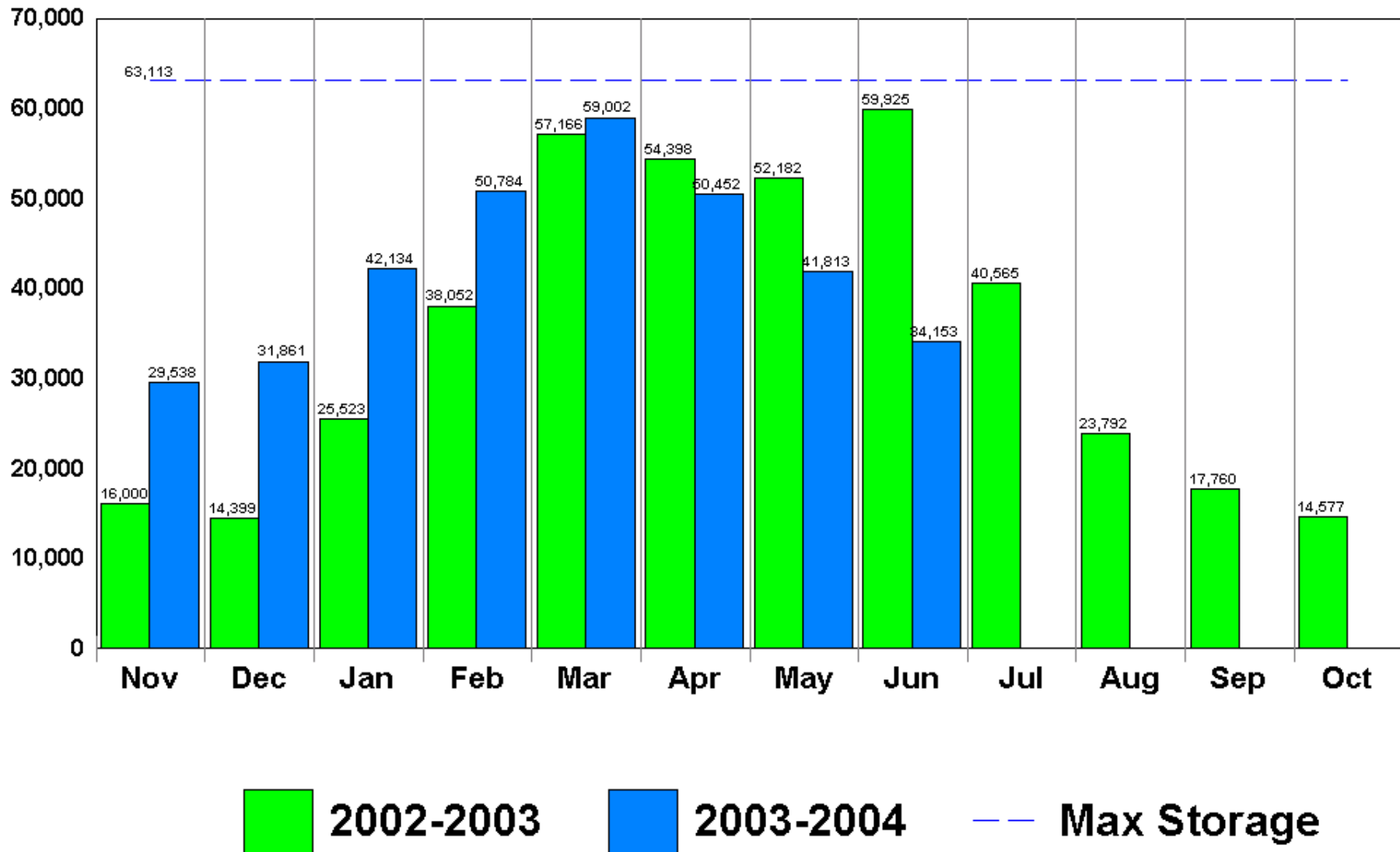
Jackson Reservoir

(Agricultural)



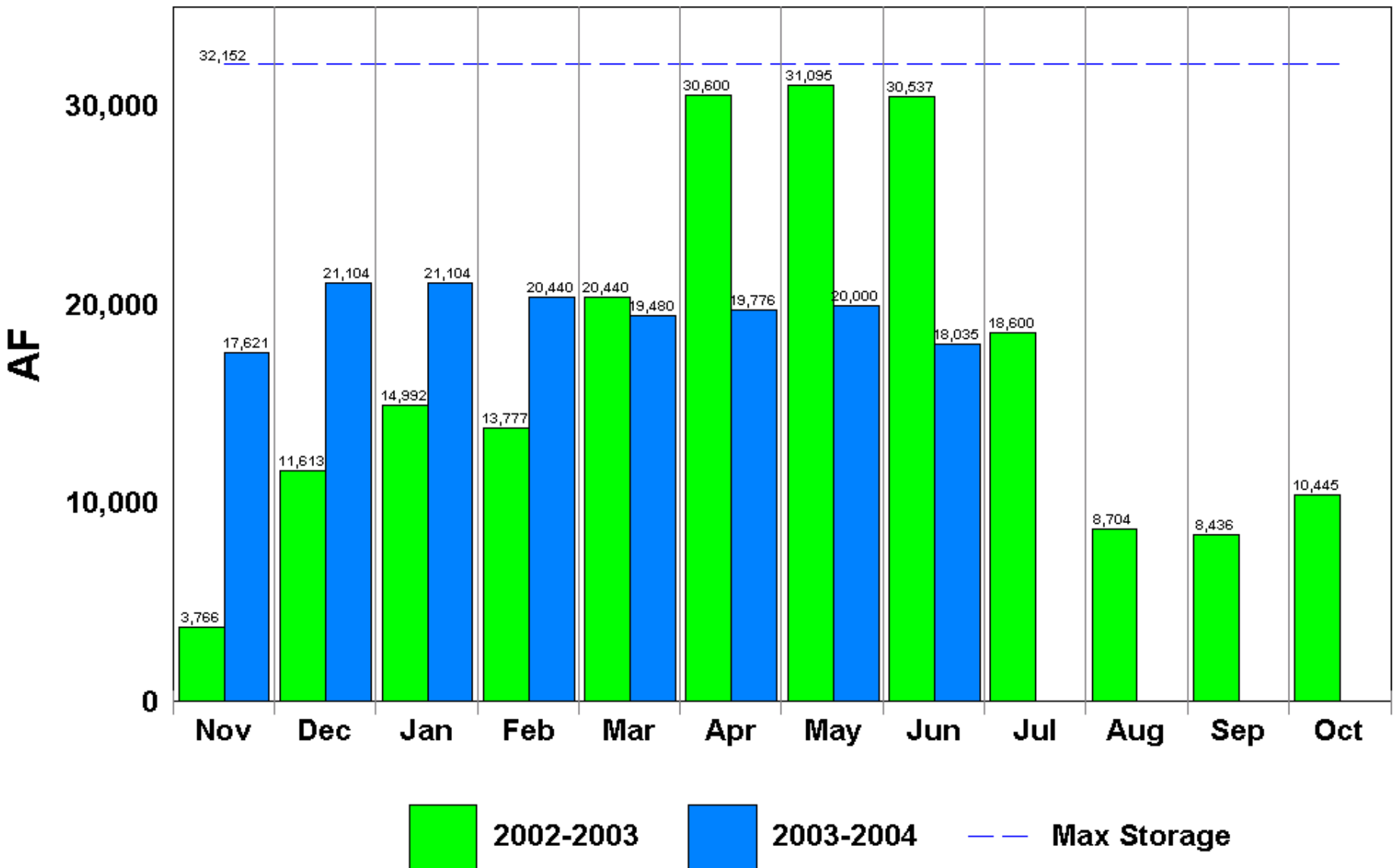
Riverside Reservoir

(Agricultural)



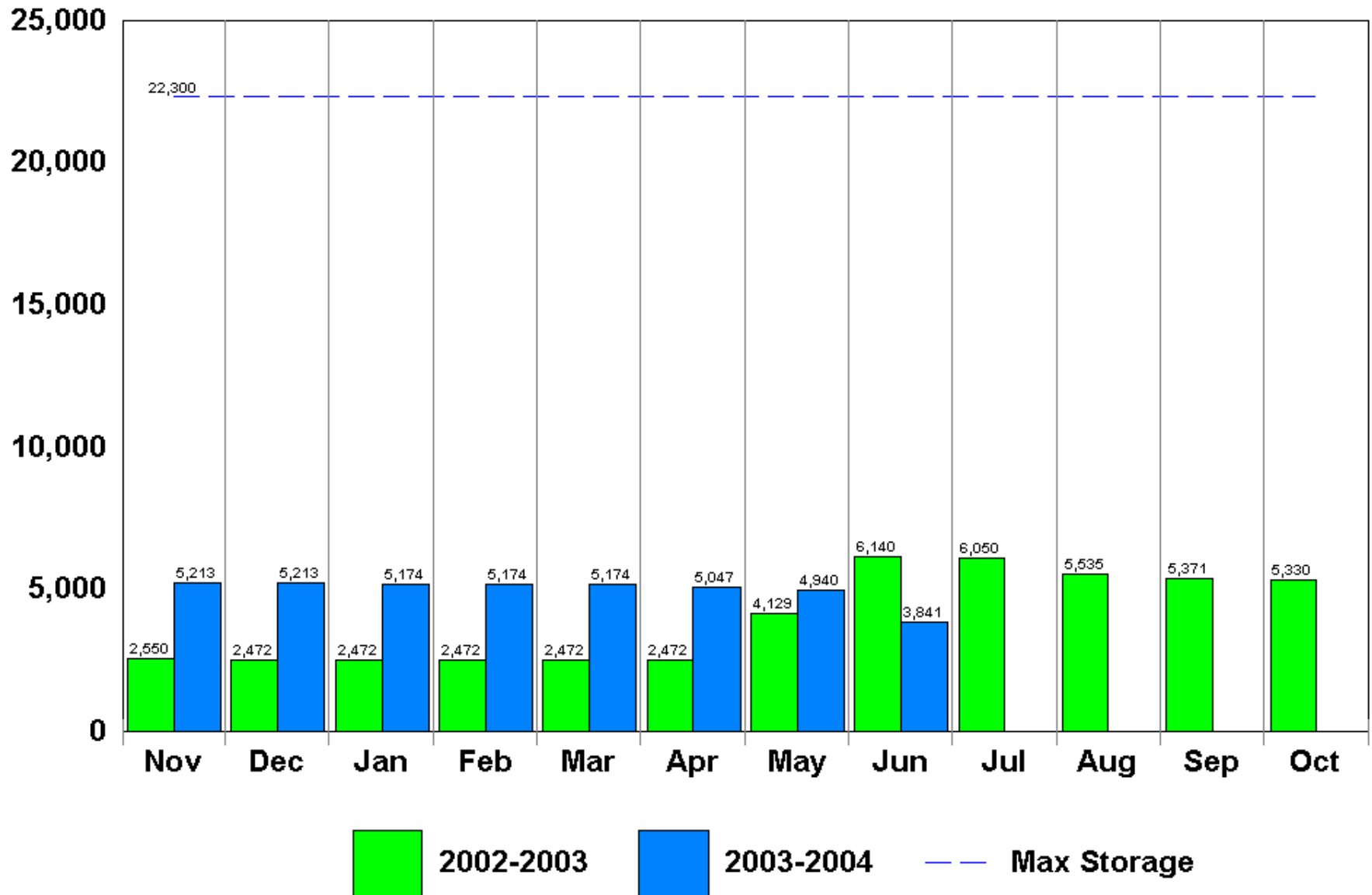
Barr Lake

(Agricultural)



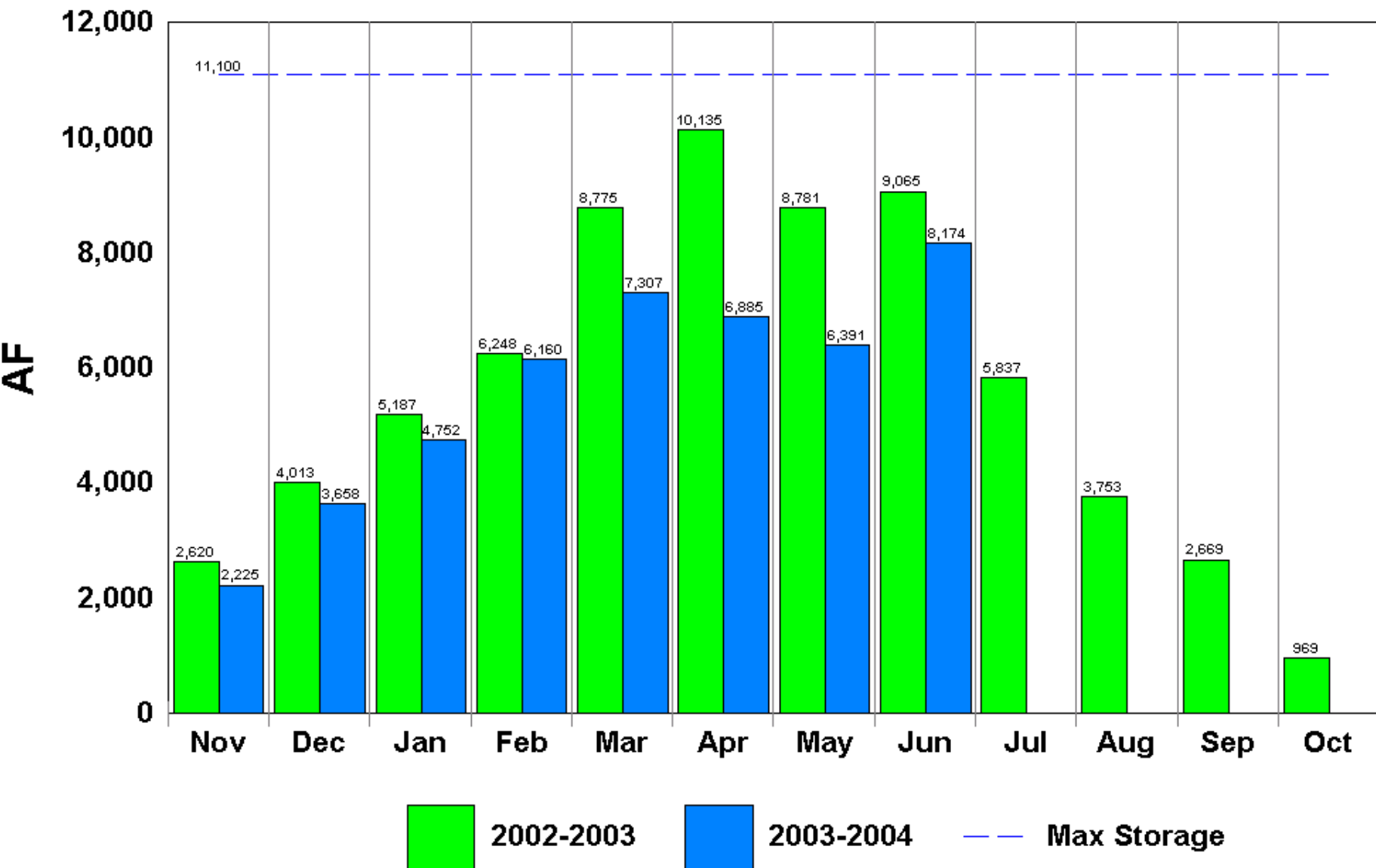
Cobb Lake

(Agricultural)



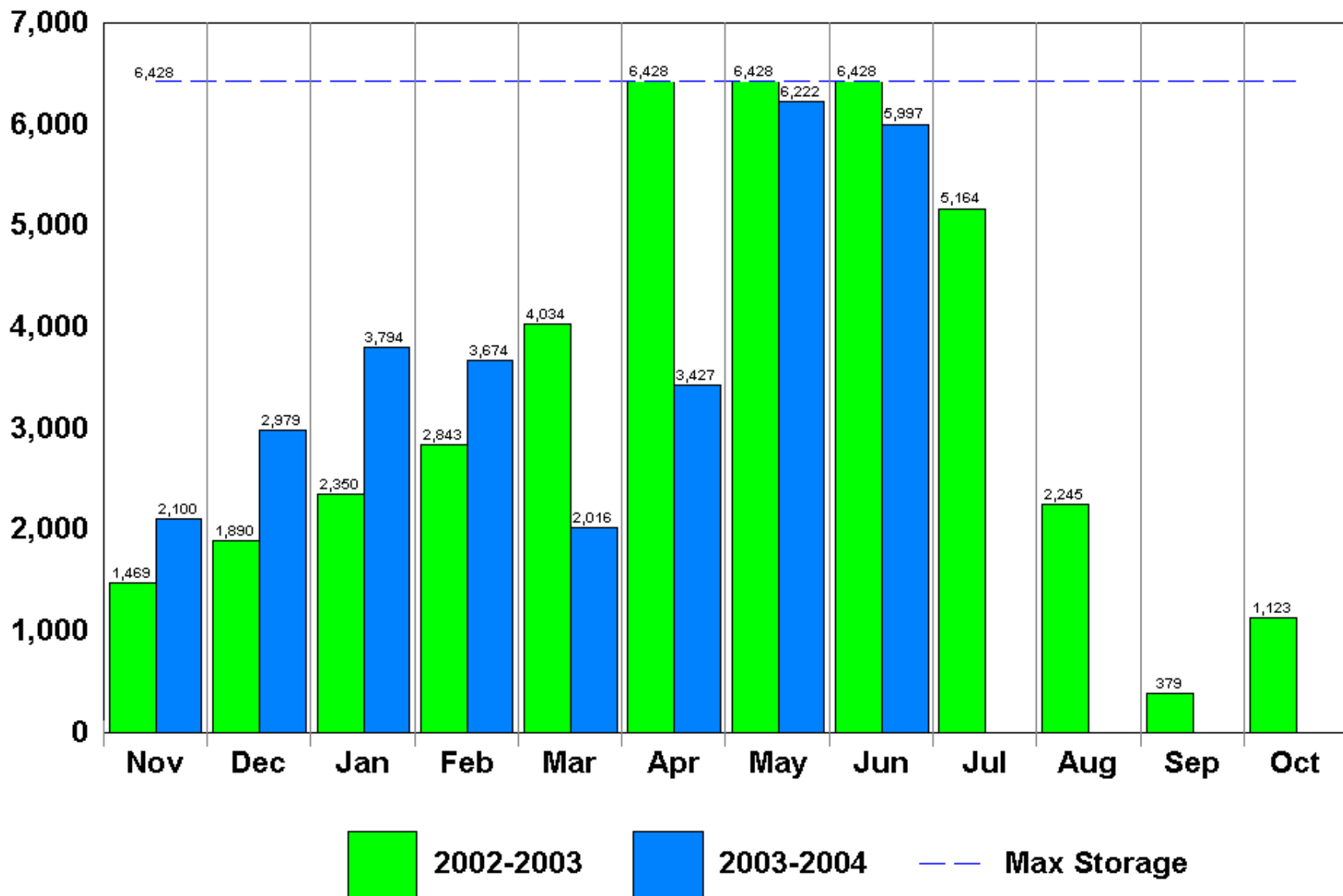
Fossil Creek Reservoir

(Agricultural)



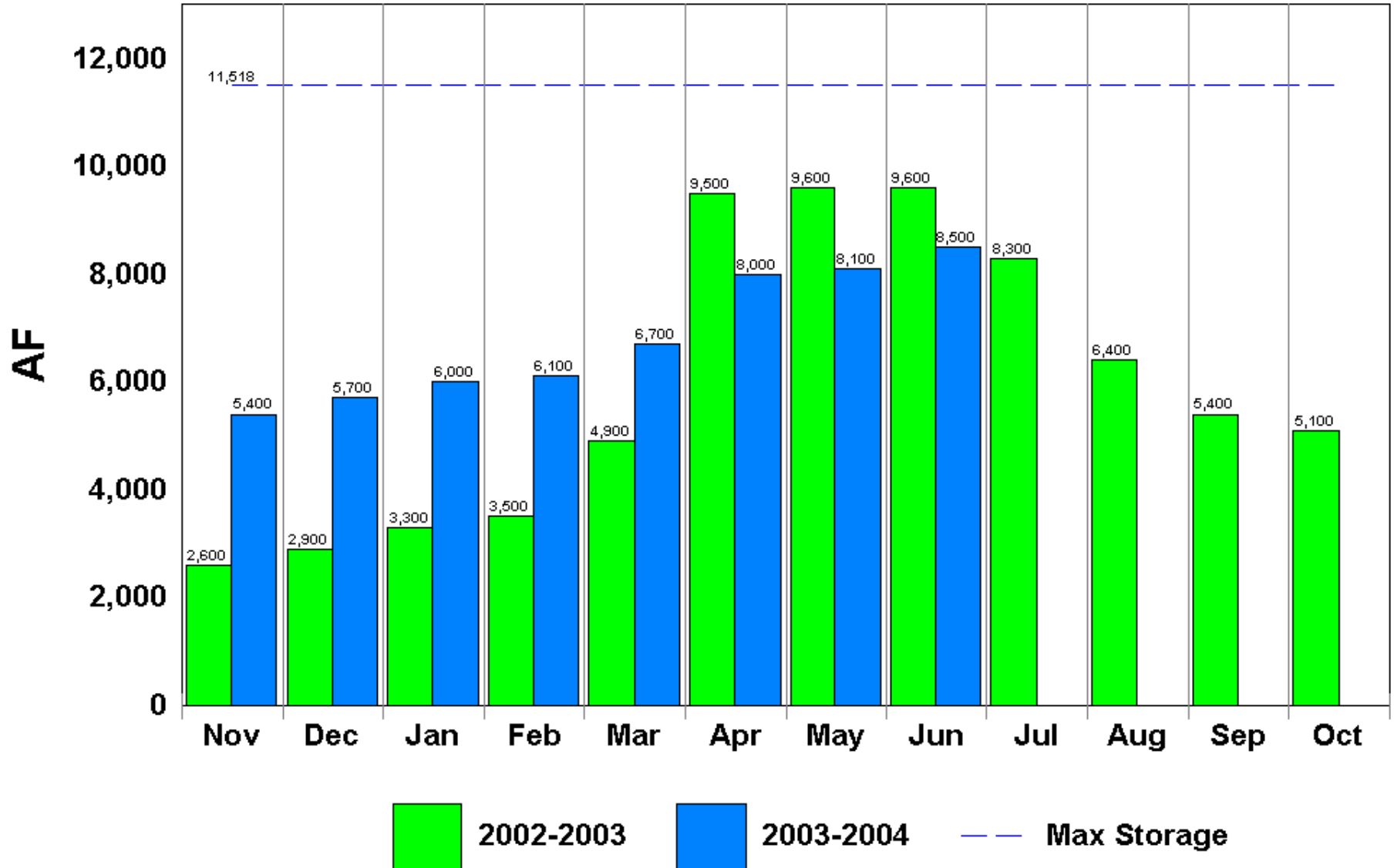
Halligan Reservoir

(Agricultural)



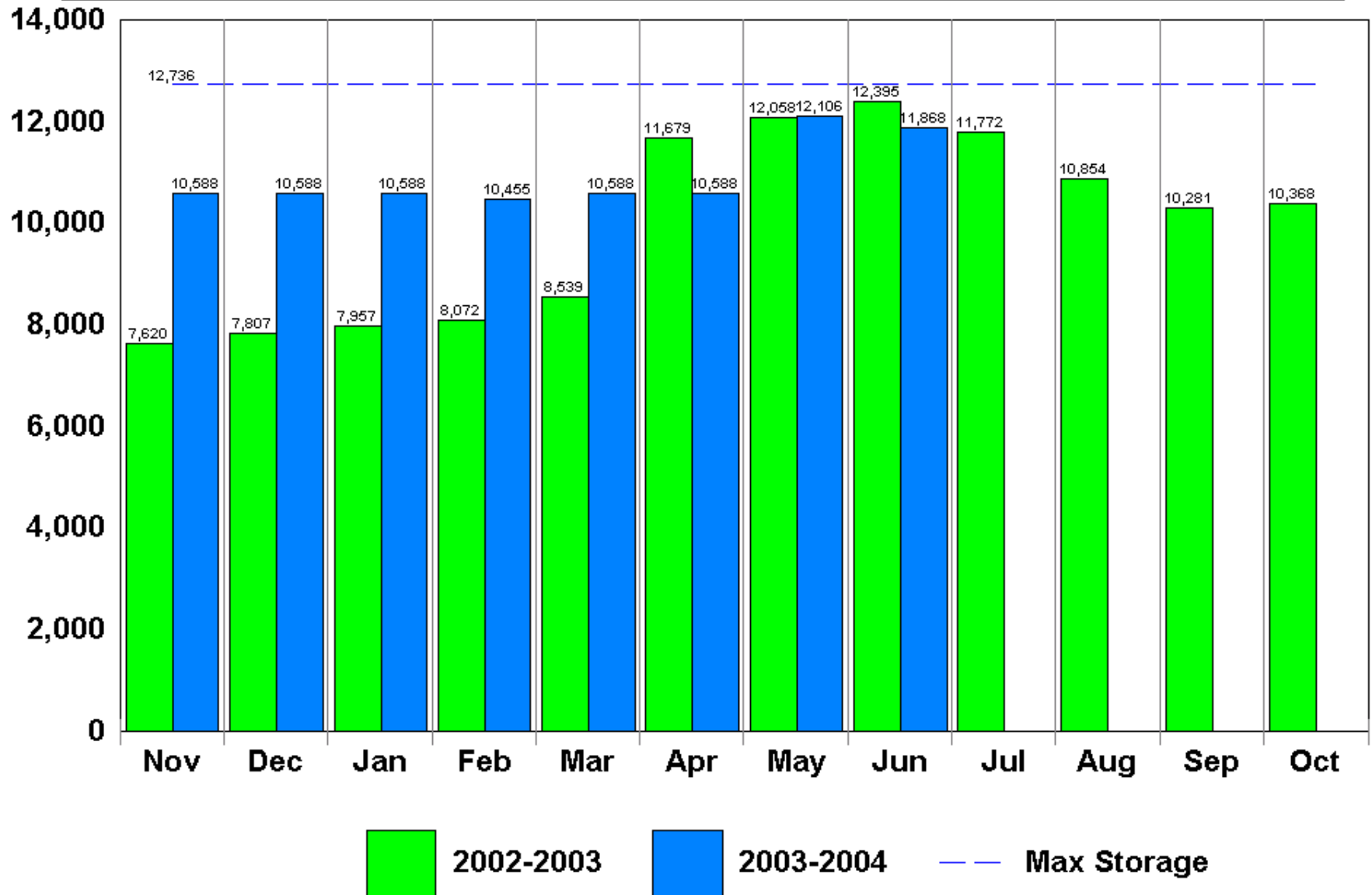
Marshall Lake

(Agricultural)



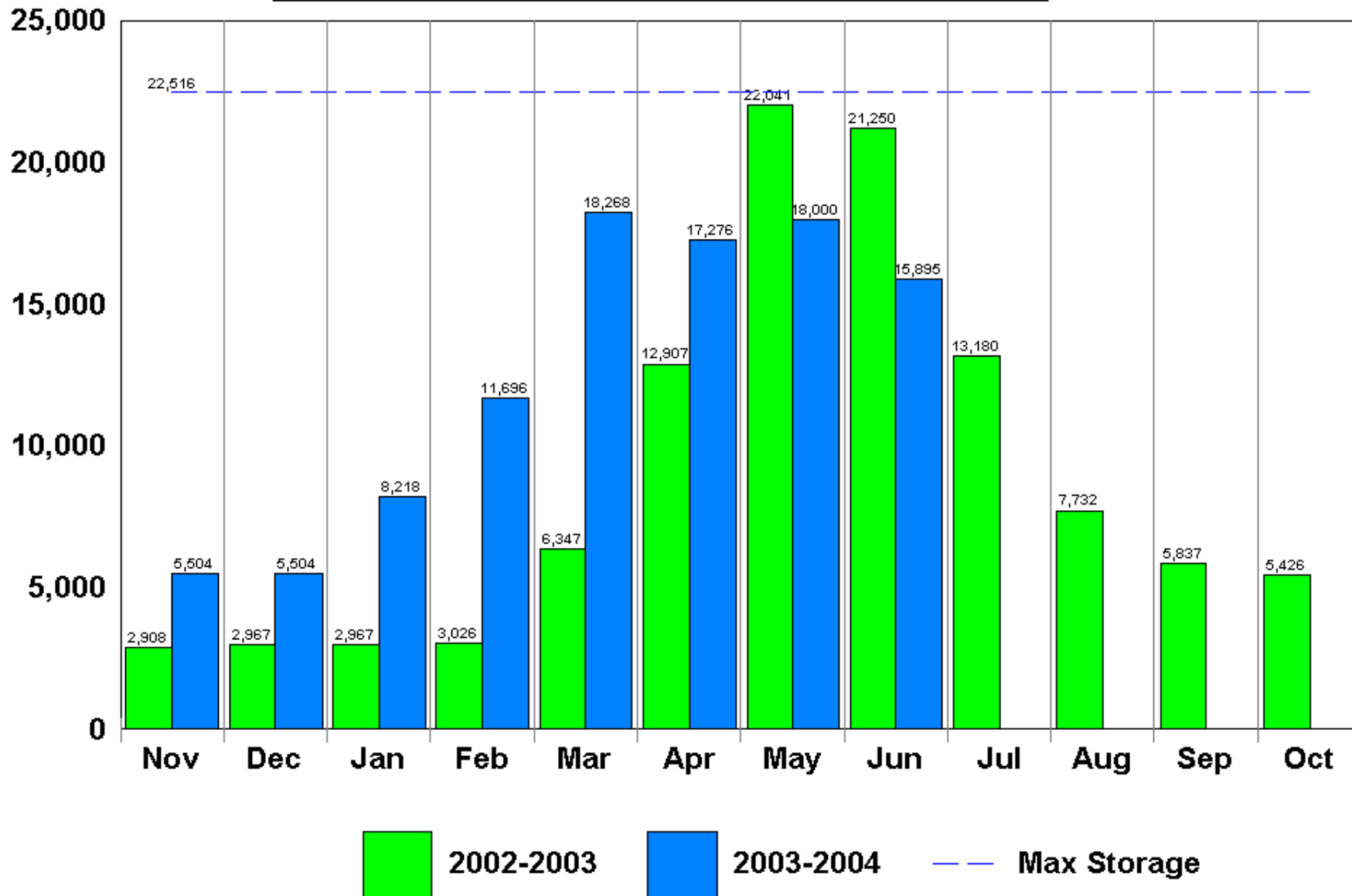
Loveland Greeley Reservoir

(Agricultural)



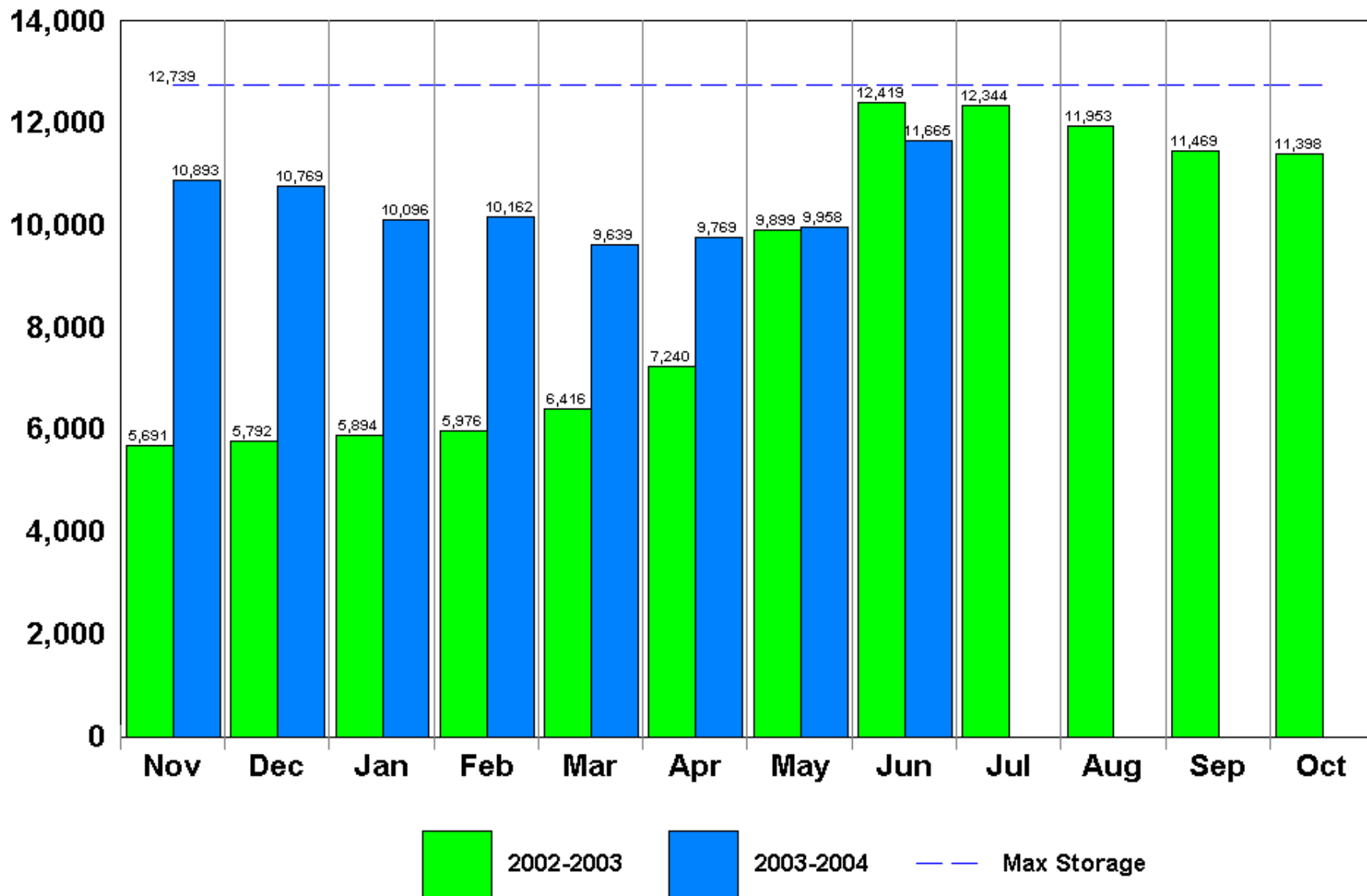
Milton Reservoir

(Agricultural)



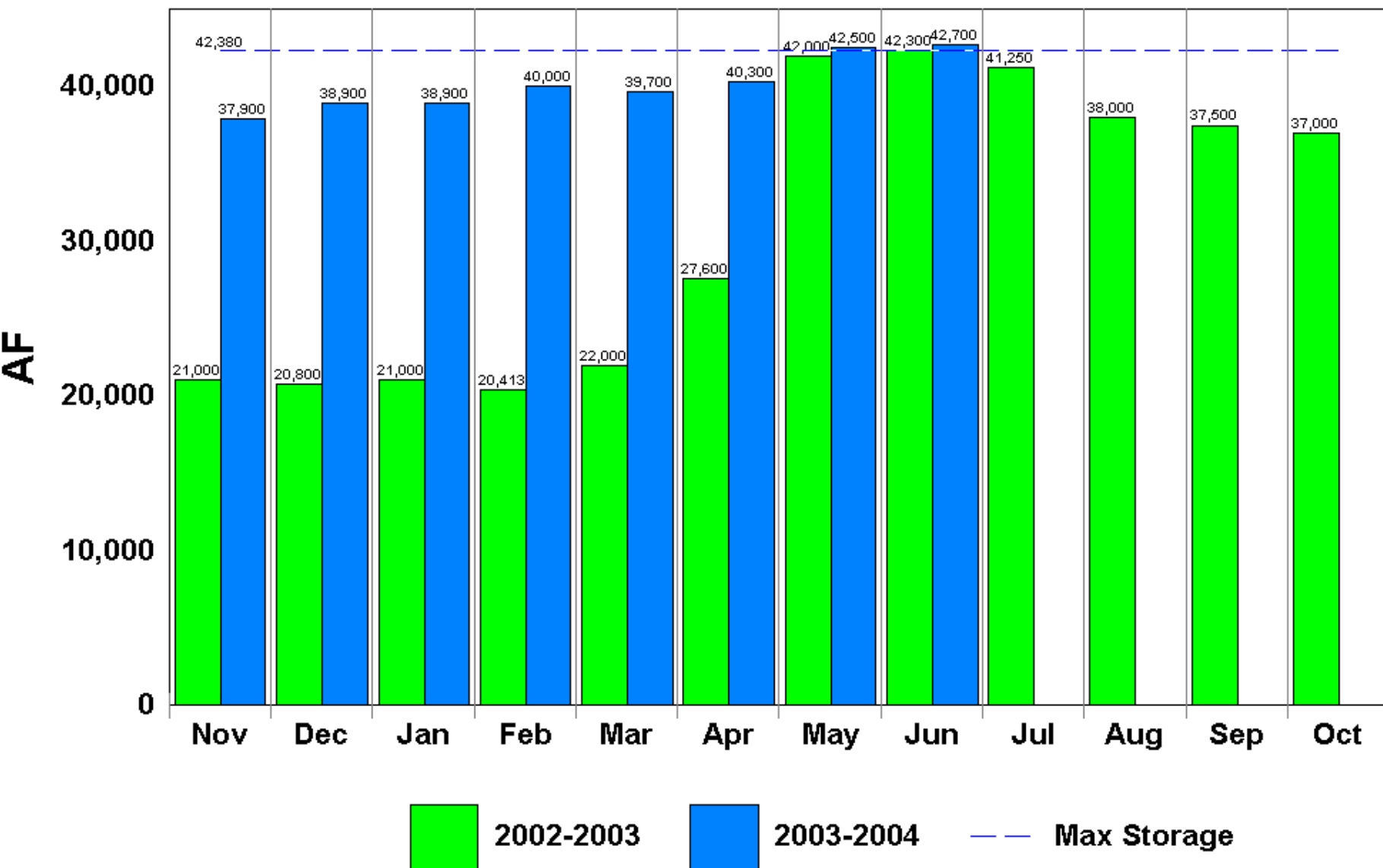
Union Reservoir

(Agricultural)



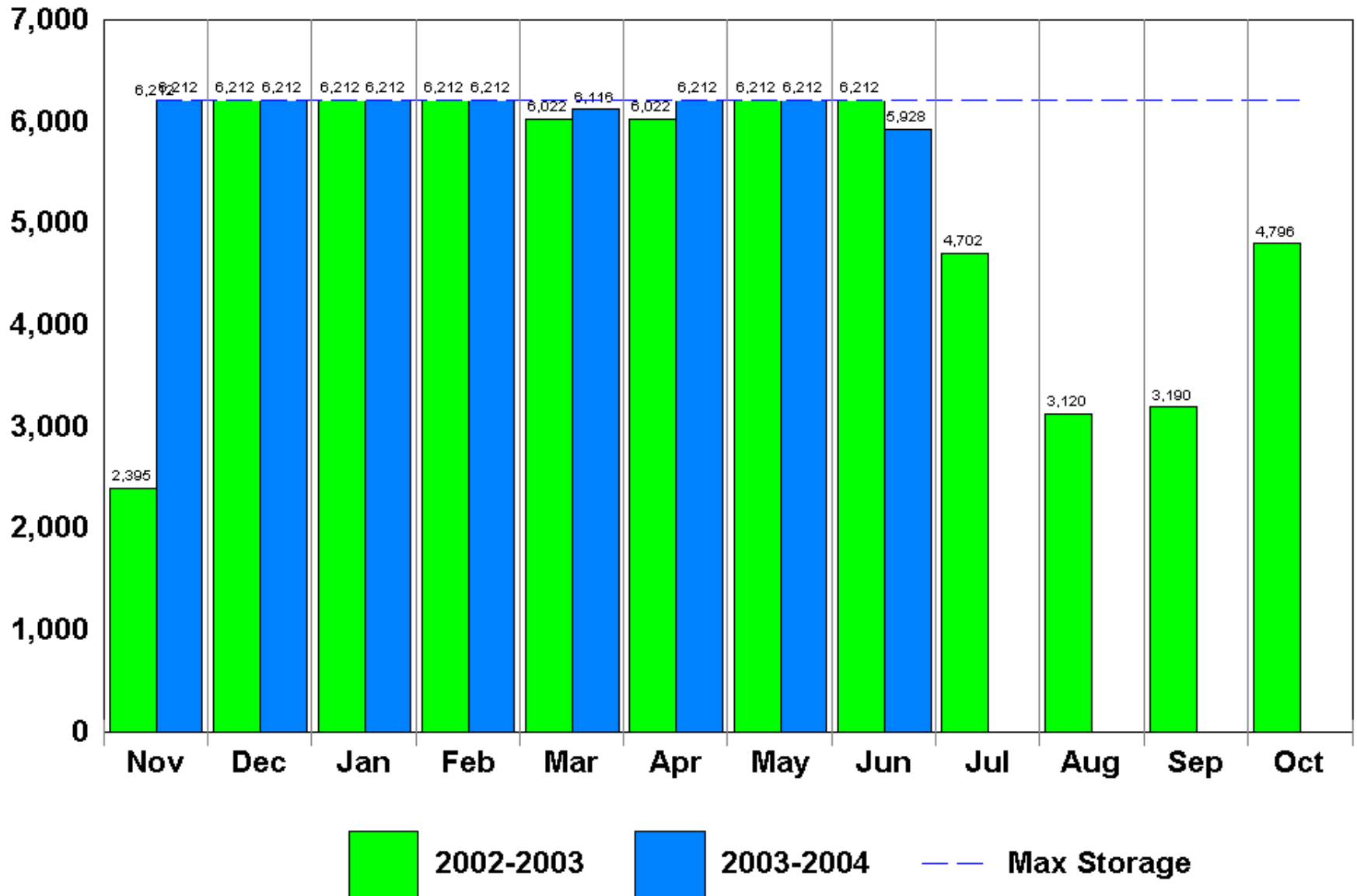
Standley Lake

(Agricultural)



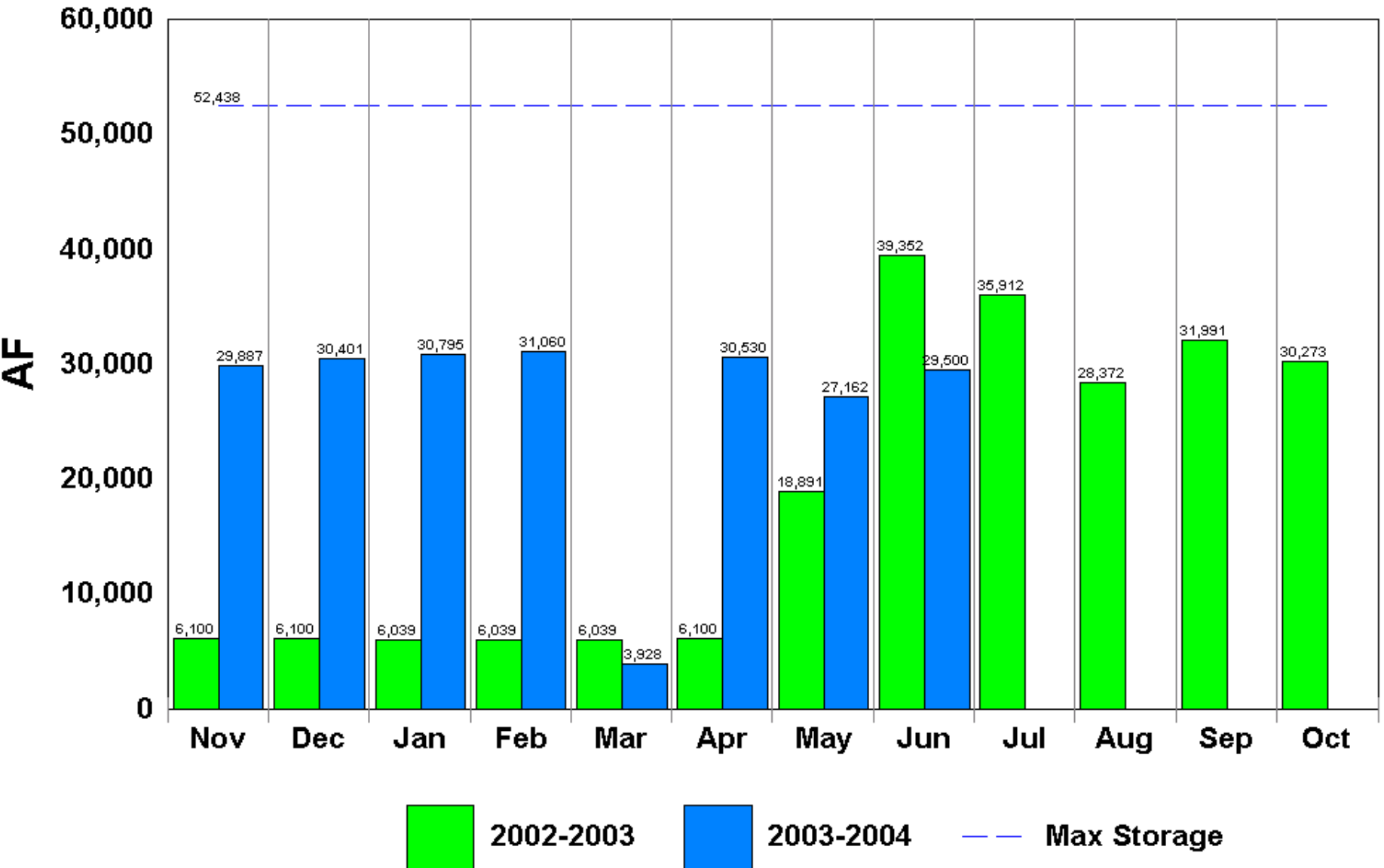
Lower Latham Reservoir

(Agricultural)



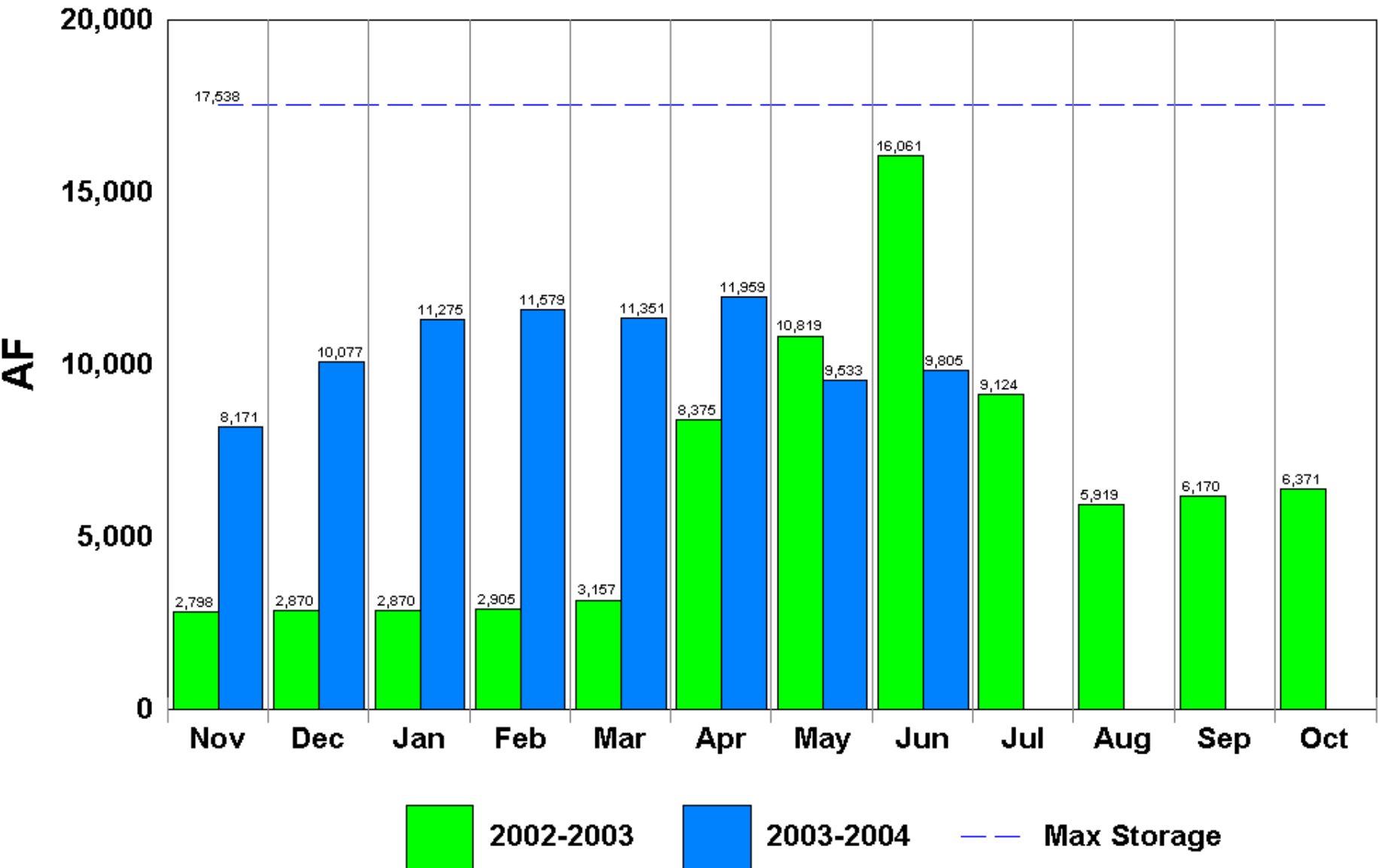
Boyd Lake

(Agricultural)



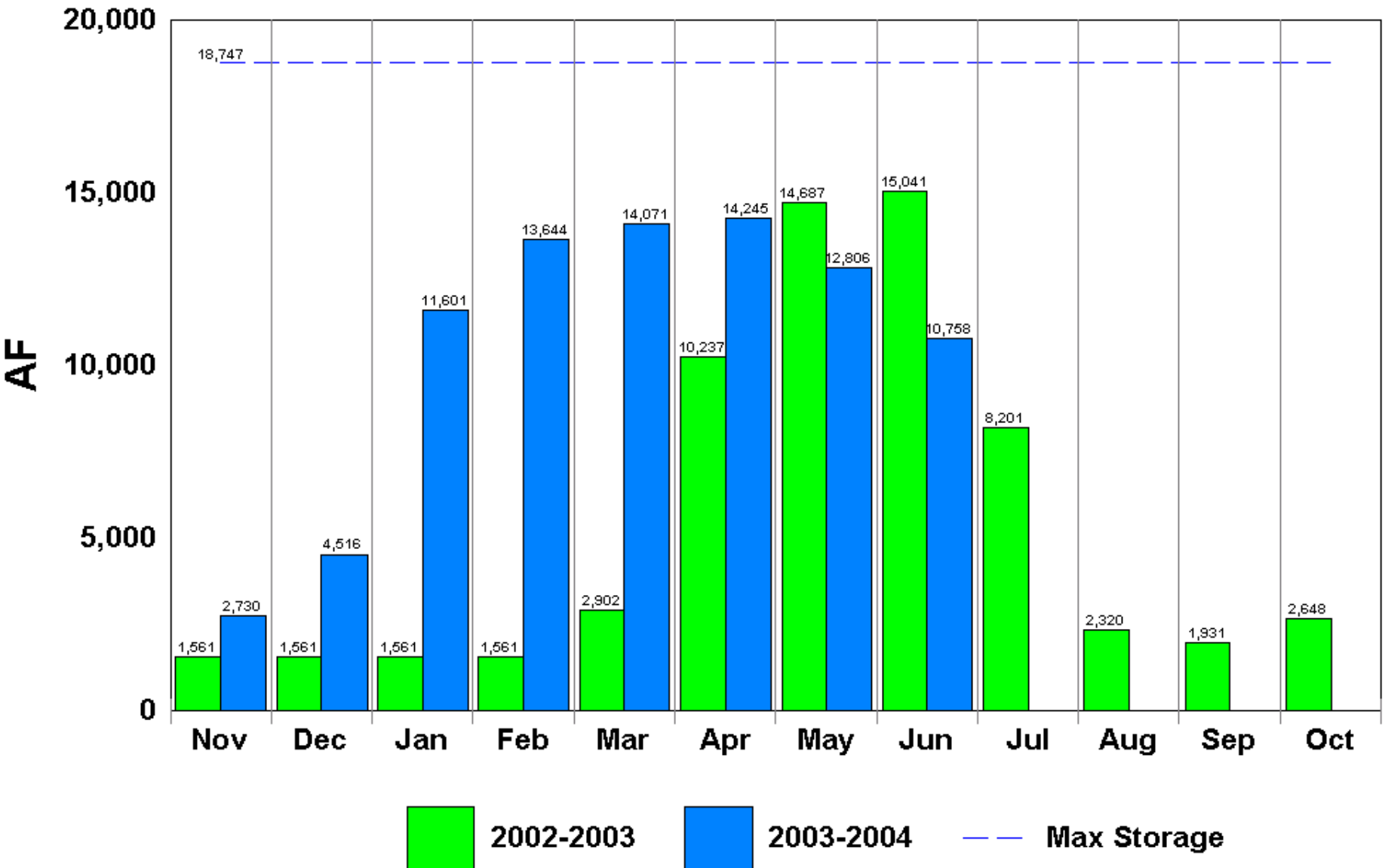
Windsor Reservoir

(Agricultural)



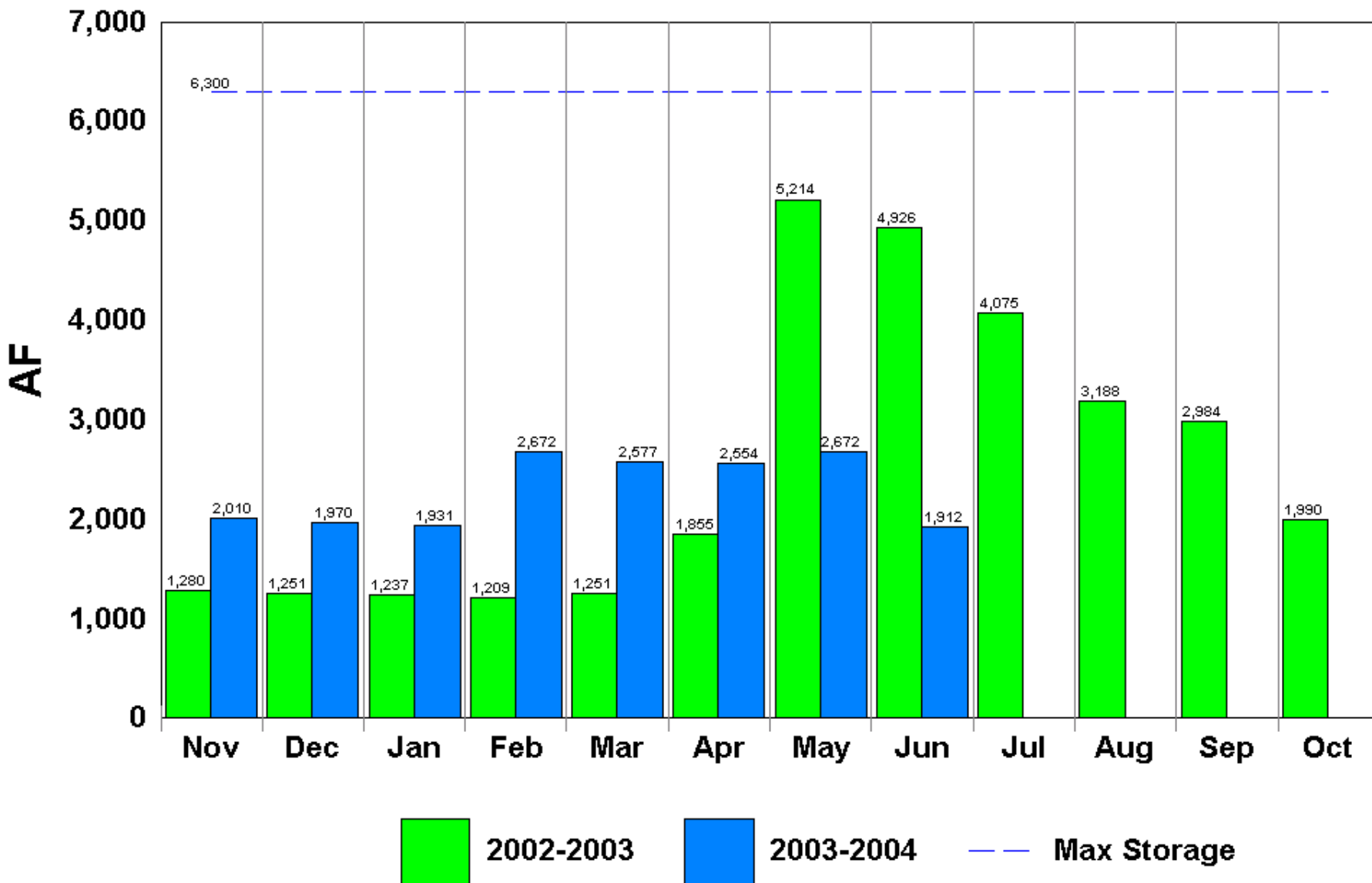
Horse Creek Reservoir

(Agricultural)



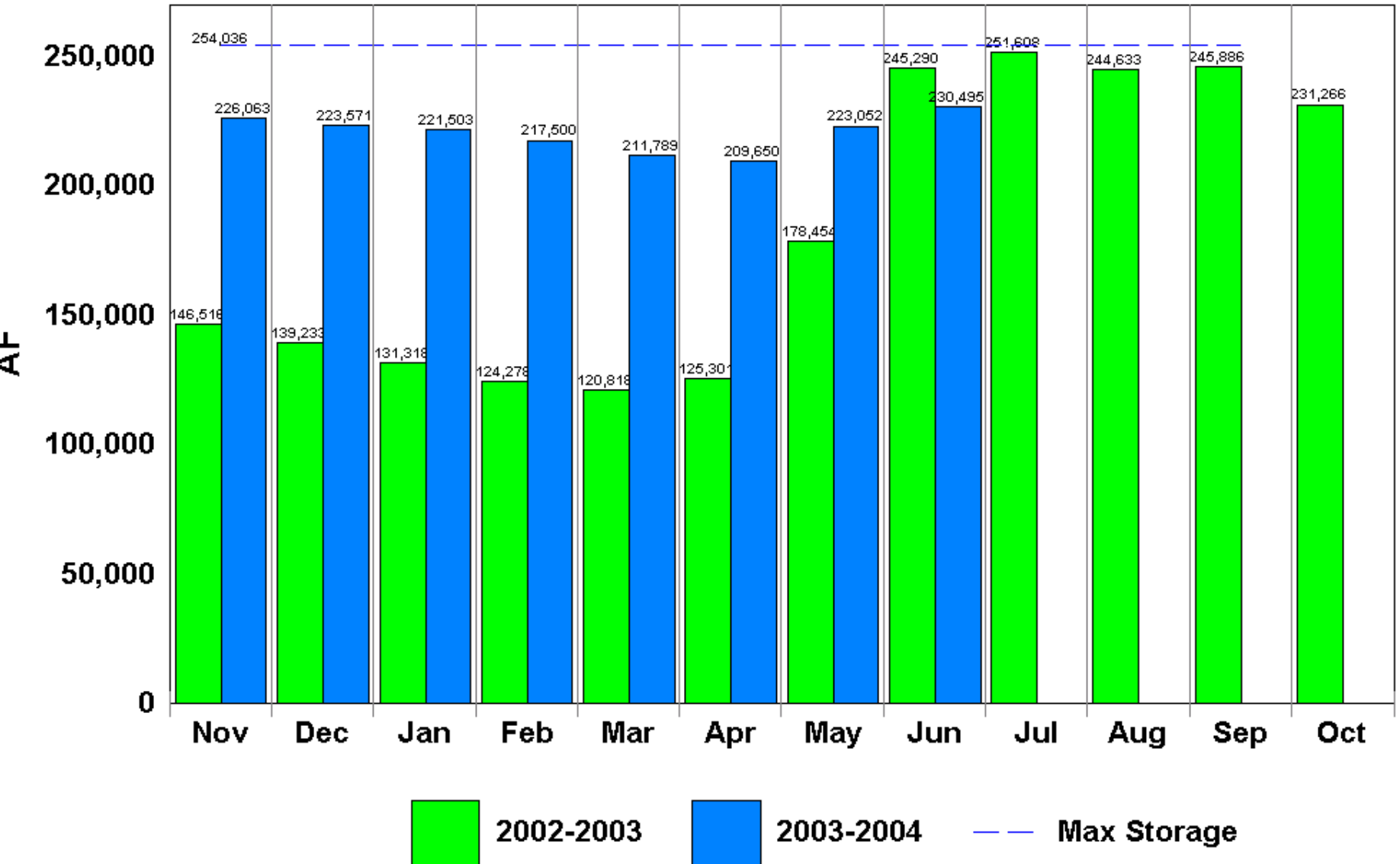
Prospect Reservoir

(Agricultural)



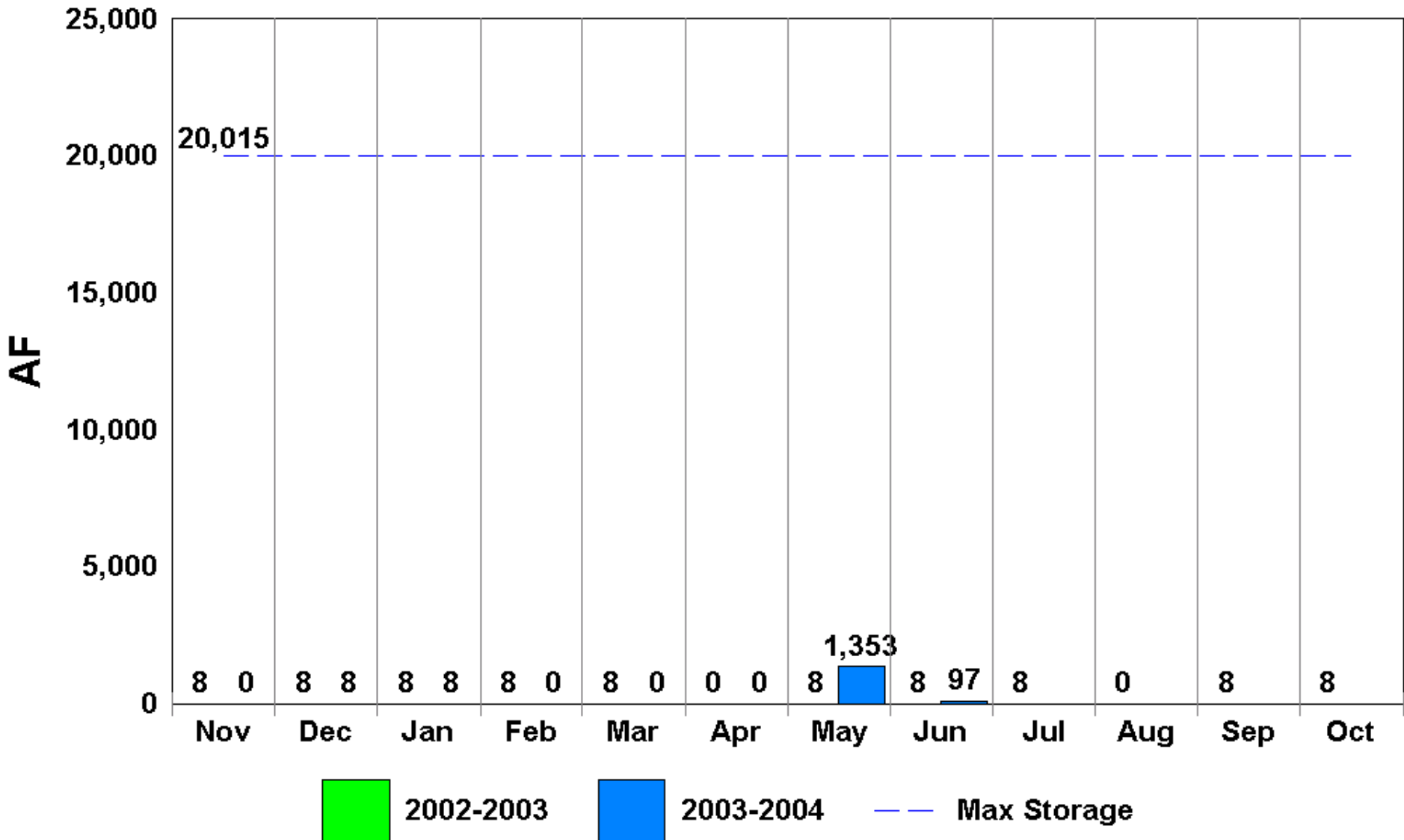
Dillon Reservoir

(Municipal)



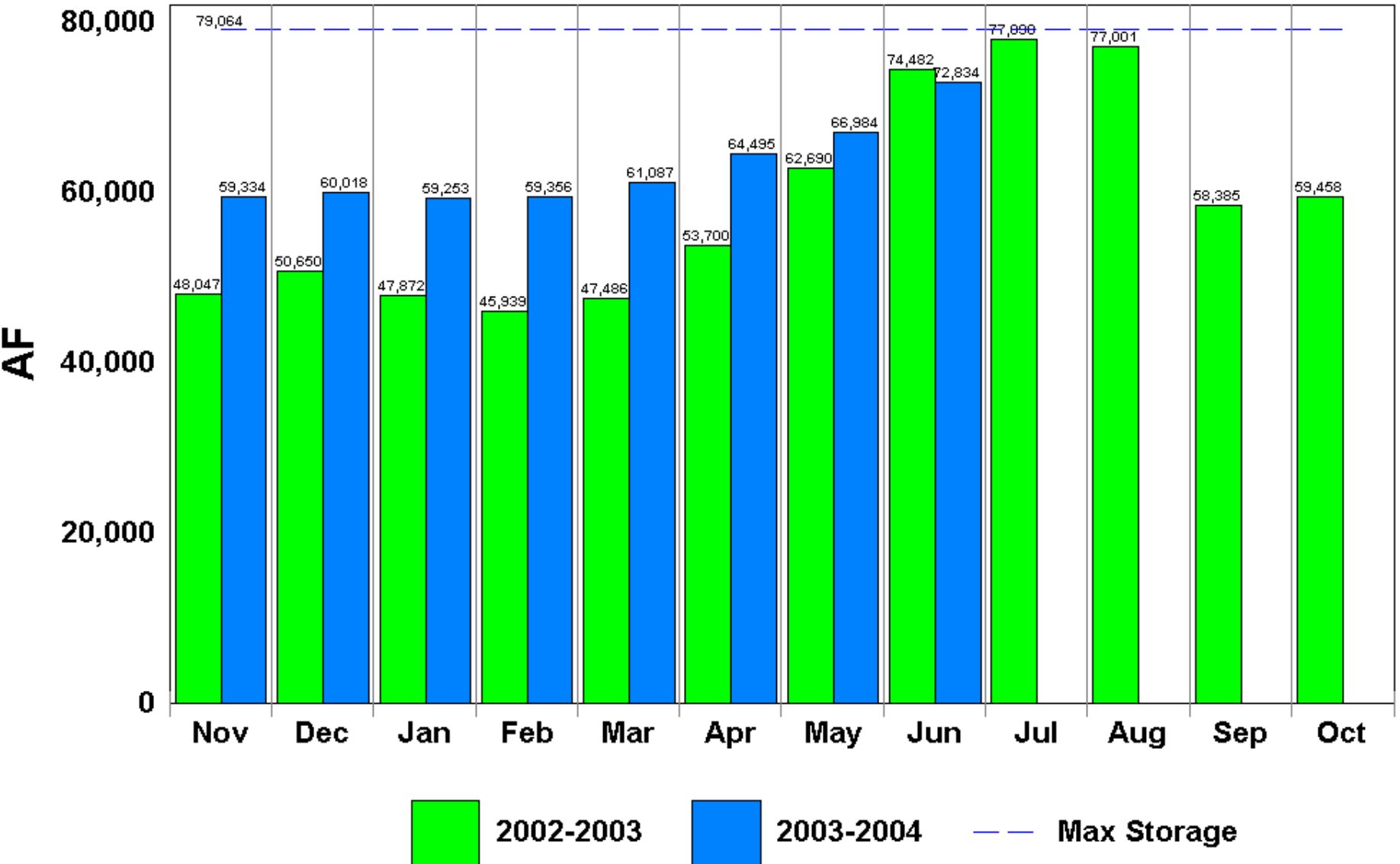
Antero Reservoir

(Municipal)



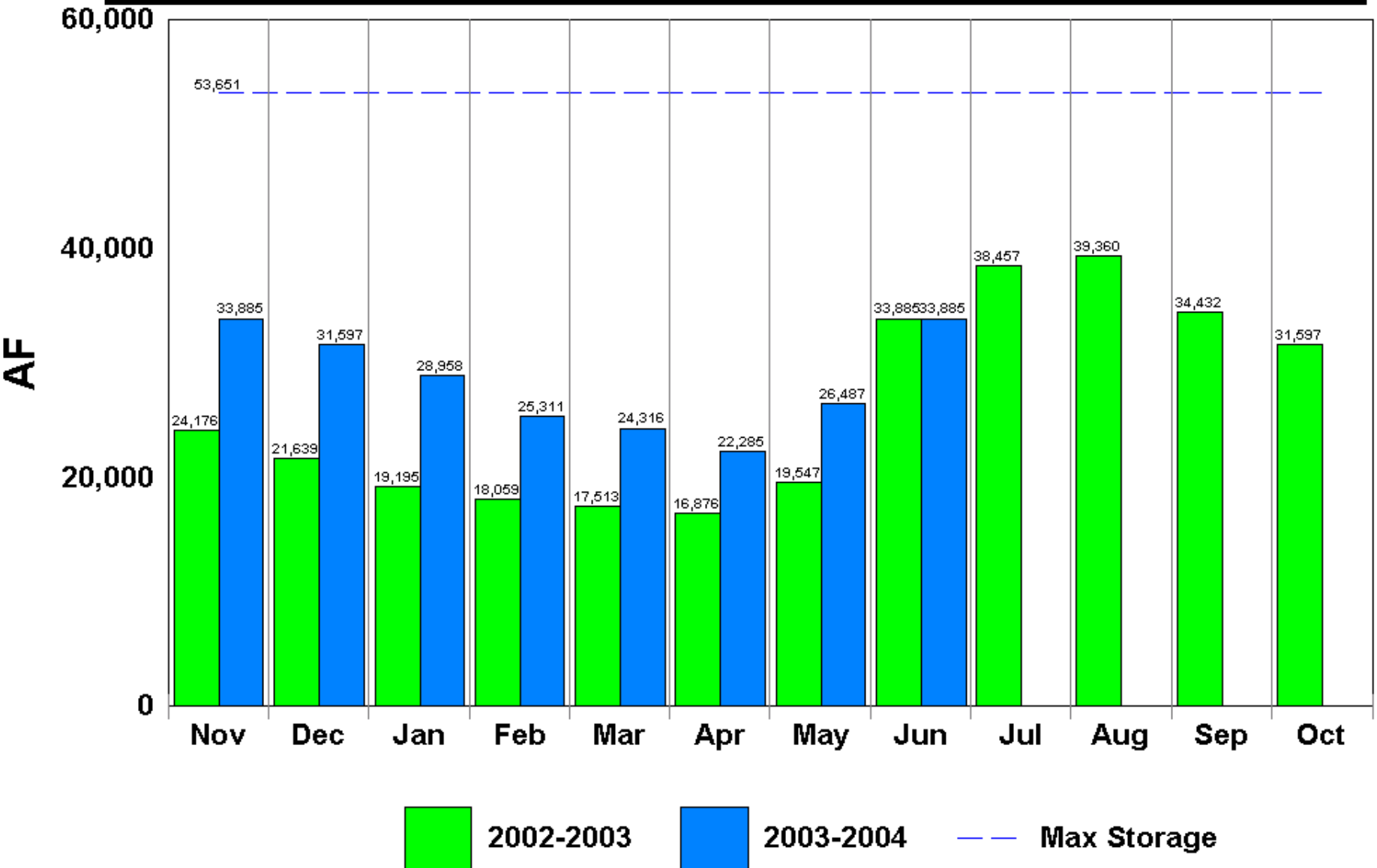
Cheesman Reservoir

(Municipal)



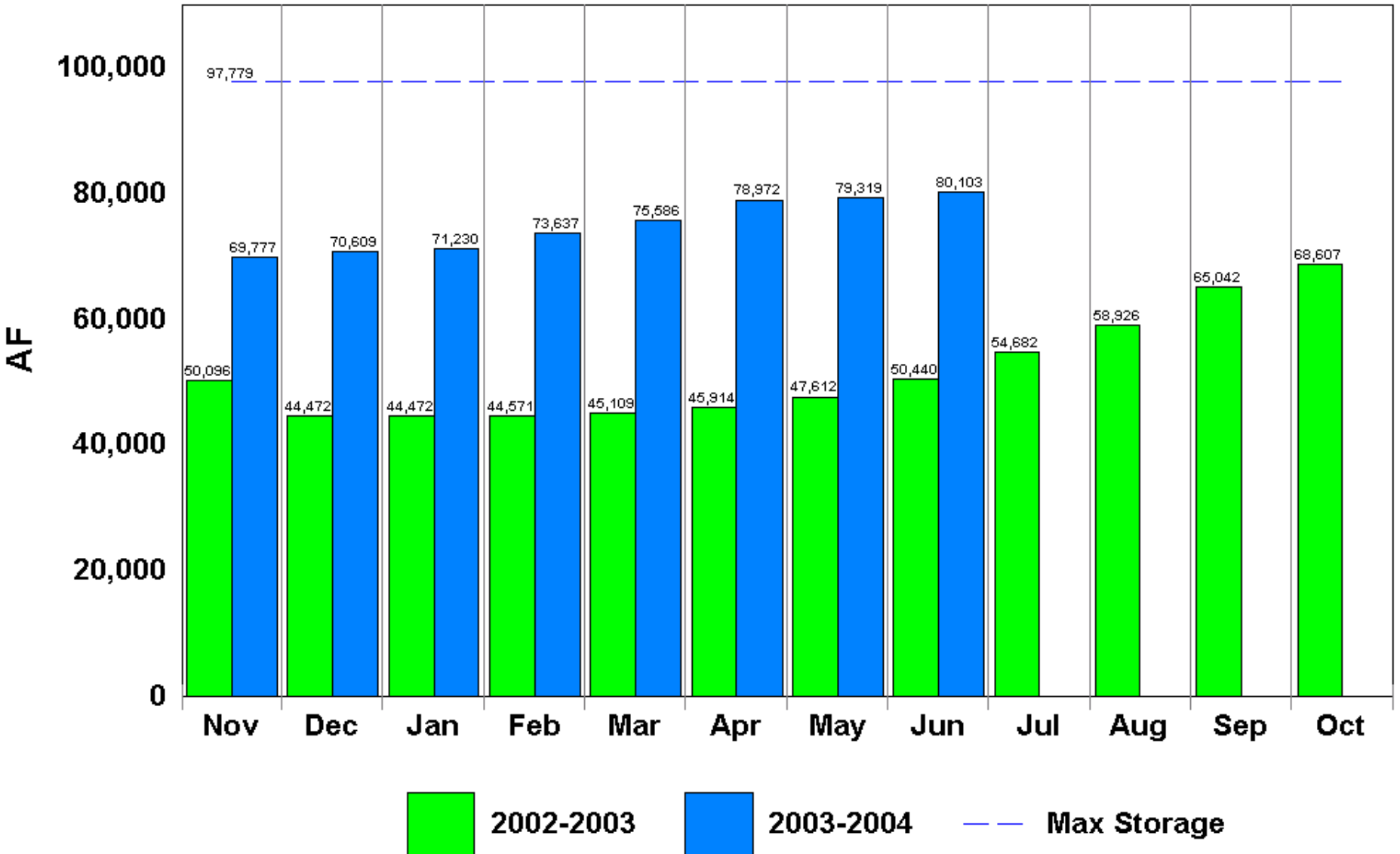
Spinney Mountain Reservoir

(Municipal)

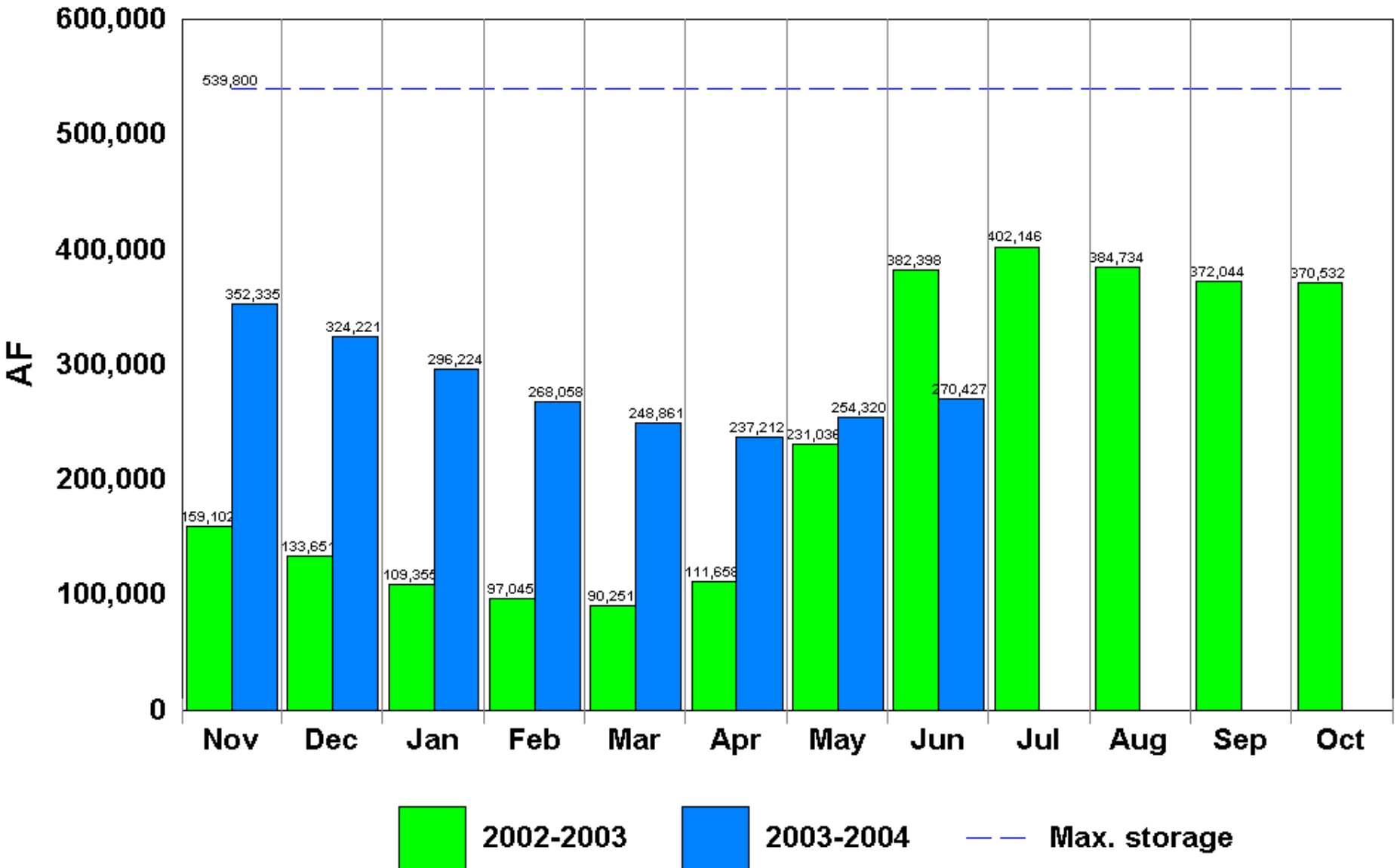


Eleven Mile Reservoir

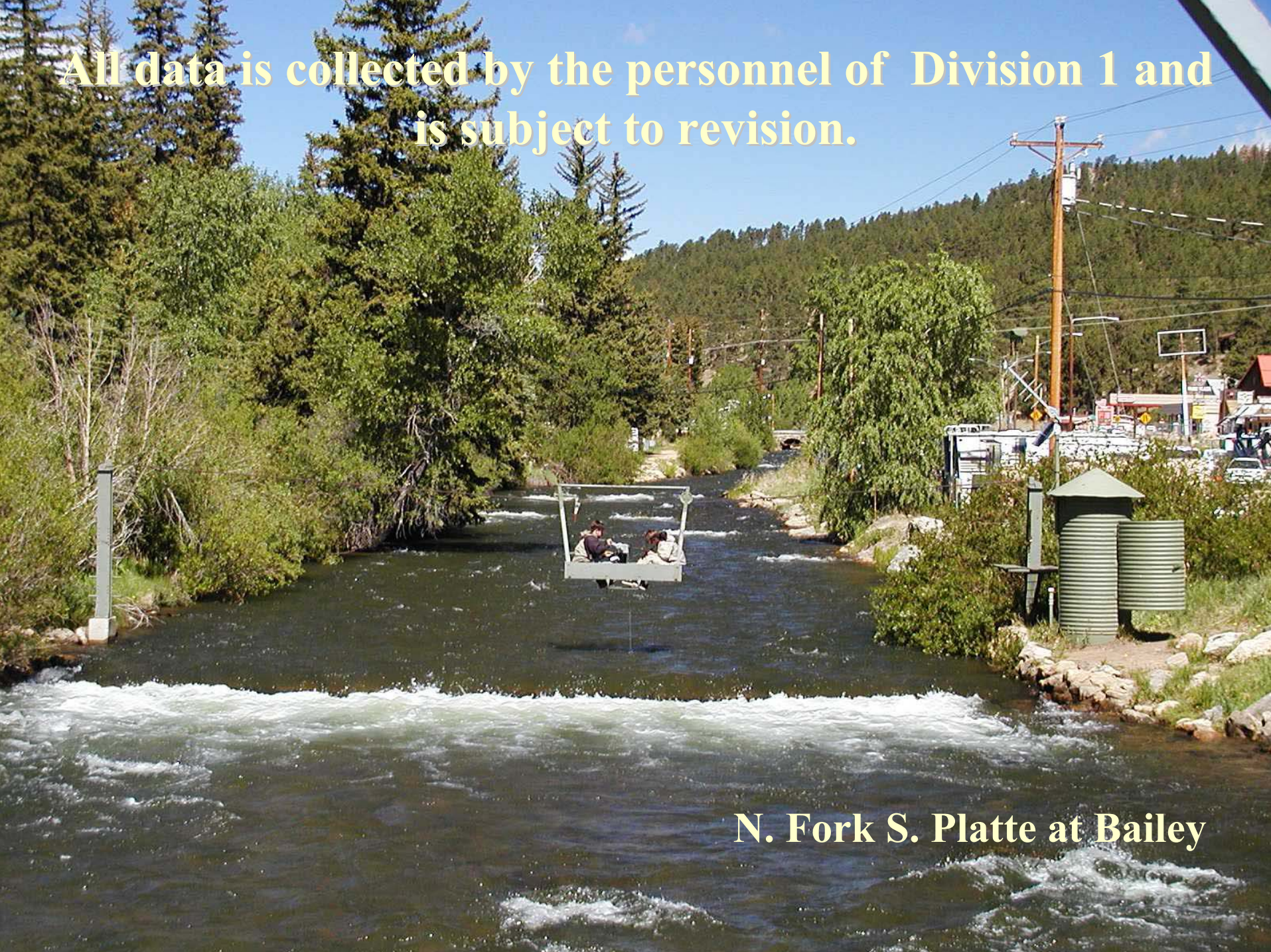
(Municipal)



Lake Granby



All data is collected by the personnel of Division 1 and is subject to revision.



N. Fork S. Platte at Bailey