

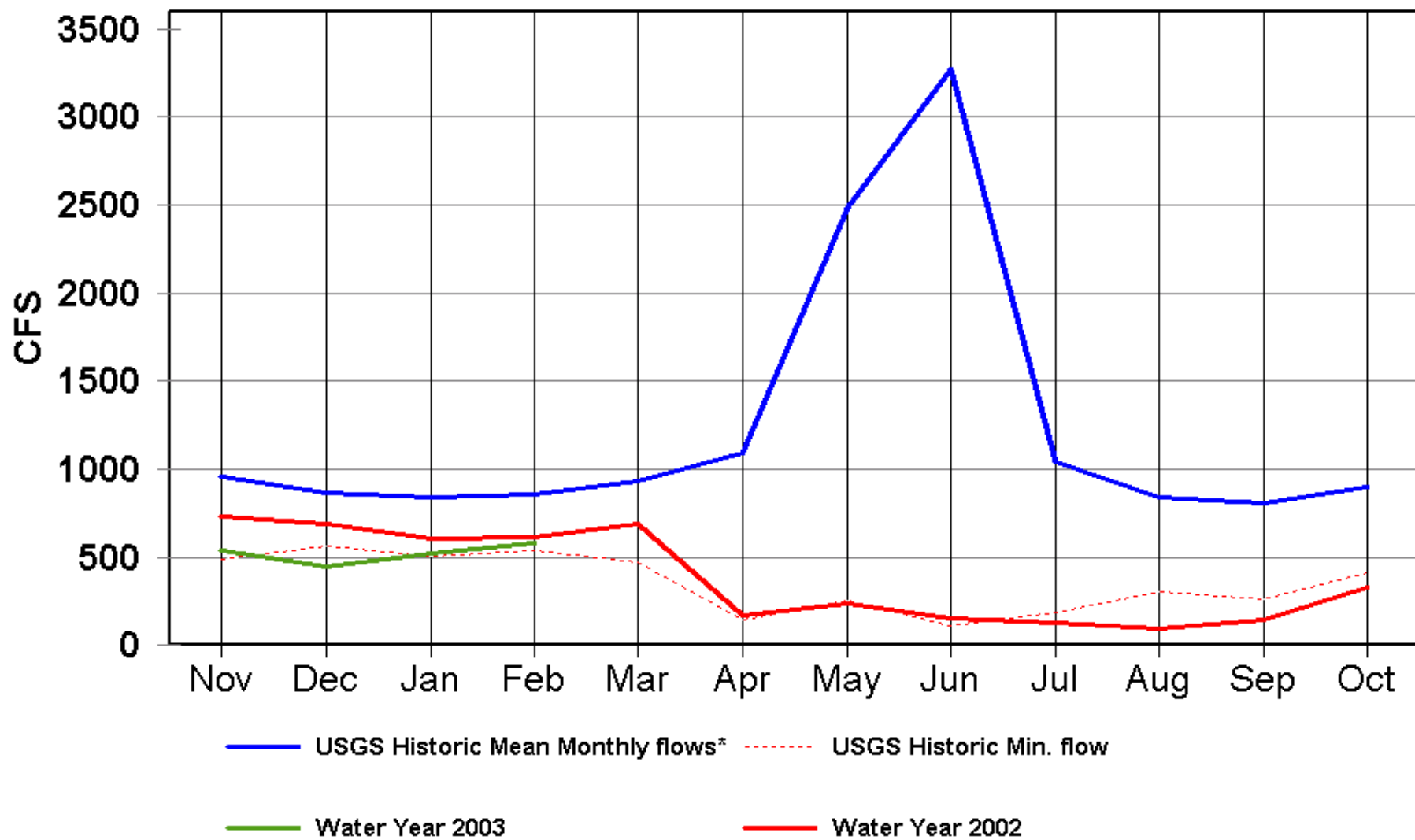


South Platte River Summary

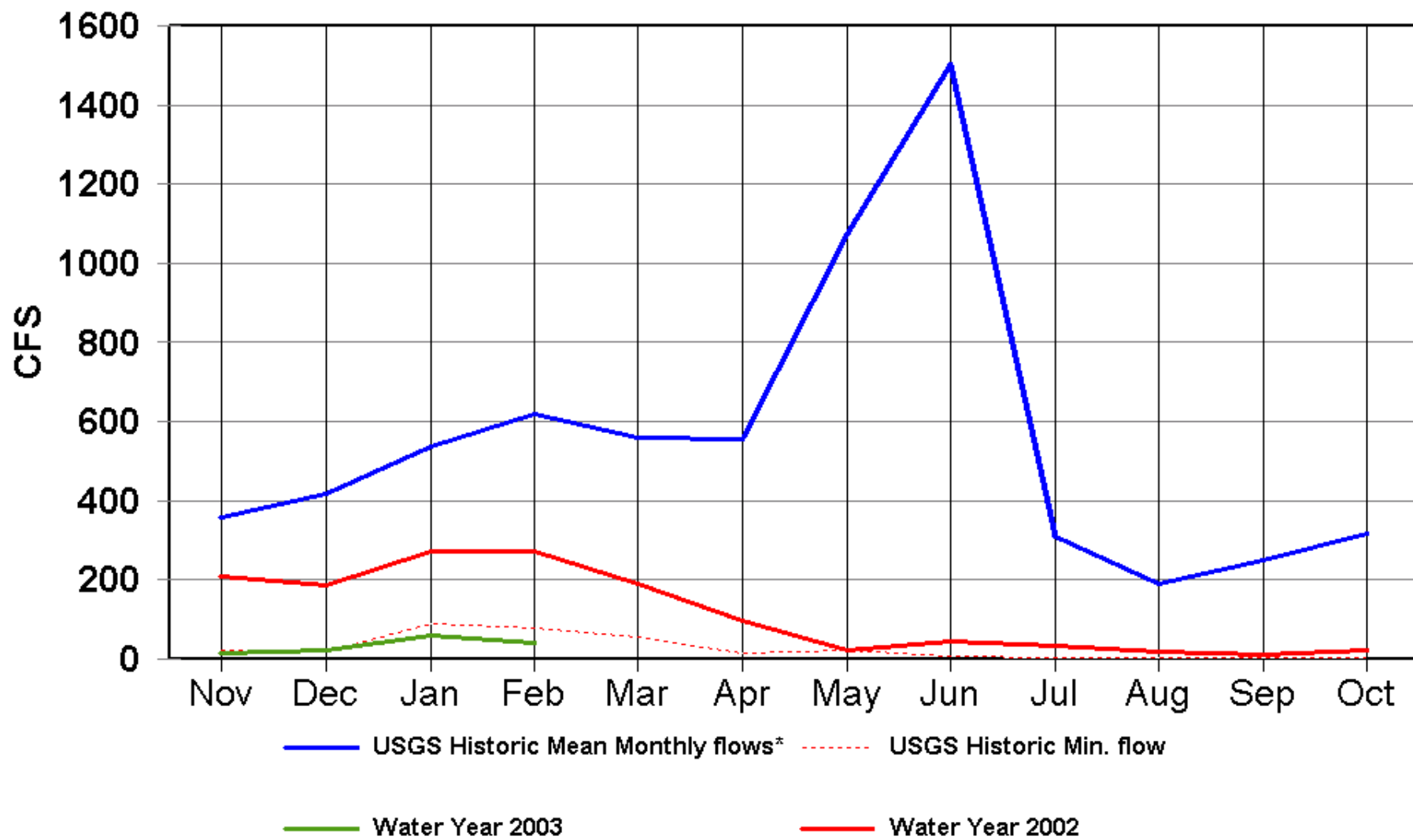
February 2003

By John Lochhead for SEO

South Platte River at Kersey IY 2003



South Platte River at Julesburg IY 2003



South Platte River Monthly Means, Historic, Max, Min.

South Platte River at Kersey

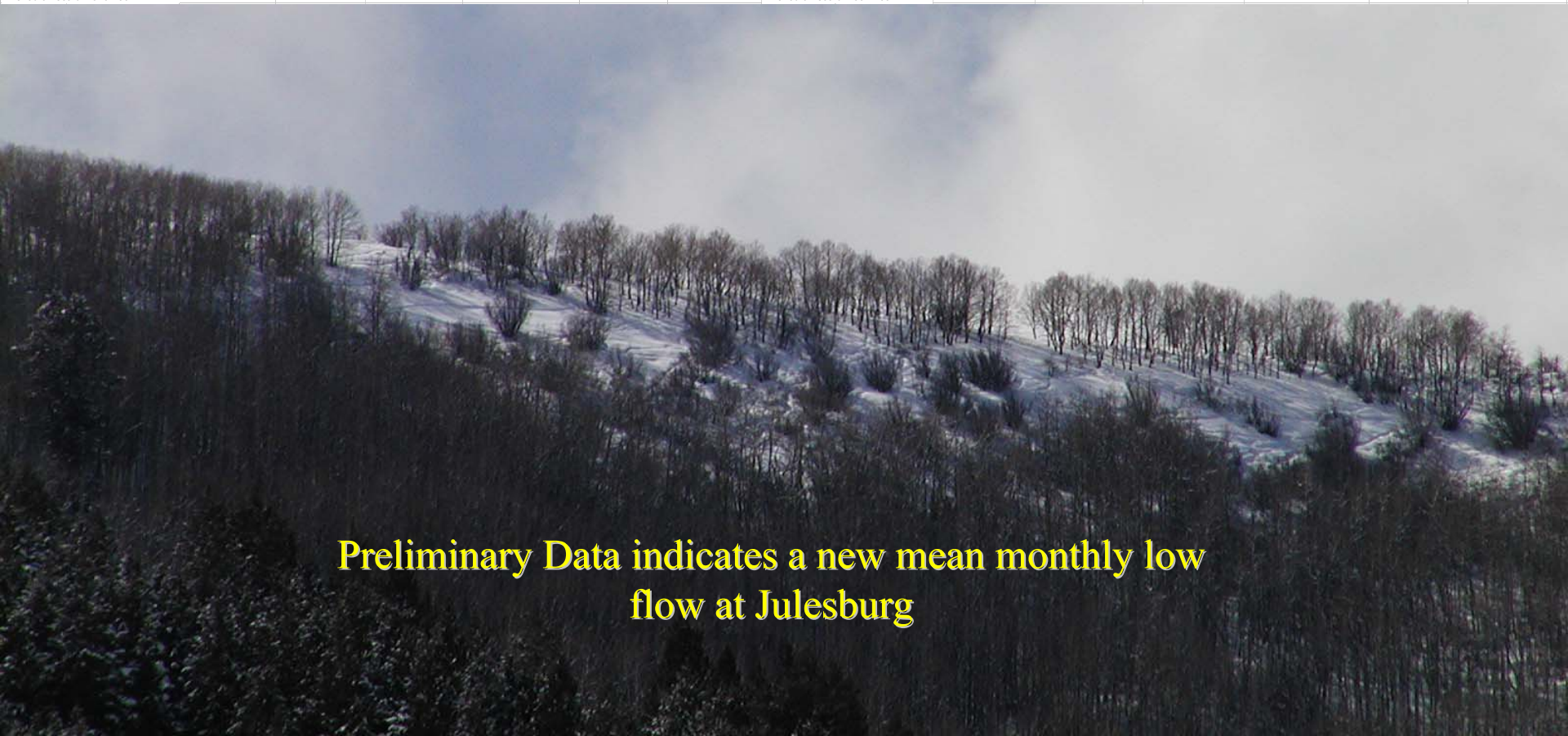
South Platte River at Julesburg

| | South Platte River at Kersey | | | | | | South Platte River at Julesburg | | | | | | | | |
|-----|------------------------------|------------------------|------|------------------------|------|------------------------------------|---------------------------------|----------------------------|------------------------|-------|------------------------|------|------------------------------------|-------------------|---|
| | USGS Historic Mean * | Historic Max flow * | Year | Historic Min flow * | Year | IY 2003 mean monthly flow | Estimated Mean | USGS Historic Mean * | Historic Max flow * | Year | Historic Min flow * | Year | IY 2003 mean monthly flow | Estimated Mean | |
| Nov | 953 | 2585 | 1985 | 488 | 1978 | 536 | | Nov | 358 | 2358 | 1985 | 23 | 1911 | 16 | |
| Dec | 863 | 1337 | 1985 | 568 | 1982 | 445 | | Dec | 420 | 1371 | 1985 | 18.8 | 1912 | 23 | |
| Jan | 845 | 1434 | 1984 | 503 | 1982 | 523 | | Jan | 538 | 1571 | 1998 | 89.9 | 1965 | 59 | |
| Feb | 858 | 1641 | 1984 | 540 | 1978 | 576 | | Feb | 619 | 1864 | 1930 | 78.9 | 1935 | 40 | * |
| Mar | 929 | 1852 | 1983 | 473 | 1982 | | | Mar | 559 | 2200 | 1939 | 56.9 | 1904 | | |
| Apr | 1096 | 3894 | 1983 | 144 | 1982 | | | Apr | 555 | 2808 | 1983 | 17.3 | 1904 | | |
| May | 2486 | 13060 | 1980 | 251 | 1977 | | | May | 1075 | 9922 | 1980 | 24.1 | 1911 | | |
| Jun | 3267 | 14520 | 1983 | 113 | 1977 | | | Jun | 1504 | 12200 | 1983 | 8.33 | 1910 | | |
| Jul | 1040 | 5784 | 1983 | 183 | 1994 | | | Jul | 309 | 5059 | 1983 | 2.15 | 1903 | | |
| Aug | 844 | 2783 | 1984 | 304 | 1981 | | | Aug | 189 | 1882 | 1997 | 2.52 | 1902 | | |
| Sep | 809 | 2079 | 1984 | 259 | 1977 | | | Sep | 252 | 1964 | 1984 | 5.6 | 1903 | | |
| Oct | 894 | 3388 | 1985 | 415 | 1978 | | | Oct | 318 | 2427 | 1985 | 5.85 | 1904 | | |

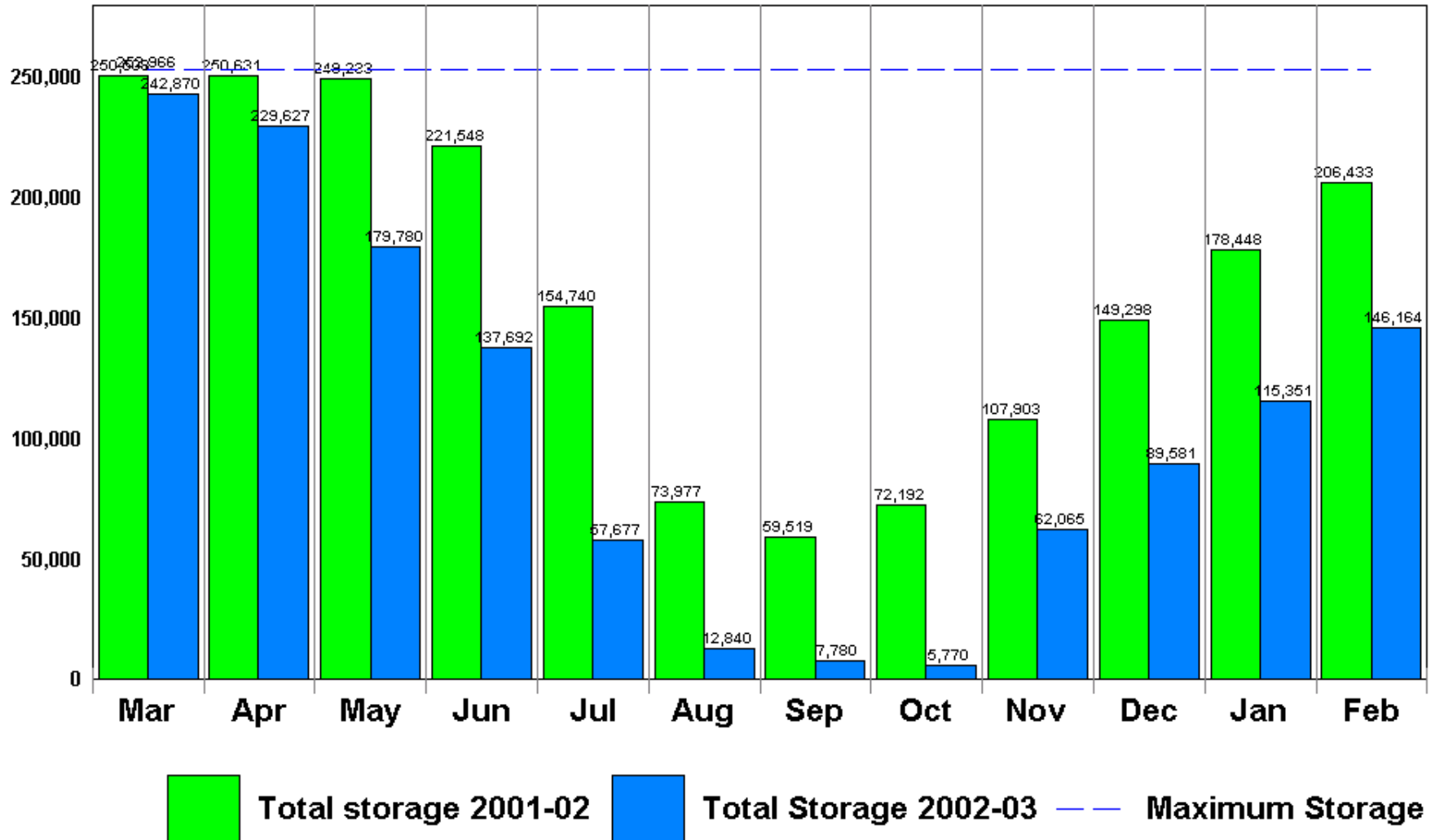
*Period of record 1976-2001

*Period of record 1902-2001

Preliminary Data indicates a new mean monthly low flow at Julesburg

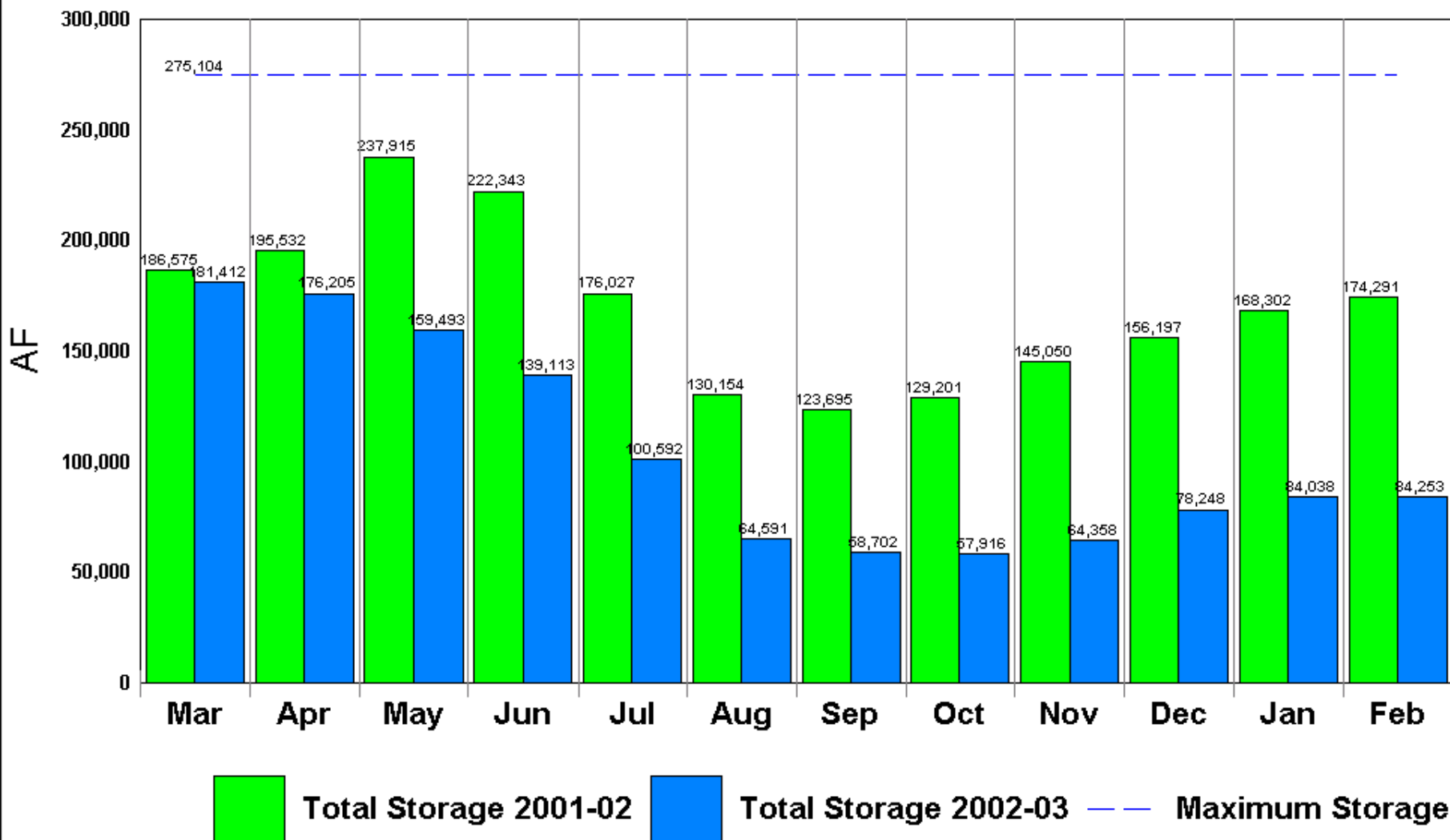


South Platte Reservoirs Storage below Kersey



*Empire, Riverside, Jackson, Prewitt, N. Sterling, Julesburg. by jhl

South Platte Reservoirs Storage above Kersey

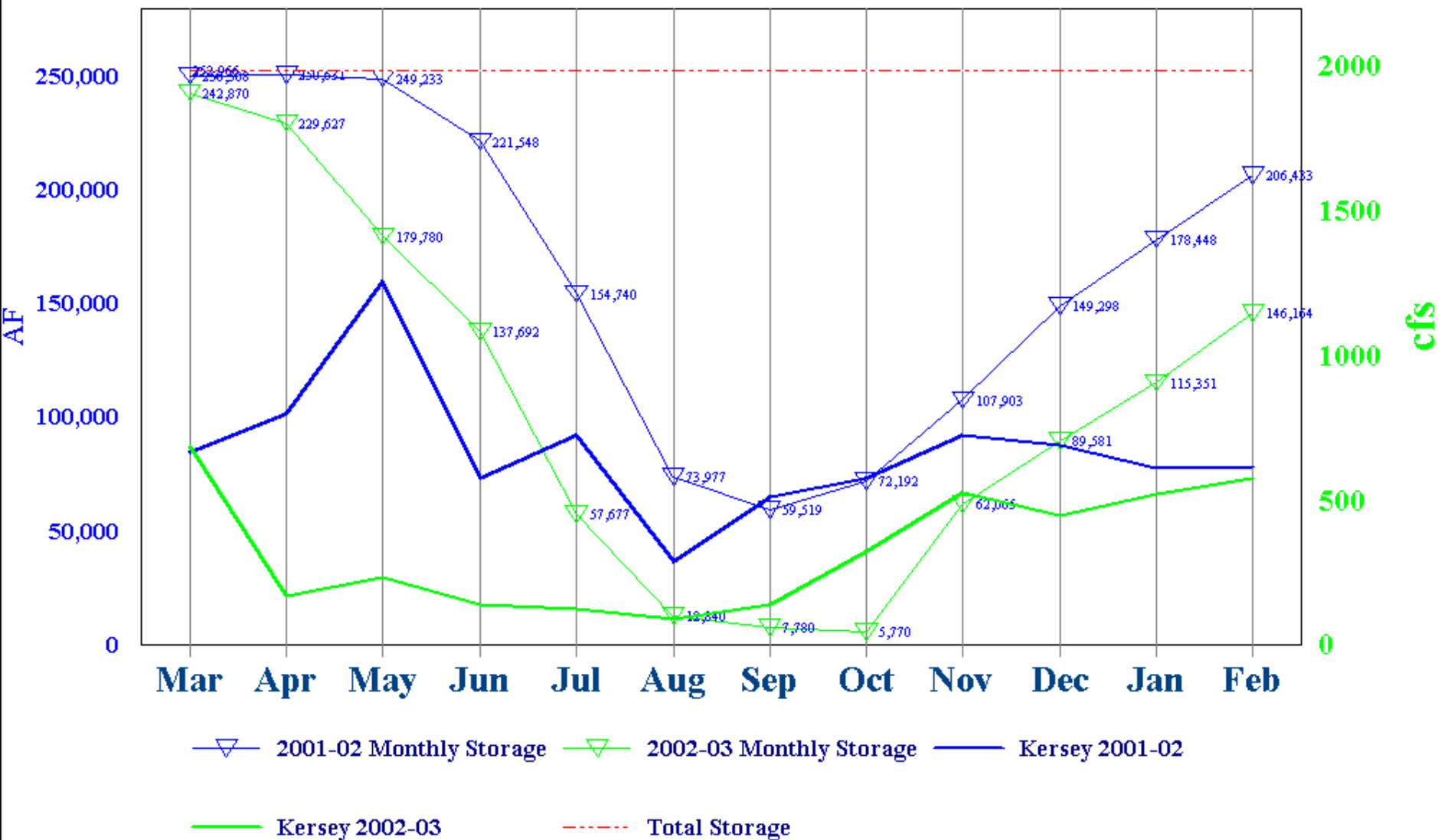




The next two graphs same data as last two but presented as line graphs.

Reservoir Storage below Kersey

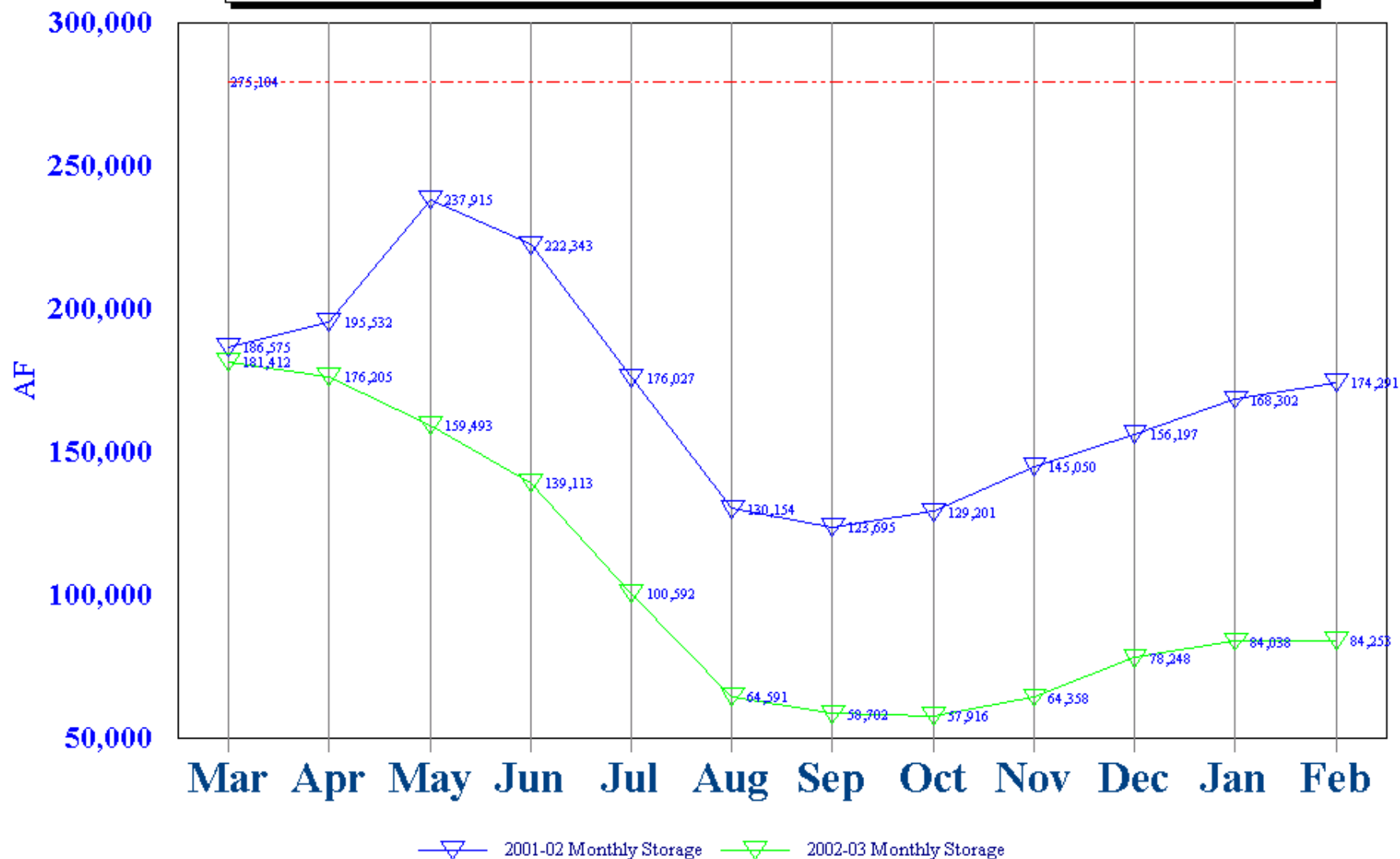
Selected Reservoirs*



*Empire, Riverside, Jackson, Prewitt, N. Sterling, Julesburg. by jhl

Reservoir Storage above Kersey

Selected Reservoirs*



*Barr,Cobb,FossilCrk,Halligan,Marshall,Milton,Union,Standley,LowerLatham,Boyd,Loveland,Windsor,HorseCrk,Prospect. by jhl

COLORADO DIVISION OF WATER RESOURCES, DIVISION 1

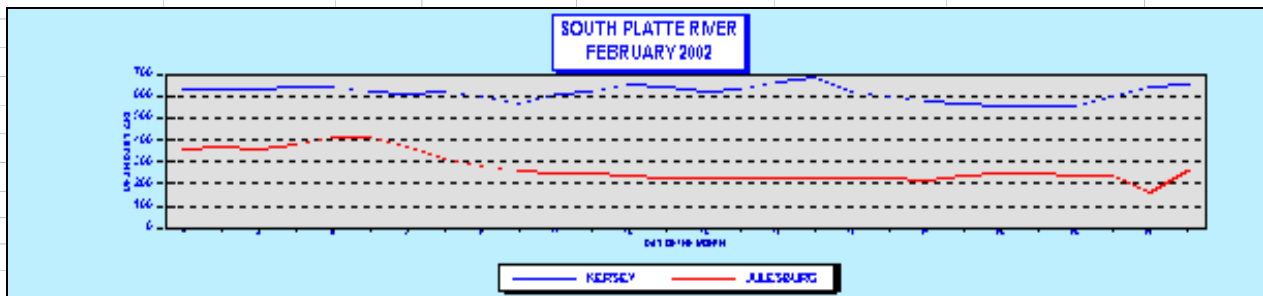
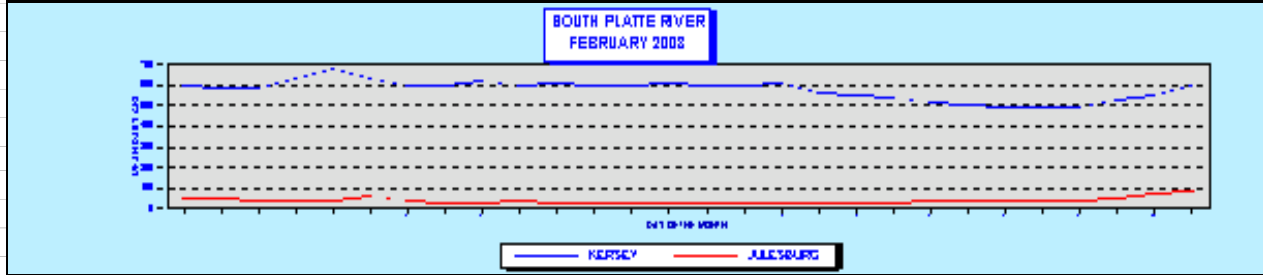
MONTH OF FEBRUARY 2003

05-Mar

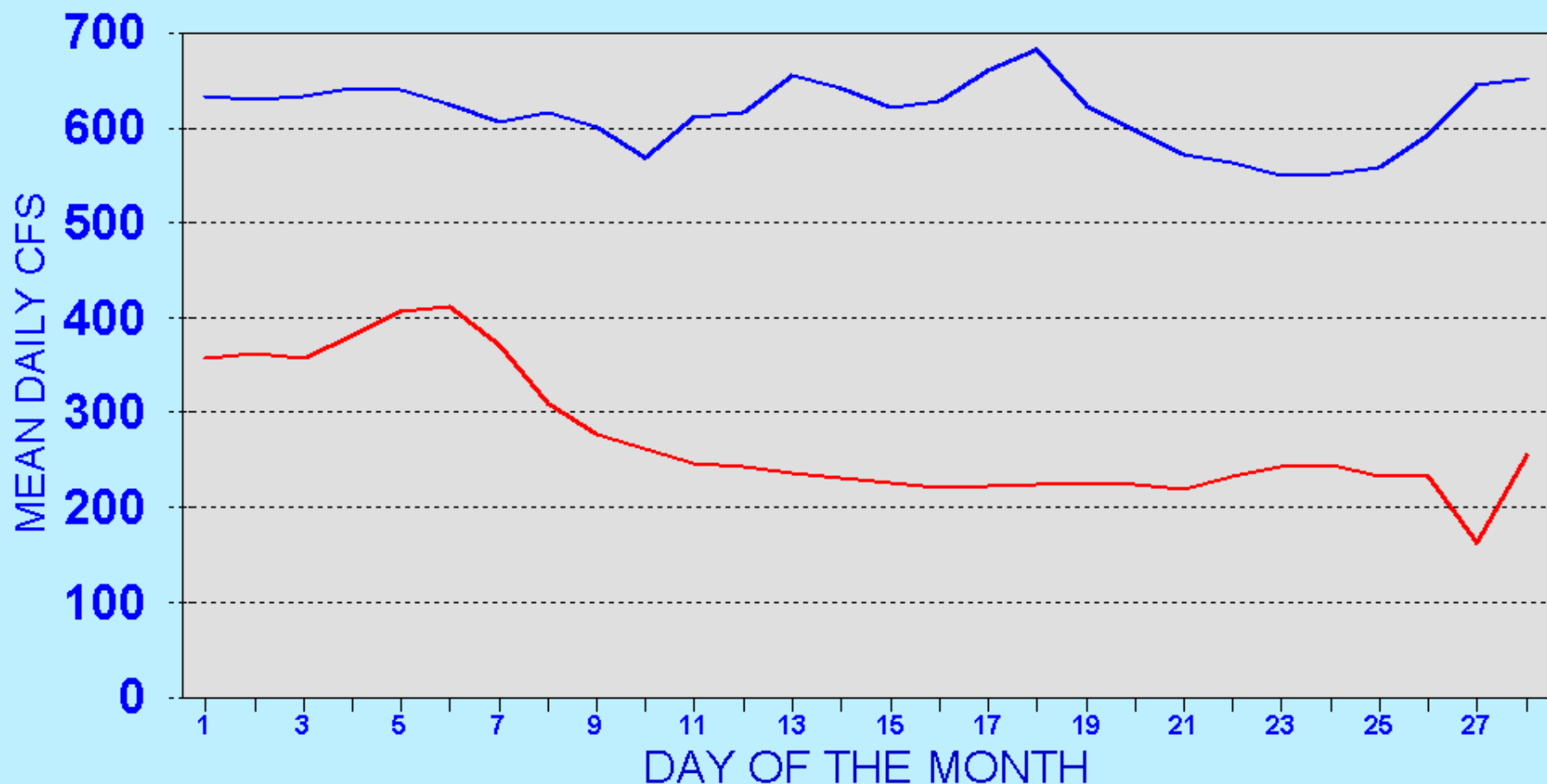
| RESERVOIR | FULL ALLOWABLE CAPACITY (ACRE FEET) | FIRST OF MONTH (ACRE FEET) | END OF MONTH (ACRE FEET) | DISTRICT | CHANGE IN STORAGE (ACRE FEET) | % CHANGE IN STORAGE BASED ON FIRST OF MONTH STORAGE | % OF CURRENT FULL ALLOWABLE CAPACITY | % OF CURRENT FULL ALLOWABLE CAPACITY THIS MONTH, (LAST YEAR) | SURCHARGE (ACRE FEET) |
|----------------|-------------------------------------|----------------------------|--------------------------|----------|-------------------------------|---|--------------------------------------|--|-----------------------|
| JULESBURG | 22,666 | 18,820 | 19,940 | 64 | 1,120 | 6% | 88% | 78% | 0 |
| NORTH STERLING | 73,730 | 22,920 | 29,080 | 64 | 6,160 | 27% | 39% | 77% | 0 |
| PREWITT | 28,500 | 6,340 | 9,050 | 64 | 2,710 | 43% | 32% | 85% | 0 |
| JACKSON EMPIRE | 27,257 | 25,320 | 24,682 | 1 | (638) | -3% | 91% | 80% | 0 |
| RIVERSIDE | 37,700 | 16,428 | 25,360 | 1 | 8,932 | 54% | 67% | 83% | 0 |
| BARR LAKE | 63,113 | 25,523 | 38,052 | 1 | 12,529 | 49% | 60% | 87% | 0 |
| CHEESMAN | 31,652 | 14,992 | 13,777 | 2 | (1,215) | -8% | 44% | 79% | 0 |
| ELEVEN MILE | 79,064 | 47,872 | 45,939 | 80 | (1,933) | -4% | 58% | 73% | 0 |
| SPINNEY | 97,779 | 44,472 | 44,571 | 23 | 99 | 0% | 46% | 100% | 0 |
| ANTERO | 53,651 | 19,195 | 18,059 | 23 | (1,136) | -6% | 34% | 50% | 0 |
| ANTERO | 20,015 | 8 | 8 | 23 | 0 | 0% | 0% | 100% | 0 |

| RIVER GAGES | MEAN DAILY FLOW (CFS) |
|----------------------------------|-----------------------|
| KERSEY | 576 |
| JULESBURG | 40 |
| THIS MONTH LAST YEAR | |
| KERSEY | 615 |
| JULESBURG | 272 |
| MEAN FOR PERIOD OF RECORD | |
| KERSEY | 858 |
| JULESBURG | 619 |

* 1976-2001
1902-2001



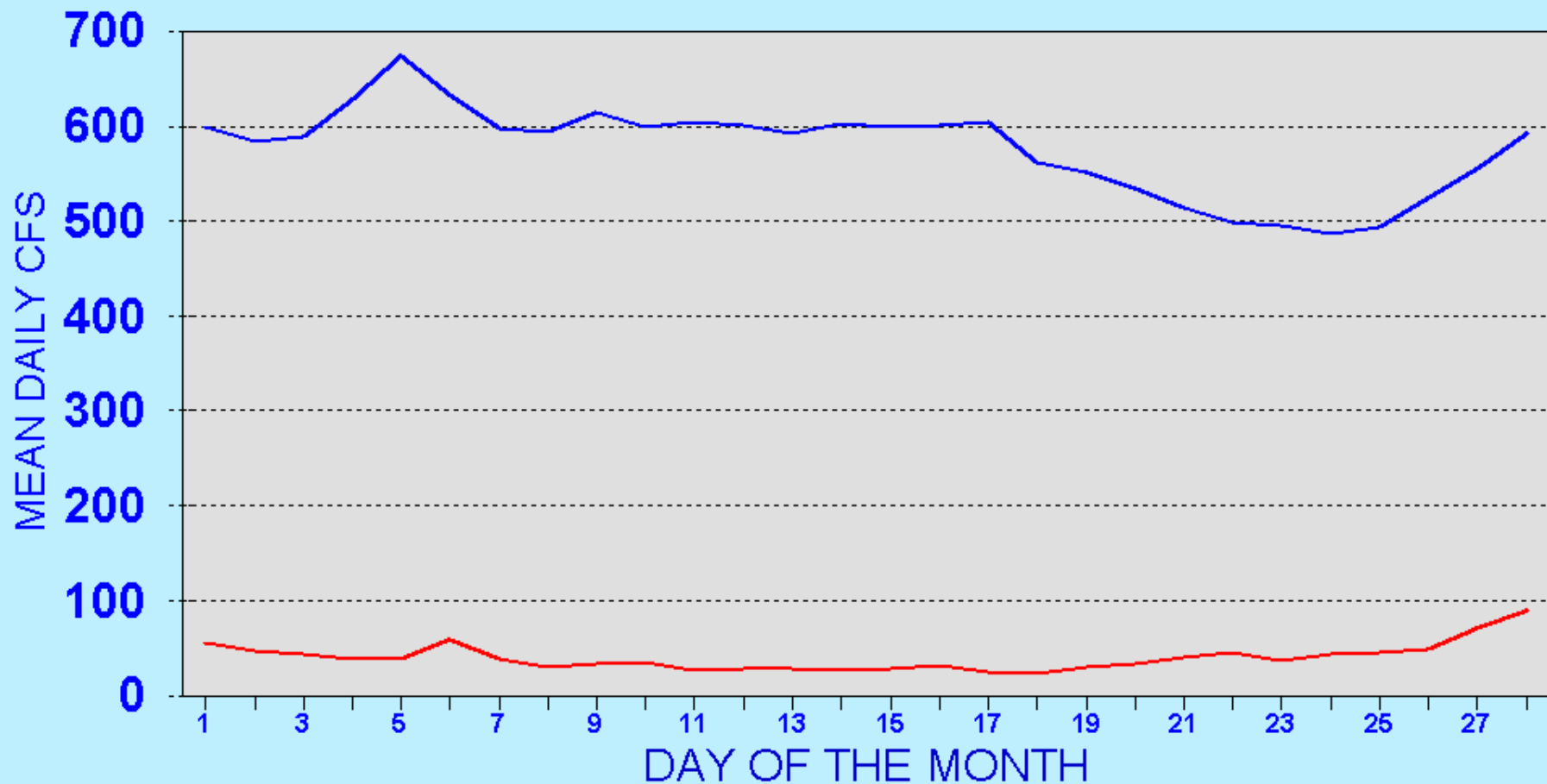
SOUTH PLATTE RIVER FEBRUARY 2002



— KERSEY

— JULESBURG

SOUTH PLATTE RIVER FEBRUARY 2003

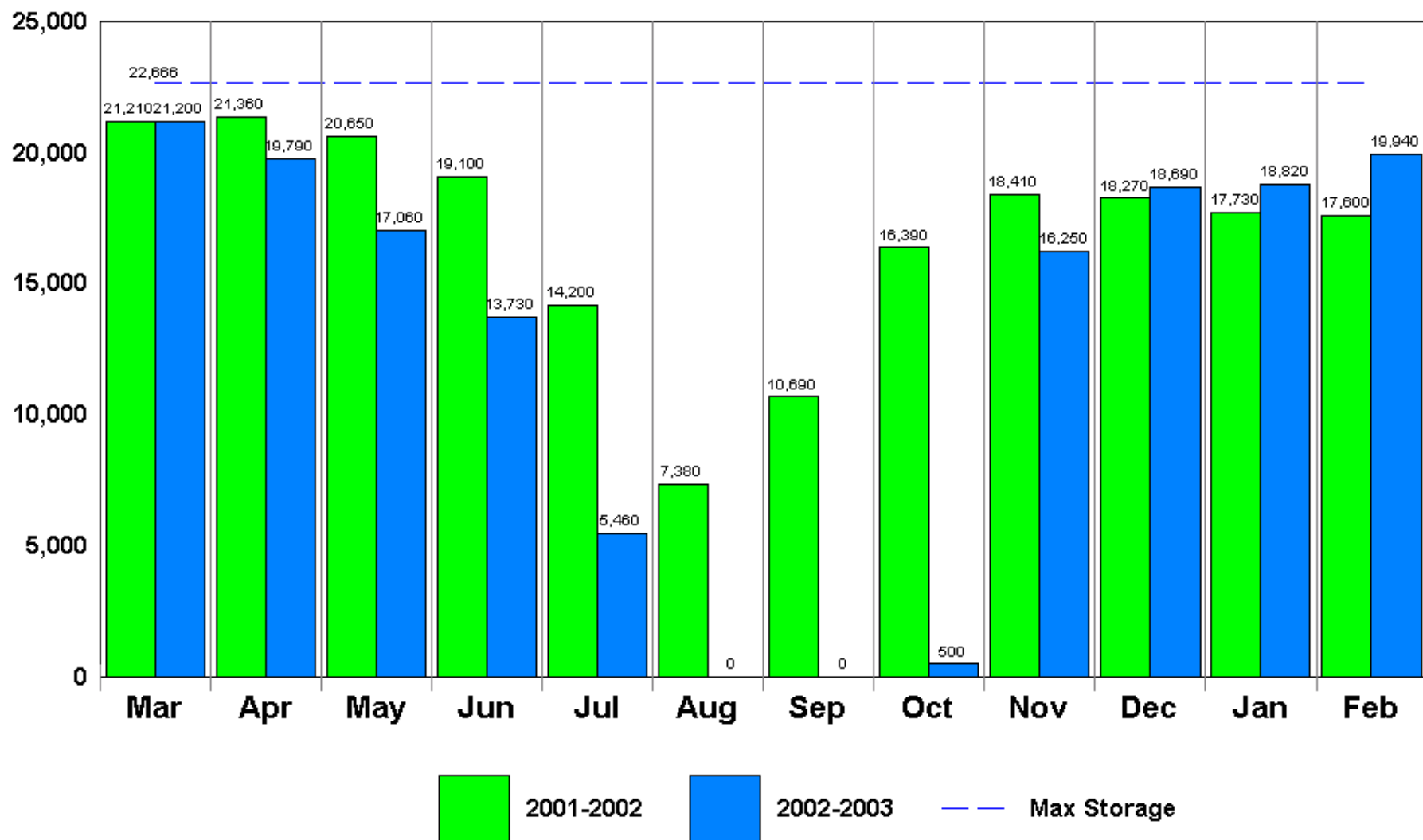


— KERSEY

— JULESBURG

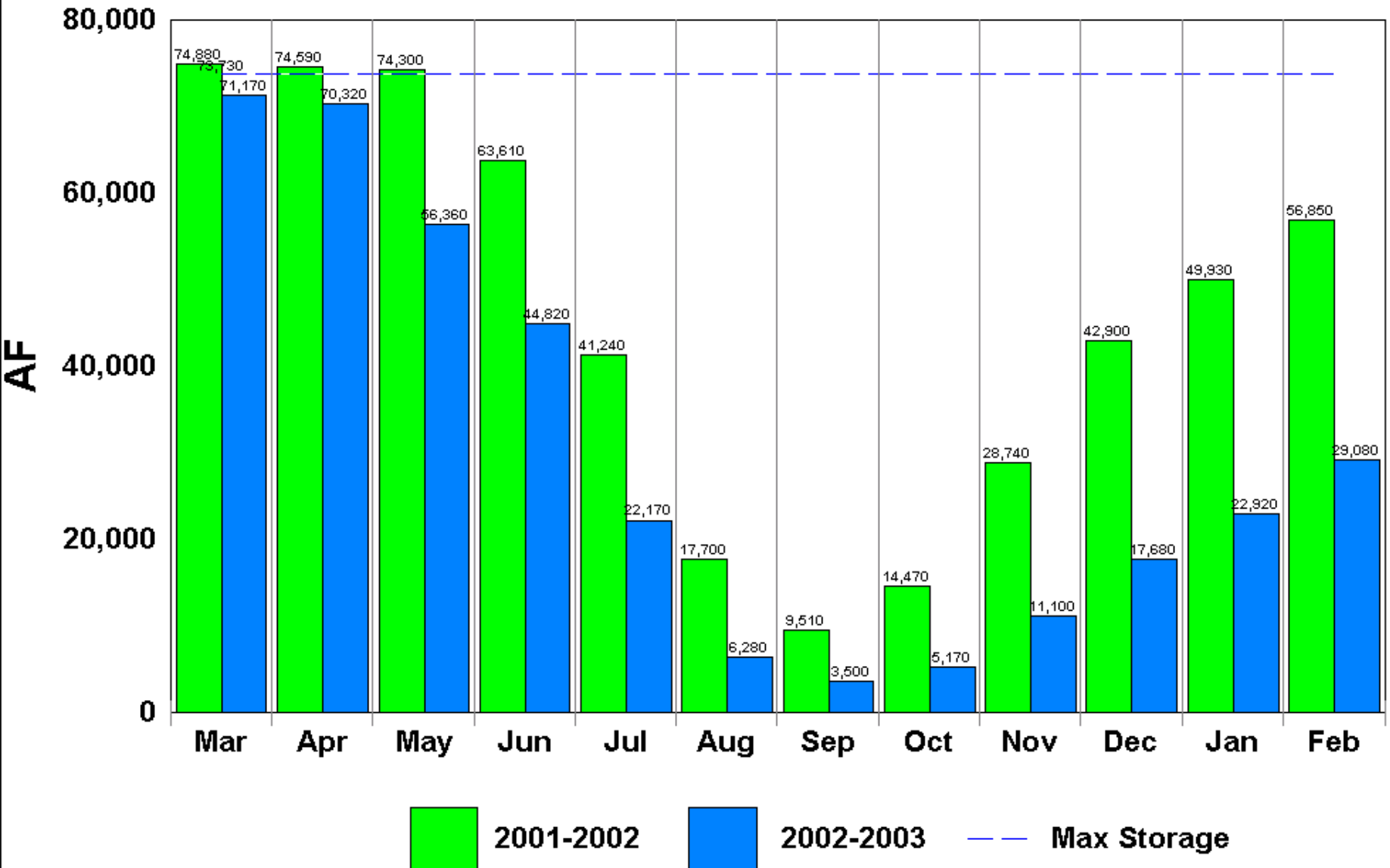
Julesburg Reservoir

(Agricultural)



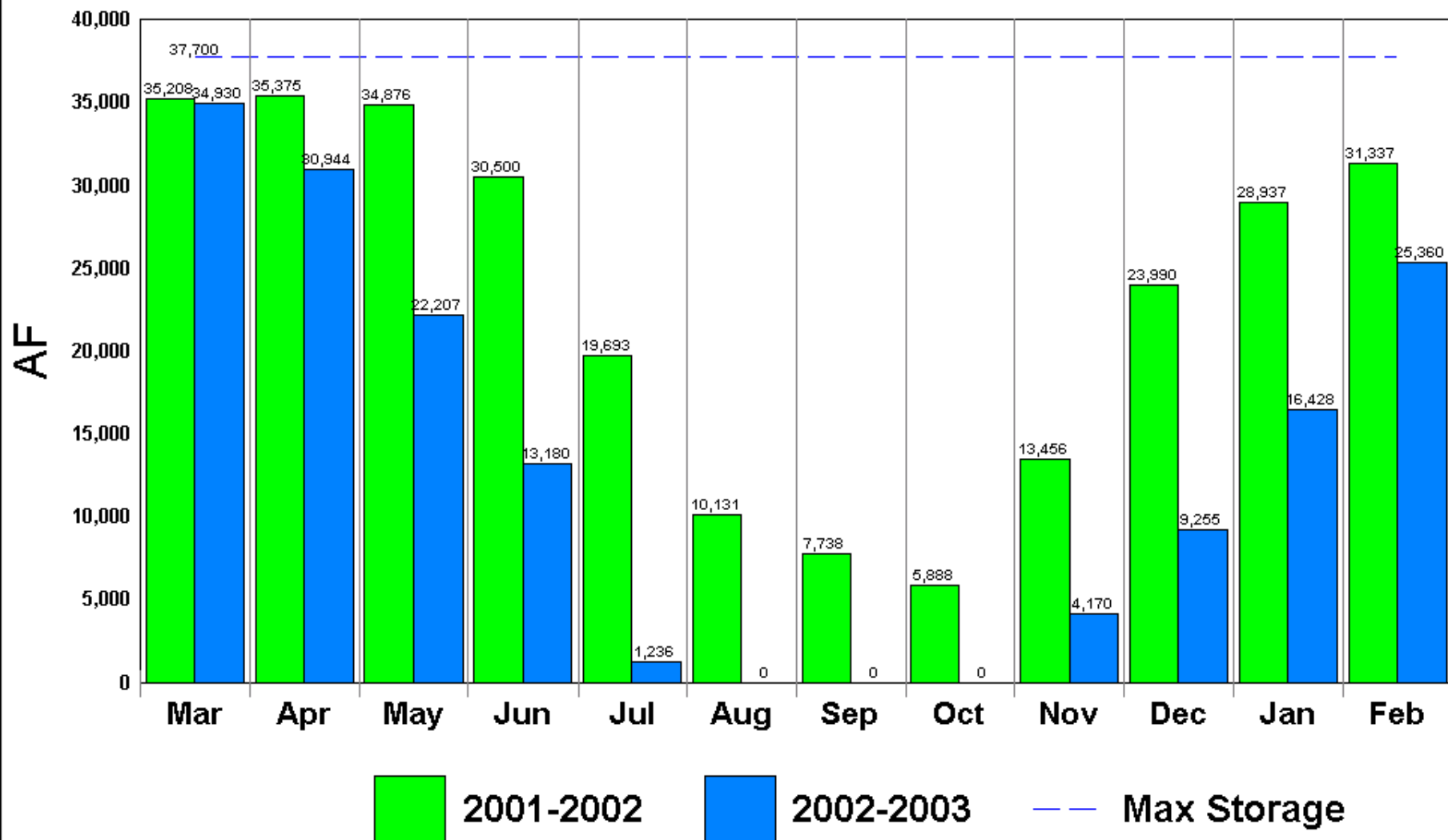
N. Sterling Reservoir

(Agricultural)



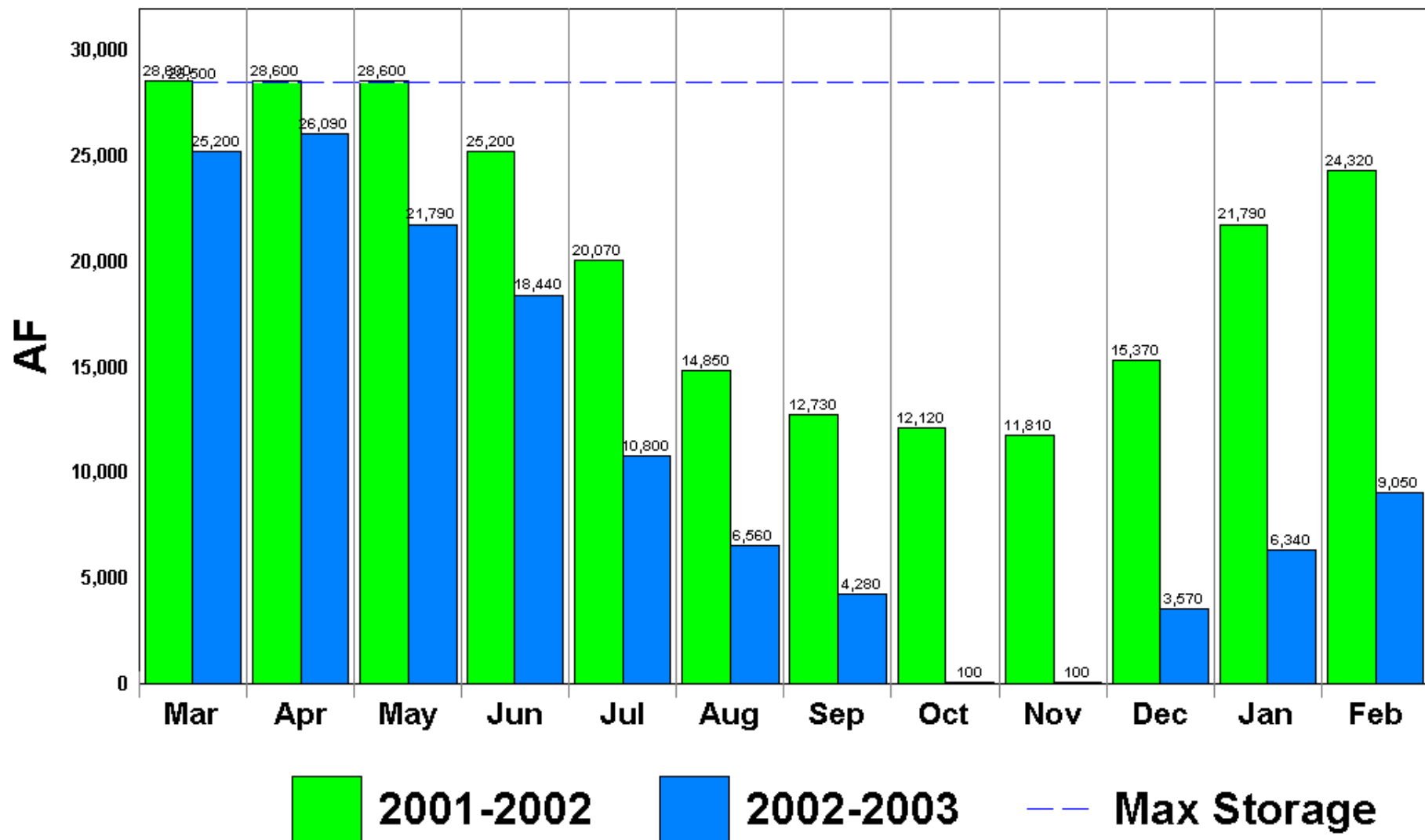
Empire Reservoir

(Agricultural)



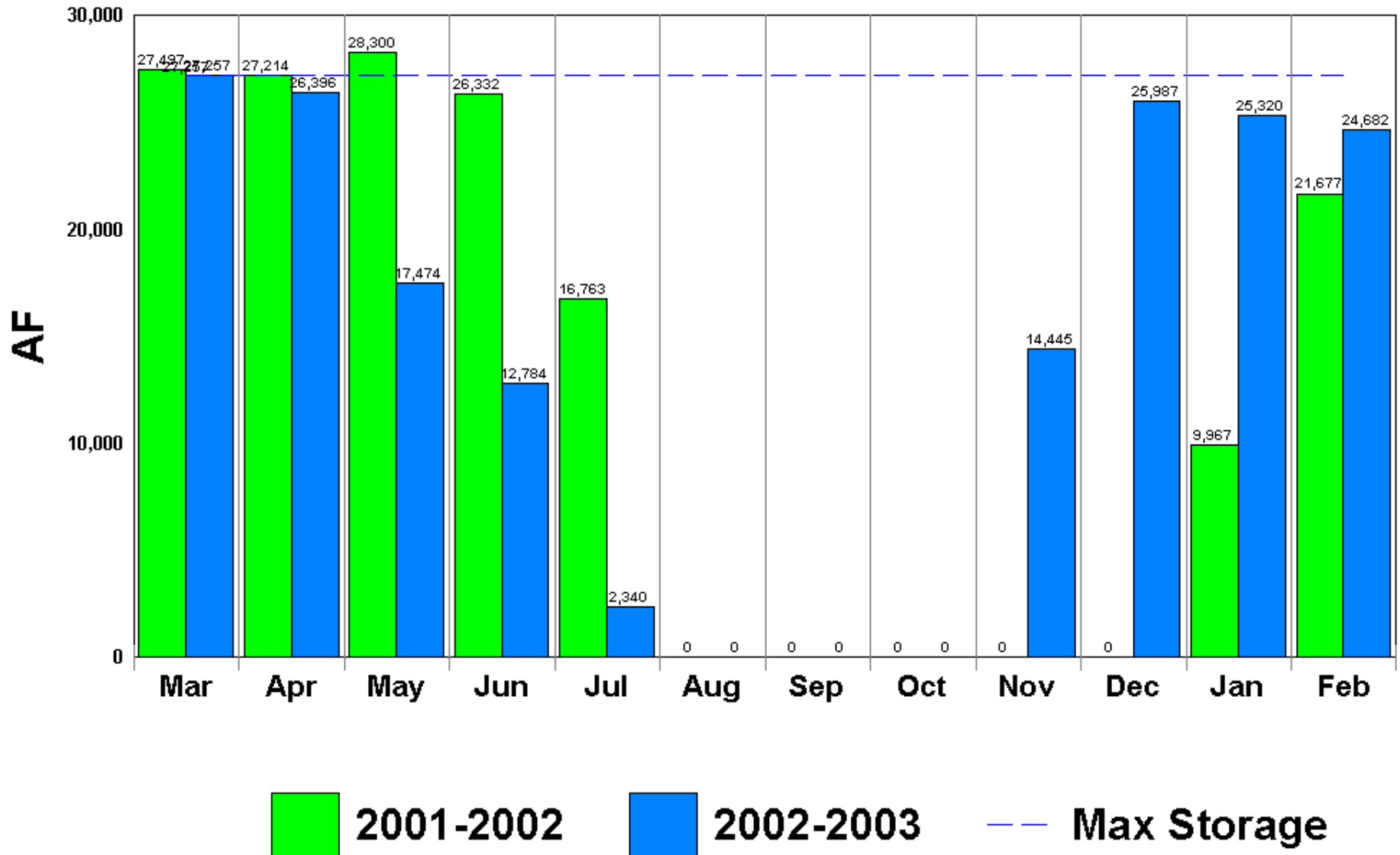
Prewitt Reservoir

(Agricultural)



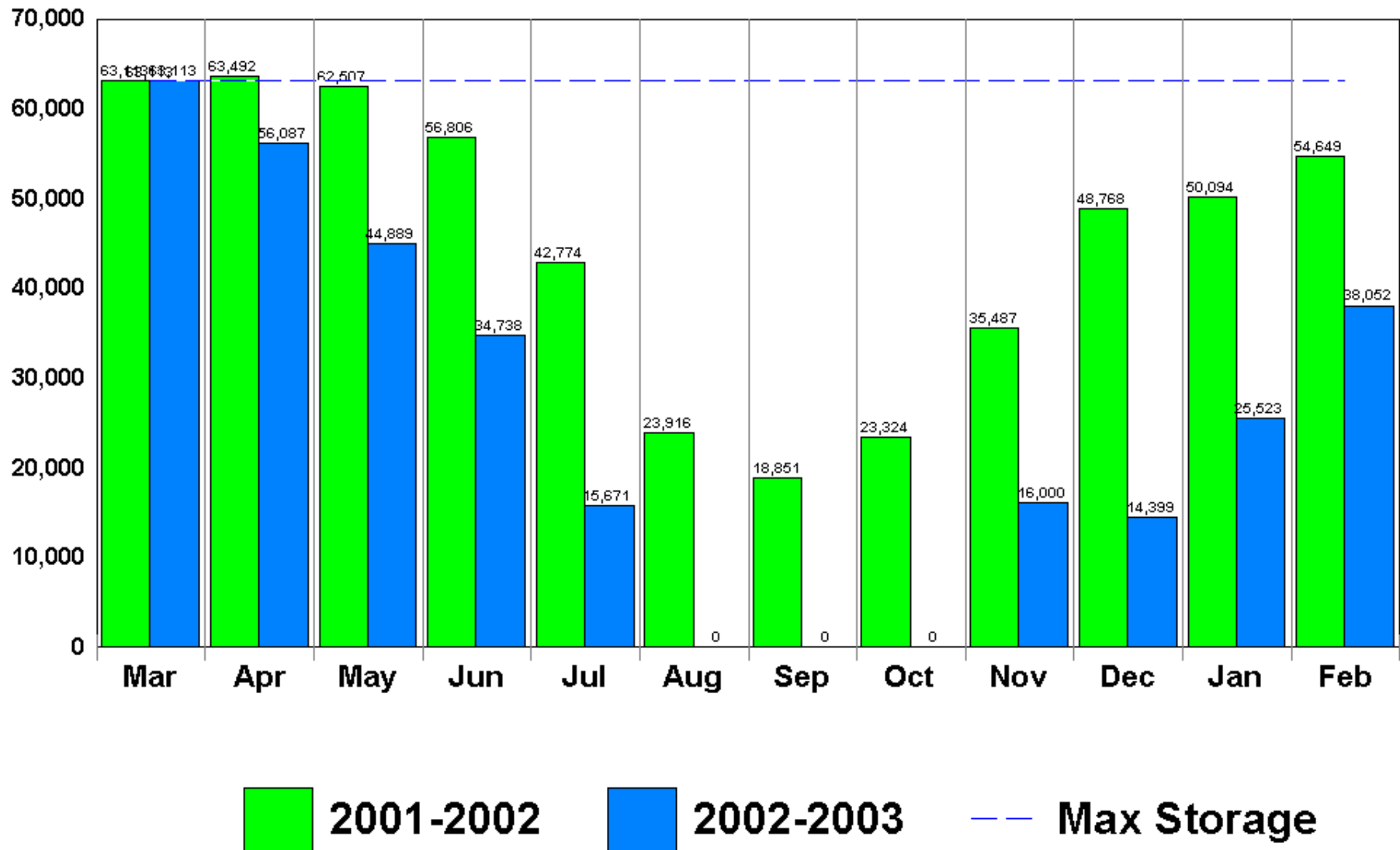
Jackson Reservoir

(Agricultural)



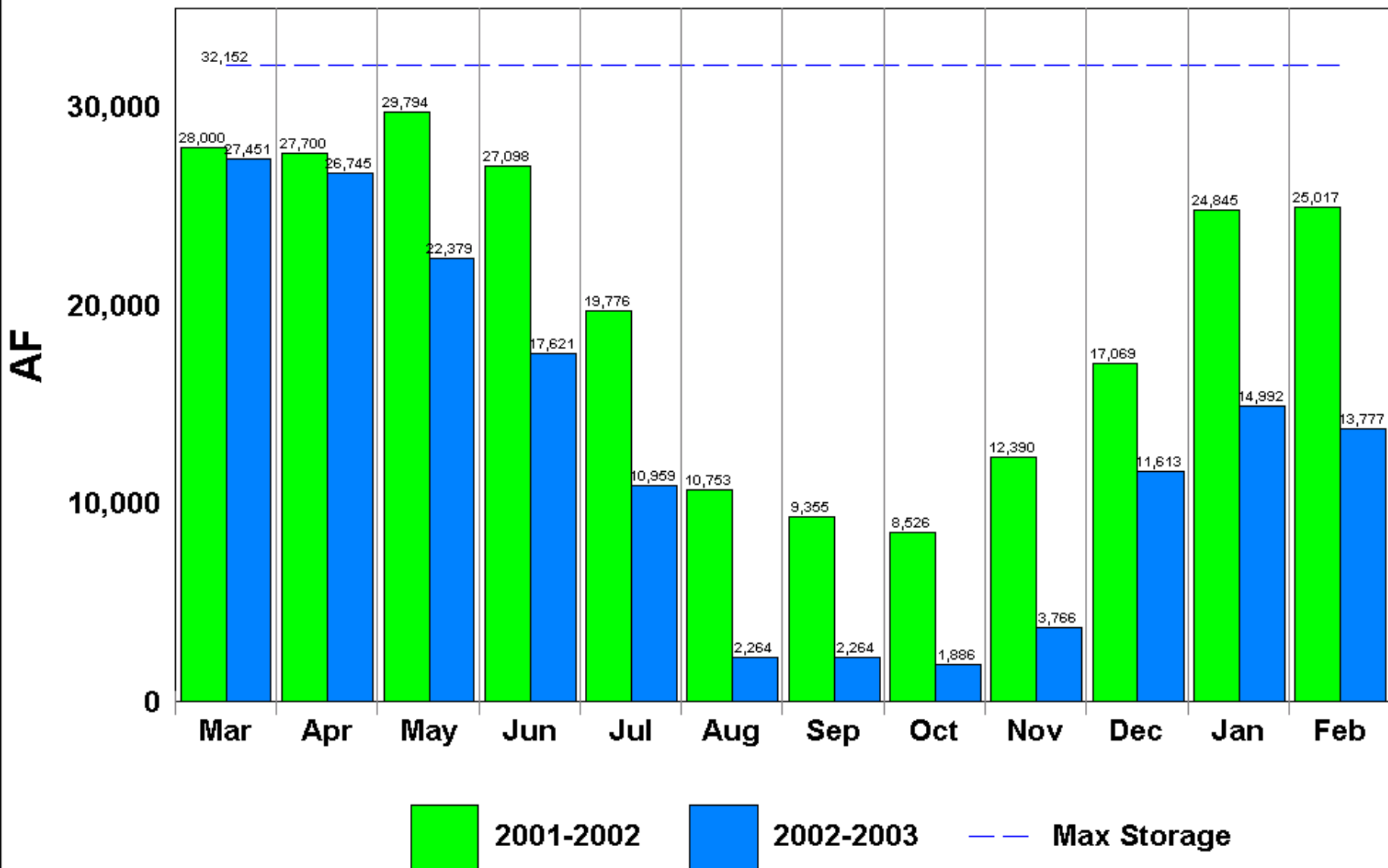
Riverside Reservoir

(Agricultural)



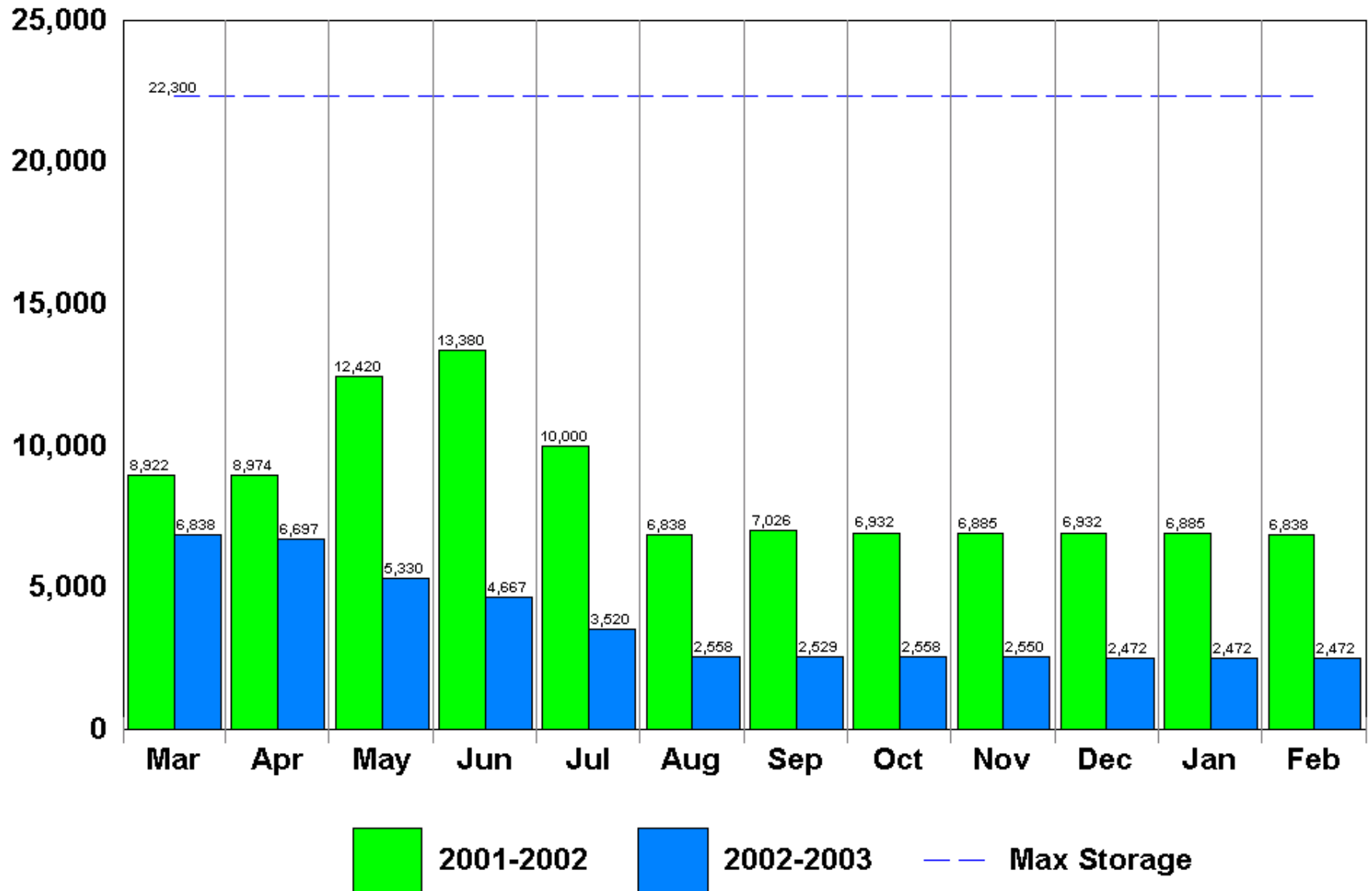
Barr Lake

(Agricultural)



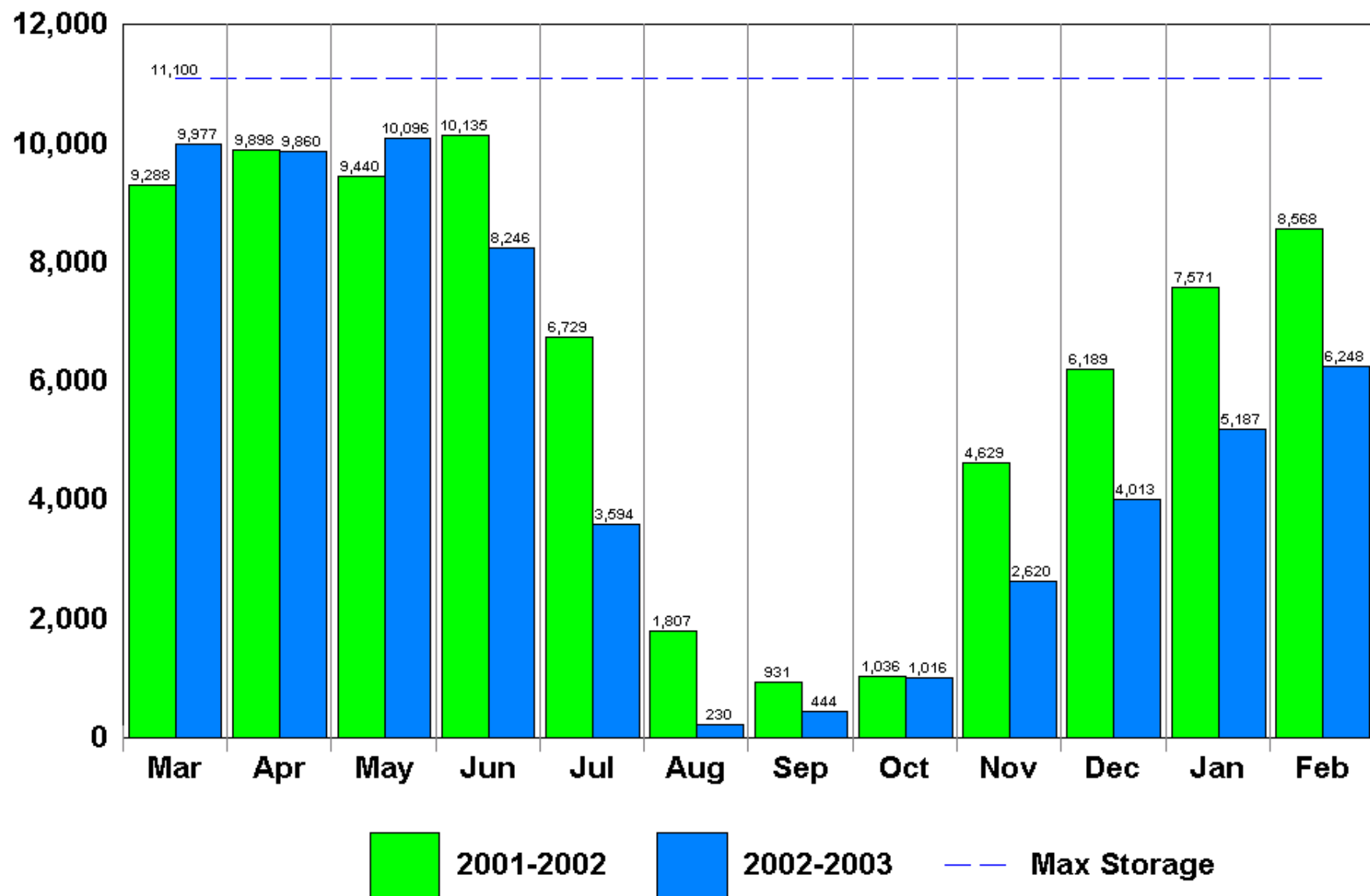
Cobb Lake

(Agricultural)



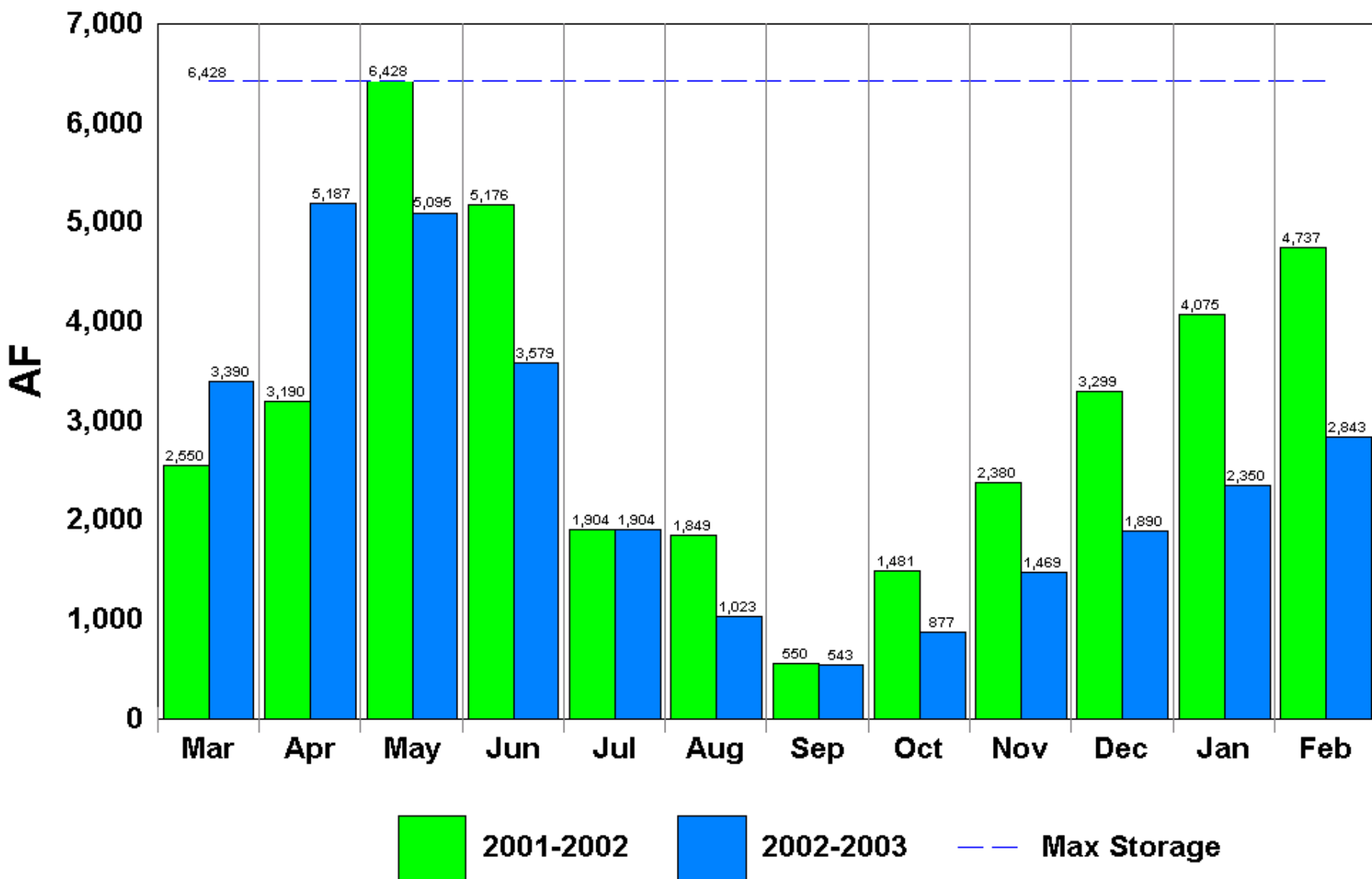
Fossil Creek Reservoir

(Agricultural)



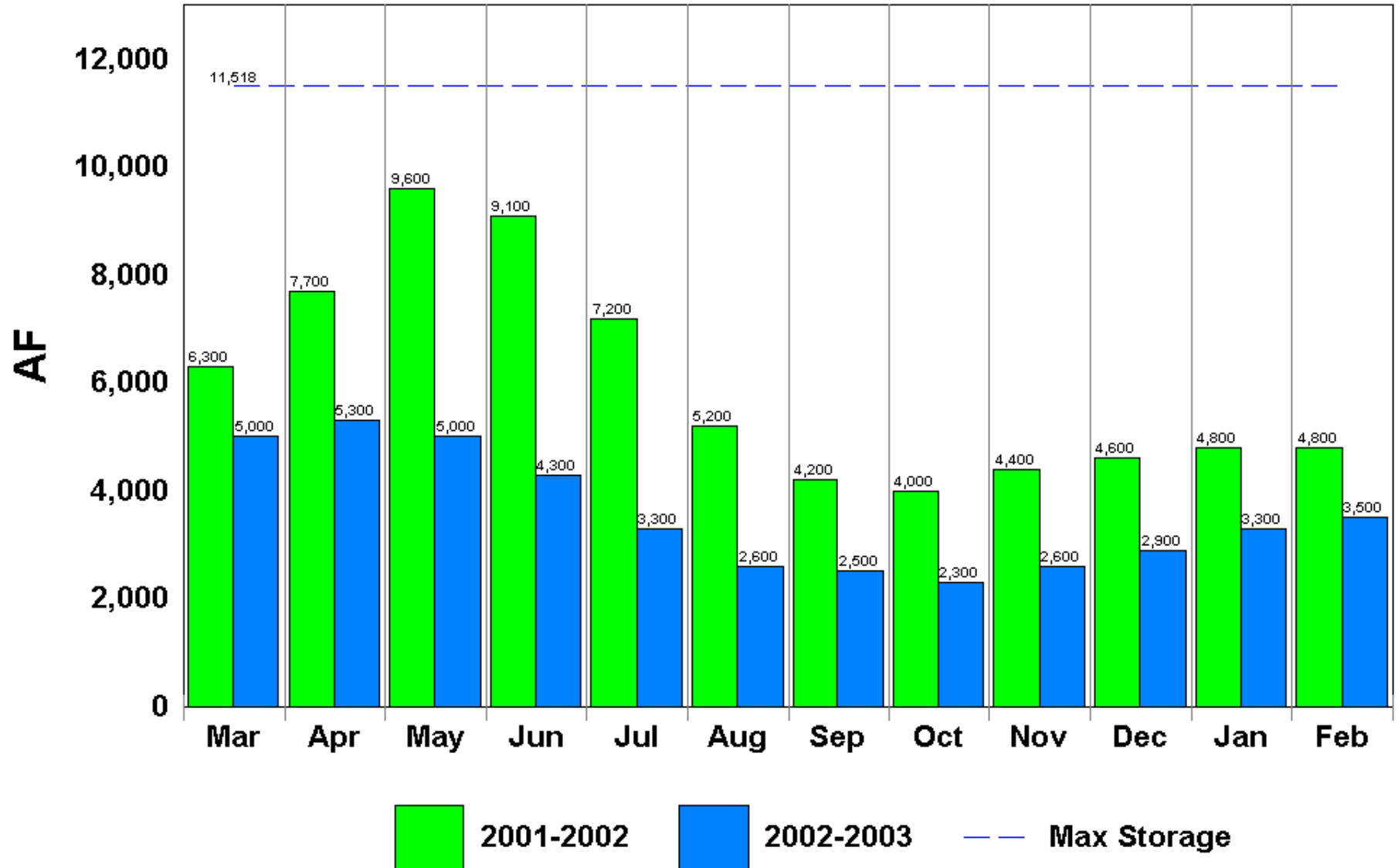
Halligan Reservoir

(Agricultural)



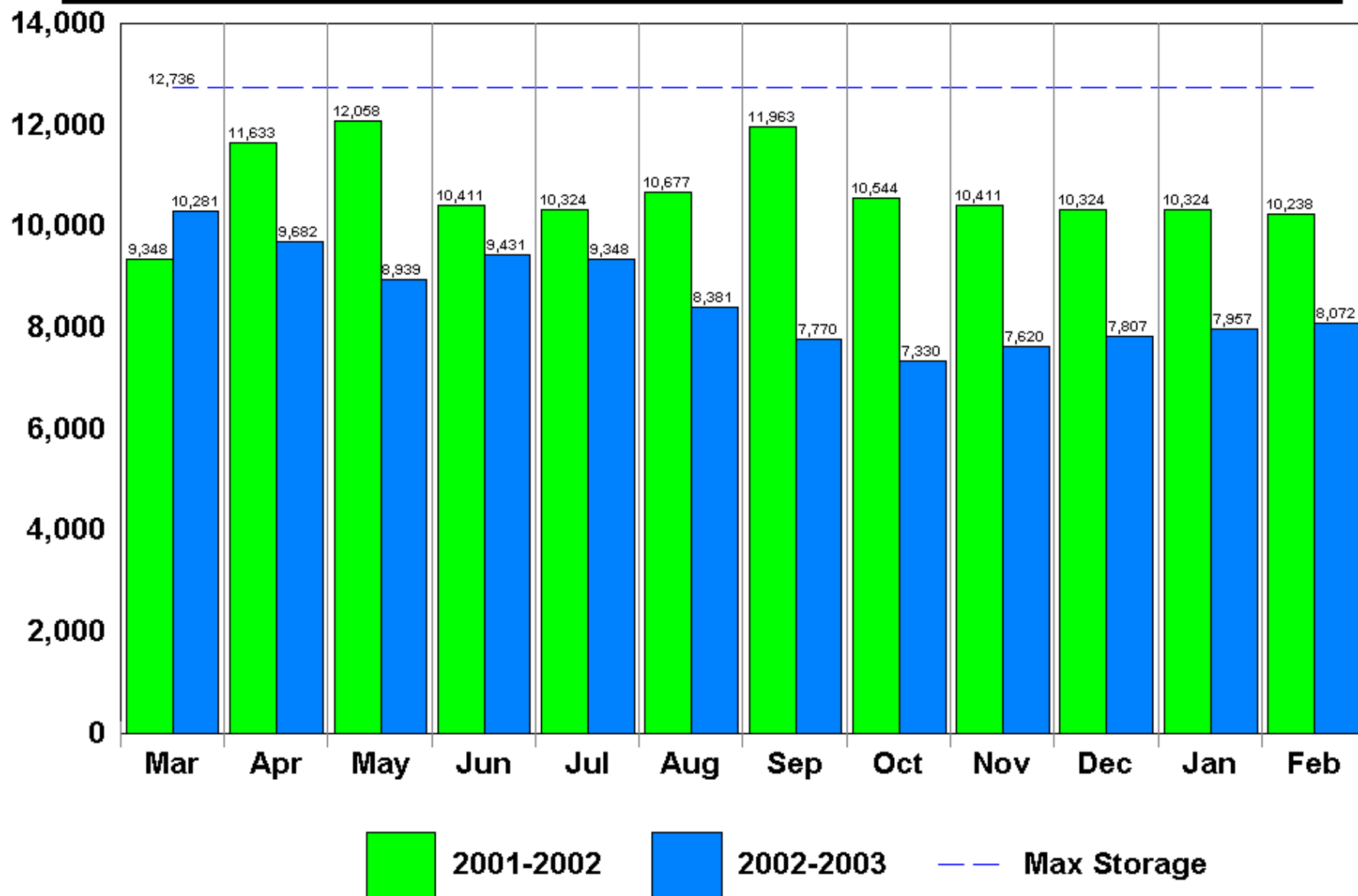
Marshall Lake

(Agricultural)



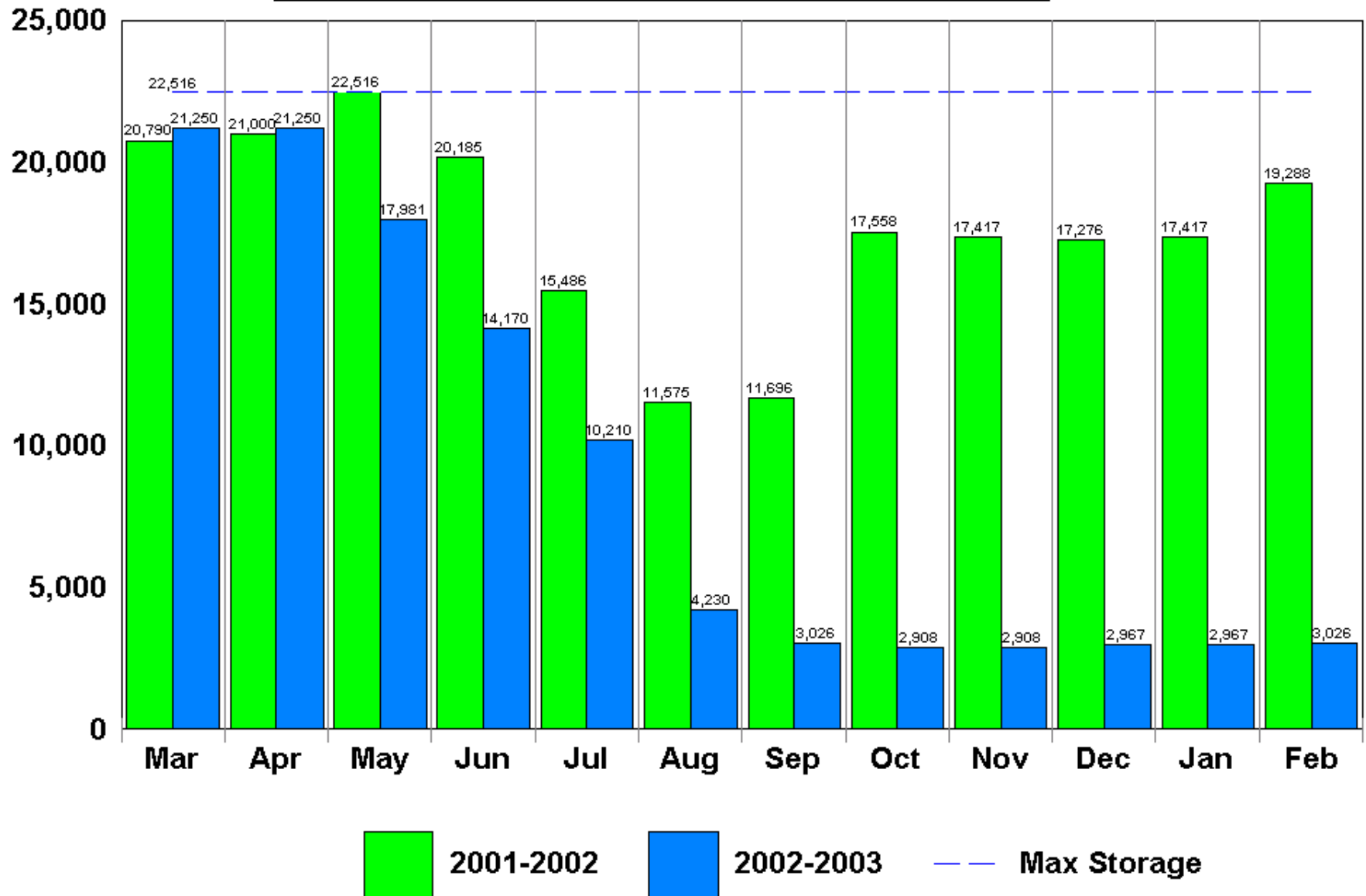
Loveland Greeley Reservoir

(Agricultural)



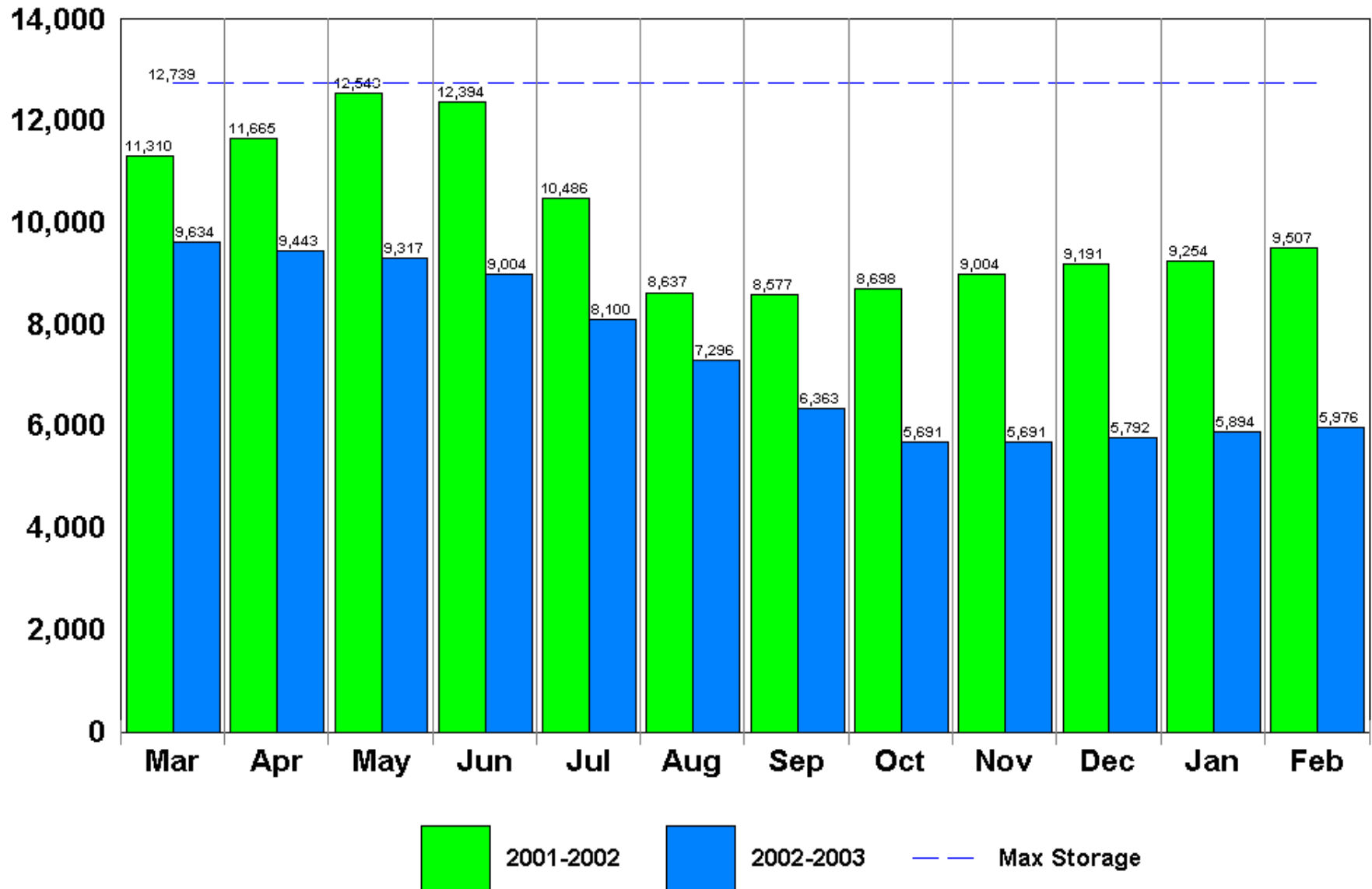
Milton Reservoir

(Agricultural)



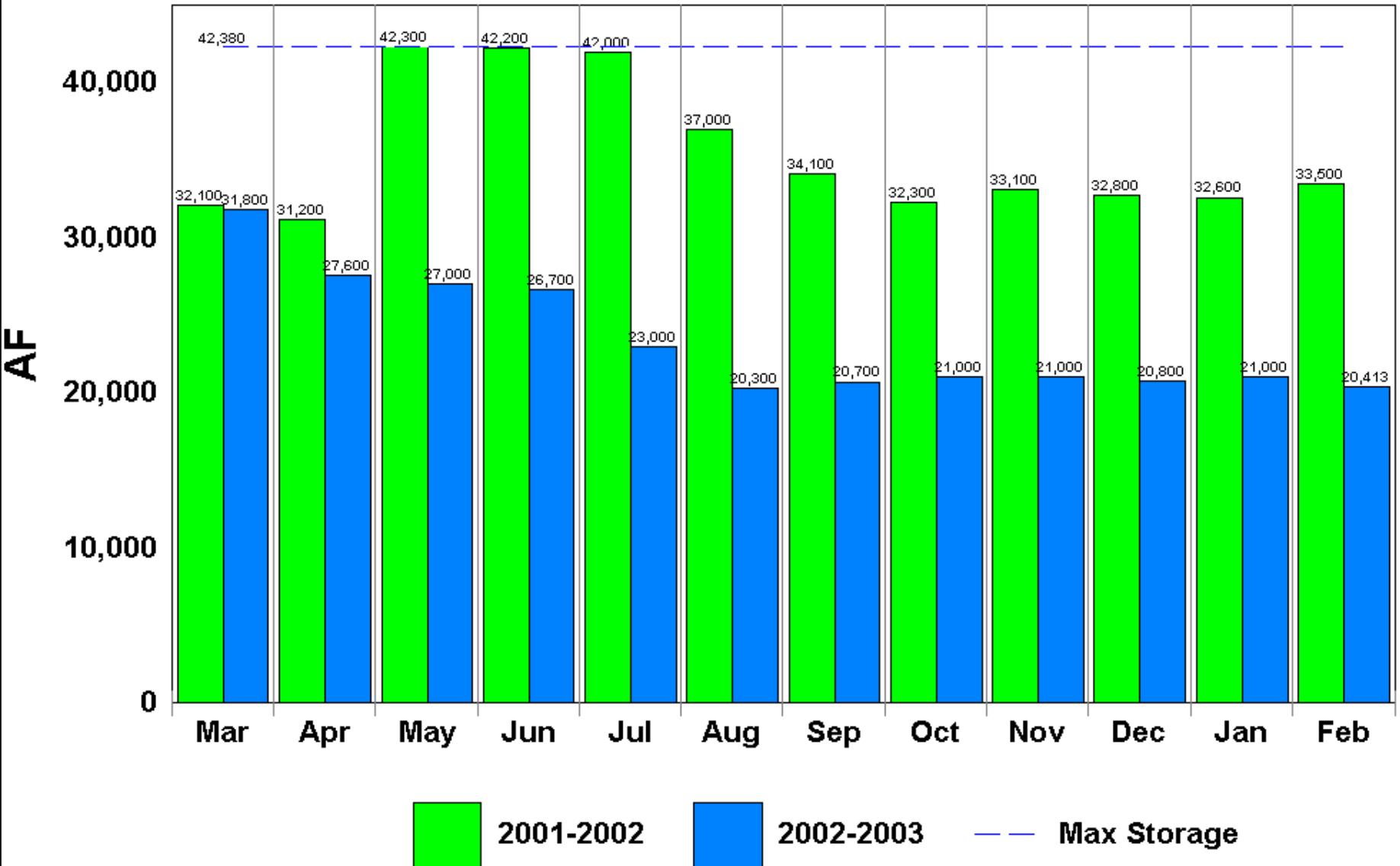
Union Reservoir

(Agricultural)



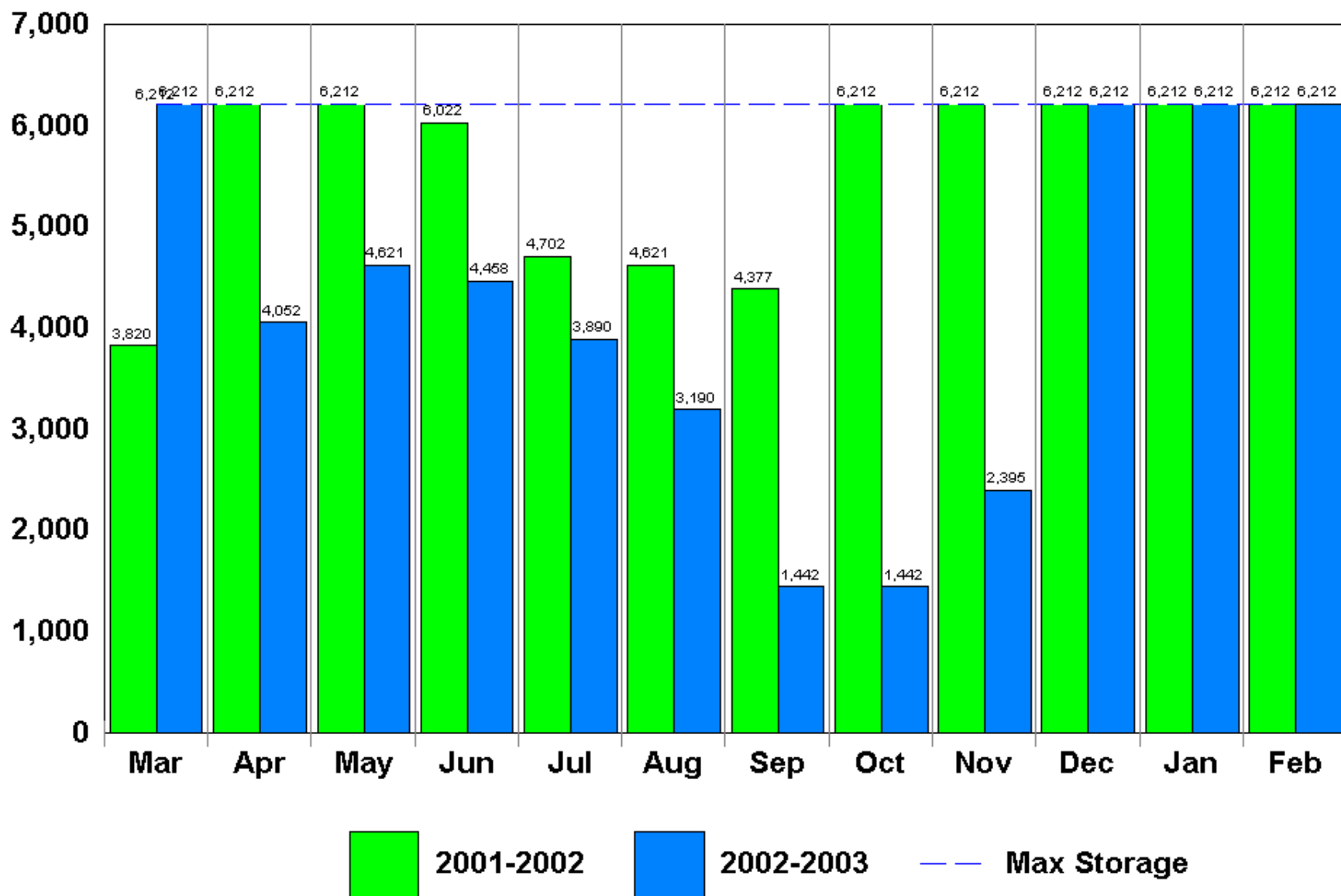
Standley Lake

(Agricultural)



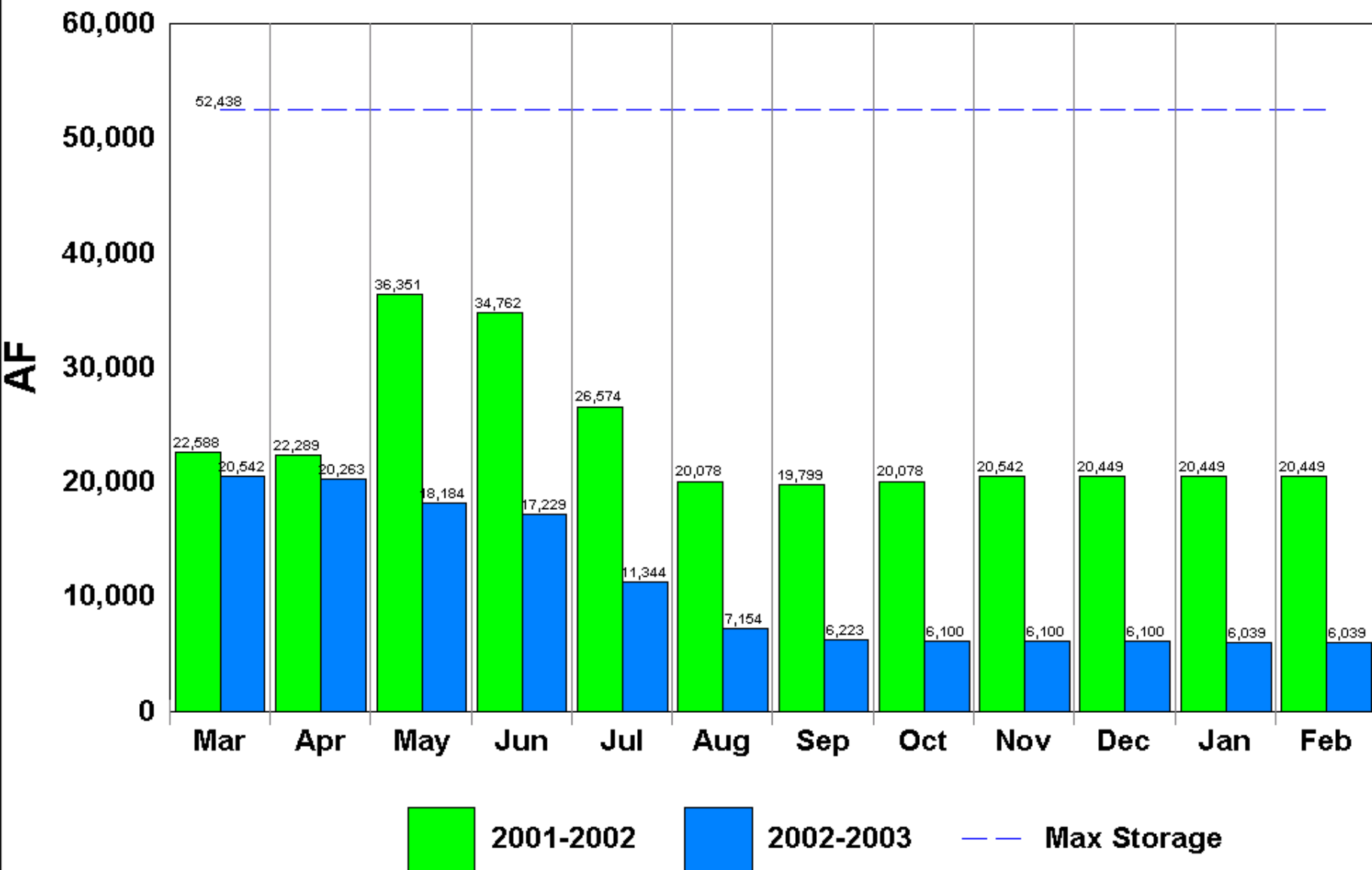
Lower Latham Reservoir

(Agricultural)



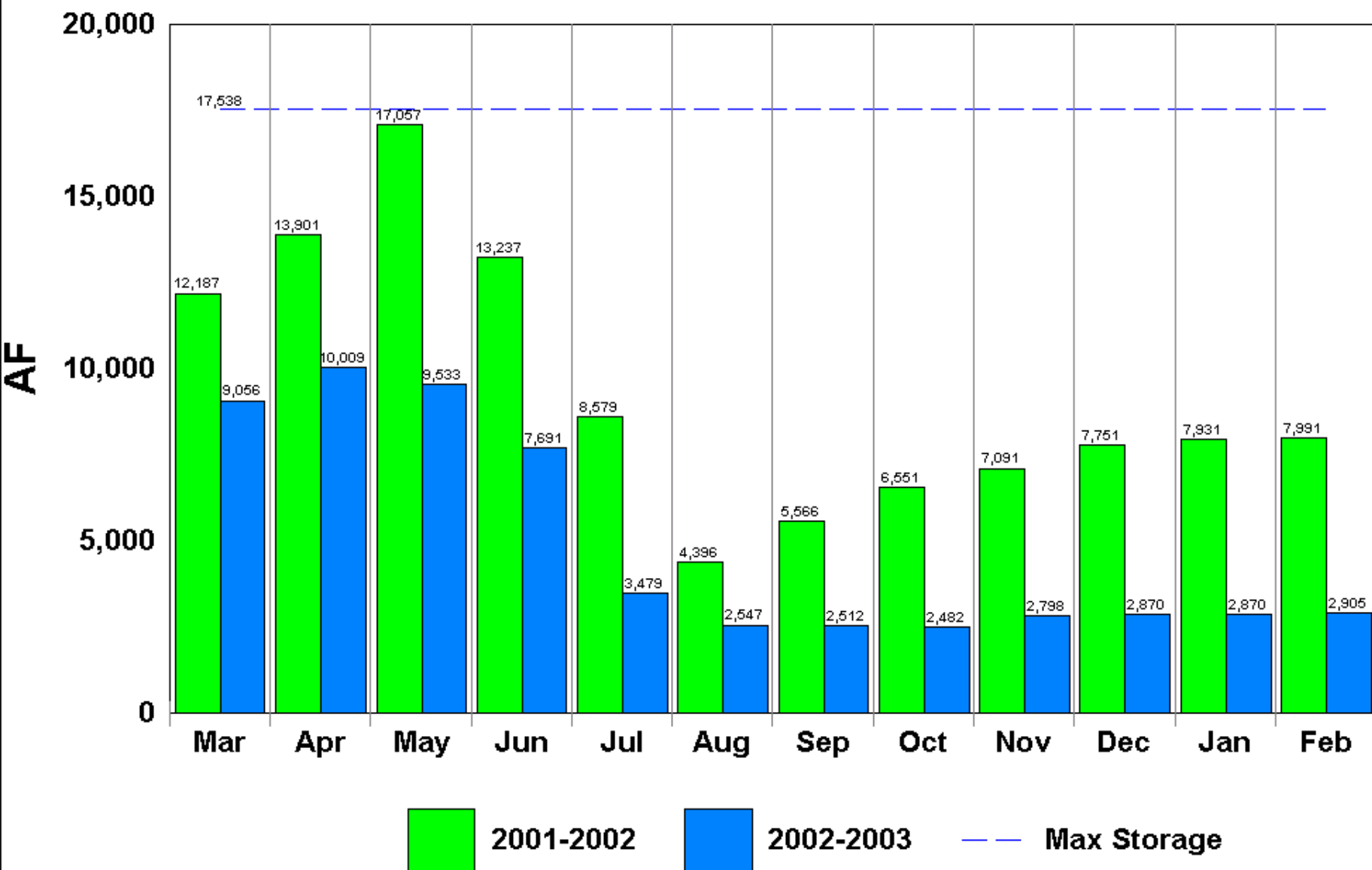
Boyd Lake

(Agricultural)



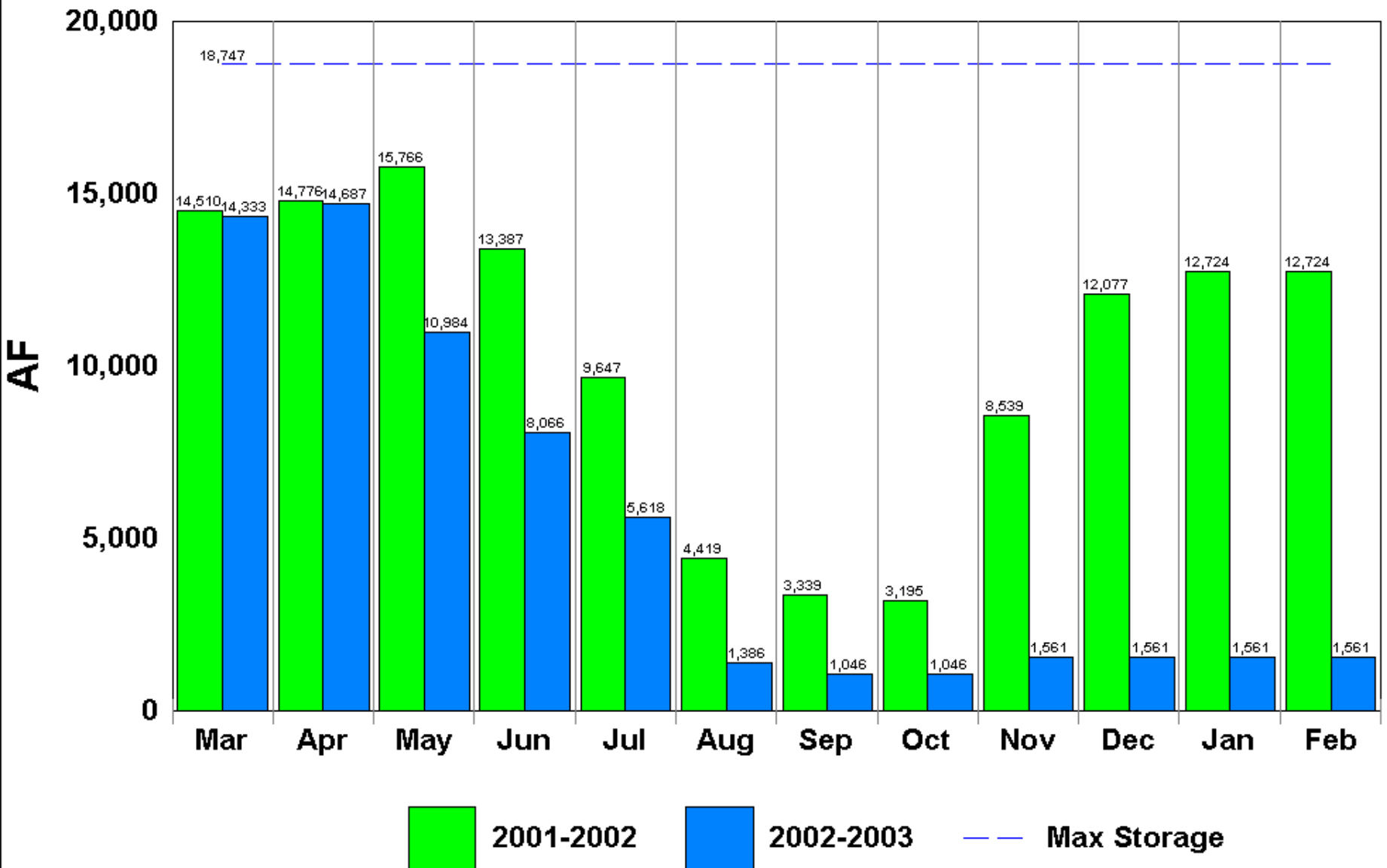
Windsor Reservoir

(Agricultural)



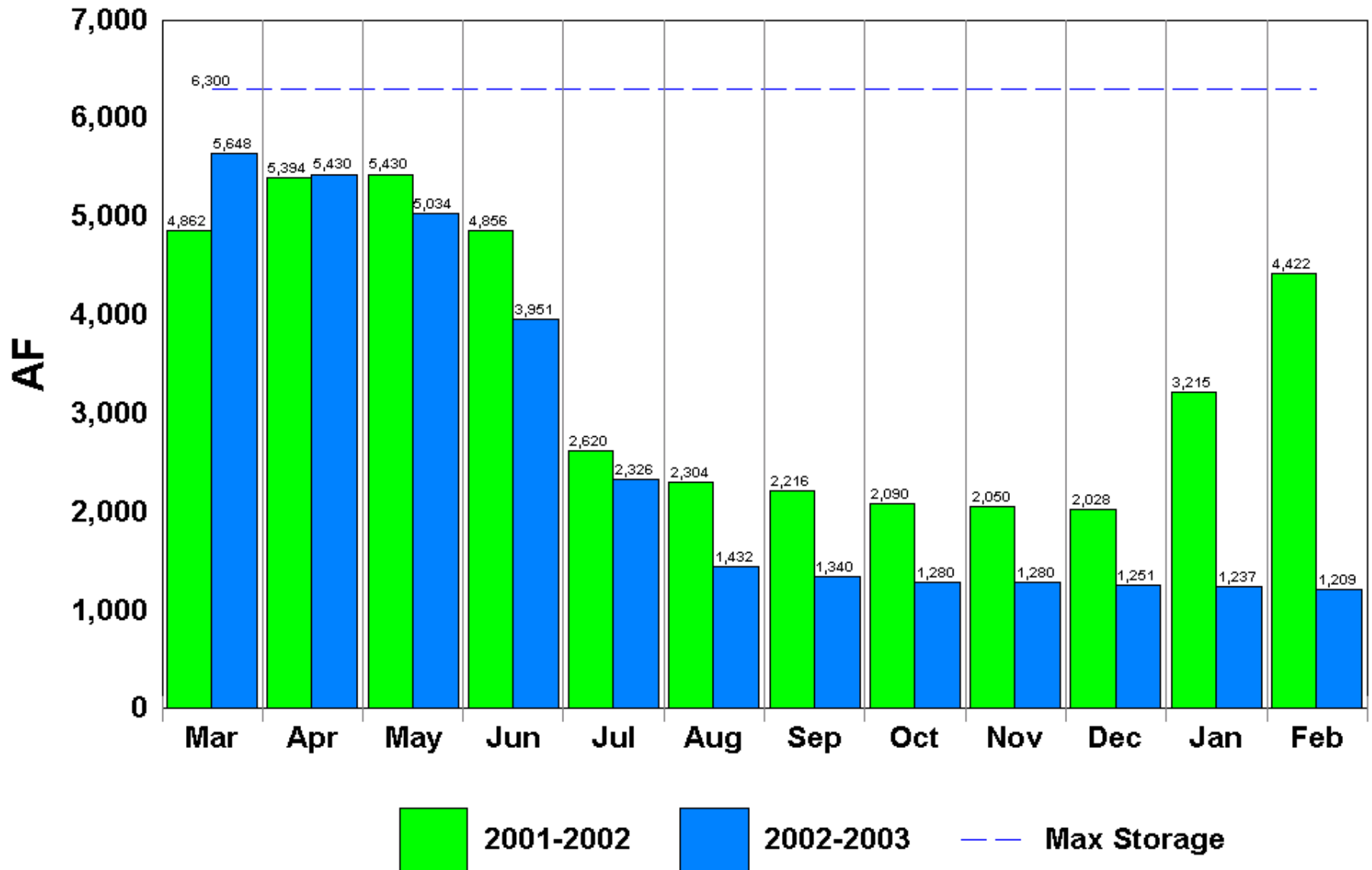
Horse Creek Reservoir

(Agricultural)



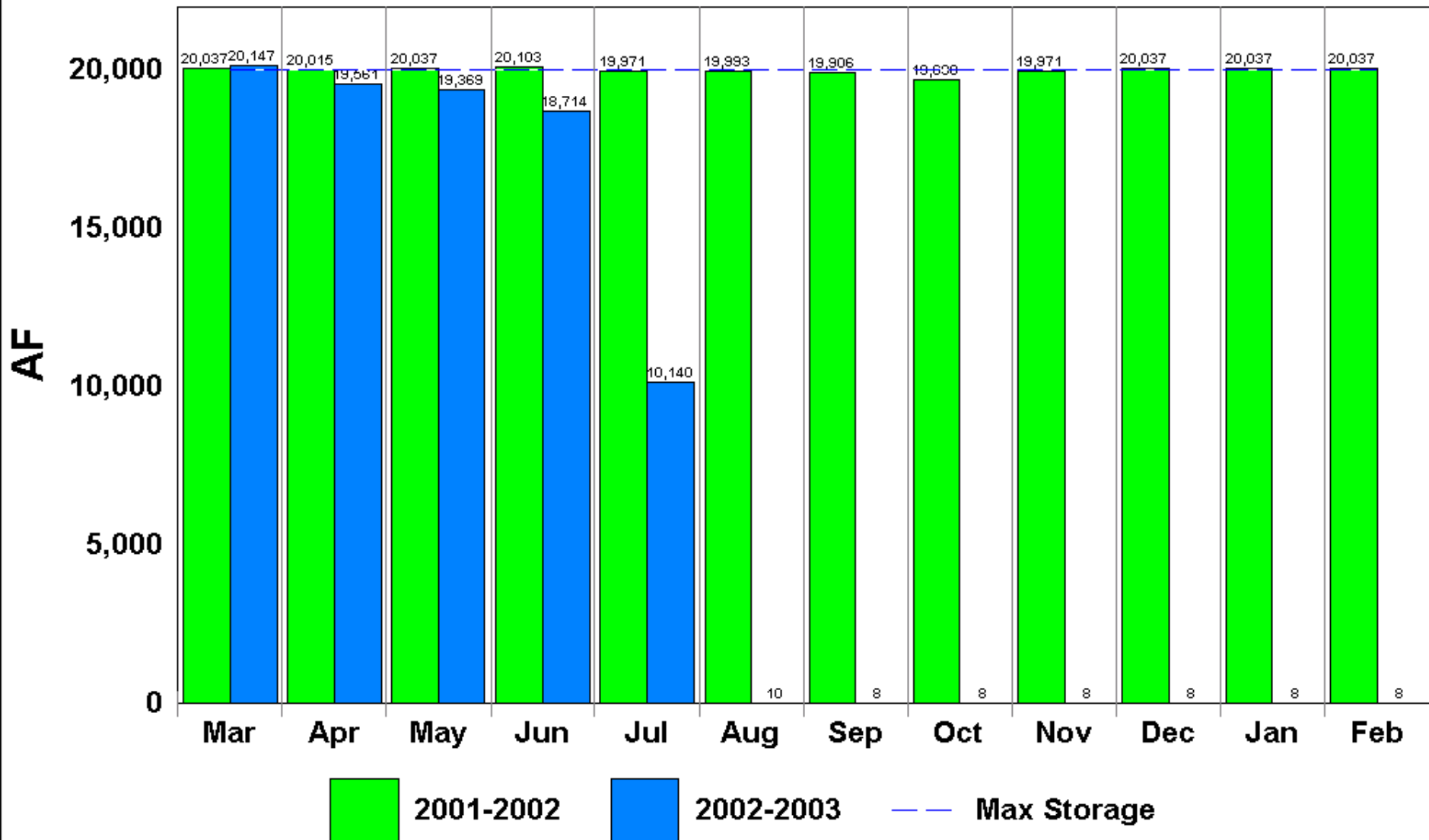
Prospect Reservoir

(Agricultural)



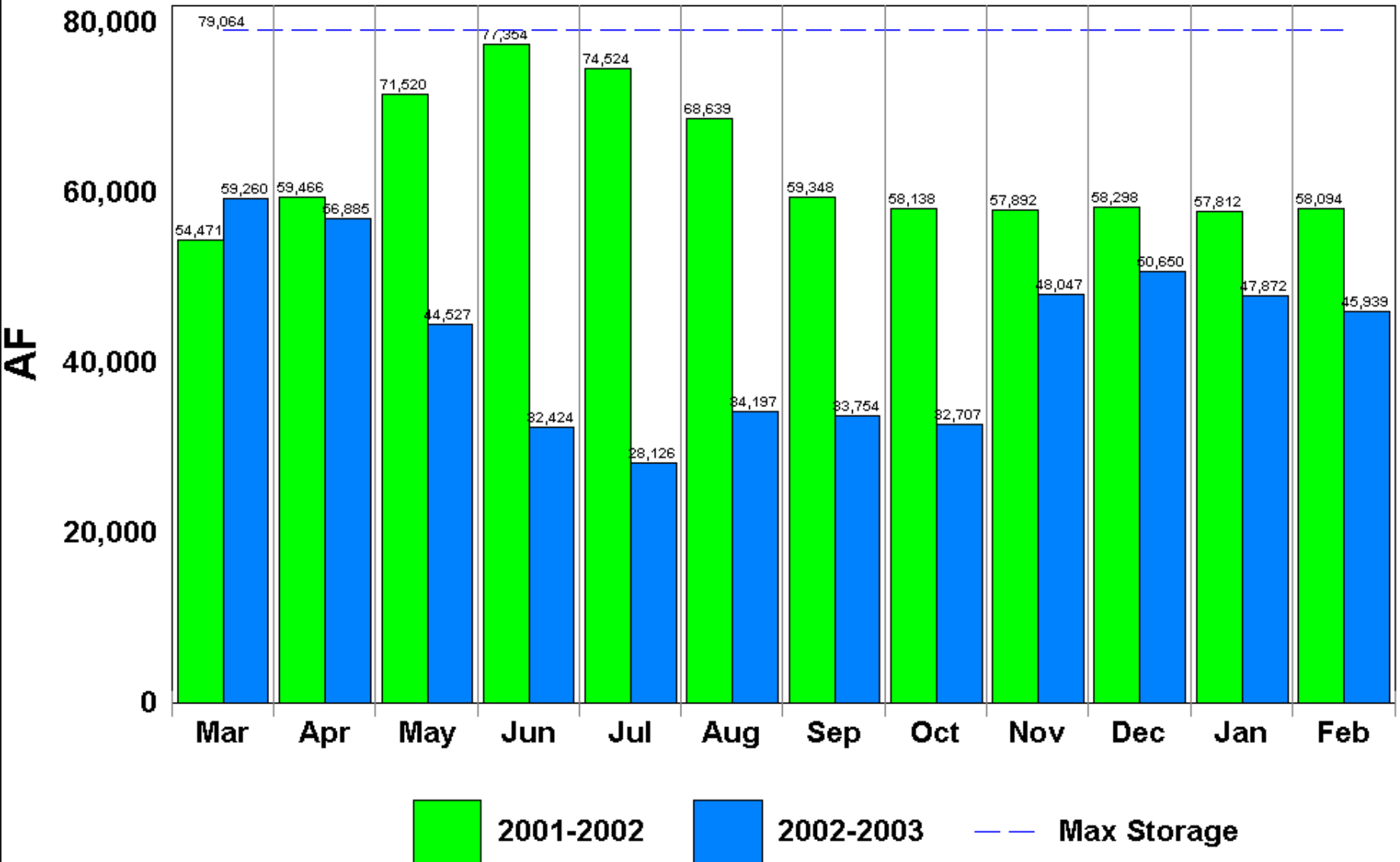
Antero Reservoir

(Municipal)



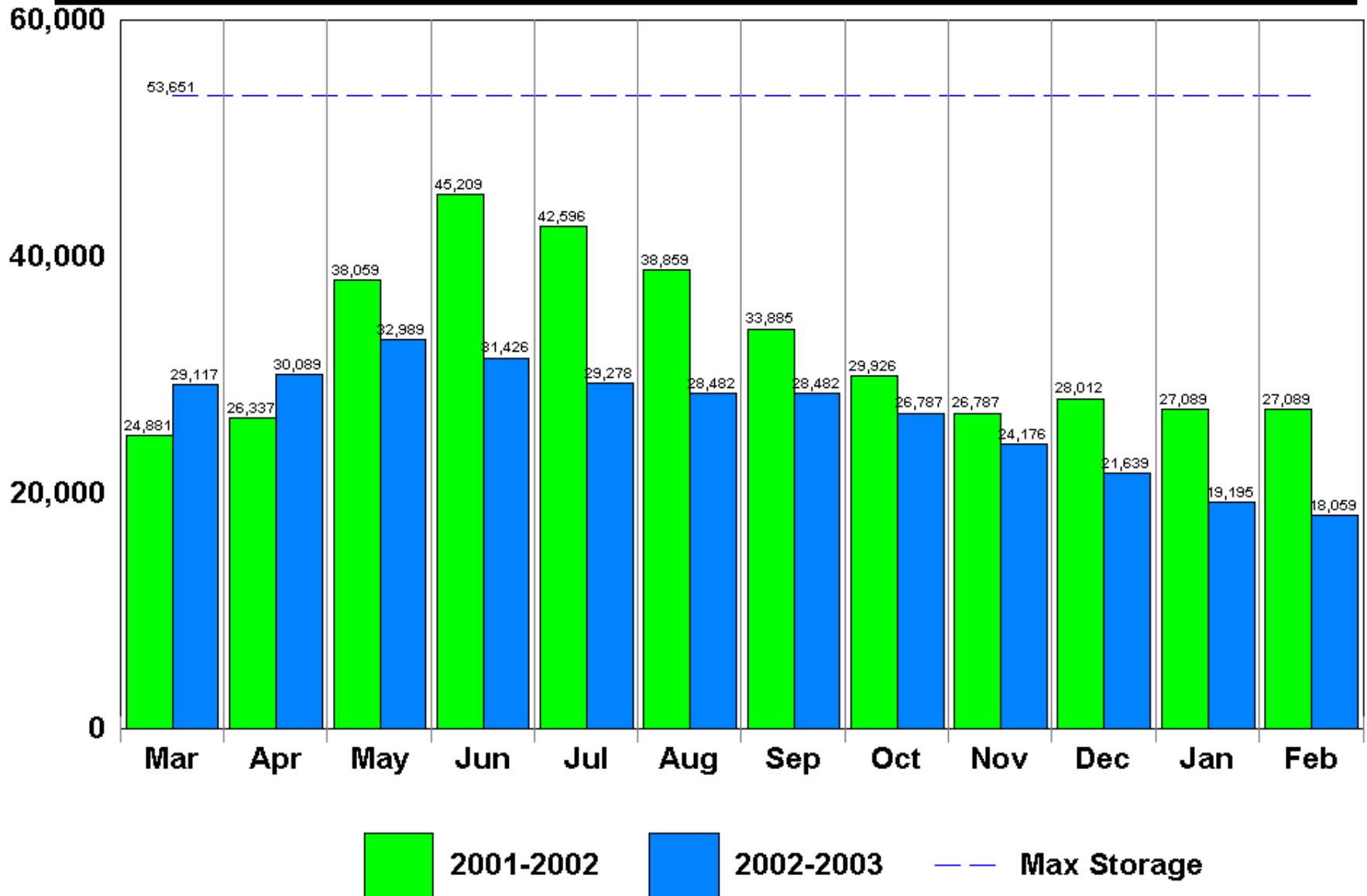
Cheesman Reservoir

(Municipal)



Spinney Mountain Reservoir

(Municipal)





Temporary pumps at Chatfield Reservoir for Denver storage water recovery.