

**GROUND WATER LEVELS  
in the  
SOUTHERN HIGH PLAINS  
DESIGNATED GROUND WATER BASIN**

**2014**



**COLORADO**

**Division of Water Resources**

Department of Natural Resources

By  
Kevin C. Donegan

John W. Hickenlooper  
Governor

Mike King  
Executive Director

Dick Wolfe  
State Engineer

Matthew A. Sares  
Project Manager

## Water Level Measurements in the Southern High Plains Designated Ground Water District 2014

This report contains the basic ground water level data collected from wells in the Southern High Plains Designated Basin. Acquisition and publication of this information is a cooperative effort between the well owners, Southern High Plains Ground Water Management District (SHPGWMD) and the Colorado Division of Water Resources (DWR). The SHPGWMD has historically obtained the water levels, but starting this year most of the water levels will be measured by DWR staff. Help from Don Wood and Max Smith of the SHPGWMD during this transition was greatly appreciated. The project is part of a statewide ground water level monitoring program funded by Senate Bill 200 (1987 legislative session). This legislation directed that a portion of the fees collected for water well permit applications be used for the establishment of a program to monitor water level trends throughout the state.

Six distinct aquifers or aquifer combinations are present within the Southern High Plains Designated Ground Water Basin. These include unconsolidated alluvium, Ogallala, Dakota, Cheyenne, undifferentiated Dakota/Cheyenne and the Dockum aquifer. A stratigraphic chart is included in this report to show the relative age and geologic relationship of these aquifers. The majority of the wells in the basin are completed in the Ogallala, Dakota/Cheyenne, or Dockum aquifers. In general, wells in the southeast portion of the basin are completed in the Ogallala and Dockum aquifers while those in the northwest portion of the basin are completed in the Dakota and/or Cheyenne aquifers. Up until 2009 these aquifer units were administered separately. On June 30, 2009, the Colorado Ground Water Commission accepted amended Rule 5.2.3 for the Southern High Plains Designated Ground Water Basin so that all of the aquifers identified above can be administered as a single geo-hydraulic system.

A total of 63 static water levels were measured and recorded during March and April 2014. The following map shows the location and designation of these wells. A new numbering system for the wells was launched this year. The map represents the well's new name with SHP removed for spacing purposes. Due to a dry winter and early spring warmth, many wells were pumping during the collection period. Water levels were not measured in wells that were pumping. Tabular data are presented for each well for the previous ten years. Graphical data are presented for the entire period of record. Analyses of changes in the water level in the aquifer are complicated by unknown pumping schedules. The table below summarizes some observations gleaned from the data by aquifer.

Aquifer	Water Level Range (ft below ground)	10-Year Average Trend (ft)	Comment
Ogallala	94 to 240	-2 to -54	Majority of declines <15 ft
Dakota/Cheyenne	57 to 304	+4 to -60	Majority of declines <15 ft
Dockum	25 to 251	+2 to -50	Majority of declines <15 ft

Copies of this report can be purchased from the Office of the State Engineer, Records Section, 1313 Sherman St., Room 821, Denver, CO 80203, (303) 866-3581. Additionally, digital versions of this report, in Adobe PDF format, may be viewed or downloaded from the Division's website, [http://water.state.co.us/ground\\_water/Pages/HydroGeo.aspx](http://water.state.co.us/ground_water/Pages/HydroGeo.aspx). The data may be accessed on the internet at the Colorado Decision Support System website <http://cdss.state.co.us> and can be exported to in number of different formats.

If you have any questions regarding ground water and the information in this report, please contact the Ground Water Information Desk at (303) 866-3587.



*Donegan, 3/18/2014*

*Two Buttes  
Prowers County, Colorado*

ERA	PERIOD	SOUTHEAST COLORADO AREA	
CENOZOIC	PLIOCENE	Ogallala Fm	
	MIOCENE	[Grey shaded area]	
	OLIGOCENE		
	EOCENE		
	PALEOCENE		
MESOZOIC	CRETACEOUS	Rocky Ford	
		Pierre Sh	
		Niobrara Fm	Smoky Hill Mbr
			Ft Hays Ls
			Codell Ss
		Colorado Grp	Carlile Sh
		Greenhorn Ls	
		Graneros Sh	
	LOWER	Dakota Ss	
		Kiowa Sh	
		Cheyenne Ss	
	JURASSIC	Morrison Fm	
Ralston Creek Fm			
TRIASSIC	Dockum Gp		

Bedrock Aquifers of Southeast Colorado  
(yellow – sandstone dominated; blue-limestone dominated)

THIS PAGE INTENTIONALLY BLANK



THIS PAGE INTENTIONALLY BLANK



## SOUTHERN HIGH PLAINS

**Well Name:** SHP-01 BLAKE, JERREL

**Owner:** BLAKE, JERREL

**Permit #:** 10437 - F - **Location #:** SC02504211BC

**USGS Site ID:**

**Division:** 2 **Water District:** 67 **County:** PROWERS

**Location:** Q160 Q40 Q10 Section Twnshp Range PM Distance from section lines:  
 NW SW 11 25 S 42 W S **From N/S line:** **From E/W line:**

**UTM Coordinates (NAD83):** **Northing (UTM y):** 4198297.3 **Easting (UTM x):** 754322.0 *User supplied*

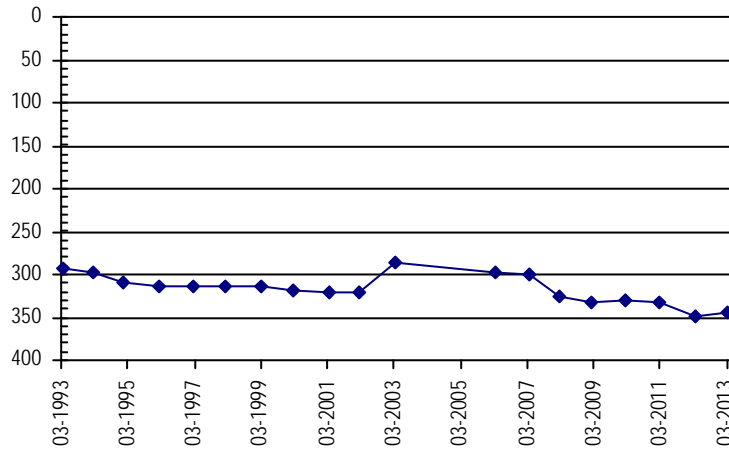
**Latitude/Longitude (decimal degrees):** 37.896688 -102.107664

**Surface Elevation (ft):** 3659 **Top Perforated Interval (ft):** **Base of grout (ft):** **Water Level Change**  
**Well depth (ft):** 600 **Bottom Perforated Interval (ft):** **1 year:**  
**Aquifer(s):** DAKOTA **5 year:**  
**10 year:**

**Measurements from last 10 years**

Date	Depth to WL (ft)	Elev of WL (ft)	Change (ft)
3/11/2006	298.80	3360.20	-11.80
3/31/2007	300.60	3358.40	-1.80
2/20/2008	326.10	3332.90	-25.50
2/9/2009	331.90	3327.10	-5.80
2/27/2010	330.00	3329.00	1.90
2/23/2011	333.00	3326.00	-3.00
3/6/2012	348.50	3310.50	-15.50
3/10/2013	345.30	3313.70	3.20
3/18/2014			

**All Historic Measurements**



**Well Name:** SHP-02 BARTH,RBT.J.

**Owner:** BARTH,RBT.J.

**Permit #:** 19211 - F - **Location #:** SC02604107BC

**USGS Site ID:**

**Division:** 2 **Water District:** 67 **County:** PROWERS

**Location:** Q160 Q40 Q10 Section Twnshp Range PM Distance from section lines:  
 NW SW 7 26 S 41 W S **From N/S line:** **From E/W line:**

**UTM Coordinates (NAD83):** **Northing (UTM y):** 4187423.1 **Easting (UTM x):** 756071.0 *User supplied*

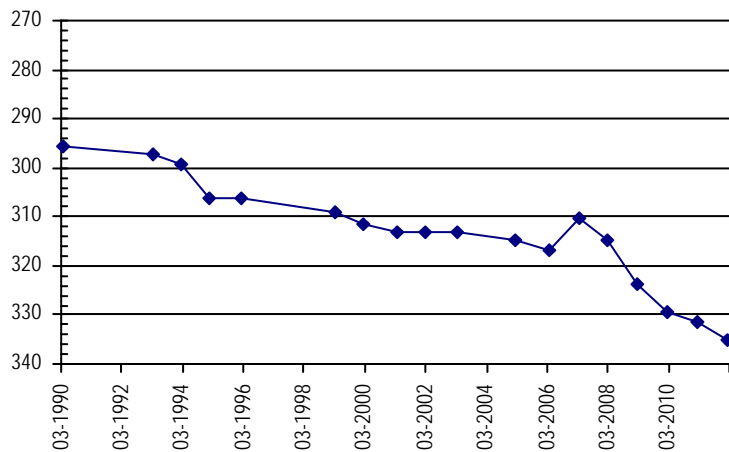
**Latitude/Longitude (decimal degrees):** 37.798314 -102.091647

**Surface Elevation (ft):** 3655 **Top Perforated Interval (ft):** **Base of grout (ft):** **Water Level Change**  
**Well depth (ft):** 630 **Bottom Perforated Interval (ft):** **1 year:**  
**Aquifer(s):** DAKOTA **5 year:**  
 CHEYENNE **10 year:**

**Measurements from last 10 years**

Date	Depth to WL (ft)	Elev of WL (ft)	Change (ft)
2/23/2005	314.80	3340.20	-1.80
3/5/2006	316.90	3338.10	-2.10
3/30/2007	310.30	3344.70	6.60
2/20/2008	314.70	3340.30	-4.40
2/11/2009	323.80	3331.20	-9.10
2/27/2010	329.50	3325.50	-5.70
2/23/2011	331.40	3323.60	-1.90
2/8/2012	335.00	3320.00	-3.60
3/10/2013			
3/18/2014			

**All Historic Measurements**





## SOUTHERN HIGH PLAINS

**Well Name:** **SHP-03 WEEKS RANCHES INC.** **Owner:** WEEKS RANCHES INC.  
**Permit #:** 12269 - F - **Location #:** SC02704229CBB **USGS Site ID:** 373957102105800

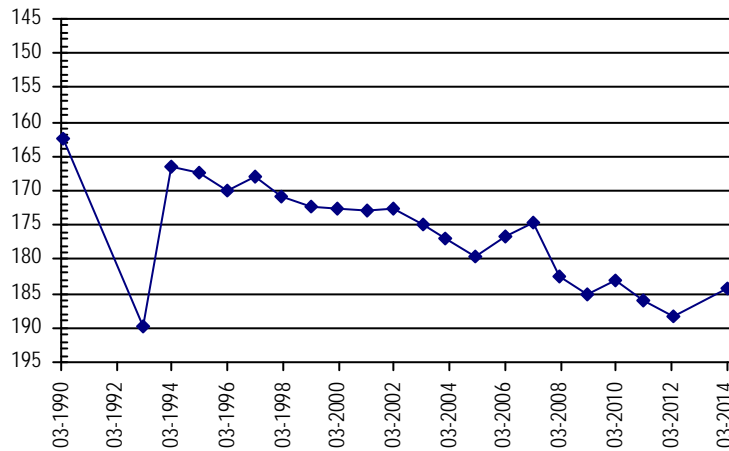
**Division:** 2 **Water District:** 67 **County:** PROWERS  
**Location:** Q160 Q40 Q10 Section Twnshp Range PM Distance from section lines:  
 SW NW NW 29 27 S 42 W S **From N/S line:** **From E/W line:**  
**UTM Coordinates (NAD83):** **Northing (UTM y):** 4172474.5 **Easting (UTM x):** 748447.6 *User supplied*  
**Latitude/Longitude (decimal degrees):** 37.665846 -102.183239

**Surface Elevation (ft):** 3826.58 **Top Perforated Interval (ft):** **Base of grout (ft):** **Water Level Change**  
**Well depth (ft):** 208 **Bottom Perforated Interval (ft):** **1 year:**  
**Aquifer(s):** OGALLALA **5 year:** 0.67  
**10 year:** -7.23

### Measurements from last 10 years

Date	Depth to WL (ft)	Elev of WL (ft)	Change (ft)
1/29/2004	177.10	3649.48	-2.10
2/22/2005	179.70	3646.88	-2.60
3/4/2006	176.60	3649.98	3.10
3/30/2007	174.70	3651.88	1.90
2/21/2008	182.40	3644.18	-7.70
2/11/2009	185.00	3641.58	-2.60
2/27/2010	183.00	3643.58	2.00
2/23/2011	186.00	3640.58	-3.00
3/6/2012	188.30	3638.28	-2.30
3/10/2013			
3/18/2014	184.33	3642.25	

### All Historic Measurements



**Well Name:** **SHP-04 NUSSER,D.** **Owner:** NUSSER,D.  
**Permit #:** 21218 - F - **Location #:** SC02804304ADD1 **USGS Site ID:** 373816102152001

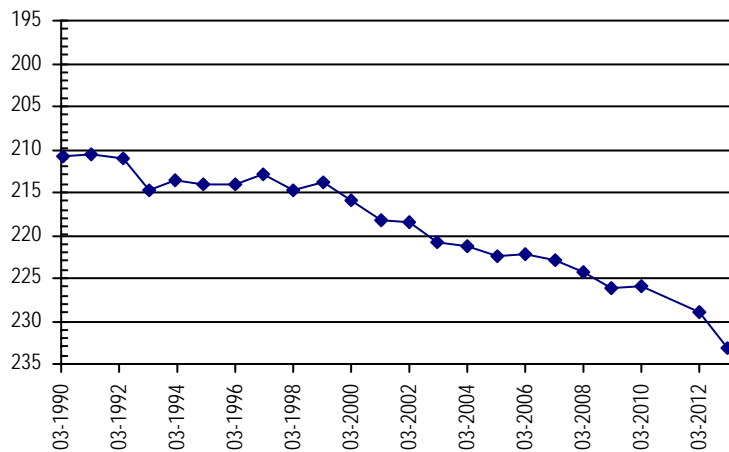
**Division:** 2 **Water District:** 67 **County:** PROWERS  
**Location:** Q160 Q40 Q10 Section Twnshp Range PM Distance from section lines:  
 NE SE SE 4 28 S 43 W S **From N/S line:** **From E/W line:**  
**UTM Coordinates (NAD83):** **Northing (UTM y):** 4169492.9 **Easting (UTM x):** 726039.1 *GPS*  
**Latitude/Longitude (decimal degrees):** 37.644791 -102.437973

**Surface Elevation (ft):** 3936.65 **Top Perforated Interval (ft):** **Base of grout (ft):** **Water Level Change**  
**Well depth (ft):** 292 **Bottom Perforated Interval (ft):** **1 year:**  
**Aquifer(s):** OGALLALA **5 year:**  
**10 year:**

### Measurements from last 10 years

Date	Depth to WL (ft)	Elev of WL (ft)	Change (ft)
2/28/2004	221.30	3715.35	-0.50
3/2/2005	222.50	3714.15	-1.20
2/18/2006	222.20	3714.45	0.30
3/23/2007	222.80	3713.85	-0.60
2/4/2008	224.30	3712.35	-1.50
2/7/2009	226.20	3710.45	-1.90
2/18/2010	225.90	3710.75	0.30
4/13/2011			
2/8/2012	229.00	3707.65	
2/23/2013	233.10	3703.55	-4.10
3/18/2014			

### All Historic Measurements



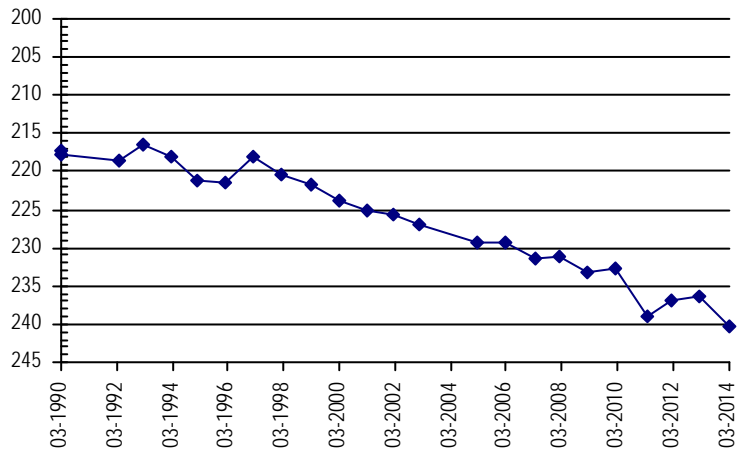
## SOUTHERN HIGH PLAINS

**Well Name:** **SHP-05 SCHNABEL, D.L.** **Owner:** SCHNABEL, D.L.  
**Permit #:** 15639 - F - **Location #:** SC02804304CA **USGS Site ID:**  
**Division:** 2 **Water District:** 67 **County:** BACA  
**Location:** Q160 Q40 Q10 Section Twnshp Range PM Distance from section lines:  
 SW NE 4 28 S 43 W S **From N/S line:** **From E/W line:**  
**UTM Coordinates (NAD83):** **Northing (UTM y):** 4142809.0 **Easting (UTM x):** 718311.9 *User supplied*  
**Latitude/Longitude (decimal degrees):** 37.406366 -102.533409  
**Surface Elevation (ft):** 3950 **Top Perforated Interval (ft):** **Base of grout (ft):** **Water Level Change**  
**Well depth (ft):** 272 **Bottom Perforated Interval (ft):** **1 year:** -4.09  
**Aquifer(s):** OGALLALA **5 year:** -7.09  
**10 year:**

### Measurements from last 10 years

Date	Depth to WL (ft)	Elev of WL (ft)	Change (ft)
2/21/2005	229.40	3720.60	-2.40
2/18/2006	229.20	3720.80	0.20
3/23/2007	231.40	3718.60	-2.20
2/4/2008	231.20	3718.80	0.20
2/6/2009	233.30	3716.70	-2.10
2/18/2010	232.80	3717.20	0.50
4/14/2011	239.00	3711.00	-6.20
2/8/2012	237.00	3713.00	2.00
2/23/2013	236.30	3713.70	0.70
3/18/2014	240.39	3709.61	-4.09

### All Historic Measurements

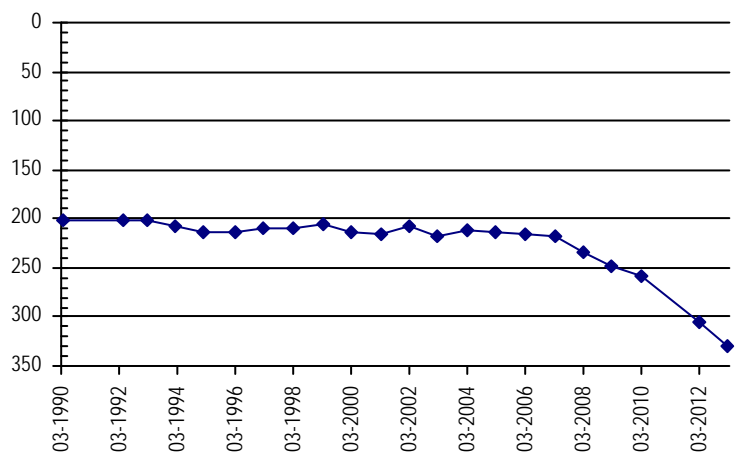


**Well Name:** **SHP-06 MEYERS, S.** **Owner:** MEYERS, S.  
**Permit #:** 9222 - RF - **Location #:** SC02804308BA **USGS Site ID:**  
**Division:** 2 **Water District:** 67 **County:** BACA  
**Location:** Q160 Q40 Q10 Section Twnshp Range PM Distance from section lines:  
 NW NE 8 28 S 43 W S **From N/S line:** **From E/W line:**  
**UTM Coordinates (NAD83):** **Northing (UTM y):** 4166578.0 **Easting (UTM x):** 739762.0 *GPS*  
**Latitude/Longitude (decimal degrees):** 37.615068 -102.283543  
**Surface Elevation (ft):** 3974 **Top Perforated Interval (ft):** **Base of grout (ft):** **Water Level Change**  
**Well depth (ft):** 510 **Bottom Perforated Interval (ft):** **1 year:**  
**Aquifer(s):** OGALLALA **5 year:**  
 DAKOTA **10 year:**

### Measurements from last 10 years

Date	Depth to WL (ft)	Elev of WL (ft)	Change (ft)
2/28/2004	212.60	3761.40	4.20
2/21/2005	214.50	3759.50	-1.90
2/18/2006	216.70	3757.30	-2.20
3/21/2007	217.70	3756.30	-1.00
2/3/2008	233.50	3740.50	-15.80
2/3/2009	247.80	3726.20	-14.30
2/14/2010	258.20	3715.80	-10.40
4/13/2011			
2/18/2012	306.20	3667.80	
2/18/2013	329.50	3644.50	-23.30
3/3/2014			

### All Historic Measurements



## SOUTHERN HIGH PLAINS

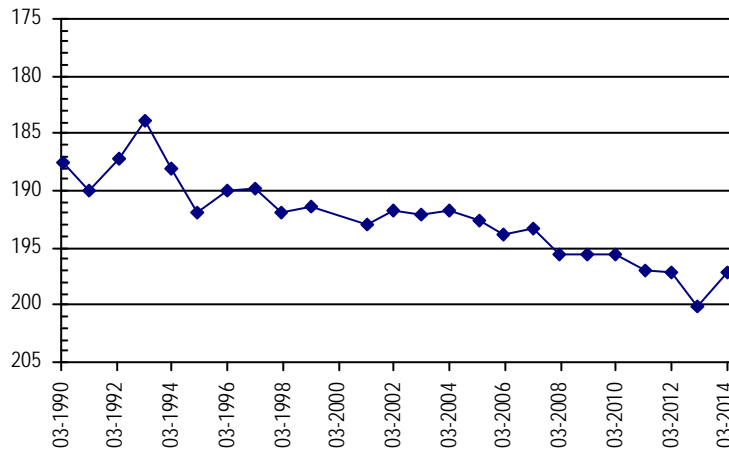
<b>Well Name:</b>	<b>SHP-07 GRIFFIN,L.&amp; OTHERS</b>	<i>Owner:</i>	GRIFFIN,L.& OTHERS
<i>Permit #:</i>	6081 - F -	<i>Location #:</i>	SC02804321BDD
<i>USGS Site ID:</i>			
<i>Division:</i>	2	<i>Water District:</i>	67
		<i>County:</i>	BACA
<i>Location:</i>	Q160 Q40 Q10 Section	Twnshp Range PM	Distance from section lines:
	NW SE SE 21	28 S 43 W S	<i>From N/S line:</i> <i>From E/W line:</i>
<i>UTM Coordinates (NAD83):</i>	<i>Northing (UTM y):</i>	4164431.8	<i>Easting (UTM x):</i> 741345.1 <i>GPS</i>
<i>Latitude/Longitude (decimal degrees):</i>		37.595332	-102.266333
<i>Surface Elevation (ft):</i>	3960	<i>Top Perforated Interval (ft):</i>	<i>Base of grout (ft):</i>
<i>Well depth (ft):</i>	242	<i>Bottom Perforated Interval (ft):</i>	
<i>Aquifer(s):</i>	OGALLALA		
	DAKOTA		

**Water Level Change**  
**1 year:** 2.91  
**5 year:** -1.69  
**10 year:** -5.49

### Measurements from last 10 years

Date	Depth to WL (ft)	Elev of WL (ft)	Change (ft)
2/28/2004	191.70	3768.30	0.40
3/2/2005	192.60	3767.40	-0.90
2/18/2006	193.80	3766.20	-1.20
3/23/2007	193.30	3766.70	0.50
2/4/2008	195.50	3764.50	-2.20
2/4/2009	195.50	3764.50	0.00
2/14/2010	195.50	3764.50	0.00
3/22/2011	197.00	3763.00	-1.50
2/18/2012	197.20	3762.80	-0.20
2/24/2013	200.10	3759.90	-2.90
3/18/2014	197.19	3762.81	2.91

### All Historic Measurements



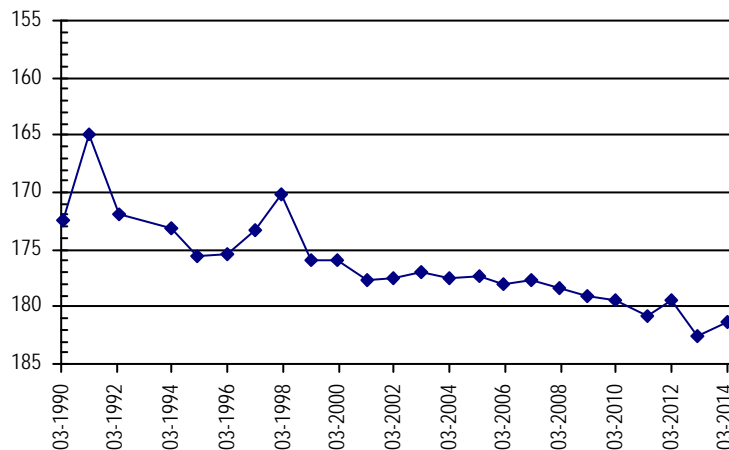
<b>Well Name:</b>	<b>SHP-08 COGBURN,A.</b>	<i>Owner:</i>	COGBURN,A.
<i>Permit #:</i>	6190 - F -	<i>Location #:</i>	SC02804329AAA
<i>USGS Site ID:</i>			
<i>Division:</i>	2	<i>Water District:</i>	67
		<i>County:</i>	BACA
<i>Location:</i>	Q160 Q40 Q10 Section	Twnshp Range PM	Distance from section lines:
	NE NE NE 29	28 S 43 W S	<i>From N/S line:</i> <i>From E/W line:</i>
<i>UTM Coordinates (NAD83):</i>	<i>Northing (UTM y):</i>	4166809.9	<i>Easting (UTM x):</i> 739750.1 <i>GPS</i>
<i>Latitude/Longitude (decimal degrees):</i>		37.617159	-102.283602
<i>Surface Elevation (ft):</i>	3940	<i>Top Perforated Interval (ft):</i>	<i>Base of grout (ft):</i>
<i>Well depth (ft):</i>	210	<i>Bottom Perforated Interval (ft):</i>	
<i>Aquifer(s):</i>	OGALLALA		
	DAKOTA		

**Water Level Change**  
**1 year:** 1.27  
**5 year:** -2.33  
**10 year:** -3.83

### Measurements from last 10 years

Date	Depth to WL (ft)	Elev of WL (ft)	Change (ft)
2/28/2004	177.50	3762.50	-0.50
3/2/2005	177.40	3762.60	0.10
2/18/2006	178.10	3761.90	-0.70
2/23/2007	177.70	3762.30	0.40
2/4/2008	178.40	3761.60	-0.70
2/7/2009	179.00	3761.00	-0.60
2/18/2010	179.50	3760.50	-0.50
4/13/2011	180.80	3759.20	-1.30
2/8/2012	179.50	3760.50	1.30
2/25/2013	182.60	3757.40	-3.10
3/21/2014	181.33	3758.67	1.27

### All Historic Measurements



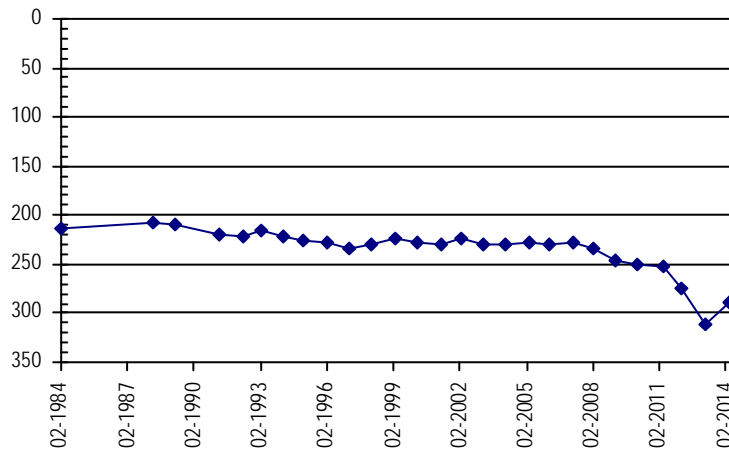
## SOUTHERN HIGH PLAINS

**Well Name:** **SHP-09 COGBURN, B.** **Owner:** COGBURN, B.  
**Permit #:** 6183 - F - **Location #:** SC02804410AAA **USGS Site ID:**  
**Division:** 2 **Water District:** 67 **County:** BACA  
**Location:** Q160 Q40 Q10 Section **Twnshp** Range **PM** Distance from section lines:  
NE NE NE 10 28 S 44 W S **From N/S line:** **From E/W line:**  
**UTM Coordinates (NAD83):** **Northing (UTM y):** 4165447.9 **Easting (UTM x):** 711616.1 *GPS*  
**Latitude/Longitude (decimal degrees):** 37.611800 -102.602485  
**Surface Elevation (ft):** 4057 **Top Perforated Interval (ft):** **Base of grout (ft):** **Water Level Change**  
**Well depth (ft):** 417 **Bottom Perforated Interval (ft):** **1 year:** 22.00  
**Aquifer(s):** CHEYENNE **5 year:** -43.30  
**10 year:** -59.90

### Measurements from last 10 years

Date	Depth to WL (ft)	Elev of WL (ft)	Change (ft)
2/28/2004	229.20	3827.80	1.30
3/1/2005	228.80	3828.20	0.40
2/17/2006	229.60	3827.40	-0.80
3/21/2007	228.60	3828.40	1.00
2/3/2008	234.60	3822.40	-6.00
2/3/2009	245.80	3811.20	-11.20
2/14/2010	249.90	3807.10	-4.10
4/13/2011	253.00	3804.00	-3.10
2/18/2012	275.40	3781.60	-22.40
2/23/2013	311.10	3745.90	-35.70
3/18/2014	289.10	3767.90	22.00

### All Historic Measurements

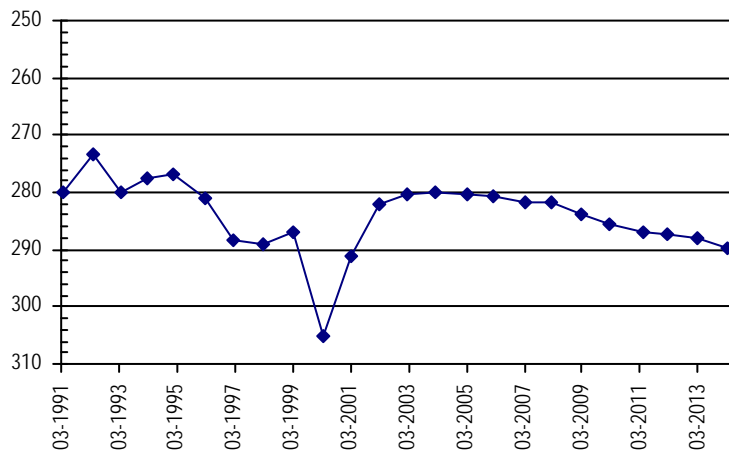


**Well Name:** **SHP-10 BELIN, OSCAR & ALTA** **Owner:** BELIN, OSCAR & ALTA  
**Permit #:** 5498 - F - **Location #:** SC02804501BB **USGS Site ID:**  
**Division:** 2 **Water District:** 67 **County:** BACA  
**Location:** Q160 Q40 Q10 Section **Twnshp** Range **PM** Distance from section lines:  
NW NW 1 28 S 45 W S **From N/S line:** **From E/W line:**  
**UTM Coordinates (NAD83):** **Northing (UTM y):** 4169281.0 **Easting (UTM x):** 726084.0 *GPS*  
**Latitude/Longitude (decimal degrees):**  
**Surface Elevation (ft):** 4185 **Top Perforated Interval (ft):** **Base of grout (ft):** **Water Level Change**  
**Well depth (ft):** 407 **Bottom Perforated Interval (ft):** **1 year:** -1.69  
**Aquifer(s):** DAKOTA **5 year:** -5.89  
**10 year:** -9.69  
DOCKUM

### Measurements from last 10 years

Date	Depth to WL (ft)	Elev of WL (ft)	Change (ft)
2/28/2004	280.10	3904.90	0.40
3/1/2005	280.50	3904.50	-0.40
2/15/2006	280.60	3904.40	-0.10
3/22/2007	281.80	3903.20	-1.20
2/3/2008	281.80	3903.20	0.00
2/7/2009	283.90	3901.10	-2.10
2/14/2010	285.70	3899.30	-1.80
4/12/2011	287.00	3898.00	-1.30
2/18/2012	287.20	3897.80	-0.20
2/23/2013	288.10	3896.90	-0.90
3/18/2014	289.79	3895.21	-1.69

### All Historic Measurements



## SOUTHERN HIGH PLAINS

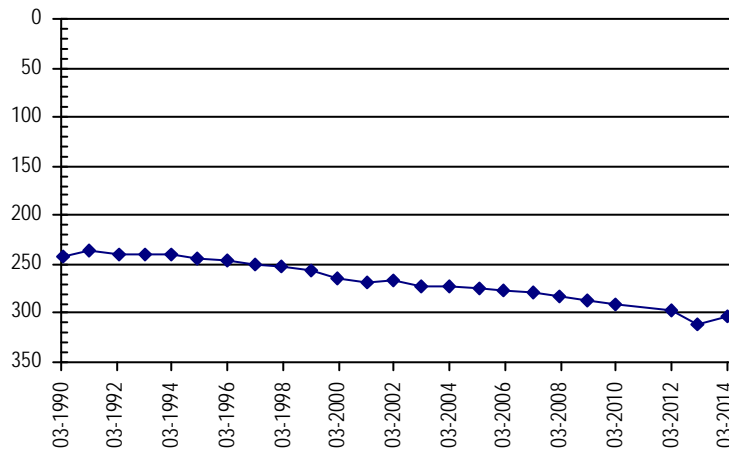
<b>Well Name:</b>	<b>SHP-11 AUSMUS,G,&amp; S. 1</b>	<i>Owner:</i>	AUSMUS,G.& S.
<i>Permit #:</i>	9350 - F -	<i>Location #:</i>	SC02804514ADC
<i>USGS Site ID:</i>			
<i>Division:</i>	2	<i>Water District:</i>	67
		<i>County:</i>	BACA
<i>Location:</i>	Q160 Q40 Q10 Section	Twnshp Range PM	Distance from section lines:
	NE SE SW 14	28 S 45 W S	<i>From N/S line:</i> <i>From E/W line:</i>
<i>UTM Coordinates (NAD83):</i>	<i>Northing (UTM y):</i>	4164038.9	<i>Easting (UTM x):</i> 727515.1 <i>GPS</i>
<i>Latitude/Longitude (decimal degrees):</i>	37.595317		-102.422955
<i>Surface Elevation (ft):</i>	4150	<i>Top Perforated Interval (ft):</i>	<i>Base of grout (ft):</i>
<i>Well depth (ft):</i>	430	<i>Bottom Perforated Interval (ft):</i>	
<i>Aquifer(s):</i>	DAKOTA		
	CHEYENNE		

**Water Level Change**  
**1 year:** 8.00  
**5 year:** -16.60  
**10 year:** -31.20

### Measurements from last 10 years

Date	Depth to WL (ft)	Elev of WL (ft)	Change (ft)
2/28/2004	272.90	3877.10	-0.90
3/1/2005	273.80	3876.20	-0.90
2/15/2006	276.40	3873.60	-2.60
3/22/2007	279.50	3870.50	-3.10
2/3/2008	282.30	3867.70	-2.80
2/3/2009	287.50	3862.50	-5.20
2/14/2010	290.50	3859.50	-3.00
4/13/2011			
2/18/2012	297.60	3852.40	
2/23/2013	312.10	3837.90	-14.50
3/18/2014	304.10	3845.90	8.00

### All Historic Measurements



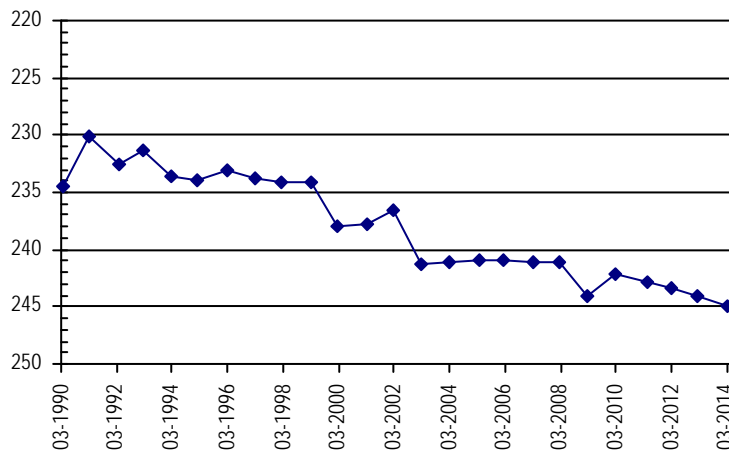
<b>Well Name:</b>	<b>SHP-12 AUSMUS,G.&amp; S. 2</b>	<i>Owner:</i>	AUSMUS,G.& S.
<i>Permit #:</i>	5259 - F -	<i>Location #:</i>	SC02804514CCC
<i>USGS Site ID:</i>			
<i>Division:</i>	2	<i>Water District:</i>	67
		<i>County:</i>	BACA
<i>Location:</i>	Q160 Q40 Q10 Section	Twnshp Range PM	Distance from section lines:
	SW SW SW 14	28 S 45 W S	<i>From N/S line:</i> <i>From E/W line:</i>
<i>UTM Coordinates (NAD83):</i>	<i>Northing (UTM y):</i>	4164751.9	<i>Easting (UTM x):</i> 724594.1 <i>GPS</i>
<i>Latitude/Longitude (decimal degrees):</i>	37.602455		-102.455792
<i>Surface Elevation (ft):</i>	4205	<i>Top Perforated Interval (ft):</i>	<i>Base of grout (ft):</i>
<i>Well depth (ft):</i>	450	<i>Bottom Perforated Interval (ft):</i>	
<i>Aquifer(s):</i>	CHEYENNE		

**Water Level Change**  
**1 year:** -0.77  
**5 year:** -0.87  
**10 year:** -3.77

### Measurements from last 10 years

Date	Depth to WL (ft)	Elev of WL (ft)	Change (ft)
2/28/2004	241.10	3963.90	0.10
3/1/2005	241.00	3964.00	0.10
2/15/2006	241.00	3964.00	0.00
3/22/2007	241.10	3963.90	-0.10
2/3/2008	241.10	3963.90	0.00
2/3/2009	244.00	3961.00	-2.90
2/14/2010	242.10	3962.90	1.90
4/13/2011	242.90	3962.10	-0.80
2/18/2012	243.30	3961.70	-0.40
2/23/2013	244.10	3960.90	-0.80
3/18/2014	244.87	3960.13	-0.77

### All Historic Measurements



## SOUTHERN HIGH PLAINS

**Well Name:** **SHP-13 KITZMILLER,K.& M.** **Owner:** KITZMILLER,K.& M.  
**Permit #:** 10080 - F - **Location #:** SC02804613BCC **USGS Site ID:** 373626102324700

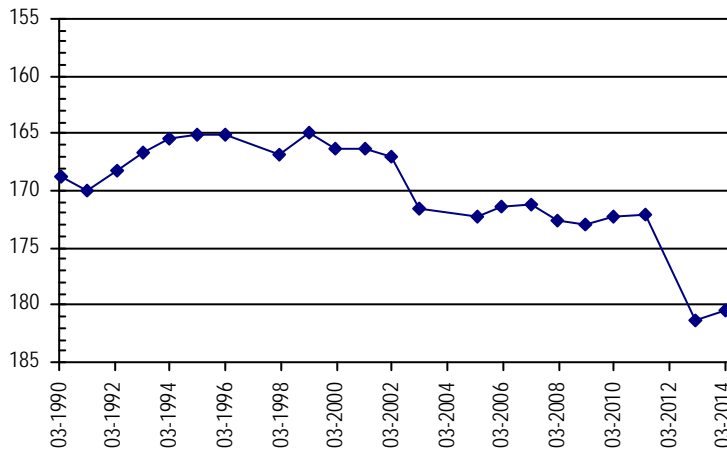
**Division:** 2 **Water District:** 67 **County:** BACA  
**Location:** Q160 Q40 Q10 Section Twnshp Range PM Distance from section lines:  
NW SW SW 13 28 S 46 W S **From N/S line:** **From E/W line:**  
**UTM Coordinates (NAD83):** **Northing (UTM y):** 4159144.9 **Easting (UTM x):** 710173.0 *GPS*  
**Latitude/Longitude (decimal degrees):** 37.555368 -102.620630

**Surface Elevation (ft):** 4311.96 **Top Perforated Interval (ft):** **Base of grout (ft):** **Water Level Change**  
**Well depth (ft):** 253 **Bottom Perforated Interval (ft):** **1 year:** 0.90  
**Aquifer(s):** CHEYENNE **5 year:** -7.50  
**10 year:**

### Measurements from last 10 years

Date	Depth to WL (ft)	Elev of WL (ft)	Change (ft)
3/1/2005	172.30	4139.66	-0.70
2/15/2006	171.40	4140.56	0.90
3/22/2007	171.30	4140.66	0.10
2/3/2008	172.70	4139.26	-1.40
2/3/2009	172.90	4139.06	-0.20
2/14/2010	172.30	4139.66	0.60
4/13/2011	172.10	4139.86	0.20
2/18/2012			
2/16/2013	181.30	4130.66	
3/18/2014	180.40	4131.56	0.90

### All Historic Measurements



**Well Name:** **SHP-14 KITZMILLER,MARY F.** **Owner:** KITZMILLER,MARY F.  
**Permit #:** 9444 - F - **Location #:** SC02804616BCB **USGS Site ID:**

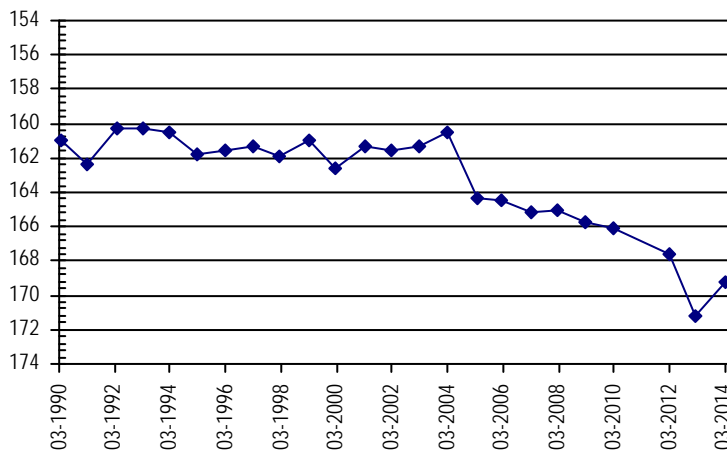
**Division:** 2 **Water District:** 67 **County:** BACA  
**Location:** Q160 Q40 Q10 Section Twnshp Range PM Distance from section lines:  
NW SW NW 16 28 S 46 W S **From N/S line:** **From E/W line:**  
**UTM Coordinates (NAD83):** **Northing (UTM y):** 4145643.8 **Easting (UTM x):** 726760.0 *GPS*  
**Latitude/Longitude (decimal degrees):** 37.429863 -102.437174

**Surface Elevation (ft):** 4385 **Top Perforated Interval (ft):** **Base of grout (ft):** **Water Level Change**  
**Well depth (ft):** 210 **Bottom Perforated Interval (ft):** **1 year:** 1.91  
**Aquifer(s):** DAKOTA **5 year:** -3.59  
**10 year:** -8.79

### Measurements from last 10 years

Date	Depth to WL (ft)	Elev of WL (ft)	Change (ft)
2/28/2004	160.50	4224.50	0.80
3/1/2005	164.30	4220.70	-3.80
2/15/2006	164.50	4220.50	-0.20
3/22/2007	165.20	4219.80	-0.70
2/3/2008	165.00	4220.00	0.20
2/3/2009	165.70	4219.30	-0.70
2/14/2010	166.10	4218.90	-0.40
4/12/2011			
2/18/2012	167.60	4217.40	
2/17/2013	171.20	4213.80	-3.60
3/18/2014	169.29	4215.71	1.91

### All Historic Measurements



## SOUTHERN HIGH PLAINS

**Well Name:** SHP-15 MOORE

**Owner:** MOORE

**Permit #:** 9835 - -

**Location #:** SC02804835DCD

**USGS Site ID:**

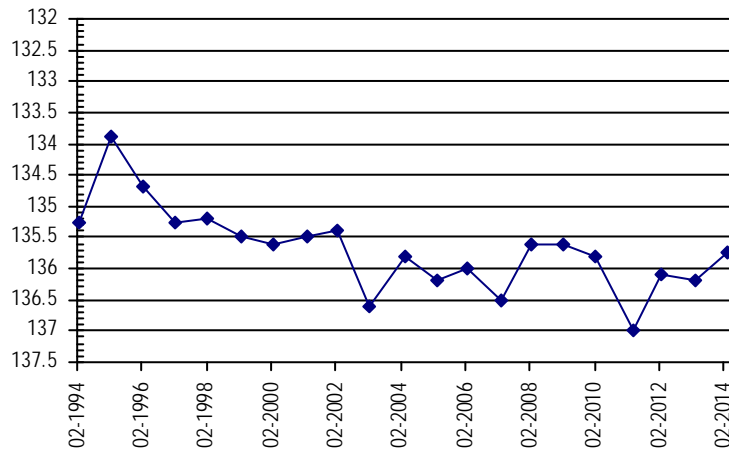
**Division:** 2      **Water District:** 67      **County:** BACA  
**Location:** Q160 Q40 Q10 Section    **Twnshp**    **Range**    **PM**      **Distance from section lines:**  
    SE SW SE    35      28    S      48    W    S      **From N/S line:**              **From E/W line:**  
**UTM Coordinates (NAD83):**    **Northing (UTM y):**    4159141.0    **Easting (UTM x):**    696769.0    *GPS*  
**Latitude/Longitude (decimal degrees):**

**Surface Elevation (ft):** 4610      **Top Perforated Interval (ft):**              **Base of grout (ft):**              **Water Level Change**  
**Well depth (ft):** 316      **Bottom Perforated Interval (ft):**              **1 year:** 0.46  
**Aquifer(s):** DAKOTA              **5 year:** -0.14  
    **10 year:** 0.06

**Measurements from last 10 years**

Date	Depth to WL (ft)	Elev of WL (ft)	Change (ft)
3/2/2004	135.80	4474.20	0.80
3/3/2005	136.20	4473.80	-0.40
2/20/2006	136.00	4474.00	0.20
3/24/2007	136.50	4473.50	-0.50
2/8/2008	135.60	4474.40	0.90
2/6/2009	135.60	4474.40	0.00
2/24/2010	135.80	4474.20	-0.20
4/12/2011	137.00	4473.00	-1.20
2/25/2012	136.10	4473.90	0.90
3/8/2013	136.20	4473.80	-0.10
3/25/2014	135.74	4474.26	0.46

**All Historic Measurements**



**Well Name:** SHP-16 COMMERCE RANCH 1

**Owner:** COMMERCE RANCH

**Permit #:** - -

**Location #:** SC02904315CCB

**USGS Site ID:** 373058102151500

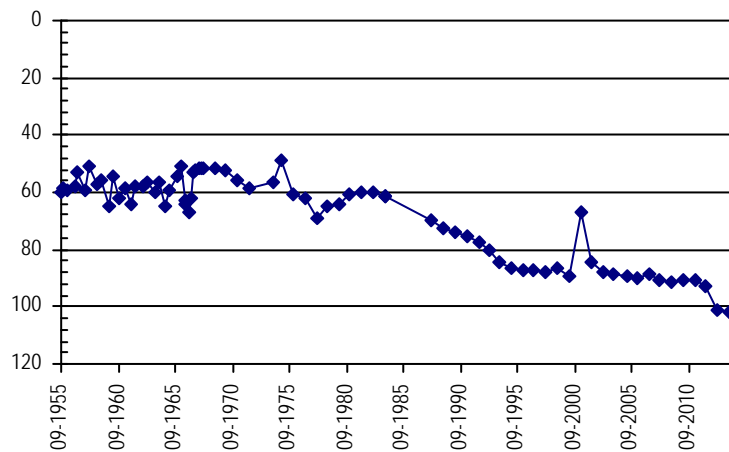
**Division:** 2      **Water District:** 67      **County:** BACA  
**Location:** Q160 Q40 Q10 Section    **Twnshp**    **Range**    **PM**      **Distance from section lines:**  
    SW SW NW    15      29    S      43    W    S      **From N/S line:**              **From E/W line:**  
**UTM Coordinates (NAD83):**    **Northing (UTM y):**    4155748.0    **Easting (UTM x):**    742599.0    *GPS*  
**Latitude/Longitude (decimal degrees):**

**Surface Elevation (ft):** 3914.58      **Top Perforated Interval (ft):**              **Base of grout (ft):**              **Water Level Change**  
**Well depth (ft):** 343      **Bottom Perforated Interval (ft):**              **1 year:** -0.91  
**Aquifer(s):** DOCKUM              **5 year:** -10.91  
    **10 year:** -13.21

**Measurements from last 10 years**

Date	Depth to WL (ft)	Elev of WL (ft)	Change (ft)
1/29/2004	88.80	3825.78	-0.80
3/22/2005	89.20	3825.38	-0.40
3/4/2006	89.90	3824.68	-0.70
3/31/2007	88.70	3825.88	1.20
2/19/2008	90.40	3824.18	-1.70
2/11/2009	91.10	3823.48	-0.70
2/26/2010	91.00	3823.58	0.10
3/23/2011	91.00	3823.58	0.00
2/8/2012	93.10	3821.48	-2.10
3/2/2013	101.10	3813.48	-8.00
3/20/2014	102.01	3812.57	-0.91

**All Historic Measurements**





## SOUTHERN HIGH PLAINS

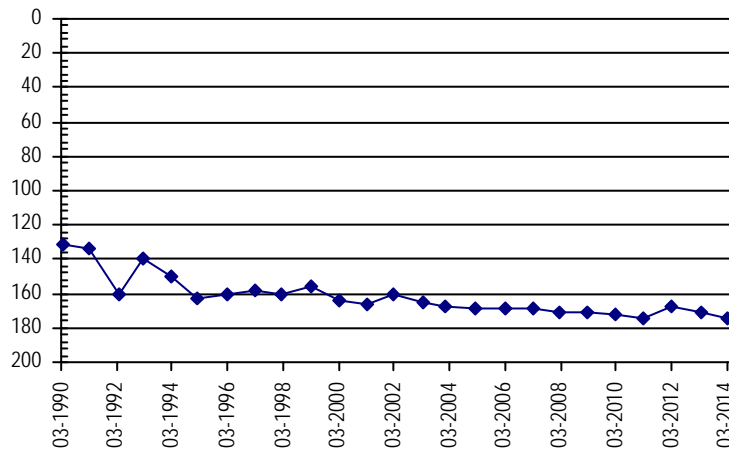
<b>Well Name:</b>	<b>SHP-17 COMMERCE RANCH 2</b>	<i>Owner:</i>	COMMERCE RANCH
<i>Permit #:</i>	18427 - R -	<i>Location #:</i>	SC02904316BB
<i>USGS Site ID:</i>			
<i>Division:</i>	2	<i>Water District:</i>	67
		<i>County:</i>	BACA
<i>Location:</i>	Q160 Q40 Q10 Section	Twnshp Range PM	Distance from section lines:
	NW NW 16	29 S 43 W S	<i>From N/S line:</i> <i>From E/W line:</i>
<i>UTM Coordinates (NAD83):</i>	<i>Northing (UTM y):</i>	4156878.8	<i>Easting (UTM x):</i> 740938.1 <i>GPS</i>
<i>Latitude/Longitude (decimal degrees):</i>		37.527436	-102.273420
<i>Surface Elevation (ft):</i>	3939	<i>Top Perforated Interval (ft):</i>	<i>Base of grout (ft):</i>
<i>Well depth (ft):</i>	411	<i>Bottom Perforated Interval (ft):</i>	
<i>Aquifer(s):</i>	DAKOTA		
	CHEYENNE		

**Water Level Change**  
**1 year:** -3.59  
**5 year:** -3.19  
**10 year:** -7.39

### Measurements from last 10 years

Date	Depth to WL (ft)	Elev of WL (ft)	Change (ft)
1/29/2004	167.30	3771.70	-2.40
2/22/2005	168.30	3770.70	-1.00
3/4/2006	168.80	3770.20	-0.50
3/31/2007	169.00	3770.00	-0.20
2/19/2008	170.70	3768.30	-1.70
2/11/2009	171.50	3767.50	-0.80
2/26/2010	172.00	3767.00	-0.50
2/23/2011	174.10	3764.90	-2.10
2/8/2012	168.00	3771.00	6.10
3/2/2013	171.10	3767.90	-3.10
3/20/2014	174.69	3764.31	-3.59

### All Historic Measurements



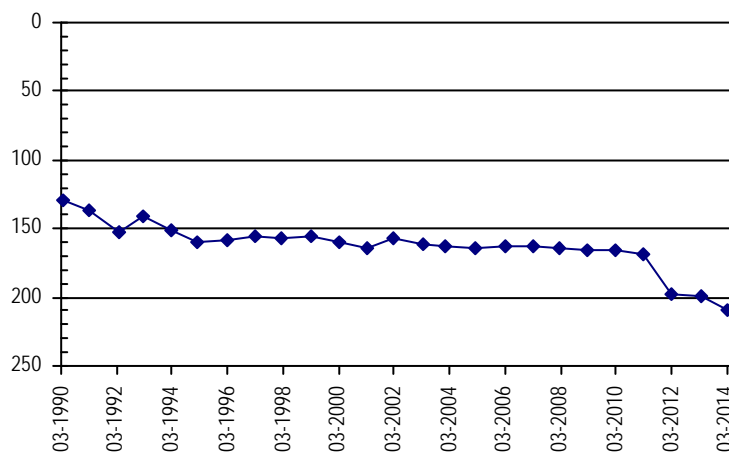
<b>Well Name:</b>	<b>SHP-18 COMMERCE RANCH 3</b>	<i>Owner:</i>	COMMERCE RANCH
<i>Permit #:</i>	18427 - R -	<i>Location #:</i>	SC02904316CBB
<i>USGS Site ID:</i>			
<i>Division:</i>	2	<i>Water District:</i>	67
		<i>County:</i>	BACA
<i>Location:</i>	Q160 Q40 Q10 Section	Twnshp Range PM	Distance from section lines:
	SW NW NW 16	29 S 43 W S	<i>From N/S line:</i> 1914 S <i>From E/W line:</i> 112 W
<i>UTM Coordinates (NAD83):</i>	<i>Northing (UTM y):</i>	4156240.8	<i>Easting (UTM x):</i> 740912.1 <i>GPS</i>
<i>Latitude/Longitude (decimal degrees):</i>		37.521699	-102.273923
<i>Surface Elevation (ft):</i>	3936	<i>Top Perforated Interval (ft):</i>	<i>Base of grout (ft):</i>
<i>Well depth (ft):</i>	459	<i>Bottom Perforated Interval (ft):</i>	
<i>Aquifer(s):</i>	DAKOTA		
	CHEYENNE		

**Water Level Change**  
**1 year:** -9.56  
**5 year:** -43.16  
**10 year:** -45.36

### Measurements from last 10 years

Date	Depth to WL (ft)	Elev of WL (ft)	Change (ft)
1/29/2004	163.30	3772.70	-1.30
2/22/2005	164.00	3772.00	-0.70
3/4/2006	163.10	3772.90	0.90
3/31/2007	163.30	3772.70	-0.20
2/19/2008	164.80	3771.20	-1.50
2/13/2009	165.50	3770.50	-0.70
2/26/2010	165.80	3770.20	-0.30
2/21/2011	168.80	3767.20	-3.00
2/8/2012	198.00	3738.00	-29.20
3/8/2013	199.10	3736.90	-1.10
3/20/2014	208.66	3727.34	-9.56

### All Historic Measurements



## SOUTHERN HIGH PLAINS

**Well Name:** **SHP-19 COMMERCE RANCH 4** **Owner:** COMMERCE RANCH  
**Permit #:** 67883 - - **Location #:** SC02904321BAD **USGS Site ID:**

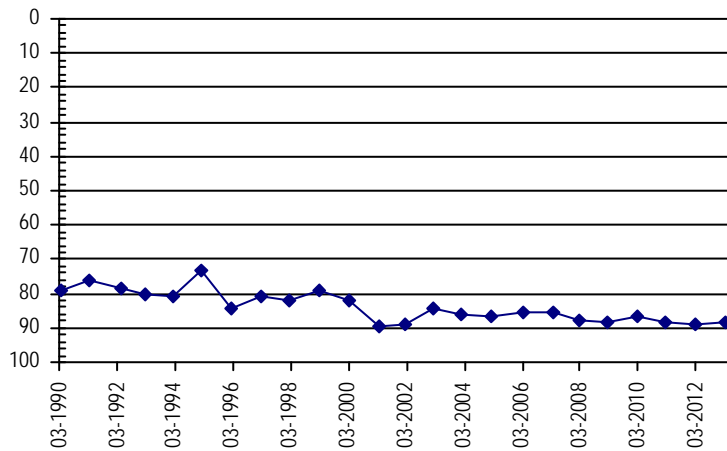
**Division:** 2 **Water District:** 67 **County:** BACA  
**Location:** Q160 Q40 Q10 Section Twnshp Range PM Distance from section lines:  
 NW NE SE 21 29 S 43 W S **From N/S line:** **From E/W line:**  
**UTM Coordinates (NAD83):** **Northing (UTM y):** 4155067.0 **Easting (UTM x):** 741741.0 *GPS*  
**Latitude/Longitude (decimal degrees):**

**Surface Elevation (ft):** 3915 **Top Perforated Interval (ft):** **Base of grout (ft):** **Water Level Change**  
**Well depth (ft):** 400 **Bottom Perforated Interval (ft):** **1 year:**  
**Aquifer(s):** DAKOTA **5 year:**  
 CHEYENNE **10 year:**

### Measurements from last 10 years

Date	Depth to WL (ft)	Elev of WL (ft)	Change (ft)
1/29/2004	85.90	3829.10	-1.70
2/21/2005	86.50	3828.50	-0.60
3/4/2006	85.40	3829.60	1.10
3/31/2007	85.40	3829.60	0.00
2/19/2008	88.00	3827.00	-2.60
2/11/2009	88.30	3826.70	-0.30
2/26/2010	86.60	3828.40	1.70
2/22/2011	88.30	3826.70	-1.70
2/18/2012	89.10	3825.90	-0.80
3/2/2013	88.40	3826.60	0.70
3/20/2014			

### All Historic Measurements



**Well Name:** **SHP-20 THOMPSON,H.J.** **Owner:** THOMPSON,H.J.  
**Permit #:** 12273 - R - **Location #:** SC02904331CCC **USGS Site ID:**

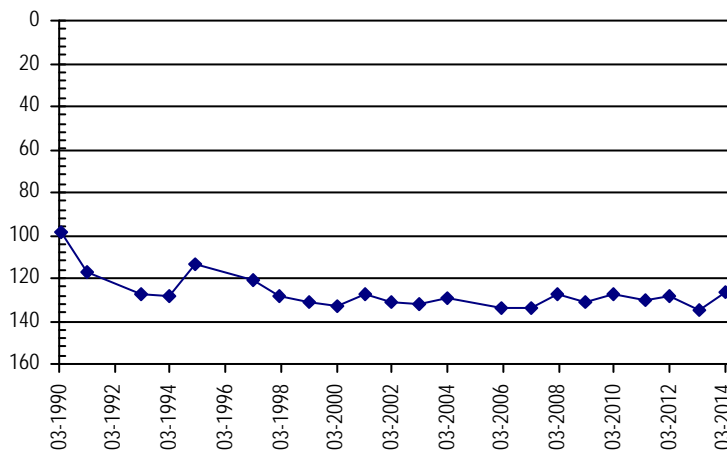
**Division:** 2 **Water District:** 66 **County:** BACA  
**Location:** Q160 Q40 Q10 Section Twnshp Range PM Distance from section lines:  
 SW SW SW 31 29 S 43 W S **From N/S line:** **From E/W line:**  
**UTM Coordinates (NAD83):** **Northing (UTM y):** 4132773.7 **Easting (UTM x):** 752428.3 *GPS*  
**Latitude/Longitude (decimal degrees):** 37.307355 -102.151772

**Surface Elevation (ft):** 3964 **Top Perforated Interval (ft):** **Base of grout (ft):** **Water Level Change**  
**Well depth (ft):** 416 **Bottom Perforated Interval (ft):** **1 year:** 9.05  
**Aquifer(s):** DAKOTA **5 year:** 5.25  
 CHEYENNE **10 year:** 3.55

### Measurements from last 10 years

Date	Depth to WL (ft)	Elev of WL (ft)	Change (ft)
2/29/2004	129.70	3834.30	2.60
2/20/2006	133.70	3830.30	-4.00
3/23/2007	133.60	3830.40	0.10
2/4/2008	127.70	3836.30	5.90
2/7/2009	131.40	3832.60	-3.70
2/20/2010	127.70	3836.30	3.70
4/12/2011	129.90	3834.10	-2.20
2/18/2012	128.10	3835.90	1.80
3/2/2013	135.20	3828.80	-7.10
3/20/2014	126.15	3837.85	9.05

### All Historic Measurements





## SOUTHERN HIGH PLAINS

**Well Name:** **SHP-23 WILSON,F.** **Owner:** WILSON,F.  
**Permit #:** 3126 - F - **Location #:** SC02904605BB **USGS Site ID:** 373308102370300

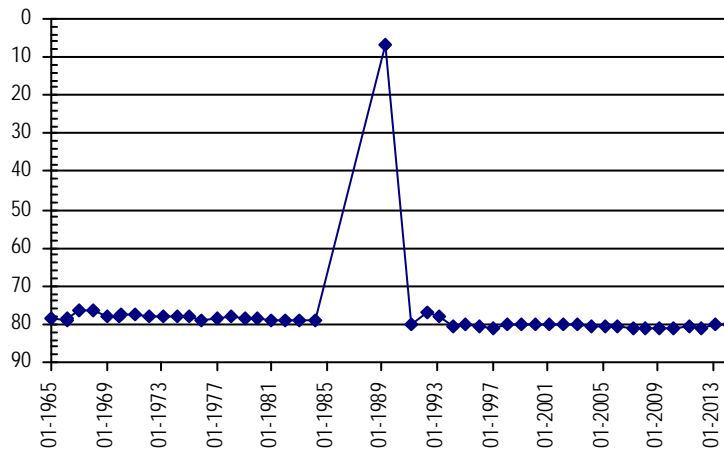
**Division:** 2 **Water District:** 67 **County:** BACA  
**Location:** Q160 Q40 Q10 Section Twnshp Range PM Distance from section lines:  
 NW NW 5 29 S 46 W S **From N/S line:** **From E/W line:**  
**UTM Coordinates (NAD83):** **Northing (UTM y):** 4165301.9 **Easting (UTM x):** 716439.1 *GPS*  
**Latitude/Longitude (decimal degrees):** 37.609363 -102.547931

**Surface Elevation (ft):** 4382.02 **Top Perforated Interval (ft):** **Base of grout (ft):** **Water Level Change**  
**Well depth (ft):** 132 **Bottom Perforated Interval (ft):** **1 year:** -0.07  
**Aquifer(s):** DAKOTA **5 year:** 0.93  
**10 year:** 0.53

### Measurements from last 10 years

Date	Depth to WL (ft)	Elev of WL (ft)	Change (ft)
3/2/2004	80.80	4301.22	-0.60
3/3/2005	80.60	4301.42	0.20
2/16/2006	80.80	4301.22	-0.20
3/23/2007	81.00	4301.02	-0.20
2/8/2008	81.10	4300.92	-0.10
2/6/2009	81.20	4300.82	-0.10
2/24/2010	80.90	4301.12	0.30
4/12/2011	80.50	4301.52	0.40
2/25/2012	80.90	4301.12	-0.40
3/8/2013	80.20	4301.82	0.70
3/20/2014	80.27	4301.75	-0.07

### All Historic Measurements



**Well Name:** **SHP-24 CHENOWETH,W.V.** **Owner:** CHENOWETH,W.V.  
**Permit #:** 62402 - - **Location #:** SC02904607BBB **USGS Site ID:**

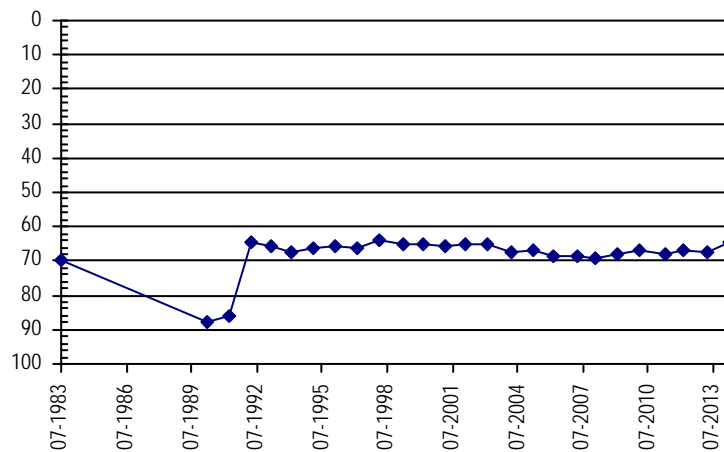
**Division:** 2 **Water District:** 67 **County:** BACA  
**Location:** Q160 Q40 Q10 Section Twnshp Range PM Distance from section lines:  
 NW NW NW 7 29 S 46 W S **From N/S line:** **From E/W line:**  
**UTM Coordinates (NAD83):** **Northing (UTM y):** 4157889.9 **Easting (UTM x):** 708767.0 *GPS*  
**Latitude/Longitude (decimal degrees):** 37.544385 -102.636892

**Surface Elevation (ft):** 4380 **Top Perforated Interval (ft):** 70 **Base of grout (ft):** **Water Level Change**  
**Well depth (ft):** 100 **Bottom Perforated Interval (ft):** 100 **1 year:** 2.90  
**Aquifer(s):** DAKOTA **5 year:** 3.20  
**10 year:** 2.50

### Measurements from last 10 years

Date	Depth to WL (ft)	Elev of WL (ft)	Change (ft)
3/2/2004	67.20	4312.80	-2.00
3/3/2005	66.80	4313.20	0.40
2/16/2006	68.80	4311.20	-2.00
3/23/2007	68.50	4311.50	0.30
2/8/2008	68.90	4311.10	-0.40
2/3/2009	67.90	4312.10	1.00
2/24/2010	66.90	4313.10	1.00
4/12/2011	68.20	4311.80	-1.30
2/25/2012	67.10	4312.90	1.10
3/8/2013	67.60	4312.40	-0.50
3/20/2014	64.70	4315.30	2.90

### All Historic Measurements



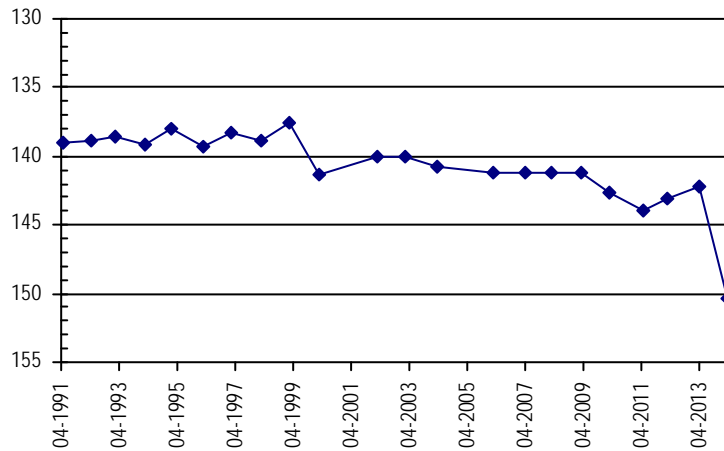
## SOUTHERN HIGH PLAINS

<b>Well Name:</b>	<b>SHP-25 BAMBER, M. R.</b>	<i>Owner:</i>	BAMBER, M. R.
<i>Permit #:</i>	593 - RN -	<i>Location #:</i>	SC02904828BBB
<i>USGS Site ID:</i>			
<i>Division:</i>	2	<i>Water District:</i>	67
<i>County:</i>	BACA		
<i>Location:</i>	Q160 Q40 Q10 Section	Twnshp Range PM	Distance from section lines:
	NW NW NW 28	29 S 48 W S	<i>From N/S line:</i> <i>From E/W line:</i>
<i>UTM Coordinates (NAD83):</i>	<i>Northing (UTM y):</i>	4152303.9	<i>Easting (UTM x):</i> 692808.8 <i>GPS</i>
<i>Latitude/Longitude (decimal degrees):</i>	37.497548		-102.818869
<i>Surface Elevation (ft):</i>	4675	<i>Top Perforated Interval (ft):</i>	350
<i>Well depth (ft):</i>	401	<i>Bottom Perforated Interval (ft):</i>	401
<i>Aquifer(s):</i>	DAKOTA		<b>Water Level Change</b>
	CHEYENNE		
			<b>1 year:</b> -8.16
			<b>5 year:</b> -9.16
			<b>10 year:</b> -9.66

### Measurements from last 10 years

Date	Depth to WL (ft)	Elev of WL (ft)	Change (ft)
3/2/2004	140.70	4534.30	-0.70
2/20/2006	141.20	4533.80	-0.50
3/24/2007	141.20	4533.80	0.00
2/8/2008	141.20	4533.80	0.00
2/6/2009	141.20	4533.80	0.00
2/24/2010	142.70	4532.30	-1.50
4/13/2011	144.00	4531.00	-1.30
2/25/2012	143.10	4531.90	0.90
3/8/2013	142.20	4532.80	0.90
3/25/2014	150.36	4524.64	-8.16

### All Historic Measurements

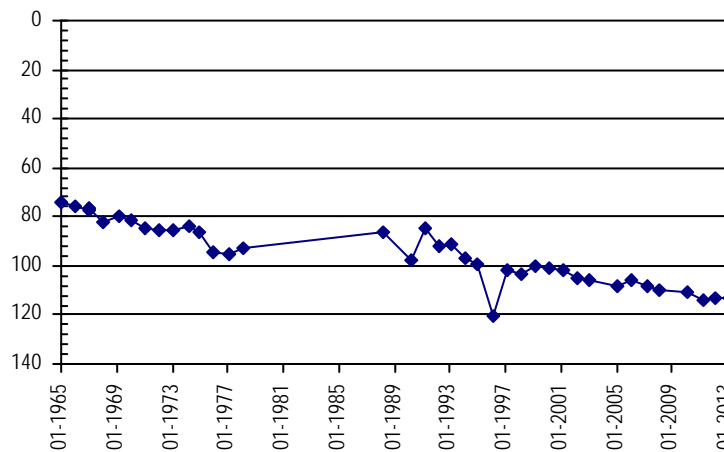


<b>Well Name:</b>	<b>SHP-26 DILLINGER, ARDEN</b>	<i>Owner:</i>	DILLINGER, ARDEN
<i>Permit #:</i>	5472 - F -	<i>Location #:</i>	SC03004120CBB
<i>USGS Site ID:</i>	372511102042000		
<i>Division:</i>	2	<i>Water District:</i>	66
<i>County:</i>	BACA		
<i>Location:</i>	Q160 Q40 Q10 Section	Twnshp Range PM	Distance from section lines:
	SW NW NW 20	30 S 41 W S	<i>From N/S line:</i> <i>From E/W line:</i>
<i>UTM Coordinates (NAD83):</i>	<i>Northing (UTM y):</i>	4145401.3	<i>Easting (UTM x):</i> 759052.6 <i>GPS</i>
<i>Latitude/Longitude (decimal degrees):</i>	37.419208		-102.072699
<i>Surface Elevation (ft):</i>	3685.43	<i>Top Perforated Interval (ft):</i>	
<i>Well depth (ft):</i>	150	<i>Bottom Perforated Interval (ft):</i>	
<i>Aquifer(s):</i>	OGALLALA		<b>Water Level Change</b>

### Measurements from last 10 years

Date	Depth to WL (ft)	Elev of WL (ft)	Change (ft)
2/21/2005	108.20	3577.23	-2.10
2/20/2006	106.10	3579.33	2.10
3/23/2007	108.00	3577.43	-1.90
2/4/2008	109.70	3575.73	-1.70
2/7/2009			
2/19/2010	111.00	3574.43	
4/13/2011	114.00	3571.43	-3.00
2/18/2012	113.20	3572.23	0.80
3/2/2013	112.80	3572.63	0.40
3/20/2014			

### All Historic Measurements



## SOUTHERN HIGH PLAINS

**Well Name:** **SHP-27 SPIRITUAL SC. CHURCH** **Owner:** SPIRITUAL SC. CHURCH  
**Permit #:** 3351 - F - **Location #:** SC03004217DD **USGS Site ID:**

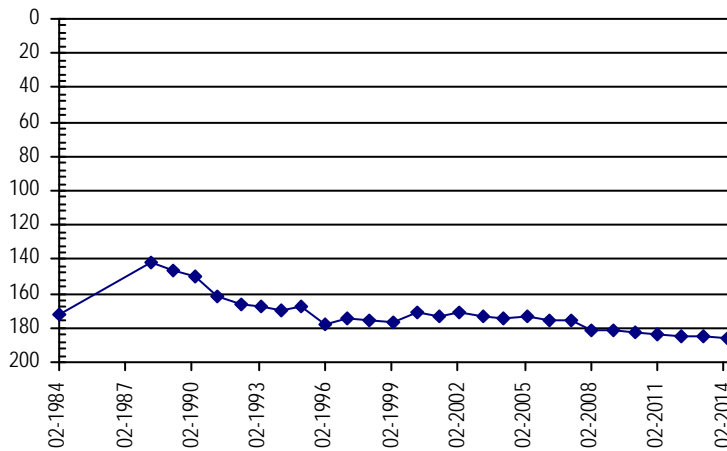
**Division:** 2 **Water District:** 67 **County:** BACA  
**Location:** Q160 Q40 Q10 Section Twnshp Range PM Distance from section lines:  
 SE SE 17 30 S 42 W S **From N/S line:** **From E/W line:**  
**UTM Coordinates (NAD83):** **Northing (UTM y):** 4146146.7 **Easting (UTM x):** 749254.2 *GPS*  
**Latitude/Longitude (decimal degrees):** 37.428608 -102.183045

**Surface Elevation (ft):** 3830 **Top Perforated Interval (ft):** **Base of grout (ft):** **Water Level Change**  
**Well depth (ft):** 393 **Bottom Perforated Interval (ft):** **1 year:** -1.02  
**Aquifer(s):** DAKOTA **5 year:** -4.02  
 CHEYENNE **10 year:** -11.22

### Measurements from last 10 years

Date	Depth to WL (ft)	Elev of WL (ft)	Change (ft)
2/27/2004	174.30	3655.70	-0.90
3/9/2005	173.40	3656.60	0.90
3/4/2006	175.80	3654.20	-2.40
3/31/2007	175.30	3654.70	0.50
2/20/2008	181.00	3649.00	-5.70
2/11/2009	181.50	3648.50	-0.50
2/26/2010	182.30	3647.70	-0.80
2/20/2011	184.00	3646.00	-1.70
3/1/2012	184.70	3645.30	-0.70
3/2/2013	184.50	3645.50	0.20
3/20/2014	185.52	3644.48	-1.02

### All Historic Measurements



**Well Name:** **SHP-28 HUME, ROD** **Owner:** HUME, ROD  
**Permit #:** 19206 - F - **Location #:** SC03004234BC **USGS Site ID:**

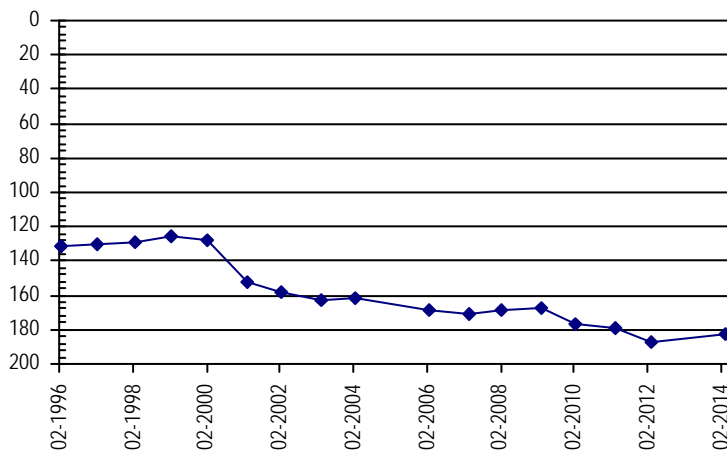
**Division:** 2 **Water District:** 66 **County:** BACA  
**Location:** Q160 Q40 Q10 Section Twnshp Range PM Distance from section lines:  
 NW SW 34 30 S 42 W S **From N/S line:** **From E/W line:**  
**UTM Coordinates (NAD83):** **Northing (UTM y):** 4142585.1 **Easting (UTM x):** 752925.0 *GPS*  
**Latitude/Longitude (decimal degrees):** 37.395549 -102.142825

**Surface Elevation (ft):** 3780 **Top Perforated Interval (ft):** **Base of grout (ft):** **Water Level Change**  
**Well depth (ft):** 540 **Bottom Perforated Interval (ft):** **1 year:** -14.52  
**Aquifer(s):** CHEYENNE **5 year:** -14.52  
 DOCKUM **10 year:** -20.52

### Measurements from last 10 years

Date	Depth to WL (ft)	Elev of WL (ft)	Change (ft)
2/19/2004	161.50	3618.50	1.00
2/28/2006	169.00	3611.00	-7.50
3/21/2007	170.70	3609.30	-1.70
2/23/2008	168.30	3611.70	2.40
3/8/2009	167.50	3612.50	0.80
2/28/2010	176.50	3603.50	-9.00
3/6/2011	178.50	3601.50	-2.00
3/9/2012	187.50	3592.50	-9.00
3/1/2013			
3/20/2014	182.02	3597.98	

### All Historic Measurements









## SOUTHERN HIGH PLAINS

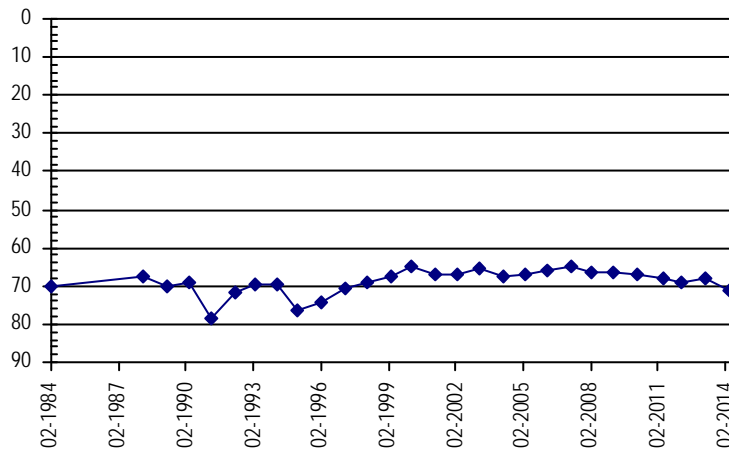
<b>Well Name:</b>	<b>SHP-33 WARD, H.</b>	<i>Owner:</i>	WARD, H.
<i>Permit #:</i>	- -	<i>Location #:</i>	SC03004625DAB
<i>USGS Site ID:</i>			
<i>Division:</i>	2	<i>Water District:</i>	67
		<i>County:</i>	BACA
<i>Location:</i>	Q160 Q40 Q10 Section	Twnshp Range PM	Distance from section lines:
	SE NE NW 25	30 S 46 W S	<i>From N/S line:</i> <i>From E/W line:</i>
<i>UTM Coordinates (NAD83):</i>	<i>Northing (UTM y):</i>	4142564.0	<i>Easting (UTM x):</i> 718392.0 <i>Digitized off map</i>
<i>Latitude/Longitude (decimal degrees):</i>		37.404141	-102.532578
<i>Surface Elevation (ft):</i>	4238	<i>Top Perforated Interval (ft):</i>	<i>Base of grout (ft):</i>
<i>Well depth (ft):</i>		<i>Bottom Perforated Interval (ft):</i>	
<i>Aquifer(s):</i>	DAKOTA		

**Water Level Change**  
**1 year:** -2.79  
**5 year:** -4.69  
**10 year:** -3.69

### Measurements from last 10 years

Date	Depth to WL (ft)	Elev of WL (ft)	Change (ft)
3/2/2004	67.30	4170.70	-2.00
3/2/2005	67.10	4170.90	0.20
2/20/2006	66.00	4172.00	1.10
3/23/2007	65.00	4173.00	1.00
2/8/2008	66.20	4171.80	-1.20
2/9/2009	66.30	4171.70	-0.10
2/20/2010	66.80	4171.20	-0.50
4/12/2011	68.00	4170.00	-1.20
2/24/2012	69.10	4168.90	-1.10
3/8/2013	68.20	4169.80	0.90
3/21/2014	70.99	4167.01	-2.79

### All Historic Measurements



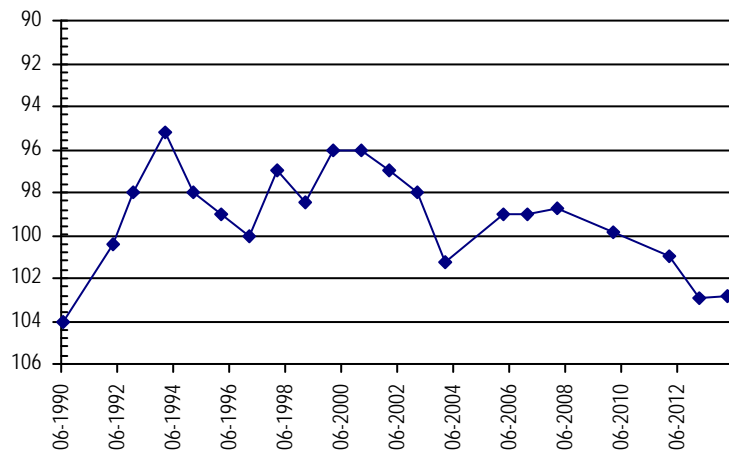
<b>Well Name:</b>	<b>SHP-34 TWN.OF SPRINGFIELD</b>	<i>Owner:</i>	TWN.OF SPRINGFIELD
<i>Permit #:</i>	15430 - F -	<i>Location #:</i>	SC03004631AC
<i>USGS Site ID:</i>			
<i>Division:</i>	2	<i>Water District:</i>	67
		<i>County:</i>	BACA
<i>Location:</i>	Q160 Q40 Q10 Section	Twnshp Range PM	Distance from section lines:
	NE SW 31	30 S 46 W S	<i>From N/S line:</i> <i>From E/W line:</i>
<i>UTM Coordinates (NAD83):</i>	<i>Northing (UTM y):</i>	4141093.0	<i>Easting (UTM x):</i> 710072.0 <i>Digitized off map</i>
<i>Latitude/Longitude (decimal degrees):</i>		37.392817	-102.626921
<i>Surface Elevation (ft):</i>	4392	<i>Top Perforated Interval (ft):</i>	90
<i>Well depth (ft):</i>	203	<i>Bottom Perforated Interval (ft):</i>	203
<i>Aquifer(s):</i>	DAKOTA		

**Water Level Change**  
**1 year:**  
**5 year:**  
**10 year:**

### Measurements from last 10 years

Date	Depth to WL (ft)	Elev of WL (ft)	Change (ft)
2/10/2004	101.25	4290.75	-3.25
3/1/2006	99.00	4293.00	2.25
1/29/2007	99.00	4293.00	0.00
2/26/2008	98.70	4293.30	0.30
1/1/2009			
2/28/2010	99.90	4292.10	
3/3/2011			
2/25/2012	101.00	4291.00	
3/31/2013	102.90	4289.10	-1.90
3/31/2014	102.83	4289.17	0.07

### All Historic Measurements



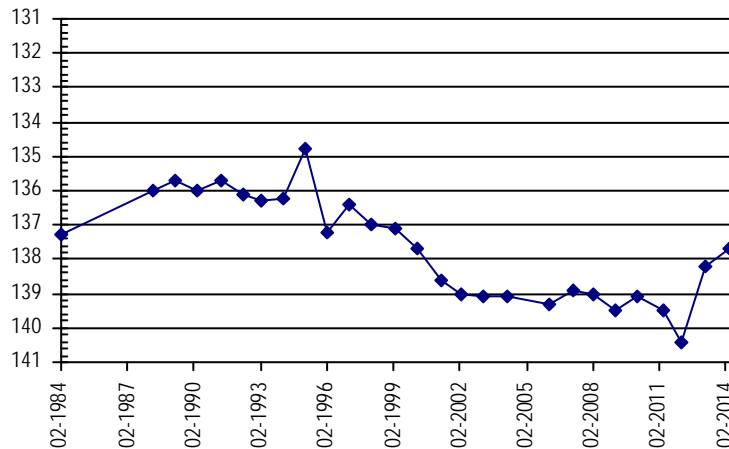
## SOUTHERN HIGH PLAINS

<b>Well Name:</b>	<b>SHP-35 MINNICK, W &amp; E</b>	<i>Owner:</i>	MINNICK, W & E
<i>Permit #:</i>	11339 - F -	<i>Location #:</i>	SC03004827ADD
<i>USGS Site ID:</i>			
<i>Division:</i>	2	<i>Water District:</i>	67
<i>County:</i>	BACA		
<i>Location:</i>	Q160 Q40 Q10 Section	Twnshp Range PM	Distance from section lines:
	NE SE SE 27	30 S 48 W S	<i>From N/S line:</i> <i>From E/W line:</i>
<i>UTM Coordinates (NAD83):</i>	<i>Northing (UTM y):</i>	4142109.3	<i>Easting (UTM x):</i> 696087.8 <i>Spotted from quarters</i>
<i>Latitude/Longitude (decimal degrees):</i>	37.405035      -102.784512		
<i>Surface Elevation (ft):</i>	4672	<i>Top Perforated Interval (ft):</i>	<i>Base of grout (ft):</i>
<i>Well depth (ft):</i>	245	<i>Bottom Perforated Interval (ft):</i>	<b>Water Level Change</b>
<i>Aquifer(s):</i>	DAKOTA		<b>1 year:</b> 0.54
			<b>5 year:</b> 1.84
			<b>10 year:</b> 1.44

### Measurements from last 10 years

Date	Depth to WL (ft)	Elev of WL (ft)	Change (ft)
3/2/2004	139.10	4532.90	0.00
2/20/2006	139.30	4532.70	-0.20
3/24/2007	138.90	4533.10	0.40
2/8/2008	139.00	4533.00	-0.10
2/6/2009	139.50	4532.50	-0.50
2/24/2010	139.10	4532.90	0.40
4/12/2011	139.50	4532.50	-0.40
2/24/2012	140.40	4531.60	-0.90
3/8/2013	138.20	4533.80	2.20
3/25/2014	137.66	4534.34	0.54

### All Historic Measurements

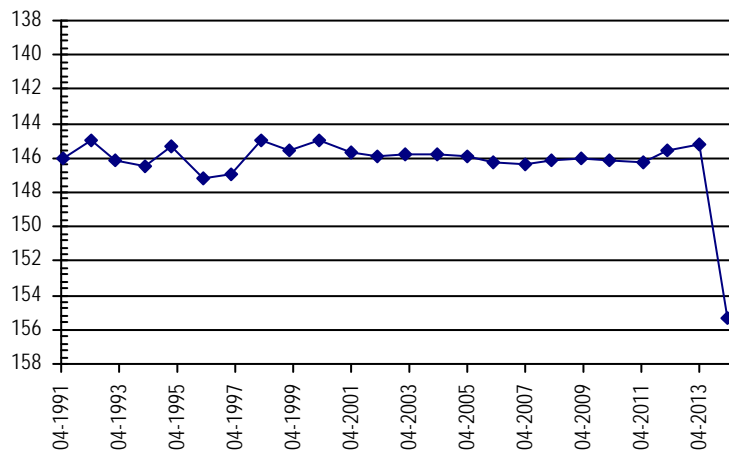


<b>Well Name:</b>	<b>SHP-36 JESSER, HARVEY</b>	<i>Owner:</i>	JESSER, HARVEY
<i>Permit #:</i>	16299 - F -	<i>Location #:</i>	SC03004911CB
<i>USGS Site ID:</i>			
<i>Division:</i>	2	<i>Water District:</i>	67
<i>County:</i>	BACA		
<i>Location:</i>	Q160 Q40 Q10 Section	Twnshp Range PM	Distance from section lines:
	SW NW 11	30 S 49 W S	<i>From N/S line:</i> 2615 S <i>From E/W line:</i> 25 W
<i>UTM Coordinates (NAD83):</i>	<i>Northing (UTM y):</i>	4146606.0	<i>Easting (UTM x):</i> 686430.0 <i>GPS</i>
<i>Latitude/Longitude (decimal degrees):</i>	37.447534      -102.892425		
<i>Surface Elevation (ft):</i>	4780	<i>Top Perforated Interval (ft):</i>	<i>Base of grout (ft):</i>
<i>Well depth (ft):</i>	350	<i>Bottom Perforated Interval (ft):</i>	<b>Water Level Change</b>
<i>Aquifer(s):</i>	CHEYENNE		<b>1 year:</b> -10.17
			<b>5 year:</b> -9.37
			<b>10 year:</b> -9.57

### Measurements from last 10 years

Date	Depth to WL (ft)	Elev of WL (ft)	Change (ft)
3/2/2004	145.80	4634.20	0.00
3/3/2005	145.90	4634.10	-0.10
2/20/2006	146.20	4633.80	-0.30
3/24/2007	146.40	4633.60	-0.20
2/8/2008	146.10	4633.90	0.30
2/6/2009	146.00	4634.00	0.10
2/24/2010	146.10	4633.90	-0.10
4/12/2011	146.25	4633.75	-0.15
2/25/2012	145.60	4634.40	0.65
3/8/2013	145.20	4634.80	0.40
3/25/2014	155.37	4624.63	-10.17

### All Historic Measurements



## SOUTHERN HIGH PLAINS

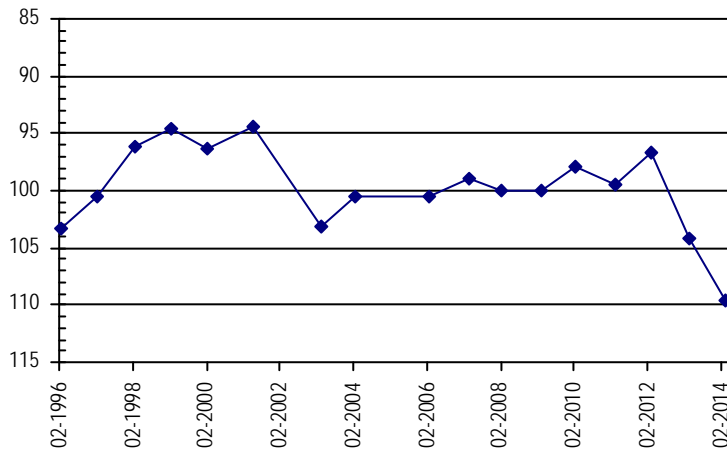
<b>Well Name:</b>	<b>SHP-37 C.D.M. TRUST</b>	<i>Owner:</i>	C.D.M. TRUST
<i>Permit #:</i>	13002 - R -	<i>Location #:</i>	SC03104108DD
<i>USGS Site ID:</i>			
<i>Division:</i>	2	<i>Water District:</i>	66
		<i>County:</i>	BACA
<i>Location:</i>	Q160 Q40 Q10 Section	Twnshp Range PM	Distance from section lines:
	SE SE 8	31 S 41 W S	<i>From N/S line:</i> <i>From E/W line:</i>
<i>UTM Coordinates (NAD83):</i>	<i>Northing (UTM y):</i>	4138326.8	<i>Easting (UTM x):</i> 760480.4 <i>GPS</i>
<i>Latitude/Longitude (decimal degrees):</i>	37.355124		-102.059076
<i>Surface Elevation (ft):</i>	3688	<i>Top Perforated Interval (ft):</i>	<i>Base of grout (ft):</i>
<i>Well depth (ft):</i>	140	<i>Bottom Perforated Interval (ft):</i>	
<i>Aquifer(s):</i>	OGALLALA		

**Water Level Change**  
**1 year:** -5.38  
**5 year:** -9.58  
**10 year:** -9.08

### Measurements from last 10 years

Date	Depth to WL (ft)	Elev of WL (ft)	Change (ft)
2/16/2004	100.50	3587.50	2.60
2/28/2006	100.50	3587.50	0.00
3/21/2007	99.00	3589.00	1.50
2/23/2008	100.00	3588.00	-1.00
3/8/2009	100.00	3588.00	0.00
2/28/2010	97.90	3590.10	2.10
3/6/2011	99.40	3588.60	-1.50
3/9/2012	96.60	3591.40	2.80
3/3/2013	104.20	3583.80	-7.60
3/19/2014	109.58	3578.42	-5.38

### All Historic Measurements



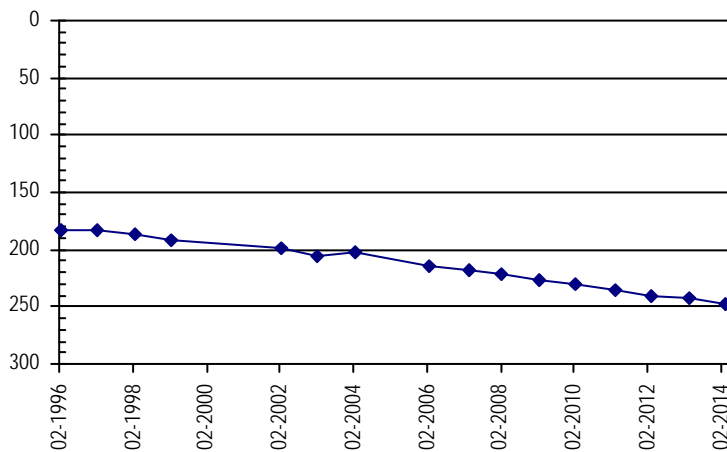
<b>Well Name:</b>	<b>SHP-38 MOORE, JOHN M.</b>	<i>Owner:</i>	MOORE, JOHN M.
<i>Permit #:</i>	10290 - F -	<i>Location #:</i>	SC03104230BAA
<i>USGS Site ID:</i>			
<i>Division:</i>	2	<i>Water District:</i>	66
		<i>County:</i>	BACA
<i>Location:</i>	Q160 Q40 Q10 Section	Twnshp Range PM	Distance from section lines:
	NW NE NE 30	31 S 42 W S	<i>From N/S line:</i> <i>From E/W line:</i>
<i>UTM Coordinates (NAD83):</i>	<i>Northing (UTM y):</i>	4134516.7	<i>Easting (UTM x):</i> 748402.2 <i>GPS</i>
<i>Latitude/Longitude (decimal degrees):</i>	37.324132		-102.196566
<i>Surface Elevation (ft):</i>	3830	<i>Top Perforated Interval (ft):</i>	<i>Base of grout (ft):</i>
<i>Well depth (ft):</i>	380	<i>Bottom Perforated Interval (ft):</i>	
<i>Aquifer(s):</i>	DOCKUM		

**Water Level Change**  
**1 year:** -5.84  
**5 year:** -22.14  
**10 year:** -45.54

### Measurements from last 10 years

Date	Depth to WL (ft)	Elev of WL (ft)	Change (ft)
2/19/2004	202.80	3627.20	3.20
2/21/2006	214.40	3615.60	-11.60
3/3/2007	217.40	3612.60	-3.00
2/22/2008	222.00	3608.00	-4.60
2/16/2009	226.20	3603.80	-4.20
2/16/2010	230.50	3599.50	-4.30
3/6/2011	235.20	3594.80	-4.70
3/10/2012	241.40	3588.60	-6.20
3/2/2013	242.50	3587.50	-1.10
3/19/2014	248.34	3581.66	-5.84

### All Historic Measurements





## SOUTHERN HIGH PLAINS

**Well Name:** **SHP-41 HOLT** **Owner:** HOLT  
**Permit #:** 3573 - F - **Location #:** SC03104308BC **USGS Site ID:**

**Division:** 2 **Water District:** 66 **County:** BACA  
**Location:** Q160 Q40 Q10 Section Twnshp Range PM Distance from section lines:  
 NW SW 8 31 S 43 W S **From N/S line:** **From E/W line:**

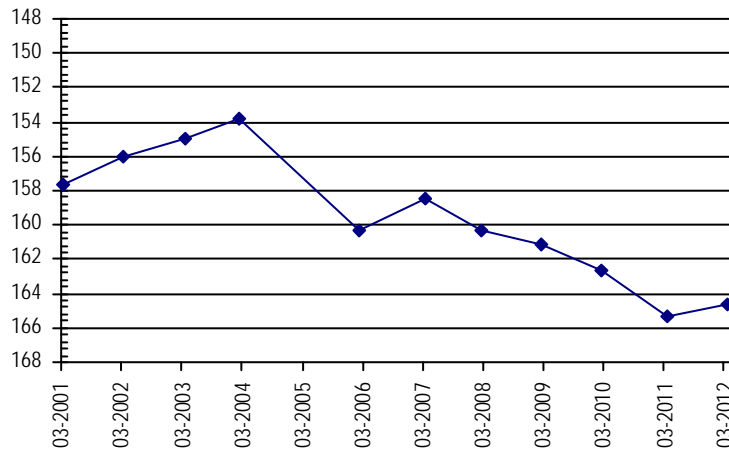
**UTM Coordinates (NAD83):** **Northing (UTM y):** 4138547.0 **Easting (UTM x):** 739560.0 *Digitized off map*  
**Latitude/Longitude (decimal degrees):** 37.362742 -102.294952

**Surface Elevation (ft):** 3960 **Top Perforated Interval (ft):** **Base of grout (ft):** **Water Level Change**  
**Well depth (ft):** 230 **Bottom Perforated Interval (ft):** **1 year:**  
**Aquifer(s):** OGALLALA **5 year:**  
 CHEYENNE **10 year:**

### Measurements from last 10 years

Date	Depth to WL (ft)	Elev of WL (ft)	Change (ft)
2/18/2004	153.80	3806.20	1.20
2/28/2006	160.30	3799.70	-6.50
3/21/2007	158.50	3801.50	1.80
2/27/2008	160.30	3799.70	-1.80
2/17/2009	161.10	3798.90	-0.80
2/27/2010	162.70	3797.30	-1.60
3/6/2011	165.30	3794.70	-2.60
3/6/2012	164.60	3795.40	0.70
3/2/2013			
3/19/2014			

### All Historic Measurements



**Well Name:** **SHP-42 BURCHFIELD, W.K.** **Owner:** BURCHFIELD, W.K.  
**Permit #:** 2529 - F - **Location #:** SC03104333BAA **USGS Site ID:** 371832102160900

**Division:** 2 **Water District:** 66 **County:** BACA  
**Location:** Q160 Q40 Q10 Section Twnshp Range PM Distance from section lines:  
 NW NE NE 33 31 S 43 W S **From N/S line:** **From E/W line:**

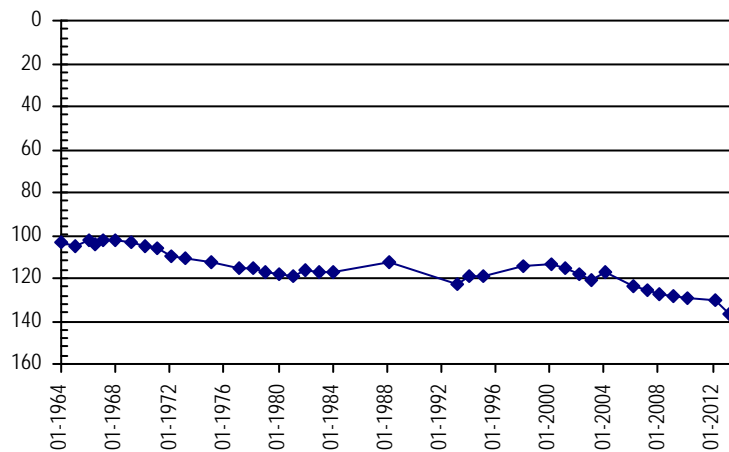
**UTM Coordinates (NAD83):** **Northing (UTM y):** 4132678.0 **Easting (UTM x):** 741975.0 *GPS*  
**Latitude/Longitude (decimal degrees):**

**Surface Elevation (ft):** 3921.56 **Top Perforated Interval (ft):** **Base of grout (ft):** **Water Level Change**  
**Well depth (ft):** 211 **Bottom Perforated Interval (ft):** **1 year:**  
**Aquifer(s):** DAKOTA **5 year:**  
**10 year:**

### Measurements from last 10 years

Date	Depth to WL (ft)	Elev of WL (ft)	Change (ft)
2/17/2004	116.80	3804.76	4.50
2/21/2006	123.50	3798.06	-6.70
3/21/2007	125.20	3796.36	-1.70
2/22/2008	127.50	3794.06	-2.30
2/15/2009	128.60	3792.96	-1.10
2/27/2010	129.00	3792.56	-0.40
3/6/2011			
3/6/2012	130.00	3791.56	
3/2/2013	136.80	3784.76	-6.80
3/19/2014			

### All Historic Measurements







## SOUTHERN HIGH PLAINS

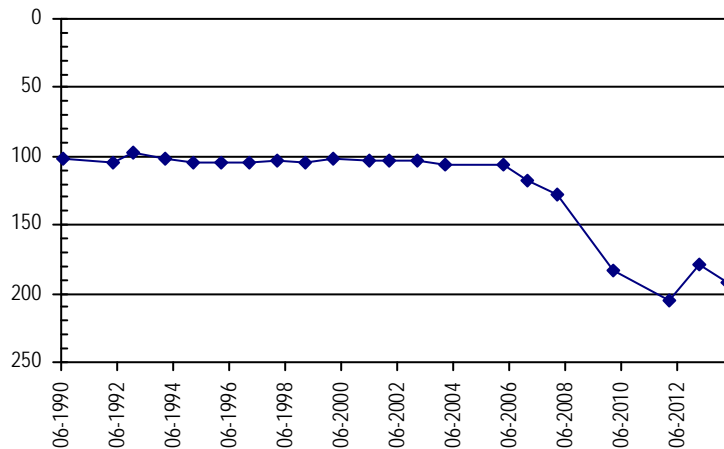
<b>Well Name:</b>	<b>SHP-45 TWN.OF SPRINGFIELD</b>	Owner:	TWN.OF SPRINGFIELD
Permit #:	6837 - F -	Location #:	SC03104604BC
		USGS Site ID:	
Division:	2	Water District:	67
		County:	BACA
Location:	Q160 Q40 Q10 Section	Twnshp Range PM	Distance from section lines:
	NW SW 4 31 S 46 W S		From N/S line: From E/W line:
UTM Coordinates (NAD83):	Northing (UTM y): 4139215.0	Easting (UTM x): 711351.0	User supplied
Latitude/Longitude (decimal degrees):	37.375613	-102.613021	
Surface Elevation (ft):	4403	Top Perforated Interval (ft):	Base of grout (ft):
Well depth (ft):	360	Bottom Perforated Interval (ft):	
Aquifer(s):	OGALLALA		
	DAKOTA		

**Water Level Change**  
**1 year:**  
**5 year:**  
**10 year:**

### Measurements from last 10 years

Date	Depth to WL (ft)	Elev of WL (ft)	Change (ft)
2/10/2004	106.25	4296.75	-2.95
3/1/2006	105.55	4297.45	0.70
1/29/2007	117.30	4285.70	-11.75
2/26/2008	128.20	4274.80	-10.90
1/1/2009			
2/28/2010	183.60	4219.40	
3/3/2011			
2/25/2012	204.70	4198.30	
3/31/2013	178.67	4224.33	26.03
3/31/2014	191.17	4211.83	-12.50

### All Historic Measurements



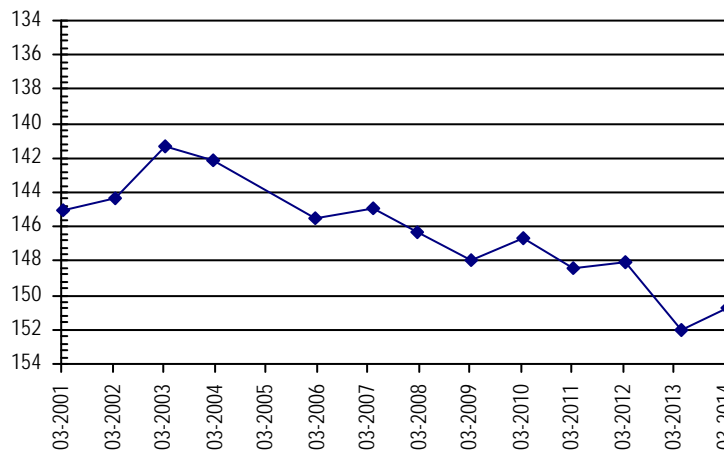
<b>Well Name:</b>	<b>SHP-46 HUMPHREY</b>	Owner:	HUMPHREY
Permit #:	10685 - F -	Location #:	SC03104632AB
		USGS Site ID:	
Division:	2	Water District:	66
		County:	BACA
Location:	Q160 Q40 Q10 Section	Twnshp Range PM	Distance from section lines:
	NE NW 32 31 S 46 W S		From N/S line: From E/W line:
UTM Coordinates (NAD83):	Northing (UTM y): 4131709.0	Easting (UTM x): 710899.0	Digitized off map
Latitude/Longitude (decimal degrees):	37.308116	-102.620257	
Surface Elevation (ft):	4432	Top Perforated Interval (ft):	Base of grout (ft):
Well depth (ft):	400	Bottom Perforated Interval (ft):	
Aquifer(s):	DAKOTA		
	CHEYENNE		

**Water Level Change**  
**1 year:** 1.24  
**5 year:** -2.76  
**10 year:** -8.66

### Measurements from last 10 years

Date	Depth to WL (ft)	Elev of WL (ft)	Change (ft)
2/18/2004	142.10	4289.90	-0.80
2/26/2006	145.50	4286.50	-3.40
4/1/2007	144.90	4287.10	0.60
2/24/2008	146.30	4285.70	-1.40
3/9/2009	148.00	4284.00	-1.70
3/12/2010	146.70	4285.30	1.30
3/13/2011	148.40	4283.60	-1.70
3/15/2012	148.10	4283.90	0.30
4/21/2013	152.00	4280.00	-3.90
3/21/2014	150.76	4281.24	1.24

### All Historic Measurements



## SOUTHERN HIGH PLAINS

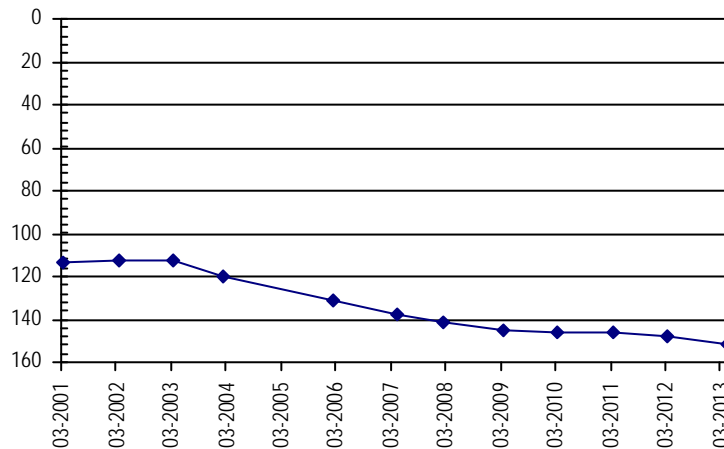
<b>Well Name:</b>	<b>SHP-47 TROY BISHOP</b>	<i>Owner:</i>	TROY BISHOP
<i>Permit #:</i>	19969 - F -	<i>Location #:</i>	SC03104714DC
<i>USGS Site ID:</i>			
<i>Division:</i>	2	<i>Water District:</i>	66
		<i>County:</i>	BACA
<i>Location:</i>	Q160 Q40 Q10 Section	Twnshp Range PM	Distance from section lines:
	SE SW 14	31 S 47 W S	From N/S line: From E/W line:
<i>UTM Coordinates (NAD83):</i>	<i>Northing (UTM y):</i>	4134848.0	<i>Easting (UTM x):</i> 705638.0 <i>Digitized off map</i>
<i>Latitude/Longitude (decimal degrees):</i>		37.337566	-102.678706
<i>Surface Elevation (ft):</i>	4590	<i>Top Perforated Interval (ft):</i>	<i>Base of grout (ft):</i>
<i>Well depth (ft):</i>	560	<i>Bottom Perforated Interval (ft):</i>	
<i>Aquifer(s):</i>	OGALLALA DAKOTA		

**Water Level Change**  
**1 year:** -3.80  
**5 year:** -10.40  
**10 year:** -38.60

### Measurements from last 10 years

Date	Depth to WL (ft)	Elev of WL (ft)	Change (ft)
2/27/2004	120.30	4469.70	-7.50
2/26/2006	131.00	4459.00	-10.70
4/1/2007	137.60	4452.40	-6.60
2/24/2008	141.00	4449.00	-3.40
3/9/2009	145.10	4444.90	-4.10
3/12/2010	146.50	4443.50	-1.40
3/12/2011	145.80	4444.20	0.70
3/15/2012	147.60	4442.40	-1.80
4/21/2013	151.40	4438.60	-3.80

### All Historic Measurements



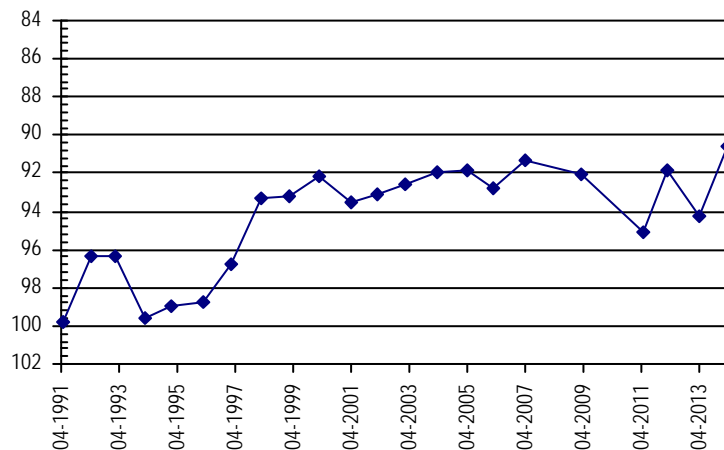
<b>Well Name:</b>	<b>SHP-48 KIRKENDALL,RBT.</b>	<i>Owner:</i>	KIRKENDALL,RBT.
<i>Permit #:</i>	29877 - P -	<i>Location #:</i>	SC03104821CAD
<i>USGS Site ID:</i>			
<i>Division:</i>	2	<i>Water District:</i>	66
		<i>County:</i>	BACA
<i>Location:</i>	Q160 Q40 Q10 Section	Twnshp Range PM	Distance from section lines:
	SW NE SE 21	31 S 48 W S	From N/S line: From E/W line:
<i>UTM Coordinates (NAD83):</i>	<i>Northing (UTM y):</i>	4133361.8	<i>Easting (UTM x):</i> 692752.8 <i>GPS</i>
<i>Latitude/Longitude (decimal degrees):</i>		37.326943	-102.824445
<i>Surface Elevation (ft):</i>	4738	<i>Top Perforated Interval (ft):</i>	<i>Base of grout (ft):</i>
<i>Well depth (ft):</i>	245	<i>Bottom Perforated Interval (ft):</i>	
<i>Aquifer(s):</i>	DAKOTA		

**Water Level Change**  
**1 year:** 3.72  
**5 year:** 1.52  
**10 year:** 1.42

### Measurements from last 10 years

Date	Depth to WL (ft)	Elev of WL (ft)	Change (ft)
3/2/2004	92.00	4646.00	0.60
3/2/2005	91.80	4646.20	0.20
2/20/2006	92.80	4645.20	-1.00
3/24/2007	91.30	4646.70	1.50
2/4/2008			
2/6/2009	92.10	4645.90	
2/24/2010			
4/12/2011	95.10	4642.90	
2/26/2012	91.80	4646.20	3.30
3/8/2013	94.30	4643.70	-2.50
3/25/2014	90.58	4647.42	3.72

### All Historic Measurements



## SOUTHERN HIGH PLAINS

**Well Name:** **SHP-49 US FOREST SERVICE** **Owner:** US FOREST SERVICE  
**Permit #:** 115545 - - **Location #:** SC03105007ACC **USGS Site ID:**

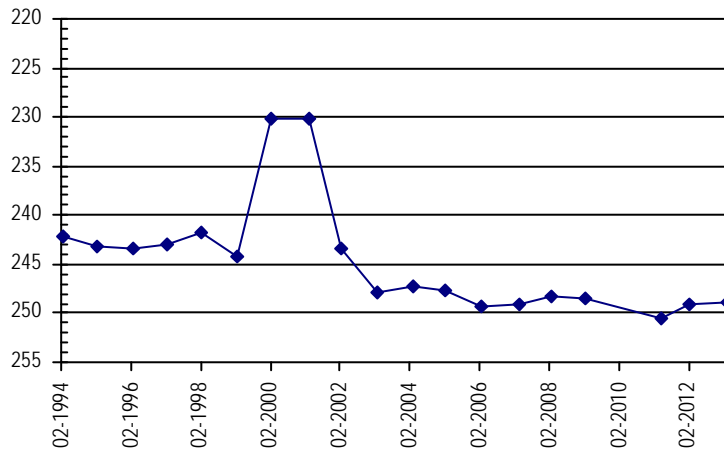
**Division:** 2 **Water District:** 67 **County:** BACA  
**Location:** Q160 Q40 Q10 Section Twnshp Range PM Distance from section lines:  
 NE SW SW 7 31 S 50 W S **From N/S line:** **From E/W line:**  
**UTM Coordinates (NAD83):** **Northing (UTM y):** 4136465.0 **Easting (UTM x):** 670348.8 *GPS*  
**Latitude/Longitude (decimal degrees):** 37.359278 -103.076462

**Surface Elevation (ft):** 5193 **Top Perforated Interval (ft):** **Base of grout (ft):** **Water Level Change**  
**Well depth (ft):** 250 **Bottom Perforated Interval (ft):** **1 year:**  
**Aquifer(s):** DAKOTA **5 year:**  
 CHEYENNE **10 year:**

### Measurements from last 10 years

Date	Depth to WL (ft)	Elev of WL (ft)	Change (ft)
3/2/2004	247.20	4945.80	0.60
2/23/2005	247.60	4945.40	-0.40
2/20/2006	249.30	4943.70	-1.70
3/24/2007	249.20	4943.80	0.10
2/8/2008	248.20	4944.80	1.00
2/6/2009	248.50	4944.50	-0.30
1/1/2010			
4/13/2011	250.50	4942.50	
2/25/2012	249.10	4943.90	1.40
3/8/2013	248.80	4944.20	0.30
3/25/2014			

### All Historic Measurements



**Well Name:** **SHP-50 HUME, J.** **Owner:** HUME, J.  
**Permit #:** 16087 - F - **Location #:** SC03204105BCC **USGS Site ID:**

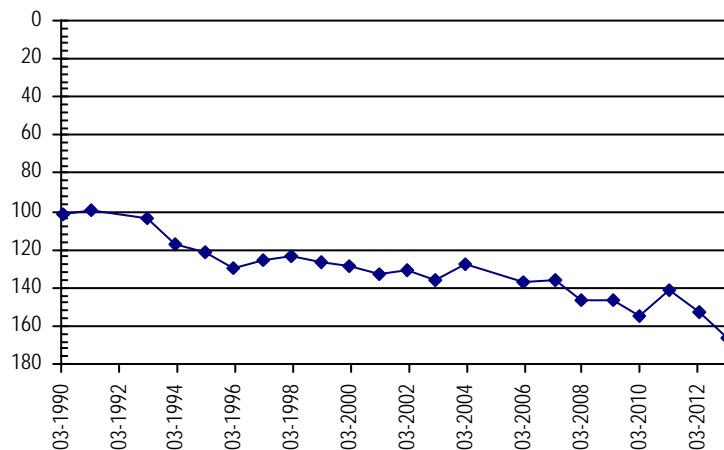
**Division:** 2 **Water District:** 66 **County:** BACA  
**Location:** Q160 Q40 Q10 Section Twnshp Range PM Distance from section lines:  
 NW SW SW 5 32 S 41 W S **From N/S line:** **From E/W line:**  
**UTM Coordinates (NAD83):** **Northing (UTM y):** 4130742.0 **Easting (UTM x):** 759168.0 *Digitized off map*  
**Latitude/Longitude (decimal degrees):** 37.287211 -102.076523

**Surface Elevation (ft):** 3692 **Top Perforated Interval (ft):** **Base of grout (ft):** **Water Level Change**  
**Well depth (ft):** 500 **Bottom Perforated Interval (ft):** **1 year:** -14.30  
**Aquifer(s):** OGALLALA **5 year:** -20.90  
 DOCKUM **10 year:** -30.60

### Measurements from last 10 years

Date	Depth to WL (ft)	Elev of WL (ft)	Change (ft)
2/16/2004	127.50	3564.50	8.80
2/21/2006	137.50	3554.50	-10.00
3/21/2007	136.50	3555.50	1.00
2/22/2008	146.00	3546.00	-9.50
3/3/2009	147.00	3545.00	-1.00
2/26/2010	154.50	3537.50	-7.50
3/6/2011	141.20	3550.80	13.30
3/6/2012	152.60	3539.40	-11.40
3/3/2013	166.90	3525.10	-14.30

### All Historic Measurements



**SOUTHERN HIGH PLAINS**

**Well Name:** **SHP-51 CECIL TRAHERN**

**Owner:** CECIL TRAHERN

**Permit #:** 18035 - FP - **Location #:** SC03204204CD

**USGS Site ID:**

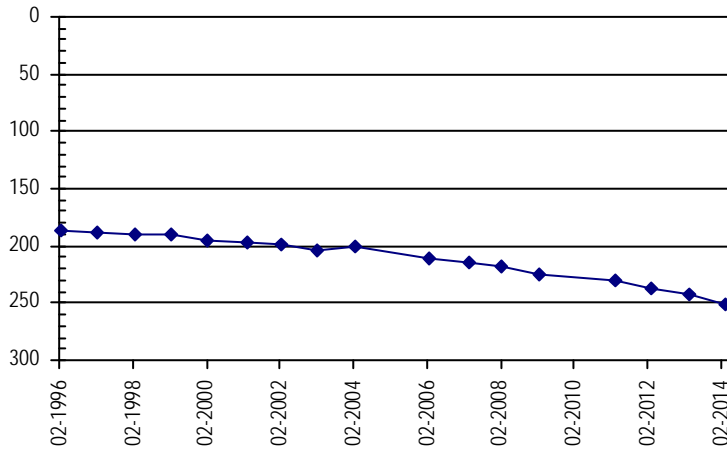
**Division:** 2 **Water District:** 66 **County:** BACA  
**Location:** Q160 Q40 Q10 Section Twnshp Range PM Distance from section lines:  
 SW SE 4 32 S 42 W S **From N/S line:** **From E/W line:**  
**UTM Coordinates (NAD83):** **Northing (UTM y):** 4130102.0 **Easting (UTM x):** 751649.0 *GPS*  
**Latitude/Longitude (decimal degrees):**

**Surface Elevation (ft):** 4100 **Top Perforated Interval (ft):** 200 **Base of grout (ft):** **Water Level Change**  
**Well depth (ft):** 424 **Bottom Perforated Interval (ft):** **1 year:** -7.81  
**Aquifer(s):** DOCKUM **5 year:** -26.01  
**10 year:** -50.01

**Measurements from last 10 years**

Date	Depth to WL (ft)	Elev of WL (ft)	Change (ft)
2/16/2004	201.00	3899.00	2.50
2/21/2006	211.20	3888.80	-10.20
3/3/2007	215.20	3884.80	-4.00
2/22/2008	218.50	3881.50	-3.30
2/16/2009	225.00	3875.00	-6.50
1/1/2010			
3/6/2011	229.50	3870.50	
3/6/2012	237.00	3863.00	-7.50
3/2/2013	243.20	3856.80	-6.20
3/19/2014	251.01	3848.99	-7.81

**All Historic Measurements**



**Well Name:** **SHP-52 BILL WRIGHT**

**Owner:** BILL WRIGHT

**Permit #:** 17021 - F - **Location #:** SC03204207CB

**USGS Site ID:**

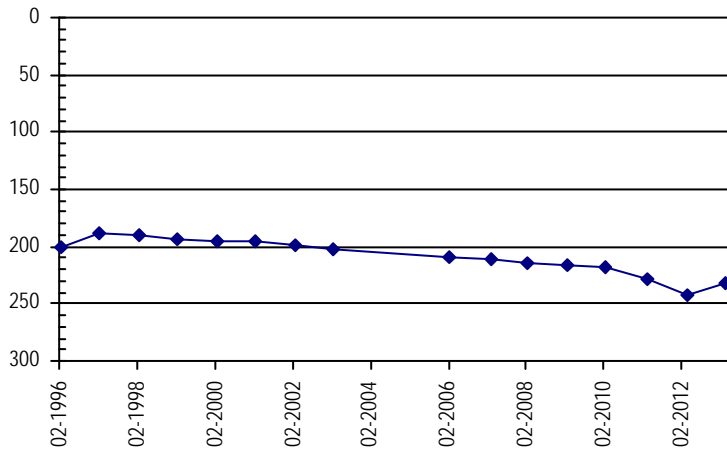
**Division:** 2 **Water District:** 66 **County:** BACA  
**Location:** Q160 Q40 Q10 Section Twnshp Range PM Distance from section lines:  
 SW NW 7 32 S 42 W S **From N/S line:** **From E/W line:**  
**UTM Coordinates (NAD83):** **Northing (UTM y):** 4127316.0 **Easting (UTM x):** 746321.0 *User supplied*  
**Latitude/Longitude (decimal degrees):** 37.259855 -102.222415

**Surface Elevation (ft):** 3828 **Top Perforated Interval (ft):** **Base of grout (ft):** **Water Level Change**  
**Well depth (ft):** 478 **Bottom Perforated Interval (ft):** **1 year:**  
**Aquifer(s):** OGALLALA **5 year:**  
**DOCKUM** **10 year:**

**Measurements from last 10 years**

Date	Depth to WL (ft)	Elev of WL (ft)	Change (ft)
2/21/2006	208.60	3619.40	-6.60
3/4/2007	210.80	3617.20	-2.20
2/22/2008	214.40	3613.60	-3.60
2/16/2009	216.80	3611.20	-2.40
2/26/2010	218.00	3610.00	-1.20
3/6/2011	228.70	3599.30	-10.70
3/10/2012	242.00	3586.00	-13.30
3/2/2013	232.70	3595.30	9.30
3/19/2014			

**All Historic Measurements**



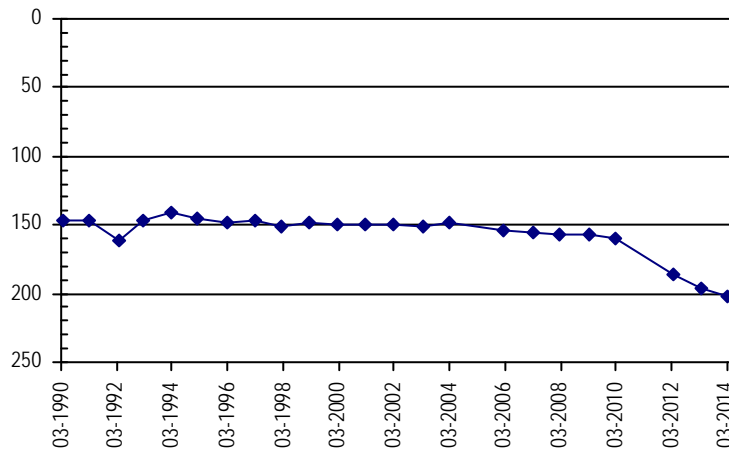
## SOUTHERN HIGH PLAINS

<b>Well Name:</b>	<b>SHP-53 HUME, CHESNA</b>	<i>Owner:</i>	HUME, CHESNA			
<i>Permit #:</i>	13925 - F -	<i>Location #:</i>	SC03204235DCB			
<i>USGS Site ID:</i>						
<i>Division:</i>	2	<i>Water District:</i>	66	<i>County:</i>	BACA	
<i>Location:</i>	Q160 Q40 Q10	Section	Twnshp	Range	PM	Distance from section lines:
	SE SW NW	35	32 S	42 W S		<i>From N/S line:</i> <i>From E/W line:</i>
<i>UTM Coordinates (NAD83):</i>	<i>Northing (UTM y):</i>	4122099.0	<i>Easting (UTM x):</i>	755374.0	<i>GPS</i>	
<i>Latitude/Longitude (decimal degrees):</i>	37.210451		-102.122234			
<i>Surface Elevation (ft):</i>	3759	<i>Top Perforated Interval (ft):</i>		<i>Base of grout (ft):</i>		<b>Water Level Change</b>
<i>Well depth (ft):</i>	408	<i>Bottom Perforated Interval (ft):</i>				<b>1 year:</b> -7.06
<i>Aquifer(s):</i>	OGALLALA					<b>5 year:</b> -45.46
	DAKOTA					<b>10 year:</b> -54.46

### Measurements from last 10 years

Date	Depth to WL (ft)	Elev of WL (ft)	Change (ft)
2/16/2004	148.30	3610.70	3.50
2/21/2006	154.70	3604.30	-6.40
3/22/2007	154.90	3604.10	-0.20
2/22/2008	156.90	3602.10	-2.00
3/8/2009	157.30	3601.70	-0.40
2/26/2010	159.30	3599.70	-2.00
3/6/2011			
3/9/2012	185.50	3573.50	
3/3/2013	195.70	3563.30	-10.20
3/19/2014	202.76	3556.24	-7.06

### All Historic Measurements

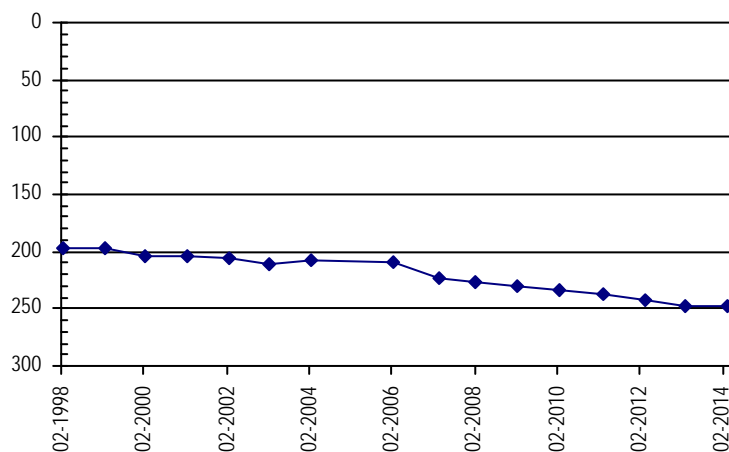


<b>Well Name:</b>	<b>SHP-54 WRIGHT, WM. F.&amp; FERN</b>	<i>Owner:</i>	WRIGHT, WM. F.& FERN			
<i>Permit #:</i>	15349 - F -	<i>Location #:</i>	SC03204301AC			
<i>USGS Site ID:</i>						
<i>Division:</i>	2	<i>Water District:</i>	66	<i>County:</i>	BACA	
<i>Location:</i>	Q160 Q40 Q10	Section	Twnshp	Range	PM	Distance from section lines:
	NE SW	1	32 S	43 W S		<i>From N/S line:</i> <i>From E/W line:</i>
<i>UTM Coordinates (NAD83):</i>	<i>Northing (UTM y):</i>	4130800.0	<i>Easting (UTM x):</i>	747038.0	<i>Digitized off map</i>	
<i>Latitude/Longitude (decimal degrees):</i>	37.291033		-102.213182			
<i>Surface Elevation (ft):</i>	3838	<i>Top Perforated Interval (ft):</i>		<i>Base of grout (ft):</i>		<b>Water Level Change</b>
<i>Well depth (ft):</i>	436	<i>Bottom Perforated Interval (ft):</i>				<b>1 year:</b> 0.97
<i>Aquifer(s):</i>	DOCKUM					<b>5 year:</b> -17.53
	ALL UNNAMED AQUIFERS					<b>10 year:</b> -39.13

### Measurements from last 10 years

Date	Depth to WL (ft)	Elev of WL (ft)	Change (ft)
2/16/2004	207.90	3630.10	2.40
2/21/2006	208.60	3629.40	-0.70
3/4/2007	223.30	3614.70	-14.70
2/22/2008	226.30	3611.70	-3.00
2/15/2009	229.50	3608.50	-3.20
2/26/2010	233.00	3605.00	-3.50
3/5/2011	236.50	3601.50	-3.50
3/10/2012	242.00	3596.00	-5.50
3/2/2013	248.00	3590.00	-6.00
3/19/2014	247.03	3590.97	0.97

### All Historic Measurements









## SOUTHERN HIGH PLAINS

**Well Name:** **SHP-59 LMS**

**Owner:** LMS

**Permit #:** 5344 - F - **Location #:** SC03204519CC **USGS Site ID:**

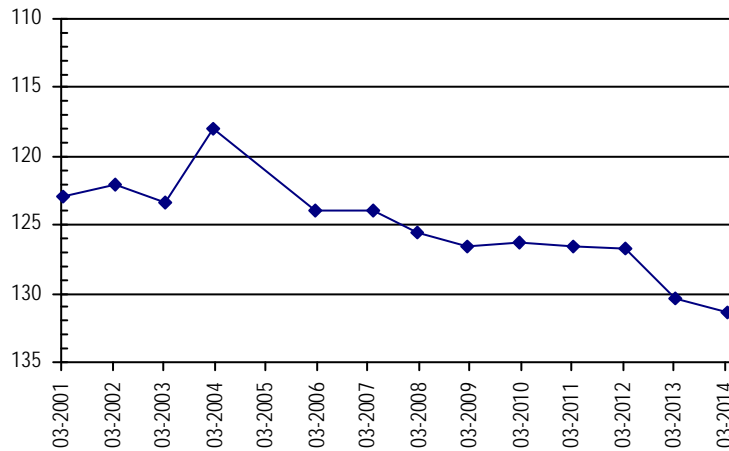
**Division:** 2 **Water District:** 66 **County:** BACA  
**Location:** Q160 Q40 Q10 Section Twnshp Range PM Distance from section lines:  
 SW SW 19 32 S 45 W S **From N/S line:** **From E/W line:**  
**UTM Coordinates (NAD83):** **Northing (UTM y):** 4123923.6 **Easting (UTM x):** 718321.8 *GPS*  
**Latitude/Longitude (decimal degrees):** 37.236290 -102.538853

**Surface Elevation (ft):** 4320 **Top Perforated Interval (ft):** **Base of grout (ft):** **Water Level Change**  
**Well depth (ft):** 220 **Bottom Perforated Interval (ft):** **1 year:** -1.10  
**Aquifer(s):** OGALLALA **5 year:** -4.90  
 Kdp **10 year:** -13.40

**Measurements from last 10 years**

Date	Depth to WL (ft)	Elev of WL (ft)	Change (ft)
2/18/2004	118.00	4202.00	5.30
2/26/2006	124.00	4196.00	-6.00
4/1/2007	124.00	4196.00	0.00
2/24/2008	125.50	4194.50	-1.50
2/14/2009	126.50	4193.50	-1.00
2/28/2010	126.30	4193.70	0.20
3/10/2011	126.50	4193.50	-0.20
3/19/2012	126.70	4193.30	-0.20
3/2/2013	130.30	4189.70	-3.60
3/20/2014	131.40	4188.60	-1.10

**All Historic Measurements**



**Well Name:** **SHP-60 CRANE, W.**

**Owner:** CRANE, W.

**Permit #:** 11187 - F - **Location #:** SC03204609AAD **USGS Site ID:**

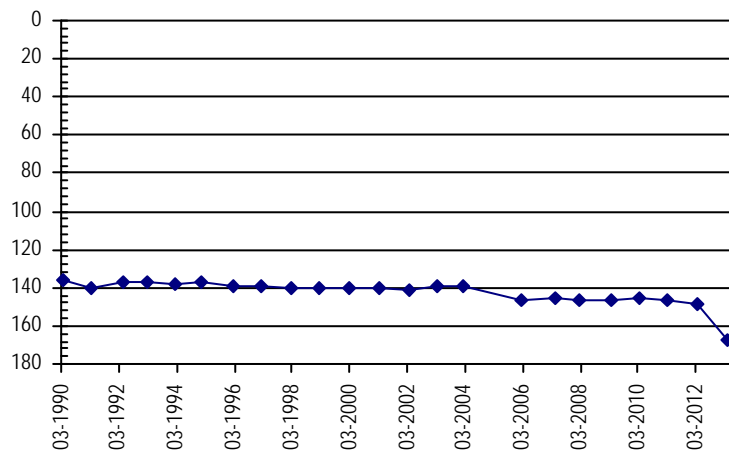
**Division:** 2 **Water District:** 66 **County:** BACA  
**Location:** Q160 Q40 Q10 Section Twnshp Range PM Distance from section lines:  
 NE NE SE 9 32 S 46 W S **From N/S line:** **From E/W line:**  
**UTM Coordinates (NAD83):** **Northing (UTM y):** 4128197.7 **Easting (UTM x):** 713026.8 *GPS*  
**Latitude/Longitude (decimal degrees):** 37.276007 -102.597272

**Surface Elevation (ft):** 4404 **Top Perforated Interval (ft):** **Base of grout (ft):** **Water Level Change**  
**Well depth (ft):** 400 **Bottom Perforated Interval (ft):** **1 year:**  
**Aquifer(s):** DAKOTA **5 year:**  
 CHEYENNE **10 year:**

**Measurements from last 10 years**

Date	Depth to WL (ft)	Elev of WL (ft)	Change (ft)
2/18/2004	139.00	4265.00	0.30
2/26/2006	146.20	4257.80	-7.20
4/1/2007	145.20	4258.80	1.00
2/24/2008	146.00	4258.00	-0.80
3/9/2009	147.00	4257.00	-1.00
3/12/2010	145.30	4258.70	1.70
3/5/2011	146.60	4257.40	-1.30
3/15/2012	148.20	4255.80	-1.60
4/21/2013	167.50	4236.50	-19.30
3/20/2014			

**All Historic Measurements**





## SOUTHERN HIGH PLAINS

**Well Name:** **SHP-63 MIDWAY TRUST**

**Owner:** MIDWAY TRUST

**Permit #:** 21235 - F - **Location #:** SC03304313DC

**USGS Site ID:**

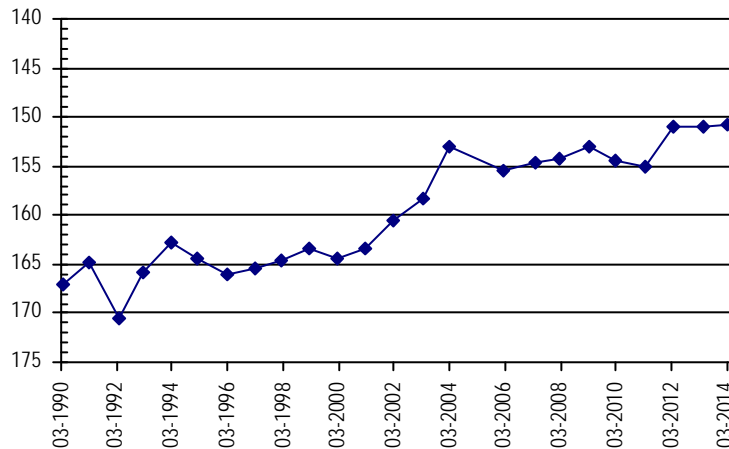
**Division:** 2 **Water District:** 66 **County:** BACA  
**Location:** Q160 Q40 Q10 Section Twnshp Range PM Distance from section lines:  
 SE SW 13 33 S 43 W S **From N/S line:** **From E/W line:**  
**UTM Coordinates (NAD83):** **Northing (UTM y):** 4116841.5 **Easting (UTM x):** 747450.3 **GPS**  
**Latitude/Longitude (decimal degrees):** 37.165250 -102.213168

**Surface Elevation (ft):** 3880 **Top Perforated Interval (ft):** **Base of grout (ft):** **Water Level Change**  
**Well depth (ft):** 420 **Bottom Perforated Interval (ft):** **1 year:** 0.04  
**Aquifer(s):** DOCKUM **5 year:** 2.14  
**10 year:** 2.14

**Measurements from last 10 years**

Date	Depth to WL (ft)	Elev of WL (ft)	Change (ft)
2/22/2004	153.00	3727.00	5.40
2/21/2006	155.40	3724.60	-2.40
4/1/2007	154.60	3725.40	0.80
2/26/2008	154.20	3725.80	0.40
3/8/2009	153.00	3727.00	1.20
2/27/2010	154.50	3725.50	-1.50
3/12/2011	155.00	3725.00	-0.50
3/19/2012	151.00	3729.00	4.00
4/20/2013	150.90	3729.10	0.10
3/26/2014	150.86	3729.14	0.04

**All Historic Measurements**



**Well Name:** **SHP-64 STAFFORD BROS.**

**Owner:** STAFFORD BROS.

**Permit #:** 11026 - F - **Location #:** SC03304319DA

**USGS Site ID:**

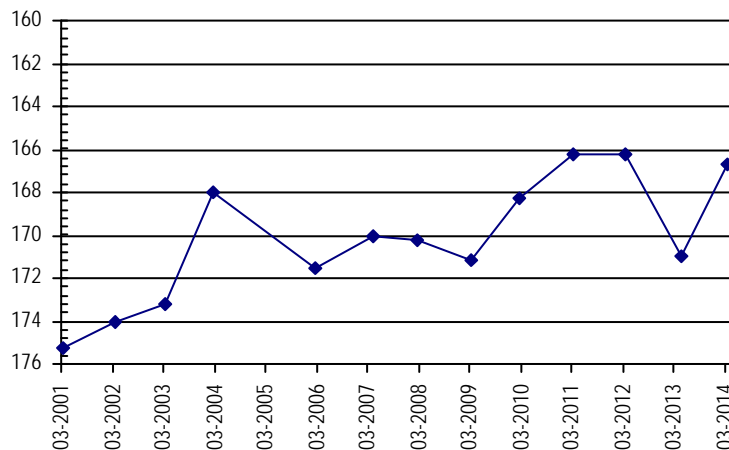
**Division:** 2 **Water District:** 66 **County:** BACA  
**Location:** Q160 Q40 Q10 Section Twnshp Range PM Distance from section lines:  
 SE NE 19 33 S 43 W S **From N/S line:** **From E/W line:**  
**UTM Coordinates (NAD83):** **Northing (UTM y):** 4115647.5 **Easting (UTM x):** 740212.2 **GPS**  
**Latitude/Longitude (decimal degrees):** 37.156387 -102.294984

**Surface Elevation (ft):** 3985 **Top Perforated Interval (ft):** **Base of grout (ft):** **Water Level Change**  
**Well depth (ft):** 260 **Bottom Perforated Interval (ft):** **1 year:** 4.33  
**Aquifer(s):** DAKOTA **5 year:** 4.53  
**10 year:** 1.33

**Measurements from last 10 years**

Date	Depth to WL (ft)	Elev of WL (ft)	Change (ft)
2/22/2004	168.00	3817.00	5.20
2/25/2006	171.50	3813.50	-3.50
4/1/2007	170.00	3815.00	1.50
2/23/2008	170.20	3814.80	-0.20
3/9/2009	171.20	3813.80	-1.00
2/27/2010	168.30	3816.70	2.90
3/6/2011	166.20	3818.80	2.10
3/19/2012	166.20	3818.80	0.00
4/21/2013	171.00	3814.00	-4.80
3/26/2014	166.67	3818.33	4.33

**All Historic Measurements**



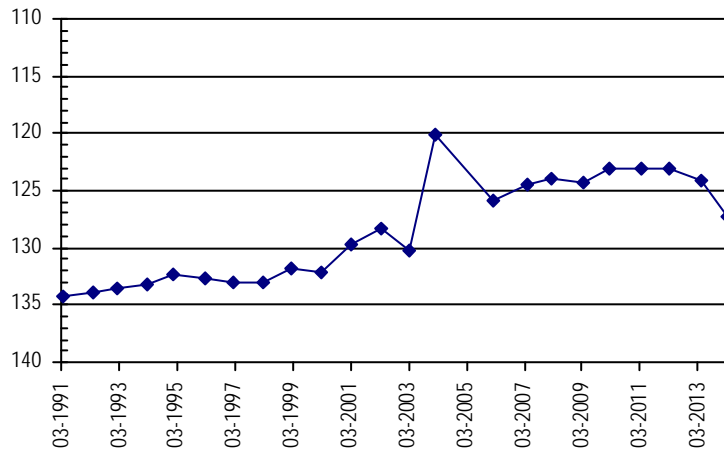
## SOUTHERN HIGH PLAINS

**Well Name:** **SHP-65 U.S.FOREST SERVICE** **Owner:** U.S.FOREST SERVICE  
**Permit #:** 128624 - P - **Location #:** SC03304417CBA **USGS Site ID:**  
**Division:** 2 **Water District:** 66 **County:** BACA  
**Location:** Q160 Q40 Q10 Section Twnshp Range PM Distance from section lines:  
 SW NW NE 17 33 S 44 W S **From N/S line:** **From E/W line:**  
**UTM Coordinates (NAD83):** **Northing (UTM y):** 4116908.5 **Easting (UTM x):** 729723.0 *GPS*  
**Latitude/Longitude (decimal degrees):** 37.170379 -102.412603  
**Surface Elevation (ft):** 4130 **Top Perforated Interval (ft):** **Base of grout (ft):** **Water Level Change**  
**Well depth (ft):** 240 **Bottom Perforated Interval (ft):** **1 year:** -3.20  
**Aquifer(s):** DAKOTA **5 year:** -2.95  
**10 year:** -7.15

### Measurements from last 10 years

Date	Depth to WL (ft)	Elev of WL (ft)	Change (ft)
2/22/2004	120.15	4009.85	10.00
2/25/2006	125.85	4004.15	-5.70
4/1/2007	124.45	4005.55	1.40
2/23/2008	124.00	4006.00	0.45
3/9/2009	124.35	4005.65	-0.35
2/27/2010	123.15	4006.85	1.20
3/6/2011	123.00	4007.00	0.15
3/19/2012	123.10	4006.90	-0.10
4/21/2013	124.10	4005.90	-1.00
3/25/2014	127.30	4002.70	-3.20

### All Historic Measurements

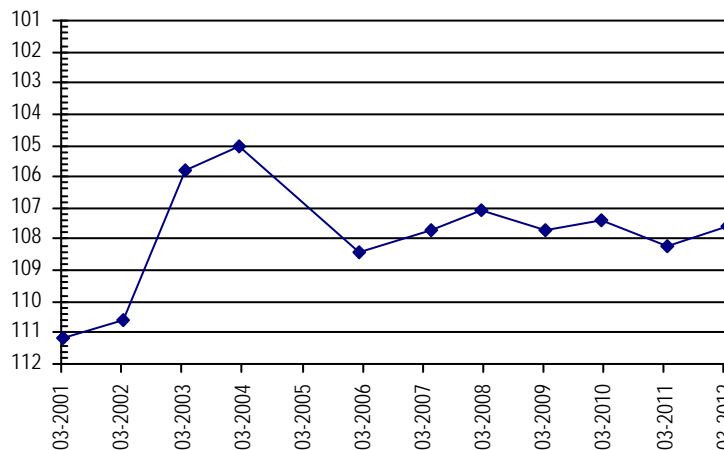


**Well Name:** **SHP-66 SCHRODER** **Owner:** SCHRODER  
**Permit #:** 75961 - - **Location #:** SC03304515DD **USGS Site ID:**  
**Division:** 2 **Water District:** 66 **County:** BACA  
**Location:** Q160 Q40 Q10 Section Twnshp Range PM Distance from section lines:  
 SE SE 15 33 S 45 W S **From N/S line:** **From E/W line:**  
**UTM Coordinates (NAD83):** **Northing (UTM y):** 4116106.5 **Easting (UTM x):** 724549.9 *GPS*  
**Latitude/Longitude (decimal degrees):** 37.164414 -102.471056  
**Surface Elevation (ft):** 4200 **Top Perforated Interval (ft):** **Base of grout (ft):** **Water Level Change**  
**Well depth (ft):** 245 **Bottom Perforated Interval (ft):** **1 year:**  
**Aquifer(s):** **5 year:**  
**10 year:**

### Measurements from last 10 years

Date	Depth to WL (ft)	Elev of WL (ft)	Change (ft)
2/27/2004	105.00	4095.00	0.80
2/26/2006	108.40	4091.60	-3.40
4/1/2007	107.70	4092.30	0.70
2/24/2008	107.10	4092.90	0.60
3/9/2009	107.70	4092.30	-0.60
2/27/2010	107.40	4092.60	0.30
3/6/2011	108.20	4091.80	-0.80
3/19/2012	107.60	4092.40	0.60
4/20/2013			
3/25/2014			

### All Historic Measurements



## SOUTHERN HIGH PLAINS

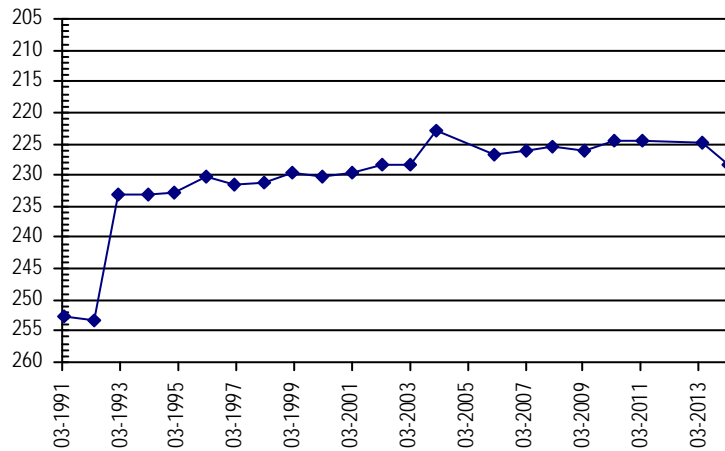
<b>Well Name:</b>	<b>SHP-67 FARMERS HOME ADMTN.</b>	<i>Owner:</i>	FARMERS HOME ADMTN.
<i>Permit #:</i>	19813 - F -	<i>Location #:</i>	SC03304626BBB
		<i>USGS Site ID:</i>	
<i>Division:</i>	2	<i>Water District:</i>	66
		<i>County:</i>	BACA
<i>Location:</i>	Q160 Q40 Q10 Section	Twnshp Range PM	Distance from section lines:
	NW NW NW 26	33 S 46 W S	<i>From N/S line:</i> <i>From E/W line:</i>
<i>UTM Coordinates (NAD83):</i>	<i>Northing (UTM y):</i>	4114077.5	<i>Easting (UTM x):</i> 715155.8 <i>GPS</i>
<i>Latitude/Longitude (decimal degrees):</i>		37.148351	-102.577351
<i>Surface Elevation (ft):</i>	4340	<i>Top Perforated Interval (ft):</i>	<i>Base of grout (ft):</i>
<i>Well depth (ft):</i>	380	<i>Bottom Perforated Interval (ft):</i>	
<i>Aquifer(s):</i>	CHEYENNE		

**Water Level Change**  
**1 year:** -3.39  
**5 year:** -2.09  
**10 year:** -5.29

### Measurements from last 10 years

Date	Depth to WL (ft)	Elev of WL (ft)	Change (ft)
2/22/2004	222.90	4117.10	5.30
2/25/2006	226.90	4113.10	-4.00
3/22/2007	226.10	4113.90	0.80
2/24/2008	225.50	4114.50	0.60
3/9/2009	226.10	4113.90	-0.60
3/12/2010	224.50	4115.50	1.60
3/13/2011	224.50	4115.50	0.00
3/15/2012			
4/21/2013	224.80	4115.20	
3/25/2014	228.19	4111.81	-3.39

### All Historic Measurements



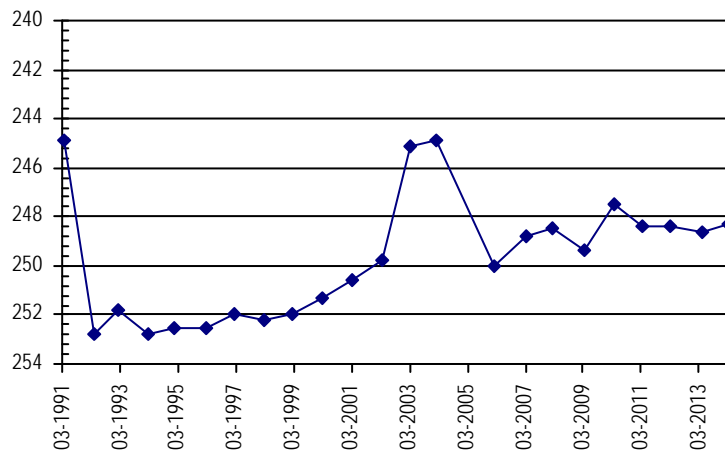
<b>Well Name:</b>	<b>SHP-68 OMALLEY</b>	<i>Owner:</i>	OMALLEY
<i>Permit #:</i>	20427 - F -	<i>Location #:</i>	SC03304630AA
		<i>USGS Site ID:</i>	
<i>Division:</i>	2	<i>Water District:</i>	66
		<i>County:</i>	BACA
<i>Location:</i>	Q160 Q40 Q10 Section	Twnshp Range PM	Distance from section lines:
	NE NE 30	33 S 46 W S	<i>From N/S line:</i> <i>From E/W line:</i>
<i>UTM Coordinates (NAD83):</i>	<i>Northing (UTM y):</i>	4113809.5	<i>Easting (UTM x):</i> 708573.8 <i>GPS</i>
<i>Latitude/Longitude (decimal degrees):</i>		37.147429	-102.651481
<i>Surface Elevation (ft):</i>	4435	<i>Top Perforated Interval (ft):</i>	<i>Base of grout (ft):</i>
<i>Well depth (ft):</i>	535	<i>Bottom Perforated Interval (ft):</i>	
<i>Aquifer(s):</i>	DAKOTA		
	CHEYENNE		

**Water Level Change**  
**1 year:** 0.31  
**5 year:** 1.11  
**10 year:** -3.39

### Measurements from last 10 years

Date	Depth to WL (ft)	Elev of WL (ft)	Change (ft)
2/14/2004	244.90	4190.10	0.20
2/25/2006	250.00	4185.00	-5.10
3/22/2007	248.80	4186.20	1.20
2/24/2008	248.50	4186.50	0.30
3/9/2009	249.40	4185.60	-0.90
3/12/2010	247.50	4187.50	1.90
3/13/2011	248.40	4186.60	-0.90
3/15/2012	248.40	4186.60	0.00
4/20/2013	248.60	4186.40	-0.20
3/25/2014	248.29	4186.71	0.31

### All Historic Measurements



## SOUTHERN HIGH PLAINS

**Well Name:** SHP-69 RAY SIKES

**Owner:** RAY SIKES

**Permit #:** 15029 - F - **Location #:** SC03305006CAD **USGS Site ID:**

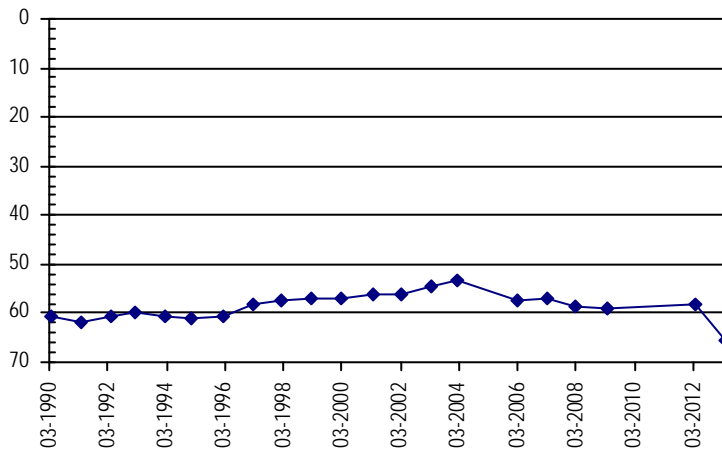
**Division:** 2 **Water District:** 66 **County:** BACA  
**Location:** Q160 Q40 Q10 Section Twnshp Range PM Distance from section lines:  
 SW NE SE 6 33 S 50 W S **From N/S line:** **From E/W line:**  
**UTM Coordinates (NAD83):** **Northing (UTM y):** 4118438.8 **Easting (UTM x):** 670616.6 *GPS*  
**Latitude/Longitude (decimal degrees):** 37.196832 -103.077575

**Surface Elevation (ft):** 5001 **Top Perforated Interval (ft):** **Base of grout (ft):** **Water Level Change**  
**Well depth (ft):** 140 **Bottom Perforated Interval (ft):** **1 year:**  
**Aquifer(s):** DAKOTA **5 year:**  
 CHEYENNE **10 year:**

**Measurements from last 10 years**

Date	Depth to WL (ft)	Elev of WL (ft)	Change (ft)
2/17/2004	53.25	4947.75	1.25
2/25/2006	57.20	4943.80	-3.95
3/22/2007	57.00	4944.00	0.20
2/24/2008	58.75	4942.25	-1.75
3/9/2009	59.20	4941.80	-0.45
3/13/2011			
3/15/2012	58.20	4942.80	
4/20/2013	65.40	4935.60	-7.20
3/25/2014			

**All Historic Measurements**



**Well Name:** SHP-70 GARY & TIM WHITE

**Owner:** GARY & TIM WHITE

**Permit #:** 23774 - F - **Location #:** SC03404122BA **USGS Site ID:**

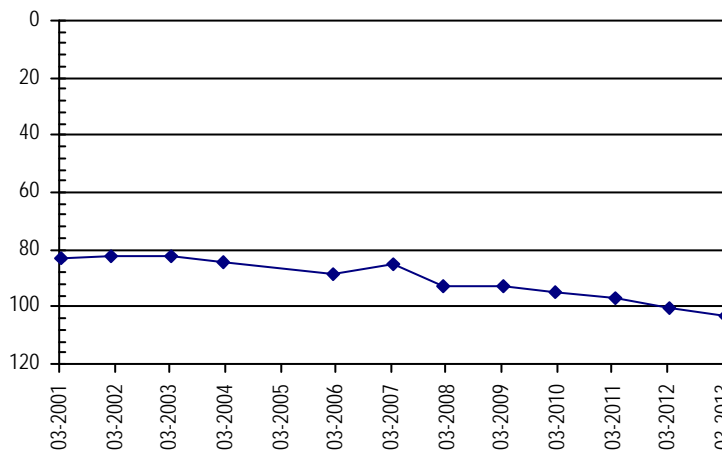
**Division:** 2 **Water District:** 66 **County:** BACA  
**Location:** Q160 Q40 Q10 Section Twnshp Range PM Distance from section lines:  
 NW NE 22 34 S 41 W S **From N/S line:** **From E/W line:**  
**UTM Coordinates (NAD83):** **Northing (UTM y):** 4107649.5 **Easting (UTM x):** 762252.5 *GPS*  
**Latitude/Longitude (decimal degrees):** 37.078465 -102.049875

**Surface Elevation (ft):** **Top Perforated Interval (ft):** **Base of grout (ft):** **Water Level Change**  
**Well depth (ft):** 103 **Bottom Perforated Interval (ft):** **1 year:**  
**Aquifer(s):** OGALLALA **5 year:**  
 DOCKUM **10 year:**

**Measurements from last 10 years**

Date	Depth to WL (ft)	Elev of WL (ft)	Change (ft)
2/16/2004	84.20		-2.00
2/23/2006	88.50		-4.30
3/22/2007	85.00		3.50
2/23/2008	92.50		-7.50
3/8/2009	92.50		0.00
2/27/2010	95.00		-2.50
3/6/2011	96.80		-1.80
3/9/2012	100.20		-3.40
3/3/2013	103.10		-2.90
3/25/2014			

**All Historic Measurements**



## SOUTHERN HIGH PLAINS

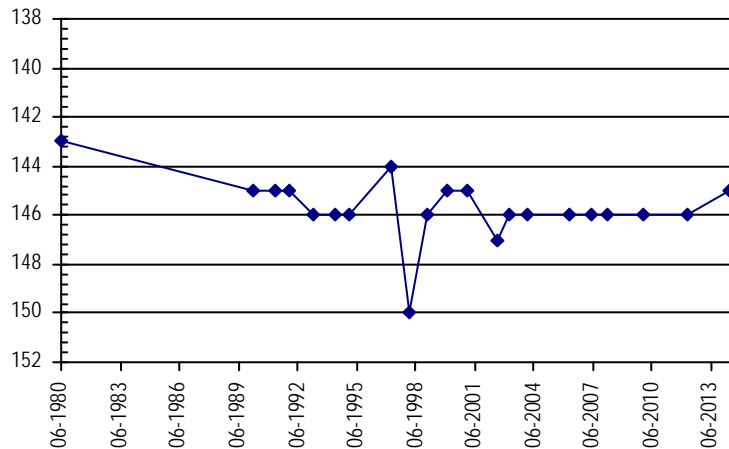
<b>Well Name:</b>	<b>SHP-71 COLO.INTRST.GAS 1</b>	<i>Owner:</i>	COLO.INTRST.GAS
<i>Permit #:</i>	112906 - -	<i>Location #:</i>	SC03404205ADA1
		<i>USGS Site ID:</i>	
<i>Division:</i>	2	<i>Water District:</i>	66
		<i>County:</i>	BACA
<i>Location:</i>	Q160 Q40 Q10 Section	Twnshp Range PM	Distance from section lines:
	NE SE NE 5	34 S 42 W S	<i>From N/S line:</i> <i>From E/W line:</i>
<i>UTM Coordinates (NAD83):</i>	<i>Northing (UTM y):</i>	4111405.8	<i>Easting (UTM x):</i> 750365.7 <i>Spotted from quarters</i>
<i>Latitude/Longitude (decimal degrees):</i>		37.115532	-102.182190
<i>Surface Elevation (ft):</i>	3828	<i>Top Perforated Interval (ft):</i>	<i>Base of grout (ft):</i>
<i>Well depth (ft):</i>	394	<i>Bottom Perforated Interval (ft):</i>	
<i>Aquifer(s):</i>	DOCKUM		

**Water Level Change**  
**1 year:**  
**5 year:**  
**10 year:**

### Measurements from last 10 years

Date	Depth to WL (ft)	Elev of WL (ft)	Change (ft)
2/28/2004	146.00	3682.00	0.00
3/11/2006	146.00	3682.00	0.00
4/4/2007	146.00	3682.00	0.00
2/27/2008	146.00	3682.00	0.00
1/1/2009			
12/16/2009	146.00	3682.00	
3/3/2011			
3/21/2012	146.00	3682.00	
3/1/2013			
4/30/2014	145.00	3683.00	

### All Historic Measurements



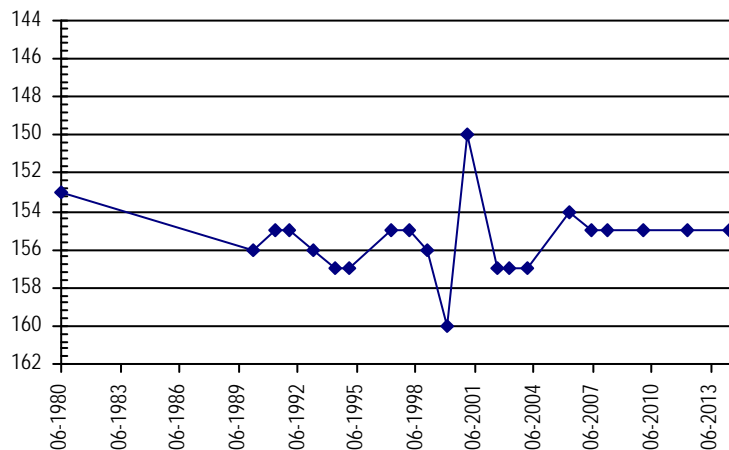
<b>Well Name:</b>	<b>SHP-72 COLO INTERST GAS 2</b>	<i>Owner:</i>	COLO INTERST GAS
<i>Permit #:</i>	112907 - -	<i>Location #:</i>	SC03404205ADA2
		<i>USGS Site ID:</i>	
<i>Division:</i>	2	<i>Water District:</i>	66
		<i>County:</i>	BACA
<i>Location:</i>	Q160 Q40 Q10 Section	Twnshp Range PM	Distance from section lines:
	NE SE NE 5	34 S 42 W S	<i>From N/S line:</i> <i>From E/W line:</i>
<i>UTM Coordinates (NAD83):</i>	<i>Northing (UTM y):</i>	4111405.8	<i>Easting (UTM x):</i> 750365.7 <i>Spotted from quarters</i>
<i>Latitude/Longitude (decimal degrees):</i>		37.115532	-102.182190
<i>Surface Elevation (ft):</i>	3826	<i>Top Perforated Interval (ft):</i>	<i>Base of grout (ft):</i>
<i>Well depth (ft):</i>	357	<i>Bottom Perforated Interval (ft):</i>	
<i>Aquifer(s):</i>	DOCKUM		

**Water Level Change**  
**1 year:**  
**5 year:**  
**10 year:**

### Measurements from last 10 years

Date	Depth to WL (ft)	Elev of WL (ft)	Change (ft)
2/28/2004	157.00	3669.00	0.00
3/11/2006	154.00	3672.00	3.00
4/4/2007	155.00	3671.00	-1.00
2/27/2008	155.00	3671.00	0.00
1/1/2009			
12/16/2009	155.00	3671.00	
3/3/2011			
3/21/2012	155.00	3671.00	
3/1/2013			
4/30/2014	155.00	3671.00	0.00

### All Historic Measurements







## SOUTHERN HIGH PLAINS

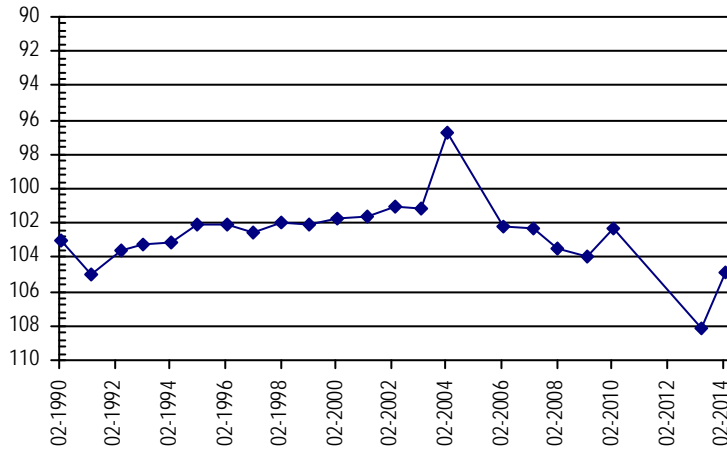
<b>Well Name:</b>	<b>SHP-75 ALLEY LAND &amp; CAT.</b>	<i>Owner:</i>	ALLEY LAND & CAT.
<i>Permit #:</i>	3232 - F -	<i>Location #:</i>	SC03404309CD
<i>USGS Site ID:</i>			
<i>Division:</i>	2	<i>Water District:</i>	67
		<i>County:</i>	BACA
<i>Location:</i>	Q160 Q40 Q10 Section	Twnshp Range PM	Distance from section lines:
	SW SE 9	34 S 43 W S	<i>From N/S line:</i> <i>From E/W line:</i>
<i>UTM Coordinates (NAD83):</i>	<i>Northing (UTM y):</i>	4148970.7	<i>Easting (UTM x):</i> 741170.1 <i>GPS</i>
<i>Latitude/Longitude (decimal degrees):</i>		37.456176	-102.273388
<i>Surface Elevation (ft):</i>	3965	<i>Top Perforated Interval (ft):</i>	<i>Base of grout (ft):</i>
<i>Well depth (ft):</i>	365	<i>Bottom Perforated Interval (ft):</i>	
<i>Aquifer(s):</i>	DOCKUM		

**Water Level Change**  
**1 year:** 3.26  
**5 year:** -0.84  
**10 year:** -8.04

### Measurements from last 10 years

Date	Depth to WL (ft)	Elev of WL (ft)	Change (ft)
2/18/2004	96.80	3868.20	4.40
2/25/2006	102.20	3862.80	-5.40
3/22/2007	102.30	3862.70	-0.10
2/23/2008	103.50	3861.50	-1.20
3/9/2009	104.00	3861.00	-0.50
2/27/2010	102.30	3862.70	1.70
3/6/2011			
3/19/2012			
4/20/2013	108.10	3856.90	
3/26/2014	104.84	3860.16	3.26

### All Historic Measurements



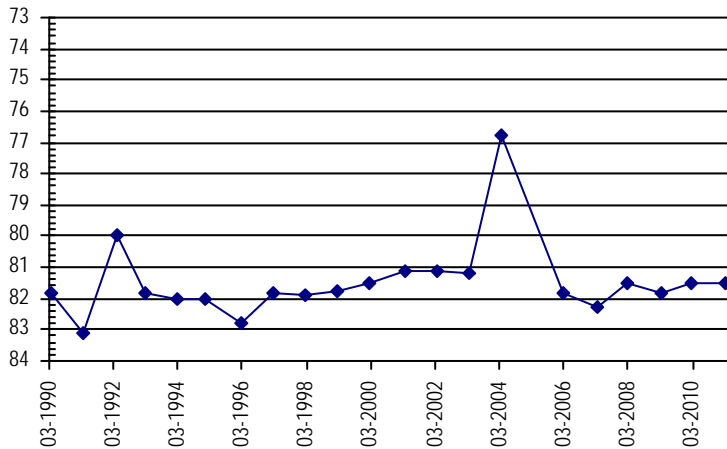
<b>Well Name:</b>	<b>SHP-76 ALLEY LAND &amp; CATTLE</b>	<i>Owner:</i>	ALLEY LAND & CATTLE
<i>Permit #:</i>	29421 - -	<i>Location #:</i>	SC03404320DD
<i>USGS Site ID:</i>			
<i>Division:</i>	2	<i>Water District:</i>	66
		<i>County:</i>	BACA
<i>Location:</i>	Q160 Q40 Q10 Section	Twnshp Range PM	Distance from section lines:
	SE SE 20	34 S 43 W S	<i>From N/S line:</i> <i>From E/W line:</i>
<i>UTM Coordinates (NAD83):</i>	<i>Northing (UTM y):</i>	4105113.3	<i>Easting (UTM x):</i> 739383.2 <i>GPS</i>
<i>Latitude/Longitude (decimal degrees):</i>		37.061747	-102.307672
<i>Surface Elevation (ft):</i>	3863	<i>Top Perforated Interval (ft):</i>	<i>Base of grout (ft):</i>
<i>Well depth (ft):</i>	330	<i>Bottom Perforated Interval (ft):</i>	
<i>Aquifer(s):</i>	DOCKUM		

**Water Level Change**  
**1 year:**  
**5 year:**  
**10 year:**

### Measurements from last 10 years

Date	Depth to WL (ft)	Elev of WL (ft)	Change (ft)
3/18/2004	76.80	3786.20	4.40
2/25/2006	81.80	3781.20	-5.00
3/22/2007	82.30	3780.70	-0.50
2/23/2008	81.50	3781.50	0.80
3/9/2009	81.80	3781.20	-0.30
2/27/2010	81.50	3781.50	0.30
3/6/2011	81.50	3781.50	0.00
3/16/2012			
4/20/2013			
3/26/2014			

### All Historic Measurements







## SOUTHERN HIGH PLAINS

**Well Name:** **SHP-81 USDA FOREST SERV.** **Owner:** USDA FOREST SERV.  
**Permit #:** - - **Location #:** SC03404826DDC **USGS Site ID:** 370243102465000

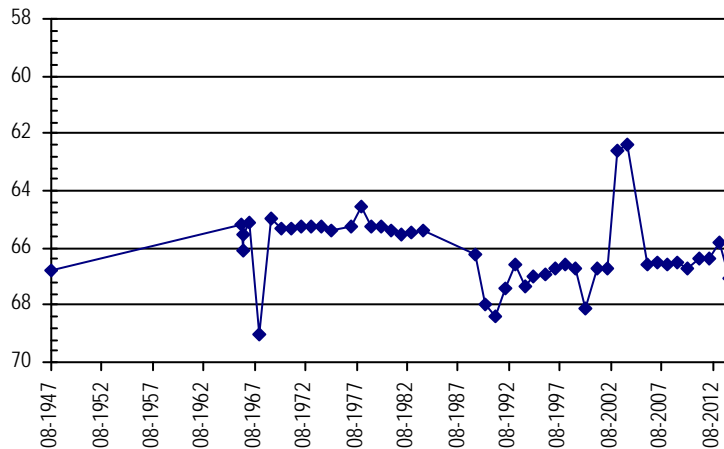
**Division:** 2 **Water District:** 66 **County:** BACA  
**Location:** Q160 Q40 Q10 Section Twnshp Range PM Distance from section lines:  
 SE SE SW 26 34 S 48 W S **From N/S line:** **From E/W line:**  
**UTM Coordinates (NAD83):** **Northing (UTM y):** 4102717.4 **Easting (UTM x):** 697204.6 *GPS*  
**Latitude/Longitude (decimal degrees):** 37.049984 -102.782322

**Surface Elevation (ft):** 4532.15 **Top Perforated Interval (ft):** **Base of grout (ft):** **Water Level Change**  
**Well depth (ft):** 88 **Bottom Perforated Interval (ft):** **1 year:** -1.29  
**Aquifer(s):** DAKOTA **5 year:** -0.59  
**10 year:** -4.69

### Measurements from last 10 years

Date	Depth to WL (ft)	Elev of WL (ft)	Change (ft)
2/17/2004	62.40	4469.75	0.20
2/21/2006	66.60	4465.55	-4.20
3/22/2007	66.50	4465.65	0.10
2/24/2008	66.60	4465.55	-0.10
3/9/2009	66.50	4465.65	0.10
3/12/2010	66.70	4465.45	-0.20
3/13/2011	66.40	4465.75	0.30
3/15/2012	66.40	4465.75	0.00
4/21/2013	65.80	4466.35	0.60
3/25/2014	67.09	4465.06	-1.29

### All Historic Measurements



**Well Name:** **SHP-82 KIM SWEARINGEN** **Owner:** KIM SWEARINGEN  
**Permit #:** 49633 - F - **Location #:** SC03504104DD **USGS Site ID:**

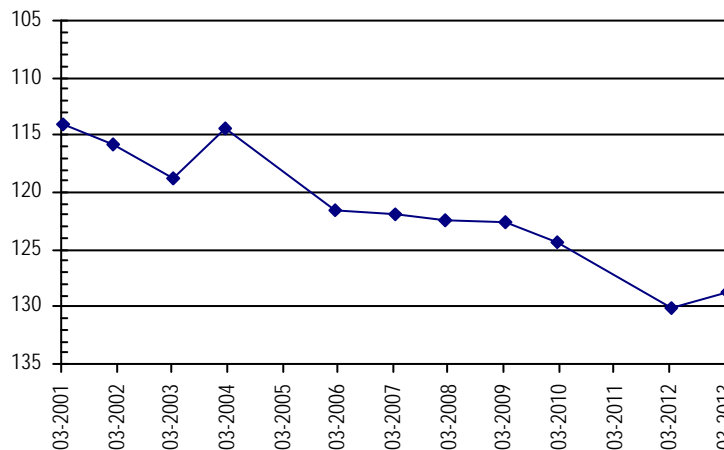
**Division:** 2 **Water District:** 66 **County:** BACA  
**Location:** Q160 Q40 Q10 Section Twnshp Range PM Distance from section lines:  
 SE SE 4 35 S 41 W S **From N/S line:** **From E/W line:**  
**UTM Coordinates (NAD83):** **Northing (UTM y):** 4100991.3 **Easting (UTM x):** 762030.5 *GPS*  
**Latitude/Longitude (decimal degrees):** 37.018588 -102.054688

**Surface Elevation (ft):** **Top Perforated Interval (ft):** **Base of grout (ft):** **Water Level Change**  
**Well depth (ft):** 175 **Bottom Perforated Interval (ft):** **1 year:**  
**Aquifer(s):** DOCKUM **5 year:**  
**10 year:**

### Measurements from last 10 years

Date	Depth to WL (ft)	Elev of WL (ft)	Change (ft)
2/16/2004	114.50		4.30
2/23/2006	121.50		-7.00
3/22/2007	122.00		-0.50
2/23/2008	122.50		-0.50
3/8/2009	122.60		-0.10
2/27/2010	124.30		-1.70
3/6/2011			
3/9/2012	130.10		
3/3/2013	128.80		1.30
3/25/2014			

### All Historic Measurements



## SOUTHERN HIGH PLAINS

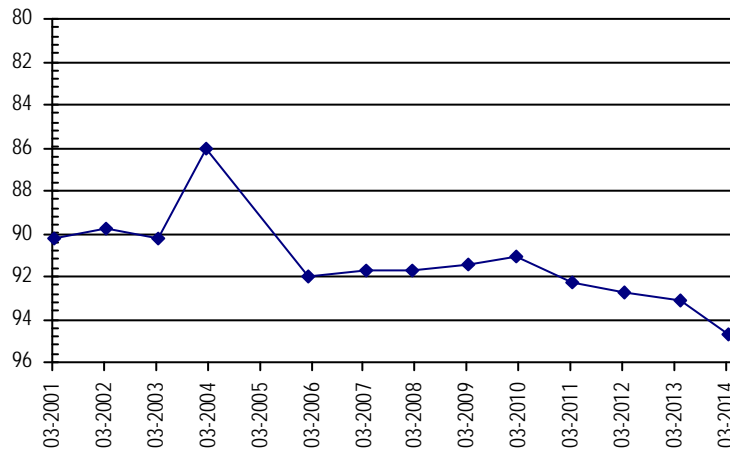
<b>Well Name:</b>	<b>SHP-83 RAY GLOVER</b>	<i>Owner:</i>	RAY GLOVER
<i>Permit #:</i>	5333 - F -	<i>Location #:</i>	SC03504306CD
<i>USGS Site ID:</i>			
<i>Division:</i>	2	<i>Water District:</i>	66
		<i>County:</i>	BACA
<i>Location:</i>	Q160 Q40 Q10 Section	Twnshp Range PM	Distance from section lines:
	SW SE 6	35 S 43 W S	<i>From N/S line:</i> <i>From E/W line:</i>
<i>UTM Coordinates (NAD83):</i>	<i>Northing (UTM y):</i>	4100408.3	<i>Easting (UTM x):</i> 738380.2 <i>GPS</i>
<i>Latitude/Longitude (decimal degrees):</i>		37.019636	-102.320432
<i>Surface Elevation (ft):</i>	3880	<i>Top Perforated Interval (ft):</i>	<i>Base of grout (ft):</i>
<i>Well depth (ft):</i>	150	<i>Bottom Perforated Interval (ft):</i>	
<i>Aquifer(s):</i>	DOCKUM		

**Water Level Change**  
**1 year:** -1.64  
**5 year:** -3.34  
**10 year:** -8.74

### Measurements from last 10 years

Date	Depth to WL (ft)	Elev of WL (ft)	Change (ft)
2/18/2004	86.00	3794.00	4.20
2/25/2006	92.00	3788.00	-6.00
3/22/2007	91.70	3788.30	0.30
2/23/2008	91.70	3788.30	0.00
3/9/2009	91.40	3788.60	0.30
2/27/2010	91.10	3788.90	0.30
3/6/2011	92.30	3787.70	-1.20
3/19/2012	92.70	3787.30	-0.40
4/20/2013	93.10	3786.90	-0.40
3/26/2014	94.74	3785.26	-1.64

### All Historic Measurements



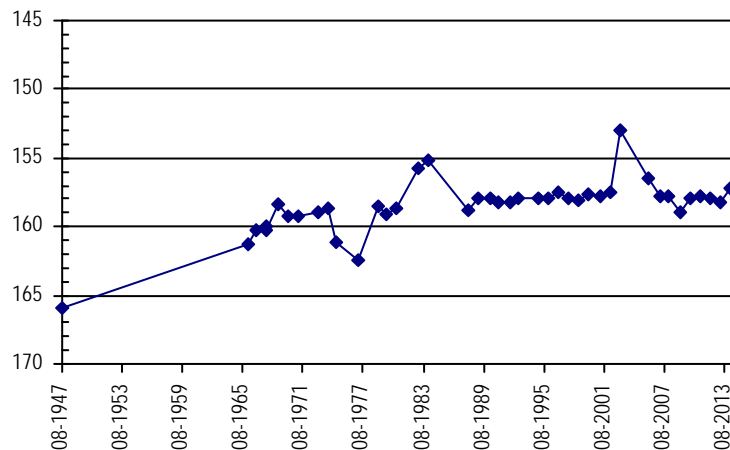
<b>Well Name:</b>	<b>SHP-84 HALLENBACK, G.&amp;M.</b>	<i>Owner:</i>	HALLENBACK, G.&M.
<i>Permit #:</i>	127551 - -	<i>Location #:</i>	SC03504510BB
<i>USGS Site ID:</i>			370053102290700
<i>Division:</i>	2	<i>Water District:</i>	66
		<i>County:</i>	BACA
<i>Location:</i>	Q160 Q40 Q10 Section	Twnshp Range PM	Distance from section lines:
	NW NW 10	35 S 45 W S	<i>From N/S line:</i> <i>From E/W line:</i>
<i>UTM Coordinates (NAD83):</i>	<i>Northing (UTM y):</i>	4099464.0	<i>Easting (UTM x):</i> 723546.0 <i>GPS</i>
<i>Latitude/Longitude (decimal degrees):</i>			
<i>Surface Elevation (ft):</i>	4104.9	<i>Top Perforated Interval (ft):</i>	<i>Base of grout (ft):</i>
<i>Well depth (ft):</i>	175	<i>Bottom Perforated Interval (ft):</i>	
<i>Aquifer(s):</i>	DAKOTA		

**Water Level Change**  
**1 year:** 1.04  
**5 year:** 1.84  
**10 year:**

### Measurements from last 10 years

Date	Depth to WL (ft)	Elev of WL (ft)	Change (ft)
2/25/2006	156.50	3948.40	-3.50
3/22/2007	157.80	3947.10	-1.30
2/24/2008	157.80	3947.10	0.00
3/9/2009	159.00	3945.90	-1.20
3/12/2010	158.00	3946.90	1.00
3/6/2011	157.80	3947.10	0.20
3/19/2012	157.90	3947.00	-0.10
4/20/2013	158.20	3946.70	-0.30
3/26/2014	157.16	3947.74	1.04

### All Historic Measurements



## SOUTHERN HIGH PLAINS

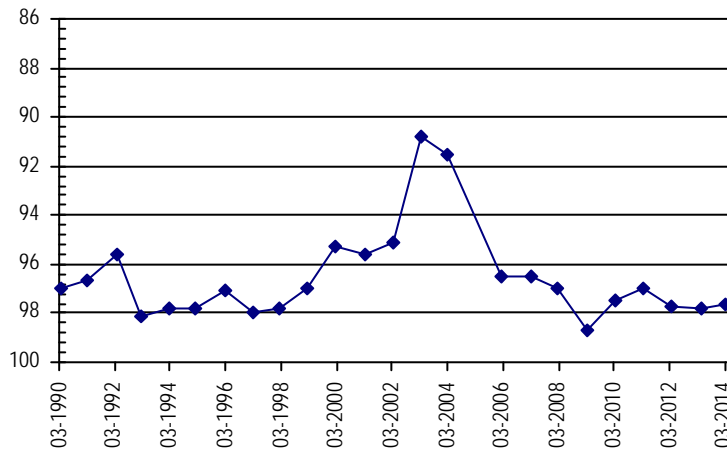
<b>Well Name:</b>	<b>SHP-85 DIXON, WM.J.</b>	<i>Owner:</i>	DIXON, WM.J.
<i>Permit #:</i>	10763 - -	<i>Location #:</i>	SC03504603DC
		<i>USGS Site ID:</i>	
<i>Division:</i>	2	<i>Water District:</i>	66
		<i>County:</i>	BACA
<i>Location:</i>	Q160 Q40 Q10 Section	Twnshp Range PM	Distance from section lines:
	SE SW 3	35 S 46 W S	<i>From N/S line:</i> <i>From E/W line:</i>
<i>UTM Coordinates (NAD83):</i>	<i>Northing (UTM y):</i>	4099828.3	<i>Easting (UTM x):</i> 714887.8 <i>GPS</i>
<i>Latitude/Longitude (decimal degrees):</i>		37.020081	-102.584444
<i>Surface Elevation (ft):</i>	4195	<i>Top Perforated Interval (ft):</i>	<i>Base of grout (ft):</i>
<i>Well depth (ft):</i>	134	<i>Bottom Perforated Interval (ft):</i>	
<i>Aquifer(s):</i>	CHEYENNE		

**Water Level Change**  
**1 year:** 0.12  
**5 year:** 1.02  
**10 year:** -6.18

### Measurements from last 10 years

Date	Depth to WL (ft)	Elev of WL (ft)	Change (ft)
2/17/2004	91.50	4103.50	-0.70
2/25/2006	96.50	4098.50	-5.00
3/22/2007	96.50	4098.50	0.00
2/24/2008	97.00	4098.00	-0.50
3/9/2009	98.70	4096.30	-1.70
3/12/2010	97.50	4097.50	1.20
3/6/2011	97.00	4098.00	0.50
3/19/2012	97.70	4097.30	-0.70
4/20/2013	97.80	4097.20	-0.10
3/26/2014	97.68	4097.32	0.12

### All Historic Measurements



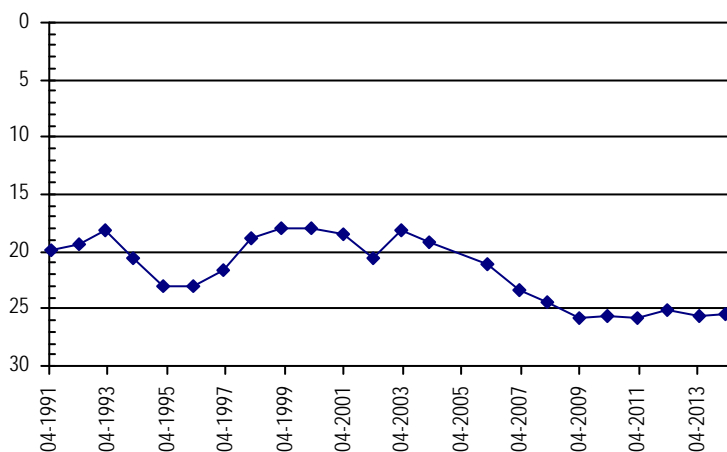
<b>Well Name:</b>	<b>SHP-86 WELBORN, J.M. 1</b>	<i>Owner:</i>	WELBORN, J.M.
<i>Permit #:</i>	5650 - F -	<i>Location #:</i>	SC03505003AAC
		<i>USGS Site ID:</i>	
<i>Division:</i>	2	<i>Water District:</i>	66
		<i>County:</i>	BACA
<i>Location:</i>	Q160 Q40 Q10 Section	Twnshp Range PM	Distance from section lines:
	NE NE SW 3	35 S 50 W S	<i>From N/S line:</i> <i>From E/W line:</i>
<i>UTM Coordinates (NAD83):</i>	<i>Northing (UTM y):</i>	4099998.4	<i>Easting (UTM x):</i> 676514.3 <i>GPS</i>
<i>Latitude/Longitude (decimal degrees):</i>		37.029610	-103.015499
<i>Surface Elevation (ft):</i>	4470	<i>Top Perforated Interval (ft):</i>	<i>Base of grout (ft):</i>
<i>Well depth (ft):</i>	82	<i>Bottom Perforated Interval (ft):</i>	
<i>Aquifer(s):</i>	QUATERNARY ALLUVIUM DOCKUM		

**Water Level Change**  
**1 year:** 0.19  
**5 year:** 0.39  
**10 year:** -6.31

### Measurements from last 10 years

Date	Depth to WL (ft)	Elev of WL (ft)	Change (ft)
2/17/2004	19.20	4450.80	-1.10
2/25/2006	21.10	4448.90	-1.90
3/22/2007	23.40	4446.60	-2.30
2/24/2008	24.40	4445.60	-1.00
3/9/2009	25.90	4444.10	-1.50
3/3/2010	25.70	4444.30	0.20
3/13/2011	25.80	4444.20	-0.10
3/15/2012	25.10	4444.90	0.70
4/20/2013	25.70	4444.30	-0.60
3/26/2014	25.51	4444.49	0.19

### All Historic Measurements



## SOUTHERN HIGH PLAINS

**Well Name:** **SHP-88 WELBORN,J.M. 3**

**Owner:** WELBORN,J.M.

**Permit #:** 3221 - F - **Location #:** SC03505012BB

**USGS Site ID:**

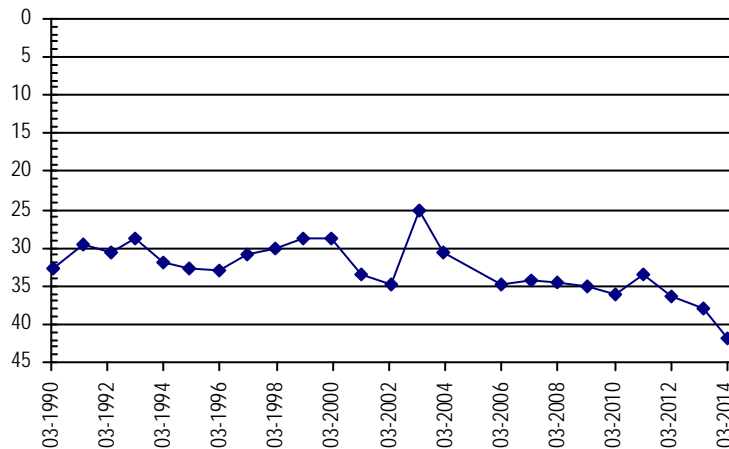
**Division:** 2 **Water District:** 66 **County:** BACA  
**Location:** Q160 Q40 Q10 Section Twnshp Range PM Distance from section lines:  
 NW NW 12 35 S 50 W S **From N/S line:** **From E/W line:**  
**UTM Coordinates (NAD83):** **Northing (UTM y):** 4098663.4 **Easting (UTM x):** 678711.3 **GPS**  
**Latitude/Longitude (decimal degrees):** 37.017167 -102.991130

**Surface Elevation (ft):** 4410 **Top Perforated Interval (ft):** **Base of grout (ft):** **Water Level Change**  
**Well depth (ft):** 82 **Bottom Perforated Interval (ft):** **1 year:** -3.79  
**Aquifer(s):** DOCKUM **5 year:** -6.79  
**10 year:** -11.29

**Measurements from last 10 years**

Date	Depth to WL (ft)	Elev of WL (ft)	Change (ft)
2/17/2004	30.50	4379.50	-5.30
2/25/2006	34.80	4375.20	-4.30
3/22/2007	34.40	4375.60	0.40
2/24/2008	34.60	4375.40	-0.20
3/9/2009	35.00	4375.00	-0.40
3/3/2010	36.00	4374.00	-1.00
3/13/2011	33.50	4376.50	2.50
3/15/2012	36.30	4373.70	-2.80
4/20/2013	38.00	4372.00	-1.70
3/26/2014	41.79	4368.21	-3.79

**All Historic Measurements**



**Well Name:** **SHP-87 WELBORN,J.M. 2**

**Owner:** WELBORN,J.M.

**Permit #:** 3220 - F - **Location #:** SC03505012BBA

**USGS Site ID:**

**Division:** 2 **Water District:** 66 **County:** BACA  
**Location:** Q160 Q40 Q10 Section Twnshp Range PM Distance from section lines:  
 NW NW NE 12 35 S 50 W S **From N/S line:** **From E/W line:**  
**UTM Coordinates (NAD83):** **Northing (UTM y):** 4098722.4 **Easting (UTM x):** 678735.3 **GPS**  
**Latitude/Longitude (decimal degrees):** 37.017694 -102.990846

**Surface Elevation (ft):** 4411 **Top Perforated Interval (ft):** **Base of grout (ft):** **Water Level Change**  
**Well depth (ft):** 50 **Bottom Perforated Interval (ft):** **1 year:** -1.45  
**Aquifer(s):** DOCKUM **5 year:** -4.45  
**10 year:** -8.75

**Measurements from last 10 years**

Date	Depth to WL (ft)	Elev of WL (ft)	Change (ft)
2/17/2004	34.20	4376.80	-5.40
2/25/2006	38.50	4372.50	-4.30
3/22/2007	37.80	4373.20	0.70
2/24/2008	38.10	4372.90	-0.30
3/9/2009	38.50	4372.50	-0.40
3/3/2010	38.90	4372.10	-0.40
3/13/2011	36.40	4374.60	2.50
3/15/2012	39.80	4371.20	-3.40
4/20/2013	41.50	4369.50	-1.70
3/26/2014	42.95	4368.05	-1.45

**All Historic Measurements**

