

GROUNDWATER LEVELS
in the
LOST CREEK
DESIGNATED GROUND WATER BASIN
2017



by
Andrew Flor



COLORADO
Division of Water Resources
Department of Natural Resources

John W. Hickenlooper
Governor

Robert W. Randall
Executive Director

Dick Wolfe
State Engineer

Matthew A. Sares
Project Manager

LOST CREEK DESIGNATED GROUND WATER BASIN
WATER LEVEL MEASUREMENTS
2017

This report contains basic data concerning the depth to and elevation of groundwater in the Lost Creek Designated Basin collected in early February 2017. As in previous reports, the accompanying data tables only list data from the last 10 years, though the hydrographs display the full period of record. Wells lacking measurements for the past 10 years have been removed from the monitoring program and are no longer included in this publication. Acquisition and publication of this information is a cooperative effort between the well owners, Lost Creek Ground Water Management District, and the Colorado Division of Water Resources. The project is part of a statewide groundwater-level monitoring program funded by Senate Bill 200 (1987 legislative session). This legislation directed that a portion of the fees collected for water well permit applications be used for the establishment of a program to monitor water-level trends throughout the state.

The locations of the wells included in this report and the extent of the alluvial aquifer are shown on the following map. Previous work in the basin (Topper, 2011) suggests that analysis of groundwater levels by sub-regions is appropriate. Water-level measurements are typically recorded in the winter or spring of each year. The 2017 water levels produced the following general conclusions:

North Area: North of Roggen/I-76 to Hwy 34

- Depth to water generally ranges from 4 to 41 feet. Water levels were relatively stable between 2016 and 2017, increasing by approximately 1 foot. Longer-term comparisons indicate an increase of approximately 1 foot over 5 years, and a decrease of 0.50 feet over 10 years.

Middle Area: Between Roggen/I-76 and Prospect Valley/Hwy 52

- **Depth to water generally ranges from 16 to 62 feet.** Water levels both rose and dropped depending upon location between 2016 and 2017. Longer-term comparisons indicate a decline of nearly 2 feet over 5 years, and 7 feet over 10 years.

South Area: South of Prospect Valley/Hwy 52 to 144th Avenue

- **Depth to water generally ranges from 41 to 115 feet.** Water levels increased an average of 6 feet between 2016 and 2017. Longer-term comparisons indicate relative stability over 5 years, and an increase of nearly 2 feet over 10 years.

On average, groundwater levels in wells measured by the Division of Water Resources were up by 2 feet compared to 2016. The medium term, 5-year comparison, showed an average decline of 0.6 feet. Over the long term, 10-year comparison, nearly all wells exhibited a decline within the basin with the average being -2.1 feet. To assist stakeholders in evaluating groundwater flow directions and gradients we include a water-table elevation map compiled from Spring 2010 that was produced for the basin's 2011 recharge and storage study.

An electronic copy of this report, in Adobe PDF format, is available on the Division of Water Resources website

<http://water.state.co.us/groundwater/Levels/Pages/HydroGeo.aspx>.

Additionally, all groundwater level data may be accessed and exported using the tools available on the Colorado Decision Support System:

<http://cdss.state.co.us/onlineTools/Pages/GroundWaterWaterLevels.aspx>

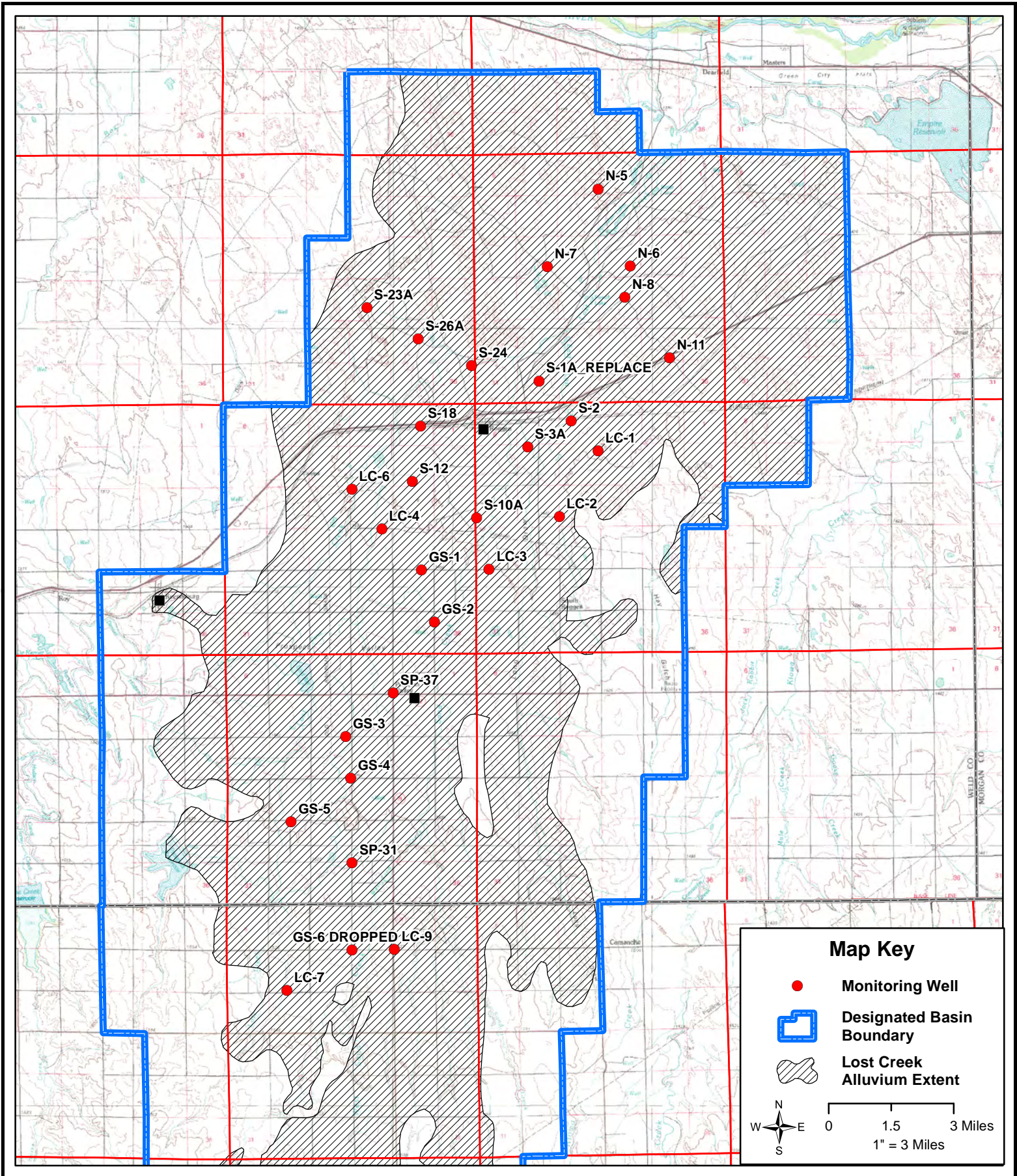
and the Colorado Information Marketplace HydroBase Bulk Data Exporter:

<https://data.colorado.gov/Information-Sharing/DWR-Well-Water-Level/hfwh-wsgi>

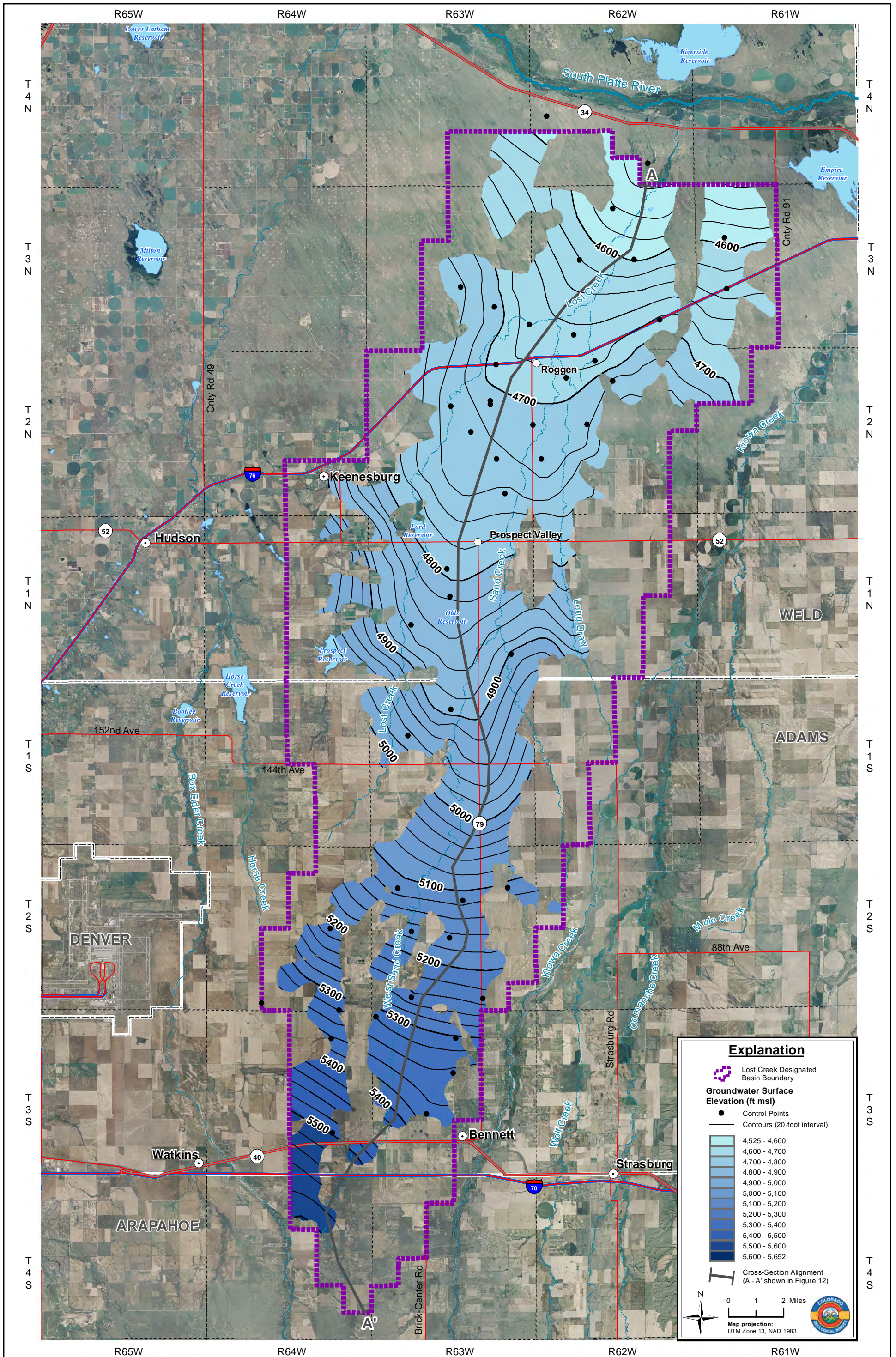
or the Colorado Decision Support System MapViewer

<http://water.state.co.us/DataMaps/GISandMaps/MapView/MapView/Pages/FAQ.aspx>

If you have any questions regarding groundwater in the Lost Creek Designated Ground Water Basin and the information in this report, please contact the Groundwater Information Desk at (303) 866-3587.



State of Colorado -- Division of Water Resources
**Lost Creek Designated Basin
 Monitoring Well Locations**



**Alluvial Groundwater Elevation - Spring 2010
Lost Creek Basin Aquifer Recharge and Storage Study**

Figure 11

LOST CREEK

Well Name: GS-3

Owner:

Permit #: - -

Location #: SB00106309DDC

USGS Site ID: 400240104260601

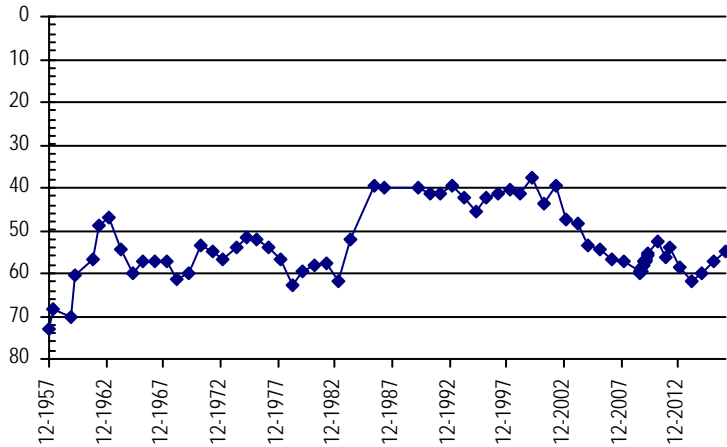
Division: 1 *Water District:* 1 *County:* WELD
Location: Q160 Q40 Q10 Section *Twnshp* *Range* *PM* *Distance from section lines:*
 SE SE SW 9 1 N 63 W S *From N/S line:* *From E/W line:*
UTM Coordinates (NAD83): *Northing (UTM y):* 4434448.0 *Easting (UTM x):* 548132.1 *GPS*
Latitude/Longitude (decimal degrees): 40.058908 -104.435643

Surface Elevation (ft): 4867.76 *Top Perforated Interval (ft):* *Base of grout (ft):* **Water Level Change**
Well depth (ft): 101 *Bottom Perforated Interval (ft):* **1 year:** 2.50
Aquifer(s): QUATERNARY ALLUVIUM **5 year:** -0.86
 10 year: 2.04

Measurements from last 10 years

Date	Depth to WL (ft)	Elev of WL (ft)	Change (ft)
3/21/2007	56.90	4810.86	-2.57
2/26/2008	57.04	4810.72	-0.14
7/20/2009	59.34	4808.42	-2.30
8/26/2009	59.98	4807.78	-0.64
9/25/2009	59.51	4808.25	0.47
10/23/2009	58.75	4809.01	0.76
11/24/2009	58.17	4809.59	0.58
12/22/2009	57.35	4810.41	0.82
1/27/2010	57.01	4810.75	0.34
2/10/2010	56.84	4810.92	0.17
2/26/2010	56.52	4811.24	0.32
3/31/2010	55.95	4811.81	0.57
4/28/2010	55.40	4812.36	0.55
2/22/2011	52.64	4815.12	2.76
11/1/2011	56.43	4811.33	-3.79
4/5/2012	54.00	4813.76	2.43
1/28/2013	58.55	4809.21	-4.55
3/4/2014	61.80	4805.96	-3.25
1/28/2015	59.84	4807.92	1.96
1/29/2016	57.36	4810.40	2.48
2/3/2017	54.86	4812.90	2.50

All Historic Measurements



LOST CREEK

Well Name: GS-4

Owner: JOSEPH SCHRANT

Permit #: 6693 - R -

Location #: SB00106316DDD

USGS Site ID: 400240104255901

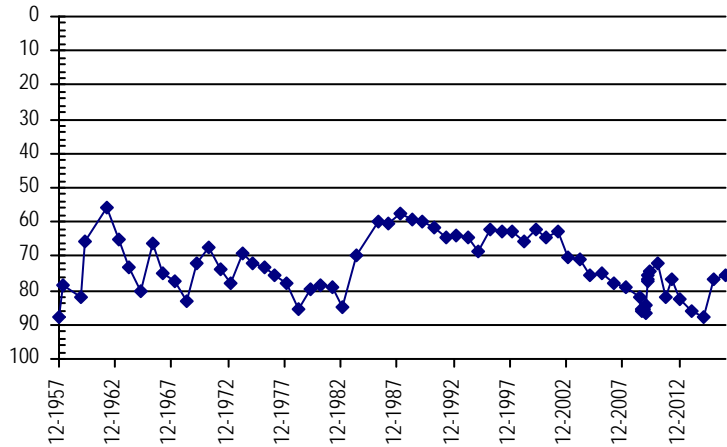
Division: 1 *Water District:* 1 *County:* WELD
Location: Q160 Q40 Q10 Section Twnshp Range PM Distance from section lines:
 SE SE SE 16 1 N 63 W S *From N/S line:* *From E/W line:*
UTM Coordinates (NAD83): *Northing (UTM y):* 4432842.0 *Easting (UTM x):* 548323.1 *GPS*
Latitude/Longitude (decimal degrees): 40.044428 -104.433523

Surface Elevation (ft): 4902.76 *Top Perforated Interval (ft):* *Base of grout (ft):* **Water Level Change**
Well depth (ft): 150 *Bottom Perforated Interval (ft):* **1 year:** 1.23
Aquifer(s): QUATERNARY ALLUVIUM **5 year:** 0.73
 10 year: 2.36

Measurements from last 10 years

Date	Depth to WL (ft)	Elev of WL (ft)	Change (ft)
3/21/2007	78.16	4824.60	-2.91
2/26/2008	79.09	4823.67	-0.93
7/20/2009	81.91	4820.85	-2.82
8/26/2009	85.83	4816.93	-3.92
9/25/2009	85.58	4817.18	0.25
10/23/2009	85.25	4817.51	0.33
11/24/2009	85.74	4817.02	-0.49
12/22/2009	86.88	4815.88	-1.14
1/27/2010	84.10	4818.66	2.78
2/10/2010	77.33	4825.43	6.77
2/26/2010	76.46	4826.30	0.87
3/31/2010	75.52	4827.24	0.94
4/28/2010	74.21	4828.55	1.31
2/22/2011	72.08	4830.68	2.13
11/1/2011	81.71	4821.05	-9.63
4/5/2012	76.53	4826.23	5.18
1/28/2013	82.57	4820.19	-6.04
3/4/2014	85.80	4816.96	-3.23
1/28/2015	87.68	4815.08	-1.88
1/29/2016	77.03	4825.73	10.65
2/3/2017	75.80	4826.96	1.23

All Historic Measurements



LOST CREEK

Well Name: LC-9 **Owner:** SOUTH ADAMS COUNTY WATER & SANITA
Permit #: 14861 - RFP - **Location #:** SC00106302CC **USGS Site ID:**

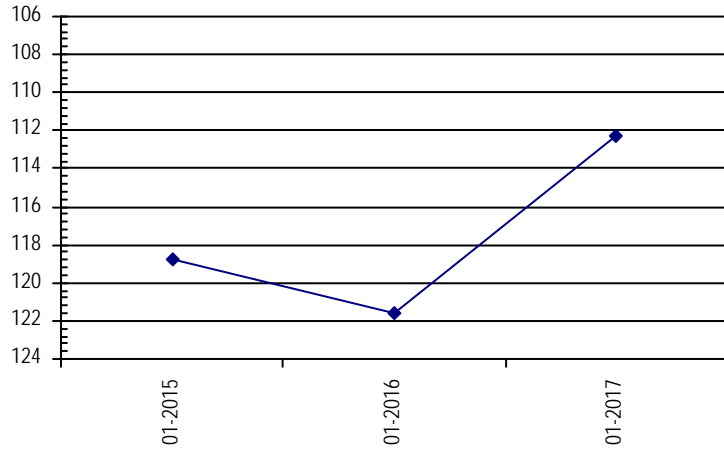
Division: 1 **Water District:** 1 **County:** ADAMS
Location: Q160 Q40 Q10 Section Twnshp Range PM Distance from section lines:
 SW SW 2 1 S 63 W S **From N/S line:** **From E/W line:**
UTM Coordinates (NAD83): **Northing (UTM y):** 4426237.0 **Easting (UTM x):** 550006.3 *GPS*
Latitude/Longitude (decimal degrees): 39.984823 -104.414301

Surface Elevation (ft): 5011 **Top Perforated Interval (ft):** 120 **Base of grout (ft):** 10 **Water Level Change**
Well depth (ft): 184 **Bottom Perforated Interval (ft):** 184 **1 year:** 9.27
Aquifer(s): **5 year:**
10 year:

Measurements from last 10 years

Date	Depth to WL (ft)	Elev of WL (ft)	Change (ft)
1/28/2015	118.73	4892.27	
1/29/2016	121.57	4889.43	-2.84
2/3/2017	112.30	4898.70	9.27

All Historic Measurements



LOST CREEK

Well Name: N-11 *Owner:* COLORADO DEPARTMENT OF TRANSPOR
Permit #: - - *Location #:* SB00306226DCD *USGS Site ID:*

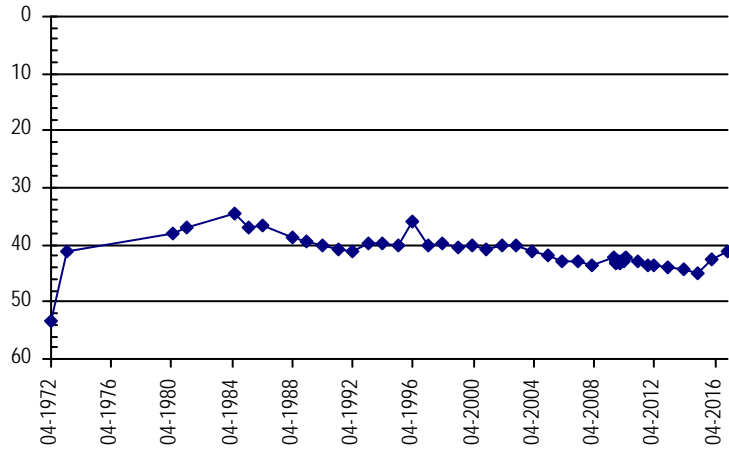
Division: 1 *Water District:* 1 *County:* WELD
Location: Q160 Q40 Q10 Section *Twnshp* *Range* *PM* *Distance from section lines:*
 SE SW SE 26 3 N 62 W S *From N/S line:* *From E/W line:*
UTM Coordinates (NAD83): *Northing (UTM y):* 4449081.8 *Easting (UTM x):* 560640.6 *GPS*
Latitude/Longitude (decimal degrees): 40.189935 -104.287613

Surface Elevation (ft): 4722.05 *Top Perforated Interval (ft):* *Base of grout (ft):* **Water Level Change**
Well depth (ft): *Bottom Perforated Interval (ft):* **1 year:** 1.19
Aquifer(s): QUATERNARY ALLUVIUM **5 year:** 2.33
 10 year: 1.62

Measurements from last 10 years

Date	Depth to WL (ft)	Elev of WL (ft)	Change (ft)
3/21/2007	42.89	4679.16	-0.11
2/26/2008	43.70	4678.35	-0.81
7/20/2009	42.37	4679.68	1.33
8/24/2009	42.85	4679.20	-0.48
9/24/2009	43.18	4678.87	-0.33
10/23/2009	43.03	4679.02	0.15
11/24/2009	43.09	4678.96	-0.06
12/22/2009	42.74	4679.31	0.35
1/27/2010	42.82	4679.23	-0.08
2/10/2010	42.85	4679.20	-0.03
2/26/2010	42.91	4679.14	-0.06
3/31/2010	42.51	4679.54	0.40
4/28/2010	42.35	4679.70	0.16
2/22/2011	42.95	4679.10	-0.60
11/1/2011	43.46	4678.59	-0.51
4/5/2012	43.60	4678.45	-0.14
1/28/2013	44.08	4677.97	-0.48
3/4/2014	44.40	4677.65	-0.32
1/27/2015	44.86	4677.19	-0.46
1/28/2016	42.46	4679.59	2.40
2/2/2017	41.27	4680.78	1.19

All Historic Measurements



LOST CREEK

Well Name: N-5

Owner: ROSS SEYFRIED

Permit #: - -

Location #: SB00306203CCC

USGS Site ID:

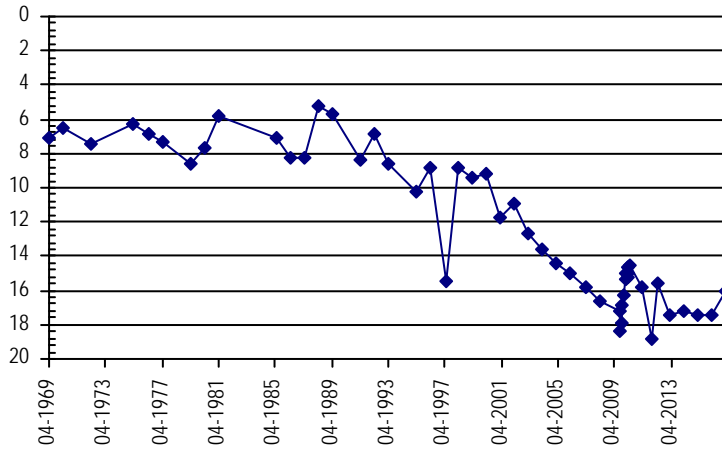
Division: 1 *Water District:* 1 *County:* WELD
Location: Q160 Q40 Q10 Section *Twshp* *Range* *PM* *Distance from section lines:*
 SW SW SW 3 3 N 62 W S *From N/S line:* *From E/W line:*
UTM Coordinates (NAD83): *Northing (UTM y):* 4455609.0 *Easting (UTM x):* 557885.3 *GPS*
Latitude/Longitude (decimal degrees): 40.248932 -104.319391

Surface Elevation (ft): 4592 *Top Perforated Interval (ft):* *Base of grout (ft):* **Water Level Change**
Well depth (ft): *Bottom Perforated Interval (ft):* **1 year:** 1.44
Aquifer(s): QUATERNARY ALLUVIUM **5 year:** -0.48
 10 year: -0.25

Measurements from last 10 years

Date	Depth to WL (ft)	Elev of WL (ft)	Change (ft)
3/21/2007	15.79	4576.21	-0.82
2/26/2008	16.61	4575.39	-0.82
7/20/2009	17.18	4574.82	-0.57
8/24/2009	18.36	4573.64	-1.18
9/24/2009	17.85	4574.15	0.51
10/23/2009	16.91	4575.09	0.94
11/24/2009	16.27	4575.73	0.64
12/22/2009	15.01	4576.99	1.26
1/27/2010	15.40	4576.60	-0.39
2/10/2010	15.22	4576.78	0.18
2/26/2010	15.05	4576.95	0.17
3/31/2010	14.70	4577.30	0.35
4/28/2010	14.57	4577.43	0.13
2/22/2011	15.78	4576.22	-1.21
11/1/2011	18.78	4573.22	-3.00
4/5/2012	15.56	4576.44	3.22
1/28/2013	17.45	4574.55	-1.89
3/4/2014	17.16	4574.84	0.29
1/27/2015	17.43	4574.57	-0.27
1/29/2016	17.48	4574.52	-0.05
2/2/2017	16.04	4575.96	1.44

All Historic Measurements



LOST CREEK

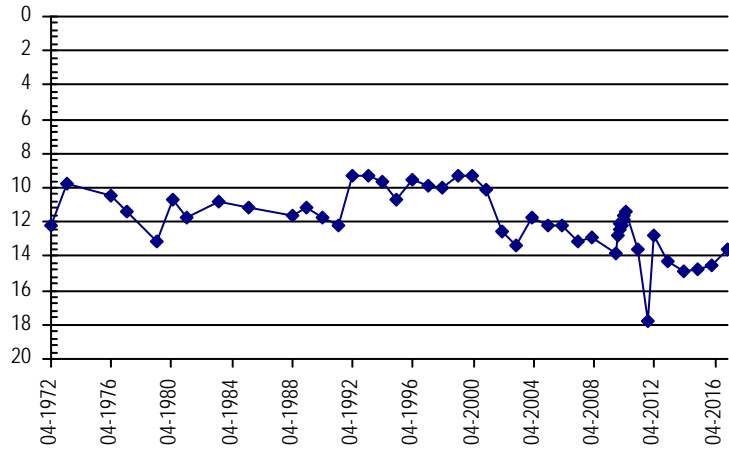
Well Name:	N-6				<i>Owner:</i> PREMIER CORP
<i>Permit #:</i>	12174 - F -	<i>Location #:</i>	SB00306214BAC	<i>USGS Site ID:</i>	
<i>Division:</i>	1	<i>Water District:</i>	1	<i>County:</i>	WELD
<i>Location:</i>	Q160 Q40 Q10	<i>Section:</i>	Twnshp Range PM	<i>Distance from section lines:</i>	
	NW NE SW 14	3 N 62 W S		<i>From N/S line:</i>	<i>From E/W line:</i>
<i>UTM Coordinates (NAD83):</i>	<i>Northing (UTM y):</i>	4452631.0	<i>Easting (UTM x):</i>	559127.2	<i>GPS</i>
<i>Latitude/Longitude (decimal degrees):</i>		40.222017		-104.305064	
<i>Surface Elevation (ft):</i>	4612	<i>Top Perforated Interval (ft):</i>		<i>Base of grout (ft):</i>	
<i>Well depth (ft):</i>	87	<i>Bottom Perforated Interval (ft):</i>			
<i>Aquifer(s):</i>	QUATERNARY ALLUVIUM				

Water Level Change
1 year: 0.91
5 year: -0.81
10 year: -0.46

Measurements from last 10 years

Date	Depth to WL (ft)	Elev of WL (ft)	Change (ft)
3/21/2007	13.11	4598.89	-0.93
2/26/2008	12.96	4599.04	0.15
9/24/2009	13.79	4598.21	-0.83
10/23/2009	12.80	4599.20	0.99
11/24/2009	12.43	4599.57	0.37
12/22/2009	12.06	4599.94	0.37
1/27/2010	11.96	4600.04	0.10
2/10/2010	12.26	4599.74	-0.30
2/26/2010	11.87	4600.13	0.39
3/31/2010	11.57	4600.43	0.30
4/28/2010	11.35	4600.65	0.22
2/22/2011	13.62	4598.38	-2.27
11/1/2011	17.83	4594.17	-4.21
4/5/2012	12.76	4599.24	5.07
1/28/2013	14.25	4597.75	-1.49
3/4/2014	14.84	4597.16	-0.59
1/27/2015	14.82	4597.18	0.02
1/29/2016	14.48	4597.52	0.34
2/2/2017	13.57	4598.43	0.91

All Historic Measurements



LOST CREEK

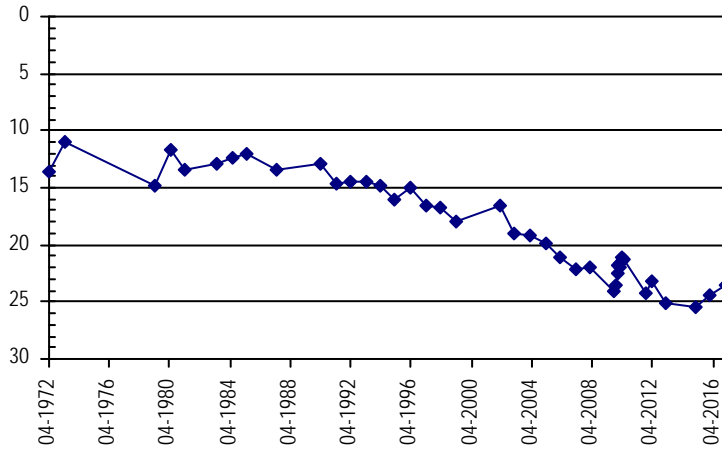
Well Name:	N-7				<i>Owner:</i>	CERVI RANCHES	
<i>Permit #:</i>	12225 - F -	<i>Location #:</i>	SB00306227DAD		<i>USGS Site ID:</i>		
<i>Division:</i>	1	<i>Water District:</i>	1		<i>County:</i>	WELD	
<i>Location:</i>	Q160 Q40 Q10	<i>Section:</i>	27	<i>TwNShp:</i>	3 N	<i>Range:</i>	62 W S
	SE NE SE					<i>PM:</i>	
						<i>Distance from section lines:</i>	
<i>UTM Coordinates (NAD83):</i>	<i>Northing (UTM y):</i>	4452605.6		<i>Easting (UTM x):</i>	555915.0 <i>GPS</i>		
<i>Latitude/Longitude (decimal degrees):</i>	40.222009		-104.342818				
<i>Surface Elevation (ft):</i>	4646.48	<i>Top Perforated Interval (ft):</i>			<i>Base of grout (ft):</i>		
<i>Well depth (ft):</i>	109	<i>Bottom Perforated Interval (ft):</i>					
<i>Aquifer(s):</i>	QUATERNARY ALLUVIUM						

Water Level Change
1 year: 0.77
5 year: -0.36
10 year: -1.42

Measurements from last 10 years

Date	Depth to WL (ft)	Elev of WL (ft)	Change (ft)
3/21/2007	22.21	4624.27	-1.06
2/26/2008	21.94	4624.54	0.27
9/24/2009	24.12	4622.36	-2.18
10/23/2009	23.50	4622.98	0.62
11/24/2009	22.45	4624.03	1.05
12/22/2009	21.80	4624.68	0.65
1/27/2010	21.59	4624.89	0.21
2/10/2010	21.90	4624.58	-0.31
2/26/2010	21.37	4625.11	0.53
3/31/2010	21.17	4625.31	0.20
4/28/2010	21.22	4625.26	-0.05
11/1/2011	24.28	4622.20	-3.06
4/5/2012	23.27	4623.21	1.01
1/28/2013	25.03	4621.45	-1.76
1/27/2015	25.55	4620.93	-0.52
1/29/2016	24.40	4622.08	1.15
2/2/2017	23.63	4622.85	0.77

All Historic Measurements



LOST CREEK

Well Name: N-8

Owner: CERVI RANCHES

Permit #: - - Location #: SB00306222ACC

USGS Site ID:

Division: 1 Water District: 1 County: WELD

Location: Q160 Q40 Q10 Section Twnshp Range PM Distance from section lines:
 NE SW SW 22 3 N 62 W S From N/S line: From E/W line:

UTM Coordinates (NAD83): Northing (UTM y): 4451429.8 Easting (UTM x): 558919.6 GPS

Latitude/Longitude (decimal degrees): 40.211211 -104.307614

Surface Elevation (ft): 4632.57 Top Perforated Interval (ft): Base of grout (ft): **Water Level Change**

Well depth (ft): 48 Bottom Perforated Interval (ft): **1 year:**

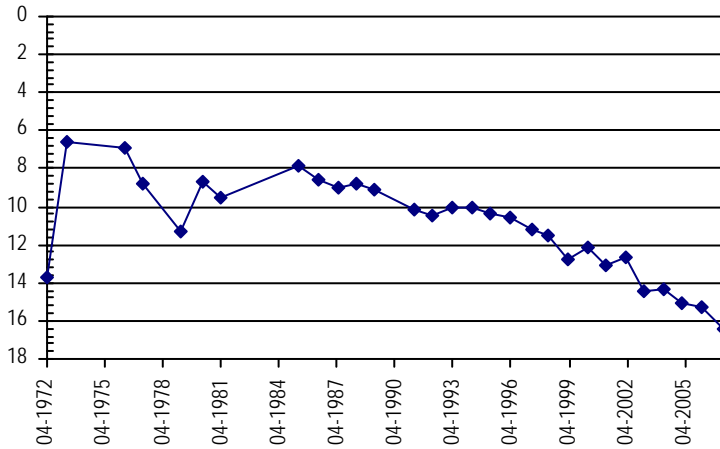
Aquifer(s): QUATERNARY ALLUVIUM **5 year:**

10 year:

Measurements from last 10 years

Date	Depth to WL (ft)	Elev of WL (ft)	Change (ft)
3/21/2007	16.44	4616.13	-1.11
2/26/2008			
7/20/2009			

All Historic Measurements



Well Name: S-10A

Owner:

Permit #: - - Location #: SB00206218CBC

USGS Site ID:

Division: 1 Water District: 1 County: WELD

Location: Q160 Q40 Q10 Section Twnshp Range PM Distance from section lines:
 SW NW SW 18 2 N 62 W S From N/S line: From E/W line:

UTM Coordinates (NAD83): Northing (UTM y): 4442909.4 Easting (UTM x): 553185.3 GPS

Latitude/Longitude (decimal degrees): 40.134834 -104.375700

Surface Elevation (ft): 4745 Top Perforated Interval (ft): Base of grout (ft): **Water Level Change**

Well depth (ft): 90 Bottom Perforated Interval (ft): **1 year: -0.08**

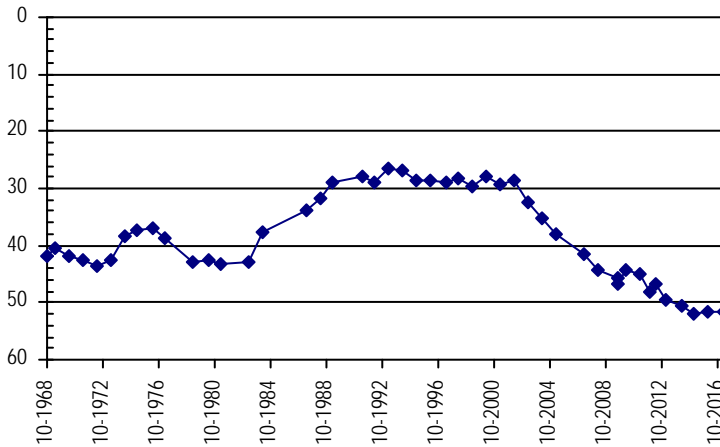
Aquifer(s): QUATERNARY ALLUVIUM **5 year: -5.09**

10 year: -10.19

Measurements from last 10 years

Date	Depth to WL (ft)	Elev of WL (ft)	Change (ft)
3/21/2007	41.50	4703.50	-3.49
2/26/2008	44.13	4700.87	-2.63
7/20/2009	45.86	4699.14	-1.73
8/20/2009	46.76	4698.24	-0.90
2/10/2010	44.36	4700.64	2.40
2/22/2011	45.11	4699.89	-0.75
11/1/2011	48.24	4696.76	-3.13
4/5/2012	46.60	4698.40	1.64
1/28/2013	49.68	4695.32	-3.08
3/4/2014	50.45	4694.55	-0.77
1/27/2015	52.04	4692.96	-1.59
1/28/2016	51.61	4693.39	0.43
2/2/2017	51.69	4693.31	-0.08

All Historic Measurements



LOST CREEK

Well Name: S-12

Owner: PHILLIP CAMEISCH

Permit #: 10477 - F -

Location #: SB00206311CDD

USGS Site ID:

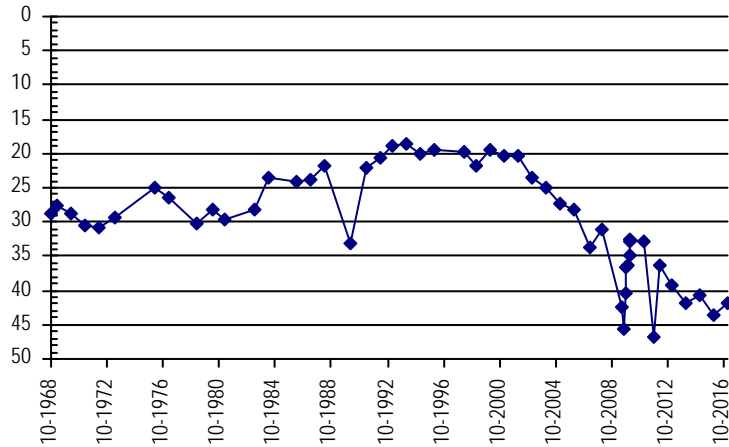
Division: 1 *Water District:* 1 *County:* WELD
Location: Q160 Q40 Q10 Section *Twshp* *Range* *PM* *Distance from section lines:*
 SW SE SE 11 2 N 63 W S *From N/S line:* *From E/W line:*
UTM Coordinates (NAD83): *Northing (UTM y):* 4444309.0 *Easting (UTM x):* 550697.2 *GPS*
Latitude/Longitude (decimal degrees): 40.147597 -104.404794

Surface Elevation (ft): 4741 *Top Perforated Interval (ft):* *Base of grout (ft):* **Water Level Change**
Well depth (ft): 90 *Bottom Perforated Interval (ft):* **1 year:** 1.55
Aquifer(s): QUATERNARY ALLUVIUM **5 year:** -5.60
 10 year: -8.26

Measurements from last 10 years

Date	Depth to WL (ft)	Elev of WL (ft)	Change (ft)
3/21/2007	33.71	4707.29	-5.46
2/26/2008	31.20	4709.80	2.51
7/31/2009	42.50	4698.50	-11.30
9/24/2009	45.50	4695.50	-3.00
10/23/2009	40.40	4700.60	5.10
11/24/2009	36.49	4704.51	3.91
12/22/2009	36.20	4704.80	0.29
1/27/2010	34.96	4706.04	1.24
2/10/2010	32.75	4708.25	2.21
2/26/2010	32.56	4708.44	0.19
2/11/2011	32.90	4708.10	-0.34
11/1/2011	46.68	4694.32	-13.78
4/5/2012	36.37	4704.63	10.31
1/28/2013	39.20	4701.80	-2.83
3/4/2014	41.74	4699.26	-2.54
1/27/2015	40.63	4700.37	1.11
1/28/2016	43.52	4697.48	-2.89
2/2/2017	41.97	4699.03	1.55

All Historic Measurements



LOST CREEK

Well Name: S-18

Owner: COLORADO DEPARTMENT OF TRANSPOR

Permit #: - -

Location #: SB00206302DBA

USGS Site ID:

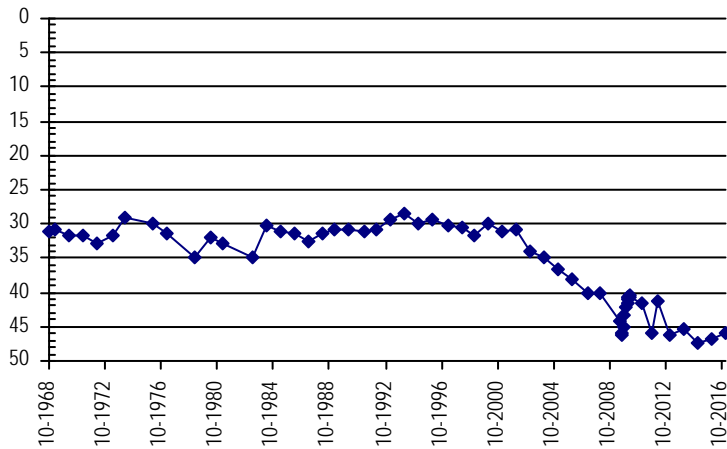
Division: 1 **Water District:** 1 **County:** WELD
Location: Q160 Q40 Q10 Section Twnshp Range PM Distance from section lines:
 SE NW NE 2 2 N 63 W S **From N/S line:** **From E/W line:**
UTM Coordinates (NAD83): **Northing (UTM y):** 4446449.3 **Easting (UTM x):** 551027.6 *GPS*
Latitude/Longitude (decimal degrees): 40.166859 -104.400746

Surface Elevation (ft): 4737.42 **Top Perforated Interval (ft):** **Base of grout (ft):** **Water Level Change**
Well depth (ft): **Bottom Perforated Interval (ft):** **1 year:** 0.99
Aquifer(s): QUATERNARY ALLUVIUM **5 year:** -4.61
 10 year: -5.71

Measurements from last 10 years

Date	Depth to WL (ft)	Elev of WL (ft)	Change (ft)
3/21/2007	40.19	4697.23	-2.11
2/26/2008	40.22	4697.20	-0.03
7/20/2009	44.24	4693.18	-4.02
8/24/2009	46.33	4691.09	-2.09
9/24/2009	45.82	4691.60	0.51
10/23/2009	44.95	4692.47	0.87
11/24/2009	43.40	4694.02	1.55
12/22/2009	42.28	4695.14	1.12
1/27/2010	41.47	4695.95	0.81
2/10/2010	41.05	4696.37	0.42
2/26/2010	40.79	4696.63	0.26
3/31/2010	40.52	4696.90	0.27
4/28/2010	40.57	4696.85	-0.05
2/22/2011	41.49	4695.93	-0.92
11/1/2011	45.90	4691.52	-4.41
4/5/2012	41.29	4696.13	4.61
1/28/2013	46.30	4691.12	-5.01
3/4/2014	45.25	4692.17	1.05
1/27/2015	47.33	4690.09	-2.08
1/28/2016	46.89	4690.53	0.44
2/2/2017	45.90	4691.52	0.99

All Historic Measurements



LOST CREEK

Well Name: S-23A

Owner: CERVI RANCH

Permit #: - -

Location #: SB00306322CAD

USGS Site ID:

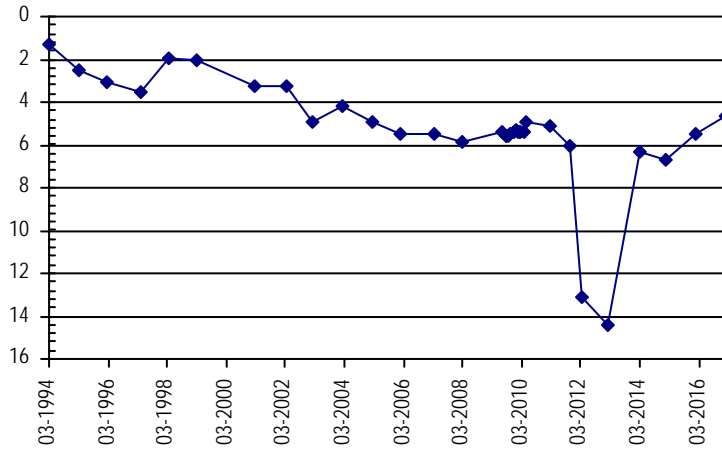
Division: 1 *Water District:* 1 *County:* WELD
Location: Q160 Q40 Q10 Section *Twshp* *Range* *PM* *Distance from section lines:*
 SW NE SE 22 3 N 63 W S *From N/S line:* *From E/W line:*
UTM Coordinates (NAD83): *Northing (UTM y):* 4451023.1 *Easting (UTM x):* 548944.2 *GPS*
Latitude/Longitude (decimal degrees): 40.208188 -104.424863

Surface Elevation (ft): 4747 *Top Perforated Interval (ft):* *Base of grout (ft):* **Water Level Change**
Well depth (ft): *Bottom Perforated Interval (ft):* **1 year:** 0.85
Aquifer(s): QUATERNARY ALLUVIUM **5 year:** 8.53
 10 year: 0.89

Measurements from last 10 years

Date	Depth to WL (ft)	Elev of WL (ft)	Change (ft)
3/21/2007	5.52	4741.48	-0.01
2/26/2008	5.88	4741.12	-0.36
7/20/2009	5.36	4741.64	0.52
8/24/2009	5.61	4741.39	-0.25
9/24/2009	5.56	4741.44	0.05
10/23/2009	5.51	4741.49	0.05
11/24/2009	5.40	4741.60	0.11
12/22/2009	5.34	4741.66	0.06
1/27/2010	5.37	4741.63	-0.03
2/10/2010	5.38	4741.62	-0.01
2/26/2010	5.39	4741.61	-0.01
3/31/2010	5.36	4741.64	0.03
4/28/2010	4.92	4742.08	0.44
2/22/2011	5.13	4741.87	-0.21
11/1/2011	6.02	4740.98	-0.89
4/5/2012	13.16	4733.84	-7.14
1/28/2013	14.42	4732.58	-1.26
3/4/2014	6.31	4740.69	8.11
1/27/2015	6.71	4740.29	-0.40
1/28/2016	5.48	4741.52	1.23
2/2/2017	4.63	4742.37	0.85

All Historic Measurements



LOST CREEK

Well Name: S-24

Owner: CERVI RANCHES

Permit #: - -

Location #: SB00306325DDD

USGS Site ID:

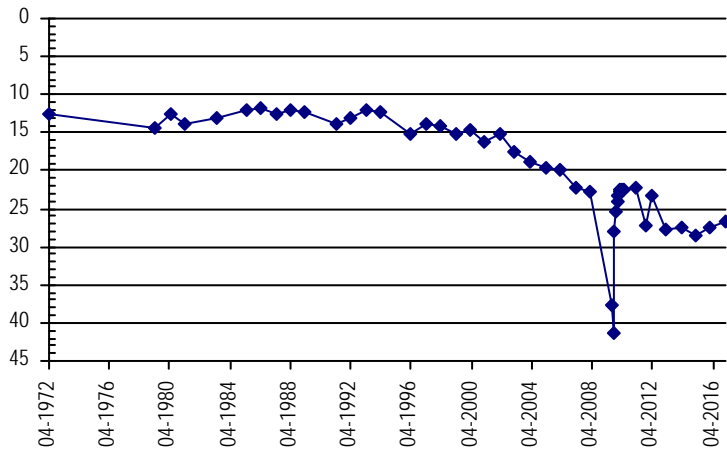
Division: 1 *Water District:* 1 *County:* WELD
Location: Q160 Q40 Q10 Section Twtnshp Range PM Distance from section lines:
 SE SE SE 25 3 N 63 W S *From N/S line:* *From E/W line:*
UTM Coordinates (NAD83): *Northing (UTM y):* 4448793.0 *Easting (UTM x):* 552991.2 *GPS*
Latitude/Longitude (decimal degrees): 40.187852 -104.377494

Surface Elevation (ft): 4692 *Top Perforated Interval (ft):* *Base of grout (ft):* **Water Level Change**
Well depth (ft): *Bottom Perforated Interval (ft):* **1 year:** 0.84
Aquifer(s): QUATERNARY ALLUVIUM **5 year:** -3.26
 10 year: -4.25

Measurements from last 10 years

Date	Depth to WL (ft)	Elev of WL (ft)	Change (ft)
3/21/2007	22.32	4669.68	-2.53
2/26/2008	22.76	4669.24	-0.44
7/20/2009	37.64	4654.36	-14.88
8/24/2009	41.26	4650.74	-3.62
9/24/2009	28.12	4663.88	13.14
10/23/2009	25.41	4666.59	2.71
11/24/2009	24.06	4667.94	1.35
12/22/2009	23.20	4668.80	0.86
1/27/2010	22.66	4669.34	0.54
2/10/2010	22.42	4669.58	0.24
2/26/2010	22.51	4669.49	-0.09
4/28/2010	22.50	4669.50	0.01
2/22/2011	22.27	4669.73	0.23
11/1/2011	27.13	4664.87	-4.86
4/5/2012	23.31	4668.69	3.82
1/28/2013	27.76	4664.24	-4.45
3/4/2014	27.40	4664.60	0.36
1/27/2015	28.54	4663.46	-1.14
1/28/2016	27.41	4664.59	1.13
2/2/2017	26.57	4665.43	0.84

All Historic Measurements



LOST CREEK

Well Name: S-26A

Owner: CERVI RANCHES

Permit #: - -

Location #: SB00306326ACA

USGS Site ID:

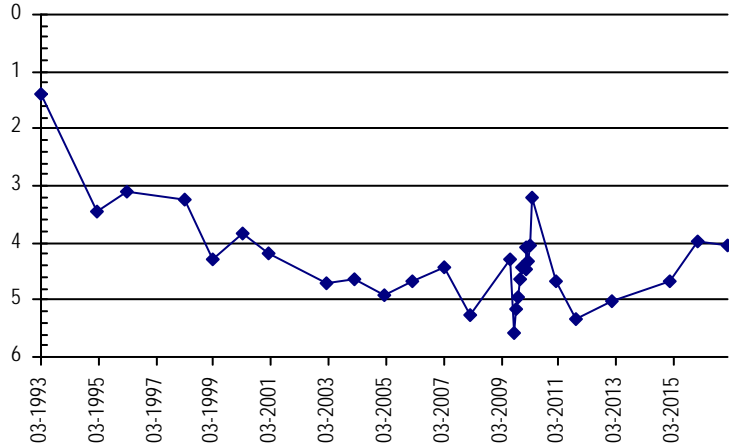
Division: 1 *Water District:* 1 *County:* WELD
Location: Q160 Q40 Q10 Section *Twtnshp* Range *PM* *Distance from section lines:*
 NE SW NE 26 3 N 63 W S *From N/S line:* *From E/W line:*
UTM Coordinates (NAD83): *Northing (UTM y):* 4449820.1 *Easting (UTM x):* 550930.2 *GPS*
Latitude/Longitude (decimal degrees): 40.197232 -104.401622

Surface Elevation (ft): 4710 *Top Perforated Interval (ft):* *Base of grout (ft):* **Water Level Change**
Well depth (ft): *Bottom Perforated Interval (ft):* **1 year:** -0.07
Aquifer(s): QUATERNARY ALLUVIUM **5 year:** 1.28
 10 year: 0.39

Measurements from last 10 years

Date	Depth to WL (ft)	Elev of WL (ft)	Change (ft)
3/21/2007	4.43	4705.57	0.25
2/26/2008	5.26	4704.74	-0.83
7/20/2009	4.28	4705.72	0.98
8/24/2009	5.59	4704.41	-1.31
9/24/2009	5.17	4704.83	0.42
10/23/2009	4.95	4705.05	0.22
11/24/2009	4.65	4705.35	0.30
12/22/2009	4.44	4705.56	0.21
1/27/2010	4.46	4705.54	-0.02
2/10/2010	4.08	4705.92	0.38
2/26/2010	4.34	4705.66	-0.26
3/31/2010	4.06	4705.94	0.28
4/28/2010	3.20	4706.80	0.86
2/22/2011	4.68	4705.32	-1.48
11/1/2011	5.32	4704.68	-0.64
1/28/2013	5.03	4704.97	0.29
1/27/2015	4.66	4705.34	0.37
1/28/2016	3.97	4706.03	0.69
2/2/2017	4.04	4705.96	-0.07

All Historic Measurements



LOST CREEK

Well Name: S-3A

Owner: SHELTON LAND & CATTLE

Permit #: 9523 - F -

Location #: SB00206208BAB

USGS Site ID:

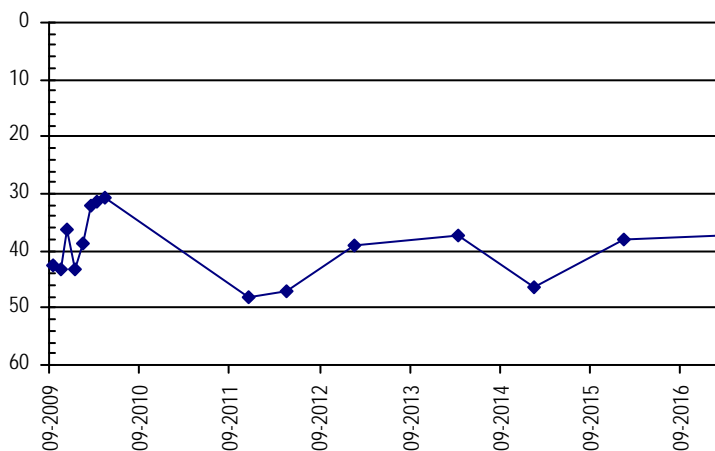
Division: 1 *Water District:* 1 *County:* WELD
Location: Q160 Q40 Q10 Section Twnshp Range PM Distance from section lines:
 NW NE NW 8 2 N 62 W S *From N/S line:* *From E/W line:*
UTM Coordinates (NAD83): *Northing (UTM y):* 4445660.0 *Easting (UTM x):* 555156.0 *GPS*
Latitude/Longitude (decimal degrees): 40.159487 -104.352333

Surface Elevation (ft): 4710 *Top Perforated Interval (ft):* 55 *Base of grout (ft):* **Water Level Change**
Well depth (ft): 96 *Bottom Perforated Interval (ft):* 95 **1 year:** 0.77
Aquifer(s): QUATERNARY ALLUVIUM **5 year:** 9.82
 10 year:

Measurements from last 10 years

Date	Depth to WL (ft)	Elev of WL (ft)	Change (ft)
9/24/2009	42.69	4667.31	
10/23/2009	43.22	4666.78	-0.53
11/24/2009	36.41	4673.59	6.81
12/22/2009	43.21	4666.79	-6.80
1/27/2010	38.76	4671.24	4.45
2/26/2010	32.00	4678.00	6.76
3/31/2010	31.27	4678.73	0.73
4/28/2010	30.73	4679.27	0.54
11/1/2011	48.09	4661.91	-17.36
4/5/2012	47.02	4662.98	1.07
1/28/2013	38.97	4671.03	8.05
3/4/2014	37.47	4672.53	1.50
1/27/2015	46.24	4663.76	-8.77
1/28/2016	37.97	4672.03	8.27
2/2/2017	37.20	4672.80	0.77

All Historic Measurements



LOST CREEK

Well Name: **SP-31**

Owner: BLOOD,C.

Permit #: 14860 - RFP -

Location #: SB00106334BBB

USGS Site ID: 400054104255601

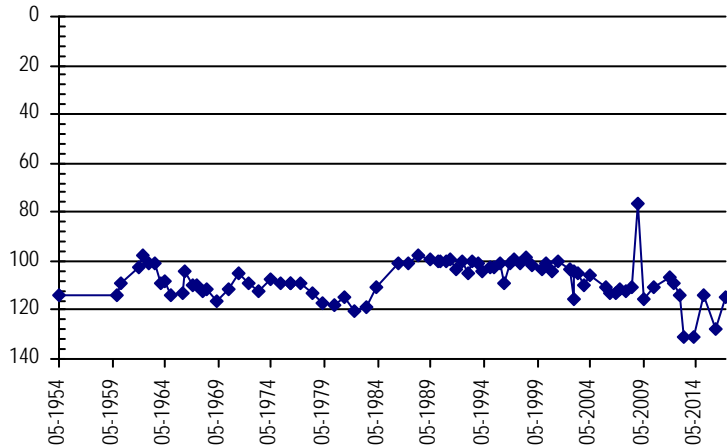
Division: 1 *Water District:* 1 *County:* WELD
Location: Q160 Q40 Q10 Section Twnshp Range PM Distance from section lines:
 NW NW NW 34 1 N 63 W S *From N/S line:* *From E/W line:*
UTM Coordinates (NAD83): *Northing (UTM y):* 4429584.0 *Easting (UTM x):* 548374.0 *GPS*
Latitude/Longitude (decimal degrees): 40.015073 -104.433169

Surface Elevation (ft): 4965.79 *Top Perforated Interval (ft):* *Base of grout (ft):* **Water Level Change**
Well depth (ft): 163 *Bottom Perforated Interval (ft):* **1 year:** 12.45
Aquifer(s): **5 year:** -6.19
10 year: -3.10

Measurements from last 10 years

Date	Depth to WL (ft)	Elev of WL (ft)	Change (ft)
3/14/2007	111.89	4853.90	1.12
10/17/2007	112.27	4853.52	-0.38
3/10/2008	111.08	4854.71	1.19
10/21/2008	76.35	4889.44	34.73
5/14/2009	115.80	4849.99	-39.45
4/9/2010	110.40	4855.39	5.40
10/19/2011	106.42	4859.37	3.98
3/23/2012	108.80	4856.99	-2.38
10/18/2012	114.01	4851.78	-5.21
3/26/2013	131.38	4834.41	-17.37
3/5/2014	130.72	4835.07	0.66
1/28/2015	113.77	4852.02	16.95
1/29/2016	127.44	4838.35	-13.67
2/3/2017	114.99	4850.80	12.45

All Historic Measurements



Well Name: **SP-37**

Owner: U.S.G.S. OBS. WELL

Permit #: - -

Location #: SB00106302CCC

USGS Site ID: 400427104244801

Division: 1 *Water District:* 1 *County:* WELD
Location: Q160 Q40 Q10 Section Twnshp Range PM Distance from section lines:
 SW SW SW 2 1 N 63 W S *From N/S line:* *From E/W line:*
UTM Coordinates (NAD83): *Northing (UTM y):* 4436142.0 *Easting (UTM x):* 549960.0 *GPS*
Latitude/Longitude (decimal degrees): 40.074063 -104.414080

Surface Elevation (ft): 4824.74 *Top Perforated Interval (ft):* *Base of grout (ft):* **Water Level Change**
Well depth (ft): 75 *Bottom Perforated Interval (ft):* **1 year:** 2.07
Aquifer(s): QUATERNARY ALLUVIUM **5 year:**
10 year:

Measurements from last 10 years

Date	Depth to WL (ft)	Elev of WL (ft)	Change (ft)
3/5/2014	68.23	4756.51	-9.03
1/28/2015	66.79	4757.95	1.44
1/29/2016	63.44	4761.30	3.35
2/3/2017	61.37	4763.37	2.07

All Historic Measurements

