

**GROUNDWATER LEVELS
in the
LOST CREEK
DESIGNATED GROUND WATER BASIN
2014**



by
Ralf Topper



COLORADO
Division of Water Resources
Department of Natural Resources

John W Hickenlooper
Governor

Mike King
Executive Director

Dick Wolfe
State Engineer

Matt Sares
Project Manager

LOST CREEK DESIGNATED GROUND WATER BASIN 2014

This report contains the basic groundwater level data collected from wells in the Lost Creek Designated Basin during the period from 2004 through 2014. A separate report was not published for 2013. Acquisition and publication of this information is a cooperative effort between the well owners, Lost Creek Ground Water Management District and the Colorado Division of Water Resources. The project is part of a statewide groundwater level monitoring program funded by Senate Bill 200 (1987 legislative session). This legislation directed that a portion of the fees collected for water well permit applications be used for the establishment of a program to monitor water level trends throughout the state.

New to the report this year is a modification to the time axis of the hydrographs. All available water level data, for each well, is now plotted as a true time series versus sequential data points. As in previous reports, the accompanying data table only lists data from the last 10 years. The report also contains data from wells, which are part of this monitoring effort, but for which measurements were not available in 2013 and/or 2014. Wells lacking measurements in the past 10 years have been removed from the monitoring program and are no longer included in this publication.

Water level measurements were collected from twenty-eight wells in early March 2014. The locations of those wells and the extent of the alluvial aquifer are shown on the following map. Previous work in the basin (Topper, 2011) suggests that analysis of groundwater levels by sub-regions is appropriate. Water level measurements are typically recorded in the winter or spring of each year. The 2014 water levels produced the following general conclusions:

North Area: North of Roggen/I-76 to Hwy 34

- Depth to water generally ranges from 5 to 30 feet (excluding N-11). Water levels between 2013 and 2014 were relatively stable. Longer term averages indicate a decline of nearly 2 feet over 5 years, and nearly 4 feet over 10 years.

Middle Area: Between Roggen/I-76 and Prospect Valley/Hwy 52

- Depth to water generally ranges from 12 to 68 feet. On average, water levels dropped slightly between 2013 and 2014. Longer term averages indicate a decline of nearly 1.5 feet over 5 years, and 14 feet over 10 years.

South Area: South of Prospect Valley/Hwy 52 to 144th Avenue

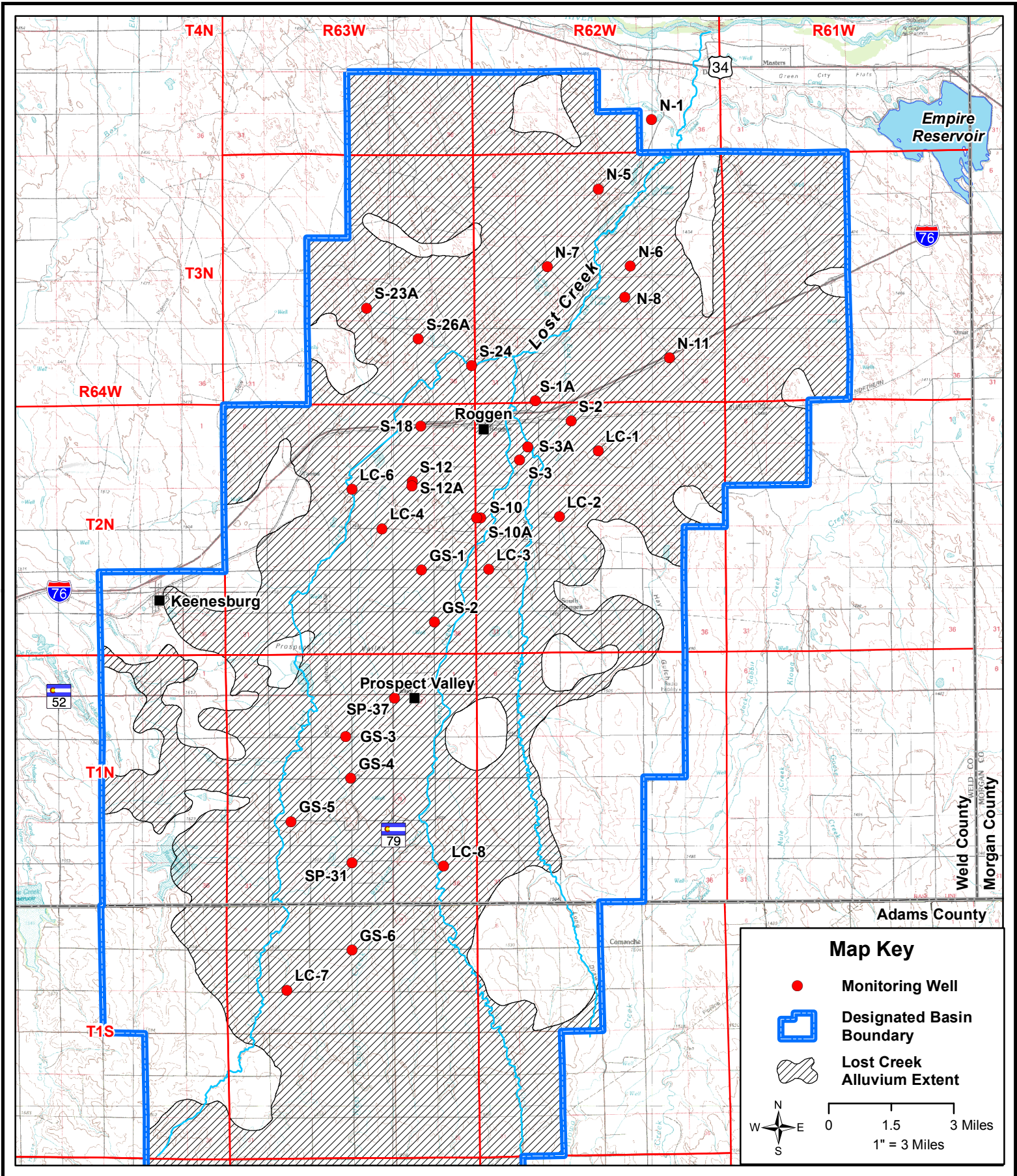
- Depth to water generally ranges from 48 to 130 feet. Water levels declined approximately 2 feet between 2013 and 2014. Longer term averages indicate a decline of 4 feet over 5 years, and 14 feet over 10 years.

On average, ground water levels in wells measured by the Division of Water Resources were down by 0.7 feet compared to 2013. The medium term, 5-year trend, showed both rises and declines that averaged out to 3 feet of decline. Over the long term, 10-year trend, all wells exhibited a decline within the basin with the average being 10.5 feet. To assist stakeholders in evaluating groundwater flow directions and gradients, we include a water table elevation map compiled from Spring 2010, that was produced for the basin's 2011 recharge and storage study.

An electronic copy of this report, in Adobe PDF format, is available on the Division of Water Resources website <http://water.state.co.us/groundwater/Pages/HydroGeo.aspx>.

Hardcopy reports may be obtained from the Colorado Division of Water Resources, Public Records Section at 1313 Sherman Street, Room 818, Denver, CO 80203. Additionally, all groundwater level data may be accessed and exported using the tools available on the Colorado Decision Support System website:
<http://cdss.state.co.us/onlineTools/Pages/GroundWaterWaterLevels.aspx>

If you have any question regarding alluvial groundwater and the information in this report, please contact the Groundwater Information Desk at (303) 866-3587.

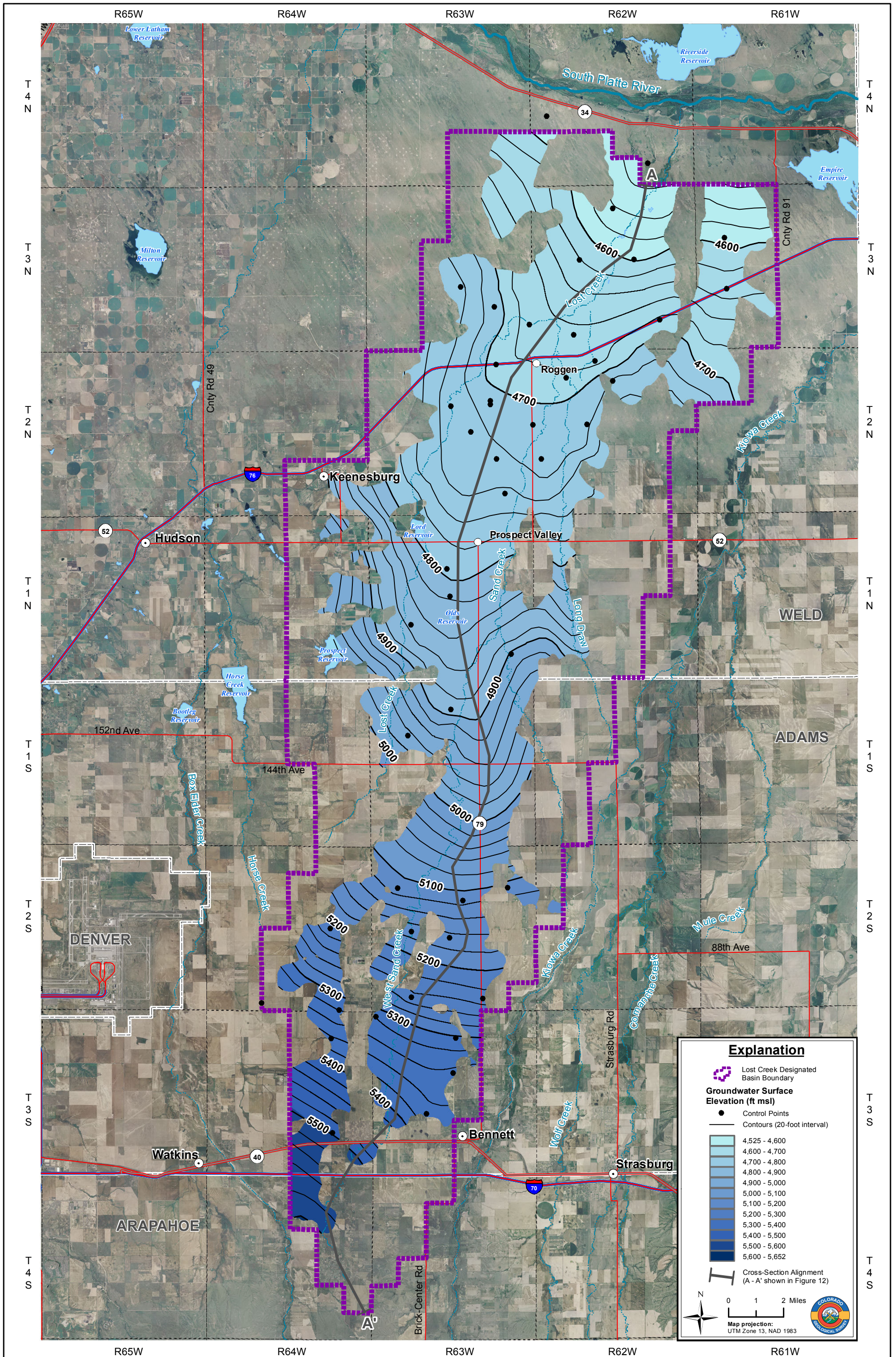


State of Colorado -- Division of Water Resources
**Lost Creek Designated Basin
 Monitoring Well Locations**



COLORADO
 Division of Water Resources
 Department of Natural Resources

THIS PAGE INTENTIONALLY BLANK



**Alluvial Groundwater Elevation - Spring 2010
Lost Creek Basin Aquifer Recharge and Storage Study**

Figure 11

THIS PAGE INTENTIONALLY BLANK

LOST CREEK

Well Name: S-2

Owner: WILLIAM KLEIN

Permit #: - -

Location #: SB00206204BDD

USGS Site ID:

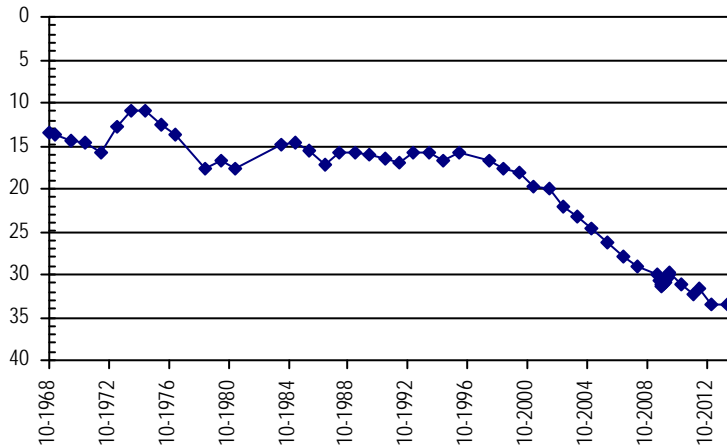
Division: 1 *Water District:* 1 *County:* WELD
Location: Q160 Q40 Q10 Section *Twtnshp* *Range* *PM* *Distance from section lines:*
 NW SE SE 4 2 N 62 W S *From N/S line:* *From E/W line:*
UTM Coordinates (NAD83): *Northing (UTM y):* 4446651.0 *Easting (UTM x):* 556833.2 *GPS*
Latitude/Longitude (decimal degrees): 40.168303 -104.332553

Surface Elevation (ft): 4695 *Top Perforated Interval (ft):* *Base of grout (ft):* **Water Level Change**
Well depth (ft): 36 *Bottom Perforated Interval (ft):* **1 year:** 0.01
Aquifer(s): QUATERNARY ALLUVIUM **5 year:** **10 year:** -10.36

Measurements from last 10 years

Date	Depth to WL (ft)	Elev of WL (ft)	Change (ft)
2/18/2004	23.23	4671.77	-1.18
2/15/2005	24.73	4670.27	-1.50
2/7/2006	26.18	4668.82	-1.45
3/21/2007	27.85	4667.15	-1.67
2/26/2008	29.02	4665.98	-1.17
7/20/2009	29.93	4665.07	-0.91
8/24/2009	30.66	4664.34	-0.73
9/24/2009	31.15	4663.85	-0.49
10/23/2009	31.29	4663.71	-0.14
11/24/2009	31.12	4663.88	0.17
12/22/2009	30.91	4664.09	0.21
1/27/2010	30.61	4664.39	0.30
2/10/2010	30.51	4664.49	0.10
2/26/2010	30.33	4664.67	0.18
3/31/2010	30.01	4664.99	0.32
4/28/2010	29.75	4665.25	0.26
2/22/2011	31.23	4663.77	-1.48
11/1/2011	32.34	4662.66	-1.11
4/5/2012	31.53	4663.47	0.81
1/28/2013	33.60	4661.40	-2.07
3/4/2014	33.59	4661.41	0.01

All Historic Measurements



LOST CREEK

Well Name: S-18 **Owner:** COLORADO DEPARTMENT OF TRANSPOR
Permit #: - - **Location #:** SB00206302DBA **USGS Site ID:**

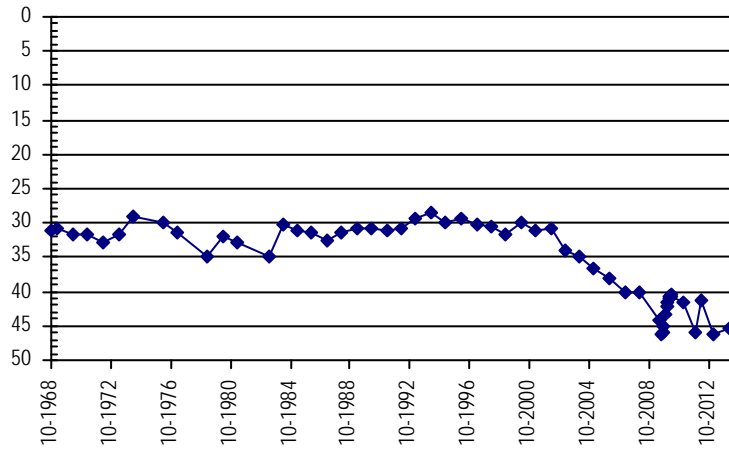
Division: 1 **Water District:** 1 **County:** WELD
Location: Q160 Q40 Q10 Section Twnshp Range PM Distance from section lines:
 SE NW NE 2 2 N 63 W S **From N/S line:** **From E/W line:**
UTM Coordinates (NAD83): Northing (UTM y): 4446449.3 Easting (UTM x): 551027.6 GPS
Latitude/Longitude (decimal degrees): 40.166859 -104.400746

Surface Elevation (ft): 4737.42 **Top Perforated Interval (ft):** **Base of grout (ft):** **Water Level Change**
Well depth (ft): **Bottom Perforated Interval (ft):** **1 year:** 1.05
Aquifer(s): QUATERNARY ALLUVIUM **5 year:**
10 year: -10.33

Measurements from last 10 years

Date	Depth to WL (ft)	Elev of WL (ft)	Change (ft)
2/18/2004	34.92	4702.50	-1.04
2/15/2005	36.61	4700.81	-1.69
2/7/2006	38.08	4699.34	-1.47
3/21/2007	40.19	4697.23	-2.11
2/26/2008	40.22	4697.20	-0.03
7/20/2009	44.24	4693.18	-4.02
8/24/2009	46.33	4691.09	-2.09
9/24/2009	45.82	4691.60	0.51
10/23/2009	44.95	4692.47	0.87
11/24/2009	43.40	4694.02	1.55
12/22/2009	42.28	4695.14	1.12
1/27/2010	41.47	4695.95	0.81
2/10/2010	41.05	4696.37	0.42
2/26/2010	40.79	4696.63	0.26
3/31/2010	40.52	4696.90	0.27
4/28/2010	40.57	4696.85	-0.05
2/22/2011	41.49	4695.93	-0.92
11/1/2011	45.90	4691.52	-4.41
4/5/2012	41.29	4696.13	4.61
1/28/2013	46.30	4691.12	-5.01
3/4/2014	45.25	4692.17	1.05

All Historic Measurements



LOST CREEK

Well Name: **GS-2**

Owner:

Permit #: - -

Location #: SB00206336BCB

USGS Site ID: 400554104234001

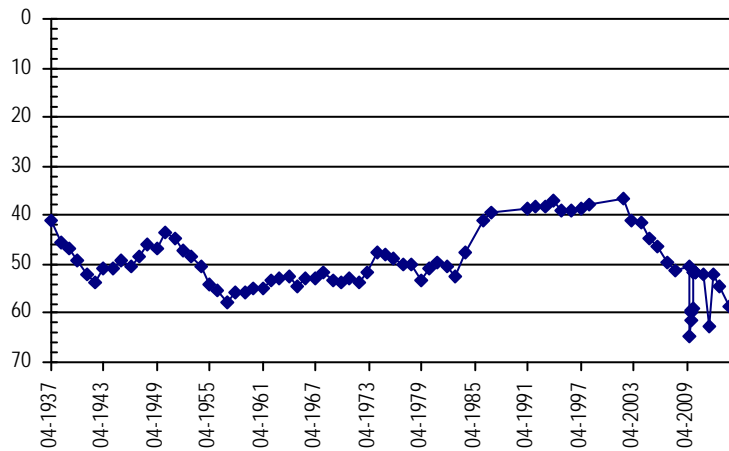
Division: 1 *Water District:* 1 *County:* WELD
Location: Q160 Q40 Q10 Section *Twtnshp* *Range* *PM* *Distance from section lines:*
 NW SW NW 36 2 N 63 W S *From N/S line:* *From E/W line:*
UTM Coordinates (NAD83): *Northing (UTM y):* 4438872.0 *Easting (UTM x):* 551561.0 *GPS*
Latitude/Longitude (decimal degrees): 40.098562 -104.395087

Surface Elevation (ft): 4797.73 *Top Perforated Interval (ft):* *Base of grout (ft):* **Water Level Change**
Well depth (ft): *Bottom Perforated Interval (ft):* **1 year:** -4.18
Aquifer(s): QUATERNARY ALLUVIUM **5 year:** **10 year:** -17.07

Measurements from last 10 years

Date	Depth to WL (ft)	Elev of WL (ft)	Change (ft)
2/18/2004	41.69	4756.04	-0.75
2/15/2005	44.62	4753.11	-2.93
2/7/2006	46.33	4751.40	-1.71
3/21/2007	49.67	4748.06	-3.34
2/26/2008	51.12	4746.61	-1.45
7/20/2009	50.41	4747.32	0.71
9/25/2009	64.69	4733.04	-14.28
10/23/2009	61.25	4736.48	3.44
11/24/2009	59.87	4737.86	1.38
12/22/2009	59.54	4738.19	0.33
1/27/2010	59.11	4738.62	0.43
2/10/2010	51.86	4745.87	7.25
2/26/2010	51.85	4745.88	0.01
3/31/2010	51.82	4745.91	0.03
4/28/2010	51.76	4745.97	0.06
2/22/2011	52.05	4745.68	-0.29
11/1/2011	62.57	4735.16	-10.52
4/5/2012	52.15	4745.58	10.42
1/28/2013	54.58	4743.15	-2.43
3/4/2014	58.76	4738.97	-4.18

All Historic Measurements



LOST CREEK

Well Name: N-5

Owner: ROSS SEYFRIED

Permit #: - -

Location #: SB00306203CCC

USGS Site ID:

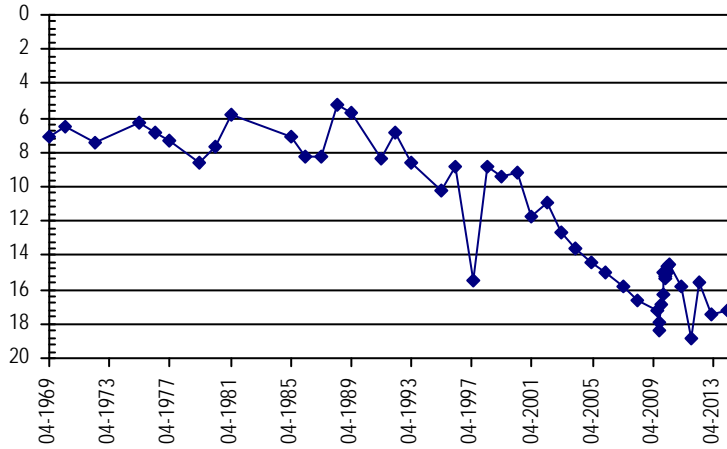
Division: 1 *Water District:* 1 *County:* WELD
Location: Q160 Q40 Q10 Section *Twtnshp* *Range* *PM* *Distance from section lines:*
 SW SW SW 3 3 N 62 W S *From N/S line:* *From E/W line:*
UTM Coordinates (NAD83): *Northing (UTM y):* 4455609.0 *Easting (UTM x):* 557885.3 *GPS*
Latitude/Longitude (decimal degrees): 40.248932 -104.319391

Surface Elevation (ft): 4592 *Top Perforated Interval (ft):* *Base of grout (ft):* **Water Level Change**
Well depth (ft): *Bottom Perforated Interval (ft):* **1 year:** 0.29
Aquifer(s): QUATERNARY ALLUVIUM **5 year:** **10 year:** -3.54

Measurements from last 10 years

Date	Depth to WL (ft)	Elev of WL (ft)	Change (ft)
2/18/2004	13.62	4578.38	-0.93
2/15/2005	14.46	4577.54	-0.84
2/7/2006	14.97	4577.03	-0.51
3/21/2007	15.79	4576.21	-0.82
2/26/2008	16.61	4575.39	-0.82
7/20/2009	17.18	4574.82	-0.57
8/24/2009	18.36	4573.64	-1.18
9/24/2009	17.85	4574.15	0.51
10/23/2009	16.91	4575.09	0.94
11/24/2009	16.27	4575.73	0.64
12/22/2009	15.01	4576.99	1.26
1/27/2010	15.40	4576.60	-0.39
2/10/2010	15.22	4576.78	0.18
2/26/2010	15.05	4576.95	0.17
3/31/2010	14.70	4577.30	0.35
4/28/2010	14.57	4577.43	0.13
2/22/2011	15.78	4576.22	-1.21
11/1/2011	18.78	4573.22	-3.00
4/5/2012	15.56	4576.44	3.22
1/28/2013	17.45	4574.55	-1.89
3/4/2014	17.16	4574.84	0.29

All Historic Measurements



LOST CREEK

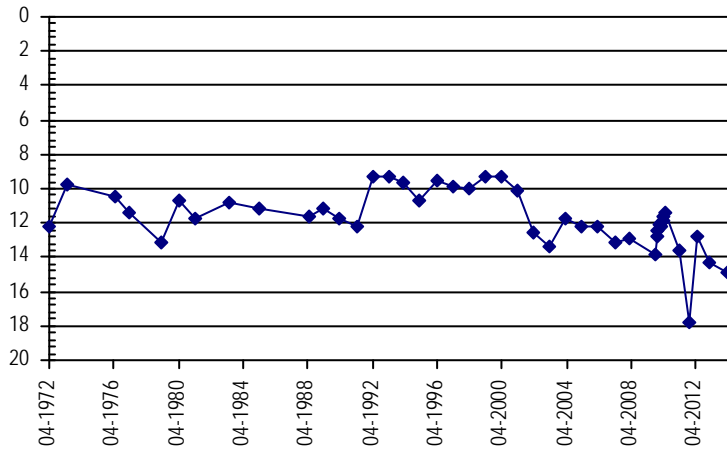
Well Name:	N-6	<i>Owner:</i> PREMIER CORP	
<i>Permit #:</i>	12174 - F -	<i>Location #:</i> SB00306214BAC	<i>USGS Site ID:</i>
<i>Division:</i>	1	<i>Water District:</i> 1	<i>County:</i> WELD
<i>Location:</i>	Q160 Q40 Q10 Section	Twtnshp Range PM	Distance from section lines:
	NW NE SW 14	3 N 62 W S	<i>From N/S line:</i> <i>From E/W line:</i>
<i>UTM Coordinates (NAD83):</i>	<i>Northing (UTM y):</i> 4452631.0	<i>Easting (UTM x):</i> 559127.2	<i>GPS</i>
<i>Latitude/Longitude (decimal degrees):</i>	40.222017	-104.305064	
<i>Surface Elevation (ft):</i>	4612	<i>Top Perforated Interval (ft):</i>	<i>Base of grout (ft):</i>
<i>Well depth (ft):</i>	87	<i>Bottom Perforated Interval (ft):</i>	
<i>Aquifer(s):</i>	QUATERNARY ALLUVIUM		

Water Level Change
1 year: -0.59
5 year:
10 year: -3.15

Measurements from last 10 years

Date	Depth to WL (ft)	Elev of WL (ft)	Change (ft)
2/18/2004	11.69	4600.31	1.67
2/15/2005	12.19	4599.81	-0.50
2/7/2006	12.18	4599.82	0.01
3/21/2007	13.11	4598.89	-0.93
2/26/2008	12.96	4599.04	0.15
9/24/2009	13.79	4598.21	-0.83
10/23/2009	12.80	4599.20	0.99
11/24/2009	12.43	4599.57	0.37
12/22/2009	12.06	4599.94	0.37
1/27/2010	11.96	4600.04	0.10
2/10/2010	12.26	4599.74	-0.30
2/26/2010	11.87	4600.13	0.39
3/31/2010	11.57	4600.43	0.30
4/28/2010	11.35	4600.65	0.22
2/22/2011	13.62	4598.38	-2.27
11/1/2011	17.83	4594.17	-4.21
4/5/2012	12.76	4599.24	5.07
1/28/2013	14.25	4597.75	-1.49
3/4/2014	14.84	4597.16	-0.59

All Historic Measurements



LOST CREEK

Well Name: N-11

Owner: COLORADO DEPARTMENT OF TRANSPOR

Permit #: - -

Location #: SB00306226DCD

USGS Site ID:

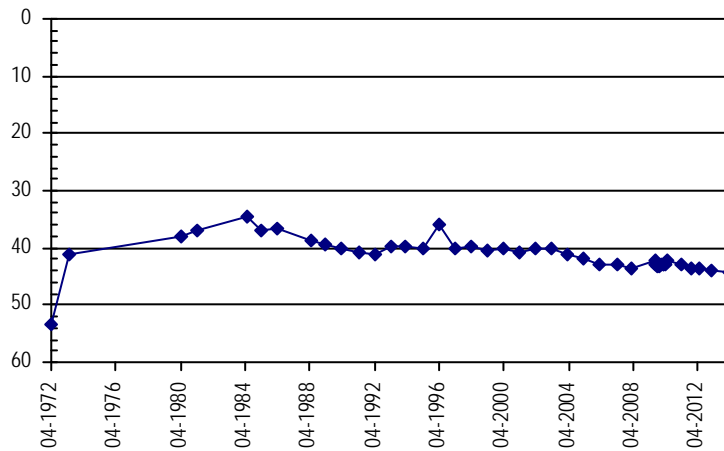
Division: 1 **Water District:** 1 **County:** WELD
Location: Q160 Q40 Q10 Section **Twnshp** **Range** **PM** **Distance from section lines:**
 SE SW SE 26 3 N 62 W S **From N/S line:** **From E/W line:**
UTM Coordinates (NAD83): **Northing (UTM y):** 4449081.8 **Easting (UTM x):** 560640.6 *GPS*
Latitude/Longitude (decimal degrees): 40.189935 -104.287613

Surface Elevation (ft): 4722.05 **Top Perforated Interval (ft):** **Base of grout (ft):** **Water Level Change**
Well depth (ft): **Bottom Perforated Interval (ft):** **1 year:** -0.32
Aquifer(s): QUATERNARY ALLUVIUM **5 year:** **10 year:** -3.26

Measurements from last 10 years

Date	Depth to WL (ft)	Elev of WL (ft)	Change (ft)
2/18/2004	41.14	4680.91	-1.00
2/15/2005	41.99	4680.06	-0.85
2/7/2006	42.78	4679.27	-0.79
3/21/2007	42.89	4679.16	-0.11
2/26/2008	43.70	4678.35	-0.81
7/20/2009	42.37	4679.68	1.33
8/24/2009	42.85	4679.20	-0.48
9/24/2009	43.18	4678.87	-0.33
10/23/2009	43.03	4679.02	0.15
11/24/2009	43.09	4678.96	-0.06
12/22/2009	42.74	4679.31	0.35
1/27/2010	42.82	4679.23	-0.08
2/10/2010	42.85	4679.20	-0.03
2/26/2010	42.91	4679.14	-0.06
3/31/2010	42.51	4679.54	0.40
4/28/2010	42.35	4679.70	0.16
2/22/2011	42.95	4679.10	-0.60
11/1/2011	43.46	4678.59	-0.51
4/5/2012	43.60	4678.45	-0.14
1/28/2013	44.08	4677.97	-0.48
3/4/2014	44.40	4677.65	-0.32

All Historic Measurements



LOST CREEK

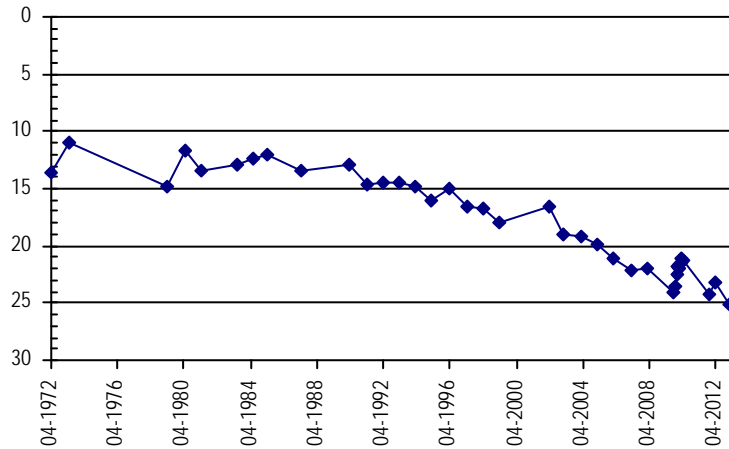
Well Name:	N-7		<i>Owner:</i> CERVI RANCHES
<i>Permit #:</i>	12225 - F -	<i>Location #:</i> SB00306227DAD	<i>USGS Site ID:</i>
<i>Division:</i>	1	<i>Water District:</i> 1	<i>County:</i> WELD
<i>Location:</i>	Q160 Q40 Q10 Section	Twtnshp Range PM	<i>Distance from section lines:</i>
	SE NE SE 27	3 N 62 W S	<i>From N/S line:</i> <i>From E/W line:</i>
<i>UTM Coordinates (NAD83):</i>	<i>Northing (UTM y):</i> 4452605.6	<i>Easting (UTM x):</i> 555915.0	<i>GPS</i>
<i>Latitude/Longitude (decimal degrees):</i>	40.222009	-104.342818	
<i>Surface Elevation (ft):</i>	4646.48	<i>Top Perforated Interval (ft):</i>	<i>Base of grout (ft):</i>
<i>Well depth (ft):</i>	109	<i>Bottom Perforated Interval (ft):</i>	
<i>Aquifer(s):</i>	QUATERNARY ALLUVIUM		

Water Level Change
1 year:
5 year:
10 year:

Measurements from last 10 years

Date	Depth to WL (ft)	Elev of WL (ft)	Change (ft)
2/18/2004	19.13	4627.35	-0.14
2/15/2005	19.80	4626.68	-0.67
2/7/2006	21.15	4625.33	-1.35
3/21/2007	22.21	4624.27	-1.06
2/26/2008	21.94	4624.54	0.27
9/24/2009	24.12	4622.36	-2.18
10/23/2009	23.50	4622.98	0.62
11/24/2009	22.45	4624.03	1.05
12/22/2009	21.80	4624.68	0.65
1/27/2010	21.59	4624.89	0.21
2/10/2010	21.90	4624.58	-0.31
2/26/2010	21.37	4625.11	0.53
3/31/2010	21.17	4625.31	0.20
4/28/2010	21.22	4625.26	-0.05
11/1/2011	24.28	4622.20	-3.06
4/5/2012	23.27	4623.21	1.01
1/28/2013	25.03	4621.45	-1.76
3/4/2014			

All Historic Measurements



LOST CREEK

Well Name: **S-1A_REPLACE** **Owner:** LOST CREEK LAND & CATTLE CO.
Permit #: 9596 - FP - R **Location #:** SB00306232AC **USGS Site ID:**

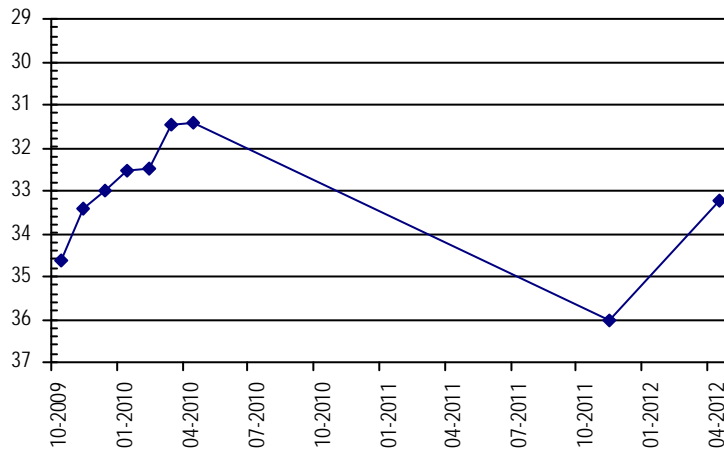
Division: 1 **Water District:** 1 **County:** WELD
Location: Q160 Q40 Q10 Section Twtnshp Range PM **Distance from section lines:**
NE SW 32 3 N 62 W S **From N/S line:** **From E/W line:**
UTM Coordinates (NAD83): **Northing (UTM y):** 4448205.0 **Easting (UTM x):** 555590.0 *GPS*
Latitude/Longitude (decimal degrees): 40.182386 -104.347018

Surface Elevation (ft): 4692 **Top Perforated Interval (ft):** 61 **Base of grout (ft):** **Water Level Change**
Well depth (ft): 105 **Bottom Perforated Interval (ft):** 101 **1 year:**
Aquifer(s): QUATERNARY ALLUVIUM **5 year:**
10 year:

Measurements from last 10 years

Date	Depth to WL (ft)	Elev of WL (ft)	Change (ft)
10/23/2009	34.62	4657.38	
11/24/2009	33.40	4658.60	1.22
12/22/2009	32.98	4659.02	0.42
1/27/2010	32.52	4659.48	0.46
2/26/2010	32.50	4659.50	0.02
3/31/2010	31.45	4660.55	1.05
4/28/2010	31.40	4660.60	0.05
11/1/2011	36.04	4655.96	-4.64
4/5/2012	33.25	4658.75	2.79

All Historic Measurements



LOST CREEK

Well Name: S-23A

Owner: CERVI RANCH

Permit #: - -

Location #: SB00306322CAD

USGS Site ID:

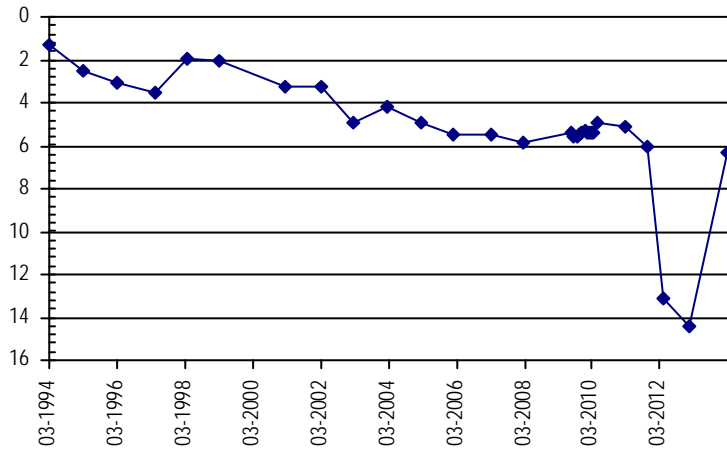
Division: 1 *Water District:* 1 *County:* WELD
Location: Q160 Q40 Q10 Section *Twtnshp* *Range* *PM* *Distance from section lines:*
 SW NE SE 22 3 N 63 W S *From N/S line:* *From E/W line:*
UTM Coordinates (NAD83): *Northing (UTM y):* 4451023.1 *Easting (UTM x):* 548944.2 *GPS*
Latitude/Longitude (decimal degrees): 40.208188 -104.424863

Surface Elevation (ft): 4747 *Top Perforated Interval (ft):* *Base of grout (ft):* **Water Level Change**
Well depth (ft): *Bottom Perforated Interval (ft):* **1 year:** 8.11
Aquifer(s): QUATERNARY ALLUVIUM **5 year:** **10 year:** -2.11

Measurements from last 10 years

Date	Depth to WL (ft)	Elev of WL (ft)	Change (ft)
2/18/2004	4.20	4742.80	0.70
2/15/2005	4.94	4742.06	-0.74
2/7/2006	5.51	4741.49	-0.57
3/21/2007	5.52	4741.48	-0.01
2/26/2008	5.88	4741.12	-0.36
7/20/2009	5.36	4741.64	0.52
8/24/2009	5.61	4741.39	-0.25
9/24/2009	5.56	4741.44	0.05
10/23/2009	5.51	4741.49	0.05
11/24/2009	5.40	4741.60	0.11
12/22/2009	5.34	4741.66	0.06
1/27/2010	5.37	4741.63	-0.03
2/10/2010	5.38	4741.62	-0.01
2/26/2010	5.39	4741.61	-0.01
3/31/2010	5.36	4741.64	0.03
4/28/2010	4.92	4742.08	0.44
2/22/2011	5.13	4741.87	-0.21
11/1/2011	6.02	4740.98	-0.89
4/5/2012	13.16	4733.84	-7.14
1/28/2013	14.42	4732.58	-1.26
3/4/2014	6.31	4740.69	8.11

All Historic Measurements



LOST CREEK

Well Name: S-24

Owner: CERVI RANCHES

Permit #: - -

Location #: SB00306325DDD

USGS Site ID:

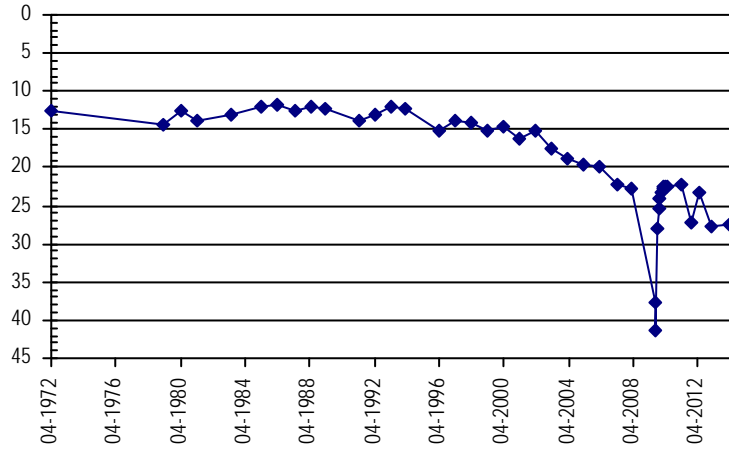
Division: 1 *Water District:* 1 *County:* WELD
Location: Q160 Q40 Q10 Section *Twtnshp* *Range* *PM* *Distance from section lines:*
 SE SE SE 25 3 N 63 W S *From N/S line:* *From E/W line:*
UTM Coordinates (NAD83): *Northing (UTM y):* 4448793.0 *Easting (UTM x):* 552991.2 *GPS*
Latitude/Longitude (decimal degrees): 40.187852 -104.377494

Surface Elevation (ft): 4692 *Top Perforated Interval (ft):* *Base of grout (ft):* **Water Level Change**
Well depth (ft): *Bottom Perforated Interval (ft):* **1 year:** 0.36
Aquifer(s): QUATERNARY ALLUVIUM **5 year:** **10 year:** -8.55

Measurements from last 10 years

Date	Depth to WL (ft)	Elev of WL (ft)	Change (ft)
2/18/2004	18.85	4673.15	-1.25
2/15/2005	19.54	4672.46	-0.69
2/7/2006	19.79	4672.21	-0.25
3/21/2007	22.32	4669.68	-2.53
2/26/2008	22.76	4669.24	-0.44
7/20/2009	37.64	4654.36	-14.88
8/24/2009	41.26	4650.74	-3.62
9/24/2009	28.12	4663.88	13.14
10/23/2009	25.41	4666.59	2.71
11/24/2009	24.06	4667.94	1.35
12/22/2009	23.20	4668.80	0.86
1/27/2010	22.66	4669.34	0.54
2/10/2010	22.42	4669.58	0.24
2/26/2010	22.51	4669.49	-0.09
4/28/2010	22.50	4669.50	0.01
2/22/2011	22.27	4669.73	0.23
11/1/2011	27.13	4664.87	-4.86
4/5/2012	23.31	4668.69	3.82
1/28/2013	27.76	4664.24	-4.45
3/4/2014	27.40	4664.60	0.36

All Historic Measurements



LOST CREEK

Well Name: N-1

Owner: ROSS SEYFRIED

Permit #: - -

Location #: SB00406235BAC

USGS Site ID:

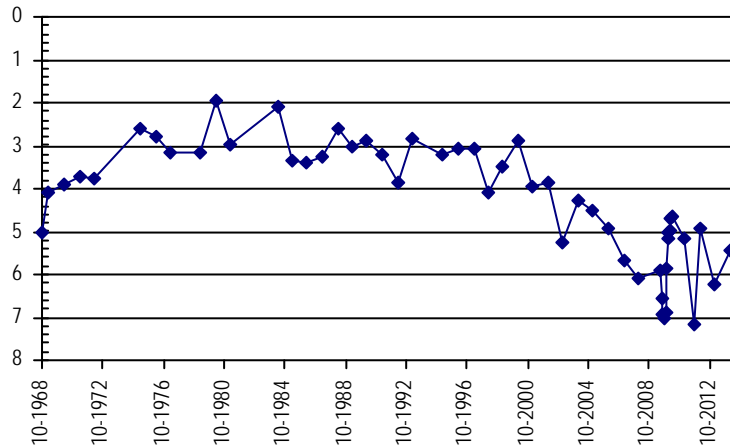
Division: 1 *Water District:* 1 *County:* WELD
Location: Q160 Q40 Q10 Section *Twtnshp* *Range* *PM* *Distance from section lines:*
 NW NE SW 35 4 N 62 W S *From N/S line:* *From E/W line:*
UTM Coordinates (NAD83): *Northing (UTM y):* 4458286.1 *Easting (UTM x):* 559944.3 *GPS*
Latitude/Longitude (decimal degrees): 40.272904 -104.294933

Surface Elevation (ft): 4540 *Top Perforated Interval (ft):* *Base of grout (ft):* **Water Level Change**
Well depth (ft): 51 *Bottom Perforated Interval (ft):* **1 year:** 0.80
Aquifer(s): QUATERNARY ALLUVIUM **5 year:** **10 year:** -1.14

Measurements from last 10 years

Date	Depth to WL (ft)	Elev of WL (ft)	Change (ft)
2/18/2004	4.29	4535.71	0.97
2/15/2005	4.50	4535.50	-0.21
2/7/2006	4.94	4535.06	-0.44
3/21/2007	5.67	4534.33	-0.73
2/26/2008	6.07	4533.93	-0.40
7/20/2009	5.93	4534.07	0.14
8/24/2009	6.58	4533.42	-0.65
9/24/2009	6.93	4533.07	-0.35
10/23/2009	7.00	4533.00	-0.07
11/24/2009	6.88	4533.12	0.12
12/22/2009	5.84	4534.16	1.04
1/27/2010	5.15	4534.85	0.69
2/10/2010	5.00	4535.00	0.15
2/26/2010	4.96	4535.04	0.04
3/31/2010	4.72	4535.28	0.24
4/28/2010	4.63	4535.37	0.09
2/22/2011	5.17	4534.83	-0.54
11/1/2011	7.18	4532.82	-2.01
4/5/2012	4.92	4535.08	2.26
1/28/2013	6.23	4533.77	-1.31
3/4/2014	5.43	4534.57	0.80

All Historic Measurements



LOST CREEK

Well Name: **GS-6** **Owner:** JOHN KILPATRICK
Permit #: 14856 - R - **Location #:** SC00106310BBB **USGS Site ID:** 395904104252901

Division: 1 **Water District:** 1 **County:** ADAMS
Location: Q160 Q40 Q10 Section Twnshp Range PM Distance from section lines:
NW NW NW 10 1 S 63 W S **From N/S line:** **From E/W line:**
UTM Coordinates (NAD83): **Northing (UTM y):** 4426200.9 **Easting (UTM x):** 548372.0 *GPS*
Latitude/Longitude (decimal degrees): 39.984593 -104.433445

Surface Elevation (ft): 5008.8 **Top Perforated Interval (ft):** **Base of grout (ft):** **Water Level Change**
Well depth (ft): 180 **Bottom Perforated Interval (ft):**
Aquifer(s): QUATERNARY ALLUVIUM **1 year:**
5 year:
10 year:

Measurements from last 10 years

Date	Depth to WL (ft)	Elev of WL (ft)	Change (ft)
2/18/2004	117.41	4891.39	-0.32
2/15/2005	118.22	4890.58	-0.81
2/7/2006	118.22	4890.58	0.00
3/21/2007	118.93	4889.87	-0.71
2/26/2008	119.59	4889.21	-0.66
7/20/2009	134.21	4874.59	-14.62
8/26/2009	137.58	4871.22	-3.37
9/25/2009	137.10	4871.70	0.48
10/23/2009	137.72	4871.08	-0.62
11/24/2009	132.59	4876.21	5.13
12/22/2009	139.43	4869.37	-6.84
1/27/2010	138.95	4869.85	0.48
2/10/2010	118.96	4889.84	19.99
2/26/2010	132.47	4876.33	-13.51
3/31/2010	125.96	4882.84	6.51
4/28/2010	118.64	4890.16	7.32
2/22/2011	118.53	4890.27	0.11
11/17/2011	118.90	4889.90	-0.37
4/5/2012	118.35	4890.45	0.55
1/28/2013	119.60	4889.20	-1.25

All Historic Measurements

