

GROUNDWATER LEVELS
in the
UPPER BLACK SQUIRREL CREEK
DESIGNATED GROUND WATER BASIN
2017



by
Andrew Flor



COLORADO
Division of Water Resources
Department of Natural Resources

John W. Hickenlooper
Governor

Robert W. Randall
Executive Director

Dick Wolfe
State Engineer

Matthew A. Sares
Project Manager

UPPER BLACK SQUIRREL CREEK
DESIGNATED GROUND WATER BASIN
2017

This report contains basic data concerning the depth to and elevation of groundwater in the Upper Black Squirrel Creek Designated Basin collected in early March 2017. As in previous reports, the accompanying data tables only list data from the last 10 years, though the hydrographs display the full period of record. Wells lacking measurements for the past 10 years have been removed from the monitoring program and are no longer included in this publication. Acquisition and publication of this information is a cooperative effort between the well owners, Upper Black Squirrel Creek Ground Water Management District, and the Colorado Division of Water Resources. The project is part of a statewide groundwater-level monitoring program funded by Senate Bill 200 (1987 legislative session). This legislation directed that a portion of the fees collected for water well permit applications be used for the establishment of a program to monitor water-level trends throughout the state.

The report contains water-level measurements from 35 wells. The locations of the wells and the extent of the alluvial aquifer are shown on the following map. Water-level measurements for 27 wells were recorded in early March 2017. Depth to groundwater below ground surface ranged from 8 to 146 feet. Water levels in excess of 100 feet deep were only measured at two locations: BS-15A and BS-SLB4.

The wells in this report are listed by well name in numerical order. Tabular data are presented for each well for the previous ten years while graphical data are presented for the entire period of record. Measurements for the full period of record may be accessed from **the Division of Water Resources' HydroBase** database. Wells lacking measurements in the past 10 years have been removed from the monitoring program and are no longer included in this publication. A map depicting water-table contours for January 2008 is included to give the user a sense of groundwater flow directions in the alluvial aquifer. This map is Plate 14 from the Colorado Geological Survey 2008 report on the basin.

Analyses of water-level changes in the aquifer are complicated by unknown pumping schedules. Overall, average groundwater levels at measured wells had virtually no change, 0.02 foot increase, from 2016. The largest decline of 2.69 feet was reported at well BS-04, while the greatest increase of 2.98 feet was reported at wells BS-16 and BS-17. Basin-wide, average water levels in 2017 were within approximately 1 foot of the 5-year and 10-year comparisons, indicating relatively static water levels.

An electronic copy of this report, in Adobe PDF format, is available on the Division of Water Resources website

<http://water.state.co.us/groundwater/Levels/Pages/HydroGeo.aspx>.

Additionally, all groundwater level data may be accessed and exported using the tools available on the Colorado Decision Support System:

<http://cdss.state.co.us/onlineTools/Pages/GroundWaterWaterLevels.aspx>

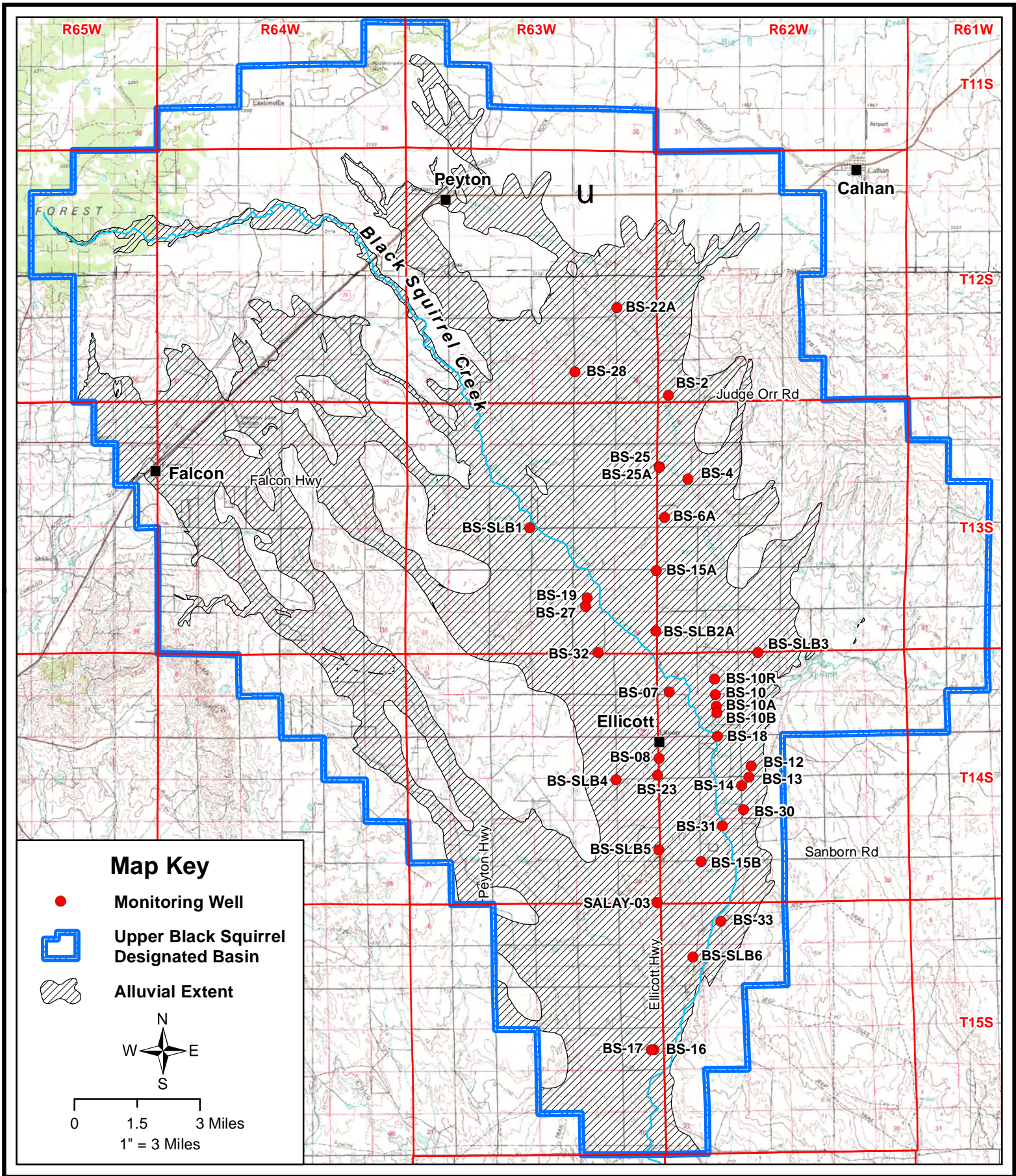
and the Colorado Information Marketplace HydroBase Bulk Data Exporter:

<https://data.colorado.gov/Information-Sharing/DWR-Well-Water-Level/hfwh-wsgi>

or the Colorado Decision Support System MapViewer

<http://water.state.co.us/DataMaps/GISandMaps/MapViewer/Pages/FAQ.aspx>

If you have any questions regarding groundwater in the Upper Black Squirrel Designated Ground Water Basin and the information in this report, please contact the Groundwater Information Desk at (303) 866-3587.



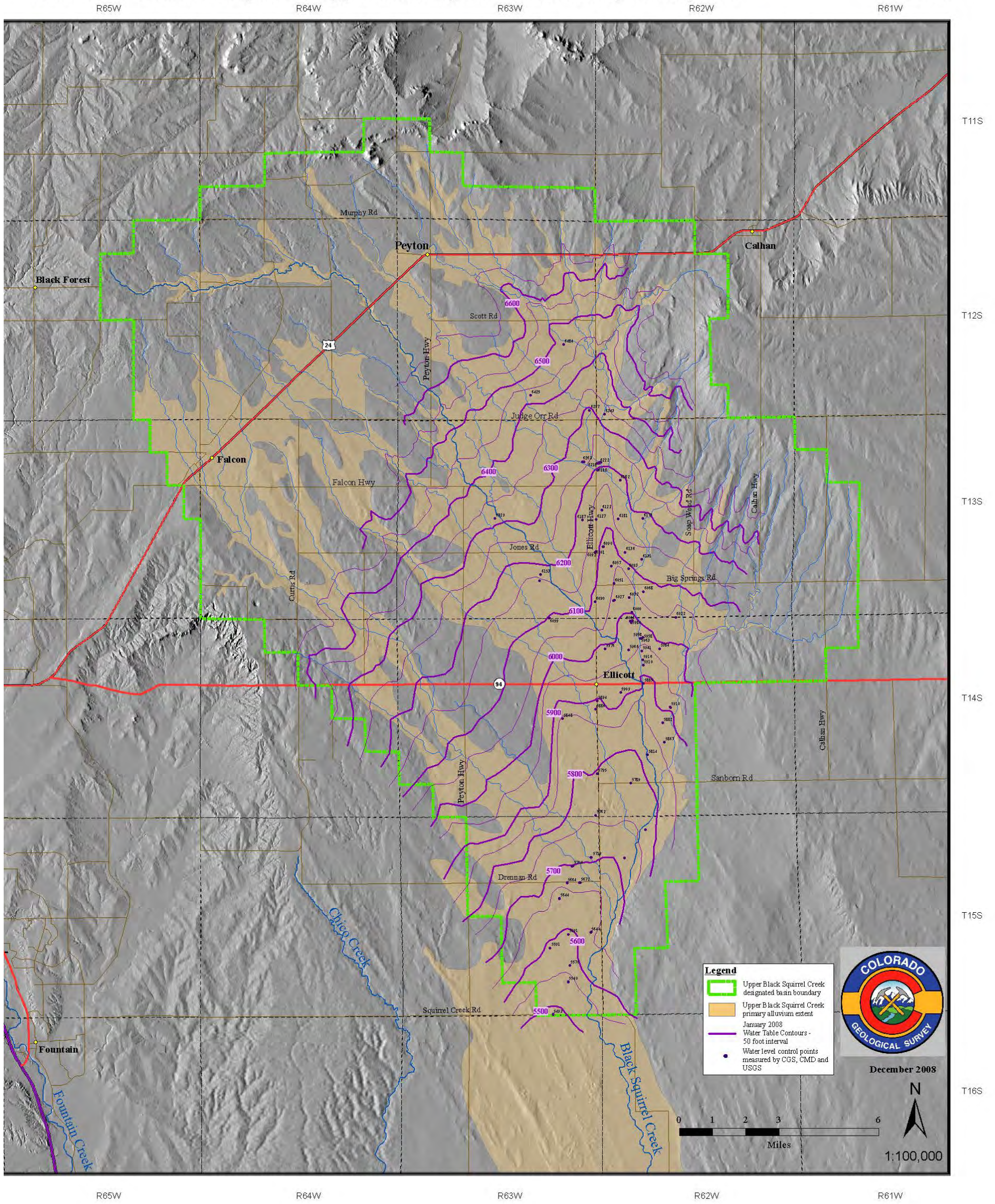
COLORADO
 Division of Water Resources
 Department of Natural Resources

State of Colorado -- Division of Water Resources
**Upper Black Squirrel Creek Designated Basin
 Monitoring Well Network**

Source: Topper, Ralf, 2008, Upper Black Squirrel Creek Basin Aquifer Recharge and Storage Evaluation: Colorado Geological Survey, prepared for El Paso County Water Authority.

Water Table Contour Map of the Upper Black Squirrel Creek Basin, January 2008

Plate 14



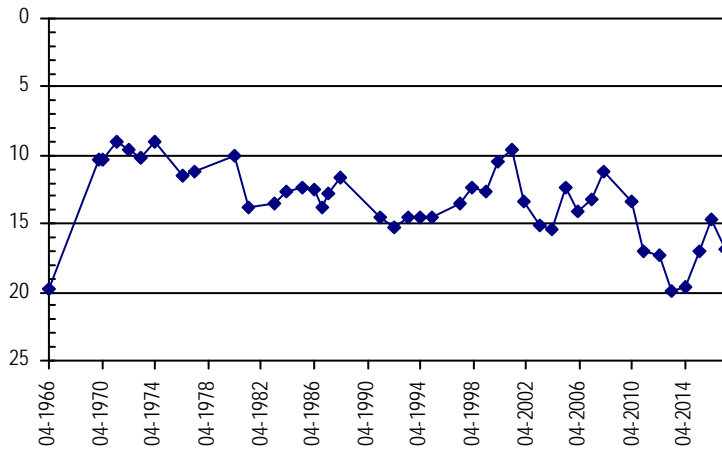
UPPER BLACK SQUIRREL

Well Name:	BS-02	<i>Owner:</i> DAVE SNELLSTROM	
<i>Permit #:</i>	13171 - RFP - R	<i>Location #:</i> SC01206231CD	<i>USGS Site ID:</i>
<i>Division:</i>	2	<i>Water District:</i> 10	<i>County:</i> EL PASO
<i>Location:</i>	Q160 Q40 Q10 Section	Twnshp Range PM	Distance from section lines:
	SW SE 31	12 S 62 W S	<i>From N/S line:</i> <i>From E/W line:</i>
<i>UTM Coordinates (NAD83):</i>	<i>Northing (UTM y):</i> 4312108.7	<i>Easting (UTM x):</i> 553588.5	<i>GPS</i>
<i>Latitude/Longitude (decimal degrees):</i>	38.956297	-104.381519	
<i>Surface Elevation (ft):</i>	6358	<i>Top Perforated Interval (ft):</i>	<i>Base of grout (ft):</i>
<i>Well depth (ft):</i>	51	<i>Bottom Perforated Interval (ft):</i>	Water Level Change
<i>Aquifer(s):</i>	QUATERNARY ALLUVIUM		1 year: -2.13
			5 year: 0.47
			10 year: -3.62

Measurements from last 10 years

Date	Depth to WL (ft)	Elev of WL (ft)	Change (ft)
3/7/2007	13.25	6344.75	0.88
2/21/2008	11.14	6346.86	2.11
1/1/2009			
2/17/2010	13.30	6344.70	
2/28/2011	17.02	6340.98	-3.72
4/12/2012	17.34	6340.66	-0.32
2/13/2013	19.98	6338.02	-2.64
4/9/2014	19.63	6338.37	0.35
4/1/2015	17.00	6341.00	2.63
2/25/2016	14.74	6343.26	2.26
3/8/2017	16.87	6341.13	-2.13

All Historic Measurements

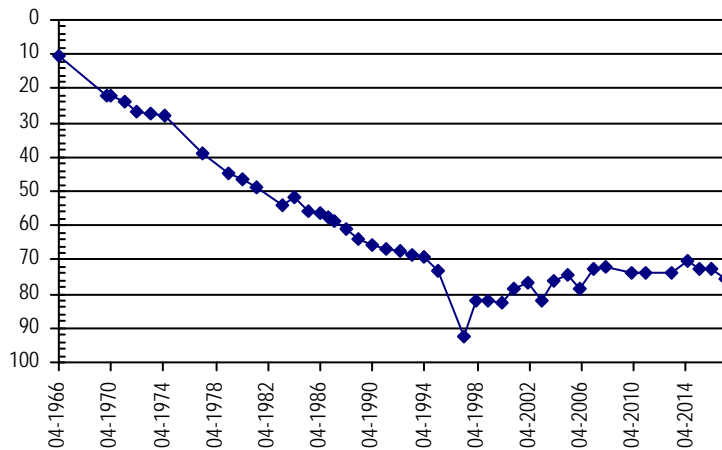


Well Name:	BS-04	<i>Owner:</i> DEAN GOSS	
<i>Permit #:</i>	6100 - F -	<i>Location #:</i> SC01306207DC	<i>USGS Site ID:</i>
<i>Division:</i>	2	<i>Water District:</i> 10	<i>County:</i> EL PASO
<i>Location:</i>	Q160 Q40 Q10 Section	Twnshp Range PM	Distance from section lines:
	SE SW 7	13 S 62 W S	<i>From N/S line:</i> <i>From E/W line:</i>
<i>UTM Coordinates (NAD83):</i>	<i>Northing (UTM y):</i> 4308902.7	<i>Easting (UTM x):</i> 554338.5	<i>GPS</i>
<i>Latitude/Longitude (decimal degrees):</i>	38.927362	-104.373118	
<i>Surface Elevation (ft):</i>	6257	<i>Top Perforated Interval (ft):</i>	<i>Base of grout (ft):</i>
<i>Well depth (ft):</i>	127	<i>Bottom Perforated Interval (ft):</i>	Water Level Change
<i>Aquifer(s):</i>	QUATERNARY ALLUVIUM		1 year: -2.69
			5 year:
			10 year: -2.59

Measurements from last 10 years

Date	Depth to WL (ft)	Elev of WL (ft)	Change (ft)
3/19/2007	72.91	6184.09	5.85
2/21/2008	72.05	6184.95	0.86
1/1/2009			
2/17/2010	73.64	6183.36	
2/28/2011	73.75	6183.25	-0.11
4/12/2012			
2/13/2013	73.83	6183.17	
4/9/2014	70.55	6186.45	3.28
4/1/2015	72.69	6184.31	-2.14
2/25/2016	72.81	6184.19	-0.12
3/8/2017	75.50	6181.50	-2.69

All Historic Measurements



UPPER BLACK SQUIRREL

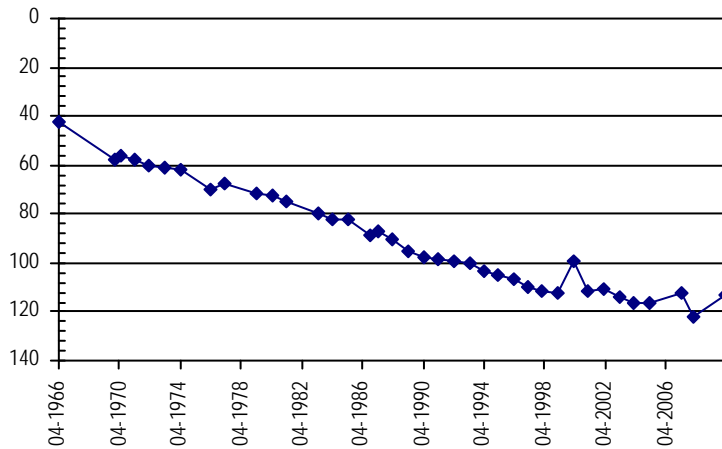
Well Name:	BS-06A	<i>Owner:</i>	DEAN GOSS
<i>Permit #:</i>	11091 - FP -	<i>Location #:</i>	SC01306218CB
<i>USGS Site ID:</i>			
<i>Division:</i>	2	<i>Water District:</i>	10
		<i>County:</i>	EL PASO
<i>Location:</i>	Q160 Q40 Q10 Section	Twnshp Range PM	Distance from section lines:
	SW NW 18	13 S 62 W S	<i>From N/S line:</i> <i>From E/W line:</i>
<i>UTM Coordinates (NAD83):</i>	<i>Northing (UTM y):</i>	4307440.7	<i>Easting (UTM x):</i> 553454.5 <i>GPS</i>
<i>Latitude/Longitude (decimal degrees):</i>	38.914242		-104.383430
<i>Surface Elevation (ft):</i>	6250	<i>Top Perforated Interval (ft):</i>	<i>Base of grout (ft):</i>
<i>Well depth (ft):</i>	187	<i>Bottom Perforated Interval (ft):</i>	
<i>Aquifer(s):</i>	QUATERNARY ALLUVIUM		

Water Level Change
1 year:
5 year:
10 year:

Measurements from last 10 years

Date	Depth to WL (ft)	Elev of WL (ft)	Change (ft)
3/19/2007	112.60	6137.40	
2/21/2008	122.02	6127.98	-9.42
1/1/2009			
2/17/2010	113.10	6136.90	
2/28/2011			
4/12/2012			
2/13/2013			

All Historic Measurements



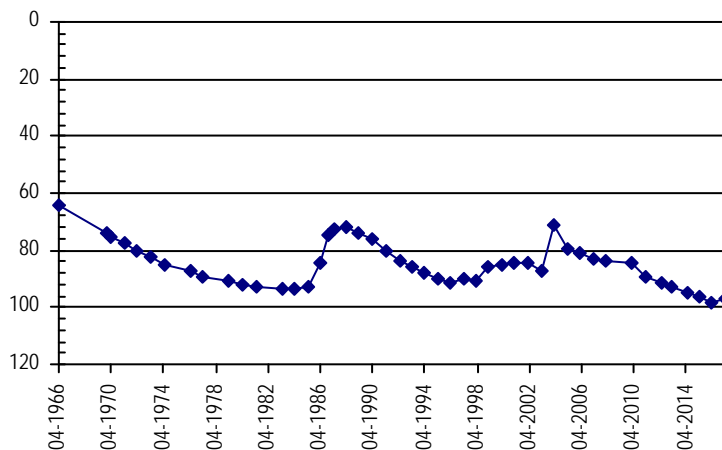
Well Name:	BS-07	<i>Owner:</i>	VERNON M JONES
<i>Permit #:</i>	17425 - F -	<i>Location #:</i>	SC01406206CD
<i>USGS Site ID:</i>			
<i>Division:</i>	2	<i>Water District:</i>	10
		<i>County:</i>	EL PASO
<i>Location:</i>	Q160 Q40 Q10 Section	Twnshp Range PM	Distance from section lines:
	SE SW 6	14 S 62 W S	<i>From N/S line:</i> <i>From E/W line:</i>
<i>UTM Coordinates (NAD83):</i>	<i>Northing (UTM y):</i>	4300725.7	<i>Easting (UTM x):</i> 553621.5 <i>GPS</i>
<i>Latitude/Longitude (decimal degrees):</i>	38.853723		-104.382028
<i>Surface Elevation (ft):</i>	6060	<i>Top Perforated Interval (ft):</i>	<i>Base of grout (ft):</i>
<i>Well depth (ft):</i>	110	<i>Bottom Perforated Interval (ft):</i>	
<i>Aquifer(s):</i>	QUATERNARY ALLUVIUM		

Water Level Change
1 year: 1.34
5 year: -6.08
10 year: -14.45

Measurements from last 10 years

Date	Depth to WL (ft)	Elev of WL (ft)	Change (ft)
3/19/2007	82.74	5977.26	-1.93
2/21/2008	83.98	5976.02	-1.24
1/1/2009			
2/17/2010	84.26	5975.74	
2/28/2011	89.59	5970.41	-5.33
4/12/2012	91.11	5968.89	-1.52
2/13/2013	92.92	5967.08	-1.81
4/9/2014	94.64	5965.36	-1.72
4/1/2015	96.07	5963.93	-1.43
2/25/2016	98.53	5961.47	-2.46
3/8/2017	97.19	5962.81	1.34

All Historic Measurements



UPPER BLACK SQUIRREL

Well Name: **BS-08** **Owner:** ELLICOTT FIRE PROTECTION DISTRICT
Permit #: 13673 - FP - **Location #:** SC01406218BC **USGS Site ID:**

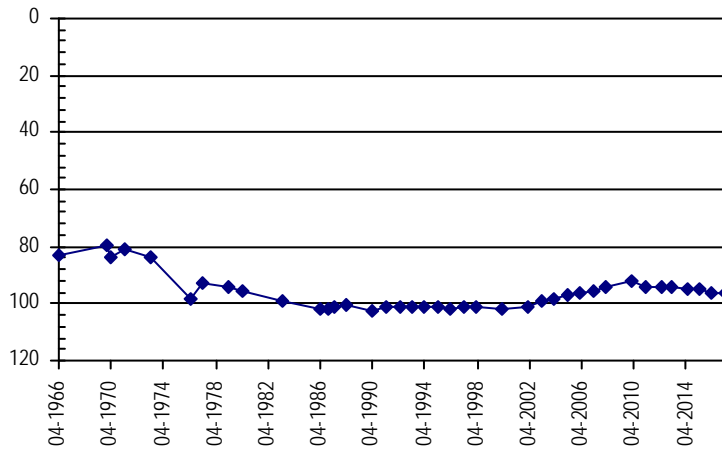
Division: 2 **Water District:** 10 **County:** EL PASO
Location: Q160 Q40 Q10 Section Twnshp Range PM Distance from section lines:
NW SW 18 14 S 62 W S **From N/S line:** **From E/W line:**
UTM Coordinates (NAD83): **Northing (UTM y):** 4298189.7 **Easting (UTM x):** 553238.5 *GPS*
Latitude/Longitude (decimal degrees): 38.830894 -104.386638

Surface Elevation (ft): 5985 **Top Perforated Interval (ft):** **Base of grout (ft):** **Water Level Change**
Well depth (ft): 134 **Bottom Perforated Interval (ft):** **1 year:** -0.44
Aquifer(s): QUATERNARY ALLUVIUM **5 year:** -2.73
10 year: -0.85

Measurements from last 10 years

Date	Depth to WL (ft)	Elev of WL (ft)	Change (ft)
3/7/2007	95.72	5889.28	0.67
2/21/2008	94.48	5890.52	1.24
1/1/2009			
2/17/2010	92.13	5892.87	
3/2/2011	94.04	5890.96	-1.91
4/13/2012	93.84	5891.16	0.20
2/13/2013	94.32	5890.68	-0.48
4/9/2014	95.10	5889.90	-0.78
4/1/2015	95.14	5889.86	-0.04
2/25/2016	96.13	5888.87	-0.99
3/8/2017	96.57	5888.43	-0.44

All Historic Measurements



Well Name: **BS-10** **Owner:** RON GIESBRECHT
Permit #: 20701 - FP - **Location #:** SC01406208BA **USGS Site ID:**

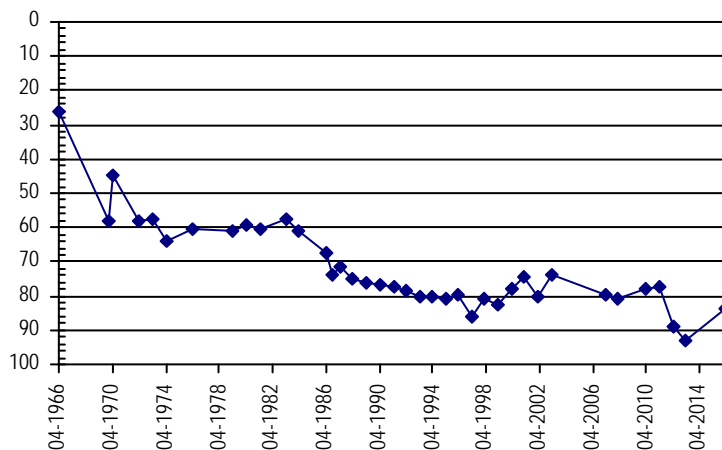
Division: 2 **Water District:** 10 **County:** EL PASO
Location: Q160 Q40 Q10 Section Twnshp Range PM Distance from section lines:
NE NW 8 14 S 62 W S **From N/S line:** **From E/W line:**
UTM Coordinates (NAD83): **Northing (UTM y):** 4300622.7 **Easting (UTM x):** 555391.5 *GPS*
Latitude/Longitude (decimal degrees): 38.852685 -104.361639

Surface Elevation (ft): 6030 **Top Perforated Interval (ft):** **Base of grout (ft):** **Water Level Change**
Well depth (ft): 136 **Bottom Perforated Interval (ft):** **1 year:**
Aquifer(s): QUATERNARY ALLUVIUM **5 year:**
10 year:

Measurements from last 10 years

Date	Depth to WL (ft)	Elev of WL (ft)	Change (ft)
3/7/2007	79.46	5950.54	
2/21/2008	80.71	5949.29	-1.25
1/1/2009			
2/17/2010	78.10	5951.90	
3/2/2011	77.48	5952.52	0.62
4/12/2012	88.87	5941.13	-11.39
2/13/2013	93.02	5936.98	-4.15
4/9/2014			
4/1/2015			
2/26/2016	83.74	5946.26	
3/8/2017			

All Historic Measurements



UPPER BLACK SQUIRREL

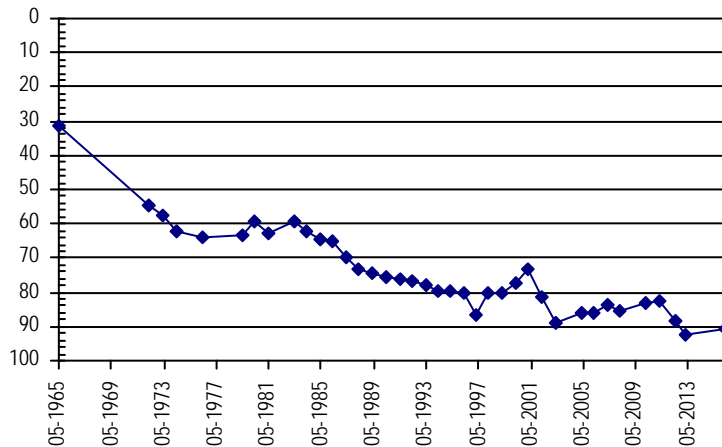
Well Name:	BS-10A	<i>Owner:</i> RON GIESBRECHT	
<i>Permit #:</i>	27608 - FP -	<i>Location #:</i> SC01406208BD1	<i>USGS Site ID:</i>
<i>Division:</i>	2	<i>Water District:</i> 10	<i>County:</i> EL PASO
<i>Location:</i>	Q160 Q40 Q10 Section NW SE 8	Twnshp Range PM 14 S 62 W S	<i>Distance from section lines:</i> <i>From N/S line:</i> <i>From E/W line:</i>
<i>UTM Coordinates (NAD83):</i>	<i>Northing (UTM y):</i> 4300171.7	<i>Easting (UTM x):</i> 555435.5	<i>GPS</i>
<i>Latitude/Longitude (decimal degrees):</i>	38.848618	-104.361168	
<i>Surface Elevation (ft):</i>	6000	<i>Top Perforated Interval (ft):</i>	<i>Base of grout (ft):</i>
<i>Well depth (ft):</i>	155	<i>Bottom Perforated Interval (ft):</i>	
<i>Aquifer(s):</i>	QUATERNARY ALLUVIUM		

Water Level Change
1 year:
5 year:
10 year:

Measurements from last 10 years

Date	Depth to WL (ft)	Elev of WL (ft)	Change (ft)
3/7/2007	83.66	5916.34	2.16
2/21/2008	85.73	5914.27	-2.07
1/1/2009			
2/17/2010	82.99	5917.01	
3/2/2011	82.30	5917.70	0.69
4/12/2012	88.33	5911.67	-6.03
2/13/2013	92.60	5907.40	-4.27
4/9/2014			
4/1/2015			
2/26/2016	90.60	5909.40	
3/8/2017			

All Historic Measurements



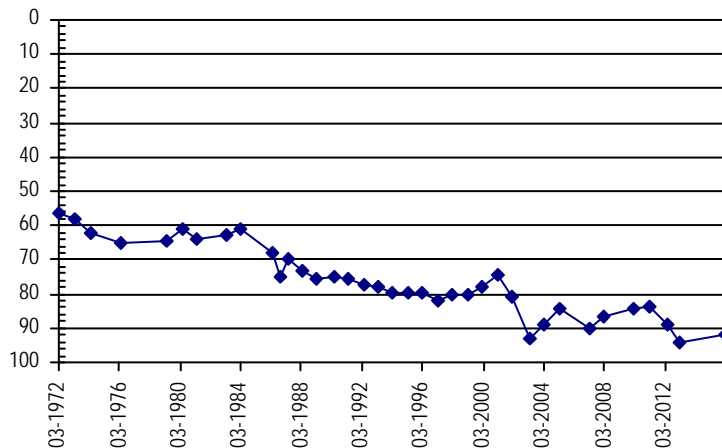
Well Name:	BS-10B	<i>Owner:</i> RON GIESBRECHT	
<i>Permit #:</i>	16010 - FP -	<i>Location #:</i> SC01406208BD2	<i>USGS Site ID:</i>
<i>Division:</i>	2	<i>Water District:</i> 10	<i>County:</i> EL PASO
<i>Location:</i>	Q160 Q40 Q10 Section NW SW 8	Twnshp Range PM 14 S 62 W S	<i>Distance from section lines:</i> <i>From N/S line:</i> <i>From E/W line:</i>
<i>UTM Coordinates (NAD83):</i>	<i>Northing (UTM y):</i> 4299925.7	<i>Easting (UTM x):</i> 555458.5	<i>GPS</i>
<i>Latitude/Longitude (decimal degrees):</i>	38.846400	-104.360923	
<i>Surface Elevation (ft):</i>	6000	<i>Top Perforated Interval (ft):</i>	<i>Base of grout (ft):</i>
<i>Well depth (ft):</i>	148	<i>Bottom Perforated Interval (ft):</i>	
<i>Aquifer(s):</i>	QUATERNARY ALLUVIUM		

Water Level Change
1 year:
5 year:
10 year:

Measurements from last 10 years

Date	Depth to WL (ft)	Elev of WL (ft)	Change (ft)
3/7/2007	90.32	5909.68	
2/21/2008	86.90	5913.10	3.42
1/1/2009			
2/17/2010	84.29	5915.71	
3/2/2011	83.92	5916.08	0.37
4/12/2012	88.68	5911.32	-4.76
2/13/2013	94.01	5905.99	-5.33
4/9/2014			
4/1/2015			
2/26/2016	92.05	5907.95	
3/8/2017			

All Historic Measurements



UPPER BLACK SQUIRREL

Well Name: **BS-10R**

Owner:

Permit #: - -

Location #: SC01406208CAD

USGS Site ID:

Division: 2 Water District: 10 County: EL PASO

Location: Q160 Q40 Q10 Section Twntshp Range PM Distance from section lines:
 SW NE 8 14 S 62 W S From N/S line: From E/W line:

UTM Coordinates (NAD83): Northing (UTM y): 4301224.7 Easting (UTM x): 555360.5 GPS

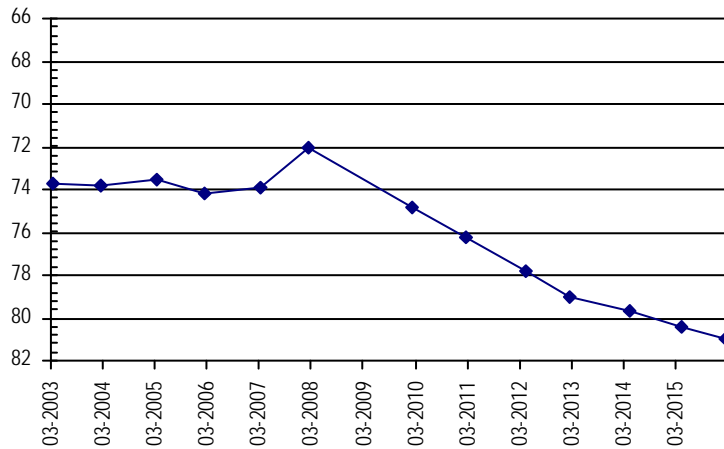
Latitude/Longitude (decimal degrees): 38.858112 -104.361948

Surface Elevation (ft): 6035 Top Perforated Interval (ft): Base of grout (ft): **Water Level Change**
 Well depth (ft): Bottom Perforated Interval (ft): **1 year:**
 Aquifer(s): QUATERNARY ALLUVIUM **5 year:**
10 year:

Measurements from last 10 years

Date	Depth to WL (ft)	Elev of WL (ft)	Change (ft)
3/7/2007	73.87	5961.13	0.31
2/21/2008	72.05	5962.95	1.82
1/1/2009			
2/17/2010	74.85	5960.15	
2/28/2011	76.26	5958.74	-1.41
4/12/2012	77.79	5957.21	-1.53
2/13/2013	78.99	5956.01	-1.20
4/9/2014	79.64	5955.36	-0.65
4/1/2015	80.39	5954.61	-0.75
2/26/2016	80.98	5954.02	-0.59
3/8/2017			

All Historic Measurements



Well Name: **BS-12**

Owner: LINDA & JOHN GLADDEN

Permit #: 2449 - FP -

Location #: SC01406216CA

USGS Site ID:

Division: 2 Water District: 10 County: EL PASO

Location: Q160 Q40 Q10 Section Twntshp Range PM Distance from section lines:
 SW NE 16 14 S 62 W S From N/S line: From E/W line:

UTM Coordinates (NAD83): Northing (UTM y): 4297895.6 Easting (UTM x): 556766.5 GPS

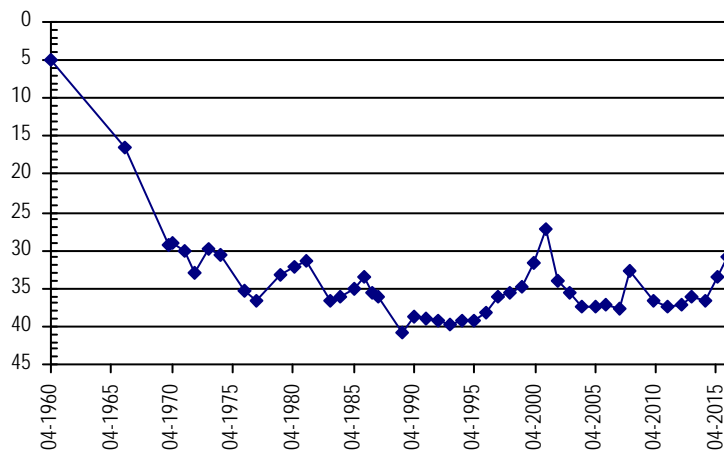
Latitude/Longitude (decimal degrees): 38.828024 -104.346019

Surface Elevation (ft): 5940 Top Perforated Interval (ft): Base of grout (ft): **Water Level Change**
 Well depth (ft): 50 Bottom Perforated Interval (ft): **1 year:**
 Aquifer(s): QUATERNARY ALLUVIUM **5 year:**
10 year:

Measurements from last 10 years

Date	Depth to WL (ft)	Elev of WL (ft)	Change (ft)
3/7/2007	37.78	5902.22	-0.51
2/21/2008	32.81	5907.19	4.97
1/1/2009			
2/17/2010	36.62	5903.38	
3/2/2011	37.49	5902.51	-0.87
4/12/2012	37.23	5902.77	0.26
2/19/2013	36.02	5903.98	1.21
4/9/2014	36.71	5903.29	-0.69
4/1/2015	33.60	5906.40	3.11
2/25/2016	30.86	5909.14	2.74
3/8/2017			

All Historic Measurements



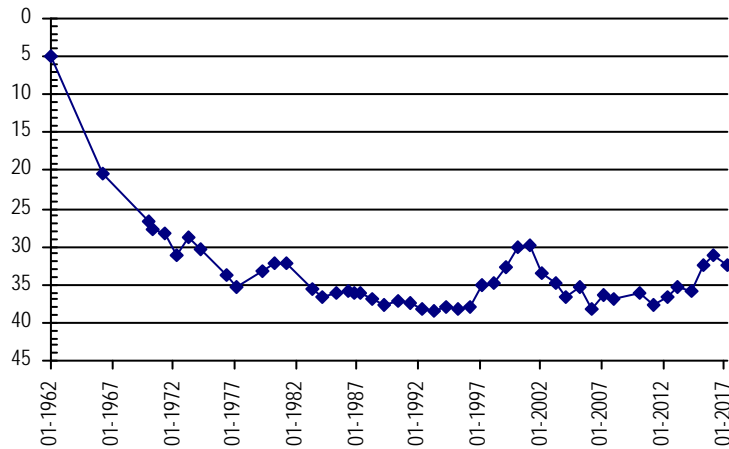
UPPER BLACK SQUIRREL

Well Name:	BS-13	<i>Owner:</i>	RAYMOND LEWIS	
<i>Permit #:</i>	3485 - FP -	<i>Location #:</i>	SC01406221BA	
<i>Division:</i>	2	<i>Water District:</i>	10	<i>County:</i> EL PASO
<i>Location:</i>	Q160 Q40 Q10 Section	Twnshp	Range	PM Distance from section lines:
	NW NE 21	14 S	62 W S	<i>From N/S line:</i> <i>From E/W line:</i>
<i>UTM Coordinates (NAD83):</i>	<i>Northing (UTM y):</i>	4297459.6	<i>Easting (UTM x):</i>	556693.5 <i>GPS</i>
<i>Latitude/Longitude (decimal degrees):</i>	38.824100		-104.346896	
<i>Surface Elevation (ft):</i>	5920	<i>Top Perforated Interval (ft):</i>	<i>Base of grout (ft):</i>	Water Level Change
<i>Well depth (ft):</i>	52	<i>Bottom Perforated Interval (ft):</i>		1 year: -1.54
<i>Aquifer(s):</i>	QUATERNARY ALLUVIUM			5 year: 4.11
				10 year: 3.75

Measurements from last 10 years

Date	Depth to WL (ft)	Elev of WL (ft)	Change (ft)
3/7/2007	36.31	5883.69	2.00
12/11/2007	36.80	5883.20	-0.49
1/1/2009			
2/17/2010	36.08	5883.92	
3/2/2011	37.56	5882.44	-1.48
4/12/2012	36.67	5883.33	0.89
2/19/2013	35.27	5884.73	1.40
4/9/2014	35.88	5884.12	-0.61
4/1/2015	32.43	5887.57	3.45
2/26/2016	31.02	5888.98	1.41
3/8/2017	32.56	5887.44	-1.54

All Historic Measurements

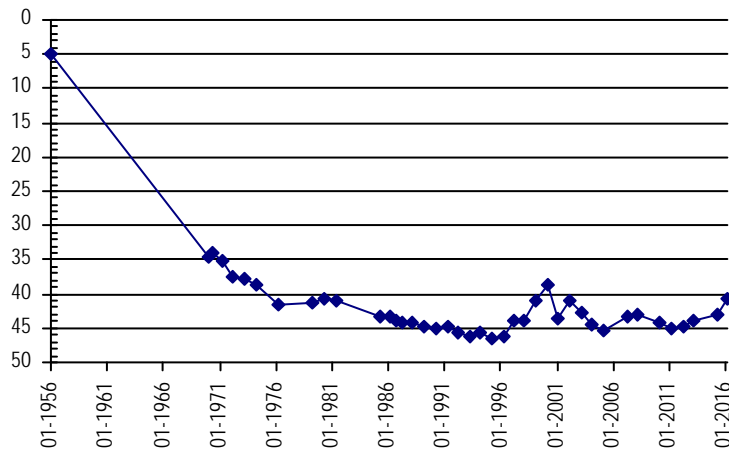


Well Name:	BS-14	<i>Owner:</i>		
<i>Permit #:</i>	-	<i>Location #:</i>	SC01406221BB	
<i>Division:</i>	2	<i>Water District:</i>	10	<i>County:</i> EL PASO
<i>Location:</i>	Q160 Q40 Q10 Section	Twnshp	Range	PM Distance from section lines:
	NW NW 21	14 S	62 W S	<i>From N/S line:</i> <i>From E/W line:</i>
<i>UTM Coordinates (NAD83):</i>	<i>Northing (UTM y):</i>	4297140.6	<i>Easting (UTM x):</i>	556406.5 <i>GPS</i>
<i>Latitude/Longitude (decimal degrees):</i>	38.821244		-104.350228	
<i>Surface Elevation (ft):</i>	5925	<i>Top Perforated Interval (ft):</i>	<i>Base of grout (ft):</i>	Water Level Change
<i>Well depth (ft):</i>	61	<i>Bottom Perforated Interval (ft):</i>		1 year:
<i>Aquifer(s):</i>	QUATERNARY ALLUVIUM			5 year:
				10 year:

Measurements from last 10 years

Date	Depth to WL (ft)	Elev of WL (ft)	Change (ft)
3/7/2007	43.30	5881.70	
2/21/2008	43.00	5882.00	0.30
1/1/2009			
2/17/2010	44.33	5880.67	
3/2/2011	45.02	5879.98	-0.69
4/13/2012	44.80	5880.20	0.22
2/19/2013	43.87	5881.13	0.93
4/10/2014			
4/1/2015	42.98	5882.02	
2/26/2016	40.70	5884.30	2.28
3/8/2017			

All Historic Measurements



UPPER BLACK SQUIRREL

Well Name: **BS-15A**

Owner:

Permit #: 11799 - FP - Location #: SC01306325AA USGS Site ID:

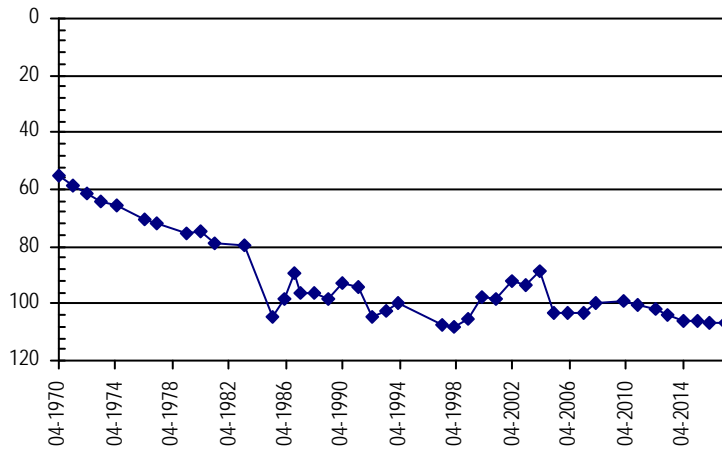
Division: 2 Water District: 10 County: EL PASO
 Location: Q160 Q40 Q10 Section Twnshp Range PM Distance from section lines:
 NE NE 25 13 S 63 W S From N/S line: From E/W line:
 UTM Coordinates (NAD83): Northing (UTM y): 4305393.7 Easting (UTM x): 553138.5 GPS
 Latitude/Longitude (decimal degrees): 38.895816 -104.387233

Surface Elevation (ft): 6200 Top Perforated Interval (ft): Base of grout (ft): **Water Level Change**
 Well depth (ft): 120 Bottom Perforated Interval (ft): **1 year:** -0.28
 Aquifer(s): QUATERNARY ALLUVIUM **5 year:** -5.19
10 year: -3.79

Measurements from last 10 years

Date	Depth to WL (ft)	Elev of WL (ft)	Change (ft)
3/7/2007	103.10	6096.90	0.01
2/21/2008	99.52	6100.48	3.58
1/1/2009			
2/17/2010	99.03	6100.97	
2/28/2011	100.54	6099.46	-1.51
4/12/2012	101.70	6098.30	-1.16
2/13/2013	104.20	6095.80	-2.50
4/9/2014	106.00	6094.00	-1.80
4/1/2015	105.76	6094.24	0.24
2/25/2016	106.61	6093.39	-0.85
3/8/2017	106.89	6093.11	-0.28

All Historic Measurements



Well Name: **BS-15B**

Owner:

Permit #: 20528 - FP - Location #: SC01406232BB USGS Site ID:

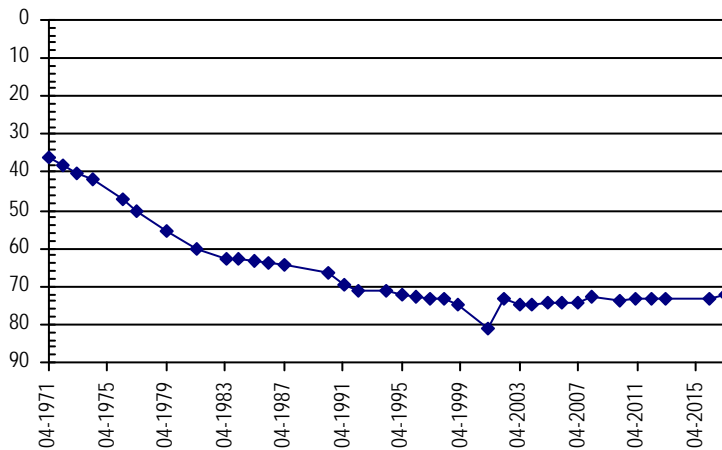
Division: 2 Water District: 10 County: EL PASO
 Location: Q160 Q40 Q10 Section Twnshp Range PM Distance from section lines:
 NW NW 32 14 S 62 W S From N/S line: From E/W line:
 UTM Coordinates (NAD83): Northing (UTM y): 4294218.7 Easting (UTM x): 554849.5 GPS
 Latitude/Longitude (decimal degrees): 38.795012 -104.368395

Surface Elevation (ft): 5860 Top Perforated Interval (ft): Base of grout (ft): **Water Level Change**
 Well depth (ft): 120 Bottom Perforated Interval (ft): **1 year:** 1.15
 Aquifer(s): QUATERNARY ALLUVIUM **5 year:** 0.95
10 year: 2.26

Measurements from last 10 years

Date	Depth to WL (ft)	Elev of WL (ft)	Change (ft)
3/7/2007	74.34	5785.66	-0.29
2/21/2008	72.49	5787.51	1.85
1/1/2009			
2/17/2010	73.57	5786.43	
3/2/2011	73.20	5786.80	0.37
4/13/2012	73.03	5786.97	0.17
2/19/2013	73.39	5786.61	-0.36
4/10/2014			
4/1/2015			
2/26/2016	73.23	5786.77	
3/8/2017	72.08	5787.92	1.15

All Historic Measurements



UPPER BLACK SQUIRREL

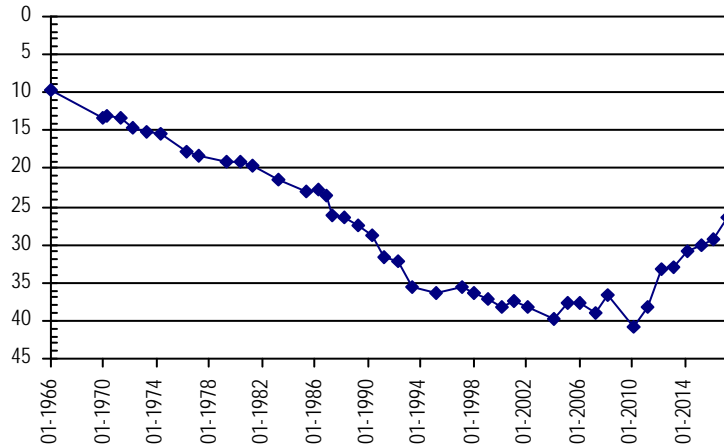
Well Name:	BS-16	<i>Owner:</i> JERRY FARMER	
<i>Permit #:</i>	2451 - FP -	<i>Location #:</i> SC01506324DA1	<i>USGS Site ID:</i>
<i>Division:</i>	2	<i>Water District:</i> 10	<i>County:</i> EL PASO
<i>Location:</i>	Q160 Q40 Q10 Section	Twnshp Range PM	Distance from section lines:
	NE SE 24	15 S 63 W S	<i>From N/S line:</i> <i>From E/W line:</i>
<i>UTM Coordinates (NAD83):</i>	<i>Northing (UTM y):</i> 4287005.7	<i>Easting (UTM x):</i> 553039.4	<i>GPS</i>
<i>Latitude/Longitude (decimal degrees):</i>	38.730125	-104.389791	
<i>Surface Elevation (ft):</i>	5690	<i>Top Perforated Interval (ft):</i>	<i>Base of grout (ft):</i>
<i>Well depth (ft):</i>	67	<i>Bottom Perforated Interval (ft):</i>	
<i>Aquifer(s):</i>	QUATERNARY ALLUVIUM		

Water Level Change
1 year: 2.98
5 year: 6.90
10 year: 12.51

Measurements from last 10 years

Date	Depth to WL (ft)	Elev of WL (ft)	Change (ft)
3/7/2007	38.87	5651.13	-1.07
2/21/2008	36.53	5653.47	2.34
1/1/2009			
2/17/2010	40.84	5649.16	
3/2/2011	38.26	5651.74	2.58
4/13/2012	33.26	5656.74	5.00
2/19/2013	32.87	5657.13	0.39
4/10/2014	31.00	5659.00	1.87
4/1/2015	30.09	5659.91	0.91
2/25/2016	29.34	5660.66	0.75
3/8/2017	26.36	5663.64	2.98

All Historic Measurements



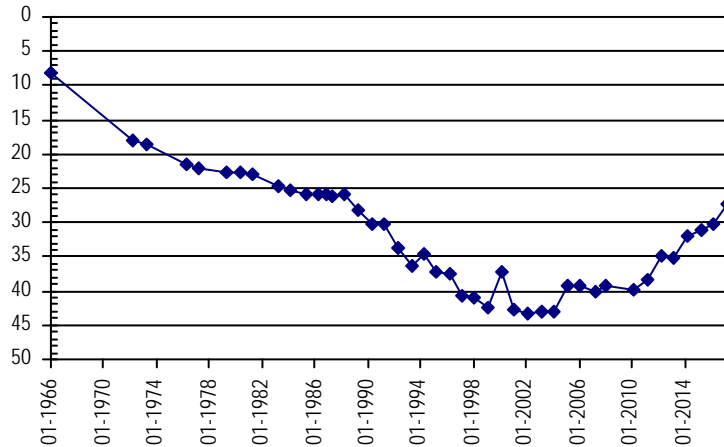
Well Name:	BS-17	<i>Owner:</i> DANIEL FARMER	
<i>Permit #:</i>	6494 - FP -	<i>Location #:</i> SC01506324DA2	<i>USGS Site ID:</i>
<i>Division:</i>	2	<i>Water District:</i> 10	<i>County:</i> EL PASO
<i>Location:</i>	Q160 Q40 Q10 Section	Twnshp Range PM	Distance from section lines:
	SE NE 24	15 S 63 W S	<i>From N/S line:</i> <i>From E/W line:</i>
<i>UTM Coordinates (NAD83):</i>	<i>Northing (UTM y):</i> 4286995.0	<i>Easting (UTM x):</i> 552948.0	<i>GPS</i>
<i>Latitude/Longitude (decimal degrees):</i>	38.730034	-104.390844	
<i>Surface Elevation (ft):</i>	5680	<i>Top Perforated Interval (ft):</i>	<i>Base of grout (ft):</i>
<i>Well depth (ft):</i>	31	<i>Bottom Perforated Interval (ft):</i>	
<i>Aquifer(s):</i>	QUATERNARY ALLUVIUM		

Water Level Change
1 year: 2.98
5 year: 7.54
10 year: 12.72

Measurements from last 10 years

Date	Depth to WL (ft)	Elev of WL (ft)	Change (ft)
3/7/2007	40.04	5639.96	-0.67
12/11/2007	39.10	5640.90	0.94
1/1/2009			
2/17/2010	39.95	5640.05	
3/2/2011	38.23	5641.77	1.72
4/13/2012	34.86	5645.14	3.37
2/19/2013	35.30	5644.70	-0.44
4/10/2014	32.01	5647.99	3.29
4/1/2015	31.16	5648.84	0.85
2/25/2016	30.30	5649.70	0.86
3/8/2017	27.32	5652.68	2.98

All Historic Measurements



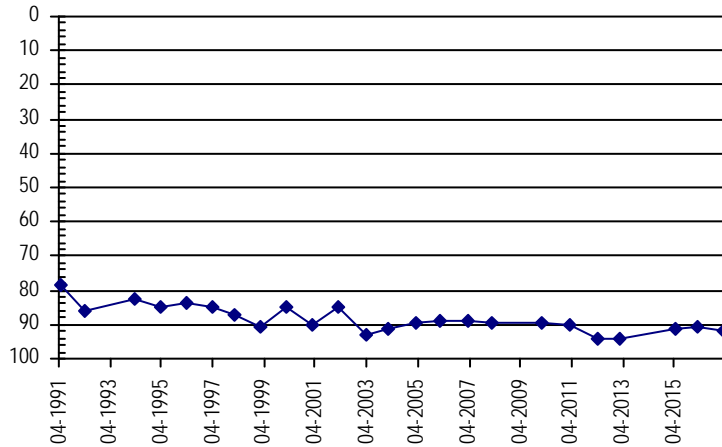
UPPER BLACK SQUIRREL

Well Name:	BS-18			Owner:	BILL KING		
Permit #:	- -			Location #:	SC01406217AB		
Division:	2			Water District:	10		
Location:	Q160 Q40 Q10 Section			County:	EL PASO		
	NE NW 17 14 S 62 W S			Distance from section lines:			
				From N/S line:	From E/W line:		
UTM Coordinates (NAD83):	Northing (UTM y): 4299033.7			Easting (UTM x): 555477.5 <i>GPS</i>			
Latitude/Longitude (decimal degrees):	38.838361			-104.360776			
Surface Elevation (ft):	5950			Top Perforated Interval (ft):	Base of grout (ft):		
Well depth (ft):	70			Water Level Change			
Aquifer(s):	QUATERNARY ALLUVIUM			1 year: -1.19			
				5 year: 2.33			
				10 year: -2.96			

Measurements from last 10 years

Date	Depth to WL (ft)	Elev of WL (ft)	Change (ft)
3/7/2007	88.96	5861.04	-0.14
2/21/2008	89.28	5860.72	-0.32
1/1/2009			
2/17/2010	89.40	5860.60	
3/2/2011	90.06	5859.94	-0.66
4/12/2012	94.25	5855.75	-4.19
2/13/2013	94.45	5855.55	-0.20
4/9/2014			
4/1/2015	91.51	5858.49	
2/26/2016	90.73	5859.27	0.78
3/8/2017	91.92	5858.08	-1.19

All Historic Measurements

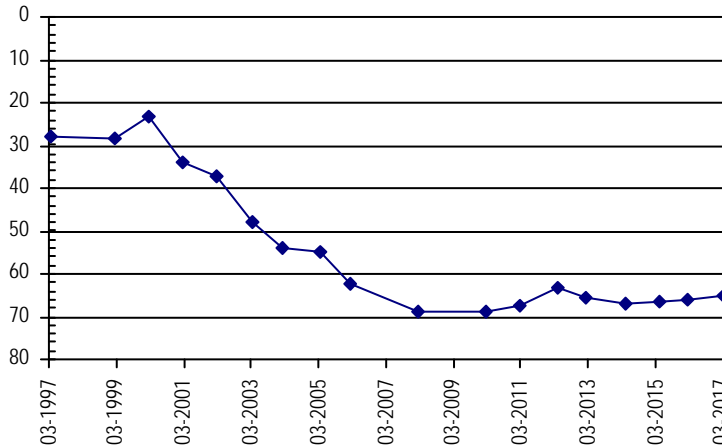


Well Name:	BS-19			Owner:	DEAN GOSS		
Permit #:	27567 - F -			Location #:	SC01306326CA		
Division:	2			Water District:	10		
Location:	Q160 Q40 Q10 Section			County:	EL PASO		
	SW NE 26 13 S 63 W S			Distance from section lines:			
				From N/S line:	From E/W line:		
UTM Coordinates (NAD83):	Northing (UTM y): 4304334.8			Easting (UTM x): 550486.5 <i>GPS</i>			
Latitude/Longitude (decimal degrees):	38.886430			-104.417891			
Surface Elevation (ft):	6220			Top Perforated Interval (ft):	Base of grout (ft):		
Well depth (ft):	136			Water Level Change			
Aquifer(s):	QUATERNARY ALLUVIUM			1 year: 1.21			
				5 year: -1.79			
				10 year:			

Measurements from last 10 years

Date	Depth to WL (ft)	Elev of WL (ft)	Change (ft)
3/19/2007			
2/21/2008	68.71	6151.29	
1/1/2009			
2/17/2010	68.98	6151.02	
2/28/2011	67.31	6152.69	1.67
4/12/2012	63.15	6156.85	4.16
2/13/2013	65.66	6154.34	-2.51
4/9/2014	67.06	6152.94	-1.40
4/1/2015	66.45	6153.55	0.61
2/25/2016	66.15	6153.85	0.30
3/8/2017	64.94	6155.06	1.21

All Historic Measurements



UPPER BLACK SQUIRREL

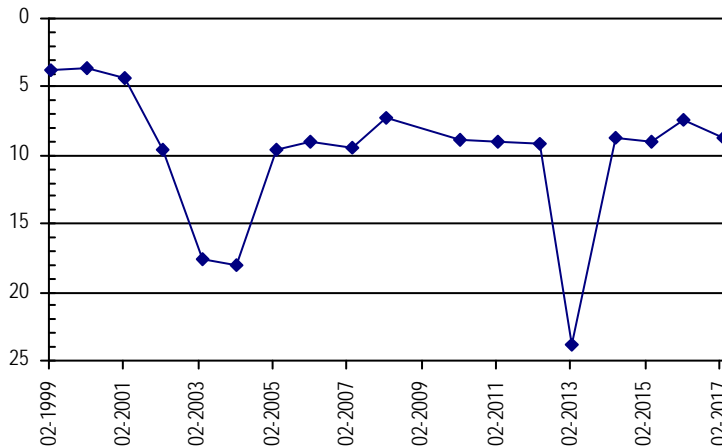
Well Name:	BS-22A	<i>Owner:</i>	E N CASTANIEN
<i>Permit #:</i>	40767 - -	<i>Location #:</i>	SC01206324CC
<i>USGS Site ID:</i>			
<i>Division:</i>	2	<i>Water District:</i>	10
		<i>County:</i>	EL PASO
<i>Location:</i>	Q160 Q40 Q10 Section	Twnshp Range PM	Distance from section lines:
	SW SW 24 12 S 63 W S		<i>From N/S line:</i> <i>From E/W line:</i>
<i>UTM Coordinates (NAD83):</i>	<i>Northing (UTM y):</i>	4315474.8	<i>Easting (UTM x):</i> 551619.5 <i>GPS</i>
<i>Latitude/Longitude (decimal degrees):</i>		38.986747	-104.403989
<i>Surface Elevation (ft):</i>	6491	<i>Top Perforated Interval (ft):</i>	<i>Base of grout (ft):</i>
<i>Well depth (ft):</i>	110	<i>Bottom Perforated Interval (ft):</i>	
<i>Aquifer(s):</i>	QUATERNARY ALLUVIUM		

Water Level Change
1 year: -1.23
5 year: 0.43
10 year: 0.79

Measurements from last 10 years

Date	Depth to WL (ft)	Elev of WL (ft)	Change (ft)
3/7/2007	9.46	6481.54	-0.51
2/21/2008	7.33	6483.67	2.13
1/1/2009			
2/17/2010	8.89	6482.11	
2/28/2011	8.98	6482.02	-0.09
4/12/2012	9.10	6481.90	-0.12
2/13/2013	23.78	6467.22	-14.68
4/9/2014	8.75	6482.25	15.03
4/1/2015	9.04	6481.96	-0.29
2/25/2016	7.44	6483.56	1.60
3/8/2017	8.67	6482.33	-1.23

All Historic Measurements



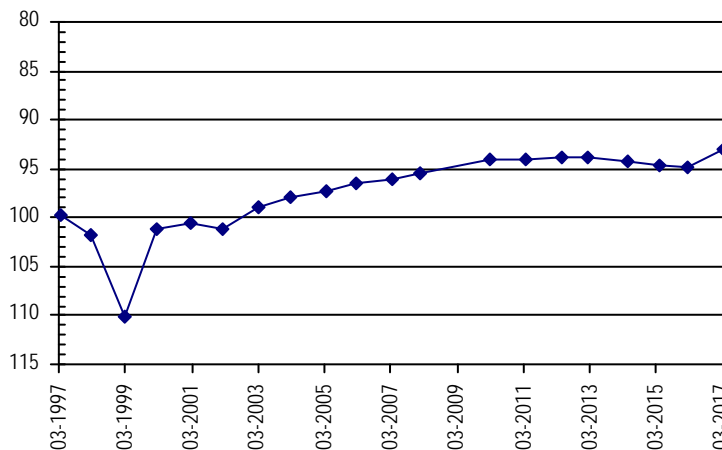
Well Name:	BS-23	<i>Owner:</i>	E N CASTANIEN
<i>Permit #:</i>	16516 - -	<i>Location #:</i>	SC01406324AA
<i>USGS Site ID:</i>			
<i>Division:</i>	2	<i>Water District:</i>	10
		<i>County:</i>	EL PASO
<i>Location:</i>	Q160 Q40 Q10 Section	Twnshp Range PM	Distance from section lines:
	NE NE 32 14 S 63 W S		<i>From N/S line:</i> <i>From E/W line:</i>
<i>UTM Coordinates (NAD83):</i>	<i>Northing (UTM y):</i>	4297546.7	<i>Easting (UTM x):</i> 553173.5 <i>GPS</i>
<i>Latitude/Longitude (decimal degrees):</i>		38.825104	-104.387437
<i>Surface Elevation (ft):</i>	5981	<i>Top Perforated Interval (ft):</i>	<i>Base of grout (ft):</i>
<i>Well depth (ft):</i>	110	<i>Bottom Perforated Interval (ft):</i>	
<i>Aquifer(s):</i>	QUATERNARY ALLUVIUM		

Water Level Change
1 year: 1.78
5 year: 0.70
10 year: 3.05

Measurements from last 10 years

Date	Depth to WL (ft)	Elev of WL (ft)	Change (ft)
3/7/2007	96.13	5884.87	0.34
1/22/2008	95.40	5885.60	0.73
1/1/2009			
2/17/2010	94.09	5886.91	
3/2/2011	94.03	5886.97	0.06
4/13/2012	93.78	5887.22	0.25
2/13/2013	93.83	5887.17	-0.05
4/9/2014	94.27	5886.73	-0.44
4/1/2015	94.70	5886.30	-0.43
2/25/2016	94.86	5886.14	-0.16
3/8/2017	93.08	5887.92	1.78

All Historic Measurements



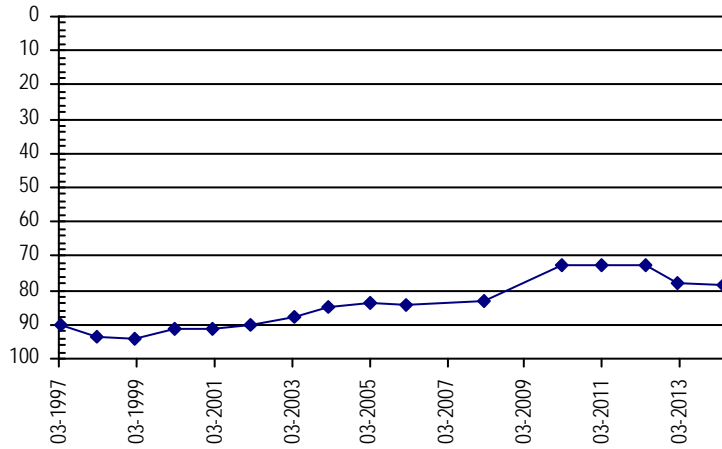
UPPER BLACK SQUIRREL

Well Name: **BS-25** **Owner:** DEAN GOSS
Permit #: 15389 - FP - **Location #:** SC01306207CB **USGS Site ID:**
Division: 2 **Water District:** 10 **County:** EL PASO
Location: Q160 Q40 Q10 Section Twnshp Range PM Distance from section lines:
SW NW 7 13 S 62 W S **From N/S line:** **From E/W line:**
UTM Coordinates (NAD83): *Northing (UTM y):* 4309380.7 *Easting (UTM x):* 553250.5 *GPS*
Latitude/Longitude (decimal degrees): 38.931736 -104.385632
Surface Elevation (ft): 6283 *Top Perforated Interval (ft):* **Base of grout (ft):** **Water Level Change**
Well depth (ft): 160 *Bottom Perforated Interval (ft):* **1 year:**
Aquifer(s): QUATERNARY ALLUVIUM **5 year:**
10 year:

Measurements from last 10 years

Date	Depth to WL (ft)	Elev of WL (ft)	Change (ft)
3/19/2007			
2/21/2008	82.87	6200.13	
1/1/2009			
2/17/2010	72.44	6210.56	
2/28/2011	72.87	6210.13	-0.43
4/12/2012	72.92	6210.08	-0.05
2/13/2013	77.98	6205.02	-5.06
4/9/2014	78.68	6204.32	-0.70

All Historic Measurements

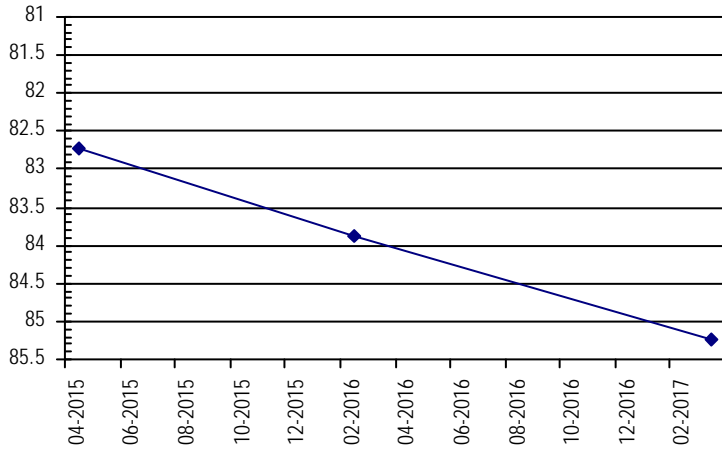


Well Name: **BS-25A** **Owner:**
Permit #: - - **Location #:** SC01306207CB **USGS Site ID:**
Division: 2 **Water District:** 10 **County:** EL PASO
Location: Q160 Q40 Q10 Section Twnshp Range PM Distance from section lines:
SW NW 7 13 S 62 W S **From N/S line:** 2385 S **From E/W line:** 270 W
UTM Coordinates (NAD83): *Northing (UTM y):* 4309341.0 *Easting (UTM x):* 553245.0 *GPS*
Latitude/Longitude (decimal degrees): 38.931379 -104.385699
Surface Elevation (ft): 6286 *Top Perforated Interval (ft):* **Base of grout (ft):** **Water Level Change**
Well depth (ft): *Bottom Perforated Interval (ft):* **1 year:** -1.36
Aquifer(s): QUATERNARY ALLUVIUM **5 year:**
10 year:

Measurements from last 10 years

Date	Depth to WL (ft)	Elev of WL (ft)	Change (ft)
4/1/2015	82.72	6203.28	
2/25/2016	83.88	6202.12	-1.16
3/8/2017	85.24	6200.76	-1.36

All Historic Measurements



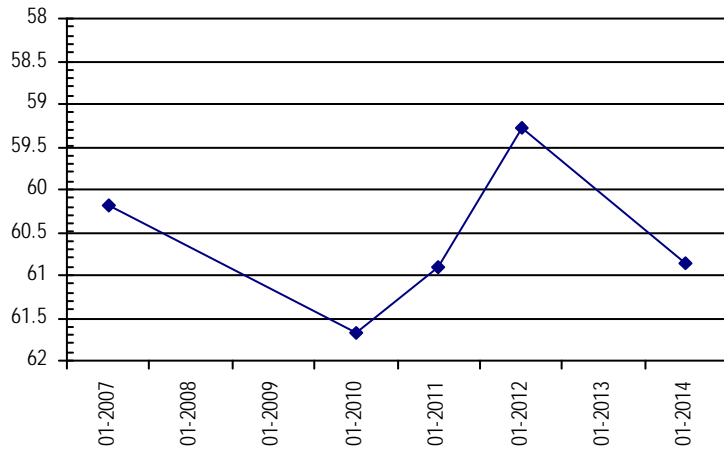
UPPER BLACK SQUIRREL

Well Name: **BS-27** **Owner:** DEAN GOSS
Permit #: 27564 - FP - R **Location #:** SC01306326CD **USGS Site ID:**
Division: 2 **Water District:** 10 **County:** EL PASO
Location: Q160 Q40 Q10 Section Twnshp Range PM Distance from section lines:
 SW SE 26 13 S 63 W S **From N/S line:** **From E/W line:**
UTM Coordinates (NAD83): Northing (UTM y): 4304024.0 Easting (UTM x): 550427.0 *GPS*
Latitude/Longitude (decimal degrees): 38.883633 -104.418600
Surface Elevation (ft): 6218 **Top Perforated Interval (ft):** **Base of grout (ft):** **Water Level Change**
Well depth (ft): **Bottom Perforated Interval (ft):** **1 year:**
Aquifer(s): QUATERNARY ALLUVIUM **5 year:**
10 year:

Measurements from last 10 years

Date	Depth to WL (ft)	Elev of WL (ft)	Change (ft)
3/19/2007	60.18	6157.82	
1/1/2009			
2/17/2010	61.67	6156.33	
2/28/2011	60.90	6157.10	0.77
4/12/2012	59.29	6158.71	1.61
2/13/2013			
4/9/2014	60.85	6157.15	

All Historic Measurements

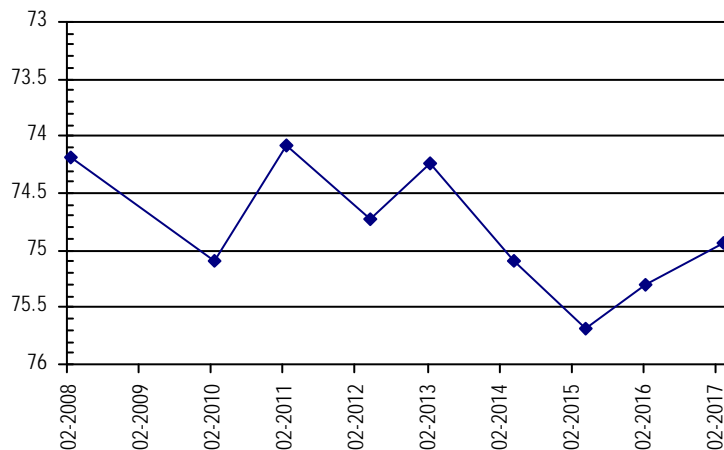


Well Name: **BS-28** **Owner:** ELDON BONTREGER
Permit #: 13962 - F - **Location #:** SC01206335BB **USGS Site ID:**
Division: 2 **Water District:** 10 **County:** EL PASO
Location: Q160 Q40 Q10 Section Twnshp Range PM Distance from section lines:
 NW NW 35 12 S 63 W S **From N/S line:** **From E/W line:**
UTM Coordinates (NAD83): Northing (UTM y): 4313012.0 Easting (UTM x): 550007.0 *GPS*
Latitude/Longitude (decimal degrees): 38.964648 -104.422786
Surface Elevation (ft): 6492 **Top Perforated Interval (ft):** 90 **Base of grout (ft):** **Water Level Change**
Well depth (ft): 170 **Bottom Perforated Interval (ft):** 170 **1 year:** 0.36
Aquifer(s): QUATERNARY ALLUVIUM **5 year:** -0.22
10 year:

Measurements from last 10 years

Date	Depth to WL (ft)	Elev of WL (ft)	Change (ft)
2/21/2008	74.19	6417.81	
1/1/2009			
2/17/2010	75.09	6416.91	
2/28/2011	74.09	6417.91	1.00
4/12/2012	74.72	6417.28	-0.63
2/13/2013	74.23	6417.77	0.49
4/9/2014	75.10	6416.90	-0.87
4/1/2015	75.68	6416.32	-0.58
2/25/2016	75.30	6416.70	0.38
3/8/2017	74.94	6417.06	0.36

All Historic Measurements



UPPER BLACK SQUIRREL

Well Name: **BS-30**

Owner: GEORGE & TED SCHUBERT

Permit #: 27553 - F - **Location #:** SC01406221CC

USGS Site ID:

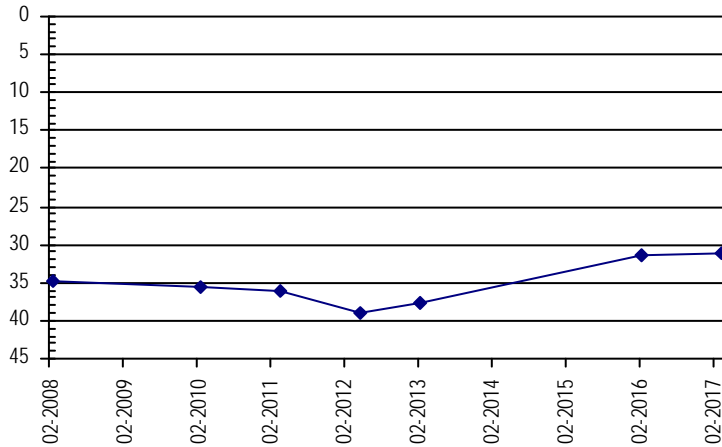
Division: 2 **Water District:** 10 **County:** EL PASO
Location: Q160 Q40 Q10 Section Twnshp Range PM Distance from section lines:
 SW SW 21 14 S 62 W S **From N/S line:** **From E/W line:**
UTM Coordinates (NAD83): **Northing (UTM y):** 4296203.0 **Easting (UTM x):** 556479.0 *GPS*
Latitude/Longitude (decimal degrees): 38.812790 -104.349469

Surface Elevation (ft): 5898 **Top Perforated Interval (ft):** 15 **Base of grout (ft):** **Water Level Change**
Well depth (ft): 54 **Bottom Perforated Interval (ft):** 54 **1 year:** 0.33
Aquifer(s): QUATERNARY ALLUVIUM **5 year:** 7.92
10 year:

Measurements from last 10 years

Date	Depth to WL (ft)	Elev of WL (ft)	Change (ft)
2/21/2008	34.68	5863.32	
1/1/2009			
2/23/2010	35.56	5862.44	
3/2/2011	36.14	5861.86	-0.58
4/13/2012	39.10	5858.90	-2.96
2/19/2013	37.76	5860.24	1.34
4/10/2014			
4/1/2015			
2/26/2016	31.51	5866.49	
3/8/2017	31.18	5866.82	0.33

All Historic Measurements



Well Name: **BS-31**

Owner: GEORGE & TED SCHUBERT

Permit #: 6970 - FP - **Location #:** SC01406229AB

USGS Site ID:

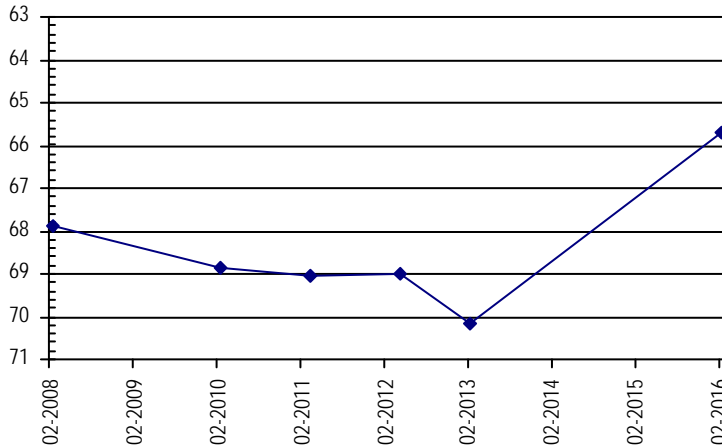
Division: 2 **Water District:** 10 **County:** EL PASO
Location: Q160 Q40 Q10 Section Twnshp Range PM Distance from section lines:
 NE NW 29 14 S 62 W S **From N/S line:** **From E/W line:**
UTM Coordinates (NAD83): **Northing (UTM y):** 4295579.0 **Easting (UTM x):** 555675.0 *GPS*
Latitude/Longitude (decimal degrees): 38.807218 -104.358780

Surface Elevation (ft): 5878 **Top Perforated Interval (ft):** 56 **Base of grout (ft):** **Water Level Change**
Well depth (ft): 96 **Bottom Perforated Interval (ft):** 96 **1 year:**
Aquifer(s): QUATERNARY ALLUVIUM **5 year:**
10 year:

Measurements from last 10 years

Date	Depth to WL (ft)	Elev of WL (ft)	Change (ft)
2/21/2008	67.87	5810.13	
1/1/2009			
2/23/2010	68.87	5809.13	
3/2/2011	69.04	5808.96	-0.17
4/13/2012	69.02	5808.98	0.02
2/19/2013	70.15	5807.85	-1.13
4/10/2014			
4/1/2015			
2/25/2016	65.71	5812.29	
3/8/2017			

All Historic Measurements



UPPER BLACK SQUIRREL

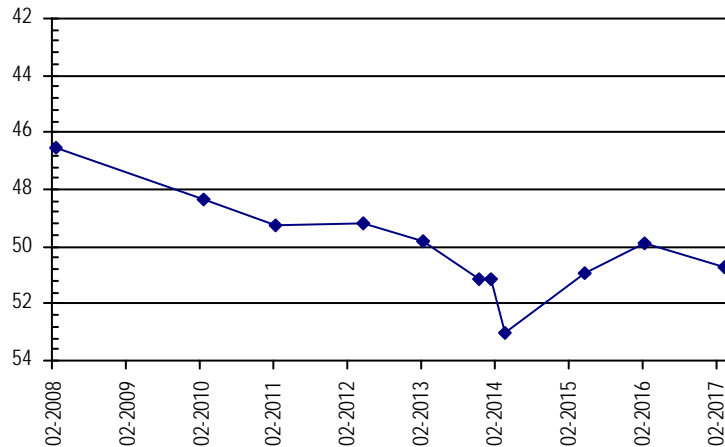
Well Name: **BS-32** **Owner:** SPRINGS EAST AIRPORT, INC
Permit #: 6055 - FP - **Location #:** SC01306335DC **USGS Site ID:**
Division: 2 **Water District:** 10 **County:** EL PASO
Location: Q160 Q40 Q10 Section Twnshp Range PM Distance from section lines:
 SE SW 35 13 S 63 W S **From N/S line:** **From E/W line:**
UTM Coordinates (NAD83): **Northing (UTM y):** 4302231.0 **Easting (UTM x):** 550905.0 *GPS*
Latitude/Longitude (decimal degrees): 38.867449 -104.413222

Surface Elevation (ft): 6142 **Top Perforated Interval (ft):** 99 **Base of grout (ft):** **Water Level Change**
Well depth (ft): 159 **Bottom Perforated Interval (ft):** 159 **1 year:** -0.87
Aquifer(s): QUATERNARY ALLUVIUM **5 year:** -1.58
10 year:

Measurements from last 10 years

Date	Depth to WL (ft)	Elev of WL (ft)	Change (ft)
2/21/2008	46.52	6095.48	
1/1/2010			
2/17/2010	48.38	6093.62	
2/28/2011	49.28	6092.72	-0.90
4/12/2012	49.17	6092.83	0.11
2/13/2013	49.80	6092.20	-0.63
11/7/2013	51.13	6090.87	-1.33
1/7/2014	51.13	6090.87	0.00
3/5/2014	53.00	6089.00	-1.87
4/1/2015	50.93	6091.07	2.07
2/25/2016	49.88	6092.12	1.05
3/8/2017	50.75	6091.25	-0.87

All Historic Measurements



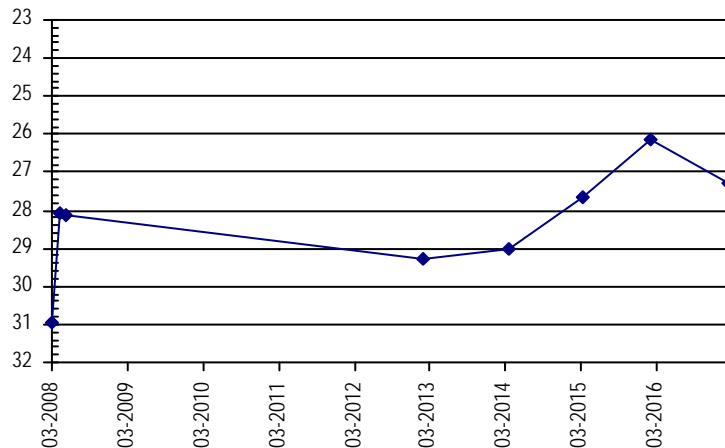
Well Name: **BS-33** **Owner:** BOHART RANCH
Permit #: 58166 - - **Location #:** SC01506205BDD **USGS Site ID:**
Division: 2 **Water District:** 10 **County:** EL PASO
Location: Q160 Q40 Q10 Section Twnshp Range PM Distance from section lines:
 NW SE SE 5 15 S 62 W S **From N/S line:** **From E/W line:**
UTM Coordinates (NAD83): **Northing (UTM y):** 4291926.6 **Easting (UTM x):** 555605.2 *GPS*
Latitude/Longitude (decimal degrees): 38.774311 -104.359878

Surface Elevation (ft): 5790 **Top Perforated Interval (ft):** **Base of grout (ft):** **Water Level Change**
Well depth (ft): 92 **Bottom Perforated Interval (ft):** **1 year:** -1.12
Aquifer(s): QUATERNARY ALLUVIUM **5 year:**
 LARAMIE FOX HILLS **10 year:**

Measurements from last 10 years

Date	Depth to WL (ft)	Elev of WL (ft)	Change (ft)
3/27/2008	30.95	5759.05	
5/8/2008	28.05	5761.95	2.90
5/30/2008	28.15	5761.85	-0.10
2/19/2013	29.27	5760.73	-1.12
4/10/2014	29.01	5760.99	0.26
4/1/2015	27.66	5762.34	1.35
2/25/2016	26.16	5763.84	1.50
3/8/2017	27.28	5762.72	-1.12

All Historic Measurements



UPPER BLACK SQUIRREL

Well Name: **BS-SALAY-03**

Owner: USGS

Permit #: 98502 - -

Location #: SC01406336DDDD

USGS Site ID:

Division: 2 **Water District:** 10 **County:** EL PASO

Location: Q160 Q40 Q10 Section Twnshp Range PM Distance from section lines:
SE SE SE 36 14 S 63 W S *From N/S line:* *From E/W line:*

UTM Coordinates (NAD83): *Northing (UTM y):* 4292655.0 *Easting (UTM x):* 553165.0 *GPS*

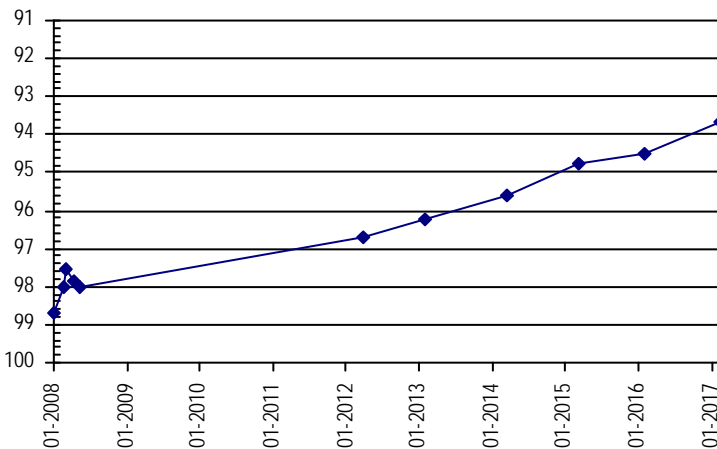
Latitude/Longitude (decimal degrees): 38.781025 -104.387912

Surface Elevation (ft): 5858 **Top Perforated Interval (ft):** **Base of grout (ft):** **Water Level Change**
Well depth (ft): 150 **Bottom Perforated Interval (ft):** **1 year:** 0.82
Aquifer(s): QUATERNARY ALLUVIUM **5 year:** 3.05
10 year:

Measurements from last 10 years

Date	Depth to WL (ft)	Elev of WL (ft)	Change (ft)
1/24/2008	98.70	5759.30	
3/14/2008	98.00	5760.00	0.70
3/28/2008	97.56	5760.44	0.44
5/1/2008	97.83	5760.17	-0.27
5/30/2008	98.03	5759.97	-0.20
4/13/2012	96.71	5761.29	1.32
2/19/2013	96.23	5761.77	0.48
4/10/2014	95.59	5762.41	0.64
4/1/2015	94.76	5763.24	0.83
2/25/2016	94.48	5763.52	0.28
3/8/2017	93.66	5764.34	0.82

All Historic Measurements



Well Name: **BS-SLB1**

Owner: COLORADO STATE LAND BOARD

Permit #: 277308 - -

Location #: SC01306316DDDD

USGS Site ID:

Division: 2 **Water District:** 10 **County:** EL PASO

Location: Q160 Q40 Q10 Section Twnshp Range PM Distance from section lines:
SE SE SE 16 13 S 63 W S *From N/S line:* *From E/W line:*

UTM Coordinates (NAD83): *Northing (UTM y):* 4307040.0 *Easting (UTM x):* 548288.0 *GPS*

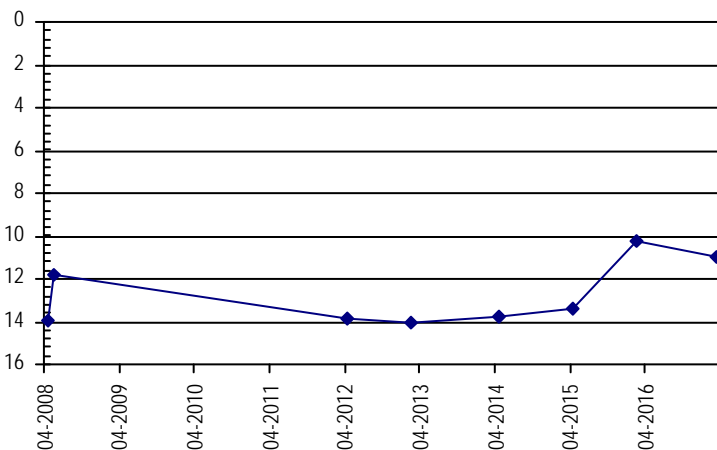
Latitude/Longitude (decimal degrees): 38.910931 -104.443048

Surface Elevation (ft): 6343 **Top Perforated Interval (ft):** 20 **Base of grout (ft):** **Water Level Change**
Well depth (ft): 43 **Bottom Perforated Interval (ft):** 40 **1 year:** -0.68
Aquifer(s): QUATERNARY ALLUVIUM **5 year:** 2.90
10 year:

Measurements from last 10 years

Date	Depth to WL (ft)	Elev of WL (ft)	Change (ft)
4/30/2008	13.94	6329.06	
5/30/2008	11.83	6331.17	2.11
4/12/2012	13.84	6329.16	-2.01
2/13/2013	14.00	6329.00	-0.16
4/9/2014	13.78	6329.22	0.22
4/1/2015	13.43	6329.57	0.35
2/25/2016	10.26	6332.74	3.17
3/8/2017	10.94	6332.06	-0.68

All Historic Measurements



UPPER BLACK SQUIRREL

Well Name: **BS-SLB2A** **Owner:** COLORADO STATE BOARD OF LAND
Permit #: 277307 - **USGS Site ID:**
Location #: SC01306336CA

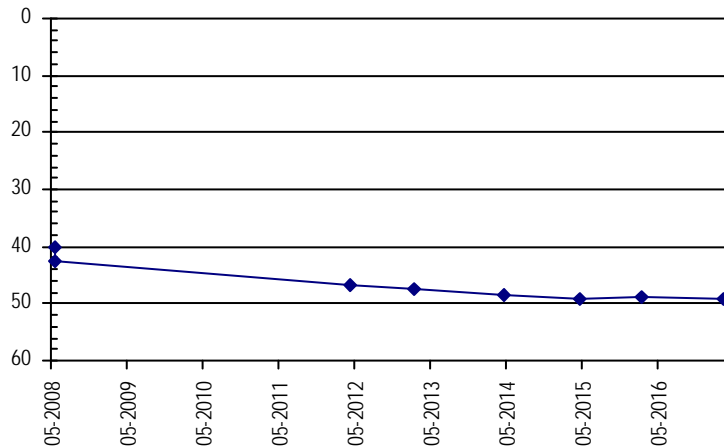
Division: 2 **Water District:** 10 **County:** EL PASO
Location: Q160 Q40 Q10 Section Twnshp Range PM Distance from section lines:
 NE SE 36 13 S 63 W S **From N/S line:** **From E/W line:**
UTM Coordinates (NAD83): **Northing (UTM y):** 4303066.0 **Easting (UTM x):** 553120.0 *GPS*
Latitude/Longitude (decimal degrees): 38.874842 -104.387627

Surface Elevation (ft): 6130 **Top Perforated Interval (ft):** 39 **Base of grout (ft):** **Water Level Change**
Well depth (ft): 69 **Bottom Perforated Interval (ft):** 59 **1 year:** -0.25
Aquifer(s): QUATERNARY ALLUVIUM **5 year:** -2.37
10 year:

Measurements from last 10 years

Date	Depth to WL (ft)	Elev of WL (ft)	Change (ft)
5/1/2008	40.20	6089.80	
5/30/2008	42.64	6087.36	-2.44
4/12/2012	46.70	6083.30	-4.06
2/13/2013	47.50	6082.50	-0.80
4/9/2014	48.36	6081.64	-0.86
4/1/2015	49.03	6080.97	-0.67
2/25/2016	48.82	6081.18	0.21
3/8/2017	49.07	6080.93	-0.25

All Historic Measurements



Well Name: **BS-SLB3** **Owner:** COLORADO STATE LAND BOARD
Permit #: 277314 - **USGS Site ID:**
Location #: SC01406204BAA

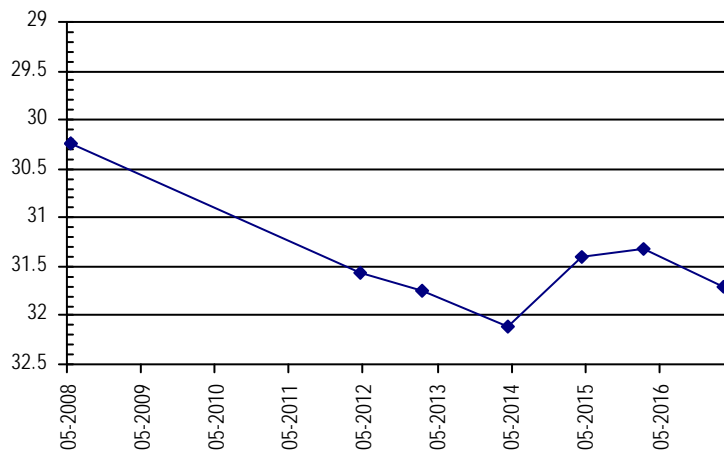
Division: 2 **Water District:** 10 **County:** EL PASO
Location: Q160 Q40 Q10 Section Twnshp Range PM Distance from section lines:
 NW NE NE 4 14 S 62 W S **From N/S line:** **From E/W line:**
UTM Coordinates (NAD83): **Northing (UTM y):** 4302249.0 **Easting (UTM x):** 557023.0 *GPS*
Latitude/Longitude (decimal degrees): 38.867236 -104.342703

Surface Elevation (ft): 6052 **Top Perforated Interval (ft):** 22 **Base of grout (ft):** **Water Level Change**
Well depth (ft): 42 **Bottom Perforated Interval (ft):** 42 **1 year:** -0.40
Aquifer(s): QUATERNARY ALLUVIUM **5 year:** -0.15
10 year:

Measurements from last 10 years

Date	Depth to WL (ft)	Elev of WL (ft)	Change (ft)
5/2/2008	30.25	6021.75	
5/30/2008	30.25	6021.75	0.00
4/12/2012	31.56	6020.44	-1.31
2/13/2013	31.74	6020.26	-0.18
4/9/2014	32.11	6019.89	-0.37
4/1/2015	31.40	6020.60	0.71
2/26/2016	31.31	6020.69	0.09
3/8/2017	31.71	6020.29	-0.40

All Historic Measurements



UPPER BLACK SQUIRREL

Well Name: **BS-SLB4** **Owner:** COLORADO STATE LAND BOARD
Permit #: 277315 - **USGS Site ID:**
Location #: SC01406323AAA

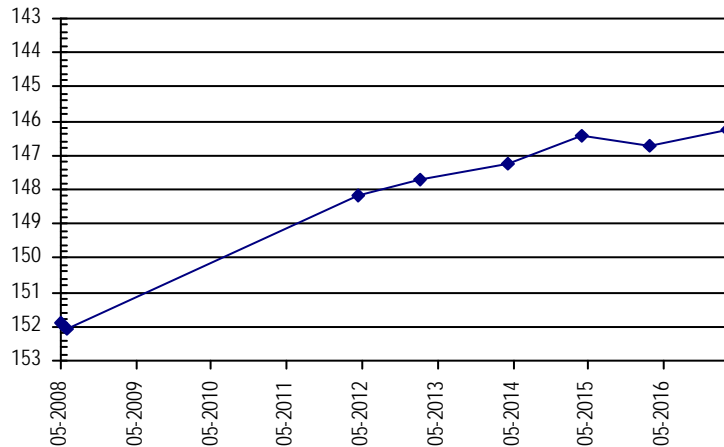
Division: 2 **Water District:** 10 **County:** EL PASO
Location: Q160 Q40 Q10 Section Twnshp Range PM Distance from section lines:
 NE NE NE 23 14 S 63 W S **From N/S line:** **From E/W line:**
UTM Coordinates (NAD83): **Northing (UTM y):** 4297349.0 **Easting (UTM x):** 551578.0 *GPS*
Latitude/Longitude (decimal degrees): 38.823418 -104.405831

Surface Elevation (ft): 6000 **Top Perforated Interval (ft):** 112 **Base of grout (ft):** **Water Level Change**
Well depth (ft): 180 **Bottom Perforated Interval (ft):** 172 **1 year:** 0.44
Aquifer(s): QUATERNARY ALLUVIUM **5 year:** 1.91
10 year:

Measurements from last 10 years

Date	Depth to WL (ft)	Elev of WL (ft)	Change (ft)
5/5/2008	151.92	5848.08	
5/30/2008	152.07	5847.93	-0.15
4/13/2012	148.17	5851.83	3.90
2/13/2013	147.70	5852.30	0.47
4/9/2014	147.26	5852.74	0.44
4/1/2015	146.42	5853.58	0.84
2/25/2016	146.70	5853.30	-0.28
3/8/2017	146.26	5853.74	0.44

All Historic Measurements



Well Name: **BS-SLB5** **Owner:** COLORADO STATE LAND BOARD
Permit #: 277316 - **USGS Site ID:**
Location #: SC01406325DA

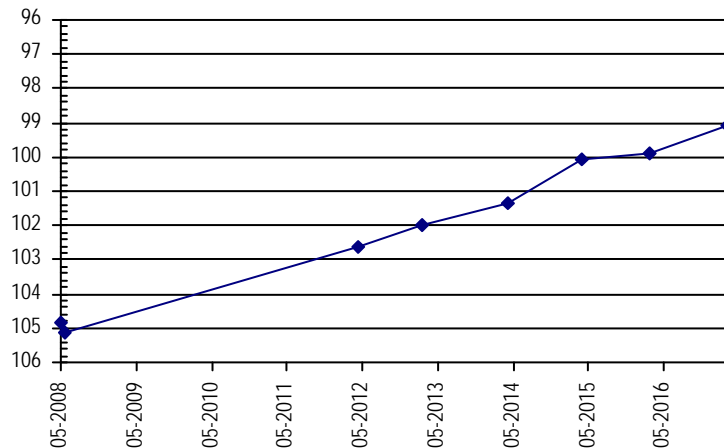
Division: 2 **Water District:** 10 **County:** EL PASO
Location: Q160 Q40 Q10 Section Twnshp Range PM Distance from section lines:
 SE NE 25 14 S 63 W S **From N/S line:** **From E/W line:**
UTM Coordinates (NAD83): **Northing (UTM y):** 4294671.0 **Easting (UTM x):** 553232.0 *GPS*
Latitude/Longitude (decimal degrees): 38.799187 -104.386985

Surface Elevation (ft): 5900 **Top Perforated Interval (ft):** 115 **Base of grout (ft):** **Water Level Change**
Well depth (ft): 165 **Bottom Perforated Interval (ft):** 165 **1 year:** 0.77
Aquifer(s): QUATERNARY ALLUVIUM **5 year:** 3.51
10 year:

Measurements from last 10 years

Date	Depth to WL (ft)	Elev of WL (ft)	Change (ft)
5/7/2008	104.85	5795.15	
5/30/2008	105.14	5794.86	-0.29
4/12/2012	102.62	5797.38	2.52
2/19/2013	101.97	5798.03	0.65
4/10/2014	101.34	5798.66	0.63
4/1/2015	100.07	5799.93	1.27
2/25/2016	99.88	5800.12	0.19
3/8/2017	99.11	5800.89	0.77

All Historic Measurements



UPPER BLACK SQUIRREL

Well Name: **BS-SLB6** **Owner:** COLORADO STATE LAND BOARD
Permit #: 277318 - **USGS Site ID:**
Location #: SC01506207AD

Division: 2 **Water District:** 10 **County:** EL PASO
Location: Q160 Q40 Q10 Section Twtnshp Range PM Distance from section lines:
NE SE 7 15 S 62 W S **From N/S line:** **From E/W line:**
UTM Coordinates (NAD83): **Northing (UTM y):** 4290564.0 **Easting (UTM x):** 554530.0 *GPS*
Latitude/Longitude (decimal degrees): 38.762099 -104.372362

Surface Elevation (ft): 5755 **Top Perforated Interval (ft):** 30 **Base of grout (ft):** **Water Level Change**
Well depth (ft): 87 **Bottom Perforated Interval (ft):** 67 **1 year:** 0.48
Aquifer(s): QUATERNARY ALLUVIUM **5 year:**
10 year:

Measurements from last 10 years

Date	Depth to WL (ft)	Elev of WL (ft)	Change (ft)
5/8/2008	42.38	5712.62	
5/30/2008	42.35	5712.65	0.03
2/19/2013	42.08	5712.92	0.27
4/10/2014	41.71	5713.29	0.37
4/1/2015	40.98	5714.02	0.73
2/25/2016	39.74	5715.26	1.24
3/8/2017	39.26	5715.74	0.48

All Historic Measurements

